



# Full wwPDB X-ray Structure Validation Report ⓘ

Feb 1, 2016 – 02:36 PM GMT

PDB ID : 421P  
Title : THREE-DIMENSIONAL STRUCTURES OF H-RAS P21 MUTANTS:  
MOLECULAR BASIS FOR THEIR INABILITY TO FUNCTION AS SIG-  
NAL SWITCH MOLECULES  
Authors : Krengel, U.; John, J.; Scherer, A.; Kabsch, W.; Wittinghofer, A.; Pai, E.F.  
Deposited on : 1991-06-06  
Resolution : 2.20 Å(reported)

This is a Full wwPDB X-ray Structure Validation Report for a publicly released PDB entry.  
We welcome your comments at [validation@mail.wwpdb.org](mailto:validation@mail.wwpdb.org)  
A user guide is available at  
<http://wwpdb.org/validation/2016/XrayValidationReportHelp>  
with specific help available everywhere you see the ⓘ symbol.

---

The following versions of software and data (see [references ⓘ](#)) were used in the production of this report:

MolProbity : 4.02b-467  
Mogul : 1.7 (RC4), CSD as536be (2015)  
Xtriage (Phenix) : **NOT EXECUTED**  
EDS : **NOT EXECUTED**  
Percentile statistics : 20151230.v01 (using entries in the PDB archive December 30th 2015)  
Ideal geometry (proteins) : Engh & Huber (2001)  
Ideal geometry (DNA, RNA) : Parkinson et al. (1996)  
Validation Pipeline (wwPDB-VP) : trunk26865

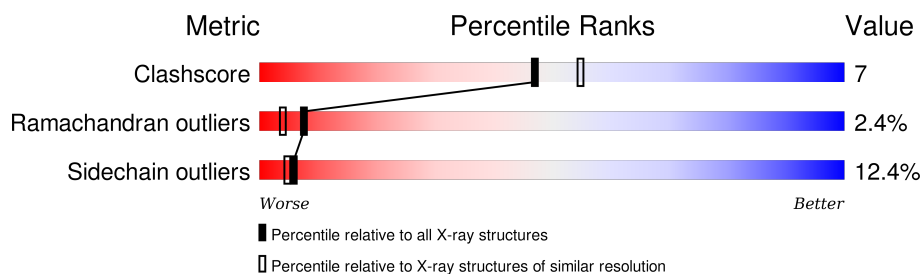
# 1 Overall quality at a glance

The following experimental techniques were used to determine the structure:

*X-RAY DIFFRACTION*

The reported resolution of this entry is 2.20 Å.

Percentile scores (ranging between 0-100) for global validation metrics of the entry are shown in the following graphic. The table shows the number of entries on which the scores are based.



Metric	Whole archive (#Entries)	Similar resolution (#Entries, resolution range(Å))
Clashscore	102246	4477 (2.20-2.20)
Ramachandran outliers	100387	4404 (2.20-2.20)
Sidechain outliers	100360	4405 (2.20-2.20)

The table below summarises the geometric issues observed across the polymeric chains and their fit to the electron density. The red, orange, yellow and green segments on the lower bar indicate the fraction of residues that contain outliers for  $\geq 3$ , 2, 1 and 0 types of geometric quality criteria. A grey segment represents the fraction of residues that are not modelled. The numeric value for each fraction is indicated below the corresponding segment, with a dot representing fractions  $\leq 5\%$ . The upper red bar (where present) indicates the fraction of residues that have poor fit to the electron density. The numeric value is given above the bar.

Note EDS was not executed.

Mol	Chain	Length	Quality of chain
1	A	166	 67% 25% 7% •

## 2 Entry composition [i](#)

There are 4 unique types of molecules in this entry. The entry contains 1564 atoms, of which 0 are hydrogens and 0 are deuteriums.

In the tables below, the ZeroOcc column contains the number of atoms modelled with zero occupancy, the AltConf column contains the number of residues with at least one atom in alternate conformation and the Trace column contains the number of residues modelled with at most 2 atoms.

- Molecule 1 is a protein called H-RAS P21 PROTEIN.

Mol	Chain	Residues	Atoms					ZeroOcc	AltConf	Trace
1	A	166	Total	C	N	O	S	0	0	0
			1329	827	231	264	7			

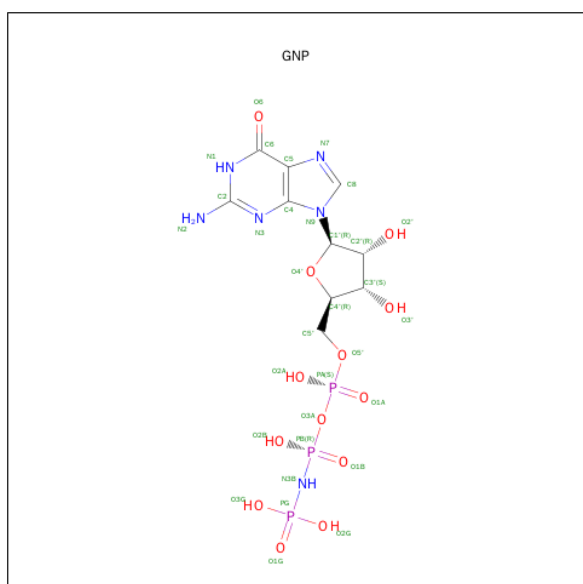
There is a discrepancy between the modelled and reference sequences:

Chain	Residue	Modelled	Actual	Comment	Reference
A	12	ARG	GLY	ENGINEERED MUTATION	UNP P01112

- Molecule 2 is MAGNESIUM ION (three-letter code: MG) (formula: Mg).

Mol	Chain	Residues	Atoms		ZeroOcc	AltConf
2	A	1	Total	Mg	0	0
			1	1		

- Molecule 3 is PHOSPHOAMINOPHOSPHONIC ACID-GUANYLATE ESTER (three-letter code: GNP) (formula: C<sub>10</sub>H<sub>17</sub>N<sub>6</sub>O<sub>13</sub>P<sub>3</sub>).



Mol	Chain	Residues	Atoms					ZeroOcc	AltConf
3	A	1	Total	C	N	O	P	0	0
			32	10	6	13	3		

- Molecule 4 is water.

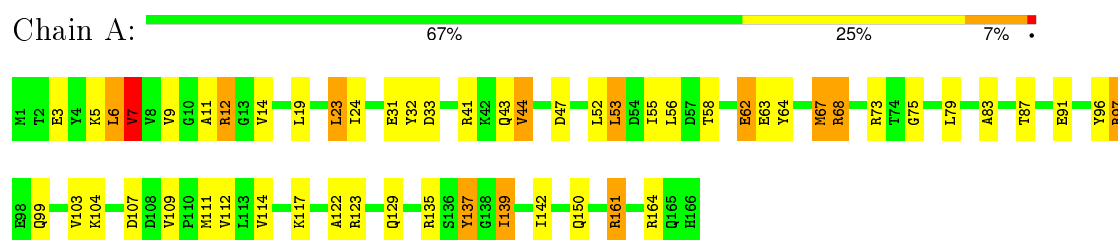
Mol	Chain	Residues	Atoms		ZeroOcc	AltConf
4	A	202	Total	O	0	0
			202	202		

### 3 Residue-property plots [i](#)

These plots are drawn for all protein, RNA and DNA chains in the entry. The first graphic for a chain summarises the proportions of errors displayed in the second graphic. The second graphic shows the sequence view annotated by issues in geometry and electron density. Residues are color-coded according to the number of geometric quality criteria for which they contain at least one outlier: green = 0, yellow = 1, orange = 2 and red = 3 or more. A red dot above a residue indicates a poor fit to the electron density ( $RSRZ > 2$ ). Stretches of 2 or more consecutive residues without any outlier are shown as a green connector. Residues present in the sample, but not in the model, are shown in grey.

Note EDS was not executed.

#### • Molecule 1: H-RAS P21 PROTEIN



## 4 Data and refinement statistics

Xtriage (Phenix) and EDS were not executed - this section will therefore be incomplete.

Property	Value	Source
Space group	P 32 2 1	Depositor
Cell constants a, b, c, $\alpha$ , $\beta$ , $\gamma$	40.40Å 40.40Å 162.20Å 90.00° 90.00° 120.00°	Depositor
Resolution (Å)	(Not available) – 2.20	Depositor
% Data completeness (in resolution range)	(Not available) ((Not available)-2.20)	Depositor
$R_{merge}$	(Not available)	Depositor
$R_{sym}$	(Not available)	Depositor
Refinement program	X-PLOR	Depositor
R, $R_{free}$	0.192 , (Not available)	Depositor
Estimated twinning fraction	No twinning to report.	Xtriage
Total number of atoms	1564	wwPDB-VP
Average B, all atoms (Å <sup>2</sup> )	17.0	wwPDB-VP

## 5 Model quality [i](#)

### 5.1 Standard geometry [i](#)

Bond lengths and bond angles in the following residue types are not validated in this section: GNP, MG

The Z score for a bond length (or angle) is the number of standard deviations the observed value is removed from the expected value. A bond length (or angle) with  $|Z| > 5$  is considered an outlier worth inspection. RMSZ is the root-mean-square of all Z scores of the bond lengths (or angles).

Mol	Chain	Bond lengths		Bond angles	
		RMSZ	$\# Z  > 5$	RMSZ	$\# Z  > 5$
1	A	0.87	1/1348 (0.1%)	1.67	19/1817 (1.0%)

All (1) bond length outliers are listed below:

Mol	Chain	Res	Type	Atoms	Z	Observed(Å)	Ideal(Å)
1	A	7	VAL	CA-CB	5.51	1.66	1.54

All (19) bond angle outliers are listed below:

Mol	Chain	Res	Type	Atoms	Z	Observed(°)	Ideal(°)
1	A	137	TYR	CA-C-N	9.10	134.40	116.20
1	A	164	ARG	NE-CZ-NH2	-8.95	115.82	120.30
1	A	137	TYR	O-C-N	-8.32	109.05	123.20
1	A	123	ARG	NE-CZ-NH1	8.24	124.42	120.30
1	A	161	ARG	NE-CZ-NH2	-7.60	116.50	120.30
1	A	68	ARG	NE-CZ-NH1	6.90	123.75	120.30
1	A	12	ARG	NE-CZ-NH1	6.76	123.68	120.30
1	A	44	VAL	N-CA-CB	-6.71	96.73	111.50
1	A	6	LEU	CA-CB-CG	6.62	130.53	115.30
1	A	129	GLN	CA-CB-CG	6.36	127.40	113.40
1	A	33	ASP	CB-CG-OD1	6.16	123.85	118.30
1	A	68	ARG	NE-CZ-NH2	-6.09	117.25	120.30
1	A	96	TYR	CB-CG-CD2	-6.01	117.39	121.00
1	A	164	ARG	NE-CZ-NH1	5.85	123.23	120.30
1	A	23	LEU	CA-CB-CG	5.37	127.64	115.30
1	A	97	ARG	N-CA-CB	-5.34	100.99	110.60
1	A	107	ASP	CB-CG-OD1	5.32	123.09	118.30
1	A	44	VAL	CB-CA-C	5.21	121.30	111.40
1	A	73	ARG	NE-CZ-NH2	-5.06	117.77	120.30

There are no chirality outliers.

There are no planarity outliers.

## 5.2 Too-close contacts

In the following table, the Non-H and H(model) columns list the number of non-hydrogen atoms and hydrogen atoms in the chain respectively. The H(added) column lists the number of hydrogen atoms added and optimized by MolProbity. The Clashes column lists the number of clashes within the asymmetric unit, whereas Symm-Clashes lists symmetry related clashes.

Mol	Chain	Non-H	H(model)	H(added)	Clashes	Symm-Clashes
1	A	1329	0	1302	20	0
2	A	1	0	0	0	0
3	A	32	0	13	1	0
4	A	202	0	0	2	0
All	All	1564	0	1315	20	0

The all-atom clashscore is defined as the number of clashes found per 1000 atoms (including hydrogen atoms). The all-atom clashscore for this structure is 7.

All (20) close contacts within the same asymmetric unit are listed below, sorted by their clash magnitude.

Atom-1	Atom-2	Interatomic distance (Å)	Clash overlap (Å)
1:A:32:TYR:HE1	4:A:313:HOH:O	1.76	0.68
1:A:83:ALA:HB1	1:A:117:LYS:HD2	1.87	0.56
1:A:41:ARG:HA	1:A:53:LEU:O	2.08	0.54
1:A:32:TYR:CE1	4:A:313:HOH:O	2.54	0.53
1:A:62:GLU:HG3	1:A:64:TYR:H	1.73	0.53
1:A:79:LEU:HD22	1:A:114:VAL:HG21	1.92	0.51
1:A:111:MET:HB3	1:A:139:ILE:HG12	1.93	0.50
1:A:11:ALA:O	1:A:14:VAL:HG22	2.12	0.49
1:A:3:GLU:HG2	1:A:52:LEU:HB3	1.96	0.48
1:A:56:LEU:HD12	1:A:58:THR:HG22	1.97	0.45
1:A:97:ARG:HH12	1:A:139:ILE:HD13	1.81	0.45
1:A:7:VAL:CG1	1:A:75:GLY:HA3	2.49	0.43
1:A:24:ILE:HD11	1:A:55:ILE:HD12	2.00	0.43
1:A:12:ARG:HG2	3:A:167:GNP:O3G	2.19	0.42
1:A:137:TYR:HB2	1:A:139:ILE:HB	2.02	0.41
1:A:87:THR:O	1:A:91:GLU:HG3	2.20	0.41
1:A:99:GLN:O	1:A:103:VAL:HG22	2.20	0.41
1:A:56:LEU:CD1	1:A:58:THR:HG22	2.50	0.41
1:A:64:TYR:O	1:A:68:ARG:NH1	2.54	0.41

*Continued on next page...*



*Continued from previous page...*

Atom-1	Atom-2	Interatomic distance (Å)	Clash overlap (Å)
1:A:47:ASP:OD2	1:A:161:ARG:HD3	2.22	0.40

There are no symmetry-related clashes.

## 5.3 Torsion angles [i](#)

### 5.3.1 Protein backbone [i](#)

In the following table, the Percentiles column shows the percent Ramachandran outliers of the chain as a percentile score with respect to all X-ray entries followed by that with respect to entries of similar resolution.

The Analysed column shows the number of residues for which the backbone conformation was analysed, and the total number of residues.

Mol	Chain	Analysed	Favoured	Allowed	Outliers	Percentiles
1	A	164/166 (99%)	153 (93%)	7 (4%)	4 (2%)	<b>7</b> <b>4</b>

All (4) Ramachandran outliers are listed below:

Mol	Chain	Res	Type
1	A	62	GLU
1	A	67	MET
1	A	122	ALA
1	A	63	GLU

### 5.3.2 Protein sidechains [i](#)

In the following table, the Percentiles column shows the percent sidechain outliers of the chain as a percentile score with respect to all X-ray entries followed by that with respect to entries of similar resolution.

The Analysed column shows the number of residues for which the sidechain conformation was analysed, and the total number of residues.

Mol	Chain	Analysed	Rotameric	Outliers	Percentiles
1	A	145/145 (100%)	127 (88%)	18 (12%)	<b>6</b> <b>5</b>

All (18) residues with a non-rotameric sidechain are listed below:

Mol	Chain	Res	Type
1	A	5	LYS
1	A	6	LEU
1	A	7	VAL
1	A	9	VAL
1	A	19	LEU
1	A	23	LEU
1	A	31	GLU
1	A	43	GLN
1	A	44	VAL
1	A	53	LEU
1	A	67	MET
1	A	104	LYS
1	A	109	VAL
1	A	112	VAL
1	A	135	ARG
1	A	139	ILE
1	A	142	ILE
1	A	150	GLN

Some sidechains can be flipped to improve hydrogen bonding and reduce clashes. All (3) such sidechains are listed below:

Mol	Chain	Res	Type
1	A	26	ASN
1	A	94	HIS
1	A	150	GLN

### 5.3.3 RNA ⓘ

There are no RNA molecules in this entry.

## 5.4 Non-standard residues in protein, DNA, RNA chains ⓘ

There are no non-standard protein/DNA/RNA residues in this entry.

## 5.5 Carbohydrates ⓘ

There are no carbohydrates in this entry.

## 5.6 Ligand geometry

Of 2 ligands modelled in this entry, 1 is monoatomic - leaving 1 for Mogul analysis.

In the following table, the Counts columns list the number of bonds (or angles) for which Mogul statistics could be retrieved, the number of bonds (or angles) that are observed in the model and the number of bonds (or angles) that are defined in the chemical component dictionary. The Link column lists molecule types, if any, to which the group is linked. The Z score for a bond length (or angle) is the number of standard deviations the observed value is removed from the expected value. A bond length (or angle) with  $|Z| > 2$  is considered an outlier worth inspection. RMSZ is the root-mean-square of all Z scores of the bond lengths (or angles).

Mol	Type	Chain	Res	Link	Bond lengths			Bond angles		
					Counts	RMSZ	# Z  > 2	Counts	RMSZ	# Z  > 2
3	GNP	A	167	2	28,34,34	1.78	6 (21%)	33,54,54	2.60	10 (30%)

In the following table, the Chirals column lists the number of chiral outliers, the number of chiral centers analysed, the number of these observed in the model and the number defined in the chemical component dictionary. Similar counts are reported in the Torsion and Rings columns. '-' means no outliers of that kind were identified.

Mol	Type	Chain	Res	Link	Chirals	Torsions	Rings
3	GNP	A	167	2	-	1/12/38/38	0/3/3/3

All (6) bond length outliers are listed below:

Mol	Chain	Res	Type	Atoms	Z	Observed(Å)	Ideal(Å)
3	A	167	GNP	PG-O2G	-3.89	1.45	1.56
3	A	167	GNP	PB-O2B	-3.41	1.47	1.56
3	A	167	GNP	C8-N7	-2.89	1.29	1.34
3	A	167	GNP	C2-N1	2.38	1.39	1.35
3	A	167	GNP	PB-O3A	3.47	1.63	1.59
3	A	167	GNP	C6-N1	3.99	1.40	1.33

All (10) bond angle outliers are listed below:

Mol	Chain	Res	Type	Atoms	Z	Observed(°)	Ideal(°)
3	A	167	GNP	C5-C6-N1	-9.40	110.73	123.59
3	A	167	GNP	O3G-PG-O1G	-4.29	102.10	113.49
3	A	167	GNP	O3G-PG-O2G	-3.38	97.55	107.58
3	A	167	GNP	C2'-C1'-N9	-3.05	109.64	114.29
3	A	167	GNP	N3-C2-N1	-2.84	123.12	127.44
3	A	167	GNP	O5'-PA-O1A	-2.00	101.85	109.62
3	A	167	GNP	O4'-C1'-N9	2.30	112.91	108.10
3	A	167	GNP	O2'-C2'-C3'	2.45	119.79	111.83

*Continued on next page...*

*Continued from previous page...*

Mol	Chain	Res	Type	Atoms	Z	Observed( $^{\circ}$ )	Ideal( $^{\circ}$ )
3	A	167	GNP	O1G-PG-N3B	2.88	116.31	111.90
3	A	167	GNP	C6-N1-C2	6.52	124.99	115.94

There are no chirality outliers.

All (1) torsion outliers are listed below:

Mol	Chain	Res	Type	Atoms
3	A	167	GNP	O1B-PB-N3B-PG

There are no ring outliers.

1 monomer is involved in 1 short contact:

Mol	Chain	Res	Type	Clashes	Symm-Clashes
3	A	167	GNP	1	0

## 5.7 Other polymers [i](#)

There are no such residues in this entry.

## 5.8 Polymer linkage issues [i](#)

There are no chain breaks in this entry.

## 6 Fit of model and data [i](#)

### 6.1 Protein, DNA and RNA chains [i](#)

EDS was not executed - this section will therefore be empty.

### 6.2 Non-standard residues in protein, DNA, RNA chains [i](#)

EDS was not executed - this section will therefore be empty.

### 6.3 Carbohydrates [i](#)

EDS was not executed - this section will therefore be empty.

### 6.4 Ligands [i](#)

EDS was not executed - this section will therefore be empty.

### 6.5 Other polymers [i](#)

EDS was not executed - this section will therefore be empty.