



Full wwPDB X-ray Structure Validation Report ⓘ

Feb 1, 2016 – 07:14 AM GMT

PDB ID : 3A0K
Title : Crystal structure of an antinflamatory legume lectin from Cymbosema roseum seeds
Authors : Rocha, B.A.M.; Delatorre, P.; Marinho, E.S.; Benevides, R.G.; Moura, T.R.; Souza, L.A.G.; Nascimento, K.S.; Sampaio, A.H.; Cavada, B.S.
Deposited on : 2009-03-20
Resolution : 1.80 Å(reported)

This is a Full wwPDB X-ray Structure Validation Report for a publicly released PDB entry.
We welcome your comments at validation@mail.wwpdb.org
A user guide is available at
<http://wwpdb.org/validation/2016/XrayValidationReportHelp>
with specific help available everywhere you see the ⓘ symbol.

The following versions of software and data (see [references ⓘ](#)) were used in the production of this report:

MolProbity : 4.02b-467
Mogul : 1.7 (RC4), CSD as536be (2015)
Xtriage (Phenix) : 1.9-1692
EDS : rb-20026688
Percentile statistics : 20151230.v01 (using entries in the PDB archive December 30th 2015)
Refmac : 5.8.0135
CCP4 : 6.5.0
Ideal geometry (proteins) : Engh & Huber (2001)
Ideal geometry (DNA, RNA) : Parkinson et al. (1996)
Validation Pipeline (wwPDB-VP) : trunk26865

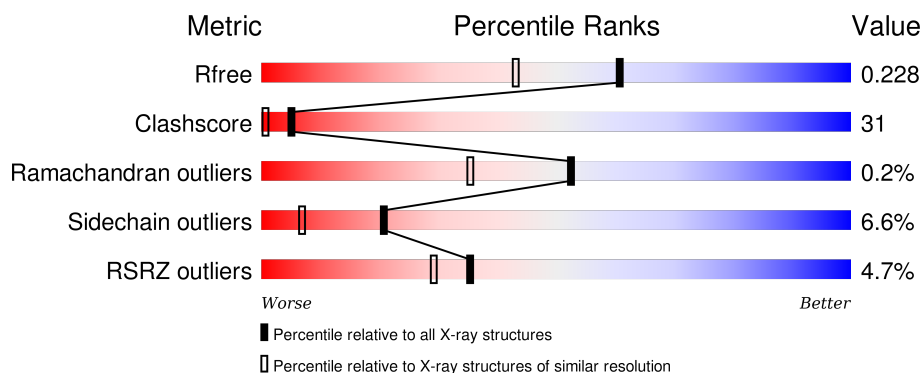
1 Overall quality at a glance

The following experimental techniques were used to determine the structure:

X-RAY DIFFRACTION

The reported resolution of this entry is 1.80 Å.

Percentile scores (ranging between 0-100) for global validation metrics of the entry are shown in the following graphic. The table shows the number of entries on which the scores are based.



Metric	Whole archive (#Entries)	Similar resolution (#Entries, resolution range(Å))
R_{free}	91344	4533 (1.80-1.80)
Clashscore	102246	5383 (1.80-1.80)
Ramachandran outliers	100387	5320 (1.80-1.80)
Sidechain outliers	100360	5319 (1.80-1.80)
RSRZ outliers	91569	4547 (1.80-1.80)

The table below summarises the geometric issues observed across the polymeric chains and their fit to the electron density. The red, orange, yellow and green segments on the lower bar indicate the fraction of residues that contain outliers for ≥ 3 , 2, 1 and 0 types of geometric quality criteria. A grey segment represents the fraction of residues that are not modelled. The numeric value for each fraction is indicated below the corresponding segment, with a dot representing fractions $\leq 5\%$. The upper red bar (where present) indicates the fraction of residues that have poor fit to the electron density. The numeric value is given above the bar.

Mol	Chain	Length	Quality of chain
1	A	237	<div> <div>3%</div> <div>61% 33% . .</div> </div>
1	C	237	<div> <div>6%</div> <div>62% 28% 7% . .</div> </div>
1	E	237	<div> <div>4%</div> <div>60% 33% 6% .</div> </div>
1	G	237	<div> <div>6%</div> <div>63% 27% 6% .</div> </div>

The following table lists non-polymeric compounds, carbohydrate monomers and non-standard

residues in protein, DNA, RNA chains that are outliers for geometric or electron-density-fit criteria:

Mol	Type	Chain	Res	Chirality	Geometry	Clashes	Electron density
4	ABA	E	240	-	-	X	X
4	ABA	G	240	-	-	-	X

2 Entry composition [i](#)

There are 5 unique types of molecules in this entry. The entry contains 7804 atoms, of which 0 are hydrogens and 0 are deuteriums.

In the tables below, the ZeroOcc column contains the number of atoms modelled with zero occupancy, the AltConf column contains the number of residues with at least one atom in alternate conformation and the Trace column contains the number of residues modelled with at most 2 atoms.

- Molecule 1 is a protein called *Cymbosema roseum* mannose-specific lectin.

Mol	Chain	Residues	Atoms					ZeroOcc	AltConf	Trace
1	A	232	Total	C	N	O	S	0	0	0
			1752	1105	288	358	1			
1	C	232	Total	C	N	O	S	0	0	0
			1752	1105	288	358	1			
1	E	237	Total	C	N	O	S	0	0	0
			1787	1125	294	367	1			
1	G	237	Total	C	N	O	S	0	0	0
			1787	1125	294	367	1			

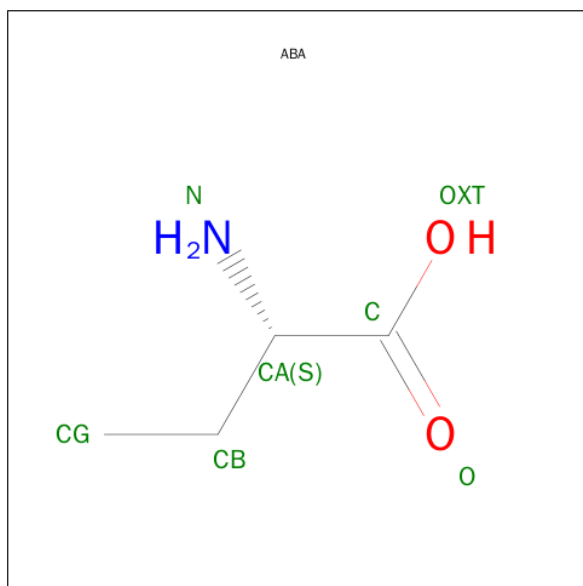
- Molecule 2 is MANGANESE (II) ION (three-letter code: MN) (formula: Mn).

Mol	Chain	Residues	Atoms		ZeroOcc	AltConf
2	G	1	Total	Mn	0	0
			1	1		
2	A	1	Total	Mn	0	0
			1	1		
2	C	1	Total	Mn	0	0
			1	1		
2	E	1	Total	Mn	0	0
			1	1		

- Molecule 3 is CALCIUM ION (three-letter code: CA) (formula: Ca).

Mol	Chain	Residues	Atoms		ZeroOcc	AltConf
3	G	1	Total	Ca	0	0
			1	1		
3	A	1	Total	Ca	0	0
			1	1		
3	C	1	Total	Ca	0	0
			1	1		
3	E	1	Total	Ca	0	0
			1	1		

- Molecule 4 is ALPHA-AMINOBUTYRIC ACID (three-letter code: ABA) (formula: $C_4H_9NO_2$).



Mol	Chain	Residues	Atoms				ZeroOcc	AltConf
4	E	1	Total	C	N	O	0	0
			6	4	1	1		
4	G	1	Total	C	N	O	0	0
			6	4	1	1		

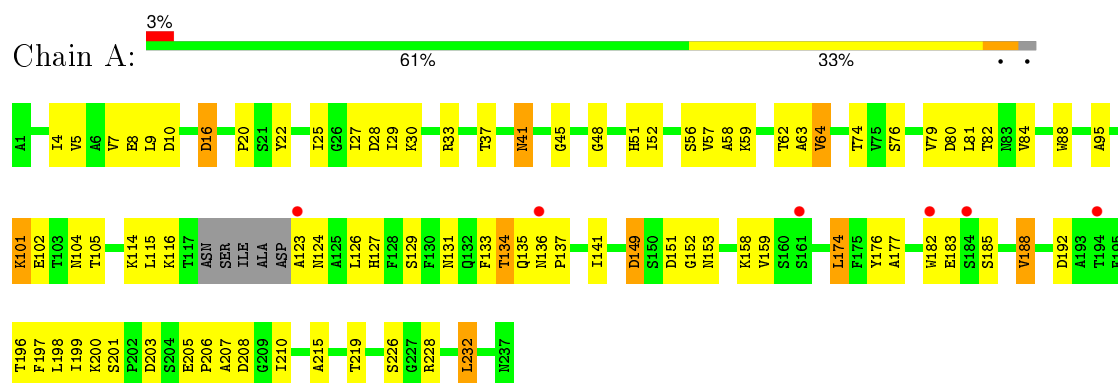
- Molecule 5 is water.

Mol	Chain	Residues	Atoms		ZeroOcc	AltConf
5	A	190	Total	O	0	0
			190	190		
5	C	150	Total	O	0	0
			150	150		
5	E	167	Total	O	0	0
			167	167		
5	G	199	Total	O	0	0
			199	199		

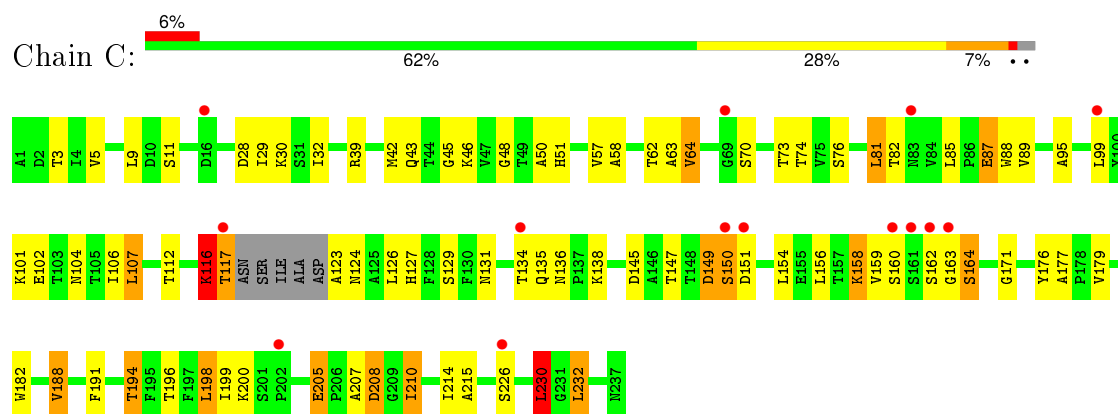
3 Residue-property plots [i](#)

These plots are drawn for all protein, RNA and DNA chains in the entry. The first graphic for a chain summarises the proportions of errors displayed in the second graphic. The second graphic shows the sequence view annotated by issues in geometry and electron density. Residues are color-coded according to the number of geometric quality criteria for which they contain at least one outlier: green = 0, yellow = 1, orange = 2 and red = 3 or more. A red dot above a residue indicates a poor fit to the electron density ($RSRZ > 2$). Stretches of 2 or more consecutive residues without any outlier are shown as a green connector. Residues present in the sample, but not in the model, are shown in grey.

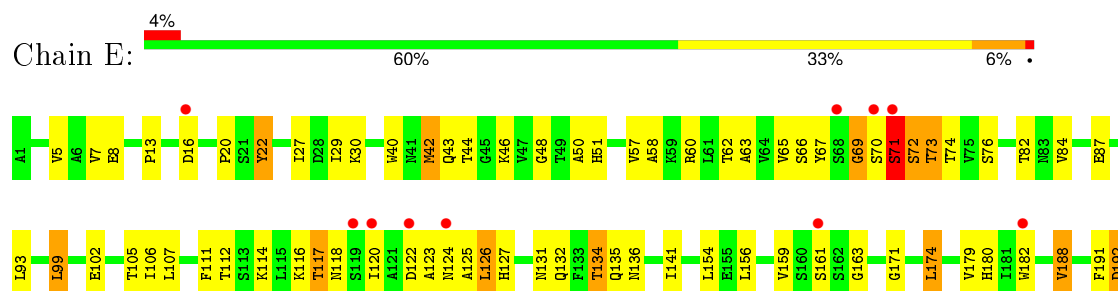
- Molecule 1: *Cymbosoma roseum* mannose-specific lectin



- Molecule 1: *Cymbosoma roseum* mannose-specific lectin

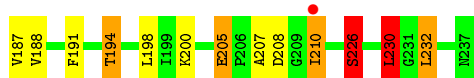
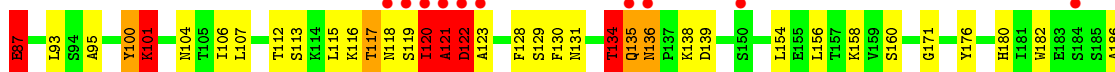


- Molecule 1: *Cymbosoma roseum* mannose-specific lectin





- Molecule 1: *Cymbosema roseum* mannose-specific lectin



4 Data and refinement statistics

Property	Value	Source
Space group	P 21 21 21	Depositor
Cell constants a, b, c, α , β , γ	68.03Å 103.07Å 122.33Å 90.00° 90.00° 90.00°	Depositor
Resolution (Å)	33.12 – 1.80 33.12 – 1.80	Depositor EDS
% Data completeness (in resolution range)	98.2 (33.12-1.80) 98.2 (33.12-1.80)	Depositor EDS
R_{merge}	0.06	Depositor
R_{sym}	(Not available)	Depositor
$\langle I/\sigma(I) \rangle$ ¹	3.13 (at 1.81Å)	Xtriage
Refinement program	REFMAC 5.5.0066	Depositor
R, R_{free}	0.182 , 0.235 0.177 , 0.228	Depositor DCC
R_{free} test set	3952 reflections (5.27%)	DCC
Wilson B-factor (Å ²)	14.2	Xtriage
Anisotropy	0.167	Xtriage
Bulk solvent k_{sol} (e/Å ³), B_{sol} (Å ²)	0.37 , 42.0	EDS
Estimated twinning fraction	No twinning to report.	Xtriage
L-test for twinning ²	$\langle L \rangle = 0.50$, $\langle L^2 \rangle = 0.33$	Xtriage
Outliers	0 of 78885 reflections	Xtriage
F_o, F_c correlation	0.95	EDS
Total number of atoms	7804	wwPDB-VP
Average B, all atoms (Å ²)	15.0	wwPDB-VP

Xtriage's analysis on translational NCS is as follows: *The largest off-origin peak in the Patterson function is 3.82% of the height of the origin peak. No significant pseudotranslation is detected.*

¹Intensities estimated from amplitudes.

²Theoretical values of $\langle |L| \rangle$, $\langle L^2 \rangle$ for acentric reflections are 0.5, 0.375 respectively for untwinned datasets, and 0.333, 0.2 for perfectly twinned datasets.

5 Model quality [i](#)

5.1 Standard geometry [i](#)

Bond lengths and bond angles in the following residue types are not validated in this section: ABA, CA, MN

The Z score for a bond length (or angle) is the number of standard deviations the observed value is removed from the expected value. A bond length (or angle) with $|Z| > 5$ is considered an outlier worth inspection. RMSZ is the root-mean-square of all Z scores of the bond lengths (or angles).

Mol	Chain	Bond lengths		Bond angles	
		RMSZ	$\# Z > 5$	RMSZ	$\# Z > 5$
1	A	1.21	3/1791 (0.2%)	1.36	14/2443 (0.6%)
1	C	1.19	4/1791 (0.2%)	1.26	12/2443 (0.5%)
1	E	1.21	4/1827 (0.2%)	1.32	11/2494 (0.4%)
1	G	1.28	9/1827 (0.5%)	1.43	19/2494 (0.8%)
All	All	1.22	20/7236 (0.3%)	1.34	56/9874 (0.6%)

Chiral center outliers are detected by calculating the chiral volume of a chiral center and verifying if the center is modelled as a planar moiety or with the opposite hand. A planarity outlier is detected by checking planarity of atoms in a peptide group, atoms in a mainchain group or atoms of a sidechain that are expected to be planar.

Mol	Chain	#Chirality outliers	#Planarity outliers
1	C	0	1
1	E	0	2
1	G	0	5
All	All	0	8

All (20) bond length outliers are listed below:

Mol	Chain	Res	Type	Atoms	Z	Observed(Å)	Ideal(Å)
1	G	120	ILE	C-N	9.40	1.55	1.34
1	G	134	THR	C-N	7.49	1.51	1.34
1	A	16	ASP	CB-CG	-7.27	1.36	1.51
1	G	226	SER	CB-OG	7.14	1.51	1.42
1	A	205	GLU	CB-CG	6.43	1.64	1.52
1	C	116	LYS	CB-CG	6.31	1.69	1.52
1	G	205	GLU	CB-CG	5.96	1.63	1.52
1	C	116	LYS	CD-CE	5.86	1.66	1.51
1	E	8	GLU	CD-OE2	-5.75	1.19	1.25
1	E	213	PHE	CE1-CZ	5.75	1.48	1.37
1	G	87	GLU	CG-CD	5.38	1.60	1.51

Continued on next page...

Continued from previous page...

Mol	Chain	Res	Type	Atoms	Z	Observed(Å)	Ideal(Å)
1	E	226	SER	CB-OG	5.34	1.49	1.42
1	G	100	TYR	CD1-CE1	5.31	1.47	1.39
1	G	68	SER	CB-OG	-5.29	1.35	1.42
1	G	16	ASP	CB-CG	-5.28	1.40	1.51
1	E	22	TYR	CD1-CE1	-5.22	1.31	1.39
1	A	205	GLU	CG-CD	-5.13	1.44	1.51
1	C	205	GLU	CB-CG	-5.08	1.42	1.52
1	G	226	SER	CA-CB	5.08	1.60	1.52
1	C	205	GLU	CG-CD	-5.05	1.44	1.51

All (56) bond angle outliers are listed below:

Mol	Chain	Res	Type	Atoms	Z	Observed(°)	Ideal(°)
1	A	16	ASP	CB-CG-OD1	-18.81	101.37	118.30
1	E	210	ILE	CG1-CB-CG2	-15.28	77.78	111.40
1	G	135	GLN	O-C-N	13.41	144.15	122.70
1	G	122	ASP	C-N-CA	12.21	152.23	121.70
1	G	122	ASP	O-C-N	-11.36	104.52	122.70
1	G	135	GLN	C-N-CA	-11.12	93.90	121.70
1	A	16	ASP	CB-CG-OD2	10.85	128.06	118.30
1	G	135	GLN	CA-C-N	-10.77	93.50	117.20
1	E	71	SER	CB-CA-C	-10.41	90.33	110.10
1	G	64	VAL	CG1-CB-CG2	10.35	127.46	110.90
1	A	188	VAL	CB-CA-C	-9.29	93.75	111.40
1	A	64	VAL	CB-CA-C	-8.09	96.03	111.40
1	C	64	VAL	CG1-CB-CG2	8.03	123.75	110.90
1	E	228	ARG	NE-CZ-NH2	-7.75	116.43	120.30
1	E	188	VAL	CB-CA-C	-7.74	96.69	111.40
1	C	64	VAL	CB-CA-C	-7.67	96.83	111.40
1	G	134	THR	O-C-N	-7.62	110.50	122.70
1	G	30	LYS	CD-CE-NZ	-7.59	94.23	111.70
1	G	230	LEU	CB-CG-CD1	7.42	123.61	111.00
1	E	192	ASP	CB-CG-OD2	-7.33	111.70	118.30
1	C	150	SER	N-CA-CB	7.29	121.43	110.50
1	A	64	VAL	CA-CB-CG2	7.26	121.79	110.90
1	G	69	GLY	N-CA-C	-7.03	95.51	113.10
1	E	126	LEU	CA-CB-CG	-7.00	99.19	115.30
1	E	99	LEU	CB-CG-CD2	7.00	122.90	111.00
1	G	16	ASP	N-CA-CB	-6.98	98.04	110.60
1	C	149	ASP	C-N-CA	-6.87	104.54	121.70
1	C	150	SER	CA-CB-OG	-6.47	93.73	111.20
1	G	64	VAL	CB-CA-C	-6.42	99.20	111.40

Continued on next page...

Continued from previous page...

Mol	Chain	Res	Type	Atoms	Z	Observed(°)	Ideal(°)
1	G	123	ALA	CB-CA-C	-6.36	100.56	110.10
1	E	42	MET	CB-CG-SD	-6.30	93.51	112.40
1	A	64	VAL	CG1-CB-CG2	6.26	120.92	110.90
1	A	232	LEU	CB-CG-CD1	6.08	121.33	111.00
1	E	72	SER	N-CA-C	5.75	126.52	111.00
1	G	232	LEU	CB-CG-CD1	5.68	120.66	111.00
1	E	192	ASP	CB-CG-OD1	5.61	123.35	118.30
1	C	107	LEU	CB-CG-CD1	-5.53	101.60	111.00
1	A	10	ASP	CB-CG-OD1	-5.51	113.34	118.30
1	C	64	VAL	CA-CB-CG2	5.44	119.06	110.90
1	G	123	ALA	O-C-N	5.43	131.39	122.70
1	A	192	ASP	CB-CG-OD1	5.43	123.19	118.30
1	A	33	ARG	NE-CZ-NH2	-5.40	117.60	120.30
1	A	115	LEU	CB-CA-C	-5.39	99.95	110.20
1	A	126	LEU	CA-CB-CG	-5.33	103.05	115.30
1	C	116	LYS	CD-CE-NZ	5.32	123.94	111.70
1	C	230	LEU	CB-CG-CD1	5.32	120.05	111.00
1	E	232	LEU	CB-CG-CD1	5.31	120.02	111.00
1	G	101	LYS	CD-CE-NZ	-5.29	99.54	111.70
1	A	149	ASP	CB-CG-OD1	5.28	123.05	118.30
1	G	139	ASP	CB-CG-OD2	-5.27	113.56	118.30
1	G	121	ALA	O-C-N	5.26	131.12	122.70
1	C	232	LEU	CB-CG-CD1	5.25	119.93	111.00
1	C	188	VAL	CB-CA-C	-5.21	101.50	111.40
1	G	134	THR	C-N-CA	5.16	134.59	121.70
1	C	9	LEU	N-CA-C	-5.03	97.43	111.00
1	A	115	LEU	CB-CG-CD1	-5.02	102.46	111.00

There are no chirality outliers.

All (8) planarity outliers are listed below:

Mol	Chain	Res	Type	Group
1	C	116	LYS	Peptide
1	E	69	GLY	Peptide
1	E	71	SER	Peptide
1	G	120	ILE	Peptide
1	G	121	ALA	Peptide
1	G	122	ASP	Peptide
1	G	134	THR	Mainchain
1	G	68	SER	Peptide

5.2 Too-close contacts ⓘ

In the following table, the Non-H and H(model) columns list the number of non-hydrogen atoms and hydrogen atoms in the chain respectively. The H(added) column lists the number of hydrogen atoms added and optimized by MolProbity. The Clashes column lists the number of clashes within the asymmetric unit, whereas Symm-Clashes lists symmetry related clashes.

Mol	Chain	Non-H	H(model)	H(added)	Clashes	Symm-Clashes
1	A	1752	0	1701	109	2
1	C	1752	0	1703	142	0
1	E	1787	0	1735	128	3
1	G	1787	0	1732	133	1
2	A	1	0	0	0	0
2	C	1	0	0	0	0
2	E	1	0	0	0	0
2	G	1	0	0	0	0
3	A	1	0	0	0	0
3	C	1	0	0	0	0
3	E	1	0	0	0	0
3	G	1	0	0	0	0
4	E	6	0	8	10	0
4	G	6	0	8	2	0
5	A	190	0	0	11	3
5	C	150	0	0	9	1
5	E	167	0	0	15	2
5	G	199	0	0	21	8
All	All	7804	0	6887	430	10

The all-atom clashscore is defined as the number of clashes found per 1000 atoms (including hydrogen atoms). The all-atom clashscore for this structure is 31.

All (430) close contacts within the same asymmetric unit are listed below, sorted by their clash magnitude.

Atom-1	Atom-2	Interatomic distance (Å)	Clash overlap (Å)
1:E:123:ALA:HA	1:G:131:ASN:ND2	1.20	1.42
1:A:95:ALA:CB	1:A:210:ILE:HG22	1.52	1.39
1:A:131:ASN:OD1	1:C:123:ALA:CA	1.68	1.39
4:E:240:ABA:HA	5:E:540:HOH:O	1.16	1.32
1:E:67:TYR:HD2	1:E:71:SER:OG	1.01	1.31
1:E:71:SER:HB2	5:E:327:HOH:O	1.19	1.29
1:E:226:SER:HB3	5:E:585:HOH:O	1.34	1.28
1:C:95:ALA:CB	1:C:210:ILE:HG22	1.65	1.26
1:A:123:ALA:N	1:C:131:ASN:HD22	1.31	1.26

Continued on next page...

Continued from previous page...

Atom-1	Atom-2	Interatomic distance (Å)	Clash overlap (Å)
1:E:43:GLN:NE2	1:E:70:SER:HB2	1.48	1.25
1:A:226:SER:HB2	5:A:264:HOH:O	1.35	1.24
1:C:134:THR:HG22	1:C:136:ASN:H	1.06	1.20
1:G:87:GLU:OE1	1:G:182:TRP:HB3	1.39	1.20
1:E:123:ALA:CA	1:G:131:ASN:ND2	2.03	1.19
1:C:42:MET:CE	5:C:665:HOH:O	1.65	1.19
1:E:124:ASN:OD1	1:G:130:PHE:HA	1.38	1.17
1:C:42:MET:HE3	5:C:665:HOH:O	1.18	1.17
1:A:64:VAL:HG21	1:G:188:VAL:HG21	1.27	1.16
1:A:134:THR:HG22	5:A:317:HOH:O	1.45	1.14
1:E:117:THR:HG23	1:E:118:ASN:H	1.10	1.13
1:G:198:LEU:CD1	1:G:200:LYS:HG3	1.78	1.13
1:C:116:LYS:HD2	1:C:117:THR:OG1	1.46	1.11
1:C:226:SER:OG	5:C:690:HOH:O	1.69	1.10
1:G:134:THR:HG22	1:G:136:ASN:H	1.05	1.10
1:A:131:ASN:OD1	1:C:123:ALA:HA	0.89	1.06
1:E:62:THR:HG22	1:E:76:SER:OG	1.55	1.06
1:A:123:ALA:N	1:C:131:ASN:ND2	2.04	1.05
1:C:131:ASN:OD1	1:E:120:ILE:HD11	1.56	1.05
1:E:71:SER:CB	5:E:327:HOH:O	1.82	1.05
1:C:150:SER:OG	1:C:151:ASP:N	1.85	1.05
1:A:123:ALA:HB3	1:C:131:ASN:HD21	1.16	1.03
1:G:198:LEU:HD11	1:G:200:LYS:HG3	1.42	1.02
1:A:134:THR:HG21	1:C:88:TRP:HZ2	1.21	1.02
1:E:117:THR:HG23	1:E:118:ASN:N	1.69	1.02
1:A:95:ALA:HB2	1:A:210:ILE:CG2	1.90	1.01
1:C:95:ALA:HB2	1:C:210:ILE:HG22	1.03	1.01
1:C:150:SER:O	1:C:151:ASP:HB2	1.59	1.00
1:A:176:TYR:CE1	1:C:176:TYR:CE1	2.50	1.00
1:E:67:TYR:CD2	1:E:71:SER:OG	1.89	1.00
1:A:95:ALA:HB2	1:A:210:ILE:HG22	1.00	0.98
1:A:64:VAL:HG21	1:G:188:VAL:CG2	1.93	0.98
1:E:205:GLU:HG2	5:E:263:HOH:O	1.63	0.98
1:A:82:THR:HG23	5:A:250:HOH:O	1.62	0.98
1:G:134:THR:HG22	1:G:136:ASN:N	1.77	0.98
1:C:95:ALA:HB2	1:C:210:ILE:CG2	1.95	0.97
1:G:187:VAL:HG12	1:G:188:VAL:HG23	1.47	0.97
1:A:95:ALA:CB	1:A:210:ILE:CG2	2.43	0.97
1:A:131:ASN:CG	1:C:123:ALA:HA	1.85	0.96
1:E:123:ALA:O	1:E:124:ASN:CG	2.06	0.94
1:C:135:GLN:H	1:C:135:GLN:NE2	1.66	0.93

Continued on next page...

Continued from previous page...

Atom-1	Atom-2	Interatomic distance (Å)	Clash overlap (Å)
5:E:442:HOH:O	1:G:138:LYS:HE2	1.68	0.93
1:C:159:VAL:CG1	1:C:163:GLY:HA2	1.97	0.93
1:E:123:ALA:HA	1:G:131:ASN:HD22	1.32	0.92
1:A:104:ASN:OD1	1:A:210:ILE:HG23	1.70	0.92
1:E:123:ALA:HA	1:G:131:ASN:HD21	1.33	0.91
1:C:64:VAL:HG13	1:C:74:THR:HG22	1.51	0.91
1:C:51:HIS:HD2	1:C:194:THR:CG2	1.83	0.91
1:E:43:GLN:NE2	1:E:70:SER:CB	2.33	0.91
1:G:28:ASP:O	1:G:29:ILE:HD13	1.71	0.91
1:C:135:GLN:CD	1:C:135:GLN:H	1.75	0.90
1:G:198:LEU:HD11	1:G:200:LYS:CG	2.02	0.90
1:A:64:VAL:CG2	1:G:188:VAL:HG21	2.02	0.89
1:G:198:LEU:HD13	1:G:200:LYS:HG3	1.53	0.89
1:A:95:ALA:HB1	1:A:210:ILE:HG22	1.54	0.89
1:A:57:VAL:HG23	1:A:188:VAL:HG13	1.52	0.89
1:A:64:VAL:HG13	1:A:74:THR:HG22	1.54	0.88
1:G:120:ILE:HG22	1:G:121:ALA:O	1.73	0.88
1:G:42:MET:HB2	5:G:599:HOH:O	1.72	0.87
1:G:134:THR:CG2	1:G:136:ASN:H	1.87	0.87
1:A:176:TYR:HE1	1:C:176:TYR:CE1	1.93	0.87
1:A:123:ALA:HB3	1:C:131:ASN:ND2	1.90	0.86
1:E:159:VAL:CG1	1:E:163:GLY:HA2	2.05	0.86
1:C:134:THR:HG22	1:C:136:ASN:N	1.91	0.86
1:C:104:ASN:OD1	1:C:210:ILE:HG23	1.76	0.85
1:G:80:ASP:OD1	1:G:82:THR:HG22	1.77	0.85
1:G:51:HIS:HD2	1:G:194:THR:CG2	1.88	0.85
1:E:57:VAL:HG23	1:E:188:VAL:HG13	1.60	0.84
1:G:87:GLU:CD	5:G:563:HOH:O	2.15	0.83
1:G:62:THR:HG22	1:G:76:SER:OG	1.78	0.83
1:E:43:GLN:HE21	1:E:70:SER:HB2	1.44	0.83
1:A:176:TYR:CE1	1:C:176:TYR:HE1	1.95	0.83
1:C:28:ASP:O	1:C:29:ILE:HD13	1.78	0.83
1:E:124:ASN:HB3	4:E:240:ABA:N	1.94	0.82
1:E:117:THR:CG2	1:E:118:ASN:N	2.41	0.82
1:E:43:GLN:HE22	1:E:70:SER:N	1.78	0.81
1:G:42:MET:HG2	5:G:541:HOH:O	1.80	0.81
1:A:123:ALA:CB	1:C:131:ASN:HD21	1.92	0.81
1:C:159:VAL:HG12	1:C:163:GLY:HA2	1.63	0.81
1:C:159:VAL:CG1	1:C:163:GLY:C	2.50	0.80
1:C:95:ALA:CB	1:C:210:ILE:CG2	2.55	0.79
1:C:159:VAL:CG1	1:C:163:GLY:CA	2.60	0.79

Continued on next page...

Continued from previous page...

Atom-1	Atom-2	Interatomic distance (Å)	Clash overlap (Å)
1:C:159:VAL:HG13	1:C:163:GLY:C	2.02	0.79
1:A:123:ALA:CA	1:C:131:ASN:ND2	2.44	0.79
1:A:134:THR:HG21	1:C:88:TRP:CZ2	2.12	0.78
1:G:28:ASP:C	1:G:29:ILE:HD13	2.04	0.78
1:A:123:ALA:CB	1:C:131:ASN:ND2	2.47	0.77
1:A:41:ASN:HD22	1:A:41:ASN:H	1.31	0.77
1:A:82:THR:HG21	1:A:182:TRP:CD2	2.20	0.77
1:E:40:TRP:HA	1:E:73:THR:HG21	1.66	0.77
1:A:123:ALA:CA	1:C:131:ASN:HD22	1.98	0.76
1:C:116:LYS:HE3	1:E:51:HIS:HE1	1.50	0.76
1:G:43:GLN:OE1	1:G:46:LYS:CD	2.33	0.75
1:E:123:ALA:CA	1:G:131:ASN:HD22	1.88	0.75
1:C:62:THR:HG21	1:E:58:ALA:HB2	1.69	0.75
4:E:240:ABA:C	5:E:558:HOH:O	2.35	0.74
1:C:51:HIS:HD2	1:C:194:THR:HG21	1.52	0.74
1:G:51:HIS:CD2	1:G:194:THR:HB	2.23	0.73
1:C:159:VAL:HG11	1:C:163:GLY:HA2	1.70	0.73
1:A:104:ASN:OD1	1:A:210:ILE:CG2	2.36	0.73
1:A:41:ASN:H	1:A:41:ASN:ND2	1.85	0.73
1:G:87:GLU:CG	5:G:563:HOH:O	2.37	0.73
1:E:131:ASN:HD22	1:G:122:ASP:C	1.91	0.72
1:E:114:LYS:HG2	1:E:122:ASP:OD2	1.89	0.72
1:G:198:LEU:HD11	1:G:200:LYS:CD	2.20	0.71
1:C:149:ASP:OD2	1:C:150:SER:O	2.09	0.71
1:G:30:LYS:HD3	1:G:84:VAL:HG13	1.71	0.71
1:A:101:LYS:NZ	1:A:203:ASP:OD1	2.24	0.71
1:G:205:GLU:OE2	5:G:623:HOH:O	2.08	0.71
1:E:159:VAL:HG13	1:E:163:GLY:C	2.11	0.71
1:G:226:SER:HB3	5:G:347:HOH:O	1.90	0.70
1:C:104:ASN:HB3	1:C:210:ILE:HG21	1.73	0.70
1:E:123:ALA:O	1:E:124:ASN:OD1	2.09	0.70
1:E:124:ASN:HB3	4:E:240:ABA:CA	2.21	0.70
1:G:51:HIS:HD2	1:G:194:THR:HG21	1.56	0.70
1:G:87:GLU:HG3	5:G:563:HOH:O	1.92	0.70
1:G:113:SER:OG	4:G:240:ABA:HG2	1.92	0.70
1:E:66:SER:HA	1:E:71:SER:O	1.93	0.69
1:C:62:THR:HG22	1:C:76:SER:OG	1.92	0.69
1:A:131:ASN:OD1	1:C:123:ALA:C	2.32	0.69
1:G:42:MET:CB	5:G:541:HOH:O	2.40	0.69
1:G:43:GLN:OE1	1:G:46:LYS:HD3	1.91	0.68
1:C:116:LYS:CD	1:C:117:THR:OG1	2.35	0.68

Continued on next page...

Continued from previous page...

Atom-1	Atom-2	Interatomic distance (Å)	Clash overlap (Å)
1:G:226:SER:CB	5:G:347:HOH:O	2.41	0.68
1:E:43:GLN:HE22	1:E:70:SER:HB2	1.53	0.68
1:C:51:HIS:CD2	1:C:194:THR:HB	2.29	0.68
1:E:226:SER:CB	5:E:585:HOH:O	2.07	0.67
1:C:116:LYS:CD	1:C:117:THR:HA	2.23	0.67
1:C:95:ALA:HB1	1:C:210:ILE:HG22	1.71	0.67
1:C:135:GLN:N	1:C:135:GLN:CD	2.46	0.67
1:C:126:LEU:CD2	1:C:179:VAL:HG22	2.24	0.67
4:E:240:ABA:HG1	1:G:128:PHE:HB2	1.77	0.67
1:C:58:ALA:HA	1:E:62:THR:HG21	1.75	0.67
1:A:151:ASP:HB2	5:A:692:HOH:O	1.94	0.67
1:C:150:SER:O	1:C:151:ASP:CB	2.34	0.66
1:A:29:ILE:HD12	1:A:79:VAL:HG21	1.76	0.66
1:G:32:ILE:HD11	1:G:230:LEU:HD22	1.76	0.66
1:C:51:HIS:CD2	1:C:194:THR:CG2	2.74	0.66
1:E:123:ALA:C	1:G:131:ASN:HD22	1.99	0.66
1:A:62:THR:HG22	1:A:76:SER:OG	1.96	0.66
1:A:95:ALA:HB1	1:A:210:ILE:CG2	2.18	0.65
1:E:82:THR:HG22	1:E:182:TRP:CG	2.31	0.65
1:C:107:LEU:HD12	1:C:107:LEU:N	2.11	0.65
1:C:58:ALA:CA	1:E:62:THR:HG21	2.27	0.65
1:E:159:VAL:CG1	1:E:163:GLY:CA	2.75	0.64
1:C:32:ILE:HD11	1:C:230:LEU:HD22	1.79	0.64
1:C:51:HIS:CD2	1:C:194:THR:HG21	2.31	0.64
1:C:62:THR:HG21	1:E:58:ALA:CA	2.28	0.64
1:C:57:VAL:HG13	1:E:74:THR:HG23	1.80	0.64
1:C:87:GLU:HB3	1:C:182:TRP:O	1.98	0.64
1:G:156:LEU:O	1:G:171:GLY:HA3	1.98	0.64
1:C:82:THR:HG22	1:C:182:TRP:HB2	1.79	0.64
1:E:123:ALA:CA	1:G:131:ASN:HD21	1.96	0.63
1:C:158:LYS:HZ2	1:C:158:LYS:CB	2.11	0.63
1:C:62:THR:HG21	1:E:58:ALA:CB	2.29	0.62
1:A:88:TRP:CG	1:C:138:LYS:HD2	2.35	0.62
1:E:159:VAL:HG11	1:E:163:GLY:HA2	1.82	0.61
1:A:58:ALA:CA	1:G:62:THR:HG21	2.30	0.61
1:C:158:LYS:HD3	5:C:389:HOH:O	2.00	0.61
1:E:124:ASN:OD1	1:G:130:PHE:CA	2.32	0.61
1:E:43:GLN:HE22	1:E:70:SER:CA	2.14	0.61
1:E:82:THR:HG22	1:E:182:TRP:CB	2.31	0.61
1:A:20:PRO:HB2	1:A:22:TYR:CZ	2.36	0.60
1:A:176:TYR:CD1	1:C:176:TYR:CE1	2.88	0.60

Continued on next page...

Continued from previous page...

Atom-1	Atom-2	Interatomic distance (Å)	Clash overlap (Å)
1:G:187:VAL:C	1:G:188:VAL:HG23	2.20	0.60
1:E:116:LYS:HG2	1:E:122:ASP:OD1	2.02	0.60
1:C:104:ASN:HB3	1:C:210:ILE:CG2	2.33	0.59
1:E:43:GLN:HE22	1:E:70:SER:H	1.48	0.59
1:C:158:LYS:CB	1:C:158:LYS:NZ	2.64	0.58
1:A:41:ASN:ND2	1:A:41:ASN:N	2.50	0.58
1:G:82:THR:HG21	5:G:634:HOH:O	2.02	0.58
1:G:64:VAL:HG13	1:G:74:THR:HG22	1.85	0.58
1:E:123:ALA:HA	1:G:131:ASN:CG	2.14	0.58
1:E:132:GLN:HE22	1:G:117:THR:HB	1.68	0.58
1:C:207:ALA:HB1	1:C:208:ASP:HA	1.85	0.58
1:A:58:ALA:HA	1:G:62:THR:HG21	1.87	0.57
1:E:126:LEU:HD22	1:E:179:VAL:HG22	1.86	0.57
1:C:116:LYS:HD2	1:C:117:THR:CA	2.34	0.57
1:A:82:THR:CG2	1:A:182:TRP:CD2	2.86	0.57
1:E:131:ASN:ND2	1:G:122:ASP:C	2.57	0.57
1:E:159:VAL:HG12	1:E:163:GLY:HA2	1.87	0.57
1:G:51:HIS:CD2	1:G:194:THR:CG2	2.80	0.57
1:E:62:THR:CG2	1:E:76:SER:OG	2.42	0.56
1:C:116:LYS:HD2	1:C:117:THR:CB	2.33	0.56
1:A:176:TYR:CD1	1:C:176:TYR:CD1	2.93	0.56
1:E:131:ASN:HB3	1:G:120:ILE:HG21	1.87	0.56
1:A:30:LYS:HA	5:A:323:HOH:O	2.04	0.56
1:C:116:LYS:HD2	1:C:117:THR:HA	1.86	0.56
1:C:106:ILE:HB	1:C:154:LEU:HB3	1.86	0.56
1:G:43:GLN:OE1	1:G:46:LYS:HD2	2.05	0.56
1:C:28:ASP:C	1:C:29:ILE:HD13	2.26	0.56
1:A:174:LEU:HD21	1:A:219:THR:HG23	1.88	0.56
1:A:102:GLU:HB2	1:A:199:ILE:HG23	1.88	0.56
1:G:51:HIS:CD2	1:G:194:THR:HG21	2.39	0.56
1:C:159:VAL:HG12	1:C:163:GLY:CA	2.30	0.55
1:A:136:ASN:HB3	5:A:582:HOH:O	2.04	0.55
1:C:156:LEU:O	1:C:171:GLY:HA3	2.05	0.55
1:E:134:THR:HG22	1:E:136:ASN:H	1.69	0.55
4:E:240:ABA:HB3	1:G:130:PHE:CE1	2.41	0.55
1:G:82:THR:OG1	1:G:182:TRP:CG	2.58	0.55
1:C:82:THR:HG22	1:C:182:TRP:CB	2.37	0.55
1:C:81:LEU:HG	1:C:85:LEU:HD12	1.88	0.55
1:G:39:ARG:O	1:G:73:THR:HG23	2.06	0.55
1:E:125:ALA:O	4:E:240:ABA:HB2	2.06	0.55
1:G:180:HIS:H	4:G:240:ABA:HN2	1.52	0.55

Continued on next page...

Continued from previous page...

Atom-1	Atom-2	Interatomic distance (Å)	Clash overlap (Å)
1:C:158:LYS:HZ2	1:C:158:LYS:HB2	1.70	0.55
1:E:60:ARG:HG2	1:E:62:THR:CG2	2.37	0.54
1:A:51:HIS:HB2	1:A:64:VAL:HG23	1.90	0.54
1:G:70:SER:OG	5:G:568:HOH:O	2.02	0.54
1:G:198:LEU:HD11	1:G:200:LYS:HD3	1.87	0.54
1:C:39:ARG:O	1:C:73:THR:HG23	2.07	0.54
1:A:114:LYS:HD3	1:A:116:LYS:NZ	2.23	0.54
1:C:62:THR:CG2	1:E:58:ALA:HB2	2.37	0.54
1:A:104:ASN:HB3	1:A:210:ILE:HG21	1.90	0.54
1:C:64:VAL:HG21	1:E:188:VAL:HG22	1.90	0.54
1:C:207:ALA:CB	1:C:208:ASP:HA	2.38	0.54
1:G:187:VAL:O	1:G:188:VAL:CG2	2.56	0.53
1:A:134:THR:CG2	1:C:88:TRP:HZ2	2.08	0.53
1:E:205:GLU:CG	5:E:263:HOH:O	2.34	0.53
1:G:5:VAL:HG13	1:G:29:ILE:HD12	1.89	0.53
1:E:82:THR:HG23	5:E:278:HOH:O	2.09	0.53
1:A:62:THR:HG21	1:G:58:ALA:CA	2.38	0.53
1:E:106:ILE:HB	1:E:154:LEU:HB3	1.91	0.53
1:E:60:ARG:HG2	1:E:62:THR:HG23	1.90	0.53
1:C:198:LEU:HD22	1:C:200:LYS:HG3	1.89	0.53
1:A:82:THR:HG21	1:A:182:TRP:CE3	2.43	0.53
1:G:23:PRO:HB2	1:G:42:MET:HG3	1.89	0.53
1:E:43:GLN:HE22	1:E:70:SER:CB	2.13	0.52
1:C:57:VAL:CG1	1:E:74:THR:HG23	2.40	0.52
1:C:158:LYS:HE3	5:C:389:HOH:O	2.10	0.52
1:E:126:LEU:HB2	4:E:240:ABA:HG3	1.92	0.51
1:E:132:GLN:CD	1:G:120:ILE:HG13	2.30	0.51
1:C:5:VAL:HG13	1:C:29:ILE:CD1	2.39	0.51
1:C:64:VAL:HG13	1:C:74:THR:CG2	2.32	0.51
1:E:126:LEU:HG	1:E:127:HIS:N	2.20	0.51
1:G:23:PRO:CB	1:G:42:MET:HG3	2.41	0.51
1:E:71:SER:O	1:E:71:SER:OG	2.26	0.51
1:E:131:ASN:HD21	1:G:122:ASP:CB	2.24	0.51
1:G:82:THR:CG2	5:G:634:HOH:O	2.57	0.51
1:A:127:HIS:HB3	1:C:127:HIS:HB3	1.92	0.51
1:A:105:THR:O	1:A:197:PHE:HA	2.11	0.50
1:A:104:ASN:CG	1:A:210:ILE:CG2	2.79	0.50
1:A:51:HIS:NE2	1:G:116:LYS:HG2	2.27	0.50
1:C:159:VAL:HG13	1:C:163:GLY:O	2.11	0.50
1:C:82:THR:HG22	1:C:182:TRP:CG	2.46	0.50
1:C:95:ALA:HB1	1:C:210:ILE:CG2	2.37	0.50

Continued on next page...

Continued from previous page...

Atom-1	Atom-2	Interatomic distance (Å)	Clash overlap (Å)
1:E:159:VAL:CG1	1:E:163:GLY:C	2.79	0.50
1:C:45:GLY:HA2	1:C:200:LYS:HG2	1.93	0.50
1:G:106:ILE:HB	1:G:154:LEU:HB3	1.94	0.50
1:E:132:GLN:NE2	1:G:120:ILE:HG13	2.27	0.50
1:E:124:ASN:HA	1:G:129:SER:O	2.11	0.50
1:A:62:THR:HG21	1:G:58:ALA:HB2	1.93	0.50
1:C:51:HIS:CD2	1:C:194:THR:CB	2.94	0.49
1:E:134:THR:HB	5:E:598:HOH:O	2.11	0.49
1:A:64:VAL:HG13	1:A:74:THR:CG2	2.36	0.49
1:G:187:VAL:C	1:G:188:VAL:CG2	2.81	0.49
1:C:104:ASN:OD1	1:C:210:ILE:CG2	2.57	0.49
1:C:126:LEU:HD23	1:C:179:VAL:HG22	1.93	0.49
1:C:57:VAL:HG13	1:E:74:THR:CG2	2.42	0.49
1:A:95:ALA:HB1	1:A:104:ASN:CG	2.33	0.49
1:A:134:THR:HG23	1:A:137:PRO:HA	1.94	0.49
1:A:134:THR:OG1	1:A:135:GLN:N	2.45	0.49
1:G:107:LEU:HD12	1:G:107:LEU:N	2.28	0.49
1:G:64:VAL:HG12	1:G:72:SER:HB2	1.95	0.48
1:E:180:HIS:CE1	1:G:134:THR:OG1	2.66	0.48
1:G:23:PRO:HG2	1:G:42:MET:CE	2.43	0.48
1:G:51:HIS:HD2	1:G:194:THR:CB	2.24	0.48
1:E:131:ASN:HB3	1:G:120:ILE:CG2	2.44	0.48
1:C:62:THR:HG21	1:E:58:ALA:HA	1.95	0.48
1:G:118:ASN:OD1	1:G:119:SER:N	2.46	0.48
1:G:62:THR:HG22	1:G:76:SER:CB	2.42	0.48
1:A:59:LYS:HE3	1:A:80:ASP:OD2	2.13	0.48
1:E:42:MET:CE	1:E:206:PRO:HG2	2.43	0.48
1:E:131:ASN:ND2	1:G:122:ASP:CA	2.77	0.48
1:A:134:THR:CG2	1:A:137:PRO:HA	2.44	0.48
1:E:141:ILE:HB	1:E:174:LEU:HB2	1.96	0.48
1:A:176:TYR:HD1	1:C:176:TYR:CD1	2.31	0.48
1:A:129:SER:O	1:C:124:ASN:HA	2.14	0.48
1:A:9:LEU:HD12	1:A:9:LEU:N	2.29	0.48
1:C:42:MET:HE1	5:C:665:HOH:O	1.63	0.47
1:A:176:TYR:HD1	1:C:176:TYR:HD1	1.62	0.47
1:E:123:ALA:CB	1:G:131:ASN:HD21	2.27	0.47
1:G:54:TYR:CD1	1:G:81:LEU:HD22	2.49	0.47
1:E:134:THR:HG22	1:E:136:ASN:N	2.30	0.47
1:C:51:HIS:HB2	1:C:64:VAL:HG23	1.96	0.47
1:E:67:TYR:N	1:E:71:SER:O	2.47	0.47
1:E:112:THR:O	1:E:191:PHE:HA	2.15	0.47

Continued on next page...

Continued from previous page...

Atom-1	Atom-2	Interatomic distance (Å)	Clash overlap (Å)
1:G:51:HIS:CD2	1:G:194:THR:CB	2.96	0.47
1:E:50:ALA:O	1:E:194:THR:HA	2.14	0.47
1:E:217:THR:HG21	1:G:138:LYS:HE3	1.97	0.47
1:A:58:ALA:HB2	1:G:62:THR:HG21	1.97	0.47
1:E:122:ASP:OD2	1:E:125:ALA:HB2	2.15	0.46
1:E:123:ALA:C	1:G:131:ASN:ND2	2.59	0.46
1:A:176:TYR:CE1	1:C:176:TYR:CD1	3.01	0.46
1:E:71:SER:HB3	5:E:290:HOH:O	2.15	0.46
1:G:5:VAL:HG13	1:G:29:ILE:CD1	2.46	0.46
1:G:100:TYR:HB2	1:G:207:ALA:HB3	1.97	0.46
1:G:134:THR:CG2	1:G:135:GLN:N	2.78	0.46
1:G:200:LYS:HE3	5:G:458:HOH:O	2.16	0.46
1:E:65:VAL:O	1:E:72:SER:HA	2.16	0.46
1:C:57:VAL:HG23	1:C:188:VAL:HG13	1.96	0.46
1:G:51:HIS:HD2	1:G:194:THR:HB	1.70	0.46
1:A:101:LYS:HZ3	1:A:101:LYS:HG2	1.55	0.46
1:A:62:THR:HG21	1:G:58:ALA:HA	1.97	0.46
1:C:43:GLN:HE22	1:C:70:SER:CB	2.28	0.46
1:C:104:ASN:CG	1:C:210:ILE:HG23	2.35	0.46
1:G:42:MET:HB2	5:G:541:HOH:O	2.12	0.46
1:G:9:LEU:HB2	1:G:210:ILE:HG22	1.98	0.45
1:C:3:THR:O	1:C:215:ALA:HA	2.16	0.45
1:E:180:HIS:HE1	1:G:134:THR:OG1	1.98	0.45
1:C:116:LYS:HD3	1:C:117:THR:HA	1.96	0.45
1:A:25:ILE:O	1:A:37:THR:HA	2.15	0.45
1:G:210:ILE:HD13	1:G:210:ILE:HG21	1.69	0.45
1:C:51:HIS:HD2	1:C:194:THR:CB	2.24	0.45
1:G:39:ARG:O	1:G:73:THR:CG2	2.65	0.45
1:G:187:VAL:O	1:G:188:VAL:HG23	2.17	0.45
1:A:134:THR:HG23	1:A:137:PRO:CA	2.47	0.45
1:C:46:LYS:HA	1:C:46:LYS:HD3	1.69	0.45
1:E:117:THR:CG2	1:E:118:ASN:H	1.93	0.44
1:G:93:LEU:HD13	1:G:106:ILE:HG13	1.99	0.44
1:A:159:VAL:CG2	5:A:256:HOH:O	2.66	0.44
1:G:59:LYS:HD3	1:G:80:ASP:HB2	1.99	0.44
1:E:156:LEU:O	1:E:171:GLY:HA3	2.17	0.44
1:C:102:GLU:HB2	1:C:199:ILE:HG23	1.98	0.44
1:A:82:THR:CG2	5:A:250:HOH:O	2.39	0.44
1:G:160:SER:HB2	5:G:291:HOH:O	2.17	0.44
1:A:201:SER:CB	1:A:206:PRO:HB3	2.46	0.44
1:A:133:PHE:O	1:A:152:GLY:HA2	2.18	0.44

Continued on next page...

Continued from previous page...

Atom-1	Atom-2	Interatomic distance (Å)	Clash overlap (Å)
1:C:57:VAL:HG12	1:E:62:THR:HB	2.00	0.44
1:E:102:GLU:HB2	1:E:199:ILE:HG23	1.97	0.44
4:E:240:ABA:HB3	1:G:130:PHE:CD1	2.53	0.44
1:C:194:THR:HG21	5:E:694:HOH:O	2.16	0.44
1:E:93:LEU:HA	1:E:211:THR:O	2.18	0.44
1:E:71:SER:HB3	5:E:327:HOH:O	1.82	0.44
1:C:158:LYS:HG2	1:C:158:LYS:HZ3	1.37	0.44
1:C:205:GLU:HB2	5:C:275:HOH:O	2.17	0.44
1:G:134:THR:HG22	1:G:135:GLN:N	2.31	0.44
1:C:58:ALA:CB	1:E:62:THR:HG21	2.48	0.44
1:E:93:LEU:HD23	1:E:212:PHE:HA	1.99	0.44
1:A:4:ILE:HD13	1:A:215:ALA:HB2	2.00	0.44
1:A:123:ALA:O	1:A:124:ASN:C	2.56	0.43
1:C:48:GLY:O	1:C:196:THR:HA	2.18	0.43
1:G:51:HIS:HB2	1:G:64:VAL:HG23	2.00	0.43
1:A:159:VAL:HG23	1:A:159:VAL:O	2.18	0.43
1:A:153:ASN:HB2	5:A:692:HOH:O	2.18	0.43
1:E:114:LYS:CG	1:E:122:ASP:OD2	2.63	0.43
1:G:95:ALA:HB1	1:G:104:ASN:CG	2.39	0.43
1:E:210:ILE:HG21	1:E:210:ILE:HD13	1.05	0.43
1:A:131:ASN:OD1	1:C:123:ALA:N	2.43	0.43
1:A:58:ALA:CB	1:G:62:THR:HG21	2.49	0.43
1:A:29:ILE:HG23	1:A:84:VAL:HG11	1.99	0.43
1:C:159:VAL:HG11	1:C:163:GLY:CA	2.39	0.43
1:E:20:PRO:HB2	1:E:22:TYR:CZ	2.54	0.43
1:G:29:ILE:N	1:G:29:ILE:HD13	2.31	0.43
1:A:62:THR:CG2	1:A:76:SER:OG	2.65	0.43
1:A:5:VAL:HG21	1:A:81:LEU:HD22	2.01	0.43
1:E:16:ASP:OD2	1:E:16:ASP:N	2.50	0.43
1:E:5:VAL:HG13	1:E:29:ILE:CD1	2.49	0.42
1:C:58:ALA:HB2	1:E:62:THR:HG21	2.01	0.42
1:G:42:MET:HE2	5:G:288:HOH:O	2.18	0.42
1:G:78:ASP:HB3	5:G:290:HOH:O	2.19	0.42
1:E:123:ALA:O	1:G:131:ASN:ND2	2.51	0.42
1:E:134:THR:CG2	1:E:136:ASN:H	2.32	0.42
1:E:224:GLY:O	1:E:229:LEU:HD12	2.19	0.42
1:G:117:THR:HA	1:G:186:ALA:HA	2.02	0.42
1:G:30:LYS:HA	5:G:299:HOH:O	2.19	0.42
1:C:39:ARG:O	1:C:73:THR:CG2	2.67	0.42
1:A:141:ILE:HB	1:A:174:LEU:HB2	2.02	0.42
1:E:42:MET:HE1	1:E:206:PRO:HG2	2.02	0.42

Continued on next page...

Continued from previous page...

Atom-1	Atom-2	Interatomic distance (Å)	Clash overlap (Å)
1:A:207:ALA:HB1	1:A:208:ASP:HA	2.01	0.42
1:C:89:VAL:HG21	1:C:214:ILE:CG2	2.50	0.42
1:E:30:LYS:HD3	1:E:84:VAL:HG13	2.01	0.42
1:G:57:VAL:HG23	1:G:188:VAL:HG13	2.01	0.42
1:E:107:LEU:HD12	1:E:107:LEU:N	2.35	0.42
1:E:43:GLN:NE2	1:E:70:SER:CA	2.77	0.42
1:C:134:THR:HG22	1:C:135:GLN:N	2.35	0.42
1:C:158:LYS:CE	5:C:389:HOH:O	2.67	0.42
1:A:177:ALA:HB2	1:C:177:ALA:HB2	2.01	0.42
1:C:116:LYS:HE3	1:E:194:THR:HG21	2.02	0.41
1:A:62:THR:HG21	1:G:58:ALA:CB	2.49	0.41
1:A:183:GLU:O	1:A:185:SER:N	2.52	0.41
1:E:51:HIS:O	1:E:63:ALA:HA	2.20	0.41
1:A:7:VAL:HG21	1:A:52:ILE:HG12	2.02	0.41
1:A:16:ASP:OD2	1:A:228:ARG:NH1	2.48	0.41
1:E:105:THR:O	1:E:197:PHE:HA	2.20	0.41
1:A:48:GLY:O	1:A:196:THR:HA	2.20	0.41
1:A:124:ASN:HA	1:C:129:SER:O	2.20	0.41
1:C:51:HIS:O	1:C:63:ALA:HA	2.20	0.41
1:G:35:LYS:HB3	1:G:77:TYR:CE1	2.55	0.41
1:A:56:SER:O	1:A:59:LYS:HG3	2.21	0.41
1:E:13:PRO:HB3	1:E:20:PRO:O	2.20	0.41
1:E:5:VAL:HG13	1:E:29:ILE:HD13	2.03	0.41
1:C:112:THR:O	1:C:191:PHE:HA	2.20	0.41
1:G:64:VAL:HG13	1:G:74:THR:CG2	2.50	0.41
1:G:207:ALA:HB1	1:G:208:ASP:HA	2.03	0.41
1:C:145:ASP:O	1:C:147:THR:HG23	2.21	0.41
1:C:160:SER:N	1:C:164:SER:O	2.46	0.41
4:E:240:ABA:HG2	5:G:319:HOH:O	2.20	0.41
1:C:50:ALA:O	1:C:194:THR:HA	2.21	0.41
1:A:101:LYS:NZ	5:A:357:HOH:O	2.49	0.41
1:E:87:GLU:HB2	1:E:182:TRP:O	2.20	0.41
1:A:8:GLU:OE1	1:A:28:ASP:OD2	2.38	0.41
1:G:112:THR:O	1:G:191:PHE:HA	2.21	0.41
1:A:51:HIS:O	1:A:63:ALA:HA	2.21	0.41
1:E:48:GLY:O	1:E:196:THR:HA	2.20	0.41
1:E:111:PHE:O	1:E:127:HIS:HA	2.21	0.40
1:E:132:GLN:HE22	1:G:117:THR:CB	2.34	0.40
1:A:149:ASP:OD2	5:A:692:HOH:O	2.22	0.40
1:G:101:LYS:HE3	5:G:593:HOH:O	2.21	0.40
1:C:30:LYS:HA	5:C:266:HOH:O	2.21	0.40

Continued on next page...

Continued from previous page...

Atom-1	Atom-2	Interatomic distance (Å)	Clash overlap (Å)
1:A:116:LYS:HB2	1:A:188:VAL:HG23	2.03	0.40
1:G:61:LEU:O	1:G:76:SER:HA	2.22	0.40
1:A:7:VAL:HG22	1:A:27:ILE:CD1	2.51	0.40
1:G:20:PRO:HB2	1:G:22:TYR:CZ	2.55	0.40
1:C:81:LEU:HD12	1:C:81:LEU:HA	1.94	0.40
1:E:7:VAL:HG22	1:E:27:ILE:CD1	2.51	0.40
1:A:45:GLY:HA2	1:A:200:LYS:HG2	2.04	0.40
1:G:200:LYS:CE	5:G:267:HOH:O	2.69	0.40
1:C:194:THR:CG2	5:E:694:HOH:O	2.69	0.40
1:E:207:ALA:HA	1:E:208:ASP:HA	1.81	0.40
1:G:9:LEU:HD12	1:G:9:LEU:N	2.36	0.40

All (10) symmetry-related close contacts are listed below. The label for Atom-2 includes the symmetry operator and encoded unit-cell translations to be applied.

Atom-1	Atom-2	Interatomic distance (Å)	Clash overlap (Å)
5:A:691:HOH:O	5:G:696:HOH:O[2_554]	0.35	1.85
1:A:151:ASP:OD1	5:G:291:HOH:O[2_554]	0.95	1.25
5:E:301:HOH:O	5:G:310:HOH:O[3_645]	1.11	1.09
5:A:692:HOH:O	5:G:345:HOH:O[2_554]	1.13	1.07
1:E:46:LYS:NZ	5:G:344:HOH:O[2_554]	1.41	0.79
1:A:151:ASP:CG	5:G:291:HOH:O[2_554]	1.41	0.79
1:E:204:SER:OG	5:C:631:HOH:O[4_545]	1.94	0.26
5:A:705:HOH:O	5:G:501:HOH:O[2_554]	2.12	0.08
1:G:205:GLU:CD	5:E:301:HOH:O[3_655]	2.12	0.08
1:E:46:LYS:CE	5:G:344:HOH:O[2_554]	2.13	0.07

5.3 Torsion angles [i](#)

5.3.1 Protein backbone [i](#)

In the following table, the Percentiles column shows the percent Ramachandran outliers of the chain as a percentile score with respect to all X-ray entries followed by that with respect to entries of similar resolution.

The Analysed column shows the number of residues for which the backbone conformation was analysed, and the total number of residues.

Mol	Chain	Analysed	Favoured	Allowed	Outliers	Percentiles
1	A	228/237 (96%)	218 (96%)	10 (4%)	0	100 100

Continued on next page...

Continued from previous page...

Mol	Chain	Analysed	Favoured	Allowed	Outliers	Percentiles	
1	C	228/237 (96%)	219 (96%)	9 (4%)	0	100	100
1	E	235/237 (99%)	222 (94%)	12 (5%)	1 (0%)	39	23
1	G	235/237 (99%)	229 (97%)	5 (2%)	1 (0%)	39	23
All	All	926/948 (98%)	888 (96%)	36 (4%)	2 (0%)	52	35

All (2) Ramachandran outliers are listed below:

Mol	Chain	Res	Type
1	G	122	ASP
1	E	69	GLY

5.3.2 Protein sidechains ⓘ

In the following table, the Percentiles column shows the percent sidechain outliers of the chain as a percentile score with respect to all X-ray entries followed by that with respect to entries of similar resolution.

The Analysed column shows the number of residues for which the sidechain conformation was analysed, and the total number of residues.

Mol	Chain	Analysed	Rotameric	Outliers	Percentiles	
1	A	198/202 (98%)	191 (96%)	7 (4%)	43	25
1	C	198/202 (98%)	182 (92%)	16 (8%)	15	4
1	E	202/202 (100%)	189 (94%)	13 (6%)	22	7
1	G	202/202 (100%)	185 (92%)	17 (8%)	14	4
All	All	800/808 (99%)	747 (93%)	53 (7%)	21	7

All (53) residues with a non-rotameric sidechain are listed below:

Mol	Chain	Res	Type
1	A	41	ASN
1	A	101	LYS
1	A	134	THR
1	A	158	LYS
1	A	174	LEU
1	A	198	LEU
1	A	232	LEU
1	C	11	SER
1	C	81	LEU

Continued on next page...

Continued from previous page...

Mol	Chain	Res	Type
1	C	87	GLU
1	C	99	LEU
1	C	101	LYS
1	C	116	LYS
1	C	117	THR
1	C	158	LYS
1	C	162	SER
1	C	164	SER
1	C	194	THR
1	C	198	LEU
1	C	208	ASP
1	C	210	ILE
1	C	230	LEU
1	C	232	LEU
1	E	44	THR
1	E	73	THR
1	E	99	LEU
1	E	117	THR
1	E	134	THR
1	E	135	GLN
1	E	161	SER
1	E	174	LEU
1	E	192	ASP
1	E	198	LEU
1	E	202	PRO
1	E	210	ILE
1	E	232	LEU
1	G	22	TYR
1	G	36	SER
1	G	42	MET
1	G	81	LEU
1	G	87	GLU
1	G	101	LYS
1	G	115	LEU
1	G	117	THR
1	G	122	ASP
1	G	136	ASN
1	G	158	LYS
1	G	176	TYR
1	G	194	THR
1	G	210	ILE
1	G	226	SER

Continued on next page...

Continued from previous page...

Mol	Chain	Res	Type
1	G	230	LEU
1	G	232	LEU

Some sidechains can be flipped to improve hydrogen bonding and reduce clashes. All (18) such sidechains are listed below:

Mol	Chain	Res	Type
1	A	41	ASN
1	A	83	ASN
1	C	41	ASN
1	C	43	GLN
1	C	51	HIS
1	C	131	ASN
1	C	135	GLN
1	C	136	ASN
1	E	43	GLN
1	E	83	ASN
1	E	104	ASN
1	E	118	ASN
1	E	132	GLN
1	E	135	GLN
1	E	166	GLN
1	G	51	HIS
1	G	131	ASN
1	G	136	ASN

5.3.3 RNA ⓘ

There are no RNA molecules in this entry.

5.4 Non-standard residues in protein, DNA, RNA chains ⓘ

There are no non-standard protein/DNA/RNA residues in this entry.

5.5 Carbohydrates ⓘ

There are no carbohydrates in this entry.

5.6 Ligand geometry

Of 10 ligands modelled in this entry, 8 are monoatomic - leaving 2 for Mogul analysis.

In the following table, the Counts columns list the number of bonds (or angles) for which Mogul statistics could be retrieved, the number of bonds (or angles) that are observed in the model and the number of bonds (or angles) that are defined in the chemical component dictionary. The Link column lists molecule types, if any, to which the group is linked. The Z score for a bond length (or angle) is the number of standard deviations the observed value is removed from the expected value. A bond length (or angle) with $|Z| > 2$ is considered an outlier worth inspection. RMSZ is the root-mean-square of all Z scores of the bond lengths (or angles).

Mol	Type	Chain	Res	Link	Bond lengths			Bond angles		
					Counts	RMSZ	$\# Z > 2$	Counts	RMSZ	$\# Z > 2$
4	ABA	E	240	-	4,5,6	0.63	0	3,5,7	1.05	0
4	ABA	G	240	-	4,5,6	0.93	0	3,5,7	1.67	1 (33%)

In the following table, the Chirals column lists the number of chiral outliers, the number of chiral centers analysed, the number of these observed in the model and the number defined in the chemical component dictionary. Similar counts are reported in the Torsion and Rings columns. '-' means no outliers of that kind were identified.

Mol	Type	Chain	Res	Link	Chirals	Torsions	Rings
4	ABA	E	240	-	-	0/2/4/6	0/0/0/0
4	ABA	G	240	-	-	0/2/4/6	0/0/0/0

There are no bond length outliers.

All (1) bond angle outliers are listed below:

Mol	Chain	Res	Type	Atoms	Z	Observed($^{\circ}$)	Ideal($^{\circ}$)
4	G	240	ABA	O-C-CA	-2.80	118.19	125.49

There are no chirality outliers.

There are no torsion outliers.

There are no ring outliers.

2 monomers are involved in 12 short contacts:

Mol	Chain	Res	Type	Clashes	Symm-Clashes
4	E	240	ABA	10	0
4	G	240	ABA	2	0

5.7 Other polymers

There are no such residues in this entry.

5.8 Polymer linkage issues

There are no chain breaks in this entry.

6 Fit of model and data ⓘ

6.1 Protein, DNA and RNA chains ⓘ

In the following table, the column labelled ‘#RSRZ> 2’ contains the number (and percentage) of RSRZ outliers, followed by percent RSRZ outliers for the chain as percentile scores relative to all X-ray entries and entries of similar resolution. The OWAB column contains the minimum, median, 95th percentile and maximum values of the occupancy-weighted average B-factor per residue. The column labelled ‘Q< 0.9’ lists the number of (and percentage) of residues with an average occupancy less than 0.9.

Mol	Chain	Analysed	<RSRZ>	#RSRZ>2			OWAB(Å ²)	Q<0.9
1	A	232/237 (97%)	0.03	6 (2%)	59	54	6, 12, 25, 40	6 (2%)
1	C	232/237 (97%)	0.24	14 (6%)	25	20	8, 14, 28, 36	4 (1%)
1	E	237/237 (100%)	0.08	10 (4%)	40	34	6, 12, 29, 40	6 (2%)
1	G	237/237 (100%)	0.11	14 (5%)	26	21	6, 11, 25, 45	4 (1%)
All	All	938/948 (98%)	0.12	44 (4%)	35	29	6, 12, 27, 45	20 (2%)

All (44) RSRZ outliers are listed below:

Mol	Chain	Res	Type	RSRZ
1	E	71	SER	11.3
1	G	119	SER	6.9
1	C	163	GLY	6.3
1	E	70	SER	4.9
1	G	121	ALA	4.5
1	G	123	ALA	4.5
1	A	184	SER	4.3
1	G	120	ILE	4.3
1	C	161	SER	4.3
1	A	123	ALA	3.8
1	C	150	SER	3.7
1	E	122	ASP	3.6
1	C	162	SER	3.5
1	C	151	ASP	3.3
1	G	69	GLY	3.1
1	C	16	ASP	3.1
1	E	120	ILE	3.0
1	C	99	LEU	3.0
1	C	202	PRO	2.9
1	E	182	TRP	2.9
1	A	182	TRP	2.8

Continued on next page...

Continued from previous page...

Mol	Chain	Res	Type	RSRZ
1	A	161	SER	2.7
1	C	160	SER	2.7
1	G	136	ASN	2.7
1	G	122	ASP	2.6
1	A	136	ASN	2.6
1	C	83	ASN	2.6
1	G	118	ASN	2.5
1	C	134	THR	2.5
1	G	135	GLN	2.5
1	E	119	SER	2.4
1	C	69	GLY	2.4
1	C	117	THR	2.4
1	E	124	ASN	2.3
1	C	226	SER	2.2
1	G	71	SER	2.2
1	G	42	MET	2.2
1	E	16	ASP	2.2
1	E	68	SER	2.2
1	G	184	SER	2.2
1	A	194	THR	2.2
1	G	210	ILE	2.1
1	E	161	SER	2.1
1	G	150	SER	2.0

6.2 Non-standard residues in protein, DNA, RNA chains [i](#)

There are no non-standard protein/DNA/RNA residues in this entry.

6.3 Carbohydrates [i](#)

There are no carbohydrates in this entry.

6.4 Ligands [i](#)

In the following table, the Atoms column lists the number of modelled atoms in the group and the number defined in the chemical component dictionary. LLDF column lists the quality of electron density of the group with respect to its neighbouring residues in protein, DNA or RNA chains. The B-factors column lists the minimum, median, 95th percentile and maximum values of B factors of atoms in the group. The column labelled 'Q< 0.9' lists the number of atoms with occupancy less than 0.9.

Mol	Type	Chain	Res	Atoms	RSCC	RSR	LLDF	B-factors(\AA^2)	Q<0.9
4	ABA	E	240	6/7	0.67	0.27	3.46	14,20,22,23	0
4	ABA	G	240	6/7	0.92	0.15	2.10	6,15,19,24	0
3	CA	G	239	1/1	0.99	0.08	-0.42	10,10,10,10	0
3	CA	A	239	1/1	1.00	0.05	-2.39	10,10,10,10	0
2	MN	A	238	1/1	1.00	0.05	-2.63	11,11,11,11	0
3	CA	C	239	1/1	1.00	0.06	-2.64	15,15,15,15	0
3	CA	E	239	1/1	1.00	0.06	-3.49	13,13,13,13	0
2	MN	G	238	1/1	1.00	0.04	-4.67	10,10,10,10	0
2	MN	C	238	1/1	0.99	0.03	-4.94	14,14,14,14	0
2	MN	E	238	1/1	1.00	0.03	-5.39	11,11,11,11	0

6.5 Other polymers [i](#)

There are no such residues in this entry.