



Full wwPDB X-ray Structure Validation Report ⓘ

Feb 1, 2016 – 02:39 PM GMT

PDB ID : 4A0S
Title : STRUCTURE OF THE 2-OCTENOYL-COA CARBOXYLASE REDUCTASE CINF IN COMPLEX WITH NADP AND 2-OCTENOYL-COA
Authors : Quade, N.; Huo, L.; Rachid, S.; Heinz, D.W.; Muller, R.
Deposited on : 2011-09-12
Resolution : 1.90 Å(reported)

This is a Full wwPDB X-ray Structure Validation Report for a publicly released PDB entry.
We welcome your comments at validation@mail.wwpdb.org
A user guide is available at
<http://wwpdb.org/validation/2016/XrayValidationReportHelp>
with specific help available everywhere you see the ⓘ symbol.

The following versions of software and data (see [references ⓘ](#)) were used in the production of this report:

MolProbity : 4.02b-467
Mogul : 1.7 (RC4), CSD as536be (2015)
Xtriage (Phenix) : 1.9-1692
EDS : rb-20026688
Percentile statistics : 20151230.v01 (using entries in the PDB archive December 30th 2015)
Refmac : 5.8.0135
CCP4 : 6.5.0
Ideal geometry (proteins) : Engh & Huber (2001)
Ideal geometry (DNA, RNA) : Parkinson et al. (1996)
Validation Pipeline (wwPDB-VP) : trunk26865

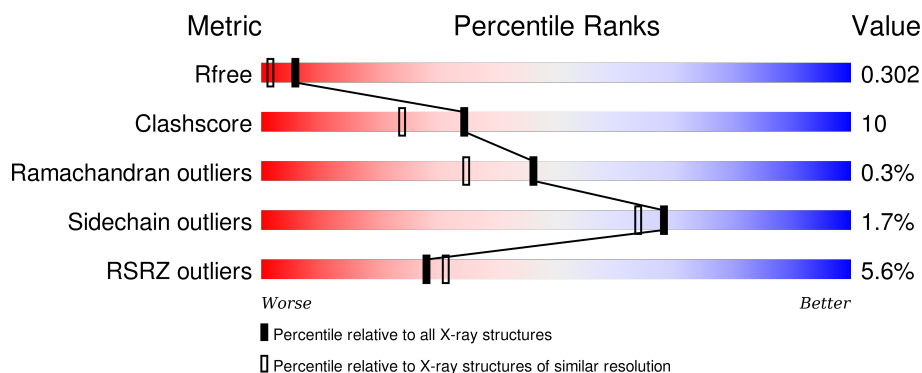
1 Overall quality at a glance

The following experimental techniques were used to determine the structure:

X-RAY DIFFRACTION

The reported resolution of this entry is 1.90 Å.

Percentile scores (ranging between 0-100) for global validation metrics of the entry are shown in the following graphic. The table shows the number of entries on which the scores are based.



Metric	Whole archive (#Entries)	Similar resolution (#Entries, resolution range(Å))
R_{free}	91344	4755 (1.90-1.90)
Clashscore	102246	5398 (1.90-1.90)
Ramachandran outliers	100387	5338 (1.90-1.90)
Sidechain outliers	100360	5339 (1.90-1.90)
RSRZ outliers	91569	4766 (1.90-1.90)

The table below summarises the geometric issues observed across the polymeric chains and their fit to the electron density. The red, orange, yellow and green segments on the lower bar indicate the fraction of residues that contain outliers for ≥ 3 , 2, 1 and 0 types of geometric quality criteria. A grey segment represents the fraction of residues that are not modelled. The numeric value for each fraction is indicated below the corresponding segment, with a dot representing fractions $\leq 5\%$. The upper red bar (where present) indicates the fraction of residues that have poor fit to the electron density. The numeric value is given above the bar.

Mol	Chain	Length	Quality of chain
1	A	447	<div> <div>5%</div> <div>82% 17%</div> </div>
1	B	447	<div> <div>6%</div> <div>82% 17%</div> </div>
1	C	447	<div> <div>4%</div> <div>77% 21% ..</div> </div>
1	D	447	<div> <div>8%</div> <div>77% 21% ..</div> </div>

The following table lists non-polymeric compounds, carbohydrate monomers and non-standard

residues in protein, DNA, RNA chains that are outliers for geometric or electron-density-fit criteria:

Mol	Type	Chain	Res	Chirality	Geometry	Clashes	Electron density
2	CO8	A	1446	-	-	-	X
2	CO8	B	1447	-	-	-	X
2	CO8	C	1446	-	-	-	X
2	CO8	D	1446	-	-	-	X

2 Entry composition [i](#)

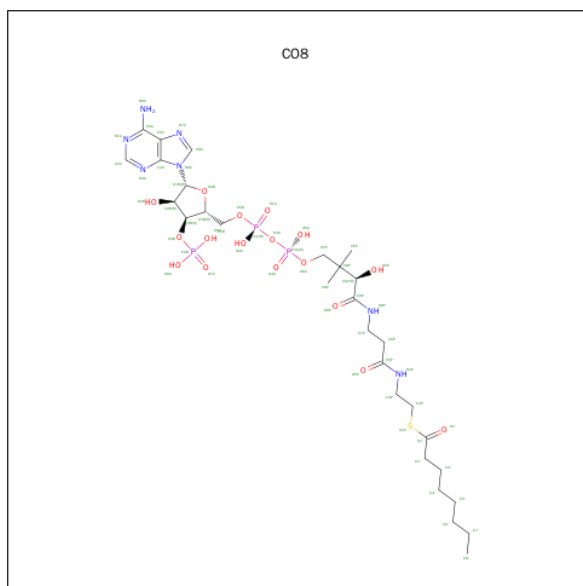
There are 4 unique types of molecules in this entry. The entry contains 15766 atoms, of which 0 are hydrogens and 0 are deuteriums.

In the tables below, the ZeroOcc column contains the number of atoms modelled with zero occupancy, the AltConf column contains the number of residues with at least one atom in alternate conformation and the Trace column contains the number of residues modelled with at most 2 atoms.

- Molecule 1 is a protein called OCTENOYL-COA REDUCTASE/CARBOXYLASE.

Mol	Chain	Residues	Atoms					ZeroOcc	AltConf	Trace
1	A	445	Total	C	N	O	S	0	3	0
			3375	2115	613	631	16			
1	B	445	Total	C	N	O	S	0	2	0
			3371	2112	615	628	16			
1	C	444	Total	C	N	O	S	0	2	0
			3360	2106	609	629	16			
1	D	444	Total	C	N	O	S	0	0	0
			3348	2098	608	626	16			

- Molecule 2 is OCTANOYL-COENZYME A (three-letter code: CO8) (formula: $C_{29}H_{50}N_7O_{17}P_3S$).



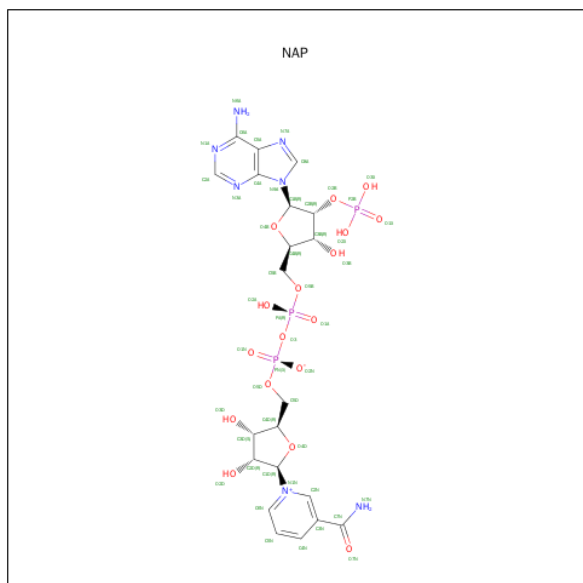
Mol	Chain	Residues	Atoms						ZeroOcc	AltConf
2	A	1	Total	C	N	O	P	S	0	0
			57	29	7	17	3	1		
2	B	1	Total	C	N	O	P	S	0	0
			57	29	7	17	3	1		

Continued on next page...

Continued from previous page...

Mol	Chain	Residues	Atoms						ZeroOcc	AltConf
2	C	1	Total	C	N	O	P	S	0	0
			57	29	7	17	3	1		
2	D	1	Total	C	N	O	P	S	0	0
			57	29	7	17	3	1		

- Molecule 3 is NADP NICOTINAMIDE-ADENINE-DINUCLEOTIDE PHOSPHATE (three-letter code: NAP) (formula: $C_{21}H_{28}N_7O_{17}P_3$).



Mol	Chain	Residues	Atoms					ZeroOcc	AltConf
3	A	1	Total	C	N	O	P	0	0
			48	21	7	17	3		
3	B	1	Total	C	N	O	P	0	0
			48	21	7	17	3		
3	C	1	Total	C	N	O	P	0	0
			48	21	7	17	3		
3	D	1	Total	C	N	O	P	0	0
			48	21	7	17	3		

- Molecule 4 is water.

Mol	Chain	Residues	Atoms		ZeroOcc	AltConf
4	A	522	Total	O	0	0
			522	522		
4	B	482	Total	O	0	0
			482	482		
4	C	457	Total	O	0	0
			457	457		

Continued on next page...

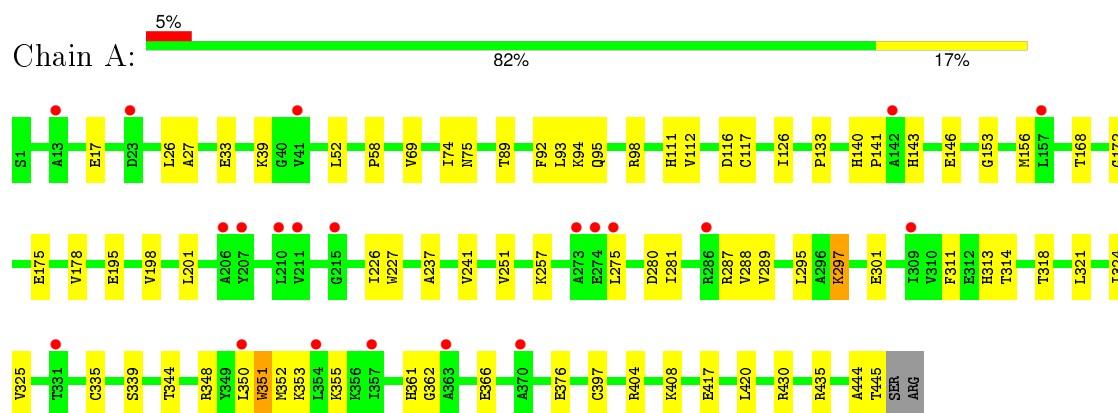
Continued from previous page...

Mol	Chain	Residues	Atoms		ZeroOcc	AltConf
4	D	431	Total	O	0	0
			431	431		

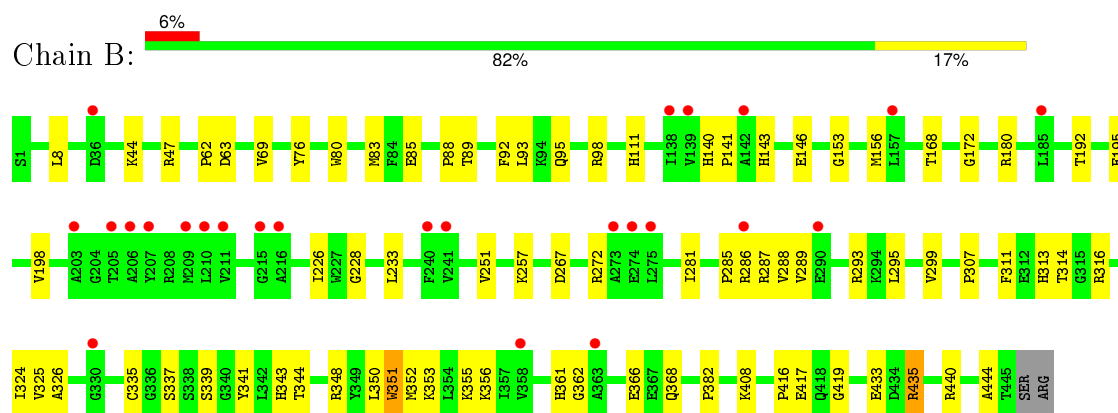
3 Residue-property plots

These plots are drawn for all protein, RNA and DNA chains in the entry. The first graphic for a chain summarises the proportions of errors displayed in the second graphic. The second graphic shows the sequence view annotated by issues in geometry and electron density. Residues are color-coded according to the number of geometric quality criteria for which they contain at least one outlier: green = 0, yellow = 1, orange = 2 and red = 3 or more. A red dot above a residue indicates a poor fit to the electron density ($RSRZ > 2$). Stretches of 2 or more consecutive residues without any outlier are shown as a green connector. Residues present in the sample, but not in the model, are shown in grey.

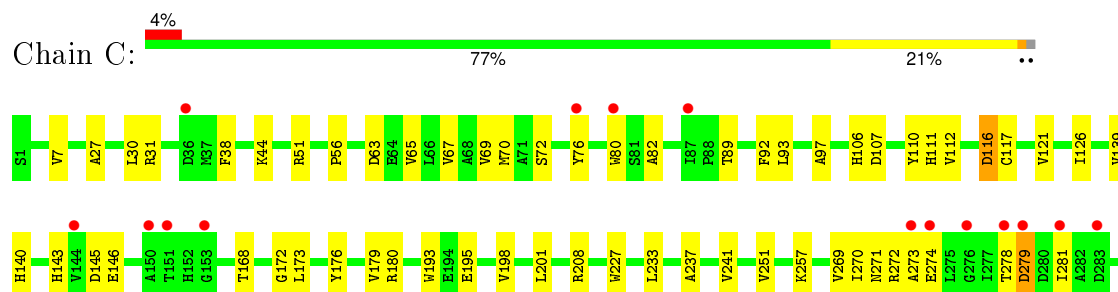
• Molecule 1: OCTENOYL-COA REDUCTASE/CARBOXYLASE

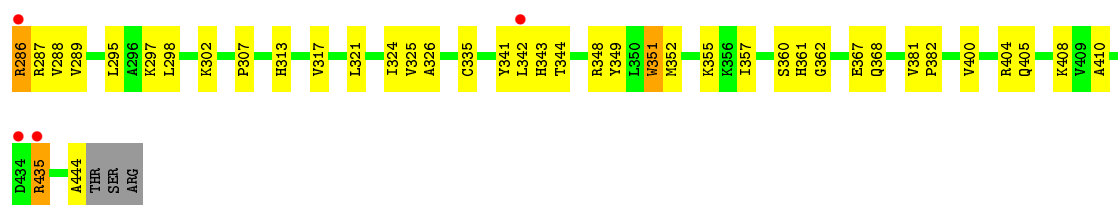


• Molecule 1: OCTENOYL-COA REDUCTASE/CARBOXYLASE

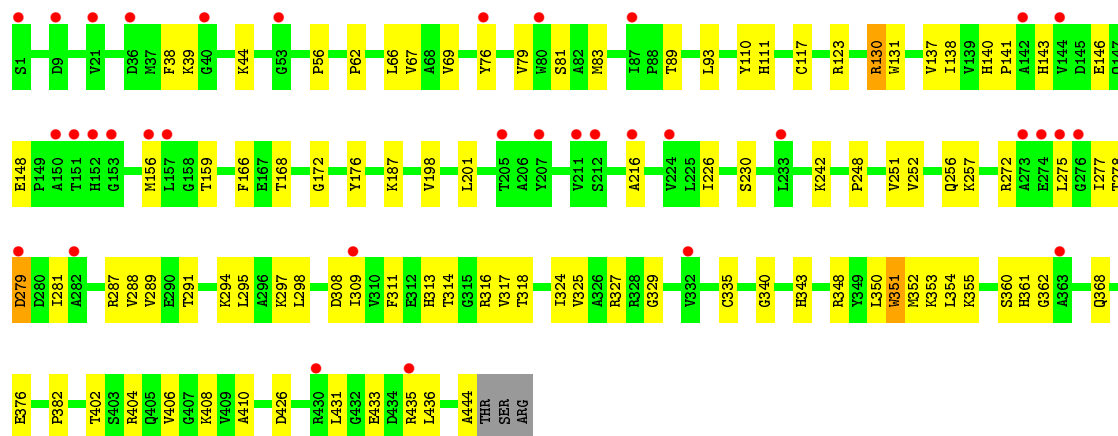
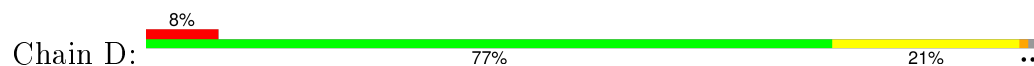


• Molecule 1: OCTENOYL-COA REDUCTASE/CARBOXYLASE





• Molecule 1: OCTENOYL-COA REDUCTASE/CARBOXYLASE



4 Data and refinement statistics

Property	Value	Source
Space group	P 1 21 1	Depositor
Cell constants a, b, c, α , β , γ	96.01Å 83.30Å 122.74Å 90.00° 110.96° 90.00°	Depositor
Resolution (Å)	47.21 – 1.90 47.21 – 1.90	Depositor EDS
% Data completeness (in resolution range)	100.0 (47.21-1.90) 98.9 (47.21-1.90)	Depositor EDS
R_{merge}	0.01	Depositor
R_{sym}	(Not available)	Depositor
$\langle I/\sigma(I) \rangle$ ¹	2.47 (at 1.90Å)	Xtriage
Refinement program	REFMAC 5.5.0109	Depositor
R, R_{free}	0.199 , 0.250 0.256 , 0.302	Depositor DCC
R_{free} test set	7037 reflections (5.26%)	DCC
Wilson B-factor (Å ²)	17.3	Xtriage
Anisotropy	0.077	Xtriage
Bulk solvent k_{sol} (e/Å ³), B_{sol} (Å ²)	0.37 , 15.8	EDS
Estimated twinning fraction	0.018 for h,-k,-h-l	Xtriage
L-test for twinning ²	$\langle L \rangle = 0.49$, $\langle L^2 \rangle = 0.32$	Xtriage
Outliers	1 of 140723 reflections (0.001%)	Xtriage
F_o, F_c correlation	0.91	EDS
Total number of atoms	15766	wwPDB-VP
Average B, all atoms (Å ²)	21.0	wwPDB-VP

Xtriage's analysis on translational NCS is as follows: *The largest off-origin peak in the Patterson function is 9.55% of the height of the origin peak. No significant pseudotranslation is detected.*

¹Intensities estimated from amplitudes.

²Theoretical values of $\langle |L| \rangle$, $\langle L^2 \rangle$ for acentric reflections are 0.5, 0.375 respectively for untwinned datasets, and 0.333, 0.2 for perfectly twinned datasets.

5 Model quality

5.1 Standard geometry

Bond lengths and bond angles in the following residue types are not validated in this section: CO8, NAP

The Z score for a bond length (or angle) is the number of standard deviations the observed value is removed from the expected value. A bond length (or angle) with $|Z| > 5$ is considered an outlier worth inspection. RMSZ is the root-mean-square of all Z scores of the bond lengths (or angles).

Mol	Chain	Bond lengths		Bond angles	
		RMSZ	# Z >5	RMSZ	# Z >5
1	A	0.53	0/3452	0.66	0/4687
1	B	0.54	0/3445	0.67	0/4677
1	C	0.52	0/3434	0.67	0/4663
1	D	0.51	0/3416	0.68	3/4639 (0.1%)
All	All	0.53	0/13747	0.67	3/18666 (0.0%)

There are no bond length outliers.

All (3) bond angle outliers are listed below:

Mol	Chain	Res	Type	Atoms	Z	Observed(°)	Ideal(°)
1	D	130	ARG	NE-CZ-NH2	-7.14	116.73	120.30
1	D	275	LEU	CA-CB-CG	5.06	126.93	115.30
1	D	130	ARG	NE-CZ-NH1	5.01	122.81	120.30

There are no chirality outliers.

There are no planarity outliers.

5.2 Too-close contacts

In the following table, the Non-H and H(model) columns list the number of non-hydrogen atoms and hydrogen atoms in the chain respectively. The H(added) column lists the number of hydrogen atoms added and optimized by MolProbity. The Clashes column lists the number of clashes within the asymmetric unit, whereas Symm-Clashes lists symmetry related clashes.

Mol	Chain	Non-H	H(model)	H(added)	Clashes	Symm-Clashes
1	A	3375	0	3369	59	0
1	B	3371	0	3368	70	0
1	C	3360	0	3349	80	0
1	D	3348	0	3335	74	0

Continued on next page...

Continued from previous page...

Mol	Chain	Non-H	H(model)	H(added)	Clashes	Symm-Clashes
2	A	57	0	46	2	0
2	B	57	0	46	4	0
2	C	57	0	46	5	0
2	D	57	0	46	5	0
3	A	48	0	25	7	0
3	B	48	0	25	9	0
3	C	48	0	25	6	0
3	D	48	0	25	5	0
4	A	522	0	0	6	0
4	B	482	0	0	8	0
4	C	457	0	0	6	0
4	D	431	0	0	9	0
All	All	15766	0	13705	276	0

The all-atom clashscore is defined as the number of clashes found per 1000 atoms (including hydrogen atoms). The all-atom clashscore for this structure is 10.

All (276) close contacts within the same asymmetric unit are listed below, sorted by their clash magnitude.

Atom-1	Atom-2	Interatomic distance (Å)	Clash overlap (Å)
1:D:79:VAL:HG12	1:D:83:MET:HE2	1.28	1.07
1:D:79:VAL:HG12	1:D:83:MET:CE	1.91	0.99
1:B:228:GLY:H	1:B:272[B]:ARG:HH22	1.11	0.97
1:C:362:GLY:H	3:C:1445:NAP:H72N	1.13	0.94
1:D:362:GLY:H	3:D:1445:NAP:H72N	1.06	0.94
1:A:362:GLY:H	3:A:1447:NAP:H72N	1.03	0.93
1:B:362:GLY:H	3:B:1446:NAP:H72N	0.89	0.88
1:B:362:GLY:N	3:B:1446:NAP:H72N	1.71	0.87
1:C:145:ASP:OD2	1:D:130:ARG:NH2	2.09	0.85
1:B:295:LEU:HD23	1:B:325:VAL:HG11	1.57	0.84
1:B:267:ASP:HB3	4:B:2307:HOH:O	1.77	0.84
1:C:233:LEU:HD21	1:C:335:CYS:SG	2.22	0.79
4:A:2380:HOH:O	2:D:1446:CO8:O4A	2.01	0.77
1:D:362:GLY:N	3:D:1445:NAP:H72N	1.83	0.76
1:D:281:ILE:HG13	1:D:287:ARG:HG2	1.66	0.76
1:C:297:LYS:HD3	4:C:2321:HOH:O	1.86	0.74
1:A:275:LEU:HD11	1:A:295:LEU:HD13	1.74	0.69
1:A:17:GLU:HG2	1:A:133:PRO:HG2	1.72	0.69
1:C:362:GLY:N	3:C:1445:NAP:H72N	1.89	0.67
1:C:63:ASP:OD2	4:C:2120:HOH:O	2.12	0.67
1:D:148:GLU:OE2	1:D:159:THR:HB	1.95	0.67

Continued on next page...

Continued from previous page...

Atom-1	Atom-2	Interatomic distance (Å)	Clash overlap (Å)
1:C:295:LEU:HD23	1:C:325:VAL:HG11	1.75	0.67
1:D:376:GLU:OE1	4:D:2347:HOH:O	2.14	0.66
1:B:286:ARG:HH12	1:B:293[A]:ARG:NH2	1.94	0.65
1:A:362:GLY:N	3:A:1447:NAP:H72N	1.87	0.65
1:B:417:GLU:OE2	4:B:2438:HOH:O	2.14	0.65
1:A:376:GLU:OE2	4:A:2276:HOH:O	2.14	0.65
2:B:1447:CO8:O7A	1:C:286:ARG:NH2	2.29	0.63
1:B:286:ARG:HH12	1:B:293[A]:ARG:HH22	1.46	0.63
1:A:280:ASP:OD1	1:A:287[A]:ARG:NH2	2.32	0.63
1:C:278:THR:O	1:C:281:ILE:HG22	1.98	0.63
1:B:80:TRP:CE3	1:B:83:MET:CE	2.83	0.62
1:B:95:GLN:HG2	1:B:98:ARG:HH12	1.64	0.62
1:D:79:VAL:CG1	1:D:83:MET:CE	2.73	0.62
1:D:256:GLN:HG2	4:D:2262:HOH:O	1.98	0.62
1:D:278:THR:O	1:D:281:ILE:HG22	2.00	0.61
1:D:279:ASP:HA	1:D:317:VAL:HG12	1.82	0.61
1:A:289:VAL:HA	1:A:324:ILE:HD13	1.82	0.61
1:B:281:ILE:HG13	1:B:287:ARG:HG2	1.81	0.61
1:B:80:TRP:CE3	1:B:83:MET:HE3	2.36	0.61
1:C:289:VAL:HA	1:C:324:ILE:HD13	1.84	0.60
1:B:348:ARG:O	1:B:352:MET:HB2	2.01	0.60
1:B:80:TRP:HE3	1:B:83:MET:HE3	1.68	0.59
2:B:1447:CO8:P3B	1:C:286:ARG:HH22	2.26	0.59
1:D:317:VAL:HG23	1:D:318:THR:HG23	1.84	0.58
1:B:63:ASP:OD2	4:B:2102:HOH:O	2.16	0.58
1:B:295:LEU:CD2	1:B:325:VAL:HG11	2.30	0.57
1:B:435:ARG:NH1	4:B:2467:HOH:O	2.37	0.57
1:B:335:CYS:O	3:B:1446:NAP:H2N	2.04	0.57
1:B:228:GLY:H	1:B:272[B]:ARG:NH2	1.93	0.57
1:A:95:GLN:HG2	1:A:98:ARG:NH1	2.20	0.56
1:A:335:CYS:O	3:A:1447:NAP:H2N	2.06	0.56
3:B:1446:NAP:C7N	2:B:1447:CO8:H2'1	2.36	0.55
1:D:335:CYS:O	3:D:1445:NAP:H2N	2.07	0.55
1:D:295:LEU:HG	1:D:325:VAL:HG11	1.89	0.55
1:C:335:CYS:O	3:C:1445:NAP:H2N	2.07	0.55
3:B:1446:NAP:H8A	3:B:1446:NAP:H3B	1.89	0.54
1:A:417:GLU:HG2	1:A:420:LEU:HD11	1.90	0.54
1:C:404:ARG:NH2	4:C:2092:HOH:O	2.40	0.54
1:C:198:VAL:O	1:C:408:LYS:HE2	2.07	0.54
1:D:348:ARG:O	1:D:352:MET:HB2	2.08	0.54
1:D:297:LYS:NZ	4:D:2297:HOH:O	2.21	0.54

Continued on next page...

Continued from previous page...

Atom-1	Atom-2	Interatomic distance (Å)	Clash overlap (Å)
1:D:201:LEU:HD11	2:D:1446:CO8:H4'1	1.89	0.54
1:A:95:GLN:HG2	1:A:98:ARG:HH12	1.74	0.53
1:C:56:PRO:HD2	1:C:110:TYR:CZ	2.43	0.53
1:C:307:PRO:HD2	1:C:325:VAL:O	2.08	0.53
1:D:81:SER:HB2	1:D:89:THR:HG21	1.90	0.53
1:C:348:ARG:O	1:C:352:MET:HB2	2.08	0.53
1:A:146[B]:GLU:HB2	1:B:146:GLU:HB3	1.91	0.53
1:D:198:VAL:O	1:D:408:LYS:HE2	2.09	0.53
1:A:348:ARG:O	1:A:352:MET:HB2	2.09	0.52
1:C:227:TRP:CZ3	1:C:251:VAL:HG11	2.44	0.52
1:D:433:GLU:HG2	4:D:2398:HOH:O	2.10	0.52
1:B:140:HIS:CG	1:B:368:GLN:HG3	2.45	0.52
1:C:279:ASP:HA	1:C:317:VAL:HG22	1.90	0.52
1:D:166:PHE:CE2	2:D:1446:CO8:H32	2.45	0.52
1:D:308:ASP:HA	1:D:327:ARG:HG2	1.92	0.51
1:B:433:GLU:HG2	1:B:440:ARG:HH22	1.75	0.51
1:B:287:ARG:HD2	4:B:2329:HOH:O	2.10	0.51
1:C:198:VAL:CG1	1:C:410:ALA:HB2	2.40	0.51
1:C:341:TYR:CD1	1:C:342:LEU:HD12	2.46	0.51
1:B:228:GLY:N	1:B:272[B]:ARG:HH22	1.93	0.51
1:C:69:VAL:HG13	1:C:117:CYS:HB2	1.93	0.51
1:C:295:LEU:CD2	1:C:325:VAL:HG11	2.41	0.51
1:A:227:TRP:CZ3	1:A:251:VAL:HG11	2.45	0.51
1:B:289:VAL:HA	1:B:324:ILE:HD13	1.93	0.50
1:B:95:GLN:HG2	1:B:98:ARG:NH1	2.27	0.50
1:C:271:ASN:O	1:C:274:GLU:HB2	2.11	0.50
1:C:69:VAL:HG11	1:C:172:GLY:O	2.11	0.50
1:A:351:TRP:O	1:D:361:HIS:HB2	2.11	0.50
1:C:271:ASN:O	1:C:274:GLU:CB	2.60	0.50
1:B:433:GLU:HG2	1:B:440:ARG:NH2	2.27	0.50
1:D:289:VAL:HA	1:D:324:ILE:HD13	1.92	0.50
1:D:66:LEU:HB3	1:D:123:ARG:HB2	1.94	0.50
1:C:146:GLU:HB3	1:D:146:GLU:HB3	1.92	0.50
1:A:201:LEU:HD11	2:A:1446:CO8:H4'1	1.93	0.49
1:A:93:LEU:HD11	1:A:111:HIS:CG	2.47	0.49
1:D:56:PRO:HD2	1:D:110:TYR:CZ	2.46	0.49
1:C:76:TYR:CE1	1:C:80:TRP:NE1	2.80	0.49
1:A:297:LYS:O	1:A:301:GLU:HG3	2.12	0.49
1:D:295:LEU:CG	1:D:325:VAL:HG11	2.42	0.49
1:B:180:ARG:HD3	4:B:2102:HOH:O	2.12	0.49
1:D:38:PHE:HB3	1:D:44:LYS:HG2	1.94	0.49

Continued on next page...

Continued from previous page...

Atom-1	Atom-2	Interatomic distance (Å)	Clash overlap (Å)
1:D:426:ASP:HB2	4:D:2388:HOH:O	2.12	0.49
1:C:97:ALA:CB	1:C:107:ASP:HB2	2.42	0.49
1:D:81:SER:HB2	1:D:89:THR:CG2	2.41	0.49
1:A:140:HIS:HB2	1:A:141:PRO:HD2	1.94	0.48
1:C:38:PHE:HB3	1:C:44:LYS:HG2	1.95	0.48
1:B:251:VAL:HG12	1:B:272[A]:ARG:HG3	1.94	0.48
1:A:143:HIS:CG	1:A:168:THR:HG21	2.48	0.48
1:A:146[A]:GLU:HB3	1:B:146:GLU:HG2	1.96	0.48
1:D:431:LEU:HD23	1:D:436:LEU:HD21	1.95	0.48
1:C:281:ILE:HG13	1:C:287:ARG:HG2	1.94	0.48
1:B:140:HIS:HB2	1:B:141:PRO:HD2	1.94	0.48
1:C:31:ARG:HG2	1:C:51:ARG:HD2	1.96	0.48
1:C:251:VAL:HG12	1:C:272:ARG:HG2	1.95	0.48
1:C:195:GLU:HB3	1:C:382:PRO:HG2	1.96	0.48
1:C:65:VAL:HG13	1:C:121:VAL:HG13	1.95	0.48
1:A:344:THR:HA	1:D:343:HIS:O	2.14	0.47
1:D:69:VAL:HG11	1:D:172:GLY:O	2.13	0.47
1:B:289:VAL:O	1:B:293[A]:ARG:HG3	2.13	0.47
1:C:287:ARG:HG3	4:C:2317:HOH:O	2.13	0.47
1:D:251:VAL:HG12	1:D:272:ARG:CG	2.44	0.47
1:A:69:VAL:HG13	1:A:117:CYS:HB2	1.96	0.47
1:D:143:HIS:CG	1:D:168:THR:HG21	2.49	0.47
1:D:79:VAL:CG1	1:D:83:MET:HE1	2.45	0.47
1:A:33:GLU:HG2	4:A:2047:HOH:O	2.15	0.47
1:A:74:ILE:HG21	1:A:397:CYS:HA	1.95	0.47
1:B:339:SER:HB3	3:B:1446:NAP:H2A	1.96	0.47
1:A:350:LEU:HD12	1:A:355:LYS:HB2	1.95	0.47
1:D:350:LEU:HD12	1:D:355:LYS:HB2	1.96	0.47
1:B:337:SER:HB3	1:B:341:TYR:HA	1.97	0.46
1:C:288:VAL:HG12	1:C:324:ILE:HD12	1.97	0.46
1:D:329:GLY:HA2	1:D:354:LEU:O	2.14	0.46
3:A:1447:NAP:H8A	3:A:1447:NAP:H3B	1.98	0.46
1:B:288:VAL:HG12	1:B:324:ILE:CD1	2.46	0.46
1:C:198:VAL:HB	1:C:408:LYS:CB	2.46	0.46
1:B:69:VAL:HG11	1:B:172:GLY:O	2.15	0.46
1:A:404:ARG:NH1	1:A:445:THR:HG21	2.30	0.46
1:B:156:MET:HE2	1:B:361:HIS:O	2.15	0.46
1:C:321:LEU:O	1:C:325:VAL:HG13	2.16	0.46
1:A:94:LYS:HE2	4:A:2059:HOH:O	2.15	0.46
1:A:75:ASN:OD1	1:A:201:LEU:HD22	2.15	0.46
1:B:8:LEU:HD22	1:B:416:PRO:HD3	1.97	0.46

Continued on next page...

Continued from previous page...

Atom-1	Atom-2	Interatomic distance (Å)	Clash overlap (Å)
3:C:1445:NAP:H52N	3:C:1445:NAP:H52A	1.97	0.46
1:B:353:LYS:NZ	2:C:1446:CO8:H121	2.31	0.46
1:B:198:VAL:O	1:B:408:LYS:HE2	2.15	0.46
1:A:295:LEU:HG	1:A:325:VAL:HG21	1.97	0.45
1:A:288:VAL:HG12	1:A:324:ILE:HD12	1.97	0.45
1:B:285:PRO:CG	1:C:342:LEU:HD21	2.46	0.45
1:D:156:MET:HE2	1:D:361:HIS:O	2.16	0.45
1:C:30:LEU:HD21	1:C:82:ALA:HA	1.98	0.45
1:D:201:LEU:C	1:D:201:LEU:HD23	2.36	0.45
1:D:376:GLU:OE2	4:D:2207:HOH:O	2.21	0.45
1:B:295:LEU:HD23	1:B:325:VAL:CG1	2.39	0.45
1:D:140:HIS:HB2	1:D:141:PRO:HD2	1.98	0.45
1:A:26:LEU:HD11	1:A:52:LEU:HG	1.98	0.45
1:B:299:VAL:HG11	1:B:307:PRO:HD3	1.98	0.45
1:C:27:ALA:HB1	1:C:112:VAL:HG13	1.99	0.45
1:D:198:VAL:CG1	1:D:410:ALA:HB2	2.47	0.45
1:D:353:LYS:HD2	4:D:2315:HOH:O	2.17	0.45
1:C:400:VAL:HA	1:C:405:GLN:OE1	2.17	0.45
1:A:27:ALA:HB1	1:A:112:VAL:HG13	1.99	0.45
1:D:79:VAL:O	1:D:83:MET:HG3	2.17	0.45
1:C:72:SER:HB3	1:C:173:LEU:HD23	1.99	0.45
1:B:343:HIS:O	1:C:344:THR:HA	2.17	0.45
1:A:201:LEU:HD23	1:A:201:LEU:C	2.38	0.45
1:B:344:THR:HA	1:C:343:HIS:O	2.17	0.45
1:C:140:HIS:CG	1:C:368:GLN:HG3	2.52	0.45
2:A:1446:CO8:H2'1	3:A:1447:NAP:C7N	2.47	0.44
1:C:273:ALA:O	1:C:274:GLU:C	2.55	0.44
1:D:257:LYS:HE3	1:D:444:ALA:HB1	1.97	0.44
1:B:93:LEU:HD11	1:B:111:HIS:CG	2.52	0.44
1:A:195:GLU:O	1:A:198:VAL:HG22	2.17	0.44
1:C:361:HIS:CE1	2:C:1446:CO8:H5'1	2.53	0.44
1:B:326:ALA:HB3	1:B:355:LYS:HD3	1.98	0.44
1:B:47:ARG:HD2	4:B:2069:HOH:O	2.17	0.44
1:C:106:HIS:CE1	1:C:168:THR:HB	2.52	0.44
1:D:226:ILE:HA	1:D:311:PHE:HB3	1.98	0.44
1:A:146[A]:GLU:HG2	1:B:146:GLU:HB3	1.98	0.44
1:C:208:ARG:HG3	1:C:367:GLU:OE2	2.17	0.44
1:B:89:THR:HA	1:B:92:PHE:CD2	2.53	0.44
1:C:143:HIS:CG	1:C:168:THR:HG21	2.52	0.44
1:D:382:PRO:HB2	4:D:2354:HOH:O	2.18	0.44
1:D:198:VAL:HB	1:D:408:LYS:HB3	2.00	0.44

Continued on next page...

Continued from previous page...

Atom-1	Atom-2	Interatomic distance (Å)	Clash overlap (Å)
1:C:93:LEU:HD11	1:C:111:HIS:CG	2.52	0.44
1:D:316:ARG:HB3	1:D:340:GLY:O	2.18	0.44
3:C:1445:NAP:C7N	2:C:1446:CO8:H2'1	2.48	0.43
1:D:146:GLU:H	1:D:146:GLU:CD	2.22	0.43
1:A:126:ILE:HG13	1:B:62:PRO:HG3	1.99	0.43
1:A:153:GLY:HA3	1:B:366:GLU:OE1	2.17	0.43
1:D:402:THR:OG1	1:D:404:ARG:HD2	2.17	0.43
1:C:351:TRP:CD1	1:C:351:TRP:C	2.91	0.43
1:B:195:GLU:HB3	1:B:382:PRO:HG2	2.00	0.43
1:C:201:LEU:HD23	1:C:201:LEU:C	2.39	0.43
1:C:67:VAL:O	1:C:176:TYR:HA	2.18	0.43
1:B:257:LYS:HE3	1:B:444:ALA:HB1	1.99	0.43
1:B:146:GLU:N	1:B:146:GLU:OE1	2.50	0.43
1:A:89:THR:HA	1:A:92:PHE:CD2	2.54	0.43
1:B:361:HIS:CE1	2:B:1447:CO8:H5'1	2.54	0.43
1:A:297:LYS:HG2	4:A:2381:HOH:O	2.17	0.43
1:C:335:CYS:HA	1:C:360:SER:O	2.18	0.43
1:D:287:ARG:HD2	4:D:2279:HOH:O	2.19	0.43
1:C:116:ASP:O	1:C:117:CYS:HB3	2.18	0.43
1:B:44:LYS:HD2	1:B:85:GLU:OE2	2.19	0.43
1:B:198:VAL:HB	1:B:408:LYS:CB	2.49	0.43
1:B:356:LYS:HE2	4:B:2364:HOH:O	2.19	0.43
1:A:156:MET:HE2	1:A:361:HIS:O	2.19	0.43
3:C:1445:NAP:C4N	2:C:1446:CO8:H3'2	2.49	0.43
1:A:198:VAL:O	1:A:408:LYS:HE2	2.19	0.43
1:B:192:THR:HG21	1:B:419:GLY:HA2	2.00	0.43
1:D:67:VAL:O	1:D:176:TYR:HA	2.19	0.43
1:A:69:VAL:HG11	1:A:172:GLY:O	2.19	0.43
1:D:140:HIS:CG	1:D:368:GLN:HG3	2.54	0.43
1:C:70:MET:HG3	1:C:193:TRP:CE2	2.54	0.43
1:C:257:LYS:HE3	1:C:444:ALA:HB1	2.01	0.42
1:D:242:LYS:HG2	1:D:248:PRO:HG3	2.00	0.42
1:C:269:VAL:O	1:C:302:LYS:HE3	2.18	0.42
1:A:237:ALA:O	1:A:241:VAL:HG23	2.19	0.42
1:A:281:ILE:HG13	1:A:287[A]:ARG:HG2	1.99	0.42
1:D:251:VAL:HG12	1:D:272:ARG:HG3	2.00	0.42
3:B:1446:NAP:C3B	3:B:1446:NAP:H8A	2.49	0.42
1:D:230:SER:HB2	1:D:406:VAL:HG22	2.00	0.42
1:D:288:VAL:HG12	1:D:324:ILE:HD12	2.02	0.42
1:B:350:LEU:HD21	1:C:357:ILE:HG22	2.02	0.42
1:C:198:VAL:HB	1:C:408:LYS:HB3	2.01	0.42

Continued on next page...

Continued from previous page...

Atom-1	Atom-2	Interatomic distance (Å)	Clash overlap (Å)
1:B:285:PRO:HG3	1:C:342:LEU:HD21	2.01	0.42
1:D:69:VAL:HG13	1:D:117:CYS:HB2	2.01	0.42
1:B:226:ILE:HA	1:B:311:PHE:HB3	2.02	0.42
1:C:126:ILE:HG13	1:D:62:PRO:HG3	2.02	0.42
1:A:353:LYS:NZ	2:D:1446:CO8:H121	2.35	0.41
3:B:1446:NAP:H52N	3:B:1446:NAP:H52A	2.01	0.41
1:B:337:SER:CB	1:B:341:TYR:HA	2.50	0.41
1:B:351:TRP:CD1	1:B:351:TRP:C	2.94	0.41
1:A:318:THR:HA	1:A:321:LEU:HD12	2.02	0.41
1:C:381:VAL:HG11	1:C:435:ARG:HD3	2.01	0.41
1:C:286:ARG:NE	4:C:2313:HOH:O	2.54	0.41
1:C:139:VAL:HG21	1:C:179:VAL:HG11	2.02	0.41
1:A:430:ARG:NH1	4:A:2504:HOH:O	2.53	0.41
3:D:1445:NAP:C7N	2:D:1446:CO8:H2'1	2.50	0.41
1:C:180:ARG:HD3	4:C:2120:HOH:O	2.20	0.41
1:D:297:LYS:HA	1:D:297:LYS:HD3	1.53	0.41
1:C:349:TYR:O	1:C:355:LYS:HE3	2.21	0.41
1:A:257:LYS:NZ	3:A:1447:NAP:O3X	2.41	0.41
1:A:257:LYS:HE3	1:A:444:ALA:HB1	2.02	0.41
1:C:326:ALA:HB3	1:C:355:LYS:HD3	2.03	0.41
1:D:216:ALA:HB1	1:D:309:ILE:HG12	2.01	0.41
1:C:237:ALA:O	1:C:241:VAL:HG23	2.20	0.41
1:D:252:VAL:HA	3:D:1445:NAP:O1X	2.20	0.41
1:C:30:LEU:O	1:C:110:TYR:HA	2.21	0.41
1:C:7:VAL:CG1	1:C:70:MET:HE3	2.51	0.41
1:D:131:TRP:CZ3	1:D:137:VAL:HG12	2.56	0.41
1:A:351:TRP:CD1	1:A:351:TRP:C	2.94	0.41
1:B:361:HIS:HB2	1:C:351:TRP:O	2.21	0.41
1:D:295:LEU:HD23	1:D:325:VAL:HG11	2.03	0.41
1:D:93:LEU:HD11	1:D:111:HIS:CG	2.55	0.41
1:A:58:PRO:HG2	1:A:178:VAL:HG21	2.02	0.41
1:D:251:VAL:CG1	1:D:272:ARG:HG2	2.51	0.41
1:D:291:THR:HA	1:D:294:LYS:HE3	2.03	0.41
1:B:143:HIS:CG	1:B:168:THR:HG21	2.56	0.41
1:A:366:GLU:OE1	1:B:153:GLY:HA3	2.21	0.41
1:B:352:MET:HG3	2:C:1446:CO8:CEP	2.51	0.40
1:A:26:LEU:HB3	1:A:175:GLU:HG3	2.02	0.40
1:C:381:VAL:HG11	1:C:435:ARG:CD	2.51	0.40
1:C:89:THR:HA	1:C:92:PHE:CD2	2.56	0.40
1:D:335:CYS:HA	1:D:360:SER:O	2.22	0.40
1:A:361:HIS:HB2	1:D:351:TRP:O	2.21	0.40

Continued on next page...

Continued from previous page...

Atom-1	Atom-2	Interatomic distance (Å)	Clash overlap (Å)
1:A:226:ILE:HA	1:A:311:PHE:HB3	2.03	0.40
1:B:233:LEU:HD12	3:B:1446:NAP:H51N	2.03	0.40
1:C:251:VAL:HG12	1:C:272:ARG:CG	2.52	0.40
1:C:251:VAL:CG1	1:C:272:ARG:HG2	2.52	0.40
1:A:116:ASP:O	1:A:117:CYS:HB3	2.21	0.40
1:D:138:ILE:HG23	1:D:187:LYS:HA	2.03	0.40
1:A:339:SER:HB3	3:A:1447:NAP:H2A	2.03	0.40
1:C:270:ILE:HG23	1:C:298:LEU:HD23	2.03	0.40

There are no symmetry-related clashes.

5.3 Torsion angles [i](#)

5.3.1 Protein backbone [i](#)

In the following table, the Percentiles column shows the percent Ramachandran outliers of the chain as a percentile score with respect to all X-ray entries followed by that with respect to entries of similar resolution.

The Analysed column shows the number of residues for which the backbone conformation was analysed, and the total number of residues.

Mol	Chain	Analysed	Favoured	Allowed	Outliers	Percentiles	
1	A	446/447 (100%)	433 (97%)	12 (3%)	1 (0%)	52	42
1	B	445/447 (100%)	433 (97%)	11 (2%)	1 (0%)	52	42
1	C	444/447 (99%)	429 (97%)	14 (3%)	1 (0%)	52	42
1	D	442/447 (99%)	427 (97%)	13 (3%)	2 (0%)	34	21
All	All	1777/1788 (99%)	1722 (97%)	50 (3%)	5 (0%)	46	35

All (5) Ramachandran outliers are listed below:

Mol	Chain	Res	Type
1	A	313	HIS
1	C	313	HIS
1	D	313	HIS
1	B	313	HIS
1	D	277	ILE

5.3.2 Protein sidechains ⓘ

In the following table, the Percentiles column shows the percent sidechain outliers of the chain as a percentile score with respect to all X-ray entries followed by that with respect to entries of similar resolution.

The Analysed column shows the number of residues for which the sidechain conformation was analysed, and the total number of residues.

Mol	Chain	Analysed	Rotameric	Outliers	Percentiles	
1	A	351/350 (100%)	346 (99%)	5 (1%)	74	71
1	B	350/350 (100%)	344 (98%)	6 (2%)	68	64
1	C	349/350 (100%)	344 (99%)	5 (1%)	74	71
1	D	347/350 (99%)	340 (98%)	7 (2%)	63	57
All	All	1397/1400 (100%)	1374 (98%)	23 (2%)	68	66

All (23) residues with a non-rotameric sidechain are listed below:

Mol	Chain	Res	Type
1	A	39	LYS
1	A	297	LYS
1	A	314	THR
1	A	351	TRP
1	A	435	ARG
1	B	76	TYR
1	B	88	PRO
1	B	314	THR
1	B	316	ARG
1	B	351	TRP
1	B	435	ARG
1	C	116	ASP
1	C	279	ASP
1	C	286	ARG
1	C	351	TRP
1	C	435	ARG
1	D	39	LYS
1	D	76	TYR
1	D	279	ASP
1	D	298	LEU
1	D	314	THR
1	D	351	TRP
1	D	435	ARG

Some sidechains can be flipped to improve hydrogen bonding and reduce clashes. All (2) such sidechains are listed below:

Mol	Chain	Res	Type
1	B	95	GLN
1	B	217	GLN

5.3.3 RNA ⓘ

There are no RNA molecules in this entry.

5.4 Non-standard residues in protein, DNA, RNA chains ⓘ

There are no non-standard protein/DNA/RNA residues in this entry.

5.5 Carbohydrates ⓘ

There are no carbohydrates in this entry.

5.6 Ligand geometry ⓘ

8 ligands are modelled in this entry.

In the following table, the Counts columns list the number of bonds (or angles) for which Mogul statistics could be retrieved, the number of bonds (or angles) that are observed in the model and the number of bonds (or angles) that are defined in the chemical component dictionary. The Link column lists molecule types, if any, to which the group is linked. The Z score for a bond length (or angle) is the number of standard deviations the observed value is removed from the expected value. A bond length (or angle) with $|Z| > 2$ is considered an outlier worth inspection. RMSZ is the root-mean-square of all Z scores of the bond lengths (or angles).

Mol	Type	Chain	Res	Link	Bond lengths			Bond angles		
					Counts	RMSZ	# $ Z > 2$	Counts	RMSZ	# $ Z > 2$
2	CO8	A	1446	-	49,59,59	2.23	9 (18%)	61,85,85	2.16	12 (19%)
3	NAP	A	1447	-	42,52,52	1.68	4 (9%)	54,80,80	2.52	17 (31%)
3	NAP	B	1446	-	42,52,52	1.46	6 (14%)	54,80,80	2.26	10 (18%)
2	CO8	B	1447	-	49,59,59	2.01	8 (16%)	61,85,85	1.90	8 (13%)
3	NAP	C	1445	-	42,52,52	1.38	6 (14%)	54,80,80	3.18	12 (22%)
2	CO8	C	1446	-	49,59,59	2.10	10 (20%)	61,85,85	1.98	9 (14%)
3	NAP	D	1445	-	42,52,52	1.65	7 (16%)	54,80,80	3.24	18 (33%)
2	CO8	D	1446	-	49,59,59	2.00	7 (14%)	61,85,85	2.07	11 (18%)

In the following table, the Chirals column lists the number of chiral outliers, the number of chiral centers analysed, the number of these observed in the model and the number defined in the chemical component dictionary. Similar counts are reported in the Torsion and Rings columns. '-' means no outliers of that kind were identified.

Mol	Type	Chain	Res	Link	Chirals	Torsions	Rings
2	CO8	A	1446	-	-	0/54/74/74	0/3/3/3
3	NAP	A	1447	-	-	0/27/67/67	0/5/5/5
3	NAP	B	1446	-	-	0/27/67/67	0/5/5/5
2	CO8	B	1447	-	-	0/54/74/74	0/3/3/3
3	NAP	C	1445	-	-	0/27/67/67	0/5/5/5
2	CO8	C	1446	-	-	0/54/74/74	0/3/3/3
3	NAP	D	1445	-	-	0/27/67/67	0/5/5/5
2	CO8	D	1446	-	-	0/54/74/74	0/3/3/3

All (57) bond length outliers are listed below:

Mol	Chain	Res	Type	Atoms	Z	Observed(Å)	Ideal(Å)
2	A	1446	CO8	C2'-C1'	-11.07	1.38	1.50
2	B	1447	CO8	C2'-C1'	-10.08	1.39	1.50
2	C	1446	CO8	C2'-C1'	-9.86	1.39	1.50
2	D	1446	CO8	C2'-C1'	-9.83	1.39	1.50
2	A	1446	CO8	C3'-C2'	-3.71	1.38	1.52
2	B	1447	CO8	C3'-C2'	-3.61	1.38	1.52
2	C	1446	CO8	C3'-C2'	-3.35	1.39	1.52
2	D	1446	CO8	C3'-C2'	-3.31	1.39	1.52
2	C	1446	CO8	C4'-C3'	-2.12	1.39	1.51
3	B	1446	NAP	PA-O2A	-2.03	1.46	1.54
3	B	1446	NAP	PA-O1A	2.01	1.58	1.51
2	B	1447	CO8	OAP-CAP	2.01	1.46	1.42
3	C	1445	NAP	PN-O1N	2.03	1.58	1.51
2	B	1447	CO8	O1'-C1'	2.03	1.24	1.21
2	C	1446	CO8	P3B-O8A	2.03	1.62	1.54
2	C	1446	CO8	O1'-C1'	2.05	1.24	1.21
2	C	1446	CO8	C6P-C5P	2.05	1.55	1.51
2	B	1447	CO8	P3B-O8A	2.11	1.62	1.54
2	D	1446	CO8	P3B-O8A	2.14	1.62	1.54
3	C	1445	NAP	C6N-N1N	2.26	1.41	1.35
2	A	1446	CO8	OAP-CAP	2.31	1.46	1.42
3	D	1445	NAP	C6N-N1N	2.43	1.42	1.35
3	B	1446	NAP	O4D-C4D	2.44	1.50	1.45
2	A	1446	CO8	O1'-C1'	2.45	1.24	1.21
2	A	1446	CO8	P2A-O4A	2.45	1.60	1.51
3	C	1445	NAP	O4B-C1B	2.58	1.44	1.41
3	B	1446	NAP	P2B-O1X	2.59	1.59	1.51

Continued on next page...

Continued from previous page...

Mol	Chain	Res	Type	Atoms	Z	Observed(Å)	Ideal(Å)
3	D	1445	NAP	O4D-C1D	2.63	1.44	1.41
3	B	1446	NAP	C6N-N1N	2.72	1.42	1.35
2	D	1446	CO8	P2A-O4A	2.83	1.61	1.51
3	A	1447	NAP	C6N-N1N	2.85	1.43	1.35
2	B	1447	CO8	P3B-O9A	2.88	1.65	1.54
2	A	1446	CO8	P3B-O8A	2.89	1.65	1.54
3	D	1445	NAP	P2B-O2B	2.93	1.68	1.60
2	C	1446	CO8	P1A-O1A	3.05	1.62	1.51
3	D	1445	NAP	PN-O1N	3.07	1.62	1.51
2	C	1446	CO8	P2A-O4A	3.20	1.62	1.51
3	C	1445	NAP	P2B-O2B	3.25	1.69	1.60
2	B	1447	CO8	P2A-O4A	3.38	1.63	1.51
2	D	1446	CO8	P1A-O1A	3.38	1.63	1.51
2	D	1446	CO8	P3B-O7A	3.50	1.62	1.51
2	C	1446	CO8	P3B-O7A	3.53	1.62	1.51
2	A	1446	CO8	P3B-O7A	3.71	1.63	1.51
3	A	1447	NAP	P2B-O1X	3.71	1.63	1.51
3	C	1445	NAP	P2B-O2X	3.72	1.68	1.54
3	D	1445	NAP	P2B-O2X	3.73	1.68	1.54
3	A	1447	NAP	O4D-C1D	3.85	1.46	1.41
2	A	1446	CO8	P1A-O1A	4.11	1.66	1.51
2	A	1446	CO8	O4B-C1B	4.42	1.46	1.41
3	C	1445	NAP	P2B-O1X	4.57	1.66	1.51
3	D	1445	NAP	O4B-C1B	4.80	1.47	1.41
2	D	1446	CO8	O4B-C1B	4.81	1.47	1.41
2	B	1447	CO8	O4B-C1B	5.00	1.47	1.41
3	D	1445	NAP	P2B-O1X	5.16	1.68	1.51
3	B	1446	NAP	O4B-C1B	5.54	1.48	1.41
2	C	1446	CO8	O4B-C1B	5.79	1.48	1.41
3	A	1447	NAP	O4B-C1B	7.16	1.50	1.41

All (97) bond angle outliers are listed below:

Mol	Chain	Res	Type	Atoms	Z	Observed(°)	Ideal(°)
3	D	1445	NAP	N3A-C2A-N1A	-12.52	119.31	128.89
3	C	1445	NAP	O3X-P2B-O1X	-11.73	72.81	110.58
3	B	1446	NAP	N3A-C2A-N1A	-10.87	120.57	128.89
3	C	1445	NAP	N3A-C2A-N1A	-10.26	121.04	128.89
2	A	1446	CO8	N3A-C2A-N1A	-10.02	121.22	128.89
3	C	1445	NAP	O3-PN-O5D	-9.88	76.73	102.94
2	C	1446	CO8	N3A-C2A-N1A	-9.85	121.35	128.89
2	B	1447	CO8	N3A-C2A-N1A	-9.84	121.36	128.89

Continued on next page...

Continued from previous page...

Mol	Chain	Res	Type	Atoms	Z	Observed(°)	Ideal(°)
2	D	1446	CO8	N3A-C2A-N1A	-9.62	121.53	128.89
3	D	1445	NAP	O3X-P2B-O2X	-9.61	70.78	107.38
3	A	1447	NAP	O4D-C1D-N1N	-9.02	98.22	108.13
3	A	1447	NAP	N3A-C2A-N1A	-8.76	122.19	128.89
3	D	1445	NAP	O3-PN-O5D	-8.53	80.30	102.94
3	B	1446	NAP	O4D-C1D-N1N	-7.95	99.40	108.13
3	D	1445	NAP	O3X-P2B-O1X	-7.58	86.19	110.58
3	C	1445	NAP	O3X-P2B-O2X	-7.18	80.03	107.38
2	A	1446	CO8	C2P-C3P-N4P	-5.59	101.17	112.36
3	D	1445	NAP	O4D-C1D-N1N	-5.53	102.06	108.13
3	A	1447	NAP	C3N-C7N-N7N	-4.88	112.48	117.82
3	D	1445	NAP	C3N-C7N-N7N	-4.84	112.52	117.82
2	D	1446	CO8	O1'-C1'-S1P	-4.82	119.00	122.83
3	C	1445	NAP	O2N-PN-O3	-4.44	84.94	105.09
3	C	1445	NAP	C3N-C7N-N7N	-4.43	112.97	117.82
3	A	1447	NAP	O2B-P2B-O1X	-4.41	96.11	107.11
2	C	1446	CO8	O1'-C1'-S1P	-4.36	119.38	122.83
3	A	1447	NAP	C4D-O4D-C1D	-4.27	105.02	109.72
3	D	1445	NAP	O2N-PN-O3	-4.12	86.42	105.09
3	B	1446	NAP	PN-O3-PA	-3.88	121.83	132.73
3	A	1447	NAP	C3N-C2N-N1N	-3.88	115.90	120.36
3	A	1447	NAP	PN-O3-PA	-3.29	123.48	132.73
3	B	1446	NAP	O3-PN-O5D	-3.25	94.30	102.94
3	D	1445	NAP	C5B-C4B-C3B	-2.91	103.64	115.21
2	D	1446	CO8	P2A-O3A-P1A	-2.85	124.74	132.73
2	C	1446	CO8	O1'-C1'-C2'	-2.70	122.08	123.94
3	A	1447	NAP	P2B-O2B-C2B	-2.69	115.11	121.56
2	A	1446	CO8	O8A-P3B-O7A	-2.68	101.94	110.58
3	C	1445	NAP	C1B-N9A-C4A	-2.66	122.92	126.94
3	A	1447	NAP	O3D-C3D-C4D	-2.64	103.14	111.05
3	D	1445	NAP	C1B-N9A-C4A	-2.63	122.97	126.94
2	A	1446	CO8	C1B-N9A-C4A	-2.61	123.00	126.94
2	B	1447	CO8	P3B-O3B-C3B	-2.60	115.34	121.56
3	B	1446	NAP	C3N-C7N-N7N	-2.56	115.02	117.82
3	A	1447	NAP	C1B-N9A-C4A	-2.54	123.11	126.94
3	D	1445	NAP	C4D-O4D-C1D	-2.51	106.96	109.72
3	D	1445	NAP	O4B-C4B-C5B	-2.49	100.43	109.32
3	B	1446	NAP	C4D-O4D-C1D	-2.47	107.01	109.72
2	A	1446	CO8	P3B-O3B-C3B	-2.42	115.76	121.56
2	B	1447	CO8	C6'-C5'-C4'	-2.36	102.36	114.53
3	B	1446	NAP	C1B-N9A-C4A	-2.31	123.46	126.94
2	D	1446	CO8	C7P-C6P-C5P	-2.26	108.59	112.31

Continued on next page...

Continued from previous page...

Mol	Chain	Res	Type	Atoms	Z	Observed(°)	Ideal(°)
2	D	1446	CO8	C2P-C3P-N4P	-2.24	107.88	112.36
2	A	1446	CO8	C7P-C6P-C5P	-2.18	108.72	112.31
2	B	1447	CO8	CEP-CBP-CCP	-2.13	105.73	108.50
3	A	1447	NAP	O3-PN-O5D	-2.08	97.42	102.94
3	D	1445	NAP	C3N-C2N-N1N	-2.07	117.97	120.36
2	A	1446	CO8	O5P-C5P-N4P	-2.05	118.86	122.94
2	D	1446	CO8	C2P-S1P-C1'	-2.04	94.81	102.09
2	A	1446	CO8	C2B-C1B-N9A	-2.03	111.19	114.29
2	D	1446	CO8	C4A-C5A-N7A	-2.03	107.61	109.48
2	C	1446	CO8	O2A-P1A-O3A	2.01	114.21	105.09
3	A	1447	NAP	O3X-P2B-O1X	2.01	117.06	110.58
2	A	1446	CO8	O5A-P2A-O3A	2.02	114.25	105.09
3	A	1447	NAP	O2N-PN-O3	2.02	114.26	105.09
2	C	1446	CO8	O6A-CCP-CBP	2.06	113.86	110.55
3	B	1446	NAP	O3X-P2B-O1X	2.07	117.23	110.58
3	A	1447	NAP	O7N-C7N-N7N	2.07	125.51	122.59
3	C	1445	NAP	O2X-P2B-O1X	2.08	117.27	110.58
3	D	1445	NAP	O5D-PN-O1N	2.11	117.81	109.62
3	C	1445	NAP	O2N-PN-O5D	2.18	119.44	108.46
3	A	1447	NAP	O7N-C7N-C3N	2.19	121.97	119.59
2	B	1447	CO8	C4'-C3'-C2'	2.19	121.33	113.29
2	B	1447	CO8	CEP-CBP-CAP	2.20	113.36	109.34
2	B	1447	CO8	O5A-P2A-O3A	2.25	115.29	105.09
3	B	1446	NAP	N6A-C6A-N1A	2.32	124.17	119.20
3	D	1445	NAP	O4B-C1B-N9A	2.32	112.96	108.10
3	D	1445	NAP	C2A-N1A-C6A	2.33	122.94	118.77
3	B	1446	NAP	C2A-N1A-C6A	2.40	123.05	118.77
2	C	1446	CO8	O5A-P2A-O3A	2.43	116.10	105.09
2	D	1446	CO8	O5A-P2A-O3A	2.51	116.47	105.09
2	A	1446	CO8	C6P-C5P-N4P	2.54	120.88	116.46
3	D	1445	NAP	O7N-C7N-N7N	2.55	126.18	122.59
3	C	1445	NAP	O7N-C7N-C3N	2.63	122.46	119.59
2	D	1446	CO8	C4'-C3'-C2'	2.64	122.98	113.29
3	A	1447	NAP	O3X-P2B-O2X	2.70	117.67	107.38
3	C	1445	NAP	O4B-C1B-N9A	3.02	114.43	108.10
2	C	1446	CO8	C4'-C3'-C2'	3.03	124.40	113.29
3	D	1445	NAP	O2X-P2B-O1X	3.62	122.23	110.58
2	C	1446	CO8	C3'-C2'-C1'	3.72	118.61	113.12
3	D	1445	NAP	C2N-C3N-C4N	3.76	122.48	118.29
2	A	1446	CO8	C3P-N4P-C5P	3.90	130.47	122.79
3	A	1447	NAP	C2N-C3N-C4N	3.97	122.71	118.29
2	D	1446	CO8	C2'-C1'-S1P	4.72	117.61	113.36

Continued on next page...

Continued from previous page...

Mol	Chain	Res	Type	Atoms	Z	Observed(°)	Ideal(°)
3	C	1445	NAP	O2B-P2B-O1X	5.66	121.23	107.11
2	C	1446	CO8	C2'-C1'-S1P	5.76	118.54	113.36
2	D	1446	CO8	C3'-C2'-C1'	5.96	121.92	113.12
2	B	1447	CO8	C3'-C2'-C1'	6.03	122.02	113.12
2	A	1446	CO8	C3'-C2'-C1'	6.82	123.20	113.12

There are no chirality outliers.

There are no torsion outliers.

There are no ring outliers.

8 monomers are involved in 38 short contacts:

Mol	Chain	Res	Type	Clashes	Symm-Clashes
2	A	1446	CO8	2	0
3	A	1447	NAP	7	0
3	B	1446	NAP	9	0
2	B	1447	CO8	4	0
3	C	1445	NAP	6	0
2	C	1446	CO8	5	0
3	D	1445	NAP	5	0
2	D	1446	CO8	5	0

5.7 Other polymers [i](#)

There are no such residues in this entry.

5.8 Polymer linkage issues [i](#)

There are no chain breaks in this entry.

6 Fit of model and data ⓘ

6.1 Protein, DNA and RNA chains ⓘ

In the following table, the column labelled ‘#RSRZ> 2’ contains the number (and percentage) of RSRZ outliers, followed by percent RSRZ outliers for the chain as percentile scores relative to all X-ray entries and entries of similar resolution. The OWAB column contains the minimum, median, 95th percentile and maximum values of the occupancy-weighted average B-factor per residue. The column labelled ‘Q< 0.9’ lists the number of (and percentage) of residues with an average occupancy less than 0.9.

Mol	Chain	Analysed	<RSRZ>	#RSRZ>2			OWAB(Å ²)	Q<0.9
1	A	445/447 (99%)	0.67	21 (4%)	35	38	14, 20, 36, 46	1 (0%)
1	B	445/447 (99%)	0.65	25 (5%)	28	31	13, 20, 37, 47	1 (0%)
1	C	444/447 (99%)	0.48	19 (4%)	39	42	13, 21, 38, 58	3 (0%)
1	D	444/447 (99%)	0.78	35 (7%)	15	17	15, 23, 41, 58	0
All	All	1778/1788 (99%)	0.65	100 (5%)	28	31	13, 21, 39, 58	5 (0%)

All (100) RSRZ outliers are listed below:

Mol	Chain	Res	Type	RSRZ
1	D	282	ALA	5.4
1	C	276	GLY	5.3
1	B	275	LEU	4.9
1	D	53	GLY	4.9
1	D	275	LEU	4.2
1	C	273	ALA	4.2
1	C	80	TRP	4.1
1	D	76	TYR	3.8
1	A	274	GLU	3.4
1	C	87	ILE	3.4
1	A	275	LEU	3.4
1	B	210	LEU	3.2
1	C	274	GLU	3.2
1	B	211	VAL	3.2
1	B	290	GLU	3.1
1	D	87	ILE	3.1
1	B	286	ARG	3.1
1	C	281	ILE	3.1
1	A	13	ALA	3.1
1	C	278	THR	2.9
1	D	273	ALA	2.9

Continued on next page...

Continued from previous page...

Mol	Chain	Res	Type	RSRZ
1	C	76	TYR	2.9
1	A	354	LEU	2.8
1	A	211	VAL	2.8
1	B	274	GLU	2.7
1	C	435	ARG	2.7
1	D	157	LEU	2.7
1	D	144	VAL	2.7
1	D	1	SER	2.7
1	A	41	VAL	2.7
1	D	309	ILE	2.7
1	A	286	ARG	2.7
1	C	150	ALA	2.6
1	D	153	GLY	2.6
1	A	273	ALA	2.6
1	A	363	ALA	2.6
1	B	363	ALA	2.6
1	A	207	TYR	2.6
1	B	207	TYR	2.6
1	D	276	GLY	2.5
1	A	157	LEU	2.5
1	C	36	ASP	2.5
1	D	332	VAL	2.5
1	B	209	MET	2.5
1	B	157	LEU	2.5
1	D	363	ALA	2.5
1	D	279	ASP	2.5
1	B	142	ALA	2.4
1	D	435	ARG	2.4
1	D	9	ASP	2.4
1	B	203	ALA	2.4
1	D	151	THR	2.4
1	D	233	LEU	2.4
1	D	211	VAL	2.4
1	D	156	MET	2.4
1	D	80	TRP	2.3
1	D	142	ALA	2.3
1	D	150	ALA	2.3
1	B	273	ALA	2.3
1	D	216	ALA	2.3
1	B	139	VAL	2.3
1	C	279	ASP	2.3
1	D	40	GLY	2.3

Continued on next page...

Continued from previous page...

Mol	Chain	Res	Type	RSRZ
1	C	286	ARG	2.3
1	B	185	LEU	2.3
1	B	216	ALA	2.3
1	D	274	GLU	2.2
1	D	430	ARG	2.2
1	C	153	GLY	2.2
1	D	152	HIS	2.2
1	A	357	ILE	2.2
1	C	283	ASP	2.2
1	D	205	THR	2.2
1	A	309	ILE	2.1
1	C	151	THR	2.1
1	D	36	ASP	2.1
1	B	215	GLY	2.1
1	B	241	VAL	2.1
1	A	210	LEU	2.1
1	B	205	THR	2.1
1	D	207	TYR	2.1
1	B	138	ILE	2.1
1	C	434	ASP	2.1
1	C	144	VAL	2.1
1	D	212	SER	2.1
1	D	224	VAL	2.1
1	A	331	THR	2.1
1	B	330	GLY	2.1
1	B	240	PHE	2.0
1	A	142	ALA	2.0
1	A	350	LEU	2.0
1	C	342	LEU	2.0
1	A	206	ALA	2.0
1	A	370	ALA	2.0
1	A	215	GLY	2.0
1	A	23	ASP	2.0
1	B	36	ASP	2.0
1	B	358	VAL	2.0
1	D	21	VAL	2.0
1	B	206	ALA	2.0

6.2 Non-standard residues in protein, DNA, RNA chains ⓘ

There are no non-standard protein/DNA/RNA residues in this entry.

6.3 Carbohydrates [i](#)

There are no carbohydrates in this entry.

6.4 Ligands [i](#)

In the following table, the Atoms column lists the number of modelled atoms in the group and the number defined in the chemical component dictionary. LLDF column lists the quality of electron density of the group with respect to its neighbouring residues in protein, DNA or RNA chains. The B-factors column lists the minimum, median, 95th percentile and maximum values of B factors of atoms in the group. The column labelled 'Q< 0.9' lists the number of atoms with occupancy less than 0.9.

Mol	Type	Chain	Res	Atoms	RSCC	RSR	LLDF	B-factors(\AA^2)	Q<0.9
2	CO8	C	1446	57/57	0.59	0.37	4.52	11,78,88,88	0
2	CO8	D	1446	57/57	0.69	0.30	2.96	7,50,68,68	0
2	CO8	B	1447	57/57	0.82	0.24	2.33	6,31,46,46	0
2	CO8	A	1446	57/57	0.88	0.22	2.30	2,27,40,41	0
3	NAP	C	1445	48/48	0.92	0.17	1.58	10,18,25,27	0
3	NAP	D	1445	48/48	0.93	0.14	-0.37	10,15,23,23	0
3	NAP	B	1446	48/48	0.96	0.10	-1.53	2,9,16,17	0
3	NAP	A	1447	48/48	0.95	0.10	-1.93	2,8,14,16	0

6.5 Other polymers [i](#)

There are no such residues in this entry.