



Full wwPDB X-ray Structure Validation Report ⓘ

Feb 1, 2016 – 12:22 AM GMT

PDB ID : 2A1M
Title : Crystal structure of ferrous dioxygen complex of wild-type cytochrome P450cam
Authors : Nagano, S.; Poulos, T.L.
Deposited on : 2005-06-20
Resolution : 2.10 Å(reported)

This is a Full wwPDB X-ray Structure Validation Report for a publicly released PDB entry.
We welcome your comments at validation@mail.wwpdb.org
A user guide is available at
<http://wwpdb.org/validation/2016/XrayValidationReportHelp>
with specific help available everywhere you see the ⓘ symbol.

The following versions of software and data (see [references ⓘ](#)) were used in the production of this report:

MolProbity : 4.02b-467
Mogul : 1.7 (RC4), CSD as536be (2015)
Xtriage (Phenix) : 1.9-1692
EDS : rb-20026688
Percentile statistics : 20151230.v01 (using entries in the PDB archive December 30th 2015)
Refmac : 5.8.0135
CCP4 : 6.5.0
Ideal geometry (proteins) : Engh & Huber (2001)
Ideal geometry (DNA, RNA) : Parkinson et al. (1996)
Validation Pipeline (wwPDB-VP) : trunk26865

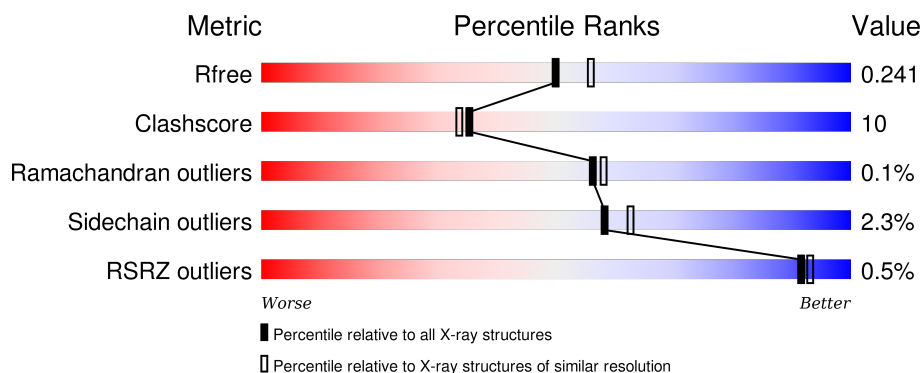
1 Overall quality at a glance

The following experimental techniques were used to determine the structure:

X-RAY DIFFRACTION



The reported resolution of this entry is 2.10 Å.

Percentile scores (ranging between 0-100) for global validation metrics of the entry are shown in the following graphic. The table shows the number of entries on which the scores are based.



Metric	Whole archive (#Entries)	Similar resolution (#Entries, resolution range(Å))
R_{free}	91344	3939 (2.10-2.10)
Clashscore	102246	4460 (2.10-2.10)
Ramachandran outliers	100387	4413 (2.10-2.10)
Sidechain outliers	100360	4414 (2.10-2.10)
RSRZ outliers	91569	3948 (2.10-2.10)

The table below summarises the geometric issues observed across the polymeric chains and their fit to the electron density. The red, orange, yellow and green segments on the lower bar indicate the fraction of residues that contain outliers for ≥ 3 , 2, 1 and 0 types of geometric quality criteria. A grey segment represents the fraction of residues that are not modelled. The numeric value for each fraction is indicated below the corresponding segment, with a dot representing fractions $\leq 5\%$. The upper red bar (where present) indicates the fraction of residues that have poor fit to the electron density. The numeric value is given above the bar.

Mol	Chain	Length	Quality of chain
1	A	415	 78% 19% ..
1	B	415	 76% 20% ..

The following table lists non-polymeric compounds, carbohydrate monomers and non-standard residues in protein, DNA, RNA chains that are outliers for geometric or electron-density-fit criteria:

Mol	Type	Chain	Res	Chirality	Geometry	Clashes	Electron density
6	TRS	B	2430	-	-	-	X

2 Entry composition

There are 7 unique types of molecules in this entry. The entry contains 6972 atoms, of which 0 are hydrogens and 0 are deuteriums.

In the tables below, the ZeroOcc column contains the number of atoms modelled with zero occupancy, the AltConf column contains the number of residues with at least one atom in alternate conformation and the Trace column contains the number of residues modelled with at most 2 atoms.

- Molecule 1 is a protein called Cytochrome P450-cam.

Mol	Chain	Residues	Atoms					ZeroOcc	AltConf	Trace
1	A	405	Total	C	N	O	S	0	0	0
			3207	2033	560	597	17			
1	B	405	Total	C	N	O	S	0	0	0
			3207	2033	560	597	17			

There are 2 discrepancies between the modelled and reference sequences:

Chain	Residue	Modelled	Actual	Comment	Reference
A	334	ALA	CYS	ENGINEERED	UNP P00183
B	334	ALA	CYS	ENGINEERED	UNP P00183

- Molecule 2 is POTASSIUM ION (three-letter code: K) (formula: K).

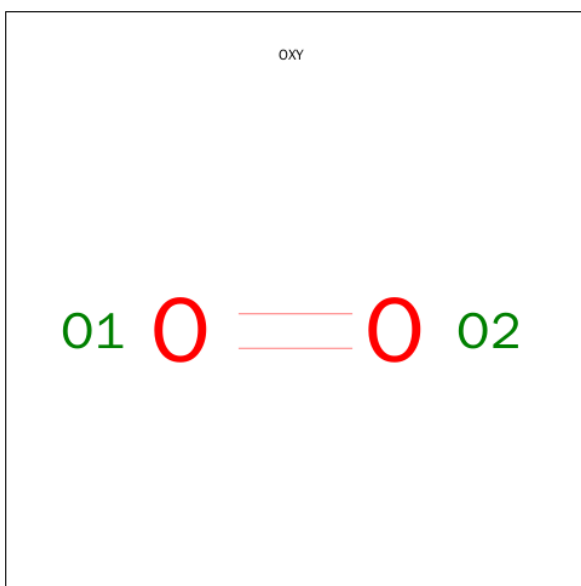
Mol	Chain	Residues	Atoms		ZeroOcc	AltConf
2	B	1	Total	K	0	0
			1	1		
2	A	2	Total	K	0	0
			2	2		

- Molecule 3 is PROTOPORPHYRIN IX CONTAINING FE (three-letter code: HEM) (formula: C₃₄H₃₂FeN₄O₄).



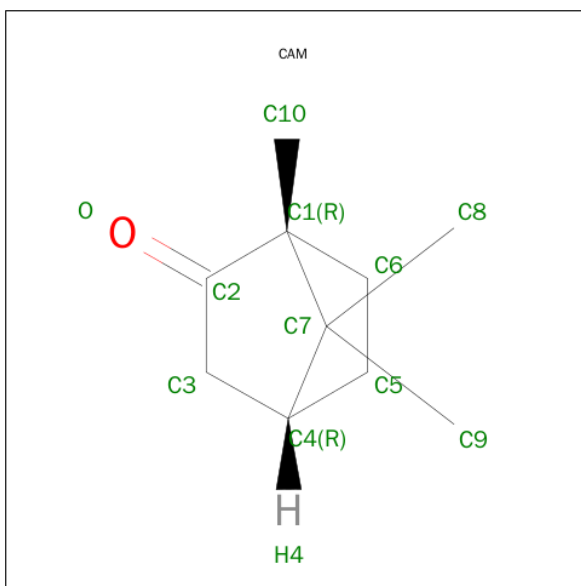
Mol	Chain	Residues	Atoms					ZeroOcc	AltConf
3	A	1	Total 43	C 34	Fe 1	N 4	O 4	0	0
3	B	1	Total 43	C 34	Fe 1	N 4	O 4	0	0

- Molecule 4 is OXYGEN MOLECULE (three-letter code: OXY) (formula: O_2).



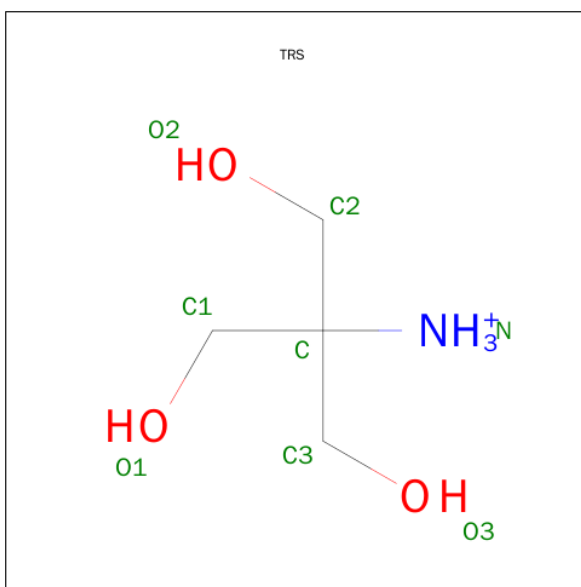
Mol	Chain	Residues	Atoms	ZeroOcc	AltConf
4	A	1	Total O 2 2	0	0
4	B	1	Total O 2 2	0	0

- Molecule 5 is CAMPHOR (three-letter code: CAM) (formula: $C_{10}H_{16}O$).



Mol	Chain	Residues	Atoms			ZeroOcc	AltConf
5	A	1	Total	C	O	0	0
			11	10	1		
5	B	1	Total	C	O	0	0
			11	10	1		

- Molecule 6 is 2-AMINO-2-HYDROXYMETHYL-PROPANE-1,3-DIOL (three-letter code: TRS) (formula: $C_4H_{12}NO_3$).



Mol	Chain	Residues	Atoms				ZeroOcc	AltConf
6	B	1	Total	C	N	O	0	0
			8	4	1	3		

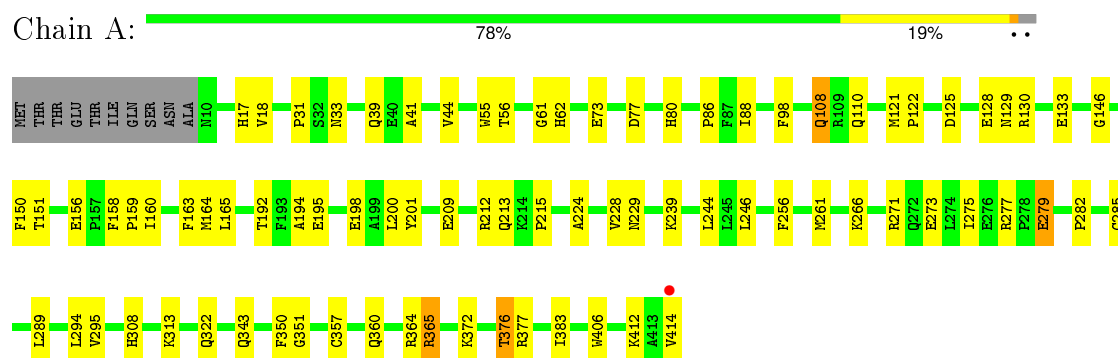
- Molecule 7 is water.

Mol	Chain	Residues	Atoms		ZeroOcc	AltConf
7	A	249	Total	O	0	0
			249	249		
7	B	186	Total	O	0	0
			186	186		

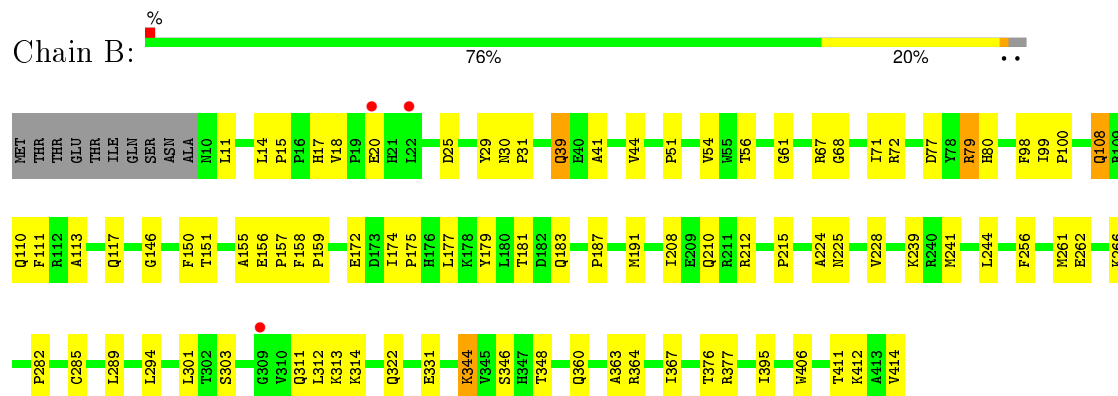
3 Residue-property plots [i](#)

These plots are drawn for all protein, RNA and DNA chains in the entry. The first graphic for a chain summarises the proportions of errors displayed in the second graphic. The second graphic shows the sequence view annotated by issues in geometry and electron density. Residues are color-coded according to the number of geometric quality criteria for which they contain at least one outlier: green = 0, yellow = 1, orange = 2 and red = 3 or more. A red dot above a residue indicates a poor fit to the electron density ($RSRZ > 2$). Stretches of 2 or more consecutive residues without any outlier are shown as a green connector. Residues present in the sample, but not in the model, are shown in grey.

• Molecule 1: Cytochrome P450-cam



• Molecule 1: Cytochrome P450-cam



4 Data and refinement statistics

Property	Value	Source
Space group	P 1 21 1	Depositor
Cell constants a, b, c, α , β , γ	67.06Å 62.29Å 95.64Å 90.00° 90.42° 90.00°	Depositor
Resolution (Å)	47.82 – 2.10 47.82 – 2.10	Depositor EDS
% Data completeness (in resolution range)	(Not available) (47.82-2.10) 90.2 (47.82-2.10)	Depositor EDS
R_{merge}	(Not available)	Depositor
R_{sym}	(Not available)	Depositor
$\langle I/\sigma(I) \rangle$ ¹	2.19 (at 2.10Å)	Xtriage
Refinement program	CNS 1.1	Depositor
R, R_{free}	0.191 , 0.247 0.189 , 0.241	Depositor DCC
R_{free} test set	2179 reflections (5.49%)	DCC
Wilson B-factor (Å ²)	18.1	Xtriage
Anisotropy	0.266	Xtriage
Bulk solvent k_{sol} (e/Å ³), B_{sol} (Å ²)	0.34 , 47.0	EDS
Estimated twinning fraction	0.039 for h,-k,-l	Xtriage
L-test for twinning ²	$\langle L \rangle = 0.49$, $\langle L^2 \rangle = 0.32$	Xtriage
Outliers	0 of 43592 reflections	Xtriage
F_o, F_c correlation	0.94	EDS
Total number of atoms	6972	wwPDB-VP
Average B, all atoms (Å ²)	21.0	wwPDB-VP

Xtriage's analysis on translational NCS is as follows: *The largest off-origin peak in the Patterson function is 5.17% of the height of the origin peak. No significant pseudotranslation is detected.*

¹Intensities estimated from amplitudes.

²Theoretical values of $\langle |L| \rangle$, $\langle L^2 \rangle$ for acentric reflections are 0.5, 0.375 respectively for untwinned datasets, and 0.333, 0.2 for perfectly twinned datasets.

5 Model quality [i](#)

5.1 Standard geometry [i](#)

Bond lengths and bond angles in the following residue types are not validated in this section: TRS, HEM, K, OXY, CAM

The Z score for a bond length (or angle) is the number of standard deviations the observed value is removed from the expected value. A bond length (or angle) with $|Z| > 5$ is considered an outlier worth inspection. RMSZ is the root-mean-square of all Z scores of the bond lengths (or angles).

Mol	Chain	Bond lengths		Bond angles	
		RMSZ	$\# Z > 5$	RMSZ	$\# Z > 5$
1	A	0.33	0/3286	0.60	0/4464
1	B	0.31	0/3286	0.57	0/4464
All	All	0.32	0/6572	0.58	0/8928

There are no bond length outliers.

There are no bond angle outliers.

There are no chirality outliers.

There are no planarity outliers.

5.2 Too-close contacts [i](#)

In the following table, the Non-H and H(model) columns list the number of non-hydrogen atoms and hydrogen atoms in the chain respectively. The H(added) column lists the number of hydrogen atoms added and optimized by MolProbity. The Clashes column lists the number of clashes within the asymmetric unit, whereas Symm-Clashes lists symmetry related clashes.

Mol	Chain	Non-H	H(model)	H(added)	Clashes	Symm-Clashes
1	A	3207	0	3156	60	0
1	B	3207	0	3156	66	0
2	A	2	0	0	0	0
2	B	1	0	0	0	0
3	A	43	0	30	1	0
3	B	43	0	30	0	0
4	A	2	0	0	1	0
4	B	2	0	0	0	0
5	A	11	0	16	1	0
5	B	11	0	16	0	0
6	B	8	0	12	0	0

Continued on next page...

Continued from previous page...

Mol	Chain	Non-H	H(model)	H(added)	Clashes	Symm-Clashes
7	A	249	0	0	1	0
7	B	186	0	0	0	0
All	All	6972	0	6416	127	0

The all-atom clashscore is defined as the number of clashes found per 1000 atoms (including hydrogen atoms). The all-atom clashscore for this structure is 10.

All (127) close contacts within the same asymmetric unit are listed below, sorted by their clash magnitude.

Atom-1	Atom-2	Interatomic distance (Å)	Clash overlap (Å)
1:B:360:GLN:HE21	1:B:364:ARG:HH22	1.17	0.92
1:A:277:ARG:HA	1:A:277:ARG:HE	1.44	0.83
1:B:51:PRO:HG2	1:B:54:VAL:HG12	1.62	0.82
1:A:130:ARG:HD2	1:A:165:LEU:HD21	1.60	0.82
1:A:377:ARG:HH21	1:A:414:VAL:HG21	1.46	0.79
1:B:29:TYR:OH	1:B:395:ILE:HD11	1.84	0.77
1:A:163:PHE:HE2	1:A:246:LEU:HD23	1.50	0.77
1:B:344:LYS:HE2	1:B:346:SER:HB2	1.69	0.75
1:A:266:LYS:HE3	1:A:383:ILE:CD1	2.17	0.73
1:B:158:PHE:HB3	1:B:159:PRO:HD3	1.71	0.71
1:B:294:LEU:H	1:B:294:LEU:HD23	1.56	0.70
1:B:68:GLY:HA3	1:B:331:GLU:OE2	1.92	0.69
1:B:14:LEU:H	1:B:14:LEU:HD23	1.58	0.68
1:A:360:GLN:HE21	1:A:364:ARG:HH22	1.42	0.67
1:B:395:ILE:H	1:B:395:ILE:HD12	1.58	0.66
1:B:360:GLN:NE2	1:B:364:ARG:HH22	1.90	0.65
1:A:129:ASN:HB2	7:A:1926:HOH:O	2.00	0.62
1:B:301:LEU:HD11	1:B:312:LEU:HD23	1.80	0.62
1:B:20:GLU:H	1:B:20:GLU:CD	2.04	0.61
1:B:376:THR:HG22	1:B:414:VAL:HG21	1.82	0.61
1:A:163:PHE:CE2	1:A:246:LEU:HD23	2.34	0.61
1:A:377:ARG:NH2	1:A:414:VAL:HG21	2.16	0.60
1:B:395:ILE:HD12	1:B:395:ILE:N	2.16	0.60
1:B:156:GLU:HB2	1:B:157:PRO:HD3	1.85	0.59
1:A:376:THR:O	1:A:412:LYS:HE3	2.03	0.59
1:A:294:LEU:HD23	1:A:294:LEU:H	1.68	0.58
1:B:72:ARG:HH12	1:B:331:GLU:CD	2.06	0.58
1:B:256:PHE:CE2	1:B:289:LEU:HA	2.39	0.58
1:B:56:THR:O	1:B:61:GLY:HA2	2.04	0.57
1:B:376:THR:CG2	1:B:414:VAL:HG21	2.34	0.57
1:B:150:PHE:CZ	1:B:261:MET:HG3	2.38	0.57

Continued on next page...

Continued from previous page...

Atom-1	Atom-2	Interatomic distance (Å)	Clash overlap (Å)
1:A:17:HIS:CD2	1:A:313:LYS:HG2	2.39	0.57
1:B:294:LEU:N	1:B:294:LEU:HD23	2.19	0.57
1:B:179:TYR:O	1:B:183:GLN:HG2	2.07	0.55
1:B:51:PRO:HG2	1:B:54:VAL:CG1	2.35	0.55
1:B:212:ARG:HG3	1:B:224:ALA:HB1	1.89	0.55
1:A:266:LYS:HE3	1:A:383:ILE:HD12	1.88	0.54
1:A:128:GLU:HG3	1:A:129:ASN:N	2.21	0.54
1:A:121:MET:N	1:A:122:PRO:HD2	2.23	0.54
1:A:77:ASP:OD2	1:A:80:HIS:HD2	1.90	0.54
1:A:98:PHE:HB3	1:A:244:LEU:HB2	1.90	0.54
1:B:344:LYS:CE	1:B:346:SER:HB2	2.37	0.53
1:B:41:ALA:O	1:B:44:VAL:HG22	2.09	0.53
1:A:282:PRO:O	1:A:285:CYS:HB3	2.09	0.53
1:A:322:GLN:HG2	1:A:351:GLY:HA2	1.91	0.52
1:A:150:PHE:CZ	1:A:261:MET:HG3	2.45	0.51
1:A:125:ASP:O	1:A:128:GLU:HG2	2.10	0.51
1:A:271:ARG:O	1:A:275:ILE:HG13	2.10	0.51
1:B:395:ILE:H	1:B:395:ILE:CD1	2.24	0.51
1:A:360:GLN:NE2	1:A:364:ARG:HH22	2.07	0.50
1:A:294:LEU:HD23	1:A:294:LEU:N	2.26	0.50
1:A:62:HIS:CG	1:A:88:ILE:HD13	2.45	0.50
1:B:151:THR:HA	1:B:155:ALA:HB3	1.93	0.50
1:A:158:PHE:HB3	1:A:159:PRO:CD	2.42	0.50
1:A:277:ARG:HA	1:A:277:ARG:NE	2.19	0.50
1:B:14:LEU:N	1:B:14:LEU:HD23	2.26	0.50
1:A:41:ALA:O	1:A:44:VAL:HG22	2.12	0.50
1:B:172:GLU:OE1	1:B:172:GLU:N	2.43	0.49
1:B:11:LEU:N	1:B:11:LEU:HD22	2.26	0.49
1:B:39:GLN:NE2	1:B:39:GLN:H	2.10	0.49
1:B:100:PRO:HB3	1:B:111:PHE:HB2	1.94	0.49
1:B:98:PHE:HB3	1:B:244:LEU:HB2	1.93	0.49
4:A:420:OXY:O1	5:A:1422:CAM:H52	2.14	0.48
1:A:128:GLU:HG3	1:A:129:ASN:H	1.76	0.48
1:B:414:VAL:HG12	1:B:414:VAL:O	2.14	0.48
1:A:273:GLU:O	1:A:277:ARG:HB2	2.13	0.48
1:A:56:THR:O	1:A:61:GLY:HA2	2.13	0.47
1:B:294:LEU:N	1:B:294:LEU:CD2	2.77	0.47
1:B:14:LEU:H	1:B:14:LEU:CD2	2.25	0.46
1:A:279:GLU:CD	1:A:279:GLU:H	2.12	0.46
1:A:256:PHE:CE2	1:A:289:LEU:HA	2.51	0.46
1:A:212:ARG:HG3	1:A:224:ALA:HB1	1.97	0.46

Continued on next page...

Continued from previous page...

Atom-1	Atom-2	Interatomic distance (Å)	Clash overlap (Å)
1:A:73:GLU:OE1	1:A:308:HIS:HE1	1.97	0.46
1:B:322:GLN:HB3	1:B:348:THR:O	2.15	0.46
1:A:194:ALA:O	1:A:198:GLU:HG3	2.15	0.46
1:B:39:GLN:HE21	1:B:39:GLN:H	1.64	0.46
1:A:209:GLU:O	1:A:213:GLN:HG2	2.16	0.45
1:A:108:GLN:HE21	1:A:108:GLN:HB3	1.53	0.45
1:B:177:LEU:O	1:B:181:THR:HG23	2.16	0.45
1:A:213:GLN:O	1:A:215:PRO:HD3	2.17	0.45
1:B:31:PRO:HB2	1:B:41:ALA:HB1	1.99	0.45
1:A:277:ARG:CA	1:A:277:ARG:HE	2.23	0.45
1:A:33:ASN:HB3	1:A:41:ALA:HA	1.99	0.45
1:A:130:ARG:HD2	1:A:165:LEU:CD2	2.40	0.45
1:B:72:ARG:NH1	1:B:331:GLU:OE2	2.46	0.45
1:B:179:TYR:CE2	1:B:191:MET:HE2	2.53	0.44
1:B:377:ARG:O	1:B:411:THR:HB	2.17	0.44
1:A:146:GLY:HA2	1:A:406:TRP:NE1	2.32	0.44
1:B:183:GLN:HG3	1:B:191:MET:HE3	1.98	0.44
1:A:201:TYR:HB3	1:A:239:LYS:HD2	2.00	0.44
1:A:62:HIS:CD2	1:A:88:ILE:HD13	2.53	0.44
1:A:110:GLN:NE2	1:A:228:VAL:HG12	2.33	0.44
1:A:18:VAL:HG11	1:A:55:TRP:CG	2.53	0.43
1:B:17:HIS:CD2	1:B:313:LYS:HB2	2.54	0.43
1:B:15:PRO:HG2	1:B:18:VAL:HG23	2.01	0.43
1:B:262:GLU:O	1:B:266:LYS:HG3	2.18	0.43
1:B:344:LYS:HD2	1:B:344:LYS:C	2.38	0.43
1:B:303:SER:HA	1:B:314:LYS:HG3	2.01	0.43
1:A:192:THR:OG1	1:A:195:GLU:HG3	2.19	0.43
1:B:79:ARG:HG2	1:B:79:ARG:HH11	1.83	0.42
1:A:160:ILE:O	1:A:164:MET:HG2	2.19	0.42
1:B:99:ILE:HG22	1:B:241:MET:HE3	2.01	0.42
1:B:77:ASP:OD1	1:B:80:HIS:HD2	2.02	0.42
1:B:67:ARG:O	1:B:71:ILE:HG13	2.19	0.42
1:B:282:PRO:O	1:B:285:CYS:HB3	2.20	0.42
1:A:151:THR:O	1:A:156:GLU:HG3	2.19	0.42
1:A:266:LYS:HE3	1:A:383:ILE:HD13	2.00	0.42
1:A:110:GLN:HE21	1:A:229:ASN:HB2	1.84	0.42
1:B:174:ILE:HB	1:B:175:PRO:HD3	2.02	0.42
1:A:295:VAL:HG21	3:A:417:HEM:HMA2	2.01	0.42
1:B:363:ALA:O	1:B:367:ILE:HG13	2.20	0.41
1:A:110:GLN:HB2	1:A:228:VAL:HG12	2.02	0.41
1:A:376:THR:HG22	1:A:377:ARG:HG3	2.02	0.41

Continued on next page...

Continued from previous page...

Atom-1	Atom-2	Interatomic distance (Å)	Clash overlap (Å)
1:B:208:ILE:CD1	1:B:239:LYS:HA	2.50	0.41
1:A:31:PRO:HB2	1:A:41:ALA:HB1	2.02	0.41
1:B:108:GLN:HB3	1:B:108:GLN:HE21	1.53	0.41
1:B:113:ALA:O	1:B:117:GLN:HG3	2.21	0.41
1:B:146:GLY:HA2	1:B:406:TRP:CD1	2.56	0.41
1:B:110:GLN:HB2	1:B:228:VAL:HG12	2.02	0.41
1:B:376:THR:O	1:B:412:LYS:NZ	2.43	0.40
1:A:350:PHE:HB3	1:A:357:CYS:HB3	2.02	0.40
1:A:372:LYS:HE3	1:A:372:LYS:HB2	1.82	0.40
1:A:128:GLU:HB2	1:A:365:ARG:HH22	1.86	0.40
1:A:294:LEU:CD2	1:A:294:LEU:N	2.84	0.40
1:B:183:GLN:O	1:B:187:PRO:HB3	2.21	0.40
1:B:215:PRO:HB3	1:B:225:ASN:ND2	2.36	0.40
1:B:208:ILE:HD11	1:B:239:LYS:HA	2.04	0.40

There are no symmetry-related clashes.

5.3 Torsion angles [i](#)

5.3.1 Protein backbone [i](#)

In the following table, the Percentiles column shows the percent Ramachandran outliers of the chain as a percentile score with respect to all X-ray entries followed by that with respect to entries of similar resolution.

The Analysed column shows the number of residues for which the backbone conformation was analysed, and the total number of residues.

Mol	Chain	Analysed	Favoured	Allowed	Outliers	Percentiles	
1	A	403/415 (97%)	391 (97%)	12 (3%)	0	100	100
1	B	403/415 (97%)	381 (94%)	21 (5%)	1 (0%)	52	53
All	All	806/830 (97%)	772 (96%)	33 (4%)	1 (0%)	56	58

All (1) Ramachandran outliers are listed below:

Mol	Chain	Res	Type
1	B	25	ASP

5.3.2 Protein sidechains ⓘ

In the following table, the Percentiles column shows the percent sidechain outliers of the chain as a percentile score with respect to all X-ray entries followed by that with respect to entries of similar resolution.

The Analysed column shows the number of residues for which the sidechain conformation was analysed, and the total number of residues.

Mol	Chain	Analysed	Rotameric	Outliers	Percentiles	
1	A	349/358 (98%)	340 (97%)	9 (3%)	54	58
1	B	349/358 (98%)	342 (98%)	7 (2%)	63	68
All	All	698/716 (98%)	682 (98%)	16 (2%)	58	62

All (16) residues with a non-rotameric sidechain are listed below:

Mol	Chain	Res	Type
1	A	39	GLN
1	A	86	PRO
1	A	108	GLN
1	A	133	GLU
1	A	200	LEU
1	A	279	GLU
1	A	343	GLN
1	A	365	ARG
1	A	376	THR
1	B	30	ASN
1	B	39	GLN
1	B	79	ARG
1	B	108	GLN
1	B	210	GLN
1	B	311	GLN
1	B	344	LYS

Some sidechains can be flipped to improve hydrogen bonding and reduce clashes. All (27) such sidechains are listed below:

Mol	Chain	Res	Type
1	A	39	GLN
1	A	46	GLN
1	A	80	HIS
1	A	108	GLN
1	A	110	GLN
1	A	117	GLN

Continued on next page...

Continued from previous page...

Mol	Chain	Res	Type
1	A	129	ASN
1	A	132	GLN
1	A	227	GLN
1	A	272	GLN
1	A	308	HIS
1	A	360	GLN
1	A	400	GLN
1	B	30	ASN
1	B	33	ASN
1	B	39	GLN
1	B	46	GLN
1	B	80	HIS
1	B	108	GLN
1	B	117	GLN
1	B	129	ASN
1	B	132	GLN
1	B	147	GLN
1	B	311	GLN
1	B	317	GLN
1	B	360	GLN
1	B	390	GLN

5.3.3 RNA [i](#)

There are no RNA molecules in this entry.

5.4 Non-standard residues in protein, DNA, RNA chains [i](#)

There are no non-standard protein/DNA/RNA residues in this entry.

5.5 Carbohydrates [i](#)

There are no carbohydrates in this entry.

5.6 Ligand geometry [i](#)

Of 10 ligands modelled in this entry, 3 are monoatomic - leaving 7 for Mogul analysis.

In the following table, the Counts columns list the number of bonds (or angles) for which Mogul statistics could be retrieved, the number of bonds (or angles) that are observed in the model and the number of bonds (or angles) that are defined in the chemical component dictionary. The Link

column lists molecule types, if any, to which the group is linked. The Z score for a bond length (or angle) is the number of standard deviations the observed value is removed from the expected value. A bond length (or angle) with $|Z| > 2$ is considered an outlier worth inspection. RMSZ is the root-mean-square of all Z scores of the bond lengths (or angles).

Mol	Type	Chain	Res	Link	Bond lengths			Bond angles		
					Counts	RMSZ	# Z > 2	Counts	RMSZ	# Z > 2
5	CAM	A	1422	-	12,12,12	1.95	4 (33%)	21,21,21	1.86	5 (23%)
3	HEM	A	417	1,4	30,50,50	2.76	9 (30%)	24,82,82	2.15	8 (33%)
4	OXY	A	420	3	1,1,1	0.06	0	0,0,0	0.00	-
5	CAM	B	2422	-	12,12,12	2.05	4 (33%)	21,21,21	1.83	5 (23%)
6	TRS	B	2430	-	7,7,7	2.10	3 (42%)	9,9,9	3.28	5 (55%)
3	HEM	B	417	1,4	30,50,50	2.74	8 (26%)	24,82,82	2.04	7 (29%)
4	OXY	B	420	3	1,1,1	0.01	0	0,0,0	0.00	-

In the following table, the Chirals column lists the number of chiral outliers, the number of chiral centers analysed, the number of these observed in the model and the number defined in the chemical component dictionary. Similar counts are reported in the Torsion and Rings columns. '-' means no outliers of that kind were identified.

Mol	Type	Chain	Res	Link	Chirals	Torsions	Rings
5	CAM	A	1422	-	-	0/0/31/31	0/0/2/2
3	HEM	A	417	1,4	-	0/10/54/54	0/0/8/8
4	OXY	A	420	3	-	0/0/0/0	0/0/0/0
5	CAM	B	2422	-	-	0/0/31/31	0/0/2/2
6	TRS	B	2430	-	-	0/9/9/9	0/0/0/0
3	HEM	B	417	1,4	-	0/10/54/54	0/0/8/8
4	OXY	B	420	3	-	0/0/0/0	0/0/0/0

All (28) bond length outliers are listed below:

Mol	Chain	Res	Type	Atoms	Z	Observed(Å)	Ideal(Å)
3	A	417	HEM	C3B-C4B	-6.69	1.45	1.51
3	A	417	HEM	C2D-C3D	-6.67	1.34	1.54
3	B	417	HEM	C3B-C4B	-6.27	1.46	1.51
3	B	417	HEM	C3C-CAC	-6.22	1.39	1.51
3	A	417	HEM	C3B-CAB	-6.11	1.39	1.51
3	B	417	HEM	C2D-C3D	-5.94	1.36	1.54
3	A	417	HEM	C3C-CAC	-5.65	1.40	1.51
3	B	417	HEM	C3B-CAB	-5.34	1.41	1.51
3	B	417	HEM	C3D-C4D	-5.27	1.44	1.51
3	A	417	HEM	C3D-C4D	-4.57	1.45	1.51
3	B	417	HEM	C2C-C1C	-4.22	1.44	1.52

Continued on next page...

Continued from previous page...

Mol	Chain	Res	Type	Atoms	Z	Observed(Å)	Ideal(Å)
3	A	417	HEM	C2C-C1C	-2.99	1.46	1.52
3	A	417	HEM	C2B-C1B	-2.15	1.44	1.51
3	B	417	HEM	CHD-C4C	2.12	1.41	1.36
5	A	1422	CAM	C8-C7	2.55	1.61	1.53
3	A	417	HEM	C1C-NC	2.58	1.39	1.36
5	B	2422	CAM	C8-C7	2.64	1.61	1.53
5	A	1422	CAM	C3-C4	2.69	1.60	1.53
3	A	417	HEM	C4C-NC	2.81	1.39	1.36
6	B	2430	TRS	O1-C1	2.82	1.51	1.42
6	B	2430	TRS	O2-C2	2.85	1.51	1.42
5	A	1422	CAM	C1-C2	2.88	1.56	1.53
5	B	2422	CAM	C3-C4	2.90	1.61	1.53
6	B	2430	TRS	O3-C3	3.01	1.52	1.42
5	B	2422	CAM	C1-C2	3.02	1.57	1.53
5	A	1422	CAM	C5-C4	3.34	1.62	1.53
3	B	417	HEM	C4C-NC	3.42	1.40	1.36
5	B	2422	CAM	C5-C4	3.60	1.63	1.53

All (30) bond angle outliers are listed below:

Mol	Chain	Res	Type	Atoms	Z	Observed(°)	Ideal(°)
6	B	2430	TRS	C3-C-C2	-5.19	99.54	110.78
5	A	1422	CAM	C4-C3-C2	-4.59	93.97	101.96
5	B	2422	CAM	C4-C3-C2	-4.50	94.13	101.96
6	B	2430	TRS	C2-C-C1	-3.48	103.25	110.78
5	A	1422	CAM	C5-C6-C1	-3.15	97.99	104.72
5	B	2422	CAM	C5-C6-C1	-3.09	98.12	104.72
6	B	2430	TRS	O2-C2-C	-2.49	106.14	111.18
3	B	417	HEM	CAA-C2A-C1A	-2.17	124.65	127.01
3	A	417	HEM	CMA-C3A-C4A	-2.17	124.78	128.36
5	B	2422	CAM	C9-C7-C1	2.08	118.10	113.01
5	A	1422	CAM	C9-C7-C1	2.13	118.22	113.01
3	B	417	HEM	C2D-C3D-C4D	2.63	105.95	101.50
5	B	2422	CAM	C6-C1-C7	2.63	107.62	101.61
5	A	1422	CAM	C6-C1-C7	2.71	107.81	101.61
3	B	417	HEM	CMD-C2D-C3D	2.78	126.64	114.35
3	A	417	HEM	CMD-C2D-C3D	2.87	127.04	114.35
5	B	2422	CAM	C3-C4-C7	2.93	109.20	102.73
5	A	1422	CAM	C3-C4-C7	2.94	109.23	102.73
6	B	2430	TRS	C3-C-C1	3.02	117.32	110.78
3	A	417	HEM	C3B-CAB-CBB	3.17	129.32	124.46
3	A	417	HEM	CMC-C2C-C3C	3.41	125.04	116.53

Continued on next page...

Continued from previous page...

Mol	Chain	Res	Type	Atoms	Z	Observed($^{\circ}$)	Ideal($^{\circ}$)
3	A	417	HEM	C2D-C3D-C4D	3.49	107.41	101.50
3	A	417	HEM	CAD-C3D-C4D	3.71	125.56	112.47
3	B	417	HEM	CAD-C3D-C4D	3.79	125.82	112.47
3	B	417	HEM	CMB-C2B-C3B	3.95	126.39	116.53
3	B	417	HEM	CMC-C2C-C3C	4.09	126.73	116.53
3	A	417	HEM	CMB-C2B-C3B	4.29	127.25	116.53
3	A	417	HEM	CAD-C3D-C2D	4.78	126.95	113.22
3	B	417	HEM	CAD-C3D-C2D	5.17	128.09	113.22
6	B	2430	TRS	C3-C-N	6.25	119.47	108.09

There are no chirality outliers.

There are no torsion outliers.

There are no ring outliers.

3 monomers are involved in 2 short contacts:

Mol	Chain	Res	Type	Clashes	Symm-Clashes
5	A	1422	CAM	1	0
3	A	417	HEM	1	0
4	A	420	OXY	1	0

5.7 Other polymers [i](#)

There are no such residues in this entry.

5.8 Polymer linkage issues [i](#)

There are no chain breaks in this entry.

6 Fit of model and data [i](#)

6.1 Protein, DNA and RNA chains [i](#)

In the following table, the column labelled ‘#RSRZ> 2’ contains the number (and percentage) of RSRZ outliers, followed by percent RSRZ outliers for the chain as percentile scores relative to all X-ray entries and entries of similar resolution. The OWAB column contains the minimum, median, 95th percentile and maximum values of the occupancy-weighted average B-factor per residue. The column labelled ‘Q< 0.9’ lists the number of (and percentage) of residues with an average occupancy less than 0.9.

Mol	Chain	Analysed	<RSRZ>	#RSRZ>2	OWAB(Å ²)	Q<0.9
1	A	405/415 (97%)	-0.25	1 (0%) 95 96	9, 17, 32, 48	0
1	B	405/415 (97%)	-0.06	3 (0%) 89 91	12, 20, 40, 54	0
All	All	810/830 (97%)	-0.15	4 (0%) 91 93	9, 19, 38, 54	0

All (4) RSRZ outliers are listed below:

Mol	Chain	Res	Type	RSRZ
1	B	309	GLY	3.2
1	B	22	LEU	2.1
1	B	20	GLU	2.0
1	A	414	VAL	2.0

6.2 Non-standard residues in protein, DNA, RNA chains [i](#)

There are no non-standard protein/DNA/RNA residues in this entry.

6.3 Carbohydrates [i](#)

There are no carbohydrates in this entry.

6.4 Ligands [i](#)

In the following table, the Atoms column lists the number of modelled atoms in the group and the number defined in the chemical component dictionary. LLDF column lists the quality of electron density of the group with respect to its neighbouring residues in protein, DNA or RNA chains. The B-factors column lists the minimum, median, 95th percentile and maximum values of B factors of atoms in the group. The column labelled ‘Q< 0.9’ lists the number of atoms with occupancy less than 0.9.

Mol	Type	Chain	Res	Atoms	RSCC	RSR	LLDF	B-factors(\AA^2)	Q<0.9
6	TRS	B	2430	8/8	0.92	0.14	3.88	16,18,20,32	0
2	K	A	1515	1/1	0.97	0.11	0.72	17,17,17,17	0
5	CAM	B	2422	11/11	0.91	0.12	0.31	10,16,18,19	0
5	CAM	A	1422	11/11	0.95	0.11	0.15	10,12,15,16	0
3	HEM	B	417	43/43	0.97	0.10	-0.34	8,14,18,19	0
3	HEM	A	417	43/43	0.98	0.09	-1.00	6,11,14,15	0
2	K	B	2515	1/1	0.96	0.08	-1.13	24,24,24,24	0
2	K	A	1715	1/1	0.99	0.09	-1.14	24,24,24,24	0
4	OXY	B	420	2/2	0.98	0.08	-	16,16,16,23	0
4	OXY	A	420	2/2	0.96	0.19	-	17,17,17,21	0

6.5 Other polymers [i](#)

There are no such residues in this entry.