



# Full wwPDB X-ray Structure Validation Report ⓘ

Feb 1, 2016 – 02:43 PM GMT

PDB ID : 4AA5  
Title : P38ALPHA MAP KINASE BOUND TO CMPD 33  
Authors : Gerhardt, S.; Hargreaves, D.  
Deposited on : 2011-11-30  
Resolution : 2.38 Å(reported)

This is a Full wwPDB X-ray Structure Validation Report for a publicly released PDB entry.  
We welcome your comments at [validation@mail.wwpdb.org](mailto:validation@mail.wwpdb.org)  
A user guide is available at  
<http://wwpdb.org/validation/2016/XrayValidationReportHelp>  
with specific help available everywhere you see the ⓘ symbol.

---

The following versions of software and data (see [references ⓘ](#)) were used in the production of this report:

MolProbity : 4.02b-467  
Mogul : 1.7 (RC4), CSD as536be (2015)  
Xtriage (Phenix) : 1.9-1692  
EDS : rb-20026688  
Percentile statistics : 20151230.v01 (using entries in the PDB archive December 30th 2015)  
Refmac : 5.8.0135  
CCP4 : 6.5.0  
Ideal geometry (proteins) : Engh & Huber (2001)  
Ideal geometry (DNA, RNA) : Parkinson et al. (1996)  
Validation Pipeline (wwPDB-VP) : trunk26865

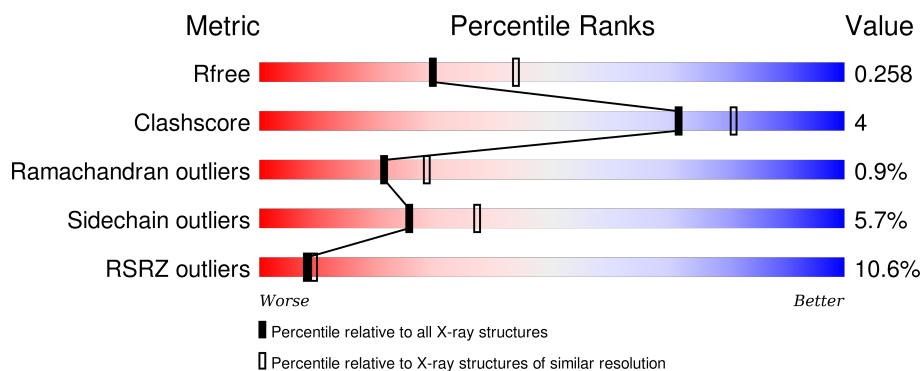
# 1 Overall quality at a glance

The following experimental techniques were used to determine the structure:

## *X-RAY DIFFRACTION*

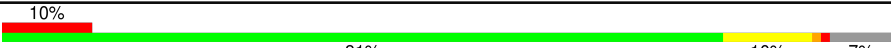
The reported resolution of this entry is 2.38 Å.

Percentile scores (ranging between 0-100) for global validation metrics of the entry are shown in the following graphic. The table shows the number of entries on which the scores are based.



Metric	Whole archive (#Entries)	Similar resolution (#Entries, resolution range(Å))
$R_{free}$	91344	4019 (2.40-2.36)
Clashscore	102246	4595 (2.40-2.36)
Ramachandran outliers	100387	4520 (2.40-2.36)
Sidechain outliers	100360	4522 (2.40-2.36)
RSRZ outliers	91569	4034 (2.40-2.36)

The table below summarises the geometric issues observed across the polymeric chains and their fit to the electron density. The red, orange, yellow and green segments on the lower bar indicate the fraction of residues that contain outliers for  $\geq 3$ , 2, 1 and 0 types of geometric quality criteria. A grey segment represents the fraction of residues that are not modelled. The numeric value for each fraction is indicated below the corresponding segment, with a dot representing fractions  $\leq 5\%$ . The upper red bar (where present) indicates the fraction of residues that have poor fit to the electron density. The numeric value is given above the bar.

Mol	Chain	Length	Quality of chain
1	A	365	

## 2 Entry composition [i](#)

There are 3 unique types of molecules in this entry. The entry contains 2803 atoms, of which 0 are hydrogens and 0 are deuteriums.

In the tables below, the ZeroOcc column contains the number of atoms modelled with zero occupancy, the AltConf column contains the number of residues with at least one atom in alternate conformation and the Trace column contains the number of residues modelled with at most 2 atoms.

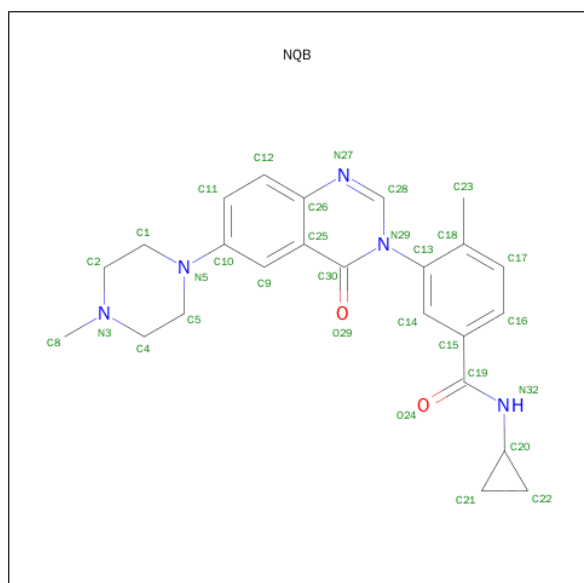
- Molecule 1 is a protein called MITOGEN-ACTIVATED PROTEIN KINASE 14.

Mol	Chain	Residues	Atoms					ZeroOcc	AltConf	Trace
			Total	C	N	O	S			
1	A	341	2751	1765	470	503	13	0	0	0

There are 6 discrepancies between the modelled and reference sequences:

Chain	Residue	Modelled	Actual	Comment	Reference
A	-4	HIS	-	EXPRESSION TAG	UNP Q16539
A	-3	HIS	-	EXPRESSION TAG	UNP Q16539
A	-2	HIS	-	EXPRESSION TAG	UNP Q16539
A	-1	HIS	-	EXPRESSION TAG	UNP Q16539
A	0	HIS	-	EXPRESSION TAG	UNP Q16539
A	1	HIS	-	EXPRESSION TAG	UNP Q16539

- Molecule 2 is N-CYCLOPROPYL-4-METHYL-3-[6-(4-METHYLPIPERAZIN-1-YL)-4-OXIDANYLIDENE-QUINAZOLIN-3-YL]BENZAMIDE (three-letter code: NQB) (formula:  $C_{24}H_{27}N_5O_2$ ).



Mol	Chain	Residues	Atoms				ZeroOcc	AltConf
2	A	1	Total	C	N	O	0	0
			31	24	5	2		

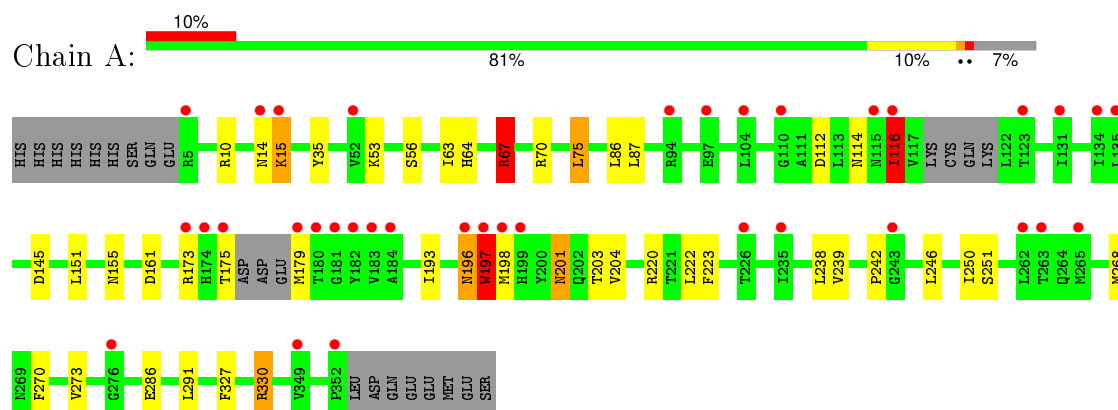
- Molecule 3 is water.

Mol	Chain	Residues	Atoms		ZeroOcc	AltConf
3	A	21	Total	O	0	0
			21	21		

### 3 Residue-property plots

These plots are drawn for all protein, RNA and DNA chains in the entry. The first graphic for a chain summarises the proportions of errors displayed in the second graphic. The second graphic shows the sequence view annotated by issues in geometry and electron density. Residues are color-coded according to the number of geometric quality criteria for which they contain at least one outlier: green = 0, yellow = 1, orange = 2 and red = 3 or more. A red dot above a residue indicates a poor fit to the electron density ( $RSRZ > 2$ ). Stretches of 2 or more consecutive residues without any outlier are shown as a green connector. Residues present in the sample, but not in the model, are shown in grey.

- Molecule 1: MITOGEN-ACTIVATED PROTEIN KINASE 14



## 4 Data and refinement statistics

Property	Value	Source
Space group	P 21 21 21	Depositor
Cell constants a, b, c, $\alpha$ , $\beta$ , $\gamma$	64.48Å 74.65Å 76.40Å 90.00° 90.00° 90.00°	Depositor
Resolution (Å)	19.32 – 2.38 19.30 – 2.38	Depositor EDS
% Data completeness (in resolution range)	94.0 (19.32-2.38) 94.3 (19.30-2.38)	Depositor EDS
$R_{merge}$	0.05	Depositor
$R_{sym}$	(Not available)	Depositor
$\langle I/\sigma(I) \rangle$ <sup>1</sup>	5.66 (at 2.38Å)	Xtriage
Refinement program	REFMAC 5.6.0113	Depositor
R, $R_{free}$	0.216 , 0.260 0.215 , 0.258	Depositor DCC
$R_{free}$ test set	731 reflections (5.34%)	DCC
Wilson B-factor (Å <sup>2</sup> )	34.4	Xtriage
Anisotropy	0.570	Xtriage
Bulk solvent $k_{sol}$ (e/Å <sup>3</sup> ), $B_{sol}$ (Å <sup>2</sup> )	0.38 , 30.6	EDS
Estimated twinning fraction	0.027 for -h,l,k	Xtriage
L-test for twinning <sup>2</sup>	$\langle  L  \rangle = 0.47$ , $\langle L^2 \rangle = 0.30$	Xtriage
Outliers	0 of 14550 reflections	Xtriage
$F_o, F_c$ correlation	0.93	EDS
Total number of atoms	2803	wwPDB-VP
Average B, all atoms (Å <sup>2</sup> )	34.0	wwPDB-VP

Xtriage's analysis on translational NCS is as follows: *The largest off-origin peak in the Patterson function is 5.11% of the height of the origin peak. No significant pseudotranslation is detected.*

<sup>1</sup>Intensities estimated from amplitudes.

<sup>2</sup>Theoretical values of  $\langle |L| \rangle$ ,  $\langle L^2 \rangle$  for acentric reflections are 0.5, 0.375 respectively for untwinned datasets, and 0.333, 0.2 for perfectly twinned datasets.

## 5 Model quality [i](#)

### 5.1 Standard geometry [i](#)

Bond lengths and bond angles in the following residue types are not validated in this section: NQB, CSS

The Z score for a bond length (or angle) is the number of standard deviations the observed value is removed from the expected value. A bond length (or angle) with  $|Z| > 5$  is considered an outlier worth inspection. RMSZ is the root-mean-square of all Z scores of the bond lengths (or angles).

Mol	Chain	Bond lengths		Bond angles	
		RMSZ	$\# Z  > 5$	RMSZ	$\# Z  > 5$
1	A	0.73	1/2807 (0.0%)	0.74	4/3810 (0.1%)

All (1) bond length outliers are listed below:

Mol	Chain	Res	Type	Atoms	Z	Observed(Å)	Ideal(Å)
1	A	197	TRP	CD2-CE2	6.02	1.48	1.41

All (4) bond angle outliers are listed below:

Mol	Chain	Res	Type	Atoms	Z	Observed(°)	Ideal(°)
1	A	67	ARG	NE-CZ-NH1	6.04	123.32	120.30
1	A	70	ARG	NE-CZ-NH2	-5.83	117.38	120.30
1	A	220	ARG	NE-CZ-NH2	-5.42	117.59	120.30
1	A	145	ASP	CB-CG-OD2	5.25	123.02	118.30

There are no chirality outliers.

There are no planarity outliers.

### 5.2 Too-close contacts [i](#)

In the following table, the Non-H and H(model) columns list the number of non-hydrogen atoms and hydrogen atoms in the chain respectively. The H(added) column lists the number of hydrogen atoms added and optimized by MolProbity. The Clashes column lists the number of clashes within the asymmetric unit, whereas Symm-Clashes lists symmetry related clashes.

Mol	Chain	Non-H	H(model)	H(added)	Clashes	Symm-Clashes
1	A	2751	0	2744	24	0
2	A	31	0	27	2	0
3	A	21	0	0	0	0

*Continued on next page...*

*Continued from previous page...*

Mol	Chain	Non-H	H(model)	H(added)	Clashes	Symm-Clashes
All	All	2803	0	2771	24	0

The all-atom clashscore is defined as the number of clashes found per 1000 atoms (including hydrogen atoms). The all-atom clashscore for this structure is 4.

All (24) close contacts within the same asymmetric unit are listed below, sorted by their clash magnitude.

Atom-1	Atom-2	Interatomic distance (Å)	Clash overlap (Å)
1:A:14:ASN:O	1:A:15:LYS:HB2	1.93	0.67
1:A:64:HIS:HA	1:A:67:ARG:HD2	1.78	0.66
1:A:242:PRO:HB3	1:A:246:LEU:HD23	1.77	0.66
1:A:201:ASN:HD22	1:A:203:THR:H	1.52	0.57
1:A:35:TYR:CE2	1:A:67:ARG:HG3	2.40	0.56
1:A:197:TRP:O	1:A:250:ILE:HG23	2.05	0.56
1:A:239:VAL:HG21	1:A:291:LEU:HG	1.89	0.53
1:A:327:PHE:HA	1:A:330:ARG:HG3	1.91	0.52
1:A:14:ASN:O	1:A:15:LYS:CB	2.57	0.52
1:A:201:ASN:ND2	1:A:203:THR:OG1	2.41	0.52
1:A:53:LYS:HB2	2:A:1353:NQB:H233	1.90	0.52
1:A:75:LEU:HD13	2:A:1353:NQB:H212	1.91	0.52
1:A:201:ASN:HD22	1:A:201:ASN:C	2.17	0.48
1:A:222:LEU:HD23	1:A:223:PHE:CE2	2.49	0.47
1:A:75:LEU:HB3	1:A:86:LEU:HB2	1.97	0.47
1:A:63:ILE:O	1:A:67:ARG:HB3	2.15	0.46
1:A:270:PHE:HB2	1:A:286:GLU:OE1	2.16	0.46
1:A:238:LEU:HD12	1:A:268:MET:HE3	1.98	0.45
1:A:201:ASN:ND2	1:A:203:THR:H	2.14	0.42
1:A:112:ASP:OD1	1:A:114:ASN:HB3	2.20	0.42
1:A:268:MET:HE3	1:A:273:VAL:HG21	2.03	0.41
1:A:116:ILE:HD12	1:A:116:ILE:HA	1.93	0.41
1:A:197:TRP:HD1	1:A:198:MET:N	2.18	0.40
1:A:193:ILE:HG21	1:A:204:VAL:HG11	2.02	0.40

There are no symmetry-related clashes.



## 5.3 Torsion angles [i](#)

### 5.3.1 Protein backbone [i](#)

In the following table, the Percentiles column shows the percent Ramachandran outliers of the chain as a percentile score with respect to all X-ray entries followed by that with respect to entries of similar resolution.

The Analysed column shows the number of residues for which the backbone conformation was analysed, and the total number of residues.

Mol	Chain	Analysed	Favoured	Allowed	Outliers	Percentiles	
1	A	334/365 (92%)	323 (97%)	8 (2%)	3 (1%)	21	28

All (3) Ramachandran outliers are listed below:

Mol	Chain	Res	Type
1	A	15	LYS
1	A	196	ASN
1	A	116	ILE

### 5.3.2 Protein sidechains [i](#)

In the following table, the Percentiles column shows the percent sidechain outliers of the chain as a percentile score with respect to all X-ray entries followed by that with respect to entries of similar resolution.

The Analysed column shows the number of residues for which the sidechain conformation was analysed, and the total number of residues.

Mol	Chain	Analysed	Rotameric	Outliers	Percentiles	
1	A	300/324 (93%)	283 (94%)	17 (6%)	25	37

All (17) residues with a non-rotameric sidechain are listed below:

Mol	Chain	Res	Type
1	A	10	ARG
1	A	56	SER
1	A	67	ARG
1	A	75	LEU
1	A	87	LEU
1	A	116	ILE
1	A	151	LEU
1	A	155	ASN

*Continued on next page...*

*Continued from previous page...*

Mol	Chain	Res	Type
1	A	161	ASP
1	A	173	ARG
1	A	175	THR
1	A	179	MET
1	A	196	ASN
1	A	197	TRP
1	A	201	ASN
1	A	251	SER
1	A	330	ARG

Some sidechains can be flipped to improve hydrogen bonding and reduce clashes. All (5) such sidechains are listed below:

Mol	Chain	Res	Type
1	A	11	GLN
1	A	155	ASN
1	A	201	ASN
1	A	202	GLN
1	A	272	ASN

### 5.3.3 RNA ⓘ

There are no RNA molecules in this entry.

## 5.4 Non-standard residues in protein, DNA, RNA chains ⓘ

1 non-standard protein/DNA/RNA residue is modelled in this entry.

In the following table, the Counts columns list the number of bonds (or angles) for which Mogul statistics could be retrieved, the number of bonds (or angles) that are observed in the model and the number of bonds (or angles) that are defined in the chemical component dictionary. The Link column lists molecule types, if any, to which the group is linked. The Z score for a bond length (or angle) is the number of standard deviations the observed value is removed from the expected value. A bond length (or angle) with  $|Z| > 2$  is considered an outlier worth inspection. RMSZ is the root-mean-square of all Z scores of the bond lengths (or angles).

Mol	Type	Chain	Res	Link	Bond lengths			Bond angles		
					Counts	RMSZ	$\# Z  > 2$	Counts	RMSZ	$\# Z  > 2$
1	CSS	A	162	1	4,6,7	0.46	0	3,6,8	1.34	1 (33%)

In the following table, the Chirals column lists the number of chiral outliers, the number of chiral centers analysed, the number of these observed in the model and the number defined in the chemical

component dictionary. Similar counts are reported in the Torsion and Rings columns. '-' means no outliers of that kind were identified.

Mol	Type	Chain	Res	Link	Chirals	Torsions	Rings
1	CSS	A	162	1	-	0/1/5/7	0/0/0/0

There are no bond length outliers.

All (1) bond angle outliers are listed below:

Mol	Chain	Res	Type	Atoms	Z	Observed( $^{\circ}$ )	Ideal( $^{\circ}$ )
1	A	162	CSS	O-C-CA	-2.29	119.53	125.49

There are no chirality outliers.

There are no torsion outliers.

There are no ring outliers.

No monomer is involved in short contacts.

## 5.5 Carbohydrates [i](#)

There are no carbohydrates in this entry.

## 5.6 Ligand geometry [i](#)

1 ligand is modelled in this entry.

In the following table, the Counts columns list the number of bonds (or angles) for which Mogul statistics could be retrieved, the number of bonds (or angles) that are observed in the model and the number of bonds (or angles) that are defined in the chemical component dictionary. The Link column lists molecule types, if any, to which the group is linked. The Z score for a bond length (or angle) is the number of standard deviations the observed value is removed from the expected value. A bond length (or angle) with  $|Z| > 2$  is considered an outlier worth inspection. RMSZ is the root-mean-square of all Z scores of the bond lengths (or angles).

Mol	Type	Chain	Res	Link	Bond lengths			Bond angles		
					Counts	RMSZ	$\# Z  > 2$	Counts	RMSZ	$\# Z  > 2$
2	NQB	A	1353	-	33,35,35	1.59	5 (15%)	43,51,51	1.68	9 (20%)

In the following table, the Chirals column lists the number of chiral outliers, the number of chiral centers analysed, the number of these observed in the model and the number defined in the chemical component dictionary. Similar counts are reported in the Torsion and Rings columns. '-' means no outliers of that kind were identified.

Mol	Type	Chain	Res	Link	Chirals	Torsions	Rings
2	NQB	A	1353	-	-	0/16/28/28	0/4/5/5

All (5) bond length outliers are listed below:

Mol	Chain	Res	Type	Atoms	Z	Observed(Å)	Ideal(Å)
2	A	1353	NQB	C10-N5	2.07	1.44	1.38
2	A	1353	NQB	C16-C15	2.11	1.42	1.39
2	A	1353	NQB	C5-N5	2.53	1.50	1.46
2	A	1353	NQB	C1-N5	3.50	1.52	1.46
2	A	1353	NQB	C30-C25	4.63	1.49	1.41

All (9) bond angle outliers are listed below:

Mol	Chain	Res	Type	Atoms	Z	Observed(°)	Ideal(°)
2	A	1353	NQB	O24-C19-C15	-3.03	115.79	120.97
2	A	1353	NQB	C9-C25-C26	2.26	120.84	118.14
2	A	1353	NQB	C15-C19-N32	2.39	121.19	116.93
2	A	1353	NQB	C2-C1-N5	2.43	115.45	110.63
2	A	1353	NQB	C8-N3-C2	2.64	114.75	110.63
2	A	1353	NQB	C5-N5-C1	3.40	118.74	111.59
2	A	1353	NQB	C4-C5-N5	3.62	117.80	110.63
2	A	1353	NQB	C20-N32-C19	3.82	127.29	122.52
2	A	1353	NQB	C5-C4-N3	4.76	115.82	110.79

There are no chirality outliers.

There are no torsion outliers.

There are no ring outliers.

1 monomer is involved in 2 short contacts:

Mol	Chain	Res	Type	Clashes	Symm-Clashes
2	A	1353	NQB	2	0

## 5.7 Other polymers [i](#)

There are no such residues in this entry.

## 5.8 Polymer linkage issues [i](#)

There are no chain breaks in this entry.

## 6 Fit of model and data ⓘ

### 6.1 Protein, DNA and RNA chains ⓘ

In the following table, the column labelled ‘#RSRZ> 2’ contains the number (and percentage) of RSRZ outliers, followed by percent RSRZ outliers for the chain as percentile scores relative to all X-ray entries and entries of similar resolution. The OWAB column contains the minimum, median, 95<sup>th</sup> percentile and maximum values of the occupancy-weighted average B-factor per residue. The column labelled ‘Q< 0.9’ lists the number of (and percentage) of residues with an average occupancy less than 0.9.

Mol	Chain	Analysed	<RSRZ>	#RSRZ>2	OWAB(Å <sup>2</sup> )	Q<0.9
1	A	340/365 (93%)	0.58	36 (10%) 8 9	21, 33, 50, 64	0

All (36) RSRZ outliers are listed below:

Mol	Chain	Res	Type	RSRZ
1	A	14	ASN	6.6
1	A	352	PRO	6.0
1	A	183	VAL	4.9
1	A	174	HIS	4.6
1	A	5	ARG	4.3
1	A	94	ARG	3.9
1	A	263	THR	3.9
1	A	175	THR	3.6
1	A	197	TRP	3.6
1	A	262	LEU	3.5
1	A	179	MET	3.3
1	A	199	HIS	3.1
1	A	181	GLY	3.1
1	A	265	MET	3.0
1	A	226	THR	3.0
1	A	184	ALA	2.7
1	A	196	ASN	2.7
1	A	52	VAL	2.7
1	A	104	LEU	2.7
1	A	135	LEU	2.6
1	A	15	LYS	2.6
1	A	115	ASN	2.6
1	A	123	THR	2.5
1	A	198	MET	2.5
1	A	131	ILE	2.5
1	A	276	GLY	2.3
1	A	349	VAL	2.3

*Continued on next page...*

*Continued from previous page...*

Mol	Chain	Res	Type	RSRZ
1	A	110	GLY	2.3
1	A	116	ILE	2.2
1	A	243	GLY	2.2
1	A	180	THR	2.1
1	A	182	TYR	2.1
1	A	97	GLU	2.0
1	A	235	ILE	2.0
1	A	134	ILE	2.0
1	A	173	ARG	2.0

## 6.2 Non-standard residues in protein, DNA, RNA chains [i](#)

In the following table, the Atoms column lists the number of modelled atoms in the group and the number defined in the chemical component dictionary. LLDF column lists the quality of electron density of the group with respect to its neighbouring residues in protein, DNA or RNA chains. The B-factors column lists the minimum, median, 95<sup>th</sup> percentile and maximum values of B factors of atoms in the group. The column labelled 'Q< 0.9' lists the number of atoms with occupancy less than 0.9.

Mol	Type	Chain	Res	Atoms	RSCC	RSR	LLDF	B-factors(Å <sup>2</sup> )	Q<0.9
1	CSS	A	162	7/8	0.96	0.16	-	30,34,38,39	0

## 6.3 Carbohydrates [i](#)

There are no carbohydrates in this entry.

## 6.4 Ligands [i](#)

In the following table, the Atoms column lists the number of modelled atoms in the group and the number defined in the chemical component dictionary. LLDF column lists the quality of electron density of the group with respect to its neighbouring residues in protein, DNA or RNA chains. The B-factors column lists the minimum, median, 95<sup>th</sup> percentile and maximum values of B factors of atoms in the group. The column labelled 'Q< 0.9' lists the number of atoms with occupancy less than 0.9.

Mol	Type	Chain	Res	Atoms	RSCC	RSR	LLDF	B-factors(Å <sup>2</sup> )	Q<0.9
2	NQB	A	1353	31/31	0.91	0.17	0.19	21,26,29,31	0

## 6.5 Other polymers [i](#)

There are no such residues in this entry.