



Full wwPDB X-ray Structure Validation Report ⓘ

Feb 19, 2016 – 07:01 PM GMT

PDB ID : 2ABB
Title : Structure of PETN reductase Y186F in complex with cyanide
Authors : Khan, H.; Barna, T.; Bruce, N.C.; Munro, A.W.; Leys, D.; Scrutton, N.S.
Deposited on : 2005-07-15
Resolution : 1.00 Å(reported)

This is a Full wwPDB X-ray Structure Validation Report for a publicly released PDB entry.
We welcome your comments at validation@mail.wwpdb.org
A user guide is available at
<http://wwpdb.org/validation/2016/XrayValidationReportHelp>
with specific help available everywhere you see the ⓘ symbol.

The following versions of software and data (see [references ⓘ](#)) were used in the production of this report:

MolProbity : 4.02b-467
Mogul : 1.7.1 (RC1), CSD as537be (2016)
Xtriage (Phenix) : 1.9-1692
EDS : rb-20026982
Percentile statistics : 20151230.v01 (using entries in the PDB archive December 30th 2015)
Refmac : 5.8.0135
CCP4 : 6.5.0
Ideal geometry (proteins) : Engh & Huber (2001)
Ideal geometry (DNA, RNA) : Parkinson et al. (1996)
Validation Pipeline (wwPDB-VP) : rb-20026982

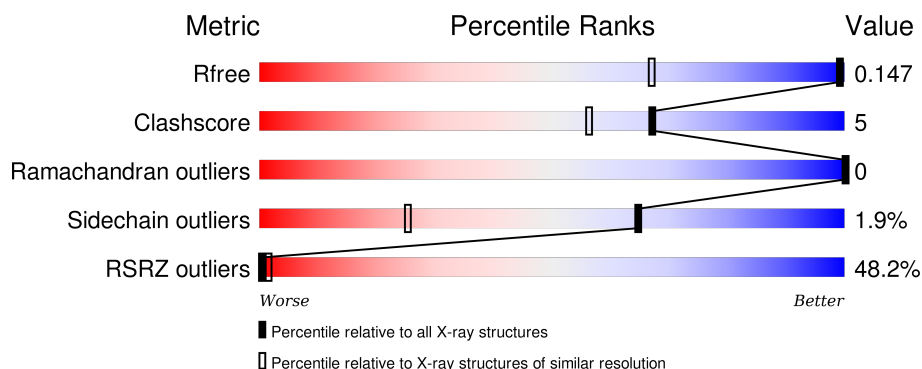
1 Overall quality at a glance

The following experimental techniques were used to determine the structure:

X-RAY DIFFRACTION

The reported resolution of this entry is 1.00 Å.

Percentile scores (ranging between 0-100) for global validation metrics of the entry are shown in the following graphic. The table shows the number of entries on which the scores are based.



Metric	Whole archive (#Entries)	Similar resolution (#Entries, resolution range(Å))
R_{free}	91344	1235 (1.10-0.90)
Clashscore	102246	1333 (1.10-0.90)
Ramachandran outliers	100387	1247 (1.10-0.90)
Sidechain outliers	100360	1246 (1.10-0.90)
RSRZ outliers	91569	1239 (1.10-0.90)

The table below summarises the geometric issues observed across the polymeric chains and their fit to the electron density. The red, orange, yellow and green segments on the lower bar indicate the fraction of residues that contain outliers for ≥ 3 , 2, 1 and 0 types of geometric quality criteria. A grey segment represents the fraction of residues that are not modelled. The numeric value for each fraction is indicated below the corresponding segment, with a dot representing fractions $\leq 5\%$. The upper red bar (where present) indicates the fraction of residues that have poor fit to the electron density. The numeric value is given above the bar.

Mol	Chain	Length	Quality of chain
1	A	364	

2 Entry composition [i](#)

There are 5 unique types of molecules in this entry. The entry contains 3500 atoms, of which 0 are hydrogens and 0 are deuteriums.

In the tables below, the ZeroOcc column contains the number of atoms modelled with zero occupancy, the AltConf column contains the number of residues with at least one atom in alternate conformation and the Trace column contains the number of residues modelled with at most 2 atoms.

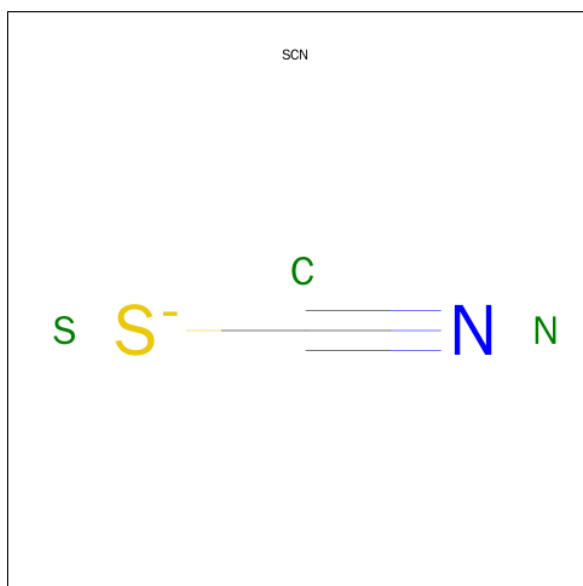
- Molecule 1 is a protein called pentaerythritol tetranitrate reductase.

Mol	Chain	Residues	Atoms					ZeroOcc	AltConf	Trace
1	A	361	Total	C	N	O	S	0	20	0
			2800	1766	495	534	5			

There is a discrepancy between the modelled and reference sequences:

Chain	Residue	Modelled	Actual	Comment	Reference
A	186	PHE	TYR	ENGINEERED	UNP P71278

- Molecule 2 is THIOCYANATE ION (three-letter code: SCN) (formula: CNS).



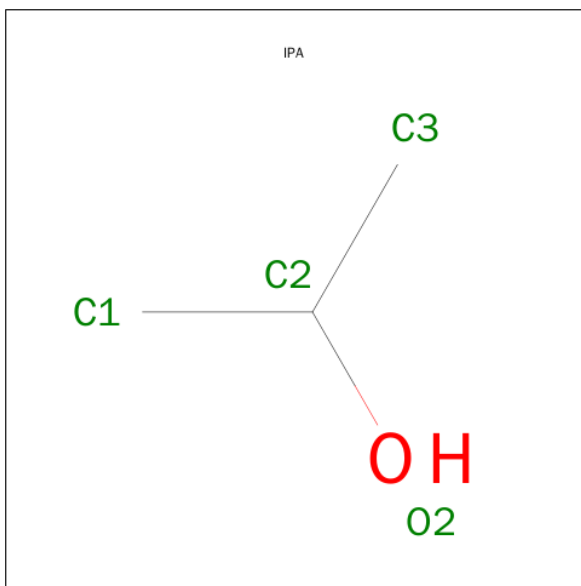
Mol	Chain	Residues	Atoms				ZeroOcc	AltConf
2	A	1	Total	C	N	S	0	0
			3	1	1	1		

- Molecule 3 is FLAVIN MONONUCLEOTIDE (three-letter code: FMN) (formula: C₁₇H₂₁N₄O₉P).



Mol	Chain	Residues	Atoms				ZeroOcc	AltConf
3	A	1	Total	C	N	O	P	
			37	20	4	12	1	

- Molecule 4 is ISOPROPYL ALCOHOL (three-letter code: IPA) (formula: C_3H_8O).



Mol	Chain	Residues	Atoms			ZeroOcc	AltConf
4	A	1	Total	C	O		
			4	3	1		

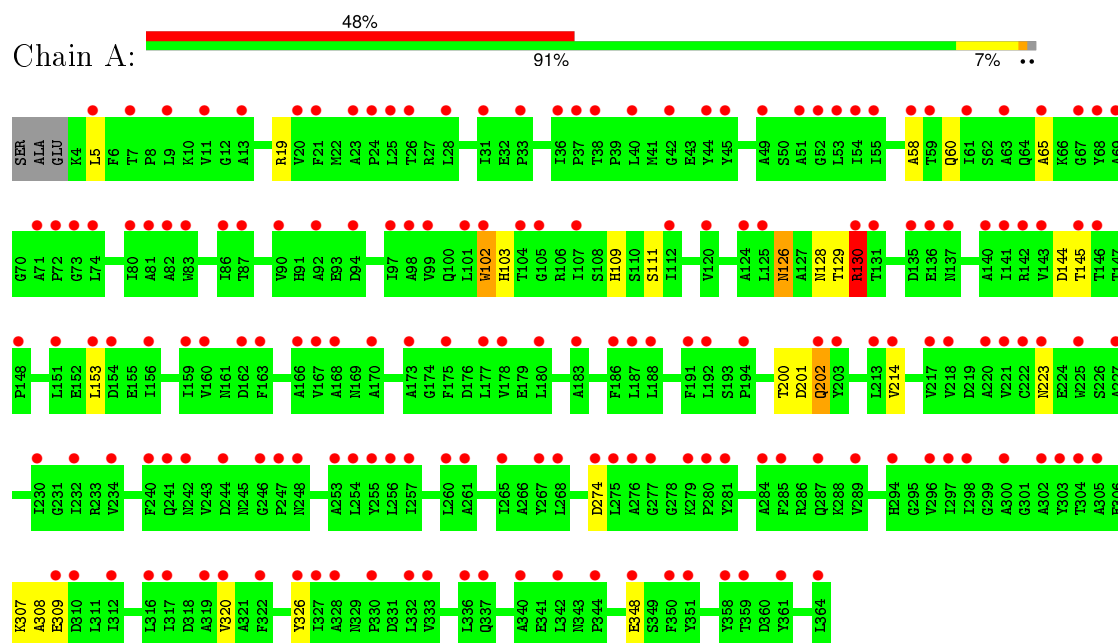
- Molecule 5 is water.

Mol	Chain	Residues	Atoms		ZeroOcc	AltConf
5	A	656	Total 656	O 656	0	0

3 Residue-property plots [i](#)

These plots are drawn for all protein, RNA and DNA chains in the entry. The first graphic for a chain summarises the proportions of errors displayed in the second graphic. The second graphic shows the sequence view annotated by issues in geometry and electron density. Residues are color-coded according to the number of geometric quality criteria for which they contain at least one outlier: green = 0, yellow = 1, orange = 2 and red = 3 or more. A red dot above a residue indicates a poor fit to the electron density ($\text{RSRZ} > 2$). Stretches of 2 or more consecutive residues without any outlier are shown as a green connector. Residues present in the sample, but not in the model, are shown in grey.

- Molecule 1: pentaerythritol tetranitrate reductase



4 Data and refinement statistics

Property	Value	Source
Space group	P 21 21 21	Depositor
Cell constants a, b, c, α , β , γ	56.62Å 68.66Å 88.60Å 90.00° 90.00° 90.00°	Depositor
Resolution (Å)	14.37 – 1.00 14.37 – 1.00	Depositor EDS
% Data completeness (in resolution range)	98.2 (14.37-1.00) 95.6 (14.37-1.00)	Depositor EDS
R_{merge}	0.09	Depositor
R_{sym}	(Not available)	Depositor
$\langle I/\sigma(I) \rangle$ ¹	1.37 (at 1.00Å)	Xtriage
Refinement program	REFMAC 5.1.9999	Depositor
R, R_{free}	0.138 , 0.155 0.145 , 0.147	Depositor DCC
R_{free} test set	8774 reflections (5.17%)	DCC
Wilson B-factor (Å ²)	8.4	Xtriage
Anisotropy	0.494	Xtriage
Bulk solvent k_{sol} (e/Å ³), B_{sol} (Å ²)	0.41 , 52.7	EDS
Estimated twinning fraction	No twinning to report.	Xtriage
L-test for twinning ²	$\langle L \rangle = 0.49$, $\langle L^2 \rangle = 0.32$	Xtriage
Outliers	0 of 179426 reflections	Xtriage
F_o, F_c correlation	0.97	EDS
Total number of atoms	3500	wwPDB-VP
Average B, all atoms (Å ²)	14.0	wwPDB-VP

Xtriage's analysis on translational NCS is as follows: *The largest off-origin peak in the Patterson function is 6.52% of the height of the origin peak. No significant pseudotranslation is detected.*

¹Intensities estimated from amplitudes.

²Theoretical values of $\langle |L| \rangle$, $\langle L^2 \rangle$ for acentric reflections are 0.5, 0.375 respectively for untwinned datasets, and 0.333, 0.2 for perfectly twinned datasets.

5 Model quality [i](#)

5.1 Standard geometry [i](#)

Bond lengths and bond angles in the following residue types are not validated in this section: FMN, SCN, IPA

The Z score for a bond length (or angle) is the number of standard deviations the observed value is removed from the expected value. A bond length (or angle) with $|Z| > 5$ is considered an outlier worth inspection. RMSZ is the root-mean-square of all Z scores of the bond lengths (or angles).

Mol	Chain	Bond lengths		Bond angles	
		RMSZ	$\# Z > 5$	RMSZ	$\# Z > 5$
1	A	0.45	0/2932	0.76	3/3987 (0.1%)

There are no bond length outliers.

All (3) bond angle outliers are listed below:

Mol	Chain	Res	Type	Atoms	Z	Observed($^{\circ}$)	Ideal($^{\circ}$)
1	A	274	ASP	CB-CG-OD2	6.45	124.11	118.30
1	A	130	ARG	CG-CD-NE	6.16	124.74	111.80
1	A	19	ARG	NE-CZ-NH1	5.67	123.13	120.30

There are no chirality outliers.

There are no planarity outliers.

5.2 Too-close contacts [i](#)

In the following table, the Non-H and H(model) columns list the number of non-hydrogen atoms and hydrogen atoms in the chain respectively. The H(added) column lists the number of hydrogen atoms added and optimized by MolProbity. The Clashes column lists the number of clashes within the asymmetric unit, whereas Symm-Clashes lists symmetry related clashes.

Mol	Chain	Non-H	H(model)	H(added)	Clashes	Symm-Clashes
1	A	2800	0	2728	27	3
2	A	3	0	0	0	0
3	A	37	0	14	0	0
4	A	4	0	8	0	0
5	A	656	0	0	7	5
All	All	3500	0	2750	27	5

The all-atom clashscore is defined as the number of clashes found per 1000 atoms (including

hydrogen atoms). The all-atom clashscore for this structure is 5.

All (27) close contacts within the same asymmetric unit are listed below, sorted by their clash magnitude.

Atom-1	Atom-2	Interatomic distance (Å)	Clash overlap (Å)
1:A:130:ARG:HD2	1:A:144:ASP:OD1	1.49	1.11
1:A:202:GLN:HE21	1:A:202:GLN:H	1.15	0.93
1:A:214[B]:VAL:HG13	5:A:1555:HOH:O	1.68	0.92
1:A:126:ASN:HD22	1:A:128:ASN:H	1.14	0.89
1:A:60:GLN:HE21	1:A:102:TRP:HE1	1.36	0.72
1:A:130:ARG:HG2	1:A:130:ARG:HH11	1.58	0.69
1:A:200:THR:O	5:A:1811:HOH:O	2.11	0.69
1:A:129:THR:O	1:A:130:ARG:HD3	1.98	0.64
1:A:130:ARG:CG	1:A:130:ARG:HH11	2.16	0.58
1:A:202:GLN:HE21	1:A:202:GLN:N	1.96	0.56
1:A:130:ARG:CD	1:A:144:ASP:OD1	2.40	0.56
1:A:202:GLN:NE2	1:A:202:GLN:H	1.97	0.55
1:A:126:ASN:ND2	1:A:128:ASN:H	1.96	0.53
1:A:109:HIS:CD2	1:A:111:SER:H	2.27	0.52
1:A:223[B]:ASN:ND2	5:A:1787:HOH:O	2.43	0.51
1:A:145:THR:OG1	5:A:2052:HOH:O	2.20	0.50
1:A:58:ALA:HB1	1:A:102:TRP:CD2	2.48	0.48
1:A:153[B]:LEU:HG	1:A:201:ASP:OD2	2.16	0.46
1:A:307:LYS:NZ	5:A:1694:HOH:O	2.40	0.46
1:A:109:HIS:HD2	1:A:111:SER:H	1.63	0.45
1:A:308:ALA:CB	1:A:320[B]:VAL:HG21	2.47	0.45
1:A:130:ARG:NH1	5:A:2150:HOH:O	2.50	0.45
1:A:65:ALA:HB1	1:A:103:HIS:HA	1.99	0.43
1:A:109:HIS:HD2	1:A:111:SER:OG	2.02	0.42
1:A:5[A]:LEU:HB2	1:A:309:GLU:OE2	2.20	0.42
1:A:129:THR:C	1:A:130:ARG:HD3	2.40	0.41
1:A:126:ASN:ND2	5:A:2052:HOH:O	2.50	0.40

All (5) symmetry-related close contacts are listed below. The label for Atom-2 includes the symmetry operator and encoded unit-cell translations to be applied.

Atom-1	Atom-2	Interatomic distance (Å)	Clash overlap (Å)
1:A:348[A]:GLU:OE1	5:A:2158:HOH:O[3_645]	1.60	0.60
5:A:1611:HOH:O	5:A:2155:HOH:O[3_655]	1.91	0.29
1:A:348[A]:GLU:CD	5:A:2157:HOH:O[3_645]	1.96	0.24
1:A:348[A]:GLU:OE1	5:A:2157:HOH:O[3_645]	2.03	0.17
5:A:1811:HOH:O	5:A:2036:HOH:O[1_455]	2.07	0.13

5.3 Torsion angles

5.3.1 Protein backbone

In the following table, the Percentiles column shows the percent Ramachandran outliers of the chain as a percentile score with respect to all X-ray entries followed by that with respect to entries of similar resolution.

The Analysed column shows the number of residues for which the backbone conformation was analysed, and the total number of residues.

Mol	Chain	Analysed	Favoured	Allowed	Outliers	Percentiles	
1	A	379/364 (104%)	370 (98%)	9 (2%)	0	100	100

There are no Ramachandran outliers to report.

5.3.2 Protein sidechains

In the following table, the Percentiles column shows the percent sidechain outliers of the chain as a percentile score with respect to all X-ray entries followed by that with respect to entries of similar resolution.

The Analysed column shows the number of residues for which the sidechain conformation was analysed, and the total number of residues.

Mol	Chain	Analysed	Rotameric	Outliers	Percentiles	
1	A	289/284 (102%)	284 (98%)	5 (2%)	68	30

All (5) residues with a non-rotameric sidechain are listed below:

Mol	Chain	Res	Type
1	A	102	TRP
1	A	126	ASN
1	A	130	ARG
1	A	202	GLN
1	A	326	TYR

Some sidechains can be flipped to improve hydrogen bonding and reduce clashes. All (4) such sidechains are listed below:

Mol	Chain	Res	Type
1	A	60	GLN
1	A	109	HIS
1	A	126	ASN

Continued on next page...

Continued from previous page...

Mol	Chain	Res	Type
1	A	202	GLN

5.3.3 RNA [i](#)

There are no RNA molecules in this entry.

5.4 Non-standard residues in protein, DNA, RNA chains [i](#)

There are no non-standard protein/DNA/RNA residues in this entry.

5.5 Carbohydrates [i](#)

There are no carbohydrates in this entry.

5.6 Ligand geometry [i](#)

4 ligands are modelled in this entry.

In the following table, the Counts columns list the number of bonds (or angles) for which Mogul statistics could be retrieved, the number of bonds (or angles) that are observed in the model and the number of bonds (or angles) that are defined in the chemical component dictionary. The Link column lists molecule types, if any, to which the group is linked. The Z score for a bond length (or angle) is the number of standard deviations the observed value is removed from the expected value. A bond length (or angle) with $|Z| > 2$ is considered an outlier worth inspection. RMSZ is the root-mean-square of all Z scores of the bond lengths (or angles).

Mol	Type	Chain	Res	Link	Bond lengths			Bond angles		
					Counts	RMSZ	# Z > 2	Counts	RMSZ	# Z > 2
3	FMN	A	1401[A]	-	32,33,33	1.35	4 (12%)	34,50,50	2.32	10 (29%)
3	FMN	A	1401[B]	-	32,33,33	1.36	4 (12%)	34,50,50	2.93	12 (35%)
2	SCN	A	1501	-	2,2,2	0.82	0	1,1,1	0.52	0
4	IPA	A	1502	-	3,3,3	0.47	0	3,3,3	0.13	0

In the following table, the Chirals column lists the number of chiral outliers, the number of chiral centers analysed, the number of these observed in the model and the number defined in the chemical component dictionary. Similar counts are reported in the Torsion and Rings columns. '-' means no outliers of that kind were identified.

Mol	Type	Chain	Res	Link	Chirals	Torsions	Rings
3	FMN	A	1401[A]	-	-	0/18/18/18	0/3/3/3

Continued on next page...

Continued from previous page...

Mol	Type	Chain	Res	Link	Chirals	Torsions	Rings
3	FMN	A	1401[B]	-	-	0/18/18/18	0/3/3/3
2	SCN	A	1501	-	-	0/0/0/0	0/0/0/0
4	IPA	A	1502	-	-	0/0/0/0	0/0/0/0

All (8) bond length outliers are listed below:

Mol	Chain	Res	Type	Atoms	Z	Observed(Å)	Ideal(Å)
3	A	1401[B]	FMN	O5'-C5'	-2.24	1.35	1.44
3	A	1401[A]	FMN	P-O5'	2.81	1.67	1.59
3	A	1401[A]	FMN	C4-N3	3.03	1.38	1.33
3	A	1401[B]	FMN	C4-N3	3.03	1.38	1.33
3	A	1401[A]	FMN	C5A-N5	3.18	1.40	1.35
3	A	1401[B]	FMN	C5A-N5	3.18	1.40	1.35
3	A	1401[A]	FMN	C4A-N5	4.02	1.39	1.33
3	A	1401[B]	FMN	C4A-N5	4.02	1.39	1.33

All (22) bond angle outliers are listed below:

Mol	Chain	Res	Type	Atoms	Z	Observed(°)	Ideal(°)
3	A	1401[B]	FMN	O5'-P-O1P	-8.62	85.41	107.08
3	A	1401[A]	FMN	N3-C2-N1	-4.75	119.70	127.69
3	A	1401[B]	FMN	N3-C2-N1	-4.75	119.70	127.69
3	A	1401[A]	FMN	C4A-C4-N3	-4.49	117.66	123.52
3	A	1401[B]	FMN	C4A-C4-N3	-4.49	117.66	123.52
3	A	1401[A]	FMN	O3P-P-O5'	-2.78	98.61	106.72
3	A	1401[A]	FMN	O4'-C4'-C3'	-2.74	101.92	108.96
3	A	1401[B]	FMN	O2'-C2'-C3'	-2.20	103.29	108.96
3	A	1401[A]	FMN	C4-C4A-C10	-2.13	118.58	119.94
3	A	1401[B]	FMN	C4-C4A-C10	-2.13	118.58	119.94
3	A	1401[A]	FMN	C6-C5A-C9A	2.05	121.37	119.11
3	A	1401[B]	FMN	C6-C5A-C9A	2.05	121.37	119.11
3	A	1401[A]	FMN	O5'-P-O1P	2.17	112.54	107.08
3	A	1401[A]	FMN	C1'-N10-C9A	2.17	121.35	118.83
3	A	1401[B]	FMN	C1'-N10-C9A	2.17	121.35	118.83
3	A	1401[B]	FMN	O4'-C4'-C3'	2.65	115.78	108.96
3	A	1401[A]	FMN	C5A-C9A-N10	4.08	120.63	117.58
3	A	1401[B]	FMN	C5A-C9A-N10	4.08	120.63	117.58
3	A	1401[B]	FMN	O4'-C4'-C5'	4.42	119.73	110.09
3	A	1401[B]	FMN	O3P-P-O5'	4.81	120.75	106.72
3	A	1401[A]	FMN	C4-N3-C2	8.53	122.27	115.16
3	A	1401[B]	FMN	C4-N3-C2	8.53	122.27	115.16

There are no chirality outliers.

There are no torsion outliers.

There are no ring outliers.

No monomer is involved in short contacts.

5.7 Other polymers

There are no such residues in this entry.

5.8 Polymer linkage issues

There are no chain breaks in this entry.

6 Fit of model and data ⓘ

6.1 Protein, DNA and RNA chains ⓘ

In the following table, the column labelled ‘#RSRZ> 2’ contains the number (and percentage) of RSRZ outliers, followed by percent RSRZ outliers for the chain as percentile scores relative to all X-ray entries and entries of similar resolution. The OWAB column contains the minimum, median, 95th percentile and maximum values of the occupancy-weighted average B-factor per residue. The column labelled ‘Q< 0.9’ lists the number of (and percentage) of residues with an average occupancy less than 0.9.

Mol	Chain	Analysed	<RSRZ>	#RSRZ>2	OWAB(Å ²)	Q<0.9
1	A	361/364 (99%)	2.00	174 (48%) 0 1	7, 11, 18, 22	3 (0%)

All (174) RSRZ outliers are listed below:

Mol	Chain	Res	Type	RSRZ
1	A	279	LYS	4.9
1	A	178[A]	VAL	4.7
1	A	125[A]	LEU	4.1
1	A	102	TRP	3.9
1	A	320[A]	VAL	3.9
1	A	137	ASN	3.8
1	A	280	PRO	3.8
1	A	140	ALA	3.8
1	A	296	VAL	3.7
1	A	247	PRO	3.6
1	A	327	ILE	3.6
1	A	153[A]	LEU	3.6
1	A	312	ILE	3.5
1	A	136	GLU	3.4
1	A	90	VAL	3.4
1	A	277	GLY	3.3
1	A	332	LEU	3.3
1	A	130	ARG	3.3
1	A	275	LEU	3.3
1	A	297	ILE	3.3
1	A	5[A]	LEU	3.2
1	A	25	LEU	3.2
1	A	177	LEU	3.2
1	A	54	ILE	3.2
1	A	11	VAL	3.2
1	A	44	TYR	3.2
1	A	284	ALA	3.2

Continued on next page...

Continued from previous page...

Mol	Chain	Res	Type	RSRZ
1	A	223[A]	ASN	3.2
1	A	218	VAL	3.2
1	A	101	LEU	3.2
1	A	83	TRP	3.2
1	A	58	ALA	3.1
1	A	55	ILE	3.1
1	A	351	TYR	3.1
1	A	246	GLY	3.1
1	A	20	VAL	3.1
1	A	36	ILE	3.1
1	A	141	ILE	3.1
1	A	221	VAL	3.1
1	A	361	TYR	3.0
1	A	187	LEU	3.0
1	A	217	VAL	3.0
1	A	28	LEU	3.0
1	A	99	VAL	3.0
1	A	364	LEU	3.0
1	A	333	VAL	2.9
1	A	59	THR	2.9
1	A	61	ILE	2.9
1	A	358	TYR	2.9
1	A	180	LEU	2.9
1	A	342	LEU	2.9
1	A	65	ALA	2.9
1	A	175	PHE	2.9
1	A	74	LEU	2.8
1	A	104	THR	2.8
1	A	186	PHE	2.8
1	A	156	ILE	2.8
1	A	24	PRO	2.8
1	A	45	TYR	2.8
1	A	112[A]	ILE	2.8
1	A	350	PHE	2.8
1	A	242	ASN	2.7
1	A	232	ILE	2.7
1	A	281	TYR	2.7
1	A	131	THR	2.7
1	A	294	HIS	2.7
1	A	23	ALA	2.7
1	A	225	TRP	2.7
1	A	80	ILE	2.7

Continued on next page...

Continued from previous page...

Mol	Chain	Res	Type	RSRZ
1	A	310	ASP	2.7
1	A	317	ILE	2.7
1	A	268	LEU	2.7
1	A	97	ILE	2.7
1	A	183	ALA	2.7
1	A	261	ALA	2.7
1	A	71	ALA	2.6
1	A	303	TYR	2.6
1	A	194[A]	PRO	2.6
1	A	52	GLY	2.6
1	A	53	LEU	2.6
1	A	51	ALA	2.6
1	A	69	ALA	2.6
1	A	337	GLN	2.6
1	A	248	ASN	2.6
1	A	328	ALA	2.5
1	A	213	LEU	2.5
1	A	87	THR	2.5
1	A	86	ILE	2.5
1	A	107	ILE	2.5
1	A	257	ILE	2.5
1	A	319	ALA	2.5
1	A	336	LEU	2.5
1	A	68	TYR	2.5
1	A	240	PHE	2.5
1	A	305	ALA	2.5
1	A	31	ILE	2.5
1	A	159	ILE	2.5
1	A	265	ILE	2.5
1	A	98	ALA	2.4
1	A	188	LEU	2.4
1	A	316	LEU	2.4
1	A	348[A]	GLU	2.4
1	A	82	ALA	2.4
1	A	162	ASP	2.4
1	A	167	VAL	2.4
1	A	214[A]	VAL	2.4
1	A	326	TYR	2.4
1	A	73	GLY	2.4
1	A	72	PRO	2.4
1	A	230	ILE	2.4
1	A	166	ALA	2.4

Continued on next page...

Continued from previous page...

Mol	Chain	Res	Type	RSRZ
1	A	142	ARG	2.4
1	A	359	THR	2.3
1	A	154	ASP	2.3
1	A	244	ASP	2.3
1	A	160	VAL	2.3
1	A	287[A]	GLN	2.3
1	A	302	ALA	2.3
1	A	260	LEU	2.3
1	A	37	PRO	2.3
1	A	120	VAL	2.3
1	A	289	VAL	2.3
1	A	63	ALA	2.3
1	A	21	PHE	2.3
1	A	285	PHE	2.3
1	A	92	ALA	2.3
1	A	170	ALA	2.3
1	A	304	THR	2.3
1	A	203	TYR	2.3
1	A	298	ILE	2.2
1	A	274	ASP	2.2
1	A	191	PHE	2.2
1	A	322	PHE	2.2
1	A	49	ALA	2.2
1	A	7	THR	2.2
1	A	330	PRO	2.2
1	A	94	ASP	2.2
1	A	267	TYR	2.2
1	A	9	LEU	2.2
1	A	256	LEU	2.2
1	A	300	ALA	2.2
1	A	344	PRO	2.2
1	A	192	LEU	2.2
1	A	276	ALA	2.2
1	A	340	ALA	2.2
1	A	135	ASP	2.2
1	A	163	PHE	2.2
1	A	202	GLN	2.1
1	A	42	GLY	2.1
1	A	234	VAL	2.1
1	A	124[A]	ALA	2.1
1	A	168	ALA	2.1
1	A	227	ALA	2.1

Continued on next page...

Continued from previous page...

Mol	Chain	Res	Type	RSRZ
1	A	38	THR	2.1
1	A	145	THR	2.1
1	A	254	LEU	2.1
1	A	67	GLY	2.1
1	A	148	PRO	2.1
1	A	253	ALA	2.1
1	A	146	THR	2.1
1	A	151	LEU	2.1
1	A	13	ALA	2.1
1	A	173	ALA	2.1
1	A	143	VAL	2.1
1	A	255	TYR	2.1
1	A	241	GLN	2.1
1	A	33	PRO	2.1
1	A	40	LEU	2.1
1	A	26	THR	2.0
1	A	105	GLY	2.0
1	A	220	ALA	2.0
1	A	222	CYS	2.0
1	A	309	GLU	2.0
1	A	81	ALA	2.0

6.2 Non-standard residues in protein, DNA, RNA chains [i](#)

There are no non-standard protein/DNA/RNA residues in this entry.

6.3 Carbohydrates [i](#)

There are no carbohydrates in this entry.

6.4 Ligands [i](#)

In the following table, the Atoms column lists the number of modelled atoms in the group and the number defined in the chemical component dictionary. LLDF column lists the quality of electron density of the group with respect to its neighbouring residues in protein, DNA or RNA chains. The B-factors column lists the minimum, median, 95th percentile and maximum values of B factors of atoms in the group. The column labelled 'Q< 0.9' lists the number of atoms with occupancy less than 0.9.

Mol	Type	Chain	Res	Atoms	RSCC	RSR	LLDF	B-factors(Å ²)	Q<0.9
3	FMN	A	1401[A]	31/31	0.95	0.17	0.99	6,8,9,11	6

Continued on next page...

Continued from previous page...

Mol	Type	Chain	Res	Atoms	RSCC	RSR	LLDF	B-factors(\AA^2)	Q<0.9
3	FMN	A	1401[B]	31/31	0.95	0.17	0.99	7,8,11,11	6
4	IPA	A	1502	4/4	0.91	0.16	0.41	11,12,12,14	0
2	SCN	A	1501	3/3	0.90	0.16	-	9,9,11,15	0

6.5 Other polymers [i](#)

There are no such residues in this entry.