



Full wwPDB X-ray Structure Validation Report ⓘ

Feb 19, 2016 – 09:30 PM GMT

PDB ID : 5ADD
Title : Structure of rat neuronal nitric oxide synthase d597n m336v mutant heme domain in complex with 7-((3-(methylamino)methyl) phenoxy)methyl)quinolin-2-amine
Authors : Li, H.; Poulos, T.L.
Deposited on : 2015-08-20
Resolution : 2.10 Å(reported)

This is a Full wwPDB X-ray Structure Validation Report for a publicly released PDB entry.
We welcome your comments at validation@mail.wwpdb.org
A user guide is available at
<http://wwpdb.org/validation/2016/XrayValidationReportHelp>
with specific help available everywhere you see the ⓘ symbol.

The following versions of software and data (see [references ⓘ](#)) were used in the production of this report:

MolProbity	:	4.02b-467
Mogul	:	unknown
Xtriage (Phenix)	:	1.9-1692
EDS	:	rb-20026982
Percentile statistics	:	20151230.v01 (using entries in the PDB archive December 30th 2015)
Refmac	:	5.8.0135
CCP4	:	6.5.0
Ideal geometry (proteins)	:	Engh & Huber (2001)
Ideal geometry (DNA, RNA)	:	Parkinson et al. (1996)
Validation Pipeline (wwPDB-VP)	:	rb-20026982

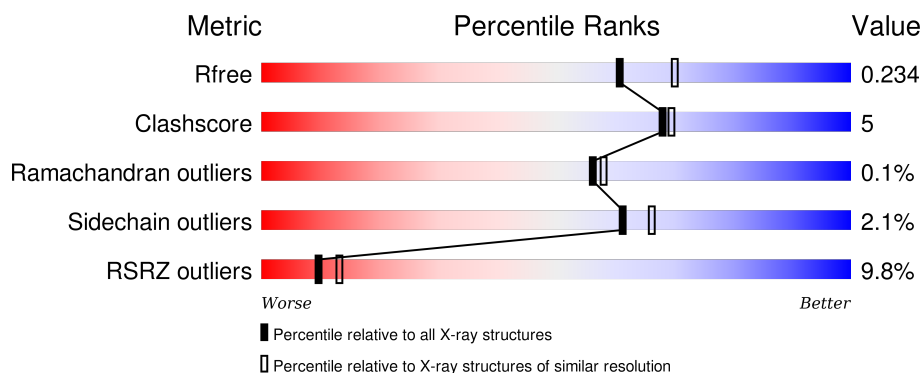
1 Overall quality at a glance ⓘ

The following experimental techniques were used to determine the structure:

X-RAY DIFFRACTION

The reported resolution of this entry is 2.10 Å.

Percentile scores (ranging between 0-100) for global validation metrics of the entry are shown in the following graphic. The table shows the number of entries on which the scores are based.



Metric	Whole archive (#Entries)	Similar resolution (#Entries, resolution range(Å))
R_{free}	91344	3939 (2.10-2.10)
Clashscore	102246	4460 (2.10-2.10)
Ramachandran outliers	100387	4413 (2.10-2.10)
Sidechain outliers	100360	4414 (2.10-2.10)
RSRZ outliers	91569	3948 (2.10-2.10)

The table below summarises the geometric issues observed across the polymeric chains and their fit to the electron density. The red, orange, yellow and green segments on the lower bar indicate the fraction of residues that contain outliers for ≥ 3 , 2, 1 and 0 types of geometric quality criteria. A grey segment represents the fraction of residues that are not modelled. The numeric value for each fraction is indicated below the corresponding segment, with a dot representing fractions $\leq 5\%$. The upper red bar (where present) indicates the fraction of residues that have poor fit to the electron density. The numeric value is given above the bar.

Mol	Chain	Length	Quality of chain
1	A	422	<div> <div>14%</div> <div>82%</div> <div>14%</div> <div>•</div> </div>
1	B	422	<div> <div>5%</div> <div>87%</div> <div>10%</div> <div>•</div> </div>

The following table lists non-polymeric compounds, carbohydrate monomers and non-standard residues in protein, DNA, RNA chains that are outliers for geometric or electron-density-fit criteria:

Mol	Type	Chain	Res	Chirality	Geometry	Clashes	Electron density
4	M85	B	800	-	-	-	X
5	ACT	A	860	-	-	-	X
5	ACT	B	860	-	-	-	X

2 Entry composition [i](#)

There are 7 unique types of molecules in this entry. The entry contains 7209 atoms, of which 0 are hydrogens and 0 are deuteriums.

In the tables below, the ZeroOcc column contains the number of atoms modelled with zero occupancy, the AltConf column contains the number of residues with at least one atom in alternate conformation and the Trace column contains the number of residues modelled with at most 2 atoms.

- Molecule 1 is a protein called NITRIC OXIDE SYNTHASE, BRAIN.

Mol	Chain	Residues	Atoms					ZeroOcc	AltConf	Trace
1	A	408	Total	C	N	O	S	0	3	1
			3326	2130	568	607	21			
1	B	411	Total	C	N	O	S	0	3	0
			3356	2148	575	613	20			

There are 4 discrepancies between the modelled and reference sequences:

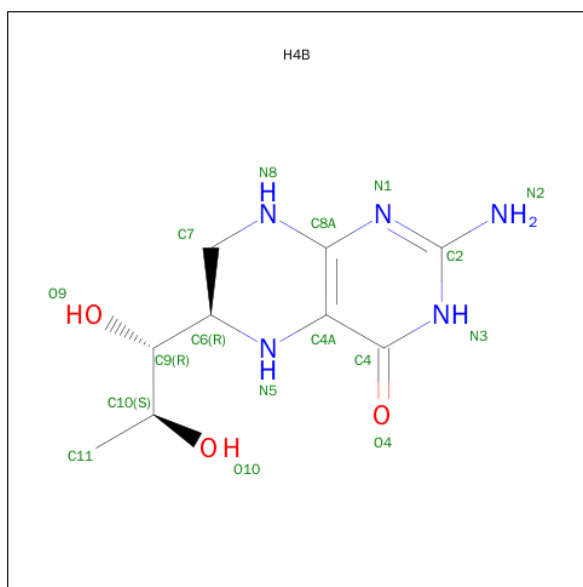
Chain	Residue	Modelled	Actual	Comment	Reference
A	336	VAL	MET	ENGINEERED MUTATION	UNP P29476
A	597	ASN	ASP	ENGINEERED MUTATION	UNP P29476
B	336	VAL	MET	ENGINEERED MUTATION	UNP P29476
B	597	ASN	ASP	ENGINEERED MUTATION	UNP P29476

- Molecule 2 is PROTOPORPHYRIN IX CONTAINING FE (three-letter code: HEM) (formula: $C_{34}H_{32}FeN_4O_4$).



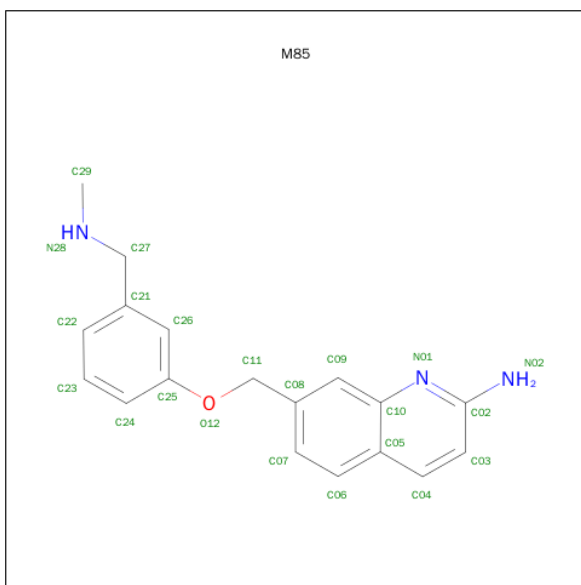
Mol	Chain	Residues	Atoms					ZeroOcc	AltConf
2	A	1	Total 43	C 34	Fe 1	N 4	O 4	0	0
2	B	1	Total 43	C 34	Fe 1	N 4	O 4	0	0

- Molecule 3 is 5,6,7,8-TETRAHYDROBIOPTERIN (three-letter code: H4B) (formula: $C_9H_{15}N_5O_3$).



Mol	Chain	Residues	Atoms				ZeroOcc	AltConf
3	A	1	Total	C	N	O	0	0
			17	9	5	3		
3	B	1	Total	C	N	O	0	0
			17	9	5	3		

- Molecule 4 is 7-[[3-(METHYLAMINOMETHYL)PHENOXY]METHYL]QUINOLIN-2-AMINE (three-letter code: M85) (formula: $C_{18}H_{19}N_3O$).



Mol	Chain	Residues	Atoms				ZeroOcc	AltConf
4	A	1	Total	C	N	O	0	0
			22	18	3	1		
4	B	1	Total	C	N	O	0	0
			22	18	3	1		

- Molecule 5 is ACETATE ION (three-letter code: ACT) (formula: $C_2H_3O_2$).



Mol	Chain	Residues	Atoms			ZeroOcc	AltConf
5	A	1	Total	C	O	0	0
			4	2	2		
5	B	1	Total	C	O	0	0
			4	2	2		

- Molecule 6 is ZINC ION (three-letter code: ZN) (formula: Zn).

Mol	Chain	Residues	Atoms		ZeroOcc	AltConf
6	A	1	Total 1	Zn 1	0	0

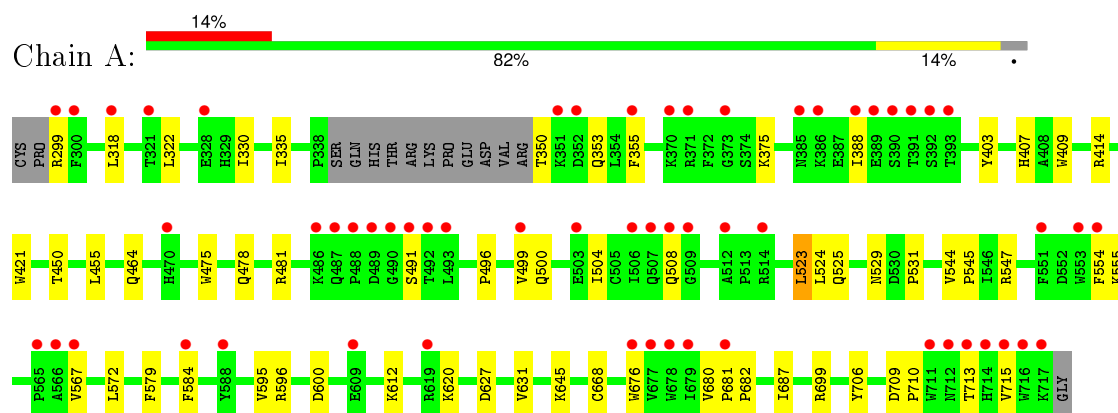
- Molecule 7 is water.

Mol	Chain	Residues	Atoms		ZeroOcc	AltConf
7	A	154	Total 154	O 154	0	0
7	B	200	Total 200	O 200	0	0

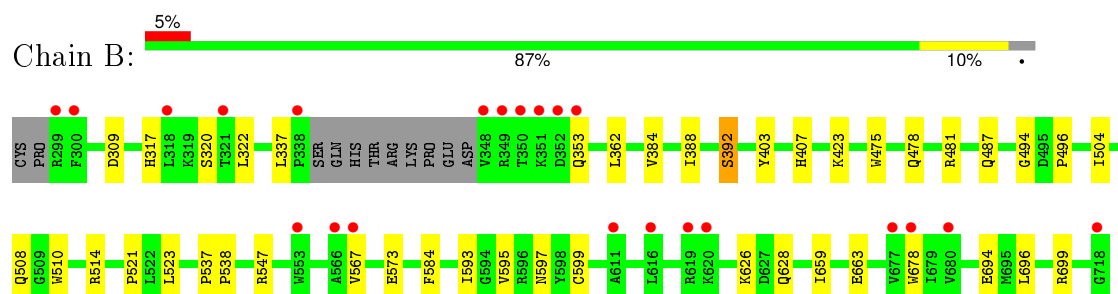
3 Residue-property plots [i](#)

These plots are drawn for all protein, RNA and DNA chains in the entry. The first graphic for a chain summarises the proportions of errors displayed in the second graphic. The second graphic shows the sequence view annotated by issues in geometry and electron density. Residues are color-coded according to the number of geometric quality criteria for which they contain at least one outlier: green = 0, yellow = 1, orange = 2 and red = 3 or more. A red dot above a residue indicates a poor fit to the electron density ($\text{RSRZ} > 2$). Stretches of 2 or more consecutive residues without any outlier are shown as a green connector. Residues present in the sample, but not in the model, are shown in grey.

• Molecule 1: NITRIC OXIDE SYNTHASE, BRAIN



• Molecule 1: NITRIC OXIDE SYNTHASE, BRAIN



4 Data and refinement statistics

Property	Value	Source
Space group	P 21 21 21	Depositor
Cell constants a, b, c, α , β , γ	51.83Å 110.84Å 165.09Å 90.00° 90.00° 90.00°	Depositor
Resolution (Å)	40.81 – 2.10 40.81 – 2.10	Depositor EDS
% Data completeness (in resolution range)	99.6 (40.81-2.10) 99.6 (40.81-2.10)	Depositor EDS
R_{merge}	0.10	Depositor
R_{sym}	(Not available)	Depositor
$\langle I/\sigma(I) \rangle$ ¹	1.40 (at 2.10Å)	Xtriage
Refinement program	PHENIX (PHENIX.REFINE)	Depositor
R, R_{free}	0.187 , 0.231 0.193 , 0.234	Depositor DCC
R_{free} test set	2774 reflections (5.19%)	DCC
Wilson B-factor (Å ²)	32.2	Xtriage
Anisotropy	0.753	Xtriage
Bulk solvent k_{sol} (e/Å ³), B_{sol} (Å ²)	0.36 , 56.3	EDS
Estimated twinning fraction	No twinning to report.	Xtriage
L-test for twinning ²	$\langle L \rangle = 0.49$, $\langle L^2 \rangle = 0.32$	Xtriage
Outliers	2 of 56244 reflections (0.004%)	Xtriage
F_o, F_c correlation	0.96	EDS
Total number of atoms	7209	wwPDB-VP
Average B, all atoms (Å ²)	50.0	wwPDB-VP

Xtriage's analysis on translational NCS is as follows: *The largest off-origin peak in the Patterson function is 5.56% of the height of the origin peak. No significant pseudotranslation is detected.*

¹Intensities estimated from amplitudes.

²Theoretical values of $\langle |L| \rangle$, $\langle L^2 \rangle$ for acentric reflections are 0.5, 0.375 respectively for untwinned datasets, and 0.333, 0.2 for perfectly twinned datasets.

5 Model quality

5.1 Standard geometry

Bond lengths and bond angles in the following residue types are not validated in this section: HEM, ZN, M85, H4B, ACT

The Z score for a bond length (or angle) is the number of standard deviations the observed value is removed from the expected value. A bond length (or angle) with $|Z| > 5$ is considered an outlier worth inspection. RMSZ is the root-mean-square of all Z scores of the bond lengths (or angles).

Mol	Chain	Bond lengths		Bond angles	
		RMSZ	# Z >5	RMSZ	# Z >5
1	A	0.42	0/3428	0.53	0/4654
1	B	0.43	0/3458	0.52	0/4689
All	All	0.43	0/6886	0.52	0/9343

There are no bond length outliers.

There are no bond angle outliers.

There are no chirality outliers.

There are no planarity outliers.

5.2 Too-close contacts

In the following table, the Non-H and H(model) columns list the number of non-hydrogen atoms and hydrogen atoms in the chain respectively. The H(added) column lists the number of hydrogen atoms added and optimized by MolProbity. The Clashes column lists the number of clashes within the asymmetric unit, whereas Symm-Clashes lists symmetry related clashes.

Mol	Chain	Non-H	H(model)	H(added)	Clashes	Symm-Clashes
1	A	3326	0	3241	41	0
1	B	3356	0	3277	23	0
2	A	43	0	30	3	0
2	B	43	0	30	2	0
3	A	17	0	15	0	0
3	B	17	0	15	0	0
4	A	22	0	19	2	0
4	B	22	0	19	3	0
5	A	4	0	3	0	0
5	B	4	0	3	0	0
6	A	1	0	0	0	0

Continued on next page...

Continued from previous page...

Mol	Chain	Non-H	H(model)	H(added)	Clashes	Symm-Clashes
7	A	154	0	0	2	0
7	B	200	0	0	0	0
All	All	7209	0	6652	63	0

The all-atom clashscore is defined as the number of clashes found per 1000 atoms (including hydrogen atoms). The all-atom clashscore for this structure is 5.

All (63) close contacts within the same asymmetric unit are listed below, sorted by their clash magnitude.

Atom-1	Atom-2	Interatomic distance (Å)	Clash overlap (Å)
1:A:523:LEU:HD22	1:A:531:PRO:HB2	1.58	0.82
2:B:750:HEM:HBC2	2:B:750:HEM:HMC2	1.71	0.72
2:B:750:HEM:HHC	2:B:750:HEM:HBB2	1.75	0.67
2:A:750:HEM:HBB2	2:A:750:HEM:HHC	1.80	0.64
1:A:322:LEU:HD13	1:A:699:ARG:HH21	1.66	0.61
1:B:478:GLN:HB2	1:B:481:ARG:HG3	1.85	0.59
1:B:567:VAL:HG21	4:B:800:M85:C07	2.33	0.58
1:A:475:TRP:HB2	1:A:523:LEU:HB3	1.87	0.56
1:A:668[B]:CYS:SG	7:A:2136:HOH:O	2.58	0.56
1:A:567:VAL:HG21	4:A:800:M85:C07	2.38	0.53
1:A:478:GLN:HB2	1:A:481:ARG:HG3	1.90	0.53
1:A:350:THR:N	1:A:353:GLN:OE1	2.42	0.53
1:A:706:TYR:OH	2:A:750:HEM:O2D	2.21	0.52
1:A:322:LEU:HD13	1:A:699:ARG:NH2	2.26	0.51
1:A:687:ILE:HD12	1:B:626:LYS:HB3	1.92	0.51
1:A:322:LEU:HB2	1:A:699:ARG:HB2	1.93	0.51
1:A:475:TRP:CZ2	1:A:531:PRO:HG3	2.45	0.51
1:B:487:GLN:OE1	1:B:514:ARG:NH2	2.44	0.50
1:A:584:PHE:HE1	4:A:800:M85:H06	1.77	0.49
1:A:450:THR:HA	1:A:455:LEU:HD22	1.94	0.49
1:A:631:VAL:HG11	1:B:628:GLN:HG3	1.95	0.49
1:B:584:PHE:HE1	4:B:800:M85:H06	1.78	0.49
1:A:330:ILE:HD11	1:B:696:LEU:HB3	1.95	0.48
1:B:595:VAL:O	1:B:599:CYS:HB2	2.14	0.48
1:A:596:ARG:O	1:A:600:ASP:HB2	2.14	0.48
1:A:508:GLN:HE21	1:A:531:PRO:HG2	1.79	0.47
1:A:676:TRP:CE2	1:A:680:VAL:HG21	2.50	0.47
1:B:593:ILE:HA	1:B:597:ASN:HB2	1.97	0.46
1:A:330:ILE:HD11	1:B:696:LEU:HD22	1.97	0.46
1:B:403:TYR:CE2	1:B:407:HIS:CE1	3.03	0.46
1:A:525:GLN:HG3	1:A:529:ASN:O	2.15	0.46

Continued on next page...

Continued from previous page...

Atom-1	Atom-2	Interatomic distance (Å)	Clash overlap (Å)
1:A:414:ARG:NH1	1:A:706:TYR:OH	2.49	0.46
1:A:572:LEU:HB3	1:A:579:PHE:HB2	2.00	0.43
1:A:620:LYS:HB2	1:A:620:LYS:NZ	2.33	0.43
1:A:544:VAL:HA	1:A:545:PRO:HD2	1.91	0.43
1:A:627:ASP:O	1:A:631:VAL:HG23	2.19	0.42
1:B:475:TRP:HB2	1:B:523:LEU:HB3	2.01	0.42
1:A:464:GLN:HB3	1:A:579:PHE:CE1	2.55	0.42
1:A:554:PHE:HB3	7:A:2103:HOH:O	2.19	0.42
1:A:496:PRO:HA	1:A:499:VAL:HG23	2.02	0.42
1:B:362:LEU:HD11	1:B:384:VAL:HG21	2.01	0.42
2:A:750:HEM:HMC1	2:A:750:HEM:HBC2	2.01	0.42
1:A:676:TRP:CZ2	1:A:680:VAL:HG21	2.54	0.42
1:B:659:ILE:O	1:B:663:GLU:HG3	2.20	0.42
1:A:409:TRP:CE3	1:A:421:TRP:HA	2.55	0.41
1:A:335:ILE:HD13	1:B:694:GLU:HB3	2.03	0.41
1:A:524:LEU:O	1:A:531:PRO:HA	2.20	0.41
1:B:494:GLY:O	1:B:496:PRO:HD3	2.21	0.41
1:A:299:ARG:HE	1:A:318:LEU:HD13	1.85	0.41
1:A:523:LEU:HA	1:A:523:LEU:HD23	1.86	0.41
1:A:595:VAL:HG11	1:A:682:PRO:HB2	2.03	0.41
1:A:403:TYR:CE2	1:A:407:HIS:CE1	3.09	0.41
1:A:709:ASP:HA	1:A:710:PRO:HD3	1.88	0.41
1:B:322:LEU:HD13	1:B:699:ARG:NH2	2.35	0.41
1:B:317:HIS:O	1:B:320:SER:HB3	2.20	0.41
1:A:355:PHE:HD1	1:A:388:ILE:HD12	1.85	0.41
1:B:678:TRP:HH2	4:B:800:M85:HN28	1.69	0.40
1:A:680:VAL:HA	1:A:681:PRO:HD3	1.93	0.40
1:B:510:TRP:CE2	1:B:521:PRO:HD3	2.56	0.40
1:B:504:ILE:O	1:B:508:GLN:HG2	2.21	0.40
1:B:388:ILE:O	1:B:392:SER:N	2.51	0.40
1:A:500:GLN:O	1:A:504:ILE:HG13	2.21	0.40
1:B:537:PRO:HA	1:B:538:PRO:HD3	1.97	0.40

There are no symmetry-related clashes.

5.3 Torsion angles ⓘ

5.3.1 Protein backbone ⓘ

In the following table, the Percentiles column shows the percent Ramachandran outliers of the chain as a percentile score with respect to all X-ray entries followed by that with respect to entries

of similar resolution.

The Analysed column shows the number of residues for which the backbone conformation was analysed, and the total number of residues.

Mol	Chain	Analysed	Favoured	Allowed	Outliers	Percentiles	
1	A	407/422 (96%)	388 (95%)	18 (4%)	1 (0%)	52	53
1	B	410/422 (97%)	404 (98%)	6 (2%)	0	100	100
All	All	817/844 (97%)	792 (97%)	24 (3%)	1 (0%)	56	58

All (1) Ramachandran outliers are listed below:

Mol	Chain	Res	Type
1	A	491	SER

5.3.2 Protein sidechains ⓘ

In the following table, the Percentiles column shows the percent sidechain outliers of the chain as a percentile score with respect to all X-ray entries followed by that with respect to entries of similar resolution.

The Analysed column shows the number of residues for which the sidechain conformation was analysed, and the total number of residues.

Mol	Chain	Analysed	Rotameric	Outliers	Percentiles	
1	A	366/377 (97%)	358 (98%)	8 (2%)	60	64
1	B	369/377 (98%)	362 (98%)	7 (2%)	65	70
All	All	735/754 (98%)	720 (98%)	15 (2%)	61	68

All (15) residues with a non-rotameric sidechain are listed below:

Mol	Chain	Res	Type
1	A	375	LYS
1	A	523	LEU
1	A	547	ARG
1	A	555	LYS
1	A	612	LYS
1	A	645	LYS
1	A	713	THR
1	A	715	VAL
1	B	309	ASP
1	B	337	LEU
1	B	353	GLN

Continued on next page...

Continued from previous page...

Mol	Chain	Res	Type
1	B	392	SER
1	B	423	LYS
1	B	547	ARG
1	B	573	GLU

Some sidechains can be flipped to improve hydrogen bonding and reduce clashes. All (1) such sidechains are listed below:

Mol	Chain	Res	Type
1	A	508	GLN

5.3.3 RNA ⓘ

There are no RNA molecules in this entry.

5.4 Non-standard residues in protein, DNA, RNA chains ⓘ

There are no non-standard protein/DNA/RNA residues in this entry.

5.5 Carbohydrates ⓘ

There are no carbohydrates in this entry.

5.6 Ligand geometry ⓘ

Of 9 ligands modelled in this entry, 1 is monoatomic - leaving 8 for Mogul analysis.

In the following table, the Counts columns list the number of bonds (or angles) for which Mogul statistics could be retrieved, the number of bonds (or angles) that are observed in the model and the number of bonds (or angles) that are defined in the chemical component dictionary. The Link column lists molecule types, if any, to which the group is linked. The Z score for a bond length (or angle) is the number of standard deviations the observed value is removed from the expected value. A bond length (or angle) with $|Z| > 2$ is considered an outlier worth inspection. RMSZ is the root-mean-square of all Z scores of the bond lengths (or angles).

Mol	Type	Chain	Res	Link	Bond lengths			Bond angles		
					Counts	RMSZ	# Z > 2	Counts	RMSZ	# Z > 2
2	HEM	A	750	1	24,50,50	2.29	7 (29%)	16,82,82	2.33	4 (25%)
3	H4B	A	760	-	15,18,18	0.83	0	12,26,26	2.65	6 (50%)
4	M85	A	800	-	24,24,24	0.95	1 (4%)	32,32,32	1.13	2 (6%)

Mol	Type	Chain	Res	Link	Bond lengths			Bond angles		
					Counts	RMSZ	# Z > 2	Counts	RMSZ	# Z > 2
5	ACT	A	860	-	0,3,3	0.00	-	0,3,3	0.00	-
2	HEM	B	750	1	24,50,50	2.31	10 (41%)	16,82,82	1.86	3 (18%)
3	H4B	B	760	-	15,18,18	1.00	1 (6%)	12,26,26	2.36	5 (41%)
4	M85	B	800	-	24,24,24	0.91	1 (4%)	32,32,32	1.16	2 (6%)
5	ACT	B	860	-	0,3,3	0.00	-	0,3,3	0.00	-

In the following table, the Chirals column lists the number of chiral outliers, the number of chiral centers analysed, the number of these observed in the model and the number defined in the chemical component dictionary. Similar counts are reported in the Torsion and Rings columns. '-' means no outliers of that kind were identified.

Mol	Type	Chain	Res	Link	Chirals	Torsions	Rings
2	HEM	A	750	1	-	0/6/54/54	0/0/8/8
3	H4B	A	760	-	-	0/8/17/17	0/2/2/2
4	M85	A	800	-	-	0/7/8/8	0/3/3/3
5	ACT	A	860	-	-	0/0/0/0	0/0/0/0
2	HEM	B	750	1	-	0/6/54/54	0/0/8/8
3	H4B	B	760	-	-	0/8/17/17	0/2/2/2
4	M85	B	800	-	-	0/7/8/8	0/3/3/3
5	ACT	B	860	-	-	0/0/0/0	0/0/0/0

All (20) bond length outliers are listed below:

Mol	Chain	Res	Type	Atoms	Z	Observed(Å)	Ideal(Å)
2	A	750	HEM	C3B-C2B	-4.46	1.34	1.40
2	B	750	HEM	C3B-C2B	-4.06	1.35	1.40
2	B	750	HEM	C3C-C2C	-3.79	1.35	1.40
2	A	750	HEM	C3C-C2C	-3.42	1.36	1.40
2	B	750	HEM	CMC-C2C	2.06	1.56	1.51
3	B	760	H4B	C4-N3	2.07	1.36	1.33
2	B	750	HEM	C1B-NB	2.10	1.39	1.36
4	B	800	M85	C02-N01	2.12	1.35	1.33
2	B	750	HEM	CMB-C2B	2.13	1.56	1.51
2	A	750	HEM	CMC-C2C	2.13	1.56	1.51
2	B	750	HEM	CMD-C2D	2.36	1.56	1.51
2	B	750	HEM	C4D-ND	2.37	1.39	1.36
4	A	800	M85	C02-N01	2.46	1.36	1.33
2	A	750	HEM	C4D-ND	2.72	1.40	1.36
2	B	750	HEM	C3B-CAB	3.71	1.55	1.47
2	A	750	HEM	C3B-CAB	3.78	1.55	1.47
2	A	750	HEM	C3C-CAC	3.79	1.55	1.47
2	B	750	HEM	C3C-CAC	3.86	1.55	1.47

Continued on next page...

Continued from previous page...

Mol	Chain	Res	Type	Atoms	Z	Observed(Å)	Ideal(Å)
2	A	750	HEM	C3D-C2D	5.39	1.53	1.37
2	B	750	HEM	C3D-C2D	5.45	1.53	1.37

All (22) bond angle outliers are listed below:

Mol	Chain	Res	Type	Atoms	Z	Observed(°)	Ideal(°)
2	A	750	HEM	CBA-CAA-C2A	-6.95	100.27	112.49
2	B	750	HEM	CBA-CAA-C2A	-4.73	104.17	112.49
3	A	760	H4B	N3-C2-N1	-3.53	119.74	125.51
2	A	750	HEM	CAD-CBD-CGD	-3.35	106.26	112.78
2	B	750	HEM	CBD-CAD-C3D	-3.00	107.20	112.47
3	B	760	H4B	N3-C2-N1	-2.96	120.67	125.51
2	B	750	HEM	CAD-CBD-CGD	-2.84	107.26	112.78
2	A	750	HEM	CBD-CAD-C3D	-2.43	108.21	112.47
4	B	800	M85	C03-C02-N01	-2.30	119.80	122.22
2	A	750	HEM	C3C-C4C-NC	-2.03	107.11	110.94
3	A	760	H4B	N2-C2-N1	2.16	120.76	117.20
3	B	760	H4B	C4A-C8A-N8	2.33	120.73	118.26
4	A	800	M85	C11-O12-C25	2.33	123.61	117.58
3	B	760	H4B	C2-N1-C8A	2.66	120.60	114.63
4	A	800	M85	C02-N01-C10	2.88	121.12	117.60
3	A	760	H4B	C2-N1-C8A	3.01	121.39	114.63
3	B	760	H4B	C4-N3-C2	3.18	119.61	115.88
4	B	800	M85	C02-N01-C10	3.19	121.50	117.60
3	A	760	H4B	C4A-C8A-N8	3.26	121.71	118.26
3	A	760	H4B	C4-N3-C2	4.32	120.94	115.88
3	A	760	H4B	C4-C4A-C8A	4.82	118.85	114.61
3	B	760	H4B	C4-C4A-C8A	5.40	119.36	114.61

There are no chirality outliers.

There are no torsion outliers.

There are no ring outliers.

4 monomers are involved in 10 short contacts:

Mol	Chain	Res	Type	Clashes	Symm-Clashes
2	A	750	HEM	3	0
4	A	800	M85	2	0
2	B	750	HEM	2	0
4	B	800	M85	3	0

5.7 Other polymers

There are no such residues in this entry.

5.8 Polymer linkage issues

There are no chain breaks in this entry.

6 Fit of model and data

6.1 Protein, DNA and RNA chains

In the following table, the column labelled ‘#RSRZ> 2’ contains the number (and percentage) of RSRZ outliers, followed by percent RSRZ outliers for the chain as percentile scores relative to all X-ray entries and entries of similar resolution. The OWAB column contains the minimum, median, 95th percentile and maximum values of the occupancy-weighted average B-factor per residue. The column labelled ‘Q< 0.9’ lists the number of (and percentage) of residues with an average occupancy less than 0.9.

Mol	Chain	Analysed	<RSRZ>	#RSRZ>2	OWAB(Å ²)	Q<0.9
1	A	408/422 (96%)	0.84	58 (14%) 4 5	25, 51, 97, 148	0
1	B	411/422 (97%)	0.35	22 (5%) 29 38	24, 42, 74, 119	0
All	All	819/844 (97%)	0.59	80 (9%) 10 13	24, 45, 92, 148	0

All (80) RSRZ outliers are listed below:

Mol	Chain	Res	Type	RSRZ
1	A	717	LYS	12.8
1	A	715	VAL	8.5
1	B	350	THR	7.8
1	B	348	VAL	7.6
1	A	716	TRP	7.4
1	B	300	PHE	6.0
1	B	718	GLY	5.9
1	A	352	ASP	5.5
1	A	488	PRO	5.4
1	A	714	HIS	4.6
1	A	507	GLN	4.4
1	A	388	ILE	4.3
1	B	352	ASP	3.9
1	A	355	PHE	3.8
1	A	551	PHE	3.8
1	B	619	ARG	3.8
1	A	712	ASN	3.7
1	A	713	THR	3.7
1	A	390	SER	3.7
1	A	300	PHE	3.7
1	A	486	LYS	3.6
1	A	711	TRP	3.6
1	A	489	ASP	3.5
1	A	503	GLU	3.5

Continued on next page...

Continued from previous page...

Mol	Chain	Res	Type	RSRZ
1	A	553	TRP	3.3
1	B	318	LEU	3.3
1	B	349	ARG	3.2
1	A	373	GLY	3.1
1	A	508	GLN	3.1
1	A	491	SER	3.1
1	A	391	THR	3.0
1	B	299	ARG	3.0
1	A	389	GLU	3.0
1	A	678	TRP	2.9
1	A	493	LEU	2.9
1	A	554	PHE	2.9
1	A	567	VAL	2.8
1	A	499	VAL	2.8
1	B	351	LYS	2.8
1	B	616	LEU	2.8
1	A	506	ILE	2.7
1	A	393	THR	2.7
1	A	299	ARG	2.7
1	A	514	ARG	2.7
1	B	321	THR	2.7
1	A	386	LYS	2.7
1	A	490	GLY	2.7
1	B	677	VAL	2.7
1	A	487	GLN	2.6
1	A	584	PHE	2.6
1	A	392	SER	2.5
1	A	492	THR	2.5
1	A	512	ALA	2.5
1	A	351	LYS	2.5
1	A	318	LEU	2.4
1	A	679	ILE	2.4
1	A	566	ALA	2.4
1	A	370	LYS	2.4
1	A	677	VAL	2.3
1	A	565	PRO	2.3
1	A	385	ASN	2.3
1	A	609	GLU	2.3
1	A	588	TYR	2.2
1	B	620	LYS	2.2
1	B	567	VAL	2.2
1	A	619	ARG	2.2

Continued on next page...

Continued from previous page...

Mol	Chain	Res	Type	RSRZ
1	B	566	ALA	2.2
1	A	321	THR	2.2
1	A	371	ARG	2.2
1	B	553	TRP	2.2
1	B	680	VAL	2.2
1	B	353	GLN	2.2
1	A	470	HIS	2.2
1	A	509	GLY	2.2
1	B	611	ALA	2.2
1	A	328	GLU	2.1
1	A	676	TRP	2.1
1	B	338	PRO	2.1
1	B	678	TRP	2.1
1	A	681	PRO	2.0

6.2 Non-standard residues in protein, DNA, RNA chains [i](#)

There are no non-standard protein/DNA/RNA residues in this entry.

6.3 Carbohydrates [i](#)

There are no carbohydrates in this entry.

6.4 Ligands [i](#)

In the following table, the Atoms column lists the number of modelled atoms in the group and the number defined in the chemical component dictionary. LLDF column lists the quality of electron density of the group with respect to its neighbouring residues in protein, DNA or RNA chains. The B-factors column lists the minimum, median, 95th percentile and maximum values of B factors of atoms in the group. The column labelled 'Q< 0.9' lists the number of atoms with occupancy less than 0.9.

Mol	Type	Chain	Res	Atoms	RSCC	RSR	LLDF	B-factors(Å ²)	Q<0.9
5	ACT	A	860	4/4	0.87	0.21	3.55	57,61,62,63	0
4	M85	B	800	22/22	0.88	0.26	2.59	29,50,80,83	0
5	ACT	B	860	4/4	0.94	0.15	2.20	50,58,59,62	0
2	HEM	B	750	43/43	0.97	0.18	1.30	19,32,48,59	0
4	M85	A	800	22/22	0.93	0.24	0.91	32,45,82,83	0
2	HEM	A	750	43/43	0.98	0.20	0.84	23,35,54,56	0
3	H4B	A	760	17/17	0.92	0.18	0.71	24,37,43,49	0

Continued on next page...

Continued from previous page...

Mol	Type	Chain	Res	Atoms	RSCC	RSR	LLDF	B-factors(\AA^2)	Q<0.9
3	H4B	B	760	17/17	0.94	0.18	0.49	26,37,47,50	0
6	ZN	A	1717	1/1	1.00	0.10	-0.88	36,36,36,36	0

6.5 Other polymers [i](#)

There are no such residues in this entry.