



Full wwPDB X-ray Structure Validation Report ⓘ

Feb 1, 2016 – 07:21 AM GMT

PDB ID : 3AHJ
Title : H553A mutant of Phosphoketolase from Bifidobacterium Breve
Authors : Suzuki, R.; Katayama, T.; Kim, B.-J.; Wakagi, T.; Shoun, H.; Ashida, H.; Yamamoto, K.; Fushinobu, S.
Deposited on : 2010-04-22
Resolution : 2.10 Å(reported)

This is a Full wwPDB X-ray Structure Validation Report for a publicly released PDB entry.
We welcome your comments at validation@mail.wwpdb.org
A user guide is available at
<http://wwpdb.org/validation/2016/XrayValidationReportHelp>
with specific help available everywhere you see the ⓘ symbol.

The following versions of software and data (see [references ⓘ](#)) were used in the production of this report:

MolProbity : 4.02b-467
Mogul : 1.7 (RC4), CSD as536be (2015)
Xtriage (Phenix) : 1.9-1692
EDS : rb-20026688
Percentile statistics : 20151230.v01 (using entries in the PDB archive December 30th 2015)
Refmac : 5.8.0135
CCP4 : 6.5.0
Ideal geometry (proteins) : Engh & Huber (2001)
Ideal geometry (DNA, RNA) : Parkinson et al. (1996)
Validation Pipeline (wwPDB-VP) : trunk26865

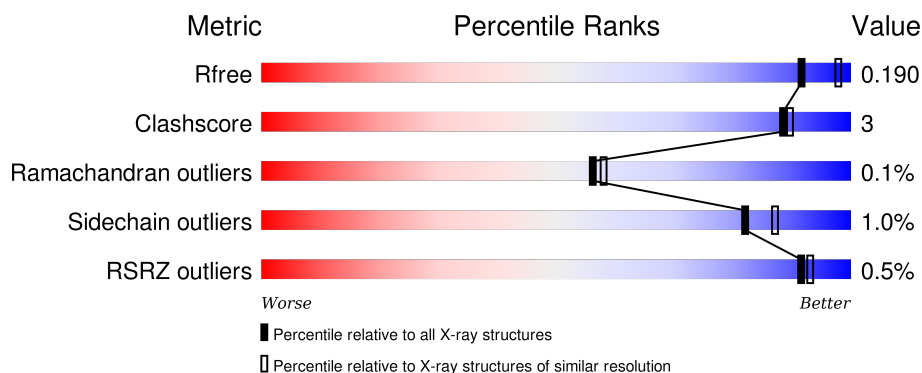
1 Overall quality at a glance

The following experimental techniques were used to determine the structure:

X-RAY DIFFRACTION

The reported resolution of this entry is 2.10 Å.

Percentile scores (ranging between 0-100) for global validation metrics of the entry are shown in the following graphic. The table shows the number of entries on which the scores are based.



Metric	Whole archive (#Entries)	Similar resolution (#Entries, resolution range(Å))
R_{free}	91344	3939 (2.10-2.10)
Clashscore	102246	4460 (2.10-2.10)
Ramachandran outliers	100387	4413 (2.10-2.10)
Sidechain outliers	100360	4414 (2.10-2.10)
RSRZ outliers	91569	3948 (2.10-2.10)

The table below summarises the geometric issues observed across the polymeric chains and their fit to the electron density. The red, orange, yellow and green segments on the lower bar indicate the fraction of residues that contain outliers for ≥ 3 , 2, 1 and 0 types of geometric quality criteria. A grey segment represents the fraction of residues that are not modelled. The numeric value for each fraction is indicated below the corresponding segment, with a dot representing fractions $\leq 5\%$. The upper red bar (where present) indicates the fraction of residues that have poor fit to the electron density. The numeric value is given above the bar.

Mol	Chain	Length	Quality of chain
1	A	845	

The following table lists non-polymeric compounds, carbohydrate monomers and non-standard residues in protein, DNA, RNA chains that are outliers for geometric or electron-density-fit criteria:

Mol	Type	Chain	Res	Chirality	Geometry	Clashes	Electron density
4	EDO	A	828	-	-	-	X

Continued on next page...

Continued from previous page...

Mol	Type	Chain	Res	Chirality	Geometry	Clashes	Electron density
4	EDO	A	830	-	-	-	X
4	EDO	A	833	-	-	-	X
4	EDO	A	834	-	-	-	X

2 Entry composition

There are 5 unique types of molecules in this entry. The entry contains 6987 atoms, of which 0 are hydrogens and 0 are deuteriums.

In the tables below, the ZeroOcc column contains the number of atoms modelled with zero occupancy, the AltConf column contains the number of residues with at least one atom in alternate conformation and the Trace column contains the number of residues modelled with at most 2 atoms.

- Molecule 1 is a protein called Xylulose 5-phosphate/fructose 6-phosphate phosphoketolase.

Mol	Chain	Residues	Atoms					ZeroOcc	AltConf	Trace
1	A	802	Total	C	N	O	S	0	0	0
			6374	4050	1083	1217	24			

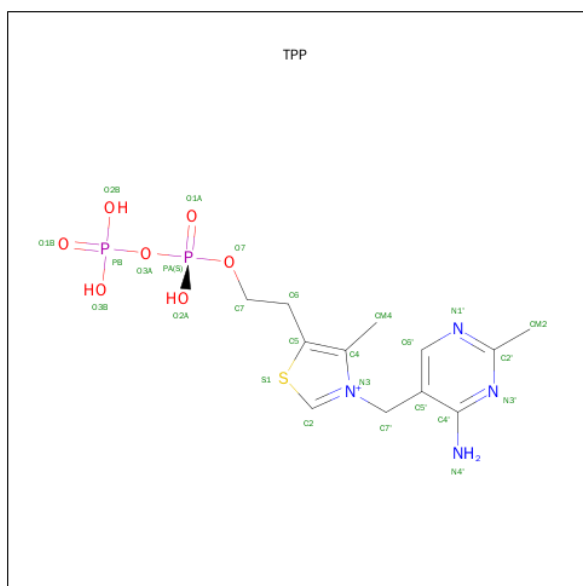
There are 21 discrepancies between the modelled and reference sequences:

Chain	Residue	Modelled	Actual	Comment	Reference
A	-19	MET	-	EXPRESSION TAG	UNP D6PAH1
A	-18	GLY	-	EXPRESSION TAG	UNP D6PAH1
A	-17	SER	-	EXPRESSION TAG	UNP D6PAH1
A	-16	SER	-	EXPRESSION TAG	UNP D6PAH1
A	-15	HIS	-	EXPRESSION TAG	UNP D6PAH1
A	-14	HIS	-	EXPRESSION TAG	UNP D6PAH1
A	-13	HIS	-	EXPRESSION TAG	UNP D6PAH1
A	-12	HIS	-	EXPRESSION TAG	UNP D6PAH1
A	-11	HIS	-	EXPRESSION TAG	UNP D6PAH1
A	-10	HIS	-	EXPRESSION TAG	UNP D6PAH1
A	-9	SER	-	EXPRESSION TAG	UNP D6PAH1
A	-8	SER	-	EXPRESSION TAG	UNP D6PAH1
A	-7	GLY	-	EXPRESSION TAG	UNP D6PAH1
A	-6	LEU	-	EXPRESSION TAG	UNP D6PAH1
A	-5	VAL	-	EXPRESSION TAG	UNP D6PAH1
A	-4	PRO	-	EXPRESSION TAG	UNP D6PAH1
A	-3	ARG	-	EXPRESSION TAG	UNP D6PAH1
A	-2	GLY	-	EXPRESSION TAG	UNP D6PAH1
A	-1	SER	-	EXPRESSION TAG	UNP D6PAH1
A	0	HIS	-	EXPRESSION TAG	UNP D6PAH1
A	553	ALA	HIS	ENGINEERED MUTATION	UNP D6PAH1

- Molecule 2 is MAGNESIUM ION (three-letter code: MG) (formula: Mg).

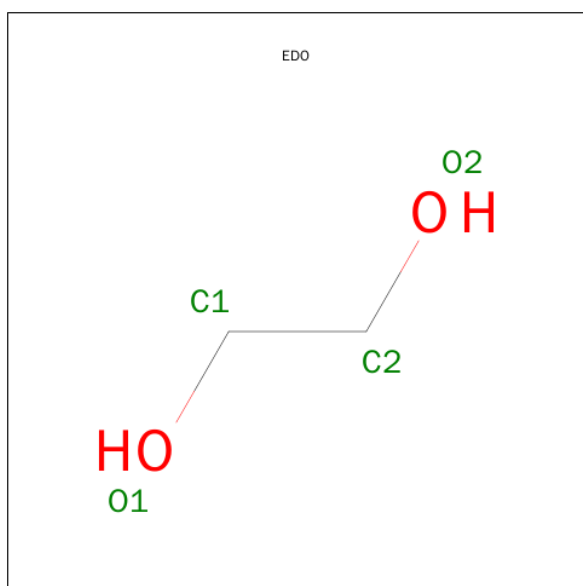
Mol	Chain	Residues	Atoms		ZeroOcc	AltConf
2	A	1	Total	Mg	0	0
			1	1		

- Molecule 3 is THIAMINE DIPHOSPHATE (three-letter code: TPP) (formula: $C_{12}H_{19}N_4O_7P_2S$).



Mol	Chain	Residues	Atoms						ZeroOcc	AltConf
3	A	1	Total	C	N	O	P	S	0	0
			26	12	4	7	2	1		

- Molecule 4 is 1,2-ETHANEDIOL (three-letter code: EDO) (formula: $C_2H_6O_2$).



Mol	Chain	Residues	Atoms	ZeroOcc	AltConf
4	A	1	Total C O 4 2 2	0	0
4	A	1	Total C O 4 2 2	0	0
4	A	1	Total C O 4 2 2	0	0
4	A	1	Total C O 4 2 2	0	0
4	A	1	Total C O 4 2 2	0	0
4	A	1	Total C O 4 2 2	0	0
4	A	1	Total C O 4 2 2	0	0
4	A	1	Total C O 4 2 2	0	0
4	A	1	Total C O 4 2 2	0	0
4	A	1	Total C O 4 2 2	0	0
4	A	1	Total C O 4 2 2	0	0

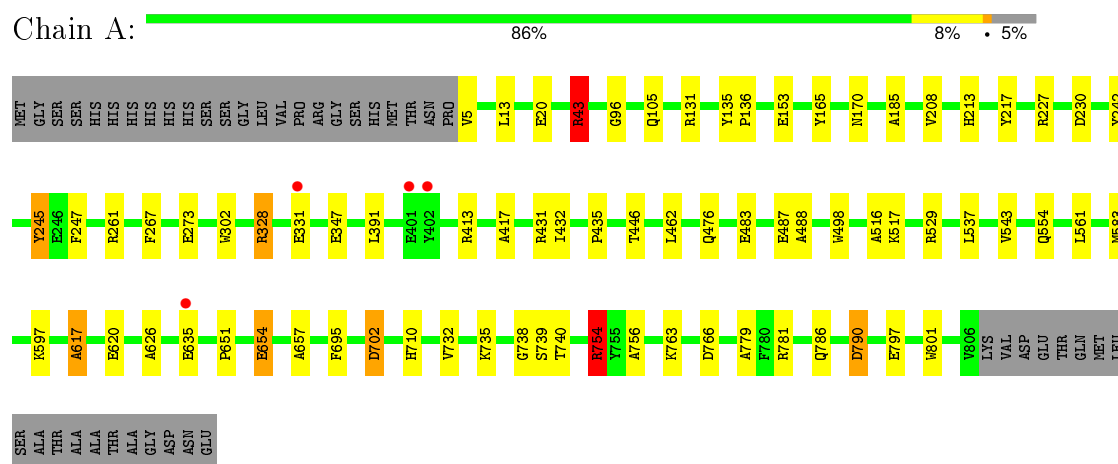
- Molecule 5 is water.

Mol	Chain	Residues	Atoms	ZeroOcc	AltConf
5	A	542	Total O 542 542	0	0

3 Residue-property plots [i](#)

These plots are drawn for all protein, RNA and DNA chains in the entry. The first graphic for a chain summarises the proportions of errors displayed in the second graphic. The second graphic shows the sequence view annotated by issues in geometry and electron density. Residues are color-coded according to the number of geometric quality criteria for which they contain at least one outlier: green = 0, yellow = 1, orange = 2 and red = 3 or more. A red dot above a residue indicates a poor fit to the electron density ($RSRZ > 2$). Stretches of 2 or more consecutive residues without any outlier are shown as a green connector. Residues present in the sample, but not in the model, are shown in grey.

- Molecule 1: Xylulose 5-phosphate/fructose 6-phosphate phosphoketolase



4 Data and refinement statistics

Property	Value	Source
Space group	I 4 2 2	Depositor
Cell constants a, b, c, α , β , γ	175.08 Å 175.08 Å 164.00 Å 90.00° 90.00° 90.00°	Depositor
Resolution (Å)	38.61 – 2.10 38.61 – 2.10	Depositor EDS
% Data completeness (in resolution range)	99.7 (38.61-2.10) 99.7 (38.61-2.10)	Depositor EDS
R_{merge}	0.08	Depositor
R_{sym}	(Not available)	Depositor
$\langle I/\sigma(I) \rangle$ ¹	6.63 (at 2.10 Å)	Xtriage
Refinement program	REFMAC 5.5.0109	Depositor
R, R_{free}	0.158 , 0.191 0.156 , 0.190	Depositor DCC
R_{free} test set	3719 reflections (5.31%)	DCC
Wilson B-factor (Å ²)	28.2	Xtriage
Anisotropy	0.127	Xtriage
Bulk solvent k_{sol} (e/Å ³), B_{sol} (Å ²)	0.34 , 36.3	EDS
Estimated twinning fraction	No twinning to report.	Xtriage
L-test for twinning ²	$\langle L \rangle = 0.50$, $\langle L^2 \rangle = 0.33$	Xtriage
Outliers	0 of 73933 reflections	Xtriage
F_o, F_c correlation	0.97	EDS
Total number of atoms	6987	wwPDB-VP
Average B, all atoms (Å ²)	29.0	wwPDB-VP

Xtriage's analysis on translational NCS is as follows: *The largest off-origin peak in the Patterson function is 2.63% of the height of the origin peak. No significant pseudotranslation is detected.*

¹Intensities estimated from amplitudes.

²Theoretical values of $\langle |L| \rangle$, $\langle L^2 \rangle$ for acentric reflections are 0.5, 0.375 respectively for untwinned datasets, and 0.333, 0.2 for perfectly twinned datasets.

5 Model quality

5.1 Standard geometry

Bond lengths and bond angles in the following residue types are not validated in this section: MG, EDO, TPP

The Z score for a bond length (or angle) is the number of standard deviations the observed value is removed from the expected value. A bond length (or angle) with $|Z| > 5$ is considered an outlier worth inspection. RMSZ is the root-mean-square of all Z scores of the bond lengths (or angles).

Mol	Chain	Bond lengths		Bond angles	
		RMSZ	$\# Z > 5$	RMSZ	$\# Z > 5$
1	A	1.36	23/6547 (0.4%)	1.00	17/8901 (0.2%)

Chiral center outliers are detected by calculating the chiral volume of a chiral center and verifying if the center is modelled as a planar moiety or with the opposite hand. A planarity outlier is detected by checking planarity of atoms in a peptide group, atoms in a mainchain group or atoms of a sidechain that are expected to be planar.

Mol	Chain	#Chirality outliers	#Planarity outliers
1	A	0	1

All (23) bond length outliers are listed below:

Mol	Chain	Res	Type	Atoms	Z	Observed(Å)	Ideal(Å)
1	A	732	VAL	CB-CG2	7.12	1.67	1.52
1	A	779	ALA	CA-CB	7.04	1.67	1.52
1	A	654	GLU	CB-CG	6.31	1.64	1.52
1	A	417	ALA	CA-CB	6.14	1.65	1.52
1	A	617	ALA	CA-CB	6.02	1.65	1.52
1	A	261	ARG	CG-CD	5.99	1.67	1.51
1	A	5	VAL	N-CA	5.97	1.58	1.46
1	A	165	TYR	CD1-CE1	5.93	1.48	1.39
1	A	208	VAL	CB-CG1	5.86	1.65	1.52
1	A	245	TYR	CG-CD1	5.48	1.46	1.39
1	A	331	GLU	CG-CD	5.48	1.60	1.51
1	A	247	PHE	CE2-CZ	5.47	1.47	1.37
1	A	695	PHE	CE2-CZ	5.46	1.47	1.37
1	A	242	TYR	CD2-CE2	5.45	1.47	1.39
1	A	20	GLU	CG-CD	5.33	1.59	1.51
1	A	517	LYS	CD-CE	5.25	1.64	1.51
1	A	488	ALA	CA-CB	5.23	1.63	1.52
1	A	347	GLU	CB-CG	5.21	1.62	1.52

Continued on next page...

Continued from previous page...

Mol	Chain	Res	Type	Atoms	Z	Observed(Å)	Ideal(Å)
1	A	543	VAL	CB-CG1	5.19	1.63	1.52
1	A	185	ALA	CA-CB	5.18	1.63	1.52
1	A	217	TYR	CD1-CE1	5.05	1.47	1.39
1	A	230	ASP	CG-OD1	5.05	1.36	1.25
1	A	516	ALA	CA-CB	5.03	1.63	1.52

All (17) bond angle outliers are listed below:

Mol	Chain	Res	Type	Atoms	Z	Observed(°)	Ideal(°)
1	A	328	ARG	NE-CZ-NH2	-13.28	113.66	120.30
1	A	328	ARG	NE-CZ-NH1	12.46	126.53	120.30
1	A	754	ARG	NE-CZ-NH2	-9.34	115.63	120.30
1	A	43	ARG	NE-CZ-NH2	-7.43	116.58	120.30
1	A	227	ARG	NE-CZ-NH1	7.36	123.98	120.30
1	A	766	ASP	CB-CG-OD2	-6.72	112.25	118.30
1	A	763	LYS	CD-CE-NZ	6.44	126.51	111.70
1	A	529	ARG	NE-CZ-NH2	-6.39	117.10	120.30
1	A	790	ASP	CB-CG-OD1	5.84	123.56	118.30
1	A	328	ARG	CG-CD-NE	-5.61	100.02	111.80
1	A	328	ARG	CD-NE-CZ	5.49	131.29	123.60
1	A	702	ASP	CB-CG-OD1	5.31	123.08	118.30
1	A	462	LEU	CB-CG-CD2	5.24	119.91	111.00
1	A	766	ASP	CB-CG-OD1	5.13	122.92	118.30
1	A	413	ARG	NE-CZ-NH2	-5.13	117.73	120.30
1	A	754	ARG	NE-CZ-NH1	5.13	122.86	120.30
1	A	227	ARG	NE-CZ-NH2	-5.09	117.75	120.30

There are no chirality outliers.

All (1) planarity outliers are listed below:

Mol	Chain	Res	Type	Group
1	A	597	LYS	Peptide

5.2 Too-close contacts

In the following table, the Non-H and H(model) columns list the number of non-hydrogen atoms and hydrogen atoms in the chain respectively. The H(added) column lists the number of hydrogen atoms added and optimized by MolProbity. The Clashes column lists the number of clashes within the asymmetric unit, whereas Symm-Clashes lists symmetry related clashes.

Mol	Chain	Non-H	H(model)	H(added)	Clashes	Symm-Clashes
1	A	6374	0	6083	29	0
2	A	1	0	0	0	0
3	A	26	0	16	3	0
4	A	44	0	66	3	0
5	A	542	0	0	3	0
All	All	6987	0	6165	32	0

The all-atom clashscore is defined as the number of clashes found per 1000 atoms (including hydrogen atoms). The all-atom clashscore for this structure is 3.

All (32) close contacts within the same asymmetric unit are listed below, sorted by their clash magnitude.

Atom-1	Atom-2	Interatomic distance (Å)	Clash overlap (Å)
3:A:827:TPP:HN42	3:A:827:TPP:C2	1.93	0.82
1:A:635:GLU:OE1	1:A:635:GLU:HA	2.02	0.60
1:A:432:ILE:CD1	1:A:446:THR:HG21	2.33	0.58
1:A:273:GLU:OE1	5:A:1221:HOH:O	2.17	0.57
1:A:328:ARG:HG2	1:A:328:ARG:O	2.05	0.55
1:A:245:TYR:OH	1:A:273:GLU:OE2	2.20	0.55
1:A:735:LYS:HD3	5:A:1348:HOH:O	2.07	0.55
1:A:654:GLU:OE1	1:A:754:ARG:HD3	2.09	0.52
1:A:739:SER:OG	1:A:740:THR:N	2.43	0.52
1:A:797:GLU:OE1	4:A:836:EDO:O1	2.28	0.51
1:A:554:GLN:HE22	1:A:738:GLY:HA3	1.76	0.51
1:A:657:ALA:HA	1:A:801:TRP:CZ2	2.46	0.50
1:A:96:GLY:HA3	1:A:153:GLU:O	2.12	0.50
1:A:583:MET:HA	1:A:617:ALA:HB1	1.94	0.49
1:A:654:GLU:OE1	1:A:754:ARG:CD	2.60	0.49
1:A:43:ARG:HD3	5:A:1336:HOH:O	2.14	0.48
1:A:620:GLU:HG2	1:A:626:ALA:CB	2.43	0.47
1:A:131:ARG:HD2	4:A:832:EDO:O1	2.15	0.47
1:A:756:ALA:HB2	1:A:781:ARG:CZ	2.45	0.46
1:A:702:ASP:OD1	4:A:828:EDO:O1	2.33	0.46
1:A:13:LEU:HD23	1:A:13:LEU:HA	1.74	0.44
1:A:498:TRP:CE2	1:A:537:LEU:HD13	2.53	0.44
1:A:170:ASN:HD21	1:A:431:ARG:HH11	1.66	0.44
1:A:483:GLU:OE2	1:A:487:GLU:OE2	2.36	0.44
1:A:651:PRO:HG2	1:A:710:HIS:HA	2.00	0.43
3:A:827:TPP:H2	3:A:827:TPP:HN42	1.77	0.43
1:A:786:GLN:NE2	1:A:790:ASP:OD1	2.48	0.43
1:A:483:GLU:O	1:A:487:GLU:HG3	2.20	0.41
3:A:827:TPP:N4'	3:A:827:TPP:C2	2.73	0.41

Continued on next page...

Continued from previous page...

Atom-1	Atom-2	Interatomic distance (Å)	Clash overlap (Å)
1:A:432:ILE:HD11	1:A:446:THR:HG21	2.03	0.41
1:A:435:PRO:HA	1:A:476:GLN:O	2.20	0.40
1:A:135:TYR:CG	1:A:136:PRO:HD2	2.57	0.40

There are no symmetry-related clashes.

5.3 Torsion angles [i](#)

5.3.1 Protein backbone [i](#)

In the following table, the Percentiles column shows the percent Ramachandran outliers of the chain as a percentile score with respect to all X-ray entries followed by that with respect to entries of similar resolution.

The Analysed column shows the number of residues for which the backbone conformation was analysed, and the total number of residues.

Mol	Chain	Analysed	Favoured	Allowed	Outliers	Percentiles
1	A	800/845 (95%)	768 (96%)	31 (4%)	1 (0%)	56 58

All (1) Ramachandran outliers are listed below:

Mol	Chain	Res	Type
1	A	302	TRP

5.3.2 Protein sidechains [i](#)

In the following table, the Percentiles column shows the percent sidechain outliers of the chain as a percentile score with respect to all X-ray entries followed by that with respect to entries of similar resolution.

The Analysed column shows the number of residues for which the sidechain conformation was analysed, and the total number of residues.

Mol	Chain	Analysed	Rotameric	Outliers	Percentiles
1	A	676/711 (95%)	669 (99%)	7 (1%)	82 87

All (7) residues with a non-rotameric sidechain are listed below:

Mol	Chain	Res	Type
1	A	43	ARG
1	A	105	GLN
1	A	213	HIS
1	A	267	PHE
1	A	391	LEU
1	A	561	LEU
1	A	754	ARG

Some sidechains can be flipped to improve hydrogen bonding and reduce clashes. All (5) such sidechains are listed below:

Mol	Chain	Res	Type
1	A	39	GLN
1	A	170	ASN
1	A	441	ASN
1	A	472	GLN
1	A	554	GLN

5.3.3 RNA [i](#)

There are no RNA molecules in this entry.

5.4 Non-standard residues in protein, DNA, RNA chains [i](#)

There are no non-standard protein/DNA/RNA residues in this entry.

5.5 Carbohydrates [i](#)

There are no carbohydrates in this entry.

5.6 Ligand geometry [i](#)

Of 13 ligands modelled in this entry, 1 is monoatomic - leaving 12 for Mogul analysis.

In the following table, the Counts columns list the number of bonds (or angles) for which Mogul statistics could be retrieved, the number of bonds (or angles) that are observed in the model and the number of bonds (or angles) that are defined in the chemical component dictionary. The Link column lists molecule types, if any, to which the group is linked. The Z score for a bond length (or angle) is the number of standard deviations the observed value is removed from the expected value. A bond length (or angle) with $|Z| > 2$ is considered an outlier worth inspection. RMSZ is the root-mean-square of all Z scores of the bond lengths (or angles).

Mol	Type	Chain	Res	Link	Bond lengths			Bond angles		
					Counts	RMSZ	# Z > 2	Counts	RMSZ	# Z > 2
3	TPP	A	827	2	20,27,27	1.49	5 (25%)	31,40,40	2.05	8 (25%)
4	EDO	A	828	-	3,3,3	0.74	0	2,2,2	0.13	0
4	EDO	A	829	-	3,3,3	0.66	0	2,2,2	0.21	0
4	EDO	A	830	-	3,3,3	0.61	0	2,2,2	1.01	0
4	EDO	A	831	-	3,3,3	0.47	0	2,2,2	0.63	0
4	EDO	A	832	-	3,3,3	0.58	0	2,2,2	0.52	0
4	EDO	A	833	-	3,3,3	0.59	0	2,2,2	0.37	0
4	EDO	A	834	-	3,3,3	0.58	0	2,2,2	1.26	0
4	EDO	A	835	-	3,3,3	0.46	0	2,2,2	0.88	0
4	EDO	A	836	-	3,3,3	0.23	0	2,2,2	0.95	0
4	EDO	A	837	-	3,3,3	0.64	0	2,2,2	0.89	0
4	EDO	A	838	-	3,3,3	0.62	0	2,2,2	0.33	0

In the following table, the Chirals column lists the number of chiral outliers, the number of chiral centers analysed, the number of these observed in the model and the number defined in the chemical component dictionary. Similar counts are reported in the Torsion and Rings columns. '-' means no outliers of that kind were identified.

Mol	Type	Chain	Res	Link	Chirals	Torsions	Rings
3	TPP	A	827	2	-	0/16/17/17	0/2/2/2
4	EDO	A	828	-	-	0/1/1/1	0/0/0/0
4	EDO	A	829	-	-	0/1/1/1	0/0/0/0
4	EDO	A	830	-	-	0/1/1/1	0/0/0/0
4	EDO	A	831	-	-	0/1/1/1	0/0/0/0
4	EDO	A	832	-	-	0/1/1/1	0/0/0/0
4	EDO	A	833	-	-	0/1/1/1	0/0/0/0
4	EDO	A	834	-	-	0/1/1/1	0/0/0/0
4	EDO	A	835	-	-	0/1/1/1	0/0/0/0
4	EDO	A	836	-	-	0/1/1/1	0/0/0/0
4	EDO	A	837	-	-	0/1/1/1	0/0/0/0
4	EDO	A	838	-	-	0/1/1/1	0/0/0/0

All (5) bond length outliers are listed below:

Mol	Chain	Res	Type	Atoms	Z	Observed(Å)	Ideal(Å)
3	A	827	TPP	C4-N3	-3.20	1.36	1.39
3	A	827	TPP	PA-O1A	-2.03	1.43	1.51
3	A	827	TPP	C2'-N1'	2.41	1.38	1.34
3	A	827	TPP	C4'-N3'	2.59	1.39	1.35
3	A	827	TPP	C7'-C5'	2.81	1.57	1.51

All (8) bond angle outliers are listed below:

Mol	Chain	Res	Type	Atoms	Z	Observed($^{\circ}$)	Ideal($^{\circ}$)
3	A	827	TPP	CM4-C4-C5	-4.56	118.66	128.90
3	A	827	TPP	C5'-C7'-N3	-3.84	106.91	113.33
3	A	827	TPP	C5'-C4'-N4'	-2.34	118.83	122.25
3	A	827	TPP	C5'-C6'-N1'	-2.06	120.28	123.86
3	A	827	TPP	C6-C5-C4	3.15	130.39	127.56
3	A	827	TPP	C6'-N1'-C2'	3.20	121.36	115.77
3	A	827	TPP	CM2-C2'-N1'	3.96	121.78	117.03
3	A	827	TPP	C5-C4-N3	4.56	117.73	107.69

There are no chirality outliers.

There are no torsion outliers.

There are no ring outliers.

4 monomers are involved in 6 short contacts:

Mol	Chain	Res	Type	Clashes	Symm-Clashes
3	A	827	TPP	3	0
4	A	828	EDO	1	0
4	A	832	EDO	1	0
4	A	836	EDO	1	0

5.7 Other polymers [i](#)

There are no such residues in this entry.

5.8 Polymer linkage issues [i](#)

There are no chain breaks in this entry.

6 Fit of model and data [i](#)

6.1 Protein, DNA and RNA chains [i](#)

In the following table, the column labelled '#RSRZ > 2' contains the number (and percentage) of RSRZ outliers, followed by percent RSRZ outliers for the chain as percentile scores relative to all X-ray entries and entries of similar resolution. The OWAB column contains the minimum, median, 95th percentile and maximum values of the occupancy-weighted average B-factor per residue. The column labelled 'Q < 0.9' lists the number of (and percentage) of residues with an average occupancy less than 0.9.

Mol	Chain	Analysed	<RSRZ>	#RSRZ>2	OWAB(Å ²)	Q<0.9
1	A	802/845 (94%)	-0.57	4 (0%) 91 93	19, 27, 42, 59	0

All (4) RSRZ outliers are listed below:

Mol	Chain	Res	Type	RSRZ
1	A	331	GLU	2.5
1	A	402	TYR	2.4
1	A	401	GLU	2.2
1	A	635	GLU	2.0

6.2 Non-standard residues in protein, DNA, RNA chains [i](#)

There are no non-standard protein/DNA/RNA residues in this entry.

6.3 Carbohydrates [i](#)

There are no carbohydrates in this entry.

6.4 Ligands [i](#)

In the following table, the Atoms column lists the number of modelled atoms in the group and the number defined in the chemical component dictionary. LLDF column lists the quality of electron density of the group with respect to its neighbouring residues in protein, DNA or RNA chains. The B-factors column lists the minimum, median, 95th percentile and maximum values of B factors of atoms in the group. The column labelled 'Q < 0.9' lists the number of atoms with occupancy less than 0.9.

Mol	Type	Chain	Res	Atoms	RSCC	RSR	LLDF	B-factors(Å ²)	Q<0.9
4	EDO	A	834	4/4	0.93	0.13	2.96	43,43,47,48	0

Continued on next page...

Continued from previous page...

Mol	Type	Chain	Res	Atoms	RSCC	RSR	LLDF	B-factors(\AA^2)	Q<0.9
4	EDO	A	828	4/4	0.90	0.25	2.75	48,49,52,52	0
4	EDO	A	833	4/4	0.98	0.18	2.32	40,40,42,44	0
4	EDO	A	830	4/4	0.87	0.24	2.22	64,67,68,70	0
4	EDO	A	837	4/4	0.98	0.09	0.75	27,27,27,32	0
2	MG	A	826	1/1	0.99	0.08	-0.26	23,23,23,23	0
4	EDO	A	829	4/4	0.91	0.12	-0.30	54,55,55,55	0
4	EDO	A	838	4/4	0.97	0.08	-0.66	35,38,40,40	0
3	TPP	A	827	26/26	0.99	0.07	-0.86	20,24,32,38	0
4	EDO	A	836	4/4	0.92	0.13	-	42,47,49,52	0
4	EDO	A	831	4/4	0.87	0.25	-	58,60,61,61	0
4	EDO	A	832	4/4	0.94	0.14	-	51,53,54,55	0
4	EDO	A	835	4/4	0.88	0.12	-	54,55,55,57	0

6.5 Other polymers [i](#)

There are no such residues in this entry.