



# Full wwPDB X-ray Structure Validation Report ⓘ

Feb 1, 2016 – 02:48 PM GMT

PDB ID : 4AJE  
Title : rat LDHA in complex with 2-(4-bromophenoxy)propanedioic acid  
Authors : Tucker, J.A.; Brassington, C.; Hassall, G.; Vogtherr, M.; Ward, R.; Tart, J.; Davies, G.; Pearson, S.  
Deposited on : 2012-02-16  
Resolution : 2.35 Å(reported)

This is a Full wwPDB X-ray Structure Validation Report for a publicly released PDB entry.  
We welcome your comments at [validation@mail.wwpdb.org](mailto:validation@mail.wwpdb.org)  
A user guide is available at  
<http://wwpdb.org/validation/2016/XrayValidationReportHelp>  
with specific help available everywhere you see the ⓘ symbol.

---

The following versions of software and data (see [references ⓘ](#)) were used in the production of this report:

MolProbity : 4.02b-467  
Mogul : 1.7 (RC4), CSD as536be (2015)  
Xtriage (Phenix) : 1.9-1692  
EDS : rb-20026688  
Percentile statistics : 20151230.v01 (using entries in the PDB archive December 30th 2015)  
Refmac : 5.8.0135  
CCP4 : 6.5.0  
Ideal geometry (proteins) : Engh & Huber (2001)  
Ideal geometry (DNA, RNA) : Parkinson et al. (1996)  
Validation Pipeline (wwPDB-VP) : trunk26865

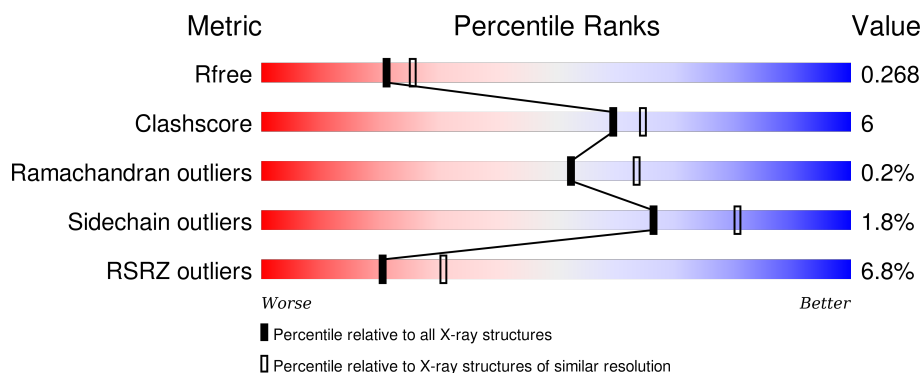
# 1 Overall quality at a glance ⓘ

The following experimental techniques were used to determine the structure:

## *X-RAY DIFFRACTION*

The reported resolution of this entry is 2.35 Å.

Percentile scores (ranging between 0-100) for global validation metrics of the entry are shown in the following graphic. The table shows the number of entries on which the scores are based.



Metric	Whole archive (#Entries)	Similar resolution (#Entries, resolution range(Å))
$R_{free}$	91344	1352 (2.38-2.34)
Clashscore	102246	1456 (2.38-2.34)
Ramachandran outliers	100387	1435 (2.38-2.34)
Sidechain outliers	100360	1436 (2.38-2.34)
RSRZ outliers	91569	1358 (2.38-2.34)

The table below summarises the geometric issues observed across the polymeric chains and their fit to the electron density. The red, orange, yellow and green segments on the lower bar indicate the fraction of residues that contain outliers for  $\geq 3$ , 2, 1 and 0 types of geometric quality criteria. A grey segment represents the fraction of residues that are not modelled. The numeric value for each fraction is indicated below the corresponding segment, with a dot representing fractions  $\leq 5\%$ . The upper red bar (where present) indicates the fraction of residues that have poor fit to the electron density. The numeric value is given above the bar.

Mol	Chain	Length	Quality of chain
1	A	331	<div> <div>7%</div> <div>85%</div> <div>13%</div> <div>..</div> </div>
1	B	331	<div> <div>5%</div> <div>87%</div> <div>13%</div> </div>
1	C	331	<div> <div>8%</div> <div>91%</div> <div>9%</div> </div>
1	D	331	<div> <div>8%</div> <div>85%</div> <div>14%</div> <div>.</div> </div>

The following table lists non-polymeric compounds, carbohydrate monomers and non-standard

residues in protein, DNA, RNA chains that are outliers for geometric or electron-density-fit criteria:

Mol	Type	Chain	Res	Chirality	Geometry	Clashes	Electron density
2	2B4	A	1332	-	-	X	-
4	GOL	C	1332	-	-	-	X
4	GOL	D	1332	-	-	-	X

## 2 Entry composition [i](#)

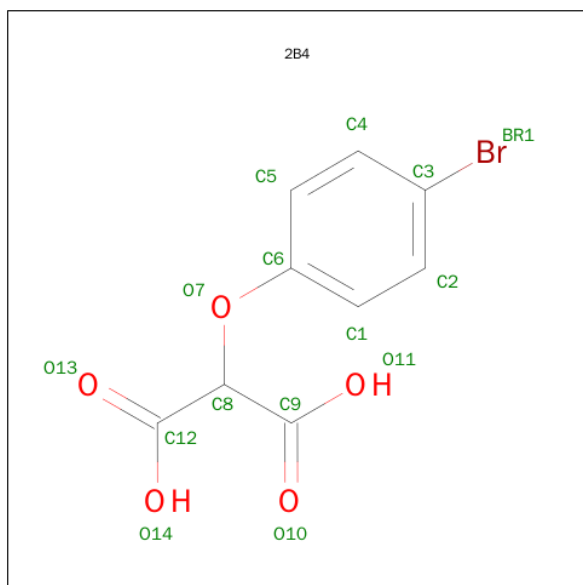
There are 5 unique types of molecules in this entry. The entry contains 10872 atoms, of which 0 are hydrogens and 0 are deuteriums.

In the tables below, the ZeroOcc column contains the number of atoms modelled with zero occupancy, the AltConf column contains the number of residues with at least one atom in alternate conformation and the Trace column contains the number of residues modelled with at most 2 atoms.

- Molecule 1 is a protein called L-LACTATE DEHYDROGENASE A CHAIN.

Mol	Chain	Residues	Atoms					ZeroOcc	AltConf	Trace
1	A	327	Total	C	N	O	S	0	1	0
			2481	1587	419	463	12			
1	B	330	Total	C	N	O	S	0	3	0
			2529	1616	428	473	12			
1	C	330	Total	C	N	O	S	0	3	0
			2525	1614	426	473	12			
1	D	330	Total	C	N	O	S	0	4	0
			2519	1610	423	473	13			

- Molecule 2 is 2-(4-BROMANYLPHENOXY)PROPANEDIOIC ACID (three-letter code: 2B4) (formula: C<sub>9</sub>H<sub>7</sub>BrO<sub>5</sub>).



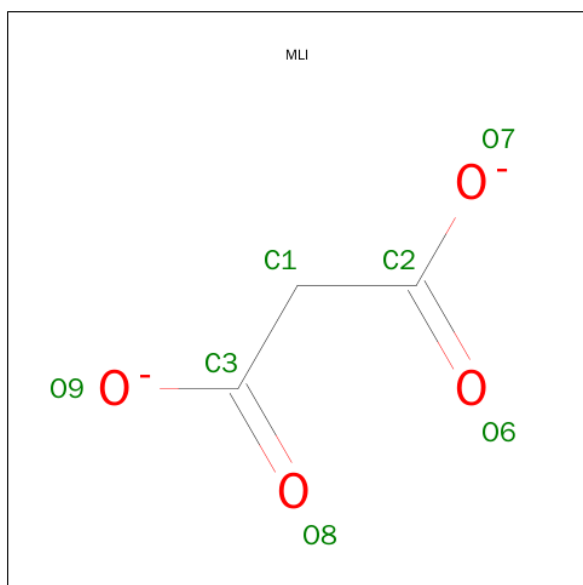
Mol	Chain	Residues	Atoms				ZeroOcc	AltConf
2	A	1	Total	Br	C	O	0	0
			15	1	9	5		
2	B	1	Total	Br	C	O	0	0
			15	1	9	5		

*Continued on next page...*

*Continued from previous page...*

Mol	Chain	Residues	Atoms				ZeroOcc	AltConf
2	C	1	Total	Br	C	O	0	0
			15	1	9	5		
2	D	1	Total	Br	C	O	0	0
			15	1	9	5		

- Molecule 3 is MALONATE ION (three-letter code: MLI) (formula:  $\text{C}_3\text{H}_2\text{O}_4$ ).



Mol	Chain	Residues	Atoms			ZeroOcc	AltConf
3	A	1	Total	C	O	0	0
			7	3	4		
3	A	1	Total	C	O	0	0
			7	3	4		
3	A	1	Total	C	O	0	0
			7	3	4		
3	B	1	Total	C	O	0	0
			7	3	4		
3	C	1	Total	C	O	0	0
			7	3	4		

- Molecule 4 is GLYCEROL (three-letter code: GOL) (formula:  $\text{C}_3\text{H}_8\text{O}_3$ ).



Mol	Chain	Residues	Atoms			ZeroOcc	AltConf
4	B	1	Total	C	O	0	0
			6	3	3		
4	C	1	Total	C	O	0	0
			6	3	3		
4	D	1	Total	C	O	0	0
			6	3	3		

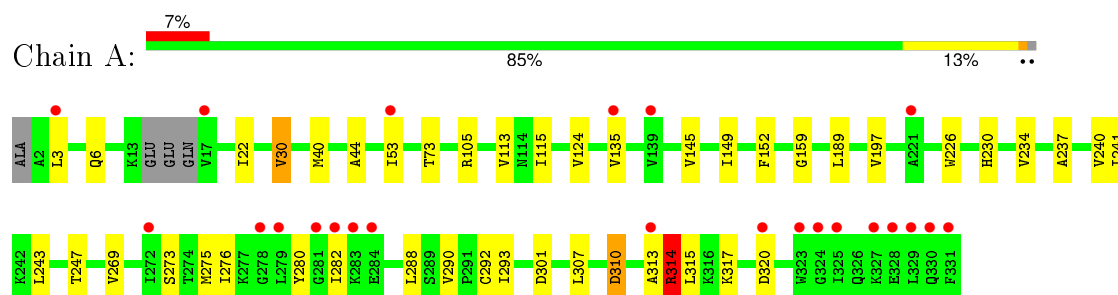
- Molecule 5 is water.

Mol	Chain	Residues	Atoms		ZeroOcc	AltConf
5	A	197	Total	O	0	0
			197	197		
5	B	215	Total	O	0	0
			215	215		
5	C	172	Total	O	0	0
			172	172		
5	D	121	Total	O	0	0
			121	121		

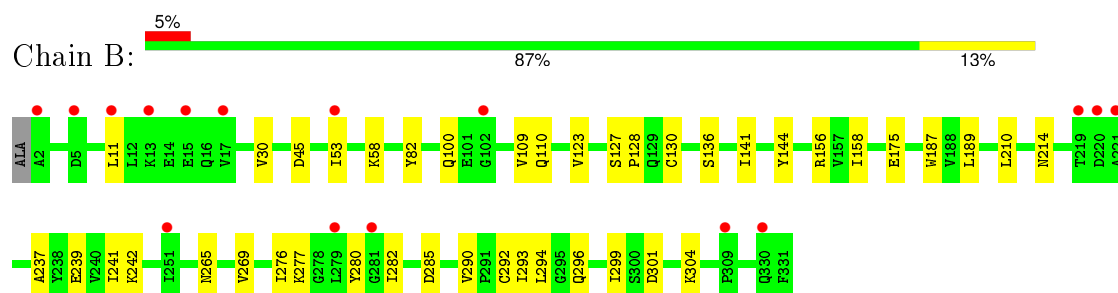
### 3 Residue-property plots

These plots are drawn for all protein, RNA and DNA chains in the entry. The first graphic for a chain summarises the proportions of errors displayed in the second graphic. The second graphic shows the sequence view annotated by issues in geometry and electron density. Residues are color-coded according to the number of geometric quality criteria for which they contain at least one outlier: green = 0, yellow = 1, orange = 2 and red = 3 or more. A red dot above a residue indicates a poor fit to the electron density ( $\text{RSRZ} > 2$ ). Stretches of 2 or more consecutive residues without any outlier are shown as a green connector. Residues present in the sample, but not in the model, are shown in grey.

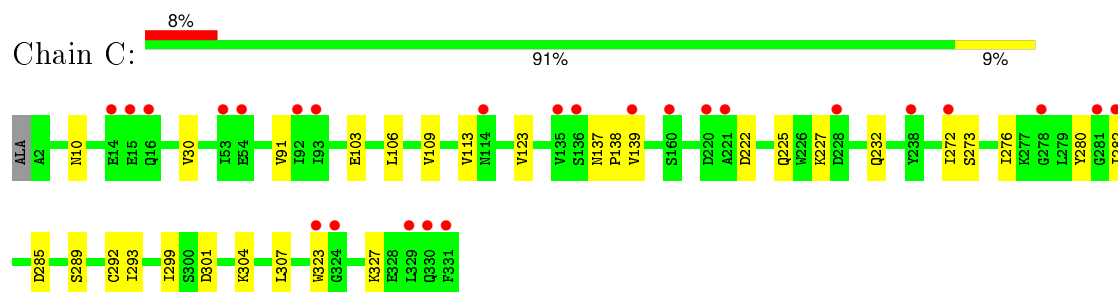
#### • Molecule 1: L-LACTATE DEHYDROGENASE A CHAIN



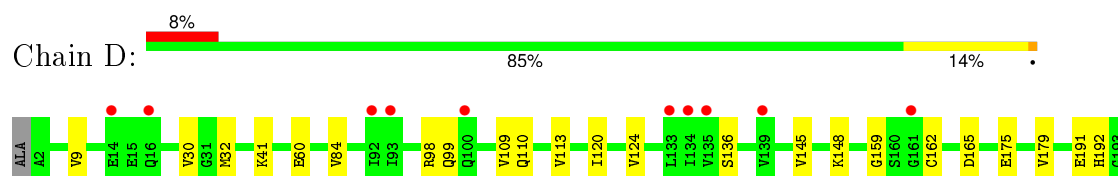
#### • Molecule 1: L-LACTATE DEHYDROGENASE A CHAIN

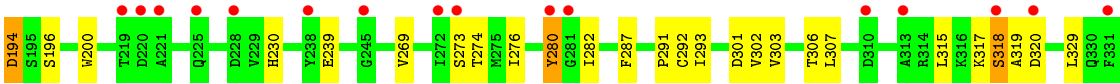


#### • Molecule 1: L-LACTATE DEHYDROGENASE A CHAIN



#### • Molecule 1: L-LACTATE DEHYDROGENASE A CHAIN





## 4 Data and refinement statistics

Property	Value	Source
Space group	P 1 21 1	Depositor
Cell constants a, b, c, $\alpha$ , $\beta$ , $\gamma$	62.30 Å 82.51 Å 129.11 Å 90.00° 96.19° 90.00°	Depositor
Resolution (Å)	28.99 – 2.35 28.99 – 2.35	Depositor EDS
% Data completeness (in resolution range)	99.0 (28.99-2.35) 99.0 (28.99-2.35)	Depositor EDS
$R_{merge}$	0.09	Depositor
$R_{sym}$	(Not available)	Depositor
$\langle I/\sigma(I) \rangle$ <sup>1</sup>	2.88 (at 2.36 Å)	Xtriage
Refinement program	REFMAC 5.6.0117	Depositor
R, $R_{free}$	0.202 , 0.272 0.201 , 0.268	Depositor DCC
$R_{free}$ test set	2732 reflections (5.35%)	DCC
Wilson B-factor (Å <sup>2</sup> )	33.7	Xtriage
Anisotropy	0.084	Xtriage
Bulk solvent $k_{sol}$ (e/Å <sup>3</sup> ), $B_{sol}$ (Å <sup>2</sup> )	0.34 , 45.3	EDS
Estimated twinning fraction	No twinning to report.	Xtriage
L-test for twinning <sup>2</sup>	$\langle  L  \rangle = 0.54$ , $\langle L^2 \rangle = 0.38$	Xtriage
Outliers	1 of 53806 reflections (0.002%)	Xtriage
$F_o, F_c$ correlation	0.95	EDS
Total number of atoms	10872	wwPDB-VP
Average B, all atoms (Å <sup>2</sup> )	31.0	wwPDB-VP

Xtriage's analysis on translational NCS is as follows: *The largest off-origin peak in the Patterson function is 4.45% of the height of the origin peak. No significant pseudotranslation is detected.*

<sup>1</sup>Intensities estimated from amplitudes.

<sup>2</sup>Theoretical values of  $\langle |L| \rangle$ ,  $\langle L^2 \rangle$  for acentric reflections are 0.5, 0.375 respectively for untwinned datasets, and 0.333, 0.2 for perfectly twinned datasets.

## 5 Model quality [i](#)

### 5.1 Standard geometry [i](#)

Bond lengths and bond angles in the following residue types are not validated in this section: GOL, 2B4, MLI

The Z score for a bond length (or angle) is the number of standard deviations the observed value is removed from the expected value. A bond length (or angle) with  $|Z| > 5$  is considered an outlier worth inspection. RMSZ is the root-mean-square of all Z scores of the bond lengths (or angles).

Mol	Chain	Bond lengths		Bond angles	
		RMSZ	$\# Z  > 5$	RMSZ	$\# Z  > 5$
1	A	0.70	1/2523 (0.0%)	0.79	2/3427 (0.1%)
1	B	0.70	1/2572 (0.0%)	0.77	1/3492 (0.0%)
1	C	0.67	0/2568	0.73	0/3487
1	D	0.66	1/2562 (0.0%)	0.74	0/3483
All	All	0.68	3/10225 (0.0%)	0.76	3/13889 (0.0%)

All (3) bond length outliers are listed below:

Mol	Chain	Res	Type	Atoms	Z	Observed(Å)	Ideal(Å)
1	B	187	TRP	CD2-CE2	5.39	1.47	1.41
1	A	226	TRP	CD2-CE2	5.05	1.47	1.41
1	D	200	TRP	CD2-CE2	5.05	1.47	1.41

All (3) bond angle outliers are listed below:

Mol	Chain	Res	Type	Atoms	Z	Observed(°)	Ideal(°)
1	A	40	MET	CA-CB-CG	-6.55	102.16	113.30
1	A	314	ARG	NE-CZ-NH1	6.12	123.36	120.30
1	B	45	ASP	CB-CG-OD1	5.11	122.90	118.30

There are no chirality outliers.

There are no planarity outliers.

### 5.2 Too-close contacts [i](#)

In the following table, the Non-H and H(model) columns list the number of non-hydrogen atoms and hydrogen atoms in the chain respectively. The H(added) column lists the number of hydrogen atoms added and optimized by MolProbity. The Clashes column lists the number of clashes within the asymmetric unit, whereas Symm-Clashes lists symmetry related clashes.

Mol	Chain	Non-H	H(model)	H(added)	Clashes	Symm-Clashes
1	A	2481	0	2507	40	0
1	B	2529	0	2564	30	0
1	C	2525	0	2557	23	0
1	D	2519	0	2523	28	0
2	A	15	0	4	6	0
2	B	15	0	5	1	0
2	C	15	0	5	1	0
2	D	15	0	5	4	0
3	A	21	0	5	1	0
3	B	7	0	2	0	0
3	C	7	0	2	0	0
4	B	6	0	8	0	0
4	C	6	0	8	0	0
4	D	6	0	8	0	0
5	A	197	0	0	2	0
5	B	215	0	0	5	0
5	C	172	0	0	3	0
5	D	121	0	0	2	0
All	All	10872	0	10203	117	0

The all-atom clashscore is defined as the number of clashes found per 1000 atoms (including hydrogen atoms). The all-atom clashscore for this structure is 6.

All (117) close contacts within the same asymmetric unit are listed below, sorted by their clash magnitude.

Atom-1	Atom-2	Interatomic distance (Å)	Clash overlap (Å)
1:C:276:ILE:HD13	1:C:282[B]:ILE:HD13	1.22	1.17
1:A:276:ILE:HD12	1:A:282:ILE:HD13	1.37	1.06
1:A:276:ILE:CD1	1:A:282:ILE:HD13	1.98	0.92
1:C:276:ILE:HD13	1:C:282[B]:ILE:CD1	2.09	0.79
1:C:293:ILE:HD12	1:C:301:ASP:HB2	1.64	0.79
1:D:192:HIS:NE2	2:D:1333:2B4:O14	2.13	0.78
1:C:276:ILE:CD1	1:C:282[B]:ILE:HD13	2.10	0.76
1:D:30:VAL:HG11	2:D:1333:2B4:BR1	2.44	0.73
1:D:280:TYR:OH	5:D:2100:HOH:O	1.97	0.73
1:A:6:GLN:O	1:C:304:LYS:HE3	1.89	0.72
1:A:30:VAL:HG11	2:A:1332:2B4:C4	2.20	0.71
1:A:276:ILE:HG21	1:A:288:LEU:CD1	2.21	0.70
1:A:105:ARG:NE	2:A:1332:2B4:O11	2.15	0.70
1:D:293:ILE:HD12	1:D:301:ASP:HB2	1.75	0.69
1:A:314:ARG:CG	1:A:314:ARG:HH11	2.06	0.69
1:B:100[B]:GLN:HA	1:B:100[B]:GLN:OE1	1.92	0.69

*Continued on next page...*

*Continued from previous page...*

Atom-1	Atom-2	Interatomic distance (Å)	Clash overlap (Å)
1:D:194:ASP:OD1	1:D:194:ASP:N	2.28	0.67
1:A:310:ASP:N	1:A:310:ASP:OD1	2.27	0.66
1:A:197:VAL:HG13	1:A:314:ARG:HD3	1.77	0.66
1:B:239:GLU:OE1	5:B:2163:HOH:O	2.14	0.65
1:C:103:GLU:OE1	5:C:2074:HOH:O	2.16	0.63
2:D:1333:2B4:H1	2:D:1333:2B4:C12	2.29	0.63
1:B:276:ILE:CD1	1:B:282:ILE:HG21	2.31	0.61
1:B:276:ILE:HD13	1:B:282:ILE:HD13	1.83	0.61
2:D:1333:2B4:C1	2:D:1333:2B4:C12	2.77	0.60
2:A:1332:2B4:O13	3:A:1333:MLI:O8	0.60	0.60
1:D:162:CYS:HA	1:D:165:ASP:OD2	2.02	0.59
1:D:274:THR:O	1:D:287:PHE:HA	2.02	0.59
1:A:3:LEU:HD21	1:B:210:LEU:HD23	1.85	0.59
1:A:317:LYS:O	1:A:320:ASP:N	2.37	0.58
1:C:30:VAL:HG11	2:C:1333:2B4:BR1	2.59	0.58
1:A:276:ILE:HG21	1:A:288:LEU:HD11	1.85	0.57
1:B:214:ASN:ND2	5:B:2152:HOH:O	2.37	0.57
1:A:276:ILE:HD13	1:A:288:LEU:HD11	1.87	0.56
1:B:276:ILE:HD13	1:B:282:ILE:CD1	2.35	0.56
1:C:323:TRP:O	1:C:327:LYS:HB2	2.04	0.56
1:D:282:ILE:HD12	1:D:319:ALA:HB1	1.87	0.56
1:C:293:ILE:HD12	1:C:301:ASP:CB	2.36	0.55
1:A:314:ARG:HG2	1:A:314:ARG:HH11	1.71	0.55
1:A:276:ILE:HG21	1:A:288:LEU:HD12	1.88	0.54
1:B:127:SER:HB3	1:B:130:CYS:HB3	1.90	0.54
1:A:30:VAL:HG11	2:A:1332:2B4:H4	1.89	0.54
1:D:113:VAL:HG21	1:D:329:LEU:HD13	1.91	0.53
1:C:227:LYS:HE2	5:C:2136:HOH:O	2.07	0.53
1:A:276:ILE:HD12	1:A:282:ILE:CD1	2.25	0.53
1:A:240:VAL:CG1	1:A:247:THR:HG22	2.39	0.53
1:A:145:VAL:HG12	1:A:149:ILE:HD12	1.91	0.53
1:A:293:ILE:HD13	1:D:179:VAL:HG22	1.91	0.53
1:C:276:ILE:HD13	1:C:282[A]:ILE:HD13	1.89	0.52
1:A:124:VAL:HG22	1:A:152:PHE:CZ	2.44	0.52
1:B:156:ARG:HD2	5:B:2109:HOH:O	2.10	0.52
1:D:282:ILE:CD1	1:D:319:ALA:HB1	2.41	0.51
1:C:276:ILE:HD13	1:C:282[A]:ILE:CD1	2.40	0.50
1:D:276:ILE:CD1	1:D:282:ILE:HG13	2.41	0.50
1:B:128:PRO:O	1:B:156:ARG:NH2	2.39	0.50
1:A:276:ILE:HD13	1:A:288:LEU:HD21	1.93	0.50
1:D:191:GLU:HG2	1:D:192:HIS:N	2.25	0.50

*Continued on next page...*

*Continued from previous page...*

Atom-1	Atom-2	Interatomic distance (Å)	Clash overlap (Å)
1:B:30:VAL:HG11	2:B:1333:2B4:BR1	2.67	0.50
1:D:32:MET:CE	1:D:60:GLU:HB3	2.42	0.50
1:D:41:LYS:NZ	5:D:2017:HOH:O	2.28	0.49
1:A:243:LEU:HD13	1:B:58:LYS:HG2	1.94	0.49
1:B:293:ILE:HD12	1:B:301:ASP:HB2	1.94	0.49
1:A:310:ASP:O	1:A:313:ALA:N	2.45	0.48
1:C:292:CYS:HB3	1:C:299:ILE:HG23	1.94	0.48
1:A:53:ILE:HD11	5:A:2042:HOH:O	2.14	0.48
1:A:237:ALA:O	1:A:241:ILE:HG13	2.13	0.47
1:D:317:LYS:O	1:D:320:ASP:N	2.47	0.47
1:B:277:LYS:HD3	1:B:285:ASP:OD1	2.14	0.47
1:A:135:VAL:O	2:A:1332:2B4:H2	2.14	0.47
1:A:301:ASP:OD2	1:C:10:ASN:HA	2.14	0.47
1:B:265:ASN:HB2	1:B:296:GLN:HB3	1.96	0.47
1:C:106:LEU:HA	1:C:138:PRO:HG3	1.96	0.46
1:B:304:LYS:HG3	1:D:9:VAL:HG23	1.98	0.46
1:B:82:TYR:CE2	1:B:123:VAL:HG12	2.50	0.46
1:A:230:HIS:O	1:A:234:VAL:HG23	2.14	0.46
1:D:120:ILE:O	1:D:124:VAL:HG23	2.16	0.46
1:D:196:SER:OG	1:D:230:HIS:NE2	2.41	0.46
1:C:232:GLN:NE2	5:C:2140:HOH:O	2.11	0.46
1:A:314:ARG:CG	1:A:314:ARG:NH1	2.71	0.46
1:C:222:ASP:O	1:C:225:GLN:NE2	2.49	0.46
1:A:113:VAL:HG22	1:A:145:VAL:HG21	1.97	0.46
1:B:292:CYS:HB3	1:B:299:ILE:HG23	1.98	0.45
1:B:280:TYR:OH	5:B:2193:HOH:O	2.19	0.45
1:D:113:VAL:HG22	1:D:145:VAL:HG21	1.97	0.45
1:B:53:ILE:HD12	5:B:2036:HOH:O	2.17	0.45
1:A:280:TYR:HB2	1:A:282:ILE:HD12	1.99	0.45
1:A:276:ILE:CD1	1:A:288:LEU:HD21	2.48	0.44
1:D:291:PRO:HB2	1:D:303:VAL:HB	2.00	0.44
1:B:189:LEU:HD22	1:B:290:VAL:HA	2.00	0.44
1:B:11:LEU:CD1	1:D:302:VAL:HG23	2.47	0.44
1:D:159:GLY:HA3	1:D:273:SER:HB2	2.00	0.44
1:A:44:ALA:O	1:A:73:THR:HG23	2.18	0.43
1:A:189:LEU:HD22	1:A:290:VAL:HA	1.99	0.43
1:C:109:VAL:O	1:C:113:VAL:HG23	2.18	0.43
1:D:282:ILE:HD11	1:D:319:ALA:CB	2.49	0.43
1:D:109:VAL:HG13	1:D:110:GLN:N	2.34	0.43
1:A:22:ILE:HD12	1:A:44:ALA:HB2	2.00	0.42
1:B:269:VAL:HA	1:B:292:CYS:O	2.18	0.42

*Continued on next page...*

Continued from previous page...

Atom-1	Atom-2	Interatomic distance (Å)	Clash overlap (Å)
1:C:280:TYR:CE1	1:C:307:LEU:HD12	2.54	0.42
1:C:272:ILE:O	1:C:289:SER:HA	2.20	0.42
1:A:314:ARG:HG3	1:A:314:ARG:HH11	1.84	0.42
1:B:276:ILE:HD11	1:B:282:ILE:HG21	2.02	0.42
1:C:91:VAL:HG21	1:C:123:VAL:HG13	2.02	0.42
1:B:109:VAL:HG13	1:B:110:GLN:N	2.35	0.41
1:B:141:ILE:O	1:B:144:TYR:HB3	2.20	0.41
1:A:269:VAL:HA	1:A:292:CYS:O	2.21	0.41
1:D:307:LEU:HD11	1:D:315:LEU:HD22	2.02	0.41
1:B:237:ALA:O	1:B:241:ILE:HG13	2.20	0.41
1:B:158:ILE:HD13	1:B:294:LEU:HD11	2.02	0.41
1:B:11:LEU:HD11	1:D:302:VAL:HG23	2.01	0.41
1:C:137:ASN:HA	1:C:139:VAL:N	2.35	0.41
2:A:1332:2B4:H1	5:A:2117:HOH:O	2.20	0.41
1:A:159:GLY:HA3	1:A:273:SER:HB2	2.03	0.41
1:A:307:LEU:HD11	1:A:315:LEU:HD22	2.03	0.40
1:B:276:ILE:CD1	1:B:282:ILE:HD13	2.50	0.40
1:D:269:VAL:HA	1:D:292:CYS:O	2.20	0.40
1:C:323:TRP:NE1	1:C:327:LYS:HG3	2.36	0.40

There are no symmetry-related clashes.

## 5.3 Torsion angles [i](#)

### 5.3.1 Protein backbone [i](#)

In the following table, the Percentiles column shows the percent Ramachandran outliers of the chain as a percentile score with respect to all X-ray entries followed by that with respect to entries of similar resolution.

The Analysed column shows the number of residues for which the backbone conformation was analysed, and the total number of residues.

Mol	Chain	Analysed	Favoured	Allowed	Outliers	Percentiles	
1	A	324/331 (98%)	314 (97%)	10 (3%)	0	100	100
1	B	331/331 (100%)	321 (97%)	10 (3%)	0	100	100
1	C	331/331 (100%)	318 (96%)	12 (4%)	1 (0%)	46	55
1	D	332/331 (100%)	321 (97%)	9 (3%)	2 (1%)	30	34
All	All	1318/1324 (100%)	1274 (97%)	41 (3%)	3 (0%)	52	63

All (3) Ramachandran outliers are listed below:

Mol	Chain	Res	Type
1	C	285	ASP
1	D	280	TYR
1	D	318	SER

### 5.3.2 Protein sidechains ⓘ

In the following table, the Percentiles column shows the percent sidechain outliers of the chain as a percentile score with respect to all X-ray entries followed by that with respect to entries of similar resolution.

The Analysed column shows the number of residues for which the sidechain conformation was analysed, and the total number of residues.

Mol	Chain	Analysed	Rotameric	Outliers	Percentiles	
1	A	270/286 (94%)	265 (98%)	5 (2%)	65	79
1	B	277/286 (97%)	274 (99%)	3 (1%)	80	90
1	C	276/286 (96%)	275 (100%)	1 (0%)	93	97
1	D	272/286 (95%)	261 (96%)	11 (4%)	38	49
All	All	1095/1144 (96%)	1075 (98%)	20 (2%)	66	81

All (20) residues with a non-rotameric sidechain are listed below:

Mol	Chain	Res	Type
1	A	30	VAL
1	A	115	ILE
1	A	275	MET
1	A	310	ASP
1	A	314	ARG
1	B	136	SER
1	B	175	GLU
1	B	242	LYS
1	C	273	SER
1	D	84	VAL
1	D	98	ARG
1	D	99	GLN
1	D	136	SER
1	D	148	LYS
1	D	175	GLU
1	D	194	ASP
1	D	239[A]	GLU

*Continued on next page...*

*Continued from previous page...*

Mol	Chain	Res	Type
1	D	239[B]	GLU
1	D	306	THR
1	D	318	SER

Some sidechains can be flipped to improve hydrogen bonding and reduce clashes. All (3) such sidechains are listed below:

Mol	Chain	Res	Type
1	A	99	GLN
1	C	100	GLN
1	D	99	GLN

### 5.3.3 RNA [i](#)

There are no RNA molecules in this entry.

## 5.4 Non-standard residues in protein, DNA, RNA chains [i](#)

There are no non-standard protein/DNA/RNA residues in this entry.

## 5.5 Carbohydrates [i](#)

There are no carbohydrates in this entry.

## 5.6 Ligand geometry [i](#)

12 ligands are modelled in this entry.

In the following table, the Counts columns list the number of bonds (or angles) for which Mogul statistics could be retrieved, the number of bonds (or angles) that are observed in the model and the number of bonds (or angles) that are defined in the chemical component dictionary. The Link column lists molecule types, if any, to which the group is linked. The Z score for a bond length (or angle) is the number of standard deviations the observed value is removed from the expected value. A bond length (or angle) with  $|Z| > 2$  is considered an outlier worth inspection. RMSZ is the root-mean-square of all Z scores of the bond lengths (or angles).

Mol	Type	Chain	Res	Link	Bond lengths			Bond angles		
					Counts	RMSZ	$\# Z  > 2$	Counts	RMSZ	$\# Z  > 2$
2	2B4	A	1332	-	8,15,15	0.30	0	10,20,20	0.28	0
3	MLI	A	1333	-	0,6,6	0.00	-	0,7,7	0.00	-
3	MLI	A	1334	-	0,6,6	0.00	-	0,7,7	0.00	-

Mol	Type	Chain	Res	Link	Bond lengths			Bond angles		
					Counts	RMSZ	# Z  > 2	Counts	RMSZ	# Z  > 2
3	MLI	A	1335	-	0,6,6	0.00	-	0,7,7	0.00	-
4	GOL	B	1332	-	5,5,5	0.41	0	5,5,5	0.76	0
2	2B4	B	1333	-	8,15,15	0.53	0	10,20,20	0.46	0
3	MLI	B	1334	-	0,6,6	0.00	-	0,7,7	0.00	-
4	GOL	C	1332	-	5,5,5	0.43	0	5,5,5	0.67	0
2	2B4	C	1333	-	8,15,15	0.48	0	10,20,20	0.20	0
3	MLI	C	1334	-	0,6,6	0.00	-	0,7,7	0.00	-
4	GOL	D	1332	-	5,5,5	0.31	0	5,5,5	0.61	0
2	2B4	D	1333	-	8,15,15	0.66	0	10,20,20	0.52	0

In the following table, the Chirals column lists the number of chiral outliers, the number of chiral centers analysed, the number of these observed in the model and the number defined in the chemical component dictionary. Similar counts are reported in the Torsion and Rings columns. '-' means no outliers of that kind were identified.

Mol	Type	Chain	Res	Link	Chirals	Torsions	Rings
2	2B4	A	1332	-	-	0/4/12/12	0/1/1/1
3	MLI	A	1333	-	-	0/0/4/4	0/0/0/0
3	MLI	A	1334	-	-	0/0/4/4	0/0/0/0
3	MLI	A	1335	-	-	0/0/4/4	0/0/0/0
4	GOL	B	1332	-	-	0/4/4/4	0/0/0/0
2	2B4	B	1333	-	-	0/4/12/12	0/1/1/1
3	MLI	B	1334	-	-	0/0/4/4	0/0/0/0
4	GOL	C	1332	-	-	0/4/4/4	0/0/0/0
2	2B4	C	1333	-	-	0/4/12/12	0/1/1/1
3	MLI	C	1334	-	-	0/0/4/4	0/0/0/0
4	GOL	D	1332	-	-	0/4/4/4	0/0/0/0
2	2B4	D	1333	-	-	0/4/12/12	0/1/1/1

There are no bond length outliers.

There are no bond angle outliers.

There are no chirality outliers.

There are no torsion outliers.

There are no ring outliers.

5 monomers are involved in 12 short contacts:

Mol	Chain	Res	Type	Clashes	Symm-Clashes
2	A	1332	2B4	6	0
3	A	1333	MLI	1	0
2	B	1333	2B4	1	0

*Continued on next page...*

*Continued from previous page...*

Mol	Chain	Res	Type	Clashes	Symm-Clashes
2	C	1333	2B4	1	0
2	D	1333	2B4	4	0

## 5.7 Other polymers [i](#)

There are no such residues in this entry.

## 5.8 Polymer linkage issues [i](#)

There are no chain breaks in this entry.

## 6 Fit of model and data ⓘ

### 6.1 Protein, DNA and RNA chains ⓘ

In the following table, the column labelled ‘#RSRZ> 2’ contains the number (and percentage) of RSRZ outliers, followed by percent RSRZ outliers for the chain as percentile scores relative to all X-ray entries and entries of similar resolution. The OWAB column contains the minimum, median, 95<sup>th</sup> percentile and maximum values of the occupancy-weighted average B-factor per residue. The column labelled ‘Q< 0.9’ lists the number of (and percentage) of residues with an average occupancy less than 0.9.

Mol	Chain	Analysed	<RSRZ>	#RSRZ>2		OWAB(Å <sup>2</sup> )	Q<0.9
1	A	327/331 (98%)	0.28	23 (7%)	19 29	18, 28, 62, 90	0
1	B	330/331 (99%)	0.12	16 (4%)	34 49	17, 25, 46, 62	0
1	C	330/331 (99%)	0.28	25 (7%)	17 26	18, 28, 53, 74	0
1	D	330/331 (99%)	0.40	26 (7%)	15 24	18, 32, 60, 69	0
All	All	1317/1324 (99%)	0.27	90 (6%)	20 31	17, 28, 57, 90	0

All (90) RSRZ outliers are listed below:

Mol	Chain	Res	Type	RSRZ
1	A	329	LEU	6.1
1	A	331	PHE	4.6
1	B	2	ALA	4.5
1	C	331	PHE	4.5
1	D	135	VAL	4.3
1	B	13	LYS	4.1
1	D	313	ALA	4.1
1	C	281	GLY	3.7
1	C	323	TRP	3.6
1	D	272	ILE	3.6
1	D	238	TYR	3.5
1	D	220	ASP	3.5
1	C	14	GLU	3.5
1	A	53	ILE	3.4
1	D	245	GLY	3.4
1	D	310	ASP	3.4
1	B	281	GLY	3.4
1	A	320	ASP	3.3
1	C	228[A]	ASP	3.3
1	A	328	GLU	3.3
1	D	281	GLY	3.3

*Continued on next page...*

*Continued from previous page...*

Mol	Chain	Res	Type	RSRZ
1	C	329	LEU	3.2
1	D	92	ILE	3.2
1	B	15	GLU	3.2
1	A	323	TRP	3.1
1	B	5	ASP	3.1
1	C	238	TYR	3.1
1	A	283	LYS	3.1
1	C	221	ALA	3.1
1	A	281	GLY	3.0
1	A	278	GLY	3.0
1	C	135	VAL	3.0
1	A	279	LEU	3.0
1	B	330	GLN	2.9
1	A	313	ALA	2.9
1	D	228	ASP	2.9
1	D	134	ILE	2.9
1	B	102	GLY	2.9
1	A	330	GLN	2.9
1	B	53	ILE	2.8
1	D	133	LEU	2.8
1	C	16	GLN	2.8
1	D	331	PHE	2.7
1	B	220	ASP	2.7
1	C	139	VAL	2.7
1	C	278	GLY	2.7
1	D	139	VAL	2.7
1	A	284	GLU	2.7
1	A	327	LYS	2.7
1	D	221	ALA	2.6
1	C	330	GLN	2.6
1	D	14	GLU	2.6
1	D	320	ASP	2.5
1	B	309	PRO	2.5
1	C	324	GLY	2.5
1	A	139	VAL	2.4
1	D	16	GLN	2.4
1	D	225	GLN	2.4
1	A	325	ILE	2.4
1	C	220	ASP	2.4
1	A	282	ILE	2.4
1	D	100	GLN	2.4
1	C	15	GLU	2.3

*Continued on next page...*

*Continued from previous page...*

Mol	Chain	Res	Type	RSRZ
1	A	17	VAL	2.3
1	B	251	ILE	2.3
1	A	221	ALA	2.3
1	A	324	GLY	2.3
1	C	272	ILE	2.3
1	D	273	SER	2.2
1	C	54	GLU	2.2
1	B	219	THR	2.2
1	B	279	LEU	2.2
1	C	53	ILE	2.2
1	D	93	ILE	2.2
1	A	135	VAL	2.2
1	C	160	SER	2.2
1	B	221	ALA	2.2
1	A	272	ILE	2.1
1	C	114	ASN	2.1
1	C	92	ILE	2.1
1	C	136	SER	2.1
1	A	3	LEU	2.1
1	C	93	ILE	2.1
1	C	282[A]	ILE	2.1
1	D	280	TYR	2.0
1	D	318	SER	2.0
1	B	17	VAL	2.0
1	D	219	THR	2.0
1	D	161	GLY	2.0
1	B	11	LEU	2.0

## 6.2 Non-standard residues in protein, DNA, RNA chains [i](#)

There are no non-standard protein/DNA/RNA residues in this entry.

## 6.3 Carbohydrates [i](#)

There are no carbohydrates in this entry.

## 6.4 Ligands [i](#)

In the following table, the Atoms column lists the number of modelled atoms in the group and the number defined in the chemical component dictionary. LLDF column lists the quality of electron density of the group with respect to its neighbouring residues in protein, DNA or RNA chains.

The B-factors column lists the minimum, median, 95<sup>th</sup> percentile and maximum values of B factors of atoms in the group. The column labelled 'Q< 0.9' lists the number of atoms with occupancy less than 0.9.

Mol	Type	Chain	Res	Atoms	RSCC	RSR	LLDF	B-factors(Å <sup>2</sup> )	Q<0.9
4	GOL	C	1332	6/6	0.77	0.22	3.73	54,60,62,68	0
4	GOL	D	1332	6/6	0.89	0.14	2.00	44,50,52,52	0
2	2B4	A	1332	15/15	0.93	0.22	1.27	29,38,41,47	15
3	MLI	B	1334	7/7	0.96	0.13	0.48	22,25,27,27	0
3	MLI	A	1333	7/7	0.95	0.18	0.28	21,21,22,23	7
3	MLI	A	1334	7/7	0.96	0.12	0.15	27,30,32,32	0
3	MLI	C	1334	7/7	0.96	0.11	-0.09	25,27,30,32	0
2	2B4	D	1333	15/15	0.95	0.14	-0.73	33,39,43,49	0
3	MLI	A	1335	7/7	0.94	0.10	-1.06	26,27,30,33	0
2	2B4	C	1333	15/15	0.97	0.11	-1.15	24,28,33,40	0
2	2B4	B	1333	15/15	0.98	0.08	-1.82	19,24,26,28	0
4	GOL	B	1332	6/6	0.76	0.23	-	34,44,49,53	0

## 6.5 Other polymers [i](#)

There are no such residues in this entry.