



wwPDB X-ray Structure Validation Summary Report ⓘ

Feb 1, 2016 – 02:49 PM GMT

PDB ID : 4ANW
Title : Complexes of PI3Kgamma with isoform selective inhibitors.
Authors : Foster, P.G.; Loughheed, J.C.
Deposited on : 2012-03-22
Resolution : 2.31 Å(reported)

This is a wwPDB X-ray Structure Validation Summary Report for a publicly released PDB entry.
We welcome your comments at validation@mail.wwpdb.org
A user guide is available at
<http://wwpdb.org/validation/2016/XrayValidationReportHelp>
with specific help available everywhere you see the ⓘ symbol.

The following versions of software and data (see [references ⓘ](#)) were used in the production of this report:

MolProbity : 4.02b-467
Mogul : 1.7 (RC4), CSD as536be (2015)
Xtriage (Phenix) : 1.9-1692
EDS : rb-20026688
Percentile statistics : 20151230.v01 (using entries in the PDB archive December 30th 2015)
Refmac : 5.8.0135
CCP4 : 6.5.0
Ideal geometry (proteins) : Engh & Huber (2001)
Ideal geometry (DNA, RNA) : Parkinson et al. (1996)
Validation Pipeline (wwPDB-VP) : trunk26865

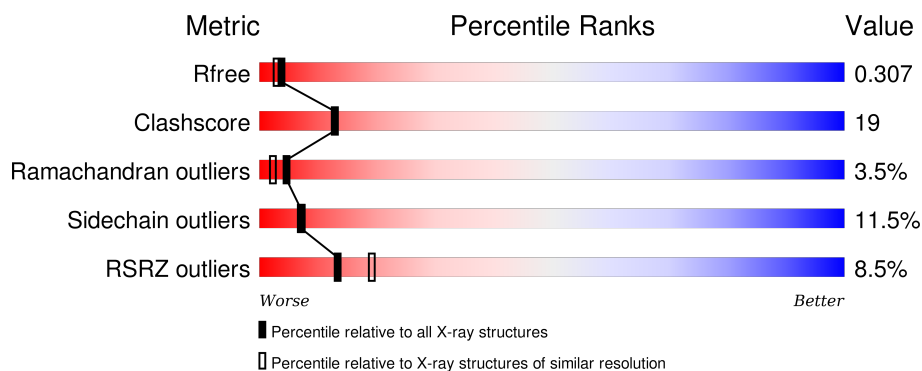
1 Overall quality at a glance

The following experimental techniques were used to determine the structure:

X-RAY DIFFRACTION

The reported resolution of this entry is 2.31 Å.

Percentile scores (ranging between 0-100) for global validation metrics of the entry are shown in the following graphic. The table shows the number of entries on which the scores are based.



Metric	Whole archive (#Entries)	Similar resolution (#Entries, resolution range(Å))
R_{free}	91344	4425 (2.34-2.30)
Clashscore	102246	5057 (2.34-2.30)
Ramachandran outliers	100387	5008 (2.34-2.30)
Sidechain outliers	100360	5007 (2.34-2.30)
RSRZ outliers	91569	4432 (2.34-2.30)

The table below summarises the geometric issues observed across the polymeric chains and their fit to the electron density. The red, orange, yellow and green segments on the lower bar indicate the fraction of residues that contain outliers for ≥ 3 , 2, 1 and 0 types of geometric quality criteria. A grey segment represents the fraction of residues that are not modelled. The numeric value for each fraction is indicated below the corresponding segment, with a dot representing fractions $\leq 5\%$. The upper red bar (where present) indicates the fraction of residues that have poor fit to the electron density. The numeric value is given above the bar.

Mol	Chain	Length	Quality of chain
1	A	980	

2 Entry composition

There are 4 unique types of molecules in this entry. The entry contains 6888 atoms, of which 0 are hydrogens and 0 are deuteriums.

In the tables below, the ZeroOcc column contains the number of atoms modelled with zero occupancy, the AltConf column contains the number of residues with at least one atom in alternate conformation and the Trace column contains the number of residues modelled with at most 2 atoms.

- Molecule 1 is a protein called PHOSPHATIDYLINOSITOL-4,5-BISPHOSPHATE 3-KINASE CATALYTIC SUBUNIT GAMMA ISOFORM.

Mol	Chain	Residues	Atoms					ZeroOcc	AltConf	Trace
1	A	833	Total	C	N	O	S	0	0	0
			6757	4334	1153	1235	35			

There are 21 discrepancies between the modelled and reference sequences:

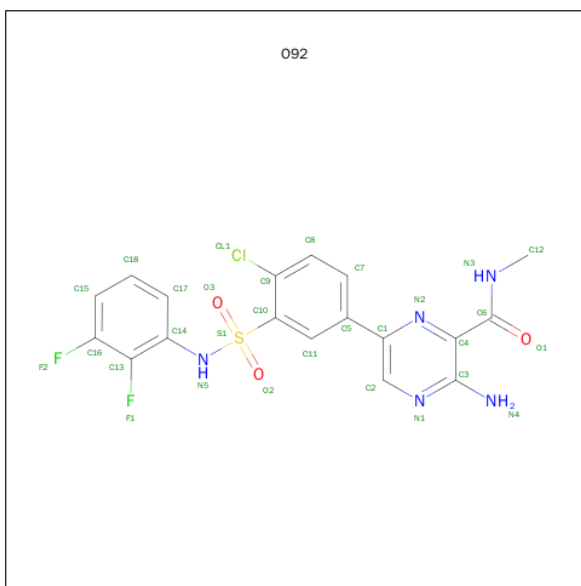
Chain	Residue	Modelled	Actual	Comment	Reference
A	139	MET	-	EXPRESSION TAG	UNP P48736
A	140	LEU	-	EXPRESSION TAG	UNP P48736
A	141	LEU	-	EXPRESSION TAG	UNP P48736
A	142	GLY	-	EXPRESSION TAG	UNP P48736
A	143	SER	-	EXPRESSION TAG	UNP P48736
A	1103	GLU	-	EXPRESSION TAG	UNP P48736
A	1104	PHE	-	EXPRESSION TAG	UNP P48736
A	1105	GLY	-	EXPRESSION TAG	UNP P48736
A	1106	LEU	-	EXPRESSION TAG	UNP P48736
A	1107	VAL	-	EXPRESSION TAG	UNP P48736
A	1108	PRO	-	EXPRESSION TAG	UNP P48736
A	1109	ARG	-	EXPRESSION TAG	UNP P48736
A	1110	GLY	-	EXPRESSION TAG	UNP P48736
A	1111	SER	-	EXPRESSION TAG	UNP P48736
A	1112	GLY	-	EXPRESSION TAG	UNP P48736
A	1113	HIS	-	EXPRESSION TAG	UNP P48736
A	1114	HIS	-	EXPRESSION TAG	UNP P48736
A	1115	HIS	-	EXPRESSION TAG	UNP P48736
A	1116	HIS	-	EXPRESSION TAG	UNP P48736
A	1117	HIS	-	EXPRESSION TAG	UNP P48736
A	1118	HIS	-	EXPRESSION TAG	UNP P48736

- Molecule 2 is SULFATE ION (three-letter code: SO4) (formula: O₄S).



Mol	Chain	Residues	Atoms			ZeroOcc	AltConf
2	A	1	Total	O	S	0	0
			5	4	1		

- Molecule 3 is 3-AMINO-6-{4-CHLORO-3-[(2,3-DIFLUOROPHENYL)SULFAMOYL]PHENYL}-N-METHYLPYRAZINE-2-CARBOXAMIDE (three-letter code: O92) (formula: C₁₈H₁₄ClF₂N₅O₃S).



Mol	Chain	Residues	Atoms						ZeroOcc	AltConf
3	A	1	Total	C	Cl	F	N	O	S	
			60	36	2	4	10	6	2	0
										1

- Molecule 4 is water.

Mol	Chain	Residues	Atoms		ZeroOcc	AltConf
4	A	66	Total	O	0	0
			66	66		



4 Data and refinement statistics

Property	Value	Source
Space group	C 1 2 1	Depositor
Cell constants a, b, c, α , β , γ	143.42Å 68.53Å 106.26Å 90.00° 95.26° 90.00°	Depositor
Resolution (Å)	71.43 – 2.31 71.41 – 2.31	Depositor EDS
% Data completeness (in resolution range)	99.2 (71.43-2.31) 98.3 (71.41-2.31)	Depositor EDS
R_{merge}	0.06	Depositor
R_{sym}	(Not available)	Depositor
$\langle I/\sigma(I) \rangle$ ¹	1.43 (at 2.32Å)	Xtriage
Refinement program	REFMAC 5.2.0019	Depositor
R, R_{free}	0.235 , 0.296 0.246 , 0.307	Depositor DCC
R_{free} test set	2248 reflections (5.31%)	DCC
Wilson B-factor (Å ²)	61.1	Xtriage
Anisotropy	0.139	Xtriage
Bulk solvent k_{sol} (e/Å ³), B_{sol} (Å ²)	0.35 , 58.8	EDS
Estimated twinning fraction	No twinning to report.	Xtriage
L-test for twinning ²	$\langle L \rangle = 0.48$, $\langle L^2 \rangle = 0.31$	Xtriage
Outliers	0 of 44608 reflections	Xtriage
F_o, F_c correlation	0.94	EDS
Total number of atoms	6888	wwPDB-VP
Average B, all atoms (Å ²)	68.0	wwPDB-VP

Xtriage's analysis on translational NCS is as follows: *The largest off-origin peak in the Patterson function is 3.92% of the height of the origin peak. No significant pseudotranslation is detected.*

¹Intensities estimated from amplitudes.

²Theoretical values of $\langle |L| \rangle$, $\langle L^2 \rangle$ for acentric reflections are 0.5, 0.375 respectively for untwinned datasets, and 0.333, 0.2 for perfectly twinned datasets.

5 Model quality [i](#)

5.1 Standard geometry [i](#)

Bond lengths and bond angles in the following residue types are not validated in this section: O92, SO4

The Z score for a bond length (or angle) is the number of standard deviations the observed value is removed from the expected value. A bond length (or angle) with $|Z| > 5$ is considered an outlier worth inspection. RMSZ is the root-mean-square of all Z scores of the bond lengths (or angles).

Mol	Chain	Bond lengths		Bond angles	
		RMSZ	$\# Z > 5$	RMSZ	$\# Z > 5$
1	A	0.89	2/6901 (0.0%)	0.92	11/9334 (0.1%)

Chiral center outliers are detected by calculating the chiral volume of a chiral center and verifying if the center is modelled as a planar moiety or with the opposite hand. A planarity outlier is detected by checking planarity of atoms in a peptide group, atoms in a mainchain group or atoms of a sidechain that are expected to be planar.

Mol	Chain	#Chirality outliers	#Planarity outliers
1	A	0	3

All (2) bond length outliers are listed below:

Mol	Chain	Res	Type	Atoms	Z	Observed(Å)	Ideal(Å)
1	A	570	GLU	CB-CG	5.87	1.63	1.52
1	A	480	TYR	CG-CD2	-5.18	1.32	1.39

The worst 5 of 11 bond angle outliers are listed below:

Mol	Chain	Res	Type	Atoms	Z	Observed($^{\circ}$)	Ideal($^{\circ}$)
1	A	684	ARG	NE-CZ-NH1	12.36	126.48	120.30
1	A	684	ARG	NE-CZ-NH2	-7.88	116.36	120.30
1	A	575	LEU	CA-CB-CG	6.77	130.88	115.30
1	A	170	ASP	CB-CG-OD1	6.17	123.86	118.30
1	A	966	GLY	N-CA-C	5.98	128.04	113.10

There are no chirality outliers.

All (3) planarity outliers are listed below:

Mol	Chain	Res	Type	Group
1	A	1039	MET	Peptide

Continued on next page...

Continued from previous page...

Mol	Chain	Res	Type	Group
1	A	410	TRP	Peptide
1	A	965	PHE	Peptide

5.2 Too-close contacts

In the following table, the Non-H and H(model) columns list the number of non-hydrogen atoms and hydrogen atoms in the chain respectively. The H(added) column lists the number of hydrogen atoms added and optimized by MolProbity. The Clashes column lists the number of clashes within the asymmetric unit, whereas Symm-Clashes lists symmetry related clashes.

Mol	Chain	Non-H	H(model)	H(added)	Clashes	Symm-Clashes
1	A	6757	0	6789	262	0
2	A	5	0	0	0	0
3	A	60	0	28	4	0
4	A	66	0	0	1	0
All	All	6888	0	6817	262	0

The all-atom clashscore is defined as the number of clashes found per 1000 atoms (including hydrogen atoms). The all-atom clashscore for this structure is 19.

The worst 5 of 262 close contacts within the same asymmetric unit are listed below, sorted by their clash magnitude.

Atom-1	Atom-2	Interatomic distance (Å)	Clash overlap (Å)
1:A:777:SER:CB	1:A:778:GLN:HB2	1.59	1.31
1:A:967:HIS:H	1:A:968:ILE:HA	0.99	1.15
1:A:777:SER:HB3	1:A:778:GLN:CB	1.76	1.14
1:A:966:GLY:HA3	1:A:967:HIS:HB2	1.31	1.08
1:A:967:HIS:N	1:A:968:ILE:HA	1.61	1.02

There are no symmetry-related clashes.

5.3 Torsion angles

5.3.1 Protein backbone

In the following table, the Percentiles column shows the percent Ramachandran outliers of the chain as a percentile score with respect to all X-ray entries followed by that with respect to entries of similar resolution.

The Analysed column shows the number of residues for which the backbone conformation was

analysed, and the total number of residues.

Mol	Chain	Analysed	Favoured	Allowed	Outliers	Percentiles
1	A	819/980 (84%)	720 (88%)	70 (8%)	29 (4%)	4 2

5 of 29 Ramachandran outliers are listed below:

Mol	Chain	Res	Type
1	A	146	GLU
1	A	147	SER
1	A	211	LEU
1	A	374	PRO
1	A	778	GLN

5.3.2 Protein sidechains ⓘ

In the following table, the Percentiles column shows the percent sidechain outliers of the chain as a percentile score with respect to all X-ray entries followed by that with respect to entries of similar resolution.

The Analysed column shows the number of residues for which the sidechain conformation was analysed, and the total number of residues.

Mol	Chain	Analysed	Rotameric	Outliers	Percentiles
1	A	749/874 (86%)	663 (88%)	86 (12%)	7 7

5 of 86 residues with a non-rotameric sidechain are listed below:

Mol	Chain	Res	Type
1	A	652	GLU
1	A	764	ILE
1	A	1048	ILE
1	A	726	THR
1	A	743	GLN

Some sidechains can be flipped to improve hydrogen bonding and reduce clashes. 5 of 28 such sidechains are listed below:

Mol	Chain	Res	Type
1	A	585	HIS
1	A	673	HIS
1	A	1023	HIS
1	A	629	GLN
1	A	646	GLN

5.3.3 RNA ⓘ

There are no RNA molecules in this entry.

5.4 Non-standard residues in protein, DNA, RNA chains ⓘ

There are no non-standard protein/DNA/RNA residues in this entry.

5.5 Carbohydrates ⓘ

There are no carbohydrates in this entry.

5.6 Ligand geometry ⓘ

3 ligands are modelled in this entry.

In the following table, the Counts columns list the number of bonds (or angles) for which Mogul statistics could be retrieved, the number of bonds (or angles) that are observed in the model and the number of bonds (or angles) that are defined in the chemical component dictionary. The Link column lists molecule types, if any, to which the group is linked. The Z score for a bond length (or angle) is the number of standard deviations the observed value is removed from the expected value. A bond length (or angle) with $|Z| > 2$ is considered an outlier worth inspection. RMSZ is the root-mean-square of all Z scores of the bond lengths (or angles).

Mol	Type	Chain	Res	Link	Bond lengths			Bond angles		
					Counts	RMSZ	# $ Z > 2$	Counts	RMSZ	# $ Z > 2$
2	SO4	A	1188	-	4,4,4	0.35	0	6,6,6	0.66	0
3	O92	A	1189[A]	-	31,32,32	2.54	9 (29%)	43,47,47	2.03	8 (18%)
3	O92	A	1189[B]	-	31,32,32	2.54	8 (25%)	43,47,47	2.00	6 (13%)

In the following table, the Chirals column lists the number of chiral outliers, the number of chiral centers analysed, the number of these observed in the model and the number defined in the chemical component dictionary. Similar counts are reported in the Torsion and Rings columns. '-' means no outliers of that kind were identified.

Mol	Type	Chain	Res	Link	Chirals	Torsions	Rings
2	SO4	A	1188	-	-	0/0/0/0	0/0/0/0
3	O92	A	1189[A]	-	-	1/21/21/21	0/3/3/3
3	O92	A	1189[B]	-	-	1/21/21/21	0/3/3/3

The worst 5 of 17 bond length outliers are listed below:

Mol	Chain	Res	Type	Atoms	Z	Observed(Å)	Ideal(Å)
3	A	1189[A]	O92	C5-C1	-5.63	1.40	1.48
3	A	1189[B]	O92	C5-C1	-5.50	1.40	1.48
3	A	1189[A]	O92	C14-N5	-4.23	1.35	1.42
3	A	1189[B]	O92	C14-N5	-3.90	1.35	1.42
3	A	1189[A]	O92	C6-N3	2.07	1.35	1.33

The worst 5 of 14 bond angle outliers are listed below:

Mol	Chain	Res	Type	Atoms	Z	Observed(°)	Ideal(°)
3	A	1189[B]	O92	O3-S1-O2	-9.68	106.70	119.54
3	A	1189[A]	O92	O3-S1-O2	-8.48	108.29	119.54
3	A	1189[A]	O92	C15-C18-C17	-2.95	116.03	120.24
3	A	1189[A]	O92	C17-C14-N5	-2.27	116.05	120.94
3	A	1189[B]	O92	C10-S1-N5	-2.18	104.86	107.25

There are no chirality outliers.

All (2) torsion outliers are listed below:

Mol	Chain	Res	Type	Atoms
3	A	1189[A]	O92	C9-C10-S1-N5
3	A	1189[B]	O92	C9-C10-S1-N5

There are no ring outliers.

2 monomers are involved in 4 short contacts:

Mol	Chain	Res	Type	Clashes	Symm-Clashes
3	A	1189[A]	O92	3	0
3	A	1189[B]	O92	1	0

5.7 Other polymers [i](#)

There are no such residues in this entry.

5.8 Polymer linkage issues [i](#)

There are no chain breaks in this entry.

6 Fit of model and data [i](#)

6.1 Protein, DNA and RNA chains [i](#)

In the following table, the column labelled ‘#RSRZ> 2’ contains the number (and percentage) of RSRZ outliers, followed by percent RSRZ outliers for the chain as percentile scores relative to all X-ray entries and entries of similar resolution. The OWAB column contains the minimum, median, 95th percentile and maximum values of the occupancy-weighted average B-factor per residue. The column labelled ‘Q< 0.9’ lists the number of (and percentage) of residues with an average occupancy less than 0.9.

Mol	Chain	Analysed	<RSRZ>	#RSRZ>2	OWAB(Å ²)	Q<0.9
1	A	833/980 (85%)	0.70	71 (8%) 13 19	36, 65, 102, 115	0

The worst 5 of 71 RSRZ outliers are listed below:

Mol	Chain	Res	Type	RSRZ
1	A	1044	SER	9.2
1	A	757	TYR	8.1
1	A	998	SER	5.5
1	A	1086	TRP	5.4
1	A	895	THR	5.1

6.2 Non-standard residues in protein, DNA, RNA chains [i](#)

There are no non-standard protein/DNA/RNA residues in this entry.

6.3 Carbohydrates [i](#)

There are no carbohydrates in this entry.

6.4 Ligands [i](#)

In the following table, the Atoms column lists the number of modelled atoms in the group and the number defined in the chemical component dictionary. LLDF column lists the quality of electron density of the group with respect to its neighbouring residues in protein, DNA or RNA chains. The B-factors column lists the minimum, median, 95th percentile and maximum values of B factors of atoms in the group. The column labelled ‘Q< 0.9’ lists the number of atoms with occupancy less than 0.9.

Mol	Type	Chain	Res	Atoms	RSCC	RSR	LLDF	B-factors(Å ²)	Q<0.9
3	O92	A	1189[A]	30/30	0.94	0.15	-0.51	54,59,74,75	30

Continued on next page...

Continued from previous page...

Mol	Type	Chain	Res	Atoms	RSCC	RSR	LLDF	B-factors(\AA^2)	Q<0.9
3	O92	A	1189[B]	30/30	0.94	0.15	-0.52	50,57,71,71	30
2	SO4	A	1188	5/5	0.94	0.12	-1.12	75,76,79,81	0

6.5 Other polymers [i](#)

There are no such residues in this entry.