



Full wwPDB X-ray Structure Validation Report ⓘ

Feb 1, 2016 – 07:27 AM GMT

PDB ID : 3AOU
Title : Structure of the Na⁺ unbound rotor ring modified with N,N f-Dicyclohexylcarbodiimide of the Na⁺-transporting V-ATPase
Authors : Mizutani, K.; Yamamoto, M.; Yamato, I.; Kakinuma, Y.; Shirouzu, M.; Yokoyama, S.; Iwata, S.; Murata, T.
Deposited on : 2010-10-06
Resolution : 3.14 Å(reported)

This is a Full wwPDB X-ray Structure Validation Report for a publicly released PDB entry.
We welcome your comments at validation@mail.wwpdb.org
A user guide is available at
<http://wwpdb.org/validation/2016/XrayValidationReportHelp>
with specific help available everywhere you see the ⓘ symbol.

The following versions of software and data (see [references ⓘ](#)) were used in the production of this report:

MolProbity : 4.02b-467
Mogul : 1.7 (RC4), CSD as536be (2015)
Xtriage (Phenix) : 1.9-1692
EDS : rb-20026688
Percentile statistics : 20151230.v01 (using entries in the PDB archive December 30th 2015)
Refmac : 5.8.0135
CCP4 : 6.5.0
Ideal geometry (proteins) : Engh & Huber (2001)
Ideal geometry (DNA, RNA) : Parkinson et al. (1996)
Validation Pipeline (wwPDB-VP) : trunk26865

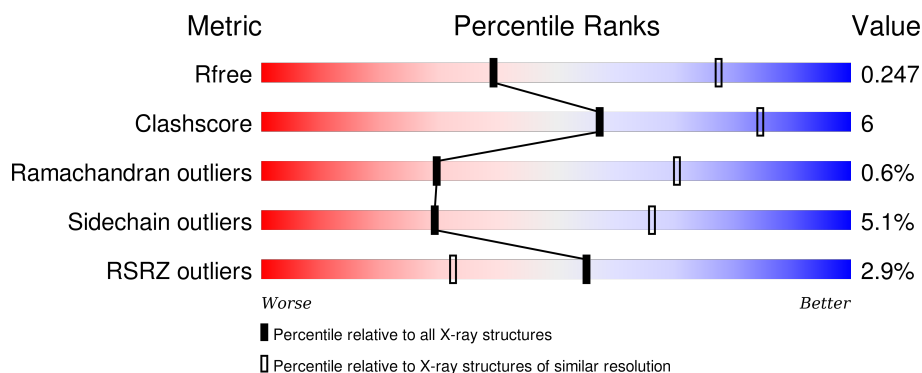
1 Overall quality at a glance

The following experimental techniques were used to determine the structure:

X-RAY DIFFRACTION

The reported resolution of this entry is 3.14 Å.

Percentile scores (ranging between 0-100) for global validation metrics of the entry are shown in the following graphic. The table shows the number of entries on which the scores are based.



Metric	Whole archive (#Entries)	Similar resolution (#Entries, resolution range(Å))
R_{free}	91344	1095 (3.18-3.10)
Clashscore	102246	1202 (3.18-3.10)
Ramachandran outliers	100387	1162 (3.18-3.10)
Sidechain outliers	100360	1162 (3.18-3.10)
RSRZ outliers	91569	1097 (3.18-3.10)

The table below summarises the geometric issues observed across the polymeric chains and their fit to the electron density. The red, orange, yellow and green segments on the lower bar indicate the fraction of residues that contain outliers for ≥ 3 , 2, 1 and 0 types of geometric quality criteria. A grey segment represents the fraction of residues that are not modelled. The numeric value for each fraction is indicated below the corresponding segment, with a dot representing fractions $\leq 5\%$. The upper red bar (where present) indicates the fraction of residues that have poor fit to the electron density. The numeric value is given above the bar.

Mol	Chain	Length	Quality of chain
1	A	156	<div> <div>6%</div> <div> <div></div> <div>81%</div> <div>17%</div> <div>..</div> </div> </div>
1	B	156	<div> <div>%</div> <div> <div></div> <div>83%</div> <div>13%</div> <div>.</div> </div> </div>
1	C	156	<div> <div>%</div> <div> <div></div> <div>78%</div> <div>19%</div> <div>.</div> </div> </div>
1	D	156	<div> <div>4%</div> <div> <div></div> <div>84%</div> <div>15%</div> <div>.</div> </div> </div>
1	E	156	<div> <div>7%</div> <div> <div></div> <div>83%</div> <div>15%</div> <div>..</div> </div> </div>

Continued on next page...

Continued from previous page...

Mol	Chain	Length	Quality of chain
1	F	156	
1	G	156	
1	H	156	
1	I	156	
1	J	156	

The following table lists non-polymeric compounds, carbohydrate monomers and non-standard residues in protein, DNA, RNA chains that are outliers for geometric or electron-density-fit criteria:

Mol	Type	Chain	Res	Chirality	Geometry	Clashes	Electron density
2	DCW	A	201	-	-	-	X
2	DCW	B	201	-	-	-	X
2	DCW	C	201	-	-	-	X
2	DCW	D	201	-	-	-	X
2	DCW	F	201	-	-	-	X
2	DCW	G	201	-	-	-	X
2	DCW	H	201	-	-	-	X
2	DCW	J	201	-	-	-	X
3	UMQ	C	202	-	-	-	X
3	UMQ	F	202	-	-	-	X

2 Entry composition

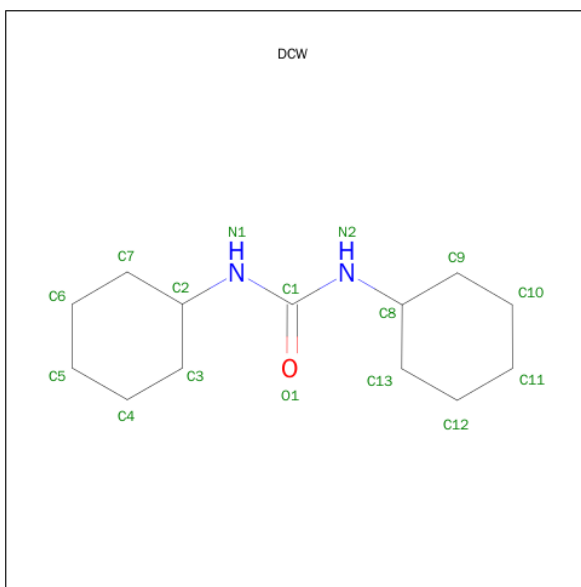
There are 4 unique types of molecules in this entry. The entry contains 11504 atoms, of which 0 are hydrogens and 0 are deuteriums.

In the tables below, the ZeroOcc column contains the number of atoms modelled with zero occupancy, the AltConf column contains the number of residues with at least one atom in alternate conformation and the Trace column contains the number of residues modelled with at most 2 atoms.

- Molecule 1 is a protein called V-type sodium ATPase subunit K.

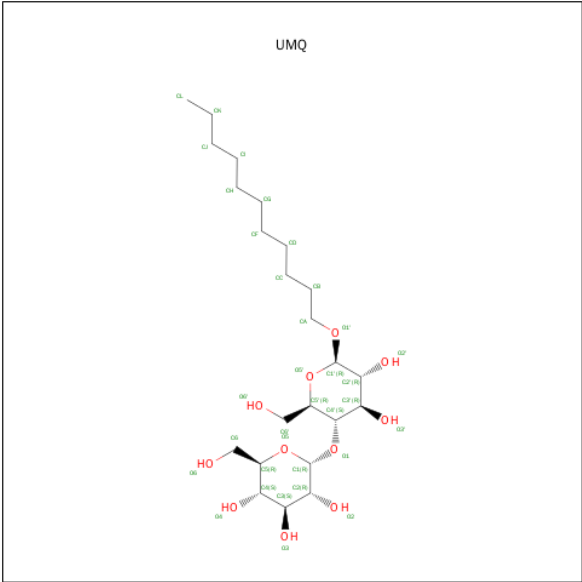
Mol	Chain	Residues	Atoms					ZeroOcc	AltConf	Trace
1	A	156	Total	C	N	O	S	0	0	0
			1127	743	176	201	7			
1	B	156	Total	C	N	O	S	0	0	0
			1127	743	176	201	7			
1	C	156	Total	C	N	O	S	0	0	0
			1127	743	176	201	7			
1	D	156	Total	C	N	O	S	0	0	0
			1127	743	176	201	7			
1	E	156	Total	C	N	O	S	0	0	0
			1127	743	176	201	7			
1	F	156	Total	C	N	O	S	0	0	0
			1127	743	176	201	7			
1	G	156	Total	C	N	O	S	0	0	0
			1127	743	176	201	7			
1	H	156	Total	C	N	O	S	0	0	0
			1127	743	176	201	7			
1	I	156	Total	C	N	O	S	0	0	0
			1127	743	176	201	7			
1	J	156	Total	C	N	O	S	0	0	0
			1127	743	176	201	7			

- Molecule 2 is DICYCLOHEXYLUREA (three-letter code: DCW) (formula: C₁₃H₂₄N₂O).



Mol	Chain	Residues	Atoms				ZeroOcc	AltConf
2	A	1	Total	C	N	O	0	0
			16	13	2	1		
2	B	1	Total	C	N	O	0	0
			16	13	2	1		
2	C	1	Total	C	N	O	0	0
			16	13	2	1		
2	D	1	Total	C	N	O	0	0
			16	13	2	1		
2	E	1	Total	C	N	O	0	0
			16	13	2	1		
2	F	1	Total	C	N	O	0	0
			16	13	2	1		
2	G	1	Total	C	N	O	0	0
			16	13	2	1		
2	H	1	Total	C	N	O	0	0
			16	13	2	1		
2	I	1	Total	C	N	O	0	0
			16	13	2	1		
2	J	1	Total	C	N	O	0	0
			16	13	2	1		

- Molecule 3 is UNDECYL-MALTOSIDE (three-letter code: UMQ) (formula: $C_{23}H_{44}O_{11}$).



Mol	Chain	Residues	Atoms			ZeroOcc	AltConf
3	C	1	Total	C	O	0	0
			34	23	11		
3	F	1	Total	C	O	0	0
			34	23	11		

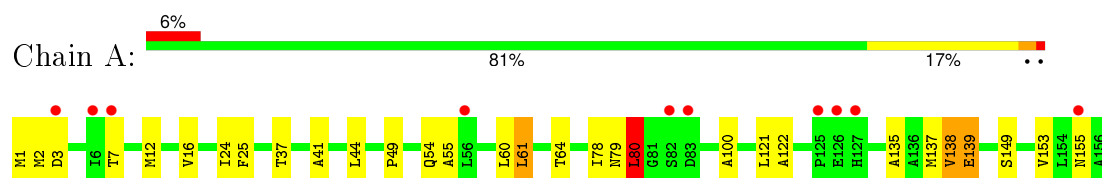
- Molecule 4 is water.

Mol	Chain	Residues	Atoms		ZeroOcc	AltConf
4	G	1	Total	O	0	0
			1	1		
4	H	1	Total	O	0	0
			1	1		
4	I	2	Total	O	0	0
			2	2		
4	J	2	Total	O	0	0
			2	2		

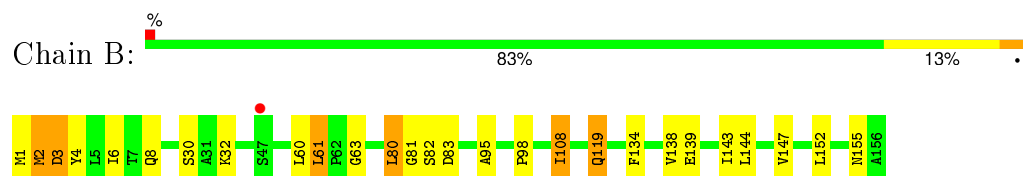
3 Residue-property plots [i](#)

These plots are drawn for all protein, RNA and DNA chains in the entry. The first graphic for a chain summarises the proportions of errors displayed in the second graphic. The second graphic shows the sequence view annotated by issues in geometry and electron density. Residues are color-coded according to the number of geometric quality criteria for which they contain at least one outlier: green = 0, yellow = 1, orange = 2 and red = 3 or more. A red dot above a residue indicates a poor fit to the electron density ($RSRZ > 2$). Stretches of 2 or more consecutive residues without any outlier are shown as a green connector. Residues present in the sample, but not in the model, are shown in grey.

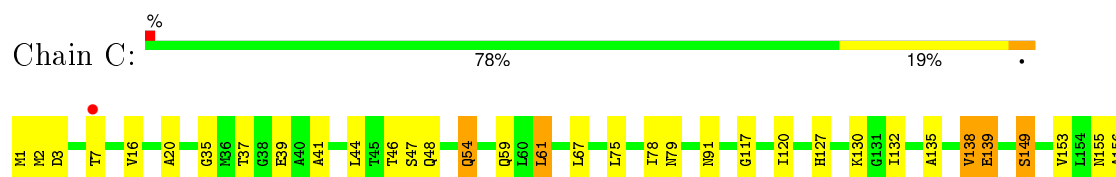
- Molecule 1: V-type sodium ATPase subunit K



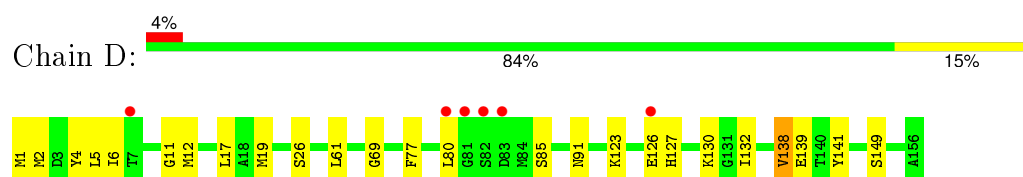
- Molecule 1: V-type sodium ATPase subunit K



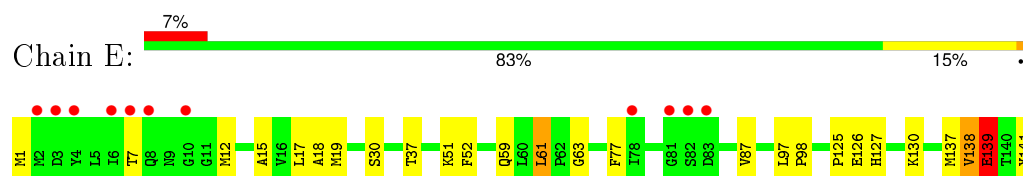
- Molecule 1: V-type sodium ATPase subunit K



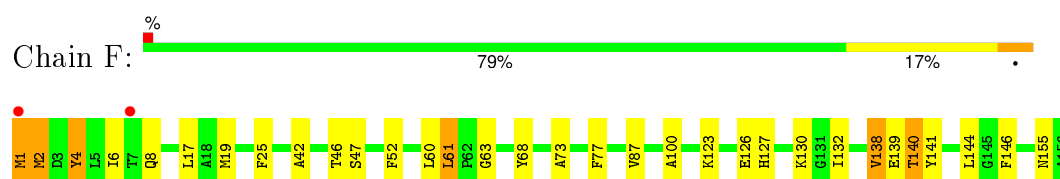
- Molecule 1: V-type sodium ATPase subunit K



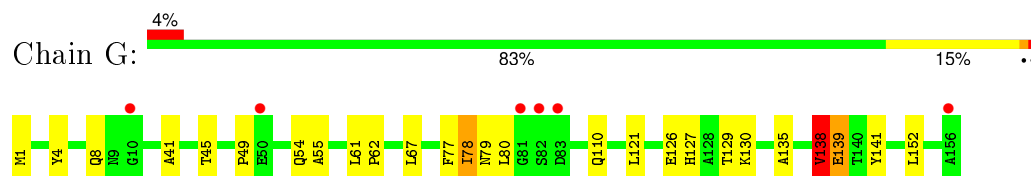
- Molecule 1: V-type sodium ATPase subunit K



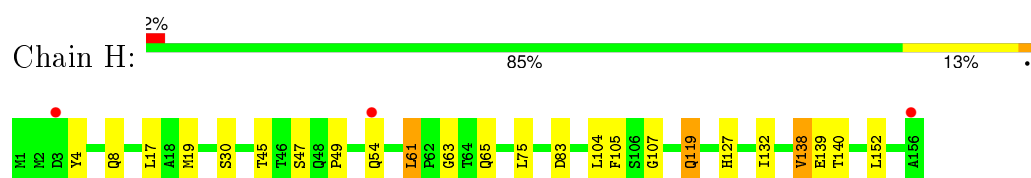
- Molecule 1: V-type sodium ATPase subunit K



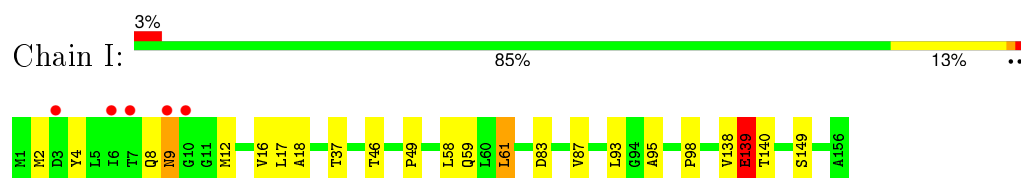
- Molecule 1: V-type sodium ATPase subunit K



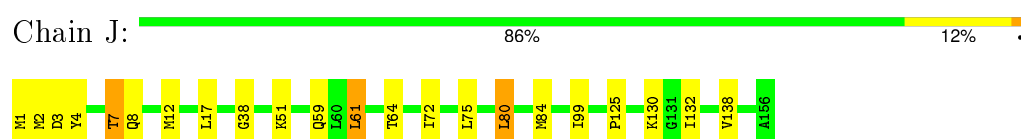
- Molecule 1: V-type sodium ATPase subunit K



- Molecule 1: V-type sodium ATPase subunit K



- Molecule 1: V-type sodium ATPase subunit K



4 Data and refinement statistics

Property	Value	Source
Space group	P 21 21 21	Depositor
Cell constants a, b, c, α , β , γ	120.41Å 124.94Å 208.22Å 90.00° 90.00° 90.00°	Depositor
Resolution (Å)	48.79 – 3.14 48.94 – 3.14	Depositor EDS
% Data completeness (in resolution range)	93.8 (48.79-3.14) 93.4 (48.94-3.14)	Depositor EDS
R_{merge}	(Not available)	Depositor
R_{sym}	(Not available)	Depositor
$\langle I/\sigma(I) \rangle$ ¹	1.95 (at 3.12Å)	Xtriage
Refinement program	REFMAC 5.5.0102	Depositor
R, R_{free}	0.209 , 0.248 0.210 , 0.247	Depositor DCC
R_{free} test set	2644 reflections (5.36%)	DCC
Wilson B-factor (Å ²)	80.3	Xtriage
Anisotropy	0.295	Xtriage
Bulk solvent k_{sol} (e/Å ³), B_{sol} (Å ²)	0.32 , 50.1	EDS
Estimated twinning fraction	0.000 for k,h,-l	Xtriage
L-test for twinning ²	$\langle L \rangle = 0.49$, $\langle L^2 \rangle = 0.32$	Xtriage
Outliers	6 of 51929 reflections (0.012%)	Xtriage
F_o, F_c correlation	0.89	EDS
Total number of atoms	11504	wwPDB-VP
Average B, all atoms (Å ²)	71.0	wwPDB-VP

Xtriage's analysis on translational NCS is as follows: *The largest off-origin peak in the Patterson function is 4.92% of the height of the origin peak. No significant pseudotranslation is detected.*

¹Intensities estimated from amplitudes.

²Theoretical values of $\langle |L| \rangle$, $\langle L^2 \rangle$ for acentric reflections are 0.5, 0.375 respectively for untwinned datasets, and 0.333, 0.2 for perfectly twinned datasets.

5 Model quality

5.1 Standard geometry

Bond lengths and bond angles in the following residue types are not validated in this section: DCW, UMQ

The Z score for a bond length (or angle) is the number of standard deviations the observed value is removed from the expected value. A bond length (or angle) with $|Z| > 5$ is considered an outlier worth inspection. RMSZ is the root-mean-square of all Z scores of the bond lengths (or angles).

Mol	Chain	Bond lengths		Bond angles	
		RMSZ	$\# Z > 5$	RMSZ	$\# Z > 5$
1	A	0.55	0/1146	0.84	5/1549 (0.3%)
1	B	0.56	0/1146	0.74	3/1549 (0.2%)
1	C	0.55	0/1146	1.01	4/1549 (0.3%)
1	D	0.52	0/1146	0.76	4/1549 (0.3%)
1	E	0.52	0/1146	0.97	6/1549 (0.4%)
1	F	0.55	0/1146	0.76	3/1549 (0.2%)
1	G	0.54	0/1146	0.83	4/1549 (0.3%)
1	H	0.57	0/1146	0.86	4/1549 (0.3%)
1	I	0.61	0/1146	0.82	5/1549 (0.3%)
1	J	0.57	0/1146	0.69	1/1549 (0.1%)
All	All	0.55	0/11460	0.83	39/15490 (0.3%)

Chiral center outliers are detected by calculating the chiral volume of a chiral center and verifying if the center is modelled as a planar moiety or with the opposite hand. A planarity outlier is detected by checking planarity of atoms in a peptide group, atoms in a mainchain group or atoms of a sidechain that are expected to be planar.

Mol	Chain	#Chirality outliers	#Planarity outliers
1	A	0	2
1	C	0	2
1	D	0	1
1	E	0	2
1	F	0	2
1	G	0	2
1	H	0	1
1	I	0	1
All	All	0	13

There are no bond length outliers.

All (39) bond angle outliers are listed below:

Mol	Chain	Res	Type	Atoms	Z	Observed(°)	Ideal(°)
1	C	138	VAL	O-C-N	-23.89	84.48	122.70
1	E	138	VAL	O-C-N	-16.34	96.56	122.70
1	C	138	VAL	C-N-CA	15.78	161.15	121.70
1	H	138	VAL	O-C-N	-15.33	98.17	122.70
1	E	138	VAL	C-N-CA	14.37	157.62	121.70
1	G	138	VAL	O-C-N	-14.18	100.01	122.70
1	G	138	VAL	C-N-CA	12.76	153.60	121.70
1	A	138	VAL	O-C-N	-12.76	102.29	122.70
1	E	139	GLU	O-C-N	-12.01	103.48	122.70
1	A	138	VAL	C-N-CA	11.95	151.58	121.70
1	B	138	VAL	C-N-CA	11.63	150.79	121.70
1	F	138	VAL	O-C-N	-11.53	104.25	122.70
1	E	138	VAL	CA-C-N	11.35	142.17	117.20
1	I	139	GLU	O-C-N	-11.11	104.93	122.70
1	D	138	VAL	C-N-CA	10.75	148.58	121.70
1	C	138	VAL	CA-C-N	10.66	140.66	117.20
1	D	138	VAL	O-C-N	-10.45	105.97	122.70
1	H	138	VAL	C-N-CA	10.29	147.43	121.70
1	E	139	GLU	CA-C-N	10.10	139.41	117.20
1	A	139	GLU	O-C-N	-9.85	106.95	122.70
1	I	138	VAL	O-C-N	-9.15	108.06	122.70
1	F	138	VAL	C-N-CA	9.13	144.53	121.70
1	I	138	VAL	C-N-CA	8.55	143.09	121.70
1	E	139	GLU	C-N-CA	8.21	142.21	121.70
1	B	138	VAL	O-C-N	-8.14	109.67	122.70
1	G	138	VAL	CA-C-N	7.26	133.18	117.20
1	H	138	VAL	CA-C-N	7.25	133.15	117.20
1	F	138	VAL	CA-C-N	6.82	132.20	117.20
1	D	138	VAL	CA-C-N	6.68	131.89	117.20
1	D	139	GLU	C-N-CA	6.58	138.15	121.70
1	A	139	GLU	C-N-CA	6.55	138.08	121.70
1	H	139	GLU	C-N-CA	6.33	137.52	121.70
1	I	138	VAL	CA-C-N	6.25	130.95	117.20
1	G	139	GLU	O-C-N	-6.15	112.86	122.70
1	C	139	GLU	C-N-CA	6.13	137.02	121.70
1	A	139	GLU	CA-C-N	5.81	129.98	117.20
1	J	138	VAL	C-N-CA	5.62	135.74	121.70
1	B	138	VAL	CA-C-N	5.45	129.19	117.20
1	I	139	GLU	C-N-CA	5.10	134.46	121.70

There are no chirality outliers.

All (13) planarity outliers are listed below:

Mol	Chain	Res	Type	Group
1	A	138	VAL	Mainchain
1	A	139	GLU	Mainchain
1	C	138	VAL	Mainchain
1	C	139	GLU	Mainchain
1	D	138	VAL	Mainchain
1	E	138	VAL	Peptide
1	E	139	GLU	Mainchain
1	F	1	MET	Peptide
1	F	138	VAL	Mainchain
1	G	138	VAL	Mainchain
1	G	139	GLU	Mainchain
1	H	138	VAL	Mainchain
1	I	139	GLU	Mainchain

5.2 Too-close contacts ⓘ

In the following table, the Non-H and H(model) columns list the number of non-hydrogen atoms and hydrogen atoms in the chain respectively. The H(added) column lists the number of hydrogen atoms added and optimized by MolProbity. The Clashes column lists the number of clashes within the asymmetric unit, whereas Symm-Clashes lists symmetry related clashes.

Mol	Chain	Non-H	H(model)	H(added)	Clashes	Symm-Clashes
1	A	1127	0	1180	15	0
1	B	1127	0	1181	17	0
1	C	1127	0	1180	21	0
1	D	1127	0	1180	19	0
1	E	1127	0	1180	20	0
1	F	1127	0	1181	30	0
1	G	1127	0	1181	21	0
1	H	1127	0	1180	11	0
1	I	1127	0	1181	13	0
1	J	1127	0	1181	11	0
2	A	16	0	23	0	0
2	B	16	0	23	1	0
2	C	16	0	23	0	0
2	D	16	0	23	0	0
2	E	16	0	23	0	0
2	F	16	0	23	0	0
2	G	16	0	23	0	0
2	H	16	0	23	0	0
2	I	16	0	23	0	0
2	J	16	0	23	0	0
3	C	34	0	44	1	0

Continued on next page...

Continued from previous page...

Mol	Chain	Non-H	H(model)	H(added)	Clashes	Symm-Clashes
3	F	34	0	44	0	0
4	G	1	0	0	0	0
4	H	1	0	0	0	0
4	I	2	0	0	0	0
4	J	2	0	0	0	0
All	All	11504	0	12123	141	0

The all-atom clashscore is defined as the number of clashes found per 1000 atoms (including hydrogen atoms). The all-atom clashscore for this structure is 6.

All (141) close contacts within the same asymmetric unit are listed below, sorted by their clash magnitude.

Atom-1	Atom-2	Interatomic distance (Å)	Clash overlap (Å)
1:F:1:MET:HG3	1:F:2:MET:H	1.37	0.89
1:A:1:MET:HB2	1:J:2:MET:HG2	1.68	0.76
1:F:87:VAL:HG23	1:G:4:TYR:HE2	1.50	0.74
1:F:1:MET:HG3	1:F:2:MET:N	2.04	0.73
1:F:87:VAL:HG23	1:G:4:TYR:CE2	2.26	0.71
1:I:9:ASN:OD1	1:I:83:ASP:HA	1.90	0.70
1:C:91:ASN:HB3	1:C:156:ALA:HB1	1.75	0.68
1:A:2:MET:HG2	1:B:1:MET:HB2	1.78	0.66
1:F:68:TYR:HB3	1:F:146:PHE:CD1	2.31	0.66
1:C:149:SER:O	1:C:153:VAL:HG23	1.96	0.64
1:G:77:PHE:HA	1:G:80:LEU:HD23	1.81	0.62
1:C:61:LEU:HD21	1:C:132:ILE:HG23	1.84	0.60
1:F:2:MET:HG3	1:G:1:MET:HB2	1.83	0.60
1:G:110:GLN:HG3	1:G:138:VAL:HB	1.85	0.59
1:C:44:LEU:HD11	1:C:48:GLN:HE21	1.69	0.57
1:C:127:HIS:HB3	1:C:130:LYS:HD2	1.85	0.57
1:F:4:TYR:CE1	1:F:8:GLN:HG3	2.40	0.57
1:I:2:MET:HG2	1:J:1:MET:HB2	1.86	0.57
1:J:61:LEU:HD21	1:J:132:ILE:HG23	1.85	0.57
1:B:4:TYR:CD1	1:B:8:GLN:HG3	2.40	0.56
1:J:80:LEU:HG	1:J:80:LEU:O	2.04	0.56
1:C:91:ASN:HD21	1:D:12:MET:HG2	1.71	0.55
1:D:91:ASN:HD21	1:E:12:MET:HG2	1.71	0.55
1:G:61:LEU:HD23	1:G:135:ALA:HB3	1.89	0.55
1:B:119:GLN:HB3	1:C:46:THR:HG21	1.88	0.55
1:H:61:LEU:HD21	1:H:132:ILE:HG23	1.88	0.55
1:B:2:MET:HG2	1:C:1:MET:HB2	1.89	0.55
1:F:42:ALA:O	1:F:46:THR:HG23	2.07	0.54

Continued on next page...

Continued from previous page...

Atom-1	Atom-2	Interatomic distance (Å)	Clash overlap (Å)
1:E:87:VAL:HG23	1:F:4:TYR:OH	2.09	0.53
1:D:130:LYS:HG2	1:E:52:PHE:CD1	2.44	0.53
1:E:37:THR:HG21	1:E:59:GLN:HA	1.90	0.53
1:H:4:TYR:CE1	1:H:8:GLN:HG3	2.44	0.53
1:A:54:GLN:HB2	1:A:121:LEU:HD21	1.90	0.52
1:H:119:GLN:HB3	1:I:46:THR:HG21	1.92	0.52
1:H:152:LEU:HD13	1:I:16:VAL:HG13	1.91	0.52
1:E:51:LYS:HE2	1:E:125:PRO:HB3	1.92	0.52
1:F:123:LYS:HE2	1:F:123:LYS:HA	1.91	0.51
1:D:2:MET:CG	1:E:1:MET:HB2	2.41	0.51
1:E:19:MET:CE	1:E:77:PHE:HB2	2.41	0.51
1:H:104:LEU:HD23	1:H:105:PHE:CE1	2.46	0.50
1:E:137:MET:SD	1:F:60:LEU:HD21	2.51	0.50
1:B:143:ILE:O	1:B:147:VAL:HG23	2.12	0.50
1:E:37:THR:CG2	1:E:59:GLN:HA	2.42	0.50
1:I:4:TYR:CD1	1:I:8:GLN:HG3	2.47	0.49
1:D:2:MET:HA	1:D:5:LEU:HD12	1.95	0.49
1:C:2:MET:HG2	1:D:1:MET:HB2	1.95	0.48
1:F:139:GLU:O	1:F:141:TYR:N	2.46	0.48
1:F:1:MET:CG	1:F:2:MET:H	2.13	0.48
1:B:98:PRO:HG3	1:C:20:ALA:HA	1.95	0.48
1:G:77:PHE:HA	1:G:80:LEU:CD2	2.43	0.47
1:F:19:MET:CE	1:F:77:PHE:HB2	2.44	0.47
1:F:2:MET:CG	1:G:1:MET:HB2	2.44	0.47
1:B:3:ASP:HA	1:B:6:ILE:HD12	1.95	0.47
1:A:61:LEU:HD23	1:A:135:ALA:HB3	1.97	0.47
1:F:144:LEU:HD11	1:G:67:LEU:HD23	1.96	0.47
1:D:61:LEU:HD21	1:D:132:ILE:HG23	1.96	0.47
1:I:18:ALA:HB2	1:I:93:LEU:HA	1.96	0.47
1:G:45:THR:HG23	1:G:49:PRO:HA	1.96	0.47
1:C:78:ILE:HG13	1:C:79:ASN:ND2	2.30	0.46
1:F:127:HIS:HB3	1:F:130:LYS:HD2	1.95	0.46
1:E:141:TYR:OH	1:F:63:GLY:HA2	2.15	0.46
1:H:54:GLN:OE1	1:H:54:GLN:HA	2.16	0.46
1:B:144:LEU:HD11	1:C:67:LEU:HD23	1.97	0.46
1:C:54:GLN:HG2	1:C:54:GLN:H	1.29	0.46
1:A:44:LEU:HD13	1:A:122:ALA:HB2	1.95	0.46
1:G:54:GLN:HB2	1:G:121:LEU:HD21	1.97	0.46
1:B:152:LEU:HD22	1:C:16:VAL:HG13	1.97	0.46
1:D:61:LEU:HA	1:D:61:LEU:HD12	1.78	0.46
1:C:78:ILE:HG13	1:C:79:ASN:HD22	1.81	0.46

Continued on next page...

Continued from previous page...

Atom-1	Atom-2	Interatomic distance (Å)	Clash overlap (Å)
1:E:141:TYR:OH	1:F:63:GLY:CA	2.63	0.46
1:J:38:GLY:N	1:J:59:GLN:HG3	2.31	0.46
1:G:152:LEU:HD21	1:H:19:MET:SD	2.56	0.45
1:G:127:HIS:HB3	1:G:130:LYS:HD2	1.97	0.45
1:A:12:MET:O	1:A:16:VAL:HG23	2.16	0.45
1:D:19:MET:CE	1:D:77:PHE:HB2	2.46	0.45
1:A:41:ALA:HB1	1:A:55:ALA:HB1	1.99	0.45
1:F:61:LEU:HA	1:F:61:LEU:HD12	1.79	0.45
1:A:78:ILE:HG13	1:A:79:ASN:ND2	2.31	0.45
1:C:37:THR:CG2	1:C:59:GLN:HA	2.47	0.45
1:J:80:LEU:HA	1:J:84:MET:CE	2.47	0.44
1:G:126:GLU:HG2	1:G:127:HIS:CD2	2.51	0.44
1:E:61:LEU:HD13	1:E:61:LEU:HA	1.78	0.44
1:I:4:TYR:CE1	1:I:8:GLN:HG3	2.51	0.44
1:J:7:THR:HB	1:J:8:GLN:HE21	1.82	0.44
1:G:4:TYR:CD1	1:G:8:GLN:HG3	2.53	0.44
1:F:6:ILE:HG23	1:G:4:TYR:CD1	2.53	0.43
1:I:87:VAL:HG23	1:J:4:TYR:CE2	2.53	0.43
1:A:25:PHE:HB2	1:A:100:ALA:HB1	1.99	0.43
1:I:37:THR:HG21	1:I:59:GLN:HA	2.00	0.43
1:I:17:LEU:HD23	1:I:17:LEU:HA	1.77	0.43
1:C:117:GLY:O	1:C:120:ILE:HB	2.18	0.43
1:C:35:GLY:O	1:C:39:GLU:HG3	2.19	0.43
1:E:97:LEU:N	1:E:98:PRO:CD	2.82	0.43
1:F:6:ILE:HD11	1:G:1:MET:HA	2.00	0.43
1:A:60:LEU:O	1:A:61:LEU:C	2.57	0.43
1:F:126:GLU:HG2	1:F:127:HIS:CD2	2.53	0.43
1:F:139:GLU:O	1:F:140:THR:C	2.57	0.43
1:F:61:LEU:HD21	1:F:132:ILE:HG23	2.01	0.43
1:G:141:TYR:OH	1:H:63:GLY:CA	2.67	0.43
1:B:1:MET:O	1:B:3:ASP:N	2.51	0.42
1:G:61:LEU:N	1:G:62:PRO:HD2	2.34	0.42
1:B:61:LEU:C	1:B:63:GLY:H	2.22	0.42
1:D:2:MET:HG2	1:E:1:MET:HB2	2.00	0.42
1:D:19:MET:HE1	1:D:77:PHE:HB2	2.00	0.42
1:F:19:MET:HE3	1:F:73:ALA:O	2.20	0.42
1:A:149:SER:O	1:A:153:VAL:HG23	2.19	0.42
1:G:41:ALA:HB1	1:G:55:ALA:HB1	2.01	0.42
1:E:15:ALA:O	1:E:18:ALA:HB3	2.18	0.42
1:J:72:ILE:HG13	1:J:99:ILE:HG21	2.01	0.42
1:J:51:LYS:HE2	1:J:125:PRO:HB3	2.00	0.42

Continued on next page...

Continued from previous page...

Atom-1	Atom-2	Interatomic distance (Å)	Clash overlap (Å)
1:A:49:PRO:O	1:J:130:LYS:HE2	2.20	0.42
1:G:78:ILE:HG13	1:G:79:ASN:HD22	1.85	0.42
1:H:127:HIS:CE1	1:I:49:PRO:HB2	2.55	0.42
1:D:6:ILE:HD11	1:E:1:MET:HA	2.02	0.42
1:A:12:MET:O	1:A:12:MET:HG2	2.18	0.42
1:E:130:LYS:HG2	1:F:52:PHE:CD1	2.55	0.42
1:C:61:LEU:HD23	1:C:135:ALA:HB3	2.02	0.42
1:F:19:MET:HE1	1:F:77:PHE:HB2	2.01	0.42
1:I:95:ALA:O	1:I:98:PRO:HD2	2.19	0.42
1:A:80:LEU:HD12	1:A:80:LEU:HA	1.76	0.42
1:D:123:LYS:HD2	1:D:123:LYS:N	2.34	0.41
1:D:126:GLU:HG2	1:D:127:HIS:CD2	2.55	0.41
1:A:137:MET:SD	1:B:60:LEU:HD21	2.60	0.41
1:D:141:TYR:CZ	1:E:30:SER:HB3	2.55	0.41
1:D:141:TYR:OH	1:E:63:GLY:CA	2.68	0.41
1:F:25:PHE:HB2	1:F:100:ALA:HB1	2.02	0.41
1:B:61:LEU:HD12	2:B:201:DCW:H61C	2.03	0.41
1:B:80:LEU:HB2	1:B:81:GLY:H	1.77	0.41
1:E:126:GLU:HG2	1:E:127:HIS:CD2	2.55	0.41
1:H:45:THR:HG23	1:H:49:PRO:HA	2.01	0.41
1:D:11:GLY:HA3	1:D:85:SER:O	2.21	0.41
1:B:32:LYS:HD3	1:B:108:ILE:HD11	2.01	0.41
3:C:202:UMQ:HF2	3:C:202:UMQ:HL3	2.01	0.41
1:D:127:HIS:HB3	1:D:130:LYS:HD2	2.03	0.41
1:C:78:ILE:C	1:C:79:ASN:HD22	2.24	0.41
1:D:26:SER:OG	1:D:69:GLY:HA3	2.20	0.41
1:F:4:TYR:CD1	1:F:8:GLN:HG3	2.56	0.41
1:B:95:ALA:HB2	1:B:152:LEU:HB3	2.03	0.40
1:B:134:PHE:CZ	1:C:41:ALA:HB1	2.56	0.40
1:I:58:LEU:HA	1:I:61:LEU:HD22	2.02	0.40
1:H:65:GLN:NE2	1:H:107:GLY:HA2	2.36	0.40

There are no symmetry-related clashes.

5.3 Torsion angles [i](#)

5.3.1 Protein backbone [i](#)

In the following table, the Percentiles column shows the percent Ramachandran outliers of the chain as a percentile score with respect to all X-ray entries followed by that with respect to entries of similar resolution.

The Analysed column shows the number of residues for which the backbone conformation was analysed, and the total number of residues.

Mol	Chain	Analysed	Favoured	Allowed	Outliers	Percentiles	
1	A	154/156 (99%)	144 (94%)	8 (5%)	2 (1%)	15	51
1	B	154/156 (99%)	144 (94%)	8 (5%)	2 (1%)	15	51
1	C	154/156 (99%)	145 (94%)	9 (6%)	0	100	100
1	D	154/156 (99%)	149 (97%)	5 (3%)	0	100	100
1	E	154/156 (99%)	146 (95%)	7 (4%)	1 (1%)	30	70
1	F	154/156 (99%)	142 (92%)	11 (7%)	1 (1%)	30	70
1	G	154/156 (99%)	146 (95%)	7 (4%)	1 (1%)	30	70
1	H	154/156 (99%)	148 (96%)	5 (3%)	1 (1%)	30	70
1	I	154/156 (99%)	145 (94%)	7 (4%)	2 (1%)	15	51
1	J	154/156 (99%)	146 (95%)	8 (5%)	0	100	100
All	All	1540/1560 (99%)	1455 (94%)	75 (5%)	10 (1%)	30	70

All (10) Ramachandran outliers are listed below:

Mol	Chain	Res	Type
1	E	139	GLU
1	F	140	THR
1	B	2	MET
1	H	140	THR
1	I	140	THR
1	B	139	GLU
1	A	80	LEU
1	I	139	GLU
1	A	24	ILE
1	G	78	ILE

5.3.2 Protein sidechains ⓘ

In the following table, the Percentiles column shows the percent sidechain outliers of the chain as a percentile score with respect to all X-ray entries followed by that with respect to entries of similar resolution.

The Analysed column shows the number of residues for which the sidechain conformation was analysed, and the total number of residues.

Mol	Chain	Analysed	Rotameric	Outliers	Percentiles	
1	A	113/113 (100%)	106 (94%)	7 (6%)	23	59
1	B	113/113 (100%)	104 (92%)	9 (8%)	15	48
1	C	113/113 (100%)	105 (93%)	8 (7%)	18	54
1	D	113/113 (100%)	109 (96%)	4 (4%)	43	79
1	E	113/113 (100%)	110 (97%)	3 (3%)	52	83
1	F	113/113 (100%)	107 (95%)	6 (5%)	28	64
1	G	113/113 (100%)	112 (99%)	1 (1%)	84	94
1	H	113/113 (100%)	106 (94%)	7 (6%)	23	59
1	I	113/113 (100%)	108 (96%)	5 (4%)	35	72
1	J	113/113 (100%)	105 (93%)	8 (7%)	18	54
All	All	1130/1130 (100%)	1072 (95%)	58 (5%)	29	66

All (58) residues with a non-rotameric sidechain are listed below:

Mol	Chain	Res	Type
1	A	3	ASP
1	A	7	THR
1	A	37	THR
1	A	61	LEU
1	A	64	THR
1	A	80	LEU
1	A	155	ASN
1	B	3	ASP
1	B	30	SER
1	B	61	LEU
1	B	80	LEU
1	B	82	SER
1	B	83	ASP
1	B	108	ILE
1	B	119	GLN
1	B	155	ASN
1	C	3	ASP
1	C	7	THR
1	C	47	SER
1	C	54	GLN
1	C	61	LEU
1	C	75	LEU
1	C	149	SER
1	C	155	ASN

Continued on next page...

Continued from previous page...

Mol	Chain	Res	Type
1	D	4	TYR
1	D	17	LEU
1	D	80	LEU
1	D	149	SER
1	E	7	THR
1	E	17	LEU
1	E	61	LEU
1	F	2	MET
1	F	4	TYR
1	F	17	LEU
1	F	47	SER
1	F	61	LEU
1	F	155	ASN
1	G	129	THR
1	H	17	LEU
1	H	30	SER
1	H	47	SER
1	H	61	LEU
1	H	75	LEU
1	H	83	ASP
1	H	119	GLN
1	I	9	ASN
1	I	12	MET
1	I	61	LEU
1	I	139	GLU
1	I	149	SER
1	J	3	ASP
1	J	7	THR
1	J	12	MET
1	J	17	LEU
1	J	61	LEU
1	J	64	THR
1	J	75	LEU
1	J	80	LEU

Some sidechains can be flipped to improve hydrogen bonding and reduce clashes. All (11) such sidechains are listed below:

Mol	Chain	Res	Type
1	A	79	ASN
1	B	155	ASN
1	C	9	ASN
1	C	48	GLN

Continued on next page...

Continued from previous page...

Mol	Chain	Res	Type
1	C	79	ASN
1	C	155	ASN
1	F	54	GLN
1	F	155	ASN
1	G	79	ASN
1	I	48	GLN
1	J	8	GLN

5.3.3 RNA ⓘ

There are no RNA molecules in this entry.

5.4 Non-standard residues in protein, DNA, RNA chains ⓘ

There are no non-standard protein/DNA/RNA residues in this entry.

5.5 Carbohydrates ⓘ

There are no carbohydrates in this entry.

5.6 Ligand geometry ⓘ

12 ligands are modelled in this entry.

In the following table, the Counts columns list the number of bonds (or angles) for which Mogul statistics could be retrieved, the number of bonds (or angles) that are observed in the model and the number of bonds (or angles) that are defined in the chemical component dictionary. The Link column lists molecule types, if any, to which the group is linked. The Z score for a bond length (or angle) is the number of standard deviations the observed value is removed from the expected value. A bond length (or angle) with $|Z| > 2$ is considered an outlier worth inspection. RMSZ is the root-mean-square of all Z scores of the bond lengths (or angles).

Mol	Type	Chain	Res	Link	Bond lengths			Bond angles		
					Counts	RMSZ	# Z > 2	Counts	RMSZ	# Z > 2
2	DCW	A	201	1	17,17,17	1.33	2 (11%)	21,21,21	1.78	5 (23%)
2	DCW	B	201	1	17,17,17	1.32	2 (11%)	21,21,21	1.64	4 (19%)
2	DCW	C	201	1	17,17,17	1.20	2 (11%)	21,21,21	1.69	5 (23%)
3	UMQ	C	202	-	35,35,35	0.65	1 (2%)	46,46,46	1.04	2 (4%)
2	DCW	D	201	1	17,17,17	1.37	2 (11%)	21,21,21	1.62	5 (23%)

Mol	Type	Chain	Res	Link	Bond lengths			Bond angles		
					Counts	RMSZ	# Z > 2	Counts	RMSZ	# Z > 2
2	DCW	E	201	1	17,17,17	1.22	2 (11%)	21,21,21	1.51	4 (19%)
2	DCW	F	201	1	17,17,17	1.31	2 (11%)	21,21,21	1.42	5 (23%)
3	UMQ	F	202	-	35,35,35	0.53	1 (2%)	46,46,46	1.09	2 (4%)
2	DCW	G	201	1	17,17,17	1.21	2 (11%)	21,21,21	2.08	7 (33%)
2	DCW	H	201	1	17,17,17	1.16	2 (11%)	21,21,21	1.63	6 (28%)
2	DCW	I	201	1	17,17,17	1.19	2 (11%)	21,21,21	1.61	4 (19%)
2	DCW	J	201	1	17,17,17	1.30	2 (11%)	21,21,21	1.56	5 (23%)

In the following table, the Chirals column lists the number of chiral outliers, the number of chiral centers analysed, the number of these observed in the model and the number defined in the chemical component dictionary. Similar counts are reported in the Torsion and Rings columns. '-' means no outliers of that kind were identified.

Mol	Type	Chain	Res	Link	Chirals	Torsions	Rings
2	DCW	A	201	1	-	0/8/24/24	0/2/2/2
2	DCW	B	201	1	-	0/8/24/24	0/2/2/2
2	DCW	C	201	1	-	0/8/24/24	0/2/2/2
3	UMQ	C	202	-	-	0/20/60/60	0/2/2/2
2	DCW	D	201	1	-	0/8/24/24	0/2/2/2
2	DCW	E	201	1	-	0/8/24/24	0/2/2/2
2	DCW	F	201	1	-	0/8/24/24	0/2/2/2
3	UMQ	F	202	-	-	0/20/60/60	0/2/2/2
2	DCW	G	201	1	-	0/8/24/24	0/2/2/2
2	DCW	H	201	1	-	0/8/24/24	0/2/2/2
2	DCW	I	201	1	-	0/8/24/24	0/2/2/2
2	DCW	J	201	1	-	0/8/24/24	0/2/2/2

All (22) bond length outliers are listed below:

Mol	Chain	Res	Type	Atoms	Z	Observed(Å)	Ideal(Å)
3	F	202	UMQ	O1'-C1'	2.13	1.44	1.40
2	H	201	DCW	C2-N1	2.23	1.51	1.46
2	C	201	DCW	C2-N1	2.37	1.51	1.46
2	I	201	DCW	C2-N1	2.41	1.51	1.46
3	C	202	UMQ	O1'-C1'	2.51	1.44	1.40
2	J	201	DCW	C2-N1	2.65	1.51	1.46
2	F	201	DCW	C2-N1	2.65	1.51	1.46
2	A	201	DCW	C2-N1	2.75	1.52	1.46
2	E	201	DCW	C2-N1	2.94	1.52	1.46
2	G	201	DCW	C2-N1	2.95	1.52	1.46
2	B	201	DCW	C2-N1	3.00	1.52	1.46

Continued on next page...

Continued from previous page...

Mol	Chain	Res	Type	Atoms	Z	Observed(Å)	Ideal(Å)
2	D	201	DCW	C2-N1	3.01	1.52	1.46
2	E	201	DCW	C1-N1	3.45	1.45	1.35
2	G	201	DCW	C1-N1	3.47	1.45	1.35
2	I	201	DCW	C1-N1	3.67	1.45	1.35
2	H	201	DCW	C1-N1	3.82	1.45	1.35
2	C	201	DCW	C1-N1	3.84	1.46	1.35
2	B	201	DCW	C1-N1	3.98	1.46	1.35
2	A	201	DCW	C1-N1	4.14	1.46	1.35
2	F	201	DCW	C1-N1	4.14	1.46	1.35
2	J	201	DCW	C1-N1	4.20	1.47	1.35
2	D	201	DCW	C1-N1	4.22	1.47	1.35

All (54) bond angle outliers are listed below:

Mol	Chain	Res	Type	Atoms	Z	Observed(°)	Ideal(°)
2	A	201	DCW	C13-C8-N2	-4.27	102.65	110.56
2	G	201	DCW	C9-C8-N2	-3.90	103.33	110.56
2	H	201	DCW	C13-C8-N2	-3.86	103.41	110.56
2	I	201	DCW	C13-C8-N2	-3.73	103.65	110.56
2	G	201	DCW	C13-C8-N2	-3.60	103.89	110.56
2	I	201	DCW	C9-C8-N2	-3.59	103.91	110.56
2	J	201	DCW	C13-C8-N2	-3.53	104.02	110.56
2	G	201	DCW	C2-N1-C1	-3.41	114.51	123.28
2	G	201	DCW	C6-C7-C2	-3.24	106.12	111.13
2	C	201	DCW	C2-N1-C1	-3.22	114.98	123.28
2	D	201	DCW	C13-C8-N2	-3.09	104.84	110.56
2	J	201	DCW	C2-N1-C1	-3.03	115.47	123.28
2	I	201	DCW	C2-N1-C1	-3.01	115.53	123.28
2	F	201	DCW	C2-N1-C1	-2.97	115.63	123.28
2	E	201	DCW	C13-C8-N2	-2.96	105.08	110.56
2	H	201	DCW	C2-N1-C1	-2.85	115.94	123.28
2	F	201	DCW	C13-C8-N2	-2.80	105.37	110.56
2	E	201	DCW	C2-N1-C1	-2.76	116.18	123.28
2	D	201	DCW	C9-C8-N2	-2.64	105.67	110.56
2	B	201	DCW	C13-C8-N2	-2.63	105.68	110.56
2	A	201	DCW	C4-C3-C2	-2.46	107.33	111.13
2	G	201	DCW	C7-C2-C3	-2.45	106.65	110.82
2	J	201	DCW	C9-C8-N2	-2.37	106.17	110.56
2	A	201	DCW	C9-C8-N2	-2.35	106.21	110.56
2	H	201	DCW	C6-C7-C2	-2.32	107.55	111.13
2	E	201	DCW	C9-C8-N2	-2.30	106.30	110.56
2	C	201	DCW	C6-C7-C2	-2.27	107.62	111.13

Continued on next page...

Continued from previous page...

Mol	Chain	Res	Type	Atoms	Z	Observed(°)	Ideal(°)
2	D	201	DCW	C2-N1-C1	-2.25	117.48	123.28
2	F	201	DCW	C9-C8-N2	-2.21	106.46	110.56
2	H	201	DCW	C9-C8-N2	-2.10	106.67	110.56
3	C	202	UMQ	O1-C1-C2	2.03	113.05	108.10
2	B	201	DCW	C11-C10-C9	2.04	115.71	111.44
2	H	201	DCW	C8-N2-C1	2.04	128.53	123.28
2	F	201	DCW	C12-C13-C8	2.07	114.33	111.13
2	I	201	DCW	C7-C2-N1	2.32	114.85	110.56
2	G	201	DCW	C3-C2-N1	2.34	114.89	110.56
2	J	201	DCW	C7-C2-N1	2.36	114.93	110.56
2	F	201	DCW	C7-C2-N1	2.38	114.97	110.56
2	H	201	DCW	C7-C2-N1	2.41	115.01	110.56
2	C	201	DCW	C3-C2-N1	2.42	115.03	110.56
2	J	201	DCW	N2-C1-N1	2.58	119.35	115.08
2	D	201	DCW	N2-C1-N1	2.63	119.43	115.08
2	A	201	DCW	C7-C2-N1	2.75	115.65	110.56
2	C	201	DCW	N2-C1-N1	2.85	119.80	115.08
3	C	202	UMQ	O1'-C1'-C2'	2.86	111.65	108.04
2	C	201	DCW	C7-C2-N1	2.89	115.91	110.56
2	B	201	DCW	C7-C2-N1	3.11	116.32	110.56
2	E	201	DCW	C7-C2-N1	3.29	116.66	110.56
2	D	201	DCW	C7-C2-N1	3.32	116.71	110.56
2	A	201	DCW	C3-C2-N1	3.35	116.76	110.56
3	F	202	UMQ	O5'-C5'-C4'	3.50	117.14	109.75
2	B	201	DCW	C3-C2-N1	3.56	117.15	110.56
2	G	201	DCW	C7-C2-N1	4.02	118.01	110.56
3	F	202	UMQ	C1'-O5'-C5'	4.06	121.63	113.75

There are no chirality outliers.

There are no torsion outliers.

There are no ring outliers.

2 monomers are involved in 2 short contacts:

Mol	Chain	Res	Type	Clashes	Symm-Clashes
2	B	201	DCW	1	0
3	C	202	UMQ	1	0

5.7 Other polymers

There are no such residues in this entry.

5.8 Polymer linkage issues ⓘ

There are no chain breaks in this entry.

6 Fit of model and data

6.1 Protein, DNA and RNA chains

In the following table, the column labelled ‘#RSRZ> 2’ contains the number (and percentage) of RSRZ outliers, followed by percent RSRZ outliers for the chain as percentile scores relative to all X-ray entries and entries of similar resolution. The OWAB column contains the minimum, median, 95th percentile and maximum values of the occupancy-weighted average B-factor per residue. The column labelled ‘Q< 0.9’ lists the number of (and percentage) of residues with an average occupancy less than 0.9.

Mol	Chain	Analysed	<RSRZ>	#RSRZ>2	OWAB(Å ²)	Q<0.9
1	A	156/156 (100%)	0.20	10 (6%) 23 8	49, 66, 108, 118	0
1	B	156/156 (100%)	-0.08	1 (0%) 90 81	51, 69, 115, 124	0
1	C	156/156 (100%)	-0.47	1 (0%) 90 81	55, 73, 125, 135	0
1	D	156/156 (100%)	-0.19	6 (3%) 44 22	56, 75, 127, 141	0
1	E	156/156 (100%)	-0.04	11 (7%) 19 7	53, 73, 132, 142	0
1	F	156/156 (100%)	-0.36	2 (1%) 79 63	49, 68, 129, 141	0
1	G	156/156 (100%)	0.04	6 (3%) 44 22	47, 64, 118, 136	0
1	H	156/156 (100%)	-0.14	3 (1%) 70 49	42, 56, 98, 108	0
1	I	156/156 (100%)	-0.15	5 (3%) 51 28	42, 51, 81, 95	0
1	J	156/156 (100%)	-0.26	0 100 100	41, 56, 74, 87	0
All	All	1560/1560 (100%)	-0.14	45 (2%) 55 32	41, 66, 113, 142	0

All (45) RSRZ outliers are listed below:

Mol	Chain	Res	Type	RSRZ
1	E	7	THR	4.2
1	E	82	SER	4.0
1	D	7	THR	3.8
1	G	156	ALA	3.7
1	I	3	ASP	3.6
1	D	83	ASP	3.4
1	A	125	PRO	3.2
1	F	7	THR	3.2
1	D	82	SER	3.1
1	E	3	ASP	3.0
1	I	7	THR	3.0
1	E	4	TYR	3.0
1	D	81	GLY	2.9

Continued on next page...

Continued from previous page...

Mol	Chain	Res	Type	RSRZ
1	G	50	GLU	2.9
1	A	126	GLU	2.8
1	E	6	ILE	2.7
1	F	1	MET	2.6
1	H	54	GLN	2.6
1	A	3	ASP	2.6
1	A	155	ASN	2.6
1	B	47	SER	2.5
1	G	81	GLY	2.5
1	E	83	ASP	2.5
1	E	8	GLN	2.5
1	D	80	LEU	2.4
1	I	6	ILE	2.4
1	E	81	GLY	2.4
1	G	83	ASP	2.4
1	C	7	THR	2.4
1	G	82	SER	2.3
1	A	83	ASP	2.3
1	A	56	LEU	2.3
1	H	3	ASP	2.3
1	D	126	GLU	2.2
1	A	127	HIS	2.2
1	A	6	ILE	2.2
1	H	156	ALA	2.2
1	I	10	GLY	2.2
1	A	7	THR	2.2
1	E	2	MET	2.1
1	E	10	GLY	2.1
1	E	78	ILE	2.1
1	I	9	ASN	2.1
1	G	10	GLY	2.1
1	A	82	SER	2.0

6.2 Non-standard residues in protein, DNA, RNA chains [i](#)

There are no non-standard protein/DNA/RNA residues in this entry.

6.3 Carbohydrates [i](#)

There are no carbohydrates in this entry.

6.4 Ligands [i](#)

In the following table, the Atoms column lists the number of modelled atoms in the group and the number defined in the chemical component dictionary. LLDF column lists the quality of electron density of the group with respect to its neighbouring residues in protein, DNA or RNA chains. The B-factors column lists the minimum, median, 95th percentile and maximum values of B factors of atoms in the group. The column labelled 'Q< 0.9' lists the number of atoms with occupancy less than 0.9.

Mol	Type	Chain	Res	Atoms	RSCC	RSR	LLDF	B-factors(Å ²)	Q<0.9
2	DCW	G	201	16/16	0.96	0.59	12.94	73,76,77,78	0
2	DCW	J	201	16/16	0.93	0.65	10.66	71,76,82,83	0
2	DCW	H	201	16/16	0.93	0.29	5.15	68,70,72,75	0
2	DCW	A	201	16/16	0.97	0.50	4.98	76,82,89,89	0
2	DCW	D	201	16/16	0.94	0.25	4.91	89,94,98,99	0
2	DCW	B	201	16/16	0.96	0.34	4.42	79,82,86,86	0
2	DCW	C	201	16/16	0.96	0.29	3.66	89,91,93,93	0
2	DCW	F	201	16/16	0.95	0.25	3.62	80,84,86,87	0
3	UMQ	C	202	34/34	0.84	0.33	3.23	142,148,151,154	0
3	UMQ	F	202	34/34	0.88	0.34	2.17	122,130,133,136	0
2	DCW	E	201	16/16	0.95	0.20	1.21	88,91,94,95	0
2	DCW	I	201	16/16	0.96	0.22	0.04	65,67,69,70	0

6.5 Other polymers [i](#)

There are no such residues in this entry.