



Full wwPDB X-ray Structure Validation Report ⓘ

Feb 1, 2016 – 02:58 PM GMT

PDB ID : 4B4G
Title : Pseudomonas aeruginosa RmlA in complex with allosteric inhibitor
Authors : Alphey, M.S.; Pirrie, L.; Torrie, L.S.; Gardiner, M.; Westwood, N.J.; Gray, D.; Naismith, J.H.
Deposited on : 2012-07-30
Resolution : 2.50 Å(reported)

This is a Full wwPDB X-ray Structure Validation Report for a publicly released PDB entry.
We welcome your comments at validation@mail.wwpdb.org
A user guide is available at
<http://wwpdb.org/validation/2016/XrayValidationReportHelp>
with specific help available everywhere you see the ⓘ symbol.

The following versions of software and data (see [references ⓘ](#)) were used in the production of this report:

MolProbity : 4.02b-467
Mogul : 1.7 (RC4), CSD as536be (2015)
Xtriage (Phenix) : 1.9-1692
EDS : rb-20026688
Percentile statistics : 20151230.v01 (using entries in the PDB archive December 30th 2015)
Refmac : 5.8.0135
CCP4 : 6.5.0
Ideal geometry (proteins) : Engh & Huber (2001)
Ideal geometry (DNA, RNA) : Parkinson et al. (1996)
Validation Pipeline (wwPDB-VP) : trunk26865

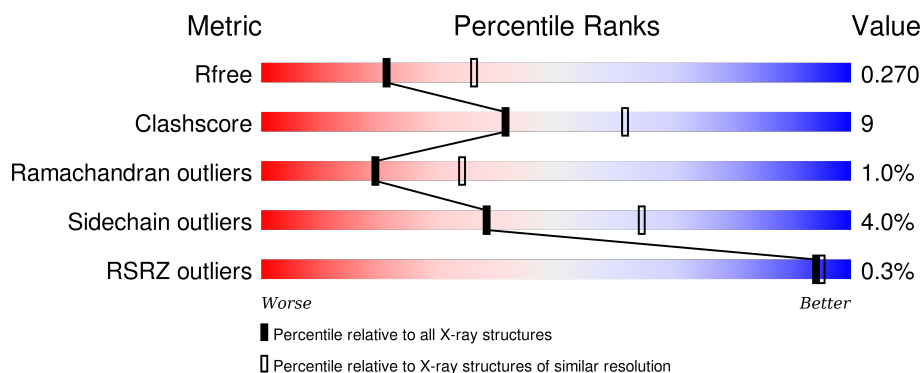
1 Overall quality at a glance

The following experimental techniques were used to determine the structure:

X-RAY DIFFRACTION

The reported resolution of this entry is 2.50 Å.

Percentile scores (ranging between 0-100) for global validation metrics of the entry are shown in the following graphic. The table shows the number of entries on which the scores are based.



Metric	Whole archive (#Entries)	Similar resolution (#Entries, resolution range(Å))
R_{free}	91344	3553 (2.50-2.50)
Clashscore	102246	4242 (2.50-2.50)
Ramachandran outliers	100387	4156 (2.50-2.50)
Sidechain outliers	100360	4158 (2.50-2.50)
RSRZ outliers	91569	3562 (2.50-2.50)

The table below summarises the geometric issues observed across the polymeric chains and their fit to the electron density. The red, orange, yellow and green segments on the lower bar indicate the fraction of residues that contain outliers for ≥ 3 , 2, 1 and 0 types of geometric quality criteria. A grey segment represents the fraction of residues that are not modelled. The numeric value for each fraction is indicated below the corresponding segment, with a dot representing fractions $\leq 5\%$. The upper red bar (where present) indicates the fraction of residues that have poor fit to the electron density. The numeric value is given above the bar.

Mol	Chain	Length	Quality of chain
1	A	303	<div> <div>79%</div> <div>16%</div> <div>• •</div> </div>
1	B	303	<div> <div>82%</div> <div>13%</div> <div>• •</div> </div>
1	C	303	<div> <div>76%</div> <div>19%</div> <div>• •</div> </div>
1	D	303	<div> <div>72%</div> <div>23%</div> <div>• •</div> </div>

The following table lists non-polymeric compounds, carbohydrate monomers and non-standard

residues in protein, DNA, RNA chains that are outliers for geometric or electron-density-fit criteria:

Mol	Type	Chain	Res	Chirality	Geometry	Clashes	Electron density
3	CL	B	1294	-	-	-	X

2 Entry composition

There are 5 unique types of molecules in this entry. The entry contains 9434 atoms, of which 0 are hydrogens and 0 are deuteriums.

In the tables below, the ZeroOcc column contains the number of atoms modelled with zero occupancy, the AltConf column contains the number of residues with at least one atom in alternate conformation and the Trace column contains the number of residues modelled with at most 2 atoms.

- Molecule 1 is a protein called GLUCOSE-1-PHOSPHATE THYMIDYLYLTRANSFERASE.

Mol	Chain	Residues	Atoms					ZeroOcc	AltConf	Trace
1	A	293	Total	C	N	O	S	0	1	0
			2299	1471	387	436	5			
1	B	290	Total	C	N	O	S	0	1	0
			2275	1458	381	431	5			
1	C	291	Total	C	N	O	S	0	1	0
			2284	1463	382	434	5			
1	D	292	Total	C	N	O	S	0	1	0
			2288	1465	383	435	5			

There are 40 discrepancies between the modelled and reference sequences:

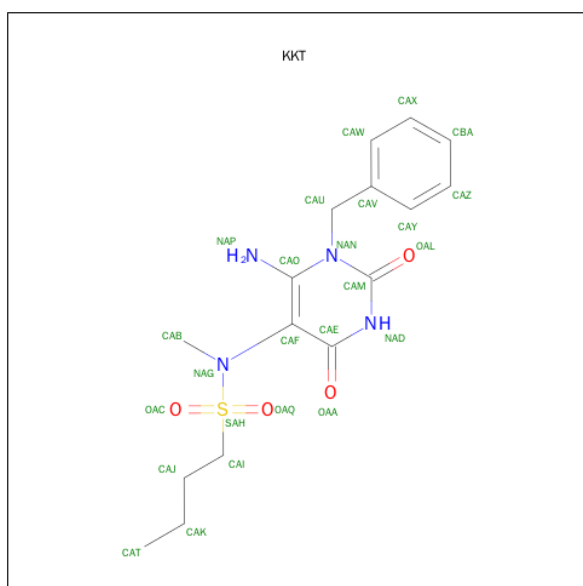
Chain	Residue	Modelled	Actual	Comment	Reference
A	-10	HIS	-	EXPRESSION TAG	UNP Q9HU22
A	-9	HIS	-	EXPRESSION TAG	UNP Q9HU22
A	-8	HIS	-	EXPRESSION TAG	UNP Q9HU22
A	-7	HIS	-	EXPRESSION TAG	UNP Q9HU22
A	-6	HIS	-	EXPRESSION TAG	UNP Q9HU22
A	-5	HIS	-	EXPRESSION TAG	UNP Q9HU22
A	-4	GLY	-	EXPRESSION TAG	UNP Q9HU22
A	-3	SER	-	EXPRESSION TAG	UNP Q9HU22
A	-2	MET	-	EXPRESSION TAG	UNP Q9HU22
A	-1	ALA	-	EXPRESSION TAG	UNP Q9HU22
B	-10	HIS	-	EXPRESSION TAG	UNP Q9HU22
B	-9	HIS	-	EXPRESSION TAG	UNP Q9HU22
B	-8	HIS	-	EXPRESSION TAG	UNP Q9HU22
B	-7	HIS	-	EXPRESSION TAG	UNP Q9HU22
B	-6	HIS	-	EXPRESSION TAG	UNP Q9HU22
B	-5	HIS	-	EXPRESSION TAG	UNP Q9HU22
B	-4	GLY	-	EXPRESSION TAG	UNP Q9HU22
B	-3	SER	-	EXPRESSION TAG	UNP Q9HU22
B	-2	MET	-	EXPRESSION TAG	UNP Q9HU22
B	-1	ALA	-	EXPRESSION TAG	UNP Q9HU22

Continued on next page...

Continued from previous page...

Chain	Residue	Modelled	Actual	Comment	Reference
C	-10	HIS	-	EXPRESSION TAG	UNP Q9HU22
C	-9	HIS	-	EXPRESSION TAG	UNP Q9HU22
C	-8	HIS	-	EXPRESSION TAG	UNP Q9HU22
C	-7	HIS	-	EXPRESSION TAG	UNP Q9HU22
C	-6	HIS	-	EXPRESSION TAG	UNP Q9HU22
C	-5	HIS	-	EXPRESSION TAG	UNP Q9HU22
C	-4	GLY	-	EXPRESSION TAG	UNP Q9HU22
C	-3	SER	-	EXPRESSION TAG	UNP Q9HU22
C	-2	MET	-	EXPRESSION TAG	UNP Q9HU22
C	-1	ALA	-	EXPRESSION TAG	UNP Q9HU22
D	-10	HIS	-	EXPRESSION TAG	UNP Q9HU22
D	-9	HIS	-	EXPRESSION TAG	UNP Q9HU22
D	-8	HIS	-	EXPRESSION TAG	UNP Q9HU22
D	-7	HIS	-	EXPRESSION TAG	UNP Q9HU22
D	-6	HIS	-	EXPRESSION TAG	UNP Q9HU22
D	-5	HIS	-	EXPRESSION TAG	UNP Q9HU22
D	-4	GLY	-	EXPRESSION TAG	UNP Q9HU22
D	-3	SER	-	EXPRESSION TAG	UNP Q9HU22
D	-2	MET	-	EXPRESSION TAG	UNP Q9HU22
D	-1	ALA	-	EXPRESSION TAG	UNP Q9HU22

- Molecule 2 is N-(6-AMINO-1-BENZYL-2,4-DIOXO-1,2,3,4-TETRAHYDROPYRIMIDIN-5-YL)-N-METHYLBUTANE-1-SULFONAMIDE (three-letter code: KKT) (formula: $C_{16}H_{22}N_4O_4S$).

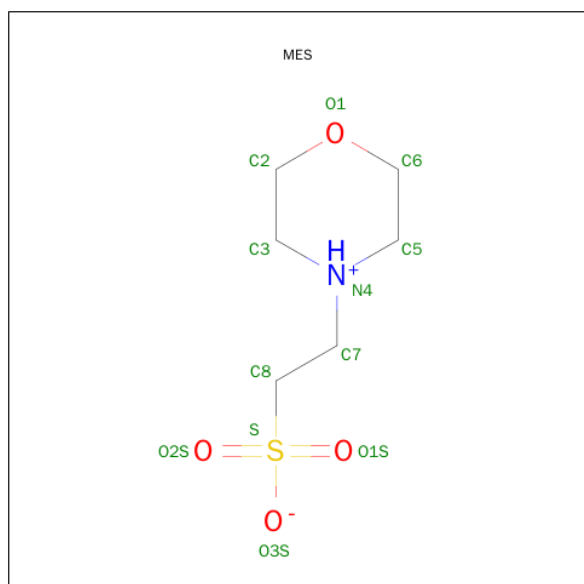


Mol	Chain	Residues	Atoms					ZeroOcc	AltConf
2	A	1	Total	C	N	O	S	0	0
			25	16	4	4	1		
2	B	1	Total	C	N	O	S	0	0
			25	16	4	4	1		
2	C	1	Total	C	N	O	S	0	0
			25	16	4	4	1		
2	D	1	Total	C	N	O	S	0	0
			25	16	4	4	1		

- Molecule 3 is CHLORIDE ION (three-letter code: CL) (formula: Cl).

Mol	Chain	Residues	Atoms		ZeroOcc	AltConf
3	B	1	Total	Cl	0	0
			1	1		
3	A	1	Total	Cl	0	0
			1	1		
3	D	1	Total	Cl	0	0
			1	1		
3	C	1	Total	Cl	0	0
			1	1		

- Molecule 4 is 2-(N-MORPHOLINO)-ETHANESULFONIC ACID (three-letter code: MES) (formula: C₆H₁₃NO₄S).



Mol	Chain	Residues	Atoms					ZeroOcc	AltConf
4	B	1	Total	C	N	O	S	0	0
			12	6	1	4	1		

Continued on next page...

Continued from previous page...

Mol	Chain	Residues	Atoms					ZeroOcc	AltConf
4	C	1	Total	C	N	O	S	0	0
			12	6	1	4	1		

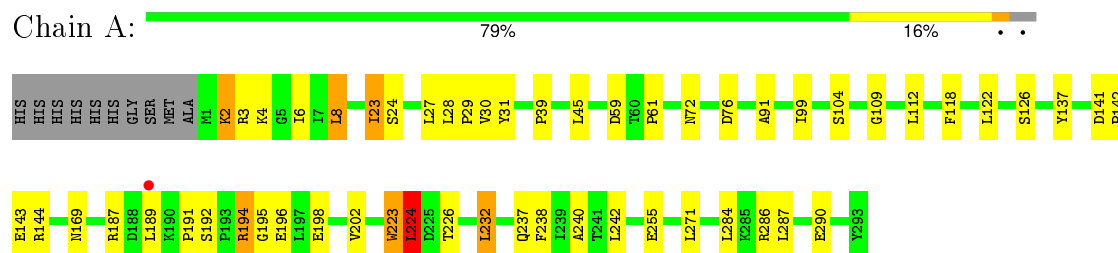
- Molecule 5 is water.

Mol	Chain	Residues	Atoms		ZeroOcc	AltConf
5	A	53	Total	O	0	0
			53	53		
5	B	48	Total	O	0	0
			48	48		
5	C	33	Total	O	0	0
			33	33		
5	D	26	Total	O	0	0
			26	26		

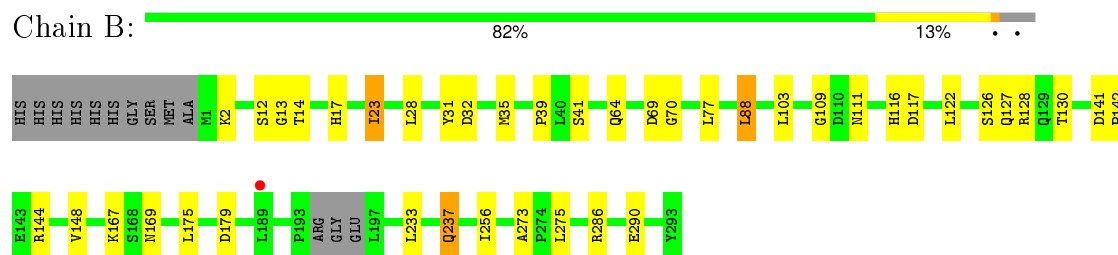
3 Residue-property plots

These plots are drawn for all protein, RNA and DNA chains in the entry. The first graphic for a chain summarises the proportions of errors displayed in the second graphic. The second graphic shows the sequence view annotated by issues in geometry and electron density. Residues are color-coded according to the number of geometric quality criteria for which they contain at least one outlier: green = 0, yellow = 1, orange = 2 and red = 3 or more. A red dot above a residue indicates a poor fit to the electron density ($RSRZ > 2$). Stretches of 2 or more consecutive residues without any outlier are shown as a green connector. Residues present in the sample, but not in the model, are shown in grey.

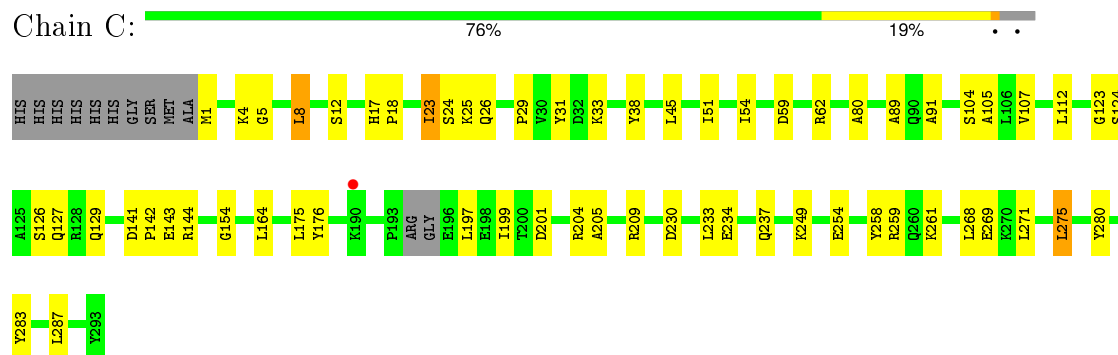
• Molecule 1: GLUCOSE-1-PHOSPHATE THYMIDYLTRANSFERASE



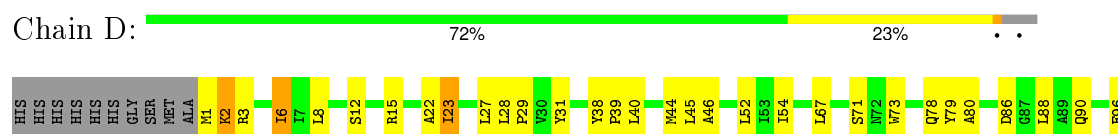
• Molecule 1: GLUCOSE-1-PHOSPHATE THYMIDYLTRANSFERASE

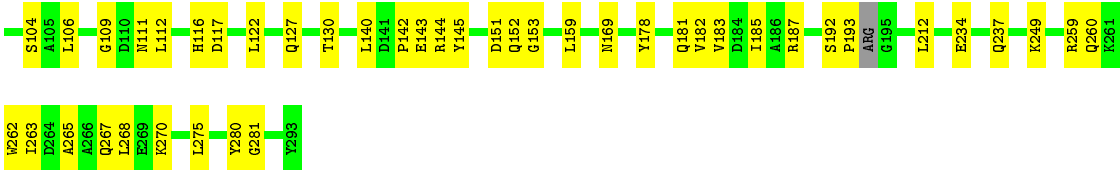


• Molecule 1: GLUCOSE-1-PHOSPHATE THYMIDYLTRANSFERASE



• Molecule 1: GLUCOSE-1-PHOSPHATE THYMIDYLTRANSFERASE





4 Data and refinement statistics

Property	Value	Source
Space group	C 1 2 1	Depositor
Cell constants a, b, c, α , β , γ	64.11Å 153.07Å 134.84Å 90.00° 92.57° 90.00°	Depositor
Resolution (Å)	29.11 – 2.50 29.11 – 2.49	Depositor EDS
% Data completeness (in resolution range)	98.8 (29.11-2.50) 98.8 (29.11-2.49)	Depositor EDS
R_{merge}	0.06	Depositor
R_{sym}	(Not available)	Depositor
$\langle I/\sigma(I) \rangle$ ¹	2.61 (at 2.48Å)	Xtriage
Refinement program	REFMAC 5.6.0117	Depositor
R, R_{free}	0.200 , 0.274 0.200 , 0.270	Depositor DCC
R_{free} test set	2229 reflections (5.29%)	DCC
Wilson B-factor (Å ²)	39.8	Xtriage
Anisotropy	0.405	Xtriage
Bulk solvent k_{sol} (e/Å ³), B_{sol} (Å ²)	0.31 , 25.8	EDS
Estimated twinning fraction	0.108 for h,-k,-l	Xtriage
L-test for twinning ²	$\langle L \rangle = 0.45$, $\langle L^2 \rangle = 0.27$	Xtriage
Outliers	1 of 44901 reflections (0.002%)	Xtriage
F_o, F_c correlation	0.94	EDS
Total number of atoms	9434	wwPDB-VP
Average B, all atoms (Å ²)	52.0	wwPDB-VP

Xtriage's analysis on translational NCS is as follows: *The largest off-origin peak in the Patterson function is 4.59% of the height of the origin peak. No significant pseudotranslation is detected.*

¹Intensities estimated from amplitudes.

²Theoretical values of $\langle |L| \rangle$, $\langle L^2 \rangle$ for acentric reflections are 0.5, 0.375 respectively for untwinned datasets, and 0.333, 0.2 for perfectly twinned datasets.

5 Model quality [i](#)

5.1 Standard geometry [i](#)

Bond lengths and bond angles in the following residue types are not validated in this section: KKT, MES, CL

The Z score for a bond length (or angle) is the number of standard deviations the observed value is removed from the expected value. A bond length (or angle) with $|Z| > 5$ is considered an outlier worth inspection. RMSZ is the root-mean-square of all Z scores of the bond lengths (or angles).

Mol	Chain	Bond lengths		Bond angles	
		RMSZ	$\# Z > 5$	RMSZ	$\# Z > 5$
1	A	0.66	1/2352 (0.0%)	0.80	1/3190 (0.0%)
1	B	0.68	0/2327	0.81	2/3156 (0.1%)
1	C	0.61	0/2336	0.76	1/3168 (0.0%)
1	D	0.60	2/2340 (0.1%)	0.73	0/3173
All	All	0.64	3/9355 (0.0%)	0.77	4/12687 (0.0%)

All (3) bond length outliers are listed below:

Mol	Chain	Res	Type	Atoms	Z	Observed(Å)	Ideal(Å)
1	D	73	TRP	CD2-CE2	5.64	1.48	1.41
1	D	262	TRP	CD2-CE2	5.23	1.47	1.41
1	A	223	TRP	CD2-CE2	5.12	1.47	1.41

All (4) bond angle outliers are listed below:

Mol	Chain	Res	Type	Atoms	Z	Observed(°)	Ideal(°)
1	A	224	LEU	CA-CB-CG	5.56	128.09	115.30
1	B	69	ASP	CB-CG-OD1	5.35	123.11	118.30
1	B	88	LEU	CA-CB-CG	5.33	127.57	115.30
1	C	275	LEU	CA-CB-CG	5.08	127.00	115.30

There are no chirality outliers.

There are no planarity outliers.

5.2 Too-close contacts [i](#)

In the following table, the Non-H and H(model) columns list the number of non-hydrogen atoms and hydrogen atoms in the chain respectively. The H(added) column lists the number of hydrogen atoms added and optimized by MolProbity. The Clashes column lists the number of clashes within

the asymmetric unit, whereas Symm-Clashes lists symmetry related clashes.

Mol	Chain	Non-H	H(model)	H(added)	Clashes	Symm-Clashes
1	A	2299	0	2292	46	0
1	B	2275	0	2269	28	0
1	C	2284	0	2275	50	0
1	D	2288	0	2278	57	0
2	A	25	0	22	2	0
2	B	25	0	22	1	0
2	C	25	0	22	6	0
2	D	25	0	22	2	0
3	A	1	0	0	0	0
3	B	1	0	0	1	0
3	C	1	0	0	0	0
3	D	1	0	0	0	0
4	B	12	0	13	0	0
4	C	12	0	13	2	0
5	A	53	0	0	0	0
5	B	48	0	0	1	0
5	C	33	0	0	0	0
5	D	26	0	0	1	0
All	All	9434	0	9228	158	0

The all-atom clashscore is defined as the number of clashes found per 1000 atoms (including hydrogen atoms). The all-atom clashscore for this structure is 9.

All (158) close contacts within the same asymmetric unit are listed below, sorted by their clash magnitude.

Atom-1	Atom-2	Interatomic distance (Å)	Clash overlap (Å)
1:A:237[A]:GLN:OE1	1:D:237[A]:GLN:OE1	1.74	1.05
1:D:96:GLU:HG3	1:D:183:VAL:HG11	1.57	0.86
3:B:1294:CL:CL	5:B:2017:HOH:O	2.34	0.82
1:A:24:SER:HB3	1:A:59:ASP:OD2	1.78	0.82
1:C:141:ASP:OD2	1:C:144:ARG:HD3	1.80	0.80
1:D:142:PRO:HD2	1:D:143:GLU:OE2	1.85	0.77
1:A:23:ILE:HD13	1:A:28:LEU:HD21	1.68	0.74
1:C:45:LEU:HD12	2:C:400:KKT:HAT3	1.71	0.73
1:D:23:ILE:HD11	1:D:27:LEU:CD1	2.18	0.72
1:B:23:ILE:HD13	1:C:23:ILE:HG21	1.72	0.72
1:A:226:THR:HB	1:A:232:LEU:HD22	1.72	0.71
1:A:23:ILE:HG23	1:D:23:ILE:HD12	1.70	0.71
1:B:23:ILE:HD13	1:C:23:ILE:CG2	2.23	0.69
1:D:267:GLN:HA	1:D:270:LYS:HD2	1.75	0.69

Continued on next page...

Continued from previous page...

Atom-1	Atom-2	Interatomic distance (Å)	Clash overlap (Å)
1:C:24:SER:HB2	1:C:59:ASP:CG	2.13	0.68
1:C:154:GLY:O	4:C:1294:MES:H32	1.92	0.68
1:C:230:ASP:O	1:C:234:GLU:HG3	1.92	0.68
1:B:23:ILE:CD1	1:C:23:ILE:HG21	2.24	0.68
1:D:23:ILE:HD11	1:D:27:LEU:HD12	1.76	0.68
1:A:23:ILE:CG2	1:D:23:ILE:HD12	2.27	0.64
1:C:45:LEU:HD11	2:C:400:KKT:HAI2	1.80	0.64
1:B:122:LEU:HD21	1:B:175:LEU:HD21	1.81	0.63
1:A:141:ASP:OD2	1:A:144:ARG:HD3	1.98	0.63
1:D:52:LEU:HD12	1:D:78:GLN:O	1.98	0.63
1:D:234:GLU:HA	1:D:237[A]:GLN:HE21	1.62	0.62
1:A:39:PRO:HG3	1:A:109:GLY:HA2	1.81	0.62
1:D:12:SER:O	1:D:15:ARG:HG3	1.99	0.62
1:C:89:ALA:HB3	1:C:197:LEU:HB3	1.80	0.62
1:C:23:ILE:HG13	1:C:24:SER:H	1.65	0.62
1:C:24:SER:HB2	1:C:59:ASP:OD1	2.00	0.62
1:B:103:LEU:HD23	1:B:179:ASP:HA	1.81	0.61
1:C:259:ARG:NH2	1:C:287:LEU:HD22	2.15	0.61
1:A:23:ILE:HD13	1:A:28:LEU:CD2	2.31	0.60
1:B:41:SER:HB3	1:B:256:ILE:CD1	2.31	0.60
1:A:191:PRO:HB3	1:A:195:GLY:HA2	1.85	0.59
1:A:8:LEU:CD1	1:A:91:ALA:HB2	2.33	0.59
1:C:45:LEU:CD1	2:C:400:KKT:HAI1	2.33	0.58
1:A:29:PRO:HD3	1:D:28:LEU:HD22	1.85	0.58
1:B:141:ASP:OD2	1:B:144:ARG:HD3	2.03	0.58
1:B:233:LEU:HD11	1:C:237[A]:GLN:HG3	1.86	0.57
1:C:249:LYS:HD2	1:C:283:TYR:CD2	2.39	0.57
1:C:275:LEU:HD23	1:C:280:TYR:HD2	1.69	0.57
1:D:23:ILE:HD11	1:D:27:LEU:HD13	1.85	0.57
1:B:237[A]:GLN:HG3	1:C:237[A]:GLN:OE1	2.03	0.57
1:C:45:LEU:HD11	2:C:400:KKT:CAI	2.35	0.56
1:D:38:TYR:CG	1:D:112:LEU:HD22	2.40	0.56
1:D:249:LYS:HE3	1:D:280:TYR:CD2	2.41	0.56
1:D:88:LEU:HG	5:D:2009:HOH:O	2.06	0.56
1:C:23:ILE:HG13	1:C:24:SER:N	2.20	0.55
1:C:107:VAL:CG1	1:C:175:LEU:HD13	2.37	0.55
1:C:45:LEU:CD1	2:C:400:KKT:CAI	2.85	0.54
1:B:23:ILE:HD12	1:B:28:LEU:HD23	1.90	0.54
1:D:67:LEU:HB2	1:D:79:TYR:OH	2.07	0.54
1:D:23:ILE:CD1	1:D:27:LEU:HD12	2.38	0.54
1:A:28:LEU:HD22	1:D:29:PRO:HD3	1.90	0.54

Continued on next page...

Continued from previous page...

Atom-1	Atom-2	Interatomic distance (Å)	Clash overlap (Å)
1:C:5:GLY:O	1:C:51:ILE:HA	2.07	0.54
1:A:6:ILE:HD11	1:A:99:ILE:HD11	1.90	0.54
1:B:237[B]:GLN:HG3	1:C:233:LEU:HD11	1.91	0.53
1:D:54:ILE:HA	1:D:80:ALA:O	2.07	0.53
1:A:142:PRO:HG3	1:A:169:ASN:HA	1.91	0.53
1:D:151:ASP:O	1:D:153:GLY:N	2.42	0.52
1:D:86:ASP:HB2	1:D:90:GLN:OE1	2.10	0.52
1:A:286:ARG:NH1	1:A:290:GLU:OE1	2.41	0.52
1:A:27:LEU:HD13	1:D:22:ALA:HB1	1.90	0.52
1:D:6:ILE:HB	1:D:106:LEU:HD13	1.92	0.52
1:C:205:ALA:O	1:C:209:ARG:HD2	2.09	0.52
1:C:12:SER:HB3	1:C:25:LYS:HD3	1.93	0.51
1:D:3:ARG:NH1	1:D:104:SER:O	2.43	0.51
1:A:30:VAL:HG11	1:A:112:LEU:HD21	1.93	0.51
1:A:255:GLU:HB2	1:A:287:LEU:HD11	1.92	0.51
1:A:2:LYS:HE2	1:A:3:ARG:H	1.74	0.51
1:A:61:PRO:HG3	1:B:64:GLN:HG2	1.92	0.51
1:C:201:ASP:OD1	1:C:204:ARG:NH1	2.35	0.51
1:D:38:TYR:CB	1:D:112:LEU:HD22	2.42	0.50
1:D:234:GLU:HA	1:D:237[A]:GLN:NE2	2.25	0.50
1:B:41:SER:HB2	2:B:400:KKT:HAT1	1.93	0.50
1:C:54:ILE:HA	1:C:80:ALA:O	2.11	0.50
1:A:237[A]:GLN:OE1	1:D:237[A]:GLN:HG2	2.11	0.50
1:A:237[A]:GLN:CD	1:D:237[A]:GLN:OE1	2.48	0.50
1:B:28:LEU:HD22	1:C:29:PRO:HG3	1.93	0.50
1:D:181:GLN:HG2	1:D:185:ILE:HD11	1.94	0.50
1:D:96:GLU:HG3	1:D:183:VAL:CG1	2.38	0.49
1:A:23:ILE:H	1:A:23:ILE:HD12	1.76	0.49
1:B:116:HIS:O	1:B:117:ASP:HB2	2.11	0.49
1:D:192:SER:HB2	1:D:193:PRO:HD2	1.95	0.49
1:A:8:LEU:HD12	1:A:91:ALA:HB2	1.95	0.49
1:A:237[A]:GLN:HG2	1:D:237[A]:GLN:OE1	2.13	0.48
1:A:8:LEU:HD11	1:A:91:ALA:HB2	1.94	0.48
1:C:1:MET:HB2	1:C:129:GLN:HE22	1.79	0.48
1:D:40:LEU:O	1:D:44:MET:HG3	2.14	0.48
1:D:159:LEU:HD11	1:D:212:LEU:HD22	1.94	0.48
1:D:1:MET:HG2	1:D:2:LYS:H	1.78	0.48
1:B:122:LEU:CD2	1:B:175:LEU:HD21	2.43	0.48
1:A:45:LEU:HD12	2:A:400:KKT:HAK2	1.95	0.48
1:A:238:PHE:CE2	1:A:242:LEU:HD11	2.49	0.48
1:A:237[A]:GLN:OE1	1:D:237[A]:GLN:CD	2.49	0.48

Continued on next page...

Continued from previous page...

Atom-1	Atom-2	Interatomic distance (Å)	Clash overlap (Å)
1:C:105:ALA:HA	1:C:176:TYR:O	2.13	0.48
1:A:112:LEU:HD22	1:A:224:LEU:HD12	1.96	0.47
1:C:107:VAL:CG1	1:C:175:LEU:CD1	2.91	0.47
1:B:273:ALA:C	1:B:275:LEU:H	2.17	0.47
1:C:45:LEU:HD12	2:C:400:KKT:HAI1	1.96	0.47
1:B:142:PRO:HG3	1:B:169:ASN:HA	1.95	0.47
1:D:275:LEU:O	1:D:281:GLY:HA3	2.15	0.47
1:B:23:ILE:HG21	1:C:23:ILE:HB	1.95	0.47
1:D:39:PRO:HG3	1:D:109:GLY:HA2	1.95	0.47
1:A:72:ASN:O	1:A:271:LEU:HD11	2.14	0.47
1:B:237[A]:GLN:CG	1:C:237[A]:GLN:OE1	2.62	0.47
1:B:14:THR:HA	1:B:17:HIS:CD2	2.49	0.47
1:A:189:LEU:HD11	1:A:202:VAL:CG2	2.46	0.46
1:A:137:TYR:CD2	1:A:223:TRP:HE3	2.34	0.46
1:D:263:ILE:HD11	1:D:268:LEU:HD23	1.97	0.46
1:D:142:PRO:HG3	1:D:169:ASN:HA	1.98	0.45
1:A:28:LEU:HD22	1:D:29:PRO:CD	2.45	0.45
2:A:400:KKT:OAL	2:A:400:KKT:HAY	2.17	0.45
1:C:258:TYR:CG	1:C:268:LEU:HD22	2.52	0.45
1:A:118:PHE:CE2	1:A:122:LEU:HD11	2.52	0.45
1:B:286:ARG:NH1	1:B:290:GLU:OE1	2.41	0.44
1:C:33:LYS:HG3	1:C:38:TYR:CE1	2.52	0.44
1:B:167:LYS:HD3	1:B:167:LYS:HA	1.63	0.44
1:C:142:PRO:HD2	1:C:143:GLU:OE2	2.18	0.44
1:C:259:ARG:NH2	1:C:287:LEU:CD2	2.80	0.44
1:B:23:ILE:HD13	1:C:23:ILE:HG22	1.98	0.44
1:A:23:ILE:CD1	1:A:28:LEU:HD21	2.43	0.44
1:D:44:MET:O	1:D:260:GLN:NE2	2.51	0.44
1:A:72:ASN:HB3	1:A:271:LEU:HD21	1.98	0.44
1:D:259:ARG:HD2	2:D:400:KKT:HAY	1.99	0.44
1:A:192:SER:HB2	1:A:196:GLU:O	2.18	0.44
1:C:154:GLY:O	4:C:1294:MES:H72	2.18	0.43
1:C:4:LYS:O	1:C:104:SER:HA	2.19	0.43
1:D:2:LYS:NZ	1:D:2:LYS:HB3	2.33	0.43
1:D:8:LEU:HD21	1:D:88:LEU:HA	2.00	0.43
1:C:107:VAL:HG13	1:C:175:LEU:HD12	2.00	0.43
1:D:96:GLU:CD	1:D:187:ARG:HH22	2.21	0.43
1:A:45:LEU:HD23	1:A:45:LEU:HA	1.61	0.43
1:D:46:ALA:HB2	1:D:122:LEU:HB3	2.00	0.43
1:C:45:LEU:HA	1:C:45:LEU:HD23	1.80	0.43
1:C:107:VAL:HG13	1:C:175:LEU:CD1	2.49	0.43

Continued on next page...

Continued from previous page...

Atom-1	Atom-2	Interatomic distance (Å)	Clash overlap (Å)
1:D:45:LEU:HA	1:D:45:LEU:HD12	1.73	0.42
1:C:249:LYS:HD2	1:C:283:TYR:CE2	2.55	0.42
1:C:254:GLU:HG2	1:C:271:LEU:HD13	2.02	0.42
1:D:116:HIS:O	1:D:117:ASP:HB2	2.20	0.42
1:D:45:LEU:HD21	2:D:400:KKT:OAC	2.19	0.42
1:C:25:LYS:HE2	1:C:26:GLN:NE2	2.34	0.41
1:D:178:TYR:HB3	1:D:182:VAL:HB	2.02	0.41
1:B:39:PRO:HG3	1:B:109:GLY:HA2	2.02	0.41
1:B:70:GLY:HA3	1:B:77:LEU:HG	2.01	0.41
1:D:1:MET:HG2	1:D:2:LYS:N	2.35	0.41
1:A:237[A]:GLN:OE1	1:D:237[A]:GLN:CG	2.68	0.41
1:A:284:LEU:HA	1:A:287:LEU:HD12	2.03	0.41
1:A:31:TYR:CD1	1:A:240:ALA:HB2	2.56	0.41
1:A:194:ARG:HE	1:A:194:ARG:H	1.68	0.41
1:B:32:ASP:O	1:C:18:PRO:HD2	2.21	0.41
1:A:237[A]:GLN:CG	1:D:237[A]:GLN:OE1	2.69	0.41
1:B:35:MET:O	1:B:39:PRO:HD2	2.21	0.41
1:D:144:ARG:NH1	1:D:145:TYR:OH	2.54	0.41
1:A:4:LYS:O	1:A:104:SER:HA	2.21	0.41
1:C:8:LEU:HD22	1:C:91:ALA:HB2	2.03	0.40
1:D:23:ILE:HD13	1:D:27:LEU:HB2	2.03	0.40

There are no symmetry-related clashes.

5.3 Torsion angles [i](#)

5.3.1 Protein backbone [i](#)

In the following table, the Percentiles column shows the percent Ramachandran outliers of the chain as a percentile score with respect to all X-ray entries followed by that with respect to entries of similar resolution.

The Analysed column shows the number of residues for which the backbone conformation was analysed, and the total number of residues.

Mol	Chain	Analysed	Favoured	Allowed	Outliers	Percentiles	
1	A	292/303 (96%)	279 (96%)	12 (4%)	1 (0%)	46	68
1	B	287/303 (95%)	270 (94%)	14 (5%)	3 (1%)	19	34
1	C	288/303 (95%)	273 (95%)	12 (4%)	3 (1%)	19	34
1	D	289/303 (95%)	271 (94%)	14 (5%)	4 (1%)	14	24

Continued on next page...

Continued from previous page...

Mol	Chain	Analysed	Favoured	Allowed	Outliers	Percentiles	
All	All	1156/1212 (95%)	1093 (95%)	52 (4%)	11 (1%)	19	34

All (11) Ramachandran outliers are listed below:

Mol	Chain	Res	Type
1	D	265	ALA
1	B	128	ARG
1	D	31	TYR
1	D	152	GLN
1	A	143	GLU
1	B	13	GLY
1	D	71	SER
1	C	31	TYR
1	B	31	TYR
1	C	23	ILE
1	C	123	GLY

5.3.2 Protein sidechains ⓘ

In the following table, the Percentiles column shows the percent sidechain outliers of the chain as a percentile score with respect to all X-ray entries followed by that with respect to entries of similar resolution.

The Analysed column shows the number of residues for which the sidechain conformation was analysed, and the total number of residues.

Mol	Chain	Analysed	Rotameric	Outliers	Percentiles	
1	A	241/248 (97%)	231 (96%)	10 (4%)	37	63
1	B	239/248 (96%)	228 (95%)	11 (5%)	33	57
1	C	240/248 (97%)	229 (95%)	11 (5%)	33	57
1	D	240/248 (97%)	233 (97%)	7 (3%)	50	77
All	All	960/992 (97%)	921 (96%)	39 (4%)	38	63

All (39) residues with a non-rotameric sidechain are listed below:

Mol	Chain	Res	Type
1	A	2	LYS
1	A	8	LEU
1	A	23	ILE
1	A	76	ASP

Continued on next page...

Continued from previous page...

Mol	Chain	Res	Type
1	A	126	SER
1	A	187	ARG
1	A	194	ARG
1	A	198	GLU
1	A	224	LEU
1	A	232	LEU
1	B	2	LYS
1	B	12	SER
1	B	23	ILE
1	B	88	LEU
1	B	111	ASN
1	B	126	SER
1	B	127	GLN
1	B	130	THR
1	B	148	VAL
1	B	237[A]	GLN
1	B	237[B]	GLN
1	C	8	LEU
1	C	17	HIS
1	C	62	ARG
1	C	112	LEU
1	C	124	SER
1	C	126	SER
1	C	127	GLN
1	C	164	LEU
1	C	199	ILE
1	C	261	LYS
1	C	269	GLU
1	D	2	LYS
1	D	6	ILE
1	D	23	ILE
1	D	111	ASN
1	D	127	GLN
1	D	130	THR
1	D	140	LEU

Some sidechains can be flipped to improve hydrogen bonding and reduce clashes. All (7) such sidechains are listed below:

Mol	Chain	Res	Type
1	A	101	ASN
1	B	101	ASN
1	B	229	HIS

Continued on next page...

Continued from previous page...

Mol	Chain	Res	Type
1	C	101	ASN
1	C	127	GLN
1	C	129	GLN
1	D	181	GLN

5.3.3 RNA [i](#)

There are no RNA molecules in this entry.

5.4 Non-standard residues in protein, DNA, RNA chains [i](#)

There are no non-standard protein/DNA/RNA residues in this entry.

5.5 Carbohydrates [i](#)

There are no carbohydrates in this entry.

5.6 Ligand geometry [i](#)

Of 10 ligands modelled in this entry, 4 are monoatomic - leaving 6 for Mogul analysis.

In the following table, the Counts columns list the number of bonds (or angles) for which Mogul statistics could be retrieved, the number of bonds (or angles) that are observed in the model and the number of bonds (or angles) that are defined in the chemical component dictionary. The Link column lists molecule types, if any, to which the group is linked. The Z score for a bond length (or angle) is the number of standard deviations the observed value is removed from the expected value. A bond length (or angle) with $|Z| > 2$ is considered an outlier worth inspection. RMSZ is the root-mean-square of all Z scores of the bond lengths (or angles).

Mol	Type	Chain	Res	Link	Bond lengths			Bond angles		
					Counts	RMSZ	$\# Z > 2$	Counts	RMSZ	$\# Z > 2$
2	KKT	A	400	-	20,26,26	3.00	6 (30%)	19,37,37	3.46	7 (36%)
4	MES	B	1295	-	11,12,12	0.74	0	14,16,16	1.53	2 (14%)
2	KKT	B	400	-	20,26,26	3.54	5 (25%)	19,37,37	3.72	7 (36%)
4	MES	C	1294	-	11,12,12	0.99	0	14,16,16	2.31	5 (35%)
2	KKT	C	400	-	20,26,26	2.83	6 (30%)	19,37,37	3.14	7 (36%)
2	KKT	D	400	-	20,26,26	3.42	6 (30%)	19,37,37	3.25	8 (42%)

In the following table, the Chirals column lists the number of chiral outliers, the number of chiral

centers analysed, the number of these observed in the model and the number defined in the chemical component dictionary. Similar counts are reported in the Torsion and Rings columns. '-' means no outliers of that kind were identified.

Mol	Type	Chain	Res	Link	Chirals	Torsions	Rings
2	KKT	A	400	-	-	0/18/19/19	0/2/2/2
4	MES	B	1295	-	-	0/6/14/14	0/1/1/1
2	KKT	B	400	-	-	0/18/19/19	0/2/2/2
4	MES	C	1294	-	-	0/6/14/14	0/1/1/1
2	KKT	C	400	-	-	0/18/19/19	0/2/2/2
2	KKT	D	400	-	-	0/18/19/19	0/2/2/2

All (23) bond length outliers are listed below:

Mol	Chain	Res	Type	Atoms	Z	Observed(Å)	Ideal(Å)
2	D	400	KKT	SAH-NAG	-6.64	1.51	1.66
2	B	400	KKT	CAU-CAV	-5.00	1.39	1.51
2	D	400	KKT	CAU-CAV	-4.89	1.39	1.51
2	A	400	KKT	CAU-CAV	-4.51	1.40	1.51
2	C	400	KKT	CAU-CAV	-4.16	1.41	1.51
2	A	400	KKT	SAH-NAG	-3.37	1.58	1.66
2	C	400	KKT	SAH-NAG	-3.29	1.59	1.66
2	A	400	KKT	CAE-NAD	3.06	1.38	1.33
2	D	400	KKT	CAE-NAD	3.07	1.38	1.33
2	C	400	KKT	CAI-SAH	3.30	1.82	1.78
2	C	400	KKT	CAE-NAD	3.37	1.39	1.33
2	B	400	KKT	CAI-SAH	3.49	1.82	1.78
2	B	400	KKT	CAE-NAD	4.68	1.41	1.33
2	D	400	KKT	CAI-SAH	4.80	1.83	1.78
2	A	400	KKT	CAI-SAH	5.82	1.85	1.78
2	D	400	KKT	OAC-SAH	6.41	1.50	1.43
2	C	400	KKT	OAQ-SAH	7.04	1.51	1.43
2	A	400	KKT	OAC-SAH	7.11	1.51	1.43
2	C	400	KKT	OAC-SAH	7.11	1.51	1.43
2	A	400	KKT	OAQ-SAH	7.12	1.51	1.43
2	B	400	KKT	OAQ-SAH	9.26	1.54	1.43
2	D	400	KKT	OAQ-SAH	9.45	1.54	1.43
2	B	400	KKT	OAC-SAH	9.48	1.54	1.43

All (36) bond angle outliers are listed below:

Mol	Chain	Res	Type	Atoms	Z	Observed(°)	Ideal(°)
2	B	400	KKT	OAC-SAH-OAQ	-10.63	107.59	118.92
2	A	400	KKT	OAC-SAH-OAQ	-10.38	107.85	118.92

Continued on next page...

Continued from previous page...

Mol	Chain	Res	Type	Atoms	Z	Observed(°)	Ideal(°)
2	D	400	KKT	OAC-SAH-OAQ	-8.46	109.90	118.92
2	C	400	KKT	OAC-SAH-OAQ	-7.15	111.30	118.92
2	C	400	KKT	CAF-CAO-NAP	-4.64	115.03	124.49
2	B	400	KKT	CAF-CAO-NAP	-4.57	115.16	124.49
2	D	400	KKT	CAF-CAO-NAP	-4.24	115.84	124.49
2	A	400	KKT	CAF-CAO-NAP	-3.94	116.46	124.49
2	A	400	KKT	CAF-CAE-NAD	-3.79	117.64	123.46
2	B	400	KKT	CAF-CAE-NAD	-3.51	118.06	123.46
2	D	400	KKT	CAF-CAE-NAD	-3.27	118.42	123.46
2	C	400	KKT	CAF-CAE-NAD	-3.06	118.75	123.46
4	C	1294	MES	O3S-S-O1S	-2.89	104.88	111.61
4	C	1294	MES	O2S-S-O1S	-2.06	105.97	113.48
2	A	400	KKT	CAB-NAG-CAF	-2.03	115.17	117.12
4	B	1295	MES	C6-O1-C2	2.09	116.93	109.89
4	C	1294	MES	C6-C5-N4	2.13	113.36	110.12
2	D	400	KKT	CAB-NAG-CAF	2.45	119.48	117.12
2	D	400	KKT	OAQ-SAH-CAI	2.83	112.39	107.96
2	C	400	KKT	OAQ-SAH-CAI	3.05	112.73	107.96
2	D	400	KKT	NAP-CAO-NAN	3.37	123.15	120.66
2	C	400	KKT	CAE-NAD-CAM	3.53	118.30	115.25
2	B	400	KKT	CAE-NAD-CAM	3.78	118.51	115.25
4	B	1295	MES	O1S-S-C8	3.82	110.16	106.91
2	A	400	KKT	OAC-SAH-CAI	4.39	114.81	107.96
2	B	400	KKT	NAP-CAO-NAN	4.69	124.12	120.66
4	C	1294	MES	O1S-S-C8	4.71	110.92	106.91
2	D	400	KKT	CAE-CAF-CAO	4.78	119.15	114.57
4	C	1294	MES	C2-C3-N4	5.25	118.09	110.12
2	A	400	KKT	CAE-NAD-CAM	5.40	119.91	115.25
2	B	400	KKT	CAE-CAF-CAO	5.42	119.76	114.57
2	A	400	KKT	CAE-CAF-CAO	5.62	119.96	114.57
2	C	400	KKT	NAP-CAO-NAN	5.81	124.94	120.66
2	B	400	KKT	OAC-SAH-CAI	6.60	118.27	107.96
2	C	400	KKT	CAE-CAF-CAO	6.70	120.99	114.57
2	D	400	KKT	CAE-NAD-CAM	6.95	121.25	115.25

There are no chirality outliers.

There are no torsion outliers.

There are no ring outliers.

5 monomers are involved in 13 short contacts:

Mol	Chain	Res	Type	Clashes	Symm-Clashes
2	A	400	KKT	2	0
2	B	400	KKT	1	0
4	C	1294	MES	2	0
2	C	400	KKT	6	0
2	D	400	KKT	2	0

5.7 Other polymers [i](#)

There are no such residues in this entry.

5.8 Polymer linkage issues [i](#)

There are no chain breaks in this entry.

6 Fit of model and data ⓘ

6.1 Protein, DNA and RNA chains ⓘ

In the following table, the column labelled ‘#RSRZ> 2’ contains the number (and percentage) of RSRZ outliers, followed by percent RSRZ outliers for the chain as percentile scores relative to all X-ray entries and entries of similar resolution. The OWAB column contains the minimum, median, 95th percentile and maximum values of the occupancy-weighted average B-factor per residue. The column labelled ‘Q< 0.9’ lists the number of (and percentage) of residues with an average occupancy less than 0.9.

Mol	Chain	Analysed	<RSRZ>	#RSRZ>2			OWAB(Å ²)	Q<0.9
1	A	293/303 (96%)	-0.60	1 (0%)	94	95	28, 47, 76, 103	0
1	B	290/303 (95%)	-0.54	1 (0%)	94	95	24, 44, 77, 113	0
1	C	291/303 (96%)	-0.52	1 (0%)	94	95	31, 51, 77, 111	0
1	D	292/303 (96%)	-0.32	0	100	100	38, 61, 88, 109	1 (0%)
All	All	1166/1212 (96%)	-0.50	3 (0%)	94	95	24, 51, 81, 113	1 (0%)

All (3) RSRZ outliers are listed below:

Mol	Chain	Res	Type	RSRZ
1	B	189	LEU	2.9
1	A	189	LEU	2.3
1	C	190	LYS	2.2

6.2 Non-standard residues in protein, DNA, RNA chains ⓘ

There are no non-standard protein/DNA/RNA residues in this entry.

6.3 Carbohydrates ⓘ

There are no carbohydrates in this entry.

6.4 Ligands ⓘ

In the following table, the Atoms column lists the number of modelled atoms in the group and the number defined in the chemical component dictionary. LLDF column lists the quality of electron density of the group with respect to its neighbouring residues in protein, DNA or RNA chains. The B-factors column lists the minimum, median, 95th percentile and maximum values of B factors of atoms in the group. The column labelled ‘Q< 0.9’ lists the number of atoms with occupancy less than 0.9.

Mol	Type	Chain	Res	Atoms	RSCC	RSR	LLDF	B-factors(\AA^2)	Q<0.9
3	CL	B	1294	1/1	0.98	0.16	6.80	32,32,32,32	0
4	MES	B	1295	12/12	0.95	0.15	1.47	71,76,84,90	0
3	CL	C	1295	1/1	0.99	0.15	1.38	34,34,34,34	0
2	KKT	B	400	25/25	0.98	0.12	1.08	28,34,38,39	0
2	KKT	A	400	25/25	0.98	0.12	0.89	28,37,46,51	0
4	MES	C	1294	12/12	0.93	0.17	0.72	59,66,75,82	0
3	CL	D	1294	1/1	0.99	0.10	-0.01	44,44,44,44	0
2	KKT	D	400	25/25	0.98	0.12	-0.20	43,50,70,72	0
2	KKT	C	400	25/25	0.99	0.10	-0.23	31,41,54,58	0
3	CL	A	1294	1/1	0.99	0.14	-	35,35,35,35	0

6.5 Other polymers [i](#)

There are no such residues in this entry.