



Full wwPDB X-ray Structure Validation Report ⓘ

Jul 31, 2016 – 06:05 AM EDT

PDB ID : 5B8I
Title : Crystal structure of Calcineurin A and Calcineurin B in complex with FKBP12 and FK506 from *Coccidioides immitis* RS
Authors : Seattle Structural Genomics Center for Infectious Disease (SSGCID); Fox III, D.; Dranow, D.M.; Lorimer, D.D.; Edwards, T.E.
Deposited on : 2015-05-03
Resolution : 1.85 Å(reported)

This is a Full wwPDB X-ray Structure Validation Report for a publicly released PDB entry.

We welcome your comments at validation@mail.wwpdb.org

A user guide is available at

<http://wwpdb.org/validation/2016/XrayValidationReportHelp>

with specific help available everywhere you see the ⓘ symbol.

The following versions of software and data (see [references ⓘ](#)) were used in the production of this report:

MolProbity : 4.02b-467
Mogul : 1.7.1 (RC1), CSD as537be (2016)
Xtriage (Phenix) : 1.9-1692
EDS : rb-20027939
Percentile statistics : 20151230.v01 (using entries in the PDB archive December 30th 2015)
Refmac : 5.8.0135
CCP4 : 6.5.0
Ideal geometry (proteins) : Engh & Huber (2001)
Ideal geometry (DNA, RNA) : Parkinson et al. (1996)
Validation Pipeline (wwPDB-VP) : rb-20027939

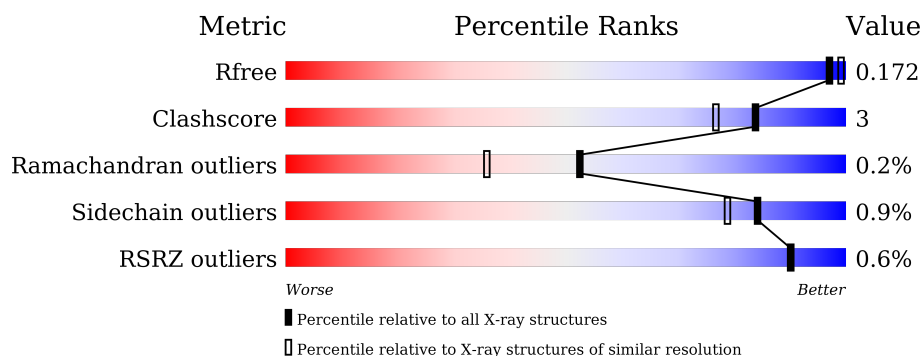
1 Overall quality at a glance

The following experimental techniques were used to determine the structure:

X-RAY DIFFRACTION


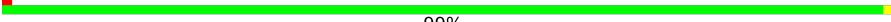

The reported resolution of this entry is 1.85 Å.

Percentile scores (ranging between 0-100) for global validation metrics of the entry are shown in the following graphic. The table shows the number of entries on which the scores are based.



Metric	Whole archive (#Entries)	Similar resolution (#Entries, resolution range(Å))
R_{free}	91344	1745 (1.86-1.86)
Clashscore	102246	1898 (1.86-1.86)
Ramachandran outliers	100387	1875 (1.86-1.86)
Sidechain outliers	100360	1875 (1.86-1.86)
RSRZ outliers	91569	1747 (1.86-1.86)

The table below summarises the geometric issues observed across the polymeric chains and their fit to the electron density. The red, orange, yellow and green segments on the lower bar indicate the fraction of residues that contain outliers for ≥ 3 , 2, 1 and 0 types of geometric quality criteria. A grey segment represents the fraction of residues that are not modelled. The numeric value for each fraction is indicated below the corresponding segment, with a dot representing fractions $\leq 5\%$. The upper red bar (where present) indicates the fraction of residues that have poor fit to the electron density. The numeric value is given above the bar.

Mol	Chain	Length	Quality of chain
1	A	390	 86% 5% • 8%
2	B	171	 99% • •
3	C	130	 86% 5% • 8%

The following table lists non-polymeric compounds, carbohydrate monomers and non-standard residues in protein, DNA, RNA chains that are outliers for geometric or electron-density-fit criteria:

Mol	Type	Chain	Res	Chirality	Geometry	Clashes	Electron density
6	MES	A	403	-	-	X	X
7	EDO	A	405	-	-	-	X
7	EDO	A	406	-	-	-	X
7	EDO	A	408	-	-	-	X
7	EDO	A	409	-	-	-	X
7	EDO	A	410	-	-	-	X
7	EDO	B	206	-	-	-	X
7	EDO	C	202	-	-	-	X
7	EDO	C	204	-	-	-	X

2 Entry composition

There are 10 unique types of molecules in this entry. The entry contains 6073 atoms, of which 0 are hydrogens and 0 are deuteriums.

In the tables below, the ZeroOcc column contains the number of atoms modelled with zero occupancy, the AltConf column contains the number of residues with at least one atom in alternate conformation and the Trace column contains the number of residues modelled with at most 2 atoms.

- Molecule 1 is a protein called Serine/threonine-protein phosphatase.

Mol	Chain	Residues	Atoms					ZeroOcc	AltConf	Trace
1	A	359	Total	C	N	O	S	0	12	0
			2974	1933	487	532	22			

There are 21 discrepancies between the modelled and reference sequences:

Chain	Residue	Modelled	Actual	Comment	Reference
A	1	MET	-	initiating methionine	UNP J3K9C5
A	2	GLY	-	expression tag	UNP J3K9C5
A	3	SER	-	expression tag	UNP J3K9C5
A	4	SER	-	expression tag	UNP J3K9C5
A	5	HIS	-	expression tag	UNP J3K9C5
A	6	HIS	-	expression tag	UNP J3K9C5
A	7	HIS	-	expression tag	UNP J3K9C5
A	8	HIS	-	expression tag	UNP J3K9C5
A	9	HIS	-	expression tag	UNP J3K9C5
A	10	HIS	-	expression tag	UNP J3K9C5
A	11	SER	-	expression tag	UNP J3K9C5
A	12	SER	-	expression tag	UNP J3K9C5
A	13	GLY	-	expression tag	UNP J3K9C5
A	14	GLU	-	expression tag	UNP J3K9C5
A	15	ASN	-	expression tag	UNP J3K9C5
A	16	LEU	-	expression tag	UNP J3K9C5
A	17	TYR	-	expression tag	UNP J3K9C5
A	18	PHE	-	expression tag	UNP J3K9C5
A	19	GLN	-	expression tag	UNP J3K9C5
A	20	GLY	-	expression tag	UNP J3K9C5
A	21	SER	-	expression tag	UNP J3K9C5

- Molecule 2 is a protein called Calcineurin subunit B, variant.

Mol	Chain	Residues	Atoms					ZeroOcc	AltConf	Trace
2	B	171	Total	C	N	O	S	0	5	0
			1374	863	226	275	10			

There is a discrepancy between the modelled and reference sequences:

Chain	Residue	Modelled	Actual	Comment	Reference
B	1	MET	-	initiating methionine	UNP I9NKL8

- Molecule 3 is a protein called Peptidyl-prolyl cis-trans isomerase.

Mol	Chain	Residues	Atoms					ZeroOcc	AltConf	Trace
3	C	119	Total	C	N	O	S	0	1	0
			912	579	155	174	4			

There are 11 discrepancies between the modelled and reference sequences:

Chain	Residue	Modelled	Actual	Comment	Reference
C	0	MET	-	initiating methionine	UNP J3K1B6
C	1	TRP	-	expression tag	UNP J3K1B6
C	2	SER	-	expression tag	UNP J3K1B6
C	3	HIS	-	expression tag	UNP J3K1B6
C	4	PRO	-	expression tag	UNP J3K1B6
C	5	GLN	-	expression tag	UNP J3K1B6
C	6	PHE	-	expression tag	UNP J3K1B6
C	7	GLU	-	expression tag	UNP J3K1B6
C	8	LYS	-	expression tag	UNP J3K1B6
C	9	GLY	-	expression tag	UNP J3K1B6
C	10	SER	-	expression tag	UNP J3K1B6

- Molecule 4 is ZINC ION (three-letter code: ZN) (formula: Zn).

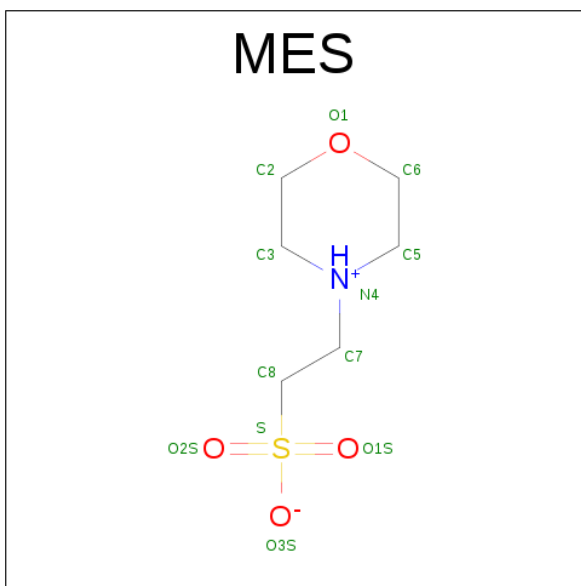
Mol	Chain	Residues	Atoms		ZeroOcc	AltConf
4	A	1	Total	Zn	0	0
			1	1		

- Molecule 5 is FE (III) ION (three-letter code: FE) (formula: Fe).

Mol	Chain	Residues	Atoms		ZeroOcc	AltConf
5	A	1	Total	Fe	0	0
			1	1		

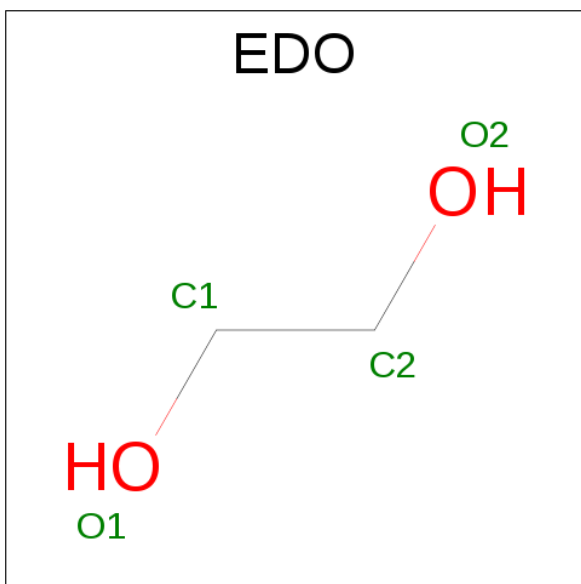
- Molecule 6 is 2-(N-MORPHOLINO)-ETHANESULFONIC ACID (three-letter code: MES)

(formula: $C_6H_{13}NO_4S$).



Mol	Chain	Residues	Atoms					ZeroOcc	AltConf
6	A	1	Total	C	N	O	S	0	0
			7	2	1	3	1		
6	A	1	Total	C	N	O	S	0	0
			12	6	1	4	1		

- Molecule 7 is 1,2-ETHANEDIOL (three-letter code: EDO) (formula: $C_2H_6O_2$).



Mol	Chain	Residues	Atoms			ZeroOcc	AltConf
7	A	1	Total	C	O	0	0
			4	2	2		

Continued on next page...

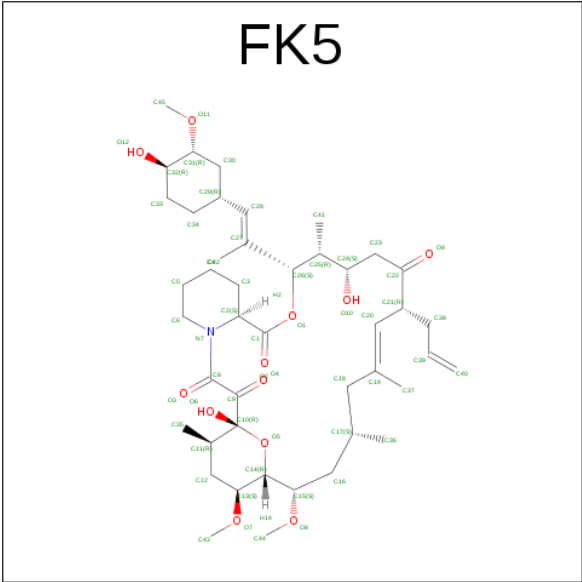
Continued from previous page...

Mol	Chain	Residues	Atoms	ZeroOcc	AltConf
7	A	1	Total C O 4 2 2	0	0
7	A	1	Total C O 4 2 2	0	0
7	A	1	Total C O 4 2 2	0	0
7	A	1	Total C O 4 2 2	0	0
7	A	1	Total C O 4 2 2	0	0
7	B	1	Total C O 4 2 2	0	0
7	B	1	Total C O 4 2 2	0	0
7	C	1	Total C O 4 2 2	0	0
7	C	1	Total C O 4 2 2	0	0
7	C	1	Total C O 4 2 2	0	0

- Molecule 8 is CALCIUM ION (three-letter code: CA) (formula: Ca).

Mol	Chain	Residues	Atoms	ZeroOcc	AltConf
8	B	4	Total Ca 4 4	0	0

- Molecule 9 is 8-DEETHYL-8-[BUT-3-ENYL]-ASCOMYCIN (three-letter code: FK5) (formula: C₄₄H₆₉NO₁₂).



Mol	Chain	Residues	Atoms				ZeroOcc	AltConf
9	C	1	Total	C	N	O	0	0
			57	44	1	12		

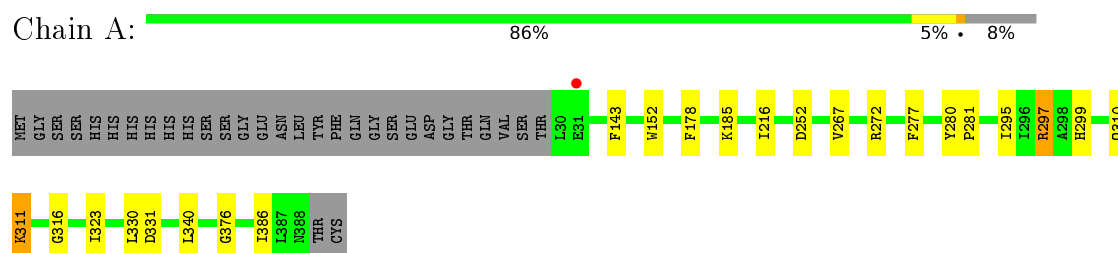
- Molecule 10 is water.

Mol	Chain	Residues	Atoms		ZeroOcc	AltConf
10	A	424	Total	O	0	0
			424	424		
10	B	174	Total	O	0	0
			174	174		
10	C	89	Total	O	0	0
			89	89		

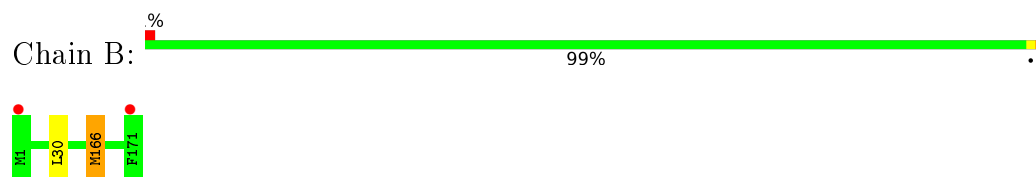
3 Residue-property plots

These plots are drawn for all protein, RNA and DNA chains in the entry. The first graphic for a chain summarises the proportions of errors displayed in the second graphic. The second graphic shows the sequence view annotated by issues in geometry and electron density. Residues are color-coded according to the number of geometric quality criteria for which they contain at least one outlier: green = 0, yellow = 1, orange = 2 and red = 3 or more. A red dot above a residue indicates a poor fit to the electron density ($RSRZ > 2$). Stretches of 2 or more consecutive residues without any outlier are shown as a green connector. Residues present in the sample, but not in the model, are shown in grey.

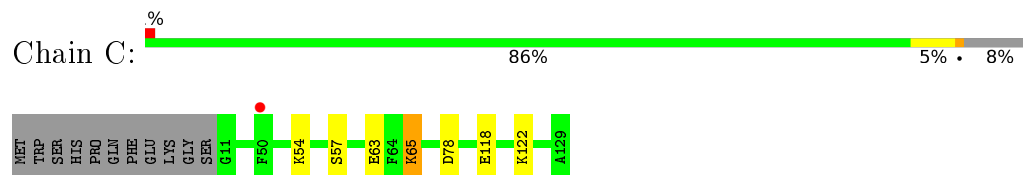
- Molecule 1: Serine/threonine-protein phosphatase



- Molecule 2: Calcineurin subunit B, variant



- Molecule 3: Peptidyl-prolyl cis-trans isomerase



4 Data and refinement statistics

Property	Value	Source
Space group	P 21 21 2	Depositor
Cell constants a, b, c, α , β , γ	94.67Å 154.63Å 64.75Å 90.00° 90.00° 90.00°	Depositor
Resolution (Å)	45.27 – 1.85 47.33 – 1.85	Depositor EDS
% Data completeness (in resolution range)	100.0 (45.27-1.85) 100.0 (47.33-1.85)	Depositor EDS
R_{merge}	0.09	Depositor
R_{sym}	(Not available)	Depositor
$\langle I/\sigma(I) \rangle$ ¹	3.99 (at 1.86Å)	Xtriage
Refinement program	PHENIX (PHENIX.REFINE: DEV_1932)	Depositor
R, R_{free}	0.145 , 0.172 0.145 , 0.172	Depositor DCC
R_{free} test set	4017 reflections (4.91%)	DCC
Wilson B-factor (Å ²)	19.5	Xtriage
Anisotropy	0.366	Xtriage
Bulk solvent k_{sol} (e/Å ³), B_{sol} (Å ²)	0.35 , 56.8	EDS
L-test for twinning ²	$\langle L \rangle = 0.49$, $\langle L^2 \rangle = 0.32$	Xtriage
Estimated twinning fraction	No twinning to report.	Xtriage
F_o, F_c correlation	0.97	EDS
Total number of atoms	6073	wwPDB-VP
Average B, all atoms (Å ²)	27.0	wwPDB-VP

Xtriage's analysis on translational NCS is as follows: *The largest off-origin peak in the Patterson function is 3.61% of the height of the origin peak. No significant pseudotranslation is detected.*

¹Intensities estimated from amplitudes.

²Theoretical values of $\langle |L| \rangle$, $\langle L^2 \rangle$ for acentric reflections are 0.5, 0.333 respectively for untwinned datasets, and 0.375, 0.2 for perfectly twinned datasets.

5 Model quality [i](#)

5.1 Standard geometry [i](#)

Bond lengths and bond angles in the following residue types are not validated in this section: ZN, CA, EDO, FE, MES, FK5

The Z score for a bond length (or angle) is the number of standard deviations the observed value is removed from the expected value. A bond length (or angle) with $|Z| > 5$ is considered an outlier worth inspection. RMSZ is the root-mean-square of all Z scores of the bond lengths (or angles).

Mol	Chain	Bond lengths		Bond angles	
		RMSZ	$\# Z > 5$	RMSZ	$\# Z > 5$
1	A	1.02	2/3101 (0.1%)	0.83	0/4219
2	B	0.77	0/1408	0.75	1/1886 (0.1%)
3	C	0.73	0/932	0.72	0/1254
All	All	0.91	2/5441 (0.0%)	0.80	1/7359 (0.0%)

All (2) bond length outliers are listed below:

Mol	Chain	Res	Type	Atoms	Z	Observed(Å)	Ideal(Å)
1	A	267	VAL	CB-CG1	-5.91	1.40	1.52
1	A	143	PHE	CE1-CZ	5.26	1.47	1.37

All (1) bond angle outliers are listed below:

Mol	Chain	Res	Type	Atoms	Z	Observed(°)	Ideal(°)
2	B	166	MET	CG-SD-CE	6.32	110.32	100.20

There are no chirality outliers.

There are no planarity outliers.

5.2 Too-close contacts [i](#)

In the following table, the Non-H and H(model) columns list the number of non-hydrogen atoms and hydrogen atoms in the chain respectively. The H(added) column lists the number of hydrogen atoms added and optimized by MolProbity. The Clashes column lists the number of clashes within the asymmetric unit, whereas Symm-Clashes lists symmetry related clashes.

Mol	Chain	Non-H	H(model)	H(added)	Clashes	Symm-Clashes
1	A	2974	0	2874	21	0
2	B	1374	0	1336	6	0

Continued on next page...

Continued from previous page...

Mol	Chain	Non-H	H(model)	H(added)	Clashes	Symm-Clashes
3	C	912	0	898	4	0
4	A	1	0	0	0	0
5	A	1	0	0	0	0
6	A	19	0	16	9	0
7	A	24	0	36	2	0
7	B	8	0	12	0	0
7	C	12	0	18	1	0
8	B	4	0	0	0	0
9	C	57	0	69	0	0
10	A	424	0	0	7	0
10	B	174	0	0	0	0
10	C	89	0	0	0	0
All	All	6073	0	5259	32	0

The all-atom clashscore is defined as the number of clashes found per 1000 atoms (including hydrogen atoms). The all-atom clashscore for this structure is 3.

All (32) close contacts within the same asymmetric unit are listed below, sorted by their clash magnitude.

Atom-1	Atom-2	Interatomic distance (Å)	Clash overlap (Å)
1:A:272:ARG:HH12	6:A:403:MES:H82	1.20	1.06
1:A:272:ARG:NH1	6:A:403:MES:H82	1.85	0.91
3:C:63[B]:GLU:HG3	3:C:65:LYS:HE2	1.66	0.77
1:A:272:ARG:HH12	6:A:403:MES:C8	1.99	0.74
2:B:166:MET:HE2	2:B:166:MET:HA	1.73	0.71
6:A:403:MES:N4	10:A:852:HOH:O	2.23	0.70
1:A:216[B]:ILE:HD12	1:A:297:ARG:HB3	1.73	0.70
1:A:386:ILE:HG23	2:B:30:LEU:HD11	1.79	0.64
1:A:376:GLY:HA2	2:B:166:MET:CE	2.31	0.60
1:A:376:GLY:HA2	2:B:166:MET:HE1	1.84	0.59
1:A:299:HIS:O	6:A:403:MES:H72	2.06	0.55
1:A:310[A]:GLN:OE1	10:A:501:HOH:O	2.17	0.55
6:A:403:MES:H72	10:A:851:HOH:O	2.09	0.52
1:A:185:LYS:NZ	10:A:899:HOH:O	2.42	0.52
3:C:118:GLU:HG2	7:C:203:EDO:H12	1.92	0.52
3:C:54:LYS:HD2	3:C:57:SER:HB3	1.96	0.47
1:A:323:ILE:HD13	1:A:340:LEU:HG	1.96	0.47
7:A:410:EDO:H21	10:A:863:HOH:O	2.15	0.47
1:A:216[B]:ILE:CD1	1:A:297:ARG:HB3	2.43	0.45
1:A:216[B]:ILE:HD11	1:A:295:ILE:CG2	2.46	0.45
1:A:272:ARG:HH12	6:A:403:MES:C7	2.29	0.44

Continued on next page...

Continued from previous page...

Atom-1	Atom-2	Interatomic distance (Å)	Clash overlap (Å)
2:B:166:MET:CE	2:B:166:MET:HA	2.45	0.44
1:A:252:ASP:O	1:A:277:PHE:HA	2.17	0.44
1:A:330:LEU:O	1:A:331:ASP:HB2	2.18	0.44
1:A:376:GLY:HA2	2:B:166:MET:HE3	2.01	0.43
6:A:403:MES:H81	10:A:744:HOH:O	2.18	0.43
1:A:311:LYS:HD2	1:A:316:GLY:O	2.19	0.42
7:A:405:EDO:H22	10:A:504:HOH:O	2.20	0.42
3:C:122:LYS:HE2	3:C:122:LYS:HA	2.03	0.41
1:A:280:TYR:HB3	1:A:281:PRO:HD3	2.02	0.40
1:A:299:HIS:O	6:A:403:MES:C7	2.70	0.40

There are no symmetry-related clashes.

5.3 Torsion angles [i](#)

5.3.1 Protein backbone [i](#)

In the following table, the Percentiles column shows the percent Ramachandran outliers of the chain as a percentile score with respect to all X-ray entries followed by that with respect to entries of similar resolution.

The Analysed column shows the number of residues for which the backbone conformation was analysed, and the total number of residues.

Mol	Chain	Analysed	Favoured	Allowed	Outliers	Percentiles	
1	A	369/390 (95%)	357 (97%)	11 (3%)	1 (0%)	46	29
2	B	174/171 (102%)	172 (99%)	2 (1%)	0	100	100
3	C	118/130 (91%)	112 (95%)	6 (5%)	0	100	100
All	All	661/691 (96%)	641 (97%)	19 (3%)	1 (0%)	52	36

All (1) Ramachandran outliers are listed below:

Mol	Chain	Res	Type
1	A	178	PHE

5.3.2 Protein sidechains [i](#)

In the following table, the Percentiles column shows the percent sidechain outliers of the chain as a percentile score with respect to all X-ray entries followed by that with respect to entries of similar

resolution.

The Analysed column shows the number of residues for which the sidechain conformation was analysed, and the total number of residues.

Mol	Chain	Analysed	Rotameric	Outliers	Percentiles	
1	A	321/344 (93%)	318 (99%)	3 (1%)	84	79
2	B	155/155 (100%)	155 (100%)	0	100	100
3	C	95/109 (87%)	93 (98%)	2 (2%)	61	45
All	All	571/608 (94%)	566 (99%)	5 (1%)	84	79

All (5) residues with a non-rotameric sidechain are listed below:

Mol	Chain	Res	Type
1	A	152	TRP
1	A	297	ARG
1	A	311	LYS
3	C	65	LYS
3	C	78	ASP

Some sidechains can be flipped to improve hydrogen bonding and reduce clashes. There are no such sidechains identified.

5.3.3 RNA ⓘ

There are no RNA molecules in this entry.

5.4 Non-standard residues in protein, DNA, RNA chains ⓘ

There are no non-standard protein/DNA/RNA residues in this entry.

5.5 Carbohydrates ⓘ

There are no carbohydrates in this entry.

5.6 Ligand geometry ⓘ

Of 20 ligands modelled in this entry, 6 are monoatomic - leaving 14 for Mogul analysis.

In the following table, the Counts columns list the number of bonds (or angles) for which Mogul statistics could be retrieved, the number of bonds (or angles) that are observed in the model and

the number of bonds (or angles) that are defined in the chemical component dictionary. The Link column lists molecule types, if any, to which the group is linked. The Z score for a bond length (or angle) is the number of standard deviations the observed value is removed from the expected value. A bond length (or angle) with $|Z| > 2$ is considered an outlier worth inspection. RMSZ is the root-mean-square of all Z scores of the bond lengths (or angles).

Mol	Type	Chain	Res	Link	Bond lengths			Bond angles		
					Counts	RMSZ	$\# Z > 2$	Counts	RMSZ	$\# Z > 2$
6	MES	A	403	5,4	5,6,12	4.04	2 (40%)	7,8,16	4.32	4 (57%)
6	MES	A	404	-	12,12,12	1.47	1 (8%)	15,16,16	2.73	7 (46%)
7	EDO	A	405	-	3,3,3	0.70	0	2,2,2	0.59	0
7	EDO	A	406	-	3,3,3	0.69	0	2,2,2	0.18	0
7	EDO	A	407	-	3,3,3	0.56	0	2,2,2	0.96	0
7	EDO	A	408	-	3,3,3	0.70	0	2,2,2	0.50	0
7	EDO	A	409	-	3,3,3	0.63	0	2,2,2	0.67	0
7	EDO	A	410	-	3,3,3	0.28	0	2,2,2	2.42	1 (50%)
7	EDO	B	205	-	3,3,3	0.77	0	2,2,2	0.24	0
7	EDO	B	206	-	3,3,3	0.43	0	2,2,2	0.75	0
9	FK5	C	201	-	54,60,60	3.29	13 (24%)	58,86,86	1.87	13 (22%)
7	EDO	C	202	-	3,3,3	0.51	0	2,2,2	0.28	0
7	EDO	C	203	-	3,3,3	0.44	0	2,2,2	0.49	0
7	EDO	C	204	-	3,3,3	0.54	0	2,2,2	0.30	0

In the following table, the Chirals column lists the number of chiral outliers, the number of chiral centers analysed, the number of these observed in the model and the number defined in the chemical component dictionary. Similar counts are reported in the Torsion and Rings columns. '-' means no outliers of that kind were identified.

Mol	Type	Chain	Res	Link	Chirals	Torsions	Rings
6	MES	A	403	5,4	-	0/4/4/14	0/0/0/1
6	MES	A	404	-	-	0/6/14/14	0/1/1/1
7	EDO	A	405	-	-	0/1/1/1	0/0/0/0
7	EDO	A	406	-	-	0/1/1/1	0/0/0/0
7	EDO	A	407	-	-	0/1/1/1	0/0/0/0
7	EDO	A	408	-	-	0/1/1/1	0/0/0/0
7	EDO	A	409	-	-	0/1/1/1	0/0/0/0
7	EDO	A	410	-	-	0/1/1/1	0/0/0/0
7	EDO	B	205	-	-	0/1/1/1	0/0/0/0
7	EDO	B	206	-	-	0/1/1/1	0/0/0/0
9	FK5	C	201	-	-	0/68/114/114	0/2/4/4
7	EDO	C	202	-	-	0/1/1/1	0/0/0/0
7	EDO	C	203	-	-	0/1/1/1	0/0/0/0
7	EDO	C	204	-	-	0/1/1/1	0/0/0/0

All (16) bond length outliers are listed below:

Mol	Chain	Res	Type	Atoms	Z	Observed(Å)	Ideal(Å)
9	C	201	FK5	C8-C9	-12.16	1.40	1.53
6	A	403	MES	C8-S	-8.61	1.64	1.77
6	A	404	MES	C8-S	-4.63	1.70	1.77
9	C	201	FK5	O1-C1	-3.13	1.26	1.34
6	A	403	MES	O2S-S	2.03	1.51	1.45
9	C	201	FK5	C41-C25	2.23	1.58	1.53
9	C	201	FK5	C30-C31	2.24	1.56	1.52
9	C	201	FK5	C40-C39	2.81	1.48	1.28
9	C	201	FK5	C16-C15	3.63	1.59	1.52
9	C	201	FK5	C28-C27	4.95	1.44	1.33
9	C	201	FK5	O3-C8	5.29	1.34	1.23
9	C	201	FK5	O6-C10	5.29	1.48	1.39
9	C	201	FK5	O2-C1	6.04	1.36	1.21
9	C	201	FK5	O9-C22	8.81	1.37	1.21
9	C	201	FK5	C20-C19	9.21	1.48	1.33
9	C	201	FK5	O4-C9	9.31	1.38	1.22

All (25) bond angle outliers are listed below:

Mol	Chain	Res	Type	Atoms	Z	Observed(°)	Ideal(°)
9	C	201	FK5	O2-C1-C2	-4.13	115.39	124.58
9	C	201	FK5	C21-C20-C19	-3.53	122.39	127.23
7	A	410	EDO	O1-C1-C2	-3.42	88.86	112.23
9	C	201	FK5	O12-C32-C31	-3.35	103.06	109.70
6	A	403	MES	O2S-S-C8	-3.29	104.55	106.87
9	C	201	FK5	C30-C29-C28	-3.20	106.83	111.17
9	C	201	FK5	C33-C34-C29	-3.04	107.15	110.88
6	A	403	MES	O1S-S-C8	-2.88	104.83	106.87
9	C	201	FK5	C41-C25-C26	-2.73	107.48	110.87
9	C	201	FK5	O9-C22-C23	-2.70	117.95	121.45
9	C	201	FK5	O5-C14-C13	-2.48	105.66	109.50
9	C	201	FK5	O1-C1-O2	-2.18	119.65	123.88
9	C	201	FK5	C42-C27-C26	2.06	119.23	115.61
9	C	201	FK5	C37-C19-C18	2.61	119.15	115.58
6	A	404	MES	O1-C2-C3	2.64	117.94	111.83
6	A	404	MES	C7-N4-C3	2.91	117.59	111.25
6	A	404	MES	O1S-S-C8	2.99	108.98	106.87
9	C	201	FK5	C30-C29-C34	3.37	112.87	108.65
6	A	404	MES	C2-C3-N4	3.49	115.45	110.11
6	A	403	MES	O3S-S-C8	3.74	112.76	104.99
6	A	404	MES	C7-N4-C5	3.80	119.52	111.25
6	A	404	MES	O2S-S-C8	4.79	110.25	106.87

Continued on next page...

Continued from previous page...

Mol	Chain	Res	Type	Atoms	Z	Observed(°)	Ideal(°)
6	A	404	MES	C5-N4-C3	5.59	121.38	108.87
9	C	201	FK5	O1-C1-C2	6.42	124.84	110.75
6	A	403	MES	C7-C8-S	9.59	122.49	112.73

There are no chirality outliers.

There are no torsion outliers.

There are no ring outliers.

4 monomers are involved in 12 short contacts:

Mol	Chain	Res	Type	Clashes	Symm-Clashes
6	A	403	MES	9	0
7	A	405	EDO	1	0
7	A	410	EDO	1	0
7	C	203	EDO	1	0

5.7 Other polymers [i](#)

There are no such residues in this entry.

5.8 Polymer linkage issues [i](#)

There are no chain breaks in this entry.

6 Fit of model and data [i](#)

6.1 Protein, DNA and RNA chains [i](#)

In the following table, the column labelled ‘#RSRZ> 2’ contains the number (and percentage) of RSRZ outliers, followed by percent RSRZ outliers for the chain as percentile scores relative to all X-ray entries and entries of similar resolution. The OWAB column contains the minimum, median, 95th percentile and maximum values of the occupancy-weighted average B-factor per residue. The column labelled ‘Q< 0.9’ lists the number of (and percentage) of residues with an average occupancy less than 0.9.

Mol	Chain	Analysed	<RSRZ>	#RSRZ>2	OWAB(Å ²)	Q<0.9
1	A	359/390 (92%)	-0.41	1 (0%) 94 93	10, 17, 42, 61	0
2	B	171/171 (100%)	-0.41	2 (1%) 81 81	16, 28, 44, 80	0
3	C	119/130 (91%)	-0.18	1 (0%) 87 87	21, 37, 54, 70	0
All	All	649/691 (93%)	-0.37	4 (0%) 90 90	10, 23, 48, 80	0

All (4) RSRZ outliers are listed below:

Mol	Chain	Res	Type	RSRZ
2	B	1	MET	4.9
2	B	171	PHE	4.8
3	C	50	PHE	2.4
1	A	31	GLU	2.0

6.2 Non-standard residues in protein, DNA, RNA chains [i](#)

There are no non-standard protein/DNA/RNA residues in this entry.

6.3 Carbohydrates [i](#)

There are no carbohydrates in this entry.

6.4 Ligands [i](#)

In the following table, the Atoms column lists the number of modelled atoms in the group and the number defined in the chemical component dictionary. LLDF column lists the quality of electron density of the group with respect to its neighbouring residues in protein, DNA or RNA chains. The B-factors column lists the minimum, median, 95th percentile and maximum values of B factors of atoms in the group. The column labelled ‘Q< 0.9’ lists the number of atoms with occupancy less than 0.9.

Mol	Type	Chain	Res	Atoms	RSCC	RSR	LLDF	B-factors(\AA^2)	Q<0.9
7	EDO	C	204	4/4	0.74	0.21	14.10	56,57,59,59	0
7	EDO	A	409	4/4	0.94	0.18	13.69	22,32,36,37	0
7	EDO	A	410	4/4	0.89	0.20	9.76	18,23,25,37	0
7	EDO	A	405	4/4	0.84	0.17	6.06	34,38,38,40	0
6	MES	A	403	7/12	0.96	0.16	4.82	20,21,25,29	7
7	EDO	A	408	4/4	0.83	0.19	4.13	43,44,44,48	0
7	EDO	B	206	4/4	0.92	0.15	3.32	38,39,43,49	0
7	EDO	A	406	4/4	0.96	0.14	2.83	18,27,30,33	0
7	EDO	C	202	4/4	0.94	0.18	2.04	48,48,49,49	0
6	MES	A	404	12/12	0.94	0.14	1.26	20,25,29,31	12
7	EDO	C	203	4/4	0.91	0.13	1.20	54,55,56,58	0
7	EDO	A	407	4/4	0.97	0.08	0.07	21,22,22,24	0
9	FK5	C	201	57/57	0.96	0.07	-0.12	13,19,25,26	0
8	CA	B	201	1/1	0.99	0.06	-0.94	20,20,20,20	0
8	CA	B	202	1/1	1.00	0.05	-1.08	21,21,21,21	0
5	FE	A	402	1/1	1.00	0.07	-1.63	15,15,15,15	1
8	CA	B	204	1/1	0.98	0.04	-1.68	26,26,26,26	0
8	CA	B	203	1/1	0.98	0.05	-1.86	26,26,26,26	0
4	ZN	A	401	1/1	0.99	0.07	-3.00	19,19,19,19	1
7	EDO	B	205	4/4	0.77	0.25	-	42,48,49,51	0

6.5 Other polymers [i](#)

There are no such residues in this entry.