



wwPDB X-ray Structure Validation Summary Report ⓘ

Feb 1, 2016 – 03:03 PM GMT

PDB ID : 4BBF
Title : Aminoalkylpyrimidine Inhibitor Complexes with JAK2
Authors : Li, J.
Deposited on : 2012-09-21
Resolution : 2.00 Å(reported)

This is a wwPDB X-ray Structure Validation Summary Report for a publicly released PDB entry.
We welcome your comments at validation@mail.wwpdb.org
A user guide is available at
<http://wwpdb.org/validation/2016/XrayValidationReportHelp>
with specific help available everywhere you see the ⓘ symbol.

The following versions of software and data (see [references ⓘ](#)) were used in the production of this report:

MolProbity : 4.02b-467
Mogul : 1.7 (RC4), CSD as536be (2015)
Xtriage (Phenix) : 1.9-1692
EDS : rb-20026688
Percentile statistics : 20151230.v01 (using entries in the PDB archive December 30th 2015)
Refmac : 5.8.0135
CCP4 : 6.5.0
Ideal geometry (proteins) : Engh & Huber (2001)
Ideal geometry (DNA, RNA) : Parkinson et al. (1996)
Validation Pipeline (wwPDB-VP) : trunk26865

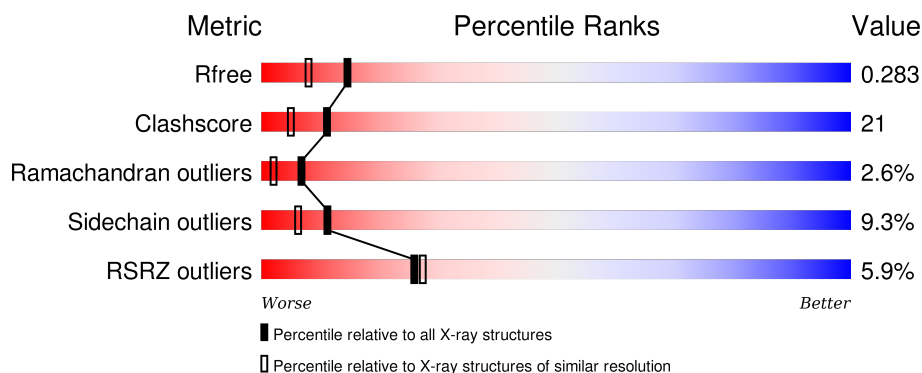
1 Overall quality at a glance ⓘ

The following experimental techniques were used to determine the structure:

X-RAY DIFFRACTION

The reported resolution of this entry is 2.00 Å.

Percentile scores (ranging between 0-100) for global validation metrics of the entry are shown in the following graphic. The table shows the number of entries on which the scores are based.



Metric	Whole archive (#Entries)	Similar resolution (#Entries, resolution range(Å))
R_{free}	91344	6249 (2.00-2.00)
Clashscore	102246	7340 (2.00-2.00)
Ramachandran outliers	100387	7248 (2.00-2.00)
Sidechain outliers	100360	7247 (2.00-2.00)
RSRZ outliers	91569	6262 (2.00-2.00)

The table below summarises the geometric issues observed across the polymeric chains and their fit to the electron density. The red, orange, yellow and green segments on the lower bar indicate the fraction of residues that contain outliers for ≥ 3 , 2, 1 and 0 types of geometric quality criteria. A grey segment represents the fraction of residues that are not modelled. The numeric value for each fraction is indicated below the corresponding segment, with a dot representing fractions $\leq 5\%$. The upper red bar (where present) indicates the fraction of residues that have poor fit to the electron density. The numeric value is given above the bar.

Mol	Chain	Length	Quality of chain
1	A	298	<div> <div>5%</div> <div>69% 21% 6% . .</div> </div>
1	B	298	<div> <div>6%</div> <div>61% 28% 6% . .</div> </div>
1	C	298	<div> <div>6%</div> <div>66% 21% 8% . .</div> </div>
1	D	298	<div> <div>5%</div> <div>68% 24% . . .</div> </div>

2 Entry composition

There are 3 unique types of molecules in this entry. The entry contains 10083 atoms, of which 0 are hydrogens and 0 are deuteriums.

In the tables below, the ZeroOcc column contains the number of atoms modelled with zero occupancy, the AltConf column contains the number of residues with at least one atom in alternate conformation and the Trace column contains the number of residues modelled with at most 2 atoms.

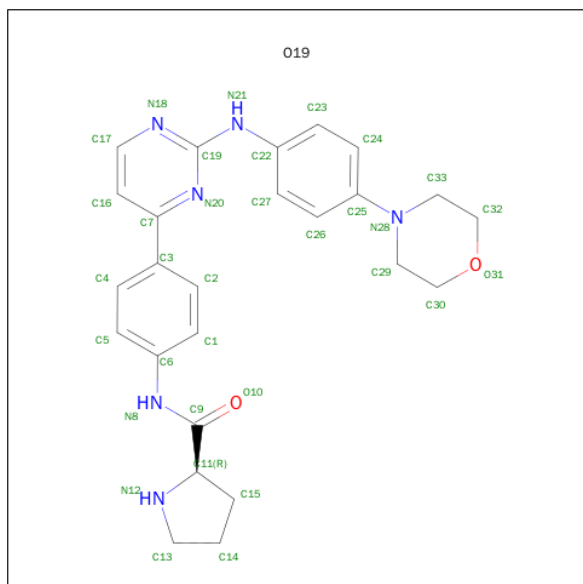
- Molecule 1 is a protein called TYROSINE-PROTEIN KINASE JAK2.

Mol	Chain	Residues	Atoms					ZeroOcc	AltConf	Trace
1	A	288	Total	C	N	O	S	0	0	0
			2379	1515	415	436	13			
1	B	288	Total	C	N	O	S	0	0	0
			2379	1515	415	436	13			
1	C	288	Total	C	N	O	S	0	0	0
			2379	1515	415	436	13			
1	D	288	Total	C	N	O	S	0	0	0
			2379	1515	415	436	13			

There are 20 discrepancies between the modelled and reference sequences:

Chain	Residue	Modelled	Actual	Comment	Reference
A	837	GLY	-	EXPRESSION TAG	UNP O60674
A	838	SER	-	EXPRESSION TAG	UNP O60674
A	976	ASN	ASP	ENGINEERED MUTATION	UNP O60674
A	1133	GLU	-	EXPRESSION TAG	UNP O60674
A	1134	PHE	-	EXPRESSION TAG	UNP O60674
B	837	GLY	-	EXPRESSION TAG	UNP O60674
B	838	SER	-	EXPRESSION TAG	UNP O60674
B	976	ASN	ASP	ENGINEERED MUTATION	UNP O60674
B	1133	GLU	-	EXPRESSION TAG	UNP O60674
B	1134	PHE	-	EXPRESSION TAG	UNP O60674
C	837	GLY	-	EXPRESSION TAG	UNP O60674
C	838	SER	-	EXPRESSION TAG	UNP O60674
C	976	ASN	ASP	ENGINEERED MUTATION	UNP O60674
C	1133	GLU	-	EXPRESSION TAG	UNP O60674
C	1134	PHE	-	EXPRESSION TAG	UNP O60674
D	837	GLY	-	EXPRESSION TAG	UNP O60674
D	838	SER	-	EXPRESSION TAG	UNP O60674
D	976	ASN	ASP	ENGINEERED MUTATION	UNP O60674
D	1133	GLU	-	EXPRESSION TAG	UNP O60674
D	1134	PHE	-	EXPRESSION TAG	UNP O60674

- Molecule 2 is (2R)-N-[4-[2-[(4-MORPHOLIN-4-YL)PHENYL]AMINO]PYRIMIDIN-4-YL]PHENYL]PYRROLIDINE-2-CARBOXAMIDE (three-letter code: O19) (formula: $C_{25}H_{28}N_6O_2$).



Mol	Chain	Residues	Atoms				ZeroOcc	AltConf
2	A	1	Total	C	N	O	0	0
			33	25	6	2		
2	B	1	Total	C	N	O	0	0
			33	25	6	2		
2	C	1	Total	C	N	O	0	0
			33	25	6	2		
2	D	1	Total	C	N	O	0	0
			33	25	6	2		

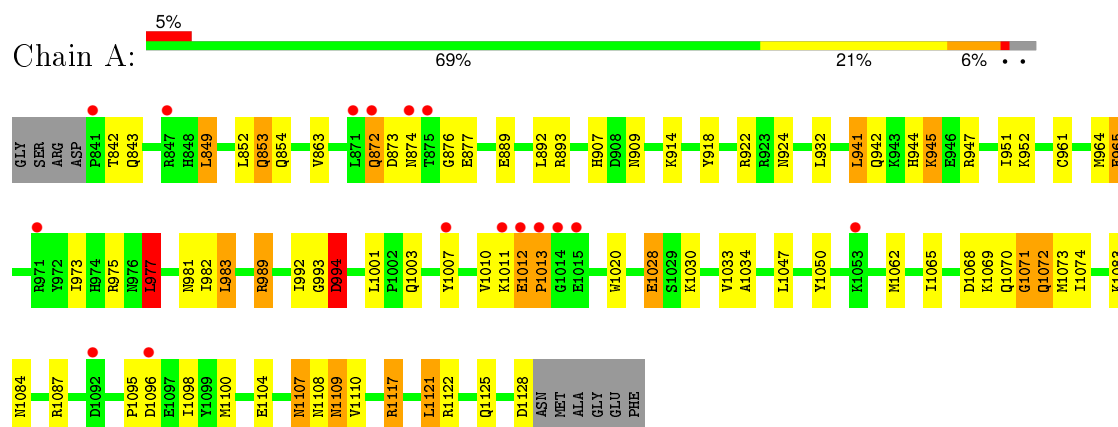
- Molecule 3 is water.

Mol	Chain	Residues	Atoms		ZeroOcc	AltConf
3	A	118	Total	O	0	0
			118	118		
3	B	106	Total	O	0	0
			106	106		
3	C	110	Total	O	0	0
			110	110		
3	D	101	Total	O	0	0
			101	101		

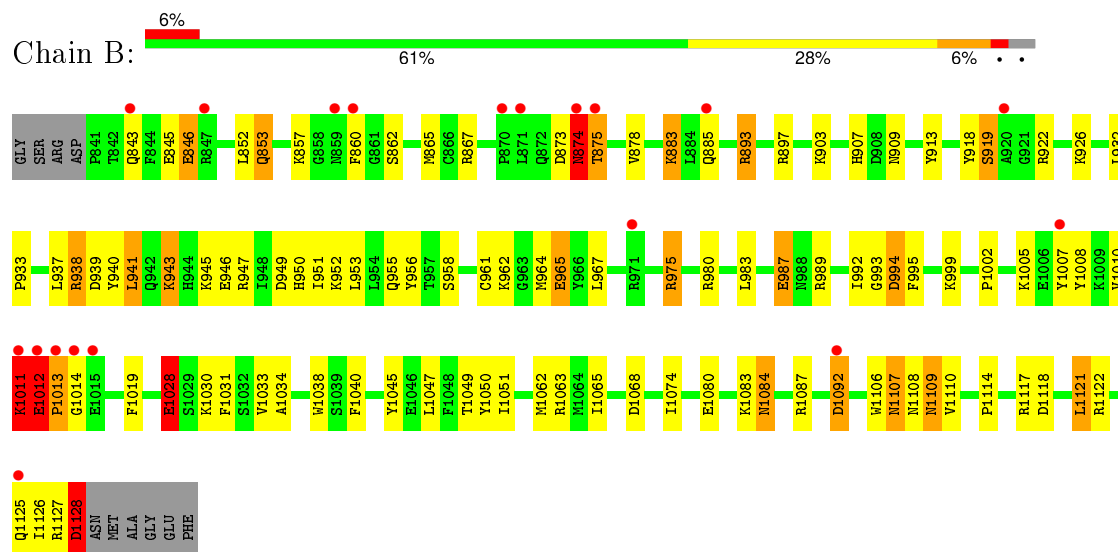
3 Residue-property plots

These plots are drawn for all protein, RNA and DNA chains in the entry. The first graphic for a chain summarises the proportions of errors displayed in the second graphic. The second graphic shows the sequence view annotated by issues in geometry and electron density. Residues are color-coded according to the number of geometric quality criteria for which they contain at least one outlier: green = 0, yellow = 1, orange = 2 and red = 3 or more. A red dot above a residue indicates a poor fit to the electron density ($RSRZ > 2$). Stretches of 2 or more consecutive residues without any outlier are shown as a green connector. Residues present in the sample, but not in the model, are shown in grey.

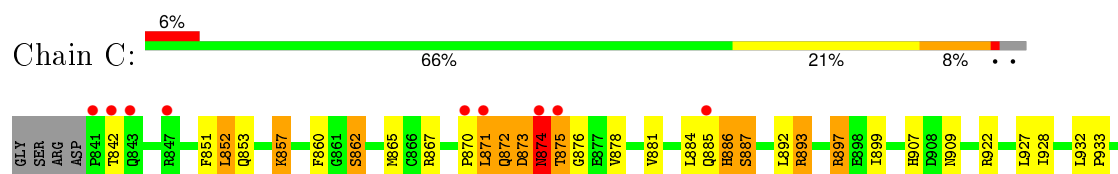
• Molecule 1: TYROSINE-PROTEIN KINASE JAK2

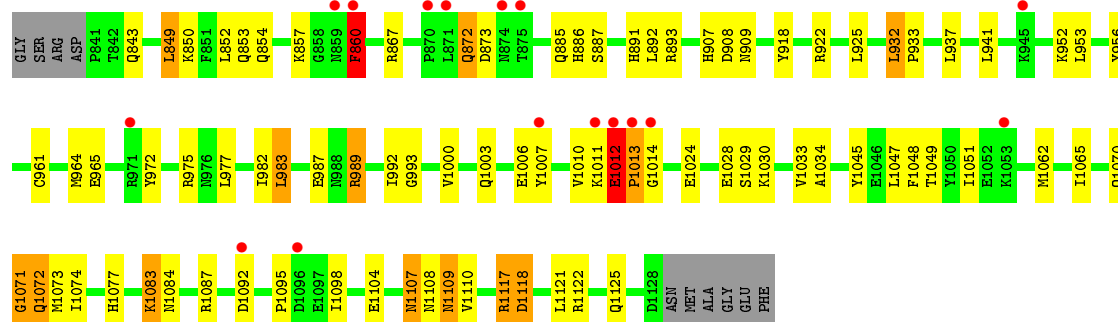


• Molecule 1: TYROSINE-PROTEIN KINASE JAK2



• Molecule 1: TYROSINE-PROTEIN KINASE JAK2





4 Data and refinement statistics

Property	Value	Source
Space group	P 1	Depositor
Cell constants a, b, c, α , β , γ	68.95Å 76.01Å 88.18Å 75.53° 67.00° 63.04°	Depositor
Resolution (Å)	80.85 – 2.00 27.11 – 2.00	Depositor EDS
% Data completeness (in resolution range)	94.9 (80.85-2.00) 92.0 (27.11-2.00)	Depositor EDS
R_{merge}	0.04	Depositor
R_{sym}	(Not available)	Depositor
$\langle I/\sigma(I) \rangle$ ¹	2.54 (at 1.99Å)	Xtriage
Refinement program	REFMAC 5.2.0019	Depositor
R, R_{free}	0.229 , 0.289 0.225 , 0.283	Depositor DCC
R_{free} test set	4926 reflections (5.53%)	DCC
Wilson B-factor (Å ²)	29.0	Xtriage
Anisotropy	0.052	Xtriage
Bulk solvent k_{sol} (e/Å ³), B_{sol} (Å ²)	0.38 , 29.5	EDS
Estimated twinning fraction	0.467 for h,h-k,h-l	Xtriage
L-test for twinning ²	$\langle L \rangle = 0.51$, $\langle L^2 \rangle = 0.35$	Xtriage
Outliers	0 of 93784 reflections	Xtriage
F_o, F_c correlation	0.95	EDS
Total number of atoms	10083	wwPDB-VP
Average B, all atoms (Å ²)	28.0	wwPDB-VP

Xtriage's analysis on translational NCS is as follows: *The analyses of the Patterson function reveals a significant off-origin peak that is 53.68 % of the origin peak, indicating pseudo translational symmetry. The chance of finding a peak of this or larger height randomly in a structure without pseudo translational symmetry is equal to 4.0709e-05. The detected translational NCS is most likely also responsible for the elevated intensity ratio.*

¹Intensities estimated from amplitudes.

²Theoretical values of $\langle |L| \rangle$, $\langle L^2 \rangle$ for acentric reflections are 0.5, 0.375 respectively for untwinned datasets, and 0.333, 0.2 for perfectly twinned datasets.

5 Model quality [i](#)

5.1 Standard geometry [i](#)

Bond lengths and bond angles in the following residue types are not validated in this section: O19

The Z score for a bond length (or angle) is the number of standard deviations the observed value is removed from the expected value. A bond length (or angle) with $|Z| > 5$ is considered an outlier worth inspection. RMSZ is the root-mean-square of all Z scores of the bond lengths (or angles).

Mol	Chain	Bond lengths		Bond angles	
		RMSZ	# Z >5	RMSZ	# Z >5
1	A	1.08	3/2432 (0.1%)	1.04	7/3274 (0.2%)
1	B	1.10	6/2432 (0.2%)	1.03	8/3274 (0.2%)
1	C	1.11	1/2432 (0.0%)	1.07	9/3274 (0.3%)
1	D	1.10	4/2432 (0.2%)	1.03	7/3274 (0.2%)
All	All	1.10	14/9728 (0.1%)	1.04	31/13096 (0.2%)

Chiral center outliers are detected by calculating the chiral volume of a chiral center and verifying if the center is modelled as a planar moiety or with the opposite hand. A planarity outlier is detected by checking planarity of atoms in a peptide group, atoms in a mainchain group or atoms of a sidechain that are expected to be planar.

Mol	Chain	#Chirality outliers	#Planarity outliers
1	A	0	2
1	B	1	1
1	C	0	3
1	D	0	2
All	All	1	8

The worst 5 of 14 bond length outliers are listed below:

Mol	Chain	Res	Type	Atoms	Z	Observed(Å)	Ideal(Å)
1	B	1128	ASP	N-CA	8.25	1.62	1.46
1	C	1128	ASP	N-CA	7.22	1.60	1.46
1	D	1117	ARG	CB-CG	7.21	1.72	1.52
1	B	1092	ASP	CB-CG	6.10	1.64	1.51
1	A	1028	GLU	CG-CD	5.51	1.60	1.51

The worst 5 of 31 bond angle outliers are listed below:

Mol	Chain	Res	Type	Atoms	Z	Observed(°)	Ideal(°)
1	D	975	ARG	NE-CZ-NH1	9.64	125.12	120.30
1	B	1128	ASP	N-CA-C	8.99	135.26	111.00
1	C	949	ASP	CB-CG-OD1	8.60	126.04	118.30
1	B	975	ARG	NE-CZ-NH2	-8.27	116.16	120.30
1	A	975	ARG	NE-CZ-NH1	7.17	123.89	120.30

All (1) chirality outliers are listed below:

Mol	Chain	Res	Type	Atom
1	B	1128	ASP	CA

5 of 8 planarity outliers are listed below:

Mol	Chain	Res	Type	Group
1	A	1012	GLU	Peptide
1	A	872	GLN	Peptide
1	B	1012	GLU	Peptide
1	C	1012	GLU	Peptide
1	C	1068	ASP	Peptide

5.2 Too-close contacts

In the following table, the Non-H and H(model) columns list the number of non-hydrogen atoms and hydrogen atoms in the chain respectively. The H(added) column lists the number of hydrogen atoms added and optimized by MolProbity. The Clashes column lists the number of clashes within the asymmetric unit, whereas Symm-Clashes lists symmetry related clashes.

Mol	Chain	Non-H	H(model)	H(added)	Clashes	Symm-Clashes
1	A	2379	0	2369	87	0
1	B	2379	0	2369	121	1
1	C	2379	0	2369	124	0
1	D	2379	0	2369	83	0
2	A	33	0	28	2	0
2	B	33	0	28	1	0
2	C	33	0	28	1	0
2	D	33	0	28	1	0
3	A	118	0	0	21	0
3	B	106	0	0	28	0
3	C	110	0	0	35	0
3	D	101	0	0	4	1
All	All	10083	0	9588	400	1

The all-atom clashscore is defined as the number of clashes found per 1000 atoms (including hydrogen atoms). The all-atom clashscore for this structure is 21.

The worst 5 of 400 close contacts within the same asymmetric unit are listed below, sorted by their clash magnitude.

Atom-1	Atom-2	Interatomic distance (Å)	Clash overlap (Å)
1:D:964:MET:CE	1:D:992:ILE:HD13	1.37	1.52
1:B:964:MET:CE	1:B:992:ILE:HD13	1.49	1.39
1:C:1117:ARG:NH1	1:C:1117:ARG:HB3	1.40	1.35
1:D:860:PHE:CZ	1:D:891:HIS:HD2	1.48	1.29
1:B:1084:ASN:HB3	3:B:2076:HOH:O	1.35	1.27

All (1) symmetry-related close contacts are listed below. The label for Atom-2 includes the symmetry operator and encoded unit-cell translations to be applied.

Atom-1	Atom-2	Interatomic distance (Å)	Clash overlap (Å)
1:B:1128:ASP:OD2	3:D:2039:HOH:O[1_645]	2.17	0.03

5.3 Torsion angles [i](#)

5.3.1 Protein backbone [i](#)

In the following table, the Percentiles column shows the percent Ramachandran outliers of the chain as a percentile score with respect to all X-ray entries followed by that with respect to entries of similar resolution.

The Analysed column shows the number of residues for which the backbone conformation was analysed, and the total number of residues.

Mol	Chain	Analysed	Favoured	Allowed	Outliers	Percentiles	
1	A	286/298 (96%)	268 (94%)	11 (4%)	7 (2%)	7	2
1	B	286/298 (96%)	264 (92%)	15 (5%)	7 (2%)	7	2
1	C	286/298 (96%)	266 (93%)	10 (4%)	10 (4%)	4	1
1	D	286/298 (96%)	269 (94%)	11 (4%)	6 (2%)	9	3
All	All	1144/1192 (96%)	1067 (93%)	47 (4%)	30 (3%)	7	2

5 of 30 Ramachandran outliers are listed below:

Mol	Chain	Res	Type
1	A	1071	GLY

Continued on next page...

Continued from previous page...

Mol	Chain	Res	Type
1	A	1072	GLN
1	B	873	ASP
1	B	874	ASN
1	B	994	ASP

5.3.2 Protein sidechains ⓘ

In the following table, the Percentiles column shows the percent sidechain outliers of the chain as a percentile score with respect to all X-ray entries followed by that with respect to entries of similar resolution.

The Analysed column shows the number of residues for which the sidechain conformation was analysed, and the total number of residues.

Mol	Chain	Analysed	Rotameric	Outliers	Percentiles	
1	A	263/271 (97%)	238 (90%)	25 (10%)	11	6
1	B	263/271 (97%)	238 (90%)	25 (10%)	11	6
1	C	263/271 (97%)	235 (89%)	28 (11%)	8	4
1	D	263/271 (97%)	243 (92%)	20 (8%)	16	10
All	All	1052/1084 (97%)	954 (91%)	98 (9%)	11	6

5 of 98 residues with a non-rotameric sidechain are listed below:

Mol	Chain	Res	Type
1	B	1084	ASN
1	C	871	LEU
1	D	1051	ILE
1	B	1107	ASN
1	B	1128	ASP

Some sidechains can be flipped to improve hydrogen bonding and reduce clashes. 5 of 53 such sidechains are listed below:

Mol	Chain	Res	Type
1	B	1112	GLN
1	C	909	ASN
1	D	1107	ASN
1	B	1125	GLN
1	C	874	ASN

5.3.3 RNA ⓘ

There are no RNA molecules in this entry.

5.4 Non-standard residues in protein, DNA, RNA chains ⓘ

There are no non-standard protein/DNA/RNA residues in this entry.

5.5 Carbohydrates ⓘ

There are no carbohydrates in this entry.

5.6 Ligand geometry ⓘ

4 ligands are modelled in this entry.

In the following table, the Counts columns list the number of bonds (or angles) for which Mogul statistics could be retrieved, the number of bonds (or angles) that are observed in the model and the number of bonds (or angles) that are defined in the chemical component dictionary. The Link column lists molecule types, if any, to which the group is linked. The Z score for a bond length (or angle) is the number of standard deviations the observed value is removed from the expected value. A bond length (or angle) with $|Z| > 2$ is considered an outlier worth inspection. RMSZ is the root-mean-square of all Z scores of the bond lengths (or angles).

Mol	Type	Chain	Res	Link	Bond lengths			Bond angles		
					Counts	RMSZ	# $ Z > 2$	Counts	RMSZ	# $ Z > 2$
2	O19	A	2229	-	37,37,37	0.80	0	50,50,50	2.63	14 (28%)
2	O19	B	2229	-	37,37,37	0.91	0	50,50,50	2.44	11 (22%)
2	O19	C	2229	-	37,37,37	1.05	1 (2%)	50,50,50	2.45	9 (18%)
2	O19	D	2229	-	37,37,37	0.78	0	50,50,50	2.80	13 (26%)

In the following table, the Chirals column lists the number of chiral outliers, the number of chiral centers analysed, the number of these observed in the model and the number defined in the chemical component dictionary. Similar counts are reported in the Torsion and Rings columns. '-' means no outliers of that kind were identified.

Mol	Type	Chain	Res	Link	Chirals	Torsions	Rings
2	O19	A	2229	-	-	0/20/35/35	0/5/5/5
2	O19	B	2229	-	-	0/20/35/35	0/5/5/5
2	O19	C	2229	-	-	0/20/35/35	0/5/5/5
2	O19	D	2229	-	-	0/20/35/35	0/5/5/5

All (1) bond length outliers are listed below:

Mol	Chain	Res	Type	Atoms	Z	Observed(Å)	Ideal(Å)
2	C	2229	O19	C26-C25	2.04	1.43	1.39

The worst 5 of 47 bond angle outliers are listed below:

Mol	Chain	Res	Type	Atoms	Z	Observed(°)	Ideal(°)
2	D	2229	O19	N18-C19-N20	-9.10	116.98	126.67
2	C	2229	O19	N18-C19-N20	-8.15	117.98	126.67
2	A	2229	O19	N18-C19-N20	-7.43	118.76	126.67
2	B	2229	O19	N18-C19-N20	-7.15	119.05	126.67
2	A	2229	O19	C16-C17-N18	-4.69	118.55	123.90

There are no chirality outliers.

There are no torsion outliers.

There are no ring outliers.

4 monomers are involved in 5 short contacts:

Mol	Chain	Res	Type	Clashes	Symm-Clashes
2	A	2229	O19	2	0
2	B	2229	O19	1	0
2	C	2229	O19	1	0
2	D	2229	O19	1	0

5.7 Other polymers [i](#)

There are no such residues in this entry.

5.8 Polymer linkage issues [i](#)

There are no chain breaks in this entry.

6 Fit of model and data [i](#)

6.1 Protein, DNA and RNA chains [i](#)

In the following table, the column labelled ‘#RSRZ> 2’ contains the number (and percentage) of RSRZ outliers, followed by percent RSRZ outliers for the chain as percentile scores relative to all X-ray entries and entries of similar resolution. The OWAB column contains the minimum, median, 95th percentile and maximum values of the occupancy-weighted average B-factor per residue. The column labelled ‘Q< 0.9’ lists the number of (and percentage) of residues with an average occupancy less than 0.9.

Mol	Chain	Analysed	<RSRZ>	#RSRZ>2	OWAB(Å ²)	Q<0.9
1	A	288/298 (96%)	0.12	16 (5%) 28 29	14, 25, 46, 67	3 (1%)
1	B	288/298 (96%)	0.14	19 (6%) 22 22	14, 26, 52, 64	3 (1%)
1	C	288/298 (96%)	0.19	17 (5%) 26 27	15, 26, 50, 67	3 (1%)
1	D	288/298 (96%)	0.11	16 (5%) 28 29	12, 25, 46, 62	3 (1%)
All	All	1152/1192 (96%)	0.14	68 (5%) 26 27	12, 26, 49, 67	12 (1%)

The worst 5 of 68 RSRZ outliers are listed below:

Mol	Chain	Res	Type	RSRZ
1	A	1013	PRO	7.9
1	D	1014	GLY	7.2
1	C	1013	PRO	6.7
1	C	875	THR	6.6
1	A	1014	GLY	6.3

6.2 Non-standard residues in protein, DNA, RNA chains [i](#)

There are no non-standard protein/DNA/RNA residues in this entry.

6.3 Carbohydrates [i](#)

There are no carbohydrates in this entry.

6.4 Ligands [i](#)

In the following table, the Atoms column lists the number of modelled atoms in the group and the number defined in the chemical component dictionary. LLDF column lists the quality of electron density of the group with respect to its neighbouring residues in protein, DNA or RNA chains. The B-factors column lists the minimum, median, 95th percentile and maximum values of B factors

of atoms in the group. The column labelled 'Q< 0.9' lists the number of atoms with occupancy less than 0.9.

Mol	Type	Chain	Res	Atoms	RSCC	RSR	LLDF	B-factors(\AA^2)	Q<0.9
2	O19	C	2229	33/33	0.93	0.12	0.05	22,26,40,42	0
2	O19	A	2229	33/33	0.95	0.11	-0.32	19,24,35,39	0
2	O19	B	2229	33/33	0.92	0.11	-0.41	23,27,39,40	0
2	O19	D	2229	33/33	0.94	0.11	-0.47	19,24,35,37	0

6.5 Other polymers [i](#)

There are no such residues in this entry.