



# Full wwPDB X-ray Structure Validation Report ⓘ

Feb 1, 2016 – 03:05 PM GMT

PDB ID : 4BEM  
Title : Crystal structure of the F-type ATP synthase c-ring from *Acetobacterium woodii*.  
Authors : Matthies, D.; Meier, T.; Yildiz, O.  
Deposited on : 2013-03-11  
Resolution : 2.10 Å(reported)

This is a Full wwPDB X-ray Structure Validation Report for a publicly released PDB entry.  
We welcome your comments at [validation@mail.wwpdb.org](mailto:validation@mail.wwpdb.org)  
A user guide is available at  
<http://wwpdb.org/validation/2016/XrayValidationReportHelp>  
with specific help available everywhere you see the ⓘ symbol.

---

The following versions of software and data (see [references ⓘ](#)) were used in the production of this report:

MolProbity : 4.02b-467  
Mogul : 1.7 (RC4), CSD as536be (2015)  
Xtriage (Phenix) : 1.9-1692  
EDS : rb-20026688  
Percentile statistics : 20151230.v01 (using entries in the PDB archive December 30th 2015)  
Refmac : 5.8.0135  
CCP4 : 6.5.0  
Ideal geometry (proteins) : Engh & Huber (2001)  
Ideal geometry (DNA, RNA) : Parkinson et al. (1996)  
Validation Pipeline (wwPDB-VP) : trunk26865

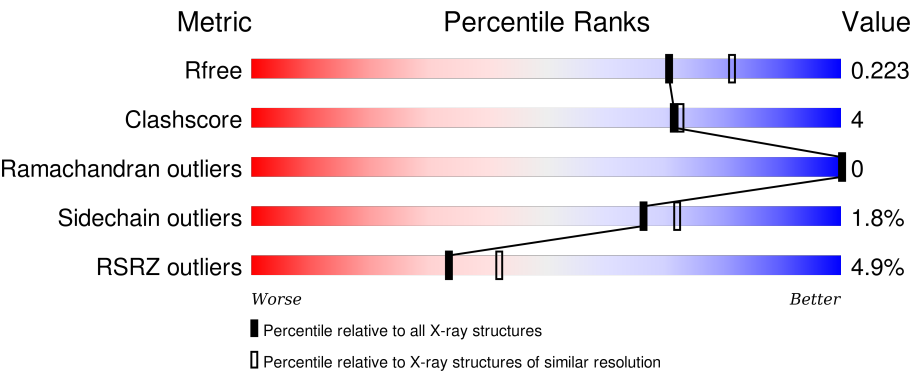
# 1 Overall quality at a glance i

The following experimental techniques were used to determine the structure:

*X-RAY DIFFRACTION*

The reported resolution of this entry is 2.10 Å.

Percentile scores (ranging between 0-100) for global validation metrics of the entry are shown in the following graphic. The table shows the number of entries on which the scores are based.



Metric	Whole archive (#Entries)	Similar resolution (#Entries, resolution range(Å))
R <sub>free</sub>	91344	3939 (2.10-2.10)
Clashscore	102246	4460 (2.10-2.10)
Ramachandran outliers	100387	4413 (2.10-2.10)
Sidechain outliers	100360	4414 (2.10-2.10)
RSRZ outliers	91569	3948 (2.10-2.10)

The table below summarises the geometric issues observed across the polymeric chains and their fit to the electron density. The red, orange, yellow and green segments on the lower bar indicate the fraction of residues that contain outliers for  $\geq 3$ , 2, 1 and 0 types of geometric quality criteria. A grey segment represents the fraction of residues that are not modelled. The numeric value for each fraction is indicated below the corresponding segment, with a dot representing fractions  $\leq 5\%$ . The upper red bar (where present) indicates the fraction of residues that have poor fit to the electron density. The numeric value is given above the bar.

Mol	Chain	Length	Quality of chain
1	A	82	<div><div>11%</div><div><div></div><div>94%</div><div>6%</div></div></div>
1	B	82	<div><div>7%</div><div><div></div><div>89%</div><div>11%</div></div></div>
1	C	82	<div><div>9%</div><div><div></div><div>91%</div><div>6% ..</div></div></div>
1	D	82	<div><div>5%</div><div><div></div><div>91%</div><div>7% .</div></div></div>
1	E	82	<div><div>4%</div><div><div></div><div>95%</div><div>5%</div></div></div>

Continued on next page...

*Continued from previous page...*

Mol	Chain	Length	Quality of chain
1	F	82	
1	G	82	
1	H	82	
1	I	82	
2	J	182	

The following table lists non-polymeric compounds, carbohydrate monomers and non-standard residues in protein, DNA, RNA chains that are outliers for geometric or electron-density-fit criteria:

Mol	Type	Chain	Res	Chirality	Geometry	Clashes	Electron density
4	HTG	E	1084	-	-	-	X
4	HTG	F	1083	-	-	-	X
4	HTG	G	1084	-	-	-	X
4	HTG	G	1085	-	-	-	X
4	HTG	G	1086	-	-	-	X
4	HTG	I	1087	-	-	-	X
4	HTG	I	1088	-	-	-	X
4	HTG	J	1183	-	-	-	X
4	HTG	J	1184	-	-	-	X
4	HTG	J	1185	-	-	-	X
4	HTG	J	1186	-	-	-	X
4	HTG	J	1187	-	-	-	X
4	HTG	J	1188	-	-	-	X
6	TAM	C	1084	-	-	-	X
7	P6G	E	1083	-	-	-	X
8	ACT	I	1083	-	-	-	X
8	ACT	I	1084	-	-	-	X

## 2 Entry composition

There are 9 unique types of molecules in this entry. The entry contains 7053 atoms, of which 0 are hydrogens and 0 are deuteriums.

In the tables below, the ZeroOcc column contains the number of atoms modelled with zero occupancy, the AltConf column contains the number of residues with at least one atom in alternate conformation and the Trace column contains the number of residues modelled with at most 2 atoms.

- Molecule 1 is a protein called F1FO ATPASE C2 SUBUNIT.

Mol	Chain	Residues	Atoms					ZeroOcc	AltConf	Trace
1	A	82	Total	C	N	O	S	0	0	0
			576	372	94	106	4			
1	B	82	Total	C	N	O	S	0	0	0
			576	372	94	106	4			
1	C	82	Total	C	N	O	S	0	0	0
			576	372	94	106	4			
1	D	82	Total	C	N	O	S	0	0	0
			576	372	94	106	4			
1	E	82	Total	C	N	O	S	0	0	0
			576	372	94	106	4			
1	F	82	Total	C	N	O	S	0	0	0
			576	372	94	106	4			
1	G	82	Total	C	N	O	S	0	0	0
			576	372	94	106	4			
1	H	82	Total	C	N	O	S	0	0	0
			576	372	94	106	4			
1	I	82	Total	C	N	O	S	0	0	0
			576	372	94	106	4			

- Molecule 2 is a protein called F1FO ATPASE C1 SUBUNIT.

Mol	Chain	Residues	Atoms					ZeroOcc	AltConf	Trace
2	J	182	Total	C	N	O	S	0	0	0
			1290	840	206	234	10			

- Molecule 3 is SODIUM ION (three-letter code: NA) (formula: Na).

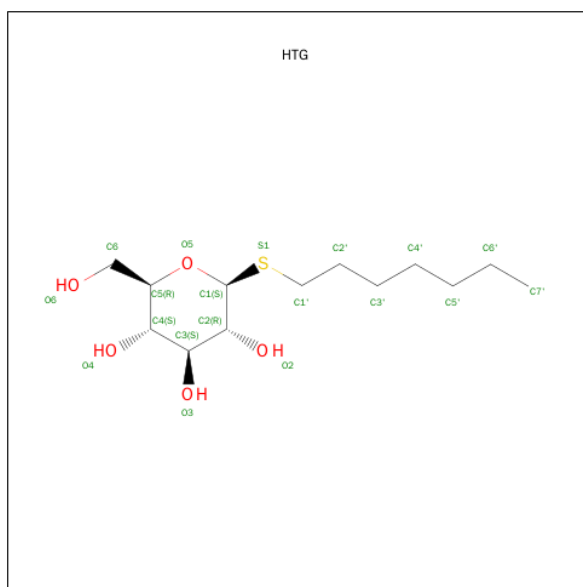
Mol	Chain	Residues	Atoms		ZeroOcc	AltConf
3	G	1	Total	Na	0	0
			1	1		
3	J	1	Total	Na	0	0
			1	1		

*Continued on next page...*

Continued from previous page...

Mol	Chain	Residues	Atoms		ZeroOcc	AltConf
3	D	1	Total	Na	0	0
			1	1		
3	E	1	Total	Na	0	0
			1	1		
3	H	1	Total	Na	0	0
			1	1		
3	B	1	Total	Na	0	0
			1	1		
3	I	1	Total	Na	0	0
			1	1		
3	C	1	Total	Na	0	0
			1	1		
3	A	1	Total	Na	0	0
			1	1		
3	F	1	Total	Na	0	0
			1	1		

- Molecule 4 is HEPTYL 1-THIOHEXOPYRANOSIDE (three-letter code: HTG) (formula:  $C_{13}H_{26}O_5S$ ).



Mol	Chain	Residues	Atoms				ZeroOcc	AltConf
4	B	1	Total	C	O	S	0	0
			19	13	5	1		
4	E	1	Total	C	O	S	0	0
			19	13	5	1		
4	E	1	Total	C	O	S	0	0
			19	13	5	1		

Continued on next page...

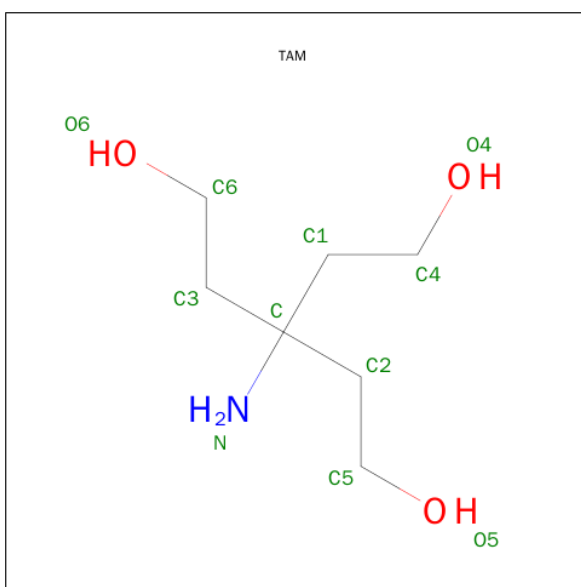
*Continued from previous page...*

Mol	Chain	Residues	Atoms				ZeroOcc	AltConf
4	F	1	Total	C	O	S	0	0
			19	13	5	1		
4	G	1	Total	C	O	S	0	0
			19	13	5	1		
4	G	1	Total	C	O	S	0	0
			19	13	5	1		
4	G	1	Total	C	O	S	0	0
			19	13	5	1		
4	H	1	Total	C	O	S	0	0
			19	13	5	1		
4	H	1	Total	C	O	S	0	0
			19	13	5	1		
4	I	1	Total	C	O	S	0	0
			19	13	5	1		
4	I	1	Total	C	O	S	0	0
			19	13	5	1		
4	I	1	Total	C	O	S	0	0
			19	13	5	1		
4	I	1	Total	C	O	S	0	0
			19	13	5	1		
4	J	1	Total	C	O	S	0	0
			19	13	5	1		
4	J	1	Total	C	O	S	0	0
			19	13	5	1		
4	J	1	Total	C	O	S	0	0
			19	13	5	1		
4	J	1	Total	C	O	S	0	0
			19	13	5	1		
4	J	1	Total	C	O	S	0	0
			19	13	5	1		

- Molecule 5 is MANGANESE (II) ION (three-letter code: MN) (formula: Mn).

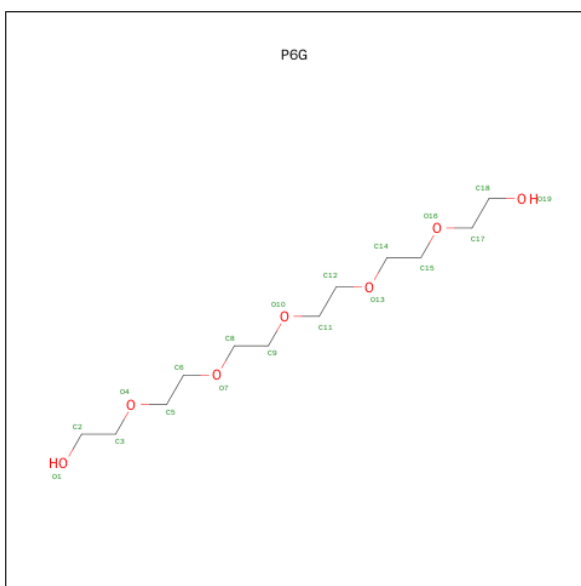
Mol	Chain	Residues	Atoms		ZeroOcc	AltConf
5	C	1	Total	Mn	0	0
			1	1		

- Molecule 6 is TRIS(HYDROXYETHYL)AMINOMETHANE (three-letter code: TAM) (formula: C<sub>7</sub>H<sub>17</sub>NO<sub>3</sub>).



Mol	Chain	Residues	Atoms				ZeroOcc	AltConf
6	C	1	Total	C	N	O	0	0
			11	7	1	3		

- Molecule 7 is HEXAETHYLENE GLYCOL (three-letter code: P6G) (formula:  $C_{12}H_{26}O_7$ ).



Mol	Chain	Residues	Atoms			ZeroOcc	AltConf
7	E	1	Total	C	O	0	0
			16	10	6		

- Molecule 8 is ACETATE ION (three-letter code: ACT) (formula:  $C_2H_3O_2$ ).



Mol	Chain	Residues	Atoms			ZeroOcc	AltConf
8	F	1	Total	C	O	0	0
			4	2	2		
8	G	1	Total	C	O	0	0
			4	2	2		
8	I	1	Total	C	O	0	0
			4	2	2		
8	I	1	Total	C	O	0	0
			4	2	2		

- Molecule 9 is water.

Mol	Chain	Residues	Atoms		ZeroOcc	AltConf
9	A	20	Total	O	0	0
			20	20		
9	B	12	Total	O	0	0
			12	12		
9	C	10	Total	O	0	0
			10	10		
9	D	12	Total	O	0	0
			12	12		
9	E	14	Total	O	0	0
			14	14		
9	F	12	Total	O	0	0
			12	12		
9	G	16	Total	O	0	0
			16	16		
9	H	20	Total	O	0	0
			20	20		

*Continued on next page...*



*Continued from previous page...*

Mol	Chain	Residues	Atoms		ZeroOcc	AltConf
9	I	14	Total	O	0	0
			14	14		
9	J	34	Total	O	0	0
			34	34		

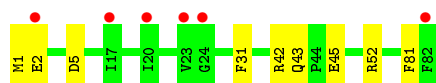
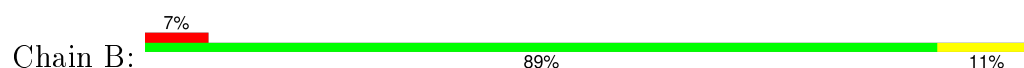
### 3 Residue-property plots [i](#)

These plots are drawn for all protein, RNA and DNA chains in the entry. The first graphic for a chain summarises the proportions of errors displayed in the second graphic. The second graphic shows the sequence view annotated by issues in geometry and electron density. Residues are color-coded according to the number of geometric quality criteria for which they contain at least one outlier: green = 0, yellow = 1, orange = 2 and red = 3 or more. A red dot above a residue indicates a poor fit to the electron density (RSRZ > 2). Stretches of 2 or more consecutive residues without any outlier are shown as a green connector. Residues present in the sample, but not in the model, are shown in grey.

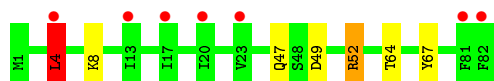
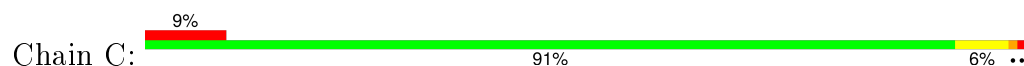
- Molecule 1: F1FO ATPASE C2 SUBUNIT



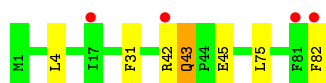
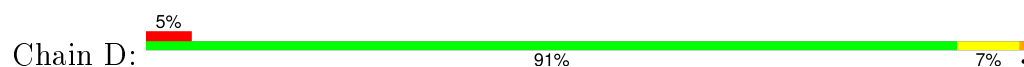
- Molecule 1: F1FO ATPASE C2 SUBUNIT



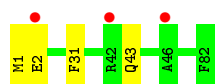
- Molecule 1: F1FO ATPASE C2 SUBUNIT



- Molecule 1: F1FO ATPASE C2 SUBUNIT

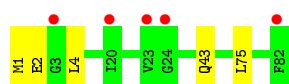


- Molecule 1: F1FO ATPASE C2 SUBUNIT

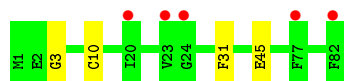


- Molecule 1: F1FO ATPASE C2 SUBUNIT

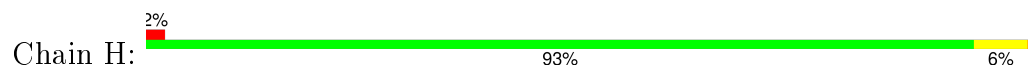




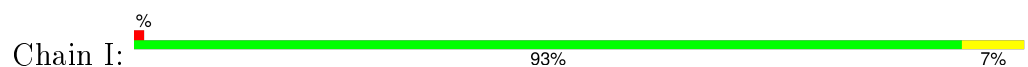
- Molecule 1: F1FO ATPASE C2 SUBUNIT



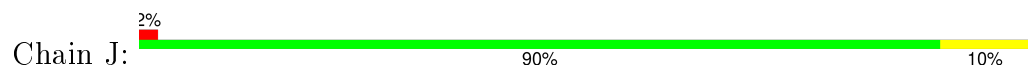
- Molecule 1: F1FO ATPASE C2 SUBUNIT



- Molecule 1: F1FO ATPASE C2 SUBUNIT



- Molecule 2: F1FO ATPASE C1 SUBUNIT



## 4 Data and refinement statistics

Property	Value	Source
Space group	P 43 21 2	Depositor
Cell constants a, b, c, $\alpha$ , $\beta$ , $\gamma$	121.17Å 121.17Å 150.57Å 90.00° 90.00° 90.00°	Depositor
Resolution (Å)	47.20 – 2.10 47.20 – 2.10	Depositor EDS
% Data completeness (in resolution range)	99.2 (47.20-2.10) 99.3 (47.20-2.10)	Depositor EDS
$R_{merge}$	0.14	Depositor
$R_{sym}$	(Not available)	Depositor
$\langle I/\sigma(I) \rangle$ <sup>1</sup>	1.80 (at 2.10Å)	Xtriage
Refinement program	PHENIX (PHENIX.REFINE)	Depositor
R, $R_{free}$	0.182 , 0.220 0.188 , 0.223	Depositor DCC
$R_{free}$ test set	3270 reflections (5.26%)	DCC
Wilson B-factor (Å <sup>2</sup> )	37.2	Xtriage
Anisotropy	0.048	Xtriage
Bulk solvent $k_{sol}$ (e/Å <sup>3</sup> ), $B_{sol}$ (Å <sup>2</sup> )	0.34 , 73.2	EDS
Estimated twinning fraction	No twinning to report.	Xtriage
L-test for twinning <sup>2</sup>	$\langle  L  \rangle = 0.51$ , $\langle L^2 \rangle = 0.34$	Xtriage
Outliers	7 of 65395 reflections (0.011%)	Xtriage
$F_o, F_c$ correlation	0.95	EDS
Total number of atoms	7053	wwPDB-VP
Average B, all atoms (Å <sup>2</sup> )	58.0	wwPDB-VP

Xtriage's analysis on translational NCS is as follows: *The largest off-origin peak in the Patterson function is 6.97% of the height of the origin peak. No significant pseudotranslation is detected.*

<sup>1</sup>Intensities estimated from amplitudes.

<sup>2</sup>Theoretical values of  $\langle |L| \rangle$ ,  $\langle L^2 \rangle$  for acentric reflections are 0.5, 0.375 respectively for untwinned datasets, and 0.333, 0.2 for perfectly twinned datasets.

## 5 Model quality

### 5.1 Standard geometry

Bond lengths and bond angles in the following residue types are not validated in this section: HTG, NA, MN, P6G, ACT, TAM, FME

The Z score for a bond length (or angle) is the number of standard deviations the observed value is removed from the expected value. A bond length (or angle) with  $|Z| > 5$  is considered an outlier worth inspection. RMSZ is the root-mean-square of all Z scores of the bond lengths (or angles).

Mol	Chain	Bond lengths		Bond angles	
		RMSZ	# $ Z  > 5$	RMSZ	# $ Z  > 5$
1	A	0.36	0/574	0.48	0/774
1	B	0.34	0/574	0.45	0/774
1	C	0.34	0/574	0.51	1/774 (0.1%)
1	D	0.31	0/574	0.46	0/774
1	E	0.34	0/574	0.48	0/774
1	F	0.36	0/574	0.48	0/774
1	G	0.38	0/574	0.49	0/774
1	H	0.40	0/574	0.49	0/774
1	I	0.39	0/574	0.46	0/774
2	J	0.38	0/1300	0.46	0/1761
All	All	0.36	0/6466	0.47	1/8727 (0.0%)

There are no bond length outliers.

All (1) bond angle outliers are listed below:

Mol	Chain	Res	Type	Atoms	Z	Observed(°)	Ideal(°)
1	C	4	LEU	CA-CB-CG	5.46	127.87	115.30

There are no chirality outliers.

There are no planarity outliers.

### 5.2 Too-close contacts

In the following table, the Non-H and H(model) columns list the number of non-hydrogen atoms and hydrogen atoms in the chain respectively. The H(added) column lists the number of hydrogen atoms added and optimized by MolProbity. The Clashes column lists the number of clashes within the asymmetric unit, whereas Symm-Clashes lists symmetry related clashes.

Mol	Chain	Non-H	H(model)	H(added)	Clashes	Symm-Clashes
1	A	576	0	592	5	0
1	B	576	0	592	9	0
1	C	576	0	592	6	0
1	D	576	0	592	10	0
1	E	576	0	592	5	0
1	F	576	0	592	4	0
1	G	576	0	592	4	0
1	H	576	0	592	6	0
1	I	576	0	592	4	0
2	J	1290	0	1353	16	0
3	A	1	0	0	0	0
3	B	1	0	0	0	0
3	C	1	0	0	0	0
3	D	1	0	0	0	0
3	E	1	0	0	0	0
3	F	1	0	0	0	0
3	G	1	0	0	0	0
3	H	1	0	0	0	0
3	I	1	0	0	0	0
3	J	1	0	0	0	0
4	B	19	0	26	0	0
4	E	38	0	52	0	0
4	F	19	0	26	0	0
4	G	57	0	78	2	0
4	H	38	0	52	4	0
4	I	76	0	104	6	0
4	J	114	0	156	5	0
5	C	1	0	0	0	0
6	C	11	0	17	2	0
7	E	16	0	21	4	0
8	F	4	0	3	0	0
8	G	4	0	3	0	0
8	I	8	0	6	0	0
9	A	20	0	0	0	0
9	B	12	0	0	0	1
9	C	10	0	0	1	0
9	D	12	0	0	3	0
9	E	14	0	0	0	0
9	F	12	0	0	0	0
9	G	16	0	0	0	0
9	H	20	0	0	1	0
9	I	14	0	0	0	0
9	J	34	0	0	2	0

Continued on next page...

*Continued from previous page...*

Mol	Chain	Non-H	H(model)	H(added)	Clashes	Symm-Clashes
All	All	7053	0	7225	60	1

The all-atom clashscore is defined as the number of clashes found per 1000 atoms (including hydrogen atoms). The all-atom clashscore for this structure is 4.

All (60) close contacts within the same asymmetric unit are listed below, sorted by their clash magnitude.

Atom-1	Atom-2	Interatomic distance (Å)	Clash overlap (Å)
1:D:43:GLN:HB3	7:E:1083:P6G:H141	1.63	0.79
1:B:43:GLN:NE2	1:B:45:GLU:OE2	2.11	0.79
1:A:40:VAL:HG21	2:J:153:VAL:HG21	1.66	0.76
4:H:1084:HTG:S1	4:I:1085:HTG:O2	2.43	0.75
1:D:45:GLU:OE2	9:D:2006:HOH:O	2.13	0.66
2:J:18:PHE:O	9:J:2001:HOH:O	2.14	0.66
1:D:45:GLU:OE1	7:E:1083:P6G:O16	2.13	0.65
4:J:1184:HTG:H4'1	4:J:1186:HTG:H3'1	1.76	0.65
1:B:45:GLU:OE1	1:B:45:GLU:N	2.19	0.62
1:A:42:ARG:NH2	1:B:42:ARG:HA	2.15	0.61
1:D:42:ARG:NH2	7:E:1083:P6G:O10	2.34	0.61
2:J:87:VAL:HG11	4:J:1187:HTG:H5'2	1.83	0.60
1:C:49:ASP:OD1	6:C:1084:TAM:H12	2.02	0.59
1:E:2:GLU:HG3	1:F:1:FME:HA	1.84	0.58
1:C:4:LEU:HD13	1:C:8:LYS:HE3	1.85	0.57
1:B:52:ARG:NH2	1:C:47:GLN:OE1	2.37	0.57
4:I:1085:HTG:H6'2	4:I:1086:HTG:H3'1	1.87	0.57
1:E:2:GLU:HB2	1:F:1:FME:HCN	1.88	0.54
1:H:78:ALA:HB1	4:H:1084:HTG:H5	1.90	0.54
1:G:45:GLU:CD	1:G:45:GLU:H	2.09	0.54
4:H:1084:HTG:H2'2	4:I:1085:HTG:H2'2	1.89	0.53
2:J:73:LEU:HD11	4:J:1183:HTG:H5	1.94	0.50
2:J:63:LYS:HD3	2:J:144:PRO:HG3	1.94	0.50
1:F:2:GLU:HG3	1:F:4:LEU:H	1.78	0.49
1:G:3:GLY:HA3	1:H:5:ASP:OD2	2.12	0.49
1:E:2:GLU:CB	1:F:1:FME:HCN	2.42	0.49
2:J:59:LYS:NZ	9:J:2011:HOH:O	2.46	0.48
2:J:10:PHE:HE2	4:J:1188:HTG:H2'1	1.78	0.48
1:I:78:ALA:HB2	4:I:1086:HTG:H1'2	1.96	0.47
1:C:64:THR:HA	1:C:67:TYR:CD2	2.50	0.47
4:J:1183:HTG:H2'2	4:J:1183:HTG:H1	1.83	0.47
1:A:27:ILE:HG13	2:J:124:GLY:HA2	1.97	0.46
6:C:1084:TAM:HN2	6:C:1084:TAM:H62	1.63	0.46

*Continued on next page...*

Continued from previous page...

Atom-1	Atom-2	Interatomic distance (Å)	Clash overlap (Å)
4:I:1088:HTG:H3	2:J:68:VAL:HG11	1.98	0.46
1:D:45:GLU:HG2	9:D:2007:HOH:O	2.16	0.46
1:B:81:PHE:HB3	1:C:8:LYS:HD3	1.97	0.46
2:J:60:ASN:HB3	2:J:63:LYS:HD2	1.98	0.46
1:B:1:FME:HB3	2:J:9:ASP:OD1	2.16	0.46
1:D:4:LEU:HD11	1:D:82:PHE:HB3	1.98	0.45
1:G:31:PHE:CD2	1:H:31:PHE:HA	2.52	0.45
1:A:31:PHE:CD2	1:B:31:PHE:HA	2.52	0.44
1:H:45:GLU:HB3	9:H:2010:HOH:O	2.16	0.44
1:G:10:CYS:SG	1:H:9:ALA:HB1	2.57	0.44
1:D:43:GLN:HA	7:E:1083:P6G:H152	1.99	0.44
2:J:179:ASN:HB3	2:J:182:LEU:HG	2.00	0.44
2:J:143:ARG:HH11	2:J:143:ARG:HG2	1.82	0.44
1:A:3:GLY:HA3	1:B:5:ASP:OD2	2.17	0.44
1:D:45:GLU:H	1:D:45:GLU:CD	2.21	0.44
1:E:1:FME:HB2	1:E:2:GLU:H	1.55	0.44
1:D:31:PHE:CD2	1:E:31:PHE:HA	2.53	0.44
1:B:2:GLU:CD	1:B:2:GLU:H	2.17	0.44
1:D:43:GLN:NE2	9:D:2004:HOH:O	2.36	0.43
1:I:70:ILE:HG23	4:I:1086:HTG:H6'2	2.01	0.43
2:J:5:MET:HG3	2:J:5:MET:H	1.66	0.42
1:C:52:ARG:HB2	9:C:2008:HOH:O	2.18	0.42
4:G:1084:HTG:H1'2	4:G:1084:HTG:H4'2	1.84	0.41
4:G:1084:HTG:H1	4:H:1083:HTG:O4	2.20	0.41
1:I:31:PHE:CD2	2:J:48:PHE:HA	2.56	0.41
2:J:1:FME:HB3	2:J:1:FME:HCN	1.51	0.40
1:H:3:GLY:HA3	1:I:5:ASP:OD2	2.22	0.40

All (1) symmetry-related close contacts are listed below. The label for Atom-2 includes the symmetry operator and encoded unit-cell translations to be applied.

Atom-1	Atom-2	Interatomic distance (Å)	Clash overlap (Å)
9:B:2006:HOH:O	9:B:2006:HOH:O[8_555]	2.06	0.14

## 5.3 Torsion angles

### 5.3.1 Protein backbone

In the following table, the Percentiles column shows the percent Ramachandran outliers of the chain as a percentile score with respect to all X-ray entries followed by that with respect to entries



of similar resolution.

The Analysed column shows the number of residues for which the backbone conformation was analysed, and the total number of residues.

Mol	Chain	Analysed	Favoured	Allowed	Outliers	Percentiles	
1	A	80/82 (98%)	79 (99%)	1 (1%)	0	100	100
1	B	80/82 (98%)	79 (99%)	1 (1%)	0	100	100
1	C	80/82 (98%)	79 (99%)	1 (1%)	0	100	100
1	D	80/82 (98%)	79 (99%)	1 (1%)	0	100	100
1	E	80/82 (98%)	78 (98%)	2 (2%)	0	100	100
1	F	80/82 (98%)	79 (99%)	1 (1%)	0	100	100
1	G	80/82 (98%)	79 (99%)	1 (1%)	0	100	100
1	H	80/82 (98%)	79 (99%)	1 (1%)	0	100	100
1	I	80/82 (98%)	79 (99%)	1 (1%)	0	100	100
2	J	180/182 (99%)	175 (97%)	5 (3%)	0	100	100
All	All	900/920 (98%)	885 (98%)	15 (2%)	0	100	100

There are no Ramachandran outliers to report.

### 5.3.2 Protein sidechains ⓘ

In the following table, the Percentiles column shows the percent sidechain outliers of the chain as a percentile score with respect to all X-ray entries followed by that with respect to entries of similar resolution.

The Analysed column shows the number of residues for which the sidechain conformation was analysed, and the total number of residues.

Mol	Chain	Analysed	Rotameric	Outliers	Percentiles	
1	A	52/52 (100%)	52 (100%)	0	100	100
1	B	52/52 (100%)	52 (100%)	0	100	100
1	C	52/52 (100%)	50 (96%)	2 (4%)	40	40
1	D	52/52 (100%)	50 (96%)	2 (4%)	40	40
1	E	52/52 (100%)	51 (98%)	1 (2%)	65	70
1	F	52/52 (100%)	50 (96%)	2 (4%)	40	40
1	G	52/52 (100%)	52 (100%)	0	100	100
1	H	52/52 (100%)	51 (98%)	1 (2%)	65	70

*Continued on next page...*

*Continued from previous page...*

Mol	Chain	Analysed	Rotameric	Outliers	Percentiles	
1	I	52/52 (100%)	50 (96%)	2 (4%)	40	40
2	J	128/128 (100%)	127 (99%)	1 (1%)	86	91
All	All	596/596 (100%)	585 (98%)	11 (2%)	66	72

All (11) residues with a non-rotameric sidechain are listed below:

Mol	Chain	Res	Type
1	C	4	LEU
1	C	52	ARG
1	D	43	GLN
1	D	75	LEU
1	E	43	GLN
1	F	43	GLN
1	F	75	LEU
1	H	45	GLU
1	I	4	LEU
1	I	42	ARG
2	J	69	MET

Some sidechains can be flipped to improve hydrogen bonding and reduce clashes. All (2) such sidechains are listed below:

Mol	Chain	Res	Type
1	D	47	GLN
1	H	47	GLN

### 5.3.3 RNA ⓘ

There are no RNA molecules in this entry.

## 5.4 Non-standard residues in protein, DNA, RNA chains ⓘ

10 non-standard protein/DNA/RNA residues are modelled in this entry.

In the following table, the Counts columns list the number of bonds (or angles) for which Mogul statistics could be retrieved, the number of bonds (or angles) that are observed in the model and the number of bonds (or angles) that are defined in the chemical component dictionary. The Link column lists molecule types, if any, to which the group is linked. The Z score for a bond length (or angle) is the number of standard deviations the observed value is removed from the expected value. A bond length (or angle) with  $|Z| > 2$  is considered an outlier worth inspection. RMSZ is the root-mean-square of all Z scores of the bond lengths (or angles).

Mol	Type	Chain	Res	Link	Bond lengths			Bond angles		
					Counts	RMSZ	# Z  > 2	Counts	RMSZ	# Z  > 2
1	FME	A	1	1	8,9,10	0.65	0	6,9,11	4.06	3 (50%)
1	FME	B	1	1	8,9,10	0.65	0	6,9,11	4.45	3 (50%)
1	FME	C	1	1	8,9,10	0.64	0	6,9,11	4.34	3 (50%)
1	FME	D	1	1,5	8,9,10	0.62	0	6,9,11	4.33	3 (50%)
1	FME	E	1	1	8,9,10	0.62	0	6,9,11	4.19	3 (50%)
1	FME	F	1	1	8,9,10	0.65	0	6,9,11	3.82	3 (50%)
1	FME	G	1	1	8,9,10	0.66	0	6,9,11	4.09	3 (50%)
1	FME	H	1	1	8,9,10	0.69	0	6,9,11	4.71	3 (50%)
1	FME	I	1	1	8,9,10	0.63	0	6,9,11	4.50	3 (50%)
2	FME	J	1	2	8,9,10	0.70	0	6,9,11	3.54	3 (50%)

In the following table, the Chirals column lists the number of chiral outliers, the number of chiral centers analysed, the number of these observed in the model and the number defined in the chemical component dictionary. Similar counts are reported in the Torsion and Rings columns. '-' means no outliers of that kind were identified.

Mol	Type	Chain	Res	Link	Chirals	Torsions	Rings
1	FME	A	1	1	-	1/6/9/11	0/0/0/0
1	FME	B	1	1	-	1/6/9/11	0/0/0/0
1	FME	C	1	1	-	1/6/9/11	0/0/0/0
1	FME	D	1	1,5	-	1/6/9/11	0/0/0/0
1	FME	E	1	1	-	1/6/9/11	0/0/0/0
1	FME	F	1	1	-	1/6/9/11	0/0/0/0
1	FME	G	1	1	-	1/6/9/11	0/0/0/0
1	FME	H	1	1	-	1/6/9/11	0/0/0/0
1	FME	I	1	1	-	1/6/9/11	0/0/0/0
2	FME	J	1	2	-	1/6/9/11	0/0/0/0

There are no bond length outliers.

All (30) bond angle outliers are listed below:

Mol	Chain	Res	Type	Atoms	Z	Observed(°)	Ideal(°)
1	H	1	FME	CA-N-CN	-10.67	106.41	122.82
1	I	1	FME	CA-N-CN	-10.02	107.41	122.82
1	B	1	FME	CA-N-CN	-9.59	108.08	122.82
1	D	1	FME	CA-N-CN	-9.39	108.38	122.82
1	C	1	FME	CA-N-CN	-9.28	108.55	122.82
1	G	1	FME	CA-N-CN	-9.04	108.92	122.82
1	E	1	FME	CA-N-CN	-9.00	108.99	122.82

*Continued on next page...*

*Continued from previous page...*

Mol	Chain	Res	Type	Atoms	Z	Observed(°)	Ideal(°)
1	A	1	FME	CA-N-CN	-8.94	109.08	122.82
1	F	1	FME	CA-N-CN	-8.51	109.74	122.82
2	J	1	FME	CA-N-CN	-7.48	111.32	122.82
1	C	1	FME	O1-CN-N	-4.11	118.84	124.76
1	D	1	FME	O1-CN-N	-3.89	119.15	124.76
1	B	1	FME	O1-CN-N	-3.72	119.40	124.76
1	E	1	FME	O1-CN-N	-3.59	119.58	124.76
1	I	1	FME	O1-CN-N	-3.44	119.81	124.76
1	A	1	FME	O1-CN-N	-3.20	120.16	124.76
2	J	1	FME	O1-CN-N	-2.90	120.58	124.76
1	G	1	FME	O1-CN-N	-2.76	120.78	124.76
1	H	1	FME	O-C-CA	-2.72	118.25	125.44
1	F	1	FME	O1-CN-N	-2.71	120.86	124.76
1	F	1	FME	CE-SD-CG	2.03	107.30	100.37
1	I	1	FME	CE-SD-CG	2.09	107.51	100.37
1	D	1	FME	CE-SD-CG	2.27	108.10	100.37
1	C	1	FME	CE-SD-CG	2.31	108.27	100.37
1	A	1	FME	CE-SD-CG	2.41	108.59	100.37
2	J	1	FME	CE-SD-CG	2.52	108.97	100.37
1	H	1	FME	CE-SD-CG	2.59	109.19	100.37
1	G	1	FME	CE-SD-CG	2.71	109.63	100.37
1	B	1	FME	CE-SD-CG	2.77	109.83	100.37
1	E	1	FME	CE-SD-CG	2.81	109.95	100.37

There are no chirality outliers.

All (10) torsion outliers are listed below:

Mol	Chain	Res	Type	Atoms
1	C	1	FME	O1-CN-N-CA
1	I	1	FME	O1-CN-N-CA
1	D	1	FME	O1-CN-N-CA
1	B	1	FME	O1-CN-N-CA
1	H	1	FME	O1-CN-N-CA
2	J	1	FME	O1-CN-N-CA
1	G	1	FME	O1-CN-N-CA
1	E	1	FME	O1-CN-N-CA
1	F	1	FME	O1-CN-N-CA
1	A	1	FME	O1-CN-N-CA

There are no ring outliers.

4 monomers are involved in 6 short contacts:

Mol	Chain	Res	Type	Clashes	Symm-Clashes
1	B	1	FME	1	0
1	E	1	FME	1	0
1	F	1	FME	3	0
2	J	1	FME	1	0

## 5.5 Carbohydrates [i](#)

There are no carbohydrates in this entry.

## 5.6 Ligand geometry [i](#)

Of 36 ligands modelled in this entry, 11 are monoatomic - leaving 25 for Mogul analysis.

In the following table, the Counts columns list the number of bonds (or angles) for which Mogul statistics could be retrieved, the number of bonds (or angles) that are observed in the model and the number of bonds (or angles) that are defined in the chemical component dictionary. The Link column lists molecule types, if any, to which the group is linked. The Z score for a bond length (or angle) is the number of standard deviations the observed value is removed from the expected value. A bond length (or angle) with  $|Z| > 2$  is considered an outlier worth inspection. RMSZ is the root-mean-square of all Z scores of the bond lengths (or angles).

Mol	Type	Chain	Res	Link	Bond lengths			Bond angles		
					Counts	RMSZ	$\# Z  > 2$	Counts	RMSZ	$\# Z  > 2$
4	HTG	B	1084	-	19,19,19	0.99	2 (10%)	22,24,24	0.70	0
6	TAM	C	1084	-	7,10,10	0.47	0	9,12,12	0.82	0
7	P6G	E	1083	-	15,15,18	0.41	0	14,14,17	0.70	0
4	HTG	E	1084	-	19,19,19	1.02	2 (10%)	22,24,24	1.25	3 (13%)
4	HTG	E	1085	-	19,19,19	1.00	2 (10%)	22,24,24	0.87	1 (4%)
4	HTG	F	1083	-	19,19,19	0.97	2 (10%)	22,24,24	0.93	0
8	ACT	F	1084	-	1,3,3	1.31	0	0,3,3	0.00	-
8	ACT	G	1083	-	1,3,3	1.44	0	0,3,3	0.00	-
4	HTG	G	1084	-	19,19,19	1.00	2 (10%)	22,24,24	0.56	0
4	HTG	G	1085	-	19,19,19	1.00	2 (10%)	22,24,24	1.12	3 (13%)
4	HTG	G	1086	-	19,19,19	0.99	1 (5%)	22,24,24	1.45	3 (13%)
4	HTG	H	1083	-	19,19,19	0.98	2 (10%)	22,24,24	0.62	0
4	HTG	H	1084	-	19,19,19	1.05	2 (10%)	22,24,24	1.62	3 (13%)
8	ACT	I	1083	-	1,3,3	1.64	0	0,3,3	0.00	-
8	ACT	I	1084	-	1,3,3	1.52	0	0,3,3	0.00	-
4	HTG	I	1085	-	19,19,19	1.04	2 (10%)	22,24,24	1.10	3 (13%)
4	HTG	I	1086	-	19,19,19	0.94	1 (5%)	22,24,24	0.58	0

Mol	Type	Chain	Res	Link	Bond lengths			Bond angles		
					Counts	RMSZ	# Z  > 2	Counts	RMSZ	# Z  > 2
4	HTG	I	1087	-	19,19,19	1.03	2 (10%)	22,24,24	0.68	0
4	HTG	I	1088	-	19,19,19	0.98	2 (10%)	22,24,24	0.59	0
4	HTG	J	1183	-	19,19,19	0.88	1 (5%)	22,24,24	1.42	3 (13%)
4	HTG	J	1184	-	19,19,19	1.04	1 (5%)	22,24,24	0.67	0
4	HTG	J	1185	-	19,19,19	0.94	2 (10%)	22,24,24	0.98	2 (9%)
4	HTG	J	1186	-	19,19,19	0.94	2 (10%)	22,24,24	0.69	0
4	HTG	J	1187	-	19,19,19	1.00	2 (10%)	22,24,24	0.48	0
4	HTG	J	1188	-	19,19,19	0.96	2 (10%)	22,24,24	0.83	0

In the following table, the Chirals column lists the number of chiral outliers, the number of chiral centers analysed, the number of these observed in the model and the number defined in the chemical component dictionary. Similar counts are reported in the Torsion and Rings columns. '-' means no outliers of that kind were identified.

Mol	Type	Chain	Res	Link	Chirals	Torsions	Rings
4	HTG	B	1084	-	-	0/10/30/30	0/1/1/1
6	TAM	C	1084	-	-	0/12/12/12	0/0/0/0
7	P6G	E	1083	-	-	0/13/13/16	0/0/0/0
4	HTG	E	1084	-	-	0/10/30/30	0/1/1/1
4	HTG	E	1085	-	-	0/10/30/30	0/1/1/1
4	HTG	F	1083	-	-	0/10/30/30	0/1/1/1
8	ACT	F	1084	-	-	0/0/0/0	0/0/0/0
8	ACT	G	1083	-	-	0/0/0/0	0/0/0/0
4	HTG	G	1084	-	-	0/10/30/30	0/1/1/1
4	HTG	G	1085	-	-	0/10/30/30	0/1/1/1
4	HTG	G	1086	-	-	0/10/30/30	0/1/1/1
4	HTG	H	1083	-	-	0/10/30/30	0/1/1/1
4	HTG	H	1084	-	-	0/10/30/30	0/1/1/1
8	ACT	I	1083	-	-	0/0/0/0	0/0/0/0
8	ACT	I	1084	-	-	0/0/0/0	0/0/0/0
4	HTG	I	1085	-	-	0/10/30/30	0/1/1/1
4	HTG	I	1086	-	-	0/10/30/30	0/1/1/1
4	HTG	I	1087	-	-	0/10/30/30	0/1/1/1
4	HTG	I	1088	-	-	0/10/30/30	0/1/1/1
4	HTG	J	1183	-	-	0/10/30/30	0/1/1/1
4	HTG	J	1184	-	-	0/10/30/30	0/1/1/1
4	HTG	J	1185	-	-	0/10/30/30	0/1/1/1
4	HTG	J	1186	-	-	0/10/30/30	0/1/1/1
4	HTG	J	1187	-	-	0/10/30/30	0/1/1/1
4	HTG	J	1188	-	-	0/10/30/30	0/1/1/1

All (34) bond length outliers are listed below:

Mol	Chain	Res	Type	Atoms	Z	Observed(Å)	Ideal(Å)
4	J	1184	HTG	C1'-S1	-3.93	1.76	1.81
4	I	1085	HTG	C1'-S1	-3.70	1.76	1.81
4	I	1087	HTG	C1'-S1	-3.60	1.76	1.81
4	J	1187	HTG	C1'-S1	-3.54	1.76	1.81
4	G	1084	HTG	C1'-S1	-3.52	1.76	1.81
4	H	1084	HTG	C1'-S1	-3.51	1.76	1.81
4	I	1088	HTG	C1'-S1	-3.49	1.76	1.81
4	E	1084	HTG	C1'-S1	-3.46	1.76	1.81
4	E	1085	HTG	C1'-S1	-3.45	1.76	1.81
4	G	1085	HTG	C1'-S1	-3.42	1.76	1.81
4	I	1086	HTG	C1'-S1	-3.40	1.76	1.81
4	J	1186	HTG	C1'-S1	-3.40	1.76	1.81
4	H	1083	HTG	C1'-S1	-3.39	1.76	1.81
4	J	1188	HTG	C1'-S1	-3.37	1.76	1.81
4	F	1083	HTG	C1'-S1	-3.37	1.76	1.81
4	G	1086	HTG	C1'-S1	-3.34	1.76	1.81
4	B	1084	HTG	C1'-S1	-3.32	1.76	1.81
4	J	1185	HTG	C1'-S1	-3.25	1.76	1.81
4	J	1183	HTG	C1'-S1	-2.96	1.77	1.81
4	H	1084	HTG	C1-S1	-2.57	1.76	1.80
4	B	1084	HTG	C1-S1	-2.43	1.76	1.80
4	I	1087	HTG	C1-S1	-2.42	1.76	1.80
4	E	1084	HTG	C1-S1	-2.39	1.76	1.80
4	G	1085	HTG	C1-S1	-2.36	1.76	1.80
4	H	1083	HTG	C1-S1	-2.33	1.76	1.80
4	G	1084	HTG	C1-S1	-2.32	1.76	1.80
4	E	1085	HTG	C1-S1	-2.28	1.77	1.80
4	I	1085	HTG	C1-S1	-2.26	1.77	1.80
4	J	1187	HTG	C1-S1	-2.23	1.77	1.80
4	F	1083	HTG	C1-S1	-2.21	1.77	1.80
4	J	1188	HTG	C1-S1	-2.17	1.77	1.80
4	I	1088	HTG	C1-S1	-2.09	1.77	1.80
4	J	1185	HTG	C1-S1	-2.06	1.77	1.80
4	J	1186	HTG	C1-S1	-2.01	1.77	1.80

All (21) bond angle outliers are listed below:

Mol	Chain	Res	Type	Atoms	Z	Observed(°)	Ideal(°)
4	H	1084	HTG	C1'-S1-C1	-4.37	94.28	100.30
4	J	1183	HTG	O5-C1-C2	-3.73	105.13	110.19
4	H	1084	HTG	C1-C2-C3	-3.64	102.63	110.69
4	E	1084	HTG	O5-C1-C2	-3.24	105.79	110.19

*Continued on next page...*

*Continued from previous page...*

Mol	Chain	Res	Type	Atoms	Z	Observed(°)	Ideal(°)
4	G	1085	HTG	C1'-S1-C1	-3.20	95.89	100.30
4	G	1085	HTG	O5-C1-C2	-2.32	107.04	110.19
4	H	1084	HTG	O5-C1-C2	-2.17	107.24	110.19
4	J	1185	HTG	C3-C4-C5	-2.14	106.46	110.20
4	I	1085	HTG	C1-O5-C5	2.00	116.56	112.74
4	J	1185	HTG	O5-C1-C2	2.09	113.03	110.19
4	G	1085	HTG	C3-C4-C5	2.11	113.88	110.20
4	E	1085	HTG	O5-C5-C6	2.17	111.84	106.36
4	G	1086	HTG	C1-O5-C5	2.29	117.11	112.74
4	J	1183	HTG	C4-C3-C2	2.47	115.40	110.79
4	G	1086	HTG	C1-C2-C3	2.60	116.45	110.69
4	I	1085	HTG	C3-C4-C5	2.75	114.99	110.20
4	E	1084	HTG	O5-C5-C4	2.84	115.01	109.68
4	E	1084	HTG	C3-C4-C5	2.99	115.41	110.20
4	I	1085	HTG	O5-C5-C4	3.04	115.39	109.68
4	J	1183	HTG	C3-C4-C5	3.68	116.62	110.20
4	G	1086	HTG	O5-C1-C2	5.08	117.09	110.19

There are no chirality outliers.

There are no torsion outliers.

There are no ring outliers.

13 monomers are involved in 20 short contacts:

Mol	Chain	Res	Type	Clashes	Symm-Clashes
6	C	1084	TAM	2	0
7	E	1083	P6G	4	0
4	G	1084	HTG	2	0
4	H	1083	HTG	1	0
4	H	1084	HTG	3	0
4	I	1085	HTG	3	0
4	I	1086	HTG	3	0
4	I	1088	HTG	1	0
4	J	1183	HTG	2	0
4	J	1184	HTG	1	0
4	J	1186	HTG	1	0
4	J	1187	HTG	1	0
4	J	1188	HTG	1	0

## 5.7 Other polymers ⓘ

There are no such residues in this entry.



## 5.8 Polymer linkage issues ⓘ

There are no chain breaks in this entry.

## 6 Fit of model and data ⓘ

### 6.1 Protein, DNA and RNA chains ⓘ

In the following table, the column labelled ‘#RSRZ> 2’ contains the number (and percentage) of RSRZ outliers, followed by percent RSRZ outliers for the chain as percentile scores relative to all X-ray entries and entries of similar resolution. The OWAB column contains the minimum, median, 95<sup>th</sup> percentile and maximum values of the occupancy-weighted average B-factor per residue. The column labelled ‘Q< 0.9’ lists the number of (and percentage) of residues with an average occupancy less than 0.9.

Mol	Chain	Analysed	<RSRZ>	#RSRZ>2	OWAB(Å <sup>2</sup> )	Q<0.9
1	A	81/82 (98%)	0.45	9 (11%) 7 10	35, 52, 74, 106	0
1	B	81/82 (98%)	0.31	6 (7%) 17 24	36, 55, 78, 89	1 (1%)
1	C	81/82 (98%)	0.24	7 (8%) 13 18	36, 56, 82, 103	0
1	D	81/82 (98%)	0.23	4 (4%) 33 42	37, 56, 80, 99	0
1	E	81/82 (98%)	0.17	3 (3%) 45 54	36, 52, 81, 124	0
1	F	81/82 (98%)	0.10	5 (6%) 24 32	34, 47, 70, 87	0
1	G	81/82 (98%)	0.13	5 (6%) 24 32	32, 44, 69, 93	1 (1%)
1	H	81/82 (98%)	-0.05	2 (2%) 61 67	30, 42, 62, 79	0
1	I	81/82 (98%)	-0.16	1 (1%) 81 85	30, 41, 61, 72	0
2	J	181/182 (99%)	0.00	3 (1%) 73 78	31, 47, 85, 132	0
All	All	910/920 (98%)	0.13	45 (4%) 33 42	30, 49, 80, 132	2 (0%)

All (45) RSRZ outliers are listed below:

Mol	Chain	Res	Type	RSRZ
1	E	2	GLU	6.2
1	B	82	PHE	5.8
1	C	4	LEU	5.3
1	D	82	PHE	5.3
2	J	181	PHE	5.0
1	C	82	PHE	4.7
1	D	81	PHE	4.2
1	C	81	PHE	3.7
1	B	20	ILE	3.5
1	C	20	ILE	3.3
1	A	77	PHE	3.3
1	H	17	ILE	3.2
1	B	23	VAL	3.2

*Continued on next page...*

*Continued from previous page...*

Mol	Chain	Res	Type	RSRZ
1	A	81	PHE	3.2
1	A	20	ILE	3.2
1	G	82	PHE	3.2
1	A	3	GLY	3.1
1	C	17	ILE	3.1
1	F	20	ILE	3.0
2	J	102	THR	3.0
1	C	23	VAL	3.0
1	D	17	ILE	2.9
1	A	4	LEU	2.8
2	J	177	TYR	2.8
1	B	2	GLU	2.7
1	H	23	VAL	2.7
1	G	23	VAL	2.6
1	G	20	ILE	2.6
1	E	42	ARG	2.5
1	A	82	PHE	2.4
1	D	42	ARG	2.4
1	B	17	ILE	2.4
1	A	23	VAL	2.3
1	B	24	GLY	2.2
1	A	78	ALA	2.2
1	E	46	ALA	2.2
1	F	3	GLY	2.2
1	F	23	VAL	2.1
1	G	24	GLY	2.1
1	F	24	GLY	2.1
1	F	82	PHE	2.1
1	I	23	VAL	2.1
1	G	77	PHE	2.1
1	C	13	ILE	2.0
1	A	2	GLU	2.0

## 6.2 Non-standard residues in protein, DNA, RNA chains [i](#)

In the following table, the Atoms column lists the number of modelled atoms in the group and the number defined in the chemical component dictionary. LLDF column lists the quality of electron density of the group with respect to its neighbouring residues in protein, DNA or RNA chains. The B-factors column lists the minimum, median, 95<sup>th</sup> percentile and maximum values of B factors of atoms in the group. The column labelled 'Q < 0.9' lists the number of atoms with occupancy less than 0.9.

Mol	Type	Chain	Res	Atoms	RSCC	RSR	LLDF	B-factors( $\text{\AA}^2$ )	Q<0.9
1	FME	C	1	10/11	0.91	0.15	-	73,79,84,84	0
2	FME	J	1	10/11	0.80	0.15	-	87,101,110,137	0
1	FME	H	1	10/11	0.93	0.10	-	61,68,88,95	0
1	FME	E	1	10/11	-0.03	0.39	-	123,135,138,158	0
1	FME	A	1	10/11	0.86	0.27	-	76,107,120,169	0
1	FME	G	1	10/11	0.89	0.25	-	80,93,115,120	0
1	FME	I	1	10/11	0.87	0.17	-	50,70,78,122	0
1	FME	F	1	10/11	0.90	0.24	-	86,91,111,114	0
1	FME	D	1	10/11	0.91	0.16	-	70,96,107,119	0
1	FME	B	1	10/11	0.81	0.26	-	72,84,107,164	0

### 6.3 Carbohydrates [i](#)

There are no carbohydrates in this entry.

### 6.4 Ligands [i](#)

In the following table, the Atoms column lists the number of modelled atoms in the group and the number defined in the chemical component dictionary. LLDF column lists the quality of electron density of the group with respect to its neighbouring residues in protein, DNA or RNA chains. The B-factors column lists the minimum, median, 95<sup>th</sup> percentile and maximum values of B factors of atoms in the group. The column labelled 'Q< 0.9' lists the number of atoms with occupancy less than 0.9.

Mol	Type	Chain	Res	Atoms	RSCC	RSR	LLDF	B-factors( $\text{\AA}^2$ )	Q<0.9
4	HTG	E	1084	19/19	0.50	0.41	21.14	87,144,148,204	0
4	HTG	G	1086	19/19	0.67	0.71	15.32	85,128,132,186	0
4	HTG	G	1084	19/19	0.64	0.56	12.48	103,140,148,164	0
4	HTG	F	1083	19/19	0.77	0.35	11.35	80,114,128,193	0
4	HTG	J	1183	19/19	0.83	0.42	10.06	81,123,128,129	0
8	ACT	I	1083	4/4	0.56	0.38	9.43	75,85,87,87	0
4	HTG	J	1186	19/19	0.75	0.34	6.38	65,134,138,183	0
4	HTG	G	1085	19/19	0.62	0.40	6.32	84,132,141,185	0
8	ACT	I	1084	4/4	0.72	0.26	6.13	73,78,80,81	0
4	HTG	I	1087	19/19	0.70	0.55	5.99	87,130,145,196	0
4	HTG	J	1187	19/19	0.68	0.43	5.41	110,121,127,160	0
7	P6G	E	1083	16/19	0.68	0.53	5.04	74,105,116,117	0
4	HTG	I	1088	19/19	0.58	0.40	4.37	98,116,126,152	0
4	HTG	J	1188	19/19	0.71	0.30	3.89	94,124,134,165	0
6	TAM	C	1084	11/11	0.69	0.27	3.51	99,103,107,107	0
4	HTG	J	1185	19/19	0.63	0.20	2.91	74,131,143,178	0

*Continued on next page...*

*Continued from previous page...*

Mol	Type	Chain	Res	Atoms	RSCC	RSR	LLDF	B-factors( $\text{\AA}^2$ )	Q<0.9
4	HTG	J	1184	19/19	0.91	0.21	2.75	56,67,82,84	0
5	MN	C	1083	1/1	0.18	0.25	1.99	213,213,213,213	0
4	HTG	E	1085	19/19	0.67	0.30	1.09	94,124,140,202	0
3	NA	C	201	1/1	0.99	0.09	0.01	48,48,48,48	0
3	NA	I	201	1/1	0.99	0.08	-0.37	39,39,39,39	0
3	NA	J	201	1/1	0.99	0.08	-1.09	38,38,38,38	0
3	NA	A	201	1/1	0.97	0.07	-2.09	45,45,45,45	0
3	NA	F	201	1/1	0.95	0.07	-2.10	43,43,43,43	0
3	NA	H	201	1/1	0.94	0.07	-2.12	38,38,38,38	0
3	NA	B	201	1/1	0.97	0.05	-2.16	52,52,52,52	0
3	NA	D	201	1/1	0.99	0.05	-2.44	52,52,52,52	0
3	NA	G	201	1/1	0.97	0.06	-2.74	38,38,38,38	0
3	NA	E	201	1/1	0.99	0.03	-6.25	48,48,48,48	0
4	HTG	H	1084	19/19	0.56	0.49	-	108,133,144,177	0
4	HTG	I	1086	19/19	0.70	0.66	-	91,131,136,137	0
8	ACT	F	1084	4/4	0.81	0.17	-	96,98,100,100	0
4	HTG	I	1085	19/19	0.81	0.37	-	109,136,143,185	0
4	HTG	B	1084	19/19	0.59	0.57	-	116,159,164,167	0
8	ACT	G	1083	4/4	0.56	0.44	-	96,100,103,107	0
4	HTG	H	1083	19/19	0.48	0.54	-	71,135,144,173	0

## 6.5 Other polymers

There are no such residues in this entry.