



# Full wwPDB X-ray Structure Validation Report ⓘ

Feb 1, 2016 – 03:11 PM GMT

PDB ID : 4BRG  
Title : Legionella pneumophila NTPDase1 crystal form II (closed) in complex with MG GMPPNP  
Authors : Zebisch, M.; Schaefer, P.; Lauble, P.; Straeter, N.  
Deposited on : 2013-06-04  
Resolution : 1.45 Å(reported)

This is a Full wwPDB X-ray Structure Validation Report for a publicly released PDB entry.  
We welcome your comments at [validation@mail.wwpdb.org](mailto:validation@mail.wwpdb.org)  
A user guide is available at  
<http://wwpdb.org/validation/2016/XrayValidationReportHelp>  
with specific help available everywhere you see the ⓘ symbol.

---

The following versions of software and data (see [references ⓘ](#)) were used in the production of this report:

MolProbity : 4.02b-467  
Mogul : 1.7 (RC4), CSD as536be (2015)  
Xtriage (Phenix) : 1.9-1692  
EDS : rb-20026688  
Percentile statistics : 20151230.v01 (using entries in the PDB archive December 30th 2015)  
Refmac : 5.8.0135  
CCP4 : 6.5.0  
Ideal geometry (proteins) : Engh & Huber (2001)  
Ideal geometry (DNA, RNA) : Parkinson et al. (1996)  
Validation Pipeline (wwPDB-VP) : trunk26865

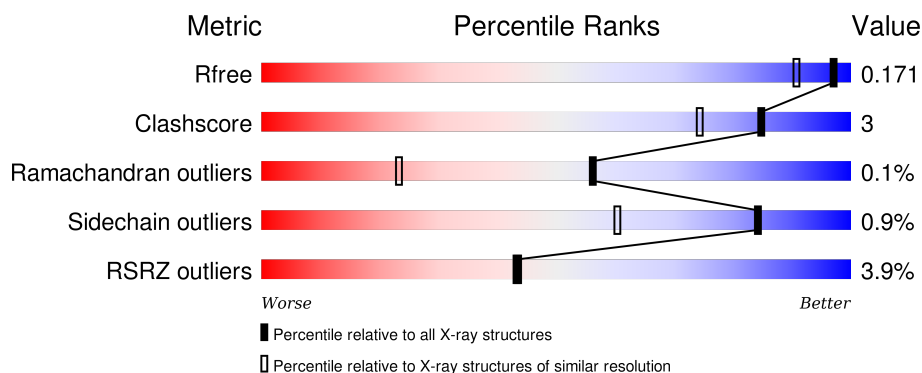
# 1 Overall quality at a glance ⓘ

The following experimental techniques were used to determine the structure:

## *X-RAY DIFFRACTION*

The reported resolution of this entry is 1.45 Å.

Percentile scores (ranging between 0-100) for global validation metrics of the entry are shown in the following graphic. The table shows the number of entries on which the scores are based.



Metric	Whole archive (#Entries)	Similar resolution (#Entries, resolution range(Å))
$R_{free}$	91344	1278 (1.48-1.44)
Clashscore	102246	1336 (1.48-1.44)
Ramachandran outliers	100387	1320 (1.48-1.44)
Sidechain outliers	100360	1320 (1.48-1.44)
RSRZ outliers	91569	1279 (1.48-1.44)

The table below summarises the geometric issues observed across the polymeric chains and their fit to the electron density. The red, orange, yellow and green segments on the lower bar indicate the fraction of residues that contain outliers for  $\geq 3$ , 2, 1 and 0 types of geometric quality criteria. A grey segment represents the fraction of residues that are not modelled. The numeric value for each fraction is indicated below the corresponding segment, with a dot representing fractions  $\leq 5\%$ . The upper red bar (where present) indicates the fraction of residues that have poor fit to the electron density. The numeric value is given above the bar.

Mol	Chain	Length	Quality of chain
1	A	368	<div> <div>4%</div> <div>91%</div> <div>6%</div> </div>
1	B	368	<div> <div>3%</div> <div>89%</div> <div>8%</div> </div>

## 2 Entry composition

There are 7 unique types of molecules in this entry. The entry contains 6736 atoms, of which 0 are hydrogens and 0 are deuteriums.

In the tables below, the ZeroOcc column contains the number of atoms modelled with zero occupancy, the AltConf column contains the number of residues with at least one atom in alternate conformation and the Trace column contains the number of residues modelled with at most 2 atoms.

- Molecule 1 is a protein called ECTONUCLEOSIDE TRIPHOSPHATE DIPHOSPHOHYDROLASE I.

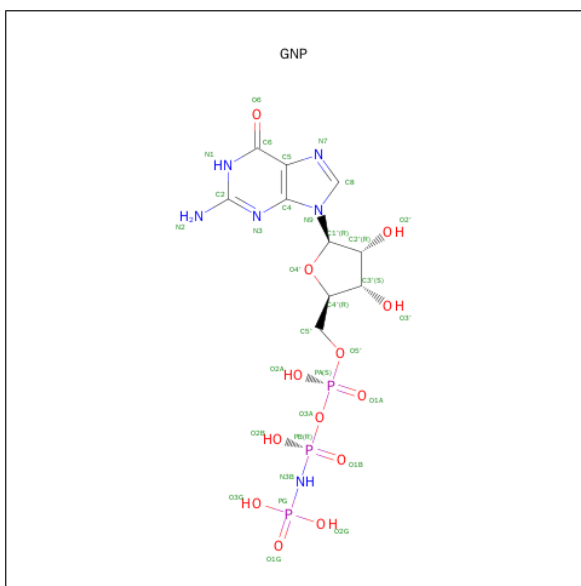
Mol	Chain	Residues	Atoms					ZeroOcc	AltConf	Trace
1	A	359	Total	C	N	O	S	0	22	0
			2992	1902	493	581	16			
1	B	361	Total	C	N	O	S	0	20	0
			2989	1906	487	582	14			

There are 22 discrepancies between the modelled and reference sequences:

Chain	Residue	Modelled	Actual	Comment	Reference
A	34	MET	-	EXPRESSION TAG	UNP Q5ZUA2
A	394	LEU	-	EXPRESSION TAG	UNP Q5ZUA2
A	395	GLU	-	EXPRESSION TAG	UNP Q5ZUA2
A	396	HIS	-	EXPRESSION TAG	UNP Q5ZUA2
A	397	HIS	-	EXPRESSION TAG	UNP Q5ZUA2
A	398	HIS	-	EXPRESSION TAG	UNP Q5ZUA2
A	399	HIS	-	EXPRESSION TAG	UNP Q5ZUA2
A	400	HIS	-	EXPRESSION TAG	UNP Q5ZUA2
A	401	HIS	-	EXPRESSION TAG	UNP Q5ZUA2
A	137	ASP	GLU	CONFLICT	UNP Q5ZUA2
A	149	VAL	ALA	CONFLICT	UNP Q5ZUA2
B	34	MET	-	EXPRESSION TAG	UNP Q5ZUA2
B	394	LEU	-	EXPRESSION TAG	UNP Q5ZUA2
B	395	GLU	-	EXPRESSION TAG	UNP Q5ZUA2
B	396	HIS	-	EXPRESSION TAG	UNP Q5ZUA2
B	397	HIS	-	EXPRESSION TAG	UNP Q5ZUA2
B	398	HIS	-	EXPRESSION TAG	UNP Q5ZUA2
B	399	HIS	-	EXPRESSION TAG	UNP Q5ZUA2
B	400	HIS	-	EXPRESSION TAG	UNP Q5ZUA2
B	401	HIS	-	EXPRESSION TAG	UNP Q5ZUA2
B	137	ASP	GLU	CONFLICT	UNP Q5ZUA2
B	149	VAL	ALA	CONFLICT	UNP Q5ZUA2

- Molecule 2 is PHOSPHOAMINOPHOSPHONIC ACID-GUANYLATE ESTER (three-letter

code: GNP) (formula: C<sub>10</sub>H<sub>17</sub>N<sub>6</sub>O<sub>13</sub>P<sub>3</sub>).



Mol	Chain	Residues	Atoms					ZeroOcc	AltConf
2	A	1	Total 32	C 10	N 6	O 13	P 3	0	0
2	B	1	Total 32	C 10	N 6	O 13	P 3	0	0

- Molecule 3 is MAGNESIUM ION (three-letter code: MG) (formula: Mg).

Mol	Chain	Residues	Atoms	ZeroOcc	AltConf
3	B	1	Total Mg 1 1	0	0
3	A	1	Total Mg 1 1	0	0

- Molecule 4 is 2-(N-MORPHOLINO)-ETHANESULFONIC ACID (three-letter code: MES) (formula:  $\text{C}_6\text{H}_{13}\text{NO}_4\text{S}$ ).



Mol	Chain	Residues	Atoms					ZeroOcc	AltConf
4	A	1	Total	C	N	O	S	0	0
			12	6	1	4	1		
4	B	1	Total	C	N	O	S	0	0
			12	6	1	4	1		

- Molecule 5 is SODIUM ION (three-letter code: NA) (formula: Na).

Mol	Chain	Residues	Atoms		ZeroOcc	AltConf
5	A	1	Total	Na	0	0
			1	1		

- Molecule 6 is CHLORIDE ION (three-letter code: CL) (formula: Cl).

Mol	Chain	Residues	Atoms		ZeroOcc	AltConf
6	B	1	Total	Cl	0	0
			1	1		
6	A	1	Total	Cl	0	0
			1	1		

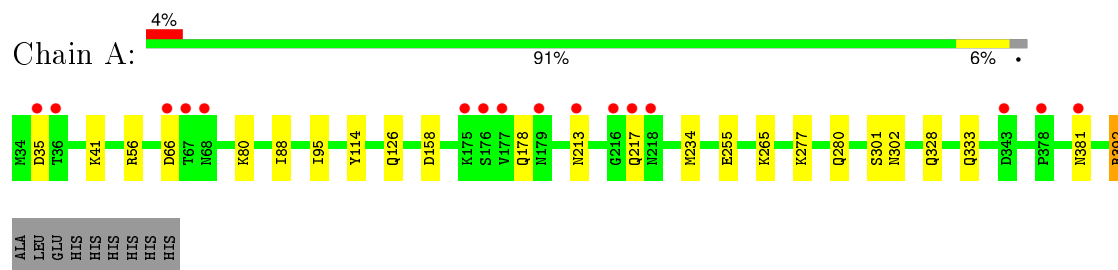
- Molecule 7 is water.

Mol	Chain	Residues	Atoms		ZeroOcc	AltConf
7	A	350	Total	O	0	0
			350	350		
7	B	312	Total	O	0	0
			312	312		

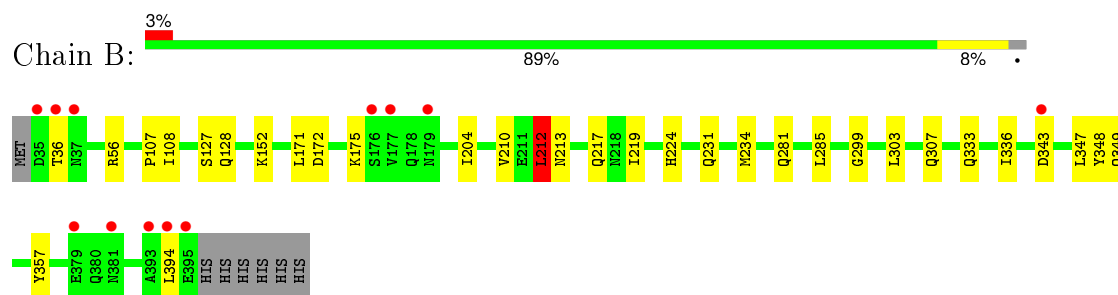
### 3 Residue-property plots [i](#)

These plots are drawn for all protein, RNA and DNA chains in the entry. The first graphic for a chain summarises the proportions of errors displayed in the second graphic. The second graphic shows the sequence view annotated by issues in geometry and electron density. Residues are color-coded according to the number of geometric quality criteria for which they contain at least one outlier: green = 0, yellow = 1, orange = 2 and red = 3 or more. A red dot above a residue indicates a poor fit to the electron density ( $RSRZ > 2$ ). Stretches of 2 or more consecutive residues without any outlier are shown as a green connector. Residues present in the sample, but not in the model, are shown in grey.

- Molecule 1: ECTONUCLEOSIDE TRIPHOSPHATE DIPHOSPHOHYDROLASE I



- Molecule 1: ECTONUCLEOSIDE TRIPHOSPHATE DIPHOSPHOHYDROLASE I



## 4 Data and refinement statistics

Property	Value	Source
Space group	P 1 21 1	Depositor
Cell constants a, b, c, $\alpha$ , $\beta$ , $\gamma$	62.19Å 86.17Å 71.88Å 90.00° 107.02° 90.00°	Depositor
Resolution (Å)	28.99 – 1.45 28.11 – 1.45	Depositor EDS
% Data completeness (in resolution range)	99.2 (28.99-1.45) 99.3 (28.11-1.45)	Depositor EDS
$R_{merge}$	0.05	Depositor
$R_{sym}$	(Not available)	Depositor
$\langle I/\sigma(I) \rangle$ <sup>1</sup>	1.93 (at 1.45Å)	Xtriage
Refinement program	REFMAC 5.7.0029	Depositor
R, $R_{free}$	0.124 , 0.174 0.121 , 0.171	Depositor DCC
$R_{free}$ test set	1292 reflections (1.03%)	DCC
Wilson B-factor (Å <sup>2</sup> )	14.4	Xtriage
Anisotropy	0.157	Xtriage
Bulk solvent $k_{sol}$ (e/Å <sup>3</sup> ), $B_{sol}$ (Å <sup>2</sup> )	0.35 , 46.8	EDS
Estimated twinning fraction	No twinning to report.	Xtriage
L-test for twinning <sup>2</sup>	$\langle  L  \rangle = 0.49$ , $\langle L^2 \rangle = 0.32$	Xtriage
Outliers	1 of 127146 reflections (0.001%)	Xtriage
$F_o, F_c$ correlation	0.98	EDS
Total number of atoms	6736	wwPDB-VP
Average B, all atoms (Å <sup>2</sup> )	21.0	wwPDB-VP

Xtriage's analysis on translational NCS is as follows: *The largest off-origin peak in the Patterson function is 5.78% of the height of the origin peak. No significant pseudotranslation is detected.*

<sup>1</sup>Intensities estimated from amplitudes.

<sup>2</sup>Theoretical values of  $\langle |L| \rangle$ ,  $\langle L^2 \rangle$  for acentric reflections are 0.5, 0.375 respectively for untwinned datasets, and 0.333, 0.2 for perfectly twinned datasets.

## 5 Model quality [i](#)

### 5.1 Standard geometry [i](#)

Bond lengths and bond angles in the following residue types are not validated in this section: NA, GNP, MG, MES, CL

The Z score for a bond length (or angle) is the number of standard deviations the observed value is removed from the expected value. A bond length (or angle) with  $|Z| > 5$  is considered an outlier worth inspection. RMSZ is the root-mean-square of all Z scores of the bond lengths (or angles).

Mol	Chain	Bond lengths		Bond angles	
		RMSZ	$\# Z  > 5$	RMSZ	$\# Z  > 5$
1	A	0.95	1/3116 (0.0%)	0.88	3/4244 (0.1%)
1	B	0.97	1/3110 (0.0%)	0.93	3/4240 (0.1%)
All	All	0.96	2/6226 (0.0%)	0.90	6/8484 (0.1%)

All (2) bond length outliers are listed below:

Mol	Chain	Res	Type	Atoms	Z	Observed(Å)	Ideal(Å)
1	A	301	SER	CB-OG	6.25	1.50	1.42
1	B	357	TYR	CE2-CZ	5.52	1.45	1.38

All (6) bond angle outliers are listed below:

Mol	Chain	Res	Type	Atoms	Z	Observed(°)	Ideal(°)
1	B	234	MET	CG-SD-CE	11.69	118.90	100.20
1	B	347	LEU	CB-CG-CD1	-6.28	100.32	111.00
1	A	392	ARG	NE-CZ-NH2	-5.92	117.34	120.30
1	B	212	LEU	CB-CG-CD2	-5.33	101.94	111.00
1	A	392	ARG	NE-CZ-NH1	5.32	122.96	120.30
1	A	158	ASP	CB-CG-OD1	-5.28	113.55	118.30

There are no chirality outliers.

There are no planarity outliers.

### 5.2 Too-close contacts [i](#)

In the following table, the Non-H and H(model) columns list the number of non-hydrogen atoms and hydrogen atoms in the chain respectively. The H(added) column lists the number of hydrogen atoms added and optimized by MolProbity. The Clashes column lists the number of clashes within the asymmetric unit, whereas Symm-Clashes lists symmetry related clashes.



Mol	Chain	Non-H	H(model)	H(added)	Clashes	Symm-Clashes
1	A	2992	0	2872	15	0
1	B	2989	0	2881	19	0
2	A	32	0	13	0	0
2	B	32	0	13	3	0
3	A	1	0	0	0	0
3	B	1	0	0	0	0
4	A	12	0	13	0	0
4	B	12	0	13	0	0
5	A	1	0	0	0	0
6	A	1	0	0	0	0
6	B	1	0	0	0	0
7	A	350	0	0	8	0
7	B	312	0	0	4	0
All	All	6736	0	5805	34	0

The all-atom clashscore is defined as the number of clashes found per 1000 atoms (including hydrogen atoms). The all-atom clashscore for this structure is 3.

All (34) close contacts within the same asymmetric unit are listed below, sorted by their clash magnitude.

Atom-1	Atom-2	Interatomic distance (Å)	Clash overlap (Å)
1:A:333[B]:GLN:NE2	7:A:2319:HOH:O	1.83	1.10
1:A:333[B]:GLN:CD	7:A:2319:HOH:O	2.23	0.71
1:B:152:LYS:HD2	1:B:394:LEU:CD1	2.22	0.69
1:A:35:ASP:HB3	1:A:41:LYS:HE3	1.74	0.69
1:A:255:GLU:OE2	7:A:2237:HOH:O	2.14	0.65
1:B:348:TYR:CZ	1:B:349:GLN:HG3	2.39	0.58
1:B:210[B]:VAL:HG11	7:B:2152:HOH:O	2.06	0.55
1:A:126:GLN:HG3	7:A:2105:HOH:O	2.06	0.55
1:A:80:LYS:HE3	1:A:381:ASN:HB3	1.90	0.54
1:A:178:GLN:HG3	7:A:2161:HOH:O	2.07	0.53
1:B:231:GLN:HG2	2:B:1397:GNP:O3'	2.09	0.53
1:B:212:LEU:HD12	1:B:219:ILE:HB	1.89	0.53
1:A:213:ASN:HA	1:A:217:GLN:O	2.09	0.53
1:B:299:GLY:CA	2:B:1397:GNP:H5'2	2.38	0.53
1:B:175:LYS:HG2	7:B:2159:HOH:O	2.11	0.51
1:A:277[A]:LYS:HD2	1:A:280:GLN:NE2	2.26	0.51
1:A:88:ILE:HD11	1:A:95:ILE:HD13	1.93	0.50
1:B:107:PRO:O	1:B:108:ILE:HD13	2.12	0.50
1:B:224:HIS:HE1	1:B:281:GLN:OE1	1.96	0.49
1:B:333[A]:GLN:OE1	1:B:336[A]:ILE:HG12	2.12	0.48
1:B:299:GLY:N	2:B:1397:GNP:H5'2	2.30	0.47

*Continued on next page...*

Continued from previous page...

Atom-1	Atom-2	Interatomic distance (Å)	Clash overlap (Å)
1:A:114:TYR:OH	1:A:392:ARG:HD2	2.16	0.46
1:B:307:GLN:NE2	7:B:2260:HOH:O	2.34	0.46
7:A:2329:HOH:O	1:B:128[B]:GLN:HG3	2.15	0.45
1:B:213:ASN:HA	1:B:217:GLN:O	2.16	0.45
1:A:302:ASN:OD1	7:A:2289:HOH:O	2.21	0.45
1:A:35:ASP:CB	1:A:41:LYS:HE3	2.46	0.44
1:B:343:ASP:HB2	7:B:2291:HOH:O	2.17	0.43
1:A:66:ASP:OD1	1:A:66:ASP:N	2.52	0.43
1:B:204[B]:ILE:HD11	1:B:285:LEU:HD21	2.01	0.43
1:B:171:LEU:O	1:B:172:ASP:HB2	2.20	0.42
7:A:2328:HOH:O	1:B:127:SER:OG	2.20	0.42
1:A:80:LYS:HE3	1:A:381:ASN:CB	2.50	0.41

There are no symmetry-related clashes.

## 5.3 Torsion angles [i](#)

### 5.3.1 Protein backbone [i](#)

In the following table, the Percentiles column shows the percent Ramachandran outliers of the chain as a percentile score with respect to all X-ray entries followed by that with respect to entries of similar resolution.

The Analysed column shows the number of residues for which the backbone conformation was analysed, and the total number of residues.

Mol	Chain	Analysed	Favoured	Allowed	Outliers	Percentiles	
1	A	379/368 (103%)	362 (96%)	17 (4%)	0	100	100
1	B	379/368 (103%)	369 (97%)	9 (2%)	1 (0%)	46	17
All	All	758/736 (103%)	731 (96%)	26 (3%)	1 (0%)	56	23

All (1) Ramachandran outliers are listed below:

Mol	Chain	Res	Type
1	B	36	THR

### 5.3.2 Protein sidechains ⓘ

In the following table, the Percentiles column shows the percent sidechain outliers of the chain as a percentile score with respect to all X-ray entries followed by that with respect to entries of similar resolution.

The Analysed column shows the number of residues for which the sidechain conformation was analysed, and the total number of residues.

Mol	Chain	Analysed	Rotameric	Outliers	Percentiles	
1	A	342/328 (104%)	337 (98%)	5 (2%)	72	39
1	B	340/328 (104%)	338 (99%)	2 (1%)	90	73
All	All	682/656 (104%)	675 (99%)	7 (1%)	84	56

All (7) residues with a non-rotameric sidechain are listed below:

Mol	Chain	Res	Type
1	A	56	ARG
1	A	234[A]	MET
1	A	234[B]	MET
1	A	265	LYS
1	A	328	GLN
1	B	56	ARG
1	B	212	LEU

Some sidechains can be flipped to improve hydrogen bonding and reduce clashes. All (8) such sidechains are listed below:

Mol	Chain	Res	Type
1	A	145	GLN
1	A	179	ASN
1	A	318	ASN
1	A	349	GLN
1	B	126	GLN
1	B	319	GLN
1	B	327	ASN
1	B	370	ASN

### 5.3.3 RNA ⓘ

There are no RNA molecules in this entry.

## 5.4 Non-standard residues in protein, DNA, RNA chains [i](#)

There are no non-standard protein/DNA/RNA residues in this entry.

## 5.5 Carbohydrates [i](#)

There are no carbohydrates in this entry.

## 5.6 Ligand geometry [i](#)

Of 9 ligands modelled in this entry, 5 are monoatomic - leaving 4 for Mogul analysis.

In the following table, the Counts columns list the number of bonds (or angles) for which Mogul statistics could be retrieved, the number of bonds (or angles) that are observed in the model and the number of bonds (or angles) that are defined in the chemical component dictionary. The Link column lists molecule types, if any, to which the group is linked. The Z score for a bond length (or angle) is the number of standard deviations the observed value is removed from the expected value. A bond length (or angle) with  $|Z| > 2$  is considered an outlier worth inspection. RMSZ is the root-mean-square of all Z scores of the bond lengths (or angles).

Mol	Type	Chain	Res	Link	Bond lengths			Bond angles		
					Counts	RMSZ	# $ Z  > 2$	Counts	RMSZ	# $ Z  > 2$
2	GNP	A	1393	3	28,34,34	2.13	6 (21%)	33,54,54	2.70	10 (30%)
4	MES	A	1395	-	11,12,12	1.07	1 (9%)	14,16,16	3.71	4 (28%)
2	GNP	B	1397	3	28,34,34	2.37	10 (35%)	33,54,54	2.30	11 (33%)
4	MES	B	1399	-	11,12,12	1.12	0	14,16,16	3.19	3 (21%)

In the following table, the Chirals column lists the number of chiral outliers, the number of chiral centers analysed, the number of these observed in the model and the number defined in the chemical component dictionary. Similar counts are reported in the Torsion and Rings columns. '-' means no outliers of that kind were identified.

Mol	Type	Chain	Res	Link	Chirals	Torsions	Rings
2	GNP	A	1393	3	-	1/12/38/38	0/3/3/3
4	MES	A	1395	-	-	0/6/14/14	0/1/1/1
2	GNP	B	1397	3	-	1/12/38/38	0/3/3/3
4	MES	B	1399	-	-	0/6/14/14	0/1/1/1

All (17) bond length outliers are listed below:

Mol	Chain	Res	Type	Atoms	Z	Observed(Å)	Ideal(Å)
2	B	1397	GNP	O5'-C5'	-3.50	1.30	1.44
2	B	1397	GNP	PB-O2B	-3.14	1.47	1.56

*Continued on next page...*

*Continued from previous page...*

Mol	Chain	Res	Type	Atoms	Z	Observed(Å)	Ideal(Å)
2	A	1393	GNP	PB-O2B	-2.64	1.49	1.56
2	B	1397	GNP	PG-O2G	-2.48	1.49	1.56
2	A	1393	GNP	PG-O2G	-2.35	1.50	1.56
2	B	1397	GNP	PG-O3G	-2.10	1.50	1.56
4	A	1395	MES	C5-N4	2.21	1.53	1.46
2	A	1393	GNP	C6-C5	2.48	1.46	1.41
2	B	1397	GNP	C8-N7	2.51	1.39	1.34
2	B	1397	GNP	PG-N3B	2.80	1.70	1.63
2	A	1393	GNP	O4'-C1'	3.06	1.45	1.41
2	B	1397	GNP	C5-C4	3.62	1.48	1.40
2	A	1393	GNP	C5-C4	3.83	1.49	1.40
2	B	1397	GNP	PB-O1B	3.92	1.50	1.46
2	B	1397	GNP	C6-C5	3.97	1.49	1.41
2	B	1397	GNP	PG-O1G	7.07	1.54	1.46
2	A	1393	GNP	PG-O1G	7.88	1.55	1.46

All (28) bond angle outliers are listed below:

Mol	Chain	Res	Type	Atoms	Z	Observed(°)	Ideal(°)
4	A	1395	MES	O1S-S-C8	-11.01	97.51	106.91
4	B	1399	MES	O1S-S-C8	-7.15	100.81	106.91
2	A	1393	GNP	C6-C5-C4	-5.47	114.36	120.90
2	A	1393	GNP	N3-C2-N1	-5.44	119.17	127.44
2	A	1393	GNP	C5-C6-N1	-4.54	117.39	123.59
2	B	1397	GNP	C4-C5-N7	-4.53	105.31	109.48
2	B	1397	GNP	O2'-C2'-C3'	-4.46	97.34	111.83
2	A	1393	GNP	C1'-N9-C4	-4.23	120.55	126.94
2	B	1397	GNP	O1G-PG-N3B	-4.14	105.55	111.90
2	A	1393	GNP	C4'-O4'-C1'	-3.90	105.43	109.72
2	A	1393	GNP	O1G-PG-N3B	-3.90	105.92	111.90
2	B	1397	GNP	C5-C6-N1	-3.71	118.51	123.59
2	B	1397	GNP	C6-C5-C4	-3.53	116.67	120.90
2	B	1397	GNP	O3'-C3'-C2'	-2.95	102.22	111.83
2	A	1393	GNP	C4-C5-N7	-2.66	107.03	109.48
4	B	1399	MES	O2S-S-O1S	-2.54	104.23	113.48
2	B	1397	GNP	N3-C2-N1	-2.51	123.63	127.44
2	A	1393	GNP	PA-O3A-PB	-2.11	125.58	132.67
4	A	1395	MES	C6-O1-C2	2.13	117.07	109.89
2	B	1397	GNP	O4'-C4'-C3'	2.38	109.94	105.15
2	A	1393	GNP	O2B-PB-O1B	3.29	116.88	110.00
4	A	1395	MES	C2-C3-N4	3.31	115.14	110.12
2	B	1397	GNP	C2'-C1'-N9	3.62	119.82	114.29

*Continued on next page...*

*Continued from previous page...*

Mol	Chain	Res	Type	Atoms	Z	Observed(°)	Ideal(°)
2	B	1397	GNP	O2B-PB-O1B	3.72	117.77	110.00
2	B	1397	GNP	C6-N1-C2	3.97	121.45	115.94
4	A	1395	MES	O2S-S-C8	6.54	112.48	106.91
2	A	1393	GNP	C6-N1-C2	7.80	126.77	115.94
4	B	1399	MES	O2S-S-C8	8.83	114.44	106.91

There are no chirality outliers.

All (2) torsion outliers are listed below:

Mol	Chain	Res	Type	Atoms
2	A	1393	GNP	O1G-PG-N3B-PB
2	B	1397	GNP	O1G-PG-N3B-PB

There are no ring outliers.

1 monomer is involved in 3 short contacts:

Mol	Chain	Res	Type	Clashes	Symm-Clashes
2	B	1397	GNP	3	0

## 5.7 Other polymers [i](#)

There are no such residues in this entry.

## 5.8 Polymer linkage issues [i](#)

There are no chain breaks in this entry.

## 6 Fit of model and data ⓘ

### 6.1 Protein, DNA and RNA chains ⓘ

In the following table, the column labelled ‘#RSRZ> 2’ contains the number (and percentage) of RSRZ outliers, followed by percent RSRZ outliers for the chain as percentile scores relative to all X-ray entries and entries of similar resolution. The OWAB column contains the minimum, median, 95<sup>th</sup> percentile and maximum values of the occupancy-weighted average B-factor per residue. The column labelled ‘Q< 0.9’ lists the number of (and percentage) of residues with an average occupancy less than 0.9.

Mol	Chain	Analysed	<RSRZ>	#RSRZ>2	OWAB(Å <sup>2</sup> )	Q<0.9
1	A	359/368 (97%)	-0.12	16 (4%) 37 37	8, 17, 43, 83	0
1	B	361/368 (98%)	-0.15	12 (3%) 50 50	9, 16, 40, 65	0
All	All	720/736 (97%)	-0.13	28 (3%) 43 43	8, 16, 43, 83	0

All (28) RSRZ outliers are listed below:

Mol	Chain	Res	Type	RSRZ
1	A	177	VAL	8.2
1	B	177	VAL	5.4
1	B	36	THR	4.8
1	A	179	ASN	4.4
1	A	176	SER	4.2
1	B	394	LEU	3.7
1	B	381	ASN	3.3
1	A	66	ASP	3.1
1	A	217	GLN	3.1
1	B	393	ALA	3.0
1	A	378	PRO	3.0
1	A	381	ASN	2.9
1	A	343[A]	ASP	2.9
1	B	35	ASP	2.9
1	A	213	ASN	2.9
1	B	343	ASP	2.7
1	A	218	ASN	2.6
1	B	179	ASN	2.5
1	A	175	LYS	2.5
1	A	36	THR	2.5
1	A	67	THR	2.4
1	B	395	GLU	2.4
1	A	216	GLY	2.4
1	B	176	SER	2.4

*Continued on next page...*

*Continued from previous page...*

Mol	Chain	Res	Type	RSRZ
1	A	35	ASP	2.3
1	B	379	GLU	2.2
1	A	68	ASN	2.1
1	B	37	ASN	2.0

## 6.2 Non-standard residues in protein, DNA, RNA chains [i](#)

There are no non-standard protein/DNA/RNA residues in this entry.

## 6.3 Carbohydrates [i](#)

There are no carbohydrates in this entry.

## 6.4 Ligands [i](#)

In the following table, the Atoms column lists the number of modelled atoms in the group and the number defined in the chemical component dictionary. LLDF column lists the quality of electron density of the group with respect to its neighbouring residues in protein, DNA or RNA chains. The B-factors column lists the minimum, median, 95<sup>th</sup> percentile and maximum values of B factors of atoms in the group. The column labelled 'Q< 0.9' lists the number of atoms with occupancy less than 0.9.

Mol	Type	Chain	Res	Atoms	RSCC	RSR	LLDF	B-factors( $\text{\AA}^2$ )	Q<0.9
4	MES	A	1395	12/12	0.98	0.08	0.36	23,28,39,52	0
3	MG	B	1398	1/1	1.00	0.08	-0.12	10,10,10,10	0
3	MG	A	1394	1/1	1.00	0.08	-0.15	11,11,11,11	0
4	MES	B	1399	12/12	0.99	0.06	-0.57	17,21,28,31	0
2	GNP	B	1397	32/32	0.99	0.07	-0.89	9,23,32,36	0
2	GNP	A	1393	32/32	0.99	0.06	-0.98	9,16,24,27	0
6	CL	B	1396	1/1	0.99	0.05	-1.01	27,27,27,27	0
5	NA	A	1396	1/1	0.99	0.05	-1.35	38,38,38,38	0
6	CL	A	1397	1/1	0.99	0.05	-1.65	22,22,22,22	0

## 6.5 Other polymers [i](#)

There are no such residues in this entry.