



# Full wwPDB X-ray Structure Validation Report ⓘ

Feb 1, 2016 – 03:12 PM GMT

PDB ID : 4BTV  
Title : Structure of PhaZ7 PHB depolymerase in complex with 3HB trimer  
Authors : Hermawan, S.; Subedi, B.; Papageorgiou, A.C.; Jendrossek, D.  
Deposited on : 2013-06-19  
Resolution : 1.59 Å(reported)

This is a Full wwPDB X-ray Structure Validation Report for a publicly released PDB entry.  
We welcome your comments at [validation@mail.wwpdb.org](mailto:validation@mail.wwpdb.org)  
A user guide is available at  
<http://wwpdb.org/validation/2016/XrayValidationReportHelp>  
with specific help available everywhere you see the ⓘ symbol.

---

The following versions of software and data (see [references ⓘ](#)) were used in the production of this report:

MolProbity : 4.02b-467  
Mogul : 1.7 (RC4), CSD as536be (2015)  
Xtriage (Phenix) : 1.9-1692  
EDS : rb-20026688  
Percentile statistics : 20151230.v01 (using entries in the PDB archive December 30th 2015)  
Refmac : 5.8.0135  
CCP4 : 6.5.0  
Ideal geometry (proteins) : Engh & Huber (2001)  
Ideal geometry (DNA, RNA) : Parkinson et al. (1996)  
Validation Pipeline (wwPDB-VP) : trunk26865

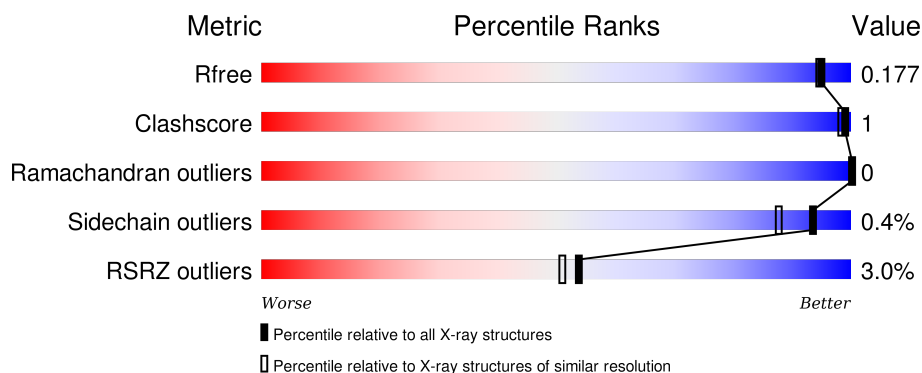
# 1 Overall quality at a glance

The following experimental techniques were used to determine the structure:

## *X-RAY DIFFRACTION*

The reported resolution of this entry is 1.59 Å.

Percentile scores (ranging between 0-100) for global validation metrics of the entry are shown in the following graphic. The table shows the number of entries on which the scores are based.



Metric	Whole archive (#Entries)	Similar resolution (#Entries, resolution range(Å))
$R_{free}$	91344	2475 (1.60-1.60)
Clashscore	102246	2732 (1.60-1.60)
Ramachandran outliers	100387	2654 (1.60-1.60)
Sidechain outliers	100360	2653 (1.60-1.60)
RSRZ outliers	91569	2479 (1.60-1.60)

The table below summarises the geometric issues observed across the polymeric chains and their fit to the electron density. The red, orange, yellow and green segments on the lower bar indicate the fraction of residues that contain outliers for  $\geq 3$ , 2, 1 and 0 types of geometric quality criteria. A grey segment represents the fraction of residues that are not modelled. The numeric value for each fraction is indicated below the corresponding segment, with a dot representing fractions  $\leq 5\%$ . The upper red bar (where present) indicates the fraction of residues that have poor fit to the electron density. The numeric value is given above the bar.

Mol	Chain	Length	Quality of chain
1	A	344	<div> <div>3%</div> <div>93%</div> <div>.</div> <div>.</div> </div>
1	B	344	<div> <div>2%</div> <div>95%</div> <div>.</div> <div>.</div> </div>

The following table lists non-polymeric compounds, carbohydrate monomers and non-standard residues in protein, DNA, RNA chains that are outliers for geometric or electron-density-fit criteria:

Mol	Type	Chain	Res	Chirality	Geometry	Clashes	Electron density
2	RB3	A	1345	X	-	-	-
2	RB3	B	1343	X	-	-	-

## 2 Entry composition [i](#)

There are 3 unique types of molecules in this entry. The entry contains 6084 atoms, of which 0 are hydrogens and 0 are deuteriums.

In the tables below, the ZeroOcc column contains the number of atoms modelled with zero occupancy, the AltConf column contains the number of residues with at least one atom in alternate conformation and the Trace column contains the number of residues modelled with at most 2 atoms.

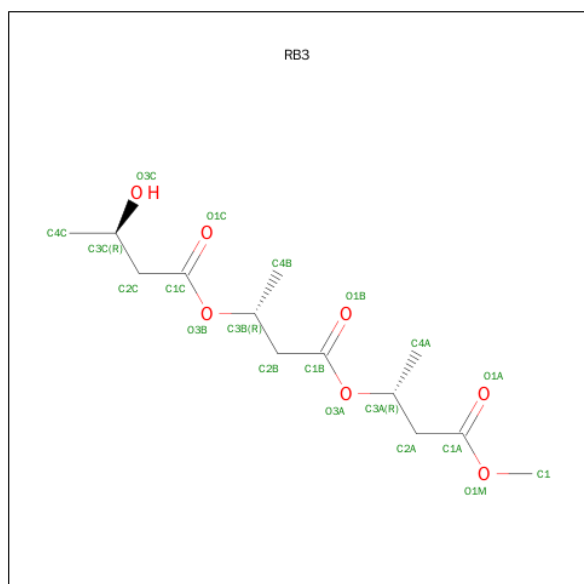
- Molecule 1 is a protein called PHB DEPOLYMERASE PHAZ7.

Mol	Chain	Residues	Atoms					ZeroOcc	AltConf	Trace
1	A	330	Total	C	N	O	S	0	8	0
			2479	1565	415	483	16			
1	B	330	Total	C	N	O	S	0	5	1
			2462	1552	413	481	16			

There are 2 discrepancies between the modelled and reference sequences:

Chain	Residue	Modelled	Actual	Comment	Reference
A	136	ALA	SER	ENGINEERED MUTATION	UNP Q939Q9
B	136	ALA	SER	ENGINEERED MUTATION	UNP Q939Q9

- Molecule 2 is (1R)-3-{[(1R)-3-METHOXY-1-METHYL-3-OXOPROPYL]OXY}-1-METHYL-3-OXOPROPYL (3R)-3-HYDROXYBUTANOATE (three-letter code: RB3) (formula: C<sub>13</sub>H<sub>22</sub>O<sub>7</sub>).



Mol	Chain	Residues	Atoms			ZeroOcc	AltConf
2	A	1	Total	C	O	0	0
			20	13	7		
2	B	1	Total	C	O	0	0
			20	13	7		

- Molecule 3 is water.

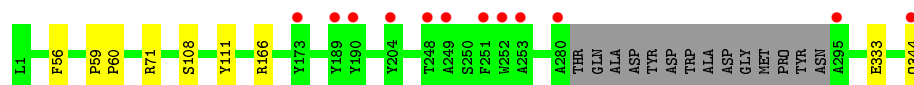
Mol	Chain	Residues	Atoms		ZeroOcc	AltConf
3	A	527	Total	O	0	0
			527	527		
3	B	576	Total	O	0	0
			576	576		

### 3 Residue-property plots [i](#)

These plots are drawn for all protein, RNA and DNA chains in the entry. The first graphic for a chain summarises the proportions of errors displayed in the second graphic. The second graphic shows the sequence view annotated by issues in geometry and electron density. Residues are color-coded according to the number of geometric quality criteria for which they contain at least one outlier: green = 0, yellow = 1, orange = 2 and red = 3 or more. A red dot above a residue indicates a poor fit to the electron density ( $RSRZ > 2$ ). Stretches of 2 or more consecutive residues without any outlier are shown as a green connector. Residues present in the sample, but not in the model, are shown in grey.

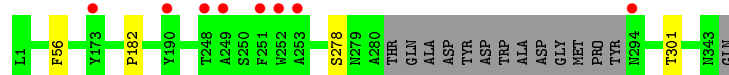
#### • Molecule 1: PHB DEPOLYMERASE PHAZ7

Chain A: 



#### • Molecule 1: PHB DEPOLYMERASE PHAZ7

Chain B: 



## 4 Data and refinement statistics

Property	Value	Source
Space group	P 1 21 1	Depositor
Cell constants a, b, c, $\alpha$ , $\beta$ , $\gamma$	41.34Å 199.37Å 44.42Å 90.00° 114.24° 90.00°	Depositor
Resolution (Å)	19.85 – 1.59 19.85 – 1.59	Depositor EDS
% Data completeness (in resolution range)	96.6 (19.85-1.59) 96.6 (19.85-1.59)	Depositor EDS
$R_{merge}$	0.04	Depositor
$R_{sym}$	(Not available)	Depositor
$\langle I/\sigma(I) \rangle$ <sup>1</sup>	2.64 (at 1.60Å)	Xtriage
Refinement program	PHENIX (PHENIX.REFINE)	Depositor
R, $R_{free}$	0.133 , 0.158 0.144 , 0.177	Depositor DCC
$R_{free}$ test set	4190 reflections (5.26%)	DCC
Wilson B-factor (Å <sup>2</sup> )	9.7	Xtriage
Anisotropy	0.120	Xtriage
Bulk solvent $k_{sol}$ (e/Å <sup>3</sup> ), $B_{sol}$ (Å <sup>2</sup> )	0.34 , 56.6	EDS
Estimated twinning fraction	No twinning to report.	Xtriage
L-test for twinning <sup>2</sup>	$\langle  L  \rangle = 0.48$ , $\langle L^2 \rangle = 0.31$	Xtriage
Outliers	0 of 83783 reflections	Xtriage
$F_o, F_c$ correlation	0.97	EDS
Total number of atoms	6084	wwPDB-VP
Average B, all atoms (Å <sup>2</sup> )	12.0	wwPDB-VP

Xtriage's analysis on translational NCS is as follows: *The largest off-origin peak in the Patterson function is 5.85% of the height of the origin peak. No significant pseudotranslation is detected.*

<sup>1</sup>Intensities estimated from amplitudes.

<sup>2</sup>Theoretical values of  $\langle |L| \rangle$ ,  $\langle L^2 \rangle$  for acentric reflections are 0.5, 0.375 respectively for untwinned datasets, and 0.333, 0.2 for perfectly twinned datasets.

## 5 Model quality

### 5.1 Standard geometry

Bond lengths and bond angles in the following residue types are not validated in this section: RB3

The Z score for a bond length (or angle) is the number of standard deviations the observed value is removed from the expected value. A bond length (or angle) with  $|Z| > 5$  is considered an outlier worth inspection. RMSZ is the root-mean-square of all Z scores of the bond lengths (or angles).

Mol	Chain	Bond lengths		Bond angles	
		RMSZ	$\# Z  > 5$	RMSZ	$\# Z  > 5$
1	A	0.55	0/2565	0.63	0/3482
1	B	0.58	0/2539	0.65	0/3446
All	All	0.57	0/5104	0.64	0/6928

There are no bond length outliers.

There are no bond angle outliers.

There are no chirality outliers.

There are no planarity outliers.

### 5.2 Too-close contacts

In the following table, the Non-H and H(model) columns list the number of non-hydrogen atoms and hydrogen atoms in the chain respectively. The H(added) column lists the number of hydrogen atoms added and optimized by MolProbity. The Clashes column lists the number of clashes within the asymmetric unit, whereas Symm-Clashes lists symmetry related clashes.

Mol	Chain	Non-H	H(model)	H(added)	Clashes	Symm-Clashes
1	A	2479	0	2358	5	0
1	B	2462	0	2330	2	0
2	A	20	0	21	0	0
2	B	20	0	21	1	0
3	A	527	0	0	2	1
3	B	576	0	0	0	3
All	All	6084	0	4730	7	4

The all-atom clashscore is defined as the number of clashes found per 1000 atoms (including hydrogen atoms). The all-atom clashscore for this structure is 1.

All (7) close contacts within the same asymmetric unit are listed below, sorted by their clash



magnitude.

Atom-1	Atom-2	Interatomic distance (Å)	Clash overlap (Å)
1:A:71[A]:ARG:NH2	3:A:2219:HOH:O	2.22	0.70
1:A:166:ARG:HH12	1:A:344:GLN:HE22	1.44	0.66
1:A:333:GLU:OE2	3:A:2508:HOH:O	2.15	0.63
1:B:182:PRO:HB3	2:B:1343:RB3:H12	1.95	0.48
1:A:108:SER:HA	1:A:111:TYR:CD2	2.53	0.44
1:A:59:PRO:HA	1:A:60:PRO:HD3	1.94	0.41
1:B:278:SER:HB2	1:B:301:THR:HG21	2.04	0.40

All (4) symmetry-related close contacts are listed below. The label for Atom-2 includes the symmetry operator and encoded unit-cell translations to be applied.

Atom-1	Atom-2	Interatomic distance (Å)	Clash overlap (Å)
3:B:2039:HOH:O	3:B:2332:HOH:O[1_554]	2.06	0.14
3:B:2263:HOH:O	3:B:2269:HOH:O[1_455]	2.11	0.09
3:A:2095:HOH:O	3:A:2418:HOH:O[1_556]	2.17	0.03
3:B:2259:HOH:O	3:B:2525:HOH:O[1_455]	2.18	0.02

## 5.3 Torsion angles

### 5.3.1 Protein backbone

In the following table, the Percentiles column shows the percent Ramachandran outliers of the chain as a percentile score with respect to all X-ray entries followed by that with respect to entries of similar resolution.

The Analysed column shows the number of residues for which the backbone conformation was analysed, and the total number of residues.

Mol	Chain	Analysed	Favoured	Allowed	Outliers	Percentiles	
1	A	334/344 (97%)	322 (96%)	12 (4%)	0	100	100
1	B	331/344 (96%)	321 (97%)	10 (3%)	0	100	100
All	All	665/688 (97%)	643 (97%)	22 (3%)	0	100	100

There are no Ramachandran outliers to report.

### 5.3.2 Protein sidechains [i](#)

In the following table, the Percentiles column shows the percent sidechain outliers of the chain as a percentile score with respect to all X-ray entries followed by that with respect to entries of similar resolution.

The Analysed column shows the number of residues for which the sidechain conformation was analysed, and the total number of residues.

Mol	Chain	Analysed	Rotameric	Outliers	Percentiles	
1	A	256/260 (98%)	255 (100%)	1 (0%)	93	88
1	B	253/260 (97%)	252 (100%)	1 (0%)	93	88
All	All	509/520 (98%)	507 (100%)	2 (0%)	93	88

All (2) residues with a non-rotameric sidechain are listed below:

Mol	Chain	Res	Type
1	A	56	PHE
1	B	56	PHE

Some sidechains can be flipped to improve hydrogen bonding and reduce clashes. There are no such sidechains identified.

### 5.3.3 RNA [i](#)

There are no RNA molecules in this entry.

## 5.4 Non-standard residues in protein, DNA, RNA chains [i](#)

There are no non-standard protein/DNA/RNA residues in this entry.

## 5.5 Carbohydrates [i](#)

There are no carbohydrates in this entry.

## 5.6 Ligand geometry [i](#)

2 ligands are modelled in this entry.

In the following table, the Counts columns list the number of bonds (or angles) for which Mogul statistics could be retrieved, the number of bonds (or angles) that are observed in the model and the number of bonds (or angles) that are defined in the chemical component dictionary. The Link

column lists molecule types, if any, to which the group is linked. The Z score for a bond length (or angle) is the number of standard deviations the observed value is removed from the expected value. A bond length (or angle) with  $|Z| > 2$  is considered an outlier worth inspection. RMSZ is the root-mean-square of all Z scores of the bond lengths (or angles).

Mol	Type	Chain	Res	Link	Bond lengths			Bond angles		
					Counts	RMSZ	# Z  > 2	Counts	RMSZ	# Z  > 2
2	RB3	A	1345	-	19,19,19	1.31	4 (21%)	23,24,24	2.06	6 (26%)
2	RB3	B	1343	-	19,19,19	1.38	4 (21%)	23,24,24	2.36	6 (26%)

In the following table, the Chirals column lists the number of chiral outliers, the number of chiral centers analysed, the number of these observed in the model and the number defined in the chemical component dictionary. Similar counts are reported in the Torsion and Rings columns. '-' means no outliers of that kind were identified.

Mol	Type	Chain	Res	Link	Chirals	Torsions	Rings
2	RB3	A	1345	-	1/1/6/6	0/22/22/22	0/0/0/0
2	RB3	B	1343	-	1/1/6/6	0/22/22/22	0/0/0/0

All (8) bond length outliers are listed below:

Mol	Chain	Res	Type	Atoms	Z	Observed(Å)	Ideal(Å)
2	B	1343	RB3	O3A-C3A	-3.10	1.41	1.47
2	A	1345	RB3	O3A-C3A	-2.91	1.41	1.47
2	B	1343	RB3	O3B-C3B	-2.73	1.42	1.47
2	A	1345	RB3	O3B-C3B	-2.32	1.42	1.47
2	A	1345	RB3	O3A-C1B	2.07	1.40	1.34
2	B	1343	RB3	O3A-C1B	2.27	1.41	1.34
2	A	1345	RB3	O1M-C1A	2.37	1.40	1.32
2	B	1343	RB3	O1M-C1A	2.40	1.41	1.32

All (12) bond angle outliers are listed below:

Mol	Chain	Res	Type	Atoms	Z	Observed(°)	Ideal(°)
2	B	1343	RB3	O1B-C1B-C2B	-3.19	117.35	124.69
2	A	1345	RB3	O1B-C1B-C2B	-2.55	118.82	124.69
2	B	1343	RB3	O1A-C1A-C2A	-2.28	119.44	124.69
2	B	1343	RB3	C4A-C3A-C2A	-2.22	109.62	112.63
2	A	1345	RB3	O3C-C3C-C4C	2.15	120.33	109.55
2	A	1345	RB3	O3C-C3C-C2C	2.39	118.08	110.09
2	B	1343	RB3	O1M-C1A-C2A	2.51	118.08	111.58
2	A	1345	RB3	O1M-C1A-C2A	3.27	120.05	111.58
2	A	1345	RB3	O3A-C1B-C2B	4.27	119.81	111.54
2	B	1343	RB3	O3A-C1B-C2B	4.35	119.96	111.54

*Continued on next page...*

*Continued from previous page...*

Mol	Chain	Res	Type	Atoms	Z	Observed(°)	Ideal(°)
2	A	1345	RB3	C4C-C3C-C2C	5.87	121.56	112.12
2	B	1343	RB3	C4C-C3C-C2C	7.99	124.97	112.12

All (2) chirality outliers are listed below:

Mol	Chain	Res	Type	Atom
2	B	1343	RB3	C3C
2	A	1345	RB3	C3C

There are no torsion outliers.

There are no ring outliers.

1 monomer is involved in 1 short contact:

Mol	Chain	Res	Type	Clashes	Symm-Clashes
2	B	1343	RB3	1	0

## 5.7 Other polymers [i](#)

There are no such residues in this entry.

## 5.8 Polymer linkage issues [i](#)

There are no chain breaks in this entry.

## 6 Fit of model and data

### 6.1 Protein, DNA and RNA chains

In the following table, the column labelled ‘#RSRZ> 2’ contains the number (and percentage) of RSRZ outliers, followed by percent RSRZ outliers for the chain as percentile scores relative to all X-ray entries and entries of similar resolution. The OWAB column contains the minimum, median, 95<sup>th</sup> percentile and maximum values of the occupancy-weighted average B-factor per residue. The column labelled ‘Q< 0.9’ lists the number of (and percentage) of residues with an average occupancy less than 0.9.

Mol	Chain	Analysed	<RSRZ>	#RSRZ>2	OWAB(Å <sup>2</sup> )	Q<0.9
1	A	330/344 (95%)	-0.17	12 (3%) 46 43	4, 9, 21, 46	0
1	B	330/344 (95%)	-0.24	8 (2%) 62 60	3, 8, 18, 37	0
All	All	660/688 (95%)	-0.20	20 (3%) 54 51	3, 8, 20, 46	0

All (20) RSRZ outliers are listed below:

Mol	Chain	Res	Type	RSRZ
1	B	252	TRP	5.8
1	A	252	TRP	5.5
1	A	173	TYR	5.1
1	A	295	ALA	5.0
1	B	251	PHE	4.9
1	A	251	PHE	4.8
1	B	249	ALA	4.3
1	A	249	ALA	4.1
1	B	294	ASN	3.7
1	A	248	THR	3.5
1	A	280	ALA	3.3
1	B	248	THR	3.3
1	B	190	TYR	3.3
1	B	173	TYR	3.2
1	A	190	TYR	3.0
1	A	253	ALA	2.9
1	B	253	ALA	2.9
1	A	204	TYR	2.4
1	A	344	GLN	2.1
1	A	189	TYR	2.0

## 6.2 Non-standard residues in protein, DNA, RNA chains [i](#)

There are no non-standard protein/DNA/RNA residues in this entry.

## 6.3 Carbohydrates [i](#)

There are no carbohydrates in this entry.

## 6.4 Ligands [i](#)

In the following table, the Atoms column lists the number of modelled atoms in the group and the number defined in the chemical component dictionary. LLDF column lists the quality of electron density of the group with respect to its neighbouring residues in protein, DNA or RNA chains. The B-factors column lists the minimum, median, 95<sup>th</sup> percentile and maximum values of B factors of atoms in the group. The column labelled 'Q< 0.9' lists the number of atoms with occupancy less than 0.9.

Mol	Type	Chain	Res	Atoms	RSCC	RSR	LLDF	B-factors( $\text{\AA}^2$ )	Q<0.9
2	RB3	B	1343	20/20	0.94	0.15	1.41	13,18,44,54	0
2	RB3	A	1345	20/20	0.91	0.13	1.16	13,18,47,50	0

## 6.5 Other polymers [i](#)

There are no such residues in this entry.