



Full wwPDB X-ray Structure Validation Report ⓘ

Feb 1, 2016 – 07:43 AM GMT

PDB ID : 3BXF
Title : Crystal structure of effector binding domain of central glycolytic gene regulator (CggR) from *Bacillus subtilis* in complex with effector fructose-1,6-bisphosphate
Authors : Rezacova, P.; Otwinowski, Z.
Deposited on : 2008-01-13
Resolution : 1.70 Å(reported)

This is a Full wwPDB X-ray Structure Validation Report for a publicly released PDB entry.
We welcome your comments at validation@mail.wwpdb.org
A user guide is available at
<http://wwpdb.org/validation/2016/XrayValidationReportHelp>
with specific help available everywhere you see the ⓘ symbol.

The following versions of software and data (see [references ⓘ](#)) were used in the production of this report:

MolProbity : 4.02b-467
Mogul : 1.7 (RC4), CSD as536be (2015)
Xtriage (Phenix) : 1.9-1692
EDS : rb-20026688
Percentile statistics : 20151230.v01 (using entries in the PDB archive December 30th 2015)
Refmac : 5.8.0135
CCP4 : 6.5.0
Ideal geometry (proteins) : Engh & Huber (2001)
Ideal geometry (DNA, RNA) : Parkinson et al. (1996)
Validation Pipeline (wwPDB-VP) : trunk26865

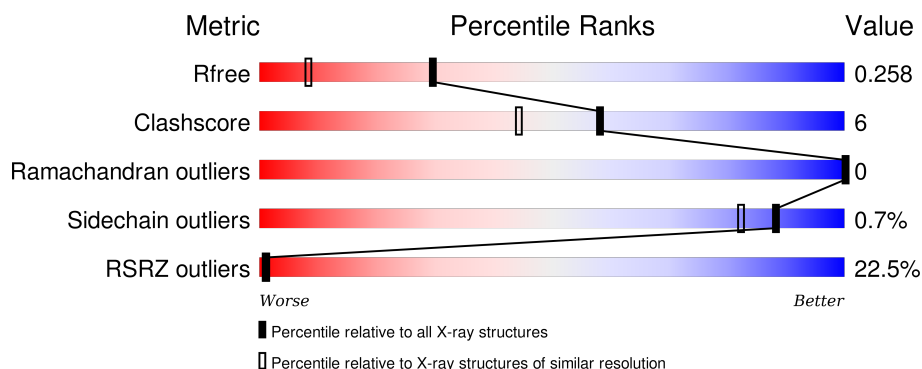
1 Overall quality at a glance

The following experimental techniques were used to determine the structure:

X-RAY DIFFRACTION

The reported resolution of this entry is 1.70 Å.

Percentile scores (ranging between 0-100) for global validation metrics of the entry are shown in the following graphic. The table shows the number of entries on which the scores are based.



Metric	Whole archive (#Entries)	Similar resolution (#Entries, resolution range(Å))
R_{free}	91344	3190 (1.70-1.70)
Clashscore	102246	3585 (1.70-1.70)
Ramachandran outliers	100387	3527 (1.70-1.70)
Sidechain outliers	100360	3527 (1.70-1.70)
RSRZ outliers	91569	3200 (1.70-1.70)

The table below summarises the geometric issues observed across the polymeric chains and their fit to the electron density. The red, orange, yellow and green segments on the lower bar indicate the fraction of residues that contain outliers for ≥ 3 , 2, 1 and 0 types of geometric quality criteria. A grey segment represents the fraction of residues that are not modelled. The numeric value for each fraction is indicated below the corresponding segment, with a dot representing fractions $\leq 5\%$. The upper red bar (where present) indicates the fraction of residues that have poor fit to the electron density. The numeric value is given above the bar.

Mol	Chain	Length	Quality of chain
1	A	255	<div> <div>20%</div> <div>88%</div> <div>10%</div> <div>..</div> </div>
1	B	255	<div> <div>24%</div> <div>86%</div> <div>9%</div> <div>.</div> </div>

2 Entry composition [i](#)

There are 5 unique types of molecules in this entry. The entry contains 4512 atoms, of which 0 are hydrogens and 0 are deuteriums.

In the tables below, the ZeroOcc column contains the number of atoms modelled with zero occupancy, the AltConf column contains the number of residues with at least one atom in alternate conformation and the Trace column contains the number of residues modelled with at most 2 atoms.

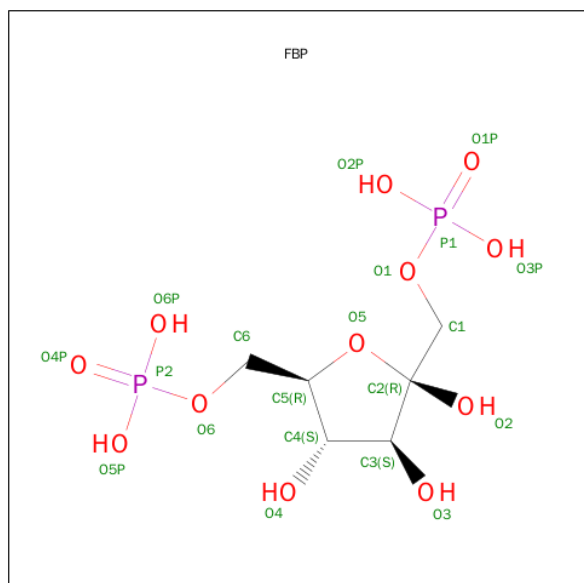
- Molecule 1 is a protein called Central glycolytic gene regulator.

Mol	Chain	Residues	Atoms					ZeroOcc	AltConf	Trace
1	A	253	Total	C	N	O	S	0	8	0
			1962	1229	343	380	10			
1	B	245	Total	C	N	O	S	0	6	0
			1881	1178	326	366	11			

There are 6 discrepancies between the modelled and reference sequences:

Chain	Residue	Modelled	Actual	Comment	Reference
A	86	SER	-	EXPRESSION TAG	UNP O32253
A	87	ASN	-	EXPRESSION TAG	UNP O32253
A	88	ALA	-	EXPRESSION TAG	UNP O32253
B	86	SER	-	EXPRESSION TAG	UNP O32253
B	87	ASN	-	EXPRESSION TAG	UNP O32253
B	88	ALA	-	EXPRESSION TAG	UNP O32253

- Molecule 2 is SUGAR (FRUCTOSE-1,6-DIPHOSPHATE) (three-letter code: FBP) (formula: C₆H₁₄O₁₂P₂).

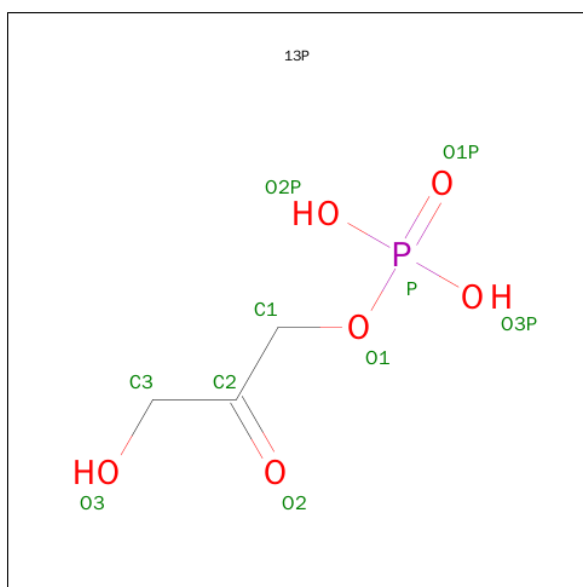


Mol	Chain	Residues	Atoms				ZeroOcc	AltConf
2	A	1	Total	C	O	P	0	0
			20	6	12	2		

- Molecule 3 is CHLORIDE ION (three-letter code: CL) (formula: Cl).

Mol	Chain	Residues	Atoms		ZeroOcc	AltConf
3	B	4	Total	Cl	0	0
			4	4		

- Molecule 4 is 1,3-DIHYDROXYACETONEPHOSPHATE (three-letter code: 13P) (formula: C₃H₇O₆P).



Mol	Chain	Residues	Atoms				ZeroOcc	AltConf
4	B	1	Total	C	O	P	0	0
			10	3	6	1		

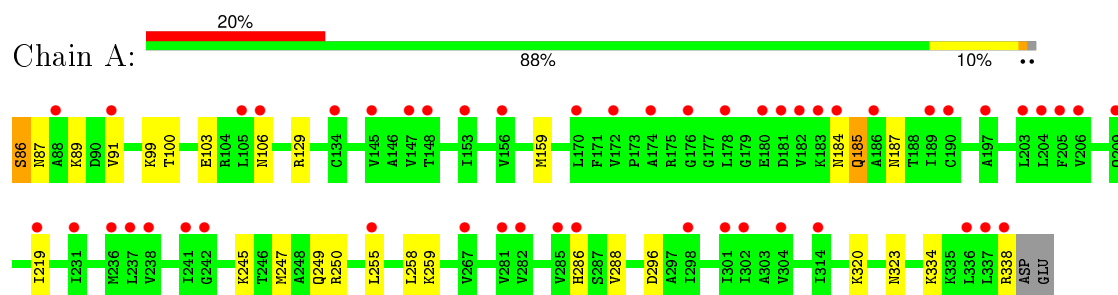
- Molecule 5 is water.

Mol	Chain	Residues	Atoms		ZeroOcc	AltConf
5	A	362	Total	O	0	0
			362	362		
5	B	273	Total	O	0	0
			273	273		

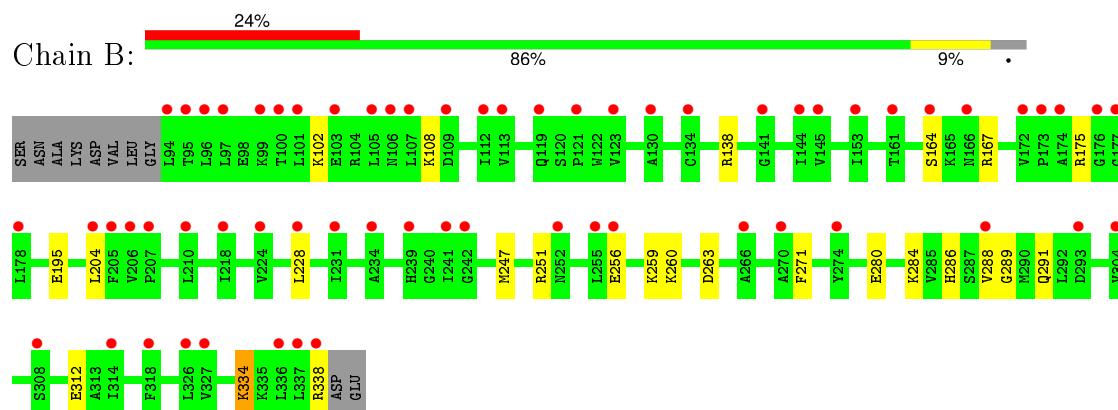
3 Residue-property plots [i](#)

These plots are drawn for all protein, RNA and DNA chains in the entry. The first graphic for a chain summarises the proportions of errors displayed in the second graphic. The second graphic shows the sequence view annotated by issues in geometry and electron density. Residues are color-coded according to the number of geometric quality criteria for which they contain at least one outlier: green = 0, yellow = 1, orange = 2 and red = 3 or more. A red dot above a residue indicates a poor fit to the electron density ($\text{RSRZ} > 2$). Stretches of 2 or more consecutive residues without any outlier are shown as a green connector. Residues present in the sample, but not in the model, are shown in grey.

- Molecule 1: Central glycolytic gene regulator



- Molecule 1: Central glycolytic gene regulator



4 Data and refinement statistics

Property	Value	Source
Space group	P 21 21 21	Depositor
Cell constants a, b, c, α , β , γ	51.45Å 83.25Å 116.46Å 90.00° 90.00° 90.00°	Depositor
Resolution (Å)	22.64 – 1.70 22.64 – 1.70	Depositor EDS
% Data completeness (in resolution range)	96.3 (22.64-1.70) 96.4 (22.64-1.70)	Depositor EDS
R_{merge}	0.07	Depositor
R_{sym}	(Not available)	Depositor
$\langle I/\sigma(I) \rangle$ ¹	2.29 (at 1.71Å)	Xtriage
Refinement program	REFMAC 5.3.0037	Depositor
R, R_{free}	0.201 , 0.257 0.203 , 0.258	Depositor DCC
R_{free} test set	2727 reflections (5.35%)	DCC
Wilson B-factor (Å ²)	18.8	Xtriage
Anisotropy	0.037	Xtriage
Bulk solvent k_{sol} (e/Å ³), B_{sol} (Å ²)	0.32 , 35.0	EDS
Estimated twinning fraction	No twinning to report.	Xtriage
L-test for twinning ²	$\langle L \rangle = 0.50$, $\langle L^2 \rangle = 0.33$	Xtriage
Outliers	4 of 53668 reflections (0.007%)	Xtriage
F_o, F_c correlation	0.93	EDS
Total number of atoms	4512	wwPDB-VP
Average B, all atoms (Å ²)	31.0	wwPDB-VP

Xtriage's analysis on translational NCS is as follows: *The largest off-origin peak in the Patterson function is 5.67% of the height of the origin peak. No significant pseudotranslation is detected.*

¹Intensities estimated from amplitudes.

²Theoretical values of $\langle |L| \rangle$, $\langle L^2 \rangle$ for acentric reflections are 0.5, 0.375 respectively for untwinned datasets, and 0.333, 0.2 for perfectly twinned datasets.

5 Model quality

5.1 Standard geometry

Bond lengths and bond angles in the following residue types are not validated in this section: FBP, 13P, CL

The Z score for a bond length (or angle) is the number of standard deviations the observed value is removed from the expected value. A bond length (or angle) with $|Z| > 5$ is considered an outlier worth inspection. RMSZ is the root-mean-square of all Z scores of the bond lengths (or angles).

Mol	Chain	Bond lengths		Bond angles	
		RMSZ	$\# Z > 5$	RMSZ	$\# Z > 5$
1	A	0.60	0/2001	0.67	0/2696
1	B	0.78	6/1920 (0.3%)	0.70	4/2586 (0.2%)
All	All	0.69	6/3921 (0.2%)	0.68	4/5282 (0.1%)

Chiral center outliers are detected by calculating the chiral volume of a chiral center and verifying if the center is modelled as a planar moiety or with the opposite hand. A planarity outlier is detected by checking planarity of atoms in a peptide group, atoms in a mainchain group or atoms of a sidechain that are expected to be planar.

Mol	Chain	#Chirality outliers	#Planarity outliers
1	A	0	1

All (6) bond length outliers are listed below:

Mol	Chain	Res	Type	Atoms	Z	Observed(Å)	Ideal(Å)
1	B	167	ARG	CZ-NH1	15.96	1.53	1.33
1	B	334	LYS	CD-CE	14.39	1.87	1.51
1	B	334	LYS	CG-CD	6.20	1.73	1.52
1	B	164	SER	CB-OG	6.02	1.50	1.42
1	B	167	ARG	CZ-NH2	-5.84	1.25	1.33
1	B	334	LYS	CE-NZ	5.74	1.63	1.49

All (4) bond angle outliers are listed below:

Mol	Chain	Res	Type	Atoms	Z	Observed(°)	Ideal(°)
1	B	338	ARG	NE-CZ-NH1	12.14	126.37	120.30
1	B	334	LYS	CD-CE-NZ	-7.68	94.03	111.70
1	B	334	LYS	CG-CD-CE	-6.91	91.17	111.90
1	B	338	ARG	NE-CZ-NH2	-5.42	117.59	120.30

There are no chirality outliers.

All (1) planarity outliers are listed below:

Mol	Chain	Res	Type	Group
1	A	86	SER	Peptide

5.2 Too-close contacts ⓘ

In the following table, the Non-H and H(model) columns list the number of non-hydrogen atoms and hydrogen atoms in the chain respectively. The H(added) column lists the number of hydrogen atoms added and optimized by MolProbity. The Clashes column lists the number of clashes within the asymmetric unit, whereas Symm-Clashes lists symmetry related clashes.

Mol	Chain	Non-H	H(model)	H(added)	Clashes	Symm-Clashes
1	A	1962	0	2021	27	0
1	B	1881	0	1933	19	0
2	A	20	0	10	0	0
3	B	4	0	0	0	0
4	B	10	0	5	0	0
5	A	362	0	0	16	0
5	B	273	0	0	9	0
All	All	4512	0	3969	46	0

The all-atom clashscore is defined as the number of clashes found per 1000 atoms (including hydrogen atoms). The all-atom clashscore for this structure is 6.

All (46) close contacts within the same asymmetric unit are listed below, sorted by their clash magnitude.

Atom-1	Atom-2	Interatomic distance (Å)	Clash overlap (Å)
1:B:334:LYS:CE	1:B:334:LYS:CD	1.87	1.53
1:A:106[B]:ASN:HB2	5:A:512:HOH:O	1.55	1.04
1:A:106[A]:ASN:HB2	5:A:755:HOH:O	1.68	0.93
1:B:284:LYS:HG3	5:B:838:HOH:O	1.74	0.87
1:B:334:LYS:CE	1:B:334:LYS:CG	2.57	0.81
1:A:106[A]:ASN:CB	5:A:755:HOH:O	2.24	0.80
1:B:195:GLU:HG2	5:B:756:HOH:O	1.84	0.77
1:A:219[A]:ILE:HD11	1:A:288:VAL:HG11	1.69	0.74
1:B:312:GLU:HG3	5:B:751:HOH:O	1.92	0.69
1:B:334:LYS:CD	1:B:334:LYS:NZ	2.56	0.68
1:A:245:LYS:O	1:A:249:GLN:HG3	1.96	0.64
1:A:320:LYS:HD2	5:A:666:HOH:O	1.96	0.64
1:B:280:GLU:HG2	5:B:837:HOH:O	1.99	0.63

Continued on next page...

Continued from previous page...

Atom-1	Atom-2	Interatomic distance (Å)	Clash overlap (Å)
1:A:106[B]:ASN:O	5:A:695:HOH:O	2.16	0.63
1:A:100[B]:THR:HG22	5:A:463:HOH:O	1.99	0.62
1:B:204:LEU:HD23	5:B:826:HOH:O	1.99	0.61
1:B:175[B]:ARG:C	5:B:848:HOH:O	2.41	0.59
1:B:175[A]:ARG:HD3	1:B:271:PHE:O	2.03	0.59
1:B:259:LYS:NZ	1:B:263:ASP:OD2	2.25	0.58
1:A:106[A]:ASN:ND2	5:A:755:HOH:O	2.29	0.58
1:A:334:LYS:O	1:A:338:ARG:HG3	2.05	0.57
1:A:247:MET:HE1	1:A:250[A]:ARG:HH11	1.70	0.57
1:A:184:ASN:O	1:A:187:ASN:HB2	2.06	0.55
1:B:289:GLY:O	1:B:291:GLN:NE2	2.40	0.54
1:A:245:LYS:HG2	5:A:665:HOH:O	2.08	0.53
1:A:89:LYS:NZ	5:A:616:HOH:O	2.40	0.53
1:B:228:LEU:HD11	1:B:288:VAL:HG21	1.92	0.51
1:A:259:LYS:NZ	5:A:595:HOH:O	2.43	0.50
1:A:184:ASN:CA	5:A:754:HOH:O	2.61	0.49
1:B:138:ARG:NH1	5:B:720:HOH:O	2.45	0.49
1:B:256:GLU:HG2	1:B:260:LYS:HE3	1.94	0.48
1:A:129:ARG:HA	1:A:159:MET:HE2	1.96	0.48
1:A:323:ASN:HB2	5:A:470:HOH:O	2.14	0.48
1:A:185:GLN:HB2	5:A:464:HOH:O	2.16	0.45
1:A:255:LEU:HD23	1:A:258:LEU:HD12	2.00	0.44
1:B:247:MET:HE2	1:B:251:ARG:CZ	2.49	0.43
1:A:184:ASN:C	5:A:754:HOH:O	2.58	0.42
1:A:129:ARG:HG3	1:A:159:MET:CE	2.50	0.41
1:A:286:HIS:HA	5:A:680:HOH:O	2.20	0.41
1:A:184:ASN:HA	5:A:754:HOH:O	2.18	0.41
1:B:102:LYS:HE2	1:B:108:LYS:O	2.20	0.41
1:B:286:HIS:HD2	5:B:871:HOH:O	2.02	0.41
1:A:99:LYS:NZ	1:A:103:GLU:OE2	2.54	0.41
1:A:87:ASN:O	1:A:91[A]:VAL:HG23	2.21	0.41
1:B:284:LYS:CG	5:B:838:HOH:O	2.51	0.41
1:A:219[A]:ILE:HD11	1:A:288:VAL:CG1	2.45	0.41

There are no symmetry-related clashes.

5.3 Torsion angles

5.3.1 Protein backbone

In the following table, the Percentiles column shows the percent Ramachandran outliers of the chain as a percentile score with respect to all X-ray entries followed by that with respect to entries of similar resolution.

The Analysed column shows the number of residues for which the backbone conformation was analysed, and the total number of residues.

Mol	Chain	Analysed	Favoured	Allowed	Outliers	Percentiles	
1	A	259/255 (102%)	257 (99%)	2 (1%)	0	100	100
1	B	249/255 (98%)	246 (99%)	3 (1%)	0	100	100
All	All	508/510 (100%)	503 (99%)	5 (1%)	0	100	100

There are no Ramachandran outliers to report.

5.3.2 Protein sidechains

In the following table, the Percentiles column shows the percent sidechain outliers of the chain as a percentile score with respect to all X-ray entries followed by that with respect to entries of similar resolution.

The Analysed column shows the number of residues for which the sidechain conformation was analysed, and the total number of residues.

Mol	Chain	Analysed	Rotameric	Outliers	Percentiles	
1	A	213/207 (103%)	210 (99%)	3 (1%)	74	59
1	B	205/207 (99%)	205 (100%)	0	100	100
All	All	418/414 (101%)	415 (99%)	3 (1%)	88	82

All (3) residues with a non-rotameric sidechain are listed below:

Mol	Chain	Res	Type
1	A	86	SER
1	A	185	GLN
1	A	296	ASP

Some sidechains can be flipped to improve hydrogen bonding and reduce clashes. All (2) such sidechains are listed below:

Mol	Chain	Res	Type
1	B	264	ASN
1	B	286	HIS

5.3.3 RNA [i](#)

There are no RNA molecules in this entry.

5.4 Non-standard residues in protein, DNA, RNA chains [i](#)

There are no non-standard protein/DNA/RNA residues in this entry.

5.5 Carbohydrates [i](#)

There are no carbohydrates in this entry.

5.6 Ligand geometry [i](#)

Of 6 ligands modelled in this entry, 4 are monoatomic - leaving 2 for Mogul analysis.

In the following table, the Counts columns list the number of bonds (or angles) for which Mogul statistics could be retrieved, the number of bonds (or angles) that are observed in the model and the number of bonds (or angles) that are defined in the chemical component dictionary. The Link column lists molecule types, if any, to which the group is linked. The Z score for a bond length (or angle) is the number of standard deviations the observed value is removed from the expected value. A bond length (or angle) with $|Z| > 2$ is considered an outlier worth inspection. RMSZ is the root-mean-square of all Z scores of the bond lengths (or angles).

Mol	Type	Chain	Res	Link	Bond lengths			Bond angles		
					Counts	RMSZ	# $ Z > 2$	Counts	RMSZ	# $ Z > 2$
2	FBP	A	401	-	18,20,20	0.93	1 (5%)	21,32,32	0.82	0
4	13P	B	401	-	9,9,9	0.83	0	9,12,12	1.52	1 (11%)

In the following table, the Chirals column lists the number of chiral outliers, the number of chiral centers analysed, the number of these observed in the model and the number defined in the chemical component dictionary. Similar counts are reported in the Torsion and Rings columns. '-' means no outliers of that kind were identified.

Mol	Type	Chain	Res	Link	Chirals	Torsions	Rings
2	FBP	A	401	-	-	0/13/32/32	0/1/1/1
4	13P	B	401	-	-	0/7/8/8	0/0/0/0

All (1) bond length outliers are listed below:

Mol	Chain	Res	Type	Atoms	Z	Observed(Å)	Ideal(Å)
2	A	401	FBP	O2-C2	2.54	1.45	1.41

All (1) bond angle outliers are listed below:

Mol	Chain	Res	Type	Atoms	Z	Observed(°)	Ideal(°)
4	B	401	13P	O3P-P-O2P	3.71	121.49	107.38

There are no chirality outliers.

There are no torsion outliers.

There are no ring outliers.

No monomer is involved in short contacts.

5.7 Other polymers [i](#)

There are no such residues in this entry.

5.8 Polymer linkage issues [i](#)

There are no chain breaks in this entry.

6 Fit of model and data ⓘ

6.1 Protein, DNA and RNA chains ⓘ

In the following table, the column labelled ‘#RSRZ> 2’ contains the number (and percentage) of RSRZ outliers, followed by percent RSRZ outliers for the chain as percentile scores relative to all X-ray entries and entries of similar resolution. The OWAB column contains the minimum, median, 95th percentile and maximum values of the occupancy-weighted average B-factor per residue. The column labelled ‘Q< 0.9’ lists the number of (and percentage) of residues with an average occupancy less than 0.9.

Mol	Chain	Analysed	<RSRZ>	#RSRZ>2		OWAB(Å ²)	Q<0.9
1	A	253/255 (99%)	1.37	50 (19%)	1 1	25, 30, 33, 37	11 (4%)
1	B	245/255 (96%)	1.47	62 (25%)	1 1	27, 30, 34, 37	5 (2%)
All	All	498/510 (97%)	1.42	112 (22%)	1 1	25, 30, 34, 37	16 (3%)

All (112) RSRZ outliers are listed below:

Mol	Chain	Res	Type	RSRZ
1	A	170	LEU	6.0
1	A	182	VAL	5.2
1	A	178	LEU	5.1
1	B	113	VAL	4.6
1	B	96	LEU	4.4
1	A	145	VAL	4.3
1	B	231	ILE	4.3
1	A	183	LYS	4.3
1	A	238	VAL	4.2
1	A	241	ILE	4.1
1	A	304	VAL	4.1
1	A	181	ASP	4.1
1	B	338	ARG	4.0
1	A	267	VAL	3.9
1	A	91[A]	VAL	3.8
1	B	252	ASN	3.7
1	A	337	LEU	3.7
1	B	106	ASN	3.6
1	B	107	LEU	3.6
1	B	164	SER	3.5
1	A	180	GLU	3.5
1	B	112	ILE	3.4
1	B	100	THR	3.4
1	B	336	LEU	3.4

Continued on next page...

Continued from previous page...

Mol	Chain	Res	Type	RSRZ
1	B	255	LEU	3.4
1	B	241	ILE	3.3
1	B	206	VAL	3.3
1	B	166	ASN	3.2
1	A	106[A]	ASN	3.2
1	B	145	VAL	3.2
1	B	105	LEU	3.2
1	B	95	THR	3.2
1	B	94	LEU	3.2
1	B	204	LEU	3.1
1	A	184	ASN	3.1
1	A	338	ARG	3.1
1	A	176	GLY	3.0
1	A	134	CYS	3.0
1	A	205	PHE	3.0
1	B	121	PRO	2.9
1	A	105	LEU	2.8
1	B	172	VAL	2.8
1	B	337	LEU	2.8
1	A	242	GLY	2.8
1	A	336	LEU	2.7
1	A	147	VAL	2.7
1	B	210	LEU	2.6
1	B	207	PRO	2.6
1	B	270	ALA	2.6
1	A	172	VAL	2.6
1	B	205	PHE	2.6
1	A	153	ILE	2.6
1	A	219[A]	ILE	2.6
1	A	302	ILE	2.6
1	B	101	LEU	2.6
1	B	218	ILE	2.5
1	B	242	GLY	2.5
1	B	326	LEU	2.5
1	B	144	ILE	2.5
1	B	109	ASP	2.5
1	B	119	GLN	2.5
1	B	224	VAL	2.5
1	B	288	VAL	2.5
1	A	186	ALA	2.4
1	A	203	LEU	2.4
1	A	301	ILE	2.4

Continued on next page...

Continued from previous page...

Mol	Chain	Res	Type	RSRZ
1	B	178	LEU	2.4
1	B	228	LEU	2.4
1	A	282	VAL	2.4
1	B	123	VAL	2.4
1	B	314	ILE	2.4
1	B	327	VAL	2.4
1	B	293	ASP	2.4
1	A	148	THR	2.4
1	B	176	GLY	2.3
1	A	236	MET	2.3
1	A	255	LEU	2.3
1	B	174	ALA	2.3
1	A	286	HIS	2.3
1	B	161	THR	2.3
1	B	274	TYR	2.3
1	A	156	VAL	2.3
1	B	141	GLY	2.3
1	A	209[A]	GLN	2.3
1	B	103	GLU	2.3
1	B	173	PRO	2.3
1	B	130	ALA	2.2
1	B	234	ALA	2.2
1	A	189	ILE	2.2
1	A	298	ILE	2.2
1	A	197	ALA	2.2
1	B	99	LYS	2.2
1	A	204	LEU	2.2
1	A	206	VAL	2.2
1	A	281	VAL	2.2
1	B	308	SER	2.2
1	B	266	ALA	2.2
1	B	304	VAL	2.2
1	B	134[A]	CYS	2.2
1	A	174	ALA	2.1
1	A	231	ILE	2.1
1	B	153	ILE	2.1
1	A	237	LEU	2.1
1	B	97	LEU	2.1
1	A	314	ILE	2.1
1	A	285	VAL	2.1
1	A	88	ALA	2.1
1	A	190	CYS	2.1

Continued on next page...

Continued from previous page...

Mol	Chain	Res	Type	RSRZ
1	B	256	GLU	2.0
1	B	318	PHE	2.0
1	B	177	GLY	2.0
1	B	239	HIS	2.0

6.2 Non-standard residues in protein, DNA, RNA chains [i](#)

There are no non-standard protein/DNA/RNA residues in this entry.

6.3 Carbohydrates [i](#)

There are no carbohydrates in this entry.

6.4 Ligands [i](#)

In the following table, the Atoms column lists the number of modelled atoms in the group and the number defined in the chemical component dictionary. LLDF column lists the quality of electron density of the group with respect to its neighbouring residues in protein, DNA or RNA chains. The B-factors column lists the minimum, median, 95th percentile and maximum values of B factors of atoms in the group. The column labelled 'Q< 0.9' lists the number of atoms with occupancy less than 0.9.

Mol	Type	Chain	Res	Atoms	RSCC	RSR	LLDF	B-factors(\AA^2)	Q<0.9
2	FBP	A	401	20/20	0.94	0.18	0.26	17,24,31,31	0
4	13P	B	401	10/10	0.94	0.16	-0.07	25,28,31,31	0
3	CL	B	502	1/1	0.98	0.13	-1.36	28,28,28,28	0
3	CL	B	504	1/1	0.98	0.09	-2.09	27,27,27,27	0
3	CL	B	501	1/1	0.98	0.08	-3.73	24,24,24,24	0
3	CL	B	503	1/1	0.98	0.13	-	35,35,35,35	0

6.5 Other polymers [i](#)

There are no such residues in this entry.