



Full wwPDB X-ray Structure Validation Report ⓘ

Feb 19, 2016 – 10:02 PM GMT

PDB ID : 5C2H
Title : PDE10 complexed with 6-chloro-N-[(2,4-dimethylthiazol-5-yl)methyl]-5-methyl-2-[3-(2-quinolyl)propoxy]pyrimidin-4-amine
Authors : Yan, Y.
Deposited on : 2015-06-15
Resolution : 2.09 Å(reported)

This is a Full wwPDB X-ray Structure Validation Report for a publicly released PDB entry.
We welcome your comments at validation@mail.wwpdb.org
A user guide is available at
<http://wwpdb.org/validation/2016/XrayValidationReportHelp>
with specific help available everywhere you see the ⓘ symbol.

The following versions of software and data (see [references ⓘ](#)) were used in the production of this report:

MolProbity : 4.02b-467
Mogul : 1.7.1 (RC1), CSD as537be (2016)
Xtriage (Phenix) : 1.9-1692
EDS : rb-20026982
Percentile statistics : 20151230.v01 (using entries in the PDB archive December 30th 2015)
Refmac : 5.8.0135
CCP4 : 6.5.0
Ideal geometry (proteins) : Engh & Huber (2001)
Ideal geometry (DNA, RNA) : Parkinson et al. (1996)
Validation Pipeline (wwPDB-VP) : rb-20026982

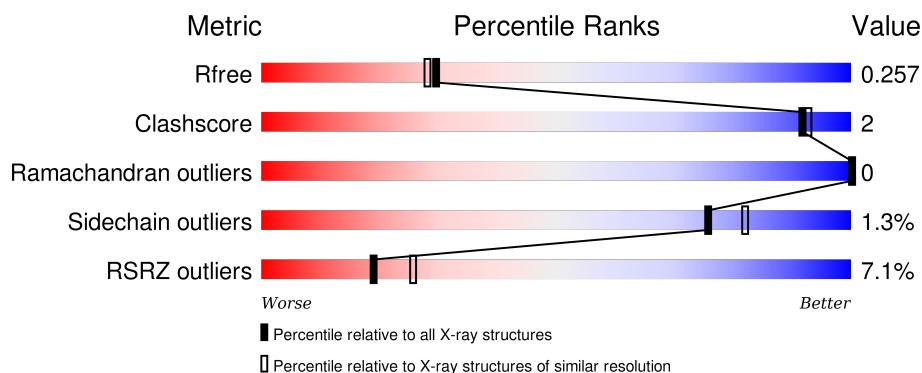
1 Overall quality at a glance

The following experimental techniques were used to determine the structure:

X-RAY DIFFRACTION

The reported resolution of this entry is 2.09 Å.

Percentile scores (ranging between 0-100) for global validation metrics of the entry are shown in the following graphic. The table shows the number of entries on which the scores are based.



Metric	Whole archive (#Entries)	Similar resolution (#Entries, resolution range(Å))
R_{free}	91344	3939 (2.10-2.10)
Clashscore	102246	4460 (2.10-2.10)
Ramachandran outliers	100387	4413 (2.10-2.10)
Sidechain outliers	100360	4414 (2.10-2.10)
RSRZ outliers	91569	3948 (2.10-2.10)

The table below summarises the geometric issues observed across the polymeric chains and their fit to the electron density. The red, orange, yellow and green segments on the lower bar indicate the fraction of residues that contain outliers for ≥ 3 , 2, 1 and 0 types of geometric quality criteria. A grey segment represents the fraction of residues that are not modelled. The numeric value for each fraction is indicated below the corresponding segment, with a dot representing fractions $\leq 5\%$. The upper red bar (where present) indicates the fraction of residues that have poor fit to the electron density. The numeric value is given above the bar.

Mol	Chain	Length	Quality of chain
1	A	362	<div> <div>6%</div> <div>81%</div> <div>15%</div> </div>
1	B	362	<div> <div>6%</div> <div>82%</div> <div>7%</div> <div>11%</div> </div>

2 Entry composition

There are 6 unique types of molecules in this entry. The entry contains 5173 atoms, of which 0 are hydrogens and 0 are deuteriums.

In the tables below, the ZeroOcc column contains the number of atoms modelled with zero occupancy, the AltConf column contains the number of residues with at least one atom in alternate conformation and the Trace column contains the number of residues modelled with at most 2 atoms.

- Molecule 1 is a protein called cAMP and cAMP-inhibited cGMP 3',5'-cyclic phosphodiesterase 10A.

Mol	Chain	Residues	Atoms					ZeroOcc	AltConf	Trace
1	A	308	Total	C	N	O	S	0	0	0
			2464	1579	419	444	22			
1	B	322	Total	C	N	O	S	0	0	0
			2586	1654	439	468	25			

There are 42 discrepancies between the modelled and reference sequences:

Chain	Residue	Modelled	Actual	Comment	Reference
A	418	MET	-	initiating methionine	UNP Q9Y233
A	419	GLY	-	expression tag	UNP Q9Y233
A	420	SER	-	expression tag	UNP Q9Y233
A	421	SER	-	expression tag	UNP Q9Y233
A	422	HIS	-	expression tag	UNP Q9Y233
A	423	HIS	-	expression tag	UNP Q9Y233
A	424	HIS	-	expression tag	UNP Q9Y233
A	425	HIS	-	expression tag	UNP Q9Y233
A	426	HIS	-	expression tag	UNP Q9Y233
A	427	HIS	-	expression tag	UNP Q9Y233
A	428	SER	-	expression tag	UNP Q9Y233
A	429	SER	-	expression tag	UNP Q9Y233
A	430	GLY	-	expression tag	UNP Q9Y233
A	431	LEU	-	expression tag	UNP Q9Y233
A	432	VAL	-	expression tag	UNP Q9Y233
A	433	PRO	-	expression tag	UNP Q9Y233
A	434	ARG	-	expression tag	UNP Q9Y233
A	435	GLY	-	expression tag	UNP Q9Y233
A	436	SER	-	expression tag	UNP Q9Y233
A	437	HIS	-	expression tag	UNP Q9Y233
A	438	MET	-	expression tag	UNP Q9Y233
B	418	MET	-	initiating methionine	UNP Q9Y233
B	419	GLY	-	expression tag	UNP Q9Y233
B	420	SER	-	expression tag	UNP Q9Y233

Continued on next page...

Continued from previous page...

Chain	Residue	Modelled	Actual	Comment	Reference
B	421	SER	-	expression tag	UNP Q9Y233
B	422	HIS	-	expression tag	UNP Q9Y233
B	423	HIS	-	expression tag	UNP Q9Y233
B	424	HIS	-	expression tag	UNP Q9Y233
B	425	HIS	-	expression tag	UNP Q9Y233
B	426	HIS	-	expression tag	UNP Q9Y233
B	427	HIS	-	expression tag	UNP Q9Y233
B	428	SER	-	expression tag	UNP Q9Y233
B	429	SER	-	expression tag	UNP Q9Y233
B	430	GLY	-	expression tag	UNP Q9Y233
B	431	LEU	-	expression tag	UNP Q9Y233
B	432	VAL	-	expression tag	UNP Q9Y233
B	433	PRO	-	expression tag	UNP Q9Y233
B	434	ARG	-	expression tag	UNP Q9Y233
B	435	GLY	-	expression tag	UNP Q9Y233
B	436	SER	-	expression tag	UNP Q9Y233
B	437	HIS	-	expression tag	UNP Q9Y233
B	438	MET	-	expression tag	UNP Q9Y233

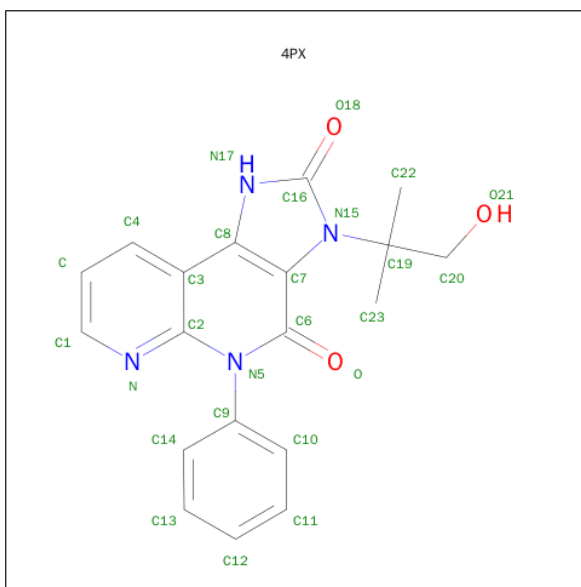
- Molecule 2 is ZINC ION (three-letter code: ZN) (formula: Zn).

Mol	Chain	Residues	Atoms	ZeroOcc	AltConf
2	B	1	Total Zn 1 1	0	0
2	A	1	Total Zn 1 1	0	0

- Molecule 3 is MAGNESIUM ION (three-letter code: MG) (formula: Mg).

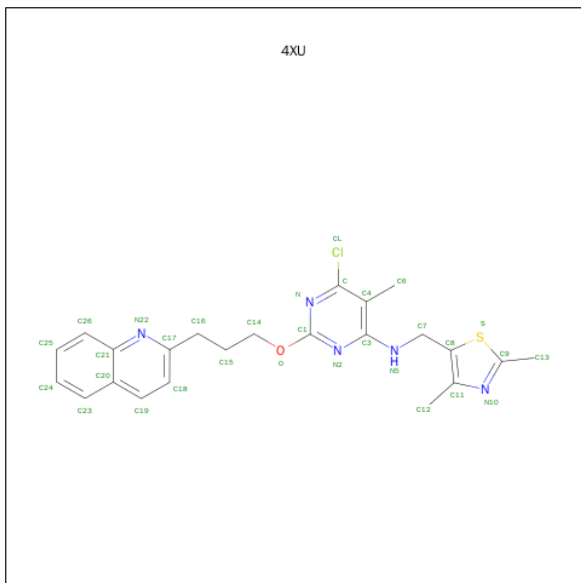
Mol	Chain	Residues	Atoms	ZeroOcc	AltConf
3	B	1	Total Mg 1 1	0	0
3	A	1	Total Mg 1 1	0	0

- Molecule 4 is 3-(1-hydroxy-2-methylpropan-2-yl)-5-phenyl-3,5-dihydro-1H-imidazo[4,5-c][1,8]naphthyridine-2,4-dione (three-letter code: 4PX) (formula: C₁₉H₁₈N₄O₃).



Mol	Chain	Residues	Atoms				ZeroOcc	AltConf
4	A	1	Total	C	N	O	0	0
			26	19	4	3		

- Molecule 5 is 6-chloro-N-[(2,4-dimethyl-1,3-thiazol-5-yl)methyl]-5-methyl-2-[3-(quinolin-2-yl)propoxy]pyrimidin-4-amine (three-letter code: 4XU) (formula: $C_{23}H_{24}ClN_5OS$).



Mol	Chain	Residues	Atoms					ZeroOcc	AltConf
5	B	1	Total	C	Cl	N	O	S	0
			31	23	1	5	1	1	0

- Molecule 6 is water.

Mol	Chain	Residues	Atoms		ZeroOcc	AltConf
6	A	37	Total 37	O 37	0	0
6	B	25	Total 25	O 25	0	0

4 Data and refinement statistics

Property	Value	Source
Space group	P 21 21 21	Depositor
Cell constants a, b, c, α , β , γ	49.66 Å 81.28 Å 157.10 Å 90.00° 90.00° 90.00°	Depositor
Resolution (Å)	36.10 – 2.09 36.10 – 2.09	Depositor EDS
% Data completeness (in resolution range)	87.7 (36.10-2.09) 87.7 (36.10-2.09)	Depositor EDS
R_{merge}	0.05	Depositor
R_{sym}	(Not available)	Depositor
$\langle I/\sigma(I) \rangle$ ¹	3.35 (at 2.10 Å)	Xtriage
Refinement program	BUSTER-TNT	Depositor
R, R_{free}	0.207 , 0.240 0.219 , 0.257	Depositor DCC
R_{free} test set	1701 reflections (5.30%)	DCC
Wilson B-factor (Å ²)	35.3	Xtriage
Anisotropy	0.645	Xtriage
Bulk solvent k_{sol} (e/Å ³), B_{sol} (Å ²)	0.36 , 47.1	EDS
Estimated twinning fraction	No twinning to report.	Xtriage
L-test for twinning ²	$\langle L \rangle = 0.45$, $\langle L^2 \rangle = 0.27$	Xtriage
Outliers	0 of 33767 reflections	Xtriage
F_o, F_c correlation	0.95	EDS
Total number of atoms	5173	wwPDB-VP
Average B, all atoms (Å ²)	47.0	wwPDB-VP

Xtriage's analysis on translational NCS is as follows: *The largest off-origin peak in the Patterson function is 3.60% of the height of the origin peak. No significant pseudotranslation is detected.*

¹Intensities estimated from amplitudes.

²Theoretical values of $\langle |L| \rangle$, $\langle L^2 \rangle$ for acentric reflections are 0.5, 0.375 respectively for untwinned datasets, and 0.333, 0.2 for perfectly twinned datasets.

5 Model quality

5.1 Standard geometry

Bond lengths and bond angles in the following residue types are not validated in this section: 4XU, MG, ZN, 4PX

The Z score for a bond length (or angle) is the number of standard deviations the observed value is removed from the expected value. A bond length (or angle) with $|Z| > 5$ is considered an outlier worth inspection. RMSZ is the root-mean-square of all Z scores of the bond lengths (or angles).

Mol	Chain	Bond lengths		Bond angles	
		RMSZ	# Z >5	RMSZ	# Z >5
1	A	0.50	0/2526	0.61	0/3426
1	B	0.51	0/2651	0.62	0/3594
All	All	0.50	0/5177	0.61	0/7020

There are no bond length outliers.

There are no bond angle outliers.

There are no chirality outliers.

There are no planarity outliers.

5.2 Too-close contacts

In the following table, the Non-H and H(model) columns list the number of non-hydrogen atoms and hydrogen atoms in the chain respectively. The H(added) column lists the number of hydrogen atoms added and optimized by MolProbity. The Clashes column lists the number of clashes within the asymmetric unit, whereas Symm-Clashes lists symmetry related clashes.

Mol	Chain	Non-H	H(model)	H(added)	Clashes	Symm-Clashes
1	A	2464	0	2410	6	0
1	B	2586	0	2531	14	0
2	A	1	0	0	0	0
2	B	1	0	0	0	0
3	A	1	0	0	0	0
3	B	1	0	0	0	0
4	A	26	0	18	1	0
5	B	31	0	24	0	0
6	A	37	0	0	0	0
6	B	25	0	0	0	0
All	All	5173	0	4983	21	0

The all-atom clashscore is defined as the number of clashes found per 1000 atoms (including hydrogen atoms). The all-atom clashscore for this structure is 2.

All (21) close contacts within the same asymmetric unit are listed below, sorted by their clash magnitude.

Atom-1	Atom-2	Interatomic distance (Å)	Clash overlap (Å)
1:B:440:ILE:HG22	1:B:595:LEU:HD13	1.47	0.96
1:A:645:ASN:H	1:A:651:HIS:HD2	1.28	0.81
1:B:488:CYS:HB3	1:B:492:CYS:SG	2.37	0.64
1:A:645:ASN:H	1:A:651:HIS:CD2	2.15	0.61
1:B:462:ILE:HD11	1:B:479:ILE:HG23	1.89	0.53
1:B:706:ARG:O	1:B:709:LYS:HG3	2.10	0.51
1:A:699:GLN:OE1	1:A:700:PRO:HD2	2.12	0.49
1:B:473:GLU:HA	1:B:476:TRP:CE2	2.47	0.48
1:B:449:LEU:HD13	1:B:477:PRO:HB2	1.95	0.48
1:B:717:LEU:HD11	1:B:753:GLU:HG2	1.96	0.48
1:A:473:GLU:HA	1:A:476:TRP:CE2	2.49	0.47
1:A:706:ARG:O	1:A:709:LYS:HG3	2.13	0.47
1:A:717:LEU:HD22	1:A:756:ILE:HD13	1.97	0.47
1:B:568:PHE:HE2	1:B:698:ILE:HD13	1.81	0.46
1:B:462:ILE:HG21	1:B:482:TYR:CE2	2.51	0.44
4:A:903:4PX:O	4:A:903:4PX:H14	2.18	0.44
1:B:568:PHE:CE2	1:B:698:ILE:HD13	2.52	0.43
1:B:541:LEU:HD12	1:B:541:LEU:HA	1.94	0.42
1:B:717:LEU:HD12	1:B:749:LEU:HD12	2.01	0.41
1:B:554:ASP:O	1:B:557:HIS:HB2	2.21	0.41
1:B:601:PHE:HB3	1:B:604:LEU:HD12	2.02	0.41

There are no symmetry-related clashes.

5.3 Torsion angles [i](#)

5.3.1 Protein backbone [i](#)

In the following table, the Percentiles column shows the percent Ramachandran outliers of the chain as a percentile score with respect to all X-ray entries followed by that with respect to entries of similar resolution.

The Analysed column shows the number of residues for which the backbone conformation was analysed, and the total number of residues.

Mol	Chain	Analysed	Favoured	Allowed	Outliers	Percentiles	
1	A	306/362 (84%)	290 (95%)	16 (5%)	0	100	100

Continued on next page...

Continued from previous page...

Mol	Chain	Analysed	Favoured	Allowed	Outliers	Percentiles	
1	B	320/362 (88%)	306 (96%)	14 (4%)	0	100	100
All	All	626/724 (86%)	596 (95%)	30 (5%)	0	100	100

There are no Ramachandran outliers to report.

5.3.2 Protein sidechains ⓘ

In the following table, the Percentiles column shows the percent sidechain outliers of the chain as a percentile score with respect to all X-ray entries followed by that with respect to entries of similar resolution.

The Analysed column shows the number of residues for which the sidechain conformation was analysed, and the total number of residues.

Mol	Chain	Analysed	Rotameric	Outliers	Percentiles	
1	A	269/323 (83%)	266 (99%)	3 (1%)	80	85
1	B	285/323 (88%)	281 (99%)	4 (1%)	74	80
All	All	554/646 (86%)	547 (99%)	7 (1%)	76	82

All (7) residues with a non-rotameric sidechain are listed below:

Mol	Chain	Res	Type
1	A	606	SER
1	A	607	SER
1	A	743	LYS
1	B	486	ARG
1	B	488	CYS
1	B	575	LEU
1	B	606	SER

Some sidechains can be flipped to improve hydrogen bonding and reduce clashes. All (2) such sidechains are listed below:

Mol	Chain	Res	Type
1	A	651	HIS
1	B	647	ASN

5.3.3 RNA ⓘ

There are no RNA molecules in this entry.

5.4 Non-standard residues in protein, DNA, RNA chains ⓘ

There are no non-standard protein/DNA/RNA residues in this entry.

5.5 Carbohydrates ⓘ

There are no carbohydrates in this entry.

5.6 Ligand geometry ⓘ

Of 6 ligands modelled in this entry, 4 are monoatomic - leaving 2 for Mogul analysis.

In the following table, the Counts columns list the number of bonds (or angles) for which Mogul statistics could be retrieved, the number of bonds (or angles) that are observed in the model and the number of bonds (or angles) that are defined in the chemical component dictionary. The Link column lists molecule types, if any, to which the group is linked. The Z score for a bond length (or angle) is the number of standard deviations the observed value is removed from the expected value. A bond length (or angle) with $|Z| > 2$ is considered an outlier worth inspection. RMSZ is the root-mean-square of all Z scores of the bond lengths (or angles).

Mol	Type	Chain	Res	Link	Bond lengths			Bond angles		
					Counts	RMSZ	$\# Z > 2$	Counts	RMSZ	$\# Z > 2$
4	4PX	A	903	-	25,29,29	1.69	6 (24%)	26,44,44	1.60	5 (19%)
5	4XU	B	803	-	32,34,34	1.68	7 (21%)	33,47,47	2.15	10 (30%)

In the following table, the Chirals column lists the number of chiral outliers, the number of chiral centers analysed, the number of these observed in the model and the number defined in the chemical component dictionary. Similar counts are reported in the Torsion and Rings columns. '-' means no outliers of that kind were identified.

Mol	Type	Chain	Res	Link	Chirals	Torsions	Rings
4	4PX	A	903	-	-	0/11/13/13	0/4/4/4
5	4XU	B	803	-	-	0/10/12/12	0/4/4/4

All (13) bond length outliers are listed below:

Mol	Chain	Res	Type	Atoms	Z	Observed(Å)	Ideal(Å)
4	A	903	4PX	C9-N5	-3.76	1.40	1.46
4	A	903	4PX	C7-C8	-2.99	1.33	1.43
5	B	803	4XU	C4-C3	-2.42	1.37	1.42
4	A	903	4PX	C3-C2	-2.29	1.38	1.40
5	B	803	4XU	C-C4	-2.24	1.38	1.41
5	B	803	4XU	C8-C11	-2.20	1.38	1.42

Continued on next page...

Continued from previous page...

Mol	Chain	Res	Type	Atoms	Z	Observed(Å)	Ideal(Å)
4	A	903	4PX	C19-N15	-2.16	1.48	1.51
5	B	803	4XU	C26-C21	-2.02	1.38	1.41
5	B	803	4XU	C-CL	-2.01	1.70	1.74
4	A	903	4PX	C16-N17	3.56	1.38	1.34
5	B	803	4XU	O-C1	4.01	1.38	1.34
4	A	903	4PX	C6-C7	4.11	1.48	1.40
5	B	803	4XU	C3-N5	5.24	1.42	1.34

All (15) bond angle outliers are listed below:

Mol	Chain	Res	Type	Atoms	Z	Observed(°)	Ideal(°)
5	B	803	4XU	C7-N5-C3	-7.10	113.90	123.20
5	B	803	4XU	C14-O-C1	-5.19	111.21	118.03
5	B	803	4XU	C1-N-C	-3.61	111.33	115.32
4	A	903	4PX	C3-C2-N5	-2.52	117.45	122.21
5	B	803	4XU	C4-C3-N2	-2.42	119.62	123.08
5	B	803	4XU	C16-C17-C18	-2.21	117.23	121.75
4	A	903	4PX	C16-N15-C19	-2.17	125.98	127.67
5	B	803	4XU	C19-C20-C23	-2.08	118.34	123.20
5	B	803	4XU	C23-C20-C21	2.10	121.70	118.45
5	B	803	4XU	C16-C17-N22	2.13	118.99	115.76
4	A	903	4PX	C20-C19-N15	2.42	114.00	108.80
4	A	903	4PX	C4-C3-C2	2.46	119.39	116.98
5	B	803	4XU	N5-C3-N2	2.63	121.61	118.67
5	B	803	4XU	C8-C7-N5	3.27	119.61	111.12
4	A	903	4PX	C23-C19-N15	5.47	114.71	108.96

There are no chirality outliers.

There are no torsion outliers.

There are no ring outliers.

1 monomer is involved in 1 short contact:

Mol	Chain	Res	Type	Clashes	Symm-Clashes
4	A	903	4PX	1	0

5.7 Other polymers [i](#)

There are no such residues in this entry.

5.8 Polymer linkage issues ⓘ

There are no chain breaks in this entry.

6 Fit of model and data ⓘ

6.1 Protein, DNA and RNA chains ⓘ

In the following table, the column labelled ‘#RSRZ> 2’ contains the number (and percentage) of RSRZ outliers, followed by percent RSRZ outliers for the chain as percentile scores relative to all X-ray entries and entries of similar resolution. The OWAB column contains the minimum, median, 95th percentile and maximum values of the occupancy-weighted average B-factor per residue. The column labelled ‘Q< 0.9’ lists the number of (and percentage) of residues with an average occupancy less than 0.9.

Mol	Chain	Analysed	<RSRZ>	#RSRZ>2		OWAB(Å ²)	Q<0.9
1	A	308/362 (85%)	0.57	23 (7%)	17 23	24, 45, 71, 92	0
1	B	322/362 (88%)	0.44	22 (6%)	20 28	26, 44, 72, 92	0
All	All	630/724 (87%)	0.50	45 (7%)	19 26	24, 45, 72, 92	0

All (45) RSRZ outliers are listed below:

Mol	Chain	Res	Type	RSRZ
1	A	452	PHE	5.4
1	B	446	TRP	4.4
1	B	440	ILE	4.2
1	B	537	LEU	4.1
1	B	644	LEU	3.9
1	B	452	PHE	3.9
1	B	577	SER	3.6
1	B	450	MET	3.6
1	A	523	VAL	3.5
1	B	639	TYR	3.4
1	B	575	LEU	3.2
1	A	453	THR	3.2
1	A	575	LEU	3.0
1	B	449	LEU	3.0
1	A	521	VAL	3.0
1	B	443	SER	2.9
1	A	644	LEU	2.8
1	A	547	LEU	2.7
1	A	639	TYR	2.6
1	A	641	THR	2.6
1	A	524	ALA	2.6
1	B	442	THR	2.6
1	A	576	TYR	2.6
1	B	640	GLN	2.6

Continued on next page...

Continued from previous page...

Mol	Chain	Res	Type	RSRZ
1	A	550	CYS	2.6
1	B	456	VAL	2.5
1	B	451	GLN	2.5
1	B	472	PHE	2.5
1	B	551	LEU	2.4
1	B	574	ALA	2.4
1	A	495	LEU	2.4
1	A	526	CYS	2.3
1	A	525	HIS	2.3
1	A	462	ILE	2.3
1	A	642	GLY	2.3
1	B	635	LEU	2.3
1	A	529	ALA	2.3
1	A	454	LEU	2.2
1	A	666	CYS	2.1
1	B	552	CYS	2.1
1	A	469	ILE	2.1
1	A	695	LYS	2.1
1	A	756	ILE	2.1
1	B	459	CYS	2.1
1	B	596	GLU	2.0

6.2 Non-standard residues in protein, DNA, RNA chains [i](#)

There are no non-standard protein/DNA/RNA residues in this entry.

6.3 Carbohydrates [i](#)

There are no carbohydrates in this entry.

6.4 Ligands [i](#)

In the following table, the Atoms column lists the number of modelled atoms in the group and the number defined in the chemical component dictionary. LLDF column lists the quality of electron density of the group with respect to its neighbouring residues in protein, DNA or RNA chains. The B-factors column lists the minimum, median, 95th percentile and maximum values of B factors of atoms in the group. The column labelled 'Q< 0.9' lists the number of atoms with occupancy less than 0.9.

Mol	Type	Chain	Res	Atoms	RSCC	RSR	LLDF	B-factors(Å ²)	Q<0.9
3	MG	B	802	1/1	0.96	0.17	1.51	40,40,40,40	0

Continued on next page...

Continued from previous page...

Mol	Type	Chain	Res	Atoms	RSCC	RSR	LLDF	B-factors(\AA^2)	Q<0.9
4	4PX	A	903	26/26	0.95	0.14	-0.17	26,31,35,37	0
5	4XU	B	803	31/31	0.96	0.11	-0.31	25,34,39,43	0
3	MG	A	902	1/1	0.96	0.12	-0.92	27,27,27,27	0
2	ZN	A	901	1/1	0.99	0.10	-1.54	44,44,44,44	0
2	ZN	B	801	1/1	0.99	0.04	-7.73	52,52,52,52	0

6.5 Other polymers [i](#)

There are no such residues in this entry.