



# Full wwPDB X-ray Structure Validation Report ⓘ

Feb 19, 2016 – 11:10 PM GMT

PDB ID : 5CCB  
Title : Crystal structure of human m1A58 methyltransferase in a complex with tRNA3Lys and SAH  
Authors : Finer-Moore, J.; Czudnochowski, N.; O'Connell III, J.D.; Wang, A.L.; Stroud, R.M.  
Deposited on : 2015-07-01  
Resolution : 2.00 Å(reported)

This is a Full wwPDB X-ray Structure Validation Report for a publicly released PDB entry.  
We welcome your comments at [validation@mail.wwpdb.org](mailto:validation@mail.wwpdb.org)  
A user guide is available at  
<http://wwpdb.org/validation/2016/XrayValidationReportHelp>  
with specific help available everywhere you see the ⓘ symbol.

---

The following versions of software and data (see [references ⓘ](#)) were used in the production of this report:

MolProbity	:	4.02b-467
Mogul	:	unknown
Xtriage (Phenix)	:	1.9-1692
EDS	:	rb-20026982
Percentile statistics	:	20151230.v01 (using entries in the PDB archive December 30th 2015)
Refmac	:	5.8.0135
CCP4	:	6.5.0
Ideal geometry (proteins)	:	Engh & Huber (2001)
Ideal geometry (DNA, RNA)	:	Parkinson et al. (1996)
Validation Pipeline (wwPDB-VP)	:	rb-20026982

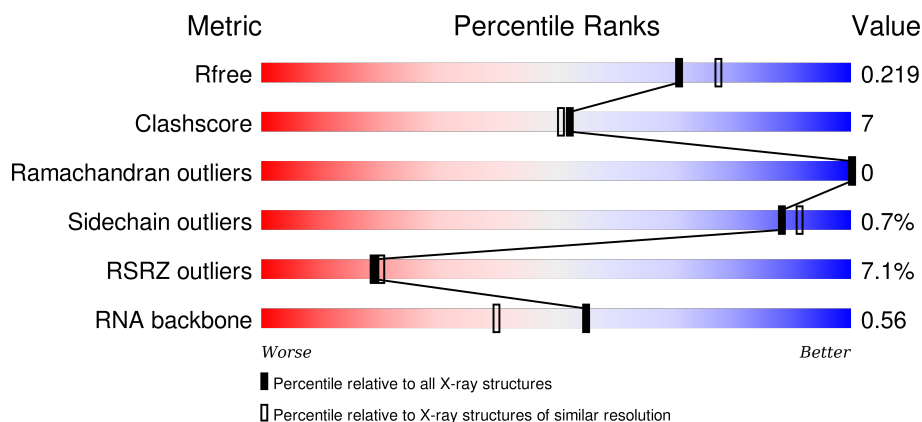
# 1 Overall quality at a glance

The following experimental techniques were used to determine the structure:

## *X-RAY DIFFRACTION*

The reported resolution of this entry is 2.00 Å.

Percentile scores (ranging between 0-100) for global validation metrics of the entry are shown in the following graphic. The table shows the number of entries on which the scores are based.



Metric	Whole archive (#Entries)	Similar resolution (#Entries, resolution range(Å))
$R_{free}$	91344	6249 (2.00-2.00)
Clashscore	102246	7340 (2.00-2.00)
Ramachandran outliers	100387	7248 (2.00-2.00)
Sidechain outliers	100360	7247 (2.00-2.00)
RSRZ outliers	91569	6262 (2.00-2.00)
RNA backbone	2183	1002 (2.72-1.30)

The table below summarises the geometric issues observed across the polymeric chains and their fit to the electron density. The red, orange, yellow and green segments on the lower bar indicate the fraction of residues that contain outliers for  $\geq 3$ , 2, 1 and 0 types of geometric quality criteria. A grey segment represents the fraction of residues that are not modelled. The numeric value for each fraction is indicated below the corresponding segment, with a dot representing fractions  $\leq 5\%$ . The upper red bar (where present) indicates the fraction of residues that have poor fit to the electron density. The numeric value is given above the bar.

Mol	Chain	Length	Quality of chain
1	A	289	<div> <div>91%</div> <div>7%</div> <div>•</div> </div>
2	B	497	<div> <div>9%</div> <div>64%</div> <div>10%</div> <div>25%</div> </div>
3	N	77	<div> <div>3%</div> <div>57%</div> <div>34%</div> <div>9%</div> </div>

## 2 Entry composition

There are 6 unique types of molecules in this entry. The entry contains 13154 atoms, of which 5959 are hydrogens and 0 are deuteriums.

In the tables below, the ZeroOcc column contains the number of atoms modelled with zero occupancy, the AltConf column contains the number of residues with at least one atom in alternate conformation and the Trace column contains the number of residues modelled with at most 2 atoms.

- Molecule 1 is a protein called tRNA (adenine(58)-N(1))-methyltransferase catalytic subunit TRMT61A.

Mol	Chain	Residues	Atoms						ZeroOcc	AltConf	Trace
1	A	282	Total	C	H	N	O	S	0	0	0
			4305	1362	2144	390	398	11			

- Molecule 2 is a protein called tRNA (adenine(58)-N(1))-methyltransferase non-catalytic subunit TRM6.

Mol	Chain	Residues	Atoms						ZeroOcc	AltConf	Trace
2	B	371	Total	C	H	N	O	S	0	0	0
			5882	1864	2955	517	532	14			

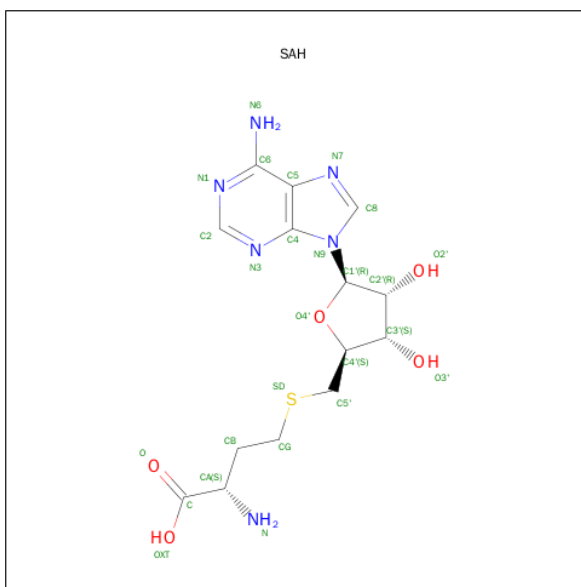
- Molecule 3 is a RNA chain called tRNA3Lys.

Mol	Chain	Residues	Atoms						ZeroOcc	AltConf	Trace
3	N	77	Total	C	H	N	O	P	0	1	0
			2505	742	841	296	548	78			

There are 3 discrepancies between the modelled and reference sequences:

Chain	Residue	Modelled	Actual	Comment	Reference
N	74	C	-	INSERTION	GB 339572
N	75	C	-	INSERTION	GB 339572
N	76	A	-	INSERTION	GB 339572

- Molecule 4 is S-ADENOSYL-L-HOMOCYSTEINE (three-letter code: SAH) (formula: C<sub>14</sub>H<sub>20</sub>N<sub>6</sub>O<sub>5</sub>S).



Mol	Chain	Residues	Atoms					ZeroOcc	AltConf
4	A	1	Total	C	H	N	O	S	
			45	14	19	6	5	1	

- Molecule 5 is SODIUM ION (three-letter code: NA) (formula: Na).

Mol	Chain	Residues	Atoms		ZeroOcc	AltConf
5	N	1	Total	Na		
			1	1	0	0

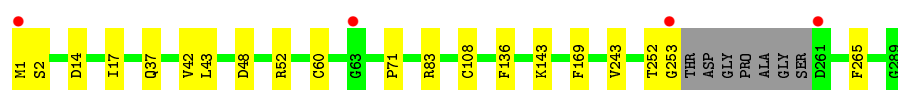
- Molecule 6 is water.

Mol	Chain	Residues	Atoms		ZeroOcc	AltConf
6	A	164	Total	O		
			164	164	0	0
6	B	144	Total	O		
			144	144	0	0
6	N	108	Total	O		
			108	108	0	0

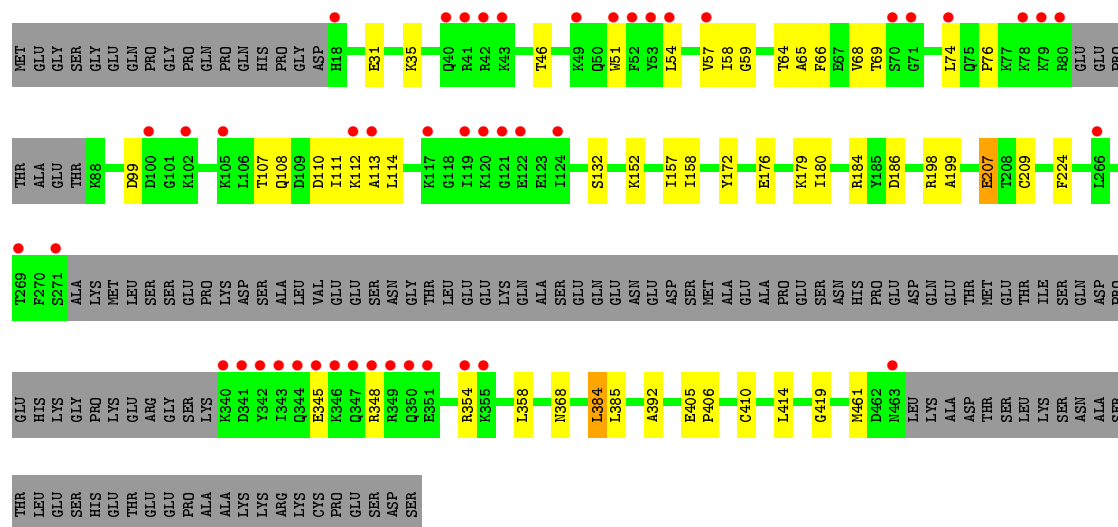
### 3 Residue-property plots [i](#)

These plots are drawn for all protein, RNA and DNA chains in the entry. The first graphic for a chain summarises the proportions of errors displayed in the second graphic. The second graphic shows the sequence view annotated by issues in geometry and electron density. Residues are color-coded according to the number of geometric quality criteria for which they contain at least one outlier: green = 0, yellow = 1, orange = 2 and red = 3 or more. A red dot above a residue indicates a poor fit to the electron density ( $RSRZ > 2$ ). Stretches of 2 or more consecutive residues without any outlier are shown as a green connector. Residues present in the sample, but not in the model, are shown in grey.

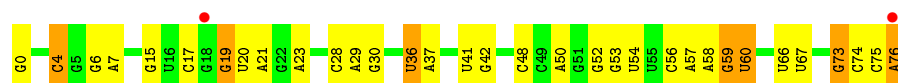
- Molecule 1: tRNA (adenine(58)-N(1))-methyltransferase catalytic subunit TRMT61A



- Molecule 2: tRNA (adenine(58)-N(1))-methyltransferase non-catalytic subunit TRM6



- Molecule 3: tRNA<sup>3</sup>Lys



## 4 Data and refinement statistics

Property	Value	Source
Space group	P 43 21 2	Depositor
Cell constants a, b, c, $\alpha$ , $\beta$ , $\gamma$	137.18Å 137.18Å 177.02Å 90.00° 90.00° 90.00°	Depositor
Resolution (Å)	74.37 – 2.00 74.37 – 1.85	Depositor EDS
% Data completeness (in resolution range)	99.9 (74.37-2.00) 84.6 (74.37-1.85)	Depositor EDS
$R_{merge}$	0.08	Depositor
$R_{sym}$	(Not available)	Depositor
$\langle I/\sigma(I) \rangle$ <sup>1</sup>	1.19 (at 1.84Å)	Xtriage
Refinement program	PHENIX (phenix.refine: 1.8.1_1168)	Depositor
R, $R_{free}$	0.199 , 0.222 0.197 , 0.219	Depositor DCC
$R_{free}$ test set	5184 reflections (5.01%)	DCC
Wilson B-factor (Å <sup>2</sup> )	31.8	Xtriage
Anisotropy	0.180	Xtriage
Bulk solvent $k_{sol}$ (e/Å <sup>3</sup> ), $B_{sol}$ (Å <sup>2</sup> )	0.36 , 50.2	EDS
Estimated twinning fraction	No twinning to report.	Xtriage
L-test for twinning <sup>2</sup>	$\langle  L  \rangle = 0.49$ , $\langle L^2 \rangle = 0.33$	Xtriage
Outliers	0 of 143545 reflections	Xtriage
$F_o, F_c$ correlation	0.96	EDS
Total number of atoms	13154	wwPDB-VP
Average B, all atoms (Å <sup>2</sup> )	63.0	wwPDB-VP

Xtriage's analysis on translational NCS is as follows: *The largest off-origin peak in the Patterson function is 2.92% of the height of the origin peak. No significant pseudotranslation is detected.*

<sup>1</sup>Intensities estimated from amplitudes.

<sup>2</sup>Theoretical values of  $\langle |L| \rangle$ ,  $\langle L^2 \rangle$  for acentric reflections are 0.5, 0.375 respectively for untwinned datasets, and 0.333, 0.2 for perfectly twinned datasets.

## 5 Model quality

### 5.1 Standard geometry

Bond lengths and bond angles in the following residue types are not validated in this section: NA, SAH

The Z score for a bond length (or angle) is the number of standard deviations the observed value is removed from the expected value. A bond length (or angle) with  $|Z| > 5$  is considered an outlier worth inspection. RMSZ is the root-mean-square of all Z scores of the bond lengths (or angles).

Mol	Chain	Bond lengths		Bond angles	
		RMSZ	$\# Z  > 5$	RMSZ	$\# Z  > 5$
1	A	0.31	0/2214	0.51	0/3012
2	B	0.29	0/2981	0.47	0/4009
3	N	0.38	0/1859	0.88	0/2896
All	All	0.32	0/7054	0.63	0/9917

There are no bond length outliers.

There are no bond angle outliers.

There are no chirality outliers.

There are no planarity outliers.

### 5.2 Too-close contacts

In the following table, the Non-H and H(model) columns list the number of non-hydrogen atoms and hydrogen atoms in the chain respectively. The H(added) column lists the number of hydrogen atoms added and optimized by MolProbity. The Clashes column lists the number of clashes within the asymmetric unit, whereas Symm-Clashes lists symmetry related clashes.

Mol	Chain	Non-H	H(model)	H(added)	Clashes	Symm-Clashes
1	A	2161	2144	2131	15	0
2	B	2927	2955	2949	39	0
3	N	1664	841	841	32	0
4	A	26	19	19	0	0
5	N	1	0	0	0	0
6	A	164	0	0	0	1
6	B	144	0	0	2	0
6	N	108	0	0	5	0
All	All	7195	5959	5940	85	1

The all-atom clashscore is defined as the number of clashes found per 1000 atoms (including

hydrogen atoms). The all-atom clashscore for this structure is 7.

All (85) close contacts within the same asymmetric unit are listed below, sorted by their clash magnitude.

Atom-1	Atom-2	Interatomic distance (Å)	Clash overlap (Å)
1:A:1:MET:HB3	1:A:2:SER:HA	1.53	0.88
3:N:7:A:O2'	6:N:201:HOH:O	2.09	0.70
2:B:384:LEU:HD12	2:B:410:CYS:SG	2.37	0.65
3:N:17:C:OP2	3:N:19:G:N2	2.30	0.64
2:B:99:ASP:OD1	3:N:53:G:O2'	2.15	0.62
3:N:21:A:N3	3:N:21:A:O4'	2.33	0.61
1:A:43:LEU:HD11	1:A:60:CYS:SG	2.40	0.60
2:B:57:VAL:HG23	2:B:66:PHE:CZ	2.36	0.59
3:N:19:G:H2'	3:N:19:G:N3	2.16	0.59
3:N:76:A:H3'	3:N:76:A:N3	2.18	0.59
2:B:354:ARG:O	2:B:358:LEU:HD13	2.04	0.58
2:B:35:LYS:NZ	2:B:46:THR:O	2.32	0.58
3:N:17:C:C5	3:N:19:G:C6	2.94	0.56
2:B:176:GLU:HB3	2:B:179:LYS:HG3	1.86	0.56
1:A:1:MET:CB	1:A:2:SER:HA	2.25	0.54
2:B:46:THR:HG23	2:B:51:TRP:CZ3	2.43	0.54
2:B:132:SER:O	6:B:501:HOH:O	2.18	0.54
1:A:108:CYS:HB3	1:A:169:PHE:CD1	2.44	0.53
3:N:56:C:C5	3:N:58[A]:A:N1	2.78	0.52
1:A:243:VAL:HG23	1:A:265:PHE:CZ	2.44	0.52
2:B:65:ALA:O	2:B:66:PHE:CD2	2.63	0.52
3:N:48:C:N3	6:N:203:HOH:O	2.34	0.52
3:N:36:U:O2	3:N:36:U:H2'	2.09	0.52
3:N:36:U:C2'	3:N:36:U:O2	2.59	0.51
2:B:157:ILE:C	2:B:158:ILE:HD12	2.31	0.51
2:B:46:THR:HG23	2:B:51:TRP:CH2	2.46	0.51
3:N:4:C:H5''	3:N:4:C:H6	1.75	0.51
1:A:37:GLN:OE1	1:A:42:VAL:HG22	2.11	0.51
3:N:20:U:O2	3:N:20:U:O4'	2.30	0.49
3:N:59:G:C1'	3:N:60:U:OP1	2.61	0.49
3:N:0:G:C5	3:N:74:C:C6	3.00	0.49
3:N:17:C:H3'	3:N:17:C:OP1	2.12	0.49
3:N:28:C:O2'	3:N:29:A:H5'	2.12	0.49
3:N:0:G:O6	3:N:75:C:N4	2.46	0.48
3:N:75:C:H3'	3:N:75:C:O2	2.13	0.48
2:B:385:LEU:O	6:B:502:HOH:O	2.20	0.48
2:B:66:PHE:HA	2:B:76:PRO:HD3	1.95	0.48
3:N:59:G:H1'	3:N:60:U:OP1	2.14	0.48

*Continued on next page...*



*Continued from previous page...*

Atom-1	Atom-2	Interatomic distance (Å)	Clash overlap (Å)
2:B:345:GLU:OE2	2:B:348:ARG:NH2	2.46	0.48
2:B:64:THR:HG22	2:B:66:PHE:CE2	2.49	0.47
2:B:74:LEU:O	2:B:76:PRO:HD3	2.15	0.47
3:N:41:U:H2'	3:N:42:G:O4'	2.15	0.46
2:B:57:VAL:O	2:B:57:VAL:HG13	2.15	0.46
1:A:243:VAL:CG2	1:A:265:PHE:CE2	2.99	0.46
2:B:54:LEU:O	2:B:57:VAL:HG12	2.16	0.46
2:B:31:GLU:HG2	2:B:152:LYS:HE2	1.98	0.46
1:A:83:ARG:CD	1:A:143:LYS:HG2	2.46	0.45
1:A:1:MET:HB2	1:A:14:ASP:OD1	2.16	0.45
2:B:107:THR:HG22	2:B:108:GLN:N	2.32	0.45
3:N:66:U:C4	3:N:67:U:C4	3.04	0.45
1:A:83:ARG:HD3	1:A:143:LYS:HG2	1.98	0.45
2:B:68:VAL:HG12	2:B:69:THR:N	2.32	0.45
3:N:73:G:O2'	3:N:75:C:C5	2.71	0.44
2:B:158:ILE:N	2:B:158:ILE:HD12	2.31	0.44
2:B:58:ILE:HG22	2:B:59:GLY:N	2.32	0.44
1:A:1:MET:HB3	1:A:2:SER:CA	2.36	0.44
3:N:7:A:H5'	6:N:232:HOH:O	2.18	0.44
3:N:75:C:O2	3:N:75:C:C2'	2.65	0.44
2:B:111:ILE:CG2	2:B:112:LYS:N	2.80	0.44
2:B:419:GLY:HA3	2:B:461:MET:SD	2.58	0.44
1:A:48:ASP:O	1:A:52:ARG:HD3	2.18	0.43
2:B:207:GLU:HG3	2:B:209:CYS:H	1.83	0.43
2:B:384:LEU:CD1	2:B:414:LEU:HD11	2.48	0.43
2:B:110:ASP:O	2:B:113:ALA:HB3	2.19	0.43
1:A:252:THR:HG22	1:A:253:GLY:N	2.32	0.42
2:B:114:LEU:N	2:B:114:LEU:HD22	2.34	0.42
2:B:184:ARG:HD2	2:B:186:ASP:OD1	2.20	0.42
2:B:108:GLN:O	2:B:111:ILE:HG22	2.19	0.42
1:A:17:ILE:HD13	1:A:71:PRO:HA	2.02	0.42
3:N:36:U:OP1	6:N:202:HOH:O	2.22	0.42
2:B:199:ALA:HB1	2:B:224:PHE:HB2	2.02	0.42
3:N:59:G:O2'	3:N:60:U:H5''	2.19	0.41
3:N:17:C:C4	3:N:19:G:O6	2.74	0.41
2:B:110:ASP:O	2:B:114:LEU:HD23	2.20	0.41
2:B:172:TYR:HB3	2:B:180:ILE:HD13	2.03	0.41
3:N:52:G:O2'	3:N:53:G:H5'	2.21	0.41
3:N:59:G:H1'	3:N:60:U:P	2.60	0.41
3:N:0:G:N7	3:N:74:C:C5	2.89	0.41
2:B:405:GLU:N	2:B:406:PRO:CD	2.83	0.41

*Continued on next page...*

Continued from previous page...

Atom-1	Atom-2	Interatomic distance (Å)	Clash overlap (Å)
2:B:405:GLU:HB2	2:B:406:PRO:HD3	2.03	0.41
2:B:368:ASN:HA	2:B:392:ALA:HB2	2.03	0.41
2:B:384:LEU:HA	2:B:384:LEU:HD23	1.93	0.40
3:N:58[A]:A:H3'	6:N:229:HOH:O	2.20	0.40
1:A:1:MET:HE2	1:A:14:ASP:HA	2.02	0.40
2:B:57:VAL:HG23	2:B:66:PHE:CE2	2.57	0.40

All (1) symmetry-related close contacts are listed below. The label for Atom-2 includes the symmetry operator and encoded unit-cell translations to be applied.

Atom-1	Atom-2	Interatomic distance (Å)	Clash overlap (Å)
6:A:409:HOH:O	6:A:409:HOH:O[7_555]	2.00	0.20

## 5.3 Torsion angles [i](#)

### 5.3.1 Protein backbone [i](#)

In the following table, the Percentiles column shows the percent Ramachandran outliers of the chain as a percentile score with respect to all X-ray entries followed by that with respect to entries of similar resolution.

The Analysed column shows the number of residues for which the backbone conformation was analysed, and the total number of residues.

Mol	Chain	Analysed	Favoured	Allowed	Outliers	Percentiles	
1	A	278/289 (96%)	272 (98%)	6 (2%)	0	100	100
2	B	365/497 (73%)	352 (96%)	13 (4%)	0	100	100
All	All	643/786 (82%)	624 (97%)	19 (3%)	0	100	100

There are no Ramachandran outliers to report.

### 5.3.2 Protein sidechains [i](#)

In the following table, the Percentiles column shows the percent sidechain outliers of the chain as a percentile score with respect to all X-ray entries followed by that with respect to entries of similar resolution.

The Analysed column shows the number of residues for which the sidechain conformation was analysed, and the total number of residues.

Mol	Chain	Analysed	Rotameric	Outliers	Percentiles	
1	A	233/238 (98%)	232 (100%)	1 (0%)	93	95
2	B	309/428 (72%)	306 (99%)	3 (1%)	82	85
All	All	542/666 (81%)	538 (99%)	4 (1%)	88	91

All (4) residues with a non-rotameric sidechain are listed below:

Mol	Chain	Res	Type
1	A	136	PHE
2	B	198	ARG
2	B	207	GLU
2	B	384	LEU

Some sidechains can be flipped to improve hydrogen bonding and reduce clashes. There are no such sidechains identified.

### 5.3.3 RNA ⓘ

Mol	Chain	Analysed	Backbone Outliers	Pucker Outliers
3	N	75/77 (97%)	14 (18%)	1 (1%)

All (14) RNA backbone outliers are listed below:

Mol	Chain	Res	Type
3	N	4	C
3	N	6	G
3	N	15	G
3	N	19	G
3	N	23	A
3	N	30	G
3	N	36	U
3	N	37	A
3	N	50	A
3	N	54	U
3	N	57	A
3	N	60	U
3	N	73	G
3	N	76	A

All (1) RNA pucker outliers are listed below:

Mol	Chain	Res	Type
3	N	59	G

## 5.4 Non-standard residues in protein, DNA, RNA chains [i](#)

There are no non-standard protein/DNA/RNA residues in this entry.

## 5.5 Carbohydrates [i](#)

There are no carbohydrates in this entry.

## 5.6 Ligand geometry [i](#)

Of 2 ligands modelled in this entry, 1 is monoatomic - leaving 1 for Mogul analysis.

In the following table, the Counts columns list the number of bonds (or angles) for which Mogul statistics could be retrieved, the number of bonds (or angles) that are observed in the model and the number of bonds (or angles) that are defined in the chemical component dictionary. The Link column lists molecule types, if any, to which the group is linked. The Z score for a bond length (or angle) is the number of standard deviations the observed value is removed from the expected value. A bond length (or angle) with  $|Z| > 2$  is considered an outlier worth inspection. RMSZ is the root-mean-square of all Z scores of the bond lengths (or angles).

Mol	Type	Chain	Res	Link	Bond lengths			Bond angles		
					Counts	RMSZ	# $ Z  > 2$	Counts	RMSZ	# $ Z  > 2$
4	SAH	A	301	-	22,28,28	1.02	2 (9%)	18,40,40	2.80	3 (16%)

In the following table, the Chirals column lists the number of chiral outliers, the number of chiral centers analysed, the number of these observed in the model and the number defined in the chemical component dictionary. Similar counts are reported in the Torsion and Rings columns. '-' means no outliers of that kind were identified.

Mol	Type	Chain	Res	Link	Chirals	Torsions	Rings
4	SAH	A	301	-	-	0/7/31/31	0/3/3/3

All (2) bond length outliers are listed below:

Mol	Chain	Res	Type	Atoms	Z	Observed(Å)	Ideal(Å)
4	A	301	SAH	C2-N1	2.24	1.38	1.33
4	A	301	SAH	C2-N3	3.20	1.37	1.32

All (3) bond angle outliers are listed below:

Mol	Chain	Res	Type	Atoms	Z	Observed( $^{\circ}$ )	Ideal( $^{\circ}$ )
4	A	301	SAH	N3-C2-N1	-11.04	120.20	128.87
4	A	301	SAH	C1'-N9-C4	-2.92	123.54	126.81
4	A	301	SAH	C5'-SD-CG	-2.06	96.16	102.42

There are no chirality outliers.

There are no torsion outliers.

There are no ring outliers.

No monomer is involved in short contacts.

## 5.7 Other polymers [i](#)

There are no such residues in this entry.

## 5.8 Polymer linkage issues [i](#)

There are no chain breaks in this entry.

## 6 Fit of model and data ⓘ

### 6.1 Protein, DNA and RNA chains ⓘ

In the following table, the column labelled ‘#RSRZ> 2’ contains the number (and percentage) of RSRZ outliers, followed by percent RSRZ outliers for the chain as percentile scores relative to all X-ray entries and entries of similar resolution. The OWAB column contains the minimum, median, 95<sup>th</sup> percentile and maximum values of the occupancy-weighted average B-factor per residue. The column labelled ‘Q< 0.9’ lists the number of (and percentage) of residues with an average occupancy less than 0.9.

Mol	Chain	Analysed	<RSRZ>	#RSRZ>2	OWAB(Å <sup>2</sup> )	Q<0.9
1	A	282/289 (97%)	-0.09	4 (1%) 78 78	30, 41, 73, 108	0
2	B	371/497 (74%)	0.44	46 (12%) 5 6	33, 56, 110, 145	0
3	N	77/77 (100%)	-0.64	2 (2%) 59 60	38, 55, 124, 150	0
All	All	730/863 (84%)	0.12	52 (7%) 19 20	30, 51, 108, 150	0

All (52) RSRZ outliers are listed below:

Mol	Chain	Res	Type	RSRZ
1	A	1	MET	8.0
2	B	343	ILE	6.7
2	B	342	TYR	6.6
2	B	341	ASP	6.5
1	A	253	GLY	6.2
2	B	346	LYS	4.7
2	B	42	ARG	4.6
2	B	51	TRP	4.5
2	B	344	GLN	4.5
2	B	340	LYS	4.3
2	B	74	LEU	4.3
2	B	78	LYS	4.1
2	B	52	PHE	4.0
2	B	53	TYR	3.9
2	B	119	ILE	3.9
2	B	57	VAL	3.8
2	B	43	LYS	3.7
2	B	120	LYS	3.6
2	B	70	SER	3.6
2	B	348	ARG	3.5
2	B	71	GLY	3.5
2	B	349	ARG	3.4
2	B	271	SER	3.3

*Continued on next page...*

*Continued from previous page...*

Mol	Chain	Res	Type	RSRZ
2	B	463	ASN	3.3
2	B	54	LEU	3.3
1	A	261	ASP	3.2
2	B	117	LYS	3.2
2	B	347	GLN	3.2
2	B	113	ALA	2.9
2	B	351	GLU	2.9
3	N	76	A	2.8
2	B	18	HIS	2.8
2	B	80	ARG	2.8
2	B	112	LYS	2.7
2	B	350	GLN	2.6
2	B	79	LYS	2.6
2	B	40	GLN	2.5
2	B	124	ILE	2.5
2	B	102	LYS	2.4
2	B	266	LEU	2.4
1	A	63	GLY	2.4
2	B	345	GLU	2.4
2	B	105	LYS	2.4
2	B	122	GLU	2.3
2	B	269	THR	2.2
2	B	354	ARG	2.2
2	B	121	GLY	2.2
2	B	355	LYS	2.2
2	B	41	ARG	2.1
2	B	49	LYS	2.0
2	B	100	ASP	2.0
3	N	18	G	2.0

## 6.2 Non-standard residues in protein, DNA, RNA chains ⓘ

There are no non-standard protein/DNA/RNA residues in this entry.

## 6.3 Carbohydrates ⓘ

There are no carbohydrates in this entry.

## 6.4 Ligands [i](#)

In the following table, the Atoms column lists the number of modelled atoms in the group and the number defined in the chemical component dictionary. LLDF column lists the quality of electron density of the group with respect to its neighbouring residues in protein, DNA or RNA chains. The B-factors column lists the minimum, median, 95<sup>th</sup> percentile and maximum values of B factors of atoms in the group. The column labelled 'Q< 0.9' lists the number of atoms with occupancy less than 0.9.

Mol	Type	Chain	Res	Atoms	RSCC	RSR	LLDF	B-factors( $\text{\AA}^2$ )	Q<0.9
4	SAH	A	301	26/26	0.98	0.11	-0.21	29,36,43,47	0
5	NA	N	101	1/1	0.96	0.11	-	42,42,42,42	0

## 6.5 Other polymers [i](#)

There are no such residues in this entry.