



# Full wwPDB X-ray Structure Validation Report ⓘ

Feb 1, 2016 – 07:53 AM GMT

PDB ID : 3CIB  
Title : Structure of BACE Bound to SCH727596  
Authors : Strickland, C.; Cumming, J.  
Deposited on : 2008-03-11  
Resolution : 1.72 Å(reported)

This is a Full wwPDB X-ray Structure Validation Report for a publicly released PDB entry.  
We welcome your comments at [validation@mail.wwpdb.org](mailto:validation@mail.wwpdb.org)  
A user guide is available at  
<http://wwpdb.org/validation/2016/XrayValidationReportHelp>  
with specific help available everywhere you see the ⓘ symbol.

---

The following versions of software and data (see [references ⓘ](#)) were used in the production of this report:

MolProbity : 4.02b-467  
Mogul : 1.7 (RC4), CSD as536be (2015)  
Xtriage (Phenix) : 1.9-1692  
EDS : rb-20026688  
Percentile statistics : 20151230.v01 (using entries in the PDB archive December 30th 2015)  
Refmac : 5.8.0135  
CCP4 : 6.5.0  
Ideal geometry (proteins) : Engh & Huber (2001)  
Ideal geometry (DNA, RNA) : Parkinson et al. (1996)  
Validation Pipeline (wwPDB-VP) : trunk26865

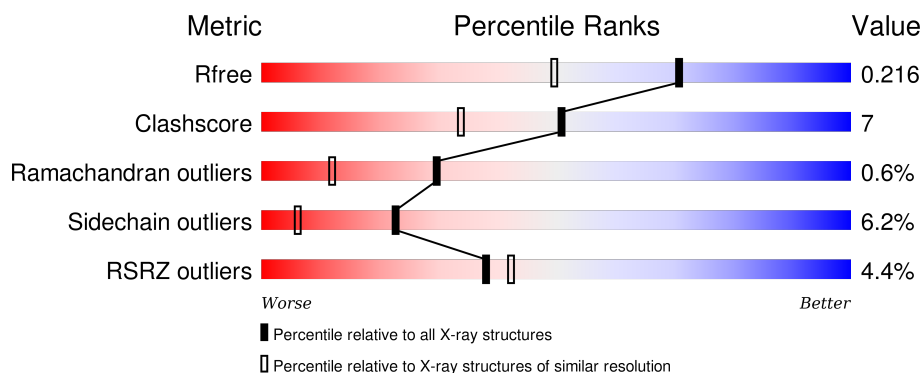
# 1 Overall quality at a glance

The following experimental techniques were used to determine the structure:

## *X-RAY DIFFRACTION*

The reported resolution of this entry is 1.72 Å.

Percentile scores (ranging between 0-100) for global validation metrics of the entry are shown in the following graphic. The table shows the number of entries on which the scores are based.



Metric	Whole archive (#Entries)	Similar resolution (#Entries, resolution range(Å))
$R_{free}$	91344	3998 (1.74-1.70)
Clashscore	102246	4425 (1.74-1.70)
Ramachandran outliers	100387	4360 (1.74-1.70)
Sidechain outliers	100360	4360 (1.74-1.70)
RSRZ outliers	91569	4010 (1.74-1.70)

The table below summarises the geometric issues observed across the polymeric chains and their fit to the electron density. The red, orange, yellow and green segments on the lower bar indicate the fraction of residues that contain outliers for  $\geq 3$ , 2, 1 and 0 types of geometric quality criteria. A grey segment represents the fraction of residues that are not modelled. The numeric value for each fraction is indicated below the corresponding segment, with a dot representing fractions  $\leq 5\%$ . The upper red bar (where present) indicates the fraction of residues that have poor fit to the electron density. The numeric value is given above the bar.

Mol	Chain	Length	Quality of chain
1	A	390	<div> <div>5%</div> <div>85%</div> <div>13%</div> </div>
1	B	390	<div> <div>4%</div> <div>81%</div> <div>16%</div> </div>

The following table lists non-polymeric compounds, carbohydrate monomers and non-standard residues in protein, DNA, RNA chains that are outliers for geometric or electron-density-fit criteria:

Mol	Type	Chain	Res	Chirality	Geometry	Clashes	Electron density
3	TAR	A	502	X	-	-	X
3	TAR	B	503	X	-	-	X

## 2 Entry composition [i](#)

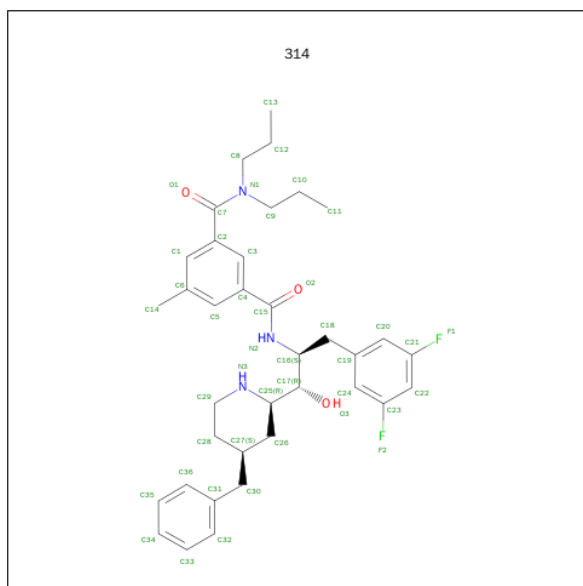
There are 4 unique types of molecules in this entry. The entry contains 7186 atoms, of which 0 are hydrogens and 0 are deuteriums.

In the tables below, the ZeroOcc column contains the number of atoms modelled with zero occupancy, the AltConf column contains the number of residues with at least one atom in alternate conformation and the Trace column contains the number of residues modelled with at most 2 atoms.

- Molecule 1 is a protein called Beta-secretase 1.

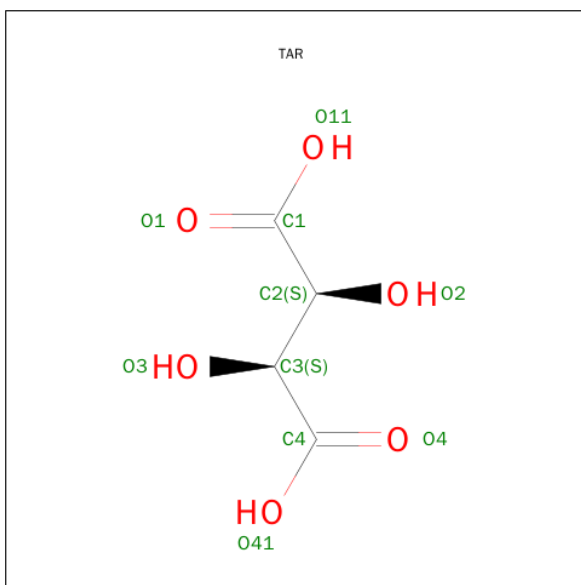
Mol	Chain	Residues	Atoms					ZeroOcc	AltConf	Trace
1	A	390	Total	C	N	O	S	0	0	0
			3060	1959	508	579	14			
1	B	389	Total	C	N	O	S	0	0	0
			3052	1953	507	578	14			

- Molecule 2 is N'-[(1S,2R)-2-[(2R,4S)-4-BENZYLPIPERIDIN-2-YL]-1-(3,5-DIFLUOROBENZYL)-2-HYDROXYETHYL]-5-METHYL-N,N-DIPROPYLBENZENE-1,3-DICARBOXAMIDE (three-letter code: 314) (formula: C<sub>36</sub>H<sub>45</sub>F<sub>2</sub>N<sub>3</sub>O<sub>3</sub>).



Mol	Chain	Residues	Atoms					ZeroOcc	AltConf
2	A	1	Total	C	F	N	O	0	0
			44	36	2	3	3		
2	B	1	Total	C	F	N	O	0	0
			44	36	2	3	3		

- Molecule 3 is D(-)-TARTARIC ACID (three-letter code: TAR) (formula: C<sub>4</sub>H<sub>6</sub>O<sub>6</sub>).



Mol	Chain	Residues	Atoms			ZeroOcc	AltConf
3	A	1	Total	C	O	0	0
			10	4	6		
3	B	1	Total	C	O	0	0
			10	4	6		

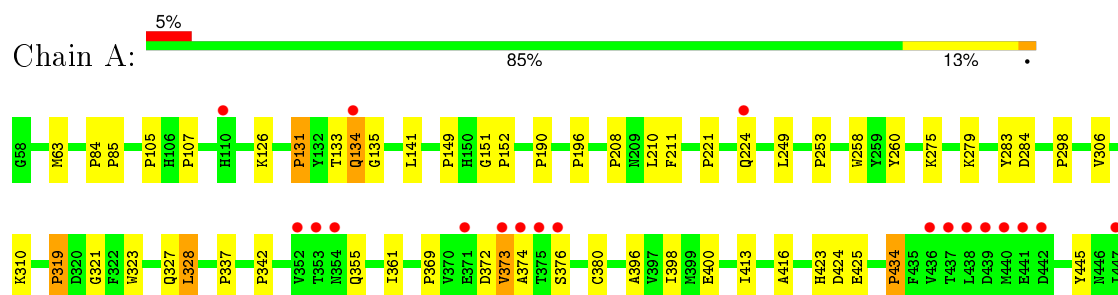
- Molecule 4 is water.

Mol	Chain	Residues	Atoms		ZeroOcc	AltConf
4	A	514	Total	O	0	0
			514	514		
4	B	452	Total	O	0	0
			452	452		

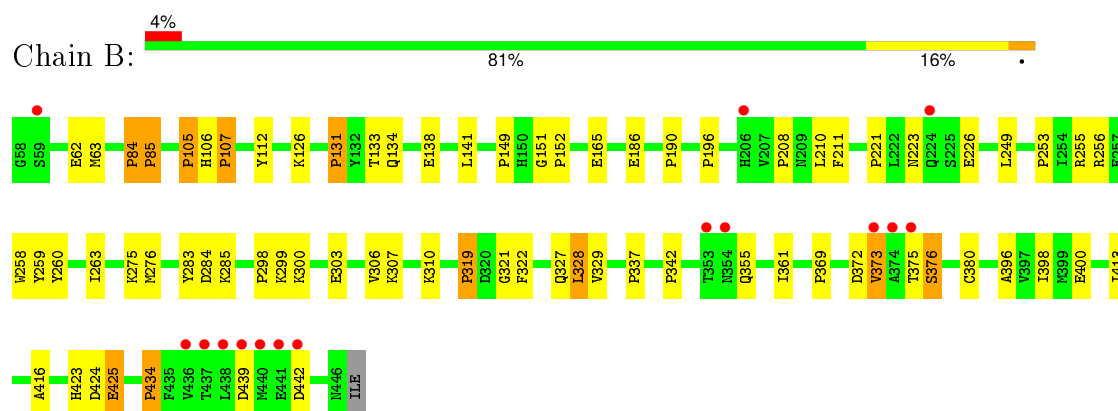
### 3 Residue-property plots

These plots are drawn for all protein, RNA and DNA chains in the entry. The first graphic for a chain summarises the proportions of errors displayed in the second graphic. The second graphic shows the sequence view annotated by issues in geometry and electron density. Residues are color-coded according to the number of geometric quality criteria for which they contain at least one outlier: green = 0, yellow = 1, orange = 2 and red = 3 or more. A red dot above a residue indicates a poor fit to the electron density ( $\text{RSRZ} > 2$ ). Stretches of 2 or more consecutive residues without any outlier are shown as a green connector. Residues present in the sample, but not in the model, are shown in grey.

#### • Molecule 1: Beta-secretase 1



#### • Molecule 1: Beta-secretase 1



## 4 Data and refinement statistics

Property	Value	Source
Space group	P 21 21 21	Depositor
Cell constants a, b, c, $\alpha$ , $\beta$ , $\gamma$	86.68Å 89.44Å 131.45Å 90.00° 90.00° 90.00°	Depositor
Resolution (Å)	50.00 – 1.72 44.72 – 1.72	Depositor EDS
% Data completeness (in resolution range)	92.9 (50.00-1.72) 92.7 (44.72-1.72)	Depositor EDS
$R_{merge}$	0.08	Depositor
$R_{sym}$	0.08	Depositor
$\langle I/\sigma(I) \rangle$ <sup>1</sup>	3.50 (at 1.72Å)	Xtriage
Refinement program	CNS	Depositor
R, $R_{free}$	0.188 , 0.216 0.186 , 0.216	Depositor DCC
$R_{free}$ test set	5059 reflections (5.26%)	DCC
Wilson B-factor (Å <sup>2</sup> )	13.4	Xtriage
Anisotropy	0.521	Xtriage
Bulk solvent $k_{sol}$ (e/Å <sup>3</sup> ), $B_{sol}$ (Å <sup>2</sup> )	0.37 , 55.6	EDS
Estimated twinning fraction	0.000 for k,h,-l	Xtriage
L-test for twinning <sup>2</sup>	$\langle  L  \rangle = 0.49$ , $\langle L^2 \rangle = 0.32$	Xtriage
Outliers	1 of 101315 reflections (0.001%)	Xtriage
$F_o, F_c$ correlation	0.96	EDS
Total number of atoms	7186	wwPDB-VP
Average B, all atoms (Å <sup>2</sup> )	17.0	wwPDB-VP

Xtriage's analysis on translational NCS is as follows: *The analyses of the Patterson function reveals a significant off-origin peak that is 47.55 % of the origin peak, indicating pseudo translational symmetry. The chance of finding a peak of this or larger height randomly in a structure without pseudo translational symmetry is equal to 9.7608e-05. The detected translational NCS is most likely also responsible for the elevated intensity ratio.*

<sup>1</sup>Intensities estimated from amplitudes.

<sup>2</sup>Theoretical values of  $\langle |L| \rangle$ ,  $\langle L^2 \rangle$  for acentric reflections are 0.5, 0.375 respectively for untwinned datasets, and 0.333, 0.2 for perfectly twinned datasets.

## 5 Model quality

### 5.1 Standard geometry

Bond lengths and bond angles in the following residue types are not validated in this section: TAR, 314

The Z score for a bond length (or angle) is the number of standard deviations the observed value is removed from the expected value. A bond length (or angle) with  $|Z| > 5$  is considered an outlier worth inspection. RMSZ is the root-mean-square of all Z scores of the bond lengths (or angles).

Mol	Chain	Bond lengths		Bond angles	
		RMSZ	# Z  >5	RMSZ	# Z  >5
1	A	0.47	0/3138	0.80	0/4267
1	B	0.46	0/3130	0.80	0/4256
All	All	0.47	0/6268	0.80	0/8523

There are no bond length outliers.

There are no bond angle outliers.

There are no chirality outliers.

There are no planarity outliers.

### 5.2 Too-close contacts

In the following table, the Non-H and H(model) columns list the number of non-hydrogen atoms and hydrogen atoms in the chain respectively. The H(added) column lists the number of hydrogen atoms added and optimized by MolProbity. The Clashes column lists the number of clashes within the asymmetric unit, whereas Symm-Clashes lists symmetry related clashes.

Mol	Chain	Non-H	H(model)	H(added)	Clashes	Symm-Clashes
1	A	3060	0	2970	34	0
1	B	3052	0	2959	49	0
2	A	44	0	45	3	0
2	B	44	0	45	3	0
3	A	10	0	4	0	0
3	B	10	0	4	0	0
4	A	514	0	0	2	0
4	B	452	0	0	0	0
All	All	7186	0	6027	85	0

The all-atom clashscore is defined as the number of clashes found per 1000 atoms (including hydrogen atoms). The all-atom clashscore for this structure is 7.



All (85) close contacts within the same asymmetric unit are listed below, sorted by their clash magnitude.

Atom-1	Atom-2	Interatomic distance (Å)	Clash overlap (Å)
1:B:361:ILE:HD13	1:B:398:ILE:HD12	1.32	1.10
1:B:249:LEU:HD23	1:B:416:ALA:HB2	1.48	0.95
1:A:249:LEU:HD23	1:A:416:ALA:HB2	1.57	0.86
1:B:361:ILE:CD1	1:B:398:ILE:HD12	2.11	0.78
1:A:133:THR:HB	2:A:501:314:H5	1.75	0.68
1:B:126:LYS:HE3	1:B:141:LEU:HD12	1.75	0.67
1:B:361:ILE:HD13	1:B:398:ILE:CD1	2.20	0.66
1:B:210:LEU:HD23	1:B:211:PHE:N	2.11	0.65
1:A:361:ILE:HD13	1:A:398:ILE:HD12	1.79	0.64
1:A:328:LEU:O	1:A:328:LEU:HD12	1.98	0.63
1:A:63:MET:HG2	1:A:151:GLY:HA2	1.81	0.62
1:A:224:GLN:HG3	4:A:875:HOH:O	1.98	0.62
1:A:210:LEU:HD23	1:A:211:PHE:N	2.15	0.61
1:B:425:GLU:OE1	1:B:425:GLU:N	2.26	0.61
1:A:279:LYS:HZ2	1:A:445:TYR:HA	1.66	0.61
1:B:328:LEU:HD12	1:B:328:LEU:O	2.03	0.59
1:A:321:GLY:C	1:A:327:GLN:HG2	2.23	0.59
1:B:321:GLY:C	1:B:327:GLN:HG2	2.24	0.58
1:B:210:LEU:HD23	1:B:210:LEU:C	2.23	0.58
1:B:133:THR:HB	2:B:501:314:H5	1.86	0.58
1:B:375:THR:O	1:B:375:THR:HG22	2.04	0.57
1:A:328:LEU:C	1:A:328:LEU:HD12	2.25	0.57
1:B:249:LEU:CD2	1:B:416:ALA:HB2	2.30	0.57
1:A:210:LEU:HD23	1:A:210:LEU:C	2.26	0.55
1:A:425:GLU:HG2	4:A:683:HOH:O	2.06	0.55
1:B:355:GLN:HG3	1:B:434:PRO:HB2	1.89	0.55
1:B:276:MET:CE	1:B:300:LYS:HG2	2.36	0.54
1:B:276:MET:HE1	1:B:300:LYS:HG2	1.88	0.54
1:B:275:LYS:O	1:B:275:LYS:HG2	2.06	0.54
1:A:355:GLN:HG3	1:A:434:PRO:HB2	1.89	0.54
1:B:423:HIS:HD2	1:B:424:ASP:O	1.91	0.53
1:A:275:LYS:HG2	1:A:275:LYS:O	2.07	0.53
1:B:372:ASP:HB2	1:B:380:CYS:SG	2.48	0.53
1:B:328:LEU:HD12	1:B:328:LEU:C	2.30	0.52
1:B:134:GLN:HG2	2:B:501:314:H10	1.91	0.52
1:B:249:LEU:HD23	1:B:416:ALA:CB	2.32	0.52
1:A:423:HIS:HD2	1:A:424:ASP:O	1.92	0.52
2:B:501:314:H9	2:B:501:314:C3	2.40	0.51
1:A:372:ASP:HB2	1:A:380:CYS:SG	2.51	0.51
1:B:396:ALA:O	1:B:400:GLU:HG3	2.12	0.50

*Continued on next page...*

*Continued from previous page...*

Atom-1	Atom-2	Interatomic distance (Å)	Clash overlap (Å)
1:B:319:PRO:HG3	1:B:327:GLN:NE2	2.26	0.50
1:B:131:PRO:HG2	1:B:131:PRO:O	2.12	0.49
1:A:373:VAL:HG12	1:A:373:VAL:O	2.13	0.49
1:B:373:VAL:O	1:B:373:VAL:HG12	2.13	0.49
2:A:501:314:H9	2:A:501:314:C3	2.41	0.49
1:B:260:TYR:HB3	1:B:413:ILE:HD11	1.95	0.48
1:B:126:LYS:HE3	1:B:141:LEU:CD1	2.43	0.48
1:B:306:VAL:CG1	1:B:310:LYS:HE3	2.43	0.48
1:B:306:VAL:HG12	1:B:310:LYS:HE3	1.94	0.48
1:A:372:ASP:C	1:A:374:ALA:H	2.17	0.48
1:B:186:GLU:OE2	1:B:256:ARG:NH2	2.47	0.47
1:B:105:PRO:HD3	1:B:112:TYR:CZ	2.49	0.47
1:A:396:ALA:O	1:A:400:GLU:HG3	2.14	0.47
1:B:283:TYR:HA	1:B:284:ASP:HA	1.73	0.46
1:B:138:GLU:HB3	1:B:165:GLU:HB2	1.96	0.46
1:A:249:LEU:HD23	1:A:416:ALA:CB	2.36	0.45
1:A:279:LYS:NZ	1:A:445:TYR:HA	2.30	0.45
1:B:63:MET:HG2	1:B:151:GLY:HA2	1.98	0.45
1:A:134:GLN:HG3	1:A:135:GLY:N	2.31	0.45
1:A:319:PRO:HG3	1:A:327:GLN:NE2	2.31	0.45
1:A:131:PRO:HG2	1:A:131:PRO:O	2.17	0.45
1:B:425:GLU:H	1:B:425:GLU:CD	2.16	0.45
1:B:299:LYS:O	1:B:303:GLU:HG3	2.17	0.45
1:A:134:GLN:NE2	1:A:134:GLN:HA	2.32	0.44
1:B:259:TYR:CE2	1:B:285:LYS:HE3	2.52	0.44
1:A:328:LEU:C	1:A:328:LEU:CD1	2.86	0.44
1:B:303:GLU:O	1:B:307:LYS:HG3	2.18	0.43
1:A:306:VAL:CG1	1:A:310:LYS:HE3	2.47	0.43
1:A:260:TYR:HB3	1:A:413:ILE:HD11	2.01	0.43
1:B:62:GLU:H	1:B:62:GLU:CD	2.21	0.43
1:A:310:LYS:HE2	1:A:323:TRP:CD1	2.54	0.43
1:B:223:ASN:OD1	1:B:226:GLU:HG3	2.18	0.43
1:A:126:LYS:HD2	1:A:141:LEU:HD12	2.01	0.43
1:B:255:ARG:HD2	1:B:263:ILE:HD11	2.00	0.43
1:B:322:PHE:CD1	1:B:329:VAL:HG23	2.54	0.43
1:B:106:HIS:CG	1:B:107:PRO:HD2	2.55	0.42
1:A:134:GLN:HG2	2:A:501:314:H10	2.02	0.42
1:A:372:ASP:C	1:A:374:ALA:N	2.73	0.42
1:B:328:LEU:CD1	1:B:328:LEU:C	2.88	0.42
1:B:439:ASP:HB3	1:B:442:ASP:OD2	2.20	0.42
1:B:375:THR:O	1:B:376:SER:O	2.37	0.41

*Continued on next page...*

*Continued from previous page...*

Atom-1	Atom-2	Interatomic distance (Å)	Clash overlap (Å)
1:B:84:PRO:HA	1:B:85:PRO:HD3	1.97	0.41
1:B:424:ASP:HB2	1:B:425:GLU:OE1	2.19	0.41
1:A:306:VAL:HG12	1:A:310:LYS:HE3	2.00	0.41
1:A:283:TYR:HA	1:A:284:ASP:HA	1.75	0.41

There are no symmetry-related clashes.

## 5.3 Torsion angles [i](#)

### 5.3.1 Protein backbone [i](#)

In the following table, the Percentiles column shows the percent Ramachandran outliers of the chain as a percentile score with respect to all X-ray entries followed by that with respect to entries of similar resolution.

The Analysed column shows the number of residues for which the backbone conformation was analysed, and the total number of residues.

Mol	Chain	Analysed	Favoured	Allowed	Outliers	Percentiles	
1	A	388/390 (100%)	375 (97%)	10 (3%)	3 (1%)	24	7
1	B	387/390 (99%)	374 (97%)	11 (3%)	2 (0%)	34	15
All	All	775/780 (99%)	749 (97%)	21 (3%)	5 (1%)	30	12

All (5) Ramachandran outliers are listed below:

Mol	Chain	Res	Type
1	A	376	SER
1	B	376	SER
1	A	134	GLN
1	A	373	VAL
1	B	373	VAL

### 5.3.2 Protein sidechains [i](#)

In the following table, the Percentiles column shows the percent sidechain outliers of the chain as a percentile score with respect to all X-ray entries followed by that with respect to entries of similar resolution.

The Analysed column shows the number of residues for which the sidechain conformation was analysed, and the total number of residues.

Mol	Chain	Analysed	Rotameric	Outliers	Percentiles	
1	A	332/332 (100%)	312 (94%)	20 (6%)	24	7
1	B	331/332 (100%)	310 (94%)	21 (6%)	22	6
All	All	663/664 (100%)	622 (94%)	41 (6%)	23	6

All (41) residues with a non-rotameric sidechain are listed below:

Mol	Chain	Res	Type
1	A	84	PRO
1	A	85	PRO
1	A	105	PRO
1	A	107	PRO
1	A	131	PRO
1	A	149	PRO
1	A	152	PRO
1	A	190	PRO
1	A	196	PRO
1	A	208	PRO
1	A	221	PRO
1	A	253	PRO
1	A	258	TRP
1	A	298	PRO
1	A	319	PRO
1	A	328	LEU
1	A	337	PRO
1	A	342	PRO
1	A	369	PRO
1	A	434	PRO
1	B	84	PRO
1	B	85	PRO
1	B	105	PRO
1	B	107	PRO
1	B	131	PRO
1	B	149	PRO
1	B	152	PRO
1	B	190	PRO
1	B	196	PRO
1	B	208	PRO
1	B	221	PRO
1	B	253	PRO
1	B	258	TRP
1	B	298	PRO
1	B	319	PRO

*Continued on next page...*

*Continued from previous page...*

Mol	Chain	Res	Type
1	B	328	LEU
1	B	337	PRO
1	B	342	PRO
1	B	369	PRO
1	B	425	GLU
1	B	434	PRO

Some sidechains can be flipped to improve hydrogen bonding and reduce clashes. All (6) such sidechains are listed below:

Mol	Chain	Res	Type
1	A	172	ASN
1	A	327	GLN
1	A	423	HIS
1	B	89	ASN
1	B	172	ASN
1	B	423	HIS

### 5.3.3 RNA [i](#)

There are no RNA molecules in this entry.

## 5.4 Non-standard residues in protein, DNA, RNA chains [i](#)

There are no non-standard protein/DNA/RNA residues in this entry.

## 5.5 Carbohydrates [i](#)

There are no carbohydrates in this entry.

## 5.6 Ligand geometry [i](#)

4 ligands are modelled in this entry.

In the following table, the Counts columns list the number of bonds (or angles) for which Mogul statistics could be retrieved, the number of bonds (or angles) that are observed in the model and the number of bonds (or angles) that are defined in the chemical component dictionary. The Link column lists molecule types, if any, to which the group is linked. The Z score for a bond length (or angle) is the number of standard deviations the observed value is removed from the expected value. A bond length (or angle) with  $|Z| > 2$  is considered an outlier worth inspection. RMSZ is the root-mean-square of all Z scores of the bond lengths (or angles).

Mol	Type	Chain	Res	Link	Bond lengths			Bond angles		
					Counts	RMSZ	# Z  > 2	Counts	RMSZ	# Z  > 2
2	314	A	501	-	45,47,47	1.64	14 (31%)	60,64,64	1.09	4 (6%)
3	TAR	A	502	-	3,9,9	0.46	0	6,12,12	1.20	1 (16%)
2	314	B	501	-	45,47,47	1.64	15 (33%)	60,64,64	1.13	4 (6%)
3	TAR	B	503	-	3,9,9	0.44	0	6,12,12	1.25	1 (16%)

In the following table, the Chirals column lists the number of chiral outliers, the number of chiral centers analysed, the number of these observed in the model and the number defined in the chemical component dictionary. Similar counts are reported in the Torsion and Rings columns. '-' means no outliers of that kind were identified.

Mol	Type	Chain	Res	Link	Chirals	Torsions	Rings
2	314	A	501	-	-	0/38/48/48	0/4/4/4
3	TAR	A	502	-	2/2/4/4	0/4/12/12	0/0/0/0
2	314	B	501	-	-	0/38/48/48	0/4/4/4
3	TAR	B	503	-	2/2/4/4	0/4/12/12	0/0/0/0

All (29) bond length outliers are listed below:

Mol	Chain	Res	Type	Atoms	Z	Observed(Å)	Ideal(Å)
2	B	501	314	C35-C34	2.01	1.43	1.38
2	B	501	314	C34-C33	2.01	1.43	1.38
2	A	501	314	C32-C31	2.02	1.43	1.38
2	A	501	314	C20-C19	2.09	1.43	1.39
2	B	501	314	C32-C31	2.10	1.43	1.38
2	A	501	314	C33-C32	2.15	1.43	1.38
2	A	501	314	C1-C6	2.18	1.42	1.38
2	B	501	314	C20-C19	2.18	1.43	1.39
2	B	501	314	C1-C2	2.19	1.42	1.39
2	B	501	314	C1-C6	2.22	1.42	1.38
2	B	501	314	C24-C19	2.25	1.43	1.39
2	B	501	314	C3-C4	2.31	1.42	1.39
2	A	501	314	C1-C2	2.32	1.42	1.39
2	B	501	314	C5-C6	2.36	1.43	1.38
2	A	501	314	C3-C4	2.37	1.42	1.39
2	A	501	314	C24-C19	2.37	1.43	1.39
2	B	501	314	C5-C4	2.40	1.43	1.39
2	A	501	314	C22-C23	2.56	1.42	1.37
2	A	501	314	C5-C6	2.57	1.43	1.38
2	A	501	314	C5-C4	2.58	1.43	1.39
2	A	501	314	C22-C21	2.65	1.42	1.37
2	B	501	314	C22-C23	2.76	1.42	1.37

*Continued on next page...*

*Continued from previous page...*

Mol	Chain	Res	Type	Atoms	Z	Observed(Å)	Ideal(Å)
2	A	501	314	C3-C2	2.85	1.43	1.39
2	B	501	314	C3-C2	2.91	1.43	1.39
2	A	501	314	C24-C23	2.91	1.42	1.37
2	B	501	314	C22-C21	3.10	1.43	1.37
2	B	501	314	C24-C23	3.18	1.43	1.37
2	B	501	314	C20-C21	3.26	1.43	1.37
2	A	501	314	C20-C21	3.39	1.43	1.37

All (10) bond angle outliers are listed below:

Mol	Chain	Res	Type	Atoms	Z	Observed(°)	Ideal(°)
2	B	501	314	C22-C21-C20	-2.57	120.12	123.52
2	B	501	314	C24-C23-C22	-2.45	120.29	123.52
2	A	501	314	C22-C21-C20	-2.44	120.30	123.52
2	A	501	314	C24-C23-C22	-2.36	120.40	123.52
2	A	501	314	C31-C30-C27	-2.29	111.15	114.62
3	B	503	TAR	C4-C3-C2	-2.28	108.68	113.35
2	B	501	314	C31-C30-C27	-2.19	111.30	114.62
3	A	502	TAR	C4-C3-C2	-2.13	108.98	113.35
2	B	501	314	C23-C22-C21	2.43	119.78	116.07
2	A	501	314	C23-C22-C21	2.50	119.89	116.07

All (4) chirality outliers are listed below:

Mol	Chain	Res	Type	Atom
3	A	502	TAR	C2
3	A	502	TAR	C3
3	B	503	TAR	C2
3	B	503	TAR	C3

There are no torsion outliers.

There are no ring outliers.

2 monomers are involved in 6 short contacts:

Mol	Chain	Res	Type	Clashes	Symm-Clashes
2	A	501	314	3	0
2	B	501	314	3	0

## 5.7 Other polymers

There are no such residues in this entry.

## 5.8 Polymer linkage issues

There are no chain breaks in this entry.



## 6 Fit of model and data

### 6.1 Protein, DNA and RNA chains

In the following table, the column labelled ‘#RSRZ> 2’ contains the number (and percentage) of RSRZ outliers, followed by percent RSRZ outliers for the chain as percentile scores relative to all X-ray entries and entries of similar resolution. The OWAB column contains the minimum, median, 95<sup>th</sup> percentile and maximum values of the occupancy-weighted average B-factor per residue. The column labelled ‘Q< 0.9’ lists the number of (and percentage) of residues with an average occupancy less than 0.9.

Mol	Chain	Analysed	<RSRZ>	#RSRZ>2	OWAB(Å <sup>2</sup> )	Q<0.9
1	A	390/390 (100%)	0.13	19 (4%) 33 37	6, 13, 31, 64	0
1	B	389/390 (99%)	0.07	15 (3%) 43 48	6, 13, 30, 59	0
All	All	779/780 (99%)	0.10	34 (4%) 38 42	6, 13, 31, 64	0

All (34) RSRZ outliers are listed below:

Mol	Chain	Res	Type	RSRZ
1	A	373	VAL	9.3
1	B	373	VAL	8.4
1	B	375	THR	8.1
1	A	447	ILE	7.8
1	B	441	GLU	7.2
1	A	375	THR	7.0
1	B	438	LEU	6.5
1	A	441	GLU	6.3
1	A	438	LEU	5.2
1	B	437	THR	5.1
1	A	374	ALA	5.0
1	A	437	THR	4.4
1	A	353	THR	4.2
1	B	439	ASP	3.8
1	B	440	MET	3.8
1	B	353	THR	3.5
1	A	439	ASP	3.4
1	A	224	GLN	3.4
1	A	436	VAL	3.4
1	A	110	HIS	3.3
1	A	134	GLN	3.3
1	B	224	GLN	3.2
1	A	440	MET	3.0
1	B	206	HIS	2.9

*Continued on next page...*

*Continued from previous page...*

Mol	Chain	Res	Type	RSRZ
1	B	442	ASP	2.8
1	B	436	VAL	2.6
1	A	442	ASP	2.6
1	A	376	SER	2.6
1	B	59	SER	2.6
1	B	354	ASN	2.5
1	A	354	ASN	2.5
1	A	352	VAL	2.2
1	A	371	GLU	2.1
1	B	374	ALA	2.0

## 6.2 Non-standard residues in protein, DNA, RNA chains [i](#)

There are no non-standard protein/DNA/RNA residues in this entry.

## 6.3 Carbohydrates [i](#)

There are no carbohydrates in this entry.

## 6.4 Ligands [i](#)

In the following table, the Atoms column lists the number of modelled atoms in the group and the number defined in the chemical component dictionary. LLDF column lists the quality of electron density of the group with respect to its neighbouring residues in protein, DNA or RNA chains. The B-factors column lists the minimum, median, 95<sup>th</sup> percentile and maximum values of B factors of atoms in the group. The column labelled 'Q< 0.9' lists the number of atoms with occupancy less than 0.9.

Mol	Type	Chain	Res	Atoms	RSCC	RSR	LLDF	B-factors(Å <sup>2</sup> )	Q<0.9
3	TAR	B	503	10/10	0.89	0.27	3.98	26,32,35,37	0
3	TAR	A	502	10/10	0.82	0.31	2.84	26,33,36,38	0
2	314	B	501	44/44	0.96	0.10	0.19	5,11,15,20	0
2	314	A	501	44/44	0.95	0.09	-0.10	5,12,15,19	0

## 6.5 Other polymers [i](#)

There are no such residues in this entry.