



# Full wwPDB X-ray Structure Validation Report ⓘ

Feb 1, 2016 – 01:18 AM GMT

PDB ID : 2CMW  
Title : STRUCTURE OF HUMAN CASEIN KINASE 1 GAMMA-1 IN COMPLEX WITH 2-(2-HYDROXYETHYLAMINO)-6-(3-CHLOROANILINO)-9-ISOPROPYLPURINE (CASP TARGET)  
Authors : Bunkoczi, G.; Rellos, P.; Das, S.; Savitsky, P.; Niesen, F.; Sobott, F.; Fedorov, O.; Pike, A.C.W.; Von Delft, F.; Sundstrom, M.; Arrowsmith, C.; Edwards, A.; Weigelt, J.; Knapp, S.  
Deposited on : 2006-05-15  
Resolution : 1.75 Å(reported)

This is a Full wwPDB X-ray Structure Validation Report for a publicly released PDB entry.  
We welcome your comments at [validation@mail.wwpdb.org](mailto:validation@mail.wwpdb.org)  
A user guide is available at  
<http://wwpdb.org/validation/2016/XrayValidationReportHelp>  
with specific help available everywhere you see the ⓘ symbol.

---

The following versions of software and data (see [references ⓘ](#)) were used in the production of this report:

MolProbity : 4.02b-467  
Mogul : 1.7 (RC4), CSD as536be (2015)  
Xtriage (Phenix) : 1.9-1692  
EDS : rb-20026688  
Percentile statistics : 20151230.v01 (using entries in the PDB archive December 30th 2015)  
Refmac : 5.8.0135  
CCP4 : 6.5.0  
Ideal geometry (proteins) : Engh & Huber (2001)  
Ideal geometry (DNA, RNA) : Parkinson et al. (1996)  
Validation Pipeline (wwPDB-VP) : trunk26865

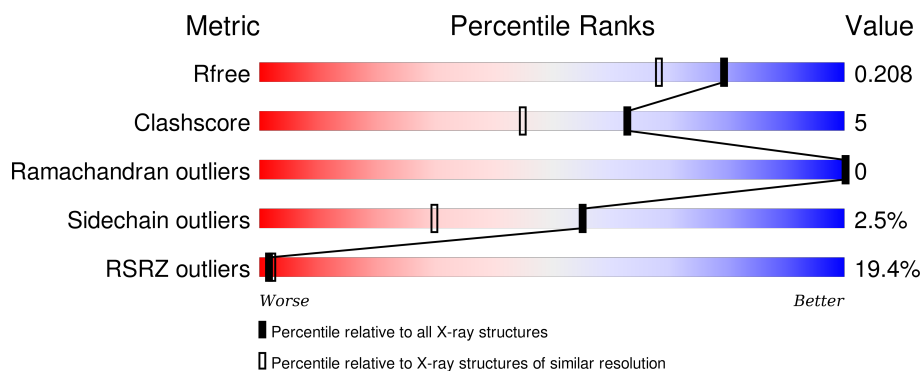
# 1 Overall quality at a glance

The following experimental techniques were used to determine the structure:

## *X-RAY DIFFRACTION*


The reported resolution of this entry is 1.75 Å.

Percentile scores (ranging between 0-100) for global validation metrics of the entry are shown in the following graphic. The table shows the number of entries on which the scores are based.



Metric	Whole archive (#Entries)	Similar resolution (#Entries, resolution range(Å))
$R_{free}$	91344	1609 (1.76-1.76)
Clashscore	102246	1730 (1.76-1.76)
Ramachandran outliers	100387	1711 (1.76-1.76)
Sidechain outliers	100360	1711 (1.76-1.76)
RSRZ outliers	91569	1610 (1.76-1.76)

The table below summarises the geometric issues observed across the polymeric chains and their fit to the electron density. The red, orange, yellow and green segments on the lower bar indicate the fraction of residues that contain outliers for  $\geq 3$ , 2, 1 and 0 types of geometric quality criteria. A grey segment represents the fraction of residues that are not modelled. The numeric value for each fraction is indicated below the corresponding segment, with a dot representing fractions  $\leq 5\%$ . The upper red bar (where present) indicates the fraction of residues that have poor fit to the electron density. The numeric value is given above the bar.

Mol	Chain	Length	Quality of chain
1	A	310	

The following table lists non-polymeric compounds, carbohydrate monomers and non-standard residues in protein, DNA, RNA chains that are outliers for geometric or electron-density-fit criteria:

Mol	Type	Chain	Res	Chirality	Geometry	Clashes	Electron density
3	PO4	A	1343	-	-	-	X

## 2 Entry composition [i](#)

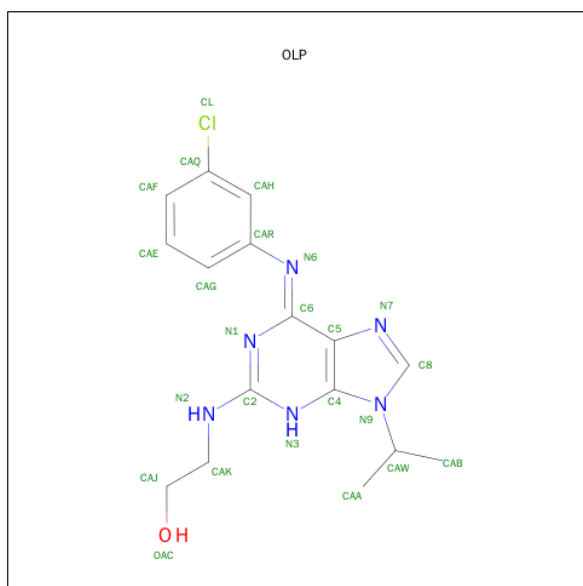
There are 5 unique types of molecules in this entry. The entry contains 2782 atoms, of which 0 are hydrogens and 0 are deuteriums.

In the tables below, the ZeroOcc column contains the number of atoms modelled with zero occupancy, the AltConf column contains the number of residues with at least one atom in alternate conformation and the Trace column contains the number of residues modelled with at most 2 atoms.

- Molecule 1 is a protein called CASEIN KINASE I ISOFORM GAMMA-1.

Mol	Chain	Residues	Atoms					ZeroOcc	AltConf	Trace
1	A	295	Total	C	N	O	S	0	5	0
			2405	1561	403	426	15			

- Molecule 2 is 2-(2-HYDROXYETHYLAMINO)-6-(3-CHLOROANILINO)-9-ISOPROPYL PURINE (three-letter code: OLP) (formula: C<sub>16</sub>H<sub>19</sub>ClN<sub>6</sub>O).



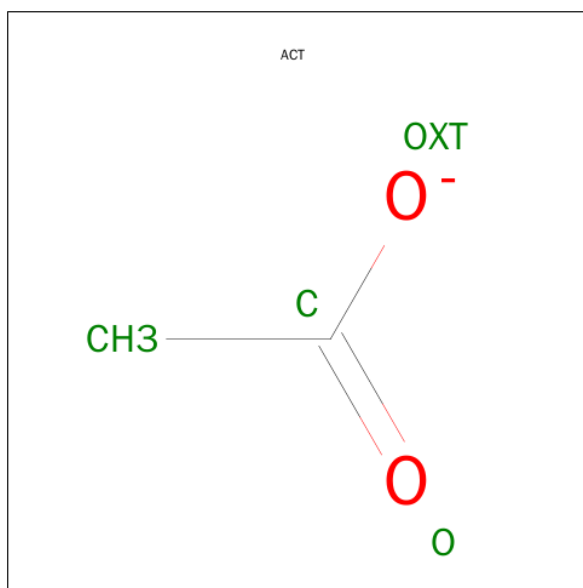
Mol	Chain	Residues	Atoms					ZeroOcc	AltConf
2	A	1	Total	C	Cl	N	O	0	1
			27	18	1	6	2		
2	A	1	Total	C	Cl	N	O	0	0
			24	16	1	6	1		
2	A	1	Total	C	Cl	N	O	0	0
			24	16	1	6	1		

- Molecule 3 is PHOSPHATE ION (three-letter code: PO<sub>4</sub>) (formula: O<sub>4</sub>P).



Mol	Chain	Residues	Atoms			ZeroOcc	AltConf
3	A	1	Total	O	P	0	0
			5	4	1		

- Molecule 4 is ACETATE ION (three-letter code: ACT) (formula:  $C_2H_3O_2$ ).



Mol	Chain	Residues	Atoms			ZeroOcc	AltConf
4	A	1	Total	C	O	0	0
			4	2	2		

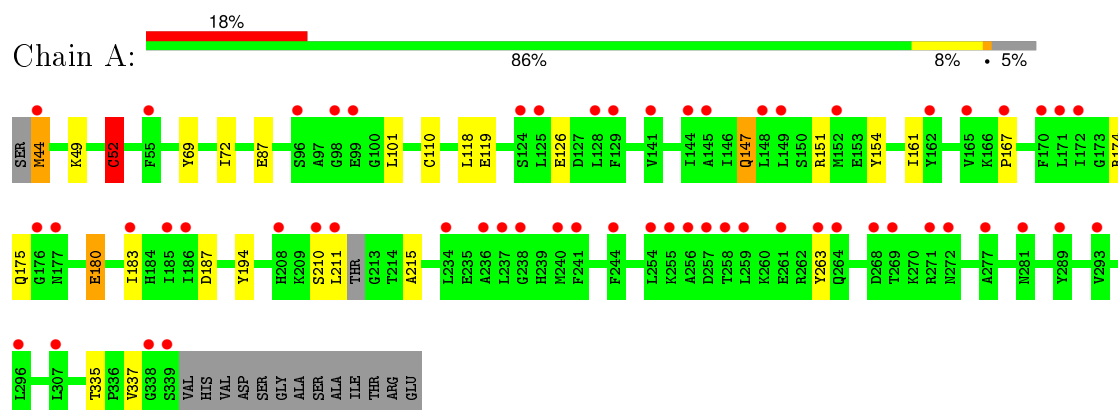
- Molecule 5 is water.

Mol	Chain	Residues	Atoms		ZeroOcc	AltConf
5	A	293	Total 293	O 293	0	0

### 3 Residue-property plots

These plots are drawn for all protein, RNA and DNA chains in the entry. The first graphic for a chain summarises the proportions of errors displayed in the second graphic. The second graphic shows the sequence view annotated by issues in geometry and electron density. Residues are color-coded according to the number of geometric quality criteria for which they contain at least one outlier: green = 0, yellow = 1, orange = 2 and red = 3 or more. A red dot above a residue indicates a poor fit to the electron density ( $RSRZ > 2$ ). Stretches of 2 or more consecutive residues without any outlier are shown as a green connector. Residues present in the sample, but not in the model, are shown in grey.

- Molecule 1: CASEIN KINASE I ISOFORM GAMMA-1



## 4 Data and refinement statistics

Property	Value	Source
Space group	P 21 21 21	Depositor
Cell constants a, b, c, $\alpha$ , $\beta$ , $\gamma$	50.22Å 57.17Å 129.23Å 90.00° 90.00° 90.00°	Depositor
Resolution (Å)	50.00 – 1.75 34.40 – 1.75	Depositor EDS
% Data completeness (in resolution range)	99.8 (50.00-1.75) 99.8 (34.40-1.75)	Depositor EDS
$R_{merge}$	0.07	Depositor
$R_{sym}$	(Not available)	Depositor
$\langle I/\sigma(I) \rangle$ <sup>1</sup>	1.58 (at 1.75Å)	Xtriage
Refinement program	REFMAC 5.2.0019	Depositor
R, $R_{free}$	0.165 , 0.204 0.174 , 0.208	Depositor DCC
$R_{free}$ test set	1914 reflections (5.27%)	DCC
Wilson B-factor (Å <sup>2</sup> )	23.2	Xtriage
Anisotropy	0.130	Xtriage
Bulk solvent $k_{sol}$ (e/Å <sup>3</sup> ), $B_{sol}$ (Å <sup>2</sup> )	0.32 , 47.5	EDS
Estimated twinning fraction	No twinning to report.	Xtriage
L-test for twinning <sup>2</sup>	$\langle  L  \rangle = 0.46$ , $\langle L^2 \rangle = 0.29$	Xtriage
Outliers	0 of 38202 reflections	Xtriage
$F_o, F_c$ correlation	0.95	EDS
Total number of atoms	2782	wwPDB-VP
Average B, all atoms (Å <sup>2</sup> )	38.0	wwPDB-VP

Xtriage's analysis on translational NCS is as follows: *The largest off-origin peak in the Patterson function is 6.00% of the height of the origin peak. No significant pseudotranslation is detected.*

<sup>1</sup>Intensities estimated from amplitudes.

<sup>2</sup>Theoretical values of  $\langle |L| \rangle$ ,  $\langle L^2 \rangle$  for acentric reflections are 0.5, 0.375 respectively for untwinned datasets, and 0.333, 0.2 for perfectly twinned datasets.

## 5 Model quality [i](#)

### 5.1 Standard geometry [i](#)

Bond lengths and bond angles in the following residue types are not validated in this section: OLP, PO4, SCS, ACT

The Z score for a bond length (or angle) is the number of standard deviations the observed value is removed from the expected value. A bond length (or angle) with  $|Z| > 5$  is considered an outlier worth inspection. RMSZ is the root-mean-square of all Z scores of the bond lengths (or angles).

Mol	Chain	Bond lengths		Bond angles	
		RMSZ	$\# Z  > 5$	RMSZ	$\# Z  > 5$
1	A	0.51	1/2472 (0.0%)	0.66	1/3337 (0.0%)

All (1) bond length outliers are listed below:

Mol	Chain	Res	Type	Atoms	Z	Observed(Å)	Ideal(Å)
1	A	52	CYS	CB-SG	-6.21	1.71	1.82

All (1) bond angle outliers are listed below:

Mol	Chain	Res	Type	Atoms	Z	Observed(°)	Ideal(°)
1	A	151	ARG	NE-CZ-NH1	5.04	122.82	120.30

There are no chirality outliers.

There are no planarity outliers.

### 5.2 Too-close contacts [i](#)

In the following table, the Non-H and H(model) columns list the number of non-hydrogen atoms and hydrogen atoms in the chain respectively. The H(added) column lists the number of hydrogen atoms added and optimized by MolProbity. The Clashes column lists the number of clashes within the asymmetric unit, whereas Symm-Clashes lists symmetry related clashes.

Mol	Chain	Non-H	H(model)	H(added)	Clashes	Symm-Clashes
1	A	2405	0	2347	24	0
2	A	75	0	50	4	0
3	A	5	0	0	0	0
4	A	4	0	3	0	0
5	A	293	0	0	1	1
All	All	2782	0	2400	26	1



The all-atom clashscore is defined as the number of clashes found per 1000 atoms (including hydrogen atoms). The all-atom clashscore for this structure is 5.

All (26) close contacts within the same asymmetric unit are listed below, sorted by their clash magnitude.

Atom-1	Atom-2	Interatomic distance (Å)	Clash overlap (Å)
1:A:44:MET:CE	1:A:44:MET:N	2.23	1.01
1:A:49:LYS:NZ	1:A:52:CYS:SG	2.42	0.92
1:A:44:MET:N	1:A:44:MET:HE2	1.96	0.81
1:A:44:MET:N	1:A:44:MET:HE3	1.96	0.79
1:A:49:LYS:CE	1:A:52:CYS:SG	2.83	0.67
1:A:175:GLN:HA	1:A:180:GLU:HG2	1.78	0.65
1:A:72:ILE:HG21	1:A:110[A]:SCS:H6	1.85	0.58
1:A:215:ALA:HB2	1:A:263:TYR:CE2	2.42	0.54
1:A:174:ARG:HD2	5:A:2277:HOH:O	2.07	0.54
1:A:110[A]:SCS:H7	2:A:1342:OLP:H2	1.72	0.53
1:A:175:GLN:HA	1:A:180:GLU:CG	2.39	0.53
1:A:69:TYR:CE2	1:A:337:VAL:HG21	2.46	0.51
1:A:210:SER:O	1:A:211:LEU:HB2	2.14	0.48
2:A:1342:OLP:N1	2:A:1342:OLP:HAG	2.29	0.47
1:A:69:TYR:CZ	1:A:337:VAL:HG21	2.50	0.46
2:A:1341:OLP:N1	2:A:1341:OLP:HAG	2.30	0.46
1:A:126:GLU:HB2	1:A:167:PRO:HB2	1.98	0.46
1:A:49:LYS:HE2	1:A:52:CYS:SG	2.56	0.46
1:A:72:ILE:HD13	1:A:110[A]:SCS:H5	1.98	0.45
1:A:87:GLU:OE2	1:A:187:ASP:HA	2.16	0.45
1:A:101:LEU:HD11	1:A:154:TYR:CE2	2.51	0.45
1:A:161:ILE:HG23	1:A:194:TYR:CD2	2.54	0.43
1:A:110[A]:SCS:H7	2:A:1342:OLP:N2	2.33	0.43
1:A:44:MET:N	1:A:44:MET:SD	2.92	0.42
1:A:147[A]:GLN:HE22	1:A:183:ILE:HG13	1.84	0.42

All (1) symmetry-related close contacts are listed below. The label for Atom-2 includes the symmetry operator and encoded unit-cell translations to be applied.

Atom-1	Atom-2	Interatomic distance (Å)	Clash overlap (Å)
5:A:2072:HOH:O	5:A:2233:HOH:O[3_645]	2.17	0.03

## 5.3 Torsion angles [i](#)

### 5.3.1 Protein backbone [i](#)

In the following table, the Percentiles column shows the percent Ramachandran outliers of the chain as a percentile score with respect to all X-ray entries followed by that with respect to entries of similar resolution.

The Analysed column shows the number of residues for which the backbone conformation was analysed, and the total number of residues.

Mol	Chain	Analysed	Favoured	Allowed	Outliers	Percentiles	
1	A	294/310 (95%)	285 (97%)	9 (3%)	0	100	100

There are no Ramachandran outliers to report.

### 5.3.2 Protein sidechains [i](#)

In the following table, the Percentiles column shows the percent sidechain outliers of the chain as a percentile score with respect to all X-ray entries followed by that with respect to entries of similar resolution.

The Analysed column shows the number of residues for which the sidechain conformation was analysed, and the total number of residues.

Mol	Chain	Analysed	Rotameric	Outliers	Percentiles	
1	A	243/271 (90%)	235 (97%)	8 (3%)	45	19

All (8) residues with a non-rotameric sidechain are listed below:

Mol	Chain	Res	Type
1	A	44	MET
1	A	52	CYS
1	A	118	LEU
1	A	147[A]	GLN
1	A	147[B]	GLN
1	A	180	GLU
1	A	335[A]	THR
1	A	335[B]	THR

Some sidechains can be flipped to improve hydrogen bonding and reduce clashes. All (1) such sidechains are listed below:

Mol	Chain	Res	Type
1	A	54	ASN

### 5.3.3 RNA ⓘ

There are no RNA molecules in this entry.

## 5.4 Non-standard residues in protein, DNA, RNA chains ⓘ

2 non-standard protein/DNA/RNA residues are modelled in this entry.

In the following table, the Counts columns list the number of bonds (or angles) for which Mogul statistics could be retrieved, the number of bonds (or angles) that are observed in the model and the number of bonds (or angles) that are defined in the chemical component dictionary. The Link column lists molecule types, if any, to which the group is linked. The Z score for a bond length (or angle) is the number of standard deviations the observed value is removed from the expected value. A bond length (or angle) with  $|Z| > 2$  is considered an outlier worth inspection. RMSZ is the root-mean-square of all Z scores of the bond lengths (or angles).

Mol	Type	Chain	Res	Link	Bond lengths			Bond angles		
					Counts	RMSZ	$\# Z  > 2$	Counts	RMSZ	$\# Z  > 2$
1	SCS	A	110[A]	-	7,8,9	0.68	0	4,8,10	2.89	2 (50%)
1	SCS	A	110[B]	-	7,8,9	0.53	0	4,8,10	3.56	2 (50%)

In the following table, the Chirals column lists the number of chiral outliers, the number of chiral centers analysed, the number of these observed in the model and the number defined in the chemical component dictionary. Similar counts are reported in the Torsion and Rings columns. '-' means no outliers of that kind were identified.

Mol	Type	Chain	Res	Link	Chirals	Torsions	Rings
1	SCS	A	110[A]	-	-	0/3/7/9	0/0/0/0
1	SCS	A	110[B]	-	-	0/3/7/9	0/0/0/0

There are no bond length outliers.

All (4) bond angle outliers are listed below:

Mol	Chain	Res	Type	Atoms	Z	Observed(°)	Ideal(°)
1	A	110[B]	SCS	CB-SG-SD	-6.23	91.82	103.95
1	A	110[B]	SCS	O-C-CA	-3.21	117.13	125.49
1	A	110[A]	SCS	O-C-CA	-3.21	117.13	125.49
1	A	110[A]	SCS	CB-SG-SD	4.80	113.30	103.95

There are no chirality outliers.

There are no torsion outliers.

There are no ring outliers.

1 monomer is involved in 4 short contacts:

Mol	Chain	Res	Type	Clashes	Symm-Clashes
1	A	110[A]	SCS	4	0

## 5.5 Carbohydrates [i](#)

There are no carbohydrates in this entry.

## 5.6 Ligand geometry [i](#)

6 ligands are modelled in this entry.

In the following table, the Counts columns list the number of bonds (or angles) for which Mogul statistics could be retrieved, the number of bonds (or angles) that are observed in the model and the number of bonds (or angles) that are defined in the chemical component dictionary. The Link column lists molecule types, if any, to which the group is linked. The Z score for a bond length (or angle) is the number of standard deviations the observed value is removed from the expected value. A bond length (or angle) with  $|Z| > 2$  is considered an outlier worth inspection. RMSZ is the root-mean-square of all Z scores of the bond lengths (or angles).

Mol	Type	Chain	Res	Link	Bond lengths			Bond angles		
					Counts	RMSZ	# $ Z  > 2$	Counts	RMSZ	# $ Z  > 2$
2	OLP	A	1340[A]	-	20,26,26	3.28	4 (20%)	17,36,36	1.48	2 (11%)
2	OLP	A	1340[B]	-	20,26,26	3.29	4 (20%)	17,36,36	1.48	2 (11%)
2	OLP	A	1341	-	20,26,26	4.21	5 (25%)	17,36,36	2.20	3 (17%)
2	OLP	A	1342	-	20,26,26	4.03	5 (25%)	17,36,36	2.16	4 (23%)
3	PO4	A	1343	-	4,4,4	0.49	0	6,6,6	0.28	0
4	ACT	A	1344	-	1,3,3	1.10	0	0,3,3	0.00	-

In the following table, the Chirals column lists the number of chiral outliers, the number of chiral centers analysed, the number of these observed in the model and the number defined in the chemical component dictionary. Similar counts are reported in the Torsion and Rings columns. '-' means no outliers of that kind were identified.

Mol	Type	Chain	Res	Link	Chirals	Torsions	Rings
2	OLP	A	1340[A]	-	-	0/8/12/12	0/2/3/3
2	OLP	A	1340[B]	-	-	0/8/12/12	0/2/3/3
2	OLP	A	1341	-	-	0/8/12/12	0/2/3/3
2	OLP	A	1342	-	-	0/8/12/12	0/2/3/3

*Continued on next page...*

*Continued from previous page...*

Mol	Type	Chain	Res	Link	Chirals	Torsions	Rings
3	PO4	A	1343	-	-	0/0/0/0	0/0/0/0
4	ACT	A	1344	-	-	0/0/0/0	0/0/0/0

All (18) bond length outliers are listed below:

Mol	Chain	Res	Type	Atoms	Z	Observed(Å)	Ideal(Å)
2	A	1341	OLP	C4-N9	-13.61	1.29	1.47
2	A	1342	OLP	C4-N9	-12.58	1.31	1.47
2	A	1341	OLP	C5-N7	-10.92	1.33	1.47
2	A	1342	OLP	C5-N7	-10.85	1.34	1.47
2	A	1340[A]	OLP	C4-N9	-10.84	1.33	1.47
2	A	1340[B]	OLP	C4-N9	-10.84	1.33	1.47
2	A	1340[A]	OLP	C5-N7	-8.35	1.37	1.47
2	A	1340[B]	OLP	C5-N7	-8.35	1.37	1.47
2	A	1342	OLP	C8-N9	-5.66	1.30	1.46
2	A	1341	OLP	C8-N9	-4.57	1.33	1.46
2	A	1340[A]	OLP	C8-N9	-3.63	1.36	1.46
2	A	1340[B]	OLP	C8-N9	-3.63	1.36	1.46
2	A	1341	OLP	CAR-N6	-3.34	1.36	1.42
2	A	1342	OLP	CAR-N6	-2.33	1.38	1.42
2	A	1342	OLP	C2-N1	-2.24	1.34	1.44
2	A	1341	OLP	C2-N1	-2.22	1.34	1.44
2	A	1340[A]	OLP	C2-N1	-2.06	1.35	1.44
2	A	1340[B]	OLP	C2-N1	-2.06	1.35	1.44

All (11) bond angle outliers are listed below:

Mol	Chain	Res	Type	Atoms	Z	Observed(°)	Ideal(°)
2	A	1342	OLP	CAG-CAR-N6	2.07	126.02	120.43
2	A	1341	OLP	C2-N3-C4	2.68	116.56	111.61
2	A	1342	OLP	C2-N3-C4	3.16	117.45	111.61
2	A	1340[A]	OLP	C2-N3-C4	3.26	117.64	111.61
2	A	1340[B]	OLP	C2-N3-C4	3.26	117.64	111.61
2	A	1340[A]	OLP	C8-N9-C4	3.68	109.50	104.94
2	A	1340[B]	OLP	C8-N9-C4	3.68	109.50	104.94
2	A	1342	OLP	C8-N9-C4	4.63	110.68	104.94
2	A	1341	OLP	CAR-CAH-CAQ	5.10	122.37	119.07
2	A	1342	OLP	CAR-CAH-CAQ	5.33	122.51	119.07
2	A	1341	OLP	C8-N9-C4	5.54	111.81	104.94

There are no chirality outliers.

There are no torsion outliers.

There are no ring outliers.

2 monomers are involved in 4 short contacts:

Mol	Chain	Res	Type	Clashes	Symm-Clashes
2	A	1341	OLP	1	0
2	A	1342	OLP	3	0

## 5.7 Other polymers [i](#)

There are no such residues in this entry.

## 5.8 Polymer linkage issues [i](#)

There are no chain breaks in this entry.

## 6 Fit of model and data ⓘ

### 6.1 Protein, DNA and RNA chains ⓘ

In the following table, the column labelled ‘#RSRZ> 2’ contains the number (and percentage) of RSRZ outliers, followed by percent RSRZ outliers for the chain as percentile scores relative to all X-ray entries and entries of similar resolution. The OWAB column contains the minimum, median, 95<sup>th</sup> percentile and maximum values of the occupancy-weighted average B-factor per residue. The column labelled ‘Q< 0.9’ lists the number of (and percentage) of residues with an average occupancy less than 0.9.

Mol	Chain	Analysed	<RSRZ>	#RSRZ>2	OWAB(Å <sup>2</sup> )	Q<0.9
1	A	294/310 (94%)	1.19	57 (19%) ⓘ ⓘ	26, 36, 60, 90	0

All (57) RSRZ outliers are listed below:

Mol	Chain	Res	Type	RSRZ
1	A	257	ASP	7.0
1	A	237	LEU	6.2
1	A	176	GLY	6.1
1	A	258	THR	5.6
1	A	259	LEU	5.1
1	A	165	VAL	5.1
1	A	339	SER	4.9
1	A	125	LEU	4.7
1	A	170	PHE	4.6
1	A	208	HIS	4.6
1	A	144	ILE	4.5
1	A	148	LEU	4.3
1	A	272	ASN	4.3
1	A	256	ALA	4.2
1	A	281	ASN	3.9
1	A	236	ALA	3.9
1	A	234	LEU	3.8
1	A	240	MET	3.8
1	A	55	PHE	3.8
1	A	44	MET	3.8
1	A	210	SER	3.8
1	A	186	ILE	3.7
1	A	98	GLY	3.6
1	A	244	PHE	3.6
1	A	96	SER	3.6
1	A	241	PHE	3.6
1	A	261	GLU	3.4

*Continued on next page...*

*Continued from previous page...*

Mol	Chain	Res	Type	RSRZ
1	A	263	TYR	3.3
1	A	264	GLN	3.3
1	A	185	ILE	3.3
1	A	211	LEU	3.2
1	A	177	ASN	3.2
1	A	277	ALA	3.1
1	A	255	LYS	3.1
1	A	167	PRO	3.0
1	A	293	VAL	3.0
1	A	238	GLY	3.0
1	A	99	GLU	3.0
1	A	338	GLY	2.9
1	A	183	ILE	2.8
1	A	289	TYR	2.8
1	A	149	LEU	2.8
1	A	307	LEU	2.7
1	A	269	THR	2.7
1	A	171	LEU	2.6
1	A	145	ALA	2.5
1	A	271	ARG	2.5
1	A	129	PHE	2.5
1	A	162	TYR	2.4
1	A	296	LEU	2.4
1	A	268	ASP	2.4
1	A	128	LEU	2.3
1	A	152	MET	2.3
1	A	254	LEU	2.2
1	A	124	SER	2.1
1	A	141	VAL	2.1
1	A	172	ILE	2.1

## 6.2 Non-standard residues in protein, DNA, RNA chains ⓘ

In the following table, the Atoms column lists the number of modelled atoms in the group and the number defined in the chemical component dictionary. LLDF column lists the quality of electron density of the group with respect to its neighbouring residues in protein, DNA or RNA chains. The B-factors column lists the minimum, median, 95<sup>th</sup> percentile and maximum values of B factors of atoms in the group. The column labelled 'Q< 0.9' lists the number of atoms with occupancy less than 0.9.

Mol	Type	Chain	Res	Atoms	RSCC	RSR	LLDF	B-factors(Å <sup>2</sup> )	Q<0.9
1	SCS	A	110[B]	9/10	0.95	0.14	-	29,32,35,43	4

*Continued on next page...*



*Continued from previous page...*

Mol	Type	Chain	Res	Atoms	RSCC	RSR	LLDF	B-factors( $\text{\AA}^2$ )	Q<0.9
1	SCS	A	110[A]	9/10	0.95	0.14	-	24,32,41,54	4

### 6.3 Carbohydrates [i](#)

There are no carbohydrates in this entry.

### 6.4 Ligands [i](#)

In the following table, the Atoms column lists the number of modelled atoms in the group and the number defined in the chemical component dictionary. LLDF column lists the quality of electron density of the group with respect to its neighbouring residues in protein, DNA or RNA chains. The B-factors column lists the minimum, median, 95<sup>th</sup> percentile and maximum values of B factors of atoms in the group. The column labelled 'Q< 0.9' lists the number of atoms with occupancy less than 0.9.

Mol	Type	Chain	Res	Atoms	RSCC	RSR	LLDF	B-factors( $\text{\AA}^2$ )	Q<0.9
3	PO4	A	1343	5/5	0.96	0.26	4.54	39,48,56,65	0
2	OLP	A	1342	24/24	0.98	0.11	-0.22	15,20,28,34	0
2	OLP	A	1340[A]	24/24	0.97	0.09	-1.55	15,19,23,34	3
2	OLP	A	1340[B]	24/24	0.97	0.09	-2.28	15,19,23,47	3
2	OLP	A	1341	24/24	0.98	0.08	-2.30	16,21,28,29	0
4	ACT	A	1344	4/4	0.94	0.21	-	37,46,49,53	0

### 6.5 Other polymers [i](#)

There are no such residues in this entry.