



Full wwPDB X-ray Structure Validation Report ⓘ

Feb 1, 2016 – 07:56 AM GMT

PDB ID : 3CPB
Title : Crystal structure of the VEGFR2 kinase domain in complex with a bisamide inhibitor
Authors : Whittington, D.A.; Long, A.M.; Rose, P.; Gu, Y.; Zhao, H.
Deposited on : 2008-03-31
Resolution : 2.70 Å(reported)

This is a Full wwPDB X-ray Structure Validation Report for a publicly released PDB entry.
We welcome your comments at validation@mail.wwpdb.org
A user guide is available at
<http://wwpdb.org/validation/2016/XrayValidationReportHelp>
with specific help available everywhere you see the ⓘ symbol.

The following versions of software and data (see [references ⓘ](#)) were used in the production of this report:

MolProbity : 4.02b-467
Mogul : 1.7 (RC4), CSD as536be (2015)
Xtriage (Phenix) : 1.9-1692
EDS : rb-20026688
Percentile statistics : 20151230.v01 (using entries in the PDB archive December 30th 2015)
Refmac : 5.8.0135
CCP4 : 6.5.0
Ideal geometry (proteins) : Engh & Huber (2001)
Ideal geometry (DNA, RNA) : Parkinson et al. (1996)
Validation Pipeline (wwPDB-VP) : trunk26865

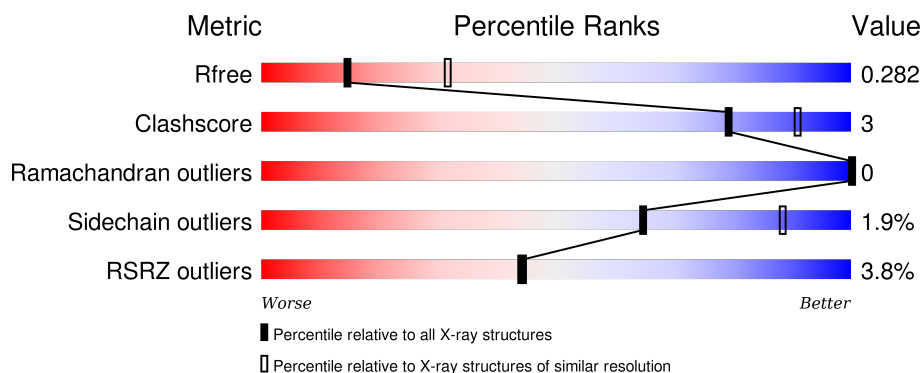
1 Overall quality at a glance

The following experimental techniques were used to determine the structure:

X-RAY DIFFRACTION



The reported resolution of this entry is 2.70 Å.

Percentile scores (ranging between 0-100) for global validation metrics of the entry are shown in the following graphic. The table shows the number of entries on which the scores are based.



Metric	Whole archive (#Entries)	Similar resolution (#Entries, resolution range(Å))
R_{free}	91344	2103 (2.70-2.70)
Clashscore	102246	2422 (2.70-2.70)
Ramachandran outliers	100387	2382 (2.70-2.70)
Sidechain outliers	100360	2382 (2.70-2.70)
RSRZ outliers	91569	2107 (2.70-2.70)

The table below summarises the geometric issues observed across the polymeric chains and their fit to the electron density. The red, orange, yellow and green segments on the lower bar indicate the fraction of residues that contain outliers for ≥ 3 , 2, 1 and 0 types of geometric quality criteria. A grey segment represents the fraction of residues that are not modelled. The numeric value for each fraction is indicated below the corresponding segment, with a dot representing fractions $\leq 5\%$. The upper red bar (where present) indicates the fraction of residues that have poor fit to the electron density. The numeric value is given above the bar.

Mol	Chain	Length	Quality of chain
1	A	314	 4% 85% 5% • 9%
1	B	314	 3% 74% 9% 16%

2 Entry composition

There are 3 unique types of molecules in this entry. The entry contains 4546 atoms, of which 0 are hydrogens and 0 are deuteriums.

In the tables below, the ZeroOcc column contains the number of atoms modelled with zero occupancy, the AltConf column contains the number of residues with at least one atom in alternate conformation and the Trace column contains the number of residues modelled with at most 2 atoms.

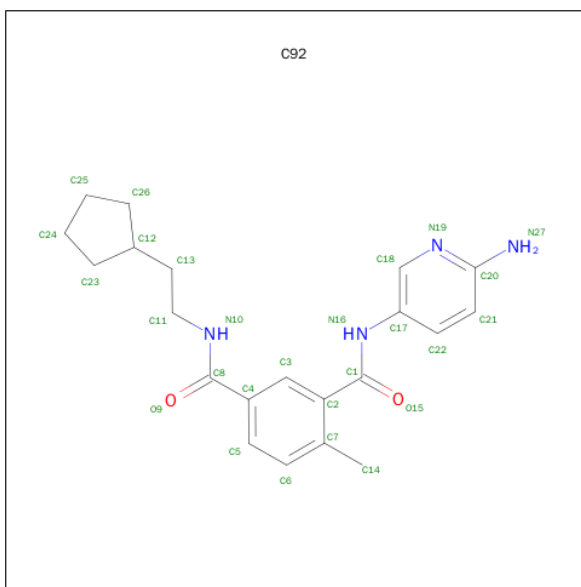
- Molecule 1 is a protein called Vascular endothelial growth factor receptor 2.

Mol	Chain	Residues	Atoms					ZeroOcc	AltConf	Trace
1	A	285	Total	C	N	O	S	0	0	0
			2313	1483	406	408	16			
1	B	263	Total	C	N	O	S	0	0	0
			2116	1365	362	373	16			

There are 10 discrepancies between the modelled and reference sequences:

Chain	Residue	Modelled	Actual	Comment	Reference
A	817	ALA	CYS	engineered	UNP P35968
A	916	THR	VAL	engineered	UNP P35968
A	990	VAL	GLU	engineered	UNP P35968
A	1172	ARG	-	expression tag	UNP P35968
A	1173	HIS	-	expression tag	UNP P35968
A	1174	HIS	-	expression tag	UNP P35968
A	1175	HIS	-	expression tag	UNP P35968
A	1176	HIS	-	expression tag	UNP P35968
A	1177	HIS	-	expression tag	UNP P35968
A	1178	HIS	-	expression tag	UNP P35968

- Molecule 2 is N'-(6-AMINOPYRIDIN-3-YL)-N-(2-CYCLOPENTYLETHYL)-4-METHYL-BENZENE-1,3-DICARBOXAMIDE (three-letter code: C92) (formula: C₂₁H₂₆N₄O₂).

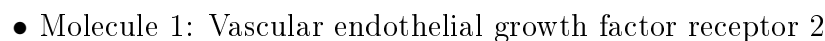


Mol	Chain	Residues	Atoms				ZeroOcc	AltConf
2	A	1	Total	C	N	O	0	0
			27	21	4	2		
2	B	1	Total	C	N	O	0	0
			27	21	4	2		

- Molecule 3 is water.

Mol	Chain	Residues	Atoms		ZeroOcc	AltConf
3	A	47	Total	O	0	0
			47	47		
3	B	16	Total	O	0	0
			16	16		

- Molecule 1: Vascular endothelial growth factor receptor 2



4 Data and refinement statistics

Property	Value	Source
Space group	P 1 21 1	Depositor
Cell constants a, b, c, α , β , γ	54.92Å 67.55Å 88.73Å 90.00° 92.52° 90.00°	Depositor
Resolution (Å)	30.00 – 2.70 29.55 – 2.70	Depositor EDS
% Data completeness (in resolution range)	99.7 (30.00-2.70) 99.7 (29.55-2.70)	Depositor EDS
R_{merge}	0.13	Depositor
R_{sym}	(Not available)	Depositor
$\langle I/\sigma(I) \rangle$ ¹	1.92 (at 2.68Å)	Xtriage
Refinement program	REFMAC5	Depositor
R, R_{free}	0.219 , 0.286 0.221 , 0.282	Depositor DCC
R_{free} test set	1408 reflections (8.50%)	DCC
Wilson B-factor (Å ²)	34.4	Xtriage
Anisotropy	0.107	Xtriage
Bulk solvent k_{sol} (e/Å ³), B_{sol} (Å ²)	0.34 , 34.4	EDS
Estimated twinning fraction	0.028 for h,-k,-l	Xtriage
L-test for twinning ²	$\langle L \rangle = 0.50$, $\langle L^2 \rangle = 0.33$	Xtriage
Outliers	0 of 18003 reflections	Xtriage
F_o, F_c correlation	0.91	EDS
Total number of atoms	4546	wwPDB-VP
Average B, all atoms (Å ²)	31.0	wwPDB-VP

Xtriage's analysis on translational NCS is as follows: *The largest off-origin peak in the Patterson function is 5.60% of the height of the origin peak. No significant pseudotranslation is detected.*

¹Intensities estimated from amplitudes.

²Theoretical values of $\langle |L| \rangle$, $\langle L^2 \rangle$ for acentric reflections are 0.5, 0.375 respectively for untwinned datasets, and 0.333, 0.2 for perfectly twinned datasets.

5 Model quality

5.1 Standard geometry

Bond lengths and bond angles in the following residue types are not validated in this section: C92

The Z score for a bond length (or angle) is the number of standard deviations the observed value is removed from the expected value. A bond length (or angle) with $|Z| > 5$ is considered an outlier worth inspection. RMSZ is the root-mean-square of all Z scores of the bond lengths (or angles).

Mol	Chain	Bond lengths		Bond angles	
		RMSZ	# Z >5	RMSZ	# Z >5
1	A	0.36	0/2373	0.51	0/3206
1	B	0.36	0/2166	0.48	0/2923
All	All	0.36	0/4539	0.50	0/6129

There are no bond length outliers.

There are no bond angle outliers.

There are no chirality outliers.

There are no planarity outliers.

5.2 Too-close contacts

In the following table, the Non-H and H(model) columns list the number of non-hydrogen atoms and hydrogen atoms in the chain respectively. The H(added) column lists the number of hydrogen atoms added and optimized by MolProbity. The Clashes column lists the number of clashes within the asymmetric unit, whereas Symm-Clashes lists symmetry related clashes.

Mol	Chain	Non-H	H(model)	H(added)	Clashes	Symm-Clashes
1	A	2313	0	2303	9	0
1	B	2116	0	2130	18	0
2	A	27	0	26	2	0
2	B	27	0	26	3	0
3	A	47	0	0	0	0
3	B	16	0	0	0	0
All	All	4546	0	4485	31	0

The all-atom clashscore is defined as the number of clashes found per 1000 atoms (including hydrogen atoms). The all-atom clashscore for this structure is 3.

All (31) close contacts within the same asymmetric unit are listed below, sorted by their clash

magnitude.

Atom-1	Atom-2	Interatomic distance (Å)	Clash overlap (Å)
1:B:875:THR:HG22	1:B:877:SER:H	1.50	0.75
1:B:1144:HIS:HD2	1:B:1146:GLU:H	1.36	0.72
2:A:1:C92:H22	2:A:1:C92:O15	1.93	0.68
1:A:1041:VAL:HG12	1:A:1043:LYS:HE2	1.78	0.66
1:A:1026:HIS:O	1:A:1027:ARG:HG2	1.98	0.64
2:B:2:C92:O15	2:B:2:C92:H22	1.98	0.61
1:A:870:LEU:HD11	1:A:879:HIS:HA	1.86	0.58
1:A:936:VAL:O	1:A:1001:THR:HA	2.06	0.56
1:B:1144:HIS:CD2	1:B:1146:GLU:H	2.23	0.55
1:B:1114:GLU:HG2	1:B:1117:ARG:HH12	1.72	0.55
1:A:1026:HIS:C	1:A:1027:ARG:HG2	2.29	0.52
2:A:1:C92:C22	2:A:1:C92:O15	2.59	0.50
1:B:1011:GLN:HA	1:B:1014:LYS:HE3	1.93	0.49
1:A:1041:VAL:CG1	1:A:1043:LYS:HE2	2.43	0.49
1:B:1144:HIS:CD2	1:B:1149:GLN:HB3	2.48	0.49
1:A:900:ASN:HD22	1:A:900:ASN:N	2.11	0.47
1:B:820:LEU:HB2	1:B:887:LYS:HD3	1.96	0.47
1:B:875:THR:HG22	1:B:877:SER:N	2.25	0.46
1:B:1026:HIS:O	1:B:1027:ARG:HB2	2.16	0.46
1:A:1127:ALA:HB1	1:A:1131:THR:HG21	1.99	0.45
1:B:1067:LEU:N	1:B:1068:PRO:HD2	2.32	0.44
1:B:1084:ILE:HG13	1:B:1084:ILE:H	1.62	0.43
2:B:2:C92:O15	2:B:2:C92:C22	2.63	0.43
1:B:1128:PRO:HG2	1:B:1131:THR:HB	2.01	0.43
1:A:848:VAL:HG22	1:A:868:LYS:HG3	2.01	0.43
1:B:1099:PHE:CE2	1:B:1135:MET:HG2	2.53	0.42
1:B:892:ILE:HD11	1:B:1024:CYS:SG	2.59	0.42
1:B:1046:ASP:HB3	2:B:2:C92:H11A	2.02	0.42
1:B:1153:PHE:O	1:B:1157:VAL:HG23	2.21	0.41
1:B:1012:VAL:HG11	1:B:1094:LEU:CD2	2.50	0.41
1:B:1153:PHE:HA	1:B:1156:LEU:HD12	2.03	0.40

There are no symmetry-related clashes.

5.3 Torsion angles ⓘ

5.3.1 Protein backbone ⓘ

In the following table, the Percentiles column shows the percent Ramachandran outliers of the chain as a percentile score with respect to all X-ray entries followed by that with respect to entries

of similar resolution.

The Analysed column shows the number of residues for which the backbone conformation was analysed, and the total number of residues.

Mol	Chain	Analysed	Favoured	Allowed	Outliers	Percentiles	
1	A	279/314 (89%)	273 (98%)	6 (2%)	0	100	100
1	B	253/314 (81%)	242 (96%)	11 (4%)	0	100	100
All	All	532/628 (85%)	515 (97%)	17 (3%)	0	100	100

There are no Ramachandran outliers to report.

5.3.2 Protein sidechains ⓘ

In the following table, the Percentiles column shows the percent sidechain outliers of the chain as a percentile score with respect to all X-ray entries followed by that with respect to entries of similar resolution.

The Analysed column shows the number of residues for which the sidechain conformation was analysed, and the total number of residues.

Mol	Chain	Analysed	Rotameric	Outliers	Percentiles	
1	A	252/270 (93%)	246 (98%)	6 (2%)	57	85
1	B	232/270 (86%)	229 (99%)	3 (1%)	76	92
All	All	484/540 (90%)	475 (98%)	9 (2%)	65	88

All (9) residues with a non-rotameric sidechain are listed below:

Mol	Chain	Res	Type
1	A	849	ILE
1	A	861	THR
1	A	883	MET
1	A	936	VAL
1	A	996	TYR
1	A	1043	LYS
1	B	1104	SER
1	B	1149	GLN
1	B	1165	GLN

Some sidechains can be flipped to improve hydrogen bonding and reduce clashes. All (10) such sidechains are listed below:

Mol	Chain	Res	Type
1	A	900	ASN
1	A	933	ASN
1	A	1040	ASN
1	A	1162	ASN
1	A	1169	GLN
1	B	894	HIS
1	B	900	ASN
1	B	1040	ASN
1	B	1144	HIS
1	B	1162	ASN

5.3.3 RNA [i](#)

There are no RNA molecules in this entry.

5.4 Non-standard residues in protein, DNA, RNA chains [i](#)

There are no non-standard protein/DNA/RNA residues in this entry.

5.5 Carbohydrates [i](#)

There are no carbohydrates in this entry.

5.6 Ligand geometry [i](#)

2 ligands are modelled in this entry.

In the following table, the Counts columns list the number of bonds (or angles) for which Mogul statistics could be retrieved, the number of bonds (or angles) that are observed in the model and the number of bonds (or angles) that are defined in the chemical component dictionary. The Link column lists molecule types, if any, to which the group is linked. The Z score for a bond length (or angle) is the number of standard deviations the observed value is removed from the expected value. A bond length (or angle) with $|Z| > 2$ is considered an outlier worth inspection. RMSZ is the root-mean-square of all Z scores of the bond lengths (or angles).

Mol	Type	Chain	Res	Link	Bond lengths			Bond angles		
					Counts	RMSZ	$\# Z > 2$	Counts	RMSZ	$\# Z > 2$
2	C92	A	1	-	29,29,29	0.90	2 (6%)	38,39,39	1.23	2 (5%)
2	C92	B	2	-	29,29,29	0.87	1 (3%)	38,39,39	1.26	2 (5%)

In the following table, the Chirals column lists the number of chiral outliers, the number of chiral

centers analysed, the number of these observed in the model and the number defined in the chemical component dictionary. Similar counts are reported in the Torsion and Rings columns. '-' means no outliers of that kind were identified.

Mol	Type	Chain	Res	Link	Chirals	Torsions	Rings
2	C92	A	1	-	-	0/18/25/25	0/3/3/3
2	C92	B	2	-	-	0/18/25/25	0/3/3/3

All (3) bond length outliers are listed below:

Mol	Chain	Res	Type	Atoms	Z	Observed(Å)	Ideal(Å)
2	A	1	C92	C17-N16	-3.39	1.35	1.41
2	B	2	C92	C17-N16	-3.23	1.35	1.41
2	A	1	C92	C4-C8	2.03	1.54	1.50

All (4) bond angle outliers are listed below:

Mol	Chain	Res	Type	Atoms	Z	Observed(°)	Ideal(°)
2	B	2	C92	C17-C18-N19	-4.42	121.10	124.57
2	A	1	C92	C17-C18-N19	-4.39	121.13	124.57
2	A	1	C92	C7-C2-C1	3.73	123.24	120.62
2	B	2	C92	C7-C2-C1	4.01	123.44	120.62

There are no chirality outliers.

There are no torsion outliers.

There are no ring outliers.

2 monomers are involved in 5 short contacts:

Mol	Chain	Res	Type	Clashes	Symm-Clashes
2	A	1	C92	2	0
2	B	2	C92	3	0

5.7 Other polymers [i](#)

There are no such residues in this entry.

5.8 Polymer linkage issues [i](#)

There are no chain breaks in this entry.

6 Fit of model and data

6.1 Protein, DNA and RNA chains

In the following table, the column labelled ‘#RSRZ> 2’ contains the number (and percentage) of RSRZ outliers, followed by percent RSRZ outliers for the chain as percentile scores relative to all X-ray entries and entries of similar resolution. The OWAB column contains the minimum, median, 95th percentile and maximum values of the occupancy-weighted average B-factor per residue. The column labelled ‘Q< 0.9’ lists the number of (and percentage) of residues with an average occupancy less than 0.9.

Mol	Chain	Analysed	<RSRZ>	#RSRZ>2	OWAB(Å ²)	Q<0.9
1	A	285/314 (90%)	0.04	12 (4%) 40 39	13, 22, 45, 58	0
1	B	263/314 (83%)	0.36	9 (3%) 49 49	18, 39, 56, 64	0
All	All	548/628 (87%)	0.19	21 (3%) 44 44	13, 29, 54, 64	0

All (21) RSRZ outliers are listed below:

Mol	Chain	Res	Type	RSRZ
1	A	859	THR	7.1
1	A	873	GLY	4.1
1	A	877	SER	4.0
1	A	858	LYS	3.9
1	A	819	ARG	3.7
1	A	880	ARG	3.5
1	A	874	ALA	3.5
1	B	1080	ARG	3.4
1	A	1176	HIS	2.9
1	B	825	SER	2.8
1	A	876	HIS	2.7
1	B	1079	ASP	2.5
1	A	875	THR	2.4
1	B	909	GLY	2.3
1	B	1110	LYS	2.3
1	B	1112	ASP	2.3
1	B	832	ASP	2.2
1	A	860	ALA	2.2
1	B	999	PHE	2.2
1	B	1078	PHE	2.1
1	A	878	GLU	2.1

6.2 Non-standard residues in protein, DNA, RNA chains [i](#)

There are no non-standard protein/DNA/RNA residues in this entry.

6.3 Carbohydrates [i](#)

There are no carbohydrates in this entry.

6.4 Ligands [i](#)

In the following table, the Atoms column lists the number of modelled atoms in the group and the number defined in the chemical component dictionary. LLDF column lists the quality of electron density of the group with respect to its neighbouring residues in protein, DNA or RNA chains. The B-factors column lists the minimum, median, 95th percentile and maximum values of B factors of atoms in the group. The column labelled 'Q< 0.9' lists the number of atoms with occupancy less than 0.9.

Mol	Type	Chain	Res	Atoms	RSCC	RSR	LLDF	B-factors(\AA^2)	Q<0.9
2	C92	A	1	27/27	0.95	0.17	1.04	24,25,28,28	0
2	C92	B	2	27/27	0.92	0.17	-0.29	30,31,34,34	0

6.5 Other polymers [i](#)

There are no such residues in this entry.