



Full wwPDB X-ray Structure Validation Report ⓘ

Feb 1, 2016 – 03:35 PM GMT

PDB ID : 4CPM
Title : Structure of the Neuraminidase from the B/Brisbane/60/2008 virus in complex with Oseltamivir
Authors : Vachieri, S.G.; Collins, P.J.; Escuret, V.; Casalegno, J.S.; Cattle, N.; Ferraris, O.; Sabatier, M.; Frobert, E.; Caro, V.; Skehel, J.J.; Gamblin, S.J.; Valla, F.; Valette, M.; Ottmann, M.; McCauley, J.W.; Daniels, R.S.; Lina, B.
Deposited on : 2014-02-07
Resolution : 2.75 Å(reported)

This is a Full wwPDB X-ray Structure Validation Report for a publicly released PDB entry.
We welcome your comments at validation@mail.wwpdb.org
A user guide is available at
<http://wwpdb.org/validation/2016/XrayValidationReportHelp>
with specific help available everywhere you see the ⓘ symbol.

The following versions of software and data (see [references ⓘ](#)) were used in the production of this report:

MolProbity : 4.02b-467
Mogul : 1.7 (RC4), CSD as536be (2015)
Xtriage (Phenix) : 1.9-1692
EDS : rb-20026688
Percentile statistics : 20151230.v01 (using entries in the PDB archive December 30th 2015)
Refmac : 5.8.0135
CCP4 : 6.5.0
Ideal geometry (proteins) : Engh & Huber (2001)
Ideal geometry (DNA, RNA) : Parkinson et al. (1996)
Validation Pipeline (wwPDB-VP) : trunk26865

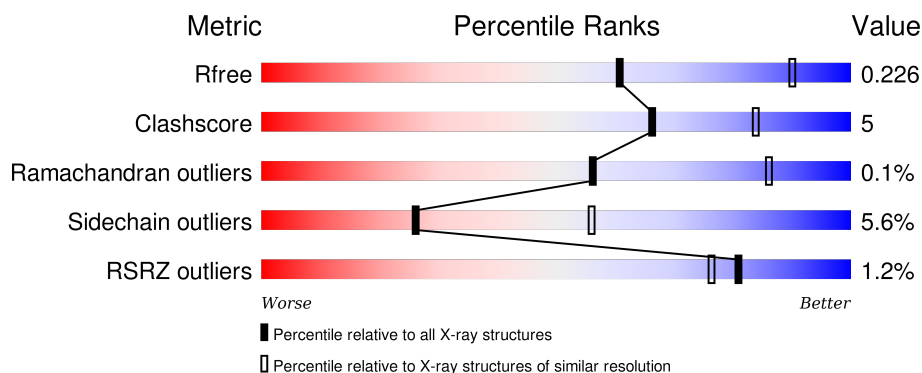
1 Overall quality at a glance ⓘ

The following experimental techniques were used to determine the structure:

X-RAY DIFFRACTION

The reported resolution of this entry is 2.75 Å.

Percentile scores (ranging between 0-100) for global validation metrics of the entry are shown in the following graphic. The table shows the number of entries on which the scores are based.



Metric	Whole archive (#Entries)	Similar resolution (#Entries, resolution range(Å))
R_{free}	91344	3340 (2.80-2.72)
Clashscore	102246	3829 (2.80-2.72)
Ramachandran outliers	100387	3767 (2.80-2.72)
Sidechain outliers	100360	3770 (2.80-2.72)
RSRZ outliers	91569	3352 (2.80-2.72)

The table below summarises the geometric issues observed across the polymeric chains and their fit to the electron density. The red, orange, yellow and green segments on the lower bar indicate the fraction of residues that contain outliers for ≥ 3 , 2, 1 and 0 types of geometric quality criteria. A grey segment represents the fraction of residues that are not modelled. The numeric value for each fraction is indicated below the corresponding segment, with a dot representing fractions $\leq 5\%$. The upper red bar (where present) indicates the fraction of residues that have poor fit to the electron density. The numeric value is given above the bar.

Mol	Chain	Length	Quality of chain
1	A	466	<div> <div></div> <div>71%13%16%</div> </div>
1	B	466	<div> <div></div> <div>71%11%16%</div> </div>

The following table lists non-polymeric compounds, carbohydrate monomers and non-standard residues in protein, DNA, RNA chains that are outliers for geometric or electron-density-fit criteria:

Mol	Type	Chain	Res	Chirality	Geometry	Clashes	Electron density
4	NAG	B	611	X	-	-	-
6	EDO	A	1466	-	-	-	X
6	EDO	A	1468	-	-	-	X
6	EDO	A	1469	-	-	-	X
6	EDO	B	1466	-	-	-	X
6	EDO	B	1467	-	-	-	X
6	EDO	B	1468	-	-	-	X
7	NAG	B	601	X	-	-	-

2 Entry composition

There are 8 unique types of molecules in this entry. The entry contains 6342 atoms, of which 0 are hydrogens and 0 are deuteriums.

In the tables below, the ZeroOcc column contains the number of atoms modelled with zero occupancy, the AltConf column contains the number of residues with at least one atom in alternate conformation and the Trace column contains the number of residues modelled with at most 2 atoms.

- Molecule 1 is a protein called NEURAMINIDASE.

Mol	Chain	Residues	Atoms					ZeroOcc	AltConf	Trace
1	A	390	Total	C	N	O	S	0	0	0
			3017	1892	523	573	29			
1	B	390	Total	C	N	O	S	0	0	0
			3017	1892	523	573	29			

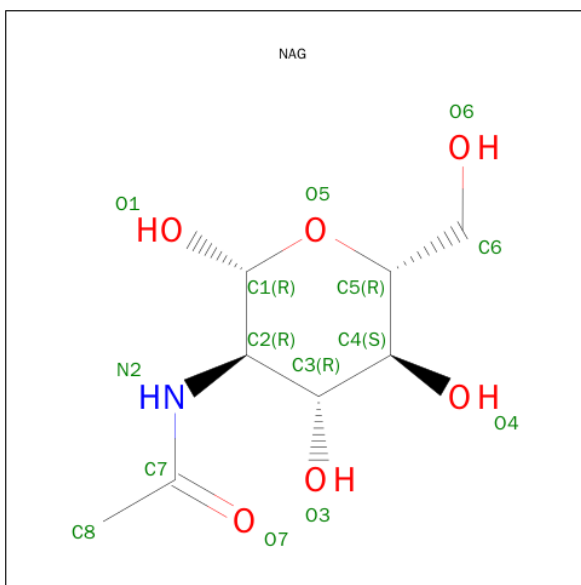
- Molecule 2 is CALCIUM ION (three-letter code: CA) (formula: Ca).

Mol	Chain	Residues	Atoms		ZeroOcc	AltConf
2	B	1	Total	Ca	0	0
			1	1		
2	A	1	Total	Ca	0	0
			1	1		

- Molecule 3 is a polymer of unknown type called SUGAR (5-MER).

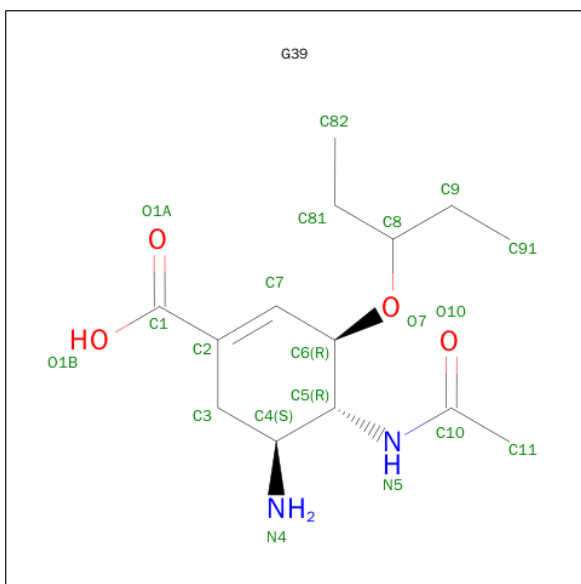
Mol	Chain	Residues	Atoms				ZeroOcc	AltConf
3	A	5	Total	C	N	O	0	0
			61	34	2	25		

- Molecule 4 is SUGAR (N-ACETYL-D-GLUCOSAMINE) (three-letter code: NAG) (formula: C₈H₁₅NO₆).



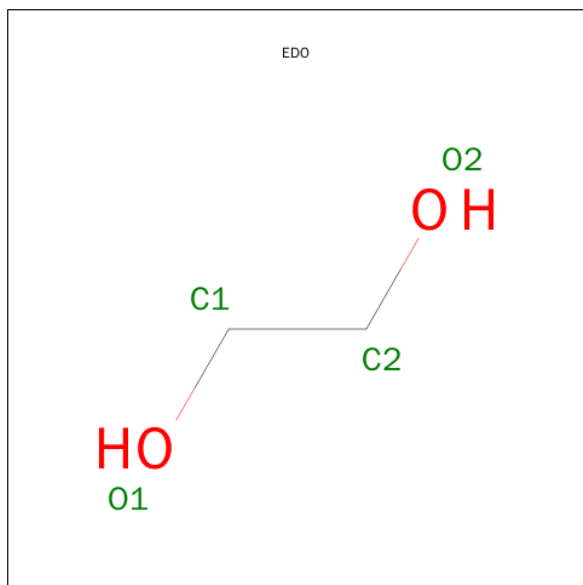
Mol	Chain	Residues	Atoms				ZeroOcc	AltConf
4	A	1	Total	C	N	O	0	0
			14	8	1	5		
4	A	1	Total	C	N	O	0	0
			14	8	1	5		
4	B	1	Total	C	N	O	0	0
			14	8	1	5		

- Molecule 5 is (3R,4R,5S)-4-(ACETYLAMINO)-5-AMINO-3-(PENTAN-3-YLOXY)CYCLOHEX-1-ENE-1-CARBOXYLIC ACID (three-letter code: G39) (formula: C₁₄H₂₄N₂O₄).



Mol	Chain	Residues	Atoms				ZeroOcc	AltConf
5	A	1	Total	C	N	O	0	0
			20	14	2	4		
5	B	1	Total	C	N	O	0	0
			20	14	2	4		

- Molecule 6 is 1,2-ETHANEDIOL (three-letter code: EDO) (formula: $C_2H_6O_2$).



Mol	Chain	Residues	Atoms			ZeroOcc	AltConf
6	A	1	Total	C	O	0	0
			4	2	2		
6	A	1	Total	C	O	0	0
			4	2	2		
6	A	1	Total	C	O	0	0
			4	2	2		
6	A	1	Total	C	O	0	0
			4	2	2		
6	B	1	Total	C	O	0	0
			4	2	2		
6	B	1	Total	C	O	0	0
			4	2	2		
6	B	1	Total	C	O	0	0
			4	2	2		

- Molecule 7 is a polymer of unknown type called SUGAR (3-MER).

Mol	Chain	Residues	Atoms				ZeroOcc	AltConf
7	B	3	Total	C	N	O	0	0
			39	22	2	15		

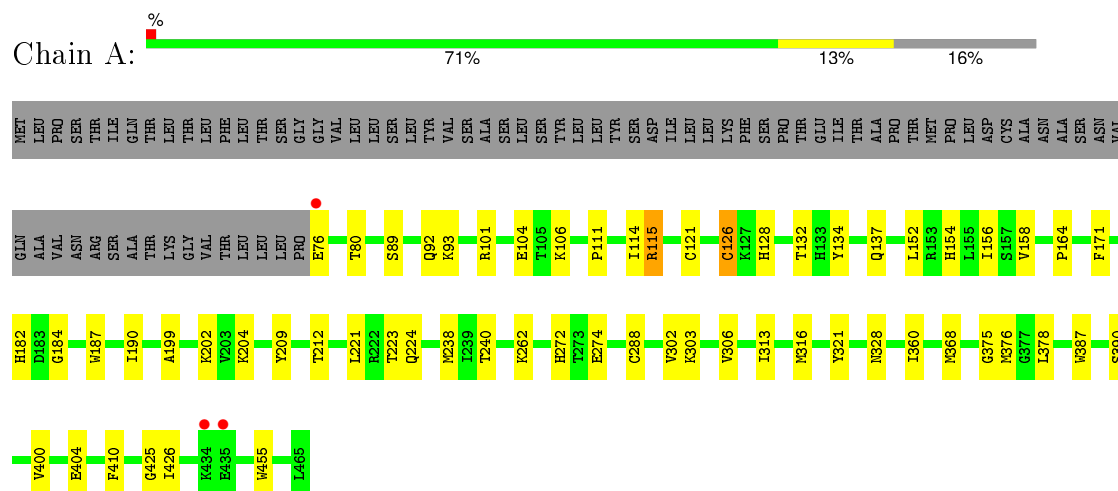
- Molecule 8 is water.

Mol	Chain	Residues	Atoms		ZeroOcc	AltConf
8	A	51	Total	O	0	0
			51	51		
8	B	41	Total	O	0	0
			41	41		

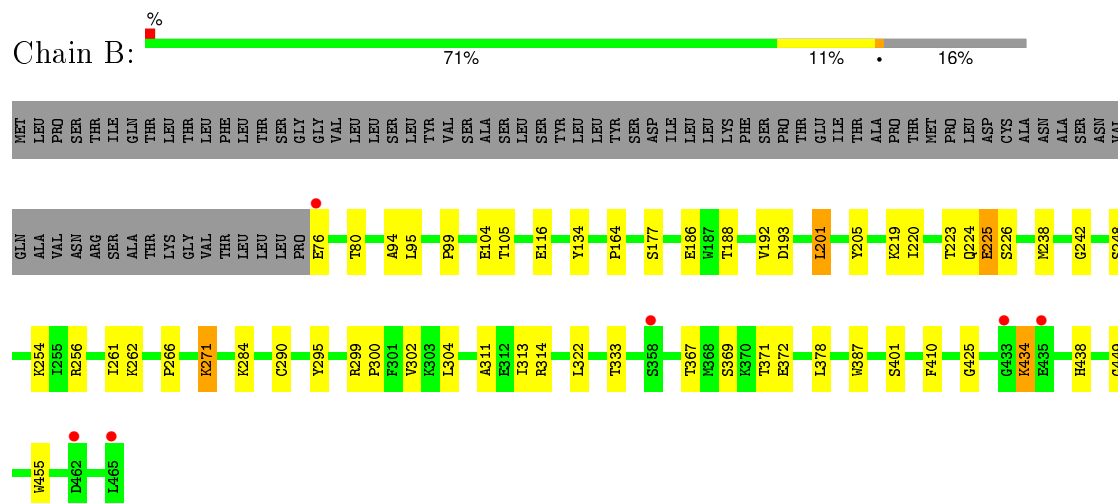
3 Residue-property plots

These plots are drawn for all protein, RNA and DNA chains in the entry. The first graphic for a chain summarises the proportions of errors displayed in the second graphic. The second graphic shows the sequence view annotated by issues in geometry and electron density. Residues are color-coded according to the number of geometric quality criteria for which they contain at least one outlier: green = 0, yellow = 1, orange = 2 and red = 3 or more. A red dot above a residue indicates a poor fit to the electron density ($RSRZ > 2$). Stretches of 2 or more consecutive residues without any outlier are shown as a green connector. Residues present in the sample, but not in the model, are shown in grey.

• Molecule 1: NEURAMINIDASE



• Molecule 1: NEURAMINIDASE



4 Data and refinement statistics

Property	Value	Source
Space group	P 32 2 1	Depositor
Cell constants a, b, c, α , β , γ	159.50 Å 159.50 Å 90.35 Å 90.00° 90.00° 120.00°	Depositor
Resolution (Å)	45.20 – 2.75 45.20 – 2.75	Depositor EDS
% Data completeness (in resolution range)	92.3 (45.20-2.75) 92.3 (45.20-2.75)	Depositor EDS
R_{merge}	0.10	Depositor
R_{sym}	(Not available)	Depositor
$\langle I/\sigma(I) \rangle$ ¹	1.88 (at 2.77 Å)	Xtriage
Refinement program	PHENIX (PHENIX.REFINE)	Depositor
R, R_{free}	0.159 , 0.217 0.174 , 0.226	Depositor DCC
R_{free} test set	1614 reflections (5.31%)	DCC
Wilson B-factor (Å ²)	52.0	Xtriage
Anisotropy	0.552	Xtriage
Bulk solvent k_{sol} (e/Å ³), B_{sol} (Å ²)	0.33 , 39.5	EDS
Estimated twinning fraction	0.025 for -h,-k,l	Xtriage
L-test for twinning ²	$\langle L \rangle = 0.49$, $\langle L^2 \rangle = 0.32$	Xtriage
Outliers	1 of 32023 reflections (0.003%)	Xtriage
F_o, F_c correlation	0.95	EDS
Total number of atoms	6342	wwPDB-VP
Average B, all atoms (Å ²)	46.0	wwPDB-VP

Xtriage's analysis on translational NCS is as follows: *The largest off-origin peak in the Patterson function is 3.47% of the height of the origin peak. No significant pseudotranslation is detected.*

¹Intensities estimated from amplitudes.

²Theoretical values of $\langle |L| \rangle$, $\langle L^2 \rangle$ for acentric reflections are 0.5, 0.375 respectively for untwinned datasets, and 0.333, 0.2 for perfectly twinned datasets.

5 Model quality

5.1 Standard geometry

Bond lengths and bond angles in the following residue types are not validated in this section: BMA, NAG, G39, CA, EDO, MAN

The Z score for a bond length (or angle) is the number of standard deviations the observed value is removed from the expected value. A bond length (or angle) with $|Z| > 5$ is considered an outlier worth inspection. RMSZ is the root-mean-square of all Z scores of the bond lengths (or angles).

Mol	Chain	Bond lengths		Bond angles	
		RMSZ	# $ Z > 5$	RMSZ	# $ Z > 5$
1	A	0.41	0/3091	0.60	0/4175
1	B	0.40	0/3091	0.60	1/4175 (0.0%)
All	All	0.40	0/6182	0.60	1/8350 (0.0%)

Chiral center outliers are detected by calculating the chiral volume of a chiral center and verifying if the center is modelled as a planar moiety or with the opposite hand. A planarity outlier is detected by checking planarity of atoms in a peptide group, atoms in a mainchain group or atoms of a sidechain that are expected to be planar.

Mol	Chain	#Chirality outliers	#Planarity outliers
7	B	1	0

There are no bond length outliers.

All (1) bond angle outliers are listed below:

Mol	Chain	Res	Type	Atoms	Z	Observed($^{\circ}$)	Ideal($^{\circ}$)
1	B	201	LEU	CA-CB-CG	6.39	129.99	115.30

All (1) chirality outliers are listed below:

Mol	Chain	Res	Type	Atom
7	B	601	NAG	C1

There are no planarity outliers.

5.2 Too-close contacts

In the following table, the Non-H and H(model) columns list the number of non-hydrogen atoms and hydrogen atoms in the chain respectively. The H(added) column lists the number of hydrogen

atoms added and optimized by MolProbity. The Clashes column lists the number of clashes within the asymmetric unit, whereas Symm-Clashes lists symmetry related clashes.

Mol	Chain	Non-H	H(model)	H(added)	Clashes	Symm-Clashes
1	A	3017	0	2902	33	0
1	B	3017	0	2902	27	1
2	A	1	0	0	0	0
2	B	1	0	0	0	0
3	A	61	0	52	2	0
4	A	28	0	26	2	0
4	B	14	0	13	0	0
5	A	20	0	23	1	0
5	B	20	0	23	0	0
6	A	20	0	30	5	1
6	B	12	0	18	3	0
7	B	39	0	34	0	0
8	A	51	0	0	1	0
8	B	41	0	0	0	0
All	All	6342	0	6023	60	1

The all-atom clashscore is defined as the number of clashes found per 1000 atoms (including hydrogen atoms). The all-atom clashscore for this structure is 5.

All (60) close contacts within the same asymmetric unit are listed below, sorted by their clash magnitude.

Atom-1	Atom-2	Interatomic distance (Å)	Clash overlap (Å)
1:A:328:ASN:ND2	8:A:2038:HOH:O	2.22	0.72
1:A:199:ALA:HB3	1:A:221:LEU:HB3	1.71	0.71
1:A:92:GLN:HB3	6:A:1469:EDO:H22	1.71	0.71
1:B:434:LYS:HE2	1:B:434:LYS:H	1.59	0.68
1:A:376:MET:HG2	1:A:426:ILE:HG12	1.81	0.61
1:B:290:CYS:HB2	1:B:300:PRO:HG2	1.81	0.61
1:B:256:ARG:HA	6:B:1466:EDO:H12	1.83	0.59
1:A:204:LYS:HD2	1:A:209:TYR:CE2	2.38	0.59
1:A:272:HIS:NE2	1:A:274:GLU:OE2	2.37	0.58
1:B:438:HIS:NE2	6:B:1468:EDO:O1	2.33	0.58
1:A:101:ARG:O	6:A:1466:EDO:O1	2.20	0.57
1:B:186:GLU:HB3	1:B:205:TYR:CZ	2.41	0.56
3:A:604:MAN:H2	4:A:605:NAG:H61	1.87	0.56
1:B:367:THR:HG21	1:B:372:GLU:O	2.07	0.53
1:A:209:TYR:CZ	1:B:94:ALA:HB1	2.44	0.52
1:A:321:TYR:HA	6:A:1468:EDO:H11	1.91	0.52
1:A:93:LYS:HB3	6:A:1469:EDO:H21	1.91	0.52

Continued on next page...

Continued from previous page...

Atom-1	Atom-2	Interatomic distance (Å)	Clash overlap (Å)
1:A:121:CYS:HA	1:A:126:CYS:HA	1.93	0.51
1:A:303:LYS:HD2	1:A:387:TRP:CH2	2.46	0.50
1:A:288:CYS:HB2	1:A:302:VAL:HB	1.94	0.49
1:A:223:THR:OG1	1:A:224:GLN:N	2.46	0.49
1:B:410:PHE:CZ	1:B:425:GLY:HA3	2.48	0.49
1:B:219:LYS:HB2	1:B:242:GLY:HA2	1.95	0.48
1:A:182:HIS:HD2	1:A:187:TRP:CE2	2.31	0.48
5:A:700:G39:H913	5:A:700:G39:H7	1.95	0.48
1:A:400:VAL:HG13	1:A:404:GLU:HB2	1.96	0.48
1:A:111:PRO:HD2	1:A:137:GLN:O	2.13	0.47
1:A:115:ARG:HG2	1:A:115:ARG:HH11	1.79	0.47
1:A:202:LYS:HB2	1:A:202:LYS:HE3	1.66	0.47
1:B:434:LYS:CE	1:B:434:LYS:H	2.27	0.47
1:A:410:PHE:CZ	1:A:425:GLY:HA3	2.50	0.46
1:A:240:THR:HG21	1:A:274:GLU:CB	2.46	0.46
1:A:80:THR:HG23	1:A:184:GLY:HA3	1.97	0.46
1:B:314:ARG:HB2	1:B:387:TRP:CD1	2.51	0.46
1:A:156:ILE:HG22	1:A:171:PHE:HA	1.99	0.45
1:B:271:LYS:HD2	1:B:295:TYR:CE2	2.51	0.45
1:B:299:ARG:HG3	1:B:322:LEU:HB2	1.98	0.45
1:A:115:ARG:HG2	1:A:115:ARG:NH1	2.32	0.45
1:B:177:SER:HB3	1:B:192:VAL:HB	1.98	0.45
1:B:224:GLN:O	1:B:225:GLU:HB2	2.17	0.45
1:B:116:GLU:HB3	1:B:225:GLU:HG3	1.99	0.45
1:B:188:THR:OG1	6:B:1466:EDO:H21	2.16	0.44
1:B:99:PRO:HG3	1:B:164:PRO:HD2	2.00	0.44
1:B:367:THR:HG22	1:B:369:SER:N	2.32	0.44
1:A:158:VAL:HG11	1:A:164:PRO:HA	2.00	0.43
1:B:302:VAL:HG13	1:B:313:ILE:HG12	2.00	0.43
1:B:266:PRO:HA	1:B:311:ALA:O	2.18	0.43
1:A:212:THR:OG1	1:B:449:GLY:HA3	2.18	0.42
1:A:114:ILE:HG22	1:A:132:THR:HA	2.01	0.42
1:B:314:ARG:HB2	1:B:387:TRP:CG	2.54	0.42
1:A:152:LEU:HD23	1:A:152:LEU:HA	1.82	0.42
1:A:262:LYS:HB2	1:A:262:LYS:HE2	1.88	0.41
1:B:223:THR:OG1	1:B:224:GLN:N	2.52	0.41
1:A:154:HIS:CD2	1:B:95:LEU:HD12	2.56	0.41
1:B:254:LYS:HE2	1:B:261:ILE:HD11	2.02	0.41
1:B:254:LYS:HB3	1:B:262:LYS:HB3	2.02	0.41
3:A:604:MAN:C2	4:A:605:NAG:H61	2.49	0.41
1:A:375:GLY:HA2	1:A:400:VAL:HG12	2.02	0.40

Continued on next page...

Continued from previous page...

Atom-1	Atom-2	Interatomic distance (Å)	Clash overlap (Å)
1:A:316:MET:HB2	6:A:1468:EDO:H21	2.03	0.40
1:A:240:THR:HG21	1:A:274:GLU:HB3	2.03	0.40

All (1) symmetry-related close contacts are listed below. The label for Atom-2 includes the symmetry operator and encoded unit-cell translations to be applied.

Atom-1	Atom-2	Interatomic distance (Å)	Clash overlap (Å)
1:B:193:ASP:OD1	6:A:1469:EDO:O2[6_555]	2.18	0.02

5.3 Torsion angles [i](#)

5.3.1 Protein backbone [i](#)

In the following table, the Percentiles column shows the percent Ramachandran outliers of the chain as a percentile score with respect to all X-ray entries followed by that with respect to entries of similar resolution.

The Analysed column shows the number of residues for which the backbone conformation was analysed, and the total number of residues.

Mol	Chain	Analysed	Favoured	Allowed	Outliers	Percentiles	
1	A	388/466 (83%)	365 (94%)	23 (6%)	0	100	100
1	B	388/466 (83%)	372 (96%)	15 (4%)	1 (0%)	46	77
All	All	776/932 (83%)	737 (95%)	38 (5%)	1 (0%)	56	86

All (1) Ramachandran outliers are listed below:

Mol	Chain	Res	Type
1	B	220	ILE

5.3.2 Protein sidechains [i](#)

In the following table, the Percentiles column shows the percent sidechain outliers of the chain as a percentile score with respect to all X-ray entries followed by that with respect to entries of similar resolution.

The Analysed column shows the number of residues for which the sidechain conformation was analysed, and the total number of residues.

Mol	Chain	Analysed	Rotameric	Outliers	Percentiles	
1	A	323/390 (83%)	306 (95%)	17 (5%)	28	58
1	B	323/390 (83%)	304 (94%)	19 (6%)	24	53
All	All	646/780 (83%)	610 (94%)	36 (6%)	26	56

All (36) residues with a non-rotameric sidechain are listed below:

Mol	Chain	Res	Type
1	A	76	GLU
1	A	89	SER
1	A	104	GLU
1	A	106	LYS
1	A	115	ARG
1	A	126	CYS
1	A	128	HIS
1	A	134	TYR
1	A	190	ILE
1	A	238	MET
1	A	306	VAL
1	A	313	ILE
1	A	360	ILE
1	A	368	MET
1	A	378	LEU
1	A	390	SER
1	A	455	TRP
1	B	76	GLU
1	B	80	THR
1	B	104	GLU
1	B	105	THR
1	B	134	TYR
1	B	201	LEU
1	B	225	GLU
1	B	226	SER
1	B	238	MET
1	B	248	SER
1	B	271	LYS
1	B	284	LYS
1	B	304	LEU
1	B	333	THR
1	B	371	THR
1	B	378	LEU
1	B	401	SER
1	B	434	LYS

Continued on next page...

Continued from previous page...

Mol	Chain	Res	Type
1	B	455	TRP

Some sidechains can be flipped to improve hydrogen bonding and reduce clashes. All (1) such sidechains are listed below:

Mol	Chain	Res	Type
1	A	328	ASN

5.3.3 RNA ⓘ

There are no RNA molecules in this entry.

5.4 Non-standard residues in protein, DNA, RNA chains ⓘ

There are no non-standard protein/DNA/RNA residues in this entry.

5.5 Carbohydrates ⓘ

8 carbohydrates are modelled in this entry.

In the following table, the Counts columns list the number of bonds (or angles) for which Mogul statistics could be retrieved, the number of bonds (or angles) that are observed in the model and the number of bonds (or angles) that are defined in the chemical component dictionary. The Link column lists molecule types, if any, to which the group is linked. The Z score for a bond length (or angle) is the number of standard deviations the observed value is removed from the expected value. A bond length (or angle) with $|Z| > 2$ is considered an outlier worth inspection. RMSZ is the root-mean-square of all Z scores of the bond lengths (or angles).

Mol	Type	Chain	Res	Link	Bond lengths			Bond angles		
					Counts	RMSZ	# Z > 2	Counts	RMSZ	# Z > 2
3	NAG	A	601	1,3	14,14,15	0.25	0	15,19,21	0.55	0
3	NAG	A	602	3	14,14,15	0.20	0	15,19,21	0.41	0
3	BMA	A	603	3	11,11,12	0.71	0	14,15,17	1.55	3 (21%)
3	MAN	A	604	3	11,11,12	1.27	2 (18%)	14,15,17	1.79	2 (14%)
3	MAN	A	607	3	11,11,12	1.84	3 (27%)	14,15,17	1.64	2 (14%)
7	NAG	B	601	1,7	14,14,15	0.49	0	15,19,21	0.40	0
7	NAG	B	602	7	14,14,15	0.46	0	15,19,21	0.77	1 (6%)
7	BMA	B	603	7	11,11,12	1.04	2 (18%)	14,15,17	1.06	2 (14%)

In the following table, the Chirals column lists the number of chiral outliers, the number of chiral

centers analysed, the number of these observed in the model and the number defined in the chemical component dictionary. Similar counts are reported in the Torsion and Rings columns. '-' means no outliers of that kind were identified.

Mol	Type	Chain	Res	Link	Chirals	Torsions	Rings
3	NAG	A	601	1,3	-	0/6/23/26	0/1/1/1
3	NAG	A	602	3	-	0/6/23/26	0/1/1/1
3	BMA	A	603	3	-	0/2/19/22	0/1/1/1
3	MAN	A	604	3	-	0/2/19/22	0/1/1/1
3	MAN	A	607	3	-	0/2/19/22	0/1/1/1
7	NAG	B	601	1,7	1/1/5/7	0/6/23/26	0/1/1/1
7	NAG	B	602	7	-	0/6/23/26	0/1/1/1
7	BMA	B	603	7	-	0/2/19/22	0/1/1/1

All (7) bond length outliers are listed below:

Mol	Chain	Res	Type	Atoms	Z	Observed(Å)	Ideal(Å)
3	A	607	MAN	C4-C5	2.06	1.57	1.53
7	B	603	BMA	C1-C2	2.11	1.57	1.52
3	A	604	MAN	O5-C5	2.16	1.48	1.43
7	B	603	BMA	C4-C3	2.30	1.58	1.52
3	A	604	MAN	C4-C5	2.32	1.58	1.53
3	A	607	MAN	C1-C2	2.70	1.58	1.52
3	A	607	MAN	C2-C3	3.97	1.58	1.52

All (10) bond angle outliers are listed below:

Mol	Chain	Res	Type	Atoms	Z	Observed(°)	Ideal(°)
7	B	603	BMA	O2-C2-C3	-2.05	105.99	110.12
3	A	603	BMA	O2-C2-C3	-2.03	106.04	110.12
3	A	604	MAN	O5-C1-C2	2.05	114.19	110.86
7	B	602	NAG	C1-O5-C5	2.32	115.19	112.25
3	A	603	BMA	C2-C3-C4	2.43	115.16	111.04
7	B	603	BMA	O2-C2-C1	2.47	114.15	109.21
3	A	607	MAN	O2-C2-C1	2.73	114.68	109.21
3	A	603	BMA	C1-C2-C3	4.12	114.42	109.54
3	A	607	MAN	C1-O5-C5	4.21	117.59	112.25
3	A	604	MAN	C1-O5-C5	4.78	118.32	112.25

All (1) chirality outliers are listed below:

Mol	Chain	Res	Type	Atom
7	B	601	NAG	C1

There are no torsion outliers.

There are no ring outliers.

1 monomer is involved in 2 short contacts:

Mol	Chain	Res	Type	Clashes	Symm-Clashes
3	A	604	MAN	2	0

5.6 Ligand geometry [i](#)

Of 15 ligands modelled in this entry, 2 are monoatomic - leaving 13 for Mogul analysis.

In the following table, the Counts columns list the number of bonds (or angles) for which Mogul statistics could be retrieved, the number of bonds (or angles) that are observed in the model and the number of bonds (or angles) that are defined in the chemical component dictionary. The Link column lists molecule types, if any, to which the group is linked. The Z score for a bond length (or angle) is the number of standard deviations the observed value is removed from the expected value. A bond length (or angle) with $|Z| > 2$ is considered an outlier worth inspection. RMSZ is the root-mean-square of all Z scores of the bond lengths (or angles).

Mol	Type	Chain	Res	Link	Bond lengths			Bond angles		
					Counts	RMSZ	$\# Z > 2$	Counts	RMSZ	$\# Z > 2$
6	EDO	A	1466	-	3,3,3	0.48	0	2,2,2	0.33	0
6	EDO	A	1467	-	3,3,3	0.48	0	2,2,2	0.62	0
6	EDO	A	1468	-	3,3,3	0.48	0	2,2,2	0.23	0
6	EDO	A	1469	-	3,3,3	0.50	0	2,2,2	0.31	0
6	EDO	A	1470	-	3,3,3	0.56	0	2,2,2	0.31	0
4	NAG	A	605	-	14,14,15	0.57	0	15,19,21	0.82	1 (6%)
4	NAG	A	611	1	14,14,15	0.75	1 (7%)	15,19,21	0.58	1 (6%)
5	G39	A	700	-	16,20,20	2.73	2 (12%)	12,27,27	3.01	3 (25%)
6	EDO	B	1466	-	3,3,3	0.61	0	2,2,2	0.27	0
6	EDO	B	1467	-	3,3,3	0.44	0	2,2,2	0.38	0
6	EDO	B	1468	-	3,3,3	0.43	0	2,2,2	0.67	0
4	NAG	B	611	1	14,14,15	1.98	2 (14%)	15,19,21	1.37	2 (13%)
5	G39	B	700	-	16,20,20	2.95	2 (12%)	12,27,27	1.85	2 (16%)

In the following table, the Chirals column lists the number of chiral outliers, the number of chiral centers analysed, the number of these observed in the model and the number defined in the chemical component dictionary. Similar counts are reported in the Torsion and Rings columns. '-' means no outliers of that kind were identified.

Mol	Type	Chain	Res	Link	Chirals	Torsions	Rings
6	EDO	A	1466	-	-	0/1/1/1	0/0/0/0
6	EDO	A	1467	-	-	0/1/1/1	0/0/0/0

Continued on next page...

Continued from previous page...

Mol	Type	Chain	Res	Link	Chirals	Torsions	Rings
6	EDO	A	1468	-	-	0/1/1/1	0/0/0/0
6	EDO	A	1469	-	-	0/1/1/1	0/0/0/0
6	EDO	A	1470	-	-	0/1/1/1	0/0/0/0
4	NAG	A	605	-	-	0/6/23/26	0/1/1/1
4	NAG	A	611	1	-	0/6/23/26	0/1/1/1
5	G39	A	700	-	-	0/12/32/32	0/1/1/1
6	EDO	B	1466	-	-	0/1/1/1	0/0/0/0
6	EDO	B	1467	-	-	0/1/1/1	0/0/0/0
6	EDO	B	1468	-	-	0/1/1/1	0/0/0/0
4	NAG	B	611	1	1/1/5/7	0/6/23/26	0/1/1/1
5	G39	B	700	-	-	0/12/32/32	0/1/1/1

All (7) bond length outliers are listed below:

Mol	Chain	Res	Type	Atoms	Z	Observed(Å)	Ideal(Å)
4	B	611	NAG	O5-C1	-6.28	1.33	1.43
4	A	611	NAG	C1-C2	2.01	1.55	1.52
4	B	611	NAG	C1-C2	3.15	1.56	1.52
5	B	700	G39	C10-N5	3.42	1.47	1.34
5	A	700	G39	C10-N5	3.49	1.47	1.34
5	A	700	G39	C7-C2	9.91	1.50	1.34
5	B	700	G39	C7-C2	10.85	1.51	1.34

All (9) bond angle outliers are listed below:

Mol	Chain	Res	Type	Atoms	Z	Observed(°)	Ideal(°)
5	A	700	G39	C6-C7-C2	-8.65	108.75	122.39
5	A	700	G39	C3-C2-C7	-4.15	112.14	121.27
4	B	611	NAG	C1-O5-C5	-3.67	107.59	112.25
5	A	700	G39	C4-C3-C2	-3.26	105.51	109.65
5	B	700	G39	C6-C7-C2	-2.86	117.88	122.39
4	A	611	NAG	C1-O5-C5	2.00	114.79	112.25
4	A	605	NAG	C1-O5-C5	2.92	115.95	112.25
4	B	611	NAG	C4-C3-C2	3.43	116.57	111.23
5	B	700	G39	C4-C3-C2	4.76	115.70	109.65

All (1) chirality outliers are listed below:

Mol	Chain	Res	Type	Atom
4	B	611	NAG	C1

There are no torsion outliers.

There are no ring outliers.

7 monomers are involved in 12 short contacts:

Mol	Chain	Res	Type	Clashes	Symm-Clashes
6	A	1466	EDO	1	0
6	A	1468	EDO	2	0
6	A	1469	EDO	2	1
4	A	605	NAG	2	0
5	A	700	G39	1	0
6	B	1466	EDO	2	0
6	B	1468	EDO	1	0

5.7 Other polymers [i](#)

There are no such residues in this entry.

5.8 Polymer linkage issues [i](#)

There are no chain breaks in this entry.

6 Fit of model and data [i](#)

6.1 Protein, DNA and RNA chains [i](#)

In the following table, the column labelled ‘#RSRZ> 2’ contains the number (and percentage) of RSRZ outliers, followed by percent RSRZ outliers for the chain as percentile scores relative to all X-ray entries and entries of similar resolution. The OWAB column contains the minimum, median, 95th percentile and maximum values of the occupancy-weighted average B-factor per residue. The column labelled ‘Q< 0.9’ lists the number of (and percentage) of residues with an average occupancy less than 0.9.

Mol	Chain	Analysed	<RSRZ>	#RSRZ>2	OWAB(Å ²)	Q<0.9
1	A	390/466 (83%)	-0.22	3 (0%) 87 83	29, 44, 63, 111	0
1	B	390/466 (83%)	-0.21	6 (1%) 76 72	32, 43, 60, 101	0
All	All	780/932 (83%)	-0.21	9 (1%) 81 76	29, 44, 61, 111	0

All (9) RSRZ outliers are listed below:

Mol	Chain	Res	Type	RSRZ
1	A	76	GLU	5.5
1	B	435	GLU	3.2
1	B	76	GLU	3.1
1	A	435	GLU	3.0
1	A	434	LYS	2.7
1	B	433	GLY	2.2
1	B	465	LEU	2.2
1	B	358	SER	2.1
1	B	462	ASP	2.0

6.2 Non-standard residues in protein, DNA, RNA chains [i](#)

There are no non-standard protein/DNA/RNA residues in this entry.

6.3 Carbohydrates [i](#)

In the following table, the Atoms column lists the number of modelled atoms in the group and the number defined in the chemical component dictionary. LLDF column lists the quality of electron density of the group with respect to its neighbouring residues in protein, DNA or RNA chains. The B-factors column lists the minimum, median, 95th percentile and maximum values of B factors of atoms in the group. The column labelled ‘Q< 0.9’ lists the number of atoms with occupancy less than 0.9.

Mol	Type	Chain	Res	Atoms	RSCC	RSR	LLDF	B-factors(\AA^2)	Q<0.9
7	NAG	B	601	14/15	0.87	0.25	1.61	50,57,71,77	0
7	BMA	B	603	11/12	0.76	0.38	-	86,98,104,105	0
3	BMA	A	603	11/12	0.85	0.35	-	102,104,114,125	0
7	NAG	B	602	14/15	0.90	0.37	-	66,82,92,97	0
3	MAN	A	607	11/12	0.64	0.52	-	69,111,124,126	0
3	NAG	A	602	14/15	0.93	0.34	-	70,78,85,96	0
3	NAG	A	601	14/15	0.93	0.30	-	57,72,78,81	0
3	MAN	A	604	11/12	0.81	0.49	-	103,135,148,150	0

6.4 Ligands [i](#)

In the following table, the Atoms column lists the number of modelled atoms in the group and the number defined in the chemical component dictionary. LLDF column lists the quality of electron density of the group with respect to its neighbouring residues in protein, DNA or RNA chains. The B-factors column lists the minimum, median, 95th percentile and maximum values of B factors of atoms in the group. The column labelled 'Q< 0.9' lists the number of atoms with occupancy less than 0.9.

Mol	Type	Chain	Res	Atoms	RSCC	RSR	LLDF	B-factors(\AA^2)	Q<0.9
6	EDO	B	1466	4/4	0.93	0.44	14.34	53,54,59,62	0
6	EDO	A	1468	4/4	0.96	0.42	12.81	63,74,74,77	0
6	EDO	A	1469	4/4	0.96	0.26	7.11	81,89,96,101	0
6	EDO	A	1466	4/4	0.87	0.28	5.45	54,57,61,61	0
6	EDO	B	1467	4/4	0.98	0.24	3.66	47,48,48,54	0
6	EDO	B	1468	4/4	0.94	0.24	2.08	63,66,69,69	0
5	G39	A	700	20/20	0.96	0.15	0.35	30,40,49,52	0
6	EDO	A	1470	4/4	0.83	0.18	0.11	53,60,62,65	0
5	G39	B	700	20/20	0.96	0.15	0.02	32,38,44,45	0
2	CA	A	500	1/1	0.95	0.12	-1.33	78,78,78,78	0
2	CA	B	500	1/1	0.99	0.08	-3.48	50,50,50,50	0
6	EDO	A	1467	4/4	0.81	0.36	-	81,85,86,86	0
4	NAG	A	611	14/15	0.75	0.64	-	98,106,118,119	0
4	NAG	B	611	14/15	0.86	0.27	-	64,74,105,109	0
4	NAG	A	605	14/15	0.69	0.77	-	132,146,148,148	0

6.5 Other polymers [i](#)

There are no such residues in this entry.