



wwPDB X-ray Structure Validation Summary Report ⓘ

Feb 1, 2016 – 07:58 AM GMT

PDB ID : 3CS9
Title : Human ABL kinase in complex with nilotinib
Authors : Cowan-Jacob, S.W.; Fendrich, G.; Manley, P.; Liebetanz, J.; Fabbro, D.
Deposited on : 2008-04-09
Resolution : 2.21 Å(reported)

This is a wwPDB X-ray Structure Validation Summary Report for a publicly released PDB entry.
We welcome your comments at validation@mail.wwpdb.org
A user guide is available at
<http://wwpdb.org/validation/2016/XrayValidationReportHelp>
with specific help available everywhere you see the ⓘ symbol.

The following versions of software and data (see [references ⓘ](#)) were used in the production of this report:

MolProbity : 4.02b-467
Mogul : 1.7 (RC4), CSD as536be (2015)
Xtriage (Phenix) : 1.9-1692
EDS : rb-20026688
Percentile statistics : 20151230.v01 (using entries in the PDB archive December 30th 2015)
Refmac : 5.8.0135
CCP4 : 6.5.0
Ideal geometry (proteins) : Engh & Huber (2001)
Ideal geometry (DNA, RNA) : Parkinson et al. (1996)
Validation Pipeline (wwPDB-VP) : trunk26865

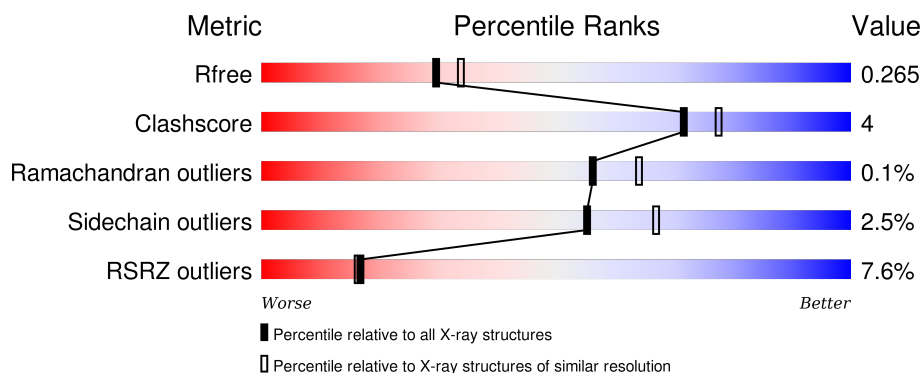
1 Overall quality at a glance

The following experimental techniques were used to determine the structure:

X-RAY DIFFRACTION

The reported resolution of this entry is 2.21 Å.

Percentile scores (ranging between 0-100) for global validation metrics of the entry are shown in the following graphic. The table shows the number of entries on which the scores are based.



Metric	Whole archive (#Entries)	Similar resolution (#Entries, resolution range(Å))
R_{free}	91344	4405 (2.24-2.20)
Clashscore	102246	5146 (2.24-2.20)
Ramachandran outliers	100387	5065 (2.24-2.20)
Sidechain outliers	100360	5066 (2.24-2.20)
RSRZ outliers	91569	4414 (2.24-2.20)

The table below summarises the geometric issues observed across the polymeric chains and their fit to the electron density. The red, orange, yellow and green segments on the lower bar indicate the fraction of residues that contain outliers for ≥ 3 , 2, 1 and 0 types of geometric quality criteria. A grey segment represents the fraction of residues that are not modelled. The numeric value for each fraction is indicated below the corresponding segment, with a dot representing fractions $\leq 5\%$. The upper red bar (where present) indicates the fraction of residues that have poor fit to the electron density. The numeric value is given above the bar.

Mol	Chain	Length	Quality of chain
1	A	277	<div> <div>3%</div> <div>85%</div> <div>10%</div> <div>5%</div> </div>
1	B	277	<div> <div>4%</div> <div>78%</div> <div>10%</div> <div>•</div> <div>11%</div> </div>
1	C	277	<div> <div>3%</div> <div>73%</div> <div>14%</div> <div>•</div> <div>12%</div> </div>
1	D	277	<div> <div>18%</div> <div>81%</div> <div>14%</div> <div>•</div> <div>5%</div> </div>

2 Entry composition

There are 3 unique types of molecules in this entry. The entry contains 8696 atoms, of which 0 are hydrogens and 0 are deuteriums.

In the tables below, the ZeroOcc column contains the number of atoms modelled with zero occupancy, the AltConf column contains the number of residues with at least one atom in alternate conformation and the Trace column contains the number of residues modelled with at most 2 atoms.

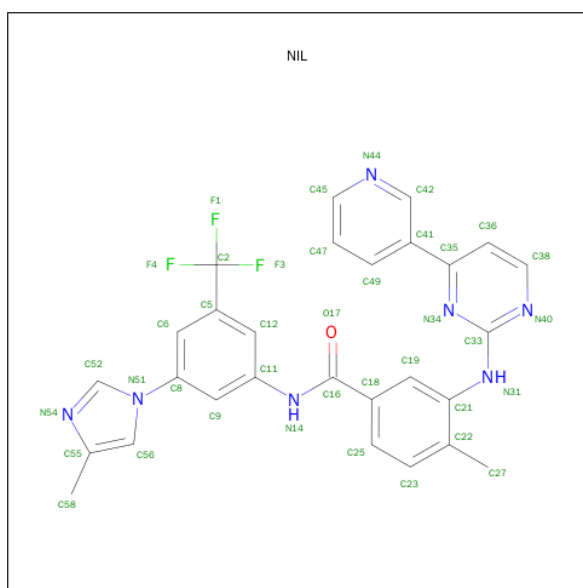
- Molecule 1 is a protein called Proto-oncogene tyrosine-protein kinase ABL1.

Mol	Chain	Residues	Atoms					ZeroOcc	AltConf	Trace
1	A	264	Total	C	N	O	S	0	0	0
			2142	1383	351	392	16			
1	B	247	Total	C	N	O	S	0	2	0
			2033	1315	328	374	16			
1	C	243	Total	C	N	O	S	0	0	0
			1984	1287	323	359	15			
1	D	263	Total	C	N	O	S	0	0	0
			2115	1363	343	392	17			

There are 20 discrepancies between the modelled and reference sequences:

Chain	Residue	Modelled	Actual	Comment	Reference
A	224	GLY	-	EXPRESSION TAG	UNP P00519
A	225	ALA	-	EXPRESSION TAG	UNP P00519
A	226	MET	-	EXPRESSION TAG	UNP P00519
A	227	ASP	-	EXPRESSION TAG	UNP P00519
A	228	PRO	-	EXPRESSION TAG	UNP P00519
B	224	GLY	-	EXPRESSION TAG	UNP P00519
B	225	ALA	-	EXPRESSION TAG	UNP P00519
B	226	MET	-	EXPRESSION TAG	UNP P00519
B	227	ASP	-	EXPRESSION TAG	UNP P00519
B	228	PRO	-	EXPRESSION TAG	UNP P00519
C	224	GLY	-	EXPRESSION TAG	UNP P00519
C	225	ALA	-	EXPRESSION TAG	UNP P00519
C	226	MET	-	EXPRESSION TAG	UNP P00519
C	227	ASP	-	EXPRESSION TAG	UNP P00519
C	228	PRO	-	EXPRESSION TAG	UNP P00519
D	224	GLY	-	EXPRESSION TAG	UNP P00519
D	225	ALA	-	EXPRESSION TAG	UNP P00519
D	226	MET	-	EXPRESSION TAG	UNP P00519
D	227	ASP	-	EXPRESSION TAG	UNP P00519
D	228	PRO	-	EXPRESSION TAG	UNP P00519

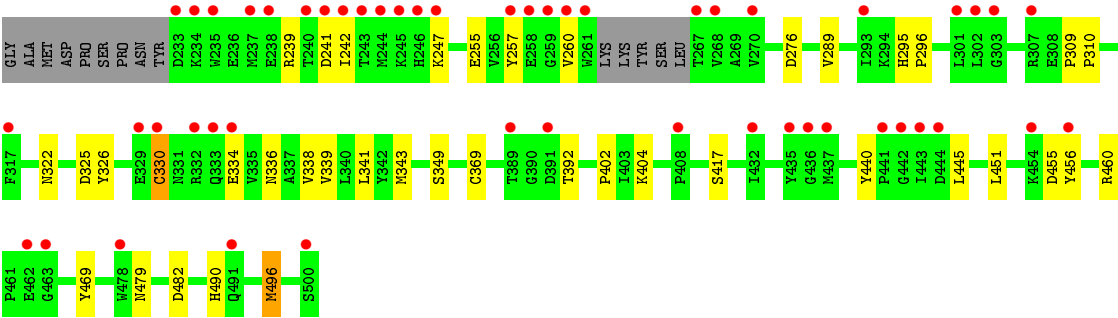
- Molecule 2 is NILOTINIB (three-letter code: NIL) (formula: $C_{28}H_{22}F_3N_7O$).



Mol	Chain	Residues	Atoms					ZeroOcc	AltConf
2	A	1	Total	C	F	N	O	0	0
			39	28	3	7	1		
2	B	1	Total	C	F	N	O	0	0
			39	28	3	7	1		
2	C	1	Total	C	F	N	O	0	0
			39	28	3	7	1		
2	D	1	Total	C	F	N	O	0	0
			39	28	3	7	1		

- Molecule 3 is water.

Mol	Chain	Residues	Atoms		ZeroOcc	AltConf
3	A	99	Total	O	0	0
			99	99		
3	B	79	Total	O	0	0
			79	79		
3	C	63	Total	O	0	0
			63	63		
3	D	25	Total	O	0	0
			25	25		



4 Data and refinement statistics

Property	Value	Source
Space group	P 21 21 21	Depositor
Cell constants a, b, c, α , β , γ	93.93Å 118.09Å 123.68Å 90.00° 90.00° 90.00°	Depositor
Resolution (Å)	40.00 – 2.21 37.40 – 2.21	Depositor EDS
% Data completeness (in resolution range)	98.6 (40.00-2.21) 98.6 (37.40-2.21)	Depositor EDS
R_{merge}	0.06	Depositor
R_{sym}	(Not available)	Depositor
$\langle I/\sigma(I) \rangle$ ¹	3.58 (at 2.20Å)	Xtriage
Refinement program	REFMAC 5.1.9999	Depositor
R, R_{free}	0.197 , 0.242 0.221 , 0.265	Depositor DCC
R_{free} test set	3459 reflections (5.31%)	DCC
Wilson B-factor (Å ²)	39.6	Xtriage
Anisotropy	0.083	Xtriage
Bulk solvent k_{sol} (e/Å ³), B_{sol} (Å ²)	0.37 , 49.4	EDS
Estimated twinning fraction	0.013 for -h,l,k	Xtriage
L-test for twinning ²	$\langle L \rangle = 0.49$, $\langle L^2 \rangle = 0.33$	Xtriage
Outliers	0 of 68883 reflections	Xtriage
F_o, F_c correlation	0.94	EDS
Total number of atoms	8696	wwPDB-VP
Average B, all atoms (Å ²)	49.0	wwPDB-VP

Xtriage's analysis on translational NCS is as follows: *The largest off-origin peak in the Patterson function is 4.54% of the height of the origin peak. No significant pseudotranslation is detected.*

¹Intensities estimated from amplitudes.

²Theoretical values of $\langle |L| \rangle$, $\langle L^2 \rangle$ for acentric reflections are 0.5, 0.375 respectively for untwinned datasets, and 0.333, 0.2 for perfectly twinned datasets.

5 Model quality ⓘ

5.1 Standard geometry ⓘ

Bond lengths and bond angles in the following residue types are not validated in this section:
NIL

The Z score for a bond length (or angle) is the number of standard deviations the observed value is removed from the expected value. A bond length (or angle) with $|Z| > 5$ is considered an outlier worth inspection. RMSZ is the root-mean-square of all Z scores of the bond lengths (or angles).

Mol	Chain	Bond lengths		Bond angles	
		RMSZ	$\# Z > 5$	RMSZ	$\# Z > 5$
1	A	0.94	0/2197	0.91	6/2971 (0.2%)
1	B	0.91	1/2093 (0.0%)	0.91	7/2828 (0.2%)
1	C	0.87	1/2036 (0.0%)	0.85	2/2755 (0.1%)
1	D	0.67	0/2169	0.77	2/2938 (0.1%)
All	All	0.85	2/8495 (0.0%)	0.86	17/11492 (0.1%)

All (2) bond length outliers are listed below:

Mol	Chain	Res	Type	Atoms	Z	Observed(Å)	Ideal(Å)
1	C	290	MET	SD-CE	-5.72	1.45	1.77
1	B	456	TYR	CD1-CE1	5.55	1.47	1.39

The worst 5 of 17 bond angle outliers are listed below:

Mol	Chain	Res	Type	Atoms	Z	Observed(°)	Ideal(°)
1	B	473	ARG	NE-CZ-NH2	-11.26	114.67	120.30
1	A	473	ARG	NE-CZ-NH2	-9.28	115.66	120.30
1	A	421	ASP	CB-CG-OD1	7.01	124.61	118.30
1	B	471	LEU	CA-CB-CG	6.67	130.63	115.30
1	D	455	ASP	CB-CG-OD2	6.59	124.23	118.30

There are no chirality outliers.

There are no planarity outliers.

5.2 Too-close contacts ⓘ

In the following table, the Non-H and H(model) columns list the number of non-hydrogen atoms and hydrogen atoms in the chain respectively. The H(added) column lists the number of hydrogen atoms added and optimized by MolProbity. The Clashes column lists the number of clashes within

the asymmetric unit, whereas Symm-Clashes lists symmetry related clashes.

Mol	Chain	Non-H	H(model)	H(added)	Clashes	Symm-Clashes
1	A	2142	0	2099	13	0
1	B	2033	0	1986	16	0
1	C	1984	0	1943	22	0
1	D	2115	0	2043	20	0
2	A	39	0	22	0	0
2	B	39	0	22	1	0
2	C	39	0	22	1	0
2	D	39	0	22	1	0
3	A	99	0	0	3	0
3	B	79	0	0	3	0
3	C	63	0	0	5	0
3	D	25	0	0	2	0
All	All	8696	0	8159	72	0

The all-atom clashscore is defined as the number of clashes found per 1000 atoms (including hydrogen atoms). The all-atom clashscore for this structure is 4.

The worst 5 of 72 close contacts within the same asymmetric unit are listed below, sorted by their clash magnitude.

Atom-1	Atom-2	Interatomic distance (Å)	Clash overlap (Å)
1:C:454:LYS:HB2	3:C:651:HOH:O	1.85	0.76
1:C:246:HIS:HE1	3:C:656:HOH:O	1.72	0.73
1:B:404:LYS:HE3	1:B:445:LEU:HD23	1.74	0.69
1:C:243:THR:OG1	1:C:262:LYS:HD2	1.95	0.66
1:C:444:ASP:HA	3:C:622:HOH:O	1.95	0.66

There are no symmetry-related clashes.

5.3 Torsion angles [i](#)

5.3.1 Protein backbone [i](#)

In the following table, the Percentiles column shows the percent Ramachandran outliers of the chain as a percentile score with respect to all X-ray entries followed by that with respect to entries of similar resolution.

The Analysed column shows the number of residues for which the backbone conformation was analysed, and the total number of residues.

Mol	Chain	Analysed	Favoured	Allowed	Outliers	Percentiles	
1	A	260/277 (94%)	247 (95%)	13 (5%)	0	100	100
1	B	243/277 (88%)	232 (96%)	11 (4%)	0	100	100
1	C	237/277 (86%)	226 (95%)	11 (5%)	0	100	100
1	D	259/277 (94%)	247 (95%)	11 (4%)	1 (0%)	39	41
All	All	999/1108 (90%)	952 (95%)	46 (5%)	1 (0%)	56	64

All (1) Ramachandran outliers are listed below:

Mol	Chain	Res	Type
1	D	255	GLU

5.3.2 Protein sidechains ⓘ

In the following table, the Percentiles column shows the percent sidechain outliers of the chain as a percentile score with respect to all X-ray entries followed by that with respect to entries of similar resolution.

The Analysed column shows the number of residues for which the sidechain conformation was analysed, and the total number of residues.

Mol	Chain	Analysed	Rotameric	Outliers	Percentiles	
1	A	227/241 (94%)	223 (98%)	4 (2%)	66	79
1	B	219/241 (91%)	212 (97%)	7 (3%)	46	57
1	C	211/241 (88%)	205 (97%)	6 (3%)	51	63
1	D	222/241 (92%)	217 (98%)	5 (2%)	58	70
All	All	879/964 (91%)	857 (98%)	22 (2%)	55	67

5 of 22 residues with a non-rotameric sidechain are listed below:

Mol	Chain	Res	Type
1	B	470	GLU
1	C	308	GLU
1	D	440	TYR
1	B	471	LEU
1	C	239	ARG

Some sidechains can be flipped to improve hydrogen bonding and reduce clashes. 5 of 6 such sidechains are listed below:

Mol	Chain	Res	Type
1	B	252	GLN
1	D	490	HIS
1	C	358	ASN
1	A	490	HIS
1	D	252	GLN

5.3.3 RNA [i](#)

There are no RNA molecules in this entry.

5.4 Non-standard residues in protein, DNA, RNA chains [i](#)

There are no non-standard protein/DNA/RNA residues in this entry.

5.5 Carbohydrates [i](#)

There are no carbohydrates in this entry.

5.6 Ligand geometry [i](#)

4 ligands are modelled in this entry.

In the following table, the Counts columns list the number of bonds (or angles) for which Mogul statistics could be retrieved, the number of bonds (or angles) that are observed in the model and the number of bonds (or angles) that are defined in the chemical component dictionary. The Link column lists molecule types, if any, to which the group is linked. The Z score for a bond length (or angle) is the number of standard deviations the observed value is removed from the expected value. A bond length (or angle) with $|Z| > 2$ is considered an outlier worth inspection. RMSZ is the root-mean-square of all Z scores of the bond lengths (or angles).

Mol	Type	Chain	Res	Link	Bond lengths			Bond angles		
					Counts	RMSZ	$\# Z > 2$	Counts	RMSZ	$\# Z > 2$
2	NIL	A	600	-	41,43,43	1.04	3 (7%)	57,62,62	1.48	9 (15%)
2	NIL	B	600	-	41,43,43	1.28	5 (12%)	57,62,62	1.92	14 (24%)
2	NIL	C	600	-	41,43,43	1.17	3 (7%)	57,62,62	1.86	15 (26%)
2	NIL	D	600	-	41,43,43	1.28	3 (7%)	57,62,62	2.17	15 (26%)

In the following table, the Chirals column lists the number of chiral outliers, the number of chiral centers analysed, the number of these observed in the model and the number defined in the chemical component dictionary. Similar counts are reported in the Torsion and Rings columns. '-' means no outliers of that kind were identified.

Mol	Type	Chain	Res	Link	Chirals	Torsions	Rings
2	NIL	A	600	-	-	0/26/26/26	0/5/5/5
2	NIL	B	600	-	-	0/26/26/26	0/5/5/5
2	NIL	C	600	-	-	0/26/26/26	0/5/5/5
2	NIL	D	600	-	-	0/26/26/26	0/5/5/5

The worst 5 of 14 bond length outliers are listed below:

Mol	Chain	Res	Type	Atoms	Z	Observed(Å)	Ideal(Å)
2	A	600	NIL	C8-N51	-2.56	1.40	1.45
2	C	600	NIL	C8-N51	-2.05	1.41	1.45
2	B	600	NIL	C19-C18	2.01	1.42	1.39
2	D	600	NIL	C23-C25	2.02	1.42	1.38
2	C	600	NIL	C9-C8	2.03	1.41	1.38

The worst 5 of 53 bond angle outliers are listed below:

Mol	Chain	Res	Type	Atoms	Z	Observed(°)	Ideal(°)
2	D	600	NIL	C21-N31-C33	-6.34	112.51	129.22
2	D	600	NIL	N40-C33-N34	-5.70	120.60	126.67
2	B	600	NIL	N40-C33-N34	-5.28	121.04	126.67
2	B	600	NIL	C21-N31-C33	-4.75	116.69	129.22
2	D	600	NIL	C6-C8-C9	-4.06	116.86	121.69

There are no chirality outliers.

There are no torsion outliers.

There are no ring outliers.

3 monomers are involved in 3 short contacts:

Mol	Chain	Res	Type	Clashes	Symm-Clashes
2	B	600	NIL	1	0
2	C	600	NIL	1	0
2	D	600	NIL	1	0

5.7 Other polymers [i](#)

There are no such residues in this entry.

5.8 Polymer linkage issues [i](#)

There are no chain breaks in this entry.

6 Fit of model and data [i](#)

6.1 Protein, DNA and RNA chains [i](#)

In the following table, the column labelled ‘#RSRZ> 2’ contains the number (and percentage) of RSRZ outliers, followed by percent RSRZ outliers for the chain as percentile scores relative to all X-ray entries and entries of similar resolution. The OWAB column contains the minimum, median, 95th percentile and maximum values of the occupancy-weighted average B-factor per residue. The column labelled ‘Q< 0.9’ lists the number of (and percentage) of residues with an average occupancy less than 0.9.

Mol	Chain	Analysed	<RSRZ>	#RSRZ>2	OWAB(Å ²)	Q<0.9
1	A	264/277 (95%)	0.06	8 (3%) 54 53	27, 37, 60, 65	0
1	B	247/277 (89%)	0.17	10 (4%) 42 41	28, 43, 71, 77	0
1	C	243/277 (87%)	0.22	9 (3%) 45 44	33, 46, 61, 70	0
1	D	263/277 (94%)	0.96	50 (19%) 2 1	50, 63, 83, 92	0
All	All	1017/1108 (91%)	0.36	77 (7%) 17 16	27, 48, 73, 92	0

The worst 5 of 77 RSRZ outliers are listed below:

Mol	Chain	Res	Type	RSRZ
1	D	259	GLY	5.8
1	D	333	GLN	5.8
1	D	242	ILE	5.5
1	D	442	GLY	5.2
1	D	240	THR	5.2

6.2 Non-standard residues in protein, DNA, RNA chains [i](#)

There are no non-standard protein/DNA/RNA residues in this entry.

6.3 Carbohydrates [i](#)

There are no carbohydrates in this entry.

6.4 Ligands [i](#)

In the following table, the Atoms column lists the number of modelled atoms in the group and the number defined in the chemical component dictionary. LLDF column lists the quality of electron density of the group with respect to its neighbouring residues in protein, DNA or RNA chains. The B-factors column lists the minimum, median, 95th percentile and maximum values of B factors

of atoms in the group. The column labelled 'Q< 0.9' lists the number of atoms with occupancy less than 0.9.

Mol	Type	Chain	Res	Atoms	RSCC	RSR	LLDF	B-factors(\AA^2)	Q<0.9
2	NIL	A	600	39/39	0.96	0.17	0.60	27,34,45,46	0
2	NIL	B	600	39/39	0.95	0.14	0.14	38,44,55,55	0
2	NIL	C	600	39/39	0.94	0.16	0.10	33,37,48,51	0
2	NIL	D	600	39/39	0.92	0.14	-0.24	51,60,63,64	0

6.5 Other polymers [i](#)

There are no such residues in this entry.