



Full wwPDB X-ray Structure Validation Report ⓘ

Feb 19, 2016 – 10:27 PM GMT

PDB ID : 5CVV
Title : coniferyl alcohol bound monolignol 4-O-methyltransferase 9
Authors : Cai, Y.; Liu, C.-J.
Deposited on : 2015-07-27
Resolution : 1.73 Å(reported)

This is a Full wwPDB X-ray Structure Validation Report for a publicly released PDB entry.
We welcome your comments at validation@mail.wwpdb.org
A user guide is available at
<http://wwpdb.org/validation/2016/XrayValidationReportHelp>
with specific help available everywhere you see the ⓘ symbol.

The following versions of software and data (see [references ⓘ](#)) were used in the production of this report:

MolProbity : 4.02b-467
Mogul : 1.7.1 (RC1), CSD as537be (2016)
Xtriage (Phenix) : 1.9-1692
EDS : rb-20026982
Percentile statistics : 20151230.v01 (using entries in the PDB archive December 30th 2015)
Refmac : 5.8.0135
CCP4 : 6.5.0
Ideal geometry (proteins) : Engh & Huber (2001)
Ideal geometry (DNA, RNA) : Parkinson et al. (1996)
Validation Pipeline (wwPDB-VP) : rb-20026982

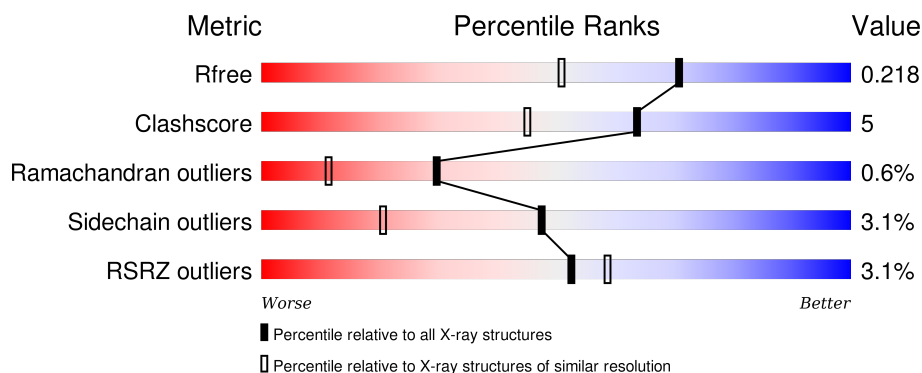
1 Overall quality at a glance

The following experimental techniques were used to determine the structure:

X-RAY DIFFRACTION


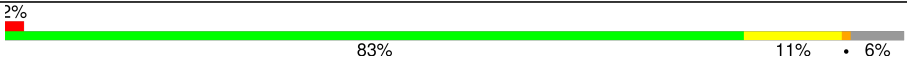
The reported resolution of this entry is 1.73 Å.

Percentile scores (ranging between 0-100) for global validation metrics of the entry are shown in the following graphic. The table shows the number of entries on which the scores are based.



Metric	Whole archive (#Entries)	Similar resolution (#Entries, resolution range(Å))
R_{free}	91344	2417 (1.76-1.72)
Clashscore	102246	2570 (1.76-1.72)
Ramachandran outliers	100387	2544 (1.76-1.72)
Sidechain outliers	100360	2544 (1.76-1.72)
RSRZ outliers	91569	2420 (1.76-1.72)

The table below summarises the geometric issues observed across the polymeric chains and their fit to the electron density. The red, orange, yellow and green segments on the lower bar indicate the fraction of residues that contain outliers for ≥ 3 , 2, 1 and 0 types of geometric quality criteria. A grey segment represents the fraction of residues that are not modelled. The numeric value for each fraction is indicated below the corresponding segment, with a dot representing fractions $\leq 5\%$. The upper red bar (where present) indicates the fraction of residues that have poor fit to the electron density. The numeric value is given above the bar.

Mol	Chain	Length	Quality of chain
1	A	368	 4% 83% 11% • •
1	B	368	 2% 83% 11% • 6%

The following table lists non-polymeric compounds, carbohydrate monomers and non-standard residues in protein, DNA, RNA chains that are outliers for geometric or electron-density-fit criteria:

Mol	Type	Chain	Res	Chirality	Geometry	Clashes	Electron density
3	N7I	A	402	-	-	-	X

2 Entry composition

There are 4 unique types of molecules in this entry. The entry contains 5713 atoms, of which 0 are hydrogens and 0 are deuteriums.

In the tables below, the ZeroOcc column contains the number of atoms modelled with zero occupancy, the AltConf column contains the number of residues with at least one atom in alternate conformation and the Trace column contains the number of residues modelled with at most 2 atoms.

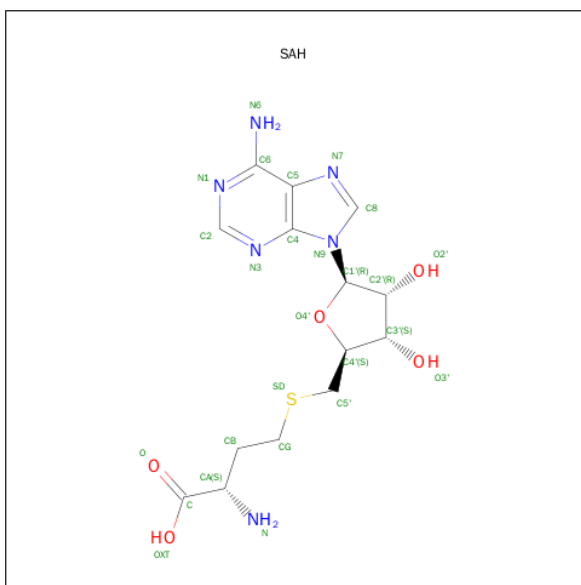
- Molecule 1 is a protein called (Iso)eugenol O-methyltransferase.

Mol	Chain	Residues	Atoms					ZeroOcc	AltConf	Trace
1	A	353	Total	C	N	O	S	0	0	0
			2707	1752	437	500	18			
1	B	347	Total	C	N	O	S	0	0	0
			2668	1728	431	491	18			

There are 18 discrepancies between the modelled and reference sequences:

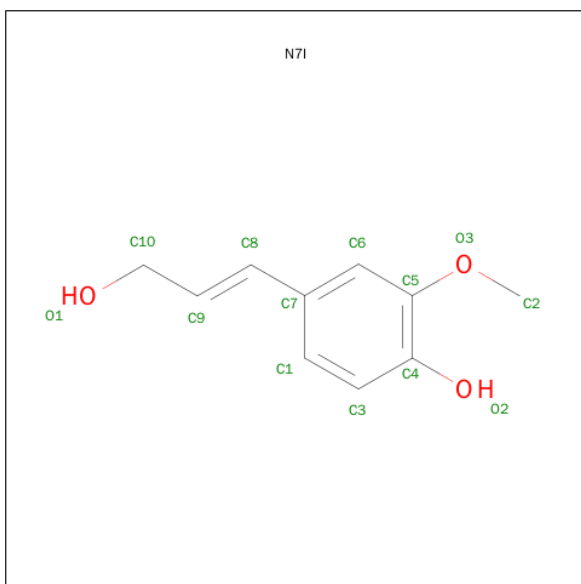
Chain	Residue	Modelled	Actual	Comment	Reference
A	26	HIS	MET	engineered mutation	UNP O04385
A	30	ARG	SER	engineered mutation	UNP O04385
A	33	SER	VAL	engineered mutation	UNP O04385
A	133	LEU	THR	engineered mutation	UNP O04385
A	165	ILE	GLU	engineered mutation	UNP O04385
A	166	TRP	PHE	engineered mutation	UNP O04385
A	169	PHE	HIS	engineered mutation	UNP O04385
A	175	ILE	PHE	engineered mutation	UNP O04385
A	319	MET	THR	engineered mutation	UNP O04385
B	26	HIS	MET	engineered mutation	UNP O04385
B	30	ARG	SER	engineered mutation	UNP O04385
B	33	SER	VAL	engineered mutation	UNP O04385
B	133	LEU	THR	engineered mutation	UNP O04385
B	165	ILE	GLU	engineered mutation	UNP O04385
B	166	TRP	PHE	engineered mutation	UNP O04385
B	169	PHE	HIS	engineered mutation	UNP O04385
B	175	ILE	PHE	engineered mutation	UNP O04385
B	319	MET	THR	engineered mutation	UNP O04385

- Molecule 2 is S-ADENOSYL-L-HOMOCYSTEINE (three-letter code: SAH) (formula: C₁₄H₂₀N₆O₅S).



Mol	Chain	Residues	Atoms					ZeroOcc	AltConf
2	A	1	Total 26	C 14	N 6	O 5	S 1	0	0
2	B	1	Total 26	C 14	N 6	O 5	S 1	0	0

- Molecule 3 is 4-[(1E)-3-hydroxyprop-1-en-1-yl]-2-methoxyphenol (three-letter code: N7I) (formula: C₁₀H₁₂O₃).



Mol	Chain	Residues	Atoms			ZeroOcc	AltConf
3	A	1	Total	C	O	0	0
			13	10	3		

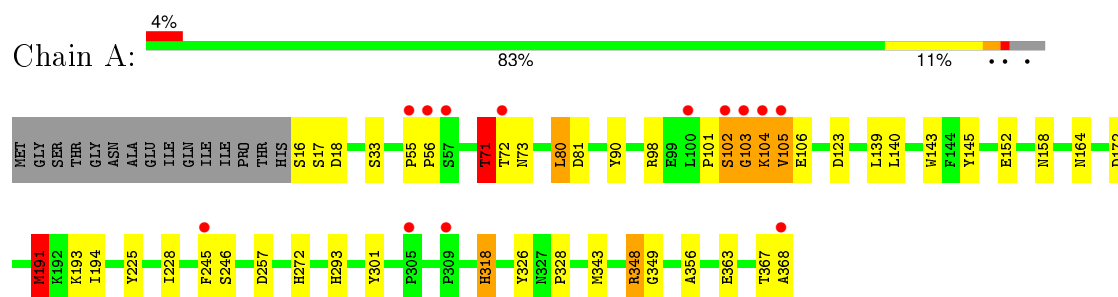
- Molecule 4 is water.

Mol	Chain	Residues	Atoms		ZeroOcc	AltConf
4	A	149	Total 149	O 149	0	0
4	B	124	Total 124	O 124	0	0

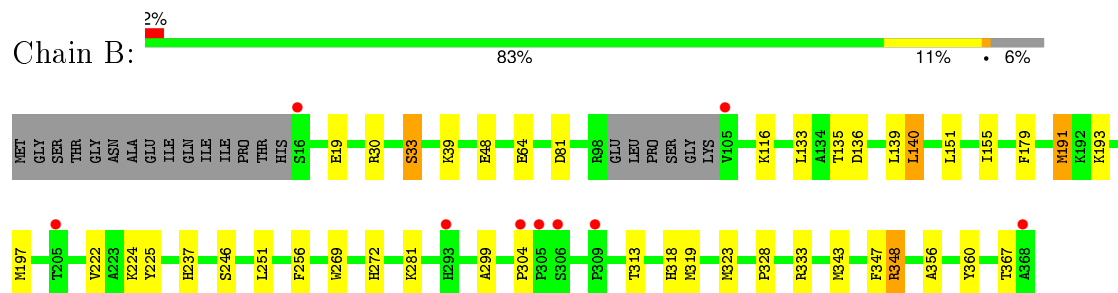
3 Residue-property plots [i](#)

These plots are drawn for all protein, RNA and DNA chains in the entry. The first graphic for a chain summarises the proportions of errors displayed in the second graphic. The second graphic shows the sequence view annotated by issues in geometry and electron density. Residues are color-coded according to the number of geometric quality criteria for which they contain at least one outlier: green = 0, yellow = 1, orange = 2 and red = 3 or more. A red dot above a residue indicates a poor fit to the electron density ($RSRZ > 2$). Stretches of 2 or more consecutive residues without any outlier are shown as a green connector. Residues present in the sample, but not in the model, are shown in grey.

- Molecule 1: (Iso)eugenol O-methyltransferase



- Molecule 1: (Iso)eugenol O-methyltransferase



4 Data and refinement statistics

Property	Value	Source
Space group	P 1 21 1	Depositor
Cell constants a, b, c, α , β , γ	68.29Å 67.48Å 74.07Å 90.00° 93.18° 90.00°	Depositor
Resolution (Å)	73.96 – 1.73 49.85 – 1.73	Depositor EDS
% Data completeness (in resolution range)	100.0 (73.96-1.73) 100.0 (49.85-1.73)	Depositor EDS
R_{merge}	(Not available)	Depositor
R_{sym}	(Not available)	Depositor
$\langle I/\sigma(I) \rangle$ ¹	3.15 (at 1.73Å)	Xtriage
Refinement program	REFMAC 5.8.0103	Depositor
R, R_{free}	0.181 , 0.212 0.190 , 0.218	Depositor DCC
R_{free} test set	3541 reflections (5.31%)	DCC
Wilson B-factor (Å ²)	23.4	Xtriage
Anisotropy	0.247	Xtriage
Bulk solvent k_{sol} (e/Å ³), B_{sol} (Å ²)	0.33 , 37.7	EDS
Estimated twinning fraction	No twinning to report.	Xtriage
L-test for twinning ²	$\langle L \rangle = 0.49$, $\langle L^2 \rangle = 0.32$	Xtriage
Outliers	0 of 70212 reflections	Xtriage
F_o, F_c correlation	0.96	EDS
Total number of atoms	5713	wwPDB-VP
Average B, all atoms (Å ²)	28.0	wwPDB-VP

Xtriage's analysis on translational NCS is as follows: *The largest off-origin peak in the Patterson function is 5.41% of the height of the origin peak. No significant pseudotranslation is detected.*

¹Intensities estimated from amplitudes.

²Theoretical values of $\langle |L| \rangle$, $\langle L^2 \rangle$ for acentric reflections are 0.5, 0.375 respectively for untwinned datasets, and 0.333, 0.2 for perfectly twinned datasets.

5 Model quality

5.1 Standard geometry

Bond lengths and bond angles in the following residue types are not validated in this section: SAH, N7I

The Z score for a bond length (or angle) is the number of standard deviations the observed value is removed from the expected value. A bond length (or angle) with $|Z| > 5$ is considered an outlier worth inspection. RMSZ is the root-mean-square of all Z scores of the bond lengths (or angles).

Mol	Chain	Bond lengths		Bond angles	
		RMSZ	$\# Z > 5$	RMSZ	$\# Z > 5$
1	A	1.22	6/2774 (0.2%)	1.15	13/3769 (0.3%)
1	B	1.11	2/2733 (0.1%)	1.05	8/3711 (0.2%)
All	All	1.16	8/5507 (0.1%)	1.10	21/7480 (0.3%)

Chiral center outliers are detected by calculating the chiral volume of a chiral center and verifying if the center is modelled as a planar moiety or with the opposite hand. A planarity outlier is detected by checking planarity of atoms in a peptide group, atoms in a mainchain group or atoms of a sidechain that are expected to be planar.

Mol	Chain	#Chirality outliers	#Planarity outliers
1	A	0	2

All (8) bond length outliers are listed below:

Mol	Chain	Res	Type	Atoms	Z	Observed(Å)	Ideal(Å)
1	A	152	GLU	CD-OE1	6.31	1.32	1.25
1	B	19	GLU	CD-OE1	6.06	1.32	1.25
1	A	145	TYR	CG-CD1	-5.90	1.31	1.39
1	A	245	PHE	CG-CD2	5.72	1.47	1.38
1	A	363	GLU	CD-OE2	5.49	1.31	1.25
1	A	326	TYR	CZ-OH	5.18	1.46	1.37
1	A	71	THR	CB-CG2	-5.14	1.35	1.52
1	B	48	GLU	CD-OE1	5.13	1.31	1.25

All (21) bond angle outliers are listed below:

Mol	Chain	Res	Type	Atoms	Z	Observed(°)	Ideal(°)
1	A	191	MET	CG-SD-CE	8.64	114.02	100.20
1	B	81	ASP	CB-CG-OD1	7.20	124.78	118.30
1	A	81	ASP	CB-CG-OD1	6.76	124.39	118.30

Continued on next page...

Continued from previous page...

Mol	Chain	Res	Type	Atoms	Z	Observed(°)	Ideal(°)
1	A	301	TYR	CB-CG-CD1	6.67	125.00	121.00
1	A	71	THR	N-CA-C	6.64	128.92	111.00
1	B	140	LEU	CB-CG-CD2	6.10	121.38	111.00
1	B	319	MET	CG-SD-CE	5.93	109.69	100.20
1	B	348	ARG	NE-CZ-NH1	5.83	123.21	120.30
1	A	363	GLU	OE1-CD-OE2	5.78	130.23	123.30
1	A	172	ASP	CB-CG-OD1	5.67	123.40	118.30
1	A	80	LEU	CA-CB-CG	5.63	128.25	115.30
1	B	333	ARG	NE-CZ-NH1	5.62	123.11	120.30
1	B	323	MET	CG-SD-CE	5.55	109.07	100.20
1	A	301	TYR	CZ-CE2-CD2	5.53	124.78	119.80
1	A	257	ASP	CB-CG-OD1	5.42	123.18	118.30
1	A	140	LEU	CB-CG-CD1	5.42	120.21	111.00
1	A	348	ARG	NE-CZ-NH1	5.39	122.99	120.30
1	A	245	PHE	N-CA-CB	5.37	120.27	110.60
1	B	191	MET	CG-SD-CE	5.16	108.46	100.20
1	A	257	ASP	CB-CG-OD2	-5.09	113.72	118.30
1	B	333	ARG	NE-CZ-NH2	-5.07	117.76	120.30

There are no chirality outliers.

All (2) planarity outliers are listed below:

Mol	Chain	Res	Type	Group
1	A	16	SER	Peptide
1	A	71	THR	Peptide

5.2 Too-close contacts ⓘ

In the following table, the Non-H and H(model) columns list the number of non-hydrogen atoms and hydrogen atoms in the chain respectively. The H(added) column lists the number of hydrogen atoms added and optimized by MolProbity. The Clashes column lists the number of clashes within the asymmetric unit, whereas Symm-Clashes lists symmetry related clashes.

Mol	Chain	Non-H	H(model)	H(added)	Clashes	Symm-Clashes
1	A	2707	0	2712	33	0
1	B	2668	0	2677	30	0
2	A	26	0	19	0	0
2	B	26	0	19	0	0
3	A	13	0	12	5	0
4	A	149	0	0	2	0
4	B	124	0	0	6	0

Continued on next page...

Continued from previous page...

Mol	Chain	Non-H	H(model)	H(added)	Clashes	Symm-Clashes
All	All	5713	0	5439	56	0

The all-atom clashscore is defined as the number of clashes found per 1000 atoms (including hydrogen atoms). The all-atom clashscore for this structure is 5.

All (56) close contacts within the same asymmetric unit are listed below, sorted by their clash magnitude.

Atom-1	Atom-2	Interatomic distance (Å)	Clash overlap (Å)
1:A:71:THR:HB	1:A:72:THR:HA	1.32	1.08
1:A:139:LEU:HG	3:A:402:N7I:O1	1.68	0.93
1:B:64:GLU:OE1	4:B:501:HOH:O	1.85	0.93
1:A:191:MET:HE2	1:A:194:ILE:HD12	1.60	0.83
3:A:402:N7I:C10	1:B:30:ARG:HH12	1.98	0.76
1:A:104:LYS:O	1:A:105:VAL:HG22	1.88	0.73
3:A:402:N7I:H10	1:B:30:ARG:HH12	1.53	0.72
1:B:136:ASP:O	1:B:140:LEU:HD23	1.89	0.71
1:A:55:PRO:HB2	1:A:56:PRO:HD2	1.75	0.69
1:A:18:ASP:OD1	1:B:116:LYS:NZ	2.16	0.68
1:A:71:THR:HB	1:A:72:THR:CA	2.17	0.67
1:A:90:TYR:OH	1:B:318:HIS:HE1	1.76	0.67
1:A:191:MET:HE2	1:A:194:ILE:CD1	2.24	0.67
1:A:101:PRO:O	1:A:103:GLY:N	2.24	0.64
1:A:33:SER:OG	1:B:318:HIS:HD2	1.78	0.64
1:A:71:THR:HG23	1:B:151:LEU:HA	1.78	0.64
3:A:402:N7I:C8	1:B:30:ARG:HH22	2.13	0.62
1:A:225:TYR:O	1:A:228:ILE:HG22	1.99	0.62
1:A:191:MET:CE	1:A:194:ILE:HD12	2.28	0.61
1:B:39:LYS:HE2	4:B:603:HOH:O	2.01	0.60
1:B:343:MET:HE2	1:B:347:PHE:O	2.02	0.60
1:A:98:ARG:HD2	1:A:106:GLU:OE1	2.02	0.59
1:B:343:MET:O	1:B:348:ARG:NH2	2.36	0.58
1:B:193:LYS:HG2	1:B:356:ALA:HB1	1.87	0.56
1:B:256:PHE:O	1:B:281:LYS:NZ	2.40	0.55
3:A:402:N7I:H10A	1:B:30:ARG:HH12	1.73	0.53
1:A:193:LYS:HG2	1:A:356:ALA:HB1	1.92	0.50
1:A:71:THR:HG22	1:A:73:ASN:H	1.76	0.50
1:A:143:TRP:CZ2	1:B:33:SER:HB3	2.47	0.50
1:B:224:LYS:HD3	1:B:225:TYR:CE2	2.47	0.50
1:B:304:PRO:HG2	1:B:313:THR:OG1	2.13	0.49
1:B:343:MET:HE3	4:B:600:HOH:O	2.11	0.49
1:A:164:ASN:OD1	4:A:502:HOH:O	2.19	0.47

Continued on next page...

Continued from previous page...

Atom-1	Atom-2	Interatomic distance (Å)	Clash overlap (Å)
1:A:71:THR:HG21	1:A:73:ASN:HB3	1.96	0.47
1:A:158:ASN:N	1:A:158:ASN:HD22	2.13	0.46
1:A:71:THR:CB	1:A:72:THR:HA	2.19	0.46
1:B:191:MET:HE2	1:B:191:MET:HA	1.98	0.46
1:A:328:PRO:HD2	4:A:562:HOH:O	2.16	0.46
1:B:222:VAL:HG11	1:B:246:SER:O	2.15	0.46
1:A:101:PRO:C	1:A:103:GLY:N	2.70	0.45
1:A:55:PRO:HB2	1:A:56:PRO:CD	2.45	0.45
1:B:135:THR:HA	1:B:140:LEU:HD21	1.98	0.45
1:B:237:HIS:HE1	4:B:602:HOH:O	2.00	0.45
1:A:293:HIS:CD2	1:A:367:THR:HG21	2.52	0.44
1:A:349:GLY:HA3	1:A:368:ALA:HB2	1.98	0.44
1:B:343:MET:CE	4:B:600:HOH:O	2.65	0.44
1:A:318:HIS:CE1	1:B:30:ARG:O	2.71	0.44
1:B:237:HIS:CD2	4:B:511:HOH:O	2.70	0.43
1:B:155:ILE:HD11	1:B:328:PRO:HB3	2.00	0.43
1:A:71:THR:CG2	1:B:151:LEU:O	2.67	0.42
1:A:71:THR:N	1:A:72:THR:HG23	2.35	0.42
1:B:133:LEU:HD13	1:B:179:PHE:HA	2.02	0.41
1:B:299:ALA:HA	1:B:360:TYR:O	2.21	0.41
1:A:191:MET:HE2	1:A:191:MET:HA	2.03	0.40
1:A:103:GLY:O	1:A:104:LYS:CB	2.69	0.40
1:A:71:THR:H	1:A:72:THR:HG23	1.86	0.40

There are no symmetry-related clashes.

5.3 Torsion angles [i](#)

5.3.1 Protein backbone [i](#)

In the following table, the Percentiles column shows the percent Ramachandran outliers of the chain as a percentile score with respect to all X-ray entries followed by that with respect to entries of similar resolution.

The Analysed column shows the number of residues for which the backbone conformation was analysed, and the total number of residues.

Mol	Chain	Analysed	Favoured	Allowed	Outliers	Percentiles
1	A	351/368 (95%)	343 (98%)	4 (1%)	4 (1%)	17 4
1	B	343/368 (93%)	339 (99%)	4 (1%)	0	100 100

Continued on next page...

Continued from previous page...

Mol	Chain	Analysed	Favoured	Allowed	Outliers	Percentiles	
All	All	694/736 (94%)	682 (98%)	8 (1%)	4 (1%)	30	11

All (4) Ramachandran outliers are listed below:

Mol	Chain	Res	Type
1	A	104	LYS
1	A	103	GLY
1	A	105	VAL
1	A	102	SER

5.3.2 Protein sidechains ⓘ

In the following table, the Percentiles column shows the percent sidechain outliers of the chain as a percentile score with respect to all X-ray entries followed by that with respect to entries of similar resolution.

The Analysed column shows the number of residues for which the sidechain conformation was analysed, and the total number of residues.

Mol	Chain	Analysed	Rotameric	Outliers	Percentiles	
1	A	289/302 (96%)	278 (96%)	11 (4%)	40	14
1	B	285/302 (94%)	278 (98%)	7 (2%)	55	29
All	All	574/604 (95%)	556 (97%)	18 (3%)	47	20

All (18) residues with a non-rotameric sidechain are listed below:

Mol	Chain	Res	Type
1	A	17	SER
1	A	71	THR
1	A	80	LEU
1	A	102	SER
1	A	123	ASP
1	A	191	MET
1	A	246	SER
1	A	272	HIS
1	A	318	HIS
1	A	343	MET
1	A	348	ARG
1	B	33	SER
1	B	139	LEU
1	B	197	MET

Continued on next page...

Continued from previous page...

Mol	Chain	Res	Type
1	B	251	LEU
1	B	269	TRP
1	B	272	HIS
1	B	367	THR

Some sidechains can be flipped to improve hydrogen bonding and reduce clashes. All (10) such sidechains are listed below:

Mol	Chain	Res	Type
1	A	158	ASN
1	A	180	ASN
1	A	232	ASN
1	A	293	HIS
1	B	73	ASN
1	B	158	ASN
1	B	180	ASN
1	B	232	ASN
1	B	237	HIS
1	B	318	HIS

5.3.3 RNA ⓘ

There are no RNA molecules in this entry.

5.4 Non-standard residues in protein, DNA, RNA chains ⓘ

There are no non-standard protein/DNA/RNA residues in this entry.

5.5 Carbohydrates ⓘ

There are no carbohydrates in this entry.

5.6 Ligand geometry ⓘ

3 ligands are modelled in this entry.

In the following table, the Counts columns list the number of bonds (or angles) for which Mogul statistics could be retrieved, the number of bonds (or angles) that are observed in the model and the number of bonds (or angles) that are defined in the chemical component dictionary. The Link column lists molecule types, if any, to which the group is linked. The Z score for a bond length

(or angle) is the number of standard deviations the observed value is removed from the expected value. A bond length (or angle) with $|Z| > 2$ is considered an outlier worth inspection. RMSZ is the root-mean-square of all Z scores of the bond lengths (or angles).

Mol	Type	Chain	Res	Link	Bond lengths			Bond angles		
					Counts	RMSZ	# Z > 2	Counts	RMSZ	# Z > 2
2	SAH	A	401	-	22,28,28	1.44	3 (13%)	18,40,40	2.40	7 (38%)
3	N7I	A	402	-	13,13,13	2.95	4 (30%)	15,16,16	2.82	7 (46%)
2	SAH	B	401	-	22,28,28	1.57	6 (27%)	18,40,40	4.07	6 (33%)

In the following table, the Chirals column lists the number of chiral outliers, the number of chiral centers analysed, the number of these observed in the model and the number defined in the chemical component dictionary. Similar counts are reported in the Torsion and Rings columns. '-' means no outliers of that kind were identified.

Mol	Type	Chain	Res	Link	Chirals	Torsions	Rings
2	SAH	A	401	-	-	0/7/31/31	0/3/3/3
3	N7I	A	402	-	-	0/6/6/6	0/1/1/1
2	SAH	B	401	-	-	0/7/31/31	0/3/3/3

All (13) bond length outliers are listed below:

Mol	Chain	Res	Type	Atoms	Z	Observed(Å)	Ideal(Å)
3	A	402	N7I	C7-C8	-3.65	1.36	1.47
2	A	401	SAH	C8-N7	-2.31	1.30	1.34
2	B	401	SAH	O3'-C3'	-2.19	1.37	1.43
2	B	401	SAH	O2'-C2'	-2.13	1.37	1.43
2	B	401	SAH	O4'-C4'	2.20	1.50	1.45
2	B	401	SAH	C2-N1	2.54	1.38	1.33
3	A	402	N7I	C3-C1	2.75	1.44	1.38
2	B	401	SAH	C2-N3	2.80	1.37	1.32
2	B	401	SAH	O4'-C1'	3.27	1.45	1.41
2	A	401	SAH	C5-C4	3.50	1.48	1.40
2	A	401	SAH	C2-N3	3.56	1.38	1.32
3	A	402	N7I	C8-C9	5.53	1.50	1.31
3	A	402	N7I	O2-C4	7.03	1.50	1.36

All (20) bond angle outliers are listed below:

Mol	Chain	Res	Type	Atoms	Z	Observed(°)	Ideal(°)
2	B	401	SAH	N3-C2-N1	-13.21	118.50	128.87
3	A	402	N7I	C3-C4-C5	-6.31	112.20	119.51
2	B	401	SAH	C1'-N9-C4	-6.30	119.77	126.81
2	A	401	SAH	C1'-N9-C4	-5.37	120.81	126.81

Continued on next page...

Continued from previous page...

Mol	Chain	Res	Type	Atoms	Z	Observed(°)	Ideal(°)
2	B	401	SAH	C4'-O4'-C1'	-5.04	104.30	109.64
2	A	401	SAH	N3-C2-N1	-4.16	125.60	128.87
2	A	401	SAH	C4'-O4'-C1'	-3.49	105.94	109.64
3	A	402	N7I	C3-C1-C7	-2.72	117.93	121.29
3	A	402	N7I	C7-C8-C9	-2.45	120.32	127.08
2	B	401	SAH	O4'-C4'-C5'	-2.42	102.27	108.85
2	A	401	SAH	O4'-C1'-N9	-2.15	104.04	108.11
2	A	401	SAH	O2'-C2'-C3'	2.47	119.84	111.86
2	A	401	SAH	C2-N1-C6	2.62	123.44	118.77
3	A	402	N7I	O2-C4-C3	2.91	127.28	119.36
3	A	402	N7I	C2-O3-C5	3.23	122.25	117.53
2	A	401	SAH	N6-C6-N1	3.31	124.06	118.52
3	A	402	N7I	C6-C5-C4	3.59	123.83	120.05
2	B	401	SAH	N6-C6-N1	4.45	125.97	118.52
3	A	402	N7I	C1-C3-C4	4.94	125.45	120.50
2	B	401	SAH	C2-N1-C6	4.96	127.62	118.77

There are no chirality outliers.

There are no torsion outliers.

There are no ring outliers.

1 monomer is involved in 5 short contacts:

Mol	Chain	Res	Type	Clashes	Symm-Clashes
3	A	402	N7I	5	0

5.7 Other polymers [i](#)

There are no such residues in this entry.

5.8 Polymer linkage issues [i](#)

There are no chain breaks in this entry.

6 Fit of model and data

6.1 Protein, DNA and RNA chains

In the following table, the column labelled ‘#RSRZ> 2’ contains the number (and percentage) of RSRZ outliers, followed by percent RSRZ outliers for the chain as percentile scores relative to all X-ray entries and entries of similar resolution. The OWAB column contains the minimum, median, 95th percentile and maximum values of the occupancy-weighted average B-factor per residue. The column labelled ‘Q< 0.9’ lists the number of (and percentage) of residues with an average occupancy less than 0.9.

Mol	Chain	Analysed	<RSRZ>	#RSRZ>2	OWAB(Å ²)	Q<0.9
1	A	353/368 (95%)	-0.07	13 (3%) 45 51	13, 24, 49, 82	0
1	B	347/368 (94%)	-0.09	9 (2%) 59 66	14, 28, 48, 76	0
All	All	700/736 (95%)	-0.08	22 (3%) 52 59	13, 26, 50, 82	0

All (22) RSRZ outliers are listed below:

Mol	Chain	Res	Type	RSRZ
1	A	56	PRO	6.6
1	A	103	GLY	6.2
1	A	104	LYS	4.8
1	A	309	PRO	4.3
1	A	100	LEU	4.0
1	A	102	SER	3.9
1	A	55	PRO	3.7
1	A	368	ALA	3.6
1	B	368	ALA	3.3
1	B	105	VAL	3.1
1	B	309	PRO	3.0
1	B	304	PRO	3.0
1	B	16	SER	2.8
1	B	293	HIS	2.7
1	A	57	SER	2.5
1	A	105	VAL	2.4
1	A	245	PHE	2.3
1	B	305	PRO	2.3
1	A	72	THR	2.2
1	A	305	PRO	2.1
1	B	306	SER	2.1
1	B	205	THR	2.0

6.2 Non-standard residues in protein, DNA, RNA chains [i](#)

There are no non-standard protein/DNA/RNA residues in this entry.

6.3 Carbohydrates [i](#)

There are no carbohydrates in this entry.

6.4 Ligands [i](#)

In the following table, the Atoms column lists the number of modelled atoms in the group and the number defined in the chemical component dictionary. LLDF column lists the quality of electron density of the group with respect to its neighbouring residues in protein, DNA or RNA chains. The B-factors column lists the minimum, median, 95th percentile and maximum values of B factors of atoms in the group. The column labelled 'Q< 0.9' lists the number of atoms with occupancy less than 0.9.

Mol	Type	Chain	Res	Atoms	RSCC	RSR	LLDF	B-factors(\AA^2)	Q<0.9
3	N7I	A	402	13/13	0.83	0.23	17.51	24,42,64,70	0
2	SAH	B	401	26/26	0.96	0.08	0.03	18,23,27,29	0
2	SAH	A	401	26/26	0.97	0.08	-0.11	12,14,18,20	0

6.5 Other polymers [i](#)

There are no such residues in this entry.