



Full wwPDB X-ray Structure Validation Report ⓘ

Feb 1, 2016 – 03:38 PM GMT

PDB ID : 4CYO
Title : Leishmania major N-myristoyltransferase in complex with a hybrid inhibitor (compound 21).
Authors : Hutton, J.A.; Goncalves, V.; Brannigan, J.A.; Paape, D.; Waugh, T.; Roberts, S.M.; Bell, A.S.; Wilkinson, A.J.; Smith, D.F.; Leatherbarrow, R.J.; Tate, E.W.
Deposited on : 2014-04-14
Resolution : 1.50 Å(reported)

This is a Full wwPDB X-ray Structure Validation Report for a publicly released PDB entry.
We welcome your comments at validation@mail.wwpdb.org
A user guide is available at
<http://wwpdb.org/validation/2016/XrayValidationReportHelp>
with specific help available everywhere you see the ⓘ symbol.

The following versions of software and data (see [references ⓘ](#)) were used in the production of this report:

MolProbity : 4.02b-467
Mogul : 1.7 (RC4), CSD as536be (2015)
Xtriage (Phenix) : 1.9-1692
EDS : rb-20026688
Percentile statistics : 20151230.v01 (using entries in the PDB archive December 30th 2015)
Refmac : 5.8.0135
CCP4 : 6.5.0
Ideal geometry (proteins) : Engh & Huber (2001)
Ideal geometry (DNA, RNA) : Parkinson et al. (1996)
Validation Pipeline (wwPDB-VP) : trunk26865

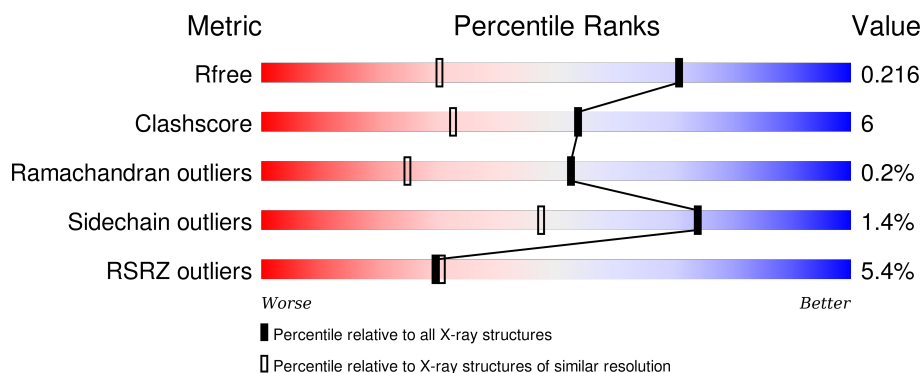
1 Overall quality at a glance

The following experimental techniques were used to determine the structure:

X-RAY DIFFRACTION

The reported resolution of this entry is 1.50 Å.

Percentile scores (ranging between 0-100) for global validation metrics of the entry are shown in the following graphic. The table shows the number of entries on which the scores are based.



Metric	Whole archive (#Entries)	Similar resolution (#Entries, resolution range(Å))
R_{free}	91344	2072 (1.50-1.50)
Clashscore	102246	2274 (1.50-1.50)
Ramachandran outliers	100387	2218 (1.50-1.50)
Sidechain outliers	100360	2216 (1.50-1.50)
RSRZ outliers	91569	2075 (1.50-1.50)

The table below summarises the geometric issues observed across the polymeric chains and their fit to the electron density. The red, orange, yellow and green segments on the lower bar indicate the fraction of residues that contain outliers for ≥ 3 , 2, 1 and 0 types of geometric quality criteria. A grey segment represents the fraction of residues that are not modelled. The numeric value for each fraction is indicated below the corresponding segment, with a dot representing fractions $\leq 5\%$. The upper red bar (where present) indicates the fraction of residues that have poor fit to the electron density. The numeric value is given above the bar.

Mol	Chain	Length	Quality of chain
1	A	411	<div> <div>5%</div> <div>86%</div> <div>12%</div> </div>

2 Entry composition [i](#)

There are 5 unique types of molecules in this entry. The entry contains 4052 atoms, of which 0 are hydrogens and 0 are deuteriums.

In the tables below, the ZeroOcc column contains the number of atoms modelled with zero occupancy, the AltConf column contains the number of residues with at least one atom in alternate conformation and the Trace column contains the number of residues modelled with at most 2 atoms.

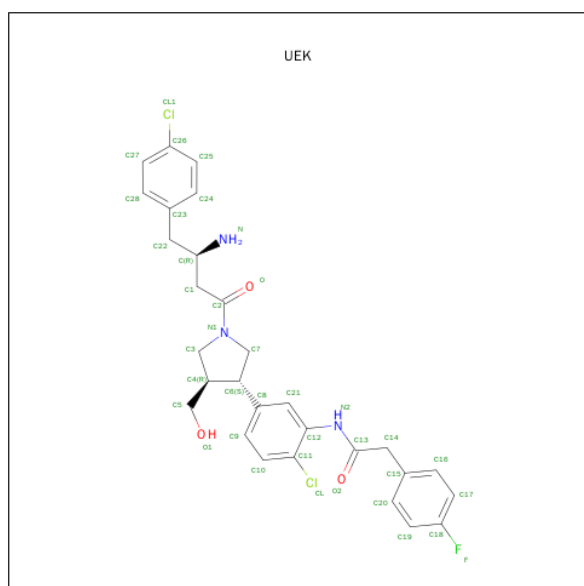
- Molecule 1 is a protein called GLYCYLPEPTIDE N-TETRADECANOYLTRANSFERASE.

Mol	Chain	Residues	Atoms					ZeroOcc	AltConf	Trace
1	A	411	Total	C	N	O	S	0	31	0
			3525	2291	582	635	17			

- Molecule 2 is MAGNESIUM ION (three-letter code: MG) (formula: Mg).

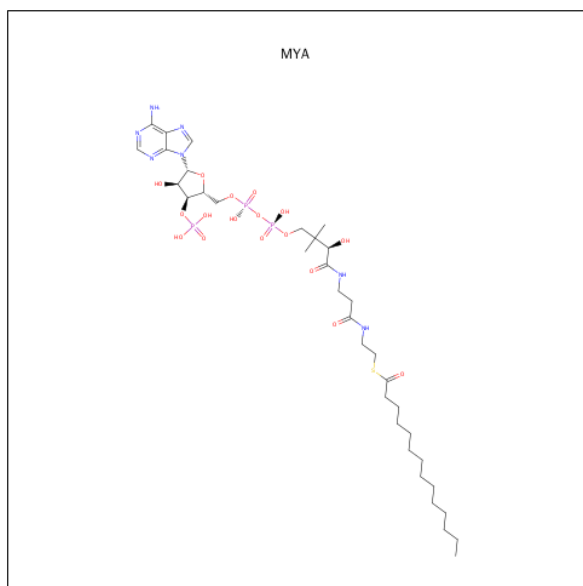
Mol	Chain	Residues	Atoms		ZeroOcc	AltConf
2	A	1	Total	Mg	0	0
			1	1		

- Molecule 3 is N-{5-[(3S,4R)-1-[(3R)-3-AMINO-4-(4-CHLOROPHENYL)BUTANOYL]-4-(HYDROXYMETHYL)PYRROLIDIN-3-YL]-2-CHLOROPHENYL}-2-(4-FLUOROPHENYL)ACETAMIDE (three-letter code: UEK) (formula: C₂₉H₃₀Cl₂FN₃O₃).



Mol	Chain	Residues	Atoms						ZeroOcc	AltConf
3	A	1	Total	C	Cl	F	N	O	0	0
			38	29	2	1	3	3		

- Molecule 4 is TETRADECANOYL-COA (three-letter code: MYA) (formula: $C_{35}H_{62}N_7O_{17}P_3S$).



Mol	Chain	Residues	Atoms						ZeroOcc	AltConf
			Total	C	N	O	P	S		
4	A	1	63	35	7	17	3	1	0	0

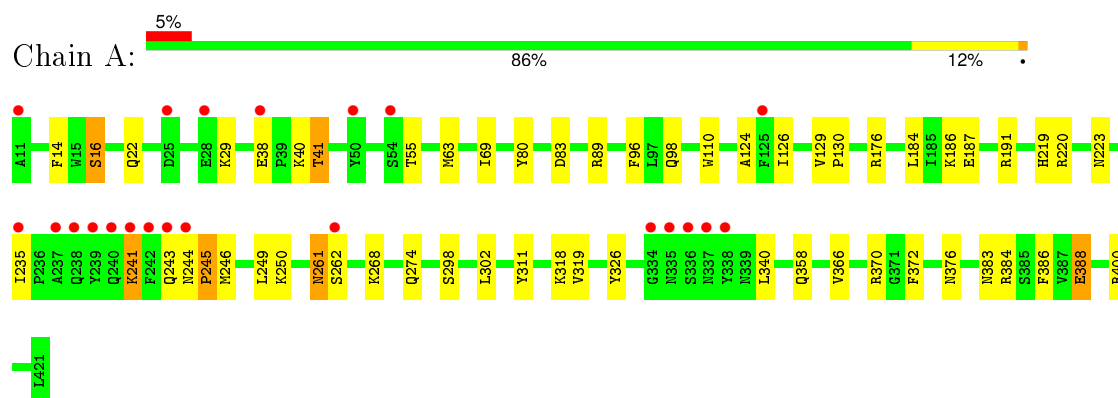
- Molecule 5 is water.

Mol	Chain	Residues	Atoms		ZeroOcc	AltConf
5	A	425	Total	O	0	0
			425	425		

3 Residue-property plots

These plots are drawn for all protein, RNA and DNA chains in the entry. The first graphic for a chain summarises the proportions of errors displayed in the second graphic. The second graphic shows the sequence view annotated by issues in geometry and electron density. Residues are color-coded according to the number of geometric quality criteria for which they contain at least one outlier: green = 0, yellow = 1, orange = 2 and red = 3 or more. A red dot above a residue indicates a poor fit to the electron density ($RSRZ > 2$). Stretches of 2 or more consecutive residues without any outlier are shown as a green connector. Residues present in the sample, but not in the model, are shown in grey.

- Molecule 1: GLYCYLPEPTIDE N-TETRADECANOYLTRANSFERASE



4 Data and refinement statistics

Property	Value	Source
Space group	P 1 21 1	Depositor
Cell constants a, b, c, α , β , γ	48.55Å 92.73Å 53.64Å 90.00° 113.86° 90.00°	Depositor
Resolution (Å)	49.06 – 1.50 22.20 – 1.50	Depositor EDS
% Data completeness (in resolution range)	98.8 (49.06-1.50) 98.8 (22.20-1.50)	Depositor EDS
R_{merge}	0.05	Depositor
R_{sym}	(Not available)	Depositor
$\langle I/\sigma(I) \rangle$ ¹	1.89 (at 1.50Å)	Xtriage
Refinement program	REFMAC 5.8.0049	Depositor
R, R_{free}	0.178 , 0.216 0.178 , 0.216	Depositor DCC
R_{free} test set	3397 reflections (5.22%)	DCC
Wilson B-factor (Å ²)	16.9	Xtriage
Anisotropy	0.329	Xtriage
Bulk solvent k_{sol} (e/Å ³), B_{sol} (Å ²)	0.33 , 42.3	EDS
Estimated twinning fraction	No twinning to report.	Xtriage
L-test for twinning ²	$\langle L \rangle = 0.48$, $\langle L^2 \rangle = 0.31$	Xtriage
Outliers	1 of 68517 reflections (0.001%)	Xtriage
F_o, F_c correlation	0.97	EDS
Total number of atoms	4052	wwPDB-VP
Average B, all atoms (Å ²)	22.0	wwPDB-VP

Xtriage's analysis on translational NCS is as follows: *The largest off-origin peak in the Patterson function is 6.07% of the height of the origin peak. No significant pseudotranslation is detected.*

¹Intensities estimated from amplitudes.

²Theoretical values of $\langle |L| \rangle$, $\langle L^2 \rangle$ for acentric reflections are 0.5, 0.375 respectively for untwinned datasets, and 0.333, 0.2 for perfectly twinned datasets.

5 Model quality

5.1 Standard geometry

Bond lengths and bond angles in the following residue types are not validated in this section: MYA, MG, UEK

The Z score for a bond length (or angle) is the number of standard deviations the observed value is removed from the expected value. A bond length (or angle) with $|Z| > 5$ is considered an outlier worth inspection. RMSZ is the root-mean-square of all Z scores of the bond lengths (or angles).

Mol	Chain	Bond lengths		Bond angles	
		RMSZ	$\# Z > 5$	RMSZ	$\# Z > 5$
1	A	1.32	6/3714 (0.2%)	1.25	15/5047 (0.3%)

Chiral center outliers are detected by calculating the chiral volume of a chiral center and verifying if the center is modelled as a planar moiety or with the opposite hand. A planarity outlier is detected by checking planarity of atoms in a peptide group, atoms in a mainchain group or atoms of a sidechain that are expected to be planar.

Mol	Chain	#Chirality outliers	#Planarity outliers
1	A	0	1

All (6) bond length outliers are listed below:

Mol	Chain	Res	Type	Atoms	Z	Observed(Å)	Ideal(Å)
1	A	326	TYR	CG-CD2	6.74	1.48	1.39
1	A	80	TYR	CG-CD1	6.42	1.47	1.39
1	A	38	GLU	CG-CD	6.11	1.61	1.51
1	A	16	SER	CA-CB	5.72	1.61	1.52
1	A	388	GLU	CD-OE2	5.58	1.31	1.25
1	A	110	TRP	CG-CD1	5.22	1.44	1.36

All (15) bond angle outliers are listed below:

Mol	Chain	Res	Type	Atoms	Z	Observed(°)	Ideal(°)
1	A	89	ARG	NE-CZ-NH2	-14.58	113.01	120.30
1	A	370	ARG	NE-CZ-NH2	-10.38	115.11	120.30
1	A	220	ARG	NE-CZ-NH1	7.88	124.24	120.30
1	A	220	ARG	NE-CZ-NH2	-7.81	116.40	120.30
1	A	38	GLU	OE1-CD-OE2	-7.50	114.30	123.30
1	A	268[A]	LYS	CD-CE-NZ	7.46	128.86	111.70
1	A	268[B]	LYS	CD-CE-NZ	7.46	128.86	111.70

Continued on next page...

Continued from previous page...

Mol	Chain	Res	Type	Atoms	Z	Observed(°)	Ideal(°)
1	A	176	ARG	NE-CZ-NH2	-6.21	117.20	120.30
1	A	89	ARG	NE-CZ-NH1	5.86	123.23	120.30
1	A	96	PHE	CB-CG-CD2	-5.66	116.84	120.80
1	A	41	THR	N-CA-CB	5.63	121.00	110.30
1	A	400	ARG	NE-CZ-NH2	-5.61	117.50	120.30
1	A	372	PHE	CB-CG-CD1	-5.45	116.99	120.80
1	A	80	TYR	CD1-CE1-CZ	-5.19	115.13	119.80
1	A	83	ASP	CB-CG-OD1	5.12	122.91	118.30

There are no chirality outliers.

All (1) planarity outliers are listed below:

Mol	Chain	Res	Type	Group
1	A	261	ASN	Peptide

5.2 Too-close contacts ⓘ

In the following table, the Non-H and H(model) columns list the number of non-hydrogen atoms and hydrogen atoms in the chain respectively. The H(added) column lists the number of hydrogen atoms added and optimized by MolProbity. The Clashes column lists the number of clashes within the asymmetric unit, whereas Symm-Clashes lists symmetry related clashes.

Mol	Chain	Non-H	H(model)	H(added)	Clashes	Symm-Clashes
1	A	3525	0	3531	47	0
2	A	1	0	0	0	0
3	A	38	0	30	2	0
4	A	63	0	58	0	0
5	A	425	0	0	15	0
All	All	4052	0	3619	47	0

The all-atom clashscore is defined as the number of clashes found per 1000 atoms (including hydrogen atoms). The all-atom clashscore for this structure is 6.

All (47) close contacts within the same asymmetric unit are listed below, sorted by their clash magnitude.

Atom-1	Atom-2	Interatomic distance (Å)	Clash overlap (Å)
1:A:63[B]:MET:CE	1:A:69[B]:ILE:HD11	1.39	1.53
1:A:63[B]:MET:CE	1:A:69[B]:ILE:CD1	1.98	1.41
1:A:63[B]:MET:HE3	1:A:69[B]:ILE:CD1	1.62	1.24

Continued on next page...

Continued from previous page...

Atom-1	Atom-2	Interatomic distance (Å)	Clash overlap (Å)
1:A:63[B]:MET:HE1	1:A:69[B]:ILE:CD1	1.64	1.12
1:A:191[B]:ARG:NH1	5:A:2090:HOH:O	1.78	1.00
1:A:63[B]:MET:HE1	1:A:69[B]:ILE:HD13	1.45	0.98
1:A:69[A]:ILE:HD12	5:A:2098:HOH:O	1.65	0.95
1:A:384[A]:ARG:NH1	5:A:2401:HOH:O	1.73	0.91
1:A:63[B]:MET:CE	1:A:69[B]:ILE:HD13	1.98	0.90
1:A:191[B]:ARG:NH1	5:A:2086:HOH:O	2.06	0.87
1:A:63[B]:MET:HE3	1:A:69[B]:ILE:HD11	0.80	0.80
1:A:98[B]:GLN:OE1	5:A:2158:HOH:O	2.01	0.77
1:A:262[B]:SER:HB3	5:A:2314:HOH:O	1.92	0.69
1:A:98[A]:GLN:NE2	5:A:2156:HOH:O	2.26	0.69
1:A:261:ASN:HD21	1:A:358:GLN:HE21	1.39	0.68
1:A:388:GLU:OE1	5:A:2402:HOH:O	2.12	0.68
1:A:41:THR:HB	5:A:2058:HOH:O	1.94	0.68
1:A:246[B]:MET:HE3	1:A:249:LEU:HB3	1.80	0.63
1:A:274:GLN:HE22	1:A:319:VAL:H	1.46	0.63
1:A:16:SER:HA	1:A:22:GLN:HE22	1.62	0.63
1:A:223:ASN:HB2	5:A:2291:HOH:O	1.99	0.62
1:A:191[B]:ARG:CZ	5:A:2086:HOH:O	2.48	0.61
1:A:261:ASN:ND2	1:A:358:GLN:HE21	1.99	0.61
1:A:126:ILE:HG22	1:A:184[A]:LEU:HD22	1.82	0.60
1:A:274:GLN:NE2	1:A:319:VAL:H	1.99	0.59
1:A:40[A]:LYS:HE2	5:A:2051:HOH:O	2.05	0.56
1:A:124:ALA:HB1	1:A:184[A]:LEU:HD11	1.89	0.54
1:A:63[B]:MET:HE1	1:A:69[B]:ILE:HD12	1.80	0.53
1:A:219[A]:HIS:CE1	3:A:1000:UEK:CL	3.02	0.49
1:A:311:TYR:CE1	1:A:366:VAL:HG11	2.48	0.49
1:A:63[B]:MET:HE3	1:A:63[B]:MET:HA	1.95	0.49
1:A:246[A]:MET:HG3	1:A:250:LYS:HD2	1.97	0.47
1:A:187:GLU:O	1:A:191[A]:ARG:HG3	2.15	0.47
1:A:16:SER:HA	1:A:22:GLN:NE2	2.28	0.46
1:A:191[A]:ARG:NH1	5:A:2090:HOH:O	2.48	0.46
1:A:235:ILE:HG21	1:A:245:PRO:HB3	1.98	0.45
1:A:129:VAL:HB	1:A:130[A]:PRO:HD2	1.98	0.45
1:A:376:ASN:HB3	3:A:1000:UEK:CL	2.54	0.45
1:A:244:ASN:OD1	1:A:244:ASN:C	2.56	0.44
1:A:69[A]:ILE:CD1	5:A:2098:HOH:O	2.43	0.42
1:A:383:ASN:HA	1:A:386:PHE:CE2	2.54	0.42
1:A:14:PHE:CE1	1:A:186:LYS:HE3	2.55	0.42
1:A:274:GLN:HE22	1:A:318:LYS:HA	1.85	0.41
1:A:298[B]:SER:OG	1:A:302:LEU:HD12	2.21	0.40

Continued on next page...

Continued from previous page...

Atom-1	Atom-2	Interatomic distance (Å)	Clash overlap (Å)
1:A:191[A]:ARG:NH1	5:A:2086:HOH:O	2.54	0.40

There are no symmetry-related clashes.

5.3 Torsion angles [i](#)

5.3.1 Protein backbone [i](#)

In the following table, the Percentiles column shows the percent Ramachandran outliers of the chain as a percentile score with respect to all X-ray entries followed by that with respect to entries of similar resolution.

The Analysed column shows the number of residues for which the backbone conformation was analysed, and the total number of residues.

Mol	Chain	Analysed	Favoured	Allowed	Outliers	Percentiles
1	A	440/411 (107%)	421 (96%)	18 (4%)	1 (0%)	52 25

All (1) Ramachandran outliers are listed below:

Mol	Chain	Res	Type
1	A	241	LYS

5.3.2 Protein sidechains [i](#)

In the following table, the Percentiles column shows the percent sidechain outliers of the chain as a percentile score with respect to all X-ray entries followed by that with respect to entries of similar resolution.

The Analysed column shows the number of residues for which the sidechain conformation was analysed, and the total number of residues.

Mol	Chain	Analysed	Rotameric	Outliers	Percentiles
1	A	393/362 (109%)	388 (99%)	5 (1%)	76 50

All (5) residues with a non-rotameric sidechain are listed below:

Mol	Chain	Res	Type
1	A	55	THR
1	A	241	LYS

Continued on next page...

Continued from previous page...

Mol	Chain	Res	Type
1	A	243	GLN
1	A	245	PRO
1	A	340	LEU

Some sidechains can be flipped to improve hydrogen bonding and reduce clashes. All (7) such sidechains are listed below:

Mol	Chain	Res	Type
1	A	18	GLN
1	A	22	GLN
1	A	243	GLN
1	A	252	ASN
1	A	261	ASN
1	A	274	GLN
1	A	339	ASN

5.3.3 RNA [i](#)

There are no RNA molecules in this entry.

5.4 Non-standard residues in protein, DNA, RNA chains [i](#)

There are no non-standard protein/DNA/RNA residues in this entry.

5.5 Carbohydrates [i](#)

There are no carbohydrates in this entry.

5.6 Ligand geometry [i](#)

Of 3 ligands modelled in this entry, 1 is monoatomic - leaving 2 for Mogul analysis.

In the following table, the Counts columns list the number of bonds (or angles) for which Mogul statistics could be retrieved, the number of bonds (or angles) that are observed in the model and the number of bonds (or angles) that are defined in the chemical component dictionary. The Link column lists molecule types, if any, to which the group is linked. The Z score for a bond length (or angle) is the number of standard deviations the observed value is removed from the expected value. A bond length (or angle) with $|Z| > 2$ is considered an outlier worth inspection. RMSZ is the root-mean-square of all Z scores of the bond lengths (or angles).

Mol	Type	Chain	Res	Link	Bond lengths			Bond angles		
					Counts	RMSZ	# Z > 2	Counts	RMSZ	# Z > 2
3	UEK	A	1000	-	40,41,41	1.63	6 (15%)	47,57,57	2.50	13 (27%)
4	MYA	A	1001	2	53,65,65	1.17	5 (9%)	65,91,91	1.42	9 (13%)

In the following table, the Chirals column lists the number of chiral outliers, the number of chiral centers analysed, the number of these observed in the model and the number defined in the chemical component dictionary. Similar counts are reported in the Torsion and Rings columns. '-' means no outliers of that kind were identified.

Mol	Type	Chain	Res	Link	Chirals	Torsions	Rings
3	UEK	A	1000	-	-	0/26/38/38	0/4/4/4
4	MYA	A	1001	2	-	0/59/80/80	0/3/3/3

All (11) bond length outliers are listed below:

Mol	Chain	Res	Type	Atoms	Z	Observed(Å)	Ideal(Å)
4	A	1001	MYA	P1A-O2A	-2.74	1.41	1.51
4	A	1001	MYA	C3X-C4X	-2.51	1.45	1.52
4	A	1001	MYA	P2A-O4A	-2.13	1.43	1.51
4	A	1001	MYA	C2-S1	2.42	1.84	1.81
3	A	1000	UEK	C9-C10	2.45	1.43	1.38
4	A	1001	MYA	O10-C10	2.53	1.47	1.42
3	A	1000	UEK	C16-C17	2.70	1.43	1.38
3	A	1000	UEK	C19-C20	2.84	1.43	1.38
3	A	1000	UEK	C11-CL	3.05	1.81	1.73
3	A	1000	UEK	C5-C4	3.44	1.59	1.52
3	A	1000	UEK	C9-C8	4.08	1.45	1.39

All (22) bond angle outliers are listed below:

Mol	Chain	Res	Type	Atoms	Z	Observed(°)	Ideal(°)
3	A	1000	UEK	C16-C17-C18	-7.07	110.71	118.35
3	A	1000	UEK	C19-C20-C15	-4.68	114.63	121.04
3	A	1000	UEK	O-C2-C1	-4.25	114.05	122.22
3	A	1000	UEK	C14-C15-C20	-4.12	114.68	120.86
4	A	1001	MYA	N3A-C2A-N1A	-4.00	125.83	128.89
3	A	1000	UEK	F-C18-C17	-3.97	111.89	118.52
4	A	1001	MYA	C4A-C5A-N7A	-3.54	106.22	109.48
3	A	1000	UEK	C9-C8-C6	-3.52	114.03	121.08
3	A	1000	UEK	C7-C6-C8	-2.76	110.87	114.98
3	A	1000	UEK	O2-C13-C14	-2.61	114.59	121.88
4	A	1001	MYA	C4M-C3M-C2M	-2.39	107.08	113.97
4	A	1001	MYA	C3-C2-S1	-2.06	106.59	114.21

Continued on next page...

Continued from previous page...

Mol	Chain	Res	Type	Atoms	Z	Observed(°)	Ideal(°)
4	A	1001	MYA	O5A-P2A-O4A	2.12	124.04	112.53
4	A	1001	MYA	O7A-P3X-O8A	2.31	116.17	107.38
3	A	1000	UEK	O2-C13-N2	2.35	127.93	123.72
4	A	1001	MYA	O2X-C2X-C3X	2.56	118.55	111.16
4	A	1001	MYA	C2-S1-C2M	3.12	104.91	100.40
4	A	1001	MYA	O2M-C2M-C3M	3.33	115.14	109.05
3	A	1000	UEK	C1-C2-N1	3.72	124.66	118.63
3	A	1000	UEK	C21-C8-C6	3.90	127.45	120.18
3	A	1000	UEK	C16-C15-C20	4.79	125.80	118.13
3	A	1000	UEK	C17-C18-C19	6.64	132.42	122.87

There are no chirality outliers.

There are no torsion outliers.

There are no ring outliers.

1 monomer is involved in 2 short contacts:

Mol	Chain	Res	Type	Clashes	Symm-Clashes
3	A	1000	UEK	2	0

5.7 Other polymers [i](#)

There are no such residues in this entry.

5.8 Polymer linkage issues [i](#)

There are no chain breaks in this entry.

6 Fit of model and data

6.1 Protein, DNA and RNA chains

In the following table, the column labelled ‘#RSRZ> 2’ contains the number (and percentage) of RSRZ outliers, followed by percent RSRZ outliers for the chain as percentile scores relative to all X-ray entries and entries of similar resolution. The OWAB column contains the minimum, median, 95th percentile and maximum values of the occupancy-weighted average B-factor per residue. The column labelled ‘Q< 0.9’ lists the number of (and percentage) of residues with an average occupancy less than 0.9.

Mol	Chain	Analysed	<RSRZ>	#RSRZ>2		OWAB(Å ²)	Q<0.9
1	A	411/411 (100%)	0.28	22 (5%)	29 30	9, 17, 41, 84	0

All (22) RSRZ outliers are listed below:

Mol	Chain	Res	Type	RSRZ
1	A	242	PHE	6.3
1	A	338	TYR	5.5
1	A	240	GLN	5.4
1	A	337	ASN	4.8
1	A	336	SER	4.7
1	A	50[A]	TYR	4.3
1	A	11	ALA	4.2
1	A	25[A]	ASP	4.0
1	A	237	ALA	4.0
1	A	241	LYS	3.9
1	A	238	GLN	3.6
1	A	334	GLY	3.6
1	A	243	GLN	3.0
1	A	38	GLU	2.8
1	A	244	ASN	2.8
1	A	28	GLU	2.8
1	A	239	TYR	2.6
1	A	125	PHE	2.4
1	A	54	SER	2.3
1	A	335	ASN	2.2
1	A	262[A]	SER	2.1
1	A	235	ILE	2.0

6.2 Non-standard residues in protein, DNA, RNA chains

There are no non-standard protein/DNA/RNA residues in this entry.

6.3 Carbohydrates [i](#)

There are no carbohydrates in this entry.

6.4 Ligands [i](#)

In the following table, the Atoms column lists the number of modelled atoms in the group and the number defined in the chemical component dictionary. LLDF column lists the quality of electron density of the group with respect to its neighbouring residues in protein, DNA or RNA chains. The B-factors column lists the minimum, median, 95th percentile and maximum values of B factors of atoms in the group. The column labelled 'Q< 0.9' lists the number of atoms with occupancy less than 0.9.

Mol	Type	Chain	Res	Atoms	RSCC	RSR	LLDF	B-factors(\AA^2)	Q<0.9
2	MG	A	999	1/1	0.99	0.07	-0.61	25,25,25,25	0
3	UEK	A	1000	38/38	0.96	0.07	-0.75	9,12,19,41	0
4	MYA	A	1001	63/63	0.97	0.07	-0.85	9,14,18,21	0

6.5 Other polymers [i](#)

There are no such residues in this entry.