



# Full wwPDB X-ray Structure Validation Report ⓘ

Jan 31, 2016 – 06:55 PM GMT

PDB ID : 1D7U  
Title : Crystal structure of the complex of 2,2-dialkylglycine decarboxylase with LCS  
Authors : Malashkevich, V.N.; Toney, M.D.; Strop, P.; Keller, J.; Jansonius, J.N.  
Deposited on : 1999-10-19  
Resolution : 1.95 Å(reported)

This is a Full wwPDB X-ray Structure Validation Report for a publicly released PDB entry.  
We welcome your comments at [validation@mail.wwpdb.org](mailto:validation@mail.wwpdb.org)  
A user guide is available at  
<http://wwpdb.org/validation/2016/XrayValidationReportHelp>  
with specific help available everywhere you see the ⓘ symbol.

---

The following versions of software and data (see [references ⓘ](#)) were used in the production of this report:

MolProbity : 4.02b-467  
Mogul : 1.7 (RC4), CSD as536be (2015)  
Xtriage (Phenix) : **NOT EXECUTED**  
EDS : **NOT EXECUTED**  
Percentile statistics : 20151230.v01 (using entries in the PDB archive December 30th 2015)  
Ideal geometry (proteins) : Engh & Huber (2001)  
Ideal geometry (DNA, RNA) : Parkinson et al. (1996)  
Validation Pipeline (wwPDB-VP) : trunk26865

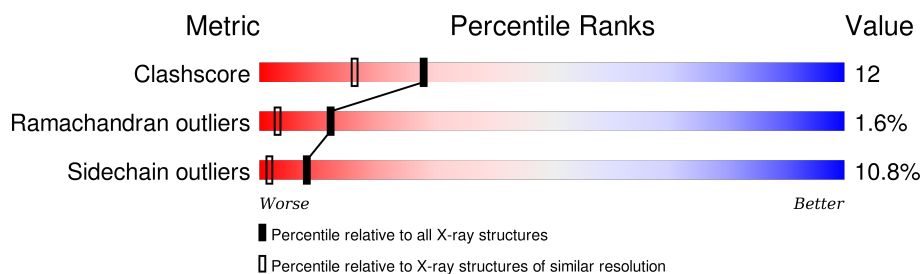
# 1 Overall quality at a glance

The following experimental techniques were used to determine the structure:

*X-RAY DIFFRACTION*

The reported resolution of this entry is 1.95 Å.

Percentile scores (ranging between 0-100) for global validation metrics of the entry are shown in the following graphic. The table shows the number of entries on which the scores are based.



Metric	Whole archive (#Entries)	Similar resolution (#Entries, resolution range(Å))
Clashscore	102246	1953 (1.96-1.96)
Ramachandran outliers	100387	1936 (1.96-1.96)
Sidechain outliers	100360	1936 (1.96-1.96)

The table below summarises the geometric issues observed across the polymeric chains and their fit to the electron density. The red, orange, yellow and green segments on the lower bar indicate the fraction of residues that contain outliers for  $\geq 3$ , 2, 1 and 0 types of geometric quality criteria. A grey segment represents the fraction of residues that are not modelled. The numeric value for each fraction is indicated below the corresponding segment, with a dot representing fractions  $\leq 5\%$ . The upper red bar (where present) indicates the fraction of residues that have poor fit to the electron density. The numeric value is given above the bar.

Note EDS was not executed.

Mol	Chain	Length	Quality of chain
1	A	433	

## 2 Entry composition

There are 5 unique types of molecules in this entry. The entry contains 3418 atoms, of which 0 are hydrogens and 0 are deuteriums.

In the tables below, the ZeroOcc column contains the number of atoms modelled with zero occupancy, the AltConf column contains the number of residues with at least one atom in alternate conformation and the Trace column contains the number of residues modelled with at most 2 atoms.

- Molecule 1 is a protein called PROTEIN (2,2-DIALKYLGLYCINE DECARBOXYLASE (PYRUVATE)).

Mol	Chain	Residues	Atoms					ZeroOcc	AltConf	Trace
1	A	431	Total	C	N	O	S	0	0	0
			3246	2047	575	606	18			

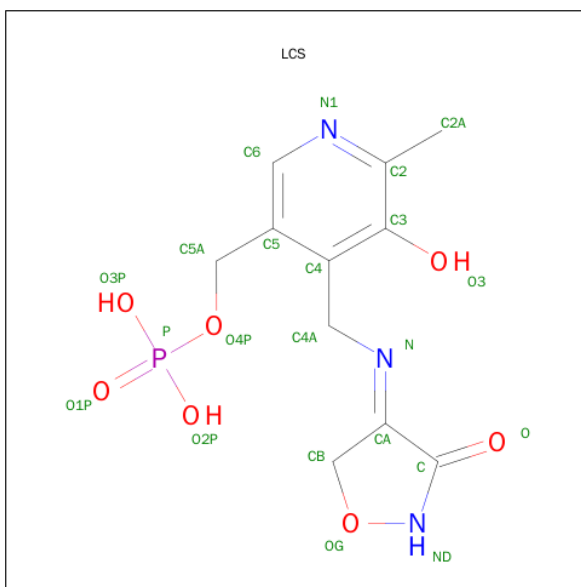
- Molecule 2 is SODIUM ION (three-letter code: NA) (formula: Na).

Mol	Chain	Residues	Atoms		ZeroOcc	AltConf
2	A	1	Total	Na	0	0
			1	1		

- Molecule 3 is POTASSIUM ION (three-letter code: K) (formula: K).

Mol	Chain	Residues	Atoms		ZeroOcc	AltConf
3	A	1	Total	K	0	0
			1	1		

- Molecule 4 is [5-HYDROXY-6-METHYL-4-({[(4E)-3-OXO-1,2-OXAZOLIDIN-4-YLIDENE] AMINO} METHYL)PYRIDIN-3-YL] METHYL DIHYDROGEN PHOSPHATE (three-letter code: LCS) (formula: C<sub>11</sub>H<sub>14</sub>N<sub>3</sub>O<sub>7</sub>P).



Mol	Chain	Residues	Atoms					ZeroOcc	AltConf
4	A	1	Total	C	N	O	P	0	0
			22	11	3	7	1		

- Molecule 5 is water.

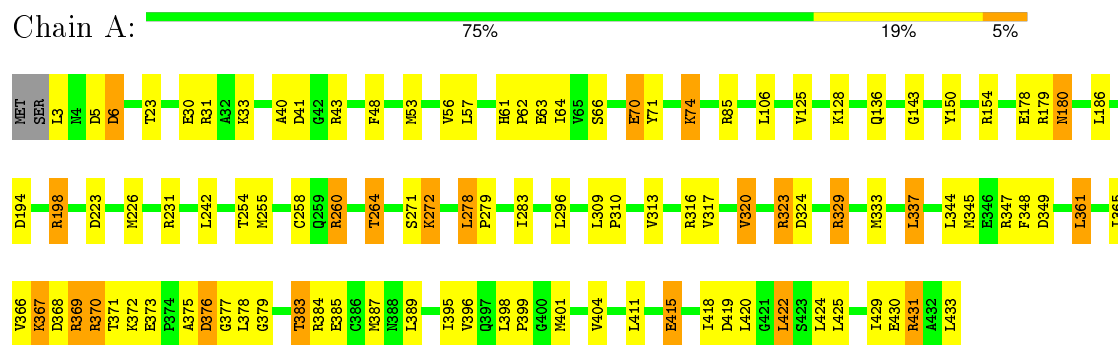
Mol	Chain	Residues	Atoms		ZeroOcc	AltConf
5	A	148	Total	O	0	0
			148	148		

### 3 Residue-property plots

These plots are drawn for all protein, RNA and DNA chains in the entry. The first graphic for a chain summarises the proportions of errors displayed in the second graphic. The second graphic shows the sequence view annotated by issues in geometry and electron density. Residues are color-coded according to the number of geometric quality criteria for which they contain at least one outlier: green = 0, yellow = 1, orange = 2 and red = 3 or more. A red dot above a residue indicates a poor fit to the electron density ( $RSRZ > 2$ ). Stretches of 2 or more consecutive residues without any outlier are shown as a green connector. Residues present in the sample, but not in the model, are shown in grey.

Note EDS was not executed.

- Molecule 1: PROTEIN (2,2-DIALKYLGLYCINE DECARBOXYLASE (PYRUVATE))



## 4 Data and refinement statistics

Xtriage (Phenix) and EDS were not executed - this section will therefore be incomplete.

Property	Value	Source
Space group	P 64 2 2	Depositor
Cell constants a, b, c, $\alpha$ , $\beta$ , $\gamma$	153.23Å 153.23Å 86.48Å 90.00° 90.00° 120.00°	Depositor
Resolution (Å)	10.00 – 1.95	Depositor
% Data completeness (in resolution range)	95.6 (10.00-1.95)	Depositor
$R_{merge}$	0.06	Depositor
$R_{sym}$	(Not available)	Depositor
Refinement program	TNT	Depositor
R, $R_{free}$	0.193 , (Not available)	Depositor
Estimated twinning fraction	No twinning to report.	Xtriage
Total number of atoms	3418	wwPDB-VP
Average B, all atoms (Å <sup>2</sup> )	35.0	wwPDB-VP

## 5 Model quality [i](#)

### 5.1 Standard geometry [i](#)

Bond lengths and bond angles in the following residue types are not validated in this section: NA, K, LCS

The Z score for a bond length (or angle) is the number of standard deviations the observed value is removed from the expected value. A bond length (or angle) with  $|Z| > 5$  is considered an outlier worth inspection. RMSZ is the root-mean-square of all Z scores of the bond lengths (or angles).

Mol	Chain	Bond lengths		Bond angles	
		RMSZ	$\# Z  > 5$	RMSZ	$\# Z  > 5$
1	A	0.67	0/3302	0.90	1/4468 (0.0%)

There are no bond length outliers.

All (1) bond angle outliers are listed below:

Mol	Chain	Res	Type	Atoms	Z	Observed( $^{\circ}$ )	Ideal( $^{\circ}$ )
1	A	419	ASP	CB-CG-OD1	5.36	123.12	118.30

There are no chirality outliers.

There are no planarity outliers.

### 5.2 Too-close contacts [i](#)

In the following table, the Non-H and H(model) columns list the number of non-hydrogen atoms and hydrogen atoms in the chain respectively. The H(added) column lists the number of hydrogen atoms added and optimized by MolProbity. The Clashes column lists the number of clashes within the asymmetric unit, whereas Symm-Clashes lists symmetry related clashes.

Mol	Chain	Non-H	H(model)	H(added)	Clashes	Symm-Clashes
1	A	3246	0	3277	77	0
2	A	1	0	0	0	0
3	A	1	0	0	0	0
4	A	22	0	12	0	0
5	A	148	0	0	4	0
All	All	3418	0	3289	77	0

The all-atom clashscore is defined as the number of clashes found per 1000 atoms (including hydrogen atoms). The all-atom clashscore for this structure is 12.

All (77) close contacts within the same asymmetric unit are listed below, sorted by their clash magnitude.

Atom-1	Atom-2	Interatomic distance (Å)	Clash overlap (Å)
1:A:278:LEU:HD13	1:A:279:PRO:HD2	1.49	0.94
1:A:278:LEU:HD13	1:A:279:PRO:CD	2.04	0.86
1:A:180:ASN:HD22	1:A:180:ASN:N	1.76	0.83
1:A:366:VAL:HG21	1:A:372:LYS:HA	1.64	0.78
1:A:329:ARG:HH12	1:A:333:MET:CE	1.97	0.77
1:A:316:ARG:O	1:A:320:VAL:HG12	1.84	0.77
1:A:398:LEU:HB3	1:A:399:PRO:HD2	1.70	0.73
1:A:329:ARG:HH12	1:A:333:MET:HE3	1.53	0.72
1:A:278:LEU:HD13	1:A:279:PRO:N	2.07	0.70
1:A:61:HIS:NE2	1:A:63:GLU:HG3	2.08	0.69
1:A:370:ARG:N	1:A:370:ARG:HD3	2.08	0.69
1:A:418:ILE:O	1:A:422:LEU:HD22	1.93	0.69
1:A:365:ILE:HG22	1:A:375:ALA:HB3	1.76	0.68
1:A:61:HIS:CD2	1:A:63:GLU:HG3	2.30	0.66
1:A:254:THR:HG23	1:A:260:ARG:HH21	1.59	0.66
1:A:61:HIS:CD2	1:A:62:PRO:HD2	2.33	0.63
1:A:345:MET:O	1:A:369:ARG:NH2	2.32	0.61
1:A:31:ARG:NH1	1:A:33:LYS:HE3	2.16	0.61
1:A:384:ARG:NH2	1:A:385:GLU:OE2	2.30	0.61
1:A:61:HIS:HD2	1:A:63:GLU:H	1.49	0.59
1:A:313:VAL:O	1:A:317:VAL:HG23	2.02	0.59
1:A:30:GLU:HG3	1:A:40:ALA:HA	1.82	0.59
1:A:376:ASP:O	1:A:378:LEU:N	2.34	0.59
1:A:396:VAL:HG23	1:A:398:LEU:CD1	2.36	0.56
1:A:323:ARG:HG3	1:A:324:ASP:OD1	2.06	0.56
1:A:61:HIS:HB3	1:A:64:ILE:HG12	1.88	0.56
1:A:309:LEU:HD12	1:A:309:LEU:O	2.07	0.55
1:A:31:ARG:HH12	1:A:33:LYS:HE3	1.71	0.55
1:A:396:VAL:HG23	1:A:398:LEU:HD12	1.89	0.55
1:A:43:ARG:NH2	1:A:387:MET:O	2.41	0.54
1:A:272:LYS:NZ	5:A:674:HOH:O	2.34	0.54
1:A:179:ARG:C	1:A:180:ASN:HD22	2.12	0.53
1:A:254:THR:HG23	1:A:260:ARG:NH2	2.24	0.52
1:A:136:GLN:OE1	1:A:136:GLN:N	2.42	0.52
1:A:348:PHE:O	1:A:369:ARG:NH2	2.42	0.52
1:A:180:ASN:N	1:A:180:ASN:ND2	2.48	0.52
1:A:337:LEU:HD13	1:A:361:LEU:HD23	1.91	0.51
1:A:194:ASP:OD2	1:A:198:ARG:NH1	2.44	0.51
1:A:264:THR:HG22	5:A:559:HOH:O	2.10	0.51
1:A:368:ASP:C	1:A:370:ARG:H	2.14	0.50

*Continued on next page...*



*Continued from previous page...*

Atom-1	Atom-2	Interatomic distance (Å)	Clash overlap (Å)
1:A:368:ASP:O	1:A:372:LYS:N	2.40	0.50
1:A:57:LEU:HD12	1:A:64:ILE:HD11	1.94	0.49
1:A:379:GLY:O	1:A:383:THR:OG1	2.30	0.49
1:A:71:TYR:HB2	1:A:309:LEU:HD13	1.94	0.49
1:A:329:ARG:HH11	1:A:329:ARG:HG3	1.77	0.48
1:A:395:ILE:HA	1:A:404:VAL:O	2.13	0.48
1:A:61:HIS:CD2	1:A:63:GLU:H	2.29	0.48
1:A:425:LEU:O	1:A:429:ILE:HG13	2.13	0.48
1:A:3:LEU:HG	1:A:41:ASP:OD1	2.14	0.48
1:A:106:LEU:HB3	1:A:283:ILE:HG12	1.97	0.46
1:A:309:LEU:HB3	1:A:310:PRO:HD3	1.98	0.46
1:A:370:ARG:N	1:A:370:ARG:CD	2.75	0.46
1:A:61:HIS:HB3	1:A:64:ILE:CG1	2.45	0.46
1:A:56:VAL:HG22	1:A:411:LEU:HG	1.97	0.46
1:A:368:ASP:OD1	1:A:370:ARG:HB2	2.15	0.46
1:A:5:ASP:O	1:A:6:ASP:C	2.53	0.46
1:A:329:ARG:HG3	1:A:329:ARG:NH1	2.31	0.45
1:A:150:TYR:CE2	1:A:154:ARG:CZ	3.00	0.45
1:A:367:LYS:HD2	1:A:367:LYS:HA	1.69	0.45
1:A:61:HIS:CG	1:A:62:PRO:HD2	2.52	0.45
1:A:242:LEU:HD23	1:A:258:CYS:HB3	1.98	0.44
1:A:415:GLU:H	1:A:415:GLU:HG2	1.51	0.44
1:A:371:THR:O	1:A:372:LYS:HB2	2.18	0.44
1:A:323:ARG:HG3	1:A:324:ASP:N	2.33	0.43
1:A:431:ARG:HB2	1:A:431:ARG:HE	1.52	0.43
1:A:3:LEU:HA	1:A:41:ASP:OD1	2.18	0.43
1:A:366:VAL:C	1:A:375:ALA:HB2	2.39	0.43
1:A:385:GLU:O	1:A:389:LEU:HG	2.20	0.41
1:A:70:GLU:O	1:A:74:LYS:HB3	2.20	0.41
1:A:61:HIS:HA	1:A:62:PRO:HD3	1.80	0.41
1:A:309:LEU:C	1:A:309:LEU:HD12	2.41	0.41
1:A:344:LEU:HA	1:A:344:LEU:HD23	1.94	0.41
1:A:56:VAL:CG2	1:A:411:LEU:HG	2.50	0.41
1:A:278:LEU:CD1	1:A:279:PRO:HD2	2.36	0.41
1:A:128:LYS:NZ	5:A:588:HOH:O	2.51	0.41
1:A:85:ARG:HG2	5:A:515:HOH:O	2.21	0.41
1:A:420:LEU:O	1:A:424:LEU:HG	2.22	0.40

There are no symmetry-related clashes.

## 5.3 Torsion angles [i](#)

### 5.3.1 Protein backbone [i](#)

In the following table, the Percentiles column shows the percent Ramachandran outliers of the chain as a percentile score with respect to all X-ray entries followed by that with respect to entries of similar resolution.

The Analysed column shows the number of residues for which the backbone conformation was analysed, and the total number of residues.

Mol	Chain	Analysed	Favoured	Allowed	Outliers	Percentiles
1	A	429/433 (99%)	408 (95%)	14 (3%)	7 (2%)	12 3

All (7) Ramachandran outliers are listed below:

Mol	Chain	Res	Type
1	A	143	GLY
1	A	369	ARG
1	A	271	SER
1	A	272	LYS
1	A	6	ASP
1	A	70	GLU
1	A	377	GLY

### 5.3.2 Protein sidechains [i](#)

In the following table, the Percentiles column shows the percent sidechain outliers of the chain as a percentile score with respect to all X-ray entries followed by that with respect to entries of similar resolution.

The Analysed column shows the number of residues for which the sidechain conformation was analysed, and the total number of residues.

Mol	Chain	Analysed	Rotameric	Outliers	Percentiles
1	A	333/335 (99%)	297 (89%)	36 (11%)	8 2

All (36) residues with a non-rotameric sidechain are listed below:

Mol	Chain	Res	Type
1	A	23	THR
1	A	48	PHE
1	A	53	MET
1	A	66	SER

*Continued on next page...*

*Continued from previous page...*

Mol	Chain	Res	Type
1	A	74	LYS
1	A	125	VAL
1	A	178	GLU
1	A	180	ASN
1	A	186	LEU
1	A	198	ARG
1	A	223	ASP
1	A	226	MET
1	A	231	ARG
1	A	255	MET
1	A	260	ARG
1	A	264	THR
1	A	278	LEU
1	A	296	LEU
1	A	320	VAL
1	A	323	ARG
1	A	329	ARG
1	A	337	LEU
1	A	347	ARG
1	A	349	ASP
1	A	361	LEU
1	A	367	LYS
1	A	370	ARG
1	A	373	GLU
1	A	376	ASP
1	A	383	THR
1	A	401	MET
1	A	415	GLU
1	A	422	LEU
1	A	430	GLU
1	A	431	ARG
1	A	433	LEU

Some sidechains can be flipped to improve hydrogen bonding and reduce clashes. All (3) such sidechains are listed below:

Mol	Chain	Res	Type
1	A	61	HIS
1	A	180	ASN
1	A	397	GLN

### 5.3.3 RNA ⓘ

There are no RNA molecules in this entry.

## 5.4 Non-standard residues in protein, DNA, RNA chains ⓘ

There are no non-standard protein/DNA/RNA residues in this entry.

## 5.5 Carbohydrates ⓘ

There are no carbohydrates in this entry.

## 5.6 Ligand geometry ⓘ

Of 3 ligands modelled in this entry, 2 are monoatomic - leaving 1 for Mogul analysis.

In the following table, the Counts columns list the number of bonds (or angles) for which Mogul statistics could be retrieved, the number of bonds (or angles) that are observed in the model and the number of bonds (or angles) that are defined in the chemical component dictionary. The Link column lists molecule types, if any, to which the group is linked. The Z score for a bond length (or angle) is the number of standard deviations the observed value is removed from the expected value. A bond length (or angle) with  $|Z| > 2$  is considered an outlier worth inspection. RMSZ is the root-mean-square of all Z scores of the bond lengths (or angles).

Mol	Type	Chain	Res	Link	Bond lengths			Bond angles		
					Counts	RMSZ	# $ Z  > 2$	Counts	RMSZ	# $ Z  > 2$
4	LCS	A	500	-	22,23,23	3.97	8 (36%)	24,33,33	2.53	9 (37%)

In the following table, the Chirals column lists the number of chiral outliers, the number of chiral centers analysed, the number of these observed in the model and the number defined in the chemical component dictionary. Similar counts are reported in the Torsion and Rings columns. '-' means no outliers of that kind were identified.

Mol	Type	Chain	Res	Link	Chirals	Torsions	Rings
4	LCS	A	500	-	-	1/9/21/21	0/1/2/2

All (8) bond length outliers are listed below:

Mol	Chain	Res	Type	Atoms	Z	Observed(Å)	Ideal(Å)
4	A	500	LCS	C4A-N	-12.94	1.27	1.46
4	A	500	LCS	CB-CA	-7.85	1.39	1.50
4	A	500	LCS	C-CA	-5.76	1.38	1.50
4	A	500	LCS	C4A-C4	-4.36	1.43	1.51

*Continued on next page...*

*Continued from previous page...*

Mol	Chain	Res	Type	Atoms	Z	Observed(Å)	Ideal(Å)
4	A	500	LCS	OG-CB	-4.09	1.37	1.44
4	A	500	LCS	C-ND	-3.94	1.30	1.35
4	A	500	LCS	C3-C2	2.54	1.42	1.40
4	A	500	LCS	O-C	3.47	1.30	1.23

All (9) bond angle outliers are listed below:

Mol	Chain	Res	Type	Atoms	Z	Observed(°)	Ideal(°)
4	A	500	LCS	O-C-ND	-6.89	115.47	126.16
4	A	500	LCS	C5-C6-N1	-3.59	117.64	123.86
4	A	500	LCS	CB-CA-N	-2.37	121.64	128.98
4	A	500	LCS	C2A-C2-C3	2.07	123.53	121.04
4	A	500	LCS	O3-C3-C4	2.14	124.49	118.11
4	A	500	LCS	C6-N1-C2	2.58	124.55	119.28
4	A	500	LCS	O4P-C5A-C5	3.84	115.34	108.99
4	A	500	LCS	O-C-CA	4.30	137.50	121.80
4	A	500	LCS	C6-C5-C4	5.36	122.09	118.09

There are no chirality outliers.

All (1) torsion outliers are listed below:

Mol	Chain	Res	Type	Atoms
4	A	500	LCS	C5-C4-C4A-N

There are no ring outliers.

No monomer is involved in short contacts.

## 5.7 Other polymers [i](#)

There are no such residues in this entry.

## 5.8 Polymer linkage issues [i](#)

There are no chain breaks in this entry.

## 6 Fit of model and data [i](#)

### 6.1 Protein, DNA and RNA chains [i](#)

EDS was not executed - this section will therefore be empty.

### 6.2 Non-standard residues in protein, DNA, RNA chains [i](#)

EDS was not executed - this section will therefore be empty.

### 6.3 Carbohydrates [i](#)

EDS was not executed - this section will therefore be empty.

### 6.4 Ligands [i](#)

EDS was not executed - this section will therefore be empty.

### 6.5 Other polymers [i](#)

EDS was not executed - this section will therefore be empty.