



# Full wwPDB X-ray Structure Validation Report ⓘ

Feb 1, 2016 – 08:15 AM GMT

PDB ID : 3DUF  
Title : Snapshots of catalysis in the E1 subunit of the pyruvate dehydrogenase multi-enzyme complex  
Authors : Pei, X.Y.; Titman, C.M.; Frank, R.A.W.; Leeper, F.J.; Luisi, B.F.  
Deposited on : 2008-07-17  
Resolution : 2.50 Å(reported)

This is a Full wwPDB X-ray Structure Validation Report for a publicly released PDB entry.  
We welcome your comments at [validation@mail.wwpdb.org](mailto:validation@mail.wwpdb.org)  
A user guide is available at  
<http://wwpdb.org/validation/2016/XrayValidationReportHelp>  
with specific help available everywhere you see the ⓘ symbol.

---

The following versions of software and data (see [references ⓘ](#)) were used in the production of this report:

MolProbity : 4.02b-467  
Mogul : 1.7 (RC4), CSD as536be (2015)  
Xtriage (Phenix) : 1.9-1692  
EDS : rb-20026688  
Percentile statistics : 20151230.v01 (using entries in the PDB archive December 30th 2015)  
Refmac : 5.8.0135  
CCP4 : 6.5.0  
Ideal geometry (proteins) : Engh & Huber (2001)  
Ideal geometry (DNA, RNA) : Parkinson et al. (1996)  
Validation Pipeline (wwPDB-VP) : trunk26865

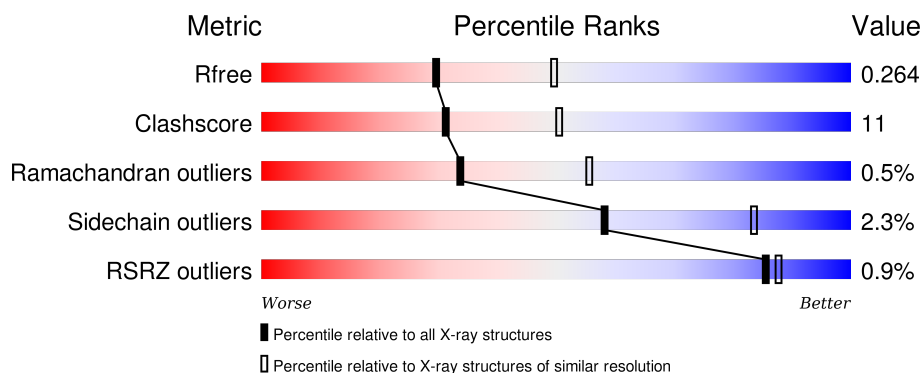
# 1 Overall quality at a glance

The following experimental techniques were used to determine the structure:

## *X-RAY DIFFRACTION*


The reported resolution of this entry is 2.50 Å.

Percentile scores (ranging between 0-100) for global validation metrics of the entry are shown in the following graphic. The table shows the number of entries on which the scores are based.








Metric	Whole archive (#Entries)	Similar resolution (#Entries, resolution range(Å))
$R_{free}$	91344	3553 (2.50-2.50)
Clashscore	102246	4242 (2.50-2.50)
Ramachandran outliers	100387	4156 (2.50-2.50)
Sidechain outliers	100360	4158 (2.50-2.50)
RSRZ outliers	91569	3562 (2.50-2.50)

The table below summarises the geometric issues observed across the polymeric chains and their fit to the electron density. The red, orange, yellow and green segments on the lower bar indicate the fraction of residues that contain outliers for  $\geq 3$ , 2, 1 and 0 types of geometric quality criteria. A grey segment represents the fraction of residues that are not modelled. The numeric value for each fraction is indicated below the corresponding segment, with a dot representing fractions  $\leq 5\%$ . The upper red bar (where present) indicates the fraction of residues that have poor fit to the electron density. The numeric value is given above the bar.

Mol	Chain	Length	Quality of chain
1	A	369	 82% 16% ..
1	C	369	 81% 17% ..
1	E	369	 75% 22% ..
1	G	369	 75% 22% ..
2	B	325	 81% 18% .

*Continued on next page...*

*Continued from previous page...*

Mol	Chain	Length	Quality of chain
2	D	325	
2	F	325	
2	H	325	
3	I	428	
3	J	428	

The following table lists non-polymeric compounds, carbohydrate monomers and non-standard residues in protein, DNA, RNA chains that are outliers for geometric or electron-density-fit criteria:

Mol	Type	Chain	Res	Chirality	Geometry	Clashes	Electron density
4	MG	D	1326	-	-	-	X

## 2 Entry composition

There are 7 unique types of molecules in this entry. The entry contains 22480 atoms, of which 0 are hydrogens and 0 are deuteriums.

In the tables below, the ZeroOcc column contains the number of atoms modelled with zero occupancy, the AltConf column contains the number of residues with at least one atom in alternate conformation and the Trace column contains the number of residues modelled with at most 2 atoms.

- Molecule 1 is a protein called Pyruvate dehydrogenase E1 component subunit alpha.

Mol	Chain	Residues	Atoms					ZeroOcc	AltConf	Trace
1	A	365	Total	C	N	O	S	0	0	0
			2866	1832	488	538	8			
1	C	365	Total	C	N	O	S	0	0	0
			2845	1818	485	534	8			
1	E	365	Total	C	N	O	S	0	0	0
			2868	1832	488	540	8			
1	G	365	Total	C	N	O	S	0	0	0
			2881	1843	489	541	8			

- Molecule 2 is a protein called Pyruvate dehydrogenase E1 component subunit beta.

Mol	Chain	Residues	Atoms					ZeroOcc	AltConf	Trace
2	B	324	Total	C	N	O	S	0	0	0
			2488	1586	424	470	8			
2	D	324	Total	C	N	O	S	0	0	0
			2488	1586	424	470	8			
2	F	324	Total	C	N	O	S	0	0	0
			2486	1583	424	471	8			
2	H	324	Total	C	N	O	S	0	0	0
			2488	1586	424	470	8			

- Molecule 3 is a protein called Dihydrolipoyllysine-residue acetyltransferase component of pyruvate dehydrogenase complex.

Mol	Chain	Residues	Atoms					ZeroOcc	AltConf	Trace
3	I	38	Total	C	N	O	S	0	0	0
			277	168	59	49	1			
3	J	36	Total	C	N	O	S	0	0	0
			263	160	51	51	1			

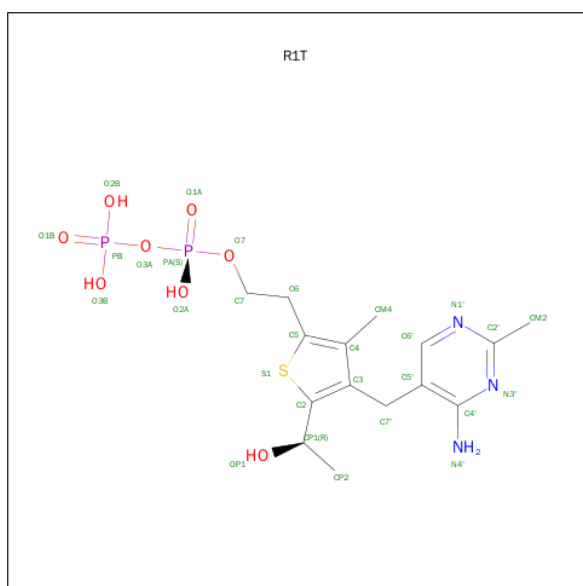
- Molecule 4 is MAGNESIUM ION (three-letter code: MG) (formula: Mg).

Mol	Chain	Residues	Atoms	ZeroOcc	AltConf
4	G	1	Total Mg 1 1	0	0
4	A	1	Total Mg 1 1	0	0
4	D	1	Total Mg 1 1	0	0
4	C	1	Total Mg 1 1	0	0
4	E	1	Total Mg 1 1	0	0

- Molecule 5 is POTASSIUM ION (three-letter code: K) (formula: K).

Mol	Chain	Residues	Atoms	ZeroOcc	AltConf
5	B	1	Total K 1 1	0	0
5	D	1	Total K 1 1	0	0

- Molecule 6 is 2-{4-[(4-AMINO-2-METHYLPYRIMIDIN-5-YL)METHYL]-5-[(1R)-1-HYDROXYETHYL]-3-METHYL-2-THIENYL}ETHYL TRIHYDROGEN DIPHOSPHATE (three-letter code: R1T) (formula: C<sub>15</sub>H<sub>23</sub>N<sub>3</sub>O<sub>8</sub>P<sub>2</sub>S).



Mol	Chain	Residues	Atoms	ZeroOcc	AltConf
6	A	1	Total C N O P S 29 15 3 8 2 1	0	0
6	C	1	Total C N O P S 29 15 3 8 2 1	0	0

Continued on next page...

*Continued from previous page...*

Mol	Chain	Residues	Atoms					ZeroOcc	AltConf
6	E	1	Total	C	N	O	P	S	
			29	15	3	8	2	1	
6	G	1	Total	C	N	O	P	S	
			29	15	3	8	2	1	

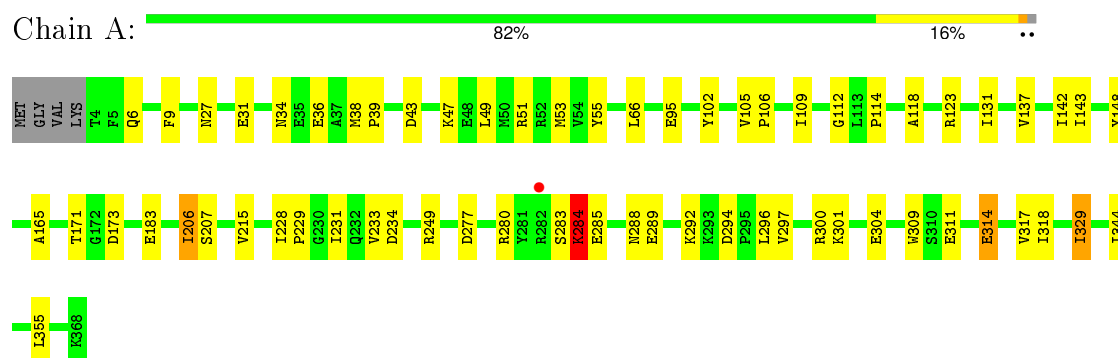
- Molecule 7 is water.

Mol	Chain	Residues	Atoms		ZeroOcc	AltConf
7	A	51	Total	O		
			51	51	0	0
7	B	43	Total	O		
			43	43	0	0
7	C	56	Total	O		
			56	56	0	0
7	D	48	Total	O		
			48	48	0	0
7	I	5	Total	O		
			5	5	0	0
7	E	54	Total	O		
			54	54	0	0
7	F	40	Total	O		
			40	40	0	0
7	G	47	Total	O		
			47	47	0	0
7	H	55	Total	O		
			55	55	0	0
7	J	8	Total	O		
			8	8	0	0

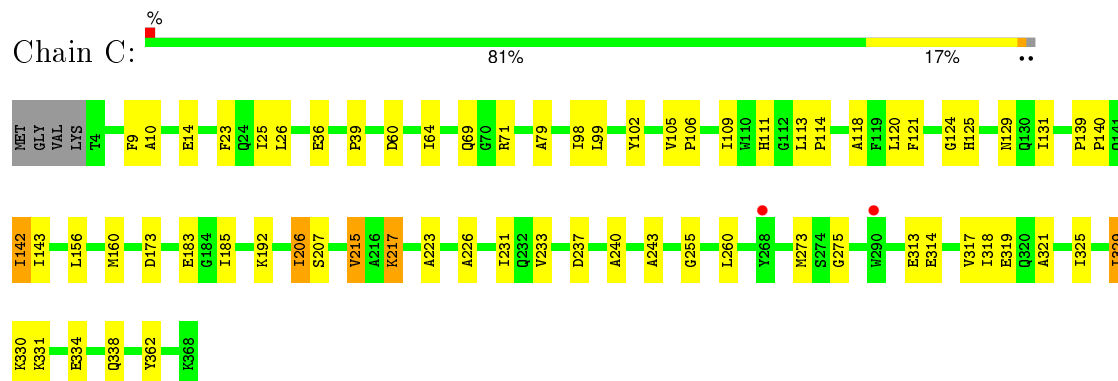
### 3 Residue-property plots [i](#)

These plots are drawn for all protein, RNA and DNA chains in the entry. The first graphic for a chain summarises the proportions of errors displayed in the second graphic. The second graphic shows the sequence view annotated by issues in geometry and electron density. Residues are color-coded according to the number of geometric quality criteria for which they contain at least one outlier: green = 0, yellow = 1, orange = 2 and red = 3 or more. A red dot above a residue indicates a poor fit to the electron density ( $RSRZ > 2$ ). Stretches of 2 or more consecutive residues without any outlier are shown as a green connector. Residues present in the sample, but not in the model, are shown in grey.

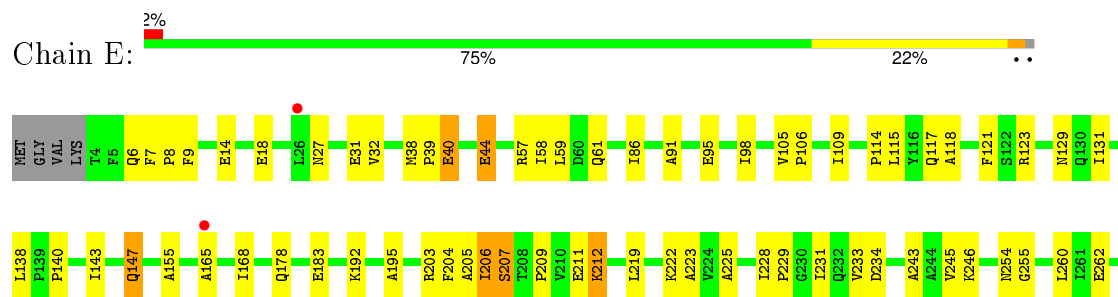
- Molecule 1: Pyruvate dehydrogenase E1 component subunit alpha



- Molecule 1: Pyruvate dehydrogenase E1 component subunit alpha

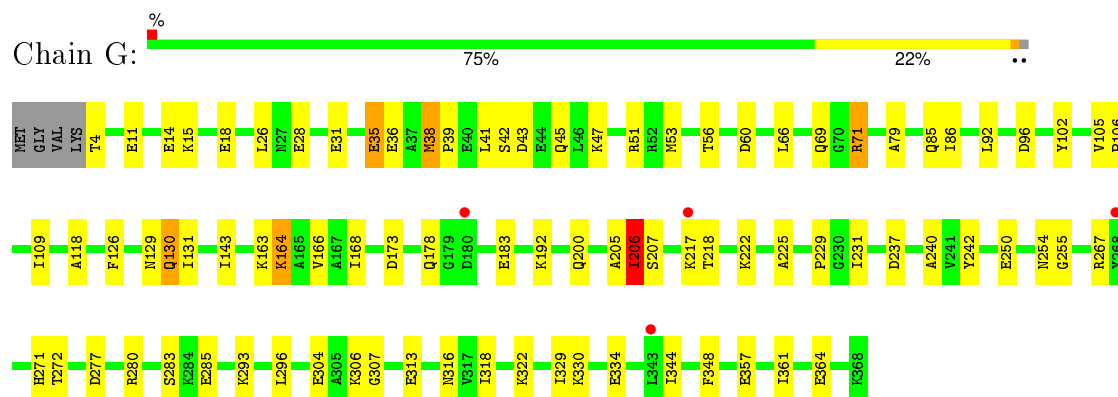


- Molecule 1: Pyruvate dehydrogenase E1 component subunit alpha

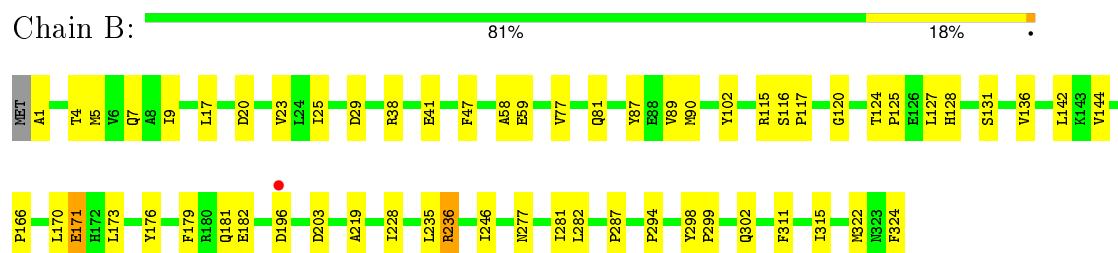




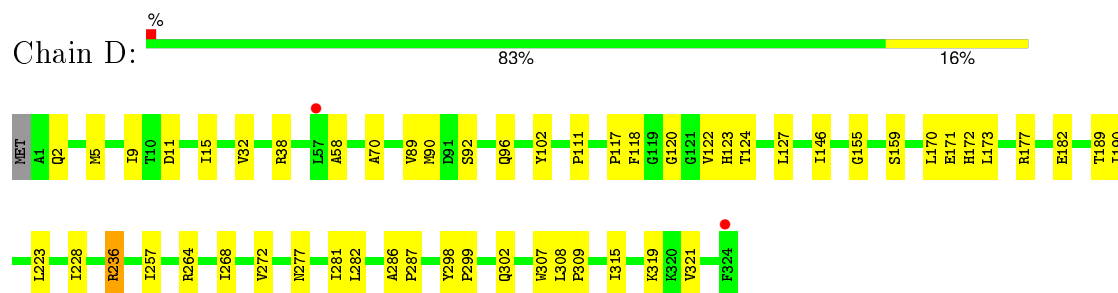
- Molecule 1: Pyruvate dehydrogenase E1 component subunit alpha



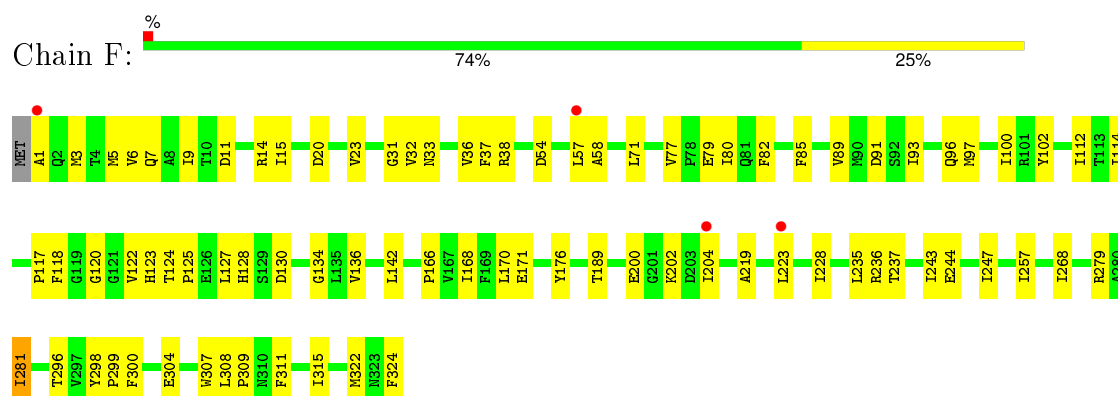
- Molecule 2: Pyruvate dehydrogenase E1 component subunit beta



- Molecule 2: Pyruvate dehydrogenase E1 component subunit beta

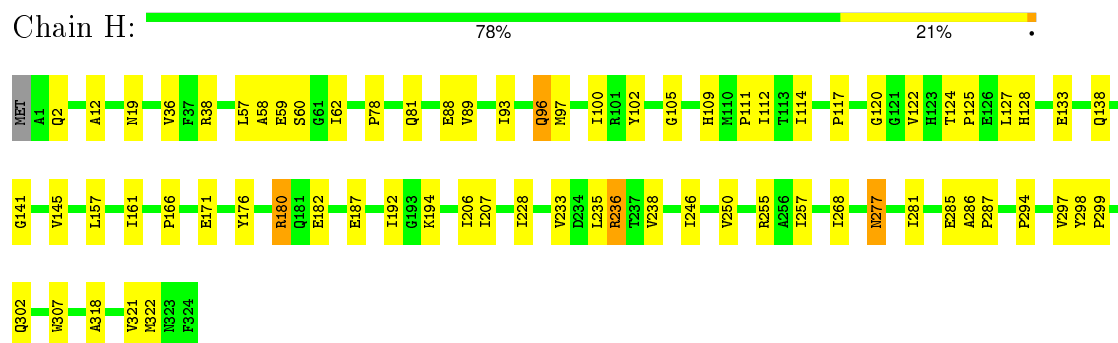


- Molecule 2: Pyruvate dehydrogenase E1 component subunit beta

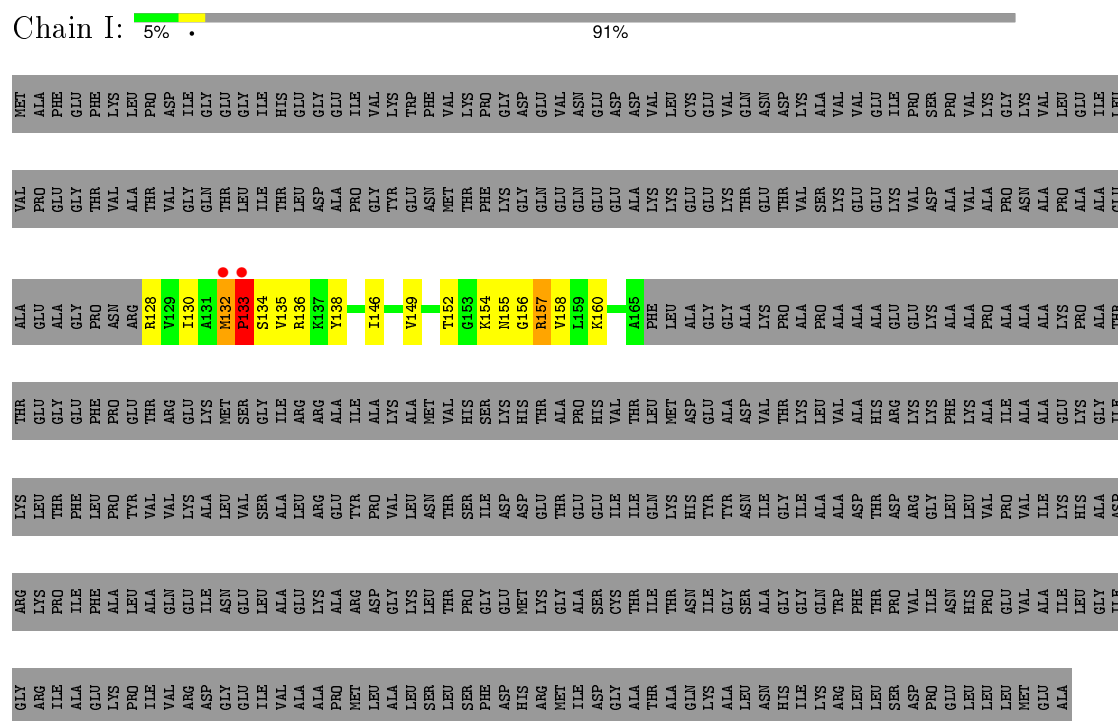




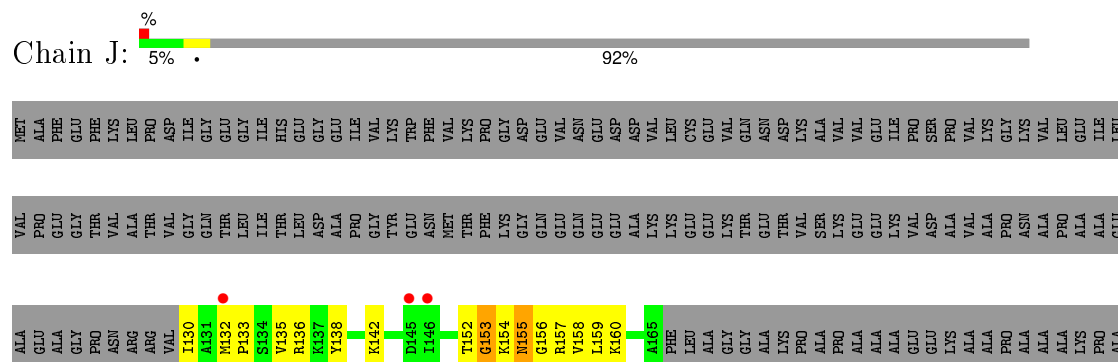
- Molecule 2: Pyruvate dehydrogenase E1 component subunit beta



- Molecule 3: Dihydrolipoyllysine-residue acetyltransferase component of pyruvate dehydrogenase complex



- Molecule 3: Dihydrolipoyllysine-residue acetyltransferase component of pyruvate dehydrogenase complex



[illegible]

## 4 Data and refinement statistics

Property	Value	Source
Space group	P 1 21 1	Depositor
Cell constants a, b, c, $\alpha$ , $\beta$ , $\gamma$	69.25Å 232.00Å 92.61Å 90.00° 90.74° 90.00°	Depositor
Resolution (Å)	59.44 – 2.50 59.45 – 2.50	Depositor EDS
% Data completeness (in resolution range)	98.9 (59.44-2.50) 98.8 (59.45-2.50)	Depositor EDS
$R_{merge}$	0.11	Depositor
$R_{sym}$	0.11	Depositor
$\langle I/\sigma(I) \rangle$ <sup>1</sup>	4.25 (at 2.51Å)	Xtriage
Refinement program	REFMAC 5.2.0019	Depositor
R, $R_{free}$	0.188 , 0.263 0.189 , 0.264	Depositor DCC
$R_{free}$ test set	5027 reflections (5.33%)	DCC
Wilson B-factor (Å <sup>2</sup> )	43.0	Xtriage
Anisotropy	0.402	Xtriage
Bulk solvent $k_{sol}$ (e/Å <sup>3</sup> ), $B_{sol}$ (Å <sup>2</sup> )	0.32 , 24.9	EDS
Estimated twinning fraction	0.074 for h,-k,-l	Xtriage
L-test for twinning <sup>2</sup>	$\langle  L  \rangle = 0.40$ , $\langle L^2 \rangle = 0.23$	Xtriage
Outliers	0 of 99351 reflections	Xtriage
$F_o, F_c$ correlation	0.94	EDS
Total number of atoms	22480	wwPDB-VP
Average B, all atoms (Å <sup>2</sup> )	42.0	wwPDB-VP

Xtriage's analysis on translational NCS is as follows: *The largest off-origin peak in the Patterson function is 2.68% of the height of the origin peak. No significant pseudotranslation is detected.*

<sup>1</sup>Intensities estimated from amplitudes.

<sup>2</sup>Theoretical values of  $\langle |L| \rangle$ ,  $\langle L^2 \rangle$  for acentric reflections are 0.5, 0.375 respectively for untwinned datasets, and 0.333, 0.2 for perfectly twinned datasets.

## 5 Model quality

### 5.1 Standard geometry

Bond lengths and bond angles in the following residue types are not validated in this section: K, MG, R1T

The Z score for a bond length (or angle) is the number of standard deviations the observed value is removed from the expected value. A bond length (or angle) with  $|Z| > 5$  is considered an outlier worth inspection. RMSZ is the root-mean-square of all Z scores of the bond lengths (or angles).

Mol	Chain	Bond lengths		Bond angles	
		RMSZ	$\# Z  > 5$	RMSZ	$\# Z  > 5$
1	A	0.38	0/2929	0.59	1/3961 (0.0%)
1	C	0.38	0/2908	0.57	0/3937
1	E	0.35	0/2930	0.57	2/3963 (0.1%)
1	G	0.37	0/2944	0.59	1/3980 (0.0%)
2	B	0.37	0/2534	0.64	1/3437 (0.0%)
2	D	0.39	0/2534	0.65	2/3437 (0.1%)
2	F	0.35	0/2532	0.61	0/3433
2	H	0.36	0/2534	0.62	2/3437 (0.1%)
3	I	0.32	0/278	0.67	0/369
3	J	0.30	0/264	0.76	1/351 (0.3%)
All	All	0.37	0/22387	0.60	10/30305 (0.0%)

There are no bond length outliers.

All (10) bond angle outliers are listed below:

Mol	Chain	Res	Type	Atoms	Z	Observed(°)	Ideal(°)
1	E	207	SER	N-CA-CB	-7.11	99.84	110.50
1	A	284	LYS	CB-CA-C	-6.65	97.10	110.40
2	D	236	ARG	CB-CA-C	-6.55	97.30	110.40
2	B	236	ARG	CB-CA-C	-6.46	97.48	110.40
1	E	207	SER	N-CA-C	6.30	128.01	111.00
1	G	206	ILE	N-CA-C	-5.71	95.58	111.00
2	H	96	GLN	N-CA-C	5.56	126.02	111.00
2	H	236	ARG	CB-CA-C	-5.53	99.35	110.40
3	J	155	ASN	CB-CA-C	-5.52	99.37	110.40
2	D	123	HIS	N-CA-C	5.12	124.82	111.00

There are no chirality outliers.

There are no planarity outliers.

## 5.2 Too-close contacts ⓘ

In the following table, the Non-H and H(model) columns list the number of non-hydrogen atoms and hydrogen atoms in the chain respectively. The H(added) column lists the number of hydrogen atoms added and optimized by MolProbity. The Clashes column lists the number of clashes within the asymmetric unit, whereas Symm-Clashes lists symmetry related clashes.

Mol	Chain	Non-H	H(model)	H(added)	Clashes	Symm-Clashes
1	A	2866	0	2818	53	0
1	C	2845	0	2776	52	0
1	E	2868	0	2825	89	0
1	G	2881	0	2844	71	0
2	B	2488	0	2515	43	0
2	D	2488	0	2515	42	0
2	F	2486	0	2506	60	0
2	H	2488	0	2515	59	0
3	I	277	0	277	28	0
3	J	263	0	259	25	0
4	A	1	0	0	0	0
4	C	1	0	0	0	0
4	D	1	0	0	0	0
4	E	1	0	0	0	0
4	G	1	0	0	0	0
5	B	1	0	0	0	0
5	D	1	0	0	0	0
6	A	29	0	20	2	0
6	C	29	0	20	2	0
6	E	29	0	20	6	0
6	G	29	0	20	5	0
7	A	51	0	0	2	0
7	B	43	0	0	3	0
7	C	56	0	0	1	0
7	D	48	0	0	3	0
7	E	54	0	0	6	0
7	F	40	0	0	2	0
7	G	47	0	0	5	0
7	H	55	0	0	2	0
7	I	5	0	0	0	0
7	J	8	0	0	0	0
All	All	22480	0	21930	476	0

The all-atom clashscore is defined as the number of clashes found per 1000 atoms (including hydrogen atoms). The all-atom clashscore for this structure is 11.

All (476) close contacts within the same asymmetric unit are listed below, sorted by their clash magnitude.

Atom-1	Atom-2	Interatomic distance (Å)	Clash overlap (Å)
6:E:1370:R1T:N4'	6:E:1370:R1T:HP22	1.35	1.41
6:E:1370:R1T:CP2	6:E:1370:R1T:H4'2	1.64	1.08
1:E:115:LEU:HD21	1:E:325:ILE:HD13	1.36	1.03
1:E:206:ILE:HG22	1:E:207:SER:H	1.23	1.01
1:E:143:ILE:HD11	2:H:127:LEU:HD13	1.45	0.98
1:E:109:ILE:HD11	1:E:118:ALA:HB2	1.51	0.93
1:E:147:GLN:H	1:E:147:GLN:NE2	1.70	0.90
1:E:58:ILE:HD11	1:E:318:ILE:HG12	1.53	0.90
1:E:147:GLN:H	1:E:147:GLN:HE21	1.15	0.89
2:H:238:VAL:HB	2:H:268:ILE:HD13	1.54	0.87
6:E:1370:R1T:CP2	6:E:1370:R1T:N4'	2.30	0.85
3:I:154:LYS:HE2	3:I:154:LYS:N	1.95	0.82
1:G:69:GLN:HG3	1:G:71:ARG:HG3	1.62	0.81
1:A:277:ASP:HA	1:A:280:ARG:HG2	1.62	0.81
1:A:9:PHE:HZ	1:C:231:ILE:HD11	1.44	0.80
1:A:131:ILE:HD13	1:A:137:VAL:HG23	1.61	0.80
2:H:2:GLN:HG3	2:H:180:ARG:HH21	1.49	0.78
1:E:270:PRO:HG3	1:E:278:PRO:HB3	1.66	0.78
2:H:207:ILE:HD13	2:H:233:VAL:HG11	1.65	0.78
1:E:95:GLU:HG3	1:E:165:ALA:HB2	1.67	0.77
6:G:1370:R1T:H7'2	6:G:1370:R1T:OP1	1.83	0.77
1:E:9:PHE:CE1	1:G:231:ILE:HD11	2.20	0.76
1:E:206:ILE:HG22	1:E:207:SER:N	1.98	0.76
1:E:294:ASP:HB3	1:E:297:VAL:HG23	1.68	0.76
1:E:300:ARG:O	1:E:304:GLU:HG3	1.86	0.75
2:D:264:ARG:HD3	7:D:1327:HOH:O	1.86	0.75
6:E:1370:R1T:H4'2	6:E:1370:R1T:HP22	0.77	0.75
1:A:183:GLU:OE1	2:B:58:ALA:HB1	1.86	0.74
3:I:157:ARG:HE	3:I:158:VAL:HG13	1.53	0.73
2:B:117:PRO:HA	2:B:171:GLU:O	1.89	0.73
2:D:281:ILE:HG23	2:D:282:LEU:HD12	1.71	0.73
3:I:130:ILE:HD12	3:I:154:LYS:HD2	1.71	0.72
1:E:147:GLN:N	1:E:147:GLN:HE21	1.87	0.72
2:F:5:MET:O	2:F:9:ILE:HG12	1.90	0.72
3:I:132:MET:HE3	3:I:133:PRO:HD3	1.70	0.72
3:J:155:ASN:HB2	3:J:158:VAL:HG22	1.71	0.71
1:C:129:ASN:O	1:C:131:ILE:HD12	1.90	0.71
6:E:1370:R1T:H7'2	6:E:1370:R1T:OP1	1.90	0.70
1:C:314:GLU:O	1:C:318:ILE:HG12	1.90	0.70
2:D:146:ILE:HG12	2:D:170:LEU:HB2	1.71	0.70
2:B:29:ASP:HB2	7:B:1340:HOH:O	1.91	0.70
1:E:325:ILE:HG13	7:E:1418:HOH:O	1.91	0.69

Continued on next page...

*Continued from previous page...*

Atom-1	Atom-2	Interatomic distance (Å)	Clash overlap (Å)
1:G:277:ASP:HB3	1:G:280:ARG:HD3	1.75	0.69
1:G:131:ILE:HD12	1:G:131:ILE:H	1.57	0.69
1:C:142:ILE:O	1:C:142:ILE:HD13	1.93	0.69
2:F:120:GLY:HA3	2:F:298:TYR:OH	1.93	0.69
2:B:311:PHE:O	2:B:315:ILE:HG12	1.93	0.69
1:C:60:ASP:OD2	1:C:79:ALA:HB2	1.92	0.68
2:F:127:LEU:HD13	1:G:143:ILE:HD11	1.76	0.68
2:D:177:ARG:HD3	7:D:1346:HOH:O	1.93	0.67
1:C:98:ILE:HD13	1:C:111:HIS:CD2	2.29	0.67
2:F:243:ILE:HG21	2:F:279:ARG:NH1	2.10	0.67
1:G:28:GLU:CD	1:G:28:GLU:H	1.97	0.67
1:A:109:ILE:HD11	1:A:118:ALA:HB2	1.75	0.67
2:H:207:ILE:HD13	2:H:233:VAL:CG1	2.25	0.66
2:F:122:VAL:HG23	2:F:124:THR:HG23	1.77	0.66
2:H:2:GLN:HG3	2:H:180:ARG:NH2	2.08	0.66
2:F:20:ASP:HB3	2:F:23:VAL:HG23	1.78	0.66
1:A:206:ILE:HG22	1:A:207:SER:H	1.60	0.66
2:D:122:VAL:HG23	2:D:124:THR:HG23	1.78	0.66
2:F:33:ASN:ND2	2:F:38:ARG:HH12	1.94	0.65
1:G:109:ILE:HD11	1:G:118:ALA:HB2	1.76	0.65
1:A:27:ASN:HD21	1:A:31:GLU:HB2	1.61	0.65
1:G:217:LYS:HD2	1:G:218:THR:HG23	1.77	0.65
2:H:122:VAL:HG23	2:H:124:THR:HG23	1.77	0.65
2:H:286:ALA:HB1	2:H:287:PRO:HD2	1.78	0.64
3:I:155:ASN:HA	3:I:158:VAL:CG2	2.28	0.64
3:I:133:PRO:CD	3:I:134:SER:H	2.10	0.64
3:I:154:LYS:H	3:I:154:LYS:HE2	1.63	0.64
1:E:270:PRO:CG	1:E:278:PRO:HB3	2.27	0.64
1:A:49:LEU:O	1:A:53:MET:HG3	1.98	0.64
1:A:231:ILE:HD11	1:C:9:PHE:CZ	2.33	0.63
1:E:129:ASN:O	1:E:131:ILE:HD12	1.99	0.63
2:B:1:ALA:HB3	2:B:182:GLU:OE1	1.98	0.63
1:E:223:ALA:HB2	1:E:260:LEU:HD23	1.80	0.63
3:J:152:THR:HB	3:J:155:ASN:HD22	1.62	0.63
2:B:102:TYR:OH	2:D:299:PRO:HA	1.99	0.63
2:D:159:SER:OG	2:D:189:THR:HB	1.99	0.63
1:C:109:ILE:HD11	1:C:118:ALA:HB2	1.81	0.63
2:H:78:PRO:HG2	2:H:114:ILE:HD13	1.80	0.62
2:D:277:ASN:O	2:D:281:ILE:HB	1.99	0.62
1:A:34:ASN:OD1	1:A:36:GLU:HG3	1.98	0.62
2:F:57:LEU:HD11	6:G:1370:R1T:HM41	1.80	0.62

*Continued on next page...*

*Continued from previous page...*

Atom-1	Atom-2	Interatomic distance (Å)	Clash overlap (Å)
2:D:89:VAL:O	2:D:89:VAL:HG22	1.99	0.62
1:E:321:ALA:O	1:E:325:ILE:HG12	1.99	0.62
2:B:299:PRO:HA	2:D:102:TYR:OH	2.00	0.62
1:E:300:ARG:HA	7:E:1417:HOH:O	1.99	0.62
1:E:57:ARG:O	1:E:61:GLN:HG3	1.99	0.62
2:H:38:ARG:HH11	2:H:38:ARG:HG2	1.64	0.62
1:E:246:LYS:HG3	7:E:1393:HOH:O	1.99	0.62
1:E:115:LEU:HD21	1:E:325:ILE:CD1	2.22	0.62
6:A:1370:R1T:OP1	6:A:1370:R1T:N4'	2.30	0.61
2:B:203:ASP:HB3	2:B:322:MET:HE2	1.81	0.61
1:A:206:ILE:HG22	1:A:207:SER:N	2.16	0.61
2:H:125:PRO:HG2	2:H:128:HIS:CE1	2.35	0.61
1:E:352:PRO:HD2	1:E:355:LEU:HD12	1.80	0.61
1:E:59:LEU:HA	7:E:1418:HOH:O	2.00	0.61
3:J:152:THR:HB	3:J:155:ASN:ND2	2.14	0.61
1:C:113:LEU:HD12	1:C:114:PRO:HD2	1.83	0.61
2:F:299:PRO:HA	2:H:102:TYR:OH	2.01	0.60
2:F:117:PRO:HA	2:F:171:GLU:O	2.01	0.60
2:F:82:PHE:HB2	2:F:85:PHE:CE2	2.36	0.60
2:F:58:ALA:HA	1:G:178:GLN:NE2	2.16	0.60
1:G:69:GLN:HG3	1:G:71:ARG:CG	2.31	0.60
2:D:11:ASP:O	2:D:15:ILE:HG12	2.01	0.60
3:I:152:THR:OG1	3:I:158:VAL:HG11	2.02	0.60
2:H:96:GLN:O	2:H:100:ILE:HG12	2.01	0.60
3:J:155:ASN:C	3:J:157:ARG:H	2.05	0.60
1:C:321:ALA:O	1:C:325:ILE:HG12	2.02	0.60
1:A:6:GLN:H	1:A:6:GLN:CD	2.06	0.60
1:A:123:ARG:HB3	2:D:302:GLN:HE21	1.68	0.59
2:B:128:HIS:HE1	1:C:142:ILE:HD11	1.67	0.59
1:A:95:GLU:HG3	1:A:165:ALA:HB2	1.83	0.59
1:C:10:ALA:O	1:C:14:GLU:HG3	2.02	0.59
2:H:228:ILE:N	2:H:228:ILE:HD12	2.17	0.59
3:I:133:PRO:HD2	3:I:134:SER:H	1.67	0.59
2:F:123:HIS:HD2	2:F:304:GLU:OE1	1.86	0.59
1:C:142:ILE:C	1:C:142:ILE:HD13	2.23	0.59
3:I:157:ARG:NE	3:I:158:VAL:HG13	2.17	0.58
1:G:330:LYS:O	1:G:334:GLU:HG3	2.02	0.58
1:E:270:PRO:CB	1:E:278:PRO:HB3	2.32	0.58
3:J:159:LEU:C	3:J:159:LEU:HD12	2.23	0.58
1:G:105:VAL:O	1:G:109:ILE:HG12	2.04	0.58
1:C:192:LYS:HE2	1:C:255:GLY:O	2.04	0.58

*Continued on next page...*



*Continued from previous page...*

Atom-1	Atom-2	Interatomic distance (Å)	Clash overlap (Å)
1:G:85:GLN:HG2	1:G:200:GLN:HE22	1.67	0.58
1:A:284:LYS:O	1:A:284:LYS:HG2	2.03	0.58
2:D:117:PRO:HB2	2:D:173:LEU:HD21	1.85	0.58
1:G:56:THR:CB	1:G:86:ILE:HD11	2.34	0.58
2:B:120:GLY:HA3	2:B:298:TYR:OH	2.04	0.58
2:B:127:LEU:HD13	1:C:143:ILE:HD11	1.86	0.58
3:I:155:ASN:HA	3:I:158:VAL:HG22	1.84	0.58
1:A:301:LYS:HE2	7:A:1394:HOH:O	2.03	0.57
2:B:59:GLU:H	2:B:59:GLU:CD	2.07	0.57
1:G:92:LEU:HD11	1:G:168:ILE:HG21	1.84	0.57
3:I:157:ARG:C	3:I:157:ARG:HD2	2.24	0.57
2:F:36:VAL:HG23	2:F:37:PHE:CD2	2.39	0.57
3:I:157:ARG:HE	3:I:158:VAL:CG1	2.18	0.57
2:B:38:ARG:HD2	2:B:41:GLU:OE1	2.05	0.57
2:D:155:GLY:HA3	2:D:190:ILE:HG12	1.87	0.57
1:E:44:GLU:HB2	7:E:1407:HOH:O	2.05	0.57
1:G:66:LEU:HD13	1:G:329:ILE:HD11	1.87	0.57
1:E:326:LYS:O	1:E:329:ILE:HG22	2.04	0.57
2:F:296:THR:HG21	1:G:344:ILE:HD13	1.85	0.57
1:G:105:VAL:N	1:G:106:PRO:CD	2.68	0.57
3:I:155:ASN:ND2	3:I:158:VAL:HG23	2.20	0.57
1:A:284:LYS:O	1:A:288:ASN:ND2	2.38	0.57
1:G:304:GLU:HA	7:G:1384:HOH:O	2.04	0.57
2:F:54:ASP:HB3	7:G:1379:HOH:O	2.04	0.56
1:E:362:TYR:O	1:E:366:GLU:HB2	2.05	0.56
1:A:344:ILE:HG23	1:A:355:LEU:HD22	1.85	0.56
3:J:152:THR:HB	3:J:158:VAL:HG11	1.87	0.56
1:A:109:ILE:HD11	1:A:118:ALA:CB	2.35	0.56
1:C:330:LYS:O	1:C:334:GLU:HG3	2.05	0.56
1:E:280:ARG:NH2	2:H:36:VAL:HA	2.21	0.56
1:E:155:ALA:HB2	1:E:195:ALA:HB2	1.88	0.56
1:G:192:LYS:HE2	1:G:255:GLY:O	2.05	0.56
2:H:277:ASN:O	2:H:281:ILE:HB	2.05	0.56
1:E:313:GLU:O	1:E:317:VAL:HG23	2.06	0.56
1:G:60:ASP:OD2	1:G:79:ALA:HB2	2.06	0.56
2:H:120:GLY:HA3	2:H:298:TYR:OH	2.05	0.56
1:C:98:ILE:HD12	1:C:98:ILE:N	2.21	0.56
1:G:109:ILE:HD11	1:G:118:ALA:CB	2.36	0.56
1:A:38:MET:SD	1:A:39:PRO:HD2	2.46	0.56
1:E:40:GLU:H	1:E:40:GLU:CD	2.09	0.56
2:F:124:THR:HB	2:F:125:PRO:HD2	1.88	0.55

*Continued on next page...*

*Continued from previous page...*

Atom-1	Atom-2	Interatomic distance (Å)	Clash overlap (Å)
2:F:89:VAL:O	2:F:89:VAL:HG22	2.06	0.55
1:E:32:VAL:HG23	7:E:1422:HOH:O	2.06	0.55
1:E:339:LYS:HB3	1:E:366:GLU:OE2	2.07	0.55
1:C:102:TYR:OH	6:C:1370:R1T:H71	2.06	0.55
1:A:102:TYR:OH	6:A:1370:R1T:H71	2.07	0.55
2:H:157:LEU:O	2:H:161:ILE:HG12	2.07	0.55
1:E:9:PHE:CD1	1:G:229:PRO:HB3	2.42	0.55
2:B:127:LEU:HD13	1:C:143:ILE:CD1	2.36	0.55
2:F:77:VAL:HG12	2:F:77:VAL:O	2.06	0.55
1:E:192:LYS:HB3	1:E:192:LYS:NZ	2.22	0.55
1:G:277:ASP:OD2	1:G:280:ARG:HG3	2.07	0.55
1:C:105:VAL:O	1:C:109:ILE:HG12	2.07	0.55
3:J:138:TYR:OH	3:J:160:LYS:HD3	2.07	0.55
1:G:357:GLU:O	1:G:361:ILE:HG12	2.07	0.55
2:B:228:ILE:HG23	2:B:322:MET:HE2	1.87	0.54
1:A:148:TYR:CE1	1:A:171:THR:HB	2.42	0.54
3:I:130:ILE:CD1	3:I:154:LYS:HD2	2.36	0.54
2:D:117:PRO:HA	2:D:171:GLU:O	2.08	0.54
2:F:296:THR:CG2	1:G:344:ILE:HD13	2.37	0.54
2:B:90:MET:HG3	2:D:90:MET:HG3	1.90	0.54
1:E:98:ILE:HG12	1:E:168:ILE:HG22	1.90	0.54
2:F:134:GLY:HA3	2:H:138:GLN:HE22	1.72	0.54
3:I:155:ASN:CG	3:I:158:VAL:HG23	2.28	0.54
1:E:39:PRO:HG3	1:E:243:ALA:HB2	1.89	0.54
1:E:58:ILE:CD1	1:E:318:ILE:HG23	2.38	0.54
1:A:215:VAL:O	1:A:215:VAL:HG22	2.08	0.54
2:H:89:VAL:HG22	2:H:89:VAL:O	2.09	0.53
2:H:117:PRO:HA	2:H:171:GLU:O	2.08	0.53
1:E:109:ILE:HD11	1:E:118:ALA:CB	2.33	0.53
2:H:246:ILE:O	2:H:250:VAL:HG23	2.09	0.53
1:G:51:ARG:HH11	1:G:51:ARG:HG3	1.74	0.53
1:G:271:HIS:CD2	1:G:272:THR:HG23	2.43	0.53
1:G:131:ILE:HD12	1:G:131:ILE:N	2.22	0.53
2:B:181:GLN:HG2	2:B:182:GLU:N	2.22	0.53
1:A:51:ARG:HG2	1:A:317:VAL:HG21	1.90	0.53
3:I:135:VAL:HG11	3:I:155:ASN:HB3	1.91	0.53
1:E:98:ILE:HG12	1:E:168:ILE:CG2	2.38	0.53
3:I:160:LYS:HE2	3:I:160:LYS:HA	1.91	0.53
2:H:109:HIS:ND1	2:H:111:PRO:HD3	2.23	0.53
1:C:223:ALA:HB2	1:C:260:LEU:HD23	1.90	0.53
2:B:5:MET:O	2:B:9:ILE:HG12	2.08	0.53

*Continued on next page...*

*Continued from previous page...*

Atom-1	Atom-2	Interatomic distance (Å)	Clash overlap (Å)
1:E:270:PRO:HB3	1:E:278:PRO:HB3	1.91	0.52
3:I:130:ILE:O	3:I:154:LYS:HB3	2.09	0.52
2:F:32:VAL:HG23	2:F:33:ASN:N	2.24	0.52
1:E:138:LEU:HD11	2:F:71:LEU:HD11	1.91	0.52
3:J:130:ILE:O	3:J:154:LYS:HB3	2.09	0.52
1:E:38:MET:SD	1:E:39:PRO:HD2	2.50	0.52
2:F:235:LEU:C	2:F:237:THR:H	2.12	0.52
1:E:203:ARG:HG2	1:E:203:ARG:HH11	1.74	0.52
1:G:26:LEU:HB2	1:G:237:ASP:OD1	2.10	0.52
1:G:38:MET:SD	1:G:39:PRO:HD2	2.50	0.52
1:G:130:GLN:HE21	2:H:105:GLY:HA3	1.75	0.52
1:A:131:ILE:HD13	1:A:137:VAL:CG2	2.36	0.52
1:E:209:PRO:HG2	1:E:212:LYS:HD2	1.92	0.52
2:H:112:ILE:O	2:H:166:PRO:HA	2.10	0.52
2:D:117:PRO:HB2	2:D:173:LEU:CD2	2.40	0.52
2:H:180:ARG:HB3	7:H:349:HOH:O	2.09	0.51
1:C:183:GLU:OE1	2:D:58:ALA:HB1	2.09	0.51
2:B:25:ILE:HD13	2:B:77:VAL:HB	1.92	0.51
1:G:129:ASN:O	1:G:131:ILE:HD12	2.10	0.51
3:J:138:TYR:CE1	3:J:159:LEU:HD11	2.46	0.51
1:E:211:GLU:C	1:E:212:LYS:HE2	2.30	0.51
1:G:206:ILE:HG22	1:G:207:SER:H	1.75	0.51
3:I:133:PRO:CD	3:I:134:SER:N	2.73	0.51
1:C:105:VAL:N	1:C:106:PRO:CD	2.73	0.51
2:B:302:GLN:HB2	1:C:338:GLN:NE2	2.25	0.51
3:J:152:THR:CB	3:J:158:VAL:HG11	2.40	0.51
1:E:329:ILE:HD13	1:E:329:ILE:O	2.11	0.51
2:F:300:PHE:CE2	1:G:126:PHE:HB3	2.46	0.51
1:G:69:GLN:CG	1:G:71:ARG:HG3	2.38	0.51
2:B:219:ALA:HA	2:B:315:ILE:HD11	1.93	0.51
1:A:9:PHE:CZ	1:C:231:ILE:HD11	2.35	0.50
1:E:205:ALA:O	1:E:206:ILE:HB	2.11	0.50
2:H:194:LYS:HD3	7:H:361:HOH:O	2.11	0.50
2:H:12:ALA:HB3	2:H:157:LEU:HD23	1.93	0.50
2:F:125:PRO:HG2	2:F:128:HIS:CE1	2.47	0.50
2:D:298:TYR:CG	2:D:299:PRO:HD2	2.47	0.50
2:F:311:PHE:O	2:F:315:ILE:HG12	2.10	0.50
2:B:324:PHE:HZ	2:D:282:LEU:HD11	1.76	0.50
1:A:143:ILE:HD11	2:D:127:LEU:HD13	1.93	0.50
1:G:43:ASP:O	1:G:47:LYS:HG3	2.12	0.50
2:F:79:GLU:O	2:F:80:ILE:HD13	2.12	0.50

*Continued on next page...*

*Continued from previous page...*

Atom-1	Atom-2	Interatomic distance (Å)	Clash overlap (Å)
1:G:131:ILE:H	1:G:131:ILE:CD1	2.24	0.50
3:J:159:LEU:O	3:J:159:LEU:HD12	2.12	0.50
2:F:3:MET:HB2	2:F:7:GLN:HB2	1.94	0.50
2:B:115:ARG:HD3	7:B:1332:HOH:O	2.12	0.50
2:F:11:ASP:O	2:F:15:ILE:HG12	2.12	0.50
1:G:15:LYS:O	1:G:18:GLU:HB3	2.12	0.49
1:E:7:PHE:HB3	1:E:8:PRO:HD2	1.94	0.49
1:E:304:GLU:C	1:E:306:LYS:H	2.13	0.49
2:D:92:SER:O	2:D:96:GLN:HB2	2.13	0.49
1:A:233:VAL:HG22	1:A:234:ASP:N	2.27	0.49
1:A:280:ARG:HA	1:A:280:ARG:NE	2.28	0.49
2:H:2:GLN:CG	2:H:180:ARG:HH21	2.20	0.49
1:A:289:GLU:O	1:A:292:LYS:HG2	2.12	0.49
1:G:183:GLU:OE1	2:H:58:ALA:HB1	2.13	0.49
2:F:114:ILE:HD12	2:F:114:ILE:N	2.28	0.49
2:D:286:ALA:HB1	2:D:287:PRO:HD2	1.95	0.49
2:H:318:ALA:O	2:H:322:MET:HG2	2.13	0.49
2:H:255:ARG:NH1	2:H:321:VAL:O	2.45	0.48
1:E:223:ALA:HB2	1:E:260:LEU:CD2	2.44	0.48
2:F:219:ALA:HA	2:F:315:ILE:HD11	1.94	0.48
1:E:228:ILE:HB	1:E:229:PRO:HD2	1.96	0.48
2:B:277:ASN:O	2:B:281:ILE:HB	2.14	0.48
2:F:247:ILE:HD11	2:F:279:ARG:HD2	1.95	0.48
2:F:204:ILE:HD11	2:F:257:ILE:HG23	1.95	0.48
2:F:97:MET:HA	2:F:100:ILE:HG12	1.96	0.48
3:I:157:ARG:HH21	3:I:157:ARG:HG2	1.78	0.48
2:H:38:ARG:NH1	2:H:38:ARG:HG2	2.28	0.48
2:H:228:ILE:H	2:H:228:ILE:HD12	1.76	0.48
3:J:132:MET:SD	3:J:135:VAL:HG21	2.53	0.48
2:H:285:GLU:OE2	3:J:136:ARG:HD3	2.13	0.48
1:E:143:ILE:CD1	2:H:127:LEU:HD13	2.32	0.48
1:A:105:VAL:N	1:A:106:PRO:CD	2.76	0.48
2:B:124:THR:HB	2:B:125:PRO:HD2	1.95	0.48
2:B:235:LEU:HD21	2:B:246:ILE:HD11	1.94	0.48
1:G:71:ARG:HH22	1:G:329:ILE:HG21	1.79	0.48
2:F:281:ILE:HD12	3:J:133:PRO:HB2	1.96	0.48
2:D:118:PHE:O	2:D:172:HIS:HA	2.14	0.48
1:A:277:ASP:HA	1:A:280:ARG:CG	2.36	0.48
2:F:57:LEU:HD11	6:G:1370:R1T:CM4	2.44	0.48
1:A:27:ASN:ND2	1:A:31:GLU:HB2	2.28	0.47
3:I:132:MET:HG3	3:I:132:MET:O	2.14	0.47

*Continued on next page...*

*Continued from previous page...*

Atom-1	Atom-2	Interatomic distance (Å)	Clash overlap (Å)
3:J:153:GLY:C	3:J:155:ASN:H	2.16	0.47
2:D:264:ARG:NH1	7:D:1327:HOH:O	2.47	0.47
1:A:231:ILE:HD11	1:C:9:PHE:CE1	2.49	0.47
1:E:9:PHE:HE1	1:G:231:ILE:HD11	1.77	0.47
2:B:4:THR:OG1	2:B:7:GLN:HG3	2.14	0.47
2:D:299:PRO:HD3	2:D:307:TRP:CE2	2.49	0.47
2:F:219:ALA:O	2:F:223:LEU:HG	2.14	0.47
1:G:293:LYS:HD2	7:G:1385:HOH:O	2.14	0.47
1:E:233:VAL:HG12	1:E:234:ASP:N	2.30	0.47
1:A:277:ASP:CA	1:A:280:ARG:HG2	2.41	0.47
2:D:120:GLY:HA3	2:D:298:TYR:OH	2.14	0.47
1:E:212:LYS:HE2	1:E:212:LYS:CA	2.44	0.47
1:E:7:PHE:CD1	1:E:7:PHE:N	2.83	0.47
1:C:185:ILE:HG13	1:C:226:ALA:HB2	1.95	0.47
1:A:300:ARG:O	1:A:304:GLU:HG3	2.14	0.47
1:C:98:ILE:HD13	1:C:111:HIS:NE2	2.29	0.47
2:B:294:PRO:HG3	1:C:362:TYR:CZ	2.50	0.47
1:A:231:ILE:HD11	1:C:9:PHE:HZ	1.75	0.46
1:E:212:LYS:N	1:E:212:LYS:HE2	2.30	0.46
1:E:58:ILE:HD13	1:E:318:ILE:HG23	1.97	0.46
1:E:192:LYS:HB3	1:E:192:LYS:HZ3	1.78	0.46
1:E:203:ARG:HG2	1:E:203:ARG:NH1	2.30	0.46
2:B:20:ASP:HB3	2:B:23:VAL:HG23	1.96	0.46
2:F:102:TYR:OH	2:H:299:PRO:HA	2.15	0.46
2:D:257:ILE:CG2	2:D:321:VAL:HG21	2.44	0.46
1:A:102:TYR:HB3	1:A:142:ILE:HD13	1.98	0.46
2:F:93:ILE:HA	2:F:97:MET:HG2	1.98	0.46
1:G:53:MET:HB3	1:G:296:LEU:HD21	1.97	0.46
1:A:112:GLY:O	1:A:114:PRO:HD3	2.16	0.46
2:H:2:GLN:HB3	2:H:180:ARG:HD3	1.98	0.46
1:E:91:ALA:HB3	1:E:245:VAL:CG1	2.46	0.46
3:I:128:ARG:HG2	3:I:128:ARG:HH11	1.81	0.46
2:H:60:SER:HA	2:H:89:VAL:HG23	1.96	0.46
1:E:105:VAL:N	1:E:106:PRO:CD	2.79	0.45
1:C:64:ILE:HG23	1:C:273:MET:CE	2.47	0.45
1:E:27:ASN:OD1	1:E:31:GLU:HB2	2.16	0.45
1:G:304:GLU:C	1:G:306:LYS:H	2.18	0.45
1:G:42:SER:OG	1:G:45:GLN:HG3	2.16	0.45
7:A:1371:HOH:O	1:C:215:VAL:HG22	2.15	0.45
3:J:152:THR:OG1	3:J:158:VAL:HG11	2.17	0.45
3:J:153:GLY:C	3:J:155:ASN:N	2.70	0.45

*Continued on next page...*

*Continued from previous page...*

Atom-1	Atom-2	Interatomic distance (Å)	Clash overlap (Å)
1:E:212:LYS:HE2	1:E:212:LYS:HA	1.97	0.45
1:C:23:PHE:CZ	1:C:25:ILE:HD11	2.51	0.45
2:H:59:GLU:HB2	2:H:88:GLU:HB3	1.98	0.45
2:B:89:VAL:HG22	2:B:89:VAL:O	2.16	0.45
6:G:1370:R1T:C7'	6:G:1370:R1T:OP1	2.59	0.45
2:B:128:HIS:CE1	1:C:142:ILE:HD11	2.49	0.45
1:G:56:THR:OG1	1:G:86:ILE:HD11	2.17	0.45
3:J:132:MET:HB2	3:J:135:VAL:HG23	1.98	0.45
1:C:99:LEU:HD12	1:C:99:LEU:N	2.31	0.45
2:F:202:LYS:O	2:F:202:LYS:HD3	2.16	0.45
2:F:20:ASP:HB3	2:F:23:VAL:CG2	2.45	0.45
1:A:249:ARG:HG2	1:A:249:ARG:HH11	1.81	0.45
2:B:17:LEU:HD13	2:B:47:PHE:CD2	2.52	0.45
1:C:69:GLN:HG3	7:C:1379:HOH:O	2.17	0.45
1:E:294:ASP:HB3	1:E:297:VAL:CG2	2.41	0.45
3:J:154:LYS:HD3	3:J:154:LYS:N	2.32	0.45
1:C:125:HIS:HA	1:C:338:GLN:NE2	2.31	0.45
1:C:217:LYS:HD3	2:F:1:ALA:HB2	1.99	0.45
1:E:225:ALA:O	1:G:222:LYS:HE2	2.17	0.45
2:H:206:ILE:HG12	2:H:257:ILE:HD11	1.98	0.45
2:D:146:ILE:HD11	2:D:170:LEU:HD12	1.99	0.45
1:G:96:ASP:OD1	1:G:166:VAL:HG22	2.17	0.45
1:G:206:ILE:HG22	1:G:207:SER:N	2.31	0.45
1:G:277:ASP:HB3	1:G:280:ARG:CD	2.45	0.44
2:F:112:ILE:O	2:F:166:PRO:HA	2.17	0.44
2:D:299:PRO:HD3	2:D:307:TRP:CD2	2.51	0.44
2:D:70:ALA:HB1	2:D:111:PRO:HD2	2.00	0.44
2:B:179:PHE:HE2	7:B:1343:HOH:O	2.00	0.44
1:C:156:LEU:O	1:C:160:MET:HG3	2.18	0.44
3:J:153:GLY:C	3:J:154:LYS:HG2	2.38	0.44
2:F:243:ILE:HG21	2:F:279:ARG:HH11	1.78	0.44
2:H:2:GLN:NE2	2:H:182:GLU:OE1	2.50	0.44
1:A:66:LEU:HD13	1:A:329:ILE:HG13	1.98	0.44
2:H:233:VAL:O	2:H:233:VAL:HG13	2.18	0.44
2:B:203:ASP:HB3	2:B:322:MET:CE	2.48	0.44
2:D:223:LEU:HB3	2:D:228:ILE:HB	2.00	0.44
3:J:155:ASN:C	3:J:157:ARG:N	2.71	0.44
2:D:315:ILE:O	2:D:319:LYS:HG2	2.18	0.44
2:F:268:ILE:HD12	2:F:268:ILE:C	2.38	0.44
2:B:136:VAL:HG23	2:B:144:VAL:HG21	2.00	0.44
2:B:282:LEU:HA	3:I:134:SER:HB3	1.99	0.44

*Continued on next page...*

*Continued from previous page...*

Atom-1	Atom-2	Interatomic distance (Å)	Clash overlap (Å)
1:E:192:LYS:NZ	1:E:255:GLY:O	2.49	0.44
2:F:142:LEU:HD22	2:F:168:ILE:HD11	1.99	0.44
3:J:138:TYR:O	3:J:142:LYS:HG2	2.18	0.43
1:G:79:ALA:HB3	7:G:1372:HOH:O	2.18	0.43
1:E:183:GLU:OE1	2:F:58:ALA:HB1	2.18	0.43
2:H:58:ALA:O	2:H:62:ILE:HG13	2.18	0.43
2:F:14:ARG:HG3	2:F:14:ARG:HH11	1.83	0.43
1:C:36:GLU:OE2	1:C:36:GLU:N	2.51	0.43
1:G:71:ARG:NH2	1:G:329:ILE:HG21	2.34	0.43
2:F:6:VAL:HG13	2:F:7:GLN:N	2.33	0.43
1:C:39:PRO:HG3	1:C:243:ALA:HB2	2.01	0.43
1:A:228:ILE:HB	1:A:229:PRO:HD2	2.00	0.43
2:D:282:LEU:HA	3:I:132:MET:HB3	2.00	0.43
1:G:205:ALA:O	1:G:206:ILE:HB	2.19	0.43
1:C:313:GLU:O	1:C:317:VAL:HG23	2.17	0.43
2:F:299:PRO:HD3	2:F:307:TRP:CE2	2.53	0.43
3:J:135:VAL:HG22	3:J:156:GLY:HA3	2.00	0.43
1:A:95:GLU:HG3	1:A:165:ALA:CB	2.46	0.43
3:I:138:TYR:OH	3:I:160:LYS:HD2	2.18	0.43
1:E:14:GLU:O	1:E:18:GLU:HG3	2.18	0.43
1:E:206:ILE:CG2	1:E:207:SER:N	2.69	0.43
1:E:58:ILE:HD11	1:E:318:ILE:HG23	2.00	0.43
1:C:131:ILE:HD11	1:C:139:PRO:HG3	2.00	0.43
2:D:2:GLN:HE22	2:D:182:GLU:HB2	1.84	0.43
1:G:318:ILE:CG2	1:G:322:LYS:HE2	2.49	0.43
2:H:235:LEU:O	2:H:236:ARG:HB2	2.19	0.43
1:E:204:PHE:HB3	1:E:206:ILE:O	2.19	0.43
1:A:280:ARG:HH22	2:D:38:ARG:HH22	1.65	0.43
1:E:9:PHE:CZ	1:G:231:ILE:HD11	2.53	0.43
2:F:189:THR:HG23	7:F:341:HOH:O	2.18	0.43
2:D:268:ILE:O	2:D:272:VAL:HG23	2.19	0.43
1:G:41:LEU:HD21	1:G:242:TYR:CZ	2.52	0.43
1:C:121:PHE:CZ	1:C:140:PRO:HB2	2.54	0.42
2:B:142:LEU:HD23	2:B:166:PRO:HB2	2.01	0.42
1:G:313:GLU:HA	1:G:316:ASN:HD22	1.83	0.42
1:E:178:GLN:HE21	2:H:57:LEU:CD2	2.32	0.42
1:E:58:ILE:CD1	1:E:318:ILE:HG12	2.39	0.42
1:E:86:ILE:HD12	1:E:86:ILE:N	2.34	0.42
1:A:309:TRP:HE1	1:A:314:GLU:CD	2.22	0.42
2:F:79:GLU:HG2	2:F:80:ILE:N	2.34	0.42
3:I:146:ILE:O	3:I:149:VAL:HG22	2.19	0.42

*Continued on next page...*

*Continued from previous page...*

Atom-1	Atom-2	Interatomic distance (Å)	Clash overlap (Å)
2:F:228:ILE:HD13	2:F:322:MET:HG3	2.02	0.42
1:A:283:SER:O	1:A:285:GLU:N	2.51	0.42
1:G:348:PHE:CZ	2:H:141:GLY:HA2	2.54	0.42
2:H:78:PRO:CG	2:H:114:ILE:HD13	2.48	0.42
1:E:219:LEU:HB2	1:E:262:GLU:CD	2.39	0.42
2:D:5:MET:O	2:D:9:ILE:HG13	2.19	0.42
1:G:69:GLN:HE21	1:G:71:ARG:CD	2.33	0.42
1:A:314:GLU:O	1:A:318:ILE:HG13	2.20	0.42
1:E:267:ARG:HH11	1:E:267:ARG:HG2	1.85	0.42
3:I:135:VAL:HG22	3:I:156:GLY:HA2	2.01	0.42
1:E:362:TYR:CE2	2:H:294:PRO:HG3	2.54	0.42
2:H:117:PRO:HB3	2:H:176:TYR:OH	2.20	0.42
1:G:283:SER:HB2	1:G:285:GLU:OE1	2.20	0.42
1:E:58:ILE:CD1	1:E:318:ILE:HA	2.50	0.42
1:C:206:ILE:HG22	1:C:207:SER:N	2.35	0.42
2:F:118:PHE:CE1	2:F:170:LEU:HB3	2.55	0.42
1:E:59:LEU:HD13	1:E:325:ILE:HD11	2.02	0.42
2:H:238:VAL:CB	2:H:268:ILE:HD13	2.39	0.42
1:G:307:GLY:HA2	7:G:1384:HOH:O	2.19	0.42
2:B:302:GLN:HB2	1:C:124:GLY:O	2.20	0.42
1:C:217:LYS:CD	2:F:1:ALA:HB2	2.50	0.42
2:D:281:ILE:CG2	2:D:282:LEU:HD12	2.45	0.41
3:J:138:TYR:HE1	3:J:159:LEU:HD11	1.82	0.41
2:H:297:VAL:O	2:H:298:TYR:C	2.59	0.41
1:A:294:ASP:HB3	1:A:297:VAL:HG23	2.02	0.41
1:G:164:LYS:HA	1:G:164:LYS:HE3	2.02	0.41
2:H:145:VAL:HG21	2:H:192:ILE:HD12	2.01	0.41
2:B:287:PRO:HB3	2:D:281:ILE:HG21	2.01	0.41
2:H:124:THR:HB	2:H:125:PRO:HD2	2.01	0.41
2:F:324:PHE:HA	7:F:360:HOH:O	2.19	0.41
1:E:222:LYS:HA	1:G:225:ALA:HA	2.02	0.41
6:E:1370:R1T:HM41	2:H:57:LEU:HD11	2.01	0.41
1:C:331:LYS:HE2	1:C:331:LYS:HB3	1.83	0.41
1:G:31:GLU:OE1	1:G:31:GLU:N	2.53	0.41
1:G:102:TYR:OH	6:G:1370:R1T:H71	2.20	0.41
2:B:324:PHE:CZ	2:D:282:LEU:HD11	2.55	0.41
1:A:6:GLN:N	1:A:6:GLN:CD	2.71	0.41
1:G:237:ASP:OD2	1:G:240:ALA:HB2	2.20	0.41
2:F:202:LYS:C	2:F:202:LYS:HD3	2.41	0.41
1:G:35:GLU:OE1	1:G:36:GLU:N	2.54	0.41
1:C:25:ILE:HG12	1:C:240:ALA:HB2	2.03	0.41

*Continued on next page...*



Continued from previous page...

Atom-1	Atom-2	Interatomic distance (Å)	Clash overlap (Å)
1:C:120:LEU:HD23	1:C:120:LEU:HA	1.93	0.41
2:D:308:LEU:HA	2:D:309:PRO:HD3	1.88	0.41
1:E:123:ARG:HD3	2:H:302:GLN:HE22	1.84	0.41
1:A:294:ASP:OD2	1:A:296:LEU:N	2.51	0.41
1:C:26:LEU:N	1:C:237:ASP:OD2	2.50	0.41
2:B:116:SER:O	2:B:170:LEU:HA	2.21	0.41
2:H:133:GLU:H	2:H:133:GLU:CD	2.23	0.41
2:H:93:ILE:HA	2:H:97:MET:HG2	2.03	0.41
2:B:87:TYR:HA	2:B:90:MET:HG2	2.03	0.40
1:A:283:SER:C	1:A:285:GLU:H	2.23	0.40
2:F:308:LEU:HA	2:F:309:PRO:HD3	1.94	0.40
1:G:11:GLU:O	1:G:14:GLU:HB3	2.21	0.40
1:A:294:ASP:HB3	1:A:297:VAL:CG2	2.51	0.40
1:E:114:PRO:HD2	1:E:117:GLN:OE1	2.21	0.40
1:E:121:PHE:CZ	1:E:140:PRO:HB2	2.56	0.40
2:F:91:ASP:O	2:F:96:GLN:HG2	2.22	0.40
1:A:43:ASP:O	1:A:47:LYS:HG3	2.22	0.40
1:G:250:GLU:O	1:G:254:ASN:ND2	2.54	0.40
2:B:81:GLN:OE1	6:C:1370:R1T:H7'1	2.22	0.40
2:H:299:PRO:HD3	2:H:307:TRP:CD2	2.56	0.40
1:G:267:ARG:O	1:G:267:ARG:HG3	2.21	0.40
1:C:329:ILE:HA	1:C:329:ILE:HD13	1.93	0.40
1:E:304:GLU:C	1:E:306:LYS:N	2.74	0.40
3:J:152:THR:HG22	3:J:152:THR:O	2.22	0.40

There are no symmetry-related clashes.

## 5.3 Torsion angles [i](#)

### 5.3.1 Protein backbone [i](#)

In the following table, the Percentiles column shows the percent Ramachandran outliers of the chain as a percentile score with respect to all X-ray entries followed by that with respect to entries of similar resolution.

The Analysed column shows the number of residues for which the backbone conformation was analysed, and the total number of residues.

Mol	Chain	Analysed	Favoured	Allowed	Outliers	Percentiles
1	A	363/369 (98%)	351 (97%)	10 (3%)	2 (1%)	30 50

Continued on next page...

*Continued from previous page...*

Mol	Chain	Analysed	Favoured	Allowed	Outliers	Percentiles	
1	C	363/369 (98%)	350 (96%)	11 (3%)	2 (1%)	30	50
1	E	363/369 (98%)	344 (95%)	17 (5%)	2 (1%)	30	50
1	G	363/369 (98%)	349 (96%)	13 (4%)	1 (0%)	46	68
2	B	322/325 (99%)	308 (96%)	13 (4%)	1 (0%)	46	68
2	D	322/325 (99%)	307 (95%)	14 (4%)	1 (0%)	46	68
2	F	322/325 (99%)	307 (95%)	13 (4%)	2 (1%)	30	50
2	H	322/325 (99%)	307 (95%)	15 (5%)	0	100	100
3	I	36/428 (8%)	29 (81%)	6 (17%)	1 (3%)	6	9
3	J	34/428 (8%)	31 (91%)	2 (6%)	1 (3%)	6	8
All	All	2810/3632 (77%)	2683 (96%)	114 (4%)	13 (0%)	34	55

All (13) Ramachandran outliers are listed below:

Mol	Chain	Res	Type
1	A	284	LYS
2	B	236	ARG
3	I	133	PRO
1	G	206	ILE
3	J	153	GLY
1	A	206	ILE
1	C	206	ILE
1	C	275	GLY
1	E	206	ILE
2	F	236	ARG
2	D	236	ARG
2	F	31	GLY
1	E	278	PRO

### 5.3.2 Protein sidechains ⓘ

In the following table, the Percentiles column shows the percent sidechain outliers of the chain as a percentile score with respect to all X-ray entries followed by that with respect to entries of similar resolution.

The Analysed column shows the number of residues for which the sidechain conformation was analysed, and the total number of residues.

*Continued on next page...*

*Continued from previous page...*

Mol	Chain	Analysed	Rotameric	Outliers	Percentiles	
1	A	294/305 (96%)	289 (98%)	5 (2%)	68	89
1	C	289/305 (95%)	281 (97%)	8 (3%)	51	78
1	E	295/305 (97%)	286 (97%)	9 (3%)	47	75
1	G	297/305 (97%)	288 (97%)	9 (3%)	48	76
2	B	263/264 (100%)	258 (98%)	5 (2%)	65	87
2	D	263/264 (100%)	262 (100%)	1 (0%)	93	98
2	F	262/264 (99%)	256 (98%)	6 (2%)	58	83
2	H	263/264 (100%)	258 (98%)	5 (2%)	65	87
3	I	25/341 (7%)	21 (84%)	4 (16%)	3	5
3	J	25/341 (7%)	25 (100%)	0	100	100
All	All	2276/2958 (77%)	2224 (98%)	52 (2%)	58	83

All (52) residues with a non-rotameric sidechain are listed below:

Mol	Chain	Res	Type
1	A	55	TYR
1	A	173	ASP
1	A	311	GLU
1	A	314	GLU
1	A	329	ILE
2	B	131	SER
2	B	171	GLU
2	B	173	LEU
2	B	176	TYR
2	B	196	ASP
1	C	71	ARG
1	C	142	ILE
1	C	173	ASP
1	C	215	VAL
1	C	217	LYS
1	C	233	VAL
1	C	319	GLU
1	C	329	ILE
2	D	32	VAL
3	I	132	MET
3	I	133	PRO
3	I	136	ARG

*Continued on next page...*

*Continued from previous page...*

Mol	Chain	Res	Type
3	I	157	ARG
1	E	6	GLN
1	E	40	GLU
1	E	44	GLU
1	E	147	GLN
1	E	212	LYS
1	E	231	ILE
1	E	254	ASN
1	E	282	ARG
1	E	329	ILE
2	F	130	ASP
2	F	136	VAL
2	F	176	TYR
2	F	200	GLU
2	F	244	GLU
2	F	281	ILE
1	G	4	THR
1	G	35	GLU
1	G	38	MET
1	G	71	ARG
1	G	130	GLN
1	G	163	LYS
1	G	164	LYS
1	G	173	ASP
1	G	364	GLU
2	H	19	ASN
2	H	81	GLN
2	H	180	ARG
2	H	187	GLU
2	H	277	ASN

Some sidechains can be flipped to improve hydrogen bonding and reduce clashes. All (35) such sidechains are listed below:

Mol	Chain	Res	Type
1	A	271	HIS
1	A	288	ASN
1	A	320	GLN
2	B	128	HIS
2	B	138	GLN
1	C	69	GLN
1	C	338	GLN
2	D	2	GLN

*Continued on next page...*

*Continued from previous page...*

Mol	Chain	Res	Type
2	D	19	ASN
2	D	271	ASN
2	D	302	GLN
1	E	6	GLN
1	E	147	GLN
1	E	178	GLN
1	E	254	ASN
1	E	315	ASN
2	F	7	GLN
2	F	33	ASN
2	F	123	HIS
2	F	138	GLN
2	F	239	GLN
2	F	265	GLN
1	G	69	GLN
1	G	130	GLN
1	G	200	GLN
1	G	254	ASN
1	G	288	ASN
1	G	316	ASN
2	H	19	ASN
2	H	72	GLN
2	H	81	GLN
2	H	123	HIS
2	H	138	GLN
2	H	302	GLN
3	J	155	ASN

### 5.3.3 RNA ⓘ

There are no RNA molecules in this entry.

### 5.4 Non-standard residues in protein, DNA, RNA chains ⓘ

There are no non-standard protein/DNA/RNA residues in this entry.

### 5.5 Carbohydrates ⓘ

There are no carbohydrates in this entry.

## 5.6 Ligand geometry

Of 11 ligands modelled in this entry, 7 are monoatomic - leaving 4 for Mogul analysis.

In the following table, the Counts columns list the number of bonds (or angles) for which Mogul statistics could be retrieved, the number of bonds (or angles) that are observed in the model and the number of bonds (or angles) that are defined in the chemical component dictionary. The Link column lists molecule types, if any, to which the group is linked. The Z score for a bond length (or angle) is the number of standard deviations the observed value is removed from the expected value. A bond length (or angle) with  $|Z| > 2$  is considered an outlier worth inspection. RMSZ is the root-mean-square of all Z scores of the bond lengths (or angles).

Mol	Type	Chain	Res	Link	Bond lengths			Bond angles		
					Counts	RMSZ	$\# Z  > 2$	Counts	RMSZ	$\# Z  > 2$
6	R1T	A	1370	4	25,30,30	1.16	1 (4%)	32,45,45	1.56	6 (18%)
6	R1T	C	1370	4	25,30,30	1.18	1 (4%)	32,45,45	1.54	6 (18%)
6	R1T	E	1370	4	25,30,30	5.96	11 (44%)	32,45,45	1.83	11 (34%)
6	R1T	G	1370	4	25,30,30	6.24	14 (56%)	32,45,45	1.73	9 (28%)

In the following table, the Chirals column lists the number of chiral outliers, the number of chiral centers analysed, the number of these observed in the model and the number defined in the chemical component dictionary. Similar counts are reported in the Torsion and Rings columns. '-' means no outliers of that kind were identified.

Mol	Type	Chain	Res	Link	Chirals	Torsions	Rings
6	R1T	A	1370	4	-	0/16/21/21	0/2/2/2
6	R1T	C	1370	4	-	0/16/21/21	0/2/2/2
6	R1T	E	1370	4	-	0/16/21/21	0/2/2/2
6	R1T	G	1370	4	-	0/16/21/21	0/2/2/2

All (27) bond length outliers are listed below:

Mol	Chain	Res	Type	Atoms	Z	Observed(Å)	Ideal(Å)
6	G	1370	R1T	C5-S1	-21.86	1.33	1.74
6	E	1370	R1T	C2-S1	-21.24	1.34	1.74
6	G	1370	R1T	C2-S1	-17.63	1.41	1.74
6	E	1370	R1T	C5-S1	-16.50	1.43	1.74
6	G	1370	R1T	C7'-C5'	-6.87	1.39	1.52
6	E	1370	R1T	C7'-C5'	-6.16	1.40	1.52
6	E	1370	R1T	PB-O3B	-4.51	1.38	1.54
6	G	1370	R1T	PA-O2A	-4.44	1.36	1.54
6	G	1370	R1T	PB-O1B	-4.41	1.36	1.51
6	G	1370	R1T	CM2-C2'	-4.34	1.35	1.49
6	E	1370	R1T	PB-O2B	-4.26	1.39	1.54

*Continued on next page...*

*Continued from previous page...*

Mol	Chain	Res	Type	Atoms	Z	Observed(Å)	Ideal(Å)
6	E	1370	R1T	CM2-C2'	-4.26	1.36	1.49
6	E	1370	R1T	PB-O1B	-4.15	1.37	1.51
6	G	1370	R1T	PB-O2B	-4.03	1.40	1.54
6	E	1370	R1T	PA-O2A	-3.88	1.38	1.54
6	G	1370	R1T	PB-O3B	-3.61	1.41	1.54
6	G	1370	R1T	PA-O7	-3.38	1.43	1.59
6	G	1370	R1T	C4'-N3'	-2.65	1.30	1.35
6	E	1370	R1T	PA-O1A	-2.58	1.41	1.51
6	G	1370	R1T	PA-O1A	-2.50	1.42	1.51
6	E	1370	R1T	C4'-N3'	-2.26	1.31	1.35
6	G	1370	R1T	C3-C4	-2.19	1.31	1.37
6	E	1370	R1T	PA-O7	-2.12	1.49	1.59
6	G	1370	R1T	C2'-N3'	-2.06	1.30	1.34
6	G	1370	R1T	C2-CP1	2.25	1.54	1.51
6	C	1370	R1T	PB-O1B	3.10	1.61	1.51
6	A	1370	R1T	PB-O1B	3.11	1.61	1.51

All (32) bond angle outliers are listed below:

Mol	Chain	Res	Type	Atoms	Z	Observed(°)	Ideal(°)
6	G	1370	R1T	C5'-C6'-N1'	-3.49	117.80	123.86
6	E	1370	R1T	CP2-CP1-C2	-3.30	106.77	112.24
6	C	1370	R1T	PA-O3A-PB	-3.03	122.51	132.67
6	A	1370	R1T	PA-O3A-PB	-2.99	122.63	132.67
6	A	1370	R1T	N1'-C2'-N3'	-2.83	120.36	125.60
6	E	1370	R1T	C7'-C5'-C6'	-2.80	117.56	121.72
6	C	1370	R1T	N1'-C2'-N3'	-2.77	120.47	125.60
6	C	1370	R1T	C7'-C5'-C6'	-2.43	118.12	121.72
6	E	1370	R1T	C5'-C6'-N1'	-2.38	119.73	123.86
6	A	1370	R1T	C7'-C5'-C6'	-2.29	118.32	121.72
6	E	1370	R1T	N1'-C2'-N3'	-2.21	121.50	125.60
6	G	1370	R1T	N1'-C2'-N3'	-2.19	121.55	125.60
6	G	1370	R1T	C5'-C4'-N4'	-2.14	119.11	122.25
6	G	1370	R1T	CP2-CP1-C2	2.00	115.56	112.24
6	E	1370	R1T	O3B-PB-O1B	2.03	117.11	110.58
6	C	1370	R1T	N4'-C4'-N3'	2.07	119.94	116.95
6	E	1370	R1T	CM2-C2'-N1'	2.15	119.61	117.03
6	A	1370	R1T	N4'-C4'-N3'	2.23	120.17	116.95
6	A	1370	R1T	CM2-C2'-N1'	2.39	119.89	117.03
6	G	1370	R1T	O3B-PB-O1B	2.39	118.27	110.58
6	C	1370	R1T	CM2-C2'-N1'	2.43	119.94	117.03
6	E	1370	R1T	O2B-PB-O1B	2.55	118.78	110.58

*Continued on next page...*

*Continued from previous page...*

Mol	Chain	Res	Type	Atoms	Z	Observed(°)	Ideal(°)
6	E	1370	R1T	O3B-PB-O2B	2.81	118.09	107.38
6	E	1370	R1T	C6'-N1'-C2'	2.81	120.69	115.77
6	G	1370	R1T	CM2-C2'-N1'	2.99	120.61	117.03
6	C	1370	R1T	C6'-N1'-C2'	2.99	120.99	115.77
6	G	1370	R1T	O3B-PB-O2B	3.05	119.00	107.38
6	A	1370	R1T	C6'-N1'-C2'	3.08	121.16	115.77
6	G	1370	R1T	C6'-N1'-C2'	3.38	121.68	115.77
6	E	1370	R1T	C7'-C5'-C4'	3.52	126.71	122.21
6	E	1370	R1T	C6-C5-S1	3.90	125.69	120.24
6	G	1370	R1T	C6-C5-S1	4.26	126.20	120.24

There are no chirality outliers.

There are no torsion outliers.

There are no ring outliers.

4 monomers are involved in 15 short contacts:

Mol	Chain	Res	Type	Clashes	Symm-Clashes
6	A	1370	R1T	2	0
6	C	1370	R1T	2	0
6	E	1370	R1T	6	0
6	G	1370	R1T	5	0

## 5.7 Other polymers [i](#)

There are no such residues in this entry.

## 5.8 Polymer linkage issues [i](#)

There are no chain breaks in this entry.



## 6 Fit of model and data ⓘ

### 6.1 Protein, DNA and RNA chains ⓘ

In the following table, the column labelled ‘#RSRZ> 2’ contains the number (and percentage) of RSRZ outliers, followed by percent RSRZ outliers for the chain as percentile scores relative to all X-ray entries and entries of similar resolution. The OWAB column contains the minimum, median, 95<sup>th</sup> percentile and maximum values of the occupancy-weighted average B-factor per residue. The column labelled ‘Q< 0.9’ lists the number of (and percentage) of residues with an average occupancy less than 0.9.

Mol	Chain	Analysed	<RSRZ>	#RSRZ>2	OWAB(Å <sup>2</sup> )	Q<0.9
1	A	365/369 (98%)	-0.33	1 (0%) 94 95	24, 37, 63, 80	2 (0%)
1	C	365/369 (98%)	-0.31	2 (0%) 91 92	20, 37, 63, 90	2 (0%)
1	E	365/369 (98%)	-0.19	7 (1%) 70 73	24, 45, 75, 96	2 (0%)
1	G	365/369 (98%)	-0.23	4 (1%) 82 84	28, 42, 66, 81	2 (0%)
2	B	324/325 (99%)	-0.30	1 (0%) 94 95	21, 38, 57, 65	0
2	D	324/325 (99%)	-0.34	2 (0%) 90 91	22, 34, 50, 61	0
2	F	324/325 (99%)	-0.15	4 (1%) 81 83	28, 43, 60, 69	0
2	H	324/325 (99%)	-0.27	0 100 100	24, 38, 53, 63	0
3	I	38/428 (8%)	0.32	2 (5%) 30 34	52, 68, 84, 93	0
3	J	36/428 (8%)	0.30	3 (8%) 14 15	54, 71, 89, 96	0
All	All	2830/3632 (77%)	-0.25	26 (0%) 85 88	20, 40, 65, 96	8 (0%)

All (26) RSRZ outliers are listed below:

Mol	Chain	Res	Type	RSRZ
3	I	132	MET	4.8
3	J	145	ASP	4.2
1	E	165	ALA	3.0
1	C	290	TRP	2.9
2	F	223	LEU	2.8
1	A	282	ARG	2.8
2	F	204	ILE	2.7
3	J	146	ILE	2.6
1	G	268	TYR	2.6
2	F	57	LEU	2.6
1	G	217	LYS	2.6
1	G	343	LEU	2.5
1	C	268	TYR	2.4

*Continued on next page...*

*Continued from previous page...*

Mol	Chain	Res	Type	RSRZ
2	D	324	PHE	2.3
1	E	290	TRP	2.3
1	E	278	PRO	2.3
1	E	26	LEU	2.3
1	E	298	ARG	2.3
3	J	132	MET	2.2
1	E	346	ILE	2.2
2	D	57	LEU	2.1
2	B	196	ASP	2.1
2	F	1	ALA	2.1
3	I	133	PRO	2.1
1	E	286	LEU	2.0
1	G	180	ASP	2.0

## 6.2 Non-standard residues in protein, DNA, RNA chains [i](#)

There are no non-standard protein/DNA/RNA residues in this entry.

## 6.3 Carbohydrates [i](#)

There are no carbohydrates in this entry.

## 6.4 Ligands [i](#)

In the following table, the Atoms column lists the number of modelled atoms in the group and the number defined in the chemical component dictionary. LLDF column lists the quality of electron density of the group with respect to its neighbouring residues in protein, DNA or RNA chains. The B-factors column lists the minimum, median, 95<sup>th</sup> percentile and maximum values of B factors of atoms in the group. The column labelled 'Q< 0.9' lists the number of atoms with occupancy less than 0.9.

Mol	Type	Chain	Res	Atoms	RSCC	RSR	LLDF	B-factors(Å <sup>2</sup> )	Q<0.9
4	MG	D	1326	1/1	0.90	0.27	2.52	64,64,64,64	0
4	MG	C	1368	1/1	0.97	0.18	1.96	33,33,33,33	0
4	MG	A	1368	1/1	0.98	0.16	0.71	17,17,17,17	0
4	MG	E	1371	1/1	0.97	0.13	0.26	37,37,37,37	0
6	R1T	C	1370	29/29	0.98	0.16	0.21	19,31,38,43	0
5	K	D	1325	1/1	0.99	0.12	-0.16	32,32,32,32	0
6	R1T	A	1370	29/29	0.98	0.12	-0.51	15,27,37,43	0
6	R1T	E	1370	29/29	0.97	0.11	-0.75	25,36,50,54	0

*Continued on next page...*

*Continued from previous page...*

Mol	Type	Chain	Res	Atoms	RSCC	RSR	LLDF	B-factors( $\text{\AA}^2$ )	Q<0.9
6	R1T	G	1370	29/29	0.97	0.12	-0.78	20,34,45,63	0
5	K	B	1325	1/1	0.98	0.12	-0.91	52,52,52,52	0
4	MG	G	1371	1/1	0.96	0.08	-1.23	23,23,23,23	0

## 6.5 Other polymers

There are no such residues in this entry.