



# Full wwPDB X-ray Structure Validation Report ⓘ

Nov 2, 2016 – 01:59 PM EDT

PDB ID : 5EI5  
Title : Crystal structure of MSF-aged Torpedo californica Acetylcholinesterase in complex with alkylene-linked bis-tacrine dimer (7 carbon linker)  
Authors : Pesaresi, A.; Lamba, D.  
Deposited on : 2015-10-29  
Resolution : 2.10 Å(reported)

This is a Full wwPDB X-ray Structure Validation Report for a publicly released PDB entry.

We welcome your comments at [validation@mail.wwpdb.org](mailto:validation@mail.wwpdb.org)

A user guide is available at

<http://wwpdb.org/validation/2016/XrayValidationReportHelp>

with specific help available everywhere you see the ⓘ symbol.

---

The following versions of software and data (see [references ⓘ](#)) were used in the production of this report:

MolProbity : 4.02b-467  
Mogul : 1.7.1 (RC1), CSD as537be (2016)  
Xtriage (Phenix) : 1.9-1692  
EDS : rb-20028320  
Percentile statistics : 20151230.v01 (using entries in the PDB archive December 30th 2015)  
Refmac : 5.8.0135  
CCP4 : 6.5.0  
Ideal geometry (proteins) : Engh & Huber (2001)  
Ideal geometry (DNA, RNA) : Parkinson et al. (1996)  
Validation Pipeline (wwPDB-VP) : rb-20028320

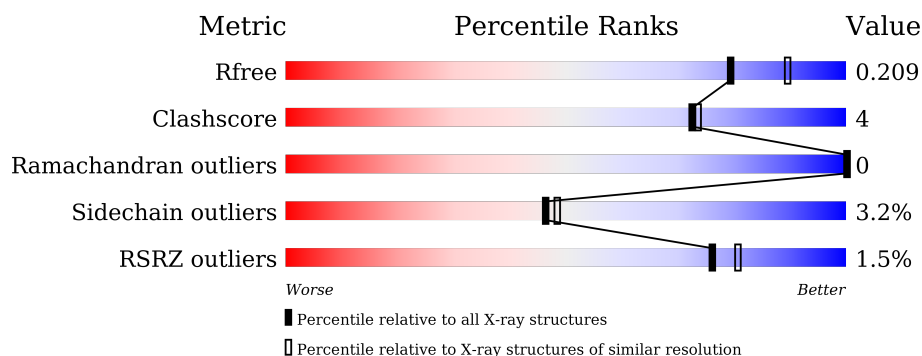
# 1 Overall quality at a glance

The following experimental techniques were used to determine the structure:

## *X-RAY DIFFRACTION*

The reported resolution of this entry is 2.10 Å.

Percentile scores (ranging between 0-100) for global validation metrics of the entry are shown in the following graphic. The table shows the number of entries on which the scores are based.



Metric	Whole archive (#Entries)	Similar resolution (#Entries, resolution range(Å))
$R_{free}$	91344	3939 (2.10-2.10)
Clashscore	102246	4460 (2.10-2.10)
Ramachandran outliers	100387	4413 (2.10-2.10)
Sidechain outliers	100360	4414 (2.10-2.10)
RSRZ outliers	91569	3948 (2.10-2.10)

The table below summarises the geometric issues observed across the polymeric chains and their fit to the electron density. The red, orange, yellow and green segments on the lower bar indicate the fraction of residues that contain outliers for  $\geq 3$ , 2, 1 and 0 types of geometric quality criteria. A grey segment represents the fraction of residues that are not modelled. The numeric value for each fraction is indicated below the corresponding segment, with a dot representing fractions  $\leq 5\%$ . The upper red bar (where present) indicates the fraction of residues that have poor fit to the electron density. The numeric value is given above the bar.

Mol	Chain	Length	Quality of chain
1	A	534	

The following table lists non-polymeric compounds, carbohydrate monomers and non-standard residues in protein, DNA, RNA chains that are outliers for geometric or electron-density-fit criteria:

Mol	Type	Chain	Res	Chirality	Geometry	Clashes	Electron density
3	03S	A	605	-	X	-	-
4	AA7	A	606	-	-	-	X

## 2 Entry composition [i](#)

There are 5 unique types of molecules in this entry. The entry contains 4724 atoms, of which 0 are hydrogens and 0 are deuteriums.

In the tables below, the ZeroOcc column contains the number of atoms modelled with zero occupancy, the AltConf column contains the number of residues with at least one atom in alternate conformation and the Trace column contains the number of residues modelled with at most 2 atoms.

- Molecule 1 is a protein called Acetylcholinesterase.

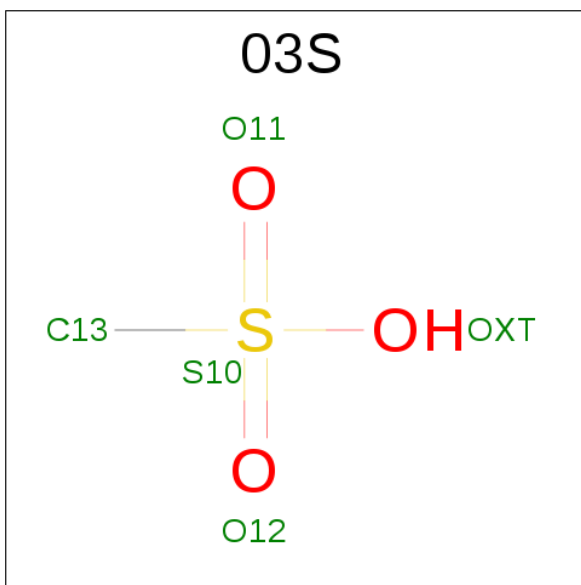
Mol	Chain	Residues	Atoms					ZeroOcc	AltConf	Trace
1	A	534	Total	C	N	O	S	0	0	0
			4263	2731	724	786	22			

- Molecule 2 is N-ACETYL-D-GLUCOSAMINE (three-letter code: NAG) (formula:  $C_8H_{15}NO_6$ ).



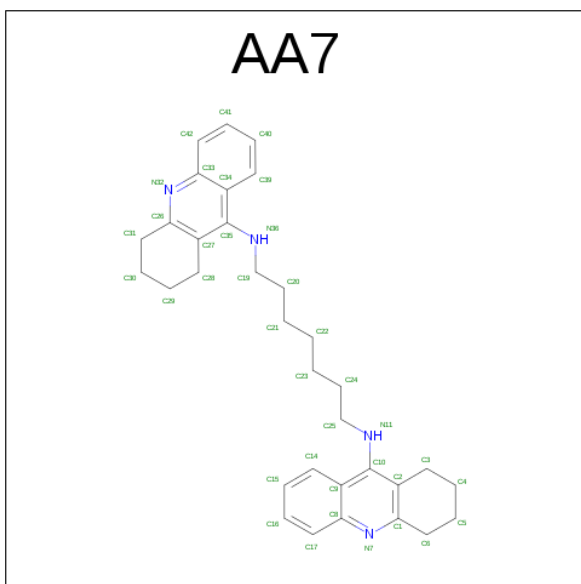
Mol	Chain	Residues	Atoms				ZeroOcc	AltConf
2	A	1	Total	C	N	O	0	0
			14	8	1	5		
2	A	1	Total	C	N	O	0	0
			14	8	1	5		
2	A	1	Total	C	N	O	0	0
			14	8	1	5		
2	A	1	Total	C	N	O	0	0
			14	8	1	5		

- Molecule 3 is methanesulfonic acid (three-letter code: 03S) (formula:  $CH_4O_3S$ ).



Mol	Chain	Residues	Atoms				ZeroOcc	AltConf
3	A	1	Total	C	O	S	0	0
			4	1	2	1		

- Molecule 4 is N,N'-DI-1,2,3,4-TETRAHYDROACRIDIN-9-YLHEPTANE-1,7-DIAMINE (three-letter code: AA7) (formula: C<sub>33</sub>H<sub>40</sub>N<sub>4</sub>).



Mol	Chain	Residues	Atoms			ZeroOcc	AltConf
4	A	1	Total	C	N	0	0
			37	33	4		

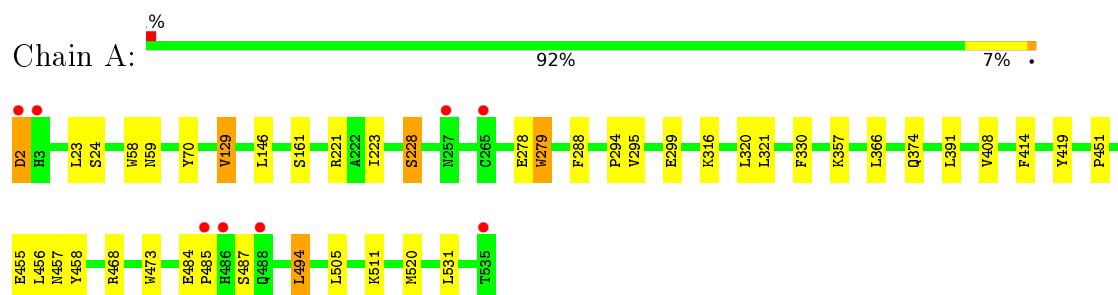
- Molecule 5 is water.

Mol	Chain	Residues	Atoms		ZeroOcc	AltConf
5	A	364	Total 364	O 364	0	0

### 3 Residue-property plots

These plots are drawn for all protein, RNA and DNA chains in the entry. The first graphic for a chain summarises the proportions of errors displayed in the second graphic. The second graphic shows the sequence view annotated by issues in geometry and electron density. Residues are color-coded according to the number of geometric quality criteria for which they contain at least one outlier: green = 0, yellow = 1, orange = 2 and red = 3 or more. A red dot above a residue indicates a poor fit to the electron density ( $RSRZ > 2$ ). Stretches of 2 or more consecutive residues without any outlier are shown as a green connector. Residues present in the sample, but not in the model, are shown in grey.

- Molecule 1: Acetylcholinesterase



## 4 Data and refinement statistics

Property	Value	Source
Space group	P 31 2 1	Depositor
Cell constants a, b, c, $\alpha$ , $\beta$ , $\gamma$	111.28Å 111.28Å 136.74Å 90.00° 90.00° 120.00°	Depositor
Resolution (Å)	48.23 – 2.10 48.19 – 2.10	Depositor EDS
% Data completeness (in resolution range)	99.2 (48.23-2.10) 99.3 (48.19-2.10)	Depositor EDS
$R_{merge}$	0.22	Depositor
$R_{sym}$	(Not available)	Depositor
$\langle I/\sigma(I) \rangle$ <sup>1</sup>	3.13 (at 2.10Å)	Xtriage
Refinement program	REFMAC 5.7.0032	Depositor
R, $R_{free}$	0.173 , 0.206 0.186 , 0.209	Depositor DCC
$R_{free}$ test set	2898 reflections (5.34%)	DCC
Wilson B-factor (Å <sup>2</sup> )	27.5	Xtriage
Anisotropy	0.108	Xtriage
Bulk solvent $k_{sol}$ (e/Å <sup>3</sup> ), $B_{sol}$ (Å <sup>2</sup> )	0.35 , 53.7	EDS
L-test for twinning <sup>2</sup>	$\langle  L  \rangle = 0.49$ , $\langle L^2 \rangle = 0.32$	Xtriage
Estimated twinning fraction	0.027 for -h,-k,l	Xtriage
$F_o, F_c$ correlation	0.95	EDS
Total number of atoms	4724	wwPDB-VP
Average B, all atoms (Å <sup>2</sup> )	28.0	wwPDB-VP

Xtriage's analysis on translational NCS is as follows: *The largest off-origin peak in the Patterson function is 3.71% of the height of the origin peak. No significant pseudotranslation is detected.*

<sup>1</sup>Intensities estimated from amplitudes.

<sup>2</sup>Theoretical values of  $\langle |L| \rangle$ ,  $\langle L^2 \rangle$  for acentric reflections are 0.5, 0.333 respectively for untwinned datasets, and 0.375, 0.2 for perfectly twinned datasets.

## 5 Model quality [i](#)

### 5.1 Standard geometry [i](#)

Bond lengths and bond angles in the following residue types are not validated in this section: 03S, AA7, NAG

The Z score for a bond length (or angle) is the number of standard deviations the observed value is removed from the expected value. A bond length (or angle) with  $|Z| > 5$  is considered an outlier worth inspection. RMSZ is the root-mean-square of all Z scores of the bond lengths (or angles).

Mol	Chain	Bond lengths		Bond angles	
		RMSZ	$\# Z  > 5$	RMSZ	$\# Z  > 5$
1	A	1.03	3/4387 (0.1%)	0.96	3/5955 (0.1%)

All (3) bond length outliers are listed below:

Mol	Chain	Res	Type	Atoms	Z	Observed(Å)	Ideal(Å)
1	A	58	TRP	C-N	-8.05	1.15	1.34
1	A	228	SER	CB-OG	-7.11	1.33	1.42
1	A	59	ASN	C-N	-6.11	1.20	1.34

All (3) bond angle outliers are listed below:

Mol	Chain	Res	Type	Atoms	Z	Observed(°)	Ideal(°)
1	A	129	VAL	CB-CA-C	-7.70	96.77	111.40
1	A	494	LEU	CA-CB-CG	6.57	130.41	115.30
1	A	221	ARG	NE-CZ-NH2	-5.01	117.80	120.30

There are no chirality outliers.

There are no planarity outliers.

### 5.2 Too-close contacts [i](#)

In the following table, the Non-H and H(model) columns list the number of non-hydrogen atoms and hydrogen atoms in the chain respectively. The H(added) column lists the number of hydrogen atoms added and optimized by MolProbity. The Clashes column lists the number of clashes within the asymmetric unit, whereas Symm-Clashes lists symmetry related clashes.

Mol	Chain	Non-H	H(model)	H(added)	Clashes	Symm-Clashes
1	A	4263	0	4102	28	0
2	A	56	0	51	1	0

*Continued on next page...*



*Continued from previous page...*

Mol	Chain	Non-H	H(model)	H(added)	Clashes	Symm-Clashes
3	A	4	0	3	0	0
4	A	37	0	40	17	0
5	A	364	0	0	2	0
All	All	4724	0	4196	36	0

The all-atom clashscore is defined as the number of clashes found per 1000 atoms (including hydrogen atoms). The all-atom clashscore for this structure is 4.

All (36) close contacts within the same asymmetric unit are listed below, sorted by their clash magnitude.

Atom-1	Atom-2	Interatomic distance (Å)	Clash overlap (Å)
1:A:70:TYR:HB2	4:A:606:AA7:H5C2	1.26	1.09
1:A:70:TYR:CB	4:A:606:AA7:H5C2	2.06	0.83
4:A:606:AA7:C28	4:A:606:AA7:H191	2.13	0.78
1:A:279:TRP:CE3	4:A:606:AA7:H4C1	2.24	0.72
1:A:279:TRP:CZ3	4:A:606:AA7:H4C1	2.27	0.69
4:A:606:AA7:H191	4:A:606:AA7:H281	1.77	0.64
4:A:606:AA7:H251	4:A:606:AA7:H14	1.79	0.64
4:A:606:AA7:H191	4:A:606:AA7:H282	1.80	0.62
1:A:330:PHE:CZ	4:A:606:AA7:H201	2.37	0.60
1:A:223:ILE:HA	1:A:320:LEU:O	2.06	0.55
4:A:606:AA7:C28	4:A:606:AA7:C19	2.85	0.54
1:A:468:ARG:HD3	5:A:711:HOH:O	2.07	0.53
1:A:374:GLN:HE21	1:A:520:MET:CE	2.21	0.52
4:A:606:AA7:H192	5:A:746:HOH:O	2.08	0.52
1:A:23:LEU:O	1:A:24:SER:HB2	2.10	0.51
1:A:321:LEU:HD11	1:A:408:VAL:CG2	2.40	0.51
1:A:451:PRO:HA	1:A:458:TYR:CD1	2.45	0.51
1:A:279:TRP:HB2	4:A:606:AA7:N7	2.27	0.49
1:A:330:PHE:HZ	4:A:606:AA7:H201	1.74	0.49
4:A:606:AA7:H14	4:A:606:AA7:C25	2.42	0.49
1:A:484:GLU:HB3	1:A:487:SER:HB3	1.94	0.49
2:A:602:NAG:H61	2:A:603:NAG:C1	2.44	0.47
1:A:316:LYS:HE3	1:A:414:PHE:HB3	1.95	0.46
1:A:146:LEU:C	1:A:146:LEU:HD12	2.36	0.46
1:A:419:TYR:CZ	1:A:494:LEU:HD13	2.51	0.46
1:A:23:LEU:O	1:A:24:SER:CB	2.64	0.45
1:A:278:GLU:OE1	4:A:606:AA7:H5C1	2.16	0.45
1:A:484:GLU:OE1	1:A:485:PRO:HD2	2.18	0.44
1:A:531:LEU:C	1:A:531:LEU:HD23	2.38	0.43
1:A:330:PHE:CE1	4:A:606:AA7:H281	2.54	0.43

*Continued on next page...*

*Continued from previous page...*

Atom-1	Atom-2	Interatomic distance (Å)	Clash overlap (Å)
1:A:456:LEU:O	1:A:457:ASN:HB2	2.18	0.42
1:A:2:ASP:OD1	1:A:2:ASP:N	2.51	0.42
1:A:320:LEU:C	1:A:320:LEU:HD23	2.40	0.42
1:A:330:PHE:CD1	4:A:606:AA7:H301	2.55	0.41
1:A:455:GLU:CD	1:A:455:GLU:H	2.23	0.41
1:A:321:LEU:HD11	1:A:408:VAL:HG23	2.02	0.40

There are no symmetry-related clashes.

## 5.3 Torsion angles [i](#)

### 5.3.1 Protein backbone [i](#)

In the following table, the Percentiles column shows the percent Ramachandran outliers of the chain as a percentile score with respect to all X-ray entries followed by that with respect to entries of similar resolution.

The Analysed column shows the number of residues for which the backbone conformation was analysed, and the total number of residues.

Mol	Chain	Analysed	Favoured	Allowed	Outliers	Percentiles	
1	A	532/534 (100%)	508 (96%)	24 (4%)	0	100	100

There are no Ramachandran outliers to report.

### 5.3.2 Protein sidechains [i](#)

In the following table, the Percentiles column shows the percent sidechain outliers of the chain as a percentile score with respect to all X-ray entries followed by that with respect to entries of similar resolution.

The Analysed column shows the number of residues for which the sidechain conformation was analysed, and the total number of residues.

Mol	Chain	Analysed	Rotameric	Outliers	Percentiles	
1	A	467/467 (100%)	452 (97%)	15 (3%)	46	48

All (15) residues with a non-rotameric sidechain are listed below:

Mol	Chain	Res	Type
1	A	2	ASP
1	A	129	VAL
1	A	161	SER
1	A	228	SER
1	A	279	TRP
1	A	288	PHE
1	A	294	PRO
1	A	295	VAL
1	A	299	GLU
1	A	357	LYS
1	A	366	LEU
1	A	391	LEU
1	A	473	TRP
1	A	505	LEU
1	A	511	LYS

Some sidechains can be flipped to improve hydrogen bonding and reduce clashes. All (1) such sidechains are listed below:

Mol	Chain	Res	Type
1	A	374	GLN

### 5.3.3 RNA ⓘ

There are no RNA molecules in this entry.

## 5.4 Non-standard residues in protein, DNA, RNA chains ⓘ

1 non-standard protein/DNA/RNA residue is modelled in this entry.

In the following table, the Counts columns list the number of bonds (or angles) for which Mogul statistics could be retrieved, the number of bonds (or angles) that are observed in the model and the number of bonds (or angles) that are defined in the chemical component dictionary. The Link column lists molecule types, if any, to which the group is linked. The Z score for a bond length (or angle) is the number of standard deviations the observed value is removed from the expected value. A bond length (or angle) with  $|Z| > 2$  is considered an outlier worth inspection. RMSZ is the root-mean-square of all Z scores of the bond lengths (or angles).

Mol	Type	Chain	Res	Link	Bond lengths			Bond angles		
					Counts	RMSZ	$\# Z  > 2$	Counts	RMSZ	$\# Z  > 2$
2	NAG	A	604	1	14,14,15	0.73	0	15,19,21	1.74	3 (20%)

In the following table, the Chirals column lists the number of chiral outliers, the number of chiral

centers analysed, the number of these observed in the model and the number defined in the chemical component dictionary. Similar counts are reported in the Torsion and Rings columns. '-' means no outliers of that kind were identified.

Mol	Type	Chain	Res	Link	Chirals	Torsions	Rings
2	NAG	A	604	1	-	0/6/23/26	0/1/1/1

There are no bond length outliers.

All (3) bond angle outliers are listed below:

Mol	Chain	Res	Type	Atoms	Z	Observed(°)	Ideal(°)
2	A	604	NAG	C3-C4-C5	-3.11	104.69	110.23
2	A	604	NAG	O5-C5-C6	3.11	114.00	107.34
2	A	604	NAG	C1-O5-C5	3.71	117.59	112.14

There are no chirality outliers.

There are no torsion outliers.

There are no ring outliers.

No monomer is involved in short contacts.

## 5.5 Carbohydrates [i](#)

There are no carbohydrates in this entry.

## 5.6 Ligand geometry [i](#)

6 ligands are modelled in this entry.

In the following table, the Counts columns list the number of bonds (or angles) for which Mogul statistics could be retrieved, the number of bonds (or angles) that are observed in the model and the number of bonds (or angles) that are defined in the chemical component dictionary. The Link column lists molecule types, if any, to which the group is linked. The Z score for a bond length (or angle) is the number of standard deviations the observed value is removed from the expected value. A bond length (or angle) with  $|Z| > 2$  is considered an outlier worth inspection. RMSZ is the root-mean-square of all Z scores of the bond lengths (or angles).

Mol	Type	Chain	Res	Link	Bond lengths			Bond angles		
					Counts	RMSZ	$\# Z  > 2$	Counts	RMSZ	$\# Z  > 2$
2	NAG	A	601	1	14,14,15	0.28	0	15,19,21	0.53	0
2	NAG	A	602	1,2	14,14,15	0.54	0	15,19,21	1.50	3 (20%)
2	NAG	A	603	2	14,14,15	0.28	0	15,19,21	0.53	0
2	NAG	A	604	1	14,14,15	0.73	0	15,19,21	1.74	3 (20%)

Mol	Type	Chain	Res	Link	Bond lengths			Bond angles		
					Counts	RMSZ	# Z  > 2	Counts	RMSZ	# Z  > 2
3	03S	A	605	1	1,3,4	3.59	1 (100%)	2,3,6	5.35	2 (100%)
4	AA7	A	606	-	40,42,42	2.82	11 (27%)	53,57,57	1.72	10 (18%)

In the following table, the Chirals column lists the number of chiral outliers, the number of chiral centers analysed, the number of these observed in the model and the number defined in the chemical component dictionary. Similar counts are reported in the Torsion and Rings columns. '-' means no outliers of that kind were identified.

Mol	Type	Chain	Res	Link	Chirals	Torsions	Rings
2	NAG	A	601	1	-	0/6/23/26	0/1/1/1
2	NAG	A	602	1,2	-	0/6/23/26	0/1/1/1
2	NAG	A	603	2	-	0/6/23/26	0/1/1/1
2	NAG	A	604	1	-	0/6/23/26	0/1/1/1
3	03S	A	605	1	-	0/0/0/0	0/0/0/0
4	AA7	A	606	-	-	0/12/26/26	0/6/6/6

All (12) bond length outliers are listed below:

Mol	Chain	Res	Type	Atoms	Z	Observed(Å)	Ideal(Å)
4	A	606	AA7	C31-C26	-8.35	1.37	1.50
4	A	606	AA7	C28-C27	-8.33	1.38	1.51
4	A	606	AA7	C3-C2	-7.25	1.40	1.51
4	A	606	AA7	C6-C1	-7.10	1.39	1.50
4	A	606	AA7	C33-N32	-3.79	1.31	1.37
3	A	605	03S	C13-S10	-3.59	1.60	1.78
4	A	606	AA7	C35-C34	-3.14	1.38	1.43
4	A	606	AA7	C34-C33	-2.96	1.38	1.42
4	A	606	AA7	C8-N7	-2.82	1.32	1.37
4	A	606	AA7	C10-C9	-2.32	1.39	1.43
4	A	606	AA7	C14-C9	-2.30	1.37	1.42
4	A	606	AA7	C9-C8	-2.09	1.39	1.42

All (18) bond angle outliers are listed below:

Mol	Chain	Res	Type	Atoms	Z	Observed(°)	Ideal(°)
4	A	606	AA7	C34-C33-N32	-3.91	119.30	122.89
2	A	604	NAG	C3-C4-C5	-3.11	104.69	110.23
4	A	606	AA7	C27-C26-N32	-2.85	120.83	123.30
4	A	606	AA7	C9-C8-N7	-2.81	120.31	122.89
2	A	602	NAG	C1-O5-C5	-2.00	109.19	112.14
4	A	606	AA7	C27-C35-N36	2.31	122.88	119.53
4	A	606	AA7	C5-C6-C1	2.40	117.50	113.47

*Continued on next page...*

*Continued from previous page...*

Mol	Chain	Res	Type	Atoms	Z	Observed(°)	Ideal(°)
2	A	602	NAG	O6-C6-C5	2.42	119.38	111.30
4	A	606	AA7	C17-C8-C9	2.43	121.68	119.09
4	A	606	AA7	C30-C31-C26	2.47	117.60	113.47
4	A	606	AA7	C29-C28-C27	2.57	118.29	113.14
2	A	602	NAG	O5-C5-C6	2.92	113.59	107.34
2	A	604	NAG	O5-C5-C6	3.11	114.00	107.34
2	A	604	NAG	C1-O5-C5	3.71	117.59	112.14
3	A	605	03S	O11-S10-C13	3.81	110.64	105.63
4	A	606	AA7	C1-N7-C8	4.28	122.51	117.67
4	A	606	AA7	C26-N32-C33	5.47	123.86	117.67
3	A	605	03S	O12-S10-C13	6.54	114.23	105.63

There are no chirality outliers.

There are no torsion outliers.

There are no ring outliers.

3 monomers are involved in 18 short contacts:

Mol	Chain	Res	Type	Clashes	Symm-Clashes
2	A	602	NAG	1	0
2	A	603	NAG	1	0
4	A	606	AA7	17	0

## 5.7 Other polymers [i](#)

There are no such residues in this entry.

## 5.8 Polymer linkage issues [i](#)

The following chains have linkage breaks:

Mol	Chain	Number of breaks
1	A	2

All chain breaks are listed below:

Model	Chain	Residue-1	Atom-1	Residue-2	Atom-2	Distance (Å)
1	A	59:ASN	C	60:ALA	N	1.20
1	A	58:TRP	C	59:ASN	N	1.15

## 6 Fit of model and data [i](#)

### 6.1 Protein, DNA and RNA chains [i](#)

In the following table, the column labelled ‘#RSRZ> 2’ contains the number (and percentage) of RSRZ outliers, followed by percent RSRZ outliers for the chain as percentile scores relative to all X-ray entries and entries of similar resolution. The OWAB column contains the minimum, median, 95<sup>th</sup> percentile and maximum values of the occupancy-weighted average B-factor per residue. The column labelled ‘Q< 0.9’ lists the number of (and percentage) of residues with an average occupancy less than 0.9.

Mol	Chain	Analysed	<RSRZ>	#RSRZ>2	OWAB(Å <sup>2</sup> )	Q<0.9
1	A	534/534 (100%)	-0.25	8 (1%) 76 81	17, 25, 45, 75	2 (0%)

All (8) RSRZ outliers are listed below:

Mol	Chain	Res	Type	RSRZ
1	A	2	ASP	6.5
1	A	486	HIS	4.5
1	A	3	HIS	4.4
1	A	535	THR	3.9
1	A	485	PRO	3.8
1	A	488	GLN	3.6
1	A	265	CYS	2.3
1	A	257	ASN	2.2

### 6.2 Non-standard residues in protein, DNA, RNA chains [i](#)

In the following table, the Atoms column lists the number of modelled atoms in the group and the number defined in the chemical component dictionary. LLDF column lists the quality of electron density of the group with respect to its neighbouring residues in protein, DNA or RNA chains. The B-factors column lists the minimum, median, 95<sup>th</sup> percentile and maximum values of B factors of atoms in the group. The column labelled ‘Q< 0.9’ lists the number of atoms with occupancy less than 0.9.

Mol	Type	Chain	Res	Atoms	RSCC	RSR	LLDF	B-factors(Å <sup>2</sup> )	Q<0.9
2	NAG	A	604	14/15	0.88	0.26	-	57,60,67,76	0

### 6.3 Carbohydrates [i](#)

There are no carbohydrates in this entry.

## 6.4 Ligands [i](#)

In the following table, the Atoms column lists the number of modelled atoms in the group and the number defined in the chemical component dictionary. LLDF column lists the quality of electron density of the group with respect to its neighbouring residues in protein, DNA or RNA chains. The B-factors column lists the minimum, median, 95<sup>th</sup> percentile and maximum values of B factors of atoms in the group. The column labelled 'Q< 0.9' lists the number of atoms with occupancy less than 0.9.

Mol	Type	Chain	Res	Atoms	RSCC	RSR	LLDF	B-factors( $\text{\AA}^2$ )	Q<0.9
4	AA7	A	606	37/37	0.86	0.20	2.10	20,20,20,20	0
3	03S	A	605	4/5	0.99	0.12	-1.15	25,30,31,36	0
2	NAG	A	601	14/15	0.70	0.28	-	58,68,74,87	0
2	NAG	A	602	14/15	0.93	0.12	-	31,35,41,44	0
2	NAG	A	604	14/15	0.88	0.26	-	57,60,67,76	0
2	NAG	A	603	14/15	0.86	0.41	-	54,57,68,76	0

## 6.5 Other polymers [i](#)

There are no such residues in this entry.