



Full wwPDB X-ray Structure Validation Report ⓘ

Feb 1, 2016 – 01:57 AM GMT

PDB ID : 2EXK
Title : Structure of the family43 beta-Xylosidase E187G from geobacillus stearothermophilus in complex with xylobiose
Authors : Brux, C.; Niefind, K.; Shallom-Shezifi, D.; Shoham, Y.; Schomburg, D.
Deposited on : 2005-11-08
Resolution : 2.20 Å(reported)

This is a Full wwPDB X-ray Structure Validation Report for a publicly released PDB entry.
We welcome your comments at validation@mail.wwpdb.org
A user guide is available at
<http://wwpdb.org/validation/2016/XrayValidationReportHelp>
with specific help available everywhere you see the ⓘ symbol.

The following versions of software and data (see [references ⓘ](#)) were used in the production of this report:

MolProbity : 4.02b-467
Mogul : 1.7 (RC4), CSD as536be (2015)
Xtriage (Phenix) : 1.9-1692
EDS : rb-20026688
Percentile statistics : 20151230.v01 (using entries in the PDB archive December 30th 2015)
Refmac : 5.8.0135
CCP4 : 6.5.0
Ideal geometry (proteins) : Engh & Huber (2001)
Ideal geometry (DNA, RNA) : Parkinson et al. (1996)
Validation Pipeline (wwPDB-VP) : trunk26865

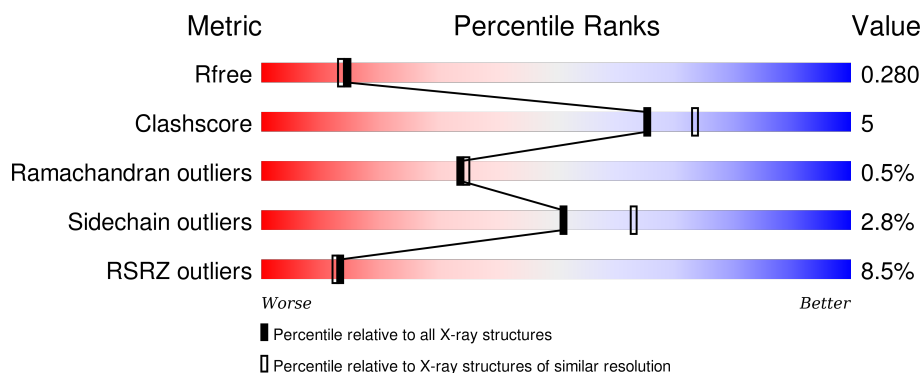
1 Overall quality at a glance

The following experimental techniques were used to determine the structure:

X-RAY DIFFRACTION

The reported resolution of this entry is 2.20 Å.

Percentile scores (ranging between 0-100) for global validation metrics of the entry are shown in the following graphic. The table shows the number of entries on which the scores are based.



Metric	Whole archive (#Entries)	Similar resolution (#Entries, resolution range(Å))
R_{free}	91344	3774 (2.20-2.20)
Clashscore	102246	4477 (2.20-2.20)
Ramachandran outliers	100387	4404 (2.20-2.20)
Sidechain outliers	100360	4405 (2.20-2.20)
RSRZ outliers	91569	3781 (2.20-2.20)

The table below summarises the geometric issues observed across the polymeric chains and their fit to the electron density. The red, orange, yellow and green segments on the lower bar indicate the fraction of residues that contain outliers for ≥ 3 , 2, 1 and 0 types of geometric quality criteria. A grey segment represents the fraction of residues that are not modelled. The numeric value for each fraction is indicated below the corresponding segment, with a dot representing fractions $\leq 5\%$. The upper red bar (where present) indicates the fraction of residues that have poor fit to the electron density. The numeric value is given above the bar.

Mol	Chain	Length	Quality of chain
1	A	535	<div> <div>3%</div> <div>85%</div> <div>14%</div> </div>
1	B	535	<div> <div>3%</div> <div>88%</div> <div>10%</div> </div>
1	C	535	<div> <div>24%</div> <div>84%</div> <div>15%</div> </div>
1	D	535	<div> <div>3%</div> <div>86%</div> <div>13%</div> </div>

The following table lists non-polymeric compounds, carbohydrate monomers and non-standard

residues in protein, DNA, RNA chains that are outliers for geometric or electron-density-fit criteria:

Mol	Type	Chain	Res	Chirality	Geometry	Clashes	Electron density
2	XYS	A	2005	X	-	-	X
2	XYS	A	2006	X	-	-	X
2	XYS	B	2007	X	-	-	X
2	XYS	B	2008	X	-	-	X
2	XYS	C	2009	X	-	-	X
2	XYS	C	2010	X	-	-	X
2	XYS	D	2011	X	-	-	X
2	XYS	D	2012	X	-	-	X
4	MES	B	2014	-	-	-	X
4	MES	D	2015	-	-	-	X

2 Entry composition

There are 6 unique types of molecules in this entry. The entry contains 18715 atoms, of which 0 are hydrogens and 0 are deuteriums.

In the tables below, the ZeroOcc column contains the number of atoms modelled with zero occupancy, the AltConf column contains the number of residues with at least one atom in alternate conformation and the Trace column contains the number of residues modelled with at most 2 atoms.

- Molecule 1 is a protein called beta-D-xylosidase.

Mol	Chain	Residues	Atoms					ZeroOcc	AltConf	Trace
1	A	533	Total	C	N	O	S	0	0	0
			4371	2811	748	802	10			
1	B	533	Total	C	N	O	S	0	0	0
			4371	2811	748	802	10			
1	C	533	Total	C	N	O	S	0	0	0
			4371	2811	748	802	10			
1	D	533	Total	C	N	O	S	0	0	0
			4371	2811	748	802	10			

There are 8 discrepancies between the modelled and reference sequences:

Chain	Residue	Modelled	Actual	Comment	Reference
A	2	ALA	SER	ENGINEERED	UNP Q68HB3
A	187	GLY	GLU	ENGINEERED	UNP Q68HB3
B	2	ALA	SER	ENGINEERED	UNP Q68HB3
B	187	GLY	GLU	ENGINEERED	UNP Q68HB3
C	2	ALA	SER	ENGINEERED	UNP Q68HB3
C	187	GLY	GLU	ENGINEERED	UNP Q68HB3
D	2	ALA	SER	ENGINEERED	UNP Q68HB3
D	187	GLY	GLU	ENGINEERED	UNP Q68HB3

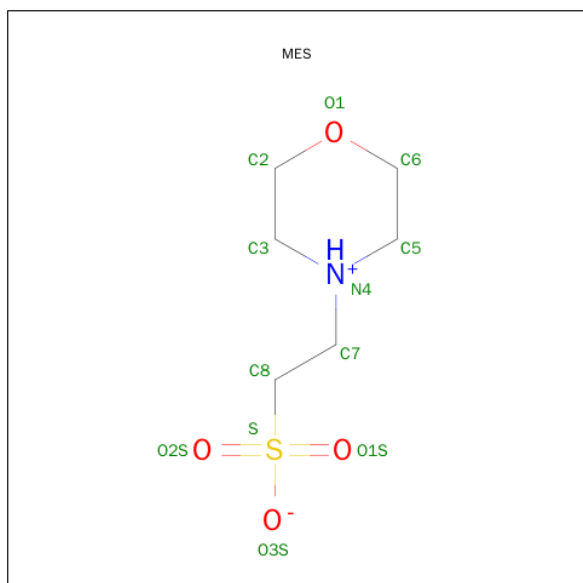
- Molecule 2 is a polymer of unknown type called SUGAR (2-MER).

Mol	Chain	Residues	Atoms			ZeroOcc	AltConf
2	A	2	Total	C	O	0	0
			19	10	9		
2	B	2	Total	C	O	0	0
			19	10	9		
2	C	2	Total	C	O	0	0
			19	10	9		
2	D	2	Total	C	O	0	0
			19	10	9		

- Molecule 3 is CALCIUM ION (three-letter code: CA) (formula: Ca).

Mol	Chain	Residues	Atoms		ZeroOcc	AltConf
3	B	1	Total	Ca	0	0
			1	1		
3	A	1	Total	Ca	0	0
			1	1		
3	D	1	Total	Ca	0	0
			1	1		
3	C	1	Total	Ca	0	0
			1	1		

- Molecule 4 is 2-(N-MORPHOLINO)-ETHANESULFONIC ACID (three-letter code: MES) (formula: C₆H₁₃NO₄S).



Mol	Chain	Residues	Atoms					ZeroOcc	AltConf
4	A	1	Total	C	N	O	S	0	0
			12	6	1	4	1		
4	B	1	Total	C	N	O	S	0	0
			12	6	1	4	1		
4	D	1	Total	C	N	O	S	0	0
			12	6	1	4	1		

- Molecule 5 is GLYCEROL (three-letter code: GOL) (formula: C₃H₈O₃).



Mol	Chain	Residues	Atoms			ZeroOcc	AltConf
5	A	1	Total	C	O	0	0
			6	3	3		
5	B	1	Total	C	O	0	0
			6	3	3		
5	C	1	Total	C	O	0	0
			6	3	3		
5	D	1	Total	C	O	0	0
			6	3	3		

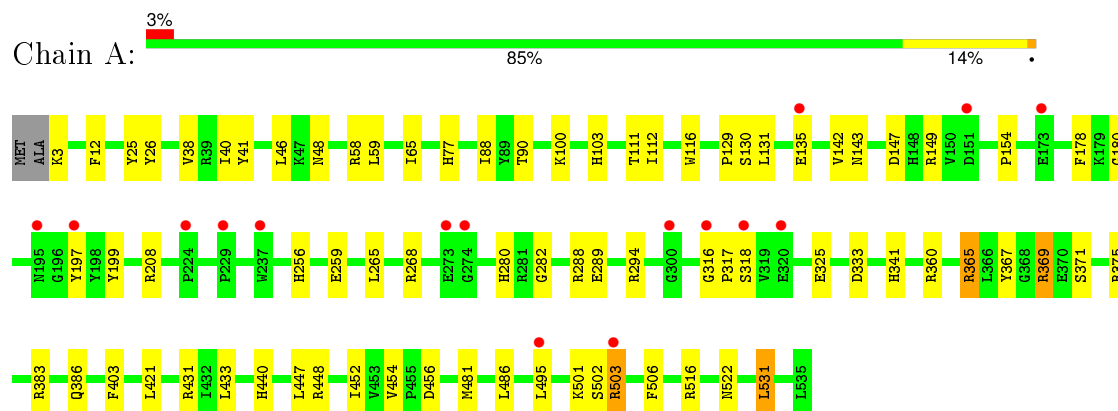
- Molecule 6 is water.

Mol	Chain	Residues	Atoms		ZeroOcc	AltConf
6	A	325	Total	O	0	0
			325	325		
6	B	361	Total	O	0	0
			361	361		
6	C	140	Total	O	0	0
			140	140		
6	D	265	Total	O	0	0
			265	265		

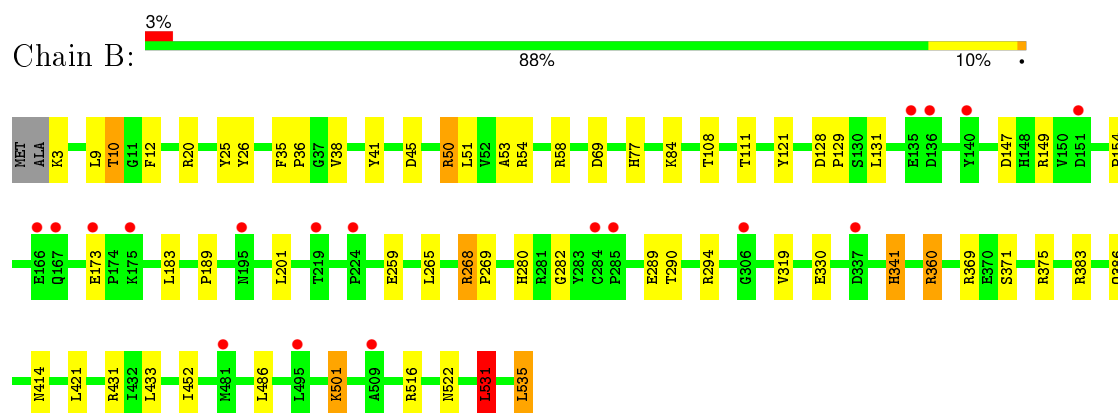
3 Residue-property plots

These plots are drawn for all protein, RNA and DNA chains in the entry. The first graphic for a chain summarises the proportions of errors displayed in the second graphic. The second graphic shows the sequence view annotated by issues in geometry and electron density. Residues are color-coded according to the number of geometric quality criteria for which they contain at least one outlier: green = 0, yellow = 1, orange = 2 and red = 3 or more. A red dot above a residue indicates a poor fit to the electron density ($RSRZ > 2$). Stretches of 2 or more consecutive residues without any outlier are shown as a green connector. Residues present in the sample, but not in the model, are shown in grey.

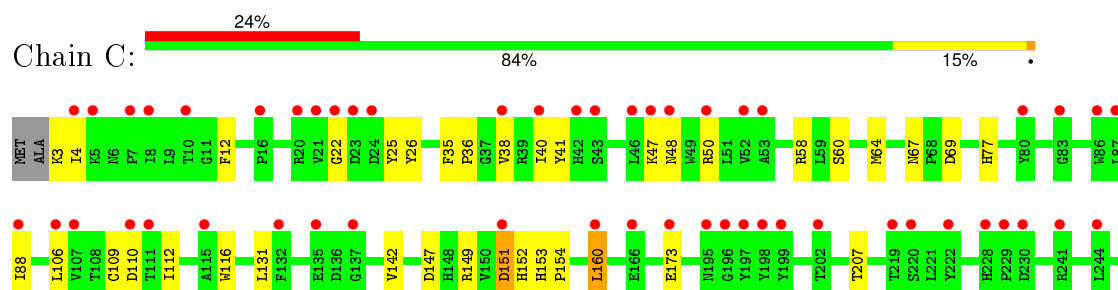
• Molecule 1: beta-D-xylosidase

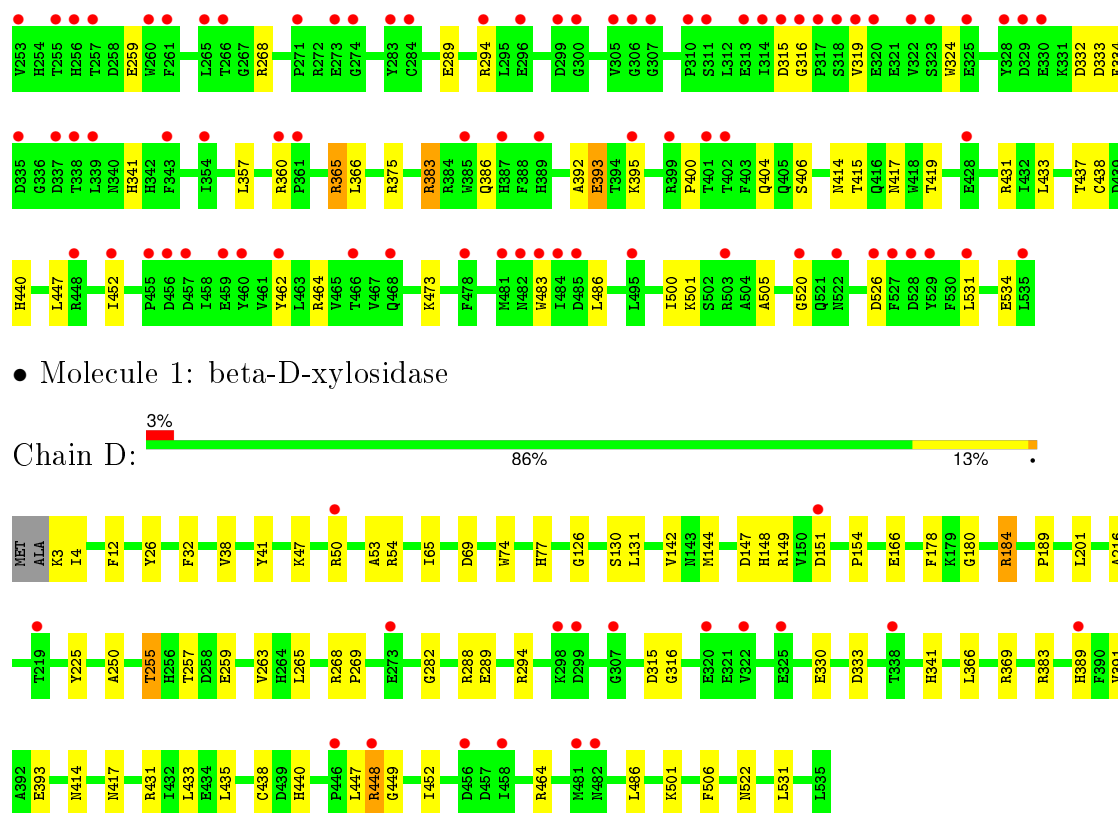


• Molecule 1: beta-D-xylosidase

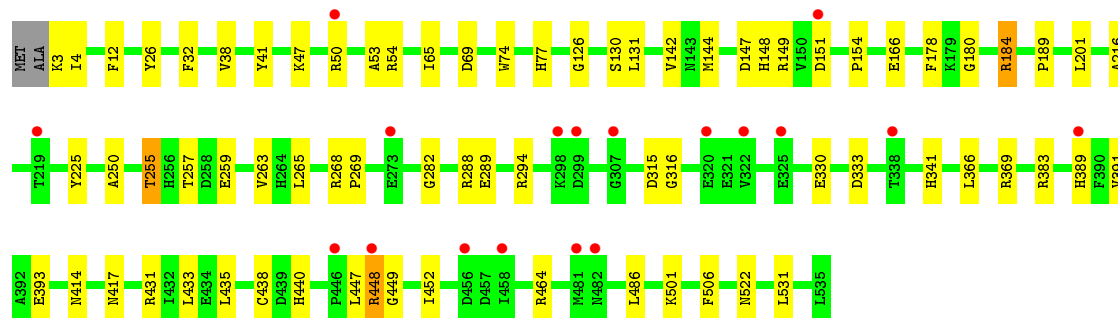
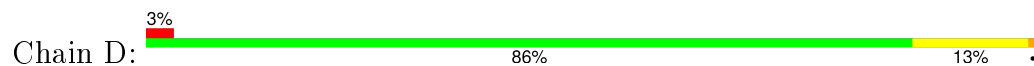


• Molecule 1: beta-D-xylosidase





• Molecule 1: beta-D-xylosidase



4 Data and refinement statistics

Property	Value	Source
Space group	P 43 21 2	Depositor
Cell constants a, b, c, α , β , γ	139.87Å 139.87Å 232.03Å 90.00° 90.00° 90.00°	Depositor
Resolution (Å)	2.23 – 2.20 19.99 – 2.20	Depositor EDS
% Data completeness (in resolution range)	99.4 (2.23-2.20) 99.5 (19.99-2.20)	Depositor EDS
R_{merge}	(Not available)	Depositor
R_{sym}	(Not available)	Depositor
$\langle I/\sigma(I) \rangle$ ¹	6.43 (at 2.21Å)	Xtriage
Refinement program	REFMAC 5.2.0005	Depositor
R, R_{free}	0.185 , 0.238 0.239 , 0.280	Depositor DCC
R_{free} test set	5800 reflections (5.01%)	DCC
Wilson B-factor (Å ²)	33.0	Xtriage
Anisotropy	0.312	Xtriage
Bulk solvent k_{sol} (e/Å ³), B_{sol} (Å ²)	0.34 , 39.4	EDS
Estimated twinning fraction	No twinning to report.	Xtriage
L-test for twinning ²	$\langle L \rangle = 0.47$, $\langle L^2 \rangle = 0.30$	Xtriage
Outliers	0 of 115793 reflections	Xtriage
F_o, F_c correlation	0.92	EDS
Total number of atoms	18715	wwPDB-VP
Average B, all atoms (Å ²)	43.0	wwPDB-VP

Xtriage's analysis on translational NCS is as follows: *The largest off-origin peak in the Patterson function is 2.64% of the height of the origin peak. No significant pseudotranslation is detected.*

¹Intensities estimated from amplitudes.

²Theoretical values of $\langle |L| \rangle$, $\langle L^2 \rangle$ for acentric reflections are 0.5, 0.375 respectively for untwinned datasets, and 0.333, 0.2 for perfectly twinned datasets.

5 Model quality ⓘ

5.1 Standard geometry ⓘ

Bond lengths and bond angles in the following residue types are not validated in this section: GOL, CA, XYS, MES

The Z score for a bond length (or angle) is the number of standard deviations the observed value is removed from the expected value. A bond length (or angle) with $|Z| > 5$ is considered an outlier worth inspection. RMSZ is the root-mean-square of all Z scores of the bond lengths (or angles).

Mol	Chain	Bond lengths		Bond angles	
		RMSZ	$\# Z > 5$	RMSZ	$\# Z > 5$
1	A	0.45	0/4515	0.62	2/6153 (0.0%)
1	B	0.45	0/4515	0.62	2/6153 (0.0%)
1	C	0.72	13/4515 (0.3%)	0.62	3/6153 (0.0%)
1	D	0.44	0/4515	0.60	0/6153
All	All	0.53	13/18060 (0.1%)	0.61	7/24612 (0.0%)

Chiral center outliers are detected by calculating the chiral volume of a chiral center and verifying if the center is modelled as a planar moiety or with the opposite hand. A planarity outlier is detected by checking planarity of atoms in a peptide group, atoms in a mainchain group or atoms of a sidechain that are expected to be planar.

Mol	Chain	#Chirality outliers	#Planarity outliers
2	A	4	0
2	B	4	0
2	C	4	0
2	D	4	0
All	All	16	0

All (13) bond length outliers are listed below:

Mol	Chain	Res	Type	Atoms	Z	Observed(Å)	Ideal(Å)
1	C	259	GLU	CD-OE2	12.34	1.39	1.25
1	C	50	ARG	CZ-NH1	9.67	1.45	1.33
1	C	393	GLU	CD-OE1	9.63	1.36	1.25
1	C	259	GLU	CD-OE1	9.59	1.36	1.25
1	C	383	ARG	CZ-NH1	9.37	1.45	1.33
1	C	319	VAL	C-O	8.28	1.39	1.23
1	C	393	GLU	CG-CD	7.52	1.63	1.51
1	C	393	GLU	CD-OE2	7.19	1.33	1.25
1	C	315	ASP	CG-OD2	6.92	1.41	1.25
1	C	294	ARG	NE-CZ	6.51	1.41	1.33

Continued on next page...

Continued from previous page...

Mol	Chain	Res	Type	Atoms	Z	Observed(Å)	Ideal(Å)
1	C	386	GLN	CD-OE1	5.73	1.36	1.24
1	C	534	GLU	CD-OE1	5.71	1.31	1.25
1	C	25	TYR	CG-CD2	5.20	1.46	1.39

All (7) bond angle outliers are listed below:

Mol	Chain	Res	Type	Atoms	Z	Observed(°)	Ideal(°)
1	C	383	ARG	NE-CZ-NH2	-10.29	115.15	120.30
1	C	50	ARG	NE-CZ-NH2	-7.57	116.51	120.30
1	B	531	LEU	CA-CB-CG	7.38	132.27	115.30
1	A	531	LEU	CA-CB-CG	6.69	130.69	115.30
1	C	383	ARG	NE-CZ-NH1	6.05	123.33	120.30
1	A	369	ARG	NE-CZ-NH2	-5.75	117.43	120.30
1	B	268	ARG	NE-CZ-NH2	-5.41	117.59	120.30

All (16) chirality outliers are listed below:

Mol	Chain	Res	Type	Atom
2	A	2005	XYS	C2,C3,C4
2	A	2006	XYS	C1
2	B	2007	XYS	C2,C3,C4
2	B	2008	XYS	C1
2	C	2009	XYS	C2,C3,C4
2	C	2010	XYS	C1
2	D	2011	XYS	C2,C3,C4
2	D	2012	XYS	C1

There are no planarity outliers.

5.2 Too-close contacts ⓘ

In the following table, the Non-H and H(model) columns list the number of non-hydrogen atoms and hydrogen atoms in the chain respectively. The H(added) column lists the number of hydrogen atoms added and optimized by MolProbity. The Clashes column lists the number of clashes within the asymmetric unit, whereas Symm-Clashes lists symmetry related clashes.

Mol	Chain	Non-H	H(model)	H(added)	Clashes	Symm-Clashes
1	A	4371	0	4160	48	0
1	B	4371	0	4160	47	0
1	C	4371	0	4160	38	0
1	D	4371	0	4160	41	0

Continued on next page...

Continued from previous page...

Mol	Chain	Non-H	H(model)	H(added)	Clashes	Symm-Clashes
2	A	19	0	16	1	0
2	B	19	0	16	0	0
2	C	19	0	16	2	0
2	D	19	0	16	0	0
3	A	1	0	0	0	0
3	B	1	0	0	0	0
3	C	1	0	0	0	0
3	D	1	0	0	0	0
4	A	12	0	12	0	0
4	B	12	0	12	4	0
4	D	12	0	12	2	0
5	A	6	0	8	0	0
5	B	6	0	8	0	0
5	C	6	0	8	0	0
5	D	6	0	8	0	0
6	A	325	0	0	11	0
6	B	361	0	0	14	0
6	C	140	0	0	0	0
6	D	265	0	0	5	0
All	All	18715	0	16772	173	0

The all-atom clashscore is defined as the number of clashes found per 1000 atoms (including hydrogen atoms). The all-atom clashscore for this structure is 5.

All (173) close contacts within the same asymmetric unit are listed below, sorted by their clash magnitude.

Atom-1	Atom-2	Interatomic distance (Å)	Clash overlap (Å)
1:A:369:ARG:HH22	1:A:522:ASN:ND2	1.34	1.24
1:A:369:ARG:HH22	1:A:522:ASN:HD22	1.08	1.02
1:B:54:ARG:HE	4:B:2014:MES:H82	1.27	0.98
1:A:369:ARG:NH2	1:A:522:ASN:HD22	1.63	0.97
1:A:369:ARG:NH2	1:A:522:ASN:ND2	2.14	0.95
1:D:255:THR:HG22	1:D:259:GLU:H	1.37	0.88
1:A:503:ARG:HG3	6:A:2241:HOH:O	1.81	0.79
1:A:360:ARG:HB2	1:A:365:ARG:HH12	1.50	0.76
1:A:369:ARG:HH22	1:A:522:ASN:HD21	1.32	0.75
1:A:25:TYR:OH	1:A:256:HIS:HD2	1.70	0.75
1:D:268:ARG:HD3	1:D:289:GLU:OE1	1.86	0.74
1:C:400:PRO:HD2	1:C:431:ARG:HD2	1.70	0.73
1:C:268:ARG:HD3	1:C:289:GLU:OE1	1.87	0.73
1:C:77:HIS:CD2	1:C:131:LEU:H	2.07	0.72

Continued on next page...

Continued from previous page...

Atom-1	Atom-2	Interatomic distance (Å)	Clash overlap (Å)
1:B:3:LYS:HG3	6:B:2093:HOH:O	1.89	0.71
1:B:53:ALA:HA	4:B:2014:MES:H51	1.71	0.71
1:B:10:THR:CG2	1:B:386:GLN:O	2.40	0.69
1:D:53:ALA:HA	4:D:2015:MES:H81	1.76	0.68
1:B:147:ASP:OD1	1:B:149:ARG:HD3	1.93	0.68
1:A:111:THR:HG21	6:A:2193:HOH:O	1.93	0.68
1:B:10:THR:HG23	1:B:386:GLN:O	1.94	0.68
1:C:58:ARG:NH2	1:C:116:TRP:O	2.26	0.68
1:D:147:ASP:OD1	1:D:149:ARG:HD3	1.94	0.67
1:B:111:THR:HG22	6:B:2101:HOH:O	1.94	0.67
1:D:294:ARG:NH1	1:D:315:ASP:O	2.29	0.66
1:C:3:LYS:HD3	1:C:316:GLY:H	1.62	0.65
1:B:121:TYR:OH	1:C:520:GLY:HA3	1.98	0.64
1:C:40:ILE:HG21	1:C:112:ILE:HD11	1.81	0.63
1:C:433:LEU:HB2	1:C:452:ILE:HB	1.83	0.61
1:B:77:HIS:CD2	1:B:131:LEU:H	2.19	0.61
1:D:433:LEU:HB2	1:D:452:ILE:HB	1.82	0.60
1:A:365:ARG:HD3	1:A:367:TYR:CZ	2.37	0.59
1:A:502:SER:O	1:A:503:ARG:HB2	2.03	0.58
1:C:147:ASP:OD1	1:C:149:ARG:HD3	2.03	0.58
1:B:54:ARG:NE	4:B:2014:MES:H82	2.08	0.57
1:B:58:ARG:NH1	6:B:2032:HOH:O	2.19	0.57
1:D:77:HIS:CD2	1:D:131:LEU:H	2.21	0.57
1:C:365:ARG:HD3	1:C:526:ASP:OD1	2.04	0.57
1:C:417:ASN:HA	1:C:438:CYS:O	2.04	0.57
1:B:10:THR:HG22	1:B:386:GLN:HB3	1.87	0.57
1:D:147:ASP:OD1	1:D:149:ARG:CD	2.53	0.57
1:D:435:LEU:HD12	1:D:447:LEU:HD13	1.85	0.56
1:D:255:THR:HG23	1:D:257:THR:H	1.69	0.56
1:A:433:LEU:HB2	1:A:452:ILE:HB	1.88	0.56
1:D:255:THR:HG22	1:D:259:GLU:N	2.16	0.56
1:A:280:HIS:CD2	1:A:282:GLY:H	2.24	0.56
1:D:54:ARG:H	4:D:2015:MES:H32	1.71	0.55
1:C:375:ARG:HG3	1:C:415:THR:HG21	1.88	0.55
1:B:84:LYS:HD3	1:B:108:THR:HB	1.87	0.55
1:D:330:GLU:O	1:D:531:LEU:HA	2.07	0.55
1:A:147:ASP:O	1:A:154:PRO:HA	2.07	0.55
1:C:392:ALA:HA	1:C:531:LEU:O	2.08	0.54
1:D:178:PHE:CE2	1:D:180:GLY:HA2	2.43	0.54
1:A:147:ASP:OD1	1:A:149:ARG:HD3	2.08	0.54
1:B:50:ARG:HH11	1:B:50:ARG:HB3	1.73	0.54

Continued on next page...

Continued from previous page...

Atom-1	Atom-2	Interatomic distance (Å)	Clash overlap (Å)
1:A:383:ARG:HD2	6:A:2164:HOH:O	2.06	0.54
1:D:147:ASP:O	1:D:154:PRO:HA	2.08	0.53
1:A:58:ARG:NH2	1:A:116:TRP:O	2.31	0.53
1:C:334:PHE:HB3	1:C:357:LEU:HD22	1.89	0.53
1:C:393:GLU:HG3	1:C:464:ARG:HB2	1.90	0.53
1:A:208:ARG:CZ	6:A:2241:HOH:O	2.55	0.53
1:B:280:HIS:HE1	6:B:2194:HOH:O	1.91	0.53
1:B:268:ARG:HD3	1:B:289:GLU:OE2	2.08	0.53
1:D:3:LYS:HD3	1:D:316:GLY:H	1.73	0.53
1:A:178:PHE:CE2	1:A:180:GLY:HA2	2.44	0.52
1:B:269:PRO:HB3	1:B:282:GLY:HA3	1.92	0.52
1:B:58:ARG:NH2	6:B:2032:HOH:O	2.36	0.52
1:A:448:ARG:NH2	6:A:2269:HOH:O	2.42	0.52
1:B:433:LEU:HB3	1:B:452:ILE:HB	1.91	0.52
1:B:369:ARG:NH2	1:B:522:ASN:OD1	2.43	0.51
1:D:151:ASP:HB3	6:D:2159:HOH:O	2.09	0.51
1:B:375:ARG:NH2	6:B:2171:HOH:O	2.43	0.51
1:A:421:LEU:HD13	1:A:486:LEU:HD13	1.92	0.51
1:B:9:LEU:HB2	1:B:290:THR:HB	1.91	0.51
1:A:365:ARG:HH11	1:A:365:ARG:HB2	1.75	0.51
1:A:431:ARG:HD2	6:A:2092:HOH:O	2.10	0.51
1:C:4:ILE:HG12	1:C:47:LYS:HB2	1.93	0.50
1:A:431:ARG:HD3	1:A:454:VAL:HB	1.93	0.50
1:C:395:LYS:HD2	1:C:462:TYR:CE1	2.47	0.50
1:D:184:ARG:HD3	6:D:2161:HOH:O	2.10	0.49
1:C:142:VAL:HG13	1:C:160:LEU:HD12	1.93	0.49
1:C:334:PHE:HB3	1:C:357:LEU:CD2	2.43	0.49
1:C:147:ASP:O	1:C:154:PRO:HA	2.11	0.49
1:B:421:LEU:HD13	1:B:486:LEU:HD13	1.93	0.49
6:B:2063:HOH:O	1:C:404:GLN:HG2	2.13	0.48
1:A:375:ARG:NH2	6:A:2142:HOH:O	2.46	0.48
1:D:4:ILE:HG12	1:D:47:LYS:HB2	1.96	0.48
2:A:2005:XYS:O4	6:A:2136:HOH:O	2.19	0.48
1:D:216:ALA:HB1	1:D:225:TYR:HB3	1.96	0.48
1:C:207:THR:N	2:C:2010:XYS:O3	2.47	0.47
1:A:3:LYS:HB3	1:A:316:GLY:H	1.80	0.47
1:D:259:GLU:OE1	1:D:294:ARG:NH2	2.47	0.47
1:A:383:ARG:NH2	1:A:386:GLN:OE1	2.47	0.47
1:A:501:LYS:HE2	6:A:2076:HOH:O	2.14	0.47
1:D:189:PRO:HA	1:D:201:LEU:O	2.14	0.47
1:B:20:ARG:HG3	1:B:25:TYR:CE1	2.49	0.47

Continued on next page...

Continued from previous page...

Atom-1	Atom-2	Interatomic distance (Å)	Clash overlap (Å)
1:A:46:LEU:HD12	1:A:317:PRO:HG3	1.97	0.47
1:A:440:HIS:NE2	1:A:501:LYS:HG2	2.30	0.47
1:B:421:LEU:HD13	1:B:486:LEU:CD1	2.45	0.46
1:A:40:ILE:HG21	1:A:112:ILE:HD11	1.97	0.46
1:D:126:GLY:HA3	1:D:144:MET:O	2.16	0.46
1:A:288:ARG:NH2	1:A:506:PHE:HB3	2.30	0.46
1:B:268:ARG:CD	1:B:289:GLU:OE2	2.63	0.46
1:A:403:PHE:O	1:D:148:HIS:HE1	1.99	0.46
1:A:130:SER:HB3	1:A:142:VAL:HG23	1.97	0.46
1:A:90:THR:HA	1:A:103:HIS:O	2.15	0.46
1:B:54:ARG:H	4:B:2014:MES:H51	1.80	0.46
1:C:26:TYR:HA	1:C:41:TYR:O	2.15	0.46
1:C:151:ASP:OD2	1:C:152:HIS:CE1	2.69	0.46
1:B:51:LEU:HD23	1:B:341:HIS:CG	2.51	0.46
1:B:189:PRO:HA	1:B:201:LEU:O	2.16	0.46
1:D:250:ALA:HA	1:D:263:VAL:O	2.15	0.46
1:C:69:ASP:CG	1:C:414:ASN:HB2	2.37	0.46
1:B:371:SER:HA	1:B:516:ARG:HD3	1.98	0.45
1:B:501:LYS:HD2	6:B:2075:HOH:O	2.15	0.45
1:D:69:ASP:CG	1:D:414:ASN:HB2	2.36	0.45
1:A:197:TYR:HB2	1:A:199:TYR:CE1	2.52	0.45
1:A:265:LEU:HA	1:A:289:GLU:O	2.16	0.45
1:B:360:ARG:HD3	6:B:2257:HOH:O	2.16	0.45
1:D:288:ARG:NH2	1:D:506:PHE:HB3	2.32	0.45
1:A:129:PRO:HA	1:A:143:ASN:HB3	1.98	0.44
1:A:88:ILE:HG21	1:A:129:PRO:HB2	1.98	0.44
1:B:26:TYR:HA	1:B:41:TYR:O	2.18	0.44
1:A:280:HIS:HD2	1:A:282:GLY:H	1.63	0.44
1:A:447:LEU:HD11	1:A:486:LEU:HD22	2.00	0.44
1:D:391:VAL:CG2	1:D:464:ARG:HD2	2.48	0.44
1:B:259:GLU:OE1	1:B:294:ARG:NH2	2.47	0.44
1:B:535:LEU:HD11	6:B:2097:HOH:O	2.17	0.44
1:B:3:LYS:CE	6:B:2118:HOH:O	2.65	0.43
1:A:259:GLU:OE1	1:A:294:ARG:NH2	2.43	0.43
1:D:448:ARG:HA	1:D:449:GLY:HA2	1.83	0.43
1:B:501:LYS:NZ	6:B:2192:HOH:O	2.51	0.43
1:C:48:ASN:HB3	1:C:324:TRP:CD1	2.53	0.43
1:B:3:LYS:HE3	6:B:2118:HOH:O	2.18	0.43
1:B:265:LEU:HA	1:B:289:GLU:O	2.18	0.43
1:D:393:GLU:OE1	1:D:464:ARG:HD3	2.18	0.43
1:A:48:ASN:HB3	6:A:2236:HOH:O	2.18	0.43

Continued on next page...

Continued from previous page...

Atom-1	Atom-2	Interatomic distance (Å)	Clash overlap (Å)
1:C:88:ILE:HD13	1:C:106:LEU:HD13	2.01	0.43
1:C:440:HIS:NE2	1:C:501:LYS:HD3	2.34	0.43
1:A:77:HIS:CD2	1:A:131:LEU:H	2.37	0.42
1:D:389:HIS:HD2	6:D:2250:HOH:O	2.01	0.42
1:C:500:ILE:HB	1:C:505:ALA:HB2	2.00	0.42
1:B:69:ASP:CG	1:B:414:ASN:HB2	2.38	0.42
1:B:45:ASP:HA	1:B:319:VAL:HG21	2.01	0.42
1:C:3:LYS:HD3	1:C:316:GLY:N	2.31	0.42
1:C:35:PHE:CG	1:C:36:PRO:HA	2.54	0.42
1:C:77:HIS:HD2	1:C:131:LEU:H	1.64	0.42
1:D:440:HIS:NE2	1:D:501:LYS:HG2	2.35	0.42
1:D:417:ASN:HA	1:D:438:CYS:O	2.20	0.42
1:A:365:ARG:HD3	1:A:367:TYR:CE2	2.55	0.42
1:B:330:GLU:O	1:B:531:LEU:HA	2.20	0.42
1:A:26:TYR:HA	1:A:41:TYR:O	2.20	0.42
1:C:64:MET:O	1:C:67:ASN:HB2	2.20	0.42
1:C:419:THR:HG22	1:C:437:THR:HG22	2.02	0.42
1:C:109:CYS:HB2	1:C:116:TRP:CD2	2.55	0.41
1:B:147:ASP:O	1:B:154:PRO:HA	2.20	0.41
1:C:207:THR:HG22	2:C:2010:XYS:H3	2.02	0.41
1:D:50:ARG:HA	6:D:2129:HOH:O	2.20	0.41
1:A:371:SER:HA	1:A:516:ARG:HD3	2.03	0.41
1:C:153:HIS:HA	1:C:154:PRO:HD3	1.95	0.41
1:D:265:LEU:HD12	1:D:265:LEU:C	2.40	0.41
1:D:77:HIS:CD2	6:D:2055:HOH:O	2.74	0.41
1:B:128:ASP:N	1:B:129:PRO:CD	2.84	0.41
1:D:130:SER:HB3	1:D:142:VAL:HG23	2.02	0.41
1:B:35:PHE:CG	1:B:36:PRO:HA	2.55	0.41
1:B:280:HIS:CD2	1:B:282:GLY:H	2.39	0.40
1:C:462:TYR:HB3	1:C:483:TRP:CH2	2.56	0.40
1:D:32:PHE:CE2	1:D:74:TRP:CD1	3.10	0.40
1:D:26:TYR:HA	1:D:41:TYR:O	2.21	0.40
1:A:111:THR:HG22	6:A:2183:HOH:O	2.22	0.40
1:D:369:ARG:NH2	1:D:522:ASN:OD1	2.41	0.40
1:B:50:ARG:HD2	6:B:2083:HOH:O	2.20	0.40
1:D:269:PRO:HB3	1:D:282:GLY:HA3	2.03	0.40

There are no symmetry-related clashes.

5.3 Torsion angles

5.3.1 Protein backbone

In the following table, the Percentiles column shows the percent Ramachandran outliers of the chain as a percentile score with respect to all X-ray entries followed by that with respect to entries of similar resolution.

The Analysed column shows the number of residues for which the backbone conformation was analysed, and the total number of residues.

Mol	Chain	Analysed	Favoured	Allowed	Outliers	Percentiles	
1	A	531/535 (99%)	505 (95%)	23 (4%)	3 (1%)	30	29
1	B	531/535 (99%)	508 (96%)	21 (4%)	2 (0%)	39	42
1	C	531/535 (99%)	503 (95%)	25 (5%)	3 (1%)	30	29
1	D	531/535 (99%)	501 (94%)	28 (5%)	2 (0%)	39	42
All	All	2124/2140 (99%)	2017 (95%)	97 (5%)	10 (0%)	34	35

All (10) Ramachandran outliers are listed below:

Mol	Chain	Res	Type
1	A	12	PHE
1	A	38	VAL
1	B	12	PHE
1	B	38	VAL
1	C	12	PHE
1	C	38	VAL
1	D	38	VAL
1	C	22	GLY
1	D	12	PHE
1	A	318	SER

5.3.2 Protein sidechains

In the following table, the Percentiles column shows the percent sidechain outliers of the chain as a percentile score with respect to all X-ray entries followed by that with respect to entries of similar resolution.

The Analysed column shows the number of residues for which the sidechain conformation was analysed, and the total number of residues.

Mol	Chain	Analysed	Rotameric	Outliers	Percentiles	
1	A	468/469 (100%)	454 (97%)	14 (3%)	48	60

Continued on next page...

Continued from previous page...

Mol	Chain	Analysed	Rotameric	Outliers	Percentiles	
1	B	468/469 (100%)	457 (98%)	11 (2%)	57	69
1	C	468/469 (100%)	452 (97%)	16 (3%)	44	54
1	D	468/469 (100%)	457 (98%)	11 (2%)	57	69
All	All	1872/1876 (100%)	1820 (97%)	52 (3%)	51	63

All (52) residues with a non-rotameric sidechain are listed below:

Mol	Chain	Res	Type
1	A	59	LEU
1	A	65	ILE
1	A	100	LYS
1	A	135	GLU
1	A	268	ARG
1	A	325	GLU
1	A	333	ASP
1	A	341	HIS
1	A	365	ARG
1	A	456	ASP
1	A	481	MET
1	A	495	LEU
1	A	503	ARG
1	A	531	LEU
1	B	10	THR
1	B	50	ARG
1	B	173	GLU
1	B	183	LEU
1	B	341	HIS
1	B	360	ARG
1	B	383	ARG
1	B	431	ARG
1	B	501	LYS
1	B	531	LEU
1	B	535	LEU
1	C	60	SER
1	C	110	ASP
1	C	151	ASP
1	C	160	LEU
1	C	173	GLU
1	C	332	ASP
1	C	333	ASP
1	C	341	HIS

Continued on next page...

Continued from previous page...

Mol	Chain	Res	Type
1	C	360	ARG
1	C	365	ARG
1	C	366	LEU
1	C	383	ARG
1	C	406	SER
1	C	447	LEU
1	C	473	LYS
1	C	486	LEU
1	D	65	ILE
1	D	166	GLU
1	D	184	ARG
1	D	255	THR
1	D	333	ASP
1	D	341	HIS
1	D	366	LEU
1	D	383	ARG
1	D	431	ARG
1	D	448	ARG
1	D	486	LEU

Some sidechains can be flipped to improve hydrogen bonding and reduce clashes. All (20) such sidechains are listed below:

Mol	Chain	Res	Type
1	A	77	HIS
1	A	210	ASN
1	A	254	HIS
1	A	256	HIS
1	A	280	HIS
1	A	422	GLN
1	A	522	ASN
1	B	77	HIS
1	B	254	HIS
1	B	280	HIS
1	C	77	HIS
1	C	152	HIS
1	C	195	ASN
1	C	254	HIS
1	C	280	HIS
1	C	411	ASN
1	C	422	GLN
1	D	77	HIS
1	D	280	HIS

Continued on next page...

Continued from previous page...

Mol	Chain	Res	Type
1	D	422	GLN

5.3.3 RNA ⓘ

There are no RNA molecules in this entry.

5.4 Non-standard residues in protein, DNA, RNA chains ⓘ

There are no non-standard protein/DNA/RNA residues in this entry.

5.5 Carbohydrates ⓘ

8 carbohydrates are modelled in this entry.

In the following table, the Counts columns list the number of bonds (or angles) for which Mogul statistics could be retrieved, the number of bonds (or angles) that are observed in the model and the number of bonds (or angles) that are defined in the chemical component dictionary. The Link column lists molecule types, if any, to which the group is linked. The Z score for a bond length (or angle) is the number of standard deviations the observed value is removed from the expected value. A bond length (or angle) with $|Z| > 2$ is considered an outlier worth inspection. RMSZ is the root-mean-square of all Z scores of the bond lengths (or angles).

Mol	Type	Chain	Res	Link	Bond lengths			Bond angles		
					Counts	RMSZ	# $ Z > 2$	Counts	RMSZ	# $ Z > 2$
2	XYS	A	2005	2	9,9,10	1.08	1 (11%)	12,12,14	1.44	1 (8%)
2	XYS	A	2006	2	10,10,10	2.38	4 (40%)	12,14,14	2.39	4 (33%)
2	XYS	B	2007	2	9,9,10	1.25	1 (11%)	12,12,14	2.16	3 (25%)
2	XYS	B	2008	2	10,10,10	1.94	3 (30%)	12,14,14	1.93	2 (16%)
2	XYS	C	2009	2	9,9,10	1.29	1 (11%)	12,12,14	1.16	2 (16%)
2	XYS	C	2010	2	10,10,10	1.92	3 (30%)	12,14,14	1.67	1 (8%)
2	XYS	D	2011	2	9,9,10	0.99	0	12,12,14	1.34	2 (16%)
2	XYS	D	2012	2	10,10,10	2.16	3 (30%)	12,14,14	1.42	2 (16%)

In the following table, the Chirals column lists the number of chiral outliers, the number of chiral centers analysed, the number of these observed in the model and the number defined in the chemical component dictionary. Similar counts are reported in the Torsion and Rings columns. '-' means no outliers of that kind were identified.

Mol	Type	Chain	Res	Link	Chirals	Torsions	Rings
2	XYS	A	2005	2	3/3/3/4	0/0/14/17	0/1/1/1
2	XYS	A	2006	2	1/1/4/4	0/0/17/17	0/1/1/1
2	XYS	B	2007	2	3/3/3/4	0/0/14/17	0/1/1/1
2	XYS	B	2008	2	1/1/4/4	0/0/17/17	0/1/1/1
2	XYS	C	2009	2	3/3/3/4	0/0/14/17	0/1/1/1
2	XYS	C	2010	2	1/1/4/4	0/0/17/17	0/1/1/1
2	XYS	D	2011	2	3/3/3/4	0/0/14/17	0/1/1/1
2	XYS	D	2012	2	1/1/4/4	0/0/17/17	0/1/1/1

All (16) bond length outliers are listed below:

Mol	Chain	Res	Type	Atoms	Z	Observed(Å)	Ideal(Å)
2	A	2006	XYS	O1-C1	2.02	1.46	1.39
2	A	2005	XYS	C4-C3	2.13	1.55	1.52
2	A	2006	XYS	O5-C5	2.18	1.47	1.43
2	C	2010	XYS	O5-C5	2.25	1.47	1.43
2	B	2007	XYS	C4-C3	2.32	1.55	1.52
2	C	2009	XYS	O5-C5	2.33	1.47	1.42
2	B	2008	XYS	O4-C4	2.39	1.48	1.43
2	D	2012	XYS	C4-C3	2.51	1.56	1.52
2	C	2010	XYS	O4-C4	2.57	1.49	1.43
2	D	2012	XYS	O4-C4	2.73	1.49	1.43
2	B	2008	XYS	O5-C5	2.75	1.48	1.43
2	A	2006	XYS	O4-C4	3.08	1.50	1.43
2	C	2010	XYS	O5-C1	3.55	1.48	1.43
2	B	2008	XYS	O5-C1	3.97	1.48	1.43
2	D	2012	XYS	O5-C1	4.56	1.49	1.43
2	A	2006	XYS	O5-C1	5.45	1.51	1.43

All (17) bond angle outliers are listed below:

Mol	Chain	Res	Type	Atoms	Z	Observed(°)	Ideal(°)
2	A	2006	XYS	C5-C4-C3	-3.69	105.18	109.54
2	A	2006	XYS	O5-C5-C4	-3.47	105.23	110.86
2	D	2011	XYS	O2-C2-C1	-2.06	105.08	109.21
2	C	2009	XYS	C5-O5-C1	2.24	115.18	111.57
2	C	2009	XYS	O5-C1-C2	2.28	114.56	110.31
2	D	2012	XYS	O4-C4-C3	2.44	115.04	110.12
2	B	2007	XYS	C1-C2-C3	2.48	112.47	109.54
2	D	2011	XYS	C5-C4-C3	3.04	113.14	109.54
2	A	2006	XYS	O4-C4-C5	3.09	115.40	109.21
2	D	2012	XYS	O4-C4-C5	3.42	116.07	109.21

Continued on next page...

Continued from previous page...

Mol	Chain	Res	Type	Atoms	Z	Observed(°)	Ideal(°)
2	B	2008	XYS	O5-C5-C4	3.52	116.57	110.86
2	A	2005	XYS	C5-C4-C3	4.20	114.51	109.54
2	B	2007	XYS	C4-C3-C2	4.55	115.73	111.24
2	B	2008	XYS	O4-C4-C3	4.75	119.67	110.12
2	C	2010	XYS	O4-C4-C5	4.84	118.91	109.21
2	A	2006	XYS	O4-C4-C3	4.94	120.05	110.12
2	B	2007	XYS	C5-C4-C3	5.09	115.56	109.54

All (16) chirality outliers are listed below:

Mol	Chain	Res	Type	Atom
2	D	2012	XYS	C1
2	D	2011	XYS	C2
2	D	2011	XYS	C3
2	D	2011	XYS	C4
2	C	2010	XYS	C1
2	A	2006	XYS	C1
2	A	2005	XYS	C2
2	A	2005	XYS	C3
2	A	2005	XYS	C4
2	B	2008	XYS	C1
2	B	2007	XYS	C2
2	B	2007	XYS	C3
2	B	2007	XYS	C4
2	C	2009	XYS	C2
2	C	2009	XYS	C3
2	C	2009	XYS	C4

There are no torsion outliers.

There are no ring outliers.

2 monomers are involved in 3 short contacts:

Mol	Chain	Res	Type	Clashes	Symm-Clashes
2	A	2005	XYS	1	0
2	C	2010	XYS	2	0

5.6 Ligand geometry [i](#)

Of 11 ligands modelled in this entry, 4 are monoatomic - leaving 7 for Mogul analysis.

In the following table, the Counts columns list the number of bonds (or angles) for which Mogul

statistics could be retrieved, the number of bonds (or angles) that are observed in the model and the number of bonds (or angles) that are defined in the chemical component dictionary. The Link column lists molecule types, if any, to which the group is linked. The Z score for a bond length (or angle) is the number of standard deviations the observed value is removed from the expected value. A bond length (or angle) with $|Z| > 2$ is considered an outlier worth inspection. RMSZ is the root-mean-square of all Z scores of the bond lengths (or angles).

Mol	Type	Chain	Res	Link	Bond lengths			Bond angles		
					Counts	RMSZ	$\# Z > 2$	Counts	RMSZ	$\# Z > 2$
4	MES	A	2013	-	11,12,12	1.19	1 (9%)	14,16,16	6.80	9 (64%)
5	GOL	A	2016	-	5,5,5	0.43	0	5,5,5	0.54	0
4	MES	B	2014	-	11,12,12	1.29	2 (18%)	14,16,16	7.37	8 (57%)
5	GOL	B	2017	-	5,5,5	0.36	0	5,5,5	0.34	0
5	GOL	C	2018	-	5,5,5	0.29	0	5,5,5	0.30	0
4	MES	D	2015	-	11,12,12	3.66	3 (27%)	14,16,16	6.31	8 (57%)
5	GOL	D	2019	-	5,5,5	0.32	0	5,5,5	0.36	0

In the following table, the Chirals column lists the number of chiral outliers, the number of chiral centers analysed, the number of these observed in the model and the number defined in the chemical component dictionary. Similar counts are reported in the Torsion and Rings columns. '-' means no outliers of that kind were identified.

Mol	Type	Chain	Res	Link	Chirals	Torsions	Rings
4	MES	A	2013	-	-	0/6/14/14	0/1/1/1
5	GOL	A	2016	-	-	0/4/4/4	0/0/0/0
4	MES	B	2014	-	-	0/6/14/14	0/1/1/1
5	GOL	B	2017	-	-	0/4/4/4	0/0/0/0
5	GOL	C	2018	-	-	0/4/4/4	0/0/0/0
4	MES	D	2015	-	-	0/6/14/14	0/1/1/1
5	GOL	D	2019	-	-	0/4/4/4	0/0/0/0

All (6) bond length outliers are listed below:

Mol	Chain	Res	Type	Atoms	Z	Observed(Å)	Ideal(Å)
4	B	2014	MES	O2S-S	2.06	1.51	1.45
4	A	2013	MES	O1S-S	2.43	1.52	1.45
4	B	2014	MES	O1S-S	2.52	1.53	1.45
4	D	2015	MES	O2S-S	4.43	1.59	1.45
4	D	2015	MES	O3S-S	7.23	1.65	1.46
4	D	2015	MES	O1S-S	8.35	1.71	1.45

All (25) bond angle outliers are listed below:

Mol	Chain	Res	Type	Atoms	Z	Observed(°)	Ideal(°)
4	A	2013	MES	O3S-S-O2S	-12.94	81.50	111.61
4	D	2015	MES	O3S-S-O1S	-12.65	82.16	111.61
4	D	2015	MES	O3S-S-O2S	-12.17	83.28	111.61
4	B	2014	MES	O3S-S-O2S	-11.92	83.87	111.61
4	B	2014	MES	O3S-S-O1S	-11.54	84.74	111.61
4	A	2013	MES	O3S-S-O1S	-10.82	86.44	111.61
4	A	2013	MES	O1-C6-C5	-2.59	105.89	111.84
4	B	2014	MES	O1-C6-C5	2.01	116.44	111.84
4	A	2013	MES	C7-N4-C3	2.55	117.79	111.27
4	A	2013	MES	O2S-S-O1S	2.73	123.42	113.48
4	A	2013	MES	C7-N4-C5	2.78	118.39	111.27
4	B	2014	MES	C7-N4-C3	2.89	118.67	111.27
4	D	2015	MES	C7-N4-C5	3.10	119.23	111.27
4	D	2015	MES	O2S-S-O1S	3.19	125.10	113.48
4	D	2015	MES	C7-N4-C3	3.42	120.03	111.27
4	B	2014	MES	C7-N4-C5	3.83	121.09	111.27
4	B	2014	MES	C5-N4-C3	5.22	120.20	108.90
4	D	2015	MES	C5-N4-C3	5.46	120.73	108.90
4	A	2013	MES	C5-N4-C3	6.89	123.82	108.90
4	D	2015	MES	O1S-S-C8	9.49	115.00	106.91
4	D	2015	MES	O2S-S-C8	9.78	115.25	106.91
4	A	2013	MES	O1S-S-C8	10.81	116.13	106.91
4	A	2013	MES	O2S-S-C8	12.91	117.92	106.91
4	B	2014	MES	O1S-S-C8	14.14	118.97	106.91
4	B	2014	MES	O2S-S-C8	15.00	119.70	106.91

There are no chirality outliers.

There are no torsion outliers.

There are no ring outliers.

2 monomers are involved in 6 short contacts:

Mol	Chain	Res	Type	Clashes	Symm-Clashes
4	B	2014	MES	4	0
4	D	2015	MES	2	0

5.7 Other polymers ⓘ

There are no such residues in this entry.

5.8 Polymer linkage issues ⓘ

There are no chain breaks in this entry.

6 Fit of model and data ⓘ

6.1 Protein, DNA and RNA chains ⓘ

In the following table, the column labelled ‘#RSRZ> 2’ contains the number (and percentage) of RSRZ outliers, followed by percent RSRZ outliers for the chain as percentile scores relative to all X-ray entries and entries of similar resolution. The OWAB column contains the minimum, median, 95th percentile and maximum values of the occupancy-weighted average B-factor per residue. The column labelled ‘Q< 0.9’ lists the number of (and percentage) of residues with an average occupancy less than 0.9.

Mol	Chain	Analysed	<RSRZ>	#RSRZ>2	OWAB(Å ²)	Q<0.9
1	A	533/535 (99%)	0.28	16 (3%) 54 53	32, 40, 49, 59	0
1	B	533/535 (99%)	0.23	18 (3%) 49 47	32, 39, 47, 54	0
1	C	533/535 (99%)	1.28	130 (24%) 1 1	38, 50, 63, 68	0
1	D	533/535 (99%)	0.35	18 (3%) 49 47	32, 42, 51, 59	0
All	All	2132/2140 (99%)	0.53	182 (8%) 13 12	32, 42, 56, 68	0

All (182) RSRZ outliers are listed below:

Mol	Chain	Res	Type	RSRZ
1	C	361	PRO	6.9
1	B	151	ASP	6.2
1	C	306	GLY	5.9
1	C	337	ASP	5.2
1	C	338	THR	5.0
1	C	22	GLY	4.7
1	C	481	MET	4.5
1	C	274	GLY	4.4
1	C	256	HIS	4.3
1	C	199	TYR	4.3
1	C	197	TYR	4.3
1	C	318	SER	4.2
1	A	151	ASP	4.2
1	C	4	ILE	4.2
1	C	135	GLU	4.1
1	C	483	TRP	4.0
1	C	468	GLN	3.9
1	C	115	ALA	3.9
1	C	456	ASP	3.8
1	C	137	GLY	3.8
1	C	8	ILE	3.7

Continued on next page...

Continued from previous page...

Mol	Chain	Res	Type	RSRZ
1	C	195	ASN	3.7
1	C	457	ASP	3.6
1	C	46	LEU	3.6
1	C	325	GLU	3.5
1	C	313	GLU	3.5
1	D	320	GLU	3.5
1	C	219	THR	3.5
1	C	320	GLU	3.5
1	C	260	TRP	3.5
1	C	21	VAL	3.5
1	C	305	VAL	3.5
1	C	300	GLY	3.5
1	C	222	TYR	3.5
1	D	482	ASN	3.5
1	A	320	GLU	3.4
1	C	503	ARG	3.3
1	C	360	ARG	3.3
1	C	220	SER	3.3
1	D	481	MET	3.3
1	C	482	ASN	3.2
1	D	458	ILE	3.2
1	C	273	GLU	3.2
1	B	509	ALA	3.2
1	C	389	HIS	3.1
1	C	299	ASP	3.1
1	C	339	LEU	3.1
1	C	80	TYR	3.1
1	C	478	PHE	3.1
1	C	24	ASP	3.1
1	D	273	GLU	3.1
1	C	284	CYS	3.0
1	C	315	ASP	3.0
1	C	50	ARG	3.0
1	C	261	PHE	3.0
1	C	322	VAL	3.0
1	A	273	GLU	2.9
1	A	300	GLY	2.9
1	C	495	LEU	2.9
1	C	283	TYR	2.9
1	C	460	TYR	2.9
1	C	53	ALA	2.8
1	C	255	THR	2.8

Continued on next page...

Continued from previous page...

Mol	Chain	Res	Type	RSRZ
1	C	48	ASN	2.8
1	C	5	LYS	2.8
1	C	323	SER	2.8
1	C	316	GLY	2.8
1	C	328	TYR	2.8
1	B	167	GLN	2.7
1	C	229	PRO	2.7
1	C	86	TRP	2.7
1	B	166	GLU	2.7
1	C	52	VAL	2.7
1	C	455	PRO	2.7
1	B	175	LYS	2.7
1	B	195	ASN	2.6
1	B	173	GLU	2.6
1	C	448	ARG	2.6
1	A	195	ASN	2.6
1	D	338	THR	2.6
1	D	298	LYS	2.6
1	C	111	THR	2.6
1	C	520	GLY	2.6
1	C	531	LEU	2.6
1	C	395	LYS	2.6
1	C	387	HIS	2.5
1	C	402	THR	2.5
1	B	284	CYS	2.5
1	C	173	GLU	2.5
1	C	38	VAL	2.5
1	C	452	ILE	2.5
1	D	448	ARG	2.5
1	A	237	TRP	2.5
1	B	219	THR	2.5
1	C	10	THR	2.5
1	C	296	GLU	2.5
1	C	330	GLU	2.5
1	C	20	ARG	2.5
1	C	198	TYR	2.5
1	C	529	TYR	2.5
1	C	310	PRO	2.5
1	C	151	ASP	2.5
1	A	224	PRO	2.4
1	B	140	TYR	2.4
1	C	88	ILE	2.4

Continued on next page...

Continued from previous page...

Mol	Chain	Res	Type	RSRZ
1	D	456	ASP	2.4
1	C	160	LEU	2.4
1	C	257	THR	2.4
1	C	401	THR	2.4
1	A	229	PRO	2.4
1	C	428	GLU	2.4
1	C	230	ASP	2.4
1	C	42	HIS	2.4
1	C	314	ILE	2.4
1	C	329	ASP	2.4
1	C	354	ILE	2.4
1	D	151	ASP	2.4
1	C	343	PHE	2.4
1	D	219	THR	2.4
1	C	307	GLY	2.4
1	C	527	PHE	2.4
1	C	87	LEU	2.3
1	C	107	VAL	2.3
1	C	466	THR	2.3
1	B	224	PRO	2.3
1	A	173	GLU	2.3
1	B	481	MET	2.3
1	C	528	ASP	2.3
1	C	7	PRO	2.3
1	C	166	GLU	2.3
1	C	294	ARG	2.3
1	D	50	ARG	2.3
1	C	335	ASP	2.3
1	C	485	ASP	2.3
1	C	241	ARG	2.3
1	D	322	VAL	2.3
1	D	325	GLU	2.3
1	D	446	PRO	2.2
1	A	316	GLY	2.2
1	C	526	ASP	2.2
1	D	299	ASP	2.2
1	B	135	GLU	2.2
1	A	503	ARG	2.2
1	C	47	LYS	2.2
1	C	271	PRO	2.2
1	C	43	SER	2.2
1	C	311	SER	2.2

Continued on next page...

Continued from previous page...

Mol	Chain	Res	Type	RSRZ
1	C	319	VAL	2.2
1	B	306	GLY	2.2
1	C	196	GLY	2.2
1	C	110	ASP	2.2
1	C	399	ARG	2.2
1	D	389	HIS	2.2
1	A	495	LEU	2.2
1	D	307	GLY	2.2
1	C	522	ASN	2.2
1	C	266	THR	2.2
1	C	83	GLY	2.1
1	C	459	GLU	2.1
1	A	197	TYR	2.1
1	C	244	LEU	2.1
1	B	136	ASP	2.1
1	C	253	VAL	2.1
1	C	317	PRO	2.1
1	C	228	HIS	2.1
1	C	535	LEU	2.1
1	A	135	GLU	2.1
1	C	16	PRO	2.1
1	C	484	ILE	2.1
1	C	106	LEU	2.1
1	C	265	LEU	2.1
1	B	285	PRO	2.1
1	B	337	ASP	2.1
1	C	40	ILE	2.1
1	B	495	LEU	2.1
1	A	318	SER	2.1
1	A	274	GLY	2.0
1	C	23	ASP	2.0
1	C	202	THR	2.0
1	C	385	TRP	2.0
1	C	132	PHE	2.0
1	C	462	TYR	2.0

6.2 Non-standard residues in protein, DNA, RNA chains ⓘ

There are no non-standard protein/DNA/RNA residues in this entry.

6.3 Carbohydrates ⓘ

In the following table, the Atoms column lists the number of modelled atoms in the group and the number defined in the chemical component dictionary. LLDF column lists the quality of electron density of the group with respect to its neighbouring residues in protein, DNA or RNA chains. The B-factors column lists the minimum, median, 95th percentile and maximum values of B factors of atoms in the group. The column labelled 'Q< 0.9' lists the number of atoms with occupancy less than 0.9.

Mol	Type	Chain	Res	Atoms	RSCC	RSR	LLDF	B-factors(Å ²)	Q<0.9
2	XYS	C	2010	10/10	0.12	0.64	16.15	74,77,78,79	0
2	XYS	D	2011	9/10	0.54	0.48	13.80	55,58,62,63	1
2	XYS	D	2012	10/10	0.26	0.50	11.10	62,65,67,69	0
2	XYS	B	2007	9/10	0.71	0.36	10.86	58,62,66,66	1
2	XYS	A	2005	9/10	0.65	0.38	10.27	56,60,65,65	1
2	XYS	A	2006	10/10	0.33	0.36	5.66	66,69,70,71	0
2	XYS	C	2009	9/10	0.59	0.32	4.47	68,69,71,71	1
2	XYS	B	2008	10/10	0.58	0.29	3.27	68,70,71,72	0

6.4 Ligands ⓘ

In the following table, the Atoms column lists the number of modelled atoms in the group and the number defined in the chemical component dictionary. LLDF column lists the quality of electron density of the group with respect to its neighbouring residues in protein, DNA or RNA chains. The B-factors column lists the minimum, median, 95th percentile and maximum values of B factors of atoms in the group. The column labelled 'Q< 0.9' lists the number of atoms with occupancy less than 0.9.

Mol	Type	Chain	Res	Atoms	RSCC	RSR	LLDF	B-factors(Å ²)	Q<0.9
4	MES	D	2015	12/12	0.49	0.47	16.51	125,125,126,126	0
4	MES	B	2014	12/12	0.69	0.31	8.80	78,78,79,79	0
5	GOL	B	2017	6/6	0.92	0.16	1.07	49,51,52,52	0
4	MES	A	2013	12/12	0.94	0.15	0.71	47,50,51,52	0
5	GOL	A	2016	6/6	0.91	0.12	-0.52	37,39,41,41	0
5	GOL	D	2019	6/6	0.89	0.11	-0.95	36,41,42,44	0
3	CA	D	2004	1/1	0.94	0.12	-1.10	56,56,56,56	0
5	GOL	C	2018	6/6	0.88	0.12	-1.31	52,54,54,55	0
3	CA	C	2003	1/1	0.68	0.15	-1.81	75,75,75,75	0
3	CA	A	2001	1/1	0.97	0.07	-2.15	36,36,36,36	0
3	CA	B	2002	1/1	0.99	0.04	-4.44	38,38,38,38	0

6.5 Other polymers ⓘ

There are no such residues in this entry.