



Full wwPDB X-ray Structure Validation Report ⓘ

Feb 1, 2016 – 08:34 AM GMT

PDB ID : 3F7I
Title : Structure of an ML-IAP/XIAP chimera bound to a peptidomimetic
Authors : Franklin, M.C.; Fairbrother, W.J.; Cohen, F.
Deposited on : 2008-11-09
Resolution : 1.90 Å(reported)

This is a Full wwPDB X-ray Structure Validation Report for a publicly released PDB entry.
We welcome your comments at validation@mail.wwpdb.org
A user guide is available at
<http://wwpdb.org/validation/2016/XrayValidationReportHelp>
with specific help available everywhere you see the ⓘ symbol.

The following versions of software and data (see [references ⓘ](#)) were used in the production of this report:

MolProbity : 4.02b-467
Mogul : 1.7 (RC4), CSD as536be (2015)
Xtriage (Phenix) : 1.9-1692
EDS : rb-20026688
Percentile statistics : 20151230.v01 (using entries in the PDB archive December 30th 2015)
Refmac : 5.8.0135
CCP4 : 6.5.0
Ideal geometry (proteins) : Engh & Huber (2001)
Ideal geometry (DNA, RNA) : Parkinson et al. (1996)
Validation Pipeline (wwPDB-VP) : trunk26865

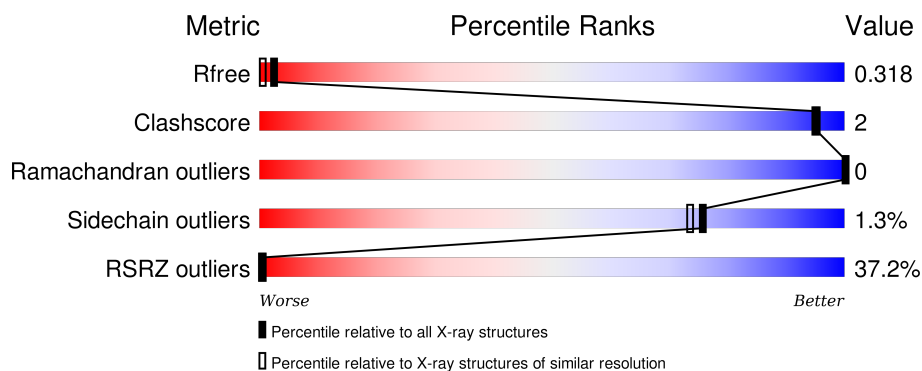
1 Overall quality at a glance

The following experimental techniques were used to determine the structure:

X-RAY DIFFRACTION

The reported resolution of this entry is 1.90 Å.

Percentile scores (ranging between 0-100) for global validation metrics of the entry are shown in the following graphic. The table shows the number of entries on which the scores are based.



Metric	Whole archive (#Entries)	Similar resolution (#Entries, resolution range(Å))
R_{free}	91344	4755 (1.90-1.90)
Clashscore	102246	5398 (1.90-1.90)
Ramachandran outliers	100387	5338 (1.90-1.90)
Sidechain outliers	100360	5339 (1.90-1.90)
RSRZ outliers	91569	4766 (1.90-1.90)

The table below summarises the geometric issues observed across the polymeric chains and their fit to the electron density. The red, orange, yellow and green segments on the lower bar indicate the fraction of residues that contain outliers for ≥ 3 , 2, 1 and 0 types of geometric quality criteria. A grey segment represents the fraction of residues that are not modelled. The numeric value for each fraction is indicated below the corresponding segment, with a dot representing fractions $\leq 5\%$. The upper red bar (where present) indicates the fraction of residues that have poor fit to the electron density. The numeric value is given above the bar.

Mol	Chain	Length	Quality of chain
1	A	133	<div> <div>29%</div> <div>67%</div> <div>32%</div> </div>
1	B	133	<div> <div>23%</div> <div>66%</div> <div>30%</div> </div>

The following table lists non-polymeric compounds, carbohydrate monomers and non-standard residues in protein, DNA, RNA chains that are outliers for geometric or electron-density-fit criteria:

Mol	Type	Chain	Res	Chirality	Geometry	Clashes	Electron density
3	G13	A	1	-	-	-	X
3	G13	B	1	-	-	-	X
4	LI	B	1002	-	-	-	X
5	BTB	B	173	-	-	-	X
6	EDO	B	174	-	-	-	X

2 Entry composition

There are 7 unique types of molecules in this entry. The entry contains 1772 atoms, of which 0 are hydrogens and 0 are deuteriums.

In the tables below, the ZeroOcc column contains the number of atoms modelled with zero occupancy, the AltConf column contains the number of residues with at least one atom in alternate conformation and the Trace column contains the number of residues modelled with at most 2 atoms.

- Molecule 1 is a protein called Baculoviral IAP repeat-containing protein 7.

Mol	Chain	Residues	Atoms					ZeroOcc	AltConf	Trace
1	A	90	Total	C	N	O	S	0	0	0
			727	473	124	126	4			
1	B	93	Total	C	N	O	S	0	0	0
			752	489	129	130	4			

There are 68 discrepancies between the modelled and reference sequences:

Chain	Residue	Modelled	Actual	Comment	Reference
A	40	MET	-	EXPRESSION TAG	UNP Q6R308
A	41	GLY	-	EXPRESSION TAG	UNP Q6R308
A	42	SER	-	EXPRESSION TAG	UNP Q6R308
A	43	SER	-	EXPRESSION TAG	UNP Q6R308
A	44	HIS	-	EXPRESSION TAG	UNP Q6R308
A	45	HIS	-	EXPRESSION TAG	UNP Q6R308
A	46	HIS	-	EXPRESSION TAG	UNP Q6R308
A	47	HIS	-	EXPRESSION TAG	UNP Q6R308
A	48	HIS	-	EXPRESSION TAG	UNP Q6R308
A	49	HIS	-	EXPRESSION TAG	UNP Q6R308
A	50	SER	-	EXPRESSION TAG	UNP Q6R308
A	51	SER	-	EXPRESSION TAG	UNP Q6R308
A	52	GLY	-	EXPRESSION TAG	UNP Q6R308
A	53	GLU	-	EXPRESSION TAG	UNP Q6R308
A	54	VAL	-	EXPRESSION TAG	UNP Q6R308
A	55	PRO	-	EXPRESSION TAG	UNP Q6R308
A	56	ARG	-	EXPRESSION TAG	UNP Q6R308
A	57	GLY	-	EXPRESSION TAG	UNP Q6R308
A	58	SER	-	EXPRESSION TAG	UNP Q6R308
A	59	HIS	-	EXPRESSION TAG	UNP Q6R308
A	60	MET	-	EXPRESSION TAG	UNP Q6R308
A	61	LEU	-	EXPRESSION TAG	UNP Q6R308
A	62	GLU	-	EXPRESSION TAG	UNP Q6R308
A	150	GLY	SER	ENGINEERED	UNP Q6R308
A	160	GLN	ARG	ENGINEERED	UNP Q6R308

Continued on next page...

Continued from previous page...

Chain	Residue	Modelled	Actual	Comment	Reference
A	161	GLU	ASP	ENGINEERED	UNP Q6R308
A	162	TYR	PHE	ENGINEERED	UNP Q6R308
A	163	ILE	VAL	ENGINEERED	UNP Q6R308
A	164	ASN	HIS	ENGINEERED	UNP Q6R308
A	165	ASN	SER	ENGINEERED	UNP Q6R308
A	166	ILE	VAL	ENGINEERED	UNP Q6R308
A	167	HIS	GLN	ENGINEERED	UNP Q6R308
A	168	LEU	GLU	ENGINEERED	UNP Q6R308
A	172	LEU	GLN	ENGINEERED	UNP Q6R308
B	40	MET	-	EXPRESSION TAG	UNP Q6R308
B	41	GLY	-	EXPRESSION TAG	UNP Q6R308
B	42	SER	-	EXPRESSION TAG	UNP Q6R308
B	43	SER	-	EXPRESSION TAG	UNP Q6R308
B	44	HIS	-	EXPRESSION TAG	UNP Q6R308
B	45	HIS	-	EXPRESSION TAG	UNP Q6R308
B	46	HIS	-	EXPRESSION TAG	UNP Q6R308
B	47	HIS	-	EXPRESSION TAG	UNP Q6R308
B	48	HIS	-	EXPRESSION TAG	UNP Q6R308
B	49	HIS	-	EXPRESSION TAG	UNP Q6R308
B	50	SER	-	EXPRESSION TAG	UNP Q6R308
B	51	SER	-	EXPRESSION TAG	UNP Q6R308
B	52	GLY	-	EXPRESSION TAG	UNP Q6R308
B	53	GLU	-	EXPRESSION TAG	UNP Q6R308
B	54	VAL	-	EXPRESSION TAG	UNP Q6R308
B	55	PRO	-	EXPRESSION TAG	UNP Q6R308
B	56	ARG	-	EXPRESSION TAG	UNP Q6R308
B	57	GLY	-	EXPRESSION TAG	UNP Q6R308
B	58	SER	-	EXPRESSION TAG	UNP Q6R308
B	59	HIS	-	EXPRESSION TAG	UNP Q6R308
B	60	MET	-	EXPRESSION TAG	UNP Q6R308
B	61	LEU	-	EXPRESSION TAG	UNP Q6R308
B	62	GLU	-	EXPRESSION TAG	UNP Q6R308
B	150	GLY	SER	ENGINEERED	UNP Q6R308
B	160	GLN	ARG	ENGINEERED	UNP Q6R308
B	161	GLU	ASP	ENGINEERED	UNP Q6R308
B	162	TYR	PHE	ENGINEERED	UNP Q6R308
B	163	ILE	VAL	ENGINEERED	UNP Q6R308
B	164	ASN	HIS	ENGINEERED	UNP Q6R308
B	165	ASN	SER	ENGINEERED	UNP Q6R308
B	166	ILE	VAL	ENGINEERED	UNP Q6R308
B	167	HIS	GLN	ENGINEERED	UNP Q6R308
B	168	LEU	GLU	ENGINEERED	UNP Q6R308

Continued on next page...

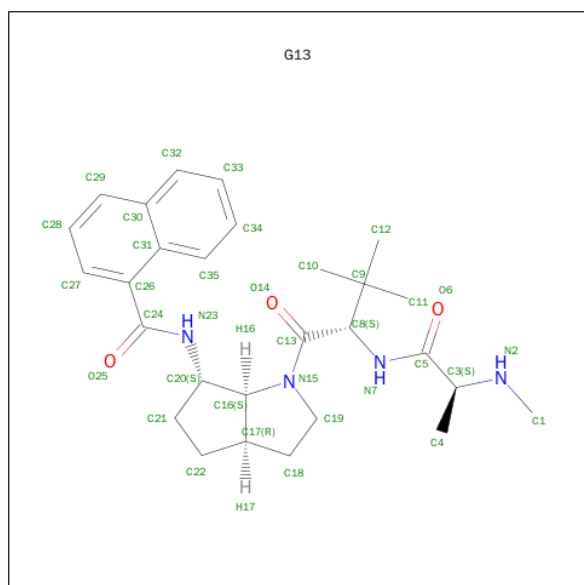
Continued from previous page...

Chain	Residue	Modelled	Actual	Comment	Reference
B	172	LEU	GLN	ENGINEERED	UNP Q6R308

- Molecule 2 is ZINC ION (three-letter code: ZN) (formula: Zn).

Mol	Chain	Residues	Atoms	ZeroOcc	AltConf
2	B	1	Total Zn 1 1	0	0
2	A	1	Total Zn 1 1	0	0

- Molecule 3 is N-[(3AR,6S,6AS)-1-(N-METHYL-L-ALANYL-3-METHYL-L-VALYL)OCTAHYDROCYCLOPENTA[B]PYRROL-6-YL]NAPHTHALENE-1-CARBOXAMIDE (three-letter code: G13) (formula: C₂₈H₃₈N₄O₃).

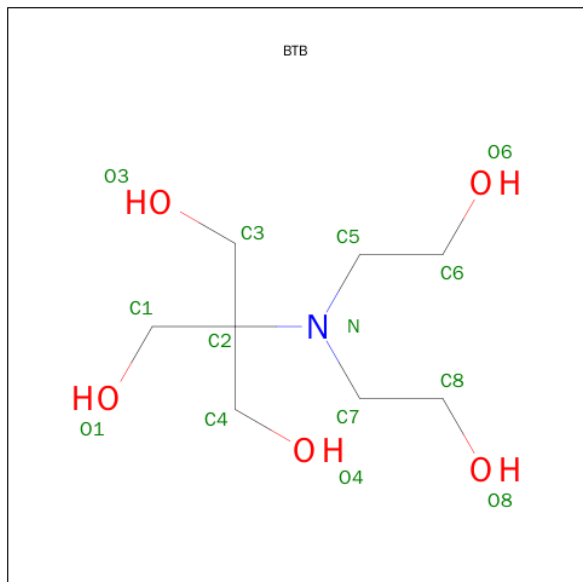


Mol	Chain	Residues	Atoms	ZeroOcc	AltConf
3	A	1	Total C N O 35 28 4 3	0	0
3	B	1	Total C N O 35 28 4 3	0	0

- Molecule 4 is LITHIUM ION (three-letter code: LI) (formula: Li).

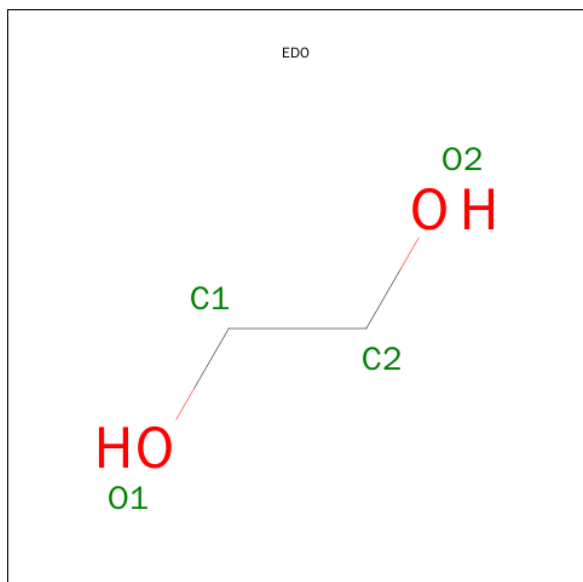
Mol	Chain	Residues	Atoms	ZeroOcc	AltConf
4	B	1	Total Li 1 1	0	0

- Molecule 5 is 2-[BIS-(2-HYDROXY-ETHYL)-AMINO]-2-HYDROXYMETHYL-PROPAN E-1,3-DIOL (three-letter code: BTB) (formula: $C_8H_{19}NO_5$).



Mol	Chain	Residues	Atoms				ZeroOcc	AltConf
5	B	1	Total	C	N	O	0	0
			14	8	1	5		

- Molecule 6 is 1,2-ETHANEDIOL (three-letter code: EDO) (formula: $C_2H_6O_2$).



Mol	Chain	Residues	Atoms			ZeroOcc	AltConf
6	B	1	Total	C	O	0	0
			4	2	2		

Continued on next page...

Continued from previous page...

Mol	Chain	Residues	Atoms			ZeroOcc	AltConf
6	B	1	Total	C	O	0	0
			4	2	2		

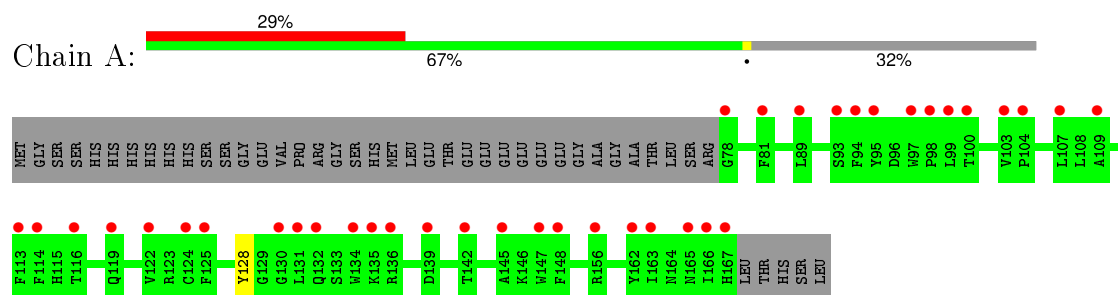
- Molecule 7 is water.

Mol	Chain	Residues	Atoms		ZeroOcc	AltConf
7	A	94	Total	O	0	0
			94	94		
7	B	104	Total	O	0	0
			104	104		

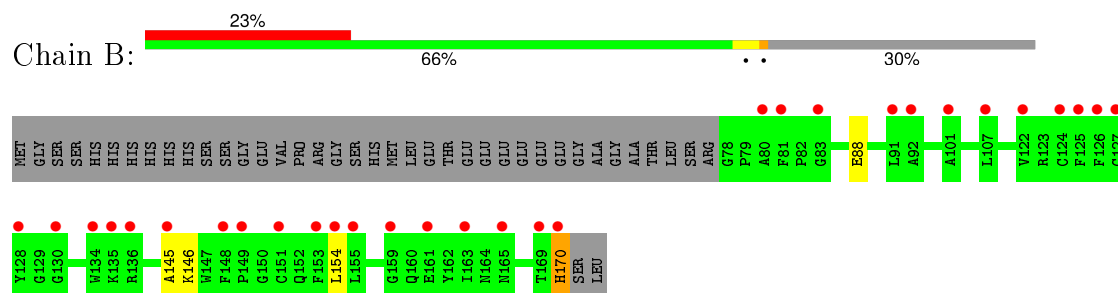
3 Residue-property plots [i](#)

These plots are drawn for all protein, RNA and DNA chains in the entry. The first graphic for a chain summarises the proportions of errors displayed in the second graphic. The second graphic shows the sequence view annotated by issues in geometry and electron density. Residues are color-coded according to the number of geometric quality criteria for which they contain at least one outlier: green = 0, yellow = 1, orange = 2 and red = 3 or more. A red dot above a residue indicates a poor fit to the electron density ($\text{RSRZ} > 2$). Stretches of 2 or more consecutive residues without any outlier are shown as a green connector. Residues present in the sample, but not in the model, are shown in grey.

- Molecule 1: Baculoviral IAP repeat-containing protein 7



- Molecule 1: Baculoviral IAP repeat-containing protein 7



4 Data and refinement statistics

Property	Value	Source
Space group	P 41 21 2	Depositor
Cell constants a, b, c, α , β , γ	87.16Å 87.16Å 73.69Å 90.00° 90.00° 90.00°	Depositor
Resolution (Å)	19.80 – 1.90 47.28 – 1.78	Depositor EDS
% Data completeness (in resolution range)	99.9 (19.80-1.90) 98.3 (47.28-1.78)	Depositor EDS
R_{merge}	0.12	Depositor
R_{sym}	0.12	Depositor
$\langle I/\sigma(I) \rangle$ ¹	4.53 (at 1.78Å)	Xtriage
Refinement program	REFMAC 5.2.0019	Depositor
R, R_{free}	0.155 , 0.181 0.297 , 0.318	Depositor DCC
R_{free} test set	1146 reflections (5.26%)	DCC
Wilson B-factor (Å ²)	14.9	Xtriage
Anisotropy	0.577	Xtriage
Bulk solvent k_{sol} (e/Å ³), B_{sol} (Å ²)	0.36 , 31.4	EDS
Estimated twinning fraction	No twinning to report.	Xtriage
L-test for twinning ²	$\langle L \rangle = 0.49$, $\langle L^2 \rangle = 0.33$	Xtriage
Outliers	0 of 27221 reflections	Xtriage
F_o, F_c correlation	0.86	EDS
Total number of atoms	1772	wwPDB-VP
Average B, all atoms (Å ²)	27.0	wwPDB-VP

Xtriage's analysis on translational NCS is as follows: *The largest off-origin peak in the Patterson function is 4.98% of the height of the origin peak. No significant pseudotranslation is detected.*

¹Intensities estimated from amplitudes.

²Theoretical values of $\langle |L| \rangle$, $\langle L^2 \rangle$ for acentric reflections are 0.5, 0.375 respectively for untwinned datasets, and 0.333, 0.2 for perfectly twinned datasets.

5 Model quality

5.1 Standard geometry

Bond lengths and bond angles in the following residue types are not validated in this section: ZN, BTB, G13, EDO, LI

The Z score for a bond length (or angle) is the number of standard deviations the observed value is removed from the expected value. A bond length (or angle) with $|Z| > 5$ is considered an outlier worth inspection. RMSZ is the root-mean-square of all Z scores of the bond lengths (or angles).

Mol	Chain	Bond lengths		Bond angles	
		RMSZ	$\# Z > 5$	RMSZ	$\# Z > 5$
1	A	0.35	0/756	0.47	0/1026
1	B	0.35	0/782	0.46	0/1062
All	All	0.35	0/1538	0.46	0/2088

There are no bond length outliers.

There are no bond angle outliers.

There are no chirality outliers.

There are no planarity outliers.

5.2 Too-close contacts

In the following table, the Non-H and H(model) columns list the number of non-hydrogen atoms and hydrogen atoms in the chain respectively. The H(added) column lists the number of hydrogen atoms added and optimized by MolProbity. The Clashes column lists the number of clashes within the asymmetric unit, whereas Symm-Clashes lists symmetry related clashes.

Mol	Chain	Non-H	H(model)	H(added)	Clashes	Symm-Clashes
1	A	727	0	670	0	0
1	B	752	0	695	5	0
2	A	1	0	0	0	0
2	B	1	0	0	0	0
3	A	35	0	38	0	0
3	B	35	0	38	0	0
4	B	1	0	0	0	0
5	B	14	0	19	0	0
6	B	8	0	11	0	0
7	A	94	0	0	0	0
7	B	104	0	0	1	1
All	All	1772	0	1471	5	1

The all-atom clashscore is defined as the number of clashes found per 1000 atoms (including hydrogen atoms). The all-atom clashscore for this structure is 2.

All (5) close contacts within the same asymmetric unit are listed below, sorted by their clash magnitude.

Atom-1	Atom-2	Interatomic distance (Å)	Clash overlap (Å)
1:B:88:GLU:HG2	7:B:293:HOH:O	1.87	0.74
1:B:146:LYS:HE2	1:B:170:HIS:HE2	1.82	0.45
1:B:146:LYS:HE2	1:B:170:HIS:NE2	2.33	0.44
1:B:146:LYS:HE2	1:B:170:HIS:CD2	2.53	0.43
1:B:145:ALA:HA	1:B:154:LEU:HD21	2.03	0.40

All (1) symmetry-related close contacts are listed below. The label for Atom-2 includes the symmetry operator and encoded unit-cell translations to be applied.

Atom-1	Atom-2	Interatomic distance (Å)	Clash overlap (Å)
7:B:197:HOH:O	7:B:278:HOH:O[7_556]	2.12	0.08

5.3 Torsion angles [i](#)

5.3.1 Protein backbone [i](#)

In the following table, the Percentiles column shows the percent Ramachandran outliers of the chain as a percentile score with respect to all X-ray entries followed by that with respect to entries of similar resolution.

The Analysed column shows the number of residues for which the backbone conformation was analysed, and the total number of residues.

Mol	Chain	Analysed	Favoured	Allowed	Outliers	Percentiles	
1	A	88/133 (66%)	87 (99%)	1 (1%)	0	100	100
1	B	91/133 (68%)	89 (98%)	2 (2%)	0	100	100
All	All	179/266 (67%)	176 (98%)	3 (2%)	0	100	100

There are no Ramachandran outliers to report.

5.3.2 Protein sidechains [i](#)

In the following table, the Percentiles column shows the percent sidechain outliers of the chain as a percentile score with respect to all X-ray entries followed by that with respect to entries of similar resolution.

The Analysed column shows the number of residues for which the sidechain conformation was analysed, and the total number of residues.

Mol	Chain	Analysed	Rotameric	Outliers	Percentiles	
1	A	73/109 (67%)	72 (99%)	1 (1%)	74	71
1	B	76/109 (70%)	75 (99%)	1 (1%)	76	73
All	All	149/218 (68%)	147 (99%)	2 (1%)	76	73

All (2) residues with a non-rotameric sidechain are listed below:

Mol	Chain	Res	Type
1	A	128	TYR
1	B	170	HIS

Some sidechains can be flipped to improve hydrogen bonding and reduce clashes. All (1) such sidechains are listed below:

Mol	Chain	Res	Type
1	B	132	GLN

5.3.3 RNA [i](#)

There are no RNA molecules in this entry.

5.4 Non-standard residues in protein, DNA, RNA chains [i](#)

There are no non-standard protein/DNA/RNA residues in this entry.

5.5 Carbohydrates [i](#)

There are no carbohydrates in this entry.

5.6 Ligand geometry [i](#)

Of 8 ligands modelled in this entry, 3 are monoatomic - leaving 5 for Mogul analysis.

In the following table, the Counts columns list the number of bonds (or angles) for which Mogul statistics could be retrieved, the number of bonds (or angles) that are observed in the model and the number of bonds (or angles) that are defined in the chemical component dictionary. The Link column lists molecule types, if any, to which the group is linked. The Z score for a bond length (or angle) is the number of standard deviations the observed value is removed from the expected

value. A bond length (or angle) with $|Z| > 2$ is considered an outlier worth inspection. RMSZ is the root-mean-square of all Z scores of the bond lengths (or angles).

Mol	Type	Chain	Res	Link	Bond lengths			Bond angles		
					Counts	RMSZ	$\# Z > 2$	Counts	RMSZ	$\# Z > 2$
3	G13	A	1	-	37,38,38	0.79	0	51,56,56	1.28	8 (15%)
3	G13	B	1	-	37,38,38	0.86	0	51,56,56	1.17	6 (11%)
5	BTB	B	173	-	12,13,13	0.30	0	8,16,16	0.94	1 (12%)
6	EDO	B	174	4	3,3,3	0.54	0	2,2,2	0.33	0
6	EDO	B	175	-	3,3,3	0.43	0	2,2,2	0.47	0

In the following table, the Chirals column lists the number of chiral outliers, the number of chiral centers analysed, the number of these observed in the model and the number defined in the chemical component dictionary. Similar counts are reported in the Torsion and Rings columns. '-' means no outliers of that kind were identified.

Mol	Type	Chain	Res	Link	Chirals	Torsions	Rings
3	G13	A	1	-	-	0/32/54/54	0/4/4/4
3	G13	B	1	-	-	0/32/54/54	0/4/4/4
5	BTB	B	173	-	-	0/21/21/21	0/0/0/0
6	EDO	B	174	4	-	0/1/1/1	0/0/0/0
6	EDO	B	175	-	-	0/1/1/1	0/0/0/0

There are no bond length outliers.

All (15) bond angle outliers are listed below:

Mol	Chain	Res	Type	Atoms	Z	Observed(°)	Ideal(°)
3	B	1	G13	C16-C20-N23	-2.39	109.28	113.11
3	A	1	G13	C16-C20-N23	-2.08	109.78	113.11
3	A	1	G13	C21-C20-N23	-2.04	109.58	112.76
5	B	173	BTB	C7-N-C2	2.08	119.87	113.86
3	B	1	G13	C17-C16-C20	2.09	107.52	101.51
3	A	1	G13	C17-C16-N15	2.16	105.50	102.79
3	A	1	G13	C17-C16-C20	2.16	107.74	101.51
3	B	1	G13	C18-C19-N15	2.20	105.70	103.34
3	B	1	G13	C18-C17-C16	2.26	106.95	103.82
3	A	1	G13	C21-C22-C17	2.40	107.85	103.42
3	B	1	G13	C22-C21-C20	2.50	106.84	103.49
3	A	1	G13	C22-C17-C16	2.71	107.58	103.82
3	B	1	G13	C21-C20-C16	2.91	107.07	103.85
3	A	1	G13	C21-C20-C16	3.08	107.26	103.85
3	A	1	G13	C22-C21-C20	3.19	107.76	103.49

There are no chirality outliers.

There are no torsion outliers.

There are no ring outliers.

No monomer is involved in short contacts.

5.7 Other polymers

There are no such residues in this entry.

5.8 Polymer linkage issues

There are no chain breaks in this entry.

6 Fit of model and data

6.1 Protein, DNA and RNA chains

In the following table, the column labelled ‘#RSRZ> 2’ contains the number (and percentage) of RSRZ outliers, followed by percent RSRZ outliers for the chain as percentile scores relative to all X-ray entries and entries of similar resolution. The OWAB column contains the minimum, median, 95th percentile and maximum values of the occupancy-weighted average B-factor per residue. The column labelled ‘Q< 0.9’ lists the number of (and percentage) of residues with an average occupancy less than 0.9.

Mol	Chain	Analysed	<RSRZ>	#RSRZ>2	OWAB(Å ²)	Q<0.9
1	A	90/133 (67%)	1.97	38 (42%) 0 0	20, 26, 33, 43	0
1	B	93/133 (69%)	1.77	30 (32%) 1 0	20, 25, 33, 52	0
All	All	183/266 (68%)	1.87	68 (37%) 0 0	20, 26, 33, 52	0

All (68) RSRZ outliers are listed below:

Mol	Chain	Res	Type	RSRZ
1	B	170	HIS	5.9
1	B	169	THR	4.6
1	A	166	ILE	4.4
1	B	130	GLY	4.4
1	B	136	ARG	3.7
1	A	134	TRP	3.5
1	B	127	CYS	3.3
1	A	167	HIS	3.3
1	A	147	TRP	3.3
1	A	119	GLN	3.2
1	A	104	PRO	3.2
1	A	107	LEU	3.2
1	A	109	ALA	3.1
1	B	124	CYS	3.1
1	A	131	LEU	3.0
1	A	163	ILE	3.0
1	A	78	GLY	2.9
1	A	139	ASP	2.9
1	A	165	ASN	2.9
1	B	148	PHE	2.9
1	B	153	PHE	2.9
1	A	100	THR	2.9
1	A	124	CYS	2.9
1	A	97	TRP	2.8

Continued on next page...

Continued from previous page...

Mol	Chain	Res	Type	RSRZ
1	A	81	PHE	2.8
1	B	151	CYS	2.8
1	A	130	GLY	2.8
1	A	95	TYR	2.7
1	B	134	TRP	2.7
1	A	156	ARG	2.7
1	A	162	TYR	2.6
1	B	161	GLU	2.6
1	B	125	PHE	2.6
1	B	80	ALA	2.6
1	B	91	LEU	2.5
1	B	145	ALA	2.5
1	A	99	LEU	2.5
1	B	155	LEU	2.5
1	A	148	PHE	2.4
1	B	159	GLY	2.4
1	A	89	LEU	2.4
1	A	94	PHE	2.4
1	B	122	VAL	2.4
1	B	135	LYS	2.3
1	A	132	GLN	2.3
1	B	83	GLY	2.3
1	B	165	ASN	2.3
1	A	125	PHE	2.3
1	B	128	TYR	2.3
1	A	103	VAL	2.2
1	A	122	VAL	2.2
1	B	101	ALA	2.2
1	B	154	LEU	2.2
1	A	135	LYS	2.2
1	A	136	ARG	2.2
1	B	92	ALA	2.2
1	A	98	PRO	2.2
1	A	142	THR	2.2
1	A	114	PHE	2.1
1	B	107	LEU	2.1
1	B	149	PRO	2.1
1	A	113	PHE	2.1
1	B	81	PHE	2.1
1	A	116	THR	2.1
1	B	126	PHE	2.1
1	B	163	ILE	2.1

Continued on next page...

Continued from previous page...

Mol	Chain	Res	Type	RSRZ
1	A	93	SER	2.1
1	A	145	ALA	2.0

6.2 Non-standard residues in protein, DNA, RNA chains [i](#)

There are no non-standard protein/DNA/RNA residues in this entry.

6.3 Carbohydrates [i](#)

There are no carbohydrates in this entry.

6.4 Ligands [i](#)

In the following table, the Atoms column lists the number of modelled atoms in the group and the number defined in the chemical component dictionary. LLDF column lists the quality of electron density of the group with respect to its neighbouring residues in protein, DNA or RNA chains. The B-factors column lists the minimum, median, 95th percentile and maximum values of B factors of atoms in the group. The column labelled 'Q< 0.9' lists the number of atoms with occupancy less than 0.9.

Mol	Type	Chain	Res	Atoms	RSCC	RSR	LLDF	B-factors(Å ²)	Q<0.9
4	LI	B	1002	1/1	0.80	0.40	21.13	24,24,24,24	0
3	G13	A	1	35/35	0.56	0.40	3.74	24,25,26,27	0
5	BTB	B	173	14/14	0.62	0.45	2.90	39,40,44,46	0
3	G13	B	1	35/35	0.50	0.36	2.60	22,26,26,27	0
6	EDO	B	174	4/4	0.76	0.23	2.04	22,23,23,24	0
6	EDO	B	175	4/4	0.84	0.22	0.47	27,30,33,35	0
2	ZN	A	1001	1/1	0.83	0.17	-0.15	26,26,26,26	0
2	ZN	B	1001	1/1	0.91	0.15	-5.47	26,26,26,26	0

6.5 Other polymers [i](#)

There are no such residues in this entry.