



wwPDB X-ray Structure Validation Summary Report ⓘ

Feb 1, 2016 – 08:38 AM GMT

PDB ID : 3FG4
Title : Crystal structure of Delta413-417:GS I805A LOX
Authors : Neau, D.B.; Newcomer, M.E.
Deposited on : 2008-12-04
Resolution : 2.31 Å(reported)

This is a wwPDB X-ray Structure Validation Summary Report for a publicly released PDB entry.
We welcome your comments at validation@mail.wwpdb.org
A user guide is available at
<http://wwpdb.org/validation/2016/XrayValidationReportHelp>
with specific help available everywhere you see the ⓘ symbol.

The following versions of software and data (see [references ⓘ](#)) were used in the production of this report:

MolProbity : 4.02b-467
Mogul : 1.7 (RC4), CSD as536be (2015)
Xtriage (Phenix) : 1.9-1692
EDS : rb-20026688
Percentile statistics : 20151230.v01 (using entries in the PDB archive December 30th 2015)
Refmac : 5.8.0135
CCP4 : 6.5.0
Ideal geometry (proteins) : Engh & Huber (2001)
Ideal geometry (DNA, RNA) : Parkinson et al. (1996)
Validation Pipeline (wwPDB-VP) : trunk26865

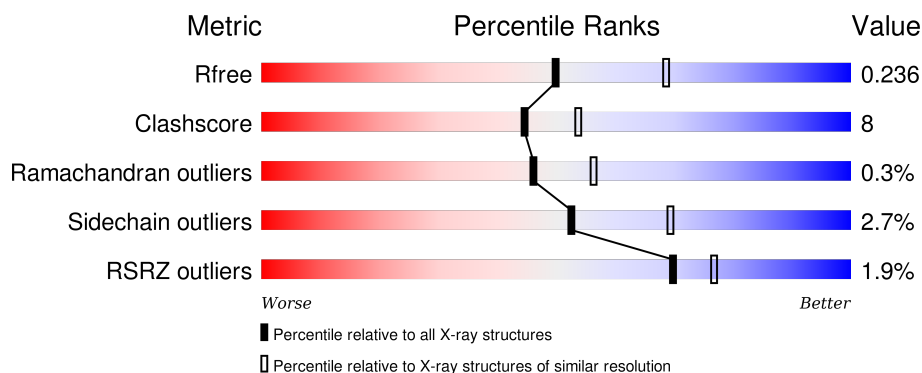
1 Overall quality at a glance ⓘ

The following experimental techniques were used to determine the structure:

X-RAY DIFFRACTION

The reported resolution of this entry is 2.31 Å.

Percentile scores (ranging between 0-100) for global validation metrics of the entry are shown in the following graphic. The table shows the number of entries on which the scores are based.



Metric	Whole archive (#Entries)	Similar resolution (#Entries, resolution range(Å))
R_{free}	91344	4425 (2.34-2.30)
Clashscore	102246	5057 (2.34-2.30)
Ramachandran outliers	100387	5008 (2.34-2.30)
Sidechain outliers	100360	5007 (2.34-2.30)
RSRZ outliers	91569	4432 (2.34-2.30)

The table below summarises the geometric issues observed across the polymeric chains and their fit to the electron density. The red, orange, yellow and green segments on the lower bar indicate the fraction of residues that contain outliers for ≥ 3 , 2, 1 and 0 types of geometric quality criteria. A grey segment represents the fraction of residues that are not modelled. The numeric value for each fraction is indicated below the corresponding segment, with a dot representing fractions $\leq 5\%$. The upper red bar (where present) indicates the fraction of residues that have poor fit to the electron density. The numeric value is given above the bar.

Mol	Chain	Length	Quality of chain
1	A	696	<div> <div>2%</div> <div>82%</div> <div>15%</div> <div>..</div> </div>
1	B	696	<div> <div>3%</div> <div>85%</div> <div>11%</div> <div>..</div> </div>
1	C	696	<div> <div>%</div> <div>84%</div> <div>13%</div> <div>..</div> </div>
1	D	696	<div> <div>2%</div> <div>82%</div> <div>14%</div> <div>..</div> </div>

The following table lists non-polymeric compounds, carbohydrate monomers and non-standard

residues in protein, DNA, RNA chains that are outliers for geometric or electron-density-fit criteria:

Mol	Type	Chain	Res	Chirality	Geometry	Clashes	Electron density
4	ACD	A	2001	-	-	-	X
4	ACD	B	2001	-	-	-	X
4	ACD	C	2001	-	-	-	X
4	ACD	D	2001	-	-	-	X
5	ACY	A	2201[A]	-	-	-	X
5	ACY	A	2201[B]	-	-	X	X
5	ACY	A	2204	-	-	-	X
5	ACY	A	2206	-	-	-	X
5	ACY	B	2201	-	-	-	X
5	ACY	B	2203	-	-	-	X
5	ACY	C	2201	-	-	-	X
5	ACY	C	2202	-	-	-	X
5	ACY	C	2203	-	-	X	-
5	ACY	C	2206	-	-	-	X
5	ACY	D	2202	-	-	X	-
5	ACY	D	2203	-	-	X	X
6	GOL	A	1068[A]	-	-	X	X
6	GOL	A	1068[B]	-	-	-	X
6	GOL	A	2303	-	-	X	-
6	GOL	A	2305	-	-	X	X
6	GOL	C	2301	-	-	-	X
6	GOL	C	2304	-	-	-	X

2 Entry composition

There are 8 unique types of molecules in this entry. The entry contains 23613 atoms, of which 0 are hydrogens and 0 are deuteriums.

In the tables below, the ZeroOcc column contains the number of atoms modelled with zero occupancy, the AltConf column contains the number of residues with at least one atom in alternate conformation and the Trace column contains the number of residues modelled with at most 2 atoms.

- Molecule 1 is a protein called Allene oxide synthase-lipoxygenase protein.

Mol	Chain	Residues	Atoms					ZeroOcc	AltConf	Trace
1	A	682	Total	C	N	O	S	0	12	0
			5487	3504	928	1042	13			
1	B	676	Total	C	N	O	S	0	8	0
			5362	3425	903	1021	13			
1	C	681	Total	C	N	O	S	0	15	0
			5471	3492	923	1043	13			
1	D	678	Total	C	N	O	S	0	16	0
			5453	3487	913	1040	13			

There are 56 discrepancies between the modelled and reference sequences:

Chain	Residue	Modelled	Actual	Comment	Reference
A	368	MET	-	EXPRESSION TAG	UNP O16025
A	369	HIS	-	EXPRESSION TAG	UNP O16025
A	370	HIS	-	EXPRESSION TAG	UNP O16025
A	371	HIS	-	EXPRESSION TAG	UNP O16025
A	372	HIS	-	EXPRESSION TAG	UNP O16025
A	373	HIS	-	EXPRESSION TAG	UNP O16025
A	?	-	TRP	DELETION	UNP O16025
A	?	-	PHE	DELETION	UNP O16025
A	?	-	HIS	DELETION	UNP O16025
A	413	GLY	ASN	ENGINEERED	UNP O16025
A	414	SER	ASP	ENGINEERED	UNP O16025
A	782	ILE	VAL	SEE REMARK 999	UNP O16025
A	805	ALA	ILE	ENGINEERED	UNP O16025
A	963	ILE	VAL	SEE REMARK 999	UNP O16025
B	368	MET	-	EXPRESSION TAG	UNP O16025
B	369	HIS	-	EXPRESSION TAG	UNP O16025
B	370	HIS	-	EXPRESSION TAG	UNP O16025
B	371	HIS	-	EXPRESSION TAG	UNP O16025
B	372	HIS	-	EXPRESSION TAG	UNP O16025
B	373	HIS	-	EXPRESSION TAG	UNP O16025
B	?	-	TRP	DELETION	UNP O16025

Continued on next page...

Continued from previous page...

Chain	Residue	Modelled	Actual	Comment	Reference
B	?	-	PHE	DELETION	UNP O16025
B	?	-	HIS	DELETION	UNP O16025
B	413	GLY	ASN	ENGINEERED	UNP O16025
B	414	SER	ASP	ENGINEERED	UNP O16025
B	782	ILE	VAL	SEE REMARK 999	UNP O16025
B	805	ALA	ILE	ENGINEERED	UNP O16025
B	963	ILE	VAL	SEE REMARK 999	UNP O16025
C	368	MET	-	EXPRESSION TAG	UNP O16025
C	369	HIS	-	EXPRESSION TAG	UNP O16025
C	370	HIS	-	EXPRESSION TAG	UNP O16025
C	371	HIS	-	EXPRESSION TAG	UNP O16025
C	372	HIS	-	EXPRESSION TAG	UNP O16025
C	373	HIS	-	EXPRESSION TAG	UNP O16025
C	?	-	TRP	DELETION	UNP O16025
C	?	-	PHE	DELETION	UNP O16025
C	?	-	HIS	DELETION	UNP O16025
C	413	GLY	ASN	ENGINEERED	UNP O16025
C	414	SER	ASP	ENGINEERED	UNP O16025
C	782	ILE	VAL	SEE REMARK 999	UNP O16025
C	805	ALA	ILE	ENGINEERED	UNP O16025
C	963	ILE	VAL	SEE REMARK 999	UNP O16025
D	368	MET	-	EXPRESSION TAG	UNP O16025
D	369	HIS	-	EXPRESSION TAG	UNP O16025
D	370	HIS	-	EXPRESSION TAG	UNP O16025
D	371	HIS	-	EXPRESSION TAG	UNP O16025
D	372	HIS	-	EXPRESSION TAG	UNP O16025
D	373	HIS	-	EXPRESSION TAG	UNP O16025
D	?	-	TRP	DELETION	UNP O16025
D	?	-	PHE	DELETION	UNP O16025
D	?	-	HIS	DELETION	UNP O16025
D	413	GLY	ASN	ENGINEERED	UNP O16025
D	414	SER	ASP	ENGINEERED	UNP O16025
D	782	ILE	VAL	SEE REMARK 999	UNP O16025
D	805	ALA	ILE	ENGINEERED	UNP O16025
D	963	ILE	VAL	SEE REMARK 999	UNP O16025

- Molecule 2 is FE (II) ION (three-letter code: FE2) (formula: Fe).

Mol	Chain	Residues	Atoms	ZeroOcc	AltConf
2	B	1	Total Fe 1 1	0	0
2	A	1	Total Fe 1 1	0	0

Continued on next page...

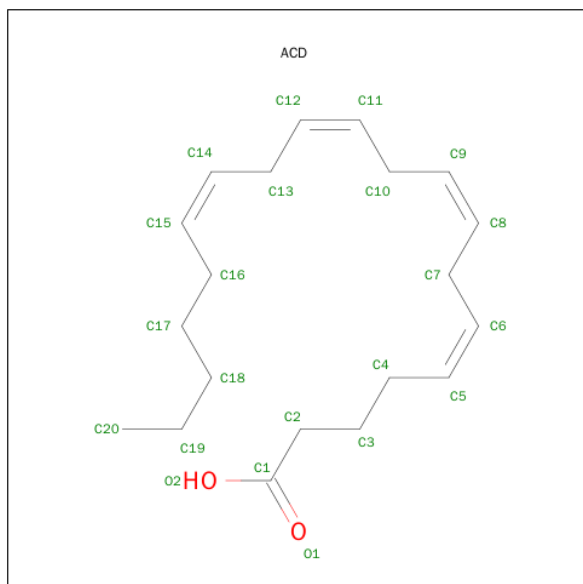
Continued from previous page...

Mol	Chain	Residues	Atoms		ZeroOcc	AltConf
2	D	1	Total 1	Fe 1	0	0
2	C	1	Total 1	Fe 1	0	0

- Molecule 3 is CALCIUM ION (three-letter code: CA) (formula: Ca).

Mol	Chain	Residues	Atoms		ZeroOcc	AltConf
3	B	1	Total 1	Ca 1	0	0
3	A	3	Total 3	Ca 3	0	0
3	D	1	Total 1	Ca 1	0	0
3	C	3	Total 3	Ca 3	0	0

- Molecule 4 is ARACHIDONIC ACID (three-letter code: ACD) (formula: C₂₀H₃₂O₂).



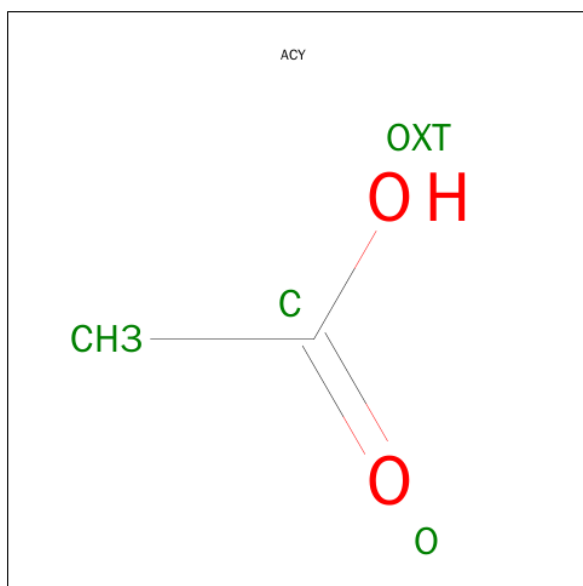
Mol	Chain	Residues	Atoms		ZeroOcc	AltConf
4	A	1	Total 9	C 9	0	0
4	B	1	Total 8	C 8	0	0
4	C	1	Total 9	C 9	0	0

Continued on next page...

Continued from previous page...

Mol	Chain	Residues	Atoms	ZeroOcc	AltConf
4	D	1	Total C 8 8	0	0

- Molecule 5 is ACETIC ACID (three-letter code: ACY) (formula: C₂H₄O₂).



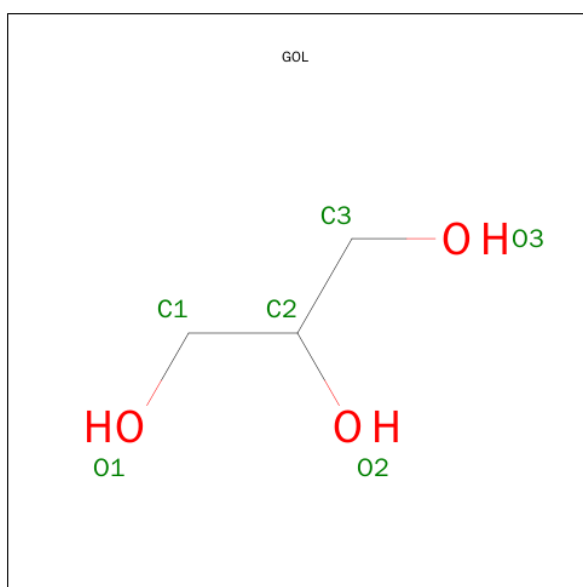
Mol	Chain	Residues	Atoms	ZeroOcc	AltConf
5	A	1	Total C O 8 4 4	0	1
5	A	1	Total C O 4 2 2	0	0
5	A	1	Total C O 4 2 2	0	0
5	A	1	Total C O 4 2 2	0	0
5	A	1	Total C O 4 2 2	0	0
5	A	1	Total C O 4 2 2	0	0
5	A	1	Total C O 4 2 2	0	0
5	B	1	Total C O 4 2 2	0	0
5	B	1	Total C O 4 2 2	0	0
5	B	1	Total C O 4 2 2	0	0

Continued on next page...

Continued from previous page...

Mol	Chain	Residues	Atoms			ZeroOcc	AltConf
5	B	1	Total	C	O	0	0
			4	2	2		
5	C	1	Total	C	O	0	0
			4	2	2		
5	C	1	Total	C	O	0	0
			4	2	2		
5	C	1	Total	C	O	0	0
			4	2	2		
5	C	1	Total	C	O	0	0
			4	2	2		
5	C	1	Total	C	O	0	0
			4	2	2		
5	D	1	Total	C	O	0	0
			4	2	2		
5	D	1	Total	C	O	0	0
			4	2	2		
5	D	1	Total	C	O	0	0
			4	2	2		
5	D	1	Total	C	O	0	0
			4	2	2		

- Molecule 6 is GLYCEROL (three-letter code: GOL) (formula: $C_3H_8O_3$).



Mol	Chain	Residues	Atoms	ZeroOcc	AltConf
6	A	1	Total C O 6 3 3	0	0
6	A	1	Total C O 6 3 3	0	0
6	A	1	Total C O 6 3 3	0	0
6	A	1	Total C O 6 3 3	0	0
6	A	1	Total C O 6 3 3	0	0
6	A	1	Total C O 6 3 3	0	0
6	A	1	Total C O 12 6 6	0	1
6	B	1	Total C O 6 3 3	0	0
6	B	1	Total C O 6 3 3	0	0
6	B	1	Total C O 6 3 3	0	0
6	C	1	Total C O 6 3 3	0	0
6	C	1	Total C O 6 3 3	0	0
6	C	1	Total C O 6 3 3	0	0
6	C	1	Total C O 6 3 3	0	0
6	C	1	Total C O 6 3 3	0	0
6	D	1	Total C O 6 3 3	0	0
6	D	1	Total C O 6 3 3	0	0
6	D	1	Total C O 6 3 3	0	0

- Molecule 7 is CHLORIDE ION (three-letter code: CL) (formula: Cl).

Mol	Chain	Residues	Atoms	ZeroOcc	AltConf
7	B	1	Total Cl 1 1	0	0

Continued on next page...

Continued from previous page...

Mol	Chain	Residues	Atoms		ZeroOcc	AltConf
7	A	1	Total 1	Cl 1	0	0
7	D	1	Total 1	Cl 1	0	0
7	C	1	Total 1	Cl 1	0	0

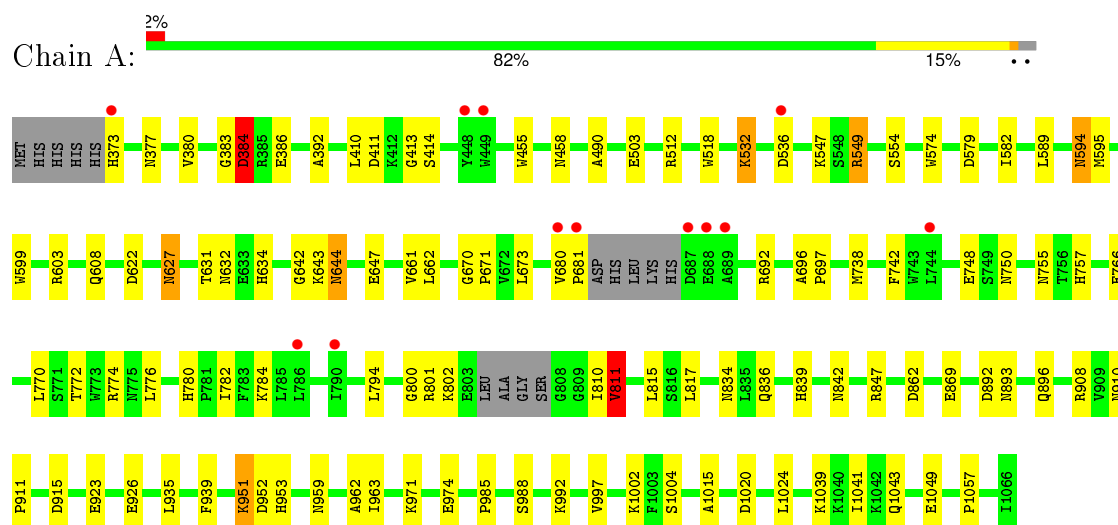
- Molecule 8 is water.

Mol	Chain	Residues	Atoms		ZeroOcc	AltConf
8	A	504	Total 504	O 504	0	0
8	B	311	Total 311	O 311	0	0
8	C	443	Total 443	O 443	0	0
8	D	324	Total 324	O 324	0	0

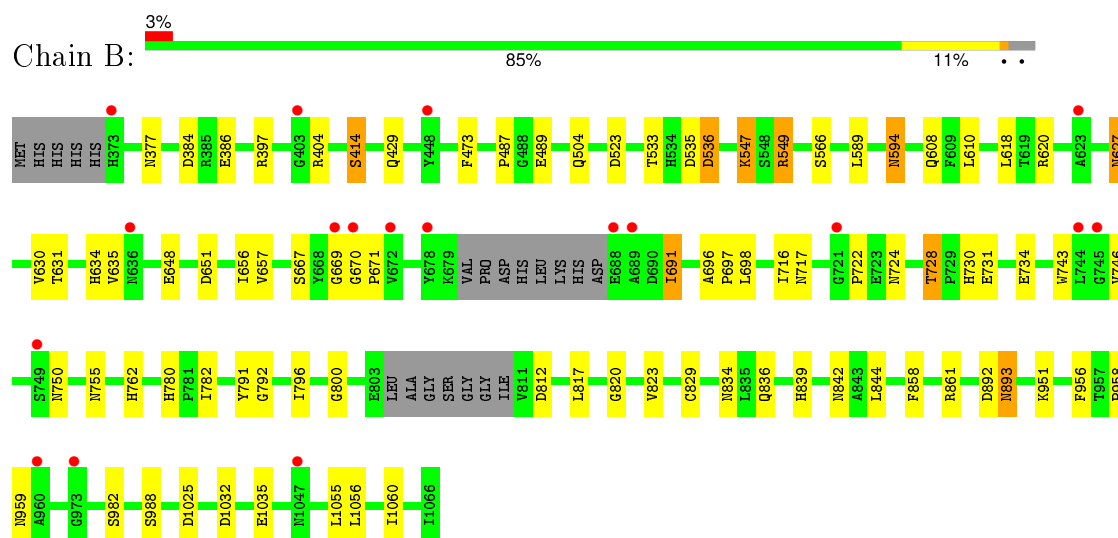
3 Residue-property plots [i](#)

These plots are drawn for all protein, RNA and DNA chains in the entry. The first graphic for a chain summarises the proportions of errors displayed in the second graphic. The second graphic shows the sequence view annotated by issues in geometry and electron density. Residues are color-coded according to the number of geometric quality criteria for which they contain at least one outlier: green = 0, yellow = 1, orange = 2 and red = 3 or more. A red dot above a residue indicates a poor fit to the electron density ($\text{RSRZ} > 2$). Stretches of 2 or more consecutive residues without any outlier are shown as a green connector. Residues present in the sample, but not in the model, are shown in grey.

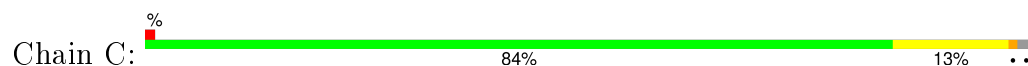
- Molecule 1: Allene oxide synthase-lipoxygenase protein

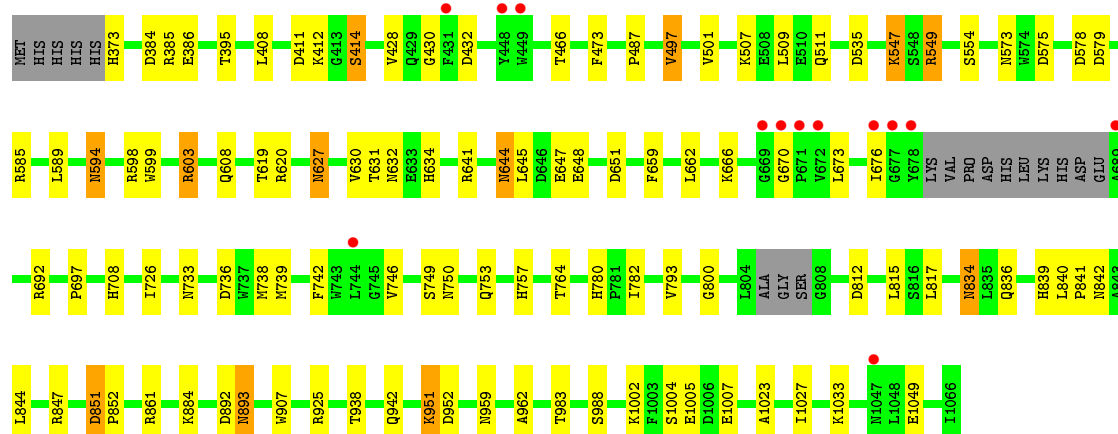


- Molecule 1: Allene oxide synthase-lipoxygenase protein



- Molecule 1: Allene oxide synthase-lipoxygenase protein





4 Data and refinement statistics

Property	Value	Source
Space group	P 1 21 1	Depositor
Cell constants a, b, c, α , β , γ	104.36Å 170.38Å 104.90Å 90.00° 95.51° 90.00°	Depositor
Resolution (Å)	30.03 – 2.31 30.03 – 2.31	Depositor EDS
% Data completeness (in resolution range)	99.2 (30.03-2.31) 99.2 (30.03-2.31)	Depositor EDS
R_{merge}	0.12	Depositor
R_{sym}	(Not available)	Depositor
$\langle I/\sigma(I) \rangle$ ¹	3.25 (at 2.31Å)	Xtriage
Refinement program	REFMAC 5.5.0088	Depositor
R, R_{free}	0.168 , 0.239 0.167 , 0.236	Depositor DCC
R_{free} test set	7906 reflections (5.26%)	DCC
Wilson B-factor (Å ²)	26.2	Xtriage
Anisotropy	0.243	Xtriage
Bulk solvent k_{sol} (e/Å ³), B_{sol} (Å ²)	0.33 , 48.0	EDS
Estimated twinning fraction	0.068 for l,-k,h	Xtriage
L-test for twinning ²	$\langle L \rangle = 0.50$, $\langle L^2 \rangle = 0.34$	Xtriage
Outliers	1 of 158115 reflections (0.001%)	Xtriage
F_o, F_c correlation	0.96	EDS
Total number of atoms	23613	wwPDB-VP
Average B, all atoms (Å ²)	27.0	wwPDB-VP

Xtriage's analysis on translational NCS is as follows: *The largest off-origin peak in the Patterson function is 5.00% of the height of the origin peak. No significant pseudotranslation is detected.*

¹Intensities estimated from amplitudes.

²Theoretical values of $\langle |L| \rangle$, $\langle L^2 \rangle$ for acentric reflections are 0.5, 0.375 respectively for untwinned datasets, and 0.333, 0.2 for perfectly twinned datasets.

5 Model quality [i](#)

5.1 Standard geometry [i](#)

Bond lengths and bond angles in the following residue types are not validated in this section: GOL, ACD, CA, CL, FE2, ACY

The Z score for a bond length (or angle) is the number of standard deviations the observed value is removed from the expected value. A bond length (or angle) with $|Z| > 5$ is considered an outlier worth inspection. RMSZ is the root-mean-square of all Z scores of the bond lengths (or angles).

Mol	Chain	Bond lengths		Bond angles	
		RMSZ	# Z >5	RMSZ	# Z >5
1	A	1.00	0/5668	0.88	12/7709 (0.2%)
1	B	0.83	2/5533 (0.0%)	0.81	8/7542 (0.1%)
1	C	0.92	1/5661 (0.0%)	0.84	3/7706 (0.0%)
1	D	0.85	1/5638 (0.0%)	0.84	7/7673 (0.1%)
All	All	0.90	4/22500 (0.0%)	0.85	30/30630 (0.1%)

Chiral center outliers are detected by calculating the chiral volume of a chiral center and verifying if the center is modelled as a planar moiety or with the opposite hand. A planarity outlier is detected by checking planarity of atoms in a peptide group, atoms in a mainchain group or atoms of a sidechain that are expected to be planar.

Mol	Chain	#Chirality outliers	#Planarity outliers
1	A	0	1
1	B	0	1
1	C	0	2
1	D	0	1
All	All	0	5

All (4) bond length outliers are listed below:

Mol	Chain	Res	Type	Atoms	Z	Observed(Å)	Ideal(Å)
1	D	414	SER	C-N	12.23	1.62	1.34
1	B	414	SER	C-N	11.26	1.59	1.34
1	C	414	SER	C-N	10.16	1.57	1.34
1	B	791	TYR	CD1-CE1	5.29	1.47	1.39

The worst 5 of 30 bond angle outliers are listed below:

Mol	Chain	Res	Type	Atoms	Z	Observed(°)	Ideal(°)
1	A	549	ARG	NE-CZ-NH2	-9.08	115.76	120.30

Continued on next page...

Continued from previous page...

Mol	Chain	Res	Type	Atoms	Z	Observed(°)	Ideal(°)
1	D	549	ARG	NE-CZ-NH2	-8.89	115.86	120.30
1	B	549	ARG	NE-CZ-NH2	-8.72	115.94	120.30
1	B	523	ASP	CB-CG-OD1	7.39	124.95	118.30
1	B	414	SER	O-C-N	-6.90	111.67	122.70

There are no chirality outliers.

All (5) planarity outliers are listed below:

Mol	Chain	Res	Type	Group
1	A	410	LEU	Peptide
1	B	414	SER	Mainchain
1	C	414	SER	Mainchain
1	C	589	LEU	Peptide
1	D	414	SER	Mainchain

5.2 Too-close contacts

In the following table, the Non-H and H(model) columns list the number of non-hydrogen atoms and hydrogen atoms in the chain respectively. The H(added) column lists the number of hydrogen atoms added and optimized by MolProbity. The Clashes column lists the number of clashes within the asymmetric unit, whereas Symm-Clashes lists symmetry related clashes.

Mol	Chain	Non-H	H(model)	H(added)	Clashes	Symm-Clashes
1	A	5487	0	5213	107	0
1	B	5362	0	4994	58	0
1	C	5471	0	5155	86	0
1	D	5453	0	5138	87	0
2	A	1	0	0	0	0
2	B	1	0	0	0	0
2	C	1	0	0	0	0
2	D	1	0	0	0	0
3	A	3	0	0	0	0
3	B	1	0	0	0	0
3	C	3	0	0	0	0
3	D	1	0	0	0	0
4	A	9	0	15	1	0
4	B	8	0	13	1	0
4	C	9	0	15	5	0
4	D	8	0	13	1	0
5	A	32	0	24	6	0
5	B	16	0	12	0	0

Continued on next page...

Continued from previous page...

Mol	Chain	Non-H	H(model)	H(added)	Clashes	Symm-Clashes
5	C	24	0	18	3	0
5	D	16	0	12	7	0
6	A	54	0	72	20	0
6	B	18	0	24	2	0
6	C	30	0	40	3	0
6	D	18	0	24	5	0
7	A	1	0	0	0	0
7	B	1	0	0	0	0
7	C	1	0	0	0	0
7	D	1	0	0	0	0
8	A	504	0	0	12	0
8	B	311	0	0	3	0
8	C	443	0	0	9	0
8	D	324	0	0	6	0
All	All	23613	0	20782	339	0

The all-atom clashscore is defined as the number of clashes found per 1000 atoms (including hydrogen atoms). The all-atom clashscore for this structure is 8.

The worst 5 of 339 close contacts within the same asymmetric unit are listed below, sorted by their clash magnitude.

Atom-1	Atom-2	Interatomic distance (Å)	Clash overlap (Å)
1:C:758:LEU:HD11	4:C:2001:ACD:H161	1.44	0.99
1:B:893[A]:ASN:H	1:B:893[A]:ASN:ND2	1.51	0.98
1:D:608:GLN:HB2	5:D:2203:ACY:H3	1.46	0.98
1:A:532:LYS:HG2	1:A:536:ASP:OD2	1.64	0.97
6:A:1068[A]:GOL:H12	1:B:1032:ASP:OD1	1.64	0.96

There are no symmetry-related clashes.

5.3 Torsion angles [i](#)

5.3.1 Protein backbone [i](#)

In the following table, the Percentiles column shows the percent Ramachandran outliers of the chain as a percentile score with respect to all X-ray entries followed by that with respect to entries of similar resolution.

The Analysed column shows the number of residues for which the backbone conformation was analysed, and the total number of residues.

Mol	Chain	Analysed	Favoured	Allowed	Outliers	Percentiles	
1	A	688/696 (99%)	660 (96%)	27 (4%)	1 (0%)	56	68
1	B	678/696 (97%)	651 (96%)	24 (4%)	3 (0%)	39	48
1	C	690/696 (99%)	660 (96%)	27 (4%)	3 (0%)	39	48
1	D	688/696 (99%)	662 (96%)	25 (4%)	1 (0%)	56	68
All	All	2744/2784 (99%)	2633 (96%)	103 (4%)	8 (0%)	46	56

5 of 8 Ramachandran outliers are listed below:

Mol	Chain	Res	Type
1	A	811	VAL
1	B	812	ASP
1	C	810	ILE
1	D	412	LYS
1	B	762	HIS

5.3.2 Protein sidechains ⓘ

In the following table, the Percentiles column shows the percent sidechain outliers of the chain as a percentile score with respect to all X-ray entries followed by that with respect to entries of similar resolution.

The Analysed column shows the number of residues for which the sidechain conformation was analysed, and the total number of residues.

Mol	Chain	Analysed	Rotameric	Outliers	Percentiles	
1	A	579/601 (96%)	564 (97%)	15 (3%)	54	71
1	B	552/601 (92%)	533 (97%)	19 (3%)	44	59
1	C	574/601 (96%)	561 (98%)	13 (2%)	58	75
1	D	568/601 (94%)	549 (97%)	19 (3%)	45	61
All	All	2273/2404 (95%)	2207 (97%)	66 (3%)	52	66

5 of 66 residues with a non-rotameric sidechain are listed below:

Mol	Chain	Res	Type
1	B	734	GLU
1	C	514	LEU
1	D	793	VAL
1	B	893[A]	ASN
1	B	988	SER

Some sidechains can be flipped to improve hydrogen bonding and reduce clashes. 5 of 73 such sidechains are listed below:

Mol	Chain	Res	Type
1	C	458	ASN
1	C	636	ASN
1	D	839	HIS
1	C	614	ASN
1	C	730	HIS

5.3.3 RNA [i](#)

There are no RNA molecules in this entry.

5.4 Non-standard residues in protein, DNA, RNA chains [i](#)

There are no non-standard protein/DNA/RNA residues in this entry.

5.5 Carbohydrates [i](#)

There are no carbohydrates in this entry.

5.6 Ligand geometry [i](#)

Of 62 ligands modelled in this entry, 16 are monoatomic - leaving 46 for Mogul analysis.

In the following table, the Counts columns list the number of bonds (or angles) for which Mogul statistics could be retrieved, the number of bonds (or angles) that are observed in the model and the number of bonds (or angles) that are defined in the chemical component dictionary. The Link column lists molecule types, if any, to which the group is linked. The Z score for a bond length (or angle) is the number of standard deviations the observed value is removed from the expected value. A bond length (or angle) with $|Z| > 2$ is considered an outlier worth inspection. RMSZ is the root-mean-square of all Z scores of the bond lengths (or angles).

Mol	Type	Chain	Res	Link	Bond lengths			Bond angles		
					Counts	RMSZ	$\# Z > 2$	Counts	RMSZ	$\# Z > 2$
6	GOL	A	1068[A]	-	5,5,5	0.30	0	5,5,5	1.09	0
6	GOL	A	1068[B]	-	5,5,5	0.51	0	5,5,5	0.65	0
4	ACD	A	2001	-	8,8,21	0.51	0	7,7,21	1.22	0
5	ACY	A	2201[A]	-	1,3,3	1.81	0	0,3,3	0.00	-
5	ACY	A	2201[B]	-	1,3,3	0.70	0	0,3,3	0.00	-
5	ACY	A	2202	-	1,3,3	1.75	0	0,3,3	0.00	-
5	ACY	A	2203	-	1,3,3	0.06	0	0,3,3	0.00	-

Mol	Type	Chain	Res	Link	Bond lengths			Bond angles		
					Counts	RMSZ	# Z > 2	Counts	RMSZ	# Z > 2
5	ACY	A	2204	-	1,3,3	1.52	0	0,3,3	0.00	-
5	ACY	A	2205	-	1,3,3	2.63	1 (100%)	0,3,3	0.00	-
5	ACY	A	2206	-	1,3,3	1.92	0	0,3,3	0.00	-
5	ACY	A	2207	-	1,3,3	2.55	1 (100%)	0,3,3	0.00	-
6	GOL	A	2301	-	5,5,5	0.32	0	5,5,5	0.33	0
6	GOL	A	2302	-	5,5,5	0.34	0	5,5,5	0.64	0
6	GOL	A	2303	-	5,5,5	0.58	0	5,5,5	1.27	1 (20%)
6	GOL	A	2304	-	5,5,5	0.41	0	5,5,5	1.00	0
6	GOL	A	2305	-	5,5,5	0.43	0	5,5,5	1.20	0
6	GOL	A	2306	-	5,5,5	0.52	0	5,5,5	0.96	0
6	GOL	A	2307	-	5,5,5	0.59	0	5,5,5	0.74	0
4	ACD	B	2001	-	7,7,21	0.59	0	6,6,21	0.78	0
5	ACY	B	2201	-	1,3,3	0.02	0	0,3,3	0.00	-
5	ACY	B	2202	-	1,3,3	2.07	1 (100%)	0,3,3	0.00	-
5	ACY	B	2203	-	1,3,3	1.00	0	0,3,3	0.00	-
5	ACY	B	2204	-	1,3,3	0.53	0	0,3,3	0.00	-
6	GOL	B	2301	-	5,5,5	0.48	0	5,5,5	0.54	0
6	GOL	B	2303	-	5,5,5	0.28	0	5,5,5	0.33	0
6	GOL	B	2304	-	5,5,5	0.42	0	5,5,5	0.65	0
4	ACD	C	2001	-	8,8,21	0.35	0	7,7,21	0.80	0
5	ACY	C	2201	-	1,3,3	2.41	1 (100%)	0,3,3	0.00	-
5	ACY	C	2202	-	1,3,3	2.22	1 (100%)	0,3,3	0.00	-
5	ACY	C	2203	-	1,3,3	0.39	0	0,3,3	0.00	-
5	ACY	C	2204	-	1,3,3	2.07	1 (100%)	0,3,3	0.00	-
5	ACY	C	2205	-	1,3,3	1.91	0	0,3,3	0.00	-
5	ACY	C	2206	-	1,3,3	2.34	1 (100%)	0,3,3	0.00	-
6	GOL	C	2301	-	5,5,5	0.59	0	5,5,5	0.83	0
6	GOL	C	2302	-	5,5,5	0.56	0	5,5,5	0.76	0
6	GOL	C	2304	-	5,5,5	0.39	0	5,5,5	1.02	0
6	GOL	C	2305	-	5,5,5	0.20	0	5,5,5	0.81	0
6	GOL	C	2306	-	5,5,5	0.31	0	5,5,5	0.75	0
6	GOL	D	1067	-	5,5,5	0.53	0	5,5,5	0.47	0
4	ACD	D	2001	-	7,7,21	0.49	0	6,6,21	0.64	0
5	ACY	D	2201	-	1,3,3	1.34	0	0,3,3	0.00	-
5	ACY	D	2202	-	1,3,3	1.32	0	0,3,3	0.00	-
5	ACY	D	2203	-	1,3,3	1.27	0	0,3,3	0.00	-
5	ACY	D	2204	-	1,3,3	1.81	0	0,3,3	0.00	-
6	GOL	D	2303	-	5,5,5	0.50	0	5,5,5	0.53	0
6	GOL	D	2304	-	5,5,5	0.47	0	5,5,5	0.80	0

In the following table, the Chirals column lists the number of chiral outliers, the number of chiral

centers analysed, the number of these observed in the model and the number defined in the chemical component dictionary. Similar counts are reported in the Torsion and Rings columns. '-' means no outliers of that kind were identified.

Mol	Type	Chain	Res	Link	Chirals	Torsions	Rings
6	GOL	A	1068[A]	-	-	0/4/4/4	0/0/0/0
6	GOL	A	1068[B]	-	-	0/4/4/4	0/0/0/0
4	ACD	A	2001	-	-	0/6/6/19	0/0/0/0
5	ACY	A	2201[A]	-	-	0/0/0/0	0/0/0/0
5	ACY	A	2201[B]	-	-	0/0/0/0	0/0/0/0
5	ACY	A	2202	-	-	0/0/0/0	0/0/0/0
5	ACY	A	2203	-	-	0/0/0/0	0/0/0/0
5	ACY	A	2204	-	-	0/0/0/0	0/0/0/0
5	ACY	A	2205	-	-	0/0/0/0	0/0/0/0
5	ACY	A	2206	-	-	0/0/0/0	0/0/0/0
5	ACY	A	2207	-	-	0/0/0/0	0/0/0/0
6	GOL	A	2301	-	-	0/4/4/4	0/0/0/0
6	GOL	A	2302	-	-	0/4/4/4	0/0/0/0
6	GOL	A	2303	-	-	0/4/4/4	0/0/0/0
6	GOL	A	2304	-	-	0/4/4/4	0/0/0/0
6	GOL	A	2305	-	-	0/4/4/4	0/0/0/0
6	GOL	A	2306	-	-	0/4/4/4	0/0/0/0
6	GOL	A	2307	-	-	0/4/4/4	0/0/0/0
4	ACD	B	2001	-	-	0/5/5/19	0/0/0/0
5	ACY	B	2201	-	-	0/0/0/0	0/0/0/0
5	ACY	B	2202	-	-	0/0/0/0	0/0/0/0
5	ACY	B	2203	-	-	0/0/0/0	0/0/0/0
5	ACY	B	2204	-	-	0/0/0/0	0/0/0/0
6	GOL	B	2301	-	-	0/4/4/4	0/0/0/0
6	GOL	B	2303	-	-	0/4/4/4	0/0/0/0
6	GOL	B	2304	-	-	0/4/4/4	0/0/0/0
4	ACD	C	2001	-	-	0/6/6/19	0/0/0/0
5	ACY	C	2201	-	-	0/0/0/0	0/0/0/0
5	ACY	C	2202	-	-	0/0/0/0	0/0/0/0
5	ACY	C	2203	-	-	0/0/0/0	0/0/0/0
5	ACY	C	2204	-	-	0/0/0/0	0/0/0/0
5	ACY	C	2205	-	-	0/0/0/0	0/0/0/0
5	ACY	C	2206	-	-	0/0/0/0	0/0/0/0
6	GOL	C	2301	-	-	0/4/4/4	0/0/0/0
6	GOL	C	2302	-	-	0/4/4/4	0/0/0/0
6	GOL	C	2304	-	-	0/4/4/4	0/0/0/0
6	GOL	C	2305	-	-	0/4/4/4	0/0/0/0
6	GOL	C	2306	-	-	0/4/4/4	0/0/0/0
6	GOL	D	1067	-	-	0/4/4/4	0/0/0/0
4	ACD	D	2001	-	-	0/5/5/19	0/0/0/0

Continued on next page...

Continued from previous page...

Mol	Type	Chain	Res	Link	Chirals	Torsions	Rings
5	ACY	D	2201	-	-	0/0/0/0	0/0/0/0
5	ACY	D	2202	-	-	0/0/0/0	0/0/0/0
5	ACY	D	2203	-	-	0/0/0/0	0/0/0/0
5	ACY	D	2204	-	-	0/0/0/0	0/0/0/0
6	GOL	D	2303	-	-	0/4/4/4	0/0/0/0
6	GOL	D	2304	-	-	0/4/4/4	0/0/0/0

The worst 5 of 7 bond length outliers are listed below:

Mol	Chain	Res	Type	Atoms	Z	Observed(Å)	Ideal(Å)
5	C	2201	ACY	CH3-C	-2.41	1.45	1.48
5	C	2204	ACY	CH3-C	2.07	1.51	1.48
5	B	2202	ACY	CH3-C	2.07	1.51	1.48
5	C	2202	ACY	CH3-C	2.22	1.51	1.48
5	C	2206	ACY	CH3-C	2.34	1.52	1.48

All (1) bond angle outliers are listed below:

Mol	Chain	Res	Type	Atoms	Z	Observed(°)	Ideal(°)
6	A	2303	GOL	O2-C2-C1	2.27	119.04	108.65

There are no chirality outliers.

There are no torsion outliers.

There are no ring outliers.

21 monomers are involved in 54 short contacts:

Mol	Chain	Res	Type	Clashes	Symm-Clashes
6	A	1068[A]	GOL	6	0
6	A	1068[B]	GOL	2	0
4	A	2001	ACD	1	0
5	A	2201[A]	ACY	1	0
5	A	2201[B]	ACY	4	0
5	A	2203	ACY	1	0
6	A	2301	GOL	1	0
6	A	2303	GOL	5	0
6	A	2305	GOL	5	0
6	A	2306	GOL	1	0
4	B	2001	ACD	1	0
6	B	2304	GOL	2	0
4	C	2001	ACD	5	0

Continued on next page...

Continued from previous page...

Mol	Chain	Res	Type	Clashes	Symm-Clashes
5	C	2203	ACY	3	0
6	C	2301	GOL	3	0
4	D	2001	ACD	1	0
5	D	2202	ACY	4	0
5	D	2203	ACY	2	0
5	D	2204	ACY	1	0
6	D	2303	GOL	2	0
6	D	2304	GOL	3	0

5.7 Other polymers [i](#)

There are no such residues in this entry.

5.8 Polymer linkage issues [i](#)

There are no chain breaks in this entry.

6 Fit of model and data [i](#)

6.1 Protein, DNA and RNA chains [i](#)

In the following table, the column labelled ‘#RSRZ> 2’ contains the number (and percentage) of RSRZ outliers, followed by percent RSRZ outliers for the chain as percentile scores relative to all X-ray entries and entries of similar resolution. The OWAB column contains the minimum, median, 95th percentile and maximum values of the occupancy-weighted average B-factor per residue. The column labelled ‘Q< 0.9’ lists the number of (and percentage) of residues with an average occupancy less than 0.9.

Mol	Chain	Analysed	<RSRZ>	#RSRZ>2	OWAB(Å ²)	Q<0.9
1	A	682/696 (97%)	-0.42	12 (1%) 71 78	13, 21, 36, 72	1 (0%)
1	B	676/696 (97%)	-0.26	18 (2%) 58 67	16, 30, 58, 81	2 (0%)
1	C	681/696 (97%)	-0.45	9 (1%) 79 84	13, 23, 40, 95	2 (0%)
1	D	678/696 (97%)	-0.28	13 (1%) 70 77	14, 28, 51, 92	0
All	All	2717/2784 (97%)	-0.35	52 (1%) 70 77	13, 25, 50, 95	5 (0%)

The worst 5 of 52 RSRZ outliers are listed below:

Mol	Chain	Res	Type	RSRZ
1	A	681	PRO	5.2
1	A	687	ASP	4.6
1	A	680	VAL	4.5
1	D	670	GLY	3.6
1	B	678	TYR	3.4

6.2 Non-standard residues in protein, DNA, RNA chains [i](#)

There are no non-standard protein/DNA/RNA residues in this entry.

6.3 Carbohydrates [i](#)

There are no carbohydrates in this entry.

6.4 Ligands [i](#)

In the following table, the Atoms column lists the number of modelled atoms in the group and the number defined in the chemical component dictionary. LLDF column lists the quality of electron density of the group with respect to its neighbouring residues in protein, DNA or RNA chains. The B-factors column lists the minimum, median, 95th percentile and maximum values of B factors

of atoms in the group. The column labelled 'Q< 0.9' lists the number of atoms with occupancy less than 0.9.

Mol	Type	Chain	Res	Atoms	RSCC	RSR	LLDF	B-factors(Å ²)	Q<0.9
5	ACY	C	2206	4/4	0.92	0.18	8.42	44,45,53,55	0
4	ACD	A	2001	9/22	0.80	0.28	8.03	31,43,51,53	0
4	ACD	C	2001	9/22	0.87	0.26	7.55	38,45,49,54	0
5	ACY	B	2203	4/4	0.90	0.18	5.01	36,40,44,48	0
5	ACY	A	2206	4/4	0.90	0.16	4.91	33,35,36,52	0
6	GOL	A	1068[B]	6/6	0.92	0.21	4.65	20,27,33,33	6
5	ACY	C	2201	4/4	0.98	0.32	4.38	23,26,26,30	0
6	GOL	A	1068[A]	6/6	0.92	0.21	3.92	7,13,20,21	6
5	ACY	A	2201[A]	4/4	0.99	0.25	3.73	7,7,8,10	4
5	ACY	D	2203	4/4	0.98	0.32	3.39	26,33,33,36	0
6	GOL	C	2304	6/6	0.93	0.17	3.22	22,36,53,62	0
6	GOL	C	2301	6/6	0.90	0.20	2.91	32,40,55,56	0
6	GOL	A	2305	6/6	0.89	0.16	2.54	30,38,46,51	0
4	ACD	D	2001	8/22	0.90	0.22	2.53	28,38,46,53	0
4	ACD	B	2001	8/22	0.85	0.20	2.50	38,41,54,57	0
5	ACY	B	2201	4/4	0.95	0.31	2.37	28,32,36,38	0
5	ACY	A	2204	4/4	0.90	0.13	2.10	34,43,46,53	0
5	ACY	A	2201[B]	4/4	0.99	0.25	2.04	6,9,11,14	4
5	ACY	C	2202	4/4	0.94	0.12	2.00	38,38,44,46	0
6	GOL	A	2303	6/6	0.89	0.14	1.99	27,30,41,44	0
5	ACY	D	2204	4/4	0.95	0.13	1.68	38,39,46,51	0
6	GOL	A	2306	6/6	0.92	0.14	1.63	40,44,50,50	0
5	ACY	D	2202	4/4	0.92	0.16	1.47	50,50,53,67	0
6	GOL	B	2301	6/6	0.98	0.14	1.43	32,35,35,44	0
6	GOL	A	2307	6/6	0.78	0.15	1.37	44,57,62,63	0
6	GOL	B	2304	6/6	0.90	0.14	1.32	35,46,54,59	0
5	ACY	C	2203	4/4	0.91	0.16	1.31	35,39,40,45	0
6	GOL	C	2305	6/6	0.85	0.14	1.08	45,51,56,60	0
5	ACY	A	2203	4/4	0.94	0.16	1.02	29,32,48,52	0
6	GOL	A	2301	6/6	0.96	0.16	0.98	26,31,39,40	0
5	ACY	C	2204	4/4	0.95	0.12	0.91	34,44,45,46	0
5	ACY	A	2207	4/4	0.95	0.09	0.84	44,48,51,67	0
6	GOL	D	2303	6/6	0.90	0.12	0.81	39,42,45,63	0
6	GOL	C	2306	6/6	0.84	0.14	0.71	26,46,51,58	0
5	ACY	A	2202	4/4	0.97	0.14	0.58	39,44,44,46	0
5	ACY	D	2201	4/4	0.95	0.14	0.42	37,43,44,52	0
6	GOL	D	1067	6/6	0.98	0.11	0.27	30,32,35,35	0
6	GOL	C	2302	6/6	0.99	0.09	-0.16	26,30,33,33	0
7	CL	A	2401	1/1	0.99	0.09	-0.21	28,28,28,28	0
6	GOL	A	2302	6/6	0.96	0.10	-0.46	23,28,33,38	0

Continued on next page...

Continued from previous page...

Mol	Type	Chain	Res	Atoms	RSCC	RSR	LLDF	B-factors(\AA^2)	Q<0.9
6	GOL	A	2304	6/6	0.91	0.12	-0.55	25,38,48,49	0
5	ACY	C	2205	4/4	0.95	0.09	-0.56	42,42,50,56	0
6	GOL	D	2304	6/6	0.86	0.10	-0.68	32,45,50,55	0
7	CL	D	2401	1/1	0.99	0.07	-1.04	26,26,26,26	0
7	CL	B	2401	1/1	0.98	0.07	-1.06	29,29,29,29	0
7	CL	C	2401	1/1	0.99	0.06	-1.40	23,23,23,23	0
5	ACY	B	2204	4/4	0.94	0.08	-1.61	39,41,51,56	0
6	GOL	B	2303	6/6	0.90	0.09	-1.72	44,51,55,94	0
2	FE2	B	1500	1/1	0.98	0.06	-1.97	29,29,29,29	0
2	FE2	D	1500	1/1	0.99	0.06	-2.17	25,25,25,25	0
3	CA	A	1501	1/1	1.00	0.04	-2.36	22,22,22,22	0
2	FE2	A	1500	1/1	0.99	0.05	-2.61	20,20,20,20	0
3	CA	D	1501	1/1	1.00	0.03	-2.65	25,25,25,25	0
3	CA	B	1501	1/1	0.99	0.03	-3.17	23,23,23,23	0
3	CA	A	1067	1/1	0.99	0.04	-3.18	18,18,18,18	0
3	CA	C	1501	1/1	0.99	0.03	-3.24	25,25,25,25	0
3	CA	A	1502	1/1	0.99	0.05	-3.25	21,21,21,21	0
3	CA	C	1067	1/1	1.00	0.05	-3.31	20,20,20,20	0
3	CA	C	1502	1/1	0.99	0.04	-3.80	19,19,19,19	0
2	FE2	C	1500	1/1	0.99	0.05	-5.41	19,19,19,19	0
5	ACY	B	2202	4/4	0.89	0.21	-	46,50,54,62	0
5	ACY	A	2205	4/4	0.89	0.18	-	39,40,46,47	0

6.5 Other polymers

There are no such residues in this entry.