



Full wwPDB X-ray Structure Validation Report ⓘ

May 12, 2016 – 01:29 PM EDT

PDB ID : 5FMV
Title : Crystal structure of human CD45 extracellular region, domains d1-d4
Authors : Chang, V.T.; Fernandes, R.A.; Ganzinger, K.A.; Lee, S.F.; Siebold, C.; McColl, J.; Jonsson, P.; Palayret, M.; Harlos, K.; Coles, C.H.; Jones, E.Y.; Lui, Y.; Huang, E.; Gilbert, R.J.C.; Klenerman, D.; Aricescu, A.R.; Davis, S.J.
Deposited on : 2015-11-09
Resolution : 2.90 Å(reported)

This is a Full wwPDB X-ray Structure Validation Report for a publicly released PDB entry.
We welcome your comments at validation@mail.wwpdb.org
A user guide is available at
<http://wwpdb.org/validation/2016/XrayValidationReportHelp>
with specific help available everywhere you see the ⓘ symbol.

The following versions of software and data (see [references ⓘ](#)) were used in the production of this report:

MolProbity : 4.02b-467
Mogul : 1.7.1 (RC1), CSD as537be (2016)
Xtriage (Phenix) : 1.9-1692
EDS : rb-20027457
Percentile statistics : 20151230.v01 (using entries in the PDB archive December 30th 2015)
Refmac : 5.8.0135
CCP4 : 6.5.0
Ideal geometry (proteins) : Engh & Huber (2001)
Ideal geometry (DNA, RNA) : Parkinson et al. (1996)
Validation Pipeline (wwPDB-VP) : rb-20027457

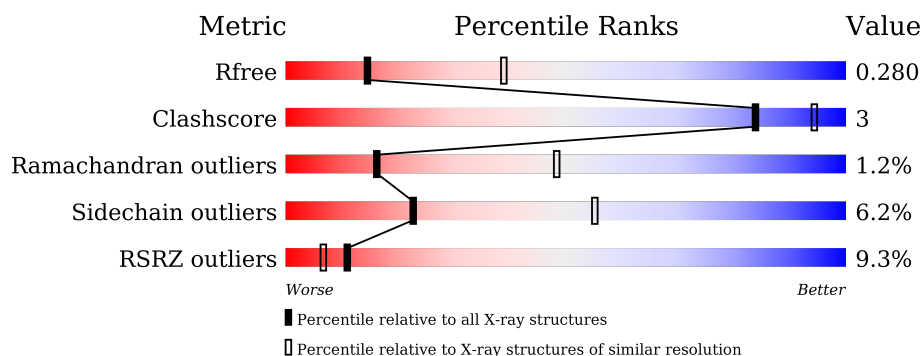
1 Overall quality at a glance

The following experimental techniques were used to determine the structure:

X-RAY DIFFRACTION

The reported resolution of this entry is 2.90 Å.

Percentile scores (ranging between 0-100) for global validation metrics of the entry are shown in the following graphic. The table shows the number of entries on which the scores are based.



Metric	Whole archive (#Entries)	Similar resolution (#Entries, resolution range(Å))
R_{free}	91344	1451 (2.90-2.90)
Clashscore	102246	1668 (2.90-2.90)
Ramachandran outliers	100387	1630 (2.90-2.90)
Sidechain outliers	100360	1632 (2.90-2.90)
RSRZ outliers	91569	1456 (2.90-2.90)

The table below summarises the geometric issues observed across the polymeric chains and their fit to the electron density. The red, orange, yellow and green segments on the lower bar indicate the fraction of residues that contain outliers for ≥ 3 , 2, 1 and 0 types of geometric quality criteria. A grey segment represents the fraction of residues that are not modelled. The numeric value for each fraction is indicated below the corresponding segment, with a dot representing fractions $\leq 5\%$. The upper red bar (where present) indicates the fraction of residues that have poor fit to the electron density. The numeric value is given above the bar.

Mol	Chain	Length	Quality of chain
1	A	361	<div> <div>15%</div> <div>82%</div> <div>14%</div> <div>..</div> </div>
1	B	361	<div> <div>3%</div> <div>83%</div> <div>12%</div> <div>..</div> </div>

2 Entry composition

There are 3 unique types of molecules in this entry. The entry contains 5811 atoms, of which 0 are hydrogens and 0 are deuteriums.

In the tables below, the ZeroOcc column contains the number of atoms modelled with zero occupancy, the AltConf column contains the number of residues with at least one atom in alternate conformation and the Trace column contains the number of residues modelled with at most 2 atoms.

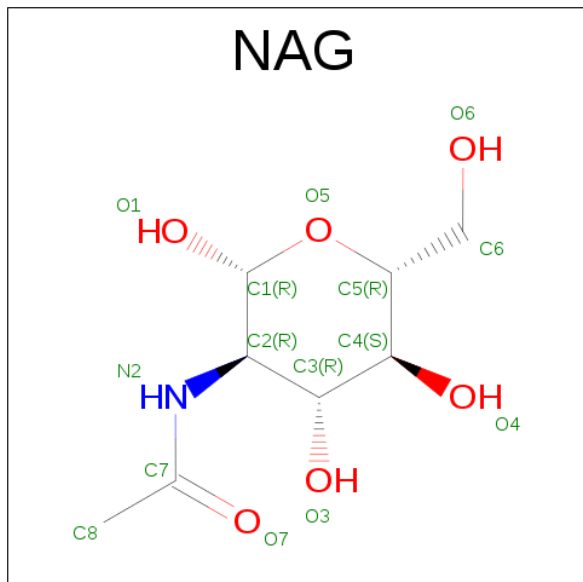
- Molecule 1 is a protein called RECEPTOR-TYPE TYROSINE-PROTEIN PHOSPHATASE C.

Mol	Chain	Residues	Atoms					ZeroOcc	AltConf	Trace
1	A	351	Total	C	N	O	S	0	0	0
			2831	1773	489	548	21			
1	B	347	Total	C	N	O	S	0	0	0
			2801	1754	484	542	21			

There are 24 discrepancies between the modelled and reference sequences:

Chain	Residue	Modelled	Actual	Comment	Reference
A	220	GLU	-	EXPRESSION TAG	UNP P08575
A	221	THR	-	EXPRESSION TAG	UNP P08575
A	222	GLY	-	EXPRESSION TAG	UNP P08575
A	572	GLY	-	EXPRESSION TAG	UNP P08575
A	573	THR	-	EXPRESSION TAG	UNP P08575
A	574	LYS	-	EXPRESSION TAG	UNP P08575
A	575	HIS	-	EXPRESSION TAG	UNP P08575
A	576	HIS	-	EXPRESSION TAG	UNP P08575
A	577	HIS	-	EXPRESSION TAG	UNP P08575
A	578	HIS	-	EXPRESSION TAG	UNP P08575
A	579	HIS	-	EXPRESSION TAG	UNP P08575
A	580	HIS	-	EXPRESSION TAG	UNP P08575
B	220	GLU	-	EXPRESSION TAG	UNP P08575
B	221	THR	-	EXPRESSION TAG	UNP P08575
B	222	GLY	-	EXPRESSION TAG	UNP P08575
B	572	GLY	-	EXPRESSION TAG	UNP P08575
B	573	THR	-	EXPRESSION TAG	UNP P08575
B	574	LYS	-	EXPRESSION TAG	UNP P08575
B	575	HIS	-	EXPRESSION TAG	UNP P08575
B	576	HIS	-	EXPRESSION TAG	UNP P08575
B	577	HIS	-	EXPRESSION TAG	UNP P08575
B	578	HIS	-	EXPRESSION TAG	UNP P08575
B	579	HIS	-	EXPRESSION TAG	UNP P08575
B	580	HIS	-	EXPRESSION TAG	UNP P08575

- Molecule 2 is SUGAR (N-ACETYL-D-GLUCOSAMINE) (three-letter code: NAG) (formula: $C_8H_{15}NO_6$).



Mol	Chain	Residues	Atoms				ZeroOcc	AltConf
2	A	1	Total	C	N	O	0	0
			14	8	1	5		
2	A	1	Total	C	N	O	0	0
			14	8	1	5		
2	A	1	Total	C	N	O	0	0
			14	8	1	5		
2	A	1	Total	C	N	O	0	0
			14	8	1	5		
2	A	1	Total	C	N	O	0	0
			14	8	1	5		
2	B	1	Total	C	N	O	0	0
			14	8	1	5		
2	B	1	Total	C	N	O	0	0
			14	8	1	5		
2	B	1	Total	C	N	O	0	0
			14	8	1	5		
2	B	1	Total	C	N	O	0	0
			14	8	1	5		
2	B	1	Total	C	N	O	0	0
			14	8	1	5		

- Molecule 3 is SULFATE ION (three-letter code: SO4) (formula: O_4S).

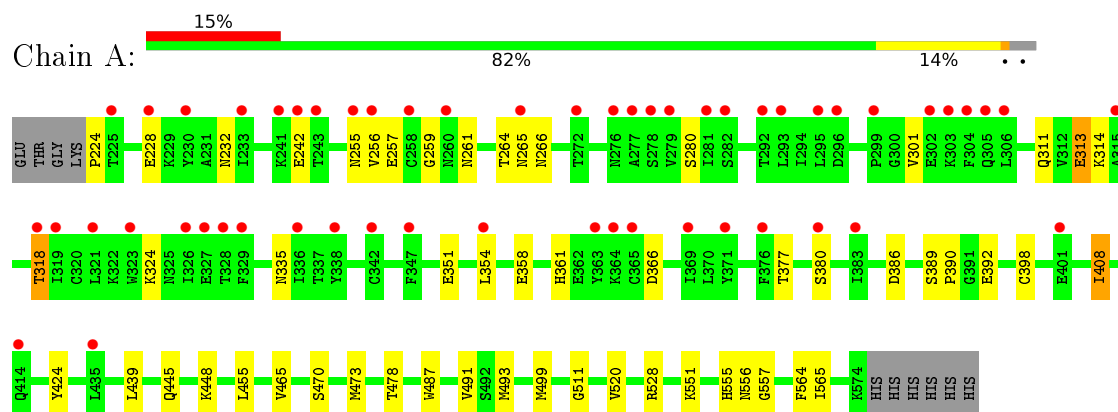


Mol	Chain	Residues	Atoms			ZeroOcc	AltConf
3	A	1	Total	O	S	0	0
			5	4	1		
3	A	1	Total	O	S	0	0
			5	4	1		
3	A	1	Total	O	S	0	0
			5	4	1		
3	B	1	Total	O	S	0	0
			5	4	1		
3	B	1	Total	O	S	0	0
			5	4	1		

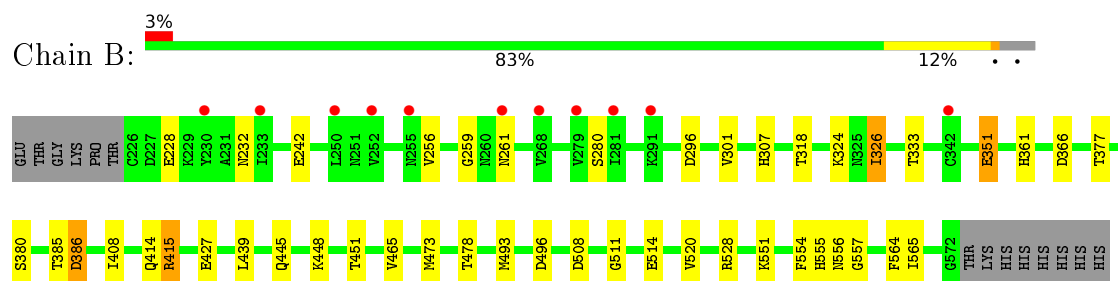
3 Residue-property plots

These plots are drawn for all protein, RNA and DNA chains in the entry. The first graphic for a chain summarises the proportions of errors displayed in the second graphic. The second graphic shows the sequence view annotated by issues in geometry and electron density. Residues are color-coded according to the number of geometric quality criteria for which they contain at least one outlier: green = 0, yellow = 1, orange = 2 and red = 3 or more. A red dot above a residue indicates a poor fit to the electron density ($RSRZ > 2$). Stretches of 2 or more consecutive residues without any outlier are shown as a green connector. Residues present in the sample, but not in the model, are shown in grey.

• Molecule 1: RECEPTOR-TYPE TYROSINE-PROTEIN PHOSPHATASE C



• Molecule 1: RECEPTOR-TYPE TYROSINE-PROTEIN PHOSPHATASE C



4 Data and refinement statistics

Property	Value	Source
Space group	P 1 21 1	Depositor
Cell constants a, b, c, α , β , γ	94.55Å 59.41Å 100.42Å 90.00° 111.66° 90.00°	Depositor
Resolution (Å)	50.00 – 2.90 54.69 – 2.90	Depositor EDS
% Data completeness (in resolution range)	96.8 (50.00-2.90) 96.8 (54.69-2.90)	Depositor EDS
R_{merge}	0.09	Depositor
R_{sym}	(Not available)	Depositor
$\langle I/\sigma(I) \rangle$ ¹	1.93 (at 2.91Å)	Xtriage
Refinement program	BUSTER 2.11.2	Depositor
R, R_{free}	0.226 , 0.249 0.245 , 0.280	Depositor DCC
R_{free} test set	1161 reflections (5.42%)	DCC
Wilson B-factor (Å ²)	60.4	Xtriage
Anisotropy	0.971	Xtriage
Bulk solvent k_{sol} (e/Å ³), B_{sol} (Å ²)	0.26 , 55.7	EDS
L-test for twinning ²	$\langle L \rangle = 0.49$, $\langle L^2 \rangle = 0.32$	Xtriage
Estimated twinning fraction	No twinning to report.	Xtriage
F_o, F_c correlation	0.92	EDS
Total number of atoms	5811	wwPDB-VP
Average B, all atoms (Å ²)	107.0	wwPDB-VP

Xtriage's analysis on translational NCS is as follows: *The largest off-origin peak in the Patterson function is 4.60% of the height of the origin peak. No significant pseudotranslation is detected.*

¹Intensities estimated from amplitudes.

²Theoretical values of $\langle |L| \rangle$, $\langle L^2 \rangle$ for acentric reflections are 0.5, 0.375 respectively for untwinned datasets, and 0.333, 0.2 for perfectly twinned datasets.

5 Model quality [i](#)

5.1 Standard geometry [i](#)

Bond lengths and bond angles in the following residue types are not validated in this section: NAG, SO4

The Z score for a bond length (or angle) is the number of standard deviations the observed value is removed from the expected value. A bond length (or angle) with $|Z| > 5$ is considered an outlier worth inspection. RMSZ is the root-mean-square of all Z scores of the bond lengths (or angles).

Mol	Chain	Bond lengths		Bond angles	
		RMSZ	$\# Z > 5$	RMSZ	$\# Z > 5$
1	A	0.44	0/2900	0.71	2/3933 (0.1%)
1	B	0.43	0/2869	0.68	0/3891
All	All	0.44	0/5769	0.70	2/7824 (0.0%)

There are no bond length outliers.

All (2) bond angle outliers are listed below:

Mol	Chain	Res	Type	Atoms	Z	Observed(°)	Ideal(°)
1	A	313	GLU	CA-CB-CG	6.15	126.93	113.40
1	A	264	THR	C-N-CA	5.87	136.37	121.70

There are no chirality outliers.

There are no planarity outliers.

5.2 Too-close contacts [i](#)

In the following table, the Non-H and H(model) columns list the number of non-hydrogen atoms and hydrogen atoms in the chain respectively. The H(added) column lists the number of hydrogen atoms added and optimized by MolProbity. The Clashes column lists the number of clashes within the asymmetric unit, whereas Symm-Clashes lists symmetry related clashes.

Mol	Chain	Non-H	H(model)	H(added)	Clashes	Symm-Clashes
1	A	2831	0	2700	20	0
1	B	2801	0	2664	15	0
2	A	70	0	65	1	0
2	B	84	0	78	0	0
3	A	15	0	0	0	0
3	B	10	0	0	0	0
All	All	5811	0	5507	34	0

The all-atom clashscore is defined as the number of clashes found per 1000 atoms (including hydrogen atoms). The all-atom clashscore for this structure is 3.

All (34) close contacts within the same asymmetric unit are listed below, sorted by their clash magnitude.

Atom-1	Atom-2	Interatomic distance (Å)	Clash overlap (Å)
1:A:491:VAL:HG12	1:A:499:MET:HE2	1.76	0.67
1:A:565:ILE:HD13	1:B:351:GLU:HG3	1.79	0.65
1:B:385:THR:O	1:B:386:ASP:O	2.16	0.62
1:A:491:VAL:HG12	1:A:499:MET:CE	2.29	0.62
1:A:358:GLU:HB3	1:A:361:HIS:CD2	2.34	0.62
1:A:511:GLY:HA3	1:A:556:ASN:HB2	1.90	0.53
1:A:255:ASN:ND2	1:A:265:ASN:O	2.43	0.52
1:A:311:GLN:HG3	1:A:314:LYS:HB2	1.92	0.51
1:A:555:HIS:CD2	1:A:557:GLY:H	2.28	0.51
1:A:520:VAL:HB	1:A:528:ARG:HB2	1.93	0.51
1:A:301:VAL:HG22	1:A:377:THR:HB	1.93	0.51
1:B:414:GLN:O	1:B:415:ARG:HB2	2.11	0.50
1:B:448:LYS:O	1:B:478:THR:HG21	2.11	0.50
1:B:555:HIS:CD2	1:B:557:GLY:H	2.29	0.50
1:B:366:ASP:OD1	1:B:380:SER:OG	2.30	0.50
1:A:448:LYS:O	1:A:478:THR:HG21	2.12	0.49
1:A:366:ASP:OD1	1:A:380:SER:OG	2.30	0.49
1:B:551:LYS:HG2	1:B:565:ILE:HG12	1.94	0.48
1:A:551:LYS:HG2	1:A:565:ILE:HG12	1.96	0.48
1:B:307:HIS:CD2	1:B:324:LYS:HG3	2.49	0.48
1:B:520:VAL:HB	1:B:528:ARG:HB2	1.94	0.47
1:B:301:VAL:HG22	1:B:377:THR:HB	1.98	0.45
1:A:398:CYS:HB3	1:A:408:ILE:HG23	1.98	0.45
1:B:511:GLY:HA3	1:B:556:ASN:HB2	2.00	0.43
1:A:424:TYR:HB3	1:A:455:LEU:HD13	1.99	0.43
1:B:514:GLU:HG3	1:B:554:PHE:HE1	1.84	0.43
1:A:392:GLU:HB3	1:A:470:SER:HB3	2.01	0.42
1:A:318:THR:CG2	1:A:354:LEU:O	2.68	0.42
1:B:555:HIS:HD2	1:B:557:GLY:H	1.68	0.41
1:A:487:TRP:CZ2	2:A:1577:NAG:H81	2.55	0.41
1:A:318:THR:HG23	1:A:354:LEU:O	2.20	0.41
1:A:224:PRO:HB2	1:A:228:GLU:HB3	2.03	0.41
1:B:326:ILE:H	1:B:326:ILE:HG13	1.59	0.41
1:B:451:THR:H	1:B:478:THR:HG22	1.87	0.40

There are no symmetry-related clashes.

5.3 Torsion angles [i](#)

5.3.1 Protein backbone [i](#)

In the following table, the Percentiles column shows the percent Ramachandran outliers of the chain as a percentile score with respect to all X-ray entries followed by that with respect to entries of similar resolution.

The Analysed column shows the number of residues for which the backbone conformation was analysed, and the total number of residues.

Mol	Chain	Analysed	Favoured	Allowed	Outliers	Percentiles	
1	A	349/361 (97%)	333 (95%)	11 (3%)	5 (1%)	14	44
1	B	345/361 (96%)	338 (98%)	4 (1%)	3 (1%)	21	57
All	All	694/722 (96%)	671 (97%)	15 (2%)	8 (1%)	16	48

All (8) Ramachandran outliers are listed below:

Mol	Chain	Res	Type
1	A	259	GLY
1	A	266	ASN
1	A	386	ASP
1	B	259	GLY
1	B	386	ASP
1	B	415	ARG
1	A	389	SER
1	A	390	PRO

5.3.2 Protein sidechains [i](#)

In the following table, the Percentiles column shows the percent sidechain outliers of the chain as a percentile score with respect to all X-ray entries followed by that with respect to entries of similar resolution.

The Analysed column shows the number of residues for which the sidechain conformation was analysed, and the total number of residues.

Mol	Chain	Analysed	Rotameric	Outliers	Percentiles	
1	A	324/333 (97%)	306 (94%)	18 (6%)	26	60
1	B	320/333 (96%)	298 (93%)	22 (7%)	19	48
All	All	644/666 (97%)	604 (94%)	40 (6%)	23	55

All (40) residues with a non-rotameric sidechain are listed below:

Mol	Chain	Res	Type
1	A	232	ASN
1	A	242	GLU
1	A	256	VAL
1	A	257	GLU
1	A	261	ASN
1	A	280	SER
1	A	313	GLU
1	A	318	THR
1	A	324	LYS
1	A	335	ASN
1	A	351	GLU
1	A	408	ILE
1	A	439	LEU
1	A	445	GLN
1	A	465	VAL
1	A	473	MET
1	A	493	MET
1	A	564	PHE
1	B	228	GLU
1	B	232	ASN
1	B	242	GLU
1	B	256	VAL
1	B	261	ASN
1	B	280	SER
1	B	296	ASP
1	B	318	THR
1	B	326	ILE
1	B	333	THR
1	B	351	GLU
1	B	361	HIS
1	B	408	ILE
1	B	427	GLU
1	B	439	LEU
1	B	445	GLN
1	B	465	VAL
1	B	473	MET
1	B	493	MET
1	B	496	ASP
1	B	508	ASP
1	B	564	PHE

Some sidechains can be flipped to improve hydrogen bonding and reduce clashes. All (9) such sidechains are listed below:

Mol	Chain	Res	Type
1	A	255	ASN
1	A	394	GLN
1	A	411	ASN
1	A	475	HIS
1	A	555	HIS
1	A	568	HIS
1	B	475	HIS
1	B	555	HIS
1	B	567	HIS

5.3.3 RNA [i](#)

There are no RNA molecules in this entry.

5.4 Non-standard residues in protein, DNA, RNA chains [i](#)

There are no non-standard protein/DNA/RNA residues in this entry.

5.5 Carbohydrates [i](#)

There are no carbohydrates in this entry.

5.6 Ligand geometry [i](#)

16 ligands are modelled in this entry.

In the following table, the Counts columns list the number of bonds (or angles) for which Mogul statistics could be retrieved, the number of bonds (or angles) that are observed in the model and the number of bonds (or angles) that are defined in the chemical component dictionary. The Link column lists molecule types, if any, to which the group is linked. The Z score for a bond length (or angle) is the number of standard deviations the observed value is removed from the expected value. A bond length (or angle) with $|Z| > 2$ is considered an outlier worth inspection. RMSZ is the root-mean-square of all Z scores of the bond lengths (or angles).

Mol	Type	Chain	Res	Link	Bond lengths			Bond angles		
					Counts	RMSZ	$\# Z > 2$	Counts	RMSZ	$\# Z > 2$
2	NAG	A	1575	1	14,14,15	0.28	0	15,19,21	0.77	1 (6%)
2	NAG	A	1576	1	14,14,15	0.26	0	15,19,21	0.37	0
2	NAG	A	1577	1	14,14,15	0.24	0	15,19,21	0.41	0
2	NAG	A	1578	1	14,14,15	0.25	0	15,19,21	0.42	0
2	NAG	A	1579	1	14,14,15	0.26	0	15,19,21	0.71	1 (6%)

Mol	Type	Chain	Res	Link	Bond lengths			Bond angles		
					Counts	RMSZ	# Z > 2	Counts	RMSZ	# Z > 2
3	SO4	A	1580	-	4,4,4	0.42	0	6,6,6	0.14	0
3	SO4	A	1581	-	4,4,4	0.22	0	6,6,6	0.25	0
3	SO4	A	1582	-	4,4,4	0.10	0	6,6,6	0.11	0
2	NAG	B	1573	1	14,14,15	0.33	0	15,19,21	0.63	0
2	NAG	B	1574	1	14,14,15	0.27	0	15,19,21	0.43	0
2	NAG	B	1575	1	14,14,15	0.26	0	15,19,21	0.46	0
2	NAG	B	1576	1	14,14,15	0.27	0	15,19,21	0.48	0
2	NAG	B	1577	1	14,14,15	0.30	0	15,19,21	0.51	0
2	NAG	B	1578	1	14,14,15	0.27	0	15,19,21	0.31	0
3	SO4	B	1579	-	4,4,4	0.17	0	6,6,6	0.08	0
3	SO4	B	1580	-	4,4,4	0.24	0	6,6,6	0.17	0

In the following table, the Chirals column lists the number of chiral outliers, the number of chiral centers analysed, the number of these observed in the model and the number defined in the chemical component dictionary. Similar counts are reported in the Torsion and Rings columns. '-' means no outliers of that kind were identified.

Mol	Type	Chain	Res	Link	Chirals	Torsions	Rings
2	NAG	A	1575	1	-	0/6/23/26	0/1/1/1
2	NAG	A	1576	1	-	0/6/23/26	0/1/1/1
2	NAG	A	1577	1	-	0/6/23/26	0/1/1/1
2	NAG	A	1578	1	-	0/6/23/26	0/1/1/1
2	NAG	A	1579	1	-	0/6/23/26	0/1/1/1
3	SO4	A	1580	-	-	0/0/0/0	0/0/0/0
3	SO4	A	1581	-	-	0/0/0/0	0/0/0/0
3	SO4	A	1582	-	-	0/0/0/0	0/0/0/0
2	NAG	B	1573	1	-	0/6/23/26	0/1/1/1
2	NAG	B	1574	1	-	0/6/23/26	0/1/1/1
2	NAG	B	1575	1	-	0/6/23/26	0/1/1/1
2	NAG	B	1576	1	-	0/6/23/26	0/1/1/1
2	NAG	B	1577	1	-	0/6/23/26	0/1/1/1
2	NAG	B	1578	1	-	0/6/23/26	0/1/1/1
3	SO4	B	1579	-	-	0/0/0/0	0/0/0/0
3	SO4	B	1580	-	-	0/0/0/0	0/0/0/0

There are no bond length outliers.

All (2) bond angle outliers are listed below:

Mol	Chain	Res	Type	Atoms	Z	Observed(°)	Ideal(°)
2	A	1579	NAG	C1-O5-C5	2.52	115.84	112.14
2	A	1575	NAG	C1-O5-C5	2.77	116.22	112.14

There are no chirality outliers.

There are no torsion outliers.

There are no ring outliers.

1 monomer is involved in 1 short contact:

Mol	Chain	Res	Type	Clashes	Symm-Clashes
2	A	1577	NAG	1	0

5.7 Other polymers [i](#)

There are no such residues in this entry.

5.8 Polymer linkage issues [i](#)

There are no chain breaks in this entry.

6 Fit of model and data ⓘ

6.1 Protein, DNA and RNA chains ⓘ

In the following table, the column labelled ‘#RSRZ> 2’ contains the number (and percentage) of RSRZ outliers, followed by percent RSRZ outliers for the chain as percentile scores relative to all X-ray entries and entries of similar resolution. The OWAB column contains the minimum, median, 95th percentile and maximum values of the occupancy-weighted average B-factor per residue. The column labelled ‘Q< 0.9’ lists the number of (and percentage) of residues with an average occupancy less than 0.9.

Mol	Chain	Analysed	<RSRZ>	#RSRZ>2	OWAB(Å ²)	Q<0.9
1	A	351/361 (97%)	0.67	54 (15%) 3 1	32, 143, 193, 207	0
1	B	347/361 (96%)	0.26	11 (3%) 51 43	47, 78, 169, 202	0
All	All	698/722 (96%)	0.47	65 (9%) 11 7	32, 88, 189, 207	0

All (65) RSRZ outliers are listed below:

Mol	Chain	Res	Type	RSRZ
1	A	336	ILE	7.3
1	A	295	LEU	7.1
1	A	256	VAL	5.7
1	A	329	PHE	4.8
1	A	299	PRO	4.7
1	A	233	ILE	4.5
1	A	383	ILE	4.4
1	B	281	ILE	4.4
1	B	261	ASN	4.4
1	A	241	LYS	4.3
1	A	260	ASN	4.3
1	B	279	VAL	4.3
1	A	306	LEU	4.2
1	B	230	TYR	4.2
1	A	242	GLU	4.1
1	A	272	THR	3.9
1	A	302	GLU	3.6
1	B	250	LEU	3.6
1	A	305	GLN	3.5
1	A	276	ASN	3.5
1	A	338	TYR	3.4
1	A	326	ILE	3.3
1	B	233	ILE	3.2
1	A	293	LEU	3.1

Continued on next page...

Continued from previous page...

Mol	Chain	Res	Type	RSRZ
1	A	376	PHE	3.1
1	A	435	LEU	3.1
1	A	380	SER	3.0
1	A	315	ALA	3.0
1	A	258	CYS	2.9
1	A	347	PHE	2.8
1	A	281	ILE	2.8
1	A	303	LYS	2.8
1	B	342	CYS	2.8
1	B	268	VAL	2.7
1	A	292	THR	2.6
1	A	277	ALA	2.6
1	A	365	CYS	2.6
1	A	401	GLU	2.6
1	A	230	TYR	2.5
1	A	321	LEU	2.5
1	A	369	ILE	2.5
1	A	342	CYS	2.5
1	A	319	ILE	2.5
1	A	354	LEU	2.5
1	B	291	LYS	2.4
1	A	318	THR	2.4
1	B	252	VAL	2.4
1	A	228	GLU	2.4
1	A	255	ASN	2.4
1	A	328	THR	2.4
1	A	323	TRP	2.3
1	B	255	ASN	2.3
1	A	363	TYR	2.3
1	A	414	GLN	2.3
1	A	304	PHE	2.3
1	A	371	TYR	2.3
1	A	279	VAL	2.2
1	A	364	LYS	2.2
1	A	327	GLU	2.2
1	A	296	ASP	2.2
1	A	278	SER	2.1
1	A	282	SER	2.1
1	A	265	ASN	2.1
1	A	243	THR	2.0
1	A	225	THR	2.0

6.2 Non-standard residues in protein, DNA, RNA chains [i](#)

There are no non-standard protein/DNA/RNA residues in this entry.

6.3 Carbohydrates [i](#)

There are no carbohydrates in this entry.

6.4 Ligands [i](#)

In the following table, the Atoms column lists the number of modelled atoms in the group and the number defined in the chemical component dictionary. LLDF column lists the quality of electron density of the group with respect to its neighbouring residues in protein, DNA or RNA chains. The B-factors column lists the minimum, median, 95th percentile and maximum values of B factors of atoms in the group. The column labelled 'Q< 0.9' lists the number of atoms with occupancy less than 0.9.

Mol	Type	Chain	Res	Atoms	RSCC	RSR	LLDF	B-factors(\AA^2)	Q<0.9
2	NAG	A	1578	14/15	0.91	0.15	1.35	125,126,127,127	0
2	NAG	A	1575	14/15	0.81	0.26	0.49	156,158,158,159	0
2	NAG	A	1577	14/15	0.95	0.23	0.44	52,55,64,68	0
2	NAG	B	1576	14/15	0.83	0.20	0.33	127,130,132,132	0
2	NAG	B	1577	14/15	0.91	0.18	-0.11	70,75,78,80	0
2	NAG	B	1575	14/15	0.95	0.19	-0.12	65,67,70,72	0
2	NAG	B	1578	14/15	0.80	0.23	-0.22	125,128,130,131	0
2	NAG	B	1573	14/15	0.83	0.21	-0.27	123,124,125,126	0
3	SO4	B	1580	5/5	0.99	0.14	-1.46	57,58,62,63	0
3	SO4	A	1580	5/5	0.99	0.20	-1.52	38,39,42,44	0
3	SO4	A	1582	5/5	0.87	0.24	-	138,138,138,138	0
2	NAG	B	1574	14/15	0.93	0.20	-	91,93,94,96	0
2	NAG	A	1579	14/15	0.83	0.18	-	154,155,156,156	0
3	SO4	B	1579	5/5	0.94	0.14	-	123,123,123,123	0
2	NAG	A	1576	14/15	0.93	0.19	-	70,73,75,78	0
3	SO4	A	1581	5/5	0.96	0.17	-	95,95,95,96	0

6.5 Other polymers [i](#)

There are no such residues in this entry.