



Full wwPDB X-ray Structure Validation Report ⓘ

Feb 1, 2016 – 02:08 AM GMT

PDB ID : 2FS9
Title : Human beta tryptase II with inhibitor CRA-28427
Authors : Somoza, J.R.
Deposited on : 2006-01-21
Resolution : 2.30 Å(reported)

This is a Full wwPDB X-ray Structure Validation Report for a publicly released PDB entry.
We welcome your comments at validation@mail.wwpdb.org
A user guide is available at
<http://wwpdb.org/validation/2016/XrayValidationReportHelp>
with specific help available everywhere you see the ⓘ symbol.

The following versions of software and data (see [references ⓘ](#)) were used in the production of this report:

MolProbity : 4.02b-467
Mogul : 1.7 (RC4), CSD as536be (2015)
Xtriage (Phenix) : 1.9-1692
EDS : rb-20026688
Percentile statistics : 20151230.v01 (using entries in the PDB archive December 30th 2015)
Refmac : 5.8.0135
CCP4 : 6.5.0
Ideal geometry (proteins) : Engh & Huber (2001)
Ideal geometry (DNA, RNA) : Parkinson et al. (1996)
Validation Pipeline (wwPDB-VP) : trunk26865

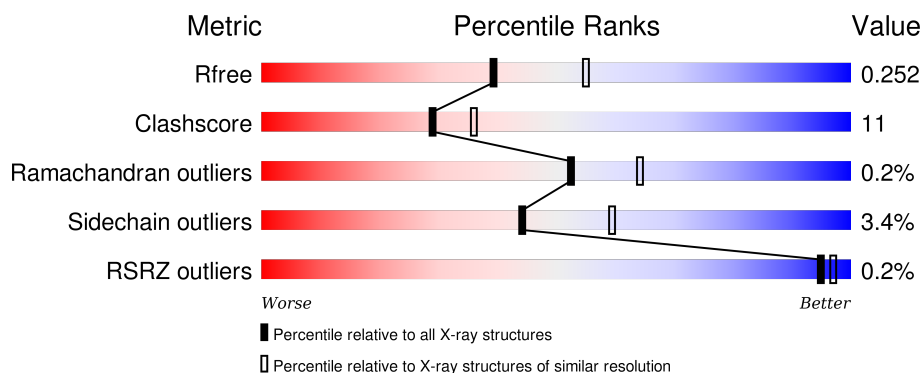
1 Overall quality at a glance

The following experimental techniques were used to determine the structure:

X-RAY DIFFRACTION

The reported resolution of this entry is 2.30 Å.

Percentile scores (ranging between 0-100) for global validation metrics of the entry are shown in the following graphic. The table shows the number of entries on which the scores are based.



Metric	Whole archive (#Entries)	Similar resolution (#Entries, resolution range(Å))
R_{free}	91344	3852 (2.30-2.30)
Clashscore	102246	4452 (2.30-2.30)
Ramachandran outliers	100387	4410 (2.30-2.30)
Sidechain outliers	100360	4409 (2.30-2.30)
RSRZ outliers	91569	3857 (2.30-2.30)

The table below summarises the geometric issues observed across the polymeric chains and their fit to the electron density. The red, orange, yellow and green segments on the lower bar indicate the fraction of residues that contain outliers for ≥ 3 , 2, 1 and 0 types of geometric quality criteria. A grey segment represents the fraction of residues that are not modelled. The numeric value for each fraction is indicated below the corresponding segment, with a dot representing fractions $\leq 5\%$. The upper red bar (where present) indicates the fraction of residues that have poor fit to the electron density. The numeric value is given above the bar.

Mol	Chain	Length	Quality of chain
1	A	245	<div> <div>76%</div> <div>23%</div> <div>.</div> </div>
1	B	245	<div> <div>78%</div> <div>20%</div> <div>..</div> </div>
1	C	245	<div> <div>71%</div> <div>25%</div> <div>..</div> </div>
1	D	245	<div> <div>77%</div> <div>21%</div> <div>..</div> </div>

The following table lists non-polymeric compounds, carbohydrate monomers and non-standard

residues in protein, DNA, RNA chains that are outliers for geometric or electron-density-fit criteria:

Mol	Type	Chain	Res	Chirality	Geometry	Clashes	Electron density
2	C4A	A	999	-	-	-	X
2	C4A	B	998	-	-	-	X
2	C4A	C	997	-	-	-	X
2	C4A	D	996	-	-	-	X

2 Entry composition [i](#)

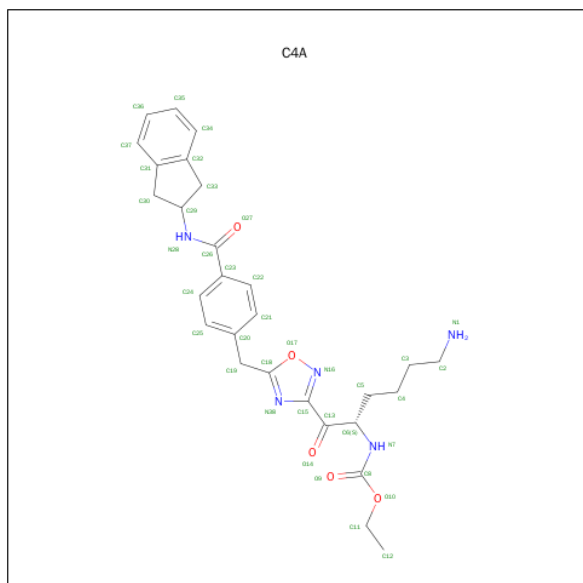
There are 3 unique types of molecules in this entry. The entry contains 8123 atoms, of which 0 are hydrogens and 0 are deuteriums.

In the tables below, the ZeroOcc column contains the number of atoms modelled with zero occupancy, the AltConf column contains the number of residues with at least one atom in alternate conformation and the Trace column contains the number of residues modelled with at most 2 atoms.

- Molecule 1 is a protein called Tryptase beta-2.

Mol	Chain	Residues	Atoms					ZeroOcc	AltConf	Trace
1	A	243	Total	C	N	O	S	0	0	0
			1920	1230	338	340	12			
1	B	243	Total	C	N	O	S	0	0	0
			1920	1230	338	340	12			
1	C	243	Total	C	N	O	S	0	0	0
			1920	1230	338	340	12			
1	D	243	Total	C	N	O	S	0	0	0
			1920	1230	338	340	12			

- Molecule 2 is ETHYL {(1S)-5-AMINO-1-[(5-{4-[(2,3-DIHYDRO-1H-INDEN-2-YLAMINO) CARBONYL]BENZYL}-1,2,4-OXADIAZOL-3-YL)CARBONYL]PENTYL}CARBAMATE (three-letter code: C4A) (formula: C₂₈H₃₃N₅O₅).



Mol	Chain	Residues	Atoms				ZeroOcc	AltConf
2	A	1	Total	C	N	O	0	0
			38	28	5	5		

Continued on next page...

Continued from previous page...

Mol	Chain	Residues	Atoms				ZeroOcc	AltConf
2	B	1	Total	C	N	O	0	0
			38	28	5	5		
2	C	1	Total	C	N	O	0	0
			38	28	5	5		
2	D	1	Total	C	N	O	0	0
			38	28	5	5		

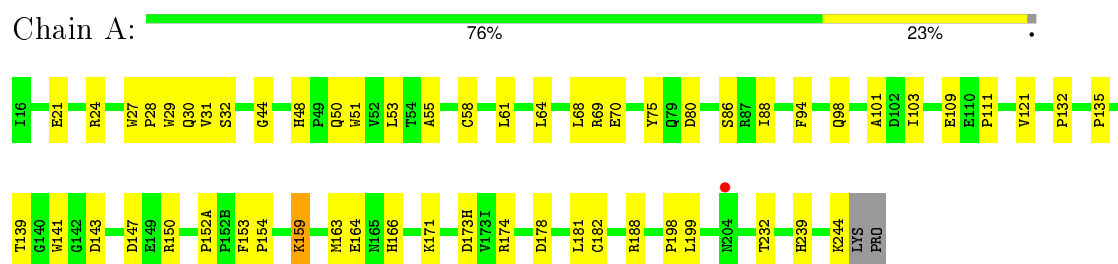
- Molecule 3 is water.

Mol	Chain	Residues	Atoms		ZeroOcc	AltConf
3	A	69	Total	O	0	0
			69	69		
3	B	85	Total	O	0	0
			85	85		
3	C	64	Total	O	0	0
			64	64		
3	D	73	Total	O	0	0
			73	73		

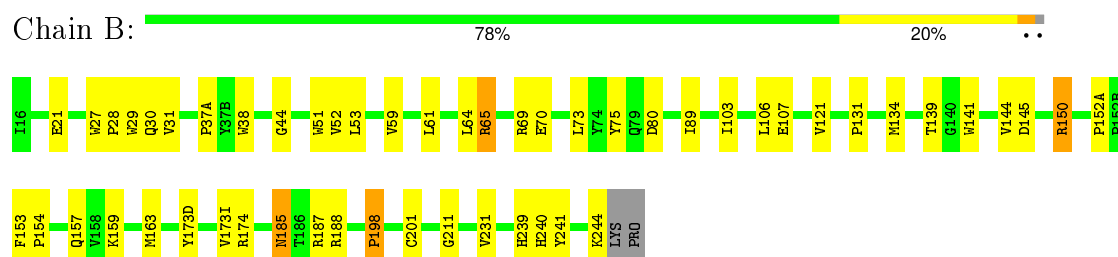
3 Residue-property plots

These plots are drawn for all protein, RNA and DNA chains in the entry. The first graphic for a chain summarises the proportions of errors displayed in the second graphic. The second graphic shows the sequence view annotated by issues in geometry and electron density. Residues are color-coded according to the number of geometric quality criteria for which they contain at least one outlier: green = 0, yellow = 1, orange = 2 and red = 3 or more. A red dot above a residue indicates a poor fit to the electron density ($RSRZ > 2$). Stretches of 2 or more consecutive residues without any outlier are shown as a green connector. Residues present in the sample, but not in the model, are shown in grey.

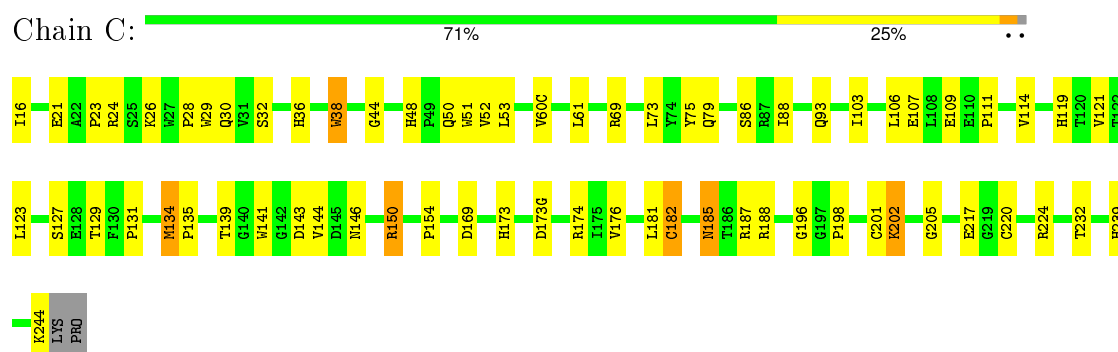
• Molecule 1: Trypsin beta-2



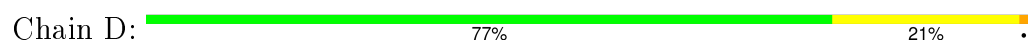
• Molecule 1: Trypsin beta-2

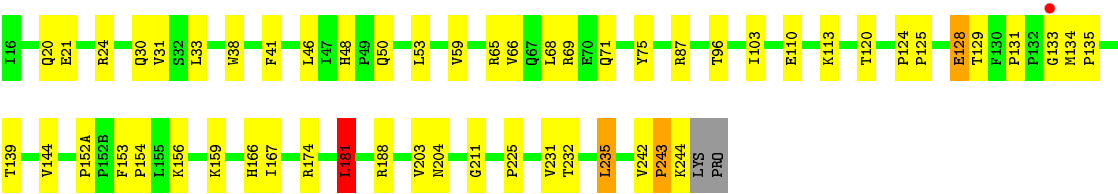


• Molecule 1: Trypsin beta-2



• Molecule 1: Trypsin beta-2





4 Data and refinement statistics

Property	Value	Source
Space group	P 31	Depositor
Cell constants a, b, c, α , β , γ	78.06 Å 78.06 Å 164.42 Å 90.00° 90.00° 120.00°	Depositor
Resolution (Å)	19.76 – 2.30 19.76 – 2.25	Depositor EDS
% Data completeness (in resolution range)	93.7 (19.76-2.30) 93.1 (19.76-2.25)	Depositor EDS
R_{merge}	0.12	Depositor
R_{sym}	(Not available)	Depositor
$\langle I/\sigma(I) \rangle$ ¹	2.13 (at 2.26 Å)	Xtriage
Refinement program	CNS	Depositor
R, R_{free}	0.211 , 0.254 0.211 , 0.252	Depositor DCC
R_{free} test set	4740 reflections (10.17%)	DCC
Wilson B-factor (Å ²)	24.1	Xtriage
Anisotropy	0.295	Xtriage
Bulk solvent k_{sol} (e/Å ³), B_{sol} (Å ²)	0.32 , 9.8	EDS
Estimated twinning fraction	0.009 for -h,-k,l 0.479 for h,-h-k,-l 0.013 for -k,-h,-l	Xtriage
L-test for twinning ²	$\langle L \rangle = 0.51$, $\langle L^2 \rangle = 0.34$	Xtriage
Outliers	0 of 53150 reflections	Xtriage
F_o, F_c correlation	0.94	EDS
Total number of atoms	8123	wwPDB-VP
Average B, all atoms (Å ²)	28.0	wwPDB-VP

Xtriage's analysis on translational NCS is as follows: *The largest off-origin peak in the Patterson function is 3.81% of the height of the origin peak. No significant pseudotranslation is detected.*

¹ Intensities estimated from amplitudes.

² Theoretical values of $\langle |L| \rangle$, $\langle L^2 \rangle$ for acentric reflections are 0.5, 0.375 respectively for untwinned datasets, and 0.333, 0.2 for perfectly twinned datasets.

5 Model quality [i](#)

5.1 Standard geometry [i](#)

Bond lengths and bond angles in the following residue types are not validated in this section: C4A

The Z score for a bond length (or angle) is the number of standard deviations the observed value is removed from the expected value. A bond length (or angle) with $|Z| > 5$ is considered an outlier worth inspection. RMSZ is the root-mean-square of all Z scores of the bond lengths (or angles).

Mol	Chain	Bond lengths		Bond angles	
		RMSZ	# Z >5	RMSZ	# Z >5
1	A	0.37	0/1985	0.66	2/2720 (0.1%)
1	B	0.37	0/1985	0.65	0/2720
1	C	0.38	0/1985	0.64	0/2720
1	D	0.38	0/1985	0.67	1/2720 (0.0%)
All	All	0.37	0/7940	0.65	3/10880 (0.0%)

There are no bond length outliers.

All (3) bond angle outliers are listed below:

Mol	Chain	Res	Type	Atoms	Z	Observed(°)	Ideal(°)
1	A	173(H)	ASP	CB-CG-OD1	-6.64	112.32	118.30
1	D	181	LEU	CA-CB-CG	6.44	130.11	115.30
1	A	173(H)	ASP	CB-CG-OD2	5.95	123.65	118.30

There are no chirality outliers.

There are no planarity outliers.

5.2 Too-close contacts [i](#)

In the following table, the Non-H and H(model) columns list the number of non-hydrogen atoms and hydrogen atoms in the chain respectively. The H(added) column lists the number of hydrogen atoms added and optimized by MolProbity. The Clashes column lists the number of clashes within the asymmetric unit, whereas Symm-Clashes lists symmetry related clashes.

Mol	Chain	Non-H	H(model)	H(added)	Clashes	Symm-Clashes
1	A	1920	0	1854	46	0
1	B	1920	0	1854	38	0
1	C	1920	0	1854	55	0
1	D	1920	0	1854	42	0

Continued on next page...

Continued from previous page...

Mol	Chain	Non-H	H(model)	H(added)	Clashes	Symm-Clashes
2	A	38	0	33	0	0
2	B	38	0	33	1	0
2	C	38	0	33	0	0
2	D	38	0	33	1	0
3	A	69	0	0	4	0
3	B	85	0	0	5	0
3	C	64	0	0	1	0
3	D	73	0	0	6	0
All	All	8123	0	7548	176	0

The all-atom clashscore is defined as the number of clashes found per 1000 atoms (including hydrogen atoms). The all-atom clashscore for this structure is 11.

All (176) close contacts within the same asymmetric unit are listed below, sorted by their clash magnitude.

Atom-1	Atom-2	Interatomic distance (Å)	Clash overlap (Å)
1:B:239:HIS:HB3	1:B:244:LYS:HE2	1.34	1.06
1:D:135:PRO:HA	3:D:1017:HOH:O	1.73	0.87
1:D:59:VAL:HA	3:D:1022:HOH:O	1.79	0.83
1:C:146:ASN:HD21	1:C:220:CYS:H	1.28	0.82
1:A:21:GLU:HG3	1:A:154:PRO:HB2	1.62	0.81
1:C:185:ASN:ND2	1:C:188:ARG:H	1.77	0.81
1:D:69:ARG:HH12	1:D:71:GLN:HE21	1.29	0.80
1:C:21:GLU:HG3	1:C:154:PRO:HB2	1.70	0.74
1:C:23:PRO:HG2	1:C:26:LYS:HG3	1.69	0.74
1:C:181:LEU:HD23	1:C:182:CYS:N	2.05	0.72
1:D:131:PRO:HD2	1:D:134:MET:HE2	1.72	0.72
1:C:146:ASN:HD21	1:C:220:CYS:N	1.90	0.70
1:B:59:VAL:HA	3:B:1026:HOH:O	1.92	0.69
1:A:181:LEU:HD23	1:A:182:CYS:N	2.08	0.69
1:D:21:GLU:HG3	1:D:154:PRO:HB2	1.76	0.67
1:A:163:MET:HG2	3:A:1057:HOH:O	1.94	0.67
1:D:159:LYS:O	1:D:188:ARG:HD3	1.95	0.67
1:C:48:HIS:HD2	1:C:50:GLN:H	1.41	0.67
1:A:132:PRO:HG3	1:A:164:GLU:HG3	1.75	0.66
1:D:48:HIS:HD2	1:D:50:GLN:H	1.43	0.66
1:C:61:LEU:HD21	1:C:88:ILE:HG13	1.78	0.65
1:C:75:TYR:CE2	1:D:75:TYR:HB2	2.30	0.65
1:C:202:LYS:HE3	1:C:205:GLY:HA2	1.79	0.65
1:A:174:ARG:NH2	1:A:178:ASP:OD2	2.30	0.65
1:A:24:ARG:HH11	1:A:24:ARG:HB3	1.62	0.64

Continued on next page...

Continued from previous page...

Atom-1	Atom-2	Interatomic distance (Å)	Clash overlap (Å)
2:D:996:C4A:H301	3:D:1022:HOH:O	1.97	0.64
1:C:143:ASP:OD1	1:C:150:ARG:HD3	1.97	0.63
1:B:185:ASN:ND2	1:B:188:ARG:H	1.97	0.63
1:A:61:LEU:HD21	1:A:88:ILE:HG12	1.80	0.63
1:D:69:ARG:HH22	1:D:71:GLN:NE2	1.97	0.62
1:B:21:GLU:HG3	1:B:154:PRO:HB2	1.81	0.62
2:B:998:C4A:H301	3:B:1026:HOH:O	1.98	0.62
1:C:109:GLU:HA	1:C:109:GLU:OE1	2.00	0.62
1:C:169:ASP:HA	1:C:176:VAL:HG23	1.81	0.61
1:D:24:ARG:HA	1:D:71:GLN:NE2	2.15	0.61
1:C:48:HIS:CD2	1:C:50:GLN:H	2.18	0.60
1:B:159:LYS:O	1:B:188:ARG:HD3	2.01	0.60
1:A:150:ARG:HG2	3:A:1060:HOH:O	2.00	0.60
1:A:166:HIS:HD2	3:A:1012:HOH:O	1.84	0.60
1:A:24:ARG:NH1	1:A:24:ARG:HB3	2.17	0.60
1:D:124:PRO:O	1:D:235:LEU:HD21	2.02	0.60
1:B:131:PRO:O	1:B:134:MET:HB2	2.02	0.59
1:A:86:SER:HB3	1:A:109:GLU:HG2	1.83	0.59
1:A:69:ARG:HG2	1:A:69:ARG:HH11	1.67	0.59
1:A:159:LYS:O	1:A:188:ARG:HD3	2.03	0.59
1:B:31:VAL:HG22	1:B:44:GLY:C	2.24	0.58
1:D:69:ARG:HH12	1:D:71:GLN:NE2	1.97	0.57
1:D:69:ARG:NH1	1:D:71:GLN:HE21	2.01	0.57
1:A:147:ASP:OD1	1:A:150:ARG:NH2	2.37	0.57
1:D:38:TRP:CZ3	1:D:65:ARG:HG2	2.39	0.57
1:C:185:ASN:HD21	1:C:188:ARG:H	1.51	0.57
1:B:185:ASN:HD22	1:B:185:ASN:C	2.08	0.57
1:A:50:GLN:HG3	1:A:111:PRO:HA	1.86	0.57
1:D:48:HIS:CD2	1:D:50:GLN:H	2.22	0.56
1:D:133:GLY:O	1:D:134:MET:C	2.43	0.56
1:A:64:LEU:CD2	1:A:88:ILE:HD11	2.36	0.56
1:B:37(A):PRO:HD2	3:B:1079:HOH:O	2.05	0.56
1:C:185:ASN:HD22	1:C:185:ASN:C	2.09	0.56
1:B:185:ASN:ND2	1:B:187:ARG:H	2.04	0.55
1:D:24:ARG:CZ	1:D:71:GLN:HG3	2.37	0.55
1:D:181:LEU:HD12	1:D:181:LEU:C	2.27	0.55
1:C:52:VAL:HB	1:C:106:LEU:HB2	1.89	0.55
1:C:50:GLN:HG2	1:C:111:PRO:HA	1.89	0.54
1:A:48:HIS:CD2	1:A:51:TRP:HD1	2.25	0.54
1:A:174:ARG:NH2	1:A:178:ASP:CG	2.60	0.54
1:C:232:THR:HG23	3:C:1022:HOH:O	2.07	0.54

Continued on next page...

Continued from previous page...

Atom-1	Atom-2	Interatomic distance (Å)	Clash overlap (Å)
1:C:69:ARG:HH11	1:C:69:ARG:HG2	1.73	0.54
1:B:150:ARG:H	1:B:150:ARG:HD2	1.72	0.54
1:C:86:SER:HB3	1:C:109:GLU:OE1	2.08	0.53
1:A:239:HIS:CG	1:A:244:LYS:HE2	2.44	0.53
1:C:185:ASN:HD21	1:C:188:ARG:N	2.07	0.53
1:C:185:ASN:ND2	1:C:188:ARG:N	2.54	0.52
1:A:30:GLN:NE2	1:A:139:THR:OG1	2.42	0.52
1:D:211:GLY:HA2	1:D:231:VAL:HG23	1.90	0.52
1:B:53:LEU:HD11	1:B:103:ILE:HD11	1.91	0.52
1:C:114:VAL:HG13	1:C:119:HIS:HB3	1.92	0.52
1:B:173(D):TYR:CE2	1:C:60(C):VAL:HA	2.44	0.52
1:D:232:THR:HG23	3:D:1021:HOH:O	2.09	0.51
1:A:70:GLU:OE1	1:A:80:ASP:OD1	2.29	0.50
1:A:29:TRP:CG	1:A:121:VAL:HB	2.46	0.50
1:A:163:MET:HE1	1:A:171:LYS:HZ2	1.74	0.50
1:C:24:ARG:HH11	1:C:24:ARG:HG3	1.76	0.50
1:A:48:HIS:CD2	1:A:50:GLN:H	2.30	0.49
1:A:32:SER:HB2	1:A:141:TRP:CZ3	2.47	0.49
1:D:166:HIS:NE2	1:D:167:ILE:CD1	2.75	0.49
1:C:30:GLN:NE2	1:C:139:THR:OG1	2.44	0.49
1:D:53:LEU:HD11	1:D:103:ILE:HD11	1.95	0.49
1:A:31:VAL:HG22	1:A:44:GLY:C	2.33	0.49
1:C:16:ILE:O	1:C:144:VAL:HA	2.11	0.49
1:C:185:ASN:ND2	1:C:187:ARG:H	2.11	0.49
1:B:70:GLU:OE1	1:B:80:ASP:OD1	2.31	0.49
1:B:211:GLY:HA2	1:B:231:VAL:HG23	1.94	0.49
1:C:75:TYR:HE2	1:D:75:TYR:HB2	1.77	0.49
1:A:98:GLN:HG2	1:D:96:THR:HG21	1.95	0.49
1:C:185:ASN:HD22	1:C:188:ARG:H	1.58	0.48
1:C:217:GLU:HB3	1:C:224:ARG:HD2	1.96	0.48
1:A:174:ARG:HH21	1:A:178:ASP:CG	2.16	0.48
1:D:125:PRO:HD2	1:D:128:GLU:OE1	2.12	0.48
1:D:31:VAL:CG1	1:D:66:VAL:HG13	2.43	0.48
1:D:46:LEU:O	1:D:120:THR:HA	2.14	0.48
1:D:188:ARG:HG2	1:D:188:ARG:HH11	1.78	0.48
1:C:50:GLN:HG2	1:C:111:PRO:CA	2.44	0.48
1:C:28:PRO:HA	1:C:69:ARG:HD2	1.95	0.48
1:B:150:ARG:N	1:B:150:ARG:HD2	2.29	0.47
1:C:129:THR:O	1:C:131:PRO:HD3	2.13	0.47
1:A:27:TRP:N	1:A:28:PRO:HD3	2.29	0.47
1:B:52:VAL:HB	1:B:106:LEU:HB2	1.96	0.47

Continued on next page...

Continued from previous page...

Atom-1	Atom-2	Interatomic distance (Å)	Clash overlap (Å)
1:B:89:ILE:HD13	1:B:241:TYR:CD1	2.49	0.47
1:C:239:HIS:ND1	1:C:244:LYS:HE2	2.29	0.47
1:A:61:LEU:CD2	1:A:88:ILE:HG12	2.44	0.47
1:A:143:ASP:OD2	1:A:150:ARG:NH1	2.47	0.47
1:C:169:ASP:HA	1:C:176:VAL:CG2	2.44	0.47
1:B:185:ASN:HD22	1:B:188:ARG:H	1.62	0.47
1:A:188:ARG:HG2	1:A:188:ARG:HH11	1.80	0.47
1:B:134:MET:CE	1:B:201:CYS:HB3	2.46	0.46
1:C:173:HIS:CD2	1:C:173(G):ASP:HA	2.51	0.46
1:C:29:TRP:CG	1:C:121:VAL:HB	2.51	0.46
1:C:50:GLN:HG3	1:C:111:PRO:HB3	1.98	0.46
1:B:38:TRP:CZ3	1:B:65:ARG:HG3	2.51	0.46
1:D:232:THR:HA	1:D:235:LEU:HD22	1.98	0.46
1:D:20:GLN:HB2	3:D:1065:HOH:O	2.16	0.46
1:B:29:TRP:CG	1:B:121:VAL:HB	2.51	0.46
1:D:152(A):PRO:HG3	1:D:153:PHE:CZ	2.50	0.45
1:A:163:MET:CE	1:A:171:LYS:NZ	2.80	0.45
1:A:152(A):PRO:HA	1:A:153:PHE:N	2.31	0.45
1:C:51:TRP:CZ3	1:C:107:GLU:HB2	2.51	0.45
1:D:166:HIS:CD2	1:D:167:ILE:HD12	2.51	0.45
1:C:79:GLN:HA	1:C:79:GLN:NE2	2.30	0.45
1:A:75:TYR:HB2	1:B:75:TYR:CE1	2.51	0.45
1:B:27:TRP:CD1	1:B:139:THR:HG21	2.52	0.45
1:A:55:ALA:O	1:A:58:CYS:HB2	2.16	0.45
1:A:50:GLN:HG3	1:A:111:PRO:CA	2.47	0.45
1:C:127:SER:O	1:C:129:THR:HG23	2.16	0.45
1:B:64:LEU:O	1:B:65:ARG:HG2	2.17	0.45
1:A:48:HIS:HD2	1:A:50:GLN:H	1.65	0.44
1:A:181:LEU:HD23	1:A:181:LEU:C	2.38	0.44
1:A:48:HIS:HB3	1:A:51:TRP:HB2	1.99	0.44
1:D:203:VAL:O	1:D:204:ASN:HB3	2.18	0.44
1:B:173(D):TYR:CZ	1:C:60(C):VAL:HA	2.53	0.44
1:C:79:GLN:HE21	1:C:79:GLN:HA	1.83	0.44
1:B:139:THR:HG22	1:B:157:GLN:HA	1.99	0.44
1:C:32:SER:HB2	1:C:141:TRP:CZ3	2.53	0.44
1:A:53:LEU:HD11	1:A:103:ILE:HD11	2.00	0.44
1:C:73:LEU:O	1:C:75:TYR:HD1	2.00	0.44
1:A:64:LEU:HD23	1:A:88:ILE:HD11	2.00	0.43
1:B:240:HIS:HB2	3:B:1034:HOH:O	2.18	0.43
1:C:53:LEU:HD11	1:C:103:ILE:HD11	2.00	0.43
1:C:44:GLY:HA2	1:C:196:GLY:O	2.18	0.43

Continued on next page...

Continued from previous page...

Atom-1	Atom-2	Interatomic distance (Å)	Clash overlap (Å)
1:D:129:THR:HG22	1:D:129:THR:O	2.18	0.43
1:D:30:GLN:NE2	1:D:139:THR:OG1	2.52	0.43
1:B:152(A):PRO:HA	1:B:153:PHE:N	2.34	0.43
1:B:51:TRP:CZ3	1:B:107:GLU:HB2	2.54	0.42
1:C:134:MET:CE	1:C:201:CYS:HB3	2.48	0.42
1:C:61:LEU:CD2	1:C:88:ILE:HG13	2.47	0.42
1:D:33:LEU:HB3	1:D:41:PHE:CZ	2.54	0.42
1:B:173(I):VAL:HG21	1:C:93:GLN:HA	2.01	0.42
1:B:30:GLN:HE22	1:B:198:PRO:HD2	1.84	0.42
1:A:69:ARG:HG2	1:A:69:ARG:NH1	2.33	0.42
1:B:73:LEU:HG	1:B:141:TRP:CD1	2.55	0.42
1:D:124:PRO:HA	1:D:125:PRO:HD3	1.88	0.42
1:A:94:PHE:HB2	1:A:101:ALA:O	2.20	0.42
1:B:144:VAL:O	1:B:145:ASP:HB2	2.19	0.42
1:C:134:MET:HA	1:C:135:PRO:HD3	1.94	0.42
1:D:68:LEU:O	1:D:69:ARG:C	2.58	0.41
1:A:163:MET:CE	1:A:171:LYS:HZ2	2.33	0.41
1:B:27:TRP:N	1:B:28:PRO:CD	2.83	0.41
1:B:61:LEU:N	1:B:61:LEU:HD12	2.35	0.41
1:D:188:ARG:HG2	1:D:188:ARG:NH1	2.34	0.41
1:B:240:HIS:CD2	3:B:1034:HOH:O	2.73	0.41
1:C:36:HIS:HB2	1:C:38:TRP:CH2	2.55	0.41
1:C:48:HIS:CD2	1:C:51:TRP:HD1	2.38	0.41
1:B:134:MET:HE1	1:B:201:CYS:HB3	2.03	0.41
1:A:232:THR:HG23	3:A:1065:HOH:O	2.19	0.41
1:D:225:PRO:HA	3:D:1029:HOH:O	2.20	0.41
1:D:242:VAL:HA	1:D:243:PRO:HD3	1.82	0.40
1:D:144:VAL:HG12	1:D:156:LYS:HE2	2.04	0.40

There are no symmetry-related clashes.

5.3 Torsion angles [i](#)

5.3.1 Protein backbone [i](#)

In the following table, the Percentiles column shows the percent Ramachandran outliers of the chain as a percentile score with respect to all X-ray entries followed by that with respect to entries of similar resolution.

The Analysed column shows the number of residues for which the backbone conformation was analysed, and the total number of residues.

Mol	Chain	Analysed	Favoured	Allowed	Outliers	Percentiles	
1	A	241/245 (98%)	218 (90%)	23 (10%)	0	100	100
1	B	241/245 (98%)	226 (94%)	15 (6%)	0	100	100
1	C	241/245 (98%)	227 (94%)	13 (5%)	1 (0%)	39	48
1	D	241/245 (98%)	222 (92%)	18 (8%)	1 (0%)	39	48
All	All	964/980 (98%)	893 (93%)	69 (7%)	2 (0%)	52	64

All (2) Ramachandran outliers are listed below:

Mol	Chain	Res	Type
1	C	38	TRP
1	D	243	PRO

5.3.2 Protein sidechains ⓘ

In the following table, the Percentiles column shows the percent sidechain outliers of the chain as a percentile score with respect to all X-ray entries followed by that with respect to entries of similar resolution.

The Analysed column shows the number of residues for which the sidechain conformation was analysed, and the total number of residues.

Mol	Chain	Analysed	Rotameric	Outliers	Percentiles	
1	A	208/210 (99%)	203 (98%)	5 (2%)	57	74
1	B	208/210 (99%)	201 (97%)	7 (3%)	44	59
1	C	208/210 (99%)	200 (96%)	8 (4%)	40	54
1	D	208/210 (99%)	200 (96%)	8 (4%)	40	54
All	All	832/840 (99%)	804 (97%)	28 (3%)	44	59

All (28) residues with a non-rotameric sidechain are listed below:

Mol	Chain	Res	Type
1	A	68	LEU
1	A	135	PRO
1	A	159	LYS
1	A	198	PRO
1	A	199	LEU
1	B	65	ARG
1	B	69	ARG
1	B	150	ARG
1	B	163	MET

Continued on next page...

Continued from previous page...

Mol	Chain	Res	Type
1	B	174	ARG
1	B	185	ASN
1	B	198	PRO
1	C	123	LEU
1	C	134	MET
1	C	150	ARG
1	C	174	ARG
1	C	182	CYS
1	C	185	ASN
1	C	198	PRO
1	C	202	LYS
1	D	87	ARG
1	D	110	GLU
1	D	113	LYS
1	D	128	GLU
1	D	174	ARG
1	D	181	LEU
1	D	235	LEU
1	D	244	LYS

Some sidechains can be flipped to improve hydrogen bonding and reduce clashes. All (28) such sidechains are listed below:

Mol	Chain	Res	Type
1	A	30	GLN
1	A	48	HIS
1	A	72	HIS
1	A	166	HIS
1	A	223	ASN
1	A	240	HIS
1	B	20	GLN
1	B	30	GLN
1	B	50	GLN
1	B	185	ASN
1	B	204	ASN
1	B	221(A)	GLN
1	B	240	HIS
1	C	30	GLN
1	C	36	HIS
1	C	48	HIS
1	C	79	GLN
1	C	119	HIS
1	C	146	ASN

Continued on next page...

Continued from previous page...

Mol	Chain	Res	Type
1	C	185	ASN
1	C	221(A)	GLN
1	C	223	ASN
1	D	30	GLN
1	D	48	HIS
1	D	71	GLN
1	D	79	GLN
1	D	119	HIS
1	D	223	ASN

5.3.3 RNA [i](#)

There are no RNA molecules in this entry.

5.4 Non-standard residues in protein, DNA, RNA chains [i](#)

There are no non-standard protein/DNA/RNA residues in this entry.

5.5 Carbohydrates [i](#)

There are no carbohydrates in this entry.

5.6 Ligand geometry [i](#)

4 ligands are modelled in this entry.

In the following table, the Counts columns list the number of bonds (or angles) for which Mogul statistics could be retrieved, the number of bonds (or angles) that are observed in the model and the number of bonds (or angles) that are defined in the chemical component dictionary. The Link column lists molecule types, if any, to which the group is linked. The Z score for a bond length (or angle) is the number of standard deviations the observed value is removed from the expected value. A bond length (or angle) with $|Z| > 2$ is considered an outlier worth inspection. RMSZ is the root-mean-square of all Z scores of the bond lengths (or angles).

Mol	Type	Chain	Res	Link	Bond lengths			Bond angles		
					Counts	RMSZ	$\# Z > 2$	Counts	RMSZ	$\# Z > 2$
2	C4A	A	999	1	35,41,41	3.06	16 (45%)	40,55,55	1.78	7 (17%)
2	C4A	B	998	1	35,41,41	3.09	16 (45%)	40,55,55	1.83	7 (17%)
2	C4A	C	997	1	35,41,41	3.08	16 (45%)	40,55,55	1.78	7 (17%)
2	C4A	D	996	1	35,41,41	3.11	16 (45%)	40,55,55	1.84	8 (20%)

In the following table, the Chirals column lists the number of chiral outliers, the number of chiral centers analysed, the number of these observed in the model and the number defined in the chemical component dictionary. Similar counts are reported in the Torsion and Rings columns. '-' means no outliers of that kind were identified.

Mol	Type	Chain	Res	Link	Chirals	Torsions	Rings
2	C4A	A	999	1	-	0/26/40/40	0/3/4/4
2	C4A	B	998	1	-	0/26/40/40	0/3/4/4
2	C4A	C	997	1	-	0/26/40/40	0/3/4/4
2	C4A	D	996	1	-	0/26/40/40	0/3/4/4

All (64) bond length outliers are listed below:

Mol	Chain	Res	Type	Atoms	Z	Observed(Å)	Ideal(Å)
2	B	998	C4A	C23-C26	-4.12	1.41	1.50
2	A	999	C4A	C23-C26	-4.01	1.41	1.50
2	D	996	C4A	C23-C26	-3.99	1.41	1.50
2	C	997	C4A	C23-C26	-3.99	1.41	1.50
2	B	998	C4A	C30-C31	-2.93	1.45	1.50
2	A	999	C4A	C30-C31	-2.88	1.45	1.50
2	D	996	C4A	C30-C31	-2.73	1.46	1.50
2	C	997	C4A	C30-C31	-2.66	1.46	1.50
2	C	997	C4A	C33-C32	-2.51	1.46	1.50
2	A	999	C4A	C33-C32	-2.51	1.46	1.50
2	D	996	C4A	C33-C32	-2.45	1.46	1.50
2	B	998	C4A	C33-C32	-2.44	1.46	1.50
2	A	999	C4A	C37-C31	2.11	1.43	1.39
2	B	998	C4A	C34-C32	2.22	1.43	1.39
2	D	996	C4A	C34-C32	2.31	1.43	1.39
2	C	997	C4A	C37-C31	2.34	1.43	1.39
2	A	999	C4A	C22-C21	2.36	1.43	1.38
2	B	998	C4A	C36-C35	2.36	1.44	1.38
2	C	997	C4A	C34-C32	2.40	1.43	1.39
2	C	997	C4A	C36-C35	2.43	1.44	1.38
2	B	998	C4A	C37-C31	2.45	1.43	1.39
2	B	998	C4A	C36-C37	2.47	1.44	1.38
2	B	998	C4A	C22-C21	2.47	1.43	1.38
2	A	999	C4A	C34-C32	2.48	1.44	1.39
2	B	998	C4A	C35-C34	2.51	1.44	1.38
2	D	996	C4A	C36-C37	2.52	1.44	1.38
2	A	999	C4A	C25-C24	2.54	1.43	1.38
2	D	996	C4A	C22-C21	2.57	1.43	1.38
2	C	997	C4A	C25-C24	2.59	1.43	1.38
2	C	997	C4A	C35-C34	2.61	1.44	1.38
2	A	999	C4A	C36-C35	2.61	1.44	1.38

Continued on next page...

Continued from previous page...

Mol	Chain	Res	Type	Atoms	Z	Observed(Å)	Ideal(Å)
2	C	997	C4A	C25-C20	2.62	1.44	1.38
2	D	996	C4A	C36-C35	2.63	1.44	1.38
2	A	999	C4A	C35-C34	2.63	1.44	1.38
2	B	998	C4A	C25-C20	2.64	1.44	1.38
2	D	996	C4A	C37-C31	2.64	1.44	1.39
2	C	997	C4A	C22-C21	2.65	1.43	1.38
2	A	999	C4A	C25-C20	2.66	1.44	1.38
2	A	999	C4A	C36-C37	2.68	1.44	1.38
2	C	997	C4A	C36-C37	2.72	1.44	1.38
2	B	998	C4A	C21-C20	2.73	1.44	1.38
2	D	996	C4A	C25-C20	2.76	1.44	1.38
2	D	996	C4A	C35-C34	2.76	1.44	1.38
2	B	998	C4A	C25-C24	2.79	1.43	1.38
2	C	997	C4A	C21-C20	2.83	1.44	1.38
2	C	997	C4A	C6-C13	2.91	1.59	1.53
2	A	999	C4A	C6-C13	2.92	1.59	1.53
2	A	999	C4A	C21-C20	2.97	1.45	1.38
2	D	996	C4A	C25-C24	3.00	1.44	1.38
2	D	996	C4A	C21-C20	3.08	1.45	1.38
2	D	996	C4A	C6-C13	3.12	1.59	1.53
2	B	998	C4A	C6-C13	3.27	1.60	1.53
2	A	999	C4A	C24-C23	3.46	1.45	1.39
2	D	996	C4A	C24-C23	3.57	1.45	1.39
2	C	997	C4A	C24-C23	3.58	1.45	1.39
2	B	998	C4A	C24-C23	3.61	1.45	1.39
2	B	998	C4A	C22-C23	3.64	1.45	1.39
2	C	997	C4A	C22-C23	3.73	1.45	1.39
2	A	999	C4A	C22-C23	3.75	1.45	1.39
2	D	996	C4A	C22-C23	3.95	1.46	1.39
2	A	999	C4A	O14-C13	13.54	1.43	1.22
2	D	996	C4A	O14-C13	13.74	1.43	1.22
2	C	997	C4A	O14-C13	13.77	1.43	1.22
2	B	998	C4A	O14-C13	13.81	1.43	1.22

All (29) bond angle outliers are listed below:

Mol	Chain	Res	Type	Atoms	Z	Observed(°)	Ideal(°)
2	B	998	C4A	O14-C13-C6	-5.30	110.68	119.69
2	C	997	C4A	O14-C13-C6	-5.23	110.79	119.69
2	D	996	C4A	O14-C13-C6	-5.10	111.01	119.69
2	A	999	C4A	O14-C13-C6	-5.08	111.05	119.69
2	D	996	C4A	O27-C26-N28	-2.45	118.01	122.44

Continued on next page...

Continued from previous page...

Mol	Chain	Res	Type	Atoms	Z	Observed(°)	Ideal(°)
2	C	997	C4A	C23-C26-N28	2.20	120.84	116.93
2	D	996	C4A	C6-N7-C8	2.27	127.26	121.12
2	C	997	C4A	C6-N7-C8	2.35	127.47	121.12
2	A	999	C4A	C23-C26-N28	2.35	121.11	116.93
2	B	998	C4A	O10-C8-N7	2.39	115.85	110.54
2	B	998	C4A	C23-C26-N28	2.60	121.56	116.93
2	A	999	C4A	C6-N7-C8	2.65	128.29	121.12
2	D	996	C4A	O10-C8-N7	2.80	116.76	110.54
2	B	998	C4A	C6-N7-C8	2.82	128.75	121.12
2	A	999	C4A	O10-C8-N7	2.84	116.83	110.54
2	A	999	C4A	C18-N38-C15	2.97	106.19	103.50
2	C	997	C4A	O10-C8-N7	2.98	117.14	110.54
2	D	996	C4A	C23-C26-N28	3.21	122.65	116.93
2	C	997	C4A	C18-N38-C15	3.31	106.50	103.50
2	D	996	C4A	C29-N28-C26	3.35	126.70	122.52
2	A	999	C4A	C29-N28-C26	3.52	126.92	122.52
2	B	998	C4A	C18-N38-C15	3.56	106.73	103.50
2	B	998	C4A	C29-N28-C26	3.59	127.00	122.52
2	D	996	C4A	C18-N38-C15	3.59	106.75	103.50
2	C	997	C4A	C29-N28-C26	4.04	127.57	122.52
2	C	997	C4A	C11-O10-C8	5.90	127.44	116.07
2	D	996	C4A	C11-O10-C8	6.08	127.78	116.07
2	B	998	C4A	C11-O10-C8	6.25	128.12	116.07
2	A	999	C4A	C11-O10-C8	6.32	128.25	116.07

There are no chirality outliers.

There are no torsion outliers.

There are no ring outliers.

2 monomers are involved in 2 short contacts:

Mol	Chain	Res	Type	Clashes	Symm-Clashes
2	B	998	C4A	1	0
2	D	996	C4A	1	0

5.7 Other polymers ⓘ

There are no such residues in this entry.

5.8 Polymer linkage issues ⓘ

There are no chain breaks in this entry.

6 Fit of model and data [i](#)

6.1 Protein, DNA and RNA chains [i](#)

In the following table, the column labelled ‘#RSRZ> 2’ contains the number (and percentage) of RSRZ outliers, followed by percent RSRZ outliers for the chain as percentile scores relative to all X-ray entries and entries of similar resolution. The OWAB column contains the minimum, median, 95th percentile and maximum values of the occupancy-weighted average B-factor per residue. The column labelled ‘Q< 0.9’ lists the number of (and percentage) of residues with an average occupancy less than 0.9.

Mol	Chain	Analysed	<RSRZ>	#RSRZ>2	OWAB(Å ²)	Q<0.9
1	A	243/245 (99%)	-0.61	1 (0%) 93 95	17, 27, 50, 60	0
1	B	243/245 (99%)	-0.71	0 100 100	12, 24, 43, 65	0
1	C	243/245 (99%)	-0.61	0 100 100	16, 27, 49, 57	0
1	D	243/245 (99%)	-0.68	1 (0%) 93 95	13, 24, 43, 63	0
All	All	972/980 (99%)	-0.65	2 (0%) 95 97	12, 26, 49, 65	0

All (2) RSRZ outliers are listed below:

Mol	Chain	Res	Type	RSRZ
1	D	133	GLY	3.4
1	A	204	ASN	2.1

6.2 Non-standard residues in protein, DNA, RNA chains [i](#)

There are no non-standard protein/DNA/RNA residues in this entry.

6.3 Carbohydrates [i](#)

There are no carbohydrates in this entry.

6.4 Ligands [i](#)

In the following table, the Atoms column lists the number of modelled atoms in the group and the number defined in the chemical component dictionary. LLDF column lists the quality of electron density of the group with respect to its neighbouring residues in protein, DNA or RNA chains. The B-factors column lists the minimum, median, 95th percentile and maximum values of B factors of atoms in the group. The column labelled ‘Q< 0.9’ lists the number of atoms with occupancy less than 0.9.

Mol	Type	Chain	Res	Atoms	RSCC	RSR	LLDF	B-factors(\AA^2)	Q<0.9
2	C4A	B	998	38/38	0.88	0.17	5.00	29,49,54,55	0
2	C4A	C	997	38/38	0.89	0.15	3.81	38,53,57,58	0
2	C4A	D	996	38/38	0.88	0.16	3.56	37,48,51,52	0
2	C4A	A	999	38/38	0.92	0.13	2.53	33,45,49,51	0

6.5 Other polymers [i](#)

There are no such residues in this entry.