



# Full wwPDB X-ray Structure Validation Report ⓘ

Feb 1, 2016 – 02:10 AM GMT

PDB ID : 2FZH  
Title : New Insights into Dihydrofolate Reductase Interactions: Analysis of Pneumocystis carinii and Mouse DHFR Complexes with NADPH and Two Highly Potent Trimethoprim Derivatives  
Authors : Cody, V.; Pace, J.; Chisum, K.; Rosowsky, A.  
Deposited on : 2006-02-09  
Resolution : 2.10 Å(reported)

This is a Full wwPDB X-ray Structure Validation Report for a publicly released PDB entry.  
We welcome your comments at [validation@mail.wwpdb.org](mailto:validation@mail.wwpdb.org)  
A user guide is available at  
<http://wwpdb.org/validation/2016/XrayValidationReportHelp>  
with specific help available everywhere you see the ⓘ symbol.

---

The following versions of software and data (see [references ⓘ](#)) were used in the production of this report:

MolProbity : 4.02b-467  
Mogul : 1.7 (RC4), CSD as536be (2015)  
Xtriage (Phenix) : 1.9-1692  
EDS : rb-20026688  
Percentile statistics : 20151230.v01 (using entries in the PDB archive December 30th 2015)  
Refmac : 5.8.0135  
CCP4 : 6.5.0  
Ideal geometry (proteins) : Engh & Huber (2001)  
Ideal geometry (DNA, RNA) : Parkinson et al. (1996)  
Validation Pipeline (wwPDB-VP) : trunk26865

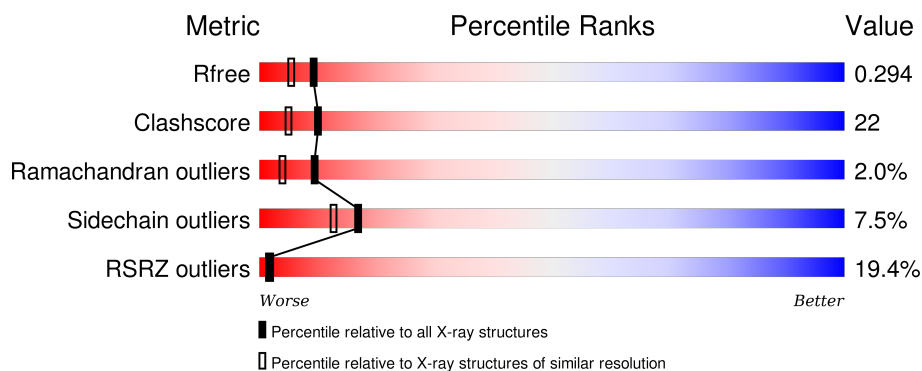
# 1 Overall quality at a glance

The following experimental techniques were used to determine the structure:

## *X-RAY DIFFRACTION*

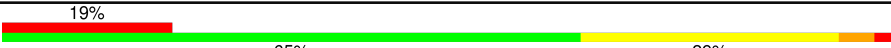
The reported resolution of this entry is 2.10 Å.

Percentile scores (ranging between 0-100) for global validation metrics of the entry are shown in the following graphic. The table shows the number of entries on which the scores are based.



Metric	Whole archive (#Entries)	Similar resolution (#Entries, resolution range(Å))
$R_{free}$	91344	3939 (2.10-2.10)
Clashscore	102246	4460 (2.10-2.10)
Ramachandran outliers	100387	4413 (2.10-2.10)
Sidechain outliers	100360	4414 (2.10-2.10)
RSRZ outliers	91569	3948 (2.10-2.10)

The table below summarises the geometric issues observed across the polymeric chains and their fit to the electron density. The red, orange, yellow and green segments on the lower bar indicate the fraction of residues that contain outliers for  $\geq 3$ , 2, 1 and 0 types of geometric quality criteria. A grey segment represents the fraction of residues that are not modelled. The numeric value for each fraction is indicated below the corresponding segment, with a dot representing fractions  $\leq 5\%$ . The upper red bar (where present) indicates the fraction of residues that have poor fit to the electron density. The numeric value is given above the bar.

Mol	Chain	Length	Quality of chain
1	A	206	

## 2 Entry composition [i](#)

There are 4 unique types of molecules in this entry. The entry contains 1853 atoms, of which 0 are hydrogens and 0 are deuteriums.

In the tables below, the ZeroOcc column contains the number of atoms modelled with zero occupancy, the AltConf column contains the number of residues with at least one atom in alternate conformation and the Trace column contains the number of residues modelled with at most 2 atoms.

- Molecule 1 is a protein called Dihydrofolate reductase.

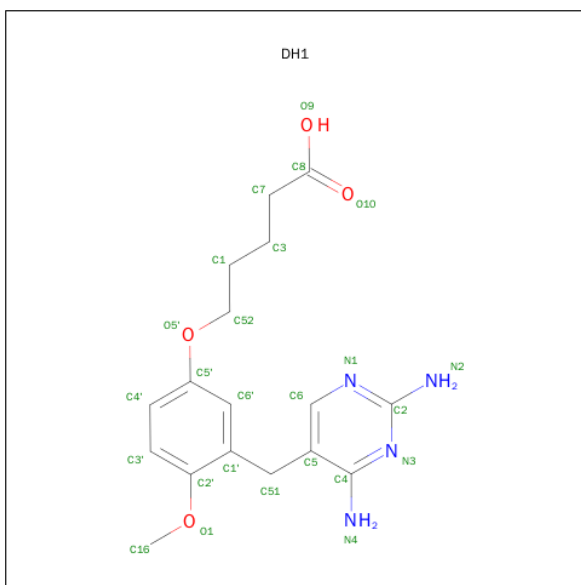
Mol	Chain	Residues	Atoms					ZeroOcc	AltConf	Trace
			Total	C	N	O	S			
1	A	206	1686	1086	288	305	7	0	0	0

- Molecule 2 is NADPH DIHYDRO-NICOTINAMIDE-ADENINE-DINUCLEOTIDE PHOSPHATE (three-letter code: NDP) (formula:  $C_{21}H_{30}N_7O_{17}P_3$ ).



Mol	Chain	Residues	Atoms					ZeroOcc	AltConf
			Total	C	N	O	P		
2	A	1	48	21	7	17	3	0	0

- Molecule 3 is 2,4-DIAMINO-5-[2-METHOXY-5-(4-CARBOXYBUTYLOXY)BENZYL]PYRIMIDINE (three-letter code: DH1) (formula:  $C_{17}H_{22}N_4O_4$ ).



Mol	Chain	Residues	Atoms				ZeroOcc	AltConf
3	A	1	Total	C	N	O	0	0
			25	17	4	4		

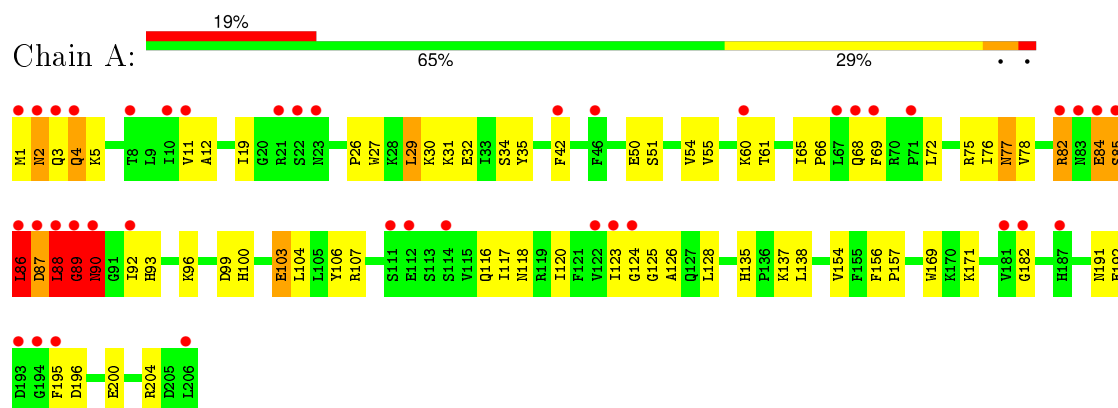
- Molecule 4 is water.

Mol	Chain	Residues	Atoms	ZeroOcc	AltConf
4	A	94	Total O 94 94	0	0

### 3 Residue-property plots

These plots are drawn for all protein, RNA and DNA chains in the entry. The first graphic for a chain summarises the proportions of errors displayed in the second graphic. The second graphic shows the sequence view annotated by issues in geometry and electron density. Residues are color-coded according to the number of geometric quality criteria for which they contain at least one outlier: green = 0, yellow = 1, orange = 2 and red = 3 or more. A red dot above a residue indicates a poor fit to the electron density ( $RSRZ > 2$ ). Stretches of 2 or more consecutive residues without any outlier are shown as a green connector. Residues present in the sample, but not in the model, are shown in grey.

- Molecule 1: Dihydrofolate reductase



## 4 Data and refinement statistics

Property	Value	Source
Space group	P 1 21 1	Depositor
Cell constants a, b, c, $\alpha$ , $\beta$ , $\gamma$	36.87Å 42.92Å 60.92Å 90.00° 95.18° 90.00°	Depositor
Resolution (Å)	25.00 – 2.10 24.77 – 2.00	Depositor EDS
% Data completeness (in resolution range)	10.0 (25.00-2.10) 98.1 (24.77-2.00)	Depositor EDS
$R_{merge}$	0.11	Depositor
$R_{sym}$	(Not available)	Depositor
$\langle I/\sigma(I) \rangle$ <sup>1</sup>	0.75 (at 1.99Å)	Xtriage
Refinement program	CNS	Depositor
R, $R_{free}$	0.246 , 0.295 0.246 , 0.294	Depositor DCC
$R_{free}$ test set	1160 reflections (10.33%)	DCC
Wilson B-factor (Å <sup>2</sup> )	29.7	Xtriage
Anisotropy	0.047	Xtriage
Bulk solvent $k_{sol}$ (e/Å <sup>3</sup> ), $B_{sol}$ (Å <sup>2</sup> )	0.32 , 48.7	EDS
Estimated twinning fraction	No twinning to report.	Xtriage
L-test for twinning <sup>2</sup>	$\langle  L  \rangle = 0.49$ , $\langle L^2 \rangle = 0.32$	Xtriage
Outliers	0 of 12754 reflections	Xtriage
$F_o, F_c$ correlation	0.93	EDS
Total number of atoms	1853	wwPDB-VP
Average B, all atoms (Å <sup>2</sup> )	32.0	wwPDB-VP

Xtriage's analysis on translational NCS is as follows: *The largest off-origin peak in the Patterson function is 9.45% of the height of the origin peak. No significant pseudotranslation is detected.*

<sup>1</sup>Intensities estimated from amplitudes.

<sup>2</sup>Theoretical values of  $\langle |L| \rangle$ ,  $\langle L^2 \rangle$  for acentric reflections are 0.5, 0.375 respectively for untwinned datasets, and 0.333, 0.2 for perfectly twinned datasets.

## 5 Model quality

### 5.1 Standard geometry

Bond lengths and bond angles in the following residue types are not validated in this section: NDP, DH1

The Z score for a bond length (or angle) is the number of standard deviations the observed value is removed from the expected value. A bond length (or angle) with  $|Z| > 5$  is considered an outlier worth inspection. RMSZ is the root-mean-square of all Z scores of the bond lengths (or angles).

Mol	Chain	Bond lengths		Bond angles	
		RMSZ	$\# Z  > 5$	RMSZ	$\# Z  > 5$
1	A	0.58	2/1728 (0.1%)	0.77	4/2330 (0.2%)

Chiral center outliers are detected by calculating the chiral volume of a chiral center and verifying if the center is modelled as a planar moiety or with the opposite hand. A planarity outlier is detected by checking planarity of atoms in a peptide group, atoms in a mainchain group or atoms of a sidechain that are expected to be planar.

Mol	Chain	#Chirality outliers	#Planarity outliers
1	A	0	1

All (2) bond length outliers are listed below:

Mol	Chain	Res	Type	Atoms	Z	Observed(Å)	Ideal(Å)
1	A	89	GLY	C-N	9.28	1.55	1.34
1	A	87	ASP	N-CA	-5.58	1.35	1.46

All (4) bond angle outliers are listed below:

Mol	Chain	Res	Type	Atoms	Z	Observed(°)	Ideal(°)
1	A	89	GLY	CA-C-N	-9.34	96.66	117.20
1	A	82	ARG	NE-CZ-NH2	7.51	124.06	120.30
1	A	89	GLY	O-C-N	-6.95	111.58	122.70
1	A	86	LEU	O-C-N	5.32	131.22	122.70

There are no chirality outliers.

All (1) planarity outliers are listed below:

Mol	Chain	Res	Type	Group
1	A	89	GLY	Mainchain

## 5.2 Too-close contacts ⓘ

In the following table, the Non-H and H(model) columns list the number of non-hydrogen atoms and hydrogen atoms in the chain respectively. The H(added) column lists the number of hydrogen atoms added and optimized by MolProbity. The Clashes column lists the number of clashes within the asymmetric unit, whereas Symm-Clashes lists symmetry related clashes.

Mol	Chain	Non-H	H(model)	H(added)	Clashes	Symm-Clashes
1	A	1686	0	1693	76	0
2	A	48	0	25	9	0
3	A	25	0	21	0	0
4	A	94	0	0	2	0
All	All	1853	0	1739	77	0

The all-atom clashscore is defined as the number of clashes found per 1000 atoms (including hydrogen atoms). The all-atom clashscore for this structure is 22.

All (77) close contacts within the same asymmetric unit are listed below, sorted by their clash magnitude.

Atom-1	Atom-2	Interatomic distance (Å)	Clash overlap (Å)
1:A:86:LEU:HD12	1:A:86:LEU:O	1.17	1.30
1:A:89:GLY:O	1:A:92:ILE:CB	1.78	1.18
1:A:89:GLY:O	1:A:92:ILE:N	1.81	1.14
1:A:89:GLY:O	1:A:92:ILE:HB	1.25	1.03
1:A:86:LEU:O	1:A:86:LEU:CD1	2.08	1.00
1:A:87:ASP:O	1:A:88:LEU:CD2	2.14	0.95
1:A:89:GLY:O	1:A:92:ILE:CA	2.17	0.91
1:A:86:LEU:HD12	1:A:86:LEU:C	1.93	0.89
1:A:87:ASP:O	1:A:88:LEU:HD23	1.79	0.81
1:A:87:ASP:O	1:A:88:LEU:HB2	1.86	0.76
1:A:135:HIS:HD2	1:A:137:LYS:H	1.30	0.76
1:A:90:ASN:O	1:A:92:ILE:HD12	1.89	0.73
1:A:86:LEU:C	1:A:86:LEU:CD1	2.53	0.72
1:A:19:ILE:O	2:A:207:NDP:H2N	1.90	0.72
1:A:54:VAL:HG22	1:A:76:ILE:HB	1.71	0.71
1:A:87:ASP:O	1:A:88:LEU:CB	2.41	0.67
1:A:89:GLY:CA	1:A:92:ILE:HB	2.22	0.65
1:A:100:HIS:O	1:A:103:GLU:HG3	1.98	0.64
1:A:87:ASP:O	1:A:88:LEU:HD22	1.94	0.64
1:A:135:HIS:CD2	1:A:137:LYS:H	2.14	0.63
1:A:4:GLN:H	1:A:4:GLN:NE2	1.95	0.63
1:A:77:ASN:N	1:A:77:ASN:HD22	1.97	0.62
1:A:82:ARG:HB2	2:A:207:NDP:C2A	2.30	0.62

*Continued on next page...*



*Continued from previous page...*

Atom-1	Atom-2	Interatomic distance (Å)	Clash overlap (Å)
1:A:169:TRP:CH2	1:A:204:ARG:HG2	2.34	0.62
1:A:99:ASP:OD1	1:A:135:HIS:HE1	1.83	0.62
1:A:90:ASN:C	1:A:92:ILE:HD12	2.22	0.60
1:A:125:GLY:HA3	2:A:207:NDP:PA	2.42	0.60
1:A:82:ARG:HB2	2:A:207:NDP:H2A	1.83	0.59
1:A:54:VAL:HB	1:A:120:ILE:HD13	1.85	0.58
1:A:104:LEU:CD1	1:A:107:ARG:HH11	2.17	0.58
1:A:84:GLU:OE2	1:A:96:LYS:HD3	2.04	0.58
1:A:55:VAL:HG21	1:A:72:LEU:HD12	1.86	0.57
1:A:5:LYS:HE3	1:A:118:ASN:O	2.04	0.56
1:A:90:ASN:C	1:A:92:ILE:H	2.09	0.56
1:A:124:GLY:HA2	2:A:207:NDP:H5N	1.88	0.56
1:A:89:GLY:HA3	1:A:92:ILE:CB	2.35	0.55
1:A:125:GLY:HA3	2:A:207:NDP:O1A	2.06	0.55
1:A:78:VAL:HG22	1:A:93:HIS:HB2	1.89	0.54
1:A:29:LEU:HD12	1:A:192:GLU:HB3	1.90	0.53
1:A:104:LEU:HD12	1:A:107:ARG:HH11	1.74	0.52
1:A:96:LYS:HG2	4:A:254:HOH:O	2.09	0.52
1:A:2:ASN:HA	1:A:106:TYR:CD2	2.45	0.52
1:A:72:LEU:HB3	1:A:75:ARG:CZ	2.41	0.51
1:A:90:ASN:C	1:A:92:ILE:N	2.65	0.50
1:A:85:SER:OG	1:A:86:LEU:N	2.45	0.49
1:A:99:ASP:O	1:A:103:GLU:HG2	2.13	0.49
1:A:42:PHE:CE2	1:A:182:GLY:HA3	2.48	0.48
1:A:171:LYS:NZ	1:A:200:GLU:OE2	2.29	0.48
1:A:90:ASN:C	1:A:92:ILE:CD1	2.80	0.47
1:A:55:VAL:HB	1:A:123:ILE:HD13	1.96	0.47
1:A:60:LYS:HB2	2:A:207:NDP:O5B	2.14	0.47
1:A:26:PRO:HG2	1:A:27:TRP:CE3	2.48	0.47
1:A:61:THR:O	1:A:65:ILE:HG13	2.16	0.46
1:A:3:GLN:HB3	4:A:246:HOH:O	2.15	0.46
1:A:117:ILE:HG21	1:A:120:ILE:HD11	1.99	0.45
1:A:4:GLN:H	1:A:4:GLN:CD	2.20	0.45
1:A:89:GLY:O	1:A:90:ASN:C	2.54	0.45
1:A:82:ARG:CZ	2:A:207:NDP:N1A	2.80	0.44
1:A:88:LEU:HA	1:A:88:LEU:HD13	1.71	0.44
1:A:51:SER:HA	1:A:116:GLN:O	2.17	0.44
1:A:72:LEU:HB3	1:A:75:ARG:NH2	2.33	0.44
1:A:66:PRO:HB2	1:A:69:PHE:CD2	2.53	0.43
1:A:31:LYS:HB2	1:A:192:GLU:OE1	2.19	0.43
1:A:156:PHE:CD1	1:A:157:PRO:HD2	2.54	0.42

*Continued on next page...*

Continued from previous page...

Atom-1	Atom-2	Interatomic distance (Å)	Clash overlap (Å)
1:A:3:GLN:HB2	1:A:137:LYS:HD2	2.01	0.42
1:A:156:PHE:CG	1:A:157:PRO:HD2	2.55	0.42
1:A:1:MET:HA	1:A:4:GLN:HE22	1.85	0.42
1:A:191:ASN:HA	1:A:195:PHE:O	2.20	0.42
1:A:126:ALA:HB2	1:A:154:VAL:CG1	2.50	0.42
1:A:11:VAL:HG22	1:A:12:ALA:N	2.35	0.41
1:A:19:ILE:HD11	1:A:126:ALA:HB2	2.02	0.41
1:A:32:GLU:O	1:A:35:TYR:HB3	2.20	0.41
1:A:104:LEU:HD13	1:A:107:ARG:HH11	1.85	0.41
1:A:4:GLN:NE2	1:A:4:GLN:N	2.65	0.41
1:A:30:LYS:HB3	1:A:30:LYS:NZ	2.36	0.40
2:A:207:NDP:H52A	2:A:207:NDP:H8A	2.03	0.40
1:A:100:HIS:HA	1:A:103:GLU:CG	2.51	0.40

There are no symmetry-related clashes.

## 5.3 Torsion angles ⓘ

### 5.3.1 Protein backbone ⓘ

In the following table, the Percentiles column shows the percent Ramachandran outliers of the chain as a percentile score with respect to all X-ray entries followed by that with respect to entries of similar resolution.

The Analysed column shows the number of residues for which the backbone conformation was analysed, and the total number of residues.

Mol	Chain	Analysed	Favoured	Allowed	Outliers	Percentiles
1	A	204/206 (99%)	186 (91%)	14 (7%)	4 (2%)	9 4

All (4) Ramachandran outliers are listed below:

Mol	Chain	Res	Type
1	A	88	LEU
1	A	84	GLU
1	A	90	ASN
1	A	85	SER

### 5.3.2 Protein sidechains ⓘ

In the following table, the Percentiles column shows the percent sidechain outliers of the chain as a percentile score with respect to all X-ray entries followed by that with respect to entries of similar resolution.

The Analysed column shows the number of residues for which the sidechain conformation was analysed, and the total number of residues.

Mol	Chain	Analysed	Rotameric	Outliers	Percentiles	
1	A	187/187 (100%)	173 (92%)	14 (8%)	17	13

All (14) residues with a non-rotameric sidechain are listed below:

Mol	Chain	Res	Type
1	A	2	ASN
1	A	4	GLN
1	A	29	LEU
1	A	34	SER
1	A	50	GLU
1	A	68	GLN
1	A	77	ASN
1	A	86	LEU
1	A	88	LEU
1	A	90	ASN
1	A	103	GLU
1	A	128	LEU
1	A	138	LEU
1	A	196	ASP

Some sidechains can be flipped to improve hydrogen bonding and reduce clashes. All (9) such sidechains are listed below:

Mol	Chain	Res	Type
1	A	2	ASN
1	A	4	GLN
1	A	23	ASN
1	A	68	GLN
1	A	90	ASN
1	A	100	HIS
1	A	118	ASN
1	A	135	HIS
1	A	187	HIS

### 5.3.3 RNA ⓘ

There are no RNA molecules in this entry.

## 5.4 Non-standard residues in protein, DNA, RNA chains ⓘ

There are no non-standard protein/DNA/RNA residues in this entry.

## 5.5 Carbohydrates ⓘ

There are no carbohydrates in this entry.

## 5.6 Ligand geometry ⓘ

2 ligands are modelled in this entry.

In the following table, the Counts columns list the number of bonds (or angles) for which Mogul statistics could be retrieved, the number of bonds (or angles) that are observed in the model and the number of bonds (or angles) that are defined in the chemical component dictionary. The Link column lists molecule types, if any, to which the group is linked. The Z score for a bond length (or angle) is the number of standard deviations the observed value is removed from the expected value. A bond length (or angle) with  $|Z| > 2$  is considered an outlier worth inspection. RMSZ is the root-mean-square of all Z scores of the bond lengths (or angles).

Mol	Type	Chain	Res	Link	Bond lengths			Bond angles		
					Counts	RMSZ	$\# Z  > 2$	Counts	RMSZ	$\# Z  > 2$
2	NDP	A	207	-	42,52,52	2.57	19 (45%)	55,80,80	2.99	24 (43%)
3	DH1	A	208	-	23,26,26	2.07	6 (26%)	31,34,34	1.93	8 (25%)

In the following table, the Chirals column lists the number of chiral outliers, the number of chiral centers analysed, the number of these observed in the model and the number defined in the chemical component dictionary. Similar counts are reported in the Torsion and Rings columns. '-' means no outliers of that kind were identified.

Mol	Type	Chain	Res	Link	Chirals	Torsions	Rings
2	NDP	A	207	-	-	0/30/77/77	0/5/5/5
3	DH1	A	208	-	-	0/12/14/14	0/2/2/2

All (25) bond length outliers are listed below:

Mol	Chain	Res	Type	Atoms	Z	Observed(Å)	Ideal(Å)
2	A	207	NDP	O5D-C5D	-5.16	1.23	1.44

*Continued on next page...*

*Continued from previous page...*

Mol	Chain	Res	Type	Atoms	Z	Observed(Å)	Ideal(Å)
2	A	207	NDP	PA-O1A	-5.09	1.32	1.51
2	A	207	NDP	PN-O1N	-4.27	1.35	1.51
2	A	207	NDP	PA-O2A	-4.11	1.37	1.54
2	A	207	NDP	PN-O2N	-3.63	1.39	1.54
2	A	207	NDP	C8A-N7A	-3.16	1.28	1.34
2	A	207	NDP	O3B-C3B	-2.79	1.36	1.43
2	A	207	NDP	P2B-O2B	-2.63	1.52	1.60
2	A	207	NDP	P2B-O2X	-2.57	1.45	1.54
2	A	207	NDP	C1D-N1N	2.02	1.52	1.46
2	A	207	NDP	C6N-C5N	2.08	1.37	1.33
2	A	207	NDP	O4D-C1D	2.13	1.47	1.42
3	A	208	DH1	C4'-C3'	2.34	1.43	1.38
3	A	208	DH1	O1-C2'	2.37	1.40	1.37
3	A	208	DH1	C6-C5	2.53	1.43	1.37
2	A	207	NDP	C6N-N1N	2.62	1.45	1.37
2	A	207	NDP	C3D-C4D	2.76	1.60	1.53
2	A	207	NDP	C4A-N3A	3.43	1.40	1.35
3	A	208	DH1	C6'-C5'	3.62	1.45	1.38
2	A	207	NDP	O4B-C1B	3.95	1.46	1.41
3	A	208	DH1	C2-N2	3.98	1.42	1.34
2	A	207	NDP	C2A-N1A	4.26	1.42	1.33
2	A	207	NDP	O4D-C4D	4.52	1.55	1.45
3	A	208	DH1	C4-N3	5.06	1.42	1.35
2	A	207	NDP	C2A-N3A	5.29	1.41	1.32

All (32) bond angle outliers are listed below:

Mol	Chain	Res	Type	Atoms	Z	Observed(°)	Ideal(°)
2	A	207	NDP	N3A-C2A-N1A	-14.02	118.16	128.89
3	A	208	DH1	N1-C2-N3	-5.26	120.29	125.78
2	A	207	NDP	C4N-C5N-C6N	-4.81	114.64	122.58
2	A	207	NDP	O4B-C1B-C2B	-3.97	99.42	106.60
2	A	207	NDP	O3B-C3B-C4B	-3.73	99.87	111.05
2	A	207	NDP	C3N-C2N-N1N	-3.68	117.87	123.14
2	A	207	NDP	C3B-C2B-C1B	-3.66	95.66	102.73
2	A	207	NDP	C4D-O4D-C1D	-3.08	102.73	109.52
2	A	207	NDP	C1D-N1N-C2N	-2.86	115.92	120.91
2	A	207	NDP	C3D-C2D-C1D	-2.76	95.86	101.40
2	A	207	NDP	O4B-C4B-C3B	-2.48	100.14	105.15
3	A	208	DH1	O1-C2'-C3'	-2.41	120.29	124.35
3	A	208	DH1	C51-C5-C4	-2.30	119.27	122.21
2	A	207	NDP	O4B-C4B-C5B	-2.15	101.64	109.32

*Continued on next page...*

*Continued from previous page...*

Mol	Chain	Res	Type	Atoms	Z	Observed(°)	Ideal(°)
2	A	207	NDP	O3-PA-O5B	-2.01	97.61	102.94
2	A	207	NDP	O2B-C2B-C3B	2.03	119.40	111.51
2	A	207	NDP	O2D-C2D-C3D	2.06	118.54	111.83
3	A	208	DH1	C51-C5-C6	2.07	124.78	121.72
2	A	207	NDP	PN-O3-PA	2.10	138.64	132.73
2	A	207	NDP	C4A-C5A-N7A	2.34	111.63	109.48
2	A	207	NDP	C6N-N1N-C2N	2.52	125.01	118.52
2	A	207	NDP	O7N-C7N-N7N	2.65	129.36	122.76
3	A	208	DH1	O1-C2'-C1'	3.24	119.99	115.83
2	A	207	NDP	O2X-P2B-O1X	3.25	121.05	110.58
3	A	208	DH1	C2-N3-C4	3.52	121.05	117.04
3	A	208	DH1	N2-C2-N1	3.62	120.66	117.39
2	A	207	NDP	O3D-C3D-C4D	3.67	122.06	111.05
3	A	208	DH1	C6-N1-C2	4.10	121.71	116.05
2	A	207	NDP	O4B-C1B-N9A	4.18	116.85	108.10
2	A	207	NDP	C4B-O4B-C1B	4.32	114.47	109.72
2	A	207	NDP	C5N-C4N-C3N	5.14	126.68	112.52
2	A	207	NDP	P2B-O2B-C2B	5.43	134.58	121.56

There are no chirality outliers.

There are no torsion outliers.

There are no ring outliers.

1 monomer is involved in 9 short contacts:

Mol	Chain	Res	Type	Clashes	Symm-Clashes
2	A	207	NDP	9	0

## 5.7 Other polymers [i](#)

There are no such residues in this entry.

## 5.8 Polymer linkage issues [i](#)

There are no chain breaks in this entry.

## 6 Fit of model and data ⓘ

### 6.1 Protein, DNA and RNA chains ⓘ

In the following table, the column labelled ‘#RSRZ> 2’ contains the number (and percentage) of RSRZ outliers, followed by percent RSRZ outliers for the chain as percentile scores relative to all X-ray entries and entries of similar resolution. The OWAB column contains the minimum, median, 95<sup>th</sup> percentile and maximum values of the occupancy-weighted average B-factor per residue. The column labelled ‘Q< 0.9’ lists the number of (and percentage) of residues with an average occupancy less than 0.9.

Mol	Chain	Analysed	<RSRZ>	#RSRZ>2	OWAB(Å <sup>2</sup> )	Q<0.9
1	A	206/206 (100%)	1.60	40 (19%) <b>1</b> <b>2</b>	15, 29, 58, 82	7 (3%)

All (40) RSRZ outliers are listed below:

Mol	Chain	Res	Type	RSRZ
1	A	1	MET	13.7
1	A	89	GLY	13.0
1	A	87	ASP	12.3
1	A	88	LEU	11.0
1	A	3	GLN	9.8
1	A	86	LEU	9.8
1	A	195	PHE	9.1
1	A	90	ASN	7.8
1	A	83	ASN	7.0
1	A	2	ASN	6.9
1	A	84	GLU	6.8
1	A	82	ARG	6.5
1	A	85	SER	6.2
1	A	114	SER	5.9
1	A	4	GLN	5.7
1	A	182	GLY	4.5
1	A	112	GLU	4.1
1	A	67	LEU	4.1
1	A	69	PHE	4.0
1	A	193	ASP	3.8
1	A	124	GLY	3.7
1	A	10	ILE	3.5
1	A	92	ILE	3.5
1	A	11	VAL	3.3
1	A	23	ASN	3.2
1	A	60	LYS	3.2
1	A	22	SER	3.1

*Continued on next page...*

*Continued from previous page...*

Mol	Chain	Res	Type	RSRZ
1	A	46	PHE	3.0
1	A	194	GLY	2.6
1	A	187	HIS	2.5
1	A	111	SER	2.5
1	A	123	ILE	2.4
1	A	68	GLN	2.4
1	A	122	VAL	2.4
1	A	42	PHE	2.3
1	A	71	PRO	2.1
1	A	181	VAL	2.1
1	A	206	LEU	2.1
1	A	8	THR	2.0
1	A	21	ARG	2.0

## 6.2 Non-standard residues in protein, DNA, RNA chains [i](#)

There are no non-standard protein/DNA/RNA residues in this entry.

## 6.3 Carbohydrates [i](#)

There are no carbohydrates in this entry.

## 6.4 Ligands [i](#)

In the following table, the Atoms column lists the number of modelled atoms in the group and the number defined in the chemical component dictionary. LLDF column lists the quality of electron density of the group with respect to its neighbouring residues in protein, DNA or RNA chains. The B-factors column lists the minimum, median, 95<sup>th</sup> percentile and maximum values of B factors of atoms in the group. The column labelled 'Q< 0.9' lists the number of atoms with occupancy less than 0.9.

Mol	Type	Chain	Res	Atoms	RSCC	RSR	LLDF	B-factors( $\text{\AA}^2$ )	Q<0.9
3	DH1	A	208	25/25	0.83	0.18	-0.26	18,25,27,29	0
2	NDP	A	207	48/48	0.88	0.15	-0.75	18,28,34,36	0

## 6.5 Other polymers [i](#)

There are no such residues in this entry.