



wwPDB X-ray Structure Validation Summary Report ⓘ

Feb 1, 2016 – 04:45 PM GMT

PDB ID : 4G1Q
Title : Crystal structure of HIV-1 reverse transcriptase (RT) in complex with
Rilpivirine (TMC278, Edurant), a non-nucleoside rt-inhibiting drug
Authors : Bauman, J.D.; Patel D.; Das, K.; Arnold E.
Deposited on : 2012-07-11
Resolution : 1.51 Å(reported)

This is a wwPDB X-ray Structure Validation Summary Report for a publicly released PDB entry.
We welcome your comments at validation@mail.wwpdb.org
A user guide is available at
<http://wwpdb.org/validation/2016/XrayValidationReportHelp>
with specific help available everywhere you see the ⓘ symbol.

The following versions of software and data (see [references ⓘ](#)) were used in the production of this report:

MolProbity : 4.02b-467
Mogul : 1.7 (RC4), CSD as536be (2015)
Xtriage (Phenix) : 1.9-1692
EDS : rb-20026688
Percentile statistics : 20151230.v01 (using entries in the PDB archive December 30th 2015)
Refmac : 5.8.0135
CCP4 : 6.5.0
Ideal geometry (proteins) : Engh & Huber (2001)
Ideal geometry (DNA, RNA) : Parkinson et al. (1996)
Validation Pipeline (wwPDB-VP) : trunk26865

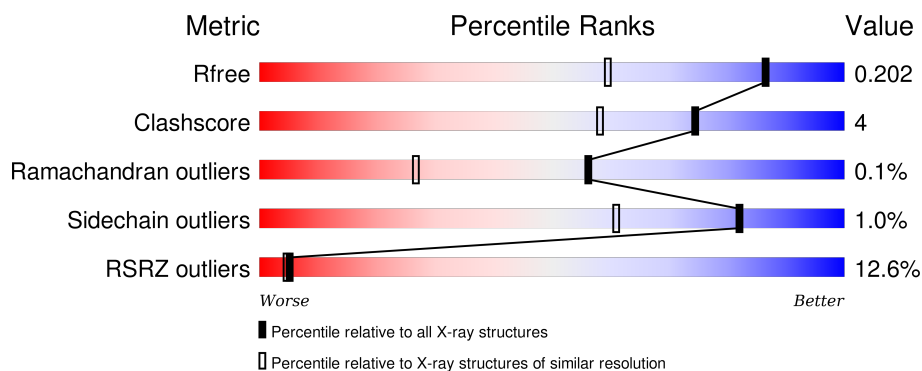
1 Overall quality at a glance ⓘ

The following experimental techniques were used to determine the structure:

X-RAY DIFFRACTION

The reported resolution of this entry is 1.51 Å.

Percentile scores (ranging between 0-100) for global validation metrics of the entry are shown in the following graphic. The table shows the number of entries on which the scores are based.



Metric	Whole archive (#Entries)	Similar resolution (#Entries, resolution range(Å))
R_{free}	91344	2658 (1.54-1.50)
Clashscore	102246	2887 (1.54-1.50)
Ramachandran outliers	100387	2818 (1.54-1.50)
Sidechain outliers	100360	2816 (1.54-1.50)
RSRZ outliers	91569	2660 (1.54-1.50)

The table below summarises the geometric issues observed across the polymeric chains and their fit to the electron density. The red, orange, yellow and green segments on the lower bar indicate the fraction of residues that contain outliers for ≥ 3 , 2, 1 and 0 types of geometric quality criteria. A grey segment represents the fraction of residues that are not modelled. The numeric value for each fraction is indicated below the corresponding segment, with a dot representing fractions $\leq 5\%$. The upper red bar (where present) indicates the fraction of residues that have poor fit to the electron density. The numeric value is given above the bar.

Mol	Chain	Length	Quality of chain
1	A	557	<div> <div>8%</div> <div>94%</div> <div>5%</div> </div>
2	B	428	<div> <div>18%</div> <div>88%</div> <div>9%</div> <div>...</div> </div>

The following table lists non-polymeric compounds, carbohydrate monomers and non-standard residues in protein, DNA, RNA chains that are outliers for geometric or electron-density-fit criteria:

Mol	Type	Chain	Res	Chirality	Geometry	Clashes	Electron density
4	SO4	B	502	-	-	-	X
5	EDO	A	607	-	-	-	X

2 Entry composition

There are 7 unique types of molecules in this entry. The entry contains 16771 atoms, of which 7881 are hydrogens and 0 are deuteriums.

In the tables below, the ZeroOcc column contains the number of atoms modelled with zero occupancy, the AltConf column contains the number of residues with at least one atom in alternate conformation and the Trace column contains the number of residues modelled with at most 2 atoms.

- Molecule 1 is a protein called Reverse transcriptase/ribonuclease H.

Mol	Chain	Residues	Atoms						ZeroOcc	AltConf	Trace
1	A	556	Total	C	H	N	O	S	0	2	0
			9014	2931	4485	754	836	8			

There are 5 discrepancies between the modelled and reference sequences:

Chain	Residue	Modelled	Actual	Comment	Reference
A	-1	MET	-	EXPRESSION TAG	UNP P03366
A	0	VAL	-	EXPRESSION TAG	UNP P03366
A	172	ALA	LYS	ENGINEERED MUTATION	UNP P03366
A	173	ALA	LYS	ENGINEERED MUTATION	UNP P03366
A	280	SER	CYS	ENGINEERED MUTATION	UNP P03366

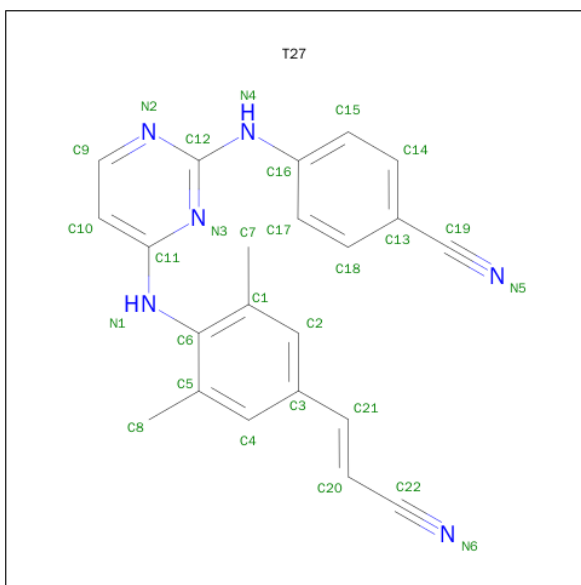
- Molecule 2 is a protein called p51 RT.

Mol	Chain	Residues	Atoms						ZeroOcc	AltConf	Trace
2	B	416	Total	C	H	N	O	S	0	4	0
			6836	2254	3378	571	626	7			

There is a discrepancy between the modelled and reference sequences:

Chain	Residue	Modelled	Actual	Comment	Reference
B	280	SER	CYS	ENGINEERED MUTATION	UNP P03366

- Molecule 3 is 4-{[4-({4-[(E)-2-CYANOETHENYL]-2,6-DIMETHYLPHENYL}AMINO)PYRIMIDIN-2-YL]AMINO}BENZONITRILE (three-letter code: T27) (formula: C₂₂H₁₈N₆).



Mol	Chain	Residues	Atoms				ZeroOcc	AltConf
3	A	1	Total	C	H	N	0	0
			46	22	18	6		

- Molecule 4 is SULFATE ION (three-letter code: SO4) (formula: O₄S).



Mol	Chain	Residues	Atoms			ZeroOcc	AltConf
4	A	1	Total	O	S	0	0
			5	4	1		
4	A	1	Total	O	S	0	0
			5	4	1		
4	A	1	Total	O	S	0	0
			5	4	1		

Continued on next page...

Continued from previous page...

Mol	Chain	Residues	Atoms			ZeroOcc	AltConf
4	A	1	Total	O	S	0	0
			5	4	1		
4	B	1	Total	O	S	0	0
			5	4	1		
4	B	1	Total	O	S	0	0
			5	4	1		

- Molecule 5 is 1,2-ETHANEDIOL (three-letter code: EDO) (formula: C₂H₆O₂).



Mol	Chain	Residues	Atoms			ZeroOcc	AltConf
5	A	1	Total	C	O	0	0
			4	2	2		
5	A	1	Total	C	O	0	0
			4	2	2		
5	B	1	Total	C	O	0	0
			4	2	2		
5	B	1	Total	C	O	0	0
			4	2	2		
5	B	1	Total	C	O	0	0
			4	2	2		

- Molecule 6 is MAGNESIUM ION (three-letter code: MG) (formula: Mg).

Mol	Chain	Residues	Atoms		ZeroOcc	AltConf
6	A	1	Total	Mg	0	0
			1	1		

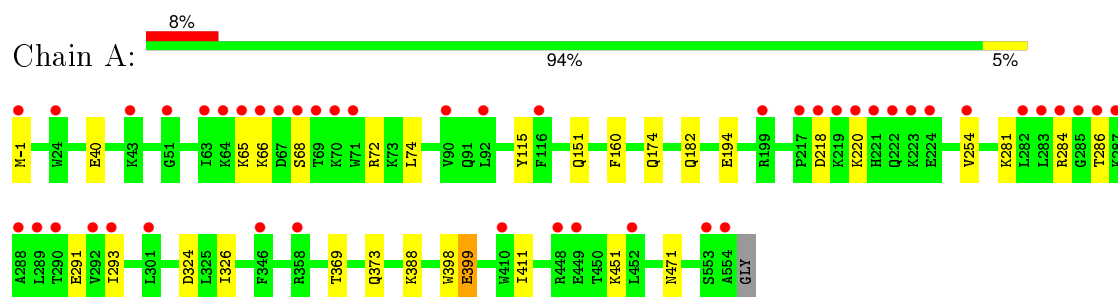
- Molecule 7 is water.

Mol	Chain	Residues	Atoms		ZeroOcc	AltConf
7	A	510	Total 510	O 510	0	0
7	B	314	Total 314	O 314	0	0

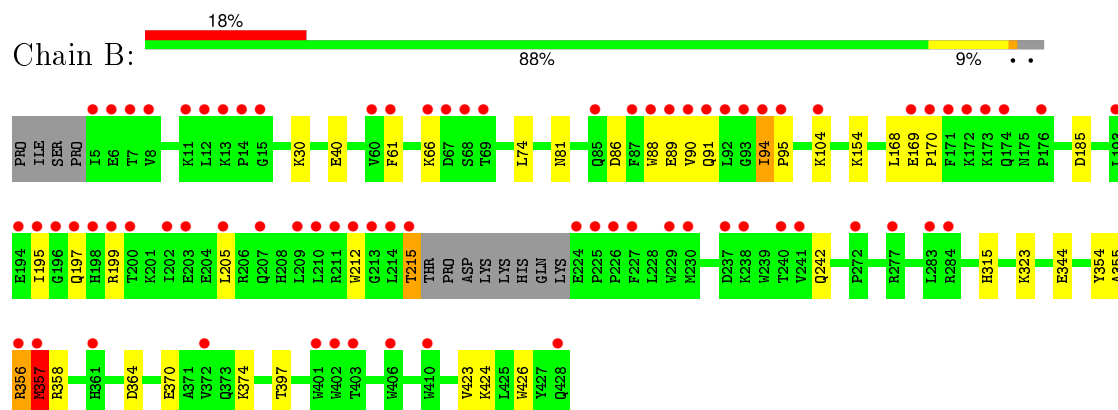
3 Residue-property plots

These plots are drawn for all protein, RNA and DNA chains in the entry. The first graphic for a chain summarises the proportions of errors displayed in the second graphic. The second graphic shows the sequence view annotated by issues in geometry and electron density. Residues are color-coded according to the number of geometric quality criteria for which they contain at least one outlier: green = 0, yellow = 1, orange = 2 and red = 3 or more. A red dot above a residue indicates a poor fit to the electron density ($RSRZ > 2$). Stretches of 2 or more consecutive residues without any outlier are shown as a green connector. Residues present in the sample, but not in the model, are shown in grey.

- Molecule 1: Reverse transcriptase/ribonuclease H



- Molecule 2: p51 RT



4 Data and refinement statistics

Property	Value	Source
Space group	C 1 2 1	Depositor
Cell constants a, b, c, α , β , γ	162.71Å 72.52Å 109.51Å 90.00° 100.84° 90.00°	Depositor
Resolution (Å)	35.85 – 1.51 37.94 – 1.50	Depositor EDS
% Data completeness (in resolution range)	97.0 (35.85-1.51) 96.7 (37.94-1.50)	Depositor EDS
R_{merge}	0.06	Depositor
R_{sym}	(Not available)	Depositor
$\langle I/\sigma(I) \rangle$ ¹	1.57 (at 1.50Å)	Xtriage
Refinement program	PHENIX (phenix.refine: 1.7.3_928)	Depositor
R, R_{free}	0.154 , 0.193 0.164 , 0.202	Depositor DCC
R_{free} test set	3835 reflections (2.06%)	DCC
Wilson B-factor (Å ²)	24.8	Xtriage
Anisotropy	0.031	Xtriage
Bulk solvent k_{sol} (e/Å ³), B_{sol} (Å ²)	0.43 , 55.9	EDS
Estimated twinning fraction	No twinning to report.	Xtriage
L-test for twinning ²	$\langle L \rangle = 0.50$, $\langle L^2 \rangle = 0.33$	Xtriage
Outliers	0 of 193562 reflections	Xtriage
F_o, F_c correlation	0.97	EDS
Total number of atoms	16771	wwPDB-VP
Average B, all atoms (Å ²)	41.0	wwPDB-VP

Xtriage's analysis on translational NCS is as follows: *The largest off-origin peak in the Patterson function is 4.24% of the height of the origin peak. No significant pseudotranslation is detected.*

¹Intensities estimated from amplitudes.

²Theoretical values of $\langle |L| \rangle$, $\langle L^2 \rangle$ for acentric reflections are 0.5, 0.375 respectively for untwinned datasets, and 0.333, 0.2 for perfectly twinned datasets.

5 Model quality [i](#)

5.1 Standard geometry [i](#)

Bond lengths and bond angles in the following residue types are not validated in this section: MG, SO4, T27, EDO

The Z score for a bond length (or angle) is the number of standard deviations the observed value is removed from the expected value. A bond length (or angle) with $|Z| > 5$ is considered an outlier worth inspection. RMSZ is the root-mean-square of all Z scores of the bond lengths (or angles).

Mol	Chain	Bond lengths		Bond angles	
		RMSZ	$\# Z > 5$	RMSZ	$\# Z > 5$
1	A	0.62	1/4654 (0.0%)	0.67	0/6325
2	B	0.60	0/3573	0.68	3/4855 (0.1%)
All	All	0.61	1/8227 (0.0%)	0.67	3/11180 (0.0%)

All (1) bond length outliers are listed below:

Mol	Chain	Res	Type	Atoms	Z	Observed(Å)	Ideal(Å)
1	A	399	GLU	CG-CD	-5.23	1.44	1.51

All (3) bond angle outliers are listed below:

Mol	Chain	Res	Type	Atoms	Z	Observed(°)	Ideal(°)
2	B	357	MET	CB-CG-SD	7.55	135.04	112.40
2	B	364	ASP	CB-CA-C	-5.44	99.52	110.40
2	B	185	ASP	CB-CG-OD2	-5.25	113.58	118.30

There are no chirality outliers.

There are no planarity outliers.

5.2 Too-close contacts [i](#)

In the following table, the Non-H and H(model) columns list the number of non-hydrogen atoms and hydrogen atoms in the chain respectively. The H(added) column lists the number of hydrogen atoms added and optimized by MolProbity. The Clashes column lists the number of clashes within the asymmetric unit, whereas Symm-Clashes lists symmetry related clashes.

Mol	Chain	Non-H	H(model)	H(added)	Clashes	Symm-Clashes
1	A	4529	4485	4589	23	0
2	B	3458	3378	3473	42	0

Continued on next page...

Continued from previous page...

Mol	Chain	Non-H	H(model)	H(added)	Clashes	Symm-Clashes
3	A	28	18	18	1	0
4	A	20	0	0	0	0
4	B	10	0	0	0	0
5	A	8	0	12	0	0
5	B	12	0	18	0	0
6	A	1	0	0	0	0
7	A	510	0	0	5	0
7	B	314	0	0	6	0
All	All	8890	7881	8110	65	0

The all-atom clashscore is defined as the number of clashes found per 1000 atoms (including hydrogen atoms). The all-atom clashscore for this structure is 4.

The worst 5 of 65 close contacts within the same asymmetric unit are listed below, sorted by their clash magnitude.

Atom-1	Atom-2	Interatomic distance (Å)	Clash overlap (Å)
2:B:94:ILE:HG21	7:B:892:HOH:O	1.85	0.76
2:B:212:TRP:O	2:B:215:THR:HG22	1.85	0.75
2:B:94:ILE:O	2:B:94:ILE:HG23	1.89	0.71
1:A:286:THR:HG21	1:A:291:GLU:OE1	1.92	0.68
2:B:30:LYS:NZ	7:B:839:HOH:O	2.27	0.66

There are no symmetry-related clashes.

5.3 Torsion angles [i](#)

5.3.1 Protein backbone [i](#)

In the following table, the Percentiles column shows the percent Ramachandran outliers of the chain as a percentile score with respect to all X-ray entries followed by that with respect to entries of similar resolution.

The Analysed column shows the number of residues for which the backbone conformation was analysed, and the total number of residues.

Mol	Chain	Analysed	Favoured	Allowed	Outliers	Percentiles	
1	A	556/557 (100%)	542 (98%)	13 (2%)	1 (0%)	52	25
2	B	416/428 (97%)	401 (96%)	15 (4%)	0	100	100
All	All	972/985 (99%)	943 (97%)	28 (3%)	1 (0%)	56	27

All (1) Ramachandran outliers are listed below:

Mol	Chain	Res	Type
1	A	66	LYS

5.3.2 Protein sidechains ⓘ

In the following table, the Percentiles column shows the percent sidechain outliers of the chain as a percentile score with respect to all X-ray entries followed by that with respect to entries of similar resolution.

The Analysed column shows the number of residues for which the sidechain conformation was analysed, and the total number of residues.

Mol	Chain	Analysed	Rotameric	Outliers	Percentiles	
1	A	497/495 (100%)	494 (99%)	3 (1%)	90	77
2	B	381/390 (98%)	375 (98%)	6 (2%)	70	40
All	All	878/885 (99%)	869 (99%)	9 (1%)	82	61

5 of 9 residues with a non-rotameric sidechain are listed below:

Mol	Chain	Res	Type
2	B	197	GLN
2	B	357	MET
2	B	242	GLN
1	A	399	GLU
2	B	215	THR

Some sidechains can be flipped to improve hydrogen bonding and reduce clashes. All (4) such sidechains are listed below:

Mol	Chain	Res	Type
1	A	151	GLN
1	A	258	GLN
2	B	161	GLN
2	B	197	GLN

5.3.3 RNA ⓘ

There are no RNA molecules in this entry.

5.4 Non-standard residues in protein, DNA, RNA chains [i](#)

There are no non-standard protein/DNA/RNA residues in this entry.

5.5 Carbohydrates [i](#)

There are no carbohydrates in this entry.

5.6 Ligand geometry [i](#)

Of 13 ligands modelled in this entry, 1 is monoatomic - leaving 12 for Mogul analysis.

In the following table, the Counts columns list the number of bonds (or angles) for which Mogul statistics could be retrieved, the number of bonds (or angles) that are observed in the model and the number of bonds (or angles) that are defined in the chemical component dictionary. The Link column lists molecule types, if any, to which the group is linked. The Z score for a bond length (or angle) is the number of standard deviations the observed value is removed from the expected value. A bond length (or angle) with $|Z| > 2$ is considered an outlier worth inspection. RMSZ is the root-mean-square of all Z scores of the bond lengths (or angles).

Mol	Type	Chain	Res	Link	Bond lengths			Bond angles		
					Counts	RMSZ	$\# Z > 2$	Counts	RMSZ	$\# Z > 2$
3	T27	A	601	-	30,30,30	0.97	2 (6%)	37,40,40	1.62	8 (21%)
4	SO4	A	602	-	4,4,4	0.27	0	6,6,6	0.33	0
4	SO4	A	603	-	4,4,4	0.16	0	6,6,6	0.40	0
4	SO4	A	604	-	4,4,4	0.13	0	6,6,6	0.08	0
4	SO4	A	605	-	4,4,4	0.09	0	6,6,6	0.30	0
5	EDO	A	606	-	3,3,3	0.37	0	2,2,2	0.67	0
5	EDO	A	607	-	3,3,3	0.61	0	2,2,2	0.49	0
4	SO4	B	501	-	4,4,4	0.24	0	6,6,6	0.16	0
4	SO4	B	502	-	4,4,4	0.27	0	6,6,6	0.39	0
5	EDO	B	503	-	3,3,3	0.37	0	2,2,2	0.03	0
5	EDO	B	504	-	3,3,3	0.39	0	2,2,2	0.46	0
5	EDO	B	505	-	3,3,3	0.35	0	2,2,2	0.56	0

In the following table, the Chirals column lists the number of chiral outliers, the number of chiral centers analysed, the number of these observed in the model and the number defined in the chemical component dictionary. Similar counts are reported in the Torsion and Rings columns. '-' means no outliers of that kind were identified.

Mol	Type	Chain	Res	Link	Chirals	Torsions	Rings
3	T27	A	601	-	-	0/13/14/14	0/3/3/3
4	SO4	A	602	-	-	0/0/0/0	0/0/0/0
4	SO4	A	603	-	-	0/0/0/0	0/0/0/0

Continued on next page...

Continued from previous page...

Mol	Type	Chain	Res	Link	Chirals	Torsions	Rings
4	SO4	A	604	-	-	0/0/0/0	0/0/0/0
4	SO4	A	605	-	-	0/0/0/0	0/0/0/0
5	EDO	A	606	-	-	0/1/1/1	0/0/0/0
5	EDO	A	607	-	-	0/1/1/1	0/0/0/0
4	SO4	B	501	-	-	0/0/0/0	0/0/0/0
4	SO4	B	502	-	-	0/0/0/0	0/0/0/0
5	EDO	B	503	-	-	0/1/1/1	0/0/0/0
5	EDO	B	504	-	-	0/1/1/1	0/0/0/0
5	EDO	B	505	-	-	0/1/1/1	0/0/0/0

All (2) bond length outliers are listed below:

Mol	Chain	Res	Type	Atoms	Z	Observed(Å)	Ideal(Å)
3	A	601	T27	C4-C3	-2.30	1.36	1.39
3	A	601	T27	C12-N4	2.01	1.39	1.36

The worst 5 of 8 bond angle outliers are listed below:

Mol	Chain	Res	Type	Atoms	Z	Observed(°)	Ideal(°)
3	A	601	T27	C6-N1-C11	-3.89	119.04	124.57
3	A	601	T27	C3-C2-C1	-3.53	118.70	122.28
3	A	601	T27	C10-C9-N2	-3.16	120.29	123.90
3	A	601	T27	C7-C1-C6	-2.78	118.33	121.42
3	A	601	T27	C15-C16-N4	-2.37	112.91	120.66

There are no chirality outliers.

There are no torsion outliers.

There are no ring outliers.

1 monomer is involved in 1 short contact:

Mol	Chain	Res	Type	Clashes	Symm-Clashes
3	A	601	T27	1	0

5.7 Other polymers ⓘ

There are no such residues in this entry.

5.8 Polymer linkage issues ⓘ

There are no chain breaks in this entry.

6 Fit of model and data [i](#)

6.1 Protein, DNA and RNA chains [i](#)

In the following table, the column labelled ‘#RSRZ> 2’ contains the number (and percentage) of RSRZ outliers, followed by percent RSRZ outliers for the chain as percentile scores relative to all X-ray entries and entries of similar resolution. The OWAB column contains the minimum, median, 95th percentile and maximum values of the occupancy-weighted average B-factor per residue. The column labelled ‘Q< 0.9’ lists the number of (and percentage) of residues with an average occupancy less than 0.9.

Mol	Chain	Analysed	<RSRZ>	#RSRZ>2	OWAB(Å ²)	Q<0.9
1	A	556/557 (99%)	0.33	46 (8%) 14 14	18, 32, 63, 91	0
2	B	416/428 (97%)	0.90	76 (18%) 2 2	19, 34, 71, 102	0
All	All	972/985 (98%)	0.58	122 (12%) 5 4	18, 33, 70, 102	0

The worst 5 of 122 RSRZ outliers are listed below:

Mol	Chain	Res	Type	RSRZ
2	B	92	LEU	28.4
2	B	90	VAL	14.4
2	B	214	LEU	13.5
1	A	219	LYS	9.7
1	A	69	THR	9.3

6.2 Non-standard residues in protein, DNA, RNA chains [i](#)

There are no non-standard protein/DNA/RNA residues in this entry.

6.3 Carbohydrates [i](#)

There are no carbohydrates in this entry.

6.4 Ligands [i](#)

In the following table, the Atoms column lists the number of modelled atoms in the group and the number defined in the chemical component dictionary. LLDF column lists the quality of electron density of the group with respect to its neighbouring residues in protein, DNA or RNA chains. The B-factors column lists the minimum, median, 95th percentile and maximum values of B factors of atoms in the group. The column labelled ‘Q< 0.9’ lists the number of atoms with occupancy less than 0.9.

Mol	Type	Chain	Res	Atoms	RSCC	RSR	LLDF	B-factors(\AA^2)	Q<0.9
5	EDO	A	607	4/4	0.93	0.18	3.30	41,46,47,50	0
4	SO4	B	502	5/5	0.94	0.13	2.23	76,77,79,80	0
4	SO4	A	605	5/5	0.97	0.18	1.71	74,74,75,75	0
4	SO4	B	501	5/5	0.94	0.25	1.17	62,62,66,66	0
5	EDO	A	606	4/4	0.95	0.10	1.05	31,34,39,43	0
5	EDO	B	505	4/4	0.89	0.13	0.56	47,48,49,50	0
3	T27	A	601	28/28	0.97	0.09	0.48	23,30,38,45	0
4	SO4	A	603	5/5	0.97	0.08	0.18	61,61,63,64	0
4	SO4	A	604	5/5	0.97	0.12	-0.22	74,74,75,76	0
4	SO4	A	602	5/5	0.96	0.09	-0.52	55,56,59,63	0
5	EDO	B	504	4/4	0.98	0.07	-0.65	38,39,41,41	0
6	MG	A	608	1/1	0.98	0.05	-1.37	42,42,42,42	0
5	EDO	B	503	4/4	0.96	0.15	-	40,42,45,46	0

6.5 Other polymers ⓘ

There are no such residues in this entry.