



Full wwPDB X-ray Structure Validation Report ⓘ

Feb 1, 2016 – 02:11 AM GMT

PDB ID : 2G2H
Title : A Src-like Inactive Conformation in the Abl Tyrosine Kinase Domain
Authors : Levinson, N.M.; Kuchment, O.
Deposited on : 2006-02-16
Resolution : 2.00 Å(reported)

This is a Full wwPDB X-ray Structure Validation Report for a publicly released PDB entry.
We welcome your comments at validation@mail.wwpdb.org
A user guide is available at
<http://wwpdb.org/validation/2016/XrayValidationReportHelp>
with specific help available everywhere you see the ⓘ symbol.

The following versions of software and data (see [references ⓘ](#)) were used in the production of this report:

MolProbity : 4.02b-467
Mogul : 1.7 (RC4), CSD as536be (2015)
Xtriage (Phenix) : 1.9-1692
EDS : rb-20026688
Percentile statistics : 20151230.v01 (using entries in the PDB archive December 30th 2015)
Refmac : 5.8.0135
CCP4 : 6.5.0
Ideal geometry (proteins) : Engh & Huber (2001)
Ideal geometry (DNA, RNA) : Parkinson et al. (1996)
Validation Pipeline (wwPDB-VP) : trunk26865

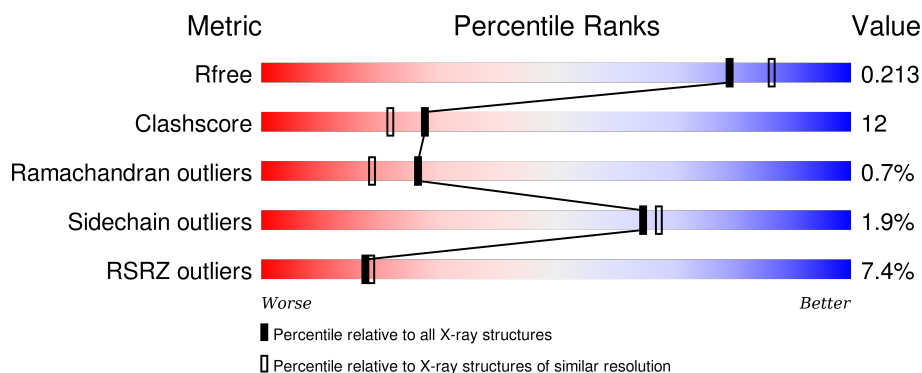
1 Overall quality at a glance

The following experimental techniques were used to determine the structure:

X-RAY DIFFRACTION

The reported resolution of this entry is 2.00 Å.

Percentile scores (ranging between 0-100) for global validation metrics of the entry are shown in the following graphic. The table shows the number of entries on which the scores are based.



Metric	Whole archive (#Entries)	Similar resolution (#Entries, resolution range(Å))
R_{free}	91344	6249 (2.00-2.00)
Clashscore	102246	7340 (2.00-2.00)
Ramachandran outliers	100387	7248 (2.00-2.00)
Sidechain outliers	100360	7247 (2.00-2.00)
RSRZ outliers	91569	6262 (2.00-2.00)

The table below summarises the geometric issues observed across the polymeric chains and their fit to the electron density. The red, orange, yellow and green segments on the lower bar indicate the fraction of residues that contain outliers for ≥ 3 , 2, 1 and 0 types of geometric quality criteria. A grey segment represents the fraction of residues that are not modelled. The numeric value for each fraction is indicated below the corresponding segment, with a dot representing fractions $\leq 5\%$. The upper red bar (where present) indicates the fraction of residues that have poor fit to the electron density. The numeric value is given above the bar.

Mol	Chain	Length	Quality of chain
1	A	287	<div> <div>4%</div> <div>79% 15% 5%</div> </div>
1	B	287	<div> <div>10%</div> <div>73% 20% • 5%</div> </div>

2 Entry composition

There are 3 unique types of molecules in this entry. The entry contains 4889 atoms, of which 0 are hydrogens and 0 are deuteriums.

In the tables below, the ZeroOcc column contains the number of atoms modelled with zero occupancy, the AltConf column contains the number of residues with at least one atom in alternate conformation and the Trace column contains the number of residues modelled with at most 2 atoms.

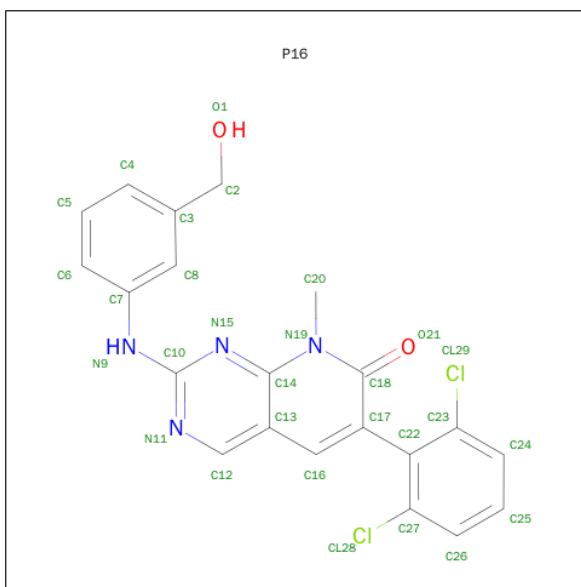
- Molecule 1 is a protein called Abl Tyrosine.

Mol	Chain	Residues	Atoms					ZeroOcc	AltConf	Trace
1	A	272	Total	C	N	O	S	0	0	0
			2209	1421	358	413	17			
1	B	272	Total	C	N	O	S	0	0	0
			2209	1421	358	413	17			

There are 8 discrepancies between the modelled and reference sequences:

Chain	Residue	Modelled	Actual	Comment	Reference
A	245	GLY	-	CLONING ARTIFACT	UNP P00519
A	246	HIS	-	CLONING ARTIFACT	UNP P00519
A	247	MET	-	CLONING ARTIFACT	UNP P00519
A	415	PRO	HIS	ENGINEERED	UNP P00519
B	245	GLY	-	CLONING ARTIFACT	UNP P00519
B	246	HIS	-	CLONING ARTIFACT	UNP P00519
B	247	MET	-	CLONING ARTIFACT	UNP P00519
B	415	PRO	HIS	ENGINEERED	UNP P00519

- Molecule 2 is 6-(2,6-DICHLOROPHENYL)-2-{[3-(HYDROXYMETHYL)PHENYL]AMINO}-8-METHYLPYRIDO[2,3-D]PYRIMIDIN-7(8H)-ONE (three-letter code: P16) (formula: C₂₁H₁₆Cl₂N₄O₂).



Mol	Chain	Residues	Atoms					ZeroOcc	AltConf
2	A	1	Total	C	Cl	N	O	0	0
			29	21	2	4	2		
2	B	1	Total	C	Cl	N	O	0	0
			29	21	2	4	2		

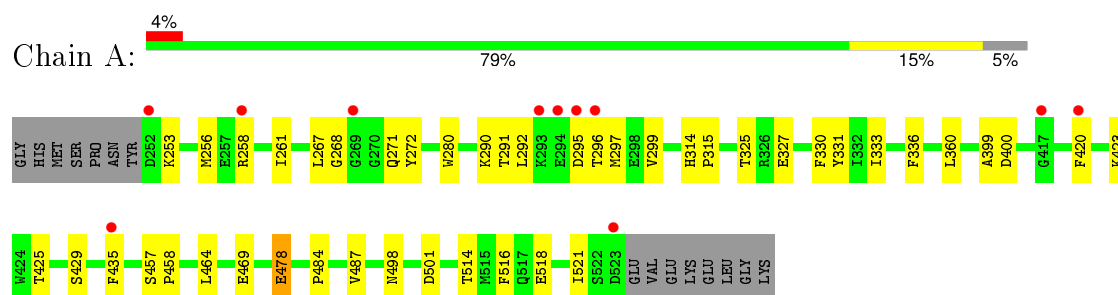
- Molecule 3 is water.

Mol	Chain	Residues	Atoms		ZeroOcc	AltConf
3	A	237	Total	O	0	0
			237	237		
3	B	176	Total	O	0	0
			176	176		

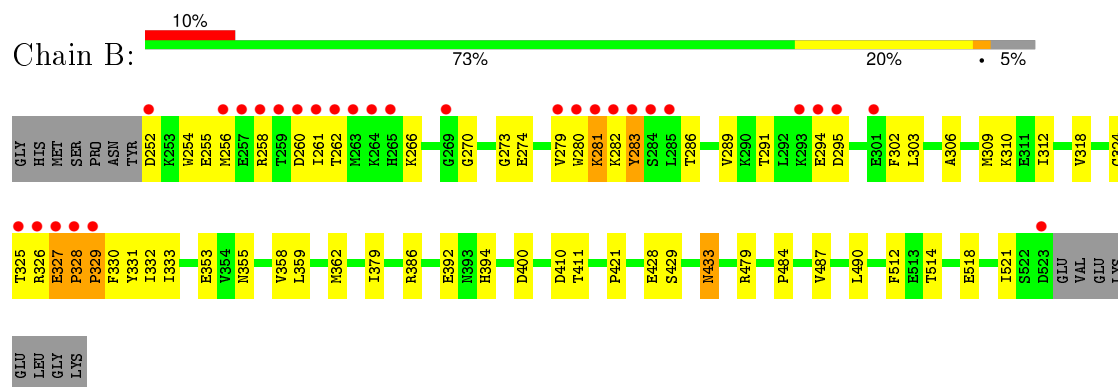
3 Residue-property plots [i](#)

These plots are drawn for all protein, RNA and DNA chains in the entry. The first graphic for a chain summarises the proportions of errors displayed in the second graphic. The second graphic shows the sequence view annotated by issues in geometry and electron density. Residues are color-coded according to the number of geometric quality criteria for which they contain at least one outlier: green = 0, yellow = 1, orange = 2 and red = 3 or more. A red dot above a residue indicates a poor fit to the electron density ($RSRZ > 2$). Stretches of 2 or more consecutive residues without any outlier are shown as a green connector. Residues present in the sample, but not in the model, are shown in grey.

• Molecule 1: Abl Tyrosine



• Molecule 1: Abl Tyrosine



4 Data and refinement statistics

Property	Value	Source
Space group	P 21 21 2	Depositor
Cell constants a, b, c, α , β , γ	104.39 Å 131.49 Å 56.50 Å 90.00° 90.00° 90.00°	Depositor
Resolution (Å)	50.00 – 2.00 49.69 – 1.73	Depositor EDS
% Data completeness (in resolution range)	(Not available) (50.00-2.00) 90.5 (49.69-1.73)	Depositor EDS
R_{merge}	(Not available)	Depositor
R_{sym}	0.11	Depositor
$\langle I/\sigma(I) \rangle$ ¹	1.56 (at 1.73 Å)	Xtriage
Refinement program	CNS 1.1	Depositor
R, R_{free}	0.193 , 0.213 0.191 , 0.213	Depositor DCC
R_{free} test set	3664 reflections (7.08%)	DCC
Wilson B-factor (Å ²)	15.4	Xtriage
Anisotropy	0.527	Xtriage
Bulk solvent k_{sol} (e/Å ³), B_{sol} (Å ²)	0.39 , 53.2	EDS
Estimated twinning fraction	No twinning to report.	Xtriage
L-test for twinning ²	$\langle L \rangle = 0.48$, $\langle L^2 \rangle = 0.32$	Xtriage
Outliers	2 of 79736 reflections (0.003%)	Xtriage
F_o, F_c correlation	0.94	EDS
Total number of atoms	4889	wwPDB-VP
Average B, all atoms (Å ²)	23.0	wwPDB-VP

Xtriage's analysis on translational NCS is as follows: *The largest off-origin peak in the Patterson function is 4.17% of the height of the origin peak. No significant pseudotranslation is detected.*

¹Intensities estimated from amplitudes.

²Theoretical values of $\langle |L| \rangle$, $\langle L^2 \rangle$ for acentric reflections are 0.5, 0.375 respectively for untwinned datasets, and 0.333, 0.2 for perfectly twinned datasets.

5 Model quality

5.1 Standard geometry

Bond lengths and bond angles in the following residue types are not validated in this section: P16

The Z score for a bond length (or angle) is the number of standard deviations the observed value is removed from the expected value. A bond length (or angle) with $|Z| > 5$ is considered an outlier worth inspection. RMSZ is the root-mean-square of all Z scores of the bond lengths (or angles).

Mol	Chain	Bond lengths		Bond angles	
		RMSZ	# Z >5	RMSZ	# Z >5
1	A	0.35	0/2265	0.59	0/3066
1	B	0.33	0/2265	0.58	0/3066
All	All	0.34	0/4530	0.59	0/6132

There are no bond length outliers.

There are no bond angle outliers.

There are no chirality outliers.

There are no planarity outliers.

5.2 Too-close contacts

In the following table, the Non-H and H(model) columns list the number of non-hydrogen atoms and hydrogen atoms in the chain respectively. The H(added) column lists the number of hydrogen atoms added and optimized by MolProbity. The Clashes column lists the number of clashes within the asymmetric unit, whereas Symm-Clashes lists symmetry related clashes.

Mol	Chain	Non-H	H(model)	H(added)	Clashes	Symm-Clashes
1	A	2209	0	2163	30	0
1	B	2209	0	2163	73	0
2	A	29	0	16	3	0
2	B	29	0	16	0	0
3	A	237	0	0	2	1
3	B	176	0	0	3	0
All	All	4889	0	4358	104	1

The all-atom clashscore is defined as the number of clashes found per 1000 atoms (including hydrogen atoms). The all-atom clashscore for this structure is 12.

All (104) close contacts within the same asymmetric unit are listed below, sorted by their clash

magnitude.

Atom-1	Atom-2	Interatomic distance (Å)	Clash overlap (Å)
1:B:328:PRO:HB2	1:B:329:PRO:HD2	1.29	1.05
1:B:256:MET:HE1	1:B:333:ILE:HD13	1.36	1.04
1:B:261:ILE:HG13	1:B:280:TRP:CE3	2.05	0.91
1:B:260:ASP:HB2	1:B:280:TRP:CZ3	2.07	0.90
1:B:266:LYS:HE2	1:B:270:GLY:HA2	1.56	0.87
1:B:479:ARG:HB3	1:B:479:ARG:HH11	1.40	0.84
1:B:328:PRO:CB	1:B:329:PRO:HD2	2.09	0.83
1:B:328:PRO:HB2	1:B:329:PRO:CD	2.14	0.77
1:B:256:MET:HE1	1:B:333:ILE:CD1	2.16	0.76
1:B:261:ILE:HG13	1:B:280:TRP:HE3	1.49	0.74
1:B:328:PRO:O	1:B:329:PRO:C	2.23	0.73
1:B:260:ASP:HB2	1:B:280:TRP:CH2	2.22	0.73
1:A:299:VAL:HB	3:A:580:HOH:O	1.87	0.73
1:B:355:ASN:HD21	1:B:521:ILE:HG12	1.56	0.70
1:B:258:ARG:NH2	1:B:327:GLU:HG3	2.09	0.68
1:A:514:THR:O	1:A:518:GLU:HG3	1.93	0.68
1:B:255:GLU:HG3	1:B:326:ARG:NH2	2.10	0.67
1:A:268:GLY:O	1:A:271:GLN:HG2	1.96	0.66
1:B:261:ILE:HG13	1:B:280:TRP:CZ3	2.29	0.66
1:B:280:TRP:HD1	1:B:283:TYR:CD1	2.12	0.66
1:B:324:CYS:HB2	1:B:331:TYR:HB2	1.77	0.65
1:B:479:ARG:HB3	1:B:479:ARG:NH1	2.09	0.65
1:B:261:ILE:CG1	1:B:280:TRP:HE3	2.10	0.65
1:B:326:ARG:HB2	1:B:327:GLU:HG2	1.80	0.64
1:B:280:TRP:HD1	1:B:283:TYR:HD1	1.46	0.63
1:B:328:PRO:CB	1:B:329:PRO:CD	2.76	0.62
1:A:261:ILE:HD13	1:A:280:TRP:HA	1.80	0.62
1:B:327:GLU:O	1:B:328:PRO:O	2.17	0.60
1:B:386:ARG:NH2	1:B:421:PRO:HG2	2.17	0.60
1:A:258:ARG:HH21	1:A:327:GLU:HB2	1.67	0.60
1:B:328:PRO:O	1:B:330:PHE:N	2.35	0.59
1:A:478:GLU:CD	1:A:478:GLU:H	2.06	0.59
1:B:258:ARG:NH1	1:B:329:PRO:HB2	2.19	0.58
1:A:299:VAL:HG23	3:A:626:HOH:O	2.03	0.58
1:B:359:LEU:HA	1:B:362:MET:HE2	1.86	0.58
1:B:392:GLU:HG3	3:B:689:HOH:O	2.02	0.58
1:B:256:MET:CE	1:B:333:ILE:HD13	2.24	0.57
1:B:479:ARG:CB	1:B:479:ARG:HH11	2.16	0.55
1:B:355:ASN:OD1	1:B:358:VAL:HG23	2.07	0.55
1:B:289:VAL:HG22	1:B:333:ILE:HG12	1.89	0.54
1:B:280:TRP:CD1	1:B:283:TYR:CD1	2.95	0.53

Continued on next page...

Continued from previous page...

Atom-1	Atom-2	Interatomic distance (Å)	Clash overlap (Å)
1:A:258:ARG:NH2	1:A:327:GLU:HB2	2.23	0.53
1:B:353:GLU:OE2	1:B:394:HIS:HE1	1.92	0.53
1:B:514:THR:O	1:B:518:GLU:HG3	2.09	0.53
1:B:274:GLU:HB3	1:B:291:THR:HG23	1.90	0.53
1:B:355:ASN:ND2	1:B:521:ILE:HG12	2.25	0.52
1:B:386:ARG:HH22	1:B:421:PRO:CG	2.23	0.52
1:B:256:MET:HE3	1:B:280:TRP:CZ3	2.45	0.51
1:B:410:ASP:OD1	1:B:411:THR:HG23	2.09	0.51
1:B:386:ARG:HD3	3:B:623:HOH:O	2.11	0.51
1:B:280:TRP:CD1	1:B:283:TYR:CE1	2.99	0.50
1:A:292:LEU:CD2	1:A:299:VAL:HG22	2.42	0.50
1:A:256:MET:HE1	1:A:261:ILE:HD11	1.93	0.50
1:B:274:GLU:HB3	1:B:291:THR:CG2	2.43	0.49
1:A:399:ALA:HB1	2:A:532:P16:CL28	2.49	0.49
1:A:271:GLN:HG3	1:A:272:TYR:CD1	2.47	0.48
1:B:266:LYS:HE3	1:B:273:GLY:O	2.13	0.48
1:B:302:PHE:CZ	1:B:332:ILE:HG13	2.47	0.48
1:B:261:ILE:CG2	1:B:262:THR:N	2.75	0.48
1:B:262:THR:CG2	1:B:279:VAL:HB	2.44	0.48
1:B:261:ILE:CG1	1:B:280:TRP:CE3	2.85	0.47
2:A:532:P16:H6	2:A:532:P16:N15	2.30	0.47
1:A:425:THR:CG2	1:A:429:SER:HB2	2.44	0.47
1:B:484:PRO:HG2	1:B:487:VAL:CG2	2.44	0.47
1:B:294:GLU:HG3	1:B:295:ASP:N	2.30	0.47
1:B:386:ARG:HH22	1:B:421:PRO:HG2	1.79	0.46
1:B:286:THR:HG22	3:B:682:HOH:O	2.16	0.46
1:A:521:ILE:O	1:A:521:ILE:HG22	2.16	0.45
1:B:280:TRP:O	1:B:281:LYS:C	2.56	0.45
1:A:291:THR:HG22	1:A:331:TYR:CD2	2.52	0.45
1:B:256:MET:HE3	1:B:280:TRP:CH2	2.51	0.45
1:B:261:ILE:HG22	1:B:262:THR:N	2.30	0.44
1:B:433:ASN:HA	1:B:433:ASN:HD22	1.52	0.44
1:B:266:LYS:HE2	1:B:270:GLY:CA	2.37	0.44
1:A:333:ILE:HD12	1:A:333:ILE:N	2.33	0.44
1:B:324:CYS:CB	1:B:331:TYR:HB2	2.45	0.44
1:A:290:LYS:HB2	2:A:532:P16:CL29	2.55	0.44
1:B:379:ILE:C	1:B:379:ILE:HD12	2.38	0.44
1:A:498:ASN:HB3	1:A:501:ASP:OD2	2.18	0.44
1:A:457:SER:HA	1:A:458:PRO:HD3	1.89	0.44
1:A:360:LEU:HD23	1:A:516:PHE:HA	1.99	0.43
1:B:490:LEU:HD13	1:B:512:PHE:CE1	2.53	0.43

Continued on next page...

Continued from previous page...

Atom-1	Atom-2	Interatomic distance (Å)	Clash overlap (Å)
1:A:258:ARG:HG3	1:A:258:ARG:NH1	2.33	0.43
1:B:303:LEU:CD2	1:B:325:THR:HG23	2.49	0.43
1:B:355:ASN:HD22	1:B:521:ILE:HG23	1.83	0.43
1:A:256:MET:HE2	1:A:261:ILE:HG12	2.01	0.43
1:A:296:THR:OG1	1:A:297:MET:N	2.52	0.43
1:B:358:VAL:O	1:B:362:MET:HG3	2.19	0.42
1:B:252:ASP:HB3	1:B:255:GLU:HG2	2.01	0.42
1:B:252:ASP:OD1	1:B:254:TRP:HB2	2.19	0.42
1:B:258:ARG:NH2	1:B:328:PRO:O	2.53	0.42
1:A:267:LEU:HD11	1:A:336:PHE:HE1	1.84	0.42
1:B:262:THR:O	1:B:262:THR:HG23	2.20	0.42
1:A:423:LYS:HE3	1:A:464:LEU:HD23	2.02	0.41
1:A:429:SER:HB3	1:A:435:PHE:CZ	2.55	0.41
1:A:325:THR:HA	1:A:330:PHE:HD2	1.86	0.41
1:B:318:VAL:O	1:B:400:ASP:OD1	2.38	0.41
1:B:294:GLU:HG3	1:B:295:ASP:H	1.85	0.41
1:A:314:HIS:CG	1:A:315:PRO:HD2	2.55	0.41
1:B:306:ALA:O	1:B:310:LYS:HG3	2.20	0.41
1:A:484:PRO:HG2	1:A:487:VAL:CG2	2.51	0.41
1:B:309:MET:HA	1:B:312:ILE:HG12	2.01	0.41
1:A:291:THR:HG22	1:A:331:TYR:CE2	2.57	0.40
1:B:428:GLU:HG2	1:B:429:SER:N	2.35	0.40

All (1) symmetry-related close contacts are listed below. The label for Atom-2 includes the symmetry operator and encoded unit-cell translations to be applied.

Atom-1	Atom-2	Interatomic distance (Å)	Clash overlap (Å)
3:A:717:HOH:O	3:A:717:HOH:O[2_455]	2.03	0.17

5.3 Torsion angles ⓘ

5.3.1 Protein backbone ⓘ

In the following table, the Percentiles column shows the percent Ramachandran outliers of the chain as a percentile score with respect to all X-ray entries followed by that with respect to entries of similar resolution.

The Analysed column shows the number of residues for which the backbone conformation was analysed, and the total number of residues.

Mol	Chain	Analysed	Favoured	Allowed	Outliers	Percentiles	
1	A	270/287 (94%)	263 (97%)	7 (3%)	0	100	100
1	B	270/287 (94%)	259 (96%)	7 (3%)	4 (2%)	13	5
All	All	540/574 (94%)	522 (97%)	14 (3%)	4 (1%)	26	19

All (4) Ramachandran outliers are listed below:

Mol	Chain	Res	Type
1	B	328	PRO
1	B	329	PRO
1	B	281	LYS
1	B	282	LYS

5.3.2 Protein sidechains ⓘ

In the following table, the Percentiles column shows the percent sidechain outliers of the chain as a percentile score with respect to all X-ray entries followed by that with respect to entries of similar resolution.

The Analysed column shows the number of residues for which the sidechain conformation was analysed, and the total number of residues.

Mol	Chain	Analysed	Rotameric	Outliers	Percentiles	
1	A	238/251 (95%)	232 (98%)	6 (2%)	55	55
1	B	238/251 (95%)	235 (99%)	3 (1%)	76	79
All	All	476/502 (95%)	467 (98%)	9 (2%)	65	67

All (9) residues with a non-rotameric sidechain are listed below:

Mol	Chain	Res	Type
1	A	253	LYS
1	A	295	ASP
1	A	400	ASP
1	A	420	PHE
1	A	469	GLU
1	A	478	GLU
1	B	283	TYR
1	B	327	GLU
1	B	433	ASN

Some sidechains can be flipped to improve hydrogen bonding and reduce clashes. All (5) such sidechains are listed below:

Mol	Chain	Res	Type
1	A	265	HIS
1	B	394	HIS
1	B	433	ASN
1	B	496	GLN
1	B	509	HIS

5.3.3 RNA [i](#)

There are no RNA molecules in this entry.

5.4 Non-standard residues in protein, DNA, RNA chains [i](#)

There are no non-standard protein/DNA/RNA residues in this entry.

5.5 Carbohydrates [i](#)

There are no carbohydrates in this entry.

5.6 Ligand geometry [i](#)

2 ligands are modelled in this entry.

In the following table, the Counts columns list the number of bonds (or angles) for which Mogul statistics could be retrieved, the number of bonds (or angles) that are observed in the model and the number of bonds (or angles) that are defined in the chemical component dictionary. The Link column lists molecule types, if any, to which the group is linked. The Z score for a bond length (or angle) is the number of standard deviations the observed value is removed from the expected value. A bond length (or angle) with $|Z| > 2$ is considered an outlier worth inspection. RMSZ is the root-mean-square of all Z scores of the bond lengths (or angles).

Mol	Type	Chain	Res	Link	Bond lengths			Bond angles		
					Counts	RMSZ	# $ Z > 2$	Counts	RMSZ	# $ Z > 2$
2	P16	A	532	-	32,32,32	2.62	15 (46%)	36,46,46	1.20	4 (11%)
2	P16	B	532	-	32,32,32	2.79	16 (50%)	36,46,46	1.21	4 (11%)

In the following table, the Chirals column lists the number of chiral outliers, the number of chiral centers analysed, the number of these observed in the model and the number defined in the chemical component dictionary. Similar counts are reported in the Torsion and Rings columns. '-' means no outliers of that kind were identified.

Mol	Type	Chain	Res	Link	Chirals	Torsions	Rings
2	P16	A	532	-	-	0/10/10/10	0/4/4/4
2	P16	B	532	-	-	0/10/10/10	0/4/4/4

All (31) bond length outliers are listed below:

Mol	Chain	Res	Type	Atoms	Z	Observed(Å)	Ideal(Å)
2	B	532	P16	C5-C4	2.03	1.43	1.38
2	A	532	P16	C24-C23	2.04	1.43	1.39
2	A	532	P16	C5-C6	2.05	1.43	1.38
2	B	532	P16	C25-C26	2.10	1.43	1.38
2	A	532	P16	C14-N19	2.17	1.41	1.39
2	A	532	P16	C26-C27	2.19	1.43	1.39
2	B	532	P16	C5-C6	2.21	1.43	1.38
2	B	532	P16	C26-C27	2.28	1.44	1.39
2	A	532	P16	C12-N11	2.43	1.36	1.32
2	B	532	P16	C8-C3	2.52	1.43	1.39
2	B	532	P16	C14-N19	2.53	1.42	1.39
2	A	532	P16	C13-C14	2.54	1.46	1.41
2	B	532	P16	C12-N11	2.59	1.36	1.32
2	A	532	P16	C8-C3	2.64	1.44	1.39
2	B	532	P16	C13-C14	2.65	1.46	1.41
2	B	532	P16	C4-C3	2.93	1.45	1.38
2	A	532	P16	C4-C3	3.03	1.45	1.38
2	A	532	P16	C18-C17	3.41	1.51	1.44
2	A	532	P16	C8-C7	3.46	1.45	1.39
2	B	532	P16	C6-C7	3.53	1.45	1.39
2	B	532	P16	C18-C17	3.62	1.52	1.44
2	B	532	P16	C8-C7	3.68	1.45	1.39
2	A	532	P16	C6-C7	3.79	1.45	1.39
2	A	532	P16	C10-N11	4.36	1.40	1.34
2	B	532	P16	C10-N11	4.70	1.40	1.34
2	A	532	P16	C22-C27	4.94	1.45	1.40
2	A	532	P16	C22-C23	5.69	1.46	1.40
2	A	532	P16	C18-N19	5.90	1.47	1.38
2	B	532	P16	C22-C27	5.93	1.46	1.40
2	B	532	P16	C22-C23	6.05	1.46	1.40
2	B	532	P16	C18-N19	6.19	1.47	1.38

All (8) bond angle outliers are listed below:

Mol	Chain	Res	Type	Atoms	Z	Observed(°)	Ideal(°)
2	B	532	P16	N11-C10-N15	-2.19	124.20	126.62
2	A	532	P16	N11-C10-N15	-2.14	124.25	126.62

Continued on next page...

Continued from previous page...

Mol	Chain	Res	Type	Atoms	Z	Observed(°)	Ideal(°)
2	B	532	P16	C13-C14-N15	-2.10	120.47	123.37
2	A	532	P16	C13-C14-N15	-2.04	120.55	123.37
2	B	532	P16	C16-C17-C18	2.65	120.45	116.60
2	A	532	P16	C16-C17-C18	2.66	120.46	116.60
2	A	532	P16	C10-N15-C14	3.56	119.38	115.09
2	B	532	P16	C10-N15-C14	3.69	119.53	115.09

There are no chirality outliers.

There are no torsion outliers.

There are no ring outliers.

1 monomer is involved in 3 short contacts:

Mol	Chain	Res	Type	Clashes	Symm-Clashes
2	A	532	P16	3	0

5.7 Other polymers [i](#)

There are no such residues in this entry.

5.8 Polymer linkage issues [i](#)

There are no chain breaks in this entry.

6 Fit of model and data ⓘ

6.1 Protein, DNA and RNA chains ⓘ

In the following table, the column labelled ‘#RSRZ> 2’ contains the number (and percentage) of RSRZ outliers, followed by percent RSRZ outliers for the chain as percentile scores relative to all X-ray entries and entries of similar resolution. The OWAB column contains the minimum, median, 95th percentile and maximum values of the occupancy-weighted average B-factor per residue. The column labelled ‘Q< 0.9’ lists the number of (and percentage) of residues with an average occupancy less than 0.9.

Mol	Chain	Analysed	<RSRZ>	#RSRZ>2	OWAB(Å ²)	Q<0.9
1	A	272/287 (94%)	-0.14	11 (4%) 42 44	5, 15, 40, 59	0
1	B	272/287 (94%)	0.22	29 (10%) 8 8	7, 20, 63, 70	0
All	All	544/574 (94%)	0.04	40 (7%) 17 18	5, 17, 55, 70	0

All (40) RSRZ outliers are listed below:

Mol	Chain	Res	Type	RSRZ
1	B	280	TRP	9.0
1	B	295	ASP	7.3
1	B	329	PRO	6.1
1	A	295	ASP	6.0
1	A	294	GLU	5.9
1	B	282	LYS	5.4
1	B	259	THR	5.3
1	B	294	GLU	5.3
1	B	257	GLU	5.3
1	B	328	PRO	5.2
1	B	284	SER	5.1
1	B	327	GLU	4.9
1	B	256	MET	4.6
1	B	283	TYR	4.0
1	B	262	THR	3.8
1	B	326	ARG	3.7
1	B	260	ASP	3.5
1	A	252	ASP	3.4
1	A	417	GLY	3.4
1	B	279	VAL	3.3
1	B	281	LYS	3.3
1	A	523	ASP	3.3
1	B	263	MET	3.1
1	A	269	GLY	3.0

Continued on next page...

Continued from previous page...

Mol	Chain	Res	Type	RSRZ
1	B	523	ASP	3.0
1	B	258	ARG	3.0
1	A	296	THR	3.0
1	B	325	THR	2.9
1	A	420	PHE	2.7
1	B	264	LYS	2.7
1	B	285	LEU	2.6
1	B	293	LYS	2.6
1	B	261	ILE	2.6
1	B	252	ASP	2.5
1	A	435	PHE	2.4
1	B	269	GLY	2.4
1	B	265	HIS	2.3
1	A	258	ARG	2.2
1	A	293	LYS	2.1
1	B	301	GLU	2.0

6.2 Non-standard residues in protein, DNA, RNA chains [i](#)

There are no non-standard protein/DNA/RNA residues in this entry.

6.3 Carbohydrates [i](#)

There are no carbohydrates in this entry.

6.4 Ligands [i](#)

In the following table, the Atoms column lists the number of modelled atoms in the group and the number defined in the chemical component dictionary. LLDF column lists the quality of electron density of the group with respect to its neighbouring residues in protein, DNA or RNA chains. The B-factors column lists the minimum, median, 95th percentile and maximum values of B factors of atoms in the group. The column labelled 'Q< 0.9' lists the number of atoms with occupancy less than 0.9.

Mol	Type	Chain	Res	Atoms	RSCC	RSR	LLDF	B-factors(\AA^2)	Q<0.9
2	P16	A	532	29/29	0.88	0.15	1.62	10,16,29,46	0
2	P16	B	532	29/29	0.80	0.16	0.97	22,27,38,49	0

6.5 Other polymers

There are no such residues in this entry.