



Full wwPDB X-ray Structure Validation Report ⓘ

Feb 1, 2016 – 02:14 AM GMT

PDB ID : 2G50
Title : The location of the allosteric amino acid binding site of muscle pyruvate kinase.
Authors : Holyoak, T.; Williams, R.; Fenton, A.W.
Deposited on : 2006-02-22
Resolution : 1.65 Å(reported)

This is a Full wwPDB X-ray Structure Validation Report for a publicly released PDB entry.
We welcome your comments at validation@mail.wwpdb.org
A user guide is available at
<http://wwpdb.org/validation/2016/XrayValidationReportHelp>
with specific help available everywhere you see the ⓘ symbol.

The following versions of software and data (see [references ⓘ](#)) were used in the production of this report:

MolProbity : 4.02b-467
Mogul : 1.7 (RC4), CSD as536be (2015)
Xtriage (Phenix) : 1.9-1692
EDS : rb-20026688
Percentile statistics : 20151230.v01 (using entries in the PDB archive December 30th 2015)
Refmac : 5.8.0135
CCP4 : 6.5.0
Ideal geometry (proteins) : Engh & Huber (2001)
Ideal geometry (DNA, RNA) : Parkinson et al. (1996)
Validation Pipeline (wwPDB-VP) : trunk26865

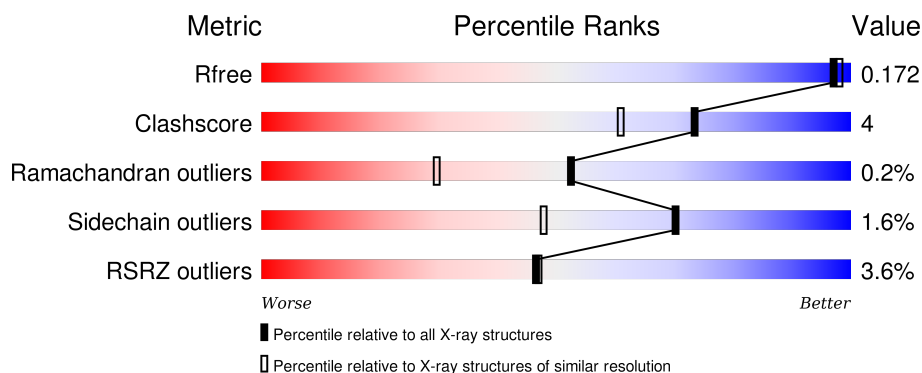
1 Overall quality at a glance ⓘ

The following experimental techniques were used to determine the structure:

X-RAY DIFFRACTION

The reported resolution of this entry is 1.65 Å.

Percentile scores (ranging between 0-100) for global validation metrics of the entry are shown in the following graphic. The table shows the number of entries on which the scores are based.



Metric	Whole archive (#Entries)	Similar resolution (#Entries, resolution range(Å))
R_{free}	91344	1226 (1.66-1.66)
Clashscore	102246	1323 (1.66-1.66)
Ramachandran outliers	100387	1295 (1.66-1.66)
Sidechain outliers	100360	1295 (1.66-1.66)
RSRZ outliers	91569	1227 (1.66-1.66)

The table below summarises the geometric issues observed across the polymeric chains and their fit to the electron density. The red, orange, yellow and green segments on the lower bar indicate the fraction of residues that contain outliers for ≥ 3 , 2, 1 and 0 types of geometric quality criteria. A grey segment represents the fraction of residues that are not modelled. The numeric value for each fraction is indicated below the corresponding segment, with a dot representing fractions $\leq 5\%$. The upper red bar (where present) indicates the fraction of residues that have poor fit to the electron density. The numeric value is given above the bar.

Mol	Chain	Length	Quality of chain
1	A	530	<div> <div>2%</div> <div>90%</div> <div>7%</div> <div>••</div> </div>
1	B	530	<div> <div>7%</div> <div>87%</div> <div>9%</div> <div>•</div> </div>
1	C	530	<div> <div>4%</div> <div>87%</div> <div>9%</div> <div>••</div> </div>
1	D	530	<div> <div>2%</div> <div>90%</div> <div>8%</div> <div>••</div> </div>
1	E	530	<div> <div>%</div> <div>90%</div> <div>8%</div> <div>•</div> </div>

Continued on next page...

Continued from previous page...

Mol	Chain	Length	Quality of chain
1	F	530	
1	G	530	
1	H	530	

The following table lists non-polymeric compounds, carbohydrate monomers and non-standard residues in protein, DNA, RNA chains that are outliers for geometric or electron-density-fit criteria:

Mol	Type	Chain	Res	Chirality	Geometry	Clashes	Electron density
6	PYR	A	600	-	-	-	X
6	PYR	B	600	-	-	-	X
6	PYR	D	600	-	-	-	X
6	PYR	E	600	-	-	-	X
6	PYR	G	600	-	-	-	X
6	PYR	H	600	-	-	-	X
7	EDO	A	6051	-	-	-	X
7	EDO	B	6032	-	-	-	X
7	EDO	B	6048	-	-	-	X
7	EDO	D	6017	-	-	X	X
7	EDO	D	6040	-	-	-	X
7	EDO	E	6038	-	-	-	X
7	EDO	E	6045	-	-	-	X
7	EDO	E	6046	-	-	-	X
7	EDO	G	6016	-	-	-	X
7	EDO	H	6034	-	-	-	X
7	EDO	H	6054	-	-	-	X
8	ETE	B	6018	-	-	X	X
9	GOL	A	6002	-	-	-	X
9	GOL	A	6201	-	-	-	X
9	GOL	A	6301	-	-	-	X
9	GOL	B	6007	-	-	-	X
9	GOL	B	6302	-	-	-	X
9	GOL	C	6055	-	-	-	X
9	GOL	C	6056	-	-	-	X
9	GOL	C	6203	-	-	-	X
9	GOL	C	6303	-	-	-	X
9	GOL	D	6204	-	-	-	X
9	GOL	D	6304	-	-	-	X
9	GOL	E	6031	-	-	-	X
9	GOL	E	6205	-	-	-	X
9	GOL	E	6305	-	-	-	X

Continued on next page...

Continued from previous page...

Mol	Type	Chain	Res	Chirality	Geometry	Clashes	Electron density
9	GOL	F	6001	-	-	-	X
9	GOL	F	6005	-	-	-	X
9	GOL	F	6010	-	-	-	X
9	GOL	F	6057	-	-	-	X
9	GOL	F	6206	-	-	-	X
9	GOL	F	6306	-	-	-	X
9	GOL	G	6207	-	-	-	X
9	GOL	G	6307	-	-	-	X
9	GOL	H	6006	-	-	-	X
9	GOL	H	6008	-	-	-	X
9	GOL	H	6208	-	-	-	X
9	GOL	H	6308	-	-	-	X

2 Entry composition [i](#)

There are 10 unique types of molecules in this entry. The entry contains 38184 atoms, of which 0 are hydrogens and 0 are deuteriums.

In the tables below, the ZeroOcc column contains the number of atoms modelled with zero occupancy, the AltConf column contains the number of residues with at least one atom in alternate conformation and the Trace column contains the number of residues modelled with at most 2 atoms.

- Molecule 1 is a protein called Pyruvate kinase isozymes M1/M2.

Mol	Chain	Residues	Atoms					ZeroOcc	AltConf	Trace
1	A	519	Total	C	N	O	S	0	26	0
			4134	2617	726	758	33			
1	B	511	Total	C	N	O	S	0	27	0
			4102	2598	720	755	29			
1	C	512	Total	C	N	O	S	0	26	0
			4116	2601	727	757	31			
1	D	521	Total	C	N	O	S	0	25	0
			4162	2627	737	769	29			
1	E	521	Total	C	N	O	S	0	30	0
			4187	2656	734	767	30			
1	F	515	Total	C	N	O	S	0	27	0
			4136	2617	729	761	29			
1	G	510	Total	C	N	O	S	0	15	0
			4015	2535	709	742	29			
1	H	519	Total	C	N	O	S	0	20	0
			4116	2599	727	760	30			

There are 24 discrepancies between the modelled and reference sequences:

Chain	Residue	Modelled	Actual	Comment	Reference
A	29	LYS	MET	SEE REMARK 999	UNP P11974
A	400	ALA	SER	SEE REMARK 999	UNP P11974
A	403	GLN	HIS	SEE REMARK 999	UNP P11974
B	29	LYS	MET	SEE REMARK 999	UNP P11974
B	400	ALA	SER	SEE REMARK 999	UNP P11974
B	403	GLN	HIS	SEE REMARK 999	UNP P11974
C	29	LYS	MET	SEE REMARK 999	UNP P11974
C	400	ALA	SER	SEE REMARK 999	UNP P11974
C	403	GLN	HIS	SEE REMARK 999	UNP P11974
D	29	LYS	MET	SEE REMARK 999	UNP P11974
D	400	ALA	SER	SEE REMARK 999	UNP P11974
D	403	GLN	HIS	SEE REMARK 999	UNP P11974
E	29	LYS	MET	SEE REMARK 999	UNP P11974

Continued on next page...

Continued from previous page...

Chain	Residue	Modelled	Actual	Comment	Reference
E	400	ALA	SER	SEE REMARK 999	UNP P11974
E	403	GLN	HIS	SEE REMARK 999	UNP P11974
F	29	LYS	MET	SEE REMARK 999	UNP P11974
F	400	ALA	SER	SEE REMARK 999	UNP P11974
F	403	GLN	HIS	SEE REMARK 999	UNP P11974
G	29	LYS	MET	SEE REMARK 999	UNP P11974
G	400	ALA	SER	SEE REMARK 999	UNP P11974
G	403	GLN	HIS	SEE REMARK 999	UNP P11974
H	29	LYS	MET	SEE REMARK 999	UNP P11974
H	400	ALA	SER	SEE REMARK 999	UNP P11974
H	403	GLN	HIS	SEE REMARK 999	UNP P11974

- Molecule 2 is MANGANESE (II) ION (three-letter code: MN) (formula: Mn).

Mol	Chain	Residues	Atoms	ZeroOcc	AltConf
2	G	1	Total Mn 1 1	0	0
2	D	1	Total Mn 1 1	0	0
2	E	1	Total Mn 1 1	0	0
2	H	1	Total Mn 1 1	0	0
2	B	1	Total Mn 1 1	0	0
2	C	1	Total Mn 1 1	0	0
2	A	1	Total Mn 1 1	0	0
2	F	1	Total Mn 1 1	0	0

- Molecule 3 is POTASSIUM ION (three-letter code: K) (formula: K).

Mol	Chain	Residues	Atoms	ZeroOcc	AltConf
3	G	1	Total K 1 1	0	0
3	D	1	Total K 1 1	0	0
3	E	1	Total K 1 1	0	0

Continued on next page...

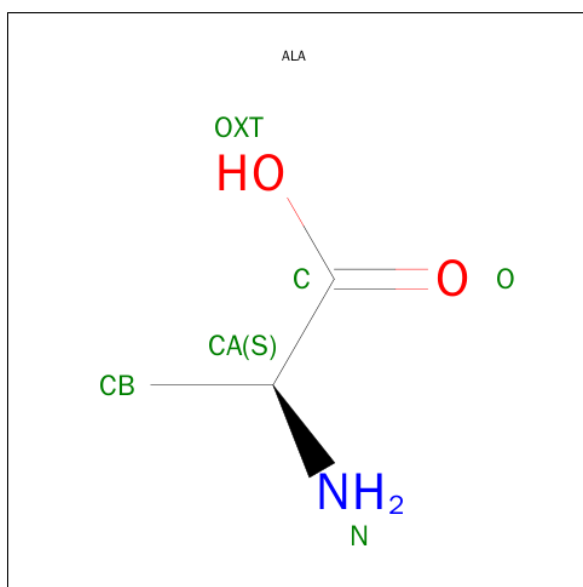
Continued from previous page...

Mol	Chain	Residues	Atoms	ZeroOcc	AltConf
3	H	1	Total K 1 1	0	0
3	B	1	Total K 1 1	0	0
3	C	1	Total K 1 1	0	0
3	A	1	Total K 1 1	0	0
3	F	1	Total K 1 1	0	0

- Molecule 4 is SODIUM ION (three-letter code: NA) (formula: Na).

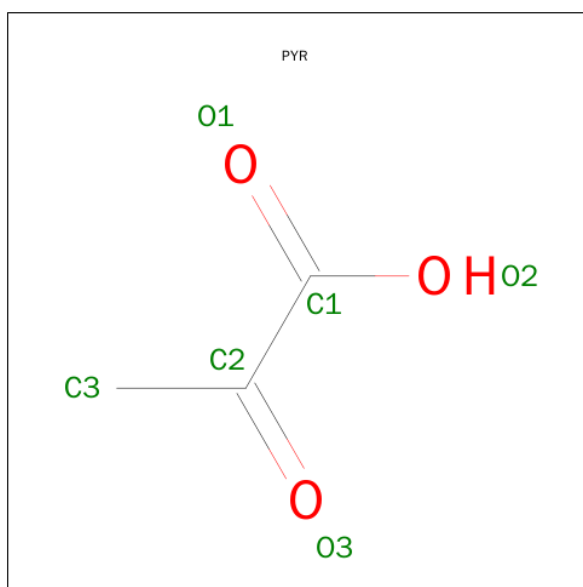
Mol	Chain	Residues	Atoms	ZeroOcc	AltConf
4	G	1	Total Na 1 1	0	0
4	D	2	Total Na 2 2	0	0
4	E	2	Total Na 2 2	0	0
4	H	2	Total Na 2 2	0	0
4	B	1	Total Na 1 1	0	0
4	C	1	Total Na 1 1	0	0
4	A	2	Total Na 2 2	0	0
4	F	1	Total Na 1 1	0	0

- Molecule 5 is ALANINE (three-letter code: ALA) (formula: C₃H₇NO₂).



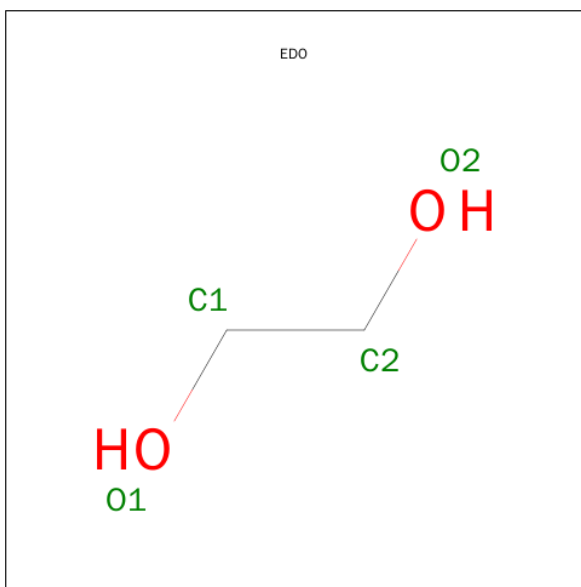
Mol	Chain	Residues	Atoms				ZeroOcc	AltConf
5	A	1	Total	C	N	O	0	0
			6	3	1	2		
5	B	1	Total	C	N	O	0	0
			6	3	1	2		
5	C	1	Total	C	N	O	0	0
			6	3	1	2		
5	D	1	Total	C	N	O	0	0
			6	3	1	2		
5	E	1	Total	C	N	O	0	0
			6	3	1	2		
5	F	1	Total	C	N	O	0	0
			6	3	1	2		
5	G	1	Total	C	N	O	0	0
			6	3	1	2		
5	H	1	Total	C	N	O	0	0
			6	3	1	2		

- Molecule 6 is PYRUVIC ACID (three-letter code: PYR) (formula: C₃H₄O₃).



Mol	Chain	Residues	Atoms			ZeroOcc	AltConf
6	A	1	Total	C	O	0	0
			6	3	3		
6	B	1	Total	C	O	0	0
			6	3	3		
6	C	1	Total	C	O	0	0
			6	3	3		
6	D	1	Total	C	O	0	0
			6	3	3		
6	E	1	Total	C	O	0	0
			6	3	3		
6	F	1	Total	C	O	0	0
			6	3	3		
6	G	1	Total	C	O	0	0
			6	3	3		
6	H	1	Total	C	O	0	0
			6	3	3		

- Molecule 7 is 1,2-ETHANEDIOL (three-letter code: EDO) (formula: C₂H₆O₂).



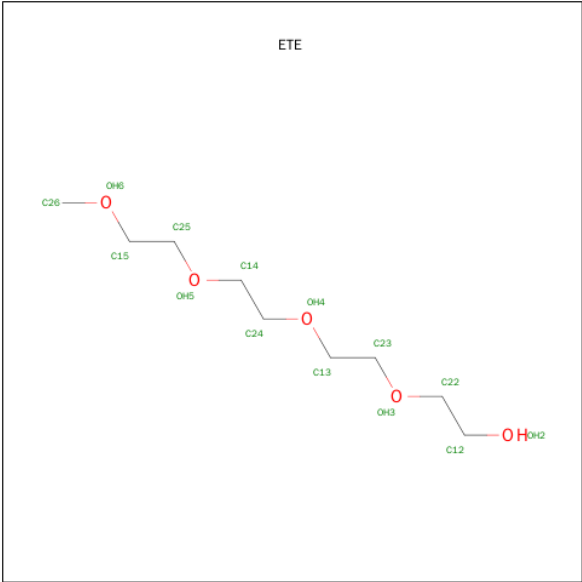
Mol	Chain	Residues	Atoms			ZeroOcc	AltConf
7	D	1	Total	C	O	0	0
			4	2	2		
7	F	1	Total	C	O	0	0
			4	2	2		
7	B	1	Total	C	O	0	0
			4	2	2		
7	C	1	Total	C	O	0	0
			4	2	2		
7	E	1	Total	C	O	0	0
			4	2	2		
7	G	1	Total	C	O	0	0
			4	2	2		
7	D	1	Total	C	O	0	0
			4	2	2		
7	B	1	Total	C	O	0	0
			4	2	2		
7	D	1	Total	C	O	0	0
			4	2	2		
7	H	1	Total	C	O	0	0
			4	2	2		
7	F	1	Total	C	O	0	0
			4	2	2		
7	H	1	Total	C	O	0	0
			4	2	2		
7	E	1	Total	C	O	0	0
			4	2	2		
7	E	1	Total	C	O	0	0
			4	2	2		

Continued on next page...

Continued from previous page...

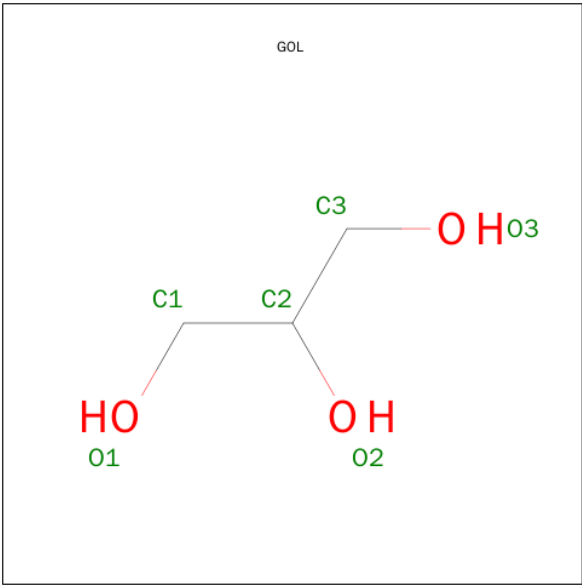
Mol	Chain	Residues	Atoms			ZeroOcc	AltConf
7	D	1	Total 4	C 2	O 2	0	0
7	H	1	Total 4	C 2	O 2	0	0
7	H	1	Total 4	C 2	O 2	0	0
7	A	1	Total 4	C 2	O 2	0	0
7	C	1	Total 4	C 2	O 2	0	0
7	E	1	Total 4	C 2	O 2	0	0
7	E	1	Total 4	C 2	O 2	0	0
7	B	1	Total 4	C 2	O 2	0	0
7	B	1	Total 4	C 2	O 2	0	0
7	E	1	Total 4	C 2	O 2	0	0
7	A	1	Total 4	C 2	O 2	0	0
7	A	1	Total 4	C 2	O 2	0	0
7	G	1	Total 4	C 2	O 2	0	0
7	H	1	Total 4	C 2	O 2	0	0
7	H	1	Total 4	C 2	O 2	0	0

- Molecule 8 is 2-{2-[2-2-(METHOXY-ETHOXY)-ETHOXY]-ETHOXY}-ETHANOL (three-letter code: ETE) (formula: C₉H₂₀O₅).



Mol	Chain	Residues	Atoms			ZeroOcc	AltConf
8	B	1	Total	C	O	0	0
			14	9	5		

- Molecule 9 is GLYCEROL (three-letter code: GOL) (formula: C₃H₈O₃).



Mol	Chain	Residues	Atoms			ZeroOcc	AltConf
9	A	1	Total	C	O	0	0
			6	3	3		
9	A	1	Total	C	O	0	0
			6	3	3		
9	B	1	Total	C	O	0	0
			6	3	3		

Continued on next page...

Continued from previous page...

Mol	Chain	Residues	Atoms			ZeroOcc	AltConf
9	B	1	Total 6	C 3	O 3	0	0
9	C	1	Total 6	C 3	O 3	0	0
9	C	1	Total 6	C 3	O 3	0	0
9	D	1	Total 6	C 3	O 3	0	0
9	D	1	Total 6	C 3	O 3	0	0
9	E	1	Total 6	C 3	O 3	0	0
9	E	1	Total 6	C 3	O 3	0	0
9	F	1	Total 6	C 3	O 3	0	0
9	F	1	Total 6	C 3	O 3	0	0
9	G	1	Total 6	C 3	O 3	0	0
9	G	1	Total 6	C 3	O 3	0	0
9	H	1	Total 6	C 3	O 3	0	0
9	H	1	Total 6	C 3	O 3	0	0
9	F	1	Total 6	C 3	O 3	0	0
9	A	1	Total 6	C 3	O 3	0	0
9	G	1	Total 6	C 3	O 3	0	0
9	F	1	Total 6	C 3	O 3	0	0
9	H	1	Total 6	C 3	O 3	0	0
9	B	1	Total 6	C 3	O 3	0	0
9	H	1	Total 6	C 3	O 3	0	0
9	F	1	Total 6	C 3	O 3	0	0

Continued on next page...

Continued from previous page...

Mol	Chain	Residues	Atoms			ZeroOcc	AltConf
9	E	1	Total	C	O	0	0
			6	3	3		
9	C	1	Total	C	O	0	0
			6	3	3		
9	C	1	Total	C	O	0	0
			6	3	3		
9	F	1	Total	C	O	0	0
			6	3	3		

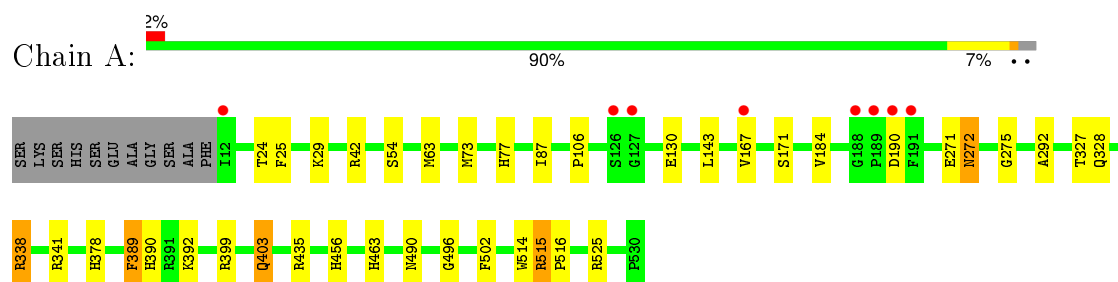
- Molecule 10 is water.

Mol	Chain	Residues	Atoms		ZeroOcc	AltConf
10	A	651	Total	O	0	0
			651	651		
10	B	517	Total	O	0	0
			517	517		
10	C	605	Total	O	0	0
			605	605		
10	D	649	Total	O	0	0
			649	649		
10	E	682	Total	O	0	0
			682	682		
10	F	605	Total	O	0	0
			605	605		
10	G	490	Total	O	0	0
			490	490		
10	H	595	Total	O	0	0
			595	595		

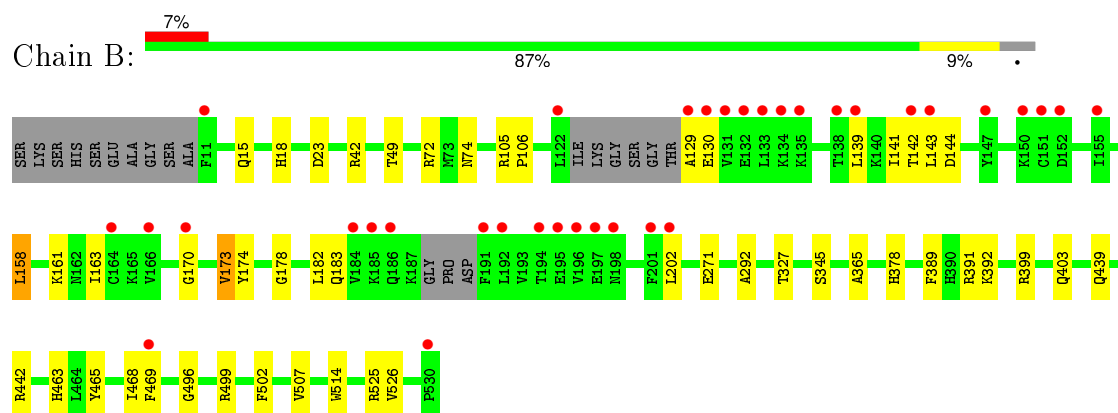
3 Residue-property plots [i](#)

These plots are drawn for all protein, RNA and DNA chains in the entry. The first graphic for a chain summarises the proportions of errors displayed in the second graphic. The second graphic shows the sequence view annotated by issues in geometry and electron density. Residues are color-coded according to the number of geometric quality criteria for which they contain at least one outlier: green = 0, yellow = 1, orange = 2 and red = 3 or more. A red dot above a residue indicates a poor fit to the electron density ($RSRZ > 2$). Stretches of 2 or more consecutive residues without any outlier are shown as a green connector. Residues present in the sample, but not in the model, are shown in grey.

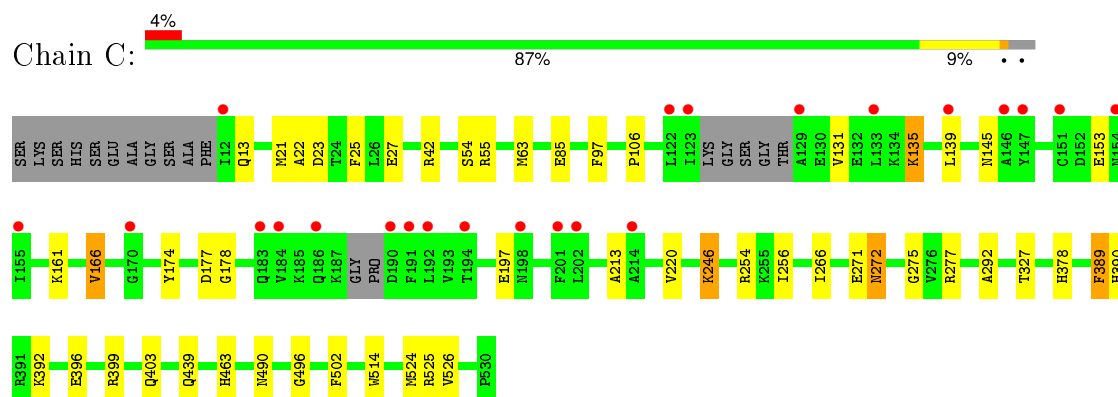
- Molecule 1: Pyruvate kinase isozymes M1/M2



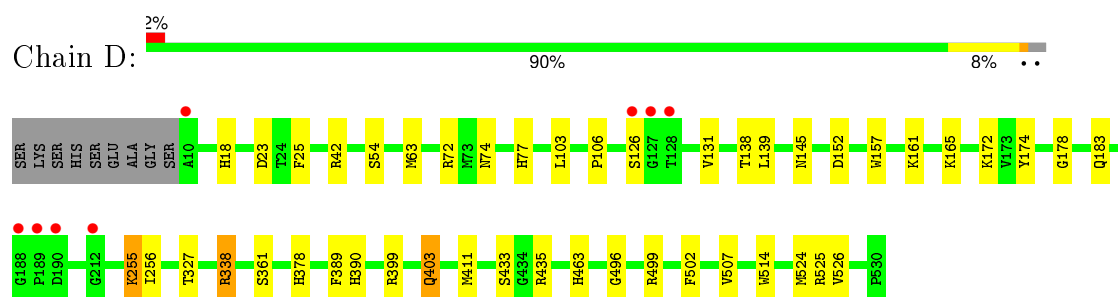
- Molecule 1: Pyruvate kinase isozymes M1/M2



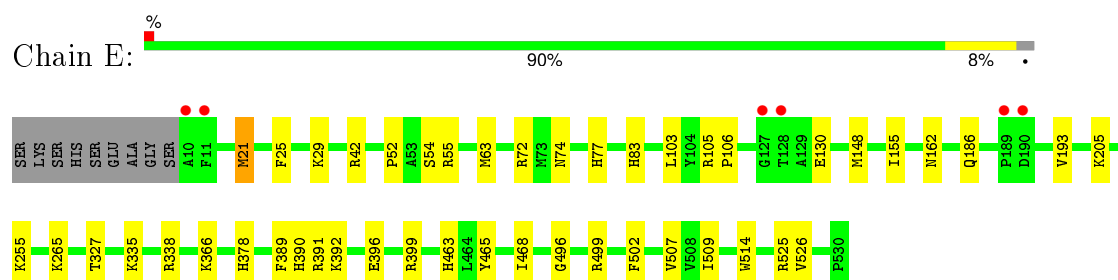
- Molecule 1: Pyruvate kinase isozymes M1/M2



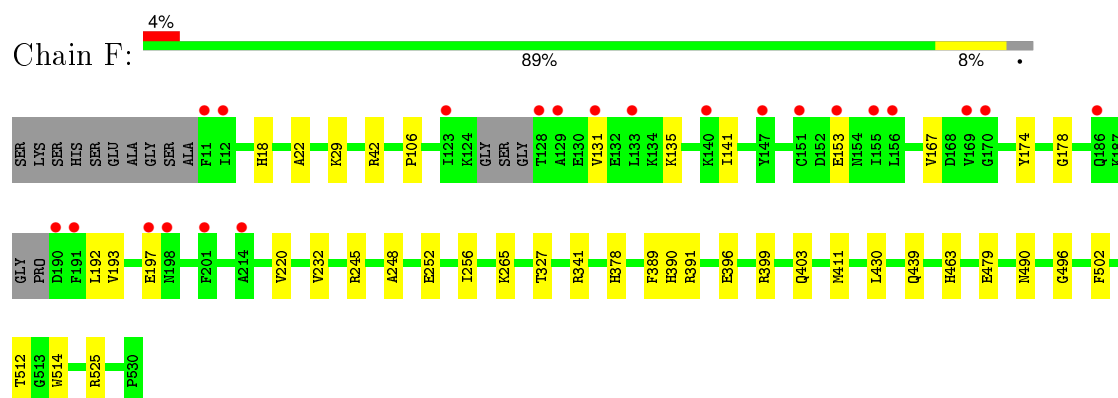
- Molecule 1: Pyruvate kinase isozymes M1/M2



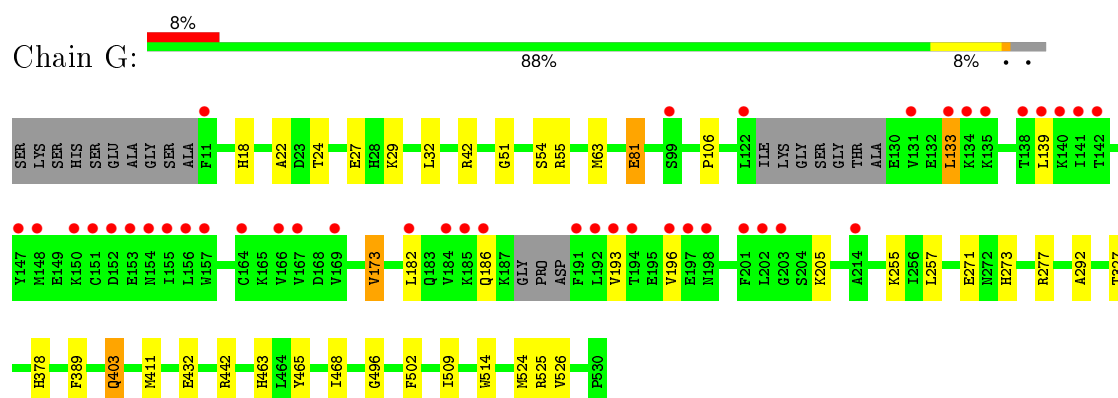
- Molecule 1: Pyruvate kinase isozymes M1/M2



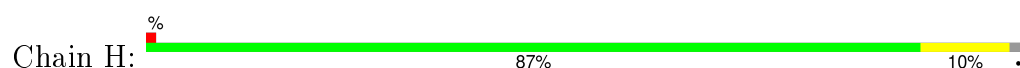
- Molecule 1: Pyruvate kinase isozymes M1/M2

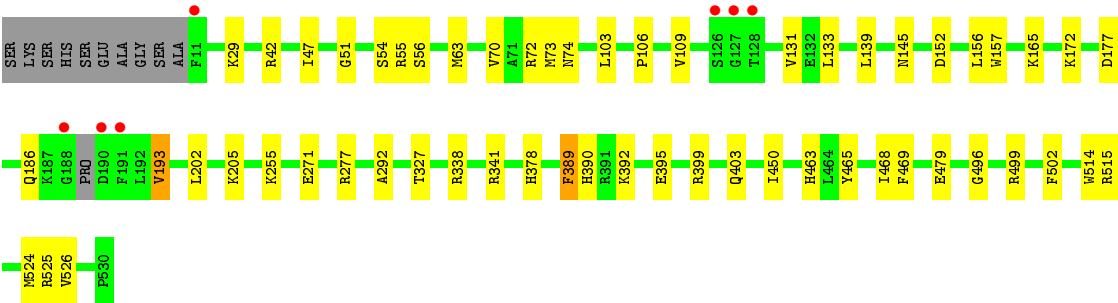


- Molecule 1: Pyruvate kinase isozymes M1/M2



- Molecule 1: Pyruvate kinase isozymes M1/M2





4 Data and refinement statistics

Property	Value	Source
Space group	P 1	Depositor
Cell constants a, b, c, α , β , γ	82.63Å 109.01Å 144.46Å 95.15° 93.45° 112.26°	Depositor
Resolution (Å)	76.47 – 1.65 76.46 – 1.65	Depositor EDS
% Data completeness (in resolution range)	92.1 (76.47-1.65) 89.1 (76.46-1.65)	Depositor EDS
R_{merge}	0.07	Depositor
R_{sym}	(Not available)	Depositor
$\langle I/\sigma(I) \rangle$ ¹	4.23 (at 1.65Å)	Xtriage
Refinement program	REFMAC 5.2.0019	Depositor
R, R_{free}	0.148 , 0.174 0.146 , 0.172	Depositor DCC
R_{free} test set	25590 reflections (5.30%)	DCC
Wilson B-factor (Å ²)	18.1	Xtriage
Anisotropy	0.046	Xtriage
Bulk solvent k_{sol} (e/Å ³), B_{sol} (Å ²)	0.36 , 52.2	EDS
Estimated twinning fraction	No twinning to report.	Xtriage
L-test for twinning ²	$\langle L \rangle = 0.50$, $\langle L^2 \rangle = 0.33$	Xtriage
Outliers	0 of 508412 reflections	Xtriage
F_o, F_c correlation	0.97	EDS
Total number of atoms	38184	wwPDB-VP
Average B, all atoms (Å ²)	15.0	wwPDB-VP

Xtriage's analysis on translational NCS is as follows: *The largest off-origin peak in the Patterson function is 3.00% of the height of the origin peak. No significant pseudotranslation is detected.*

¹Intensities estimated from amplitudes.

²Theoretical values of $\langle |L| \rangle$, $\langle L^2 \rangle$ for acentric reflections are 0.5, 0.375 respectively for untwinned datasets, and 0.333, 0.2 for perfectly twinned datasets.

5 Model quality

5.1 Standard geometry

Bond lengths and bond angles in the following residue types are not validated in this section: GOL, NA, PYR, MN, EDO, ETE, K

The Z score for a bond length (or angle) is the number of standard deviations the observed value is removed from the expected value. A bond length (or angle) with $|Z| > 5$ is considered an outlier worth inspection. RMSZ is the root-mean-square of all Z scores of the bond lengths (or angles).

Mol	Chain	Bond lengths		Bond angles	
		RMSZ	# $ Z > 5$	RMSZ	# $ Z > 5$
1	A	0.46	0/4278	0.60	0/5760
1	B	0.48	2/4240 (0.0%)	0.57	0/5708
1	C	0.49	1/4235 (0.0%)	0.59	0/5701
1	D	0.45	0/4285	0.58	0/5774
1	E	0.46	0/4328	0.58	0/5829
1	F	0.48	0/4268	0.59	0/5748
1	G	0.42	0/4119	0.54	0/5549
1	H	0.46	0/4224	0.58	0/5688
All	All	0.46	3/33977 (0.0%)	0.58	0/45757

All (3) bond length outliers are listed below:

Mol	Chain	Res	Type	Atoms	Z	Observed(Å)	Ideal(Å)
1	B	142	THR	C-N	8.55	1.53	1.34
1	B	144	ASP	C-O	5.59	1.33	1.23
1	C	135	LYS	CE-NZ	5.16	1.61	1.49

There are no bond angle outliers.

There are no chirality outliers.

There are no planarity outliers.

5.2 Too-close contacts

In the following table, the Non-H and H(model) columns list the number of non-hydrogen atoms and hydrogen atoms in the chain respectively. The H(added) column lists the number of hydrogen atoms added and optimized by MolProbity. The Clashes column lists the number of clashes within the asymmetric unit, whereas Symm-Clashes lists symmetry related clashes.

Mol	Chain	Non-H	H(model)	H(added)	Clashes	Symm-Clashes
1	A	4134	0	4316	32	0
1	B	4102	0	4250	39	0
1	C	4116	0	4253	41	0
1	D	4162	0	4294	35	0
1	E	4187	0	4356	47	0
1	F	4136	0	4284	34	0
1	G	4015	0	4132	28	0
1	H	4116	0	4245	42	0
2	A	1	0	0	0	0
2	B	1	0	0	0	0
2	C	1	0	0	0	0
2	D	1	0	0	0	0
2	E	1	0	0	0	0
2	F	1	0	0	0	0
2	G	1	0	0	0	0
2	H	1	0	0	0	0
3	A	1	0	0	0	0
3	B	1	0	0	0	0
3	C	1	0	0	0	0
3	D	1	0	0	0	0
3	E	1	0	0	0	0
3	F	1	0	0	0	0
3	G	1	0	0	0	0
3	H	1	0	0	0	0
4	A	2	0	0	0	0
4	B	1	0	0	0	0
4	C	1	0	0	0	0
4	D	2	0	0	0	0
4	E	2	0	0	0	0
4	F	1	0	0	0	0
4	G	1	0	0	0	0
4	H	2	0	0	0	0
5	A	6	0	4	1	0
5	B	6	0	4	1	0
5	C	6	0	4	1	0
5	D	6	0	4	1	0
5	E	6	0	4	1	0
5	F	6	0	4	1	0
5	G	6	0	4	1	0
5	H	6	0	4	1	0
6	A	6	0	3	0	0
6	B	6	0	3	0	0
6	C	6	0	3	0	0

Continued on next page...

Continued from previous page...

Mol	Chain	Non-H	H(model)	H(added)	Clashes	Symm-Clashes
6	D	6	0	3	0	0
6	E	6	0	3	0	0
6	F	6	0	3	0	0
6	G	6	0	3	0	0
6	H	6	0	3	0	0
7	A	12	0	18	0	0
7	B	16	0	24	3	0
7	C	8	0	12	2	0
7	D	16	0	24	4	0
7	E	24	0	36	6	0
7	F	8	0	12	2	0
7	G	8	0	12	0	0
7	H	24	0	36	3	0
8	B	14	0	20	8	0
9	A	18	0	24	1	0
9	B	18	0	24	0	0
9	C	24	0	32	1	0
9	D	12	0	16	0	0
9	E	18	0	24	2	0
9	F	36	0	48	4	0
9	G	18	0	24	0	0
9	H	24	0	32	3	0
10	A	651	0	0	4	0
10	B	517	0	0	9	0
10	C	605	0	0	9	0
10	D	649	0	0	6	0
10	E	682	0	0	10	0
10	F	605	0	0	7	0
10	G	490	0	0	1	0
10	H	595	0	0	7	0
All	All	38184	0	34604	278	0

The all-atom clashscore is defined as the number of clashes found per 1000 atoms (including hydrogen atoms). The all-atom clashscore for this structure is 4.

All (278) close contacts within the same asymmetric unit are listed below, sorted by their clash magnitude.

Atom-1	Atom-2	Interatomic distance (Å)	Clash overlap (Å)
1:B:469[B]:PHE:HZ	10:B:6759:HOH:O	1.32	1.12
1:E:391[B]:ARG:NH1	1:F:399[B]:ARG:HG2	1.64	1.10
1:E:186:GLN:HB3	1:E:193[B]:VAL:HG13	1.46	0.96

Continued on next page...

Continued from previous page...

Atom-1	Atom-2	Interatomic distance (Å)	Clash overlap (Å)
1:E:55:ARG:HH11	7:E:6045:EDO:H11	1.34	0.93
1:B:469[B]:PHE:CE2	1:B:499:ARG:NH1	2.38	0.91
1:D:42:ARG:HE	1:D:378:HIS:HD2	1.15	0.90
1:C:42:ARG:HE	1:C:378:HIS:HD2	1.15	0.89
1:E:42:ARG:HE	1:E:378:HIS:HD2	1.14	0.88
9:F:6010:GOL:H32	1:H:341:ARG:HH12	1.36	0.88
1:F:42:ARG:HE	1:F:378:HIS:HD2	1.19	0.88
1:B:72:ARG:HH12	8:B:6018:ETE:H222	1.36	0.88
1:C:439[B]:GLN:NE2	10:C:6624:HOH:O	1.96	0.87
1:B:42:ARG:HE	1:B:378:HIS:HD2	1.18	0.87
1:G:42:ARG:HE	1:G:378:HIS:HD2	1.20	0.86
1:A:42:ARG:HE	1:A:378:HIS:HD2	1.20	0.85
1:H:338[A]:ARG:NH2	10:H:7070:HOH:O	2.08	0.84
1:E:52:PRO:HB3	9:E:6031:GOL:H2	1.60	0.83
1:C:220:VAL:HG11	1:C:256[A]:ILE:CD1	2.09	0.83
1:B:469[B]:PHE:CZ	10:B:6759:HOH:O	2.14	0.82
1:B:365:ALA:HB1	8:B:6018:ETE:H142	1.59	0.82
1:F:220:VAL:HG11	1:F:256[A]:ILE:CD1	2.10	0.82
1:H:42:ARG:HE	1:H:378:HIS:HD2	1.25	0.81
1:H:186:GLN:HB3	1:H:193:VAL:HG13	1.61	0.81
1:A:73[B]:MET:SD	1:A:87:ILE:HD11	2.21	0.80
1:C:399[A]:ARG:NH1	10:C:7100:HOH:O	2.15	0.79
1:E:338[A]:ARG:NH2	10:E:2698:HOH:O	2.16	0.78
1:H:72:ARG:HH12	7:H:6034:EDO:H22	1.49	0.78
1:B:129:ALA:HA	1:B:130:GLU:HB3	1.64	0.78
1:F:245[A]:ARG:NH2	10:F:6928:HOH:O	2.17	0.77
1:H:499:ARG:HH22	9:H:6006:GOL:H2	1.49	0.76
1:D:72:ARG:HH12	7:D:6017:EDO:H22	1.50	0.75
1:B:72:ARG:HH12	8:B:6018:ETE:C22	2.00	0.75
1:G:186:GLN:HB3	1:G:193:VAL:HB	1.69	0.74
1:D:433:SER:OG	1:D:435[B]:ARG:HG2	1.88	0.73
1:F:341:ARG:HH22	7:F:6036:EDO:H22	1.53	0.72
1:B:105:ARG:HG2	7:B:6032:EDO:H12	1.71	0.72
1:E:21:MET:CE	1:E:391[B]:ARG:NH2	2.53	0.71
1:B:42:ARG:HE	1:B:378:HIS:CD2	2.06	0.71
1:E:21:MET:HE1	1:E:391[B]:ARG:HH21	1.55	0.71
1:E:526[A]:VAL:HG23	1:F:411:MET:SD	2.31	0.70
1:E:72:ARG:HH12	7:E:6038:EDO:H11	1.57	0.69
1:F:439[A]:GLN:NE2	10:F:7065:HOH:O	2.25	0.69
1:E:42:ARG:HE	1:E:378:HIS:CD2	2.04	0.69
1:C:42:ARG:HE	1:C:378:HIS:CD2	2.05	0.69

Continued on next page...

Continued from previous page...

Atom-1	Atom-2	Interatomic distance (Å)	Clash overlap (Å)
1:B:469[B]:PHE:HE2	1:B:499:ARG:NH1	1.91	0.68
1:D:42:ARG:HE	1:D:378:HIS:CD2	2.06	0.68
1:E:52:PRO:CB	9:E:6031:GOL:H2	2.22	0.68
1:C:463:HIS:HD2	5:C:6103:ALA:N	1.93	0.67
1:E:391[B]:ARG:HH12	1:F:399[B]:ARG:HG2	1.60	0.66
1:E:25[B]:PHE:CZ	1:E:392:LYS:HG2	2.30	0.66
1:B:173:VAL:HG13	1:B:182:LEU:HB2	1.75	0.66
1:B:129:ALA:HA	1:B:130:GLU:CB	2.25	0.66
1:E:55:ARG:NH1	7:E:6045:EDO:H11	2.09	0.66
1:B:399[A]:ARG:HG3	10:B:6848:HOH:O	1.96	0.66
1:A:42:ARG:HE	1:A:378:HIS:CD2	2.08	0.66
1:F:399[B]:ARG:HG3	10:F:6715:HOH:O	1.96	0.65
1:D:399[A]:ARG:NH1	10:D:6908:HOH:O	2.29	0.65
1:F:42:ARG:HE	1:F:378:HIS:CD2	2.09	0.64
1:E:399:ARG:NH1	10:E:3220:HOH:O	2.30	0.64
1:B:141:ILE:HG23	1:B:158:LEU:HD11	1.80	0.64
1:G:173:VAL:HG13	1:G:182:LEU:HB2	1.79	0.64
1:A:463:HIS:HD2	5:A:6101:ALA:N	1.96	0.63
1:G:463:HIS:HD2	5:G:6107:ALA:N	1.97	0.62
1:D:463:HIS:HD2	5:D:6104:ALA:N	1.96	0.62
1:F:463:HIS:HD2	5:F:6106:ALA:N	1.98	0.61
1:C:526[B]:VAL:HG23	1:D:411:MET:SD	2.40	0.61
1:B:463:HIS:HD2	5:B:6102:ALA:N	1.98	0.61
1:B:106:PRO:O	1:B:463:HIS:HE1	1.83	0.61
1:F:479:GLU:H	1:F:479:GLU:CD	2.02	0.61
1:C:97:PHE:CD1	9:C:6055:GOL:H2	2.36	0.61
1:D:338[A]:ARG:NH1	10:D:7092:HOH:O	2.34	0.60
1:H:106:PRO:O	1:H:463:HIS:HE1	1.84	0.60
1:E:21:MET:CE	1:E:391[B]:ARG:HH21	2.15	0.60
1:H:42:ARG:HE	1:H:378:HIS:CD2	2.13	0.60
1:C:524[A]:MET:HE2	1:D:524[A]:MET:HB3	1.84	0.59
1:E:463:HIS:HD2	5:E:6105:ALA:N	2.00	0.59
1:E:205[B]:LYS:NZ	10:E:3396:HOH:O	2.34	0.59
1:A:399[A]:ARG:NH1	1:B:23:ASP:OD1	2.36	0.59
1:C:220:VAL:HG11	1:C:256[A]:ILE:HD13	1.82	0.58
1:H:389:PHE:CE1	1:H:392:LYS:HG3	2.38	0.58
1:A:106:PRO:O	1:A:463:HIS:HE1	1.86	0.58
1:E:21:MET:HA	1:E:21:MET:CE	2.33	0.58
1:H:463:HIS:HD2	5:H:6108:ALA:N	2.01	0.58
1:G:42:ARG:HE	1:G:378:HIS:CD2	2.11	0.58
1:G:273[B]:HIS:CE1	1:G:277:ARG:NE	2.72	0.58

Continued on next page...

Continued from previous page...

Atom-1	Atom-2	Interatomic distance (Å)	Clash overlap (Å)
1:E:21:MET:HE1	1:E:391[B]:ARG:NH2	2.17	0.57
1:G:106:PRO:O	1:G:463:HIS:HE1	1.87	0.57
1:F:106:PRO:O	1:F:463:HIS:HE1	1.86	0.57
1:E:83:HIS:HD2	10:E:3460:HOH:O	1.87	0.57
7:E:6038:EDO:H12	7:E:6046:EDO:O2	2.04	0.57
1:C:135:LYS:HD3	1:C:197:GLU:O	2.03	0.57
1:A:272:ASN:HD22	1:A:275:GLY:H	1.52	0.57
10:F:7087:HOH:O	1:H:177:ASP:HB3	2.05	0.56
1:A:390:HIS:HD2	10:A:6607:HOH:O	1.88	0.56
1:E:21:MET:HE2	1:E:391[B]:ARG:NH2	2.21	0.56
1:D:72:ARG:NH1	7:D:6017:EDO:H22	2.21	0.56
1:A:167[B]:VAL:HG11	1:A:184:VAL:HG21	1.88	0.56
1:E:106:PRO:O	1:E:463:HIS:HE1	1.89	0.56
1:E:186:GLN:HB3	1:E:193[B]:VAL:CG1	2.30	0.55
1:H:255:LYS:HE2	10:H:7063:HOH:O	2.06	0.55
1:D:361:SER:HB3	7:D:6017:EDO:H11	1.88	0.55
1:C:106:PRO:O	1:C:463:HIS:HE1	1.89	0.55
1:D:106:PRO:O	1:D:463:HIS:HE1	1.90	0.55
1:D:145:ASN:HD22	1:D:157:TRP:HE1	1.55	0.54
1:B:496:GLY:HA3	1:B:502:PHE:CZ	2.42	0.54
1:F:141:ILE:HB	1:F:192:LEU:HB2	1.89	0.54
1:G:273[B]:HIS:HE1	1:G:277:ARG:NE	2.06	0.54
1:C:525:ARG:HD3	1:D:514:TRP:CE3	2.42	0.54
1:H:145:ASN:HD22	1:H:157:TRP:HE1	1.55	0.54
1:G:81:GLU:CD	1:G:81:GLU:H	2.10	0.53
1:G:18:HIS:HD2	10:G:3340:HOH:O	1.92	0.53
1:D:138[A]:THR:HG22	10:D:6766:HOH:O	2.09	0.53
1:F:341:ARG:HH22	7:F:6036:EDO:C2	2.21	0.53
1:D:255[A]:LYS:HE2	1:D:256:ILE:HD13	1.91	0.53
1:E:509:ILE:CD1	1:E:526[B]:VAL:HG12	2.38	0.53
1:A:525:ARG:HD3	1:B:514:TRP:CE3	2.44	0.53
1:A:73[B]:MET:SD	1:A:87:ILE:CD1	2.94	0.53
1:A:272:ASN:ND2	1:A:275:GLY:H	2.07	0.53
1:B:170:GLY:HA2	1:B:183:GLN:HE21	1.74	0.53
1:C:22:ALA:HB1	1:C:27[B]:GLU:HB3	1.91	0.53
1:C:55[A]:ARG:NH2	1:C:85:GLU:HB3	2.24	0.53
1:C:131:VAL:HG13	1:C:153:GLU:HG3	1.90	0.53
1:B:15:GLN:NE2	10:B:6886:HOH:O	2.42	0.52
1:H:399[A]:ARG:NH1	10:H:7074:HOH:O	2.42	0.52
7:B:6032:EDO:C1	10:B:6758:HOH:O	2.58	0.52
1:D:18:HIS:HD2	10:D:6587:HOH:O	1.93	0.52

Continued on next page...

Continued from previous page...

Atom-1	Atom-2	Interatomic distance (Å)	Clash overlap (Å)
1:A:496:GLY:HA3	1:A:502:PHE:CZ	2.45	0.52
1:E:105:ARG:NE	10:E:4823:HOH:O	2.35	0.52
1:B:72:ARG:NH1	8:B:6018:ETE:H222	2.15	0.52
1:F:174:TYR:HB3	1:F:178:GLY:HA2	1.92	0.52
1:H:277[B]:ARG:NH1	10:H:7038:HOH:O	2.42	0.51
1:E:21:MET:HA	1:E:21:MET:HE3	1.93	0.51
1:F:390:HIS:HD2	10:F:7004:HOH:O	1.93	0.51
1:G:496:GLY:HA3	1:G:502:PHE:CZ	2.45	0.51
1:H:496:GLY:HA3	1:H:502:PHE:CZ	2.46	0.51
1:C:496:GLY:HA3	1:C:502:PHE:CZ	2.46	0.51
1:D:390:HIS:HD2	10:D:6942:HOH:O	1.93	0.51
1:A:77:HIS:HD2	10:A:6678:HOH:O	1.93	0.51
1:F:220:VAL:HG11	1:F:256[A]:ILE:HD11	1.92	0.50
1:G:514:TRP:CE3	1:H:525:ARG:HD3	2.45	0.50
1:E:525:ARG:HD3	1:F:514:TRP:CE3	2.47	0.50
1:H:390:HIS:HD2	10:H:6538:HOH:O	1.95	0.50
1:E:390:HIS:HD2	10:E:2682:HOH:O	1.93	0.50
1:E:77:HIS:O	1:E:83:HIS:HE1	1.94	0.50
1:H:74:ASN:HD22	7:H:6034:EDO:H21	1.77	0.50
1:B:507[A]:VAL:CG1	1:B:526[A]:VAL:HG13	2.42	0.50
1:C:166:VAL:HG13	1:C:213:ALA:HB1	1.94	0.50
1:C:220:VAL:HG11	1:C:256[A]:ILE:HD11	1.93	0.50
1:F:479:GLU:N	1:F:479:GLU:CD	2.65	0.50
1:G:271:GLU:HB3	1:G:292:ALA:HB3	1.94	0.50
1:C:177:ASP:HB3	10:C:7056:HOH:O	2.12	0.50
1:B:465:TYR:HB2	1:B:468:ILE:HD12	1.93	0.50
1:C:490[B]:ASN:ND2	10:C:6992:HOH:O	2.44	0.50
1:C:272:ASN:ND2	1:C:275:GLY:H	2.10	0.49
1:G:54:SER:HB2	1:G:63[B]:MET:SD	2.53	0.49
1:C:390:HIS:HD2	10:C:6579:HOH:O	1.95	0.49
1:E:514:TRP:CE3	1:F:525:ARG:HD3	2.47	0.49
1:F:496:GLY:HA3	1:F:502:PHE:CZ	2.48	0.49
1:A:73[B]:MET:SD	1:A:87:ILE:CG1	3.01	0.49
7:B:6032:EDO:H11	10:B:6758:HOH:O	2.13	0.49
1:A:167[B]:VAL:HG13	1:A:171:SER:HB2	1.95	0.49
1:B:143:LEU:HD11	1:B:163:ILE:HG22	1.94	0.49
1:H:271:GLU:HB3	1:H:292:ALA:HB3	1.94	0.48
1:G:411:MET:SD	1:H:526[B]:VAL:HG23	2.53	0.48
1:D:496:GLY:HA3	1:D:502:PHE:CZ	2.47	0.48
1:B:18:HIS:HD2	10:B:6798:HOH:O	1.97	0.48
1:F:135:LYS:HG3	1:F:197:GLU:O	2.14	0.48

Continued on next page...

Continued from previous page...

Atom-1	Atom-2	Interatomic distance (Å)	Clash overlap (Å)
1:G:525:ARG:HD3	1:H:514:TRP:CE3	2.49	0.48
1:B:74:ASN:HB3	8:B:6018:ETE:H131	1.96	0.48
1:A:378:HIS:CD2	9:A:6002:GOL:H32	2.49	0.48
1:A:514:TRP:CE3	1:B:525:ARG:HD3	2.49	0.47
1:E:52:PRO:HD2	1:E:366[B]:LYS:HZ2	1.79	0.47
1:E:496:GLY:HA3	1:E:502:PHE:CZ	2.49	0.47
1:D:54:SER:HB2	1:D:63[A]:MET:SD	2.55	0.47
1:H:131:VAL:HG21	1:H:152:ASP:HA	1.96	0.47
1:E:509:ILE:HD13	1:E:526[B]:VAL:HG12	1.96	0.47
1:C:174:TYR:HB3	1:C:178:GLY:HA2	1.96	0.47
1:C:54:SER:HB2	1:C:63[B]:MET:SD	2.55	0.46
1:C:399[B]:ARG:HD3	1:D:23:ASP:OD1	2.15	0.46
1:A:167[B]:VAL:CG1	1:A:184:VAL:HG21	2.45	0.46
1:E:105:ARG:NH1	10:E:4823:HOH:O	2.45	0.46
1:B:143:LEU:HD13	1:B:161:LYS:HA	1.97	0.46
1:D:174:TYR:HB3	1:D:178:GLY:HA2	1.98	0.46
1:E:366[B]:LYS:NZ	7:E:6046:EDO:O1	2.27	0.46
1:C:272:ASN:HD22	1:C:275:GLY:H	1.63	0.46
1:H:51:GLY:O	1:H:55:ARG:HG3	2.16	0.46
1:D:403:GLN:H	1:D:403:GLN:NE2	2.14	0.45
1:G:524[A]:MET:HB3	1:H:524[A]:MET:HE2	1.97	0.45
1:F:490:ASN:ND2	10:F:6858:HOH:O	2.47	0.45
1:F:430:LEU:HD22	1:F:512:THR:HG22	1.98	0.45
1:D:507[B]:VAL:CG1	1:D:526[B]:VAL:CG2	2.94	0.45
1:D:255[A]:LYS:HG3	1:D:256:ILE:N	2.32	0.45
1:B:271:GLU:HB3	1:B:292:ALA:HB3	1.99	0.45
1:C:246[B]:LYS:NZ	10:C:6723:HOH:O	2.46	0.45
1:A:143[B]:LEU:HD13	1:A:190:ASP:O	2.16	0.45
1:A:435:ARG:NH2	10:A:7127:HOH:O	2.50	0.45
1:A:29[B]:LYS:HE3	1:A:29[B]:LYS:HB3	1.82	0.44
1:C:271:GLU:HB3	1:C:292:ALA:HB3	1.98	0.44
1:G:273[B]:HIS:CE1	1:G:277:ARG:HE	2.35	0.44
1:G:465:TYR:HB2	1:G:468:ILE:HD12	1.99	0.44
1:G:133:LEU:HB3	1:G:196:VAL:HG21	1.99	0.44
1:B:439[B]:GLN:HE22	1:B:442:ARG:HH11	1.65	0.44
1:E:265:LYS:HD3	1:E:265:LYS:HA	1.90	0.44
1:C:389:PHE:CE1	1:C:392:LYS:HG3	2.51	0.44
1:A:54:SER:HB2	1:A:63[A]:MET:SD	2.58	0.44
1:C:23:ASP:CG	1:D:399[B]:ARG:HH11	2.20	0.44
1:G:524[A]:MET:HE2	1:H:524[A]:MET:HB3	1.99	0.44
1:C:13:GLN:HE22	1:C:21[B]:MET:CE	2.31	0.44

Continued on next page...

Continued from previous page...

Atom-1	Atom-2	Interatomic distance (Å)	Clash overlap (Å)
1:H:465:TYR:HB2	1:H:468:ILE:HD12	2.00	0.44
1:F:29:LYS:HE3	1:F:29:LYS:HB3	1.82	0.44
1:C:390:HIS:HE1	10:C:6524:HOH:O	1.99	0.43
1:G:51:GLY:O	1:G:55:ARG:HB2	2.18	0.43
1:A:490[A]:ASN:ND2	10:A:7138:HOH:O	2.51	0.43
1:H:73:MET:CE	1:H:109:VAL:HG13	2.49	0.43
1:H:205:LYS:NZ	10:H:6762:HOH:O	2.51	0.43
7:C:6044:EDO:H12	10:C:6891:HOH:O	2.18	0.43
1:B:74:ASN:HD22	8:B:6018:ETE:H221	1.83	0.43
1:B:74:ASN:CB	8:B:6018:ETE:H131	2.49	0.43
1:H:103:LEU:O	9:H:6006:GOL:H31	2.18	0.43
1:C:23:ASP:OD1	1:D:399[B]:ARG:NE	2.50	0.43
1:A:25[A]:PHE:CZ	1:C:25[A]:PHE:CG	2.80	0.43
1:B:391[A]:ARG:HH22	1:B:392:LYS:HE2	1.84	0.43
1:D:74:ASN:HD22	7:D:6017:EDO:H21	1.83	0.43
1:G:403:GLN:H	1:G:403:GLN:NE2	2.17	0.43
1:E:148[B]:MET:HG2	10:E:3397:HOH:O	2.18	0.42
1:H:156:LEU:HD13	1:H:202:LEU:HD21	2.01	0.42
1:F:232:VAL:HG21	9:F:6001:GOL:H32	1.99	0.42
1:A:271:GLU:HB3	1:A:292:ALA:HB3	1.99	0.42
1:G:509:ILE:CD1	1:G:526[A]:VAL:HG12	2.49	0.42
1:H:378:HIS:CD2	9:H:6008:GOL:H32	2.54	0.42
1:E:29[A]:LYS:HE2	10:E:3655:HOH:O	2.18	0.42
9:F:6010:GOL:H32	1:H:341:ARG:NH1	2.19	0.42
1:D:161:LYS:HA	1:D:161:LYS:HD3	1.91	0.42
1:A:389:PHE:CE1	1:A:392:LYS:HG3	2.55	0.42
1:G:22:ALA:HB1	1:G:27[A]:GLU:HB3	2.01	0.42
1:E:465:TYR:HB2	1:E:468:ILE:HD12	2.02	0.42
1:D:77:HIS:HD2	10:D:6564:HOH:O	2.02	0.42
1:F:248:ALA:O	1:F:252:GLU:HG3	2.20	0.42
1:B:345[B]:SER:HB2	10:B:6597:HOH:O	2.18	0.42
1:G:273[B]:HIS:HE1	1:G:277:ARG:HE	1.66	0.42
1:B:391[B]:ARG:HD3	10:B:6784:HOH:O	2.20	0.42
1:B:174:TYR:HB3	1:B:178:GLY:HA2	2.02	0.42
1:C:514:TRP:CE3	1:D:525:ARG:HD3	2.54	0.42
1:E:54:SER:HB2	1:E:63[B]:MET:SD	2.60	0.42
1:C:145:ASN:HD21	1:C:161:LYS:NZ	2.18	0.42
1:F:131:VAL:HB	1:F:153:GLU:HG3	2.02	0.41
1:F:22:ALA:O	1:F:391:ARG:NH2	2.42	0.41
1:A:328:GLN:HE22	7:C:6044:EDO:H11	1.85	0.41
1:F:378:HIS:CD2	9:F:6005:GOL:H32	2.55	0.41

Continued on next page...

Continued from previous page...

Atom-1	Atom-2	Interatomic distance (Å)	Clash overlap (Å)
1:A:24:THR:HB	1:C:396:GLU:CD	2.41	0.41
1:H:133:LEU:HD11	1:H:202:LEU:HD22	2.02	0.41
1:H:395:GLU:HG3	10:H:6844:HOH:O	2.21	0.41
1:A:338[B]:ARG:HH22	1:A:341:ARG:HH12	1.68	0.41
1:C:524[A]:MET:HE1	1:D:524[A]:MET:SD	2.60	0.41
1:C:277:ARG:NH2	10:C:7101:HOH:O	2.54	0.41
1:H:54:SER:HB2	1:H:63[B]:MET:SD	2.60	0.41
1:C:254:ARG:CZ	1:C:266:ILE:HD12	2.50	0.41
1:D:131:VAL:HG11	1:D:152:ASP:HA	2.02	0.41
1:D:172:LYS:HE2	1:D:183[B]:GLN:NE2	2.36	0.41
1:E:507[A]:VAL:CG1	1:E:526[A]:VAL:HG13	2.51	0.41
1:G:29[A]:LYS:HE2	1:G:32:LEU:HD11	2.03	0.41
1:A:515:ARG:HB2	1:A:516:PRO:HD2	2.02	0.41
1:H:56:SER:OG	7:H:6054:EDO:H22	2.20	0.41
1:F:265:LYS:HD3	1:F:265:LYS:HA	1.90	0.41
1:H:47:ILE:HG12	1:H:70:VAL:HB	2.03	0.41
1:F:18:HIS:HD2	10:F:7002:HOH:O	2.03	0.41
1:H:450[B]:ILE:HD13	1:H:469:PHE:HB3	2.03	0.41
1:A:403:GLN:H	1:A:403:GLN:NE2	2.18	0.40
1:E:103:LEU:O	1:E:499:ARG:NH1	2.52	0.40
1:E:396:GLU:CD	1:G:24:THR:HB	2.41	0.40
1:H:515:ARG:HD3	1:H:515:ARG:HA	1.95	0.40
1:H:29[B]:LYS:HB3	1:H:29[B]:LYS:HE3	1.87	0.40
1:E:74:ASN:HD22	7:E:6038:EDO:H12	1.87	0.40
1:H:186:GLN:HB3	1:H:193:VAL:CG1	2.43	0.40
1:B:49:THR:HG21	8:B:6018:ETE:H132	2.03	0.40
1:E:255:LYS:HE2	10:E:3316:HOH:O	2.21	0.40
1:D:103:LEU:O	1:D:499:ARG:NH2	2.51	0.40

There are no symmetry-related clashes.

5.3 Torsion angles [i](#)

5.3.1 Protein backbone [i](#)

In the following table, the Percentiles column shows the percent Ramachandran outliers of the chain as a percentile score with respect to all X-ray entries followed by that with respect to entries of similar resolution.

The Analysed column shows the number of residues for which the backbone conformation was analysed, and the total number of residues.

Mol	Chain	Analysed	Favoured	Allowed	Outliers	Percentiles	
1	A	544/530 (103%)	538 (99%)	5 (1%)	1 (0%)	52	30
1	B	532/530 (100%)	524 (98%)	7 (1%)	1 (0%)	52	30
1	C	532/530 (100%)	524 (98%)	7 (1%)	1 (0%)	52	30
1	D	544/530 (103%)	537 (99%)	6 (1%)	1 (0%)	52	30
1	E	549/530 (104%)	541 (98%)	7 (1%)	1 (0%)	52	30
1	F	536/530 (101%)	527 (98%)	8 (2%)	1 (0%)	52	30
1	G	519/530 (98%)	509 (98%)	9 (2%)	1 (0%)	52	30
1	H	535/530 (101%)	527 (98%)	7 (1%)	1 (0%)	52	30
All	All	4291/4240 (101%)	4227 (98%)	56 (1%)	8 (0%)	52	30

All (8) Ramachandran outliers are listed below:

Mol	Chain	Res	Type
1	C	327	THR
1	D	327	THR
1	E	327	THR
1	F	327	THR
1	A	327	THR
1	B	327	THR
1	G	327	THR
1	H	327	THR

5.3.2 Protein sidechains ⓘ

In the following table, the Percentiles column shows the percent sidechain outliers of the chain as a percentile score with respect to all X-ray entries followed by that with respect to entries of similar resolution.

The Analysed column shows the number of residues for which the sidechain conformation was analysed, and the total number of residues.

Mol	Chain	Analysed	Rotameric	Outliers	Percentiles	
1	A	452/433 (104%)	444 (98%)	8 (2%)	66	43
1	B	447/433 (103%)	441 (99%)	6 (1%)	76	57
1	C	447/433 (103%)	439 (98%)	8 (2%)	66	43
1	D	451/433 (104%)	440 (98%)	11 (2%)	57	28
1	E	456/433 (105%)	449 (98%)	7 (2%)	72	51
1	F	451/433 (104%)	446 (99%)	5 (1%)	80	64

Continued on next page...

Continued from previous page...

Mol	Chain	Analysed	Rotameric	Outliers	Percentiles	
1	G	435/433 (100%)	424 (98%)	11 (2%)	55	26
1	H	445/433 (103%)	438 (98%)	7 (2%)	70	48
All	All	3584/3464 (104%)	3521 (98%)	63 (2%)	70	43

All (63) residues with a non-rotameric sidechain are listed below:

Mol	Chain	Res	Type
1	A	130	GLU
1	A	272	ASN
1	A	338[A]	ARG
1	A	338[B]	ARG
1	A	389	PHE
1	A	403	GLN
1	A	456	HIS
1	A	515	ARG
1	B	139	LEU
1	B	158	LEU
1	B	173	VAL
1	B	202	LEU
1	B	389	PHE
1	B	403	GLN
1	C	139	LEU
1	C	166	VAL
1	C	246[A]	LYS
1	C	246[B]	LYS
1	C	272	ASN
1	C	389	PHE
1	C	403[A]	GLN
1	C	403[B]	GLN
1	D	25[A]	PHE
1	D	25[B]	PHE
1	D	126	SER
1	D	139	LEU
1	D	165	LYS
1	D	255[A]	LYS
1	D	255[B]	LYS
1	D	338[A]	ARG
1	D	338[B]	ARG
1	D	389	PHE
1	D	403	GLN
1	E	21	MET

Continued on next page...

Continued from previous page...

Mol	Chain	Res	Type
1	E	130	GLU
1	E	155[A]	ILE
1	E	155[B]	ILE
1	E	162	ASN
1	E	335	LYS
1	E	389	PHE
1	F	167	VAL
1	F	193	VAL
1	F	389	PHE
1	F	403[A]	GLN
1	F	403[B]	GLN
1	G	81	GLU
1	G	133	LEU
1	G	139	LEU
1	G	173	VAL
1	G	205	LYS
1	G	255	LYS
1	G	257	LEU
1	G	389	PHE
1	G	403	GLN
1	G	432	GLU
1	G	442	ARG
1	H	139	LEU
1	H	165	LYS
1	H	172	LYS
1	H	193	VAL
1	H	389	PHE
1	H	403	GLN
1	H	479	GLU

Some sidechains can be flipped to improve hydrogen bonding and reduce clashes. All (88) such sidechains are listed below:

Mol	Chain	Res	Type
1	A	15	GLN
1	A	43	ASN
1	A	234	GLN
1	A	272	ASN
1	A	377	GLN
1	A	378	HIS
1	A	390	HIS
1	A	403	GLN
1	A	456	HIS

Continued on next page...

Continued from previous page...

Mol	Chain	Res	Type
1	A	457	GLN
1	A	463	HIS
1	A	494	ASN
1	B	15	GLN
1	B	18	HIS
1	B	43	ASN
1	B	145	ASN
1	B	183	GLN
1	B	377	GLN
1	B	378	HIS
1	B	463	HIS
1	B	494	ASN
1	C	13	GLN
1	C	15	GLN
1	C	18	HIS
1	C	43	ASN
1	C	145	ASN
1	C	234	GLN
1	C	251	HIS
1	C	263	ASN
1	C	272	ASN
1	C	377	GLN
1	C	378	HIS
1	C	390	HIS
1	C	463	HIS
1	C	494	ASN
1	D	18	HIS
1	D	43	ASN
1	D	145	ASN
1	D	198	ASN
1	D	234	GLN
1	D	377	GLN
1	D	378	HIS
1	D	390	HIS
1	D	403	GLN
1	D	456	HIS
1	D	463	HIS
1	D	494	ASN
1	E	18	HIS
1	E	43	ASN
1	E	83	HIS
1	E	162	ASN

Continued on next page...

Continued from previous page...

Mol	Chain	Res	Type
1	E	198	ASN
1	E	234	GLN
1	E	377	GLN
1	E	378	HIS
1	E	390	HIS
1	E	463	HIS
1	E	494	ASN
1	F	15	GLN
1	F	18	HIS
1	F	43	ASN
1	F	145	ASN
1	F	377	GLN
1	F	378	HIS
1	F	390	HIS
1	F	463	HIS
1	F	494	ASN
1	G	18	HIS
1	G	43	ASN
1	G	145	ASN
1	G	263	ASN
1	G	377	GLN
1	G	378	HIS
1	G	403	GLN
1	G	463	HIS
1	G	494	ASN
1	H	15	GLN
1	H	18	HIS
1	H	43	ASN
1	H	145	ASN
1	H	234	GLN
1	H	263	ASN
1	H	377	GLN
1	H	378	HIS
1	H	390	HIS
1	H	403	GLN
1	H	463	HIS
1	H	494	ASN

5.3.3 RNA ⓘ

There are no RNA molecules in this entry.

5.4 Non-standard residues in protein, DNA, RNA chains [i](#)

There are no non-standard protein/DNA/RNA residues in this entry.

5.5 Carbohydrates [i](#)

There are no carbohydrates in this entry.

5.6 Ligand geometry [i](#)

Of 102 ligands modelled in this entry, 28 are monoatomic - leaving 74 for Mogul analysis.

In the following table, the Counts columns list the number of bonds (or angles) for which Mogul statistics could be retrieved, the number of bonds (or angles) that are observed in the model and the number of bonds (or angles) that are defined in the chemical component dictionary. The Link column lists molecule types, if any, to which the group is linked. The Z score for a bond length (or angle) is the number of standard deviations the observed value is removed from the expected value. A bond length (or angle) with $|Z| > 2$ is considered an outlier worth inspection. RMSZ is the root-mean-square of all Z scores of the bond lengths (or angles).

Mol	Type	Chain	Res	Link	Bond lengths			Bond angles		
					Counts	RMSZ	$\# Z > 2$	Counts	RMSZ	$\# Z > 2$
6	PYR	A	600	2	2,5,5	1.88	1 (50%)	2,6,6	1.44	0
9	GOL	A	6002	-	5,5,5	0.24	0	5,5,5	0.31	0
7	EDO	A	6043	-	3,3,3	0.47	0	2,2,2	0.44	0
7	EDO	A	6050	-	3,3,3	0.49	0	2,2,2	0.24	0
7	EDO	A	6051	-	3,3,3	0.43	0	2,2,2	0.43	0
5	ALA	A	6101	-	2,5,5	0.55	0	0,6,6	0.00	-
9	GOL	A	6201	-	5,5,5	0.29	0	5,5,5	0.51	0
9	GOL	A	6301	-	5,5,5	0.27	0	5,5,5	0.66	0
6	PYR	B	600	2	2,5,5	1.74	1 (50%)	2,6,6	1.10	0
9	GOL	B	6007	-	5,5,5	0.30	0	5,5,5	0.32	0
7	EDO	B	6013	-	3,3,3	0.49	0	2,2,2	0.46	0
8	ETE	B	6018	-	13,13,13	0.48	0	12,12,12	0.34	0
7	EDO	B	6032	-	3,3,3	0.29	0	2,2,2	0.85	0
7	EDO	B	6047	-	3,3,3	0.46	0	2,2,2	0.44	0
7	EDO	B	6048	-	3,3,3	0.49	0	2,2,2	0.38	0
5	ALA	B	6102	-	2,5,5	0.36	0	0,6,6	0.00	-
9	GOL	B	6202	-	5,5,5	0.30	0	5,5,5	0.31	0
9	GOL	B	6302	-	5,5,5	0.28	0	5,5,5	0.55	0
6	PYR	C	600	2	2,5,5	2.05	1 (50%)	2,6,6	1.40	0
7	EDO	C	6014	-	3,3,3	0.49	0	2,2,2	0.52	0
7	EDO	C	6044	-	3,3,3	0.47	0	2,2,2	0.55	0
9	GOL	C	6055	-	5,5,5	0.31	0	5,5,5	0.70	0

Mol	Type	Chain	Res	Link	Bond lengths			Bond angles		
					Counts	RMSZ	# Z > 2	Counts	RMSZ	# Z > 2
9	GOL	C	6056	-	5,5,5	0.36	0	5,5,5	0.37	0
5	ALA	C	6103	-	2,5,5	0.66	0	0,6,6	0.00	-
9	GOL	C	6203	-	5,5,5	0.29	0	5,5,5	0.29	0
9	GOL	C	6303	-	5,5,5	0.24	0	5,5,5	0.68	0
6	PYR	D	600	2	2,5,5	2.05	1 (50%)	2,6,6	1.72	1 (50%)
7	EDO	D	6011	-	3,3,3	0.53	0	2,2,2	0.41	0
7	EDO	D	6017	-	3,3,3	0.60	0	2,2,2	0.16	0
7	EDO	D	6033	-	3,3,3	0.49	0	2,2,2	0.39	0
7	EDO	D	6040	-	3,3,3	0.51	0	2,2,2	0.37	0
5	ALA	D	6104	-	2,5,5	0.44	0	0,6,6	0.00	-
9	GOL	D	6204	-	5,5,5	0.24	0	5,5,5	0.60	0
9	GOL	D	6304	-	5,5,5	0.28	0	5,5,5	0.82	0
6	PYR	E	600	2	2,5,5	1.93	1 (50%)	2,6,6	1.43	0
7	EDO	E	6015	-	3,3,3	0.45	0	2,2,2	0.56	0
9	GOL	E	6031	-	5,5,5	0.43	0	5,5,5	0.33	0
7	EDO	E	6038	-	3,3,3	0.61	0	2,2,2	0.13	0
7	EDO	E	6039	-	3,3,3	0.48	0	2,2,2	0.40	0
7	EDO	E	6045	-	3,3,3	0.41	0	2,2,2	0.41	0
7	EDO	E	6046	-	3,3,3	0.31	0	2,2,2	0.62	0
7	EDO	E	6049	-	3,3,3	0.48	0	2,2,2	0.37	0
5	ALA	E	6105	-	2,5,5	0.57	0	0,6,6	0.00	-
9	GOL	E	6205	-	5,5,5	0.32	0	5,5,5	0.43	0
9	GOL	E	6305	-	5,5,5	0.23	0	5,5,5	0.59	0
6	PYR	F	600	2	2,5,5	1.84	1 (50%)	2,6,6	1.24	0
9	GOL	F	6001	-	5,5,5	0.34	0	5,5,5	0.49	0
9	GOL	F	6005	-	5,5,5	0.23	0	5,5,5	0.35	0
9	GOL	F	6010	-	5,5,5	0.32	0	5,5,5	0.53	0
7	EDO	F	6012	-	3,3,3	0.56	0	2,2,2	0.45	0
7	EDO	F	6036	-	3,3,3	0.51	0	2,2,2	0.25	0
9	GOL	F	6057	-	5,5,5	0.35	0	5,5,5	0.19	0
5	ALA	F	6106	-	2,5,5	0.39	0	0,6,6	0.00	-
9	GOL	F	6206	-	5,5,5	0.27	0	5,5,5	0.57	0
9	GOL	F	6306	-	5,5,5	0.26	0	5,5,5	0.64	0
6	PYR	G	600	2	2,5,5	1.88	1 (50%)	2,6,6	1.00	0
9	GOL	G	6004	-	5,5,5	0.31	0	5,5,5	0.37	0
7	EDO	G	6016	-	3,3,3	0.49	0	2,2,2	0.41	0
7	EDO	G	6052	-	3,3,3	0.46	0	2,2,2	0.45	0
5	ALA	G	6107	-	2,5,5	0.45	0	0,6,6	0.00	-
9	GOL	G	6207	-	5,5,5	0.30	0	5,5,5	0.28	0
9	GOL	G	6307	-	5,5,5	0.29	0	5,5,5	0.53	0
6	PYR	H	600	2	2,5,5	2.08	1 (50%)	2,6,6	1.60	1 (50%)
9	GOL	H	6006	-	5,5,5	0.38	0	5,5,5	0.49	0

Mol	Type	Chain	Res	Link	Bond lengths			Bond angles		
					Counts	RMSZ	# Z > 2	Counts	RMSZ	# Z > 2
9	GOL	H	6008	-	5,5,5	0.27	0	5,5,5	0.34	0
7	EDO	H	6034	-	3,3,3	0.57	0	2,2,2	0.13	0
7	EDO	H	6037	-	3,3,3	0.49	0	2,2,2	0.26	0
7	EDO	H	6041	-	3,3,3	0.48	0	2,2,2	0.37	0
7	EDO	H	6042	-	3,3,3	0.46	0	2,2,2	0.44	0
7	EDO	H	6053	-	3,3,3	0.46	0	2,2,2	0.41	0
7	EDO	H	6054	-	3,3,3	0.42	0	2,2,2	0.53	0
5	ALA	H	6108	-	2,5,5	0.46	0	0,6,6	0.00	-
9	GOL	H	6208	-	5,5,5	0.19	0	5,5,5	0.64	0
9	GOL	H	6308	-	5,5,5	0.29	0	5,5,5	0.87	0

In the following table, the Chirals column lists the number of chiral outliers, the number of chiral centers analysed, the number of these observed in the model and the number defined in the chemical component dictionary. Similar counts are reported in the Torsion and Rings columns. '-' means no outliers of that kind were identified.

Mol	Type	Chain	Res	Link	Chirals	Torsions	Rings
6	PYR	A	600	2	-	0/0/4/4	0/0/0/0
9	GOL	A	6002	-	-	0/4/4/4	0/0/0/0
7	EDO	A	6043	-	-	0/1/1/1	0/0/0/0
7	EDO	A	6050	-	-	0/1/1/1	0/0/0/0
7	EDO	A	6051	-	-	0/1/1/1	0/0/0/0
5	ALA	A	6101	-	-	0/0/4/4	0/0/0/0
9	GOL	A	6201	-	-	0/4/4/4	0/0/0/0
9	GOL	A	6301	-	-	0/4/4/4	0/0/0/0
6	PYR	B	600	2	-	0/0/4/4	0/0/0/0
9	GOL	B	6007	-	-	0/4/4/4	0/0/0/0
7	EDO	B	6013	-	-	0/1/1/1	0/0/0/0
8	ETE	B	6018	-	-	0/11/11/11	0/0/0/0
7	EDO	B	6032	-	-	0/1/1/1	0/0/0/0
7	EDO	B	6047	-	-	0/1/1/1	0/0/0/0
7	EDO	B	6048	-	-	0/1/1/1	0/0/0/0
5	ALA	B	6102	-	-	0/0/4/4	0/0/0/0
9	GOL	B	6202	-	-	0/4/4/4	0/0/0/0
9	GOL	B	6302	-	-	0/4/4/4	0/0/0/0
6	PYR	C	600	2	-	0/0/4/4	0/0/0/0
7	EDO	C	6014	-	-	0/1/1/1	0/0/0/0
7	EDO	C	6044	-	-	0/1/1/1	0/0/0/0
9	GOL	C	6055	-	-	0/4/4/4	0/0/0/0
9	GOL	C	6056	-	-	0/4/4/4	0/0/0/0
5	ALA	C	6103	-	-	0/0/4/4	0/0/0/0
9	GOL	C	6203	-	-	0/4/4/4	0/0/0/0
9	GOL	C	6303	-	-	0/4/4/4	0/0/0/0

Continued on next page...

Continued from previous page...

Mol	Type	Chain	Res	Link	Chirals	Torsions	Rings
6	PYR	D	600	2	-	0/0/4/4	0/0/0/0
7	EDO	D	6011	-	-	0/1/1/1	0/0/0/0
7	EDO	D	6017	-	-	0/1/1/1	0/0/0/0
7	EDO	D	6033	-	-	0/1/1/1	0/0/0/0
7	EDO	D	6040	-	-	0/1/1/1	0/0/0/0
5	ALA	D	6104	-	-	0/0/4/4	0/0/0/0
9	GOL	D	6204	-	-	0/4/4/4	0/0/0/0
9	GOL	D	6304	-	-	0/4/4/4	0/0/0/0
6	PYR	E	600	2	-	0/0/4/4	0/0/0/0
7	EDO	E	6015	-	-	0/1/1/1	0/0/0/0
9	GOL	E	6031	-	-	0/4/4/4	0/0/0/0
7	EDO	E	6038	-	-	0/1/1/1	0/0/0/0
7	EDO	E	6039	-	-	0/1/1/1	0/0/0/0
7	EDO	E	6045	-	-	0/1/1/1	0/0/0/0
7	EDO	E	6046	-	-	0/1/1/1	0/0/0/0
7	EDO	E	6049	-	-	0/1/1/1	0/0/0/0
5	ALA	E	6105	-	-	0/0/4/4	0/0/0/0
9	GOL	E	6205	-	-	0/4/4/4	0/0/0/0
9	GOL	E	6305	-	-	0/4/4/4	0/0/0/0
6	PYR	F	600	2	-	0/0/4/4	0/0/0/0
9	GOL	F	6001	-	-	0/4/4/4	0/0/0/0
9	GOL	F	6005	-	-	0/4/4/4	0/0/0/0
9	GOL	F	6010	-	-	0/4/4/4	0/0/0/0
7	EDO	F	6012	-	-	0/1/1/1	0/0/0/0
7	EDO	F	6036	-	-	0/1/1/1	0/0/0/0
9	GOL	F	6057	-	-	0/4/4/4	0/0/0/0
5	ALA	F	6106	-	-	0/0/4/4	0/0/0/0
9	GOL	F	6206	-	-	0/4/4/4	0/0/0/0
9	GOL	F	6306	-	-	0/4/4/4	0/0/0/0
6	PYR	G	600	2	-	0/0/4/4	0/0/0/0
9	GOL	G	6004	-	-	0/4/4/4	0/0/0/0
7	EDO	G	6016	-	-	0/1/1/1	0/0/0/0
7	EDO	G	6052	-	-	0/1/1/1	0/0/0/0
5	ALA	G	6107	-	-	0/0/4/4	0/0/0/0
9	GOL	G	6207	-	-	0/4/4/4	0/0/0/0
9	GOL	G	6307	-	-	0/4/4/4	0/0/0/0
6	PYR	H	600	2	-	0/0/4/4	0/0/0/0
9	GOL	H	6006	-	-	0/4/4/4	0/0/0/0
9	GOL	H	6008	-	-	0/4/4/4	0/0/0/0
7	EDO	H	6034	-	-	0/1/1/1	0/0/0/0
7	EDO	H	6037	-	-	0/1/1/1	0/0/0/0
7	EDO	H	6041	-	-	0/1/1/1	0/0/0/0

Continued on next page...

Continued from previous page...

Mol	Type	Chain	Res	Link	Chirals	Torsions	Rings
7	EDO	H	6042	-	-	0/1/1/1	0/0/0/0
7	EDO	H	6053	-	-	0/1/1/1	0/0/0/0
7	EDO	H	6054	-	-	0/1/1/1	0/0/0/0
5	ALA	H	6108	-	-	0/0/4/4	0/0/0/0
9	GOL	H	6208	-	-	0/4/4/4	0/0/0/0
9	GOL	H	6308	-	-	0/4/4/4	0/0/0/0

All (8) bond length outliers are listed below:

Mol	Chain	Res	Type	Atoms	Z	Observed(Å)	Ideal(Å)
6	B	600	PYR	O3-C2	2.41	1.31	1.22
6	A	600	PYR	O3-C2	2.56	1.31	1.22
6	F	600	PYR	O3-C2	2.58	1.31	1.22
6	G	600	PYR	O3-C2	2.60	1.31	1.22
6	E	600	PYR	O3-C2	2.68	1.32	1.22
6	D	600	PYR	O3-C2	2.78	1.32	1.22
6	C	600	PYR	O3-C2	2.83	1.32	1.22
6	H	600	PYR	O3-C2	2.92	1.32	1.22

All (2) bond angle outliers are listed below:

Mol	Chain	Res	Type	Atoms	Z	Observed(°)	Ideal(°)
6	H	600	PYR	O3-C2-C3	2.26	125.55	120.13
6	D	600	PYR	O3-C2-C3	2.39	125.87	120.13

There are no chirality outliers.

There are no torsion outliers.

There are no ring outliers.

26 monomers are involved in 47 short contacts:

Mol	Chain	Res	Type	Clashes	Symm-Clashes
9	A	6002	GOL	1	0
5	A	6101	ALA	1	0
8	B	6018	ETE	8	0
7	B	6032	EDO	3	0
5	B	6102	ALA	1	0
7	C	6044	EDO	2	0
9	C	6055	GOL	1	0
5	C	6103	ALA	1	0
7	D	6017	EDO	4	0

Continued on next page...

Continued from previous page...

Mol	Chain	Res	Type	Clashes	Symm-Clashes
5	D	6104	ALA	1	0
9	E	6031	GOL	2	0
7	E	6038	EDO	3	0
7	E	6045	EDO	2	0
7	E	6046	EDO	2	0
5	E	6105	ALA	1	0
9	F	6001	GOL	1	0
9	F	6005	GOL	1	0
9	F	6010	GOL	2	0
7	F	6036	EDO	2	0
5	F	6106	ALA	1	0
5	G	6107	ALA	1	0
9	H	6006	GOL	2	0
9	H	6008	GOL	1	0
7	H	6034	EDO	2	0
7	H	6054	EDO	1	0
5	H	6108	ALA	1	0

5.7 Other polymers [i](#)

There are no such residues in this entry.

5.8 Polymer linkage issues [i](#)

There are no chain breaks in this entry.

6 Fit of model and data ⓘ

6.1 Protein, DNA and RNA chains ⓘ

In the following table, the column labelled ‘#RSRZ> 2’ contains the number (and percentage) of RSRZ outliers, followed by percent RSRZ outliers for the chain as percentile scores relative to all X-ray entries and entries of similar resolution. The OWAB column contains the minimum, median, 95th percentile and maximum values of the occupancy-weighted average B-factor per residue. The column labelled ‘Q< 0.9’ lists the number of (and percentage) of residues with an average occupancy less than 0.9.

Mol	Chain	Analysed	<RSRZ>	#RSRZ>2	OWAB(Å ²)	Q<0.9
1	A	519/530 (97%)	-0.47	8 (1%) 76 79	7, 10, 17, 26	1 (0%)
1	B	511/530 (96%)	-0.13	35 (6%) 20 18	7, 11, 41, 63	0
1	C	512/530 (96%)	0.03	23 (4%) 37 35	7, 10, 25, 31	0
1	D	521/530 (98%)	-0.46	8 (1%) 76 79	5, 10, 18, 26	0
1	E	521/530 (98%)	-0.45	6 (1%) 81 83	5, 10, 18, 25	0
1	F	515/530 (97%)	0.04	22 (4%) 39 38	7, 10, 24, 34	0
1	G	510/530 (96%)	-0.08	41 (8%) 15 13	7, 11, 36, 43	0
1	H	519/530 (97%)	-0.45	7 (1%) 79 82	6, 11, 18, 29	0
All	All	4128/4240 (97%)	-0.25	150 (3%) 46 47	5, 10, 25, 63	1 (0%)

All (150) RSRZ outliers are listed below:

Mol	Chain	Res	Type	RSRZ
1	B	201	PHE	9.6
1	F	129	ALA	6.8
1	G	191	PHE	6.7
1	G	155	ILE	6.7
1	F	11	PHE	6.5
1	G	201	PHE	6.4
1	H	11	PHE	6.4
1	D	189	PRO	6.2
1	C	201	PHE	5.9
1	G	11	PHE	5.5
1	G	147	TYR	5.5
1	B	191	PHE	5.5
1	B	155	ILE	5.3
1	C	191	PHE	5.1
1	F	201	PHE	5.1
1	G	151	CYS	5.0

Continued on next page...

Continued from previous page...

Mol	Chain	Res	Type	RSRZ
1	F	147	TYR	4.9
1	G	186	GLN	4.8
1	F	133	LEU	4.8
1	B	122	LEU	4.7
1	G	131	VAL	4.7
1	C	129	ALA	4.5
1	E	10	ALA	4.5
1	C	133	LEU	4.5
1	B	129	ALA	4.4
1	A	191	PHE	4.4
1	B	133	LEU	4.4
1	A	189	PRO	4.3
1	B	11	PHE	4.3
1	B	131	VAL	4.3
1	G	133	LEU	4.3
1	B	202	LEU	4.2
1	D	128	THR	4.1
1	B	192	LEU	4.1
1	F	155	ILE	4.0
1	C	155	ILE	4.0
1	C	122	LEU	3.9
1	A	188	GLY	3.8
1	F	191	PHE	3.8
1	B	151	CYS	3.7
1	G	134	LYS	3.7
1	G	150	LYS	3.7
1	F	151	CYS	3.6
1	H	191	PHE	3.6
1	F	123	ILE	3.6
1	E	128	THR	3.5
1	G	122	LEU	3.5
1	E	189	PRO	3.5
1	C	190	ASP	3.4
1	H	190	ASP	3.4
1	G	192	LEU	3.4
1	G	139	LEU	3.4
1	B	147	TYR	3.4
1	B	166	VAL	3.3
1	A	190	ASP	3.3
1	C	147	TYR	3.3
1	F	12	ILE	3.3
1	B	186	GLN	3.3

Continued on next page...

Continued from previous page...

Mol	Chain	Res	Type	RSRZ
1	C	123	ILE	3.2
1	G	166	VAL	3.2
1	C	186	GLN	3.2
1	G	164	CYS	3.2
1	D	126	SER	3.2
1	A	127	GLY	3.2
1	B	142	THR	3.2
1	G	156	LEU	3.1
1	H	188	GLY	3.1
1	C	202	LEU	3.1
1	B	198	ASN	3.0
1	G	135	LYS	3.0
1	B	139	LEU	3.0
1	D	190	ASP	3.0
1	C	170	GLY	2.9
1	G	138	THR	2.9
1	B	164	CYS	2.8
1	A	12	ILE	2.8
1	G	141	ILE	2.8
1	H	128	THR	2.8
1	G	184	VAL	2.8
1	G	194	THR	2.8
1	B	184	VAL	2.8
1	F	131	VAL	2.7
1	F	128	THR	2.7
1	G	185	LYS	2.7
1	D	188	GLY	2.7
1	B	143	LEU	2.6
1	B	130	GLU	2.6
1	F	186	GLN	2.6
1	C	198	ASN	2.6
1	G	193	VAL	2.6
1	G	140	LYS	2.6
1	B	196	VAL	2.6
1	B	152	ASP	2.5
1	C	12	ILE	2.5
1	G	197	GLU	2.5
1	G	182	LEU	2.5
1	G	167	VAL	2.5
1	B	150	LYS	2.5
1	G	202	LEU	2.5
1	B	138	THR	2.4

Continued on next page...

Continued from previous page...

Mol	Chain	Res	Type	RSRZ
1	C	184	VAL	2.4
1	F	190	ASP	2.4
1	G	198	ASN	2.4
1	C	192	LEU	2.4
1	F	169	VAL	2.4
1	B	194	THR	2.4
1	B	195	GLU	2.3
1	B	170	GLY	2.3
1	G	203	GLY	2.3
1	B	530	PRO	2.3
1	D	10	ALA	2.3
1	D	127	GLY	2.3
1	E	11	PHE	2.3
1	G	196	VAL	2.3
1	B	197	GLU	2.2
1	G	152	ASP	2.2
1	B	132	GLU	2.2
1	F	197	GLU	2.2
1	G	169	VAL	2.2
1	C	214	ALA	2.2
1	G	142	THR	2.2
1	B	185	LYS	2.2
1	F	140	LYS	2.2
1	F	198	ASN	2.2
1	D	212	GLY	2.2
1	C	139	LEU	2.1
1	E	127	GLY	2.1
1	A	167[A]	VAL	2.1
1	B	134	LYS	2.1
1	E	190	ASP	2.1
1	H	127	GLY	2.1
1	F	153	GLU	2.1
1	G	214	ALA	2.1
1	C	194	THR	2.1
1	G	157	TRP	2.1
1	C	183	GLN	2.1
1	G	99	SER	2.1
1	C	154	ASN	2.1
1	C	151	CYS	2.1
1	G	148	MET	2.1
1	G	153	GLU	2.1
1	A	126	SER	2.1

Continued on next page...

Continued from previous page...

Mol	Chain	Res	Type	RSRZ
1	H	126	SER	2.1
1	G	154	ASN	2.0
1	C	146	ALA	2.0
1	F	214	ALA	2.0
1	F	170	GLY	2.0
1	F	156	LEU	2.0
1	B	469[A]	PHE	2.0
1	B	135	LYS	2.0

6.2 Non-standard residues in protein, DNA, RNA chains [i](#)

There are no non-standard protein/DNA/RNA residues in this entry.

6.3 Carbohydrates [i](#)

There are no carbohydrates in this entry.

6.4 Ligands [i](#)

In the following table, the Atoms column lists the number of modelled atoms in the group and the number defined in the chemical component dictionary. LLDF column lists the quality of electron density of the group with respect to its neighbouring residues in protein, DNA or RNA chains. The B-factors column lists the minimum, median, 95th percentile and maximum values of B factors of atoms in the group. The column labelled 'Q< 0.9' lists the number of atoms with occupancy less than 0.9.

Mol	Type	Chain	Res	Atoms	RSCC	RSR	LLDF	B-factors(Å ²)	Q<0.9
7	EDO	D	6017	4/4	0.75	0.23	46.23	26,28,30,31	0
9	GOL	E	6031	6/6	0.90	0.28	21.85	36,37,37,38	0
7	EDO	H	6054	4/4	0.73	0.28	18.46	34,34,36,37	0
7	EDO	E	6045	4/4	0.94	0.26	17.25	33,34,34,34	0
9	GOL	H	6008	6/6	0.79	0.28	16.62	30,37,38,39	0
9	GOL	F	6306	6/6	0.81	0.19	15.86	23,30,30,30	0
6	PYR	G	600	6/6	0.89	0.18	14.92	11,11,15,15	0
9	GOL	H	6308	6/6	0.87	0.17	12.70	18,27,28,30	0
9	GOL	B	6007	6/6	0.74	0.25	11.91	35,40,41,42	0
9	GOL	H	6006	6/6	0.78	0.23	9.85	39,43,44,46	0
7	EDO	G	6016	4/4	0.92	0.17	9.36	29,32,32,34	0
9	GOL	A	6002	6/6	0.78	0.21	8.77	29,36,38,38	0
9	GOL	E	6305	6/6	0.88	0.18	8.48	17,25,26,28	0

Continued on next page...

Continued from previous page...

Mol	Type	Chain	Res	Atoms	RSCC	RSR	LLDF	B-factors(\AA^2)	Q<0.9
9	GOL	A	6301	6/6	0.84	0.20	8.42	18,27,28,31	0
9	GOL	D	6304	6/6	0.88	0.20	8.16	20,27,28,30	0
9	GOL	B	6302	6/6	0.80	0.26	8.00	36,38,38,39	0
8	ETE	B	6018	14/14	0.79	0.26	7.78	35,40,43,44	0
7	EDO	E	6046	4/4	0.93	0.28	7.56	25,29,30,32	0
9	GOL	C	6303	6/6	0.82	0.18	7.28	23,29,29,30	0
6	PYR	B	600	6/6	0.92	0.13	6.88	10,12,14,14	0
9	GOL	F	6005	6/6	0.75	0.19	6.82	23,33,34,35	0
6	PYR	H	600	6/6	0.95	0.11	6.50	5,8,9,9	0
9	GOL	F	6001	6/6	0.77	0.24	6.39	32,35,37,38	0
6	PYR	A	600	6/6	0.95	0.12	6.36	6,7,9,9	0
9	GOL	G	6307	6/6	0.72	0.32	6.11	35,37,38,38	0
9	GOL	C	6055	6/6	0.86	0.19	5.97	21,25,29,31	0
6	PYR	D	600	6/6	0.94	0.10	5.66	8,9,11,12	0
6	PYR	E	600	6/6	0.95	0.10	5.02	6,9,11,12	0
7	EDO	E	6038	4/4	0.85	0.21	4.72	27,28,30,31	0
9	GOL	C	6203	6/6	0.84	0.16	4.71	26,31,31,33	0
9	GOL	C	6056	6/6	0.83	0.19	4.45	42,44,44,44	0
7	EDO	D	6040	4/4	0.68	0.26	4.43	40,41,42,43	0
7	EDO	H	6034	4/4	0.90	0.15	4.42	28,28,29,30	0
9	GOL	A	6201	6/6	0.90	0.12	4.19	17,23,24,25	0
9	GOL	H	6208	6/6	0.86	0.13	4.01	23,28,29,30	0
9	GOL	F	6206	6/6	0.84	0.15	3.94	22,28,29,29	0
9	GOL	G	6207	6/6	0.83	0.17	3.24	39,40,41,41	0
9	GOL	E	6205	6/6	0.93	0.11	3.16	18,23,24,25	0
7	EDO	B	6048	4/4	0.75	0.20	2.99	51,51,51,51	0
9	GOL	D	6204	6/6	0.92	0.11	2.89	19,27,27,27	0
9	GOL	F	6010	6/6	0.69	0.24	2.80	47,48,49,49	0
7	EDO	A	6051	4/4	0.90	0.23	2.51	40,42,42,42	0
9	GOL	F	6057	6/6	0.85	0.20	2.12	67,67,67,67	0
7	EDO	B	6032	4/4	0.92	0.19	2.04	23,23,24,27	0
5	ALA	G	6107	6/6	0.94	0.11	1.80	10,10,10,11	0
9	GOL	B	6202	6/6	0.87	0.14	1.78	35,37,37,38	0
7	EDO	D	6033	4/4	0.78	0.14	1.69	53,53,53,53	0
5	ALA	D	6104	6/6	0.94	0.09	1.64	11,12,12,12	0
7	EDO	E	6039	4/4	0.87	0.13	1.60	49,49,49,50	0
7	EDO	E	6049	4/4	0.89	0.12	1.44	30,34,35,37	0
6	PYR	F	600	6/6	0.95	0.09	1.28	5,6,9,10	0
4	NA	F	6027	1/1	0.99	0.12	1.06	17,17,17,17	0
7	EDO	B	6047	4/4	0.85	0.11	0.90	42,44,44,45	0
4	NA	E	6030	1/1	0.99	0.11	0.83	16,16,16,16	0

Continued on next page...

Continued from previous page...

Mol	Type	Chain	Res	Atoms	RSCC	RSR	LLDF	B-factors(\AA^2)	Q<0.9
7	EDO	F	6036	4/4	0.83	0.14	0.76	33,33,35,36	0
7	EDO	C	6044	4/4	0.81	0.15	0.70	35,37,38,39	0
7	EDO	H	6037	4/4	0.88	0.09	0.63	34,35,35,37	0
5	ALA	H	6108	6/6	0.98	0.08	0.53	10,11,11,11	0
5	ALA	E	6105	6/6	0.97	0.08	0.53	11,12,12,12	0
7	EDO	A	6050	4/4	0.94	0.09	0.47	28,32,32,35	0
5	ALA	A	6101	6/6	0.97	0.07	0.38	9,10,10,11	0
4	NA	H	6029	1/1	0.99	0.07	-0.23	20,20,20,20	0
5	ALA	B	6102	6/6	0.97	0.07	-0.37	11,12,12,12	0
4	NA	D	6026	1/1	0.98	0.08	-0.58	19,19,19,19	0
4	NA	C	6025	1/1	0.99	0.08	-0.61	18,18,18,18	0
4	NA	A	6023	1/1	0.99	0.06	-0.67	14,14,14,14	0
6	PYR	C	600	6/6	0.95	0.07	-0.67	9,9,10,10	0
4	NA	B	6024	1/1	0.99	0.06	-0.72	21,21,21,21	0
7	EDO	H	6042	4/4	0.89	0.09	-0.83	42,42,43,44	0
4	NA	G	6028	1/1	0.99	0.04	-1.07	21,21,21,21	0
3	K	G	6507	1/1	0.97	0.05	-1.29	22,22,22,22	0
4	NA	A	6019	1/1	0.98	0.05	-1.37	21,21,21,21	0
3	K	B	6502	1/1	0.99	0.03	-1.44	18,18,18,18	0
4	NA	E	6021	1/1	0.98	0.05	-1.44	21,21,21,21	0
4	NA	H	6022	1/1	0.98	0.05	-1.48	21,21,21,21	0
5	ALA	F	6106	6/6	0.97	0.06	-1.76	8,10,10,10	0
4	NA	D	6020	1/1	0.97	0.04	-1.79	23,23,23,23	0
5	ALA	C	6103	6/6	0.96	0.07	-1.92	9,11,11,11	0
3	K	E	6505	1/1	1.00	0.02	-4.73	13,13,13,13	0
3	K	H	6508	1/1	0.99	0.03	-4.84	14,14,14,14	0
3	K	C	6503	1/1	1.00	0.03	-4.96	13,13,13,13	0
3	K	D	6504	1/1	0.99	0.02	-5.61	14,14,14,14	0
3	K	A	6501	1/1	0.99	0.02	-7.13	14,14,14,14	0
3	K	F	6506	1/1	1.00	0.02	-7.49	13,13,13,13	0
2	MN	E	640	1/1	1.00	0.02	-	11,11,11,11	0
7	EDO	D	6011	4/4	0.95	0.09	-	28,30,31,32	0
2	MN	F	640	1/1	1.00	0.02	-	10,10,10,10	0
7	EDO	C	6014	4/4	0.91	0.10	-	29,31,31,33	0
2	MN	A	640	1/1	1.00	0.01	-	10,10,10,10	0
7	EDO	A	6043	4/4	0.71	0.21	-	67,68,68,68	0
7	EDO	F	6012	4/4	0.88	0.15	-	27,29,30,30	0
7	EDO	H	6053	4/4	0.84	0.23	-	37,40,41,43	0
2	MN	H	640	1/1	1.00	0.02	-	11,11,11,11	0
9	GOL	G	6004	6/6	0.74	0.38	-	49,51,51,52	0
7	EDO	B	6013	4/4	0.92	0.13	-	32,34,35,36	0
2	MN	G	640	1/1	0.98	0.03	-	18,18,18,18	0

Continued on next page...

Continued from previous page...

Mol	Type	Chain	Res	Atoms	RSCC	RSR	LLDF	B-factors(\AA^2)	Q<0.9
7	EDO	E	6015	4/4	0.90	0.15	-	35,37,38,38	0
2	MN	D	640	1/1	1.00	0.02	-	11,11,11,11	0
7	EDO	H	6041	4/4	0.87	0.10	-	46,46,46,47	0
2	MN	C	640	1/1	1.00	0.02	-	10,10,10,10	0
7	EDO	G	6052	4/4	0.86	0.14	-	36,39,39,40	0
2	MN	B	640	1/1	0.98	0.04	-	14,14,14,14	0

6.5 Other polymers [i](#)

There are no such residues in this entry.