



Full wwPDB X-ray Structure Validation Report ⓘ

Jan 31, 2016 – 07:35 PM GMT

PDB ID : 1G9V
Title : HIGH RESOLUTION CRYSTAL STRUCTURE OF DEOXY
HEMOGLOBIN COMPLEXED WITH A POTENT ALLOSTERIC EF-
FECTOR
Authors : Safo, M.K.; Moure, C.M.; Burnett, J.C.; Joshi, G.S.; Abraham, D.J.
Deposited on : 2000-11-28
Resolution : 1.85 Å(reported)

This is a Full wwPDB X-ray Structure Validation Report for a publicly released PDB entry.
We welcome your comments at validation@mail.wwpdb.org
A user guide is available at
<http://wwpdb.org/validation/2016/XrayValidationReportHelp>
with specific help available everywhere you see the ⓘ symbol.

The following versions of software and data (see [references ⓘ](#)) were used in the production of this report:

MolProbity : 4.02b-467
Mogul : 1.7 (RC4), CSD as536be (2015)
Xtriage (Phenix) : 1.9-1692
EDS : rb-20026688
Percentile statistics : 20151230.v01 (using entries in the PDB archive December 30th 2015)
Refmac : 5.8.0135
CCP4 : 6.5.0
Ideal geometry (proteins) : Engh & Huber (2001)
Ideal geometry (DNA, RNA) : Parkinson et al. (1996)
Validation Pipeline (wwPDB-VP) : trunk26865

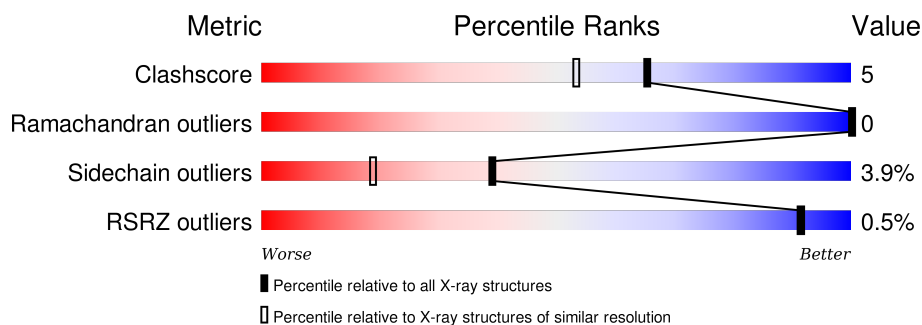
1 Overall quality at a glance

The following experimental techniques were used to determine the structure:

X-RAY DIFFRACTION

The reported resolution of this entry is 1.85 Å.

Percentile scores (ranging between 0-100) for global validation metrics of the entry are shown in the following graphic. The table shows the number of entries on which the scores are based.



Metric	Whole archive (#Entries)	Similar resolution (#Entries, resolution range(Å))
Clashscore	102246	1898 (1.86-1.86)
Ramachandran outliers	100387	1875 (1.86-1.86)
Sidechain outliers	100360	1875 (1.86-1.86)
RSRZ outliers	91569	1747 (1.86-1.86)

The table below summarises the geometric issues observed across the polymeric chains and their fit to the electron density. The red, orange, yellow and green segments on the lower bar indicate the fraction of residues that contain outliers for ≥ 3 , 2, 1 and 0 types of geometric quality criteria. A grey segment represents the fraction of residues that are not modelled. The numeric value for each fraction is indicated below the corresponding segment, with a dot representing fractions $\leq 5\%$. The upper red bar (where present) indicates the fraction of residues that have poor fit to the electron density. The numeric value is given above the bar.

Mol	Chain	Length	Quality of chain
1	A	141	
1	C	141	
2	B	146	
2	D	146	

The following table lists non-polymeric compounds, carbohydrate monomers and non-standard residues in protein, DNA, RNA chains that are outliers for geometric or electron-density-fit criteria:

Mol	Type	Chain	Res	Chirality	Geometry	Clashes	Electron density
3	SO4	B	1200	-	-	-	X
5	RQ3	A	801	-	-	-	X

2 Entry composition [i](#)

There are 6 unique types of molecules in this entry. The entry contains 4876 atoms, of which 0 are hydrogens and 0 are deuteriums.

In the tables below, the ZeroOcc column contains the number of atoms modelled with zero occupancy, the AltConf column contains the number of residues with at least one atom in alternate conformation and the Trace column contains the number of residues modelled with at most 2 atoms.

- Molecule 1 is a protein called HEMOGLOBIN ALPHA CHAIN.

Mol	Chain	Residues	Atoms					ZeroOcc	AltConf	Trace
1	A	141	Total	C	N	O	S	0	0	0
			1069	685	187	194	3			
1	C	141	Total	C	N	O	S	0	0	0
			1069	685	187	194	3			

- Molecule 2 is a protein called HEMOGLOBIN BETA CHAIN.

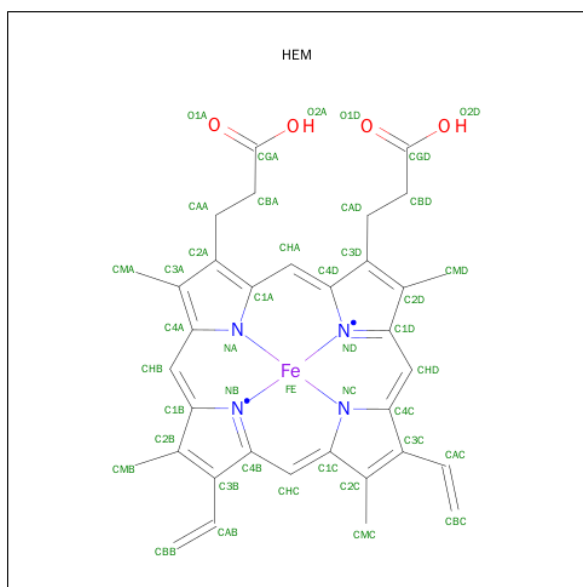
Mol	Chain	Residues	Atoms					ZeroOcc	AltConf	Trace
2	B	146	Total	C	N	O	S	0	0	0
			1123	724	195	201	3			
2	D	146	Total	C	N	O	S	0	0	0
			1123	724	195	201	3			

- Molecule 3 is SULFATE ION (three-letter code: SO4) (formula: O₄S).



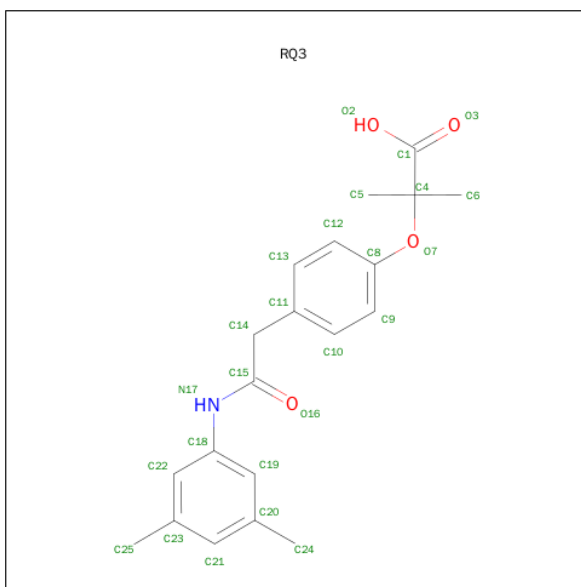
Mol	Chain	Residues	Atoms			ZeroOcc	AltConf
3	B	1	Total 5	O 4	S 1	0	0
3	D	1	Total 5	O 4	S 1	0	0

- Molecule 4 is PROTOPORPHYRIN IX CONTAINING FE (three-letter code: HEM) (formula: $C_{34}H_{32}FeN_4O_4$).



Mol	Chain	Residues	Atoms					ZeroOcc	AltConf
4	A	1	Total 43	C 34	Fe 1	N 4	O 4	0	0
4	B	1	Total 43	C 34	Fe 1	N 4	O 4	0	0
4	C	1	Total 43	C 34	Fe 1	N 4	O 4	0	0
4	D	1	Total 43	C 34	Fe 1	N 4	O 4	0	0

- Molecule 5 is 2-[4-[(3,5-DIMETHYLANILINO)-CARBONYL-METHYL]-PHENOXY}-2-METHYLPROPIONIC ACID (three-letter code: RQ3) (formula: $C_{20}H_{23}NO_4$).



Mol	Chain	Residues	Atoms				ZeroOcc	AltConf
5	A	1	Total 25	C 20	N 1	O 4	0	0
5	C	1	Total 25	C 20	N 1	O 4	0	0

- Molecule 6 is water.

Mol	Chain	Residues	Atoms	ZeroOcc	AltConf
6	A	68	Total O 68 68	0	0
6	B	59	Total O 59 59	0	0
6	C	72	Total O 72 72	0	0
6	D	61	Total O 61 61	0	0

3 Residue-property plots [i](#)


These plots are drawn for all protein, RNA and DNA chains in the entry. The first graphic for a chain summarises the proportions of errors displayed in the second graphic. The second graphic shows the sequence view annotated by issues in geometry and electron density. Residues are color-coded according to the number of geometric quality criteria for which they contain at least one outlier: green = 0, yellow = 1, orange = 2 and red = 3 or more. A red dot above a residue indicates a poor fit to the electron density ($RSRZ > 2$). Stretches of 2 or more consecutive residues without any outlier are shown as a green connector. Residues present in the sample, but not in the model, are shown in grey.

• Molecule 1: HEMOGLOBIN ALPHA CHAIN

Chain A:  91% 8% .




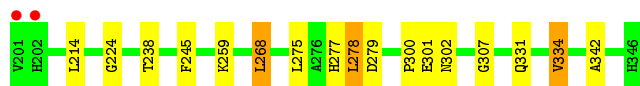
• Molecule 1: HEMOGLOBIN ALPHA CHAIN

Chain C:  89% 11% .




• Molecule 2: HEMOGLOBIN BETA CHAIN

Chain B:  88% 10% .



• Molecule 2: HEMOGLOBIN BETA CHAIN

Chain D:  83% 15% .



4 Data and refinement statistics

Property	Value	Source
Space group	P 1 21 1	Depositor
Cell constants a, b, c, α , β , γ	63.20Å 83.56Å 53.86Å 90.00° 99.16° 90.00°	Depositor
Resolution (Å)	55.00 – 1.85 53.17 – 1.85	Depositor EDS
% Data completeness (in resolution range)	100.0 (55.00-1.85) 93.4 (53.17-1.85)	Depositor EDS
R_{merge}	0.06	Depositor
R_{sym}	(Not available)	Depositor
$\langle I/\sigma(I) \rangle$ ¹	2.42 (at 1.86Å)	Xtriage
Refinement program	X-PLOR 3.843	Depositor
R, R_{free}	0.177 , 0.208 0.167 , (Not available)	Depositor DCC
R_{free} test set	No test flags present.	DCC
Wilson B-factor (Å ²)	23.9	Xtriage
Anisotropy	0.242	Xtriage
Bulk solvent k_{sol} (e/Å ³), B_{sol} (Å ²)	0.34 , 48.1	EDS
Estimated twinning fraction	No twinning to report.	Xtriage
L-test for twinning ²	$\langle L \rangle = 0.49$, $\langle L^2 \rangle = 0.32$	Xtriage
Outliers	0 of 86107 reflections	Xtriage
F_o, F_c correlation	0.97	EDS
Total number of atoms	4876	wwPDB-VP
Average B, all atoms (Å ²)	22.0	wwPDB-VP

Xtriage's analysis on translational NCS is as follows: *The largest off-origin peak in the Patterson function is 6.49% of the height of the origin peak. No significant pseudotranslation is detected.*

¹Intensities estimated from amplitudes.

²Theoretical values of $\langle |L| \rangle$, $\langle L^2 \rangle$ for acentric reflections are 0.5, 0.375 respectively for untwinned datasets, and 0.333, 0.2 for perfectly twinned datasets.

5 Model quality

5.1 Standard geometry

Bond lengths and bond angles in the following residue types are not validated in this section: HEM, RQ3, SO4

The Z score for a bond length (or angle) is the number of standard deviations the observed value is removed from the expected value. A bond length (or angle) with $|Z| > 5$ is considered an outlier worth inspection. RMSZ is the root-mean-square of all Z scores of the bond lengths (or angles).

Mol	Chain	Bond lengths		Bond angles	
		RMSZ	$\# Z > 5$	RMSZ	$\# Z > 5$
1	A	0.48	0/1097	0.62	1/1491 (0.1%)
1	C	0.44	0/1097	0.66	1/1491 (0.1%)
2	B	0.47	0/1153	0.62	0/1566
2	D	0.51	1/1153 (0.1%)	0.65	2/1566 (0.1%)
All	All	0.48	1/4500 (0.0%)	0.64	4/6114 (0.1%)

All (1) bond length outliers are listed below:

Mol	Chain	Res	Type	Atoms	Z	Observed(Å)	Ideal(Å)
2	D	734	VAL	CB-CG2	-5.07	1.42	1.52

All (4) bond angle outliers are listed below:

Mol	Chain	Res	Type	Atoms	Z	Observed(°)	Ideal(°)
2	D	630	ARG	NE-CZ-NH2	-6.66	116.97	120.30
2	D	630	ARG	NE-CZ-NH1	5.81	123.21	120.30
1	C	447	ASP	N-CA-C	-5.37	96.49	111.00
1	A	47	ASP	N-CA-C	-5.26	96.79	111.00

There are no chirality outliers.

There are no planarity outliers.

5.2 Too-close contacts

In the following table, the Non-H and H(model) columns list the number of non-hydrogen atoms and hydrogen atoms in the chain respectively. The H(added) column lists the number of hydrogen atoms added and optimized by MolProbity. The Clashes column lists the number of clashes within the asymmetric unit, whereas Symm-Clashes lists symmetry related clashes.

Mol	Chain	Non-H	H(model)	H(added)	Clashes	Symm-Clashes
1	A	1069	0	1073	7	0
1	C	1069	0	1070	10	0
2	B	1123	0	1115	13	0
2	D	1123	0	1115	20	0
3	B	5	0	0	0	0
3	D	5	0	0	1	0
4	A	43	0	30	1	0
4	B	43	0	30	0	0
4	C	43	0	30	0	0
4	D	43	0	30	0	0
5	A	25	0	22	0	0
5	C	25	0	22	1	0
6	A	68	0	0	2	0
6	B	59	0	0	2	0
6	C	72	0	0	1	0
6	D	61	0	0	2	0
All	All	4876	0	4537	46	0

The all-atom clashscore is defined as the number of clashes found per 1000 atoms (including hydrogen atoms). The all-atom clashscore for this structure is 5.

All (46) close contacts within the same asymmetric unit are listed below, sorted by their clash magnitude.

Atom-1	Atom-2	Interatomic distance (Å)	Clash overlap (Å)
2:D:707:GLY:CA	2:D:734:VAL:HG21	2.13	0.79
1:C:503:HIS:HE1	2:D:731:GLN:OE1	1.74	0.71
2:B:301:GLU:HG3	1:C:496:VAL:HG11	1.74	0.70
1:A:103:HIS:HD2	6:A:912:HOH:O	1.75	0.70
2:D:707:GLY:HA3	2:D:734:VAL:HG21	1.74	0.68
1:C:505:LEU:O	1:C:509:LEU:HD23	1.92	0.68
1:C:513:LEU:HB3	1:C:516:GLU:HG2	1.74	0.68
1:A:103:HIS:HE1	2:B:331:GLN:OE1	1.77	0.67
2:D:707:GLY:HA3	2:D:734:VAL:CG2	2.26	0.66
1:C:427:GLU:OE2	1:C:512:HIS:HE1	1.83	0.61
2:B:279:ASP:HB2	6:B:1140:HOH:O	2.01	0.60
1:C:503:HIS:HD2	6:C:910:HOH:O	1.85	0.59
2:B:301:GLU:HG3	1:C:496:VAL:CG1	2.37	0.54
2:D:601:VAL:N	3:D:1300:SO4:O3	2.45	0.49
2:D:626:GLU:OE2	2:D:630:ARG:HD2	2.13	0.48
1:A:66:LEU:HD11	1:A:105:LEU:HD21	1.96	0.48
2:B:277:HIS:HD2	6:B:1009:HOH:O	1.95	0.47
2:B:307:GLY:HA2	2:B:334:VAL:HG21	1.96	0.47

Continued on next page...

Continued from previous page...

Atom-1	Atom-2	Interatomic distance (Å)	Clash overlap (Å)
2:D:707:GLY:CA	2:D:734:VAL:CG2	2.86	0.46
2:B:238:THR:HG22	2:B:302:ASN:OD1	2.15	0.46
2:D:691:LEU:CD1	2:D:695:LYS:HD2	2.46	0.46
2:B:224:GLY:HA2	2:B:268:LEU:HG	1.98	0.46
2:B:245:PHE:HA	2:B:259:LYS:HD2	1.98	0.46
2:D:618:VAL:HG13	2:D:623:VAL:HG21	1.98	0.45
1:C:456:LYS:HE3	1:C:456:LYS:HB2	1.74	0.45
1:A:58:HIS:HE1	4:A:143:HEM:CHA	2.30	0.45
2:D:707:GLY:HA2	2:D:734:VAL:HG21	1.93	0.44
2:B:275:LEU:HA	2:B:278:LEU:HD13	1.99	0.44
2:B:307:GLY:CA	2:B:334:VAL:HG21	2.47	0.44
2:D:606:GLU:HG3	2:D:607:GLU:N	2.32	0.44
1:A:60:LYS:HB2	1:A:60:LYS:HE3	1.77	0.44
2:D:606:GLU:HG2	6:D:1146:HOH:O	2.18	0.43
1:C:442:TYR:CE1	1:C:493:VAL:HA	2.53	0.43
1:A:4:PRO:HD2	6:A:1122:HOH:O	2.19	0.43
1:A:21:ALA:HB1	1:A:63:ALA:HB1	2.00	0.43
2:D:614:LEU:HD21	2:D:718:PHE:CD1	2.54	0.43
2:D:614:LEU:HD21	2:D:718:PHE:CE1	2.53	0.42
2:D:724:PRO:HB2	2:D:725:PRO:HD3	2.01	0.42
2:D:691:LEU:HD12	2:D:695:LYS:HD2	2.02	0.42
2:D:743:HIS:HB3	6:D:936:HOH:O	2.19	0.41
2:B:300:PRO:HB3	2:B:342:ALA:HB2	2.03	0.41
5:C:802:RQ3:C1	5:C:802:RQ3:H91	2.51	0.41
2:D:614:LEU:HD23	2:D:614:LEU:O	2.21	0.40
2:D:657:ASN:HA	2:D:658:PRO:HD3	1.86	0.40
2:D:700:PRO:HB3	2:D:742:ALA:HB2	2.03	0.40
2:B:301:GLU:CG	1:C:496:VAL:HG11	2.47	0.40

There are no symmetry-related clashes.

5.3 Torsion angles [i](#)

5.3.1 Protein backbone [i](#)

In the following table, the Percentiles column shows the percent Ramachandran outliers of the chain as a percentile score with respect to all X-ray entries followed by that with respect to entries of similar resolution.

The Analysed column shows the number of residues for which the backbone conformation was analysed, and the total number of residues.

Mol	Chain	Analysed	Favoured	Allowed	Outliers	Percentiles	
1	A	139/141 (99%)	138 (99%)	1 (1%)	0	100	100
1	C	139/141 (99%)	136 (98%)	3 (2%)	0	100	100
2	B	144/146 (99%)	143 (99%)	1 (1%)	0	100	100
2	D	144/146 (99%)	142 (99%)	2 (1%)	0	100	100
All	All	566/574 (99%)	559 (99%)	7 (1%)	0	100	100

There are no Ramachandran outliers to report.

5.3.2 Protein sidechains ⓘ

In the following table, the Percentiles column shows the percent sidechain outliers of the chain as a percentile score with respect to all X-ray entries followed by that with respect to entries of similar resolution.

The Analysed column shows the number of residues for which the sidechain conformation was analysed, and the total number of residues.

Mol	Chain	Analysed	Rotameric	Outliers	Percentiles	
1	A	113/113 (100%)	109 (96%)	4 (4%)	43	23
1	C	113/113 (100%)	108 (96%)	5 (4%)	35	15
2	B	118/118 (100%)	114 (97%)	4 (3%)	44	24
2	D	118/118 (100%)	113 (96%)	5 (4%)	36	16
All	All	462/462 (100%)	444 (96%)	18 (4%)	39	19

All (18) residues with a non-rotameric sidechain are listed below:

Mol	Chain	Res	Type
1	A	78	ASN
1	A	101	LEU
1	A	105	LEU
1	A	109	LEU
2	B	214	LEU
2	B	268	LEU
2	B	278	LEU
2	B	334	VAL
1	C	480	LEU
1	C	483	LEU
1	C	490	LYS
1	C	505	LEU
1	C	506	LEU

Continued on next page...

Continued from previous page...

Mol	Chain	Res	Type
2	D	614	LEU
2	D	668	LEU
2	D	675	LEU
2	D	678	LEU
2	D	739	ASN

Some sidechains can be flipped to improve hydrogen bonding and reduce clashes. All (8) such sidechains are listed below:

Mol	Chain	Res	Type
1	A	72	HIS
1	A	103	HIS
1	C	450	HIS
1	C	472	HIS
1	C	503	HIS
1	C	512	HIS
2	D	663	HIS
2	D	717	HIS

5.3.3 RNA [i](#)

There are no RNA molecules in this entry.

5.4 Non-standard residues in protein, DNA, RNA chains [i](#)

There are no non-standard protein/DNA/RNA residues in this entry.

5.5 Carbohydrates [i](#)

There are no carbohydrates in this entry.

5.6 Ligand geometry [i](#)

8 ligands are modelled in this entry.

In the following table, the Counts columns list the number of bonds (or angles) for which Mogul statistics could be retrieved, the number of bonds (or angles) that are observed in the model and the number of bonds (or angles) that are defined in the chemical component dictionary. The Link column lists molecule types, if any, to which the group is linked. The Z score for a bond length (or angle) is the number of standard deviations the observed value is removed from the expected

value. A bond length (or angle) with $|Z| > 2$ is considered an outlier worth inspection. RMSZ is the root-mean-square of all Z scores of the bond lengths (or angles).

Mol	Type	Chain	Res	Link	Bond lengths			Bond angles		
					Counts	RMSZ	# $ Z > 2$	Counts	RMSZ	# $ Z > 2$
4	HEM	A	143	1	30,50,50	2.38	12 (40%)	24,82,82	2.43	12 (50%)
5	RQ3	A	801	-	23,26,26	1.32	2 (8%)	33,37,37	0.92	1 (3%)
3	SO4	B	1200	-	4,4,4	0.55	0	6,6,6	0.16	0
4	HEM	B	348	2	30,50,50	2.71	13 (43%)	24,82,82	2.34	8 (33%)
4	HEM	C	543	1	30,50,50	2.88	11 (36%)	24,82,82	2.44	9 (37%)
5	RQ3	C	802	-	23,26,26	0.88	1 (4%)	33,37,37	0.82	1 (3%)
3	SO4	D	1300	-	4,4,4	0.46	0	6,6,6	0.27	0
4	HEM	D	748	2	30,50,50	2.60	12 (40%)	24,82,82	2.14	7 (29%)

In the following table, the Chirals column lists the number of chiral outliers, the number of chiral centers analysed, the number of these observed in the model and the number defined in the chemical component dictionary. Similar counts are reported in the Torsion and Rings columns. '-' means no outliers of that kind were identified.

Mol	Type	Chain	Res	Link	Chirals	Torsions	Rings
4	HEM	A	143	1	-	0/10/54/54	0/0/8/8
5	RQ3	A	801	-	-	0/13/19/19	0/2/2/2
3	SO4	B	1200	-	-	0/0/0/0	0/0/0/0
4	HEM	B	348	2	-	0/10/54/54	0/0/8/8
4	HEM	C	543	1	-	0/10/54/54	0/0/8/8
5	RQ3	C	802	-	-	0/13/19/19	0/2/2/2
3	SO4	D	1300	-	-	0/0/0/0	0/0/0/0
4	HEM	D	748	2	-	0/10/54/54	0/0/8/8

All (51) bond length outliers are listed below:

Mol	Chain	Res	Type	Atoms	Z	Observed(Å)	Ideal(Å)
4	D	748	HEM	C2D-C3D	-6.79	1.34	1.54
4	C	543	HEM	C3B-C4B	-6.76	1.45	1.51
4	C	543	HEM	C2D-C3D	-6.42	1.35	1.54
4	B	348	HEM	C3B-C4B	-6.18	1.46	1.51
4	A	143	HEM	C2D-C3D	-6.08	1.36	1.54
4	C	543	HEM	C3C-CAC	-5.54	1.40	1.51
4	B	348	HEM	C2D-C3D	-5.53	1.37	1.54
4	C	543	HEM	C3B-CAB	-5.48	1.41	1.51
4	D	748	HEM	C3C-CAC	-5.27	1.41	1.51
4	C	543	HEM	C3D-C4D	-5.14	1.45	1.51
4	A	143	HEM	C3C-CAC	-4.95	1.42	1.51

Continued on next page...

Continued from previous page...

Mol	Chain	Res	Type	Atoms	Z	Observed(Å)	Ideal(Å)
4	B	348	HEM	C3C-CAC	-4.88	1.42	1.51
4	D	748	HEM	C3B-CAB	-4.82	1.42	1.51
5	A	801	RQ3	C14-C11	-4.66	1.43	1.51
4	B	348	HEM	C3B-CAB	-4.48	1.42	1.51
4	A	143	HEM	C3B-CAB	-4.10	1.43	1.51
4	D	748	HEM	C3B-C4B	-4.08	1.48	1.51
4	C	543	HEM	C2C-C1C	-4.07	1.44	1.52
4	D	748	HEM	C2C-C1C	-3.97	1.45	1.52
4	A	143	HEM	C2C-C1C	-3.87	1.45	1.52
4	B	348	HEM	C3D-C4D	-3.81	1.46	1.51
4	D	748	HEM	C3D-C4D	-3.71	1.46	1.51
4	A	143	HEM	C3D-C4D	-3.06	1.47	1.51
4	B	348	HEM	C2C-C1C	-2.94	1.47	1.52
4	A	143	HEM	C3B-C4B	-2.73	1.49	1.51
4	A	143	HEM	CHC-C1C	2.07	1.41	1.36
4	A	143	HEM	FE-NB	2.11	2.08	1.97
4	D	748	HEM	FE-NC	2.30	2.04	1.95
4	D	748	HEM	CBB-CAB	2.31	1.42	1.29
4	A	143	HEM	C1C-NC	2.32	1.38	1.36
4	B	348	HEM	CBC-CAC	2.35	1.42	1.29
4	C	543	HEM	FE-NB	2.37	2.10	1.97
4	B	348	HEM	FE-ND	2.38	2.10	1.97
4	D	748	HEM	FE-NB	2.43	2.10	1.97
4	C	543	HEM	C1C-NC	2.56	1.39	1.36
4	D	748	HEM	CHD-C4C	2.60	1.42	1.36
4	C	543	HEM	CHC-C1C	2.66	1.42	1.36
4	D	748	HEM	CBC-CAC	2.66	1.44	1.29
4	A	143	HEM	CBC-CAC	2.68	1.44	1.29
4	B	348	HEM	FE-NC	2.77	2.06	1.95
5	A	801	RQ3	O7-C8	2.83	1.49	1.40
4	A	143	HEM	CBB-CAB	2.91	1.46	1.29
5	C	802	RQ3	O7-C8	2.91	1.49	1.40
4	B	348	HEM	CBB-CAB	3.08	1.47	1.29
4	B	348	HEM	C4C-NC	3.09	1.39	1.36
4	B	348	HEM	CHD-C4C	3.17	1.43	1.36
4	A	143	HEM	FE-NC	3.34	2.09	1.95
4	C	543	HEM	C4C-NC	3.45	1.40	1.36
4	D	748	HEM	C1C-NC	3.46	1.40	1.36
4	C	543	HEM	CBC-CAC	3.49	1.49	1.29
4	B	348	HEM	C1C-NC	4.71	1.41	1.36

All (38) bond angle outliers are listed below:

Mol	Chain	Res	Type	Atoms	Z	Observed(°)	Ideal(°)
4	A	143	HEM	CMA-C3A-C4A	-2.88	123.59	128.36
4	A	143	HEM	CAA-C2A-C1A	-2.79	123.97	127.01
4	A	143	HEM	CBD-CAD-C3D	-2.13	107.35	113.55
4	B	348	HEM	C3B-CAB-CBB	2.10	127.68	124.46
4	A	143	HEM	C3B-C4B-CHC	2.11	126.14	123.16
4	A	143	HEM	CMD-C2D-C3D	2.41	124.99	114.35
4	A	143	HEM	CMA-C3A-C2A	2.42	130.29	125.24
4	D	748	HEM	C3B-C4B-CHC	2.46	126.63	123.16
4	B	348	HEM	C3C-CAC-CBC	2.66	128.54	124.46
5	C	802	RQ3	C4-O7-C8	2.69	125.69	121.04
4	C	543	HEM	C4B-CHC-C1C	2.70	130.33	125.82
4	D	748	HEM	CMD-C2D-C3D	2.73	126.41	114.35
4	C	543	HEM	C3B-C4B-CHC	2.75	127.04	123.16
4	C	543	HEM	CMD-C2D-C3D	2.91	127.21	114.35
4	C	543	HEM	C3C-CAC-CBC	2.93	128.95	124.46
5	A	801	RQ3	C4-O7-C8	2.93	126.11	121.04
4	B	348	HEM	CMD-C2D-C3D	3.14	128.22	114.35
4	B	348	HEM	C2D-C3D-C4D	3.22	106.95	101.50
4	D	748	HEM	CAD-C3D-C2D	3.24	122.52	113.22
4	D	748	HEM	CMB-C2B-C3B	3.24	124.62	116.53
4	C	543	HEM	C2D-C3D-C4D	3.42	107.30	101.50
4	A	143	HEM	CMC-C2C-C3C	3.52	125.31	116.53
4	A	143	HEM	CAD-C3D-C2D	3.77	124.06	113.22
4	C	543	HEM	CMC-C2C-C3C	3.92	126.31	116.53
4	B	348	HEM	CMC-C2C-C3C	4.02	126.56	116.53
4	C	543	HEM	CAD-C3D-C4D	4.02	126.63	112.47
4	B	348	HEM	CAD-C3D-C4D	4.06	126.80	112.47
4	A	143	HEM	CAD-C3D-C4D	4.14	127.06	112.47
4	A	143	HEM	C3C-CAC-CBC	4.21	130.92	124.46
4	B	348	HEM	CAD-C3D-C2D	4.31	125.62	113.22
4	A	143	HEM	C2D-C3D-C4D	4.35	108.87	101.50
4	D	748	HEM	C2D-C3D-C4D	4.38	108.92	101.50
4	C	543	HEM	CAD-C3D-C2D	4.46	126.03	113.22
4	D	748	HEM	CMC-C2C-C3C	4.50	127.78	116.53
4	A	143	HEM	CMB-C2B-C3B	4.53	127.85	116.53
4	D	748	HEM	CAD-C3D-C4D	4.56	128.55	112.47
4	B	348	HEM	CMB-C2B-C3B	5.41	130.02	116.53
4	C	543	HEM	CMB-C2B-C3B	6.02	131.55	116.53

There are no chirality outliers.

There are no torsion outliers.

There are no ring outliers.

3 monomers are involved in 3 short contacts:

Mol	Chain	Res	Type	Clashes	Symm-Clashes
4	A	143	HEM	1	0
5	C	802	RQ3	1	0
3	D	1300	SO4	1	0

5.7 Other polymers [i](#)

There are no such residues in this entry.

5.8 Polymer linkage issues [i](#)

There are no chain breaks in this entry.

6 Fit of model and data [i](#)

6.1 Protein, DNA and RNA chains [i](#)

In the following table, the column labelled ‘#RSRZ> 2’ contains the number (and percentage) of RSRZ outliers, followed by percent RSRZ outliers for the chain as percentile scores relative to all X-ray entries and entries of similar resolution. The OWAB column contains the minimum, median, 95th percentile and maximum values of the occupancy-weighted average B-factor per residue. The column labelled ‘Q< 0.9’ lists the number of (and percentage) of residues with an average occupancy less than 0.9.

Mol	Chain	Analysed	<RSRZ>	#RSRZ>2	OWAB(Å ²)	Q<0.9
1	A	141/141 (100%)	-0.46	0 100 100	12, 18, 32, 40	0
1	C	141/141 (100%)	-0.50	0 100 100	12, 18, 31, 39	0
2	B	146/146 (100%)	-0.41	2 (1%) 78 78	12, 20, 34, 49	0
2	D	146/146 (100%)	-0.38	1 (0%) 89 88	12, 21, 37, 49	0
All	All	574/574 (100%)	-0.44	3 (0%) 91 91	12, 19, 34, 49	0

All (3) RSRZ outliers are listed below:

Mol	Chain	Res	Type	RSRZ
2	B	202	HIS	4.1
2	B	201	VAL	3.6
2	D	602	HIS	2.7

6.2 Non-standard residues in protein, DNA, RNA chains [i](#)

There are no non-standard protein/DNA/RNA residues in this entry.

6.3 Carbohydrates [i](#)

There are no carbohydrates in this entry.

6.4 Ligands [i](#)

In the following table, the Atoms column lists the number of modelled atoms in the group and the number defined in the chemical component dictionary. LLDF column lists the quality of electron density of the group with respect to its neighbouring residues in protein, DNA or RNA chains. The B-factors column lists the minimum, median, 95th percentile and maximum values of B factors of atoms in the group. The column labelled ‘Q< 0.9’ lists the number of atoms with occupancy less than 0.9.

Mol	Type	Chain	Res	Atoms	RSCC	RSR	LLDF	B-factors(\AA^2)	Q<0.9
3	SO4	B	1200	5/5	0.87	0.29	2.89	61,62,63,67	0
5	RQ3	A	801	25/25	0.93	0.10	2.17	19,24,35,39	0
5	RQ3	C	802	25/25	0.94	0.10	1.94	26,28,33,35	0
3	SO4	D	1300	5/5	0.92	0.17	1.30	57,57,59,60	0
4	HEM	D	748	43/43	0.97	0.09	1.06	14,18,40,45	0
4	HEM	C	543	43/43	0.98	0.08	0.35	12,15,29,30	0
4	HEM	B	348	43/43	0.98	0.08	0.15	13,16,26,35	0
4	HEM	A	143	43/43	0.98	0.08	0.13	11,17,28,35	0

6.5 Other polymers

There are no such residues in this entry.