



wwPDB X-ray Structure Validation Summary Report ⓘ

Feb 1, 2016 – 04:50 PM GMT

PDB ID : 4GA6
Title : Crystal structure of AMP phosphorylase C-terminal deletion mutant in complex with substrates
Authors : Nishitani, Y.; Aono, R.; Nakamura, A.; Sato, T.; Atomi, H.; Imanaka, T.; Miki, K.
Deposited on : 2012-07-25
Resolution : 2.21 Å(reported)

This is a wwPDB X-ray Structure Validation Summary Report for a publicly released PDB entry.
We welcome your comments at validation@mail.wwpdb.org
A user guide is available at
<http://wwpdb.org/validation/2016/XrayValidationReportHelp>
with specific help available everywhere you see the ⓘ symbol.

The following versions of software and data (see [references ⓘ](#)) were used in the production of this report:

MolProbity : 4.02b-467
Mogul : 1.7 (RC4), CSD as536be (2015)
Xtriage (Phenix) : 1.9-1692
EDS : rb-20026688
Percentile statistics : 20151230.v01 (using entries in the PDB archive December 30th 2015)
Refmac : 5.8.0135
CCP4 : 6.5.0
Ideal geometry (proteins) : Engh & Huber (2001)
Ideal geometry (DNA, RNA) : Parkinson et al. (1996)
Validation Pipeline (wwPDB-VP) : trunk26865

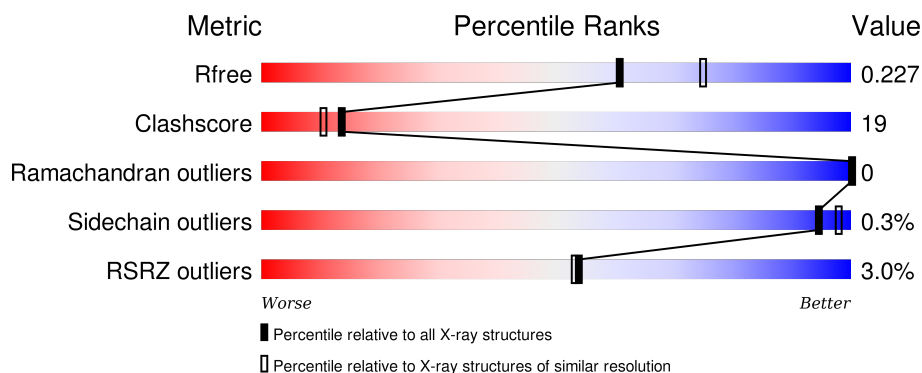
1 Overall quality at a glance

The following experimental techniques were used to determine the structure:

X-RAY DIFFRACTION

The reported resolution of this entry is 2.21 Å.

Percentile scores (ranging between 0-100) for global validation metrics of the entry are shown in the following graphic. The table shows the number of entries on which the scores are based.



Metric	Whole archive (#Entries)	Similar resolution (#Entries, resolution range(Å))
R_{free}	91344	4405 (2.24-2.20)
Clashscore	102246	5146 (2.24-2.20)
Ramachandran outliers	100387	5065 (2.24-2.20)
Sidechain outliers	100360	5066 (2.24-2.20)
RSRZ outliers	91569	4414 (2.24-2.20)

The table below summarises the geometric issues observed across the polymeric chains and their fit to the electron density. The red, orange, yellow and green segments on the lower bar indicate the fraction of residues that contain outliers for ≥ 3 , 2, 1 and 0 types of geometric quality criteria. A grey segment represents the fraction of residues that are not modelled. The numeric value for each fraction is indicated below the corresponding segment, with a dot representing fractions $\leq 5\%$. The upper red bar (where present) indicates the fraction of residues that have poor fit to the electron density. The numeric value is given above the bar.

Mol	Chain	Length	Quality of chain
1	A	513	<div> <div>5%</div> <div>74%</div> <div>22%</div> <div>.</div> </div>
1	B	513	<div> <div>%</div> <div>72%</div> <div>24%</div> <div>.</div> </div>

2 Entry composition

There are 4 unique types of molecules in this entry. The entry contains 7446 atoms, of which 0 are hydrogens and 0 are deuteriums.

In the tables below, the ZeroOcc column contains the number of atoms modelled with zero occupancy, the AltConf column contains the number of residues with at least one atom in alternate conformation and the Trace column contains the number of residues modelled with at most 2 atoms.

- Molecule 1 is a protein called Putative thymidine phosphorylase.

Mol	Chain	Residues	Atoms					ZeroOcc	AltConf	Trace
1	A	493	Total	C	N	O	S	0	0	0
			3479	2201	588	675	15			
1	B	493	Total	C	N	O	S	0	0	0
			3528	2236	601	676	15			

There are 40 discrepancies between the modelled and reference sequences:

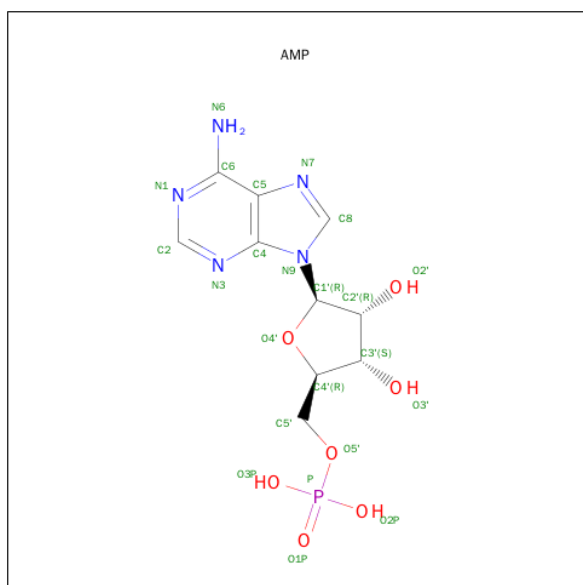
Chain	Residue	Modelled	Actual	Comment	Reference
A	494	GLY	-	EXPRESSION TAG	UNP Q5JCX3
A	495	ASN	-	EXPRESSION TAG	UNP Q5JCX3
A	496	SER	-	EXPRESSION TAG	UNP Q5JCX3
A	497	SER	-	EXPRESSION TAG	UNP Q5JCX3
A	498	SER	-	EXPRESSION TAG	UNP Q5JCX3
A	499	VAL	-	EXPRESSION TAG	UNP Q5JCX3
A	500	ASP	-	EXPRESSION TAG	UNP Q5JCX3
A	501	LYS	-	EXPRESSION TAG	UNP Q5JCX3
A	502	LEU	-	EXPRESSION TAG	UNP Q5JCX3
A	503	ALA	-	EXPRESSION TAG	UNP Q5JCX3
A	504	ALA	-	EXPRESSION TAG	UNP Q5JCX3
A	505	ALA	-	EXPRESSION TAG	UNP Q5JCX3
A	506	LEU	-	EXPRESSION TAG	UNP Q5JCX3
A	507	GLU	-	EXPRESSION TAG	UNP Q5JCX3
A	508	HIS	-	EXPRESSION TAG	UNP Q5JCX3
A	509	HIS	-	EXPRESSION TAG	UNP Q5JCX3
A	510	HIS	-	EXPRESSION TAG	UNP Q5JCX3
A	511	HIS	-	EXPRESSION TAG	UNP Q5JCX3
A	512	HIS	-	EXPRESSION TAG	UNP Q5JCX3
A	513	HIS	-	EXPRESSION TAG	UNP Q5JCX3
B	494	GLY	-	EXPRESSION TAG	UNP Q5JCX3
B	495	ASN	-	EXPRESSION TAG	UNP Q5JCX3
B	496	SER	-	EXPRESSION TAG	UNP Q5JCX3
B	497	SER	-	EXPRESSION TAG	UNP Q5JCX3
B	498	SER	-	EXPRESSION TAG	UNP Q5JCX3

Continued on next page...

Continued from previous page...

Chain	Residue	Modelled	Actual	Comment	Reference
B	499	VAL	-	EXPRESSION TAG	UNP Q5JCX3
B	500	ASP	-	EXPRESSION TAG	UNP Q5JCX3
B	501	LYS	-	EXPRESSION TAG	UNP Q5JCX3
B	502	LEU	-	EXPRESSION TAG	UNP Q5JCX3
B	503	ALA	-	EXPRESSION TAG	UNP Q5JCX3
B	504	ALA	-	EXPRESSION TAG	UNP Q5JCX3
B	505	ALA	-	EXPRESSION TAG	UNP Q5JCX3
B	506	LEU	-	EXPRESSION TAG	UNP Q5JCX3
B	507	GLU	-	EXPRESSION TAG	UNP Q5JCX3
B	508	HIS	-	EXPRESSION TAG	UNP Q5JCX3
B	509	HIS	-	EXPRESSION TAG	UNP Q5JCX3
B	510	HIS	-	EXPRESSION TAG	UNP Q5JCX3
B	511	HIS	-	EXPRESSION TAG	UNP Q5JCX3
B	512	HIS	-	EXPRESSION TAG	UNP Q5JCX3
B	513	HIS	-	EXPRESSION TAG	UNP Q5JCX3

- Molecule 2 is ADENOSINE MONOPHOSPHATE (three-letter code: AMP) (formula: $C_{10}H_{14}N_5O_7P$).



Mol	Chain	Residues	Atoms					ZeroOcc	AltConf
2	A	1	Total	C	N	O	P	0	0
			23	10	5	7	1		
2	B	1	Total	C	N	O	P	0	0
			23	10	5	7	1		

- Molecule 3 is SULFATE ION (three-letter code: SO4) (formula: O_4S).



Mol	Chain	Residues	Atoms			ZeroOcc	AltConf
3	A	1	Total	O	S	0	0
			5	4	1		
3	A	1	Total	O	S	0	0
			5	4	1		
3	B	1	Total	O	S	0	0
			5	4	1		
3	B	1	Total	O	S	0	0
			5	4	1		

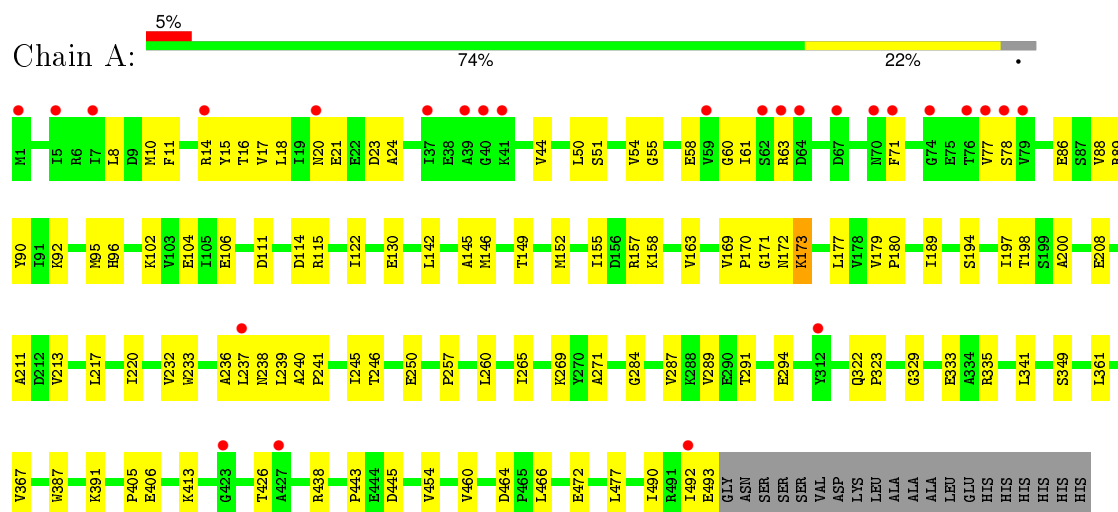
- Molecule 4 is water.

Mol	Chain	Residues	Atoms		ZeroOcc	AltConf
4	A	173	Total	O	0	0
			173	173		
4	B	200	Total	O	0	0
			200	200		

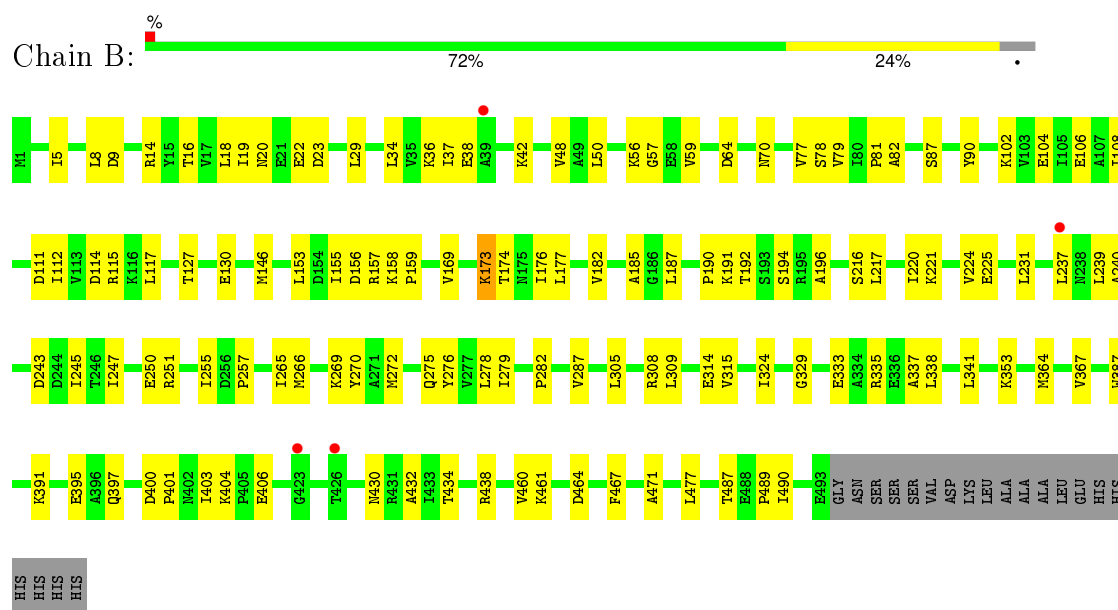
3 Residue-property plots [i](#)

These plots are drawn for all protein, RNA and DNA chains in the entry. The first graphic for a chain summarises the proportions of errors displayed in the second graphic. The second graphic shows the sequence view annotated by issues in geometry and electron density. Residues are color-coded according to the number of geometric quality criteria for which they contain at least one outlier: green = 0, yellow = 1, orange = 2 and red = 3 or more. A red dot above a residue indicates a poor fit to the electron density (RSRZ > 2). Stretches of 2 or more consecutive residues without any outlier are shown as a green connector. Residues present in the sample, but not in the model, are shown in grey.

• Molecule 1: Putative thymidine phosphorylase



• Molecule 1: Putative thymidine phosphorylase



4 Data and refinement statistics

Property	Value	Source
Space group	P 1 21 1	Depositor
Cell constants a, b, c, α , β , γ	51.18Å 87.92Å 105.55Å 90.00° 98.77° 90.00°	Depositor
Resolution (Å)	50.00 – 2.21 43.01 – 2.21	Depositor EDS
% Data completeness (in resolution range)	(Not available) (50.00-2.21) 98.8 (43.01-2.21)	Depositor EDS
R_{merge}	(Not available)	Depositor
R_{sym}	(Not available)	Depositor
$\langle I/\sigma(I) \rangle$ ¹	1.63 (at 2.20Å)	Xtriage
Refinement program	CNS 1.2	Depositor
R, R_{free}	0.214 , 0.226 0.214 , 0.227	Depositor DCC
R_{free} test set	2310 reflections (5.03%)	DCC
Wilson B-factor (Å ²)	29.4	Xtriage
Anisotropy	0.435	Xtriage
Bulk solvent k_{sol} (e/Å ³), B_{sol} (Å ²)	0.34 , 55.4	EDS
Estimated twinning fraction	No twinning to report.	Xtriage
L-test for twinning ²	$\langle L \rangle = 0.49$, $\langle L^2 \rangle = 0.32$	Xtriage
Outliers	0 of 45996 reflections	Xtriage
F_o, F_c correlation	0.94	EDS
Total number of atoms	7446	wwPDB-VP
Average B, all atoms (Å ²)	31.0	wwPDB-VP

Xtriage's analysis on translational NCS is as follows: *The largest off-origin peak in the Patterson function is 10.31% of the height of the origin peak. No significant pseudotranslation is detected.*

¹Intensities estimated from amplitudes.

²Theoretical values of $\langle |L| \rangle$, $\langle L^2 \rangle$ for acentric reflections are 0.5, 0.375 respectively for untwinned datasets, and 0.333, 0.2 for perfectly twinned datasets.

5 Model quality

5.1 Standard geometry

Bond lengths and bond angles in the following residue types are not validated in this section: AMP, SO4

The Z score for a bond length (or angle) is the number of standard deviations the observed value is removed from the expected value. A bond length (or angle) with $|Z| > 5$ is considered an outlier worth inspection. RMSZ is the root-mean-square of all Z scores of the bond lengths (or angles).

Mol	Chain	Bond lengths		Bond angles	
		RMSZ	$\# Z > 5$	RMSZ	$\# Z > 5$
1	A	0.54	0/3526	0.57	0/4801
1	B	0.54	0/3575	0.58	0/4855
All	All	0.54	0/7101	0.58	0/9656

There are no bond length outliers.

There are no bond angle outliers.

There are no chirality outliers.

There are no planarity outliers.

5.2 Too-close contacts

In the following table, the Non-H and H(model) columns list the number of non-hydrogen atoms and hydrogen atoms in the chain respectively. The H(added) column lists the number of hydrogen atoms added and optimized by MolProbity. The Clashes column lists the number of clashes within the asymmetric unit, whereas Symm-Clashes lists symmetry related clashes.

Mol	Chain	Non-H	H(model)	H(added)	Clashes	Symm-Clashes
1	A	3479	0	3419	135	0
1	B	3528	0	3547	134	0
2	A	23	0	12	2	0
2	B	23	0	12	1	0
3	A	10	0	0	1	0
3	B	10	0	0	0	0
4	A	173	0	0	5	0
4	B	200	0	0	4	0
All	All	7446	0	6990	261	0

The all-atom clashscore is defined as the number of clashes found per 1000 atoms (including hydrogen atoms). The all-atom clashscore for this structure is 19.

The worst 5 of 261 close contacts within the same asymmetric unit are listed below, sorted by their clash magnitude.

Atom-1	Atom-2	Interatomic distance (Å)	Clash overlap (Å)
1:A:8:LEU:CD1	1:A:18:LEU:HD12	1.50	1.42
1:B:237:LEU:CD1	1:B:239:LEU:HG	1.63	1.28
1:A:291:THR:OG1	1:A:294:GLU:HG3	1.43	1.18
1:B:432:ALA:HB1	1:B:487:THR:CG2	1.83	1.09
1:A:237:LEU:HD11	1:A:239:LEU:HD12	1.36	1.07

There are no symmetry-related clashes.

5.3 Torsion angles [i](#)

5.3.1 Protein backbone [i](#)

In the following table, the Percentiles column shows the percent Ramachandran outliers of the chain as a percentile score with respect to all X-ray entries followed by that with respect to entries of similar resolution.

The Analysed column shows the number of residues for which the backbone conformation was analysed, and the total number of residues.

Mol	Chain	Analysed	Favoured	Allowed	Outliers	Percentiles	
1	A	491/513 (96%)	484 (99%)	7 (1%)	0	100	100
1	B	491/513 (96%)	486 (99%)	5 (1%)	0	100	100
All	All	982/1026 (96%)	970 (99%)	12 (1%)	0	100	100

There are no Ramachandran outliers to report.

5.3.2 Protein sidechains [i](#)

In the following table, the Percentiles column shows the percent sidechain outliers of the chain as a percentile score with respect to all X-ray entries followed by that with respect to entries of similar resolution.

The Analysed column shows the number of residues for which the sidechain conformation was analysed, and the total number of residues.

Mol	Chain	Analysed	Rotameric	Outliers	Percentiles	
1	A	335/404 (83%)	334 (100%)	1 (0%)	94	98

Continued on next page...

Continued from previous page...

Mol	Chain	Analysed	Rotameric	Outliers	Percentiles	
1	B	348/404 (86%)	347 (100%)	1 (0%)	94	98
All	All	683/808 (84%)	681 (100%)	2 (0%)	94	98

All (2) residues with a non-rotameric sidechain are listed below:

Mol	Chain	Res	Type
1	A	173	LYS
1	B	173	LYS

Some sidechains can be flipped to improve hydrogen bonding and reduce clashes. All (4) such sidechains are listed below:

Mol	Chain	Res	Type
1	A	20	ASN
1	A	96	HIS
1	B	20	ASN
1	B	397	GLN

5.3.3 RNA [i](#)

There are no RNA molecules in this entry.

5.4 Non-standard residues in protein, DNA, RNA chains [i](#)

There are no non-standard protein/DNA/RNA residues in this entry.

5.5 Carbohydrates [i](#)

There are no carbohydrates in this entry.

5.6 Ligand geometry [i](#)

6 ligands are modelled in this entry.

In the following table, the Counts columns list the number of bonds (or angles) for which Mogul statistics could be retrieved, the number of bonds (or angles) that are observed in the model and the number of bonds (or angles) that are defined in the chemical component dictionary. The Link column lists molecule types, if any, to which the group is linked. The Z score for a bond length (or angle) is the number of standard deviations the observed value is removed from the expected

value. A bond length (or angle) with $|Z| > 2$ is considered an outlier worth inspection. RMSZ is the root-mean-square of all Z scores of the bond lengths (or angles).

Mol	Type	Chain	Res	Link	Bond lengths			Bond angles		
					Counts	RMSZ	$\# Z > 2$	Counts	RMSZ	$\# Z > 2$
2	AMP	A	601	-	20,25,25	1.11	1 (5%)	22,38,38	1.80	4 (18%)
3	SO4	A	602	-	4,4,4	0.35	0	6,6,6	0.08	0
3	SO4	A	603	-	4,4,4	0.20	0	6,6,6	0.27	0
2	AMP	B	601	-	20,25,25	1.11	1 (5%)	22,38,38	2.01	4 (18%)
3	SO4	B	602	-	4,4,4	0.34	0	6,6,6	0.08	0
3	SO4	B	603	-	4,4,4	0.40	0	6,6,6	0.53	0

In the following table, the Chirals column lists the number of chiral outliers, the number of chiral centers analysed, the number of these observed in the model and the number defined in the chemical component dictionary. Similar counts are reported in the Torsion and Rings columns. '-' means no outliers of that kind were identified.

Mol	Type	Chain	Res	Link	Chirals	Torsions	Rings
2	AMP	A	601	-	-	0/6/26/26	0/3/3/3
3	SO4	A	602	-	-	0/0/0/0	0/0/0/0
3	SO4	A	603	-	-	0/0/0/0	0/0/0/0
2	AMP	B	601	-	-	0/6/26/26	0/3/3/3
3	SO4	B	602	-	-	0/0/0/0	0/0/0/0
3	SO4	B	603	-	-	0/0/0/0	0/0/0/0

All (2) bond length outliers are listed below:

Mol	Chain	Res	Type	Atoms	Z	Observed(Å)	Ideal(Å)
2	B	601	AMP	C5-C4	2.83	1.46	1.40
2	A	601	AMP	C5-C4	2.88	1.47	1.40

The worst 5 of 8 bond angle outliers are listed below:

Mol	Chain	Res	Type	Atoms	Z	Observed(°)	Ideal(°)
2	B	601	AMP	N3-C2-N1	-6.78	123.71	128.89
2	A	601	AMP	N3-C2-N1	-5.71	124.52	128.89
2	B	601	AMP	C4-C5-N7	-3.14	106.59	109.48
2	A	601	AMP	C2'-C1'-N9	-2.85	109.93	114.29
2	A	601	AMP	C4-C5-N7	-2.68	107.01	109.48

There are no chirality outliers.

There are no torsion outliers.

There are no ring outliers.

3 monomers are involved in 4 short contacts:

Mol	Chain	Res	Type	Clashes	Symm-Clashes
2	A	601	AMP	2	0
3	A	603	SO4	1	0
2	B	601	AMP	1	0

5.7 Other polymers [i](#)

There are no such residues in this entry.

5.8 Polymer linkage issues [i](#)

There are no chain breaks in this entry.

6 Fit of model and data [i](#)

6.1 Protein, DNA and RNA chains [i](#)

In the following table, the column labelled ‘#RSRZ> 2’ contains the number (and percentage) of RSRZ outliers, followed by percent RSRZ outliers for the chain as percentile scores relative to all X-ray entries and entries of similar resolution. The OWAB column contains the minimum, median, 95th percentile and maximum values of the occupancy-weighted average B-factor per residue. The column labelled ‘Q< 0.9’ lists the number of (and percentage) of residues with an average occupancy less than 0.9.

Mol	Chain	Analysed	<RSRZ>	#RSRZ>2	OWAB(Å ²)	Q<0.9
1	A	493/513 (96%)	0.14	26 (5%) 30 29	15, 29, 51, 68	0
1	B	493/513 (96%)	-0.07	4 (0%) 87 87	15, 29, 47, 62	0
All	All	986/1026 (96%)	0.04	30 (3%) 54 53	15, 29, 50, 68	0

The worst 5 of 30 RSRZ outliers are listed below:

Mol	Chain	Res	Type	RSRZ
1	A	40	GLY	5.1
1	A	39	ALA	4.4
1	A	71	PHE	3.9
1	A	77	VAL	3.9
1	A	1	MET	3.8

6.2 Non-standard residues in protein, DNA, RNA chains [i](#)

There are no non-standard protein/DNA/RNA residues in this entry.

6.3 Carbohydrates [i](#)

There are no carbohydrates in this entry.

6.4 Ligands [i](#)

In the following table, the Atoms column lists the number of modelled atoms in the group and the number defined in the chemical component dictionary. LLDF column lists the quality of electron density of the group with respect to its neighbouring residues in protein, DNA or RNA chains. The B-factors column lists the minimum, median, 95th percentile and maximum values of B factors of atoms in the group. The column labelled ‘Q< 0.9’ lists the number of atoms with occupancy less than 0.9.

Mol	Type	Chain	Res	Atoms	RSCC	RSR	LLDF	B-factors(\AA^2)	Q<0.9
3	SO4	A	603	5/5	0.98	0.14	0.09	51,52,53,54	0
3	SO4	B	603	5/5	0.98	0.13	-0.05	42,43,46,47	0
3	SO4	B	602	5/5	0.99	0.13	-0.24	17,20,21,24	0
2	AMP	A	601	23/23	0.94	0.14	-0.25	20,25,28,29	0
2	AMP	B	601	23/23	0.96	0.13	-0.45	17,24,30,30	0
3	SO4	A	602	5/5	0.99	0.14	-0.45	11,18,19,20	0

6.5 Other polymers [i](#)

There are no such residues in this entry.