



Full wwPDB X-ray Structure Validation Report ⓘ

Feb 1, 2016 – 02:15 AM GMT

PDB ID : 2GBC
Title : Native DPP-IV (CD26) from Rat
Authors : Longenecker, K.L.; Jakob, C.G.; Fry, E.H.; Wilk, S.
Deposited on : 2006-03-10
Resolution : 2.80 Å(reported)

This is a Full wwPDB X-ray Structure Validation Report for a publicly released PDB entry.
We welcome your comments at validation@mail.wwpdb.org
A user guide is available at
<http://wwpdb.org/validation/2016/XrayValidationReportHelp>
with specific help available everywhere you see the ⓘ symbol.

The following versions of software and data (see [references ⓘ](#)) were used in the production of this report:

MolProbity : 4.02b-467
Mogul : 1.7 (RC4), CSD as536be (2015)
Xtriage (Phenix) : 1.9-1692
EDS : rb-20026688
Percentile statistics : 20151230.v01 (using entries in the PDB archive December 30th 2015)
Refmac : 5.8.0135
CCP4 : 6.5.0
Ideal geometry (proteins) : Engh & Huber (2001)
Ideal geometry (DNA, RNA) : Parkinson et al. (1996)
Validation Pipeline (wwPDB-VP) : trunk26865

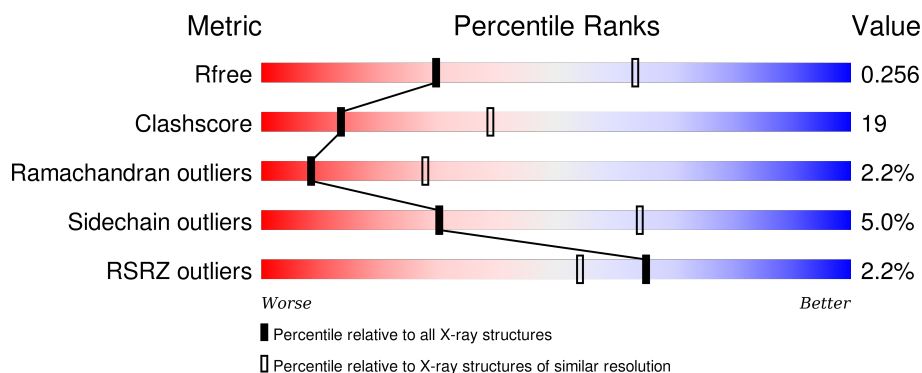
1 Overall quality at a glance ⓘ

The following experimental techniques were used to determine the structure:

X-RAY DIFFRACTION

The reported resolution of this entry is 2.80 Å.

Percentile scores (ranging between 0-100) for global validation metrics of the entry are shown in the following graphic. The table shows the number of entries on which the scores are based.



Metric	Whole archive (#Entries)	Similar resolution (#Entries, resolution range(Å))
R_{free}	91344	2393 (2.80-2.80)
Clashscore	102246	2827 (2.80-2.80)
Ramachandran outliers	100387	2782 (2.80-2.80)
Sidechain outliers	100360	2784 (2.80-2.80)
RSRZ outliers	91569	2404 (2.80-2.80)

The table below summarises the geometric issues observed across the polymeric chains and their fit to the electron density. The red, orange, yellow and green segments on the lower bar indicate the fraction of residues that contain outliers for ≥ 3 , 2, 1 and 0 types of geometric quality criteria. A grey segment represents the fraction of residues that are not modelled. The numeric value for each fraction is indicated below the corresponding segment, with a dot representing fractions $\leq 5\%$. The upper red bar (where present) indicates the fraction of residues that have poor fit to the electron density. The numeric value is given above the bar.

Mol	Chain	Length	Quality of chain
1	A	730	<div> <div>2%</div> <div>66%</div> <div>29%</div> <div>.</div> </div>
1	B	730	<div> <div>3%</div> <div>67%</div> <div>28%</div> <div>.</div> </div>

The following table lists non-polymeric compounds, carbohydrate monomers and non-standard residues in protein, DNA, RNA chains that are outliers for geometric or electron-density-fit criteria:

Mol	Type	Chain	Res	Chirality	Geometry	Clashes	Electron density
2	NAG	A	1083	-	-	-	X
2	NAG	A	1319	-	-	-	X
2	NAG	A	1521	-	-	-	X
2	NAG	B	1319	-	-	-	X
2	NAG	B	1521	-	-	-	X
3	NDG	A	1227	-	-	-	X
3	NDG	B	1083	-	-	-	X
3	NDG	B	1227	-	-	-	X

2 Entry composition [i](#)

There are 4 unique types of molecules in this entry. The entry contains 12041 atoms, of which 0 are hydrogens and 0 are deuteriums.

In the tables below, the ZeroOcc column contains the number of atoms modelled with zero occupancy, the AltConf column contains the number of residues with at least one atom in alternate conformation and the Trace column contains the number of residues modelled with at most 2 atoms.

- Molecule 1 is a protein called Dipeptidyl peptidase 4.

Mol	Chain	Residues	Atoms					ZeroOcc	AltConf	Trace
1	A	730	Total	C	N	O	S	0	0	0
			5940	3804	983	1127	26			
1	B	730	Total	C	N	O	S	0	0	0
			5940	3804	983	1127	26			

- Molecule 2 is SUGAR (N-ACETYL-D-GLUCOSAMINE) (three-letter code: NAG) (formula: $C_8H_{15}NO_6$).



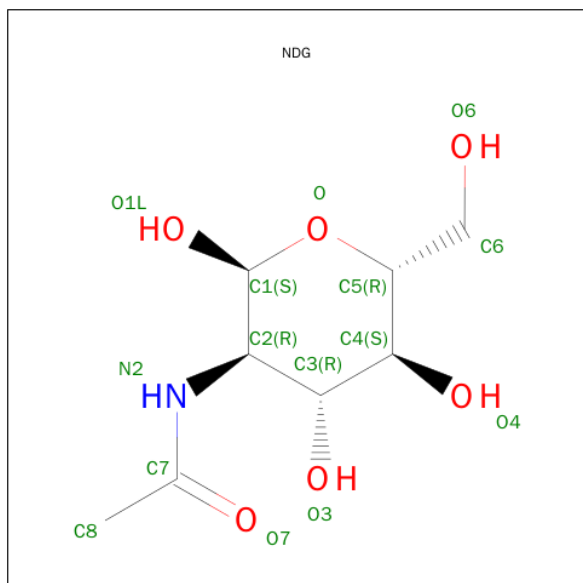
Mol	Chain	Residues	Atoms				ZeroOcc	AltConf
2	A	1	Total	C	N	O	0	0
			14	8	1	5		
2	A	1	Total	C	N	O	0	0
			14	8	1	5		
2	A	1	Total	C	N	O	0	0
			14	8	1	5		
2	B	1	Total	C	N	O	0	0
			14	8	1	5		

Continued on next page...

Continued from previous page...

Mol	Chain	Residues	Atoms				ZeroOcc	AltConf
2	B	1	Total	C	N	O	0	0
			14	8	1	5		
2	B	1	Total	C	N	O	0	0
			14	8	1	5		

- Molecule 3 is SUGAR (2-(ACETYLAMINO)-2-DEOXY-A-D-GLUCOPYRANOSE) (three-letter code: NDG) (formula: C₈H₁₅NO₆).



Mol	Chain	Residues	Atoms				ZeroOcc	AltConf
3	A	1	Total	C	N	O	0	0
			14	8	1	5		
3	A	1	Total	C	N	O	0	0
			14	8	1	5		
3	B	1	Total	C	N	O	0	0
			14	8	1	5		
3	B	1	Total	C	N	O	0	0
			14	8	1	5		

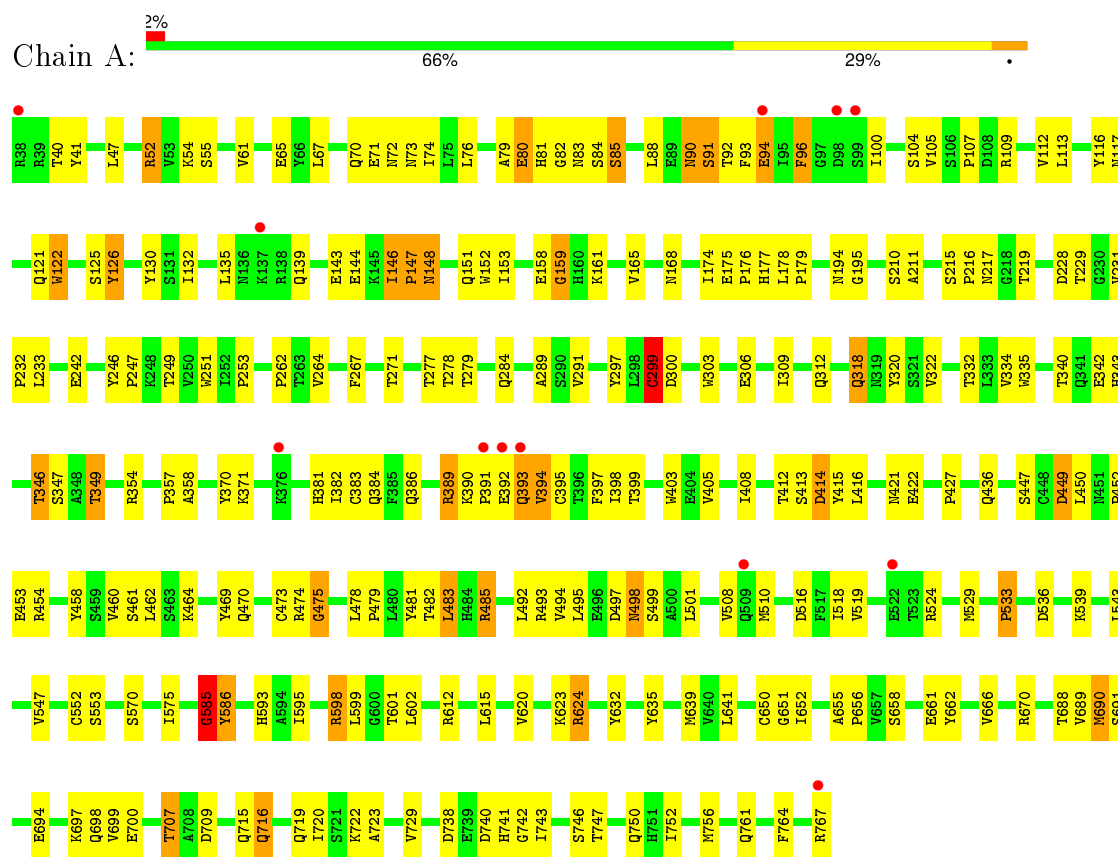
- Molecule 4 is water.

Mol	Chain	Residues	Atoms		ZeroOcc	AltConf
4	A	10	Total	O	0	0
			10	10		
4	B	11	Total	O	0	0
			11	11		

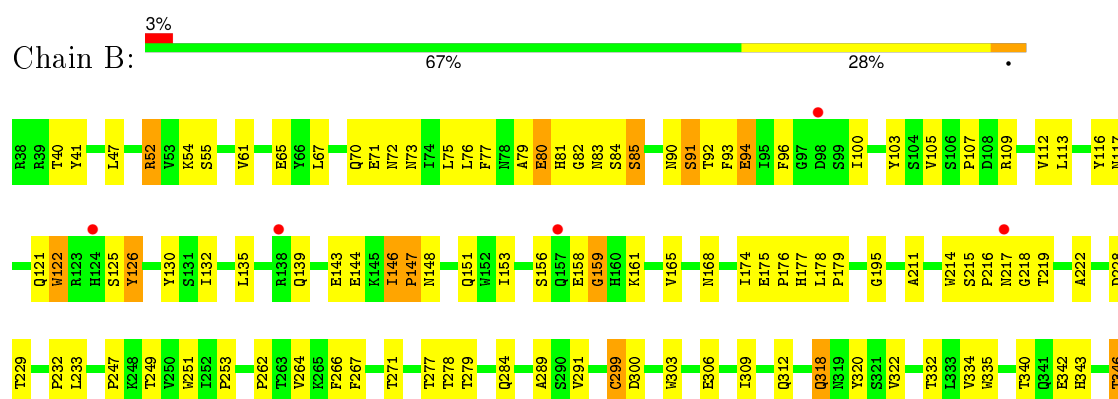
3 Residue-property plots

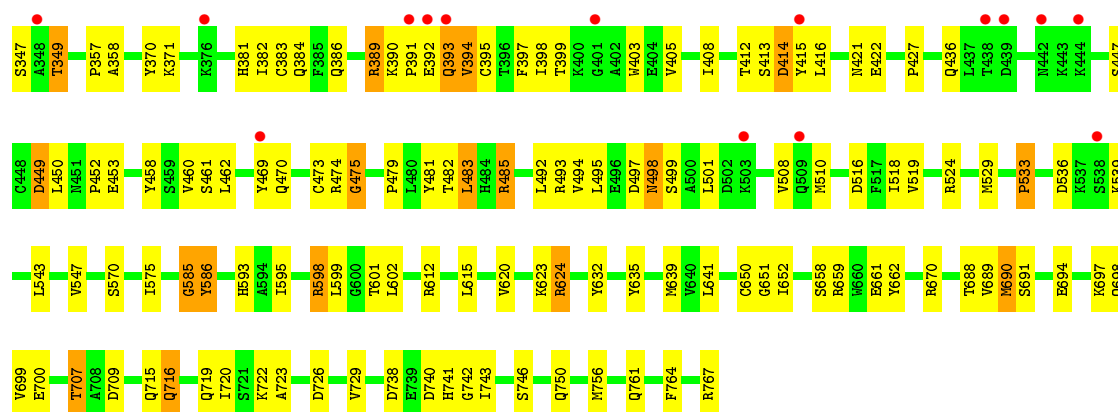
These plots are drawn for all protein, RNA and DNA chains in the entry. The first graphic for a chain summarises the proportions of errors displayed in the second graphic. The second graphic shows the sequence view annotated by issues in geometry and electron density. Residues are color-coded according to the number of geometric quality criteria for which they contain at least one outlier: green = 0, yellow = 1, orange = 2 and red = 3 or more. A red dot above a residue indicates a poor fit to the electron density ($RSRZ > 2$). Stretches of 2 or more consecutive residues without any outlier are shown as a green connector. Residues present in the sample, but not in the model, are shown in grey.

• Molecule 1: Dipeptidyl peptidase 4



• Molecule 1: Dipeptidyl peptidase 4





4 Data and refinement statistics

Property	Value	Source
Space group	P 21 3	Depositor
Cell constants a, b, c, α , β , γ	208.15Å 208.15Å 208.15Å 90.00° 90.00° 90.00°	Depositor
Resolution (Å)	20.00 – 2.80 19.94 – 2.80	Depositor EDS
% Data completeness (in resolution range)	98.7 (20.00-2.80) 98.7 (19.94-2.80)	Depositor EDS
R_{merge}	0.09	Depositor
R_{sym}	(Not available)	Depositor
$\langle I/\sigma(I) \rangle$ ¹	2.51 (at 2.79Å)	Xtriage
Refinement program	CNS	Depositor
R, R_{free}	0.229 , 0.258 0.228 , 0.256	Depositor DCC
R_{free} test set	3673 reflections (5.05%)	DCC
Wilson B-factor (Å ²)	65.1	Xtriage
Anisotropy	0.000	Xtriage
Bulk solvent k_{sol} (e/Å ³), B_{sol} (Å ²)	0.34 , 42.7	EDS
Estimated twinning fraction	0.019 for l,-k,h	Xtriage
L-test for twinning ²	$\langle L \rangle = 0.50$, $\langle L^2 \rangle = 0.33$	Xtriage
Outliers	0 of 72708 reflections	Xtriage
F_o, F_c correlation	0.93	EDS
Total number of atoms	12041	wwPDB-VP
Average B, all atoms (Å ²)	62.0	wwPDB-VP

Xtriage's analysis on translational NCS is as follows: *The largest off-origin peak in the Patterson function is 1.70% of the height of the origin peak. No significant pseudotranslation is detected.*

¹Intensities estimated from amplitudes.

²Theoretical values of $\langle |L| \rangle$, $\langle L^2 \rangle$ for acentric reflections are 0.5, 0.375 respectively for untwinned datasets, and 0.333, 0.2 for perfectly twinned datasets.

5 Model quality [i](#)

5.1 Standard geometry [i](#)

Bond lengths and bond angles in the following residue types are not validated in this section: NAG, NDG

The Z score for a bond length (or angle) is the number of standard deviations the observed value is removed from the expected value. A bond length (or angle) with $|Z| > 5$ is considered an outlier worth inspection. RMSZ is the root-mean-square of all Z scores of the bond lengths (or angles).

Mol	Chain	Bond lengths		Bond angles	
		RMSZ	$\# Z > 5$	RMSZ	$\# Z > 5$
1	A	0.45	2/6109 (0.0%)	0.71	4/8305 (0.0%)
1	B	0.42	0/6109	0.71	4/8305 (0.0%)
All	All	0.44	2/12218 (0.0%)	0.71	8/16610 (0.0%)

All (2) bond length outliers are listed below:

Mol	Chain	Res	Type	Atoms	Z	Observed(Å)	Ideal(Å)
1	A	96	PHE	CE1-CZ	5.08	1.47	1.37
1	A	299	CYS	CB-SG	-5.02	1.73	1.81

All (8) bond angle outliers are listed below:

Mol	Chain	Res	Type	Atoms	Z	Observed(°)	Ideal(°)
1	B	389	ARG	NE-CZ-NH2	-14.79	112.90	120.30
1	B	389	ARG	NE-CZ-NH1	14.20	127.40	120.30
1	A	389	ARG	NE-CZ-NH1	-13.90	113.35	120.30
1	A	389	ARG	NE-CZ-NH2	12.44	126.52	120.30
1	B	389	ARG	CD-NE-CZ	7.24	133.73	123.60
1	A	585	GLY	N-CA-C	6.71	129.88	113.10
1	B	585	GLY	N-CA-C	6.62	129.65	113.10
1	A	389	ARG	CD-NE-CZ	6.38	132.53	123.60

There are no chirality outliers.

There are no planarity outliers.

5.2 Too-close contacts [i](#)

In the following table, the Non-H and H(model) columns list the number of non-hydrogen atoms and hydrogen atoms in the chain respectively. The H(added) column lists the number of hydrogen

atoms added and optimized by MolProbity. The Clashes column lists the number of clashes within the asymmetric unit, whereas Symm-Clashes lists symmetry related clashes.

Mol	Chain	Non-H	H(model)	H(added)	Clashes	Symm-Clashes
1	A	5940	0	5666	221	0
1	B	5940	0	5666	211	0
2	A	42	0	39	3	0
2	B	42	0	39	2	0
3	A	28	0	26	5	0
3	B	28	0	26	5	0
4	A	10	0	0	0	0
4	B	11	0	0	0	0
All	All	12041	0	11462	438	0

The all-atom clashscore is defined as the number of clashes found per 1000 atoms (including hydrogen atoms). The all-atom clashscore for this structure is 19.

All (438) close contacts within the same asymmetric unit are listed below, sorted by their clash magnitude.

Atom-1	Atom-2	Interatomic distance (Å)	Clash overlap (Å)
1:B:151:GLN:HE22	1:B:168:ASN:H	1.07	0.93
1:A:151:GLN:HE22	1:A:168:ASN:H	1.07	0.93
1:A:412:THR:HG22	1:A:414:ASP:H	1.38	0.89
1:A:658:SER:H	1:A:716:GLN:NE2	1.71	0.88
1:B:688:THR:HG22	1:B:691:SER:H	1.37	0.87
1:A:688:THR:HG22	1:A:691:SER:H	1.38	0.86
1:B:151:GLN:NE2	1:B:168:ASN:H	1.74	0.85
1:B:658:SER:H	1:B:716:GLN:NE2	1.74	0.83
1:A:639:MET:CE	1:A:689:VAL:HA	2.09	0.83
1:B:412:THR:HG22	1:B:414:ASP:H	1.42	0.83
1:A:151:GLN:NE2	1:A:168:ASN:H	1.75	0.83
1:A:349:THR:HB	1:A:593:HIS:CD2	2.14	0.83
1:B:217:ASN:HB2	1:B:306:GLU:OE1	1.78	0.82
1:B:349:THR:HB	1:B:593:HIS:CD2	2.14	0.82
1:A:217:ASN:HB2	1:A:306:GLU:OE1	1.78	0.82
1:A:598:ARG:HE	1:A:601:THR:HG21	1.44	0.82
1:B:598:ARG:HE	1:B:601:THR:HG21	1.45	0.81
1:B:639:MET:CE	1:B:689:VAL:HA	2.10	0.81
1:B:73:ASN:HD21	1:B:90:ASN:ND2	1.78	0.81
1:A:624:ARG:HB2	1:A:624:ARG:HH11	1.48	0.78
1:B:449:ASP:O	1:B:452:PRO:HD3	1.83	0.78
1:B:624:ARG:HB2	1:B:624:ARG:HH11	1.49	0.78
1:B:79:ALA:O	1:B:80:GLU:HB2	1.82	0.78

Continued on next page...

Continued from previous page...

Atom-1	Atom-2	Interatomic distance (Å)	Clash overlap (Å)
1:A:54:LYS:H	1:A:498:ASN:HD21	1.33	0.77
1:B:688:THR:CG2	1:B:690:MET:HG2	2.15	0.77
1:B:54:LYS:H	1:B:498:ASN:HD21	1.33	0.76
1:A:52:ARG:HH11	1:A:52:ARG:HB2	1.50	0.76
1:A:449:ASP:O	1:A:452:PRO:HD3	1.85	0.76
1:A:79:ALA:O	1:A:80:GLU:HB2	1.84	0.76
1:A:73:ASN:HD21	1:A:90:ASN:ND2	1.83	0.76
1:B:174:ILE:HD12	1:B:174:ILE:H	1.51	0.76
1:B:52:ARG:HB2	1:B:52:ARG:HH11	1.50	0.75
1:A:121:GLN:O	1:A:125:SER:HB2	1.85	0.75
1:A:52:ARG:HB2	1:A:52:ARG:NH1	2.02	0.75
1:A:688:THR:CG2	1:A:690:MET:HG2	2.16	0.74
1:B:121:GLN:O	1:B:125:SER:HB2	1.87	0.74
1:B:96:PHE:CD1	1:B:100:ILE:HD11	2.24	0.73
1:A:174:ILE:H	1:A:174:ILE:HD12	1.51	0.73
1:B:690:MET:CE	1:B:720:ILE:HA	2.18	0.73
1:B:601:THR:HG22	1:B:602:LEU:N	2.03	0.72
1:B:52:ARG:NH1	1:B:52:ARG:HB2	2.03	0.72
1:A:601:THR:HG22	1:A:602:LEU:N	2.03	0.72
1:A:482:THR:HG22	1:A:494:VAL:HA	1.72	0.72
1:A:690:MET:CE	1:A:720:ILE:HA	2.19	0.71
1:A:91:SER:HA	1:A:94:GLU:OE1	1.91	0.70
1:B:54:LYS:N	1:B:498:ASN:HD21	1.89	0.70
1:B:482:THR:HG22	1:B:494:VAL:HA	1.72	0.70
1:A:381:HIS:CD2	1:A:399:THR:HG22	2.26	0.70
1:A:349:THR:HB	1:A:593:HIS:HD2	1.55	0.70
1:B:151:GLN:HE22	1:B:168:ASN:N	1.87	0.69
1:A:54:LYS:N	1:A:498:ASN:HD21	1.89	0.69
1:A:658:SER:H	1:A:716:GLN:HE21	1.41	0.69
1:B:349:THR:HB	1:B:593:HIS:HD2	1.55	0.69
1:B:91:SER:O	1:B:93:PHE:N	2.25	0.69
1:B:662:TYR:OH	1:B:719:GLN:HG2	1.92	0.69
1:A:54:LYS:H	1:A:498:ASN:ND2	1.91	0.69
3:B:1083:NDG:O7	3:B:1083:NDG:H3	1.92	0.68
1:A:91:SER:O	1:A:93:PHE:N	2.26	0.68
1:B:386:GLN:HG3	1:B:390:LYS:NZ	2.09	0.68
1:B:91:SER:HA	1:B:94:GLU:OE1	1.94	0.68
1:A:662:TYR:OH	1:A:719:GLN:HG2	1.94	0.68
1:A:105:VAL:HG22	1:A:112:VAL:HG22	1.76	0.67
1:B:688:THR:HG23	1:B:690:MET:HG2	1.75	0.67
1:A:175:GLU:HB3	1:A:178:LEU:HG	1.76	0.67

Continued on next page...

Continued from previous page...

Atom-1	Atom-2	Interatomic distance (Å)	Clash overlap (Å)
1:A:688:THR:HG23	1:A:690:MET:HG2	1.77	0.67
1:B:54:LYS:H	1:B:498:ASN:ND2	1.92	0.67
1:B:175:GLU:HB3	1:B:178:LEU:HG	1.77	0.67
1:A:151:GLN:HE22	1:A:168:ASN:N	1.87	0.66
1:B:125:SER:O	1:B:126:TYR:HB3	1.95	0.66
1:B:105:VAL:HG22	1:B:112:VAL:HG22	1.76	0.66
1:A:586:TYR:CD1	1:A:586:TYR:N	2.63	0.66
1:B:595:ILE:CG2	1:B:599:LEU:HD23	2.26	0.66
1:A:460:VAL:HG22	1:A:461:SER:N	2.10	0.66
1:A:125:SER:O	1:A:126:TYR:HB3	1.96	0.66
1:A:382:ILE:HG13	1:A:405:VAL:HG21	1.78	0.66
1:B:460:VAL:HG22	1:B:461:SER:N	2.11	0.66
1:A:96:PHE:CD1	1:A:100:ILE:HD11	2.30	0.66
1:A:386:GLN:HG3	1:A:390:LYS:NZ	2.10	0.65
1:A:595:ILE:CG2	1:A:599:LEU:HD23	2.26	0.65
1:A:370:TYR:CE2	1:A:384:GLN:HG3	2.31	0.65
1:B:392:GLU:C	1:B:393:GLN:HG3	2.17	0.65
1:B:277:THR:HG21	1:B:279:THR:O	1.97	0.65
1:A:624:ARG:HB2	1:A:624:ARG:NH1	2.11	0.65
1:B:146:ILE:HD12	1:B:153:ILE:HD12	1.79	0.64
1:B:586:TYR:N	1:B:586:TYR:CD1	2.64	0.64
1:B:658:SER:H	1:B:716:GLN:HE21	1.45	0.64
1:A:277:THR:HG21	1:A:279:THR:O	1.97	0.64
1:A:392:GLU:C	1:A:393:GLN:HG3	2.16	0.64
1:B:624:ARG:NH1	1:B:624:ARG:HB2	2.12	0.64
1:A:146:ILE:HD12	1:A:153:ILE:HD12	1.80	0.64
1:A:639:MET:HE3	1:A:689:VAL:HA	1.80	0.63
1:A:719:GLN:NE2	1:A:722:LYS:HE2	2.13	0.63
1:A:52:ARG:HH11	1:A:52:ARG:CB	2.12	0.62
1:B:381:HIS:CD2	1:B:399:THR:HG22	2.33	0.62
1:B:719:GLN:NE2	1:B:722:LYS:HE2	2.14	0.62
1:A:694:GLU:O	1:A:697:LYS:HG3	2.00	0.62
1:B:52:ARG:CB	1:B:52:ARG:HH11	2.12	0.62
1:B:370:TYR:CE2	1:B:384:GLN:HG3	2.34	0.62
1:B:81:HIS:O	1:B:83:ASN:N	2.32	0.62
1:B:612:ARG:HH11	1:B:612:ARG:HG3	1.65	0.62
1:B:79:ALA:O	1:B:80:GLU:CB	2.48	0.62
1:B:389:ARG:HG3	1:B:394:VAL:HG13	1.82	0.61
1:B:382:ILE:HG13	1:B:405:VAL:HG21	1.82	0.61
1:A:174:ILE:HD12	1:A:174:ILE:N	2.15	0.61
1:A:612:ARG:HG3	1:A:612:ARG:HH11	1.65	0.61

Continued on next page...

Continued from previous page...

Atom-1	Atom-2	Interatomic distance (Å)	Clash overlap (Å)
1:B:694:GLU:O	1:B:697:LYS:HG3	2.01	0.61
1:A:79:ALA:O	1:A:80:GLU:CB	2.48	0.61
1:B:498:ASN:HB3	1:B:501:LEU:HB3	1.83	0.60
1:B:383:CYS:HB3	1:B:397:PHE:CD2	2.37	0.60
1:B:174:ILE:HD12	1:B:174:ILE:N	2.17	0.60
1:A:81:HIS:O	1:A:83:ASN:N	2.34	0.60
1:B:65:GLU:HB3	1:B:76:LEU:HD11	1.84	0.60
1:B:412:THR:CG2	1:B:413:SER:N	2.64	0.60
1:A:529:MET:HE2	1:A:575:ILE:HG21	1.83	0.60
1:B:299:CYS:SG	1:B:357:PRO:HD2	2.42	0.60
1:B:81:HIS:C	1:B:83:ASN:H	2.05	0.60
1:A:641:LEU:HD22	1:A:699:VAL:HG11	1.83	0.60
1:A:485:ARG:HG3	1:A:485:ARG:O	2.00	0.60
1:B:55:SER:HA	1:B:481:TYR:CE1	2.37	0.60
1:B:146:ILE:HG13	1:B:147:PRO:HD2	1.83	0.59
1:A:146:ILE:HG13	1:A:147:PRO:HD2	1.82	0.59
1:A:65:GLU:HB3	1:A:76:LEU:HD11	1.83	0.59
1:B:412:THR:HG22	1:B:413:SER:N	2.16	0.59
1:B:229:THR:HG21	3:B:1227:NDG:H6C2	1.85	0.59
1:B:485:ARG:HG3	1:B:485:ARG:O	2.01	0.59
1:A:412:THR:CG2	1:A:413:SER:N	2.66	0.59
1:B:697:LYS:HG2	1:B:729:VAL:HG22	1.85	0.58
1:A:55:SER:HA	1:A:481:TYR:CE1	2.39	0.58
1:B:639:MET:HE3	1:B:689:VAL:HA	1.85	0.58
1:A:498:ASN:HB3	1:A:501:LEU:HB3	1.85	0.58
1:A:383:CYS:HB3	1:A:397:PHE:CD2	2.39	0.58
1:A:158:GLU:OE1	1:A:217:ASN:HA	2.04	0.58
1:A:381:HIS:CD2	1:A:399:THR:CG2	2.86	0.57
1:A:697:LYS:HG2	1:A:729:VAL:HG22	1.86	0.57
1:B:483:LEU:HB3	1:B:495:LEU:HD11	1.85	0.57
1:A:158:GLU:HG3	1:A:159:GLY:H	1.70	0.57
1:A:299:CYS:SG	1:A:357:PRO:HD2	2.45	0.57
1:A:107:PRO:HG2	1:A:158:GLU:O	2.05	0.56
1:B:158:GLU:OE1	1:B:217:ASN:HA	2.05	0.56
1:A:408:ILE:HG23	1:A:416:LEU:HD11	1.87	0.56
1:B:408:ILE:HG23	1:B:416:LEU:HD11	1.87	0.56
1:B:233:LEU:HD13	1:B:251:TRP:HE3	1.70	0.56
1:B:146:ILE:CD1	1:B:153:ILE:HD12	2.36	0.56
1:B:175:GLU:HB3	1:B:178:LEU:CG	2.36	0.56
1:B:460:VAL:HG22	1:B:461:SER:H	1.70	0.56
1:B:277:THR:HG22	1:B:279:THR:H	1.70	0.56

Continued on next page...

Continued from previous page...

Atom-1	Atom-2	Interatomic distance (Å)	Clash overlap (Å)
1:A:41:TYR:HB2	1:A:510:MET:HE1	1.87	0.56
1:B:497:ASP:O	1:B:499:SER:N	2.38	0.56
1:A:601:THR:HG22	1:A:602:LEU:H	1.68	0.56
1:A:81:HIS:C	1:A:83:ASN:H	2.07	0.56
1:A:598:ARG:HD3	1:A:598:ARG:O	2.06	0.56
1:A:715:GLN:NE2	1:B:247:PRO:HD3	2.21	0.56
1:B:195:GLY:C	1:B:211:ALA:HB3	2.26	0.55
1:A:688:THR:HG22	1:A:691:SER:N	2.17	0.55
1:A:460:VAL:HG22	1:A:461:SER:H	1.70	0.55
1:A:497:ASP:O	1:A:499:SER:N	2.37	0.55
1:B:158:GLU:HG3	1:B:159:GLY:H	1.72	0.55
1:A:41:TYR:HB2	1:A:510:MET:CE	2.36	0.55
1:B:543:LEU:HD12	1:B:575:ILE:O	2.07	0.55
1:A:412:THR:HG22	1:A:413:SER:N	2.19	0.55
1:A:707:THR:CG2	1:A:738:ASP:H	2.19	0.55
1:B:47:LEU:HD22	1:B:750:GLN:HA	1.87	0.55
1:B:41:TYR:HB2	1:B:510:MET:HE1	1.88	0.55
1:A:175:GLU:HB3	1:A:178:LEU:CG	2.36	0.55
1:A:543:LEU:HD12	1:A:575:ILE:O	2.07	0.55
1:A:598:ARG:NE	1:A:601:THR:HG21	2.19	0.55
1:A:332:THR:O	1:A:334:VAL:HG23	2.07	0.55
1:B:389:ARG:HG3	1:B:394:VAL:CG1	2.36	0.55
1:B:641:LEU:HD22	1:B:699:VAL:HG11	1.88	0.55
1:B:529:MET:HE3	1:B:575:ILE:HG21	1.88	0.55
3:B:1083:NDG:C3	3:B:1083:NDG:O7	2.54	0.54
1:A:641:LEU:HD11	1:A:651:GLY:HA3	1.88	0.54
1:A:358:ALA:O	1:A:371:LYS:HE3	2.07	0.54
1:A:146:ILE:CD1	1:A:153:ILE:HD12	2.37	0.54
1:B:41:TYR:HB2	1:B:510:MET:CE	2.36	0.54
1:A:447:SER:HB2	1:A:458:TYR:CE1	2.42	0.54
3:B:1227:NDG:O7	3:B:1227:NDG:C3	2.56	0.54
1:B:109:ARG:O	1:B:135:LEU:HD12	2.08	0.54
1:B:175:GLU:HG3	1:B:177:HIS:H	1.72	0.54
1:A:195:GLY:C	1:A:211:ALA:HB3	2.28	0.54
1:B:267:PHE:CE2	1:B:284:GLN:HB2	2.43	0.54
1:A:229:THR:HG21	3:A:1227:NDG:H6C1	1.88	0.54
1:B:346:THR:HG23	1:B:347:SER:N	2.23	0.54
1:B:707:THR:CG2	1:B:738:ASP:H	2.21	0.54
1:B:598:ARG:HD3	1:B:598:ARG:O	2.08	0.54
1:B:529:MET:CE	1:B:575:ILE:HG21	2.38	0.54
1:A:47:LEU:HD22	1:A:750:GLN:HA	1.90	0.53

Continued on next page...

Continued from previous page...

Atom-1	Atom-2	Interatomic distance (Å)	Clash overlap (Å)
1:B:601:THR:HG22	1:B:602:LEU:H	1.69	0.53
1:A:277:THR:HG22	1:A:279:THR:H	1.73	0.53
1:B:107:PRO:HG2	1:B:158:GLU:O	2.08	0.53
1:B:175:GLU:HB3	1:B:178:LEU:CD1	2.39	0.53
1:A:761:GLN:HB3	1:A:767:ARG:HB2	1.91	0.53
1:B:447:SER:HB2	1:B:458:TYR:CE1	2.44	0.53
1:B:508:VAL:HG12	1:B:510:MET:HE2	1.90	0.53
1:A:483:LEU:HB3	1:A:495:LEU:HD11	1.89	0.53
1:A:228:ASP:OD1	1:A:262:PRO:HB3	2.08	0.53
1:A:690:MET:HB3	1:A:723:ALA:HB2	1.90	0.53
1:A:383:CYS:HB3	1:A:397:PHE:HA	1.90	0.53
1:B:474:ARG:O	1:B:475:GLY:O	2.26	0.53
1:A:233:LEU:HD13	1:A:251:TRP:HE3	1.74	0.53
1:B:358:ALA:O	1:B:371:LYS:HE3	2.08	0.53
1:B:96:PHE:HB2	1:B:100:ILE:HG12	1.91	0.53
1:B:249:THR:CG2	1:B:251:TRP:HE1	2.22	0.53
2:B:1090:NAG:O7	2:B:1090:NAG:H3	2.09	0.53
1:A:175:GLU:HG3	1:A:177:HIS:H	1.72	0.52
1:B:381:HIS:CD2	1:B:399:THR:CG2	2.91	0.52
1:A:267:PHE:CE2	1:A:284:GLN:HB2	2.43	0.52
1:A:529:MET:CE	1:A:575:ILE:HG21	2.39	0.52
1:B:84:SER:O	1:B:85:SER:HB2	2.09	0.52
1:B:219:THR:O	1:B:271:THR:HB	2.10	0.52
1:B:462:LEU:N	1:B:462:LEU:HD12	2.24	0.52
1:A:109:ARG:O	1:A:135:LEU:HD12	2.08	0.52
1:B:334:VAL:HG12	1:B:335:TRP:N	2.24	0.52
1:A:132:ILE:HG21	1:A:176:PRO:HB3	1.91	0.52
1:B:641:LEU:HD11	1:B:651:GLY:HA3	1.91	0.52
1:A:175:GLU:HB3	1:A:178:LEU:CD1	2.40	0.52
1:B:403:TRP:CE3	1:B:422:GLU:HB2	2.45	0.52
1:A:346:THR:HG23	1:A:347:SER:N	2.25	0.52
1:A:415:TYR:HD2	1:A:436:GLN:HA	1.74	0.52
1:B:81:HIS:C	1:B:83:ASN:N	2.63	0.51
1:B:217:ASN:CB	1:B:306:GLU:OE1	2.55	0.51
1:B:96:PHE:CG	1:B:100:ILE:HD11	2.45	0.51
1:A:70:GLN:HG2	1:A:71:GLU:HG3	1.91	0.51
1:B:598:ARG:NE	1:B:601:THR:HG21	2.21	0.51
1:B:332:THR:O	1:B:334:VAL:HG23	2.11	0.51
1:A:219:THR:O	1:A:271:THR:HB	2.11	0.51
1:B:473:CYS:O	1:B:479:PRO:HA	2.11	0.51
1:B:132:ILE:HG21	1:B:176:PRO:HB3	1.91	0.51

Continued on next page...

Continued from previous page...

Atom-1	Atom-2	Interatomic distance (Å)	Clash overlap (Å)
1:B:639:MET:HE1	1:B:689:VAL:HA	1.91	0.51
1:A:96:PHE:HB2	1:A:100:ILE:HG12	1.92	0.51
1:B:70:GLN:HG2	1:B:71:GLU:HG3	1.91	0.51
1:A:84:SER:O	1:A:85:SER:HB2	2.11	0.51
1:A:229:THR:HG21	3:A:1227:NDG:C6	2.40	0.50
1:B:485:ARG:HB3	1:B:492:LEU:HD21	1.93	0.50
1:A:473:CYS:O	1:A:479:PRO:HA	2.11	0.50
1:B:116:TYR:O	1:B:117:ASN:HB2	2.10	0.50
1:B:415:TYR:HD2	1:B:436:GLN:HA	1.75	0.50
1:A:747:THR:HG21	1:B:726:ASP:HA	1.94	0.50
1:B:632:TYR:O	1:B:635:TYR:HB3	2.12	0.50
1:A:81:HIS:C	1:A:83:ASN:N	2.65	0.50
1:A:61:VAL:CG2	1:A:67:LEU:HG	2.41	0.50
1:B:228:ASP:OD1	1:B:262:PRO:HB3	2.11	0.50
1:A:40:THR:HB	1:A:570:SER:OG	2.11	0.50
1:B:690:MET:HB3	1:B:723:ALA:HB2	1.93	0.50
1:A:389:ARG:HG3	1:A:394:VAL:CG1	2.42	0.50
1:B:761:GLN:HB3	1:B:767:ARG:HB2	1.94	0.50
1:A:474:ARG:O	1:A:475:GLY:O	2.29	0.49
1:A:116:TYR:O	1:A:117:ASN:HB2	2.12	0.49
1:B:383:CYS:HB3	1:B:397:PHE:HA	1.93	0.49
1:A:508:VAL:HG12	1:A:510:MET:HE2	1.94	0.49
2:B:1521:NAG:H3	2:B:1521:NAG:O7	2.11	0.49
1:B:688:THR:HG22	1:B:691:SER:N	2.17	0.49
1:A:242:GLU:HG3	1:B:659:ARG:NH1	2.28	0.49
1:A:650:CYS:HB3	1:A:700:GLU:HB2	1.94	0.49
1:A:334:VAL:HG12	1:A:335:TRP:N	2.27	0.49
1:A:247:PRO:HD3	1:B:715:GLN:NE2	2.27	0.49
1:A:122:TRP:CE3	1:A:122:TRP:N	2.81	0.49
1:A:632:TYR:O	1:A:635:TYR:HB3	2.13	0.49
1:B:318:GLN:NE2	1:B:670:ARG:HB2	2.28	0.49
1:B:40:THR:HB	1:B:570:SER:OG	2.13	0.49
1:B:122:TRP:N	1:B:122:TRP:CE3	2.81	0.48
1:A:688:THR:HG21	1:A:690:MET:HG2	1.94	0.48
1:A:299:CYS:HB2	1:A:312:GLN:O	2.13	0.48
1:A:144:GLU:HG3	1:A:179:PRO:N	2.28	0.48
1:A:403:TRP:CE3	1:A:422:GLU:HB2	2.49	0.48
1:A:462:LEU:N	1:A:462:LEU:HD12	2.28	0.48
1:A:249:THR:CG2	1:A:251:TRP:HE1	2.26	0.48
1:A:61:VAL:CG1	1:A:109:ARG:NE	2.77	0.48
1:A:343:HIS:HA	1:A:389:ARG:HD2	1.95	0.48

Continued on next page...

Continued from previous page...

Atom-1	Atom-2	Interatomic distance (Å)	Clash overlap (Å)
1:B:306:GLU:O	1:B:306:GLU:HG3	2.13	0.48
1:A:601:THR:HG22	1:A:602:LEU:HD23	1.96	0.48
1:B:61:VAL:CG1	1:B:109:ARG:NE	2.77	0.48
1:A:217:ASN:CB	1:A:306:GLU:OE1	2.56	0.48
1:A:624:ARG:HG2	1:A:764:PHE:CD2	2.49	0.48
1:B:690:MET:CE	1:B:720:ILE:CA	2.91	0.48
1:A:96:PHE:CG	1:A:100:ILE:HD11	2.48	0.48
1:A:460:VAL:CG2	1:A:461:SER:N	2.75	0.48
1:B:61:VAL:CG2	1:B:67:LEU:HG	2.43	0.48
1:B:624:ARG:HG2	1:B:764:PHE:CD2	2.49	0.47
1:B:277:THR:HG22	1:B:278:THR:N	2.29	0.47
1:B:650:CYS:HB3	1:B:700:GLU:HB2	1.96	0.47
1:B:175:GLU:HB3	1:B:178:LEU:HD12	1.96	0.47
1:A:536:ASP:HB3	1:A:539:LYS:NZ	2.29	0.47
1:A:277:THR:CG2	1:A:279:THR:O	2.62	0.47
1:B:61:VAL:HG11	1:B:109:ARG:NE	2.29	0.47
1:A:421:ASN:ND2	1:A:427:PRO:HA	2.29	0.47
1:B:688:THR:HG21	1:B:690:MET:HG2	1.93	0.47
1:B:601:THR:CG2	1:B:602:LEU:N	2.70	0.47
1:A:130:TYR:HB2	1:A:146:ILE:HD13	1.97	0.47
1:B:174:ILE:H	1:B:174:ILE:CD1	2.23	0.47
1:B:460:VAL:CG2	1:B:461:SER:N	2.76	0.47
1:A:485:ARG:HB3	1:A:492:LEU:HD21	1.96	0.47
1:A:61:VAL:HG11	1:A:109:ARG:NE	2.30	0.47
1:A:306:GLU:HG3	1:A:306:GLU:O	2.15	0.47
1:B:144:GLU:HG3	1:B:179:PRO:N	2.28	0.47
1:A:175:GLU:HB3	1:A:178:LEU:HD12	1.97	0.47
1:A:80:GLU:H	1:A:493:ARG:HH22	1.63	0.46
1:A:383:CYS:CB	1:A:397:PHE:HA	2.46	0.46
1:B:346:THR:CG2	1:B:347:SER:N	2.79	0.46
1:A:389:ARG:HG3	1:A:394:VAL:HG13	1.96	0.46
1:A:454:ARG:HD3	1:A:478:LEU:O	2.16	0.46
1:A:639:MET:HE1	1:A:689:VAL:HA	1.93	0.46
1:A:746:SER:O	1:A:750:GLN:HG3	2.16	0.46
1:A:612:ARG:NH1	1:A:612:ARG:HG3	2.31	0.46
1:A:518:ILE:CG2	1:A:519:VAL:N	2.79	0.46
1:B:742:GLY:O	1:B:743:ILE:C	2.54	0.46
1:B:398:ILE:HG22	1:B:398:ILE:O	2.15	0.46
1:A:460:VAL:CG2	1:A:461:SER:H	2.29	0.46
2:A:1521:NAG:O7	2:A:1521:NAG:H3	2.16	0.46
1:A:318:GLN:NE2	1:A:670:ARG:HB2	2.31	0.45

Continued on next page...

Continued from previous page...

Atom-1	Atom-2	Interatomic distance (Å)	Clash overlap (Å)
1:A:174:ILE:H	1:A:174:ILE:CD1	2.24	0.45
1:A:178:LEU:HB3	1:A:179:PRO:HD2	1.98	0.45
1:A:639:MET:HE3	1:A:689:VAL:CA	2.45	0.45
1:B:277:THR:CG2	1:B:279:THR:O	2.64	0.45
3:A:1227:NDG:C3	3:A:1227:NDG:O7	2.64	0.45
1:A:233:LEU:HD23	1:A:253:PRO:HA	1.98	0.45
2:A:1083:NAG:O7	2:A:1083:NAG:H3	2.15	0.45
1:B:421:ASN:ND2	1:B:427:PRO:HA	2.31	0.45
1:B:746:SER:O	1:B:750:GLN:HG3	2.17	0.45
1:A:151:GLN:NE2	1:A:165:VAL:HG12	2.32	0.45
1:B:61:VAL:HG21	1:B:67:LEU:HG	1.99	0.45
1:A:346:THR:CG2	1:A:347:SER:N	2.80	0.45
1:A:709:ASP:OD2	1:A:741:HIS:HA	2.16	0.45
1:B:93:PHE:O	1:B:100:ILE:HG13	2.17	0.45
1:B:460:VAL:CG2	1:B:461:SER:H	2.30	0.45
1:B:399:THR:CG2	1:B:403:TRP:CH2	3.00	0.45
1:B:299:CYS:HB2	1:B:312:GLN:O	2.17	0.45
1:A:61:VAL:HG21	1:A:67:LEU:HG	1.98	0.45
1:A:398:ILE:HG22	1:A:398:ILE:O	2.16	0.44
1:B:612:ARG:HG3	1:B:612:ARG:NH1	2.30	0.44
1:B:690:MET:HE2	1:B:720:ILE:HA	1.99	0.44
1:B:412:THR:CG2	1:B:413:SER:H	2.29	0.44
1:B:289:ALA:C	1:B:291:VAL:H	2.21	0.44
1:B:518:ILE:CG2	1:B:519:VAL:N	2.79	0.44
1:B:690:MET:HB3	1:B:723:ALA:CB	2.47	0.44
1:A:386:GLN:HG3	1:A:390:LYS:HZ1	1.81	0.44
1:B:84:SER:O	1:B:85:SER:CB	2.66	0.44
1:A:740:ASP:OD1	1:A:741:HIS:N	2.43	0.44
1:A:497:ASP:O	1:A:497:ASP:CG	2.55	0.44
1:A:690:MET:HB3	1:A:723:ALA:CB	2.46	0.44
1:A:342:GLU:O	1:A:389:ARG:HD3	2.17	0.44
1:A:412:THR:CG2	1:A:413:SER:H	2.31	0.44
1:A:415:TYR:CD2	1:A:436:GLN:HA	2.52	0.44
1:B:536:ASP:HB3	1:B:539:LYS:NZ	2.33	0.44
1:B:709:ASP:OD2	1:B:741:HIS:HA	2.18	0.44
1:B:383:CYS:CB	1:B:397:PHE:HA	2.47	0.44
1:B:233:LEU:HD23	1:B:253:PRO:HA	2.00	0.44
1:A:229:THR:HB	3:A:1227:NDG:H6C2	1.98	0.44
1:A:148:ASN:HD22	1:A:148:ASN:HA	1.58	0.44
1:B:71:GLU:O	1:B:72:ASN:HB2	2.17	0.44
1:A:84:SER:O	1:A:85:SER:CB	2.67	0.43

Continued on next page...

Continued from previous page...

Atom-1	Atom-2	Interatomic distance (Å)	Clash overlap (Å)
1:B:623:LYS:HD3	1:B:623:LYS:HA	1.88	0.43
1:B:215:SER:HB3	1:B:303:TRP:CZ2	2.53	0.43
1:B:615:LEU:HD23	1:B:620:VAL:CG1	2.48	0.43
1:B:403:TRP:CD2	1:B:422:GLU:HB2	2.54	0.43
1:B:652:ILE:HG21	1:B:756:MET:HE2	1.99	0.43
2:A:1521:NAG:O7	2:A:1521:NAG:C3	2.67	0.43
1:B:249:THR:HG21	1:B:251:TRP:HE1	1.82	0.43
1:B:233:LEU:CD1	1:B:251:TRP:HE3	2.31	0.43
1:A:690:MET:CE	1:A:720:ILE:CA	2.93	0.43
1:A:71:GLU:O	1:A:72:ASN:HB2	2.18	0.43
1:A:652:ILE:HG21	1:A:756:MET:HE2	1.99	0.43
1:A:277:THR:HG22	1:A:278:THR:N	2.33	0.43
1:A:469:TYR:O	1:A:469:TYR:CD1	2.72	0.43
1:B:639:MET:HE3	1:B:689:VAL:CA	2.49	0.43
1:B:130:TYR:HB2	1:B:146:ILE:HD13	2.00	0.43
1:B:303:TRP:CE2	1:B:309:ILE:HD12	2.54	0.42
1:B:151:GLN:NE2	1:B:165:VAL:HG12	2.33	0.42
1:A:639:MET:CE	1:A:689:VAL:HG22	2.49	0.42
1:B:222:ALA:HB1	1:B:266:PHE:CZ	2.53	0.42
1:B:415:TYR:CD2	1:B:436:GLN:HA	2.54	0.42
1:A:742:GLY:O	1:A:743:ILE:C	2.57	0.42
1:A:623:LYS:HA	1:A:623:LYS:HD3	1.85	0.42
1:B:740:ASP:OD1	1:B:741:HIS:N	2.41	0.42
1:A:246:TYR:CZ	1:B:232:PRO:HB2	2.54	0.42
1:A:615:LEU:HD23	1:A:620:VAL:CG1	2.50	0.42
1:A:93:PHE:O	1:A:100:ILE:HG13	2.19	0.42
1:A:399:THR:CG2	1:A:403:TRP:CH2	3.03	0.42
1:A:553:SER:O	1:A:585:GLY:N	2.48	0.42
1:A:761:GLN:HB3	1:A:767:ARG:H	1.83	0.42
1:A:343:HIS:ND1	1:A:394:VAL:HG11	2.34	0.42
1:B:320:TYR:CE2	1:B:322:VAL:HG23	2.54	0.42
1:A:168:ASN:O	1:A:194:ASN:HB2	2.19	0.42
1:B:91:SER:HA	1:B:94:GLU:CD	2.39	0.42
1:B:343:HIS:ND1	1:B:394:VAL:HG11	2.35	0.42
1:B:322:VAL:CG1	1:B:342:GLU:HG2	2.49	0.42
1:A:690:MET:HE1	1:A:720:ILE:CG1	2.50	0.42
1:B:601:THR:HG22	1:B:602:LEU:HD23	2.02	0.42
1:B:497:ASP:CG	1:B:497:ASP:O	2.58	0.42
1:A:289:ALA:C	1:A:291:VAL:H	2.23	0.42
1:A:303:TRP:CE2	1:A:309:ILE:HD12	2.54	0.42
1:B:156:SER:HA	1:B:214:TRP:CD1	2.55	0.42

Continued on next page...

Continued from previous page...

Atom-1	Atom-2	Interatomic distance (Å)	Clash overlap (Å)
1:A:529:MET:HE2	1:A:575:ILE:CG2	2.49	0.41
1:B:601:THR:CG2	1:B:602:LEU:H	2.28	0.41
1:A:595:ILE:HD13	1:A:595:ILE:HA	1.81	0.41
1:A:74:ILE:HB	1:A:88:LEU:HB2	2.02	0.41
1:A:403:TRP:CD2	1:A:422:GLU:HB2	2.55	0.41
1:A:233:LEU:CD1	1:A:251:TRP:HE3	2.34	0.41
1:B:161:LYS:HG2	1:B:174:ILE:HA	2.01	0.41
1:A:752:ILE:O	1:A:756:MET:HG3	2.20	0.41
1:A:524:ARG:HG2	1:A:524:ARG:HH11	1.85	0.41
1:B:216:PRO:O	1:B:217:ASN:HB2	2.20	0.41
1:A:320:TYR:CE2	1:A:322:VAL:HG23	2.55	0.41
1:B:518:ILE:HD13	1:B:518:ILE:HA	1.89	0.41
1:A:231:VAL:HA	1:A:232:PRO:HD3	1.93	0.41
1:B:80:GLU:H	1:B:493:ARG:HH22	1.67	0.41
1:A:655:ALA:N	1:A:656:PRO:CD	2.84	0.41
1:B:103:TYR:HA	1:B:113:LEU:O	2.20	0.41
1:A:464:LYS:HA	1:A:464:LYS:HD3	1.87	0.41
1:B:216:PRO:O	1:B:306:GLU:OE2	2.39	0.41
1:B:639:MET:HE3	1:B:689:VAL:CG2	2.51	0.41
1:B:96:PHE:HB2	1:B:100:ILE:CG1	2.51	0.41
1:B:659:ARG:HG2	1:B:662:TYR:CE2	2.55	0.41
1:B:75:LEU:HB2	1:B:77:PHE:HE1	1.85	0.41
1:A:601:THR:CG2	1:A:602:LEU:N	2.69	0.41
1:B:639:MET:CE	1:B:689:VAL:HG22	2.51	0.41
1:B:343:HIS:HA	1:B:389:ARG:HD3	2.02	0.41
1:A:354:ARG:HD3	1:A:552:CYS:SG	2.60	0.41
1:A:216:PRO:O	1:A:306:GLU:OE2	2.39	0.41
1:A:91:SER:HA	1:A:94:GLU:CD	2.41	0.41
1:B:524:ARG:HH11	1:B:524:ARG:HG2	1.85	0.41
1:A:152:TRP:CE2	1:A:210:SER:HB2	2.56	0.41
1:B:690:MET:HE1	1:B:720:ILE:CG1	2.50	0.40
1:B:73:ASN:HD21	1:B:90:ASN:CG	2.21	0.40
1:B:178:LEU:HB3	1:B:179:PRO:HD2	2.01	0.40
1:A:322:VAL:CG1	1:A:342:GLU:HG2	2.51	0.40
1:B:469:TYR:O	1:B:469:TYR:CD1	2.74	0.40
1:A:73:ASN:HD21	1:A:90:ASN:CG	2.23	0.40
1:A:104:SER:HB3	1:A:113:LEU:HB2	2.04	0.40
1:A:586:TYR:H	1:A:586:TYR:HD1	1.68	0.40
3:A:1227:NDG:O7	3:A:1227:NDG:H3	2.21	0.40
1:A:215:SER:HB3	1:A:303:TRP:CZ2	2.56	0.40
1:A:297:TYR:CE2	1:A:666:VAL:HG22	2.56	0.40

Continued on next page...

Continued from previous page...

Atom-1	Atom-2	Interatomic distance (Å)	Clash overlap (Å)
1:A:601:THR:CG2	1:A:602:LEU:H	2.27	0.40
1:B:161:LYS:NZ	1:B:218:GLY:O	2.52	0.40
3:B:1227:NDG:O3	3:B:1227:NDG:O7	2.37	0.40
1:A:161:LYS:HG2	1:A:174:ILE:HA	2.03	0.40
1:A:175:GLU:OE2	1:A:176:PRO:HD2	2.21	0.40

There are no symmetry-related clashes.

5.3 Torsion angles [i](#)

5.3.1 Protein backbone [i](#)

In the following table, the Percentiles column shows the percent Ramachandran outliers of the chain as a percentile score with respect to all X-ray entries followed by that with respect to entries of similar resolution.

The Analysed column shows the number of residues for which the backbone conformation was analysed, and the total number of residues.

Mol	Chain	Analysed	Favoured	Allowed	Outliers	Percentiles	
1	A	728/730 (100%)	645 (89%)	67 (9%)	16 (2%)	8	28
1	B	728/730 (100%)	647 (89%)	65 (9%)	16 (2%)	8	28
All	All	1456/1460 (100%)	1292 (89%)	132 (9%)	32 (2%)	8	28

All (32) Ramachandran outliers are listed below:

Mol	Chain	Res	Type
1	A	80	GLU
1	A	475	GLY
1	A	533	PRO
1	A	585	GLY
1	B	80	GLU
1	B	475	GLY
1	B	533	PRO
1	B	585	GLY
1	A	82	GLY
1	A	85	SER
1	A	91	SER
1	A	126	TYR
1	A	143	GLU

Continued on next page...

Continued from previous page...

Mol	Chain	Res	Type
1	A	450	LEU
1	A	498	ASN
1	B	82	GLY
1	B	85	SER
1	B	91	SER
1	B	126	TYR
1	B	143	GLU
1	B	450	LEU
1	B	318	GLN
1	B	498	ASN
1	A	92	THR
1	A	318	GLN
1	B	92	THR
1	A	147	PRO
1	B	147	PRO
1	B	391	PRO
1	A	391	PRO
1	A	159	GLY
1	B	159	GLY

5.3.2 Protein sidechains ⓘ

In the following table, the Percentiles column shows the percent sidechain outliers of the chain as a percentile score with respect to all X-ray entries followed by that with respect to entries of similar resolution.

The Analysed column shows the number of residues for which the sidechain conformation was analysed, and the total number of residues.

Mol	Chain	Analysed	Rotameric	Outliers	Percentiles	
1	A	649/651 (100%)	616 (95%)	33 (5%)	29	63
1	B	649/651 (100%)	617 (95%)	32 (5%)	31	65
All	All	1298/1302 (100%)	1233 (95%)	65 (5%)	30	64

All (65) residues with a non-rotameric sidechain are listed below:

Mol	Chain	Res	Type
1	A	52	ARG
1	A	90	ASN
1	A	94	GLU
1	A	122	TRP

Continued on next page...

Continued from previous page...

Mol	Chain	Res	Type
1	A	139	GLN
1	A	146	ILE
1	A	148	ASN
1	A	264	VAL
1	A	299	CYS
1	A	300	ASP
1	A	340	THR
1	A	346	THR
1	A	349	THR
1	A	393	GLN
1	A	394	VAL
1	A	395	CYS
1	A	414	ASP
1	A	449	ASP
1	A	453	GLU
1	A	470	GLN
1	A	483	LEU
1	A	485	ARG
1	A	516	ASP
1	A	533	PRO
1	A	547	VAL
1	A	586	TYR
1	A	598	ARG
1	A	624	ARG
1	A	661	GLU
1	A	690	MET
1	A	698	GLN
1	A	707	THR
1	A	716	GLN
1	B	52	ARG
1	B	94	GLU
1	B	122	TRP
1	B	139	GLN
1	B	146	ILE
1	B	148	ASN
1	B	264	VAL
1	B	299	CYS
1	B	300	ASP
1	B	340	THR
1	B	346	THR
1	B	349	THR
1	B	393	GLN

Continued on next page...

Continued from previous page...

Mol	Chain	Res	Type
1	B	394	VAL
1	B	395	CYS
1	B	414	ASP
1	B	449	ASP
1	B	453	GLU
1	B	470	GLN
1	B	483	LEU
1	B	485	ARG
1	B	516	ASP
1	B	533	PRO
1	B	547	VAL
1	B	586	TYR
1	B	598	ARG
1	B	624	ARG
1	B	661	GLU
1	B	690	MET
1	B	698	GLN
1	B	707	THR
1	B	716	GLN

Some sidechains can be flipped to improve hydrogen bonding and reduce clashes. All (30) such sidechains are listed below:

Mol	Chain	Res	Type
1	A	73	ASN
1	A	148	ASN
1	A	151	GLN
1	A	341	GLN
1	A	381	HIS
1	A	386	GLN
1	A	470	GLN
1	A	484	HIS
1	A	498	ASN
1	A	593	HIS
1	A	698	GLN
1	A	716	GLN
1	A	719	GLN
1	A	749	HIS
1	A	758	HIS
1	B	73	ASN
1	B	148	ASN
1	B	151	GLN
1	B	341	GLN

Continued on next page...

Continued from previous page...

Mol	Chain	Res	Type
1	B	381	HIS
1	B	386	GLN
1	B	470	GLN
1	B	484	HIS
1	B	498	ASN
1	B	593	HIS
1	B	698	GLN
1	B	716	GLN
1	B	719	GLN
1	B	749	HIS
1	B	758	HIS

5.3.3 RNA [i](#)

There are no RNA molecules in this entry.

5.4 Non-standard residues in protein, DNA, RNA chains [i](#)

There are no non-standard protein/DNA/RNA residues in this entry.

5.5 Carbohydrates [i](#)

There are no carbohydrates in this entry.

5.6 Ligand geometry [i](#)

10 ligands are modelled in this entry.

In the following table, the Counts columns list the number of bonds (or angles) for which Mogul statistics could be retrieved, the number of bonds (or angles) that are observed in the model and the number of bonds (or angles) that are defined in the chemical component dictionary. The Link column lists molecule types, if any, to which the group is linked. The Z score for a bond length (or angle) is the number of standard deviations the observed value is removed from the expected value. A bond length (or angle) with $|Z| > 2$ is considered an outlier worth inspection. RMSZ is the root-mean-square of all Z scores of the bond lengths (or angles).

Mol	Type	Chain	Res	Link	Bond lengths			Bond angles		
					Counts	RMSZ	$\# Z > 2$	Counts	RMSZ	$\# Z > 2$
2	NAG	A	1083	1	14,14,15	0.77	0	15,19,21	0.74	0
3	NDG	A	1090	1	14,14,15	1.29	2 (14%)	15,19,21	1.13	2 (13%)

Mol	Type	Chain	Res	Link	Bond lengths			Bond angles		
					Counts	RMSZ	# Z > 2	Counts	RMSZ	# Z > 2
3	NDG	A	1227	1	14,14,15	0.62	0	15,19,21	1.14	1 (6%)
2	NAG	A	1319	1	14,14,15	0.62	0	15,19,21	1.51	1 (6%)
2	NAG	A	1521	1	14,14,15	0.66	0	15,19,21	0.95	1 (6%)
3	NDG	B	1083	1	14,14,15	1.12	1 (7%)	15,19,21	0.71	0
2	NAG	B	1090	1	14,14,15	0.83	1 (7%)	15,19,21	0.71	0
3	NDG	B	1227	1	14,14,15	0.60	0	15,19,21	1.06	1 (6%)
2	NAG	B	1319	1	14,14,15	0.71	0	15,19,21	1.60	2 (13%)
2	NAG	B	1521	1	14,14,15	0.53	0	15,19,21	0.75	0

In the following table, the Chirals column lists the number of chiral outliers, the number of chiral centers analysed, the number of these observed in the model and the number defined in the chemical component dictionary. Similar counts are reported in the Torsion and Rings columns. '-' means no outliers of that kind were identified.

Mol	Type	Chain	Res	Link	Chirals	Torsions	Rings
2	NAG	A	1083	1	-	0/6/23/26	0/1/1/1
3	NDG	A	1090	1	-	0/6/23/26	0/1/1/1
3	NDG	A	1227	1	-	0/6/23/26	0/1/1/1
2	NAG	A	1319	1	-	0/6/23/26	0/1/1/1
2	NAG	A	1521	1	-	0/6/23/26	0/1/1/1
3	NDG	B	1083	1	-	0/6/23/26	0/1/1/1
2	NAG	B	1090	1	-	0/6/23/26	0/1/1/1
3	NDG	B	1227	1	-	0/6/23/26	0/1/1/1
2	NAG	B	1319	1	-	0/6/23/26	0/1/1/1
2	NAG	B	1521	1	-	0/6/23/26	0/1/1/1

All (4) bond length outliers are listed below:

Mol	Chain	Res	Type	Atoms	Z	Observed(Å)	Ideal(Å)
2	B	1090	NAG	C1-C2	2.09	1.55	1.52
3	A	1090	NDG	C3-C2	2.78	1.58	1.52
3	A	1090	NDG	C1-C2	3.34	1.57	1.52
3	B	1083	NDG	C1-C2	3.43	1.57	1.52

All (8) bond angle outliers are listed below:

Mol	Chain	Res	Type	Atoms	Z	Observed(°)	Ideal(°)
2	B	1319	NAG	C4-C3-C2	-4.88	103.65	111.23
2	A	1319	NAG	C4-C3-C2	-4.22	104.67	111.23
3	A	1227	NDG	C4-C3-C2	-3.20	106.26	111.23

Continued on next page...

Continued from previous page...

Mol	Chain	Res	Type	Atoms	Z	Observed(°)	Ideal(°)
3	B	1227	NDG	C4-C3-C2	-3.03	106.52	111.23
2	A	1521	NAG	C4-C3-C2	-2.11	107.95	111.23
3	A	1090	NDG	C2-N2-C7	2.04	125.66	123.04
2	B	1319	NAG	C3-C2-N2	2.11	115.61	110.56
3	A	1090	NDG	C4-C3-C2	2.50	115.12	111.23

There are no chirality outliers.

There are no torsion outliers.

There are no ring outliers.

7 monomers are involved in 15 short contacts:

Mol	Chain	Res	Type	Clashes	Symm-Clashes
2	A	1083	NAG	1	0
3	A	1227	NDG	5	0
2	A	1521	NAG	2	0
3	B	1083	NDG	2	0
2	B	1090	NAG	1	0
3	B	1227	NDG	3	0
2	B	1521	NAG	1	0

5.7 Other polymers [i](#)

There are no such residues in this entry.

5.8 Polymer linkage issues [i](#)

There are no chain breaks in this entry.

6 Fit of model and data ⓘ

6.1 Protein, DNA and RNA chains ⓘ

In the following table, the column labelled ‘#RSRZ> 2’ contains the number (and percentage) of RSRZ outliers, followed by percent RSRZ outliers for the chain as percentile scores relative to all X-ray entries and entries of similar resolution. The OWAB column contains the minimum, median, 95th percentile and maximum values of the occupancy-weighted average B-factor per residue. The column labelled ‘Q< 0.9’ lists the number of (and percentage) of residues with an average occupancy less than 0.9.

Mol	Chain	Analysed	<RSRZ>	#RSRZ>2	OWAB(Å ²)	Q<0.9
1	A	730/730 (100%)	-0.27	12 (1%) 74 66	33, 54, 91, 147	0
1	B	730/730 (100%)	-0.12	20 (2%) 58 45	36, 63, 104, 161	0
All	All	1460/1460 (100%)	-0.19	32 (2%) 65 54	33, 58, 99, 161	0

All (32) RSRZ outliers are listed below:

Mol	Chain	Res	Type	RSRZ
1	A	767	ARG	6.6
1	B	442	ASN	5.2
1	B	393	GLN	5.0
1	B	392	GLU	4.6
1	A	392	GLU	4.2
1	A	391	PRO	3.8
1	B	376	LYS	3.2
1	B	438	THR	3.0
1	A	94	GLU	2.8
1	A	393	GLN	2.8
1	A	38	ARG	2.7
1	B	391	PRO	2.7
1	B	439	ASP	2.5
1	B	503	LYS	2.5
1	B	444	LYS	2.5
1	A	376	LYS	2.4
1	A	98	ASP	2.4
1	B	348	ALA	2.4
1	A	99	SER	2.4
1	B	415	TYR	2.4
1	B	217	ASN	2.4
1	A	522	GLU	2.3
1	B	124	HIS	2.2
1	B	401	GLY	2.1

Continued on next page...

Continued from previous page...

Mol	Chain	Res	Type	RSRZ
1	B	469	TYR	2.1
1	B	538	SER	2.1
1	B	509	GLN	2.0
1	B	138	ARG	2.0
1	A	509	GLN	2.0
1	B	157	GLN	2.0
1	B	98	ASP	2.0
1	A	137	LYS	2.0

6.2 Non-standard residues in protein, DNA, RNA chains ⓘ

There are no non-standard protein/DNA/RNA residues in this entry.

6.3 Carbohydrates ⓘ

There are no carbohydrates in this entry.

6.4 Ligands ⓘ

In the following table, the Atoms column lists the number of modelled atoms in the group and the number defined in the chemical component dictionary. LLDF column lists the quality of electron density of the group with respect to its neighbouring residues in protein, DNA or RNA chains. The B-factors column lists the minimum, median, 95th percentile and maximum values of B factors of atoms in the group. The column labelled 'Q< 0.9' lists the number of atoms with occupancy less than 0.9.

Mol	Type	Chain	Res	Atoms	RSCC	RSR	LLDF	B-factors(Å ²)	Q<0.9
2	NAG	B	1521	14/15	0.74	0.38	5.94	102,102,102,102	0
3	NDG	B	1083	14/15	0.67	0.35	5.69	108,108,108,108	0
3	NDG	B	1227	14/15	0.83	0.34	5.04	86,86,86,86	0
2	NAG	B	1319	14/15	0.85	0.30	4.72	68,68,68,68	0
2	NAG	A	1521	14/15	0.76	0.33	4.13	110,110,110,110	0
2	NAG	A	1083	14/15	0.72	0.28	3.66	88,88,88,88	0
3	NDG	A	1227	14/15	0.91	0.31	3.09	73,73,73,73	0
2	NAG	A	1319	14/15	0.88	0.26	2.11	57,57,57,57	0
2	NAG	B	1090	14/15	0.76	0.36	-	104,104,104,104	0
3	NDG	A	1090	14/15	0.70	0.31	-	83,83,83,83	0

6.5 Other polymers

There are no such residues in this entry.