



# Full wwPDB X-ray Structure Validation Report ⓘ

Feb 1, 2016 – 08:53 AM GMT

PDB ID : 3GEE  
Title : Crystal structure of MnmE from *Chlorobium tepidum* in complex with GDP and FOLINIC ACID  
Authors : Meyer, S.; Wittinghofer, A.  
Deposited on : 2009-02-25  
Resolution : 2.95 Å(reported)

This is a Full wwPDB X-ray Structure Validation Report for a publicly released PDB entry.  
We welcome your comments at [validation@mail.wwpdb.org](mailto:validation@mail.wwpdb.org)  
A user guide is available at  
<http://wwpdb.org/validation/2016/XrayValidationReportHelp>  
with specific help available everywhere you see the ⓘ symbol.

---

The following versions of software and data (see [references ⓘ](#)) were used in the production of this report:

MolProbity : 4.02b-467  
Mogul : 1.7 (RC4), CSD as536be (2015)  
Xtriage (Phenix) : 1.9-1692  
EDS : rb-20026688  
Percentile statistics : 20151230.v01 (using entries in the PDB archive December 30th 2015)  
Refmac : 5.8.0135  
CCP4 : 6.5.0  
Ideal geometry (proteins) : Engh & Huber (2001)  
Ideal geometry (DNA, RNA) : Parkinson et al. (1996)  
Validation Pipeline (wwPDB-VP) : trunk26865

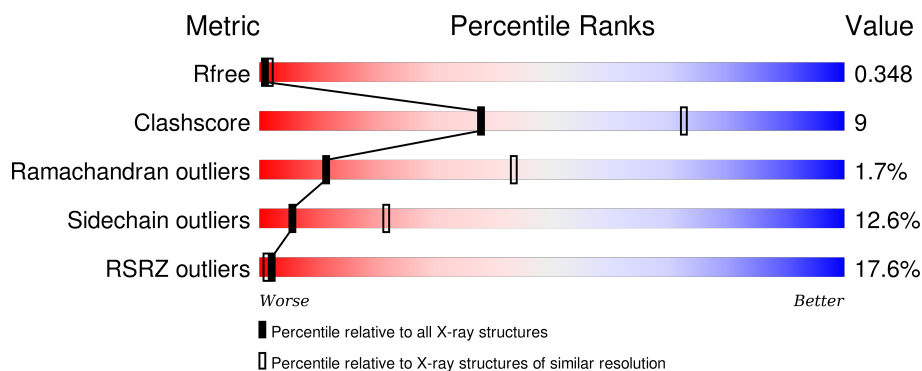
# 1 Overall quality at a glance

The following experimental techniques were used to determine the structure:

## *X-RAY DIFFRACTION*

The reported resolution of this entry is 2.95 Å.

Percentile scores (ranging between 0-100) for global validation metrics of the entry are shown in the following graphic. The table shows the number of entries on which the scores are based.



Metric	Whole archive (#Entries)	Similar resolution (#Entries, resolution range(Å))
$R_{free}$	91344	2184 (3.00-2.92)
Clashscore	102246	2552 (3.00-2.92)
Ramachandran outliers	100387	2468 (3.00-2.92)
Sidechain outliers	100360	2471 (3.00-2.92)
RSRZ outliers	91569	2201 (3.00-2.92)

The table below summarises the geometric issues observed across the polymeric chains and their fit to the electron density. The red, orange, yellow and green segments on the lower bar indicate the fraction of residues that contain outliers for  $\geq 3$ , 2, 1 and 0 types of geometric quality criteria. A grey segment represents the fraction of residues that are not modelled. The numeric value for each fraction is indicated below the corresponding segment, with a dot representing fractions  $\leq 5\%$ . The upper red bar (where present) indicates the fraction of residues that have poor fit to the electron density. The numeric value is given above the bar.

Mol	Chain	Length	Quality of chain
1	A	476	<div> <div>16%</div> <div>67%</div> <div>18%</div> <div>•</div> <div>10%</div> </div>

## 2 Entry composition [i](#)

There are 3 unique types of molecules in this entry. The entry contains 3321 atoms, of which 0 are hydrogens and 0 are deuteriums.

In the tables below, the ZeroOcc column contains the number of atoms modelled with zero occupancy, the AltConf column contains the number of residues with at least one atom in alternate conformation and the Trace column contains the number of residues modelled with at most 2 atoms.

- Molecule 1 is a protein called tRNA modification GTPase mnME.

Mol	Chain	Residues	Atoms					ZeroOcc	AltConf	Trace
1	A	427	Total	C	N	O	S	0	0	0
			3259	2041	574	629	15			

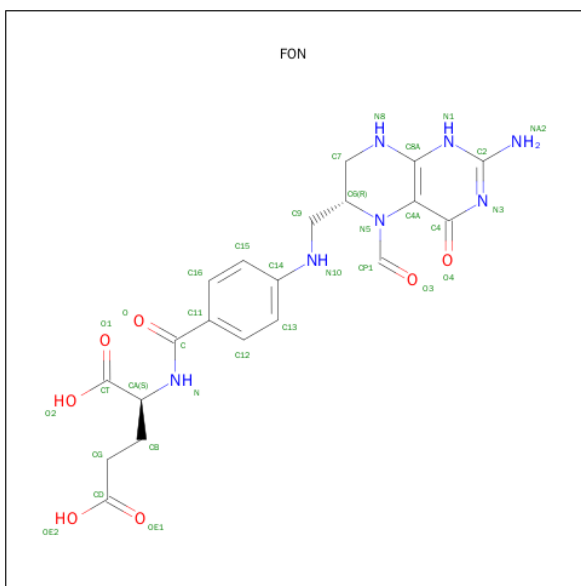
There are 3 discrepancies between the modelled and reference sequences:

Chain	Residue	Modelled	Actual	Comment	Reference
A	-2	GLY	-	EXPRESSION TAG	UNP Q8KAS1
A	-1	SER	-	EXPRESSION TAG	UNP Q8KAS1
A	0	HIS	-	EXPRESSION TAG	UNP Q8KAS1

- Molecule 2 is GUANOSINE-5'-DIPHOSPHATE (three-letter code: GDP) (formula:  $C_{10}H_{15}N_5O_{11}P_2$ ).



- Molecule 3 is FOLINIC ACID (three-letter code: FON) (formula:  $\text{C}_{20}\text{H}_{23}\text{N}_7\text{O}_7$ ).

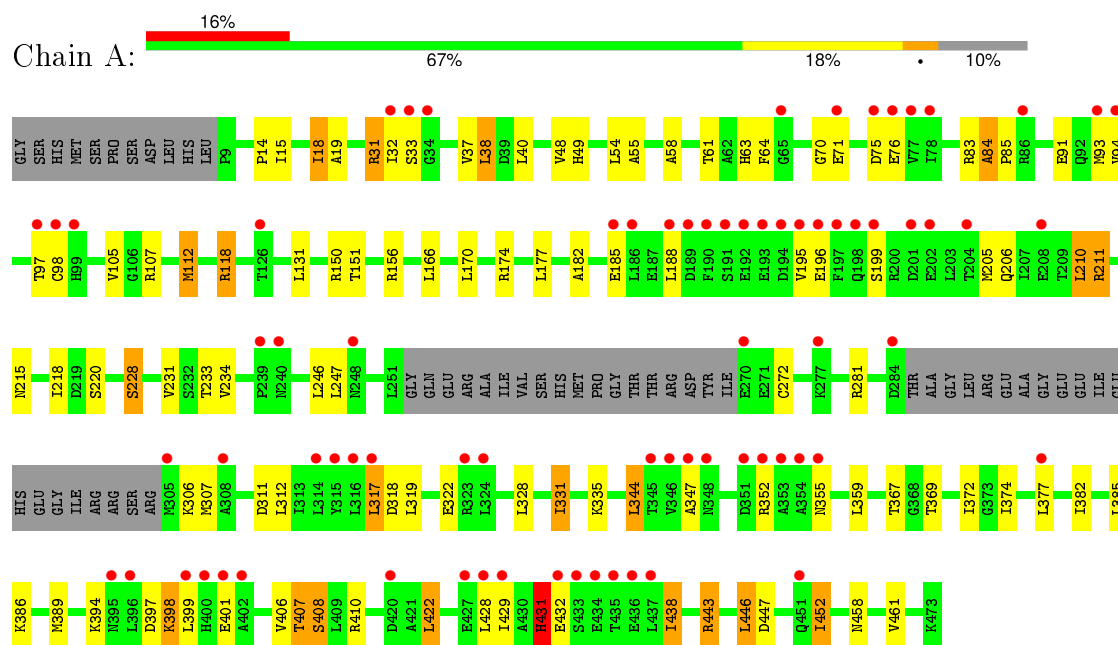


Mol	Chain	Residues	Atoms				ZeroOcc	AltConf
3	A	1	Total	C	N	O	0	0
			34	20	7	7		

### 3 Residue-property plots [i](#)

These plots are drawn for all protein, RNA and DNA chains in the entry. The first graphic for a chain summarises the proportions of errors displayed in the second graphic. The second graphic shows the sequence view annotated by issues in geometry and electron density. Residues are color-coded according to the number of geometric quality criteria for which they contain at least one outlier: green = 0, yellow = 1, orange = 2 and red = 3 or more. A red dot above a residue indicates a poor fit to the electron density ( $\text{RSRZ} > 2$ ). Stretches of 2 or more consecutive residues without any outlier are shown as a green connector. Residues present in the sample, but not in the model, are shown in grey.

- Molecule 1: tRNA modification GTPase mmmE



## 4 Data and refinement statistics

Property	Value	Source
Space group	I 41 2 2	Depositor
Cell constants a, b, c, $\alpha$ , $\beta$ , $\gamma$	130.80 Å   130.80 Å   200.61 Å 90.00°   90.00°   90.00°	Depositor
Resolution (Å)	19.90 – 2.95 19.90 – 2.95	Depositor EDS
% Data completeness (in resolution range)	99.2 (19.90-2.95) 99.2 (19.90-2.95)	Depositor EDS
$R_{merge}$	0.08	Depositor
$R_{sym}$	0.06	Depositor
$\langle I/\sigma(I) \rangle$ <sup>1</sup>	1.75 (at 2.93 Å)	Xtriage
Refinement program	REFMAC 5.2.0019	Depositor
R, $R_{free}$	0.232   ,   0.270 0.309   ,   0.348	Depositor DCC
$R_{free}$ test set	941 reflections (5.37%)	DCC
Wilson B-factor (Å <sup>2</sup> )	98.3	Xtriage
Anisotropy	0.204	Xtriage
Bulk solvent $k_{sol}$ (e/Å <sup>3</sup> ), $B_{sol}$ (Å <sup>2</sup> )	0.32 , 55.5	EDS
Estimated twinning fraction	No twinning to report.	Xtriage
L-test for twinning <sup>2</sup>	$\langle  L  \rangle = 0.47$ , $\langle L^2 \rangle = 0.30$	Xtriage
Outliers	0 of 18469 reflections	Xtriage
$F_o, F_c$ correlation	0.89	EDS
Total number of atoms	3321	wwPDB-VP
Average B, all atoms (Å <sup>2</sup> )	106.0	wwPDB-VP

Xtriage's analysis on translational NCS is as follows: *The largest off-origin peak in the Patterson function is 3.42% of the height of the origin peak. No significant pseudotranslation is detected.*

<sup>1</sup>Intensities estimated from amplitudes.

<sup>2</sup>Theoretical values of  $\langle |L| \rangle$ ,  $\langle L^2 \rangle$  for acentric reflections are 0.5, 0.375 respectively for untwinned datasets, and 0.333, 0.2 for perfectly twinned datasets.

## 5 Model quality

### 5.1 Standard geometry

Bond lengths and bond angles in the following residue types are not validated in this section: GDP, FON

The Z score for a bond length (or angle) is the number of standard deviations the observed value is removed from the expected value. A bond length (or angle) with  $|Z| > 5$  is considered an outlier worth inspection. RMSZ is the root-mean-square of all Z scores of the bond lengths (or angles).

Mol	Chain	Bond lengths		Bond angles	
		RMSZ	$\# Z  > 5$	RMSZ	$\# Z  > 5$
1	A	0.34	0/3297	0.57	0/4449

There are no bond length outliers.

There are no bond angle outliers.

There are no chirality outliers.

There are no planarity outliers.

### 5.2 Too-close contacts

In the following table, the Non-H and H(model) columns list the number of non-hydrogen atoms and hydrogen atoms in the chain respectively. The H(added) column lists the number of hydrogen atoms added and optimized by MolProbity. The Clashes column lists the number of clashes within the asymmetric unit, whereas Symm-Clashes lists symmetry related clashes.

Mol	Chain	Non-H	H(model)	H(added)	Clashes	Symm-Clashes
1	A	3259	0	3284	61	0
2	A	28	0	12	1	0
3	A	34	0	21	1	0
All	All	3321	0	3317	61	0

The all-atom clashscore is defined as the number of clashes found per 1000 atoms (including hydrogen atoms). The all-atom clashscore for this structure is 9.

All (61) close contacts within the same asymmetric unit are listed below, sorted by their clash magnitude.

Atom-1	Atom-2	Interatomic distance (Å)	Clash overlap (Å)
1:A:228:SER:CB	1:A:407:THR:HG21	1.91	1.00

*Continued on next page...*

*Continued from previous page...*

Atom-1	Atom-2	Interatomic distance (Å)	Clash overlap (Å)
1:A:228:SER:HB2	1:A:407:THR:HG21	1.45	0.95
1:A:84:ALA:HB1	1:A:85:PRO:HD3	1.52	0.92
1:A:84:ALA:HB1	1:A:85:PRO:CD	2.04	0.87
1:A:84:ALA:CB	1:A:85:PRO:CD	2.56	0.82
1:A:174:ARG:HG2	1:A:174:ARG:HH11	1.47	0.80
1:A:61:THR:HG23	1:A:63:HIS:NE2	2.01	0.75
1:A:431:HIS:ND1	1:A:432:GLU:N	2.37	0.72
1:A:328:LEU:HA	1:A:331:ILE:HG23	1.72	0.71
1:A:32:ILE:HG21	1:A:112:MET:HG3	1.73	0.69
1:A:233:THR:HG22	1:A:312:LEU:HB3	1.72	0.69
1:A:58:ALA:O	1:A:61:THR:HG22	1.93	0.69
1:A:344:LEU:HD11	1:A:372:ILE:HD12	1.75	0.67
1:A:228:SER:CB	1:A:407:THR:CG2	2.71	0.67
1:A:215:ASN:HA	1:A:218:ILE:HG12	1.77	0.65
1:A:228:SER:HB3	1:A:407:THR:HG21	1.75	0.65
1:A:228:SER:HB3	1:A:407:THR:CG2	2.27	0.65
1:A:38:LEU:HD13	1:A:55:ALA:HA	1.77	0.65
1:A:319:LEU:HB2	1:A:347:ALA:HB1	1.83	0.61
1:A:182:ALA:HA	1:A:185:GLU:HB2	1.82	0.61
1:A:317:LEU:HB2	1:A:322:GLU:OE2	2.02	0.60
1:A:84:ALA:CB	1:A:85:PRO:HD2	2.34	0.57
1:A:19:ALA:HB2	1:A:31:ARG:HG2	1.85	0.57
1:A:407:THR:HG22	1:A:408:SER:H	1.70	0.56
1:A:48:VAL:HG13	1:A:49:HIS:ND1	2.22	0.54
1:A:196:GLU:HB2	1:A:199:SER:HB2	1.91	0.52
1:A:76:GLU:O	3:A:475:FON:H7	2.09	0.52
1:A:55:ALA:O	1:A:83:ARG:NH2	2.40	0.52
1:A:206:GLN:O	1:A:210:LEU:HB2	2.10	0.51
1:A:84:ALA:HB3	1:A:85:PRO:HD2	1.93	0.51
1:A:58:ALA:O	1:A:61:THR:CG2	2.57	0.51
1:A:48:VAL:HG11	1:A:64:PHE:CD2	2.45	0.50
1:A:234:VAL:HG21	1:A:307:MET:HG2	1.95	0.48
1:A:374:ILE:HD12	1:A:382:ILE:HD13	1.97	0.46
1:A:174:ARG:CG	1:A:174:ARG:HH11	2.23	0.46
1:A:174:ARG:NH1	1:A:174:ARG:HG2	2.24	0.46
1:A:272:CYS:HB3	1:A:281:ARG:HA	1.97	0.46
1:A:429:ILE:HG21	1:A:438:ILE:HB	1.97	0.46
1:A:220:SER:OG	1:A:406:VAL:HG12	2.15	0.45
1:A:335:LYS:HD2	1:A:369:THR:HG22	1.97	0.45
1:A:410:ARG:HH12	1:A:452:ILE:HA	1.81	0.45
1:A:317:LEU:HD12	1:A:322:GLU:OE1	2.17	0.45

*Continued on next page...*



Continued from previous page...

Atom-1	Atom-2	Interatomic distance (Å)	Clash overlap (Å)
1:A:231:VAL:HG13	1:A:311:ASP:HB2	1.98	0.44
1:A:443:ARG:O	1:A:447:ASP:HB2	2.18	0.44
1:A:37:VAL:HG11	1:A:93:MET:HA	2.00	0.43
1:A:377:LEU:HB2	2:A:474:GDP:C6	2.53	0.43
1:A:177:LEU:HB3	1:A:446:LEU:HB2	2.02	0.42
1:A:14:PRO:HA	1:A:33:SER:O	2.18	0.42
1:A:170:LEU:CD1	1:A:452:ILE:HD11	2.49	0.42
1:A:458:ASN:HB2	1:A:461:VAL:HB	2.01	0.42
1:A:15:ILE:HG22	1:A:118:ARG:HG2	2.01	0.41
1:A:211:ARG:HG3	1:A:422:LEU:HB3	2.02	0.41
1:A:318:ASP:O	1:A:322:GLU:HG3	2.21	0.41
1:A:112:MET:HA	1:A:112:MET:CE	2.49	0.41
1:A:328:LEU:HB2	1:A:367:THR:CG2	2.50	0.41
1:A:75:ASP:OD2	1:A:98:CYS:HB2	2.21	0.41
1:A:18:ILE:HD13	1:A:105:VAL:HG22	2.04	0.40
1:A:385:LEU:O	1:A:389:MET:HG3	2.21	0.40
1:A:374:ILE:HD13	1:A:374:ILE:HA	1.96	0.40
1:A:170:LEU:HD13	1:A:452:ILE:HD11	2.04	0.40
1:A:386:LYS:HA	1:A:389:MET:HE2	2.04	0.40

There are no symmetry-related clashes.

## 5.3 Torsion angles [i](#)

### 5.3.1 Protein backbone [i](#)

In the following table, the Percentiles column shows the percent Ramachandran outliers of the chain as a percentile score with respect to all X-ray entries followed by that with respect to entries of similar resolution.

The Analysed column shows the number of residues for which the backbone conformation was analysed, and the total number of residues.

Mol	Chain	Analysed	Favoured	Allowed	Outliers	Percentiles
1	A	421/476 (88%)	389 (92%)	25 (6%)	7 (2%)	11 43

All (7) Ramachandran outliers are listed below:

Mol	Chain	Res	Type
1	A	84	ALA
1	A	70	GLY

Continued on next page...

*Continued from previous page...*

Mol	Chain	Res	Type
1	A	355	ASN
1	A	397	ASP
1	A	398	LYS
1	A	408	SER
1	A	431	HIS

### 5.3.2 Protein sidechains ⓘ

In the following table, the Percentiles column shows the percent sidechain outliers of the chain as a percentile score with respect to all X-ray entries followed by that with respect to entries of similar resolution.

The Analysed column shows the number of residues for which the sidechain conformation was analysed, and the total number of residues.

Mol	Chain	Analysed	Rotameric	Outliers	Percentiles
1	A	342/386 (89%)	299 (87%)	43 (13%)	5 22

All (43) residues with a non-rotameric sidechain are listed below:

Mol	Chain	Res	Type
1	A	18	ILE
1	A	31	ARG
1	A	38	LEU
1	A	40	LEU
1	A	54	LEU
1	A	71	GLU
1	A	91	GLU
1	A	94	VAL
1	A	97	THR
1	A	107	ARG
1	A	112	MET
1	A	118	ARG
1	A	131	LEU
1	A	150	ARG
1	A	151	THR
1	A	156	ARG
1	A	166	LEU
1	A	188	LEU
1	A	195	VAL
1	A	205	MET
1	A	210	LEU

*Continued on next page...*

*Continued from previous page...*

Mol	Chain	Res	Type
1	A	211	ARG
1	A	228	SER
1	A	246	LEU
1	A	247	LEU
1	A	306	LYS
1	A	317	LEU
1	A	331	ILE
1	A	344	LEU
1	A	352	ARG
1	A	359	LEU
1	A	394	LYS
1	A	398	LYS
1	A	399	LEU
1	A	401	GLU
1	A	407	THR
1	A	422	LEU
1	A	428	LEU
1	A	431	HIS
1	A	438	ILE
1	A	443	ARG
1	A	446	LEU
1	A	452	ILE

Some sidechains can be flipped to improve hydrogen bonding and reduce clashes. There are no such sidechains identified.

### 5.3.3 RNA ⓘ

There are no RNA molecules in this entry.

## 5.4 Non-standard residues in protein, DNA, RNA chains ⓘ

There are no non-standard protein/DNA/RNA residues in this entry.

## 5.5 Carbohydrates ⓘ

There are no carbohydrates in this entry.

## 5.6 Ligand geometry

2 ligands are modelled in this entry.

In the following table, the Counts columns list the number of bonds (or angles) for which Mogul statistics could be retrieved, the number of bonds (or angles) that are observed in the model and the number of bonds (or angles) that are defined in the chemical component dictionary. The Link column lists molecule types, if any, to which the group is linked. The Z score for a bond length (or angle) is the number of standard deviations the observed value is removed from the expected value. A bond length (or angle) with  $|Z| > 2$  is considered an outlier worth inspection. RMSZ is the root-mean-square of all Z scores of the bond lengths (or angles).

Mol	Type	Chain	Res	Link	Bond lengths			Bond angles		
					Counts	RMSZ	# $ Z  > 2$	Counts	RMSZ	# $ Z  > 2$
2	GDP	A	474	-	23,30,30	1.23	2 (8%)	30,47,47	1.82	7 (23%)
3	FON	A	475	-	27,36,36	1.24	2 (7%)	30,50,50	2.12	10 (33%)

In the following table, the Chirals column lists the number of chiral outliers, the number of chiral centers analysed, the number of these observed in the model and the number defined in the chemical component dictionary. Similar counts are reported in the Torsion and Rings columns. '-' means no outliers of that kind were identified.

Mol	Type	Chain	Res	Link	Chirals	Torsions	Rings
2	GDP	A	474	-	-	0/12/32/32	0/3/3/3
3	FON	A	475	-	-	0/18/37/37	0/2/3/3

All (4) bond length outliers are listed below:

Mol	Chain	Res	Type	Atoms	Z	Observed(Å)	Ideal(Å)
3	A	475	FON	CP1-N5	-4.71	1.26	1.36
2	A	474	GDP	C5-C4	3.21	1.47	1.40
3	A	475	FON	C4A-C8A	3.31	1.48	1.41
2	A	474	GDP	C6-C5	3.89	1.49	1.41

All (17) bond angle outliers are listed below:

Mol	Chain	Res	Type	Atoms	Z	Observed(°)	Ideal(°)
3	A	475	FON	C4A-N5-C6	-5.22	110.72	119.81
2	A	474	GDP	C5-C6-N1	-4.17	117.89	123.59
3	A	475	FON	C4A-C4-N3	-3.85	117.54	123.46
2	A	474	GDP	PA-O3A-PB	-3.61	120.55	132.67
2	A	474	GDP	C4-C5-N7	-3.20	106.54	109.48
2	A	474	GDP	N3-C2-N1	-3.12	122.69	127.44
2	A	474	GDP	C6-C5-C4	-2.91	117.42	120.90

*Continued on next page...*

*Continued from previous page...*

Mol	Chain	Res	Type	Atoms	Z	Observed(°)	Ideal(°)
3	A	475	FON	O3-CP1-N5	-2.39	120.62	124.21
2	A	474	GDP	C2'-C1'-N9	-2.26	110.84	114.29
3	A	475	FON	N3-C2-N1	-2.04	122.19	125.53
3	A	475	FON	C9-C6-N5	2.50	116.05	110.94
3	A	475	FON	C9-N10-C14	2.77	128.43	121.46
3	A	475	FON	C4-C4A-C8A	3.20	116.98	114.43
3	A	475	FON	C2-N1-C8A	3.48	122.35	114.54
3	A	475	FON	C4-C4A-N5	3.82	128.55	122.88
3	A	475	FON	C4-N3-C2	4.65	122.40	115.94
2	A	474	GDP	C6-N1-C2	4.70	122.46	115.94

There are no chirality outliers.

There are no torsion outliers.

There are no ring outliers.

2 monomers are involved in 2 short contacts:

Mol	Chain	Res	Type	Clashes	Symm-Clashes
2	A	474	GDP	1	0
3	A	475	FON	1	0

## 5.7 Other polymers [i](#)

There are no such residues in this entry.

## 5.8 Polymer linkage issues [i](#)

There are no chain breaks in this entry.

## 6 Fit of model and data ⓘ

### 6.1 Protein, DNA and RNA chains ⓘ

In the following table, the column labelled ‘#RSRZ> 2’ contains the number (and percentage) of RSRZ outliers, followed by percent RSRZ outliers for the chain as percentile scores relative to all X-ray entries and entries of similar resolution. The OWAB column contains the minimum, median, 95<sup>th</sup> percentile and maximum values of the occupancy-weighted average B-factor per residue. The column labelled ‘Q< 0.9’ lists the number of (and percentage) of residues with an average occupancy less than 0.9.

Mol	Chain	Analysed	<RSRZ>	#RSRZ>2	OWAB(Å <sup>2</sup> )	Q<0.9
1	A	427/476 (89%)	0.96	75 (17%) 2 1	80, 105, 121, 123	0

All (75) RSRZ outliers are listed below:

Mol	Chain	Res	Type	RSRZ
1	A	195	VAL	9.8
1	A	197	PHE	7.1
1	A	377	LEU	6.5
1	A	190	PHE	6.4
1	A	201	ASP	6.1
1	A	193	GLU	6.0
1	A	189	ASP	5.7
1	A	400	HIS	5.5
1	A	198	GLN	5.1
1	A	194	ASP	4.9
1	A	270	GLU	4.8
1	A	435	THR	4.4
1	A	346	VAL	4.1
1	A	427	GLU	4.1
1	A	434	GLU	4.0
1	A	429	ILE	4.0
1	A	192	GLU	4.0
1	A	433	SER	3.9
1	A	437	LEU	3.9
1	A	428	LEU	3.9
1	A	402	ALA	3.9
1	A	188	LEU	3.8
1	A	99	HIS	3.7
1	A	305	MET	3.6
1	A	196	GLU	3.6
1	A	199	SER	3.6
1	A	432	GLU	3.4

*Continued on next page...*

*Continued from previous page...*

Mol	Chain	Res	Type	RSRZ
1	A	399	LEU	3.4
1	A	191	SER	3.4
1	A	396	LEU	3.3
1	A	395	ASN	3.3
1	A	347	ALA	3.2
1	A	240	ASN	3.2
1	A	94	VAL	3.2
1	A	93	MET	3.2
1	A	401	GLU	3.1
1	A	98	CYS	3.1
1	A	354	ALA	3.0
1	A	277	LYS	3.0
1	A	436	GLU	2.9
1	A	324	LEU	2.9
1	A	33	SER	2.9
1	A	316	LEU	2.8
1	A	314	LEU	2.7
1	A	78	ILE	2.7
1	A	323	ARG	2.7
1	A	345	THR	2.7
1	A	97	THR	2.7
1	A	352	ARG	2.6
1	A	355	ASN	2.6
1	A	202	GLU	2.6
1	A	348	ASN	2.6
1	A	239	PRO	2.5
1	A	317	LEU	2.5
1	A	308	ALA	2.5
1	A	32	ILE	2.5
1	A	351	ASP	2.4
1	A	77	VAL	2.4
1	A	204	THR	2.4
1	A	75	ASP	2.4
1	A	186	LEU	2.4
1	A	86	ARG	2.4
1	A	315	TYR	2.3
1	A	248	ASN	2.3
1	A	284	ASP	2.3
1	A	420	ASP	2.3
1	A	353	ALA	2.3
1	A	451	GLN	2.3
1	A	126	THR	2.2

*Continued on next page...*

*Continued from previous page...*

Mol	Chain	Res	Type	RSRZ
1	A	185	GLU	2.2
1	A	208	GLU	2.2
1	A	65	GLY	2.1
1	A	71	GLU	2.1
1	A	76	GLU	2.1
1	A	34	GLY	2.0

## 6.2 Non-standard residues in protein, DNA, RNA chains [i](#)

There are no non-standard protein/DNA/RNA residues in this entry.

## 6.3 Carbohydrates [i](#)

There are no carbohydrates in this entry.

## 6.4 Ligands [i](#)

In the following table, the Atoms column lists the number of modelled atoms in the group and the number defined in the chemical component dictionary. LLDF column lists the quality of electron density of the group with respect to its neighbouring residues in protein, DNA or RNA chains. The B-factors column lists the minimum, median, 95<sup>th</sup> percentile and maximum values of B factors of atoms in the group. The column labelled 'Q< 0.9' lists the number of atoms with occupancy less than 0.9.

Mol	Type	Chain	Res	Atoms	RSCC	RSR	LLDF	B-factors( $\text{\AA}^2$ )	Q<0.9
3	FON	A	475	34/34	0.81	0.28	-0.66	98,105,107,108	0
2	GDP	A	474	28/28	0.88	0.16	-0.98	130,130,131,131	0

## 6.5 Other polymers [i](#)

There are no such residues in this entry.