



# Full wwPDB X-ray Structure Validation Report ⓘ

Feb 1, 2016 – 04:51 PM GMT

PDB ID : 4GE6  
Title : Crystal structure of human protein tyrosine phosphatase PTPN9 (MEG2) complex with compound 7  
Authors : Zhang, Z.-Y.; Liu, S.; Zhang, S.  
Deposited on : 2012-08-01  
Resolution : 1.40 Å(reported)

This is a Full wwPDB X-ray Structure Validation Report for a publicly released PDB entry.  
We welcome your comments at [validation@mail.wwpdb.org](mailto:validation@mail.wwpdb.org)  
A user guide is available at  
<http://wwpdb.org/validation/2016/XrayValidationReportHelp>  
with specific help available everywhere you see the ⓘ symbol.

---

The following versions of software and data (see [references ⓘ](#)) were used in the production of this report:

MolProbity : 4.02b-467  
Mogul : 1.7 (RC4), CSD as536be (2015)  
Xtriage (Phenix) : 1.9-1692  
EDS : rb-20026688  
Percentile statistics : 20151230.v01 (using entries in the PDB archive December 30th 2015)  
Refmac : 5.8.0135  
CCP4 : 6.5.0  
Ideal geometry (proteins) : Engh & Huber (2001)  
Ideal geometry (DNA, RNA) : Parkinson et al. (1996)  
Validation Pipeline (wwPDB-VP) : trunk26865

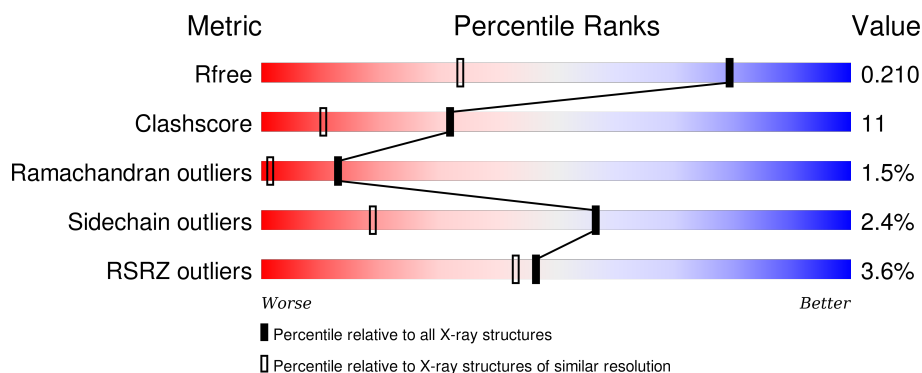
# 1 Overall quality at a glance

The following experimental techniques were used to determine the structure:

## *X-RAY DIFFRACTION*



The reported resolution of this entry is 1.40 Å.

Percentile scores (ranging between 0-100) for global validation metrics of the entry are shown in the following graphic. The table shows the number of entries on which the scores are based.



Metric	Whole archive (#Entries)	Similar resolution (#Entries, resolution range(Å))
$R_{free}$	91344	1199 (1.40-1.40)
Clashscore	102246	1295 (1.40-1.40)
Ramachandran outliers	100387	1259 (1.40-1.40)
Sidechain outliers	100360	1258 (1.40-1.40)
RSRZ outliers	91569	1198 (1.40-1.40)

The table below summarises the geometric issues observed across the polymeric chains and their fit to the electron density. The red, orange, yellow and green segments on the lower bar indicate the fraction of residues that contain outliers for  $\geq 3$ , 2, 1 and 0 types of geometric quality criteria. A grey segment represents the fraction of residues that are not modelled. The numeric value for each fraction is indicated below the corresponding segment, with a dot representing fractions  $\leq 5\%$ . The upper red bar (where present) indicates the fraction of residues that have poor fit to the electron density. The numeric value is given above the bar.

Mol	Chain	Length	Quality of chain
1	A	314	 4% 80% 15% ..
1	B	314	 4% 76% 18% . .

## 2 Entry composition

There are 3 unique types of molecules in this entry. The entry contains 5166 atoms, of which 0 are hydrogens and 0 are deuteriums.

In the tables below, the ZeroOcc column contains the number of atoms modelled with zero occupancy, the AltConf column contains the number of residues with at least one atom in alternate conformation and the Trace column contains the number of residues modelled with at most 2 atoms.

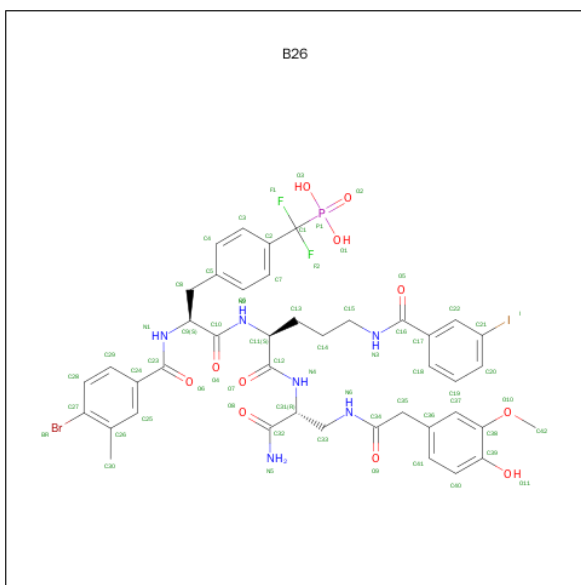
- Molecule 1 is a protein called Tyrosine-protein phosphatase non-receptor type 9.

Mol	Chain	Residues	Atoms					ZeroOcc	AltConf	Trace
1	A	303	Total	C	N	O	S	0	0	0
			2446	1541	433	455	17			
1	B	304	Total	C	N	O	S	0	0	0
			2456	1547	436	456	17			

There are 16 discrepancies between the modelled and reference sequences:

Chain	Residue	Modelled	Actual	Comment	Reference
A	276	MET	-	INITIATING METHIONINE	UNP P43378
A	583	ALA	-	EXPRESSION TAG	UNP P43378
A	584	HIS	-	EXPRESSION TAG	UNP P43378
A	585	HIS	-	EXPRESSION TAG	UNP P43378
A	586	HIS	-	EXPRESSION TAG	UNP P43378
A	587	HIS	-	EXPRESSION TAG	UNP P43378
A	588	HIS	-	EXPRESSION TAG	UNP P43378
A	589	HIS	-	EXPRESSION TAG	UNP P43378
B	276	MET	-	INITIATING METHIONINE	UNP P43378
B	583	ALA	-	EXPRESSION TAG	UNP P43378
B	584	HIS	-	EXPRESSION TAG	UNP P43378
B	585	HIS	-	EXPRESSION TAG	UNP P43378
B	586	HIS	-	EXPRESSION TAG	UNP P43378
B	587	HIS	-	EXPRESSION TAG	UNP P43378
B	588	HIS	-	EXPRESSION TAG	UNP P43378
B	589	HIS	-	EXPRESSION TAG	UNP P43378

- Molecule 2 is N-(4-BROMO-3-METHYLBENZOYL)-4-[DIFLUORO(PHOSPHONO)METHYL]-L-PHENYLALANYL-N 5 -(3-IODOBENZOYL)-L-ORNITHYL-3-[(4-HYDROXY-3-METHOXYPHENYL)ACETYL]AMINO}-D-ALANINAMIDE (three-letter code: B26) (formula: C<sub>42</sub>H<sub>45</sub>BrF<sub>2</sub>IN<sub>6</sub>O<sub>11</sub>P).



Mol	Chain	Residues	Atoms								ZeroOcc	AltConf
2	A	1	Total	Br	C	F	I	N	O	P	0	0
			64	1	42	2	1	6	11	1		

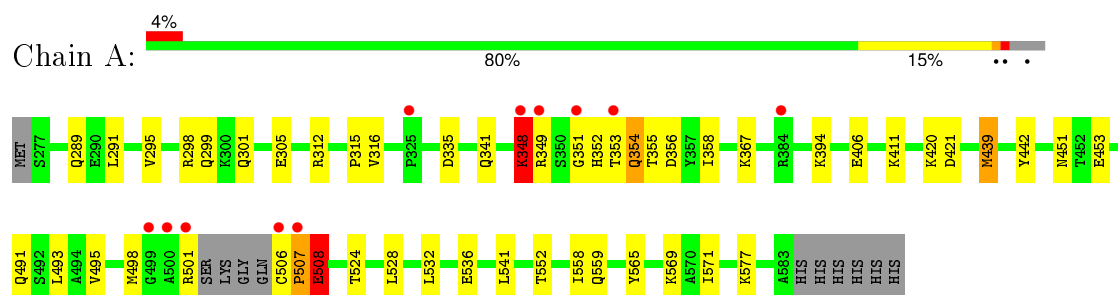
- Molecule 3 is water.

Mol	Chain	Residues	Atoms	ZeroOcc	AltConf
3	A	110	Total O 110 110	0	0
3	B	90	Total O 90 90	0	0

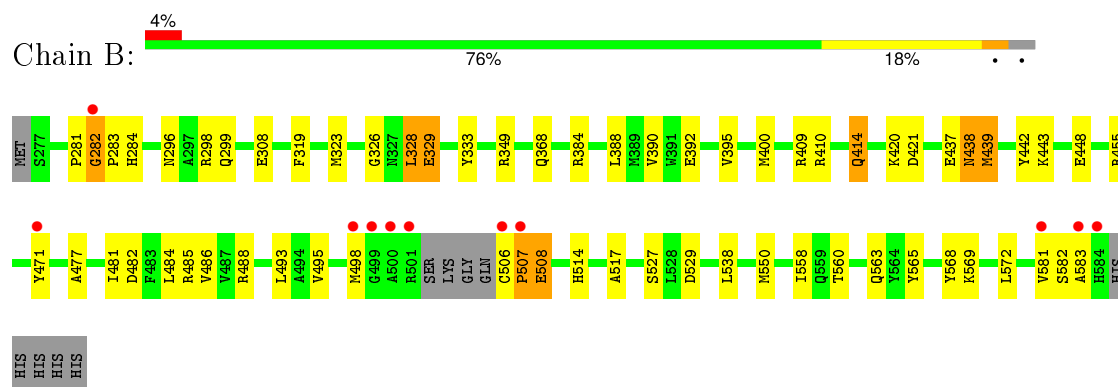
### 3 Residue-property plots [i](#)

These plots are drawn for all protein, RNA and DNA chains in the entry. The first graphic for a chain summarises the proportions of errors displayed in the second graphic. The second graphic shows the sequence view annotated by issues in geometry and electron density. Residues are color-coded according to the number of geometric quality criteria for which they contain at least one outlier: green = 0, yellow = 1, orange = 2 and red = 3 or more. A red dot above a residue indicates a poor fit to the electron density ( $\text{RSRZ} > 2$ ). Stretches of 2 or more consecutive residues without any outlier are shown as a green connector. Residues present in the sample, but not in the model, are shown in grey.

- Molecule 1: Tyrosine-protein phosphatase non-receptor type 9



- Molecule 1: Tyrosine-protein phosphatase non-receptor type 9



## 4 Data and refinement statistics

Property	Value	Source
Space group	P 1	Depositor
Cell constants a, b, c, $\alpha$ , $\beta$ , $\gamma$	40.14Å 57.77Å 66.70Å 77.22° 78.03° 80.01°	Depositor
Resolution (Å)	50.00 – 1.40 34.14 – 1.24	Depositor EDS
% Data completeness (in resolution range)	90.1 (50.00-1.40) 76.4 (34.14-1.24)	Depositor EDS
$R_{merge}$	0.10	Depositor
$R_{sym}$	(Not available)	Depositor
$\langle I/\sigma(I) \rangle$ <sup>1</sup>	2.33 (at 1.24Å)	Xtriage
Refinement program	CNS 1.1	Depositor
R, $R_{free}$	0.198 , 0.215 0.194 , 0.210	Depositor DCC
$R_{free}$ test set	4453 reflections (4.45%)	DCC
Wilson B-factor (Å <sup>2</sup> )	12.9	Xtriage
Anisotropy	0.193	Xtriage
Bulk solvent $k_{sol}$ (e/Å <sup>3</sup> ), $B_{sol}$ (Å <sup>2</sup> )	0.31 , 41.9	EDS
Estimated twinning fraction	No twinning to report.	Xtriage
L-test for twinning <sup>2</sup>	$\langle  L  \rangle = 0.44$ , $\langle L^2 \rangle = 0.27$	Xtriage
Outliers	0 of 134008 reflections	Xtriage
$F_o, F_c$ correlation	0.96	EDS
Total number of atoms	5166	wwPDB-VP
Average B, all atoms (Å <sup>2</sup> )	22.0	wwPDB-VP

Xtriage's analysis on translational NCS is as follows: *The largest off-origin peak in the Patterson function is 7.14% of the height of the origin peak. No significant pseudotranslation is detected.*

<sup>1</sup>Intensities estimated from amplitudes.

<sup>2</sup>Theoretical values of  $\langle |L| \rangle$ ,  $\langle L^2 \rangle$  for acentric reflections are 0.5, 0.375 respectively for untwinned datasets, and 0.333, 0.2 for perfectly twinned datasets.

## 5 Model quality

### 5.1 Standard geometry

Bond lengths and bond angles in the following residue types are not validated in this section: B26

The Z score for a bond length (or angle) is the number of standard deviations the observed value is removed from the expected value. A bond length (or angle) with  $|Z| > 5$  is considered an outlier worth inspection. RMSZ is the root-mean-square of all Z scores of the bond lengths (or angles).

Mol	Chain	Bond lengths		Bond angles	
		RMSZ	$\# Z  > 5$	RMSZ	$\# Z  > 5$
1	A	0.30	0/2501	0.58	1/3381 (0.0%)
1	B	0.30	0/2512	0.57	0/3396
All	All	0.30	0/5013	0.57	1/6777 (0.0%)

There are no bond length outliers.

All (1) bond angle outliers are listed below:

Mol	Chain	Res	Type	Atoms	Z	Observed(°)	Ideal(°)
1	A	508	GLU	N-CA-C	-5.19	96.98	111.00

There are no chirality outliers.

There are no planarity outliers.

### 5.2 Too-close contacts

In the following table, the Non-H and H(model) columns list the number of non-hydrogen atoms and hydrogen atoms in the chain respectively. The H(added) column lists the number of hydrogen atoms added and optimized by MolProbity. The Clashes column lists the number of clashes within the asymmetric unit, whereas Symm-Clashes lists symmetry related clashes.

Mol	Chain	Non-H	H(model)	H(added)	Clashes	Symm-Clashes
1	A	2446	0	2389	58	0
1	B	2456	0	2396	50	0
2	A	64	0	42	8	0
3	A	110	0	0	2	0
3	B	90	0	0	2	0
All	All	5166	0	4827	104	0

The all-atom clashscore is defined as the number of clashes found per 1000 atoms (including

hydrogen atoms). The all-atom clashscore for this structure is 11.

All (104) close contacts within the same asymmetric unit are listed below, sorted by their clash magnitude.

Atom-1	Atom-2	Interatomic distance (Å)	Clash overlap (Å)
1:B:581:VAL:HG12	1:B:582:SER:H	1.21	1.05
1:A:577:LYS:HE3	1:B:409:ARG:HH22	1.46	0.81
1:B:414:GLN:NE2	1:B:414:GLN:H	1.81	0.79
1:A:524:THR:O	1:A:528:LEU:HD13	1.83	0.78
1:B:581:VAL:HG12	1:B:582:SER:N	1.98	0.78
1:A:541:LEU:HD11	1:A:571:ILE:HG21	1.67	0.77
1:A:559:GLN:NE2	2:A:601:B26:H15	1.98	0.77
1:B:581:VAL:CG1	1:B:582:SER:H	2.03	0.70
1:B:328:LEU:HD22	1:B:329:GLU:N	2.07	0.70
1:B:414:GLN:HE21	1:B:414:GLN:H	1.41	0.69
1:A:506:CYS:C	1:A:508:GLU:H	1.95	0.68
1:A:301:GLN:O	1:A:305:GLU:HG3	1.94	0.68
1:B:439:MET:HG2	1:B:442:TYR:CZ	2.30	0.67
1:A:312:ARG:NE	1:A:312:ARG:HA	2.12	0.64
1:A:559:GLN:NE2	2:A:601:B26:H19	2.11	0.64
1:B:568:TYR:O	1:B:572:LEU:HD23	1.98	0.64
1:A:577:LYS:CE	1:B:409:ARG:HH22	2.10	0.64
1:A:358:ILE:HD12	3:A:702:HOH:O	1.97	0.63
1:B:400:MET:HG3	1:B:514:HIS:CE1	2.34	0.63
1:A:559:GLN:HG3	2:A:601:B26:H8	1.81	0.62
1:A:559:GLN:HE22	2:A:601:B26:H19	1.65	0.61
1:A:316:VAL:HG11	1:A:552:THR:HG22	1.82	0.61
1:B:414:GLN:N	1:B:414:GLN:NE2	2.49	0.59
1:A:501:ARG:HG2	1:A:501:ARG:HH11	1.67	0.59
1:B:560:THR:OG1	1:B:563:GLN:HG3	2.03	0.58
1:A:495:VAL:O	1:A:498:MET:HG2	2.02	0.58
1:B:326:GLY:H	1:B:328:LEU:HD12	1.69	0.57
1:A:316:VAL:O	1:A:316:VAL:HG13	2.03	0.57
1:B:506:CYS:HB3	1:B:507:PRO:HD2	1.86	0.57
1:B:420:LYS:O	1:B:421:ASP:HB2	2.05	0.57
1:B:493:LEU:HD23	1:B:493:LEU:C	2.26	0.56
1:A:506:CYS:C	1:A:508:GLU:N	2.61	0.55
1:B:384:ARG:HH21	1:B:384:ARG:HG3	1.73	0.54
1:B:296:ASN:HA	1:B:299:GLN:NE2	2.23	0.54
1:B:488:ARG:HD2	1:B:529:ASP:OD1	2.08	0.53
1:A:367:LYS:NZ	1:A:367:LYS:HB3	2.22	0.53
1:B:443:LYS:HB3	1:B:443:LYS:NZ	2.24	0.53
1:A:352:HIS:HB2	1:A:354:GLN:OE1	2.09	0.52

*Continued on next page...*



*Continued from previous page...*

Atom-1	Atom-2	Interatomic distance (Å)	Clash overlap (Å)
1:A:348:LYS:HD2	1:A:349:ARG:N	2.25	0.52
1:A:501:ARG:HG2	1:A:501:ARG:NH1	2.25	0.51
1:A:335:ASP:OD2	2:A:601:B26:H17	2.11	0.51
1:B:283:PRO:O	1:B:284:HIS:HB2	2.11	0.51
1:A:348:LYS:NZ	1:A:356:ASP:HB3	2.25	0.50
1:A:559:GLN:HE21	2:A:601:B26:H15	1.74	0.50
1:B:506:CYS:HB3	1:B:507:PRO:CD	2.41	0.50
1:A:559:GLN:HE22	2:A:601:B26:H15	1.72	0.50
1:B:319:PHE:HB2	1:B:323:MET:CE	2.42	0.50
1:A:439:MET:HG2	1:A:442:TYR:CZ	2.47	0.50
1:B:477:ALA:O	1:B:481:ILE:HG12	2.12	0.49
1:B:298:ARG:HG3	1:B:298:ARG:HH21	1.77	0.49
1:A:506:CYS:O	1:A:508:GLU:N	2.46	0.49
1:A:289:GLN:HG2	3:A:790:HOH:O	2.11	0.49
1:A:394:LYS:HD3	1:A:501:ARG:CD	2.42	0.49
1:B:333:TYR:CD2	1:B:517:ALA:HB2	2.47	0.49
1:B:328:LEU:C	1:B:328:LEU:HD22	2.33	0.48
1:A:532:LEU:O	1:A:536:GLU:HG3	2.13	0.48
1:A:291:LEU:O	1:A:291:LEU:HD23	2.13	0.48
1:B:390:VAL:HG13	1:B:395:VAL:HB	1.94	0.48
1:B:495:VAL:O	1:B:498:MET:HB3	2.12	0.48
1:A:406:GLU:HB2	1:A:411:LYS:HE2	1.96	0.48
1:B:438:ASN:HD22	1:B:438:ASN:C	2.16	0.48
1:B:308:GLU:HG2	3:B:679:HOH:O	2.13	0.47
1:B:368:GLN:NE2	1:B:508:GLU:HG2	2.29	0.47
1:A:577:LYS:HE3	1:B:409:ARG:NH2	2.24	0.47
1:A:565:TYR:CZ	1:A:569:LYS:HD3	2.50	0.46
1:A:491:GLN:O	1:A:495:VAL:HG23	2.16	0.46
1:A:298:ARG:HH21	1:A:298:ARG:HG3	1.79	0.46
1:A:351:GLY:O	1:A:353:THR:HG23	2.15	0.46
1:A:316:VAL:CG1	1:A:552:THR:HG22	2.46	0.46
1:A:298:ARG:O	1:A:299:GLN:HB2	2.17	0.45
1:B:410:ARG:HD2	3:B:603:HOH:O	2.17	0.45
1:A:315:PRO:HG2	2:A:601:B26:I	2.87	0.44
1:A:291:LEU:HD23	1:A:295:VAL:HG23	1.99	0.44
1:A:420:LYS:O	1:A:421:ASP:HB2	2.17	0.44
1:B:565:TYR:CZ	1:B:569:LYS:HE2	2.53	0.44
1:B:482:ASP:O	1:B:486:VAL:HG23	2.17	0.44
1:A:577:LYS:NZ	1:B:409:ARG:HH22	2.16	0.44
1:B:527:SER:N	1:B:550:MET:HE1	2.33	0.43
1:B:484:LEU:HD23	1:B:484:LEU:C	2.38	0.43

*Continued on next page...*

Continued from previous page...

Atom-1	Atom-2	Interatomic distance (Å)	Clash overlap (Å)
1:A:316:VAL:HG11	1:A:552:THR:CG2	2.47	0.43
1:B:388:LEU:O	1:B:392:GLU:HG3	2.18	0.43
1:B:328:LEU:HD13	1:B:329:GLU:H	1.83	0.43
1:B:420:LYS:O	1:B:421:ASP:CB	2.67	0.43
1:B:455:ARG:HH11	1:B:455:ARG:HG3	1.82	0.43
1:A:348:LYS:CD	1:A:349:ARG:N	2.82	0.42
1:B:319:PHE:HB2	1:B:323:MET:HE1	2.01	0.42
1:B:506:CYS:O	1:B:508:GLU:N	2.52	0.42
1:A:348:LYS:C	1:A:348:LYS:HD2	2.40	0.42
1:A:352:HIS:HD1	1:A:352:HIS:H	1.68	0.42
1:A:352:HIS:CB	1:A:354:GLN:HE22	2.32	0.42
1:A:406:GLU:HB2	1:A:411:LYS:CE	2.51	0.41
1:B:281:PRO:O	1:B:282:GLY:O	2.38	0.41
1:A:493:LEU:HD23	1:A:493:LEU:C	2.40	0.41
1:A:348:LYS:HG2	1:A:355:THR:O	2.20	0.41
1:B:298:ARG:NH2	1:B:298:ARG:HG3	2.35	0.41
1:A:354:GLN:HE21	1:A:354:GLN:HB3	1.58	0.41
1:A:352:HIS:O	1:A:353:THR:OG1	2.35	0.41
1:A:451:ASN:OD1	1:A:453:GLU:HB3	2.21	0.41
1:B:349:ARG:HH11	1:B:349:ARG:HG3	1.85	0.41
1:B:437:GLU:HG3	1:B:439:MET:CE	2.51	0.40
1:A:507:PRO:O	1:A:508:GLU:HB2	2.20	0.40
1:A:341:GLN:H	1:A:341:GLN:CD	2.24	0.40
1:A:298:ARG:NH2	1:A:298:ARG:HG3	2.35	0.40
1:A:348:LYS:HZ2	1:A:356:ASP:HB3	1.86	0.40

There are no symmetry-related clashes.

## 5.3 Torsion angles ⓘ

### 5.3.1 Protein backbone ⓘ

In the following table, the Percentiles column shows the percent Ramachandran outliers of the chain as a percentile score with respect to all X-ray entries followed by that with respect to entries of similar resolution.

The Analysed column shows the number of residues for which the backbone conformation was analysed, and the total number of residues.

Mol	Chain	Analysed	Favoured	Allowed	Outliers	Percentiles
1	A	299/314 (95%)	287 (96%)	8 (3%)	4 (1%)	15 2

Continued on next page...

*Continued from previous page...*

Mol	Chain	Analysed	Favoured	Allowed	Outliers	Percentiles	
1	B	300/314 (96%)	284 (95%)	11 (4%)	5 (2%)	11	1
All	All	599/628 (95%)	571 (95%)	19 (3%)	9 (2%)	13	1

All (9) Ramachandran outliers are listed below:

Mol	Chain	Res	Type
1	A	348	LYS
1	A	508	GLU
1	B	282	GLY
1	B	583	ALA
1	B	507	PRO
1	A	558	ILE
1	B	558	ILE
1	B	508	GLU
1	A	507	PRO

### 5.3.2 Protein sidechains ⓘ

In the following table, the Percentiles column shows the percent sidechain outliers of the chain as a percentile score with respect to all X-ray entries followed by that with respect to entries of similar resolution.

The Analysed column shows the number of residues for which the sidechain conformation was analysed, and the total number of residues.

Mol	Chain	Analysed	Rotameric	Outliers	Percentiles	
1	A	268/278 (96%)	264 (98%)	4 (2%)	72	41
1	B	269/278 (97%)	260 (97%)	9 (3%)	45	10
All	All	537/556 (97%)	524 (98%)	13 (2%)	57	19

All (13) residues with a non-rotameric sidechain are listed below:

Mol	Chain	Res	Type
1	A	348	LYS
1	A	354	GLN
1	A	439	MET
1	A	508	GLU
1	B	328	LEU
1	B	329	GLU
1	B	414	GLN

*Continued on next page...*

*Continued from previous page...*

Mol	Chain	Res	Type
1	B	438	ASN
1	B	439	MET
1	B	448	GLU
1	B	471	TYR
1	B	485	ARG
1	B	538	LEU

Some sidechains can be flipped to improve hydrogen bonding and reduce clashes. All (10) such sidechains are listed below:

Mol	Chain	Res	Type
1	A	354	GLN
1	A	414	GLN
1	A	456	GLN
1	A	489	ASN
1	A	559	GLN
1	B	299	GLN
1	B	368	GLN
1	B	414	GLN
1	B	438	ASN
1	B	450	HIS

### 5.3.3 RNA [i](#)

There are no RNA molecules in this entry.

## 5.4 Non-standard residues in protein, DNA, RNA chains [i](#)

There are no non-standard protein/DNA/RNA residues in this entry.

## 5.5 Carbohydrates [i](#)

There are no carbohydrates in this entry.

## 5.6 Ligand geometry [i](#)

1 ligand is modelled in this entry.

In the following table, the Counts columns list the number of bonds (or angles) for which Mogul statistics could be retrieved, the number of bonds (or angles) that are observed in the model and

the number of bonds (or angles) that are defined in the chemical component dictionary. The Link column lists molecule types, if any, to which the group is linked. The Z score for a bond length (or angle) is the number of standard deviations the observed value is removed from the expected value. A bond length (or angle) with  $|Z| > 2$  is considered an outlier worth inspection. RMSZ is the root-mean-square of all Z scores of the bond lengths (or angles).

Mol	Type	Chain	Res	Link	Bond lengths			Bond angles		
					Counts	RMSZ	# Z  > 2	Counts	RMSZ	# Z  > 2
2	B26	A	601	-	62,67,67	1.62	8 (12%)	85,95,95	1.59	11 (12%)

In the following table, the Chirals column lists the number of chiral outliers, the number of chiral centers analysed, the number of these observed in the model and the number defined in the chemical component dictionary. Similar counts are reported in the Torsion and Rings columns. '-' means no outliers of that kind were identified.

Mol	Type	Chain	Res	Link	Chirals	Torsions	Rings
2	B26	A	601	-	-	0/60/69/69	0/4/4/4

All (8) bond length outliers are listed below:

Mol	Chain	Res	Type	Atoms	Z	Observed(Å)	Ideal(Å)
2	A	601	B26	C24-C23	-6.61	1.36	1.50
2	A	601	B26	C17-C16	-5.82	1.37	1.50
2	A	601	B26	C16-N3	2.07	1.38	1.33
2	A	601	B26	C32-N5	2.20	1.37	1.32
2	A	601	B26	C34-N6	2.26	1.38	1.33
2	A	601	B26	C21-I	2.70	2.17	2.10
2	A	601	B26	P1-O1	3.23	1.60	1.54
2	A	601	B26	P1-O3	4.01	1.62	1.54

All (11) bond angle outliers are listed below:

Mol	Chain	Res	Type	Atoms	Z	Observed(°)	Ideal(°)
2	A	601	B26	O6-C23-N1	-4.39	114.51	122.44
2	A	601	B26	O5-C16-N3	-3.61	115.01	122.58
2	A	601	B26	C8-C9-N1	-2.10	106.41	110.80
2	A	601	B26	C29-C24-C25	-2.06	116.75	119.24
2	A	601	B26	C12-C11-N2	2.20	117.47	111.26
2	A	601	B26	C15-N3-C16	2.68	128.16	122.15
2	A	601	B26	C17-C22-C21	2.92	121.50	119.33
2	A	601	B26	C17-C16-N3	3.60	125.21	117.12
2	A	601	B26	C9-N1-C23	4.30	133.37	121.62
2	A	601	B26	O10-C38-C39	4.91	121.04	114.57
2	A	601	B26	C24-C23-N1	5.24	126.26	116.93

There are no chirality outliers.

There are no torsion outliers.

There are no ring outliers.

1 monomer is involved in 8 short contacts:

Mol	Chain	Res	Type	Clashes	Symm-Clashes
2	A	601	B26	8	0

## 5.7 Other polymers [i](#)

There are no such residues in this entry.

## 5.8 Polymer linkage issues [i](#)

There are no chain breaks in this entry.

## 6 Fit of model and data ⓘ

### 6.1 Protein, DNA and RNA chains ⓘ

In the following table, the column labelled ‘#RSRZ> 2’ contains the number (and percentage) of RSRZ outliers, followed by percent RSRZ outliers for the chain as percentile scores relative to all X-ray entries and entries of similar resolution. The OWAB column contains the minimum, median, 95<sup>th</sup> percentile and maximum values of the occupancy-weighted average B-factor per residue. The column labelled ‘Q< 0.9’ lists the number of (and percentage) of residues with an average occupancy less than 0.9.

Mol	Chain	Analysed	<RSRZ>	#RSRZ>2	OWAB(Å <sup>2</sup> )	Q<0.9
1	A	303/314 (96%)	0.05	11 (3%) 46 43	13, 20, 33, 38	0
1	B	304/314 (96%)	0.04	11 (3%) 46 43	14, 21, 31, 43	0
All	All	607/628 (96%)	0.05	22 (3%) 46 43	13, 21, 33, 43	0

All (22) RSRZ outliers are listed below:

Mol	Chain	Res	Type	RSRZ
1	B	506	CYS	12.0
1	B	499	GLY	7.5
1	B	501	ARG	6.5
1	B	500	ALA	6.4
1	B	583	ALA	6.1
1	A	506	CYS	5.6
1	A	501	ARG	5.4
1	B	584	HIS	4.8
1	A	351	GLY	4.6
1	B	507	PRO	4.4
1	A	500	ALA	4.3
1	A	353	THR	3.4
1	A	349	ARG	3.3
1	A	325	PRO	2.9
1	B	498	MET	2.8
1	B	282	GLY	2.8
1	A	507	PRO	2.8
1	A	499	GLY	2.7
1	B	581	VAL	2.5
1	B	471	TYR	2.5
1	A	348	LYS	2.1
1	A	384	ARG	2.0

## 6.2 Non-standard residues in protein, DNA, RNA chains [i](#)

There are no non-standard protein/DNA/RNA residues in this entry.

## 6.3 Carbohydrates [i](#)

There are no carbohydrates in this entry.

## 6.4 Ligands [i](#)

In the following table, the Atoms column lists the number of modelled atoms in the group and the number defined in the chemical component dictionary. LLDF column lists the quality of electron density of the group with respect to its neighbouring residues in protein, DNA or RNA chains. The B-factors column lists the minimum, median, 95<sup>th</sup> percentile and maximum values of B factors of atoms in the group. The column labelled 'Q< 0.9' lists the number of atoms with occupancy less than 0.9.

Mol	Type	Chain	Res	Atoms	RSCC	RSR	LLDF	B-factors( $\text{\AA}^2$ )	Q<0.9
2	B26	A	601	64/64	0.98	0.11	-0.17	19,24,32,36	0

## 6.5 Other polymers [i](#)

There are no such residues in this entry.