



# Full wwPDB X-ray Structure Validation Report ⓘ

Feb 1, 2016 – 08:53 AM GMT

PDB ID : 3GG4  
Title : The crystal structure of glycerol kinase from Yersinia pseudotuberculosis  
Authors : Zhang, Z.; Swaminathan, S.; Burley, S.K.; New York SGX Research Center  
for Structural Genomics (NYSGXRC)  
Deposited on : 2009-02-27  
Resolution : 2.00 Å(reported)

This is a Full wwPDB X-ray Structure Validation Report for a publicly released PDB entry.  
We welcome your comments at [validation@mail.wwpdb.org](mailto:validation@mail.wwpdb.org)  
A user guide is available at  
<http://wwpdb.org/validation/2016/XrayValidationReportHelp>  
with specific help available everywhere you see the ⓘ symbol.

---

The following versions of software and data (see [references ⓘ](#)) were used in the production of this report:

MolProbity : 4.02b-467  
Mogul : 1.7 (RC4), CSD as536be (2015)  
Xtriage (Phenix) : 1.9-1692  
EDS : rb-20026688  
Percentile statistics : 20151230.v01 (using entries in the PDB archive December 30th 2015)  
Refmac : 5.8.0135  
CCP4 : 6.5.0  
Ideal geometry (proteins) : Engh & Huber (2001)  
Ideal geometry (DNA, RNA) : Parkinson et al. (1996)  
Validation Pipeline (wwPDB-VP) : trunk26865

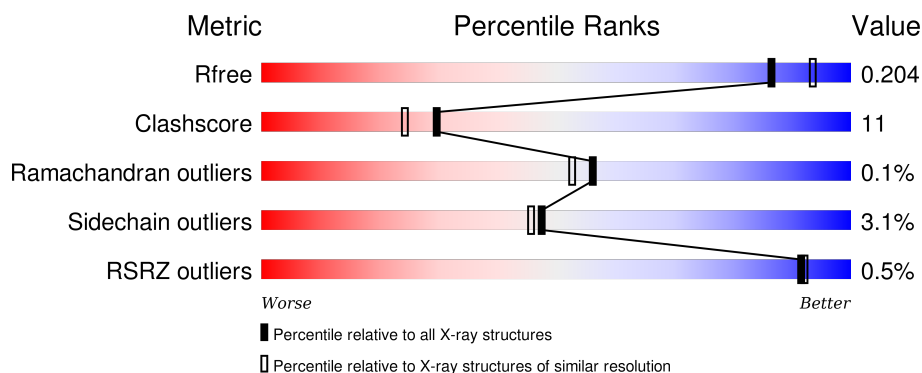
# 1 Overall quality at a glance

The following experimental techniques were used to determine the structure:

## *X-RAY DIFFRACTION*

The reported resolution of this entry is 2.00 Å.

Percentile scores (ranging between 0-100) for global validation metrics of the entry are shown in the following graphic. The table shows the number of entries on which the scores are based.



Metric	Whole archive (#Entries)	Similar resolution (#Entries, resolution range(Å))
$R_{free}$	91344	6249 (2.00-2.00)
Clashscore	102246	7340 (2.00-2.00)
Ramachandran outliers	100387	7248 (2.00-2.00)
Sidechain outliers	100360	7247 (2.00-2.00)
RSRZ outliers	91569	6262 (2.00-2.00)

The table below summarises the geometric issues observed across the polymeric chains and their fit to the electron density. The red, orange, yellow and green segments on the lower bar indicate the fraction of residues that contain outliers for  $\geq 3$ , 2, 1 and 0 types of geometric quality criteria. A grey segment represents the fraction of residues that are not modelled. The numeric value for each fraction is indicated below the corresponding segment, with a dot representing fractions  $\leq 5\%$ . The upper red bar (where present) indicates the fraction of residues that have poor fit to the electron density. The numeric value is given above the bar.

Mol	Chain	Length	Quality of chain
1	A	554	<div> <div></div> <div>75%</div> <div>19%</div> <div>• •</div> </div>
1	B	554	<div> <div>81%</div> <div>15%</div> <div>• •</div> </div>

The following table lists non-polymeric compounds, carbohydrate monomers and non-standard residues in protein, DNA, RNA chains that are outliers for geometric or electron-density-fit criteria:

Mol	Type	Chain	Res	Chirality	Geometry	Clashes	Electron density
2	BTB	B	600	-	-	-	X

## 2 Entry composition

There are 3 unique types of molecules in this entry. The entry contains 9004 atoms, of which 0 are hydrogens and 0 are deuteriums.

In the tables below, the ZeroOcc column contains the number of atoms modelled with zero occupancy, the AltConf column contains the number of residues with at least one atom in alternate conformation and the Trace column contains the number of residues modelled with at most 2 atoms.

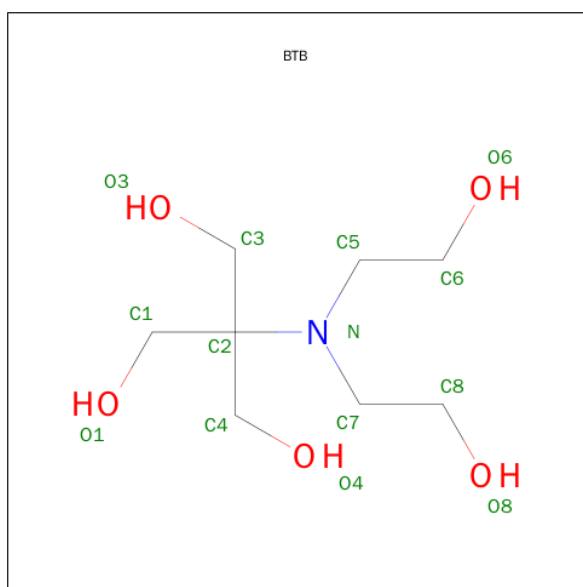
- Molecule 1 is a protein called glycerol kinase.

Mol	Chain	Residues	Atoms						ZeroOcc	AltConf	Trace
1	A	537	Total	C	N	O	S	Se	0	0	0
			4095	2584	718	763	6	24			
1	B	533	Total	C	N	O	S	Se	0	0	0
			4086	2580	715	761	6	24			

There are 22 discrepancies between the modelled and reference sequences:

Chain	Residue	Modelled	Actual	Comment	Reference
A	-1	MSE	-	expression tag	UNP Q665C6
A	0	SER	-	expression tag	UNP Q665C6
A	1	LEU	-	expression tag	UNP Q665C6
A	545	GLU	-	expression tag	UNP Q665C6
A	546	GLY	-	expression tag	UNP Q665C6
A	547	HIS	-	expression tag	UNP Q665C6
A	548	HIS	-	expression tag	UNP Q665C6
A	549	HIS	-	expression tag	UNP Q665C6
A	550	HIS	-	expression tag	UNP Q665C6
A	551	HIS	-	expression tag	UNP Q665C6
A	552	HIS	-	expression tag	UNP Q665C6
B	-1	MSE	-	expression tag	UNP Q665C6
B	0	SER	-	expression tag	UNP Q665C6
B	1	LEU	-	expression tag	UNP Q665C6
B	545	GLU	-	expression tag	UNP Q665C6
B	546	GLY	-	expression tag	UNP Q665C6
B	547	HIS	-	expression tag	UNP Q665C6
B	548	HIS	-	expression tag	UNP Q665C6
B	549	HIS	-	expression tag	UNP Q665C6
B	550	HIS	-	expression tag	UNP Q665C6
B	551	HIS	-	expression tag	UNP Q665C6
B	552	HIS	-	expression tag	UNP Q665C6

- Molecule 2 is 2-[BIS-(2-HYDROXY-ETHYL)-AMINO]-2-HYDROXYMETHYL-PROPAN E-1,3-DIOL (three-letter code: BTB) (formula: C<sub>8</sub>H<sub>19</sub>NO<sub>5</sub>).



Mol	Chain	Residues	Atoms				ZeroOcc	AltConf
2	B	1	Total	C	N	O	0	0
			14	8	1	5		

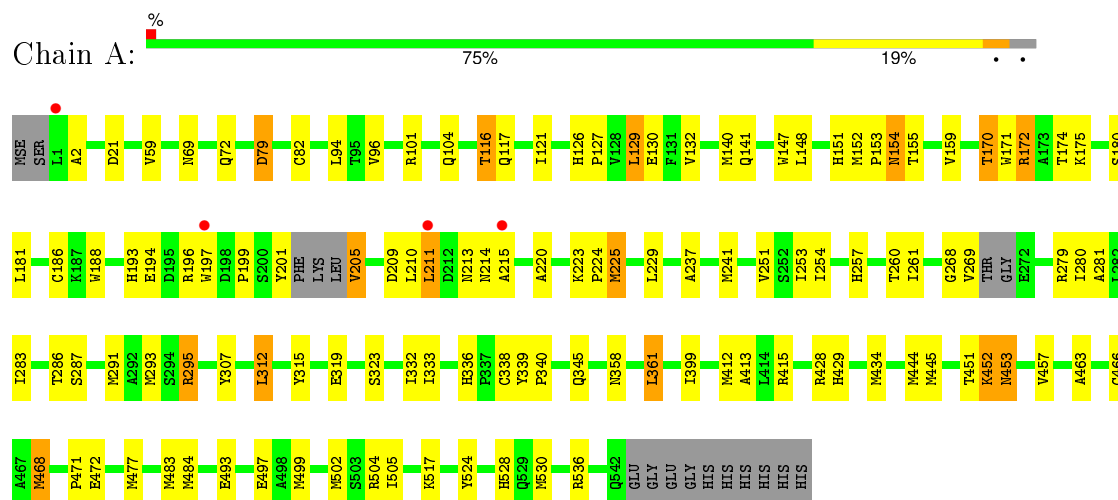
- Molecule 3 is water.

Mol	Chain	Residues	Atoms		ZeroOcc	AltConf
3	A	374	Total	O	0	0
			374	374		
3	B	435	Total	O	0	0
			435	435		

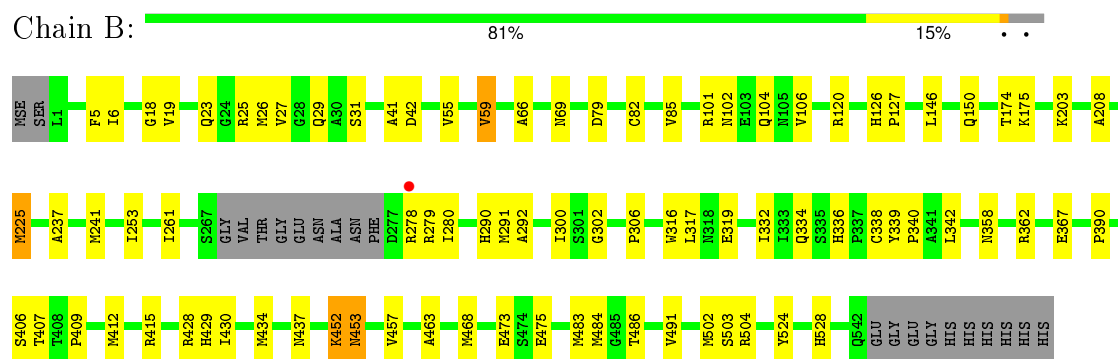
### 3 Residue-property plots

These plots are drawn for all protein, RNA and DNA chains in the entry. The first graphic for a chain summarises the proportions of errors displayed in the second graphic. The second graphic shows the sequence view annotated by issues in geometry and electron density. Residues are color-coded according to the number of geometric quality criteria for which they contain at least one outlier: green = 0, yellow = 1, orange = 2 and red = 3 or more. A red dot above a residue indicates a poor fit to the electron density ( $RSRZ > 2$ ). Stretches of 2 or more consecutive residues without any outlier are shown as a green connector. Residues present in the sample, but not in the model, are shown in grey.

- Molecule 1: glycerol kinase



- Molecule 1: glycerol kinase



## 4 Data and refinement statistics

Property	Value	Source
Space group	P 1 21 1	Depositor
Cell constants a, b, c, $\alpha$ , $\beta$ , $\gamma$	60.79 Å 110.39 Å 80.95 Å 90.00° 99.13° 90.00°	Depositor
Resolution (Å)	36.00 – 2.00 79.93 – 1.80	Depositor EDS
% Data completeness (in resolution range)	98.4 (36.00-2.00) 92.9 (79.93-1.80)	Depositor EDS
$R_{merge}$	0.07	Depositor
$R_{sym}$	0.07	Depositor
$\langle I/\sigma(I) \rangle$ <sup>1</sup>	2.66 (at 1.80 Å)	Xtriage
Refinement program	PHENIX (phenix.refine)	Depositor
R, $R_{free}$	0.198 , 0.245 0.201 , 0.204	Depositor DCC
$R_{free}$ test set	3550 reflections (5.34%)	DCC
Wilson B-factor (Å <sup>2</sup> )	24.1	Xtriage
Anisotropy	0.765	Xtriage
Bulk solvent $k_{sol}$ (e/Å <sup>3</sup> ), $B_{sol}$ (Å <sup>2</sup> )	0.36 , 53.1	EDS
Estimated twinning fraction	No twinning to report.	Xtriage
L-test for twinning <sup>2</sup>	$\langle  L  \rangle = 0.48$ , $\langle L^2 \rangle = 0.30$	Xtriage
Outliers	0 of 90545 reflections	Xtriage
$F_o, F_c$ correlation	0.95	EDS
Total number of atoms	9004	wwPDB-VP
Average B, all atoms (Å <sup>2</sup> )	28.0	wwPDB-VP

Xtriage's analysis on translational NCS is as follows: *The largest off-origin peak in the Patterson function is 5.81% of the height of the origin peak. No significant pseudotranslation is detected.*

<sup>1</sup>Intensities estimated from amplitudes.

<sup>2</sup>Theoretical values of  $\langle |L| \rangle$ ,  $\langle L^2 \rangle$  for acentric reflections are 0.5, 0.375 respectively for untwinned datasets, and 0.333, 0.2 for perfectly twinned datasets.

## 5 Model quality

### 5.1 Standard geometry

Bond lengths and bond angles in the following residue types are not validated in this section: BTB

The Z score for a bond length (or angle) is the number of standard deviations the observed value is removed from the expected value. A bond length (or angle) with  $|Z| > 5$  is considered an outlier worth inspection. RMSZ is the root-mean-square of all Z scores of the bond lengths (or angles).

Mol	Chain	Bond lengths		Bond angles	
		RMSZ	# Z  >5	RMSZ	# Z  >5
1	A	0.34	0/4162	0.50	0/5611
1	B	0.35	0/4154	0.50	0/5600
All	All	0.35	0/8316	0.50	0/11211

There are no bond length outliers.

There are no bond angle outliers.

There are no chirality outliers.

There are no planarity outliers.

### 5.2 Too-close contacts

In the following table, the Non-H and H(model) columns list the number of non-hydrogen atoms and hydrogen atoms in the chain respectively. The H(added) column lists the number of hydrogen atoms added and optimized by MolProbity. The Clashes column lists the number of clashes within the asymmetric unit, whereas Symm-Clashes lists symmetry related clashes.

Mol	Chain	Non-H	H(model)	H(added)	Clashes	Symm-Clashes
1	A	4095	0	4029	107	0
1	B	4086	0	4040	76	0
2	B	14	0	17	1	0
3	A	374	0	0	8	0
3	B	435	0	0	6	0
All	All	9004	0	8086	183	0

The all-atom clashscore is defined as the number of clashes found per 1000 atoms (including hydrogen atoms). The all-atom clashscore for this structure is 11.

All (183) close contacts within the same asymmetric unit are listed below, sorted by their clash magnitude.



Atom-1	Atom-2	Interatomic distance (Å)	Clash overlap (Å)
1:B:291:MSE:HE2	1:B:317:LEU:HD11	1.42	0.99
1:A:253:ILE:HD12	1:A:484:MSE:HE1	1.51	0.91
1:B:253:ILE:HD12	1:B:484:MSE:HE1	1.53	0.89
1:B:101:ARG:HH21	1:B:104:GLN:HE21	1.22	0.87
1:B:291:MSE:HE1	1:B:317:LEU:HD21	1.58	0.85
1:A:336:HIS:HD2	1:A:338:CYS:H	1.21	0.84
1:A:261:ILE:HD12	1:A:484:MSE:HE3	1.59	0.83
1:B:261:ILE:HD12	1:B:484:MSE:HE3	1.61	0.81
1:A:445:MSE:HE3	3:A:723:HOH:O	1.82	0.79
1:B:278:ARG:HG3	1:B:279:ARG:HG3	1.65	0.77
1:A:253:ILE:HD12	1:A:484:MSE:CE	2.14	0.77
1:A:215:ALA:HB2	1:A:220:ALA:HB3	1.66	0.77
1:A:154:ASN:H	1:A:154:ASN:ND2	1.83	0.76
1:B:336:HIS:HD2	1:B:338:CYS:H	1.36	0.73
1:B:291:MSE:CE	1:B:317:LEU:HD21	2.18	0.72
1:A:225:MSE:HG2	1:A:484:MSE:CE	2.19	0.72
1:A:154:ASN:H	1:A:154:ASN:HD22	1.37	0.71
1:A:147:TRP:HH2	1:A:152:MSE:HE3	1.56	0.71
1:A:225:MSE:HG2	1:A:484:MSE:HE1	1.73	0.70
1:A:281:ALA:HB3	1:A:291:MSE:HB2	1.71	0.70
1:A:96:VAL:HG23	1:A:148:LEU:HD21	1.73	0.70
1:B:261:ILE:HD12	1:B:484:MSE:CE	2.22	0.69
1:B:18:GLY:HA3	1:B:26:MSE:HE3	1.74	0.69
1:A:237:ALA:O	1:A:241:MSE:HG3	1.94	0.68
1:B:457:VAL:HG13	1:B:468:MSE:HE2	1.76	0.67
1:A:336:HIS:CD2	1:A:338:CYS:H	2.09	0.67
1:B:292:ALA:HB3	1:B:434:MSE:HE1	1.77	0.67
1:A:215:ALA:CB	1:A:220:ALA:HB3	2.24	0.66
1:A:229:LEU:HD11	1:A:251:VAL:HA	1.76	0.66
1:B:452:LYS:HE2	3:B:942:HOH:O	1.94	0.66
1:A:147:TRP:CH2	1:A:152:MSE:HE3	2.30	0.66
1:A:126:HIS:CG	1:A:127:PRO:HD2	2.30	0.66
1:B:120:ARG:NH1	1:B:146:LEU:HD21	2.11	0.65
1:A:444:MSE:HE2	1:A:466:CYS:HB2	1.78	0.64
1:B:225:MSE:HG2	1:B:484:MSE:CE	2.27	0.64
1:A:174:THR:O	1:A:175:LYS:HB2	1.98	0.64
1:A:279:ARG:NH2	1:A:445:MSE:HE2	2.13	0.63
1:B:55:VAL:O	1:B:59:VAL:HG13	1.98	0.63
1:B:291:MSE:HE3	1:B:319:GLU:HB2	1.78	0.63
1:A:59:VAL:HG21	1:A:241:MSE:HE2	1.81	0.62
1:B:253:ILE:HD12	1:B:484:MSE:CE	2.28	0.62
1:B:225:MSE:HG2	1:B:484:MSE:HE1	1.82	0.62

Continued on next page...

*Continued from previous page...*

Atom-1	Atom-2	Interatomic distance (Å)	Clash overlap (Å)
1:A:132:VAL:HG11	1:A:140:MSE:HE1	1.82	0.61
1:B:457:VAL:HG22	1:B:468:MSE:CE	2.31	0.60
1:A:453:ASN:C	1:A:453:ASN:HD22	2.03	0.60
1:A:471:PRO:HD2	3:A:849:HOH:O	2.02	0.59
1:A:225:MSE:H	1:A:225:MSE:HE3	1.66	0.59
1:A:536:ARG:NH1	3:A:902:HOH:O	2.36	0.58
1:A:196:ARG:HD2	1:A:197:TRP:O	2.03	0.58
1:A:101:ARG:HH21	1:A:104:GLN:HE21	1.51	0.58
1:B:473:GLU:HG2	3:B:951:HOH:O	2.03	0.58
1:A:96:VAL:CG2	1:A:148:LEU:HD21	2.32	0.58
1:B:428:ARG:HD2	1:B:463:ALA:O	2.04	0.57
1:A:483:MSE:HE2	1:A:502:MSE:HB2	1.86	0.57
1:B:336:HIS:CD2	1:B:338:CYS:H	2.19	0.57
1:B:225:MSE:HE3	1:B:225:MSE:H	1.67	0.57
1:B:524:TYR:CZ	1:B:528:HIS:HE1	2.22	0.57
1:B:18:GLY:HA3	1:B:26:MSE:CE	2.34	0.57
1:B:29:GLN:HG2	3:B:835:HOH:O	2.05	0.57
1:B:225:MSE:N	1:B:225:MSE:HE3	2.21	0.56
1:A:253:ILE:CD1	1:A:484:MSE:HE1	2.31	0.56
1:A:283:ILE:HG22	1:A:477:MSE:HE2	1.88	0.56
1:A:213:ASN:O	1:A:215:ALA:N	2.40	0.55
1:B:126:HIS:CG	1:B:127:PRO:HD2	2.42	0.55
1:B:453:ASN:C	1:B:453:ASN:HD22	2.08	0.55
1:A:472:GLU:OE1	1:A:504:ARG:HD2	2.06	0.55
1:A:261:ILE:CD1	1:A:484:MSE:HE3	2.33	0.55
1:A:225:MSE:N	1:A:225:MSE:HE3	2.21	0.54
1:A:295:ARG:HG3	3:A:592:HOH:O	2.06	0.54
1:A:451:THR:C	1:A:452:LYS:HE2	2.28	0.54
1:A:201:TYR:O	1:A:205:VAL:HB	2.08	0.54
1:B:486:THR:HG21	1:B:502:MSE:SE	2.57	0.54
1:A:524:TYR:CZ	1:A:528:HIS:HE1	2.25	0.54
1:A:493:GLU:HB2	1:A:497:GLU:OE2	2.08	0.54
1:A:211:LEU:O	1:A:211:LEU:HD22	2.08	0.53
1:A:196:ARG:NH1	1:A:199:PRO:HD2	2.24	0.53
1:B:59:VAL:HG21	1:B:241:MSE:HE2	1.91	0.53
1:B:253:ILE:CD1	1:B:484:MSE:HE1	2.32	0.52
1:B:342:LEU:HD22	1:B:412:MSE:HE3	1.90	0.52
1:A:452:LYS:HA	1:A:452:LYS:CE	2.39	0.52
1:A:358:ASN:HD21	1:A:453:ASN:ND2	2.07	0.52
1:A:429:HIS:HD2	3:A:586:HOH:O	1.92	0.52
1:B:358:ASN:HD21	1:B:453:ASN:ND2	2.08	0.51

*Continued on next page...*

*Continued from previous page...*

Atom-1	Atom-2	Interatomic distance (Å)	Clash overlap (Å)
1:B:306:PRO:HB2	1:B:316:TRP:HE3	1.74	0.51
1:B:82:CYS:SG	2:B:600:BTB:H61	2.49	0.51
1:B:457:VAL:HG22	1:B:468:MSE:HE1	1.90	0.51
1:A:69:ASN:O	1:A:72:GLN:HB2	2.10	0.51
1:A:312:LEU:HD22	1:A:315:TYR:CD2	2.46	0.51
1:A:186:CYS:HA	1:A:307:TYR:CE2	2.45	0.51
3:A:712:HOH:O	1:B:69:ASN:HB3	2.10	0.50
1:A:127:PRO:O	1:A:130:GLU:OE2	2.28	0.50
1:B:85:VAL:HG22	1:B:106:VAL:HG22	1.91	0.50
1:A:339:TYR:HB3	1:A:340:PRO:HD3	1.93	0.50
1:A:170:THR:HG23	1:A:229:LEU:HD13	1.94	0.50
1:A:101:ARG:NH2	1:A:104:GLN:HE21	2.10	0.49
1:A:517:LYS:HG2	3:A:637:HOH:O	2.11	0.49
1:B:225:MSE:HG2	1:B:484:MSE:SE	2.62	0.49
1:B:524:TYR:CZ	1:B:528:HIS:CE1	3.01	0.49
1:B:5:PHE:HZ	1:B:491:VAL:HG21	1.77	0.48
1:B:332:ILE:CG2	1:B:415:ARG:HG2	2.43	0.48
1:A:180:SER:OG	1:A:225:MSE:HE2	2.12	0.48
1:A:260:THR:OG1	1:A:291:MSE:HG3	2.13	0.48
1:A:293:MSE:HE1	1:A:312:LEU:HD13	1.96	0.48
1:A:197:TRP:O	1:A:199:PRO:HD3	2.13	0.48
1:A:283:ILE:CG2	1:A:477:MSE:HE2	2.44	0.48
1:B:261:ILE:CD1	1:B:484:MSE:CE	2.92	0.48
1:B:126:HIS:ND1	1:B:127:PRO:HD2	2.28	0.48
1:A:170:THR:CG2	1:A:229:LEU:HD13	2.43	0.47
1:B:120:ARG:HH12	1:B:150:GLN:NE2	2.13	0.47
1:A:141:GLN:HG3	1:A:188:TRP:NE1	2.29	0.47
1:A:268:GLY:O	1:A:269:VAL:CB	2.62	0.47
1:B:339:TYR:HB3	1:B:340:PRO:HD3	1.97	0.47
1:B:306:PRO:HB2	1:B:316:TRP:CE3	2.49	0.47
1:B:406:SER:HB2	3:B:581:HOH:O	2.15	0.47
1:A:94:LEU:HG	1:A:155:THR:HG23	1.97	0.47
1:B:300:ILE:HG12	1:B:437:ASN:HB3	1.96	0.47
1:A:59:VAL:HG21	1:A:241:MSE:CE	2.44	0.47
1:A:280:ILE:HD12	1:A:434:MSE:SE	2.65	0.47
1:B:101:ARG:NH2	1:B:104:GLN:HE21	2.02	0.46
1:B:524:TYR:OH	1:B:528:HIS:HE1	1.97	0.46
1:B:504:ARG:HD3	3:B:928:HOH:O	2.15	0.46
1:A:295:ARG:NH2	1:A:315:TYR:CE2	2.84	0.46
1:A:332:ILE:HG23	1:A:415:ARG:HD3	1.98	0.46
1:B:237:ALA:O	1:B:241:MSE:HG3	2.16	0.46

*Continued on next page...*

*Continued from previous page...*

Atom-1	Atom-2	Interatomic distance (Å)	Clash overlap (Å)
1:A:261:ILE:HA	1:A:499:MSE:HE3	1.98	0.46
1:A:82:CYS:HB3	1:A:254:ILE:HD13	1.98	0.46
1:A:141:GLN:HA	1:A:141:GLN:OE1	2.16	0.46
1:A:193:HIS:CD2	1:A:194:GLU:HG3	2.50	0.46
1:B:120:ARG:NH1	1:B:150:GLN:HE22	2.13	0.46
1:A:171:TRP:CE3	1:A:172:ARG:HG2	2.51	0.46
1:B:41:ALA:O	1:B:42:ASP:HB2	2.15	0.46
1:A:223:LYS:HB3	1:A:224:PRO:HD2	1.98	0.45
1:A:151:HIS:C	1:A:153:PRO:HD3	2.37	0.45
1:A:181:LEU:HB2	1:A:225:MSE:HE1	1.99	0.45
1:A:312:LEU:CD2	3:A:600:HOH:O	2.64	0.45
1:B:457:VAL:HG22	1:B:468:MSE:HE2	1.98	0.45
1:B:302:GLY:HA3	1:B:390:PRO:O	2.16	0.45
1:A:121:ILE:HG12	1:A:205:VAL:HG22	1.99	0.45
1:A:457:VAL:HG13	1:A:468:MSE:HG2	1.98	0.45
1:A:155:THR:O	1:A:159:VAL:HG23	2.16	0.45
1:A:152:MSE:N	1:A:153:PRO:HD3	2.33	0.44
1:A:333:ILE:HG23	1:A:412:MSE:CE	2.48	0.44
1:B:6:ILE:HG12	1:B:19:VAL:HG22	1.98	0.44
1:A:126:HIS:O	1:A:129:LEU:HB2	2.17	0.44
1:A:254:ILE:HB	1:A:257:HIS:ND1	2.32	0.43
1:B:409:PRO:HA	1:B:412:MSE:HE2	1.99	0.43
1:A:291:MSE:SE	1:A:319:GLU:HG3	2.68	0.43
1:B:358:ASN:HD21	1:B:453:ASN:HD21	1.64	0.43
1:A:2:ALA:O	1:A:72:GLN:CG	2.67	0.43
1:A:451:THR:O	1:A:452:LYS:HE2	2.19	0.43
1:A:79:ASP:HA	1:A:253:ILE:O	2.19	0.42
1:A:148:LEU:HD23	1:A:148:LEU:HA	1.87	0.42
1:B:280:ILE:HD11	1:B:290:HIS:HB3	2.00	0.42
1:A:399:ILE:HB	1:A:530:MSE:HE2	2.01	0.42
1:A:116:THR:HG22	1:A:117:GLN:OE1	2.19	0.42
1:A:287:SER:HB3	1:A:323:SER:O	2.19	0.42
1:B:203:LYS:HA	1:B:208:ALA:HB2	2.02	0.42
1:B:483:MSE:HE2	1:B:502:MSE:HB2	2.00	0.42
1:B:483:MSE:HE1	1:B:503:SER:HB3	2.01	0.42
1:A:453:ASN:C	1:A:453:ASN:ND2	2.71	0.42
1:B:429:HIS:HD2	3:B:771:HOH:O	2.01	0.42
1:A:452:LYS:CA	1:A:452:LYS:HE2	2.50	0.42
1:A:268:GLY:HA2	1:A:505:ILE:HD12	2.02	0.42
1:B:358:ASN:O	1:B:362:ARG:HG3	2.20	0.42
1:A:211:LEU:C	1:A:211:LEU:HD13	2.40	0.42

*Continued on next page...*

*Continued from previous page...*

Atom-1	Atom-2	Interatomic distance (Å)	Clash overlap (Å)
1:B:174:THR:O	1:B:175:LYS:HB2	2.20	0.42
1:B:407:THR:O	1:B:407:THR:HG22	2.20	0.41
1:A:361:LEU:HD13	1:A:413:ALA:HB1	2.02	0.41
1:A:428:ARG:HD2	1:A:463:ALA:O	2.21	0.41
1:A:253:ILE:HG12	1:A:254:ILE:N	2.36	0.41
1:A:358:ASN:HD21	1:A:453:ASN:HD21	1.68	0.41
1:B:342:LEU:HD22	1:B:412:MSE:CE	2.51	0.41
1:B:334:GLN:HG2	1:B:339:TYR:CZ	2.56	0.41
1:A:21:ASP:OD1	1:A:21:ASP:C	2.59	0.41
1:A:126:HIS:ND1	1:A:127:PRO:HD2	2.36	0.41
1:B:473:GLU:OE1	1:B:475:GLU:N	2.52	0.41
1:B:27:VAL:O	1:B:66:ALA:HA	2.21	0.41
1:B:430:ILE:O	1:B:434:MSE:HG3	2.20	0.41
1:B:102:ASN:HA	1:B:102:ASN:HD22	1.77	0.40
1:A:253:ILE:HB	1:A:484:MSE:HE1	2.04	0.40
1:A:209:ASP:N	1:A:209:ASP:OD1	2.55	0.40
1:A:154:ASN:N	1:A:154:ASN:ND2	2.59	0.40
1:A:524:TYR:CZ	1:A:528:HIS:CE1	3.08	0.40

There are no symmetry-related clashes.

## 5.3 Torsion angles ⓘ

### 5.3.1 Protein backbone ⓘ

In the following table, the Percentiles column shows the percent Ramachandran outliers of the chain as a percentile score with respect to all X-ray entries followed by that with respect to entries of similar resolution.

The Analysed column shows the number of residues for which the backbone conformation was analysed, and the total number of residues.

Mol	Chain	Analysed	Favoured	Allowed	Outliers	Percentiles	
1	A	531/554 (96%)	510 (96%)	20 (4%)	1 (0%)	52	48
1	B	529/554 (96%)	512 (97%)	17 (3%)	0	100	100
All	All	1060/1108 (96%)	1022 (96%)	37 (4%)	1 (0%)	56	53

All (1) Ramachandran outliers are listed below:

Mol	Chain	Res	Type
1	A	214	ASN

### 5.3.2 Protein sidechains ⓘ

In the following table, the Percentiles column shows the percent sidechain outliers of the chain as a percentile score with respect to all X-ray entries followed by that with respect to entries of similar resolution.

The Analysed column shows the number of residues for which the sidechain conformation was analysed, and the total number of residues.

Mol	Chain	Analysed	Rotameric	Outliers	Percentiles	
1	A	428/423 (101%)	410 (96%)	18 (4%)	36	31
1	B	431/423 (102%)	422 (98%)	9 (2%)	61	63
All	All	859/846 (102%)	832 (97%)	27 (3%)	47	46

All (27) residues with a non-rotameric sidechain are listed below:

Mol	Chain	Res	Type
1	A	79	ASP
1	A	116	THR
1	A	129	LEU
1	A	154	ASN
1	A	170	THR
1	A	172	ARG
1	A	205	VAL
1	A	210	LEU
1	A	211	LEU
1	A	225	MSE
1	A	286	THR
1	A	295	ARG
1	A	312	LEU
1	A	345	GLN
1	A	361	LEU
1	A	452	LYS
1	A	453	ASN
1	A	468	MSE
1	B	23	GLN
1	B	25	ARG
1	B	31	SER
1	B	59	VAL
1	B	79	ASP

*Continued on next page...*

*Continued from previous page...*

Mol	Chain	Res	Type
1	B	225	MSE
1	B	367	GLU
1	B	452	LYS
1	B	453	ASN

Some sidechains can be flipped to improve hydrogen bonding and reduce clashes. All (22) such sidechains are listed below:

Mol	Chain	Res	Type
1	A	57	ASN
1	A	104	GLN
1	A	154	ASN
1	A	318	ASN
1	A	336	HIS
1	A	363	GLN
1	A	429	HIS
1	A	453	ASN
1	A	514	ASN
1	A	528	HIS
1	B	23	GLN
1	B	102	ASN
1	B	104	GLN
1	B	154	ASN
1	B	235	GLN
1	B	336	HIS
1	B	345	GLN
1	B	429	HIS
1	B	453	ASN
1	B	458	GLN
1	B	514	ASN
1	B	528	HIS

### 5.3.3 RNA ⓘ

There are no RNA molecules in this entry.

## 5.4 Non-standard residues in protein, DNA, RNA chains ⓘ

There are no non-standard protein/DNA/RNA residues in this entry.

## 5.5 Carbohydrates

There are no carbohydrates in this entry.

## 5.6 Ligand geometry

1 ligand is modelled in this entry.

In the following table, the Counts columns list the number of bonds (or angles) for which Mogul statistics could be retrieved, the number of bonds (or angles) that are observed in the model and the number of bonds (or angles) that are defined in the chemical component dictionary. The Link column lists molecule types, if any, to which the group is linked. The Z score for a bond length (or angle) is the number of standard deviations the observed value is removed from the expected value. A bond length (or angle) with  $|Z| > 2$  is considered an outlier worth inspection. RMSZ is the root-mean-square of all Z scores of the bond lengths (or angles).

Mol	Type	Chain	Res	Link	Bond lengths			Bond angles		
					Counts	RMSZ	$\# Z  > 2$	Counts	RMSZ	$\# Z  > 2$
2	BTB	B	600	-	12,13,13	1.80	2 (16%)	8,16,16	2.41	5 (62%)

In the following table, the Chirals column lists the number of chiral outliers, the number of chiral centers analysed, the number of these observed in the model and the number defined in the chemical component dictionary. Similar counts are reported in the Torsion and Rings columns. '-' means no outliers of that kind were identified.

Mol	Type	Chain	Res	Link	Chirals	Torsions	Rings
2	BTB	B	600	-	-	0/21/21/21	0/0/0/0

All (2) bond length outliers are listed below:

Mol	Chain	Res	Type	Atoms	Z	Observed(Å)	Ideal(Å)
2	B	600	BTB	O6-C6	-4.17	1.19	1.42
2	B	600	BTB	O8-C8	-4.07	1.20	1.42

All (5) bond angle outliers are listed below:

Mol	Chain	Res	Type	Atoms	Z	Observed(°)	Ideal(°)
2	B	600	BTB	O8-C8-C7	2.26	121.62	111.28
2	B	600	BTB	C7-N-C2	2.26	120.40	113.86
2	B	600	BTB	O3-C3-C2	2.48	117.09	111.12
2	B	600	BTB	O1-C1-C2	3.11	118.62	111.12
2	B	600	BTB	O4-C4-C2	3.17	118.77	111.12

There are no chirality outliers.



There are no torsion outliers.

There are no ring outliers.

1 monomer is involved in 1 short contact:

Mol	Chain	Res	Type	Clashes	Symm-Clashes
2	B	600	BTB	1	0

## 5.7 Other polymers [i](#)

There are no such residues in this entry.

## 5.8 Polymer linkage issues [i](#)

There are no chain breaks in this entry.

## 6 Fit of model and data [i](#)

### 6.1 Protein, DNA and RNA chains [i](#)

In the following table, the column labelled ‘#RSRZ> 2’ contains the number (and percentage) of RSRZ outliers, followed by percent RSRZ outliers for the chain as percentile scores relative to all X-ray entries and entries of similar resolution. The OWAB column contains the minimum, median, 95<sup>th</sup> percentile and maximum values of the occupancy-weighted average B-factor per residue. The column labelled ‘Q< 0.9’ lists the number of (and percentage) of residues with an average occupancy less than 0.9.

Mol	Chain	Analysed	<RSRZ>	#RSRZ>2	OWAB(Å <sup>2</sup> )	Q<0.9
1	A	513/554 (92%)	-0.12	4 (0%) 87 88	13, 29, 43, 55	0
1	B	509/554 (91%)	-0.33	1 (0%) 95 95	14, 25, 38, 48	0
All	All	1022/1108 (92%)	-0.23	5 (0%) 91 92	13, 27, 41, 55	0

All (5) RSRZ outliers are listed below:

Mol	Chain	Res	Type	RSRZ
1	A	215	ALA	4.5
1	A	211	LEU	2.5
1	B	278	ARG	2.5
1	A	1	LEU	2.2
1	A	197	TRP	2.1

### 6.2 Non-standard residues in protein, DNA, RNA chains [i](#)

There are no non-standard protein/DNA/RNA residues in this entry.

### 6.3 Carbohydrates [i](#)

There are no carbohydrates in this entry.

### 6.4 Ligands [i](#)

In the following table, the Atoms column lists the number of modelled atoms in the group and the number defined in the chemical component dictionary. LLDF column lists the quality of electron density of the group with respect to its neighbouring residues in protein, DNA or RNA chains. The B-factors column lists the minimum, median, 95<sup>th</sup> percentile and maximum values of B factors of atoms in the group. The column labelled ‘Q< 0.9’ lists the number of atoms with occupancy less than 0.9.

Mol	Type	Chain	Res	Atoms	RSCC	RSR	LLDF	B-factors( $\text{\AA}^2$ )	Q<0.9
2	BTB	B	600	14/14	0.90	0.16	6.94	24,27,30,31	0

## 6.5 Other polymers ⓘ

There are no such residues in this entry.