



wwPDB X-ray Structure Validation Summary Report ⓘ

Feb 1, 2016 – 08:54 AM GMT

PDB ID : 3GID
Title : The biotin carboxylase (BC) domain of human Acetyl-CoA Carboxylase 2 (ACC2) in complex with Soraphen A
Authors : Price, A.; Kulathila, R.
Deposited on : 2009-03-05
Resolution : 2.30 Å(reported)

This is a wwPDB X-ray Structure Validation Summary Report for a publicly released PDB entry.
We welcome your comments at validation@mail.wwpdb.org
A user guide is available at
<http://wwpdb.org/validation/2016/XrayValidationReportHelp>
with specific help available everywhere you see the ⓘ symbol.

The following versions of software and data (see [references ⓘ](#)) were used in the production of this report:

MolProbity : 4.02b-467
Mogul : 1.7 (RC4), CSD as536be (2015)
Xtriage (Phenix) : 1.9-1692
EDS : rb-20026688
Percentile statistics : 20151230.v01 (using entries in the PDB archive December 30th 2015)
Refmac : 5.8.0135
CCP4 : 6.5.0
Ideal geometry (proteins) : Engh & Huber (2001)
Ideal geometry (DNA, RNA) : Parkinson et al. (1996)
Validation Pipeline (wwPDB-VP) : trunk26865

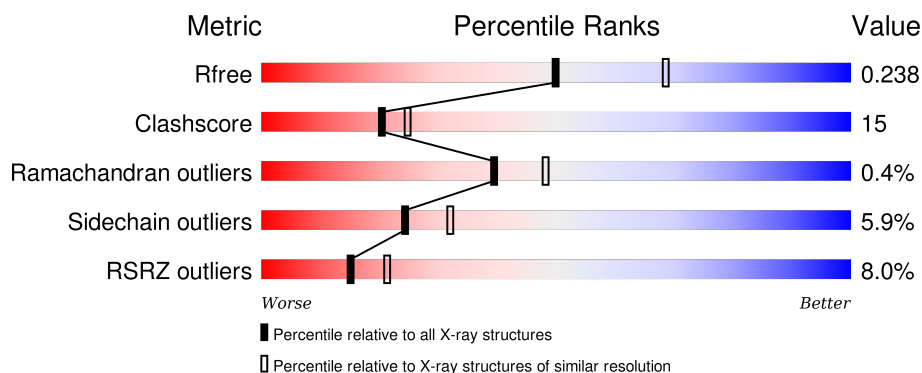
1 Overall quality at a glance

The following experimental techniques were used to determine the structure:

X-RAY DIFFRACTION

The reported resolution of this entry is 2.30 Å.

Percentile scores (ranging between 0-100) for global validation metrics of the entry are shown in the following graphic. The table shows the number of entries on which the scores are based.



Metric	Whole archive (#Entries)	Similar resolution (#Entries, resolution range(Å))
R_{free}	91344	3852 (2.30-2.30)
Clashscore	102246	4452 (2.30-2.30)
Ramachandran outliers	100387	4410 (2.30-2.30)
Sidechain outliers	100360	4409 (2.30-2.30)
RSRZ outliers	91569	3857 (2.30-2.30)

The table below summarises the geometric issues observed across the polymeric chains and their fit to the electron density. The red, orange, yellow and green segments on the lower bar indicate the fraction of residues that contain outliers for ≥ 3 , 2, 1 and 0 types of geometric quality criteria. A grey segment represents the fraction of residues that are not modelled. The numeric value for each fraction is indicated below the corresponding segment, with a dot representing fractions $\leq 5\%$. The upper red bar (where present) indicates the fraction of residues that have poor fit to the electron density. The numeric value is given above the bar.

Mol	Chain	Length	Quality of chain
1	A	540	<div> <div>7%</div> <div>61%</div> <div>22%</div> <div>•</div> <div>15%</div> </div>
1	B	540	<div> <div>6%</div> <div>59%</div> <div>24%</div> <div>•</div> <div>15%</div> </div>

2 Entry composition

There are 3 unique types of molecules in this entry. The entry contains 7413 atoms, of which 0 are hydrogens and 0 are deuteriums.

In the tables below, the ZeroOcc column contains the number of atoms modelled with zero occupancy, the AltConf column contains the number of residues with at least one atom in alternate conformation and the Trace column contains the number of residues modelled with at most 2 atoms.

- Molecule 1 is a protein called Acetyl-CoA carboxylase 2.

Mol	Chain	Residues	Atoms					ZeroOcc	AltConf	Trace
1	A	460	Total	C	N	O	S	0	0	0
			3582	2287	616	661	18			
1	B	457	Total	C	N	O	S	0	0	0
			3560	2275	613	654	18			

There are 34 discrepancies between the modelled and reference sequences:

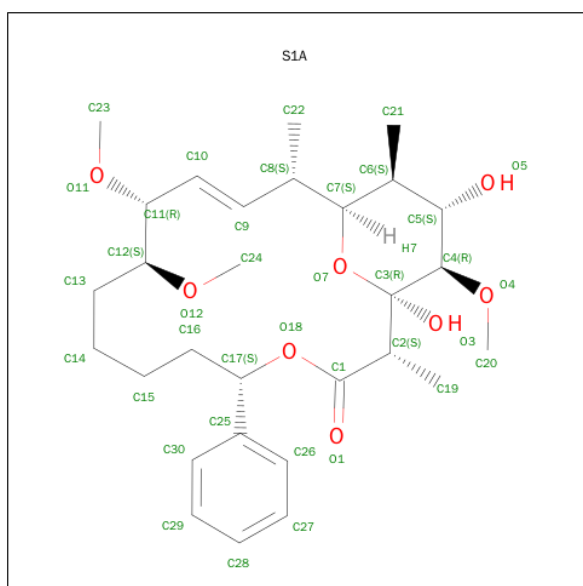
Chain	Residue	Modelled	Actual	Comment	Reference
A	221	MET	-	EXPRESSION TAG	UNP O00763
A	222	GLY	-	EXPRESSION TAG	UNP O00763
A	223	SER	-	EXPRESSION TAG	UNP O00763
A	224	SER	-	EXPRESSION TAG	UNP O00763
A	225	HIS	-	EXPRESSION TAG	UNP O00763
A	226	HIS	-	EXPRESSION TAG	UNP O00763
A	227	HIS	-	EXPRESSION TAG	UNP O00763
A	228	HIS	-	EXPRESSION TAG	UNP O00763
A	229	HIS	-	EXPRESSION TAG	UNP O00763
A	230	HIS	-	EXPRESSION TAG	UNP O00763
A	231	GLU	-	EXPRESSION TAG	UNP O00763
A	232	ASN	-	EXPRESSION TAG	UNP O00763
A	233	LEU	-	EXPRESSION TAG	UNP O00763
A	234	TYR	-	EXPRESSION TAG	UNP O00763
A	235	PHE	-	EXPRESSION TAG	UNP O00763
A	236	GLN	-	EXPRESSION TAG	UNP O00763
A	237	GLY	-	EXPRESSION TAG	UNP O00763
B	221	MET	-	EXPRESSION TAG	UNP O00763
B	222	GLY	-	EXPRESSION TAG	UNP O00763
B	223	SER	-	EXPRESSION TAG	UNP O00763
B	224	SER	-	EXPRESSION TAG	UNP O00763
B	225	HIS	-	EXPRESSION TAG	UNP O00763
B	226	HIS	-	EXPRESSION TAG	UNP O00763
B	227	HIS	-	EXPRESSION TAG	UNP O00763
B	228	HIS	-	EXPRESSION TAG	UNP O00763

Continued on next page...

Continued from previous page...

Chain	Residue	Modelled	Actual	Comment	Reference
B	229	HIS	-	EXPRESSION TAG	UNP O00763
B	230	HIS	-	EXPRESSION TAG	UNP O00763
B	231	GLU	-	EXPRESSION TAG	UNP O00763
B	232	ASN	-	EXPRESSION TAG	UNP O00763
B	233	LEU	-	EXPRESSION TAG	UNP O00763
B	234	TYR	-	EXPRESSION TAG	UNP O00763
B	235	PHE	-	EXPRESSION TAG	UNP O00763
B	236	GLN	-	EXPRESSION TAG	UNP O00763
B	237	GLY	-	EXPRESSION TAG	UNP O00763

- Molecule 2 is SORAPHEN A (three-letter code: S1A) (formula: $C_{29}H_{44}O_8$).



Mol	Chain	Residues	Atoms	ZeroOcc	AltConf
2	A	1	Total C O 37 29 8	0	0
2	B	1	Total C O 37 29 8	0	0

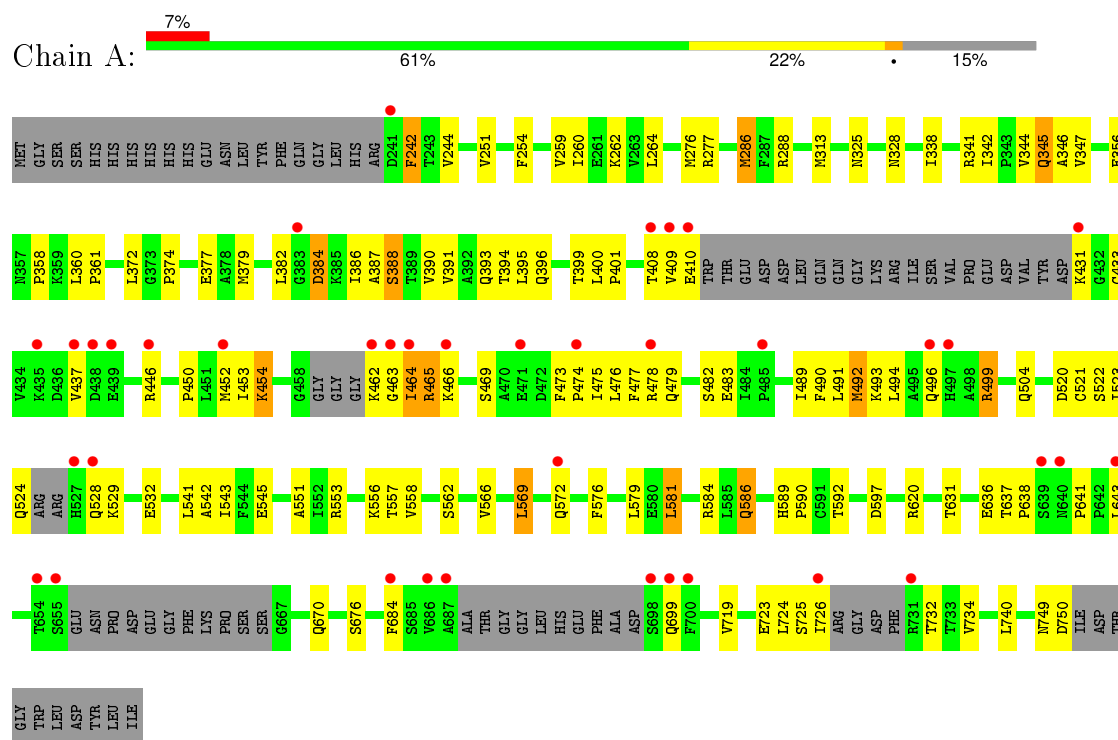
- Molecule 3 is water.

Mol	Chain	Residues	Atoms	ZeroOcc	AltConf
3	A	100	Total O 100 100	0	0
3	B	97	Total O 97 97	0	0

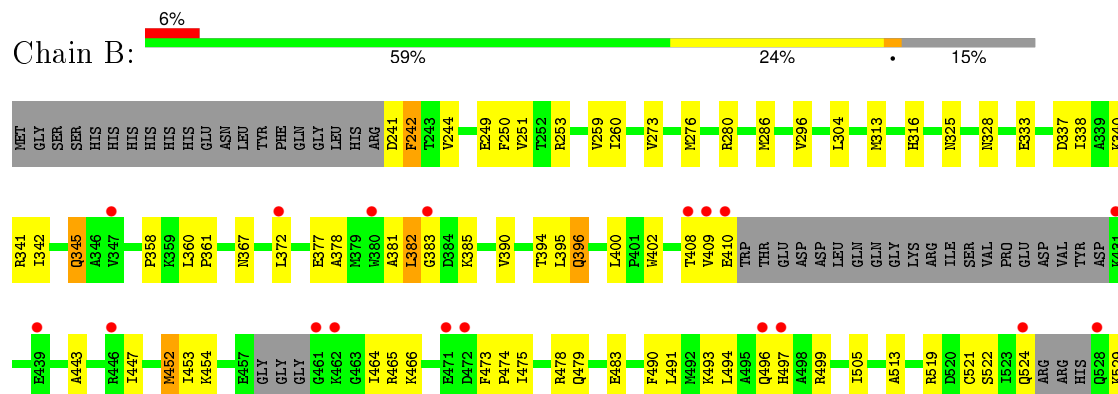
3 Residue-property plots

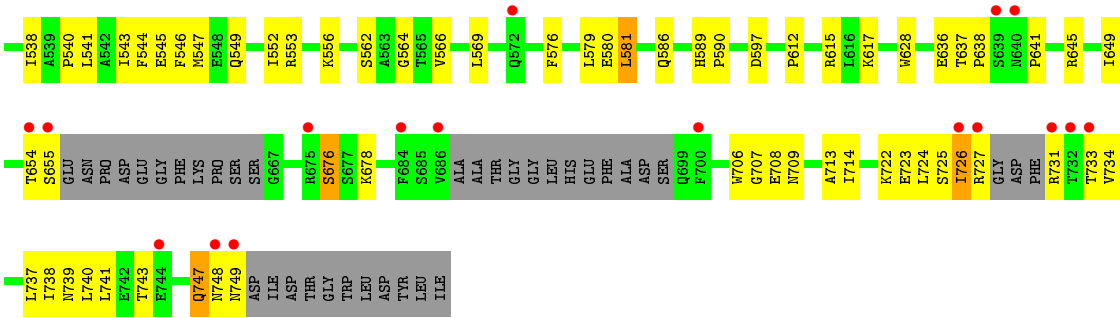
These plots are drawn for all protein, RNA and DNA chains in the entry. The first graphic for a chain summarises the proportions of errors displayed in the second graphic. The second graphic shows the sequence view annotated by issues in geometry and electron density. Residues are color-coded according to the number of geometric quality criteria for which they contain at least one outlier: green = 0, yellow = 1, orange = 2 and red = 3 or more. A red dot above a residue indicates a poor fit to the electron density ($RSRZ > 2$). Stretches of 2 or more consecutive residues without any outlier are shown as a green connector. Residues present in the sample, but not in the model, are shown in grey.

• Molecule 1: Acetyl-CoA carboxylase 2



• Molecule 1: Acetyl-CoA carboxylase 2





4 Data and refinement statistics

Property	Value	Source
Space group	C 2 2 21	Depositor
Cell constants a, b, c, α , β , γ	138.34Å 141.00Å 123.61Å 90.00° 90.00° 90.00°	Depositor
Resolution (Å)	26.80 – 2.30 26.79 – 2.30	Depositor EDS
% Data completeness (in resolution range)	93.3 (26.80-2.30) 93.4 (26.79-2.30)	Depositor EDS
R_{merge}	0.09	Depositor
R_{sym}	(Not available)	Depositor
$\langle I/\sigma(I) \rangle$ ¹	3.89 (at 2.31Å)	Xtriage
Refinement program	CNX	Depositor
R, R_{free}	0.200 , 0.242 0.196 , 0.238	Depositor DCC
R_{free} test set	2603 reflections (5.46%)	DCC
Wilson B-factor (Å ²)	31.8	Xtriage
Anisotropy	0.072	Xtriage
Bulk solvent k_{sol} (e/Å ³), B_{sol} (Å ²)	0.40 , 50.3	EDS
Estimated twinning fraction	0.036 for -k,-h,-l	Xtriage
L-test for twinning ²	$\langle L \rangle = 0.47$, $\langle L^2 \rangle = 0.30$	Xtriage
Outliers	0 of 51846 reflections	Xtriage
F_o, F_c correlation	0.94	EDS
Total number of atoms	7413	wwPDB-VP
Average B, all atoms (Å ²)	36.0	wwPDB-VP

Xtriage's analysis on translational NCS is as follows: *The largest off-origin peak in the Patterson function is 3.28% of the height of the origin peak. No significant pseudotranslation is detected.*

¹Intensities estimated from amplitudes.

²Theoretical values of $\langle |L| \rangle$, $\langle L^2 \rangle$ for acentric reflections are 0.5, 0.375 respectively for untwinned datasets, and 0.333, 0.2 for perfectly twinned datasets.

5 Model quality ⓘ

5.1 Standard geometry ⓘ

Bond lengths and bond angles in the following residue types are not validated in this section: S1A

The Z score for a bond length (or angle) is the number of standard deviations the observed value is removed from the expected value. A bond length (or angle) with $|Z| > 5$ is considered an outlier worth inspection. RMSZ is the root-mean-square of all Z scores of the bond lengths (or angles).

Mol	Chain	Bond lengths		Bond angles	
		RMSZ	# Z >5	RMSZ	# Z >5
1	A	0.47	0/3660	0.58	0/4965
1	B	0.46	0/3637	0.63	0/4933
All	All	0.47	0/7297	0.61	0/9898

There are no bond length outliers.

There are no bond angle outliers.

There are no chirality outliers.

There are no planarity outliers.

5.2 Too-close contacts ⓘ

In the following table, the Non-H and H(model) columns list the number of non-hydrogen atoms and hydrogen atoms in the chain respectively. The H(added) column lists the number of hydrogen atoms added and optimized by MolProbity. The Clashes column lists the number of clashes within the asymmetric unit, whereas Symm-Clashes lists symmetry related clashes.

Mol	Chain	Non-H	H(model)	H(added)	Clashes	Symm-Clashes
1	A	3582	0	3557	103	0
1	B	3560	0	3543	110	0
2	A	37	0	44	0	0
2	B	37	0	44	0	0
3	A	100	0	0	3	0
3	B	97	0	0	2	0
All	All	7413	0	7188	210	0

The all-atom clashscore is defined as the number of clashes found per 1000 atoms (including hydrogen atoms). The all-atom clashscore for this structure is 15.

The worst 5 of 210 close contacts within the same asymmetric unit are listed below, sorted by

their clash magnitude.

Atom-1	Atom-2	Interatomic distance (Å)	Clash overlap (Å)
1:A:499:ARG:HH11	1:A:499:ARG:HG3	1.14	1.13
1:B:727:ARG:HA	1:B:731:ARG:HD3	1.00	1.00
1:B:727:ARG:CA	1:B:731:ARG:HD3	1.92	1.00
1:B:409:VAL:HG22	1:B:410:GLU:H	1.25	0.99
1:B:727:ARG:HA	1:B:731:ARG:CD	1.92	0.98

There are no symmetry-related clashes.

5.3 Torsion angles [i](#)

5.3.1 Protein backbone [i](#)

In the following table, the Percentiles column shows the percent Ramachandran outliers of the chain as a percentile score with respect to all X-ray entries followed by that with respect to entries of similar resolution.

The Analysed column shows the number of residues for which the backbone conformation was analysed, and the total number of residues.

Mol	Chain	Analysed	Favoured	Allowed	Outliers	Percentiles	
1	A	446/540 (83%)	430 (96%)	14 (3%)	2 (0%)	39	48
1	B	443/540 (82%)	425 (96%)	16 (4%)	2 (0%)	34	41
All	All	889/1080 (82%)	855 (96%)	30 (3%)	4 (0%)	39	48

All (4) Ramachandran outliers are listed below:

Mol	Chain	Res	Type
1	A	562	SER
1	B	562	SER
1	A	749	ASN
1	B	382	LEU

5.3.2 Protein sidechains [i](#)

In the following table, the Percentiles column shows the percent sidechain outliers of the chain as a percentile score with respect to all X-ray entries followed by that with respect to entries of similar resolution.

The Analysed column shows the number of residues for which the sidechain conformation was

analysed, and the total number of residues.

Mol	Chain	Analysed	Rotameric	Outliers	Percentiles	
1	A	383/450 (85%)	356 (93%)	27 (7%)	19	23
1	B	380/450 (84%)	362 (95%)	18 (5%)	32	43
All	All	763/900 (85%)	718 (94%)	45 (6%)	24	32

5 of 45 residues with a non-rotameric sidechain are listed below:

Mol	Chain	Res	Type
1	A	581	LEU
1	A	732	THR
1	B	678	LYS
1	A	597	ASP
1	A	750	ASP

Some sidechains can be flipped to improve hydrogen bonding and reduce clashes. 5 of 6 such sidechains are listed below:

Mol	Chain	Res	Type
1	A	699	GLN
1	B	747	GLN
1	A	747	GLN
1	A	586	GLN
1	B	549	GLN

5.3.3 RNA ⓘ

There are no RNA molecules in this entry.

5.4 Non-standard residues in protein, DNA, RNA chains ⓘ

There are no non-standard protein/DNA/RNA residues in this entry.

5.5 Carbohydrates ⓘ

There are no carbohydrates in this entry.

5.6 Ligand geometry ⓘ

2 ligands are modelled in this entry.

In the following table, the Counts columns list the number of bonds (or angles) for which Mogul statistics could be retrieved, the number of bonds (or angles) that are observed in the model and the number of bonds (or angles) that are defined in the chemical component dictionary. The Link column lists molecule types, if any, to which the group is linked. The Z score for a bond length (or angle) is the number of standard deviations the observed value is removed from the expected value. A bond length (or angle) with $|Z| > 2$ is considered an outlier worth inspection. RMSZ is the root-mean-square of all Z scores of the bond lengths (or angles).

Mol	Type	Chain	Res	Link	Bond lengths			Bond angles		
					Counts	RMSZ	# Z > 2	Counts	RMSZ	# Z > 2
2	S1A	A	1000	-	38,39,39	1.80	9 (23%)	42,55,55	1.20	5 (11%)
2	S1A	B	1000	-	38,39,39	1.97	15 (39%)	42,55,55	1.25	3 (7%)

In the following table, the Chirals column lists the number of chiral outliers, the number of chiral centers analysed, the number of these observed in the model and the number defined in the chemical component dictionary. Similar counts are reported in the Torsion and Rings columns. '-' means no outliers of that kind were identified.

Mol	Type	Chain	Res	Link	Chirals	Torsions	Rings
2	S1A	A	1000	-	-	0/44/67/67	0/1/3/3
2	S1A	B	1000	-	-	0/44/67/67	0/1/3/3

The worst 5 of 24 bond length outliers are listed below:

Mol	Chain	Res	Type	Atoms	Z	Observed(Å)	Ideal(Å)
2	A	1000	S1A	C28-C27	2.02	1.43	1.38
2	B	1000	S1A	O7-C3	2.09	1.47	1.43
2	B	1000	S1A	C27-C26	2.10	1.43	1.38
2	B	1000	S1A	C29-C30	2.15	1.43	1.38
2	A	1000	S1A	C13-C12	2.15	1.56	1.52

The worst 5 of 8 bond angle outliers are listed below:

Mol	Chain	Res	Type	Atoms	Z	Observed(°)	Ideal(°)
2	B	1000	S1A	C16-C17-C25	-3.48	106.63	112.98
2	A	1000	S1A	C16-C17-C25	-3.10	107.33	112.98
2	B	1000	S1A	O1-C1-C2	-2.57	119.16	125.19
2	A	1000	S1A	O1-C1-C2	-2.42	119.53	125.19
2	A	1000	S1A	O18-C17-C16	2.17	110.60	105.88

There are no chirality outliers.

There are no torsion outliers.

There are no ring outliers.

No monomer is involved in short contacts.

5.7 Other polymers

There are no such residues in this entry.

5.8 Polymer linkage issues

There are no chain breaks in this entry.

6 Fit of model and data [i](#)

6.1 Protein, DNA and RNA chains [i](#)

In the following table, the column labelled ‘#RSRZ> 2’ contains the number (and percentage) of RSRZ outliers, followed by percent RSRZ outliers for the chain as percentile scores relative to all X-ray entries and entries of similar resolution. The OWAB column contains the minimum, median, 95th percentile and maximum values of the occupancy-weighted average B-factor per residue. The column labelled ‘Q< 0.9’ lists the number of (and percentage) of residues with an average occupancy less than 0.9.

Mol	Chain	Analysed	<RSRZ>	#RSRZ>2		OWAB(Å ²)	Q<0.9
1	A	460/540 (85%)	0.26	38 (8%)	14 20	16, 32, 67, 88	0
1	B	457/540 (84%)	0.22	35 (7%)	16 23	15, 33, 61, 83	0
All	All	917/1080 (84%)	0.24	73 (7%)	15 21	15, 33, 64, 88	0

The worst 5 of 73 RSRZ outliers are listed below:

Mol	Chain	Res	Type	RSRZ
1	A	431	LYS	6.5
1	A	731	ARG	6.4
1	A	698	SER	6.2
1	A	435	LYS	6.1
1	B	686	VAL	5.5

6.2 Non-standard residues in protein, DNA, RNA chains [i](#)

There are no non-standard protein/DNA/RNA residues in this entry.

6.3 Carbohydrates [i](#)

There are no carbohydrates in this entry.

6.4 Ligands [i](#)

In the following table, the Atoms column lists the number of modelled atoms in the group and the number defined in the chemical component dictionary. LLDF column lists the quality of electron density of the group with respect to its neighbouring residues in protein, DNA or RNA chains. The B-factors column lists the minimum, median, 95th percentile and maximum values of B factors of atoms in the group. The column labelled ‘Q< 0.9’ lists the number of atoms with occupancy less than 0.9.

Mol	Type	Chain	Res	Atoms	RSCC	RSR	LLDF	B-factors(\AA^2)	Q<0.9
2	S1A	B	1000	37/37	0.96	0.11	-0.45	18,23,27,35	0
2	S1A	A	1000	37/37	0.97	0.11	-0.58	15,21,26,32	0

6.5 Other polymers [i](#)

There are no such residues in this entry.