



Full wwPDB X-ray Structure Validation Report ⓘ

Jan 31, 2016 – 07:39 PM GMT

PDB ID : 1GNN
Title : HIV-1 PROTEASE MUTANT WITH VAL 82 REPLACED BY ASN (V82N)
COMPLEXED WITH U89360E (INHIBITOR)
Authors : Hong, L.; Treharne, A.; Hartsuck, J.A.; Foundling, S.; Tang, J.
Deposited on : 1996-05-04
Resolution : 2.30 Å(reported)

This is a Full wwPDB X-ray Structure Validation Report for a publicly released PDB entry.
We welcome your comments at validation@mail.wwpdb.org
A user guide is available at
<http://wwpdb.org/validation/2016/XrayValidationReportHelp>
with specific help available everywhere you see the ⓘ symbol.

The following versions of software and data (see [references ⓘ](#)) were used in the production of this report:

MolProbity : 4.02b-467
Mogul : 1.7 (RC4), CSD as536be (2015)
Xtriage (Phenix) : **NOT EXECUTED**
EDS : **NOT EXECUTED**
Percentile statistics : 20151230.v01 (using entries in the PDB archive December 30th 2015)
Ideal geometry (proteins) : Engh & Huber (2001)
Ideal geometry (DNA, RNA) : Parkinson et al. (1996)
Validation Pipeline (wwPDB-VP) : trunk26865

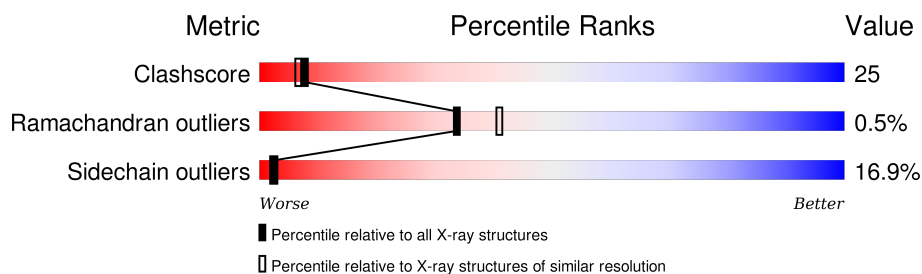
1 Overall quality at a glance

The following experimental techniques were used to determine the structure:

X-RAY DIFFRACTION

The reported resolution of this entry is 2.30 Å.



Percentile scores (ranging between 0-100) for global validation metrics of the entry are shown in the following graphic. The table shows the number of entries on which the scores are based.



Metric	Whole archive (#Entries)	Similar resolution (#Entries, resolution range(Å))
Clashscore	102246	4452 (2.30-2.30)
Ramachandran outliers	100387	4410 (2.30-2.30)
Sidechain outliers	100360	4409 (2.30-2.30)

The table below summarises the geometric issues observed across the polymeric chains and their fit to the electron density. The red, orange, yellow and green segments on the lower bar indicate the fraction of residues that contain outliers for ≥ 3 , 2, 1 and 0 types of geometric quality criteria. A grey segment represents the fraction of residues that are not modelled. The numeric value for each fraction is indicated below the corresponding segment, with a dot representing fractions $\leq 5\%$. The upper red bar (where present) indicates the fraction of residues that have poor fit to the electron density. The numeric value is given above the bar.

Note EDS was not executed.

Mol	Chain	Length	Quality of chain
1	A	99	
1	B	99	

2 Entry composition [i](#)

There are 3 unique types of molecules in this entry. The entry contains 1689 atoms, of which 0 are hydrogens and 0 are deuteriums.

In the tables below, the ZeroOcc column contains the number of atoms modelled with zero occupancy, the AltConf column contains the number of residues with at least one atom in alternate conformation and the Trace column contains the number of residues modelled with at most 2 atoms.

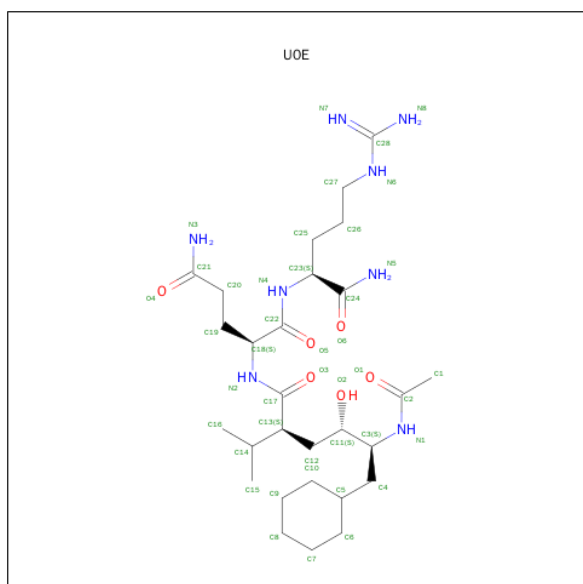
- Molecule 1 is a protein called HIV-1 PROTEASE.

Mol	Chain	Residues	Atoms					ZeroOcc	AltConf	Trace
1	A	99	Total	C	N	O	S	0	0	0
			759	488	131	136	4			
1	B	99	Total	C	N	O	S	0	0	0
			759	488	131	136	4			

There are 2 discrepancies between the modelled and reference sequences:

Chain	Residue	Modelled	Actual	Comment	Reference
A	82	ASN	VAL	ENGINEERED	UNP P03368
B	82	ASN	VAL	ENGINEERED	UNP P03368

- Molecule 2 is N-[[1-[N-ACETAMIDYL]-[1-CYCLOHEXYLMETHYL-2-HYDROXY-4-ISOPROPYL]-BUT-4-YL]-CARBONYL]-GLUTAMINYL-ARGINYL-AMIDE (three-letter code: UOE) (formula: C₂₈H₅₂N₈O₆).



Mol	Chain	Residues	Atoms				ZeroOcc	AltConf
2	A	2	Total	C	N	O	0	0
			84	56	16	12		

- Molecule 3 is water.

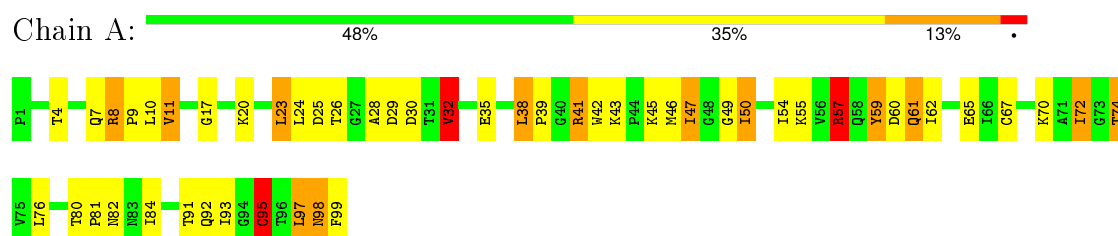
Mol	Chain	Residues	Atoms		ZeroOcc	AltConf
3	A	52	Total	O	0	0
			52	52		
3	B	35	Total	O	0	0
			35	35		

3 Residue-property plots

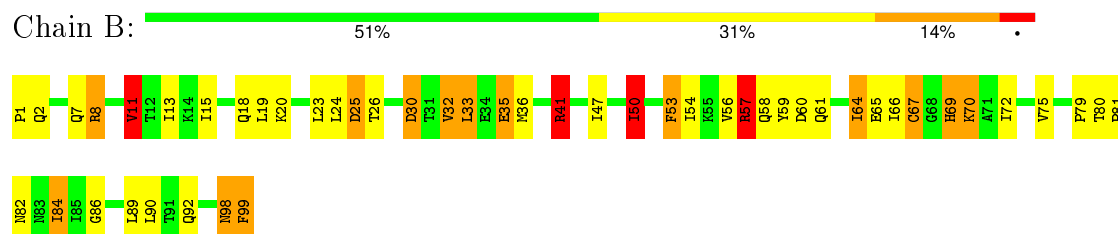
These plots are drawn for all protein, RNA and DNA chains in the entry. The first graphic for a chain summarises the proportions of errors displayed in the second graphic. The second graphic shows the sequence view annotated by issues in geometry and electron density. Residues are color-coded according to the number of geometric quality criteria for which they contain at least one outlier: green = 0, yellow = 1, orange = 2 and red = 3 or more. A red dot above a residue indicates a poor fit to the electron density ($RSRZ > 2$). Stretches of 2 or more consecutive residues without any outlier are shown as a green connector. Residues present in the sample, but not in the model, are shown in grey.

Note EDS was not executed.

• Molecule 1: HIV-1 PROTEASE



• Molecule 1: HIV-1 PROTEASE



4 Data and refinement statistics

Xtriage (Phenix) and EDS were not executed - this section will therefore be incomplete.

Property	Value	Source
Space group	P 61	Depositor
Cell constants a, b, c, α , β , γ	63.26 Å 63.26 Å 83.68 Å 90.00° 90.00° 120.00°	Depositor
Resolution (Å)	8.00 – 2.30	Depositor
% Data completeness (in resolution range)	97.0 (8.00-2.30)	Depositor
R_{merge}	0.04	Depositor
R_{sym}	(Not available)	Depositor
Refinement program	PROLSQ	Depositor
R, R_{free}	0.183 , (Not available)	Depositor
Estimated twinning fraction	No twinning to report.	Xtriage
Total number of atoms	1689	wwPDB-VP
Average B, all atoms (Å ²)	20.0	wwPDB-VP

5 Model quality

5.1 Standard geometry

Bond lengths and bond angles in the following residue types are not validated in this section: U0E

The Z score for a bond length (or angle) is the number of standard deviations the observed value is removed from the expected value. A bond length (or angle) with $|Z| > 5$ is considered an outlier worth inspection. RMSZ is the root-mean-square of all Z scores of the bond lengths (or angles).

Mol	Chain	Bond lengths		Bond angles	
		RMSZ	# Z >5	RMSZ	# Z >5
1	A	0.71	0/772	2.04	29/1044 (2.8%)
1	B	0.72	0/772	2.15	30/1044 (2.9%)
All	All	0.72	0/1544	2.09	59/2088 (2.8%)

Chiral center outliers are detected by calculating the chiral volume of a chiral center and verifying if the center is modelled as a planar moiety or with the opposite hand. A planarity outlier is detected by checking planarity of atoms in a peptide group, atoms in a mainchain group or atoms of a sidechain that are expected to be planar.

Mol	Chain	#Chirality outliers	#Planarity outliers
1	A	0	1
1	B	0	3
All	All	0	4

There are no bond length outliers.

All (59) bond angle outliers are listed below:

Mol	Chain	Res	Type	Atoms	Z	Observed(°)	Ideal(°)
1	B	8	ARG	NE-CZ-NH1	13.46	127.03	120.30
1	A	41	ARG	NE-CZ-NH1	12.27	126.43	120.30
1	A	8	ARG	NE-CZ-NH2	10.29	125.45	120.30
1	B	59	TYR	CB-CG-CD1	8.64	126.19	121.00
1	A	29	ASP	CB-CG-OD2	-8.40	110.74	118.30
1	A	59	TYR	CB-CG-CD2	-8.38	115.97	121.00
1	B	25	ASP	CB-CG-OD1	8.20	125.68	118.30
1	B	98	ASN	CA-CB-CG	-7.90	96.02	113.40
1	B	30	ASP	CB-CA-C	-7.79	94.81	110.40
1	A	50	ILE	CA-C-N	7.58	131.35	116.20
1	B	30	ASP	CB-CG-OD1	-7.50	111.55	118.30
1	B	7	GLN	CB-CG-CD	7.44	130.94	111.60

Continued on next page...

Continued from previous page...

Mol	Chain	Res	Type	Atoms	Z	Observed(°)	Ideal(°)
1	A	59	TYR	CB-CG-CD1	7.21	125.33	121.00
1	B	50	ILE	N-CA-CB	-7.17	94.31	110.80
1	A	25	ASP	CB-CG-OD1	7.13	124.72	118.30
1	B	57	ARG	NE-CZ-NH2	7.13	123.86	120.30
1	B	98	ASN	CB-CA-C	-7.05	96.31	110.40
1	B	33	LEU	CA-CB-CG	6.96	131.31	115.30
1	A	97	LEU	CA-CB-CG	6.82	130.99	115.30
1	B	32	VAL	CG1-CB-CG2	-6.49	100.52	110.90
1	B	8	ARG	NH1-CZ-NH2	-6.45	112.31	119.40
1	A	95	CYS	CB-CA-C	6.40	123.21	110.40
1	A	41	ARG	CD-NE-CZ	6.37	132.52	123.60
1	B	99	PHE	CA-CB-CG	6.25	128.89	113.90
1	B	60	ASP	CB-CG-OD2	6.23	123.91	118.30
1	A	30	ASP	CB-CG-OD1	6.21	123.89	118.30
1	B	59	TYR	CB-CG-CD2	-6.18	117.29	121.00
1	B	41	ARG	NE-CZ-NH2	6.10	123.35	120.30
1	B	53	PHE	CA-CB-CG	6.09	128.52	113.90
1	B	84	ILE	CB-CA-C	-6.05	99.50	111.60
1	A	65	GLU	OE1-CD-OE2	5.92	130.40	123.30
1	A	57	ARG	NE-CZ-NH2	5.85	123.22	120.30
1	B	11	VAL	N-CA-CB	-5.82	98.69	111.50
1	A	25	ASP	O-C-N	-5.82	113.39	122.70
1	A	97	LEU	CB-CA-C	5.77	121.16	110.20
1	A	43	LYS	CA-CB-CG	5.70	125.94	113.40
1	B	69	HIS	CB-CA-C	-5.70	99.00	110.40
1	B	98	ASN	OD1-CG-ND2	5.64	134.86	121.90
1	A	91	THR	CA-CB-CG2	-5.60	104.56	112.40
1	B	61	GLN	O-C-N	-5.56	113.80	122.70
1	B	53	PHE	CB-CA-C	-5.55	99.30	110.40
1	A	74	THR	CA-CB-OG1	-5.52	97.40	109.00
1	B	26	THR	CA-C-N	5.50	127.20	116.20
1	A	11	VAL	CB-CA-C	5.44	121.74	111.40
1	B	30	ASP	CB-CG-OD2	5.39	123.15	118.30
1	B	25	ASP	OD1-CG-OD2	-5.15	113.51	123.30
1	B	50	ILE	CA-C-N	5.14	126.48	116.20
1	B	57	ARG	NE-CZ-NH1	-5.14	117.73	120.30
1	A	72	ILE	CB-CG1-CD1	-5.13	99.54	113.90
1	A	60	ASP	CB-CG-OD2	5.12	122.91	118.30
1	A	10	LEU	CB-CG-CD1	-5.11	102.31	111.00
1	A	72	ILE	CB-CA-C	5.06	121.72	111.60
1	A	4	THR	N-CA-CB	5.05	119.90	110.30
1	A	93	ILE	C-N-CA	5.05	132.91	122.30

Continued on next page...

Continued from previous page...

Mol	Chain	Res	Type	Atoms	Z	Observed(°)	Ideal(°)
1	A	32	VAL	CB-CA-C	5.04	120.98	111.40
1	A	72	ILE	CG1-CB-CG2	-5.04	100.31	111.40
1	B	11	VAL	CB-CA-C	5.03	120.95	111.40
1	A	17	GLY	O-C-N	-5.02	114.67	122.70
1	A	41	ARG	NH1-CZ-NH2	-5.01	113.89	119.40

There are no chirality outliers.

All (4) planarity outliers are listed below:

Mol	Chain	Res	Type	Group
1	A	57	ARG	Sidechain
1	B	41	ARG	Sidechain
1	B	57	ARG	Sidechain
1	B	8	ARG	Sidechain

5.2 Too-close contacts

In the following table, the Non-H and H(model) columns list the number of non-hydrogen atoms and hydrogen atoms in the chain respectively. The H(added) column lists the number of hydrogen atoms added and optimized by MolProbity. The Clashes column lists the number of clashes within the asymmetric unit, whereas Symm-Clashes lists symmetry related clashes.

Mol	Chain	Non-H	H(model)	H(added)	Clashes	Symm-Clashes
1	A	759	0	803	49	0
1	B	759	0	803	41	0
2	A	84	0	61	30	0
3	A	52	0	0	3	0
3	B	35	0	0	4	0
All	All	1689	0	1667	82	0

The all-atom clashscore is defined as the number of clashes found per 1000 atoms (including hydrogen atoms). The all-atom clashscore for this structure is 25.

All (82) close contacts within the same asymmetric unit are listed below, sorted by their clash magnitude.

Atom-1	Atom-2	Interatomic distance (Å)	Clash overlap (Å)
1:A:49:GLY:HA3	1:B:50:ILE:HG22	1.41	0.98
2:A:100:U0E:H91	1:B:81:PRO:HG2	1.42	0.97
1:A:81:PRO:CG	2:A:101:U0E:H91	1.95	0.96

Continued on next page...

Continued from previous page...

Atom-1	Atom-2	Interatomic distance (Å)	Clash overlap (Å)
1:A:81:PRO:HG2	2:A:101:U0E:H91	1.51	0.93
1:A:49:GLY:HA3	1:B:50:ILE:CG2	2.00	0.90
1:A:95:CYS:HB2	1:B:99:PHE:HB3	1.58	0.85
1:A:82:ASN:HB2	2:A:101:U0E:H81	1.60	0.83
1:A:98:ASN:HD22	1:B:2:GLN:HG3	1.43	0.83
2:A:100:U0E:C9	1:B:81:PRO:HG2	2.09	0.82
1:A:81:PRO:HG2	2:A:101:U0E:C9	2.10	0.81
1:A:81:PRO:HG2	2:A:101:U0E:C8	2.12	0.80
1:A:50:ILE:HD12	1:B:81:PRO:HD2	1.69	0.75
1:B:32:VAL:HG12	1:B:84:ILE:HD12	1.71	0.73
1:A:59:TYR:HB3	1:A:62:ILE:HD11	1.69	0.72
1:A:8:ARG:HH12	2:A:100:U0E:HN81	1.38	0.71
2:A:100:U0E:H71	1:B:82:ASN:OD1	1.89	0.71
1:A:50:ILE:HD11	1:B:80:THR:OG1	1.90	0.71
1:A:98:ASN:ND2	1:B:2:GLN:HG3	2.08	0.68
1:B:33:LEU:HD23	1:B:75:VAL:HG13	1.78	0.65
1:A:84:ILE:HD11	2:A:101:U0E:H102	1.79	0.64
2:A:101:U0E:O3	2:A:101:U0E:H152	1.95	0.64
1:B:65:GLU:HG2	1:B:70:LYS:HG2	1.78	0.64
2:A:100:U0E:C8	2:A:101:U0E:C16	2.35	0.63
1:A:32:VAL:HA	1:A:76:LEU:O	2.00	0.62
1:B:13:ILE:HA	1:B:65:GLU:O	2.01	0.60
1:A:81:PRO:CG	2:A:101:U0E:C9	2.73	0.59
1:A:81:PRO:HG3	2:A:101:U0E:H91	1.83	0.59
1:A:8:ARG:NH1	2:A:100:U0E:HN81	1.99	0.59
1:B:72:ILE:H	1:B:92:GLN:HE22	1.51	0.58
1:A:47:ILE:HD11	1:A:54:ILE:HD11	1.85	0.58
1:A:61:GLN:NE2	1:A:72:ILE:HG12	2.19	0.58
1:A:47:ILE:HG21	2:A:101:U0E:N3	2.20	0.56
2:A:101:U0E:O3	2:A:101:U0E:C15	2.54	0.56
2:A:100:U0E:O4	1:B:30:ASP:HB2	2.06	0.55
1:B:13:ILE:HG22	1:B:66:ILE:HA	1.87	0.55
1:B:20:LYS:HE3	1:B:36:MET:SD	2.46	0.55
1:A:47:ILE:CG2	2:A:101:U0E:N3	2.70	0.54
2:A:101:U0E:O6	2:A:101:U0E:N3	2.40	0.54
1:B:32:VAL:HG12	1:B:84:ILE:CD1	2.38	0.53
1:A:46:MET:HA	1:A:54:ILE:O	2.09	0.52
1:B:64:ILE:HD11	1:B:75:VAL:CG2	2.40	0.52
1:A:72:ILE:H	1:A:92:GLN:HE22	1.58	0.52
1:A:46:MET:HE3	3:A:143:HOH:O	2.10	0.52
1:B:35:GLU:HG2	3:B:109:HOH:O	2.09	0.51

Continued on next page...

Continued from previous page...

Atom-1	Atom-2	Interatomic distance (Å)	Clash overlap (Å)
1:A:9:PRO:HD2	1:A:23:LEU:CD2	2.41	0.50
1:A:50:ILE:HD13	2:A:101:U0E:C15	2.42	0.50
1:A:50:ILE:HD13	2:A:101:U0E:H151	1.94	0.49
1:A:46:MET:CE	3:A:143:HOH:O	2.60	0.49
2:A:100:U0E:C7	1:B:82:ASN:OD1	2.58	0.48
2:A:100:U0E:C8	1:B:82:ASN:OD1	2.61	0.48
1:B:15:ILE:O	1:B:18:GLN:HB2	2.13	0.48
1:B:25:ASP:HB3	1:B:84:ILE:CG2	2.43	0.47
1:A:9:PRO:HD2	1:A:23:LEU:HD21	1.96	0.47
1:A:50:ILE:CD1	1:B:81:PRO:HD2	2.43	0.47
1:B:65:GLU:HA	1:B:69:HIS:O	2.13	0.47
1:A:32:VAL:HB	1:A:76:LEU:HB2	1.95	0.47
1:A:84:ILE:CD1	1:B:50:ILE:CD1	2.93	0.47
1:B:35:GLU:OE2	1:B:57:ARG:NH1	2.48	0.47
1:A:28:ALA:HA	2:A:101:U0E:H191	1.97	0.46
1:A:47:ILE:CG2	2:A:101:U0E:HN31	2.27	0.46
1:A:8:ARG:HG2	3:B:134:HOH:O	2.16	0.46
1:B:11:VAL:HG22	1:B:67:CYS:SG	2.55	0.46
1:B:35:GLU:HB2	3:B:110:HOH:O	2.15	0.45
1:A:99:PHE:OXT	1:B:1:PRO:HD2	2.15	0.45
1:B:32:VAL:CG1	1:B:84:ILE:HD12	2.44	0.45
1:A:26:THR:HG21	1:A:97:LEU:HD22	1.99	0.44
1:B:54:ILE:HG13	1:B:56:VAL:HG13	1.97	0.44
1:B:86:GLY:O	1:B:90:LEU:HG	2.17	0.44
2:A:100:U0E:N3	1:B:47:ILE:HG21	2.32	0.44
1:A:59:TYR:O	1:A:74:THR:HA	2.18	0.44
1:A:42:TRP:CE3	1:A:57:ARG:HG2	2.52	0.44
1:B:58:GLN:NE2	3:B:126:HOH:O	2.51	0.43
1:A:42:TRP:CE3	1:A:57:ARG:HB3	2.53	0.43
1:A:80:THR:OG1	1:B:50:ILE:HD11	2.19	0.42
1:A:38:LEU:HD12	1:A:39:PRO:HD2	2.02	0.42
1:A:35:GLU:HB2	3:A:130:HOH:O	2.19	0.41
1:A:50:ILE:CD1	2:A:101:U0E:H151	2.50	0.41
1:A:8:ARG:HD3	1:A:23:LEU:HD11	2.03	0.41
1:A:84:ILE:HD12	1:B:50:ILE:CD1	2.51	0.41
2:A:100:U0E:HN31	1:B:47:ILE:HG21	1.86	0.41
2:A:100:U0E:H152	2:A:101:U0E:H92	1.68	0.41
1:A:98:ASN:OD1	1:B:98:ASN:ND2	2.46	0.40

There are no symmetry-related clashes.

5.3 Torsion angles [i](#)

5.3.1 Protein backbone [i](#)

In the following table, the Percentiles column shows the percent Ramachandran outliers of the chain as a percentile score with respect to all X-ray entries followed by that with respect to entries of similar resolution.

The Analysed column shows the number of residues for which the backbone conformation was analysed, and the total number of residues.

Mol	Chain	Analysed	Favoured	Allowed	Outliers	Percentiles	
1	A	97/99 (98%)	95 (98%)	2 (2%)	0	100	100
1	B	97/99 (98%)	92 (95%)	4 (4%)	1 (1%)	19	21
All	All	194/198 (98%)	187 (96%)	6 (3%)	1 (0%)	34	41

All (1) Ramachandran outliers are listed below:

Mol	Chain	Res	Type
1	B	79	PRO

5.3.2 Protein sidechains [i](#)

In the following table, the Percentiles column shows the percent sidechain outliers of the chain as a percentile score with respect to all X-ray entries followed by that with respect to entries of similar resolution.

The Analysed column shows the number of residues for which the sidechain conformation was analysed, and the total number of residues.

Mol	Chain	Analysed	Rotameric	Outliers	Percentiles	
1	A	83/83 (100%)	67 (81%)	16 (19%)	2	1
1	B	83/83 (100%)	71 (86%)	12 (14%)	4	3
All	All	166/166 (100%)	138 (83%)	28 (17%)	2	2

All (28) residues with a non-rotameric sidechain are listed below:

Mol	Chain	Res	Type
1	A	7	GLN
1	A	11	VAL
1	A	20	LYS
1	A	23	LEU
1	A	24	LEU

Continued on next page...

Continued from previous page...

Mol	Chain	Res	Type
1	A	32	VAL
1	A	38	LEU
1	A	41	ARG
1	A	45	LYS
1	A	47	ILE
1	A	55	LYS
1	A	61	GLN
1	A	67	CYS
1	A	70	LYS
1	A	95	CYS
1	A	98	ASN
1	B	11	VAL
1	B	19	LEU
1	B	23	LEU
1	B	24	LEU
1	B	35	GLU
1	B	41	ARG
1	B	50	ILE
1	B	53	PHE
1	B	64	ILE
1	B	67	CYS
1	B	70	LYS
1	B	89	LEU

Some sidechains can be flipped to improve hydrogen bonding and reduce clashes. All (6) such sidechains are listed below:

Mol	Chain	Res	Type
1	A	7	GLN
1	A	61	GLN
1	A	92	GLN
1	B	18	GLN
1	B	58	GLN
1	B	92	GLN

5.3.3 RNA ⓘ

There are no RNA molecules in this entry.

5.4 Non-standard residues in protein, DNA, RNA chains ⓘ

There are no non-standard protein/DNA/RNA residues in this entry.

5.5 Carbohydrates ⓘ

There are no carbohydrates in this entry.

5.6 Ligand geometry ⓘ

2 ligands are modelled in this entry.

In the following table, the Counts columns list the number of bonds (or angles) for which Mogul statistics could be retrieved, the number of bonds (or angles) that are observed in the model and the number of bonds (or angles) that are defined in the chemical component dictionary. The Link column lists molecule types, if any, to which the group is linked. The Z score for a bond length (or angle) is the number of standard deviations the observed value is removed from the expected value. A bond length (or angle) with $|Z| > 2$ is considered an outlier worth inspection. RMSZ is the root-mean-square of all Z scores of the bond lengths (or angles).

Mol	Type	Chain	Res	Link	Bond lengths			Bond angles		
					Counts	RMSZ	$\# Z > 2$	Counts	RMSZ	$\# Z > 2$
2	U0E	A	100	2	39,42,42	0.56	0	46,55,55	1.25	4 (8%)
2	U0E	A	101	2	39,42,42	0.62	0	46,55,55	1.27	4 (8%)

In the following table, the Chirals column lists the number of chiral outliers, the number of chiral centers analysed, the number of these observed in the model and the number defined in the chemical component dictionary. Similar counts are reported in the Torsion and Rings columns. '-' means no outliers of that kind were identified.

Mol	Type	Chain	Res	Link	Chirals	Torsions	Rings
2	U0E	A	100	2	-	0/50/60/60	0/1/1/1
2	U0E	A	101	2	-	0/50/60/60	0/1/1/1

There are no bond length outliers.

All (8) bond angle outliers are listed below:

Mol	Chain	Res	Type	Atoms	Z	Observed(°)	Ideal(°)
2	A	101	U0E	O6-C24-N5	-3.37	118.09	123.08
2	A	100	U0E	O6-C24-N5	-3.30	118.19	123.08
2	A	101	U0E	C13-C17-N2	-2.25	113.30	116.08
2	A	100	U0E	C13-C17-N2	-2.05	113.56	116.08
2	A	101	U0E	C23-C24-N5	2.53	120.69	116.60

Continued on next page...

Continued from previous page...

Mol	Chain	Res	Type	Atoms	Z	Observed(°)	Ideal(°)
2	A	100	UOE	C23-C24-N5	2.66	120.89	116.60
2	A	101	UOE	C13-C12-C11	4.77	122.42	114.32
2	A	100	UOE	C13-C12-C11	4.90	122.63	114.32

There are no chirality outliers.

There are no torsion outliers.

There are no ring outliers.

2 monomers are involved in 30 short contacts:

Mol	Chain	Res	Type	Clashes	Symm-Clashes
2	A	100	UOE	12	0
2	A	101	UOE	20	0

5.7 Other polymers [i](#)

There are no such residues in this entry.

5.8 Polymer linkage issues [i](#)

There are no chain breaks in this entry.

6 Fit of model and data [i](#)

6.1 Protein, DNA and RNA chains [i](#)

EDS was not executed - this section will therefore be empty.

6.2 Non-standard residues in protein, DNA, RNA chains [i](#)

EDS was not executed - this section will therefore be empty.

6.3 Carbohydrates [i](#)

EDS was not executed - this section will therefore be empty.

6.4 Ligands [i](#)

EDS was not executed - this section will therefore be empty.

6.5 Other polymers [i](#)

EDS was not executed - this section will therefore be empty.