



Full wwPDB X-ray Structure Validation Report ⓘ

Feb 1, 2016 – 04:57 PM GMT

PDB ID : 4GRH
Title : Crystal structure of pabB of *Stenotrophomonas maltophilia*
Authors : Bera, A.; Atanasova, V.; Ladner, J.E.; Parsons, J.F.
Deposited on : 2012-08-24
Resolution : 2.25 Å(reported)

This is a Full wwPDB X-ray Structure Validation Report for a publicly released PDB entry.
We welcome your comments at validation@mail.wwpdb.org
A user guide is available at
<http://wwpdb.org/validation/2016/XrayValidationReportHelp>
with specific help available everywhere you see the ⓘ symbol.

The following versions of software and data (see [references ⓘ](#)) were used in the production of this report:

MolProbity : 4.02b-467
Mogul : 1.7 (RC4), CSD as536be (2015)
Xtriage (Phenix) : 1.9-1692
EDS : rb-20026688
Percentile statistics : 20151230.v01 (using entries in the PDB archive December 30th 2015)
Refmac : 5.8.0135
CCP4 : 6.5.0
Ideal geometry (proteins) : Engh & Huber (2001)
Ideal geometry (DNA, RNA) : Parkinson et al. (1996)
Validation Pipeline (wwPDB-VP) : trunk26865

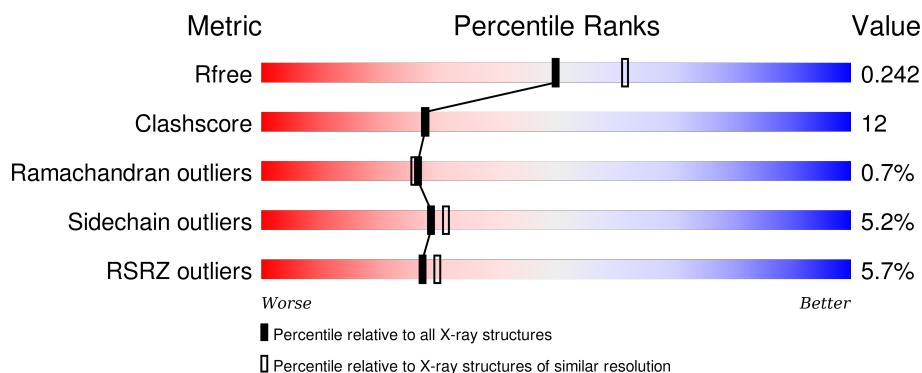
1 Overall quality at a glance

The following experimental techniques were used to determine the structure:

X-RAY DIFFRACTION


The reported resolution of this entry is 2.25 Å.

Percentile scores (ranging between 0-100) for global validation metrics of the entry are shown in the following graphic. The table shows the number of entries on which the scores are based.



Metric	Whole archive (#Entries)	Similar resolution (#Entries, resolution range(Å))
R_{free}	91344	1640 (2.28-2.24)
Clashscore	102246	1095 (2.26-2.26)
Ramachandran outliers	100387	1063 (2.26-2.26)
Sidechain outliers	100360	1063 (2.26-2.26)
RSRZ outliers	91569	1647 (2.28-2.24)

The table below summarises the geometric issues observed across the polymeric chains and their fit to the electron density. The red, orange, yellow and green segments on the lower bar indicate the fraction of residues that contain outliers for ≥ 3 , 2, 1 and 0 types of geometric quality criteria. A grey segment represents the fraction of residues that are not modelled. The numeric value for each fraction is indicated below the corresponding segment, with a dot representing fractions $\leq 5\%$. The upper red bar (where present) indicates the fraction of residues that have poor fit to the electron density. The numeric value is given above the bar.

Mol	Chain	Length	Quality of chain
1	A	457	

The following table lists non-polymeric compounds, carbohydrate monomers and non-standard residues in protein, DNA, RNA chains that are outliers for geometric or electron-density-fit criteria:

Mol	Type	Chain	Res	Chirality	Geometry	Clashes	Electron density
2	15P	A	502	-	-	-	X

Continued on next page...

Continued from previous page...

Mol	Type	Chain	Res	Chirality	Geometry	Clashes	Electron density
3	CPS	A	505	-	-	-	X

2 Entry composition [i](#)

There are 5 unique types of molecules in this entry. The entry contains 3761 atoms, of which 0 are hydrogens and 0 are deuteriums.

In the tables below, the ZeroOcc column contains the number of atoms modelled with zero occupancy, the AltConf column contains the number of residues with at least one atom in alternate conformation and the Trace column contains the number of residues modelled with at most 2 atoms.

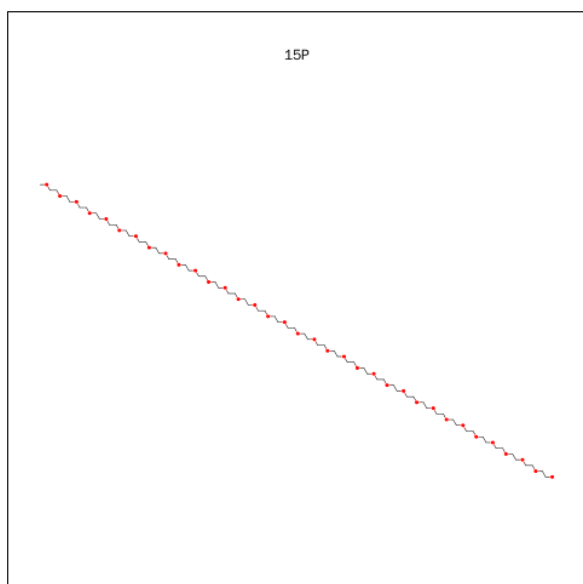
- Molecule 1 is a protein called aminodeoxychorismate synthase.

Mol	Chain	Residues	Atoms					ZeroOcc	AltConf	Trace
1	A	438	Total	C	N	O	S	0	10	0
			3427	2140	641	637	9			

There are 4 discrepancies between the modelled and reference sequences:

Chain	Residue	Modelled	Actual	Comment	Reference
A	-2	GLY	-	EXPRESSION TAG	UNP B2FR92
A	-1	SER	-	EXPRESSION TAG	UNP B2FR92
A	0	HIS	-	EXPRESSION TAG	UNP B2FR92
A	1	GLY	-	EXPRESSION TAG	UNP B2FR92

- Molecule 2 is POLYETHYLENE GLYCOL (N=34) (three-letter code: 15P) (formula: C₆₉H₁₄₀O₃₅).



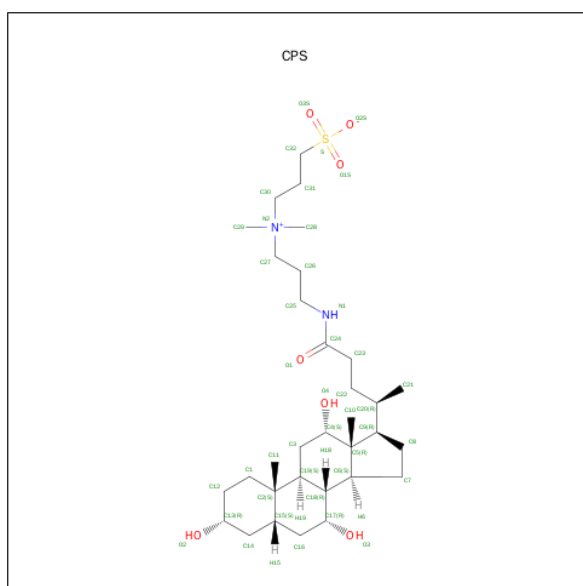
Mol	Chain	Residues	Atoms			ZeroOcc	AltConf
2	A	1	Total	C	O	0	0
			8	5	3		

Continued on next page...

Continued from previous page...

Mol	Chain	Residues	Atoms			ZeroOcc	AltConf
2	A	1	Total	C	O	0	0
			8	5	3		
2	A	1	Total	C	O	0	0
			10	6	4		
2	A	1	Total	C	O	0	0
			10	6	4		

- Molecule 3 is 3-[(3-CHOLAMIDOPROPYL)DIMETHYLAMMONIO]-1-PROPANESULFO NATE (three-letter code: CPS) (formula: C₃₂H₅₈N₂O₇S).



Mol	Chain	Residues	Atoms				ZeroOcc	AltConf
3	A	1	Total	C	N	O	0	0
			36	30	2	4		
3	A	1	Total	C	N	O	0	0
			29	24	1	4		

- Molecule 4 is MAGNESIUM ION (three-letter code: MG) (formula: Mg).

Mol	Chain	Residues	Atoms		ZeroOcc	AltConf
4	A	1	Total	Mg	0	0
			1	1		

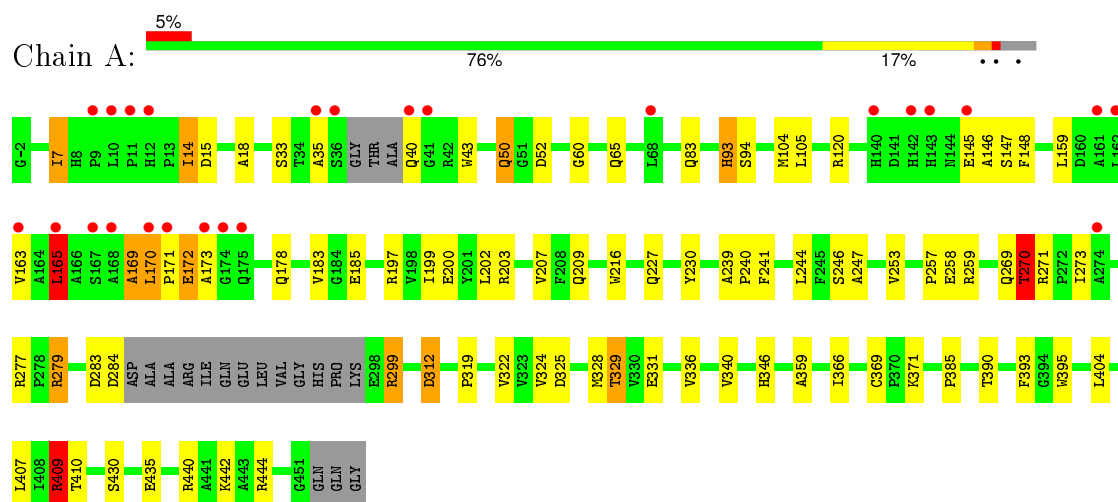
- Molecule 5 is water.

Mol	Chain	Residues	Atoms		ZeroOcc	AltConf
5	A	232	Total 232	O 232	0	0

3 Residue-property plots [i](#)

These plots are drawn for all protein, RNA and DNA chains in the entry. The first graphic for a chain summarises the proportions of errors displayed in the second graphic. The second graphic shows the sequence view annotated by issues in geometry and electron density. Residues are color-coded according to the number of geometric quality criteria for which they contain at least one outlier: green = 0, yellow = 1, orange = 2 and red = 3 or more. A red dot above a residue indicates a poor fit to the electron density ($\text{RSRZ} > 2$). Stretches of 2 or more consecutive residues without any outlier are shown as a green connector. Residues present in the sample, but not in the model, are shown in grey.

- Molecule 1: aminodeoxychorismate synthase



4 Data and refinement statistics

Property	Value	Source
Space group	P 63 2 2	Depositor
Cell constants a, b, c, α , β , γ	161.30 Å 161.30 Å 116.09 Å 90.00° 90.00° 120.00°	Depositor
Resolution (Å)	46.57 – 2.25 44.64 – 2.25	Depositor EDS
% Data completeness (in resolution range)	99.9 (46.57-2.25) 99.9 (44.64-2.25)	Depositor EDS
R_{merge}	0.06	Depositor
R_{sym}	(Not available)	Depositor
$\langle I/\sigma(I) \rangle$ ¹	5.21 (at 2.24 Å)	Xtriage
Refinement program	REFMAC 5.6.0117	Depositor
R, R_{free}	0.194 , 0.240 0.195 , 0.242	Depositor DCC
R_{free} test set	2150 reflections (5.32%)	DCC
Wilson B-factor (Å ²)	41.1	Xtriage
Anisotropy	0.007	Xtriage
Bulk solvent k_{sol} (e/Å ³), B_{sol} (Å ²)	0.33 , 52.7	EDS
Estimated twinning fraction	No twinning to report.	Xtriage
L-test for twinning ²	$\langle L \rangle = 0.50$, $\langle L^2 \rangle = 0.33$	Xtriage
Outliers	0 of 42546 reflections	Xtriage
F_o, F_c correlation	0.95	EDS
Total number of atoms	3761	wwPDB-VP
Average B, all atoms (Å ²)	48.0	wwPDB-VP

Xtriage's analysis on translational NCS is as follows: *The largest off-origin peak in the Patterson function is 2.41% of the height of the origin peak. No significant pseudotranslation is detected.*

¹Intensities estimated from amplitudes.

²Theoretical values of $\langle |L| \rangle$, $\langle L^2 \rangle$ for acentric reflections are 0.5, 0.375 respectively for untwinned datasets, and 0.333, 0.2 for perfectly twinned datasets.

5 Model quality

5.1 Standard geometry

Bond lengths and bond angles in the following residue types are not validated in this section: 15P, MG, CPS

The Z score for a bond length (or angle) is the number of standard deviations the observed value is removed from the expected value. A bond length (or angle) with $|Z| > 5$ is considered an outlier worth inspection. RMSZ is the root-mean-square of all Z scores of the bond lengths (or angles).

Mol	Chain	Bond lengths		Bond angles	
		RMSZ	$\# Z > 5$	RMSZ	$\# Z > 5$
1	A	0.97	4/3522 (0.1%)	1.02	12/4795 (0.3%)

All (4) bond length outliers are listed below:

Mol	Chain	Res	Type	Atoms	Z	Observed(Å)	Ideal(Å)
1	A	216	TRP	CD2-CE2	6.21	1.48	1.41
1	A	43	TRP	CD2-CE2	5.38	1.47	1.41
1	A	395	TRP	CD2-CE2	5.36	1.47	1.41
1	A	270	THR	CB-CG2	-5.33	1.34	1.52

All (12) bond angle outliers are listed below:

Mol	Chain	Res	Type	Atoms	Z	Observed(°)	Ideal(°)
1	A	409	ARG	NE-CZ-NH2	-11.85	114.38	120.30
1	A	444	ARG	NE-CZ-NH1	8.17	124.38	120.30
1	A	409	ARG	NE-CZ-NH1	7.64	124.12	120.30
1	A	279	ARG	NE-CZ-NH2	-7.41	116.60	120.30
1	A	165	LEU	CA-CB-CG	6.38	129.97	115.30
1	A	312	ASP	CB-CG-OD1	6.03	123.73	118.30
1	A	279	ARG	NE-CZ-NH1	5.78	123.19	120.30
1	A	444	ARG	NE-CZ-NH2	-5.67	117.46	120.30
1	A	328	MET	CG-SD-CE	5.67	109.27	100.20
1	A	325	ASP	CB-CG-OD1	5.49	123.24	118.30
1	A	312	ASP	CB-CG-OD2	-5.37	113.47	118.30
1	A	371	LYS	CD-CE-NZ	-5.01	100.17	111.70

There are no chirality outliers.

There are no planarity outliers.

5.2 Too-close contacts ⓘ

In the following table, the Non-H and H(model) columns list the number of non-hydrogen atoms and hydrogen atoms in the chain respectively. The H(added) column lists the number of hydrogen atoms added and optimized by MolProbity. The Clashes column lists the number of clashes within the asymmetric unit, whereas Symm-Clashes lists symmetry related clashes.

Mol	Chain	Non-H	H(model)	H(added)	Clashes	Symm-Clashes
1	A	3427	0	3349	75	0
2	A	36	0	44	11	0
3	A	65	0	91	7	0
4	A	1	0	0	0	0
5	A	232	0	0	11	0
All	All	3761	0	3484	83	0

The all-atom clashscore is defined as the number of clashes found per 1000 atoms (including hydrogen atoms). The all-atom clashscore for this structure is 12.

All (83) close contacts within the same asymmetric unit are listed below, sorted by their clash magnitude.

Atom-1	Atom-2	Interatomic distance (Å)	Clash overlap (Å)
3:A:505:CPS:H21B	3:A:505:CPS:H10B	1.48	0.96
1:A:409:ARG:HH22	2:A:504:15P:C1	1.85	0.89
1:A:283[A]:ASP:O	1:A:283[A]:ASP:CG	2.10	0.88
1:A:407:LEU:HB3	1:A:410[B]:THR:HG21	1.57	0.85
1:A:18:ALA:HA	1:A:173:ALA:HB2	1.58	0.84
1:A:409:ARG:HH22	2:A:504:15P:H11	1.42	0.82
1:A:331[A]:GLU:HG3	1:A:336:VAL:HG22	1.65	0.77
1:A:366:ILE:HD13	1:A:390:THR:HB	1.68	0.74
3:A:505:CPS:C21	3:A:505:CPS:H10B	2.19	0.71
1:A:145:GLU:HA	1:A:145:GLU:OE1	1.90	0.70
1:A:60:GLY:HA2	2:A:502:15P:H23	1.72	0.69
1:A:93:HIS:CD2	1:A:93:HIS:N	2.61	0.68
1:A:442:LYS:HD3	2:A:504:15P:H11	1.77	0.67
1:A:409:ARG:HH22	2:A:504:15P:H21	1.61	0.65
3:A:505:CPS:C10	3:A:505:CPS:C21	2.77	0.63
1:A:14:ILE:HG12	1:A:15:ASP:H	1.62	0.63
1:A:442:LYS:NZ	2:A:504:15P:H23	2.14	0.62
1:A:83[B]:GLN:CG	5:A:715:HOH:O	2.48	0.61
1:A:159:LEU:O	1:A:163:VAL:HG23	2.01	0.61
1:A:230:TYR:HD1	1:A:253:VAL:HG13	1.66	0.61
1:A:270:THR:HG23	5:A:720:HOH:O	1.99	0.61
1:A:284:ASP:HA	5:A:671:HOH:O	2.00	0.61

Continued on next page...

Continued from previous page...

Atom-1	Atom-2	Interatomic distance (Å)	Clash overlap (Å)
2:A:503:15P:H15	5:A:698:HOH:O	2.01	0.60
1:A:227:GLN:OE1	5:A:677:HOH:O	2.17	0.60
1:A:407:LEU:HB3	1:A:410[B]:THR:CG2	2.31	0.59
1:A:279:ARG:HG2	1:A:329:THR:HG21	1.85	0.58
1:A:185:GLU:OE2	1:A:440:ARG:NH1	2.36	0.58
1:A:202:LEU:HD23	1:A:207:VAL:HG23	1.85	0.58
1:A:442:LYS:NZ	2:A:504:15P:H12	2.18	0.57
1:A:7[A]:ILE:O	1:A:7[A]:ILE:HG23	2.05	0.56
1:A:279:ARG:HA	1:A:329:THR:HG22	1.88	0.56
1:A:346:HIS:ND1	5:A:645:HOH:O	2.33	0.56
1:A:258:GLU:OE2	1:A:273:ILE:HG12	2.06	0.55
1:A:329:THR:HG21	1:A:331[B]:GLU:OE2	2.07	0.54
1:A:442:LYS:HZ3	2:A:504:15P:H12	1.72	0.53
1:A:52:ASP:OD1	1:A:65:GLN:NE2	2.42	0.53
1:A:409:ARG:NH2	2:A:504:15P:H21	2.25	0.52
1:A:7[A]:ILE:O	1:A:7[A]:ILE:HD13	2.08	0.52
1:A:239:ALA:HB1	1:A:240:PRO:HD2	1.91	0.52
1:A:270:THR:CG2	5:A:720:HOH:O	2.58	0.51
1:A:14:ILE:HG12	1:A:15:ASP:N	2.24	0.50
1:A:440:ARG:NH2	5:A:792:HOH:O	2.45	0.50
1:A:169:ALA:HB1	1:A:171:PRO:HD3	1.93	0.49
1:A:197:ARG:NH1	1:A:197:ARG:HG3	2.28	0.49
1:A:60:GLY:CA	2:A:502:15P:H23	2.43	0.49
1:A:230:TYR:HB2	1:A:244:LEU:HD12	1.94	0.49
1:A:165:LEU:HD13	1:A:165:LEU:O	2.13	0.49
1:A:148:PHE:CD2	1:A:148:PHE:N	2.81	0.48
1:A:171:PRO:O	1:A:172:GLU:CB	2.62	0.48
1:A:83[B]:GLN:HG3	5:A:715:HOH:O	2.12	0.47
1:A:312:ASP:HA	1:A:359:ALA:O	2.14	0.47
3:A:505:CPS:O4	3:A:505:CPS:H22	2.15	0.47
1:A:170:LEU:O	1:A:171:PRO:C	2.54	0.47
1:A:369:CYS:SG	5:A:601:HOH:O	2.36	0.47
1:A:178:GLN:HG3	5:A:748:HOH:O	2.14	0.46
1:A:197:ARG:HH11	1:A:197:ARG:HG3	1.81	0.46
1:A:146:ALA:HB1	1:A:148:PHE:CZ	2.51	0.46
1:A:169:ALA:CB	1:A:171:PRO:HD3	2.46	0.46
1:A:35:ALA:HB3	1:A:40:GLN:HB2	1.98	0.46
1:A:171:PRO:O	1:A:172:GLU:HB2	2.17	0.45
1:A:329:THR:CG2	1:A:331[B]:GLU:OE2	2.64	0.45
1:A:324:VAL:HG13	1:A:340:VAL:CG1	2.47	0.44
3:A:505:CPS:H271	3:A:505:CPS:H23	2.01	0.43

Continued on next page...

Continued from previous page...

Atom-1	Atom-2	Interatomic distance (Å)	Clash overlap (Å)
1:A:120:ARG:HD3	1:A:385:PRO:HD3	2.00	0.43
3:A:505:CPS:H23A	3:A:505:CPS:H21	1.68	0.43
1:A:435:GLU:OE1	1:A:435:GLU:HA	2.19	0.43
1:A:241:PHE:O	1:A:257:PRO:HD2	2.19	0.42
1:A:169:ALA:O	1:A:170:LEU:HB2	2.20	0.42
1:A:259:ARG:NH1	1:A:271:ARG:O	2.46	0.42
1:A:269:GLN:OE1	1:A:271:ARG:HG3	2.20	0.42
1:A:50:GLN:NE2	1:A:52:ASP:OD2	2.49	0.42
1:A:197:ARG:NH1	1:A:200[A]:GLU:OE1	2.52	0.42
1:A:7[A]:ILE:C	1:A:7[A]:ILE:HD13	2.40	0.42
1:A:299:ARG:HA	1:A:299:ARG:HD3	1.78	0.42
1:A:246:SER:O	1:A:247:ALA:HB2	2.20	0.41
1:A:147:SER:C	1:A:148:PHE:CD2	2.94	0.41
1:A:409:ARG:HD3	1:A:409:ARG:HA	1.48	0.41
3:A:506:CPS:H18	3:A:506:CPS:H11	1.87	0.41
1:A:202:LEU:CD2	1:A:207:VAL:HG23	2.52	0.40
1:A:199:ILE:O	1:A:203[A]:ARG:HG3	2.21	0.40
1:A:404:LEU:HD23	1:A:404:LEU:HA	1.98	0.40
1:A:299:ARG:HH11	1:A:299:ARG:HA	1.87	0.40
1:A:104:MET:C	1:A:105:LEU:HD12	2.42	0.40

There are no symmetry-related clashes.

5.3 Torsion angles [i](#)

5.3.1 Protein backbone [i](#)

In the following table, the Percentiles column shows the percent Ramachandran outliers of the chain as a percentile score with respect to all X-ray entries followed by that with respect to entries of similar resolution.

The Analysed column shows the number of residues for which the backbone conformation was analysed, and the total number of residues.

Mol	Chain	Analysed	Favoured	Allowed	Outliers	Percentiles
1	A	442/457 (97%)	413 (93%)	26 (6%)	3 (1%)	26 26

All (3) Ramachandran outliers are listed below:

Mol	Chain	Res	Type
1	A	172	GLU

Continued on next page...

Continued from previous page...

Mol	Chain	Res	Type
1	A	170	LEU
1	A	169	ALA

5.3.2 Protein sidechains ⓘ

In the following table, the Percentiles column shows the percent sidechain outliers of the chain as a percentile score with respect to all X-ray entries followed by that with respect to entries of similar resolution.

The Analysed column shows the number of residues for which the sidechain conformation was analysed, and the total number of residues.

Mol	Chain	Analysed	Rotameric	Outliers	Percentiles	
1	A	357/360 (99%)	338 (95%)	19 (5%)	28	30

All (19) residues with a non-rotameric sidechain are listed below:

Mol	Chain	Res	Type
1	A	7[A]	ILE
1	A	7[B]	ILE
1	A	14	ILE
1	A	33	SER
1	A	50	GLN
1	A	93	HIS
1	A	94	SER
1	A	165	LEU
1	A	183	VAL
1	A	209	GLN
1	A	270	THR
1	A	277	ARG
1	A	299	ARG
1	A	319	PRO
1	A	322	VAL
1	A	329	THR
1	A	393	PHE
1	A	409	ARG
1	A	430	SER

Some sidechains can be flipped to improve hydrogen bonding and reduce clashes. All (2) such sidechains are listed below:

Mol	Chain	Res	Type
1	A	93	HIS
1	A	209	GLN

5.3.3 RNA [i](#)

There are no RNA molecules in this entry.

5.4 Non-standard residues in protein, DNA, RNA chains [i](#)

There are no non-standard protein/DNA/RNA residues in this entry.

5.5 Carbohydrates [i](#)

There are no carbohydrates in this entry.

5.6 Ligand geometry [i](#)

Of 7 ligands modelled in this entry, 1 is monoatomic - leaving 6 for Mogul analysis.

In the following table, the Counts columns list the number of bonds (or angles) for which Mogul statistics could be retrieved, the number of bonds (or angles) that are observed in the model and the number of bonds (or angles) that are defined in the chemical component dictionary. The Link column lists molecule types, if any, to which the group is linked. The Z score for a bond length (or angle) is the number of standard deviations the observed value is removed from the expected value. A bond length (or angle) with $|Z| > 2$ is considered an outlier worth inspection. RMSZ is the root-mean-square of all Z scores of the bond lengths (or angles).

Mol	Type	Chain	Res	Link	Bond lengths			Bond angles		
					Counts	RMSZ	$\# Z > 2$	Counts	RMSZ	$\# Z > 2$
2	15P	A	501	-	7,7,103	0.56	0	6,6,102	0.42	0
2	15P	A	502	-	7,7,103	0.54	0	6,6,102	0.62	0
2	15P	A	503	-	9,9,103	0.54	0	8,8,102	0.49	0
2	15P	A	504	-	9,9,103	0.61	0	8,8,102	0.93	0
3	CPS	A	505	-	39,39,45	0.95	1 (2%)	61,61,70	3.01	25 (40%)
3	CPS	A	506	-	32,32,45	0.61	0	51,51,70	1.37	8 (15%)

In the following table, the Chirals column lists the number of chiral outliers, the number of chiral centers analysed, the number of these observed in the model and the number defined in the chemical component dictionary. Similar counts are reported in the Torsion and Rings columns. '-' means no outliers of that kind were identified.

Mol	Type	Chain	Res	Link	Chirals	Torsions	Rings
2	15P	A	501	-	-	0/5/5/101	0/0/0/0
2	15P	A	502	-	-	0/5/5/101	0/0/0/0
2	15P	A	503	-	-	0/7/7/101	0/0/0/0
2	15P	A	504	-	-	0/7/7/101	0/0/0/0
3	CPS	A	505	-	-	0/17/82/90	0/4/4/4
3	CPS	A	506	-	-	0/9/74/90	0/4/4/4

All (1) bond length outliers are listed below:

Mol	Chain	Res	Type	Atoms	Z	Observed(Å)	Ideal(Å)
3	A	505	CPS	C16-C17	3.30	1.58	1.52

All (33) bond angle outliers are listed below:

Mol	Chain	Res	Type	Atoms	Z	Observed(°)	Ideal(°)
3	A	505	CPS	C30-N2-C28	-8.55	86.98	108.98
3	A	505	CPS	C29-N2-C28	-6.67	91.82	108.98
3	A	505	CPS	C28-N2-C27	-6.28	84.92	109.90
3	A	505	CPS	C10-C5-C4	-6.03	103.20	109.09
3	A	505	CPS	C19-C18-C17	-5.62	105.28	111.92
3	A	506	CPS	C9-C5-C4	-3.57	114.51	117.68
3	A	505	CPS	C5-C6-C18	-3.22	110.59	114.75
3	A	505	CPS	C11-C2-C15	-3.22	104.57	110.25
3	A	505	CPS	C25-N1-C24	-3.00	116.89	122.79
3	A	506	CPS	C11-C2-C19	-2.81	106.97	111.18
3	A	506	CPS	C5-C6-C18	-2.67	111.31	114.75
3	A	505	CPS	C2-C19-C18	-2.43	109.22	111.88
3	A	506	CPS	C2-C19-C18	-2.17	109.50	111.88
3	A	505	CPS	O2-C13-C12	-2.06	104.22	110.05
3	A	505	CPS	C29-N2-C27	2.03	117.97	109.90
3	A	506	CPS	C7-C6-C5	2.22	105.80	103.60
3	A	505	CPS	O4-C4-C5	2.22	114.72	111.11
3	A	506	CPS	C12-C1-C2	2.31	116.96	112.84
3	A	505	CPS	C9-C5-C6	2.50	102.58	100.05
3	A	505	CPS	O4-C4-C3	2.54	114.26	109.06
3	A	505	CPS	C7-C6-C18	2.67	122.19	118.32
3	A	506	CPS	C3-C4-C5	2.78	114.03	111.20
3	A	505	CPS	C22-C20-C9	2.82	116.16	110.24
3	A	505	CPS	C14-C13-C12	2.85	114.16	110.52
3	A	505	CPS	C30-N2-C27	2.87	121.32	109.90
3	A	506	CPS	C3-C19-C18	2.87	114.81	110.73
3	A	505	CPS	C1-C2-C15	3.88	114.19	107.81
3	A	505	CPS	C15-C14-C13	4.11	119.02	112.91

Continued on next page...

Continued from previous page...

Mol	Chain	Res	Type	Atoms	Z	Observed(°)	Ideal(°)
3	A	505	CPS	C6-C5-C4	4.16	111.11	107.39
3	A	505	CPS	C30-N2-C29	4.40	120.30	108.98
3	A	505	CPS	C15-C16-C17	4.72	119.70	114.44
3	A	505	CPS	C3-C19-C2	4.96	118.95	113.79
3	A	505	CPS	C6-C18-C17	8.55	123.59	111.74

There are no chirality outliers.

There are no torsion outliers.

There are no ring outliers.

5 monomers are involved in 18 short contacts:

Mol	Chain	Res	Type	Clashes	Symm-Clashes
2	A	502	15P	2	0
2	A	503	15P	1	0
2	A	504	15P	8	0
3	A	505	CPS	6	0
3	A	506	CPS	1	0

5.7 Other polymers [i](#)

There are no such residues in this entry.

5.8 Polymer linkage issues [i](#)

There are no chain breaks in this entry.

6 Fit of model and data ⓘ

6.1 Protein, DNA and RNA chains ⓘ

In the following table, the column labelled ‘#RSRZ> 2’ contains the number (and percentage) of RSRZ outliers, followed by percent RSRZ outliers for the chain as percentile scores relative to all X-ray entries and entries of similar resolution. The OWAB column contains the minimum, median, 95th percentile and maximum values of the occupancy-weighted average B-factor per residue. The column labelled ‘Q< 0.9’ lists the number of (and percentage) of residues with an average occupancy less than 0.9.

Mol	Chain	Analysed	<RSRZ>	#RSRZ>2		OWAB(Å ²)	Q<0.9
1	A	438/457 (95%)	-0.10	25 (5%)	27 30	25, 42, 86, 117	0

All (25) RSRZ outliers are listed below:

Mol	Chain	Res	Type	RSRZ
1	A	168	ALA	5.6
1	A	40	GLN	4.0
1	A	170	LEU	3.8
1	A	143	HIS	3.5
1	A	165	LEU	3.4
1	A	274	ALA	3.1
1	A	36	SER	3.0
1	A	12	HIS	2.8
1	A	145	GLU	2.8
1	A	162	LEU	2.8
1	A	173	ALA	2.8
1	A	35	ALA	2.8
1	A	142	HIS	2.7
1	A	41	GLY	2.6
1	A	175	GLN	2.5
1	A	11	PRO	2.5
1	A	167	SER	2.4
1	A	10	LEU	2.4
1	A	174	GLY	2.3
1	A	9	PRO	2.3
1	A	140	HIS	2.3
1	A	171	PRO	2.2
1	A	161	ALA	2.2
1	A	163	VAL	2.2
1	A	68	LEU	2.1

6.2 Non-standard residues in protein, DNA, RNA chains [i](#)

There are no non-standard protein/DNA/RNA residues in this entry.

6.3 Carbohydrates [i](#)

There are no carbohydrates in this entry.

6.4 Ligands [i](#)

In the following table, the Atoms column lists the number of modelled atoms in the group and the number defined in the chemical component dictionary. LLDF column lists the quality of electron density of the group with respect to its neighbouring residues in protein, DNA or RNA chains. The B-factors column lists the minimum, median, 95th percentile and maximum values of B factors of atoms in the group. The column labelled 'Q< 0.9' lists the number of atoms with occupancy less than 0.9.

Mol	Type	Chain	Res	Atoms	RSCC	RSR	LLDF	B-factors(Å ²)	Q<0.9
3	CPS	A	505	36/42	0.74	0.25	11.10	57,78,86,91	34
2	15P	A	502	8/104	0.90	0.16	3.41	46,51,56,67	0
2	15P	A	504	10/104	0.92	0.18	1.56	31,60,76,85	0
3	CPS	A	506	29/42	0.88	0.22	1.09	60,65,79,85	29
2	15P	A	503	10/104	0.62	0.20	0.79	74,89,102,103	0
4	MG	A	507	1/1	0.96	0.06	-1.14	52,52,52,52	0
2	15P	A	501	8/104	0.63	0.18	-	92,98,103,104	0

6.5 Other polymers [i](#)

There are no such residues in this entry.