



Full wwPDB X-ray Structure Validation Report ⓘ

Feb 1, 2016 – 05:08 PM GMT

PDB ID : 4HAV
Title : Crystal structure of CRM1 inhibitor Anguinomycin A in complex with CRM1-Ran-RanBP1
Authors : Sun, Q.; Chook, Y.M.
Deposited on : 2012-09-27
Resolution : 2.00 Å(reported)

This is a Full wwPDB X-ray Structure Validation Report for a publicly released PDB entry.
We welcome your comments at validation@mail.wwpdb.org
A user guide is available at
<http://wwpdb.org/validation/2016/XrayValidationReportHelp>
with specific help available everywhere you see the ⓘ symbol.

The following versions of software and data (see [references ⓘ](#)) were used in the production of this report:

MolProbity : 4.02b-467
Mogul : 1.7 (RC4), CSD as536be (2015)
Xtriage (Phenix) : 1.9-1692
EDS : rb-20026688
Percentile statistics : 20151230.v01 (using entries in the PDB archive December 30th 2015)
Refmac : 5.8.0135
CCP4 : 6.5.0
Ideal geometry (proteins) : Engh & Huber (2001)
Ideal geometry (DNA, RNA) : Parkinson et al. (1996)
Validation Pipeline (wwPDB-VP) : trunk26865

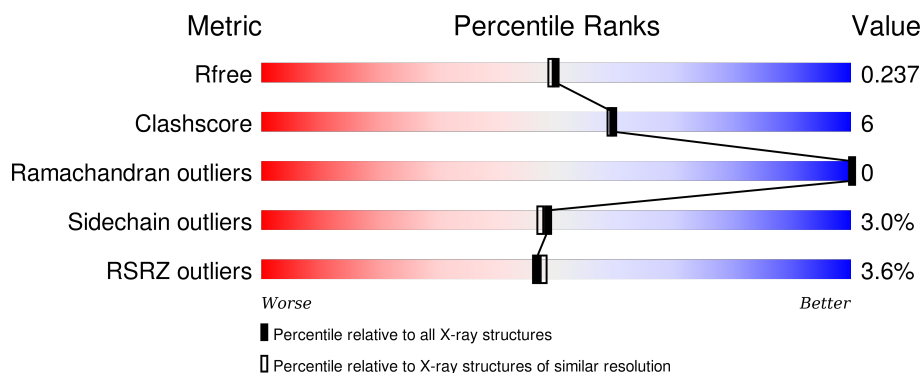
1 Overall quality at a glance

The following experimental techniques were used to determine the structure:

X-RAY DIFFRACTION

The reported resolution of this entry is 2.00 Å.

Percentile scores (ranging between 0-100) for global validation metrics of the entry are shown in the following graphic. The table shows the number of entries on which the scores are based.



Metric	Whole archive (#Entries)	Similar resolution (#Entries, resolution range(Å))
R_{free}	91344	6249 (2.00-2.00)
Clashscore	102246	7340 (2.00-2.00)
Ramachandran outliers	100387	7248 (2.00-2.00)
Sidechain outliers	100360	7247 (2.00-2.00)
RSRZ outliers	91569	6262 (2.00-2.00)

The table below summarises the geometric issues observed across the polymeric chains and their fit to the electron density. The red, orange, yellow and green segments on the lower bar indicate the fraction of residues that contain outliers for ≥ 3 , 2, 1 and 0 types of geometric quality criteria. A grey segment represents the fraction of residues that are not modelled. The numeric value for each fraction is indicated below the corresponding segment, with a dot representing fractions $\leq 5\%$. The upper red bar (where present) indicates the fraction of residues that have poor fit to the electron density. The numeric value is given above the bar.

Mol	Chain	Length	Quality of chain
1	A	216	<div> <div style="width: 100%; height: 10px; background-color: red;"></div> <div style="display: flex; justify-content: space-between; align-items: center;"> % 79% 11% • 9% </div> </div>
2	B	140	<div> <div style="width: 100%; height: 10px; background-color: red;"></div> <div style="display: flex; justify-content: space-between; align-items: center;"> 11% 79% 14% • 6% </div> </div>
3	C	1023	<div> <div style="width: 100%; height: 10px; background-color: red;"></div> <div style="display: flex; justify-content: space-between; align-items: center;"> 3% 89% 9% •• </div> </div>

The following table lists non-polymeric compounds, carbohydrate monomers and non-standard residues in protein, DNA, RNA chains that are outliers for geometric or electron-density-fit criteria:

Mol	Type	Chain	Res	Chirality	Geometry	Clashes	Electron density
7	AA8	C	1101	-	-	-	X

2 Entry composition

There are 8 unique types of molecules in this entry. The entry contains 12278 atoms, of which 0 are hydrogens and 0 are deuteriums.

In the tables below, the ZeroOcc column contains the number of atoms modelled with zero occupancy, the AltConf column contains the number of residues with at least one atom in alternate conformation and the Trace column contains the number of residues modelled with at most 2 atoms.

- Molecule 1 is a protein called GTP-binding nuclear protein Ran.

Mol	Chain	Residues	Atoms					ZeroOcc	AltConf	Trace
1	A	196	Total	C	N	O	S	0	8	0
			1639	1057	284	292	6			

- Molecule 2 is a protein called Ran-specific GTPase-activating protein 1.

Mol	Chain	Residues	Atoms					ZeroOcc	AltConf	Trace
2	B	131	Total	C	N	O	S	0	3	0
			1106	703	192	206	5			

There is a discrepancy between the modelled and reference sequences:

Chain	Residue	Modelled	Actual	Comment	Reference
B	98	LYS	ALA	CONFLICT	UNP P41920

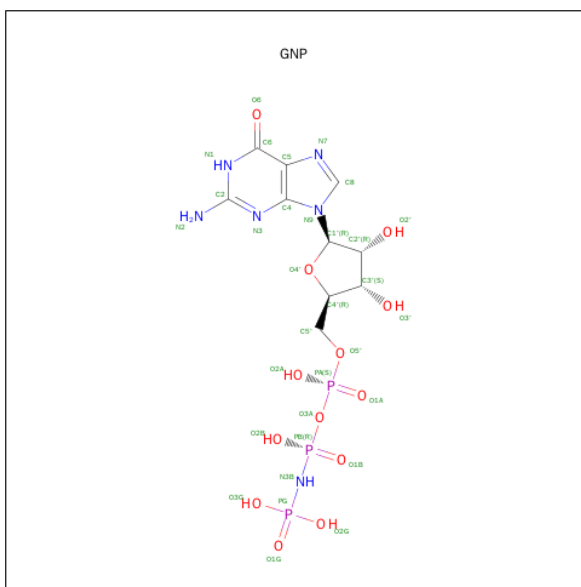
- Molecule 3 is a protein called Exportin-1.

Mol	Chain	Residues	Atoms					ZeroOcc	AltConf	Trace
3	C	1016	Total	C	N	O	S	0	49	0
			8503	5480	1384	1596	43			

There are 5 discrepancies between the modelled and reference sequences:

Chain	Residue	Modelled	Actual	Comment	Reference
C	-1	GLY	-	EXPRESSION TAG	UNP P30822
C	0	ALA	-	EXPRESSION TAG	UNP P30822
C	205	ALA	SER	CONFLICT	UNP P30822
C	539	CYS	THR	ENGINEERED MUTATION	UNP P30822
C	1022	CYS	TYR	ENGINEERED MUTATION	UNP P30822

- Molecule 4 is PHOSPHOAMINOPHOSPHONIC ACID-GUANYLATE ESTER (three-letter code: GNP) (formula: C₁₀H₁₇N₆O₁₃P₃).



Mol	Chain	Residues	Atoms					ZeroOcc	AltConf
4	A	1	Total	C	N	O	P	0	0
			32	10	6	13	3		

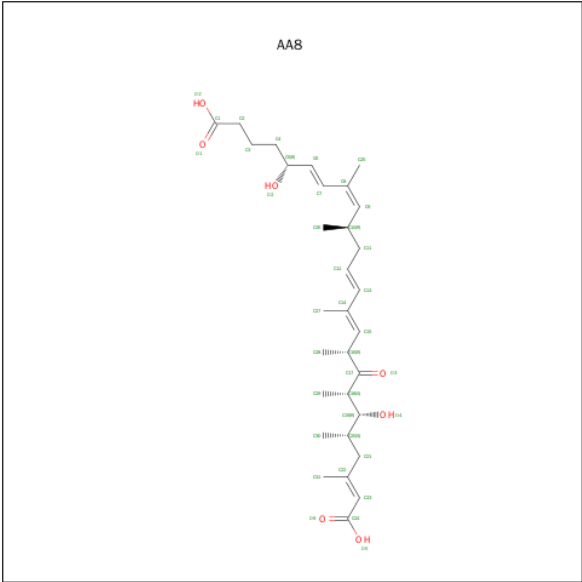
- Molecule 5 is MAGNESIUM ION (three-letter code: MG) (formula: Mg).

Mol	Chain	Residues	Atoms		ZeroOcc	AltConf
5	A	1	Total	Mg	0	0
			1	1		

- Molecule 6 is CHLORIDE ION (three-letter code: CL) (formula: Cl).

Mol	Chain	Residues	Atoms		ZeroOcc	AltConf
6	A	1	Total	Cl	0	0
			1	1		
6	C	3	Total	Cl	0	0
			3	3		

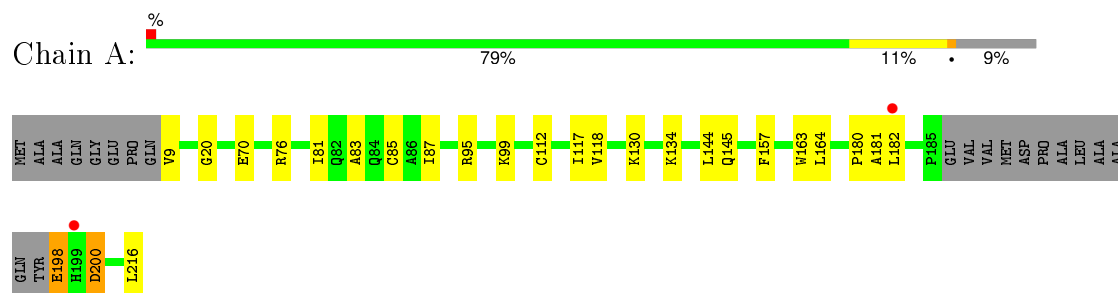
- Molecule 7 is ANGUINOMYCIN A, BOUND FORM (three-letter code: AA8) (formula: C₃₁H₄₈O₇).



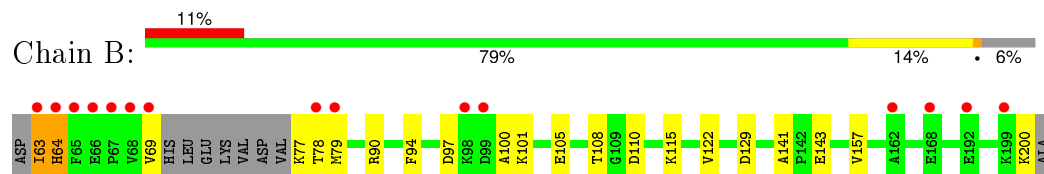
3 Residue-property plots [i](#)

These plots are drawn for all protein, RNA and DNA chains in the entry. The first graphic for a chain summarises the proportions of errors displayed in the second graphic. The second graphic shows the sequence view annotated by issues in geometry and electron density. Residues are color-coded according to the number of geometric quality criteria for which they contain at least one outlier: green = 0, yellow = 1, orange = 2 and red = 3 or more. A red dot above a residue indicates a poor fit to the electron density ($RSRZ > 2$). Stretches of 2 or more consecutive residues without any outlier are shown as a green connector. Residues present in the sample, but not in the model, are shown in grey.

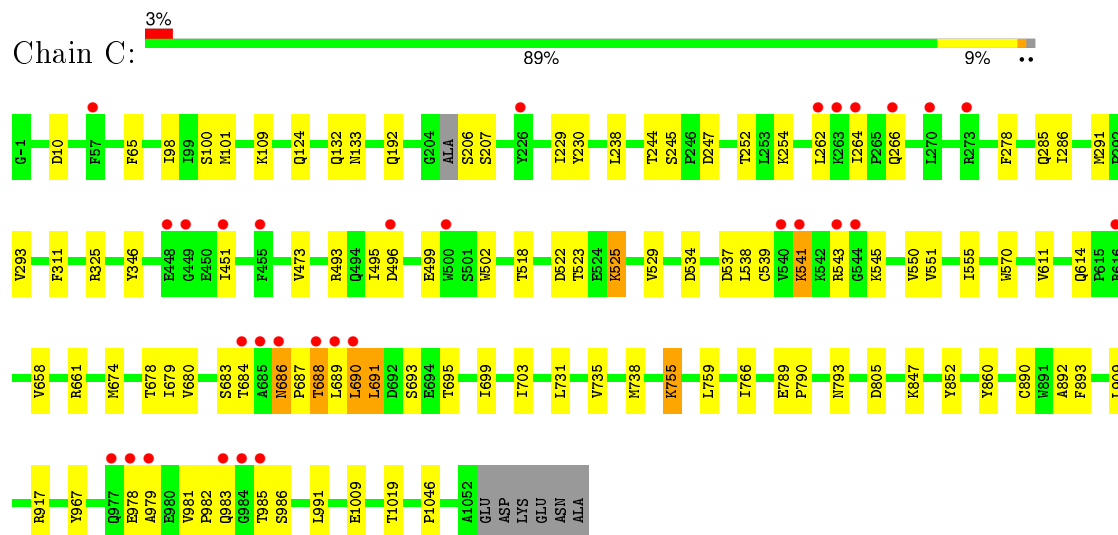
- Molecule 1: GTP-binding nuclear protein Ran



- Molecule 2: Ran-specific GTPase-activating protein 1



- Molecule 3: Exportin-1



4 Data and refinement statistics

Property	Value	Source
Space group	P 43 21 2	Depositor
Cell constants a, b, c, α , β , γ	106.24Å 106.24Å 306.39Å 90.00° 90.00° 90.00°	Depositor
Resolution (Å)	50.00 – 2.00 40.47 – 2.00	Depositor EDS
% Data completeness (in resolution range)	94.8 (50.00-2.00) 94.8 (40.47-2.00)	Depositor EDS
R_{merge}	(Not available)	Depositor
R_{sym}	(Not available)	Depositor
$\langle I/\sigma(I) \rangle$ ¹	2.03 (at 2.00Å)	Xtriage
Refinement program	REFMAC 5.6.0117	Depositor
R, R_{free}	0.171 , 0.220 0.194 , 0.237	Depositor DCC
R_{free} test set	5683 reflections (5.29%)	DCC
Wilson B-factor (Å ²)	30.6	Xtriage
Anisotropy	0.240	Xtriage
Bulk solvent k_{sol} (e/Å ³), B_{sol} (Å ²)	0.33 , 50.3	EDS
Estimated twinning fraction	No twinning to report.	Xtriage
L-test for twinning ²	$\langle L \rangle = 0.48$, $\langle L^2 \rangle = 0.30$	Xtriage
Outliers	0 of 113444 reflections	Xtriage
F_o, F_c correlation	0.96	EDS
Total number of atoms	12278	wwPDB-VP
Average B, all atoms (Å ²)	34.0	wwPDB-VP

Xtriage's analysis on translational NCS is as follows: *The largest off-origin peak in the Patterson function is 3.57% of the height of the origin peak. No significant pseudotranslation is detected.*

¹Intensities estimated from amplitudes.

²Theoretical values of $\langle |L| \rangle$, $\langle L^2 \rangle$ for acentric reflections are 0.5, 0.375 respectively for untwinned datasets, and 0.333, 0.2 for perfectly twinned datasets.

5 Model quality [i](#)

5.1 Standard geometry [i](#)

Bond lengths and bond angles in the following residue types are not validated in this section: MG, CL, GNP, AA8

The Z score for a bond length (or angle) is the number of standard deviations the observed value is removed from the expected value. A bond length (or angle) with $|Z| > 5$ is considered an outlier worth inspection. RMSZ is the root-mean-square of all Z scores of the bond lengths (or angles).

Mol	Chain	Bond lengths		Bond angles	
		RMSZ	$\# Z > 5$	RMSZ	$\# Z > 5$
1	A	0.55	0/1686	0.70	0/2278
2	B	0.50	0/1124	0.61	0/1497
3	C	0.53	1/8774 (0.0%)	0.63	0/11883
All	All	0.53	1/11584 (0.0%)	0.64	0/15658

All (1) bond length outliers are listed below:

Mol	Chain	Res	Type	Atoms	Z	Observed(Å)	Ideal(Å)
3	C	502	TRP	CD2-CE2	5.02	1.47	1.41

There are no bond angle outliers.

There are no chirality outliers.

There are no planarity outliers.

5.2 Too-close contacts [i](#)

In the following table, the Non-H and H(model) columns list the number of non-hydrogen atoms and hydrogen atoms in the chain respectively. The H(added) column lists the number of hydrogen atoms added and optimized by MolProbity. The Clashes column lists the number of clashes within the asymmetric unit, whereas Symm-Clashes lists symmetry related clashes.

Mol	Chain	Non-H	H(model)	H(added)	Clashes	Symm-Clashes
1	A	1639	0	1653	18	0
2	B	1106	0	1109	21	0
3	C	8503	0	8659	91	0
4	A	32	0	13	1	0
5	A	1	0	0	0	0
6	A	1	0	0	0	0
6	C	3	0	0	0	0

Continued on next page...

Continued from previous page...

Mol	Chain	Non-H	H(model)	H(added)	Clashes	Symm-Clashes
7	C	38	0	44	4	0
8	A	152	0	0	3	0
8	B	49	0	0	0	0
8	C	754	0	0	7	0
All	All	12278	0	11478	129	0

The all-atom clashscore is defined as the number of clashes found per 1000 atoms (including hydrogen atoms). The all-atom clashscore for this structure is 6.

All (129) close contacts within the same asymmetric unit are listed below, sorted by their clash magnitude.

Atom-1	Atom-2	Interatomic distance (Å)	Clash overlap (Å)
2:B:200[B]:LYS:C	2:B:200[B]:LYS:HE2	1.60	1.20
3:C:967[B]:TYR:CE1	3:C:1019[B]:THR:HG21	1.78	1.18
3:C:917[B]:ARG:HH11	3:C:917[B]:ARG:HG3	1.03	1.11
3:C:688:THR:C	3:C:691:LEU:HD23	1.74	1.06
3:C:686:ASN:CG	3:C:689:LEU:HD11	1.80	1.02
3:C:688:THR:HA	3:C:691:LEU:CD2	1.92	0.99
3:C:688:THR:CA	3:C:691:LEU:HD23	1.92	0.98
3:C:967[B]:TYR:CE1	3:C:1019[B]:THR:CG2	2.46	0.98
2:B:200[B]:LYS:C	2:B:200[B]:LYS:CE	2.31	0.96
3:C:967[B]:TYR:CZ	3:C:1019[B]:THR:HG21	2.07	0.90
3:C:917[B]:ARG:CG	3:C:917[B]:ARG:HH11	1.83	0.89
3:C:686:ASN:HB2	3:C:689:LEU:CD1	2.03	0.89
2:B:200[B]:LYS:C	2:B:200[B]:LYS:CD	2.45	0.85
3:C:917[B]:ARG:NH1	3:C:917[B]:ARG:HG3	1.82	0.85
3:C:245:SER:HB2	3:C:247[A]:ASP:OD2	1.77	0.84
3:C:686:ASN:CB	3:C:689:LEU:HD11	2.06	0.83
2:B:78:THR:O	2:B:79:MET:HB2	1.78	0.83
3:C:688:THR:O	3:C:691:LEU:HD23	1.78	0.82
3:C:686:ASN:CB	3:C:689:LEU:CD1	2.60	0.79
3:C:244:THR:HG22	3:C:285:GLN:OE1	1.83	0.77
3:C:688:THR:O	3:C:691:LEU:HB2	1.83	0.77
1:A:70:GLU:O	1:A:76[B]:ARG:NH2	2.17	0.77
3:C:686:ASN:HB2	3:C:689:LEU:HD11	1.66	0.77
3:C:686:ASN:O	3:C:689:LEU:CD1	2.34	0.76
3:C:690:LEU:HB3	3:C:738:MET:CE	2.18	0.74
1:A:181:ALA:H	2:B:79:MET:HB2	1.53	0.72
3:C:687:PRO:O	3:C:691:LEU:CD2	2.38	0.70
3:C:688:THR:CA	3:C:691:LEU:CD2	2.60	0.70
3:C:690:LEU:HD13	3:C:690:LEU:O	1.91	0.70

Continued on next page...

Continued from previous page...

Atom-1	Atom-2	Interatomic distance (Å)	Clash overlap (Å)
2:B:63:ILE:HG22	2:B:63:ILE:O	1.91	0.70
3:C:686:ASN:O	3:C:689:LEU:HD13	1.90	0.69
3:C:981:VAL:HG11	3:C:985:THR:HG21	1.74	0.69
3:C:686:ASN:HB2	3:C:689:LEU:HD12	1.74	0.68
1:A:198:GLU:HG2	1:A:200:ASP:OD2	1.93	0.68
1:A:9:VAL:HG21	8:A:546:HOH:O	1.94	0.68
2:B:200[B]:LYS:HD2	2:B:200[B]:LYS:C	2.13	0.67
3:C:230:TYR:CE2	3:C:264:ILE:HD11	2.30	0.67
3:C:967[B]:TYR:CD1	3:C:1019[B]:THR:CG2	2.78	0.67
3:C:688:THR:HA	3:C:691:LEU:HD21	1.73	0.67
3:C:690:LEU:CD1	3:C:690:LEU:O	2.42	0.67
3:C:686:ASN:CG	3:C:689:LEU:CD1	2.61	0.66
3:C:689:LEU:HD12	3:C:689:LEU:H	1.60	0.65
3:C:690:LEU:HB3	3:C:738:MET:HE1	1.79	0.65
3:C:686:ASN:N	3:C:686:ASN:OD1	2.30	0.64
3:C:1009[A]:GLU:HG2	3:C:1046:PRO:HG3	1.79	0.63
3:C:967[B]:TYR:CZ	3:C:1019[B]:THR:CG2	2.76	0.63
3:C:981:VAL:HG13	3:C:982:PRO:HD2	1.82	0.62
3:C:688:THR:O	3:C:691:LEU:CB	2.48	0.61
3:C:686:ASN:O	3:C:689:LEU:HD12	2.00	0.61
1:A:95:ARG:O	1:A:99[B]:LYS:HE2	2.01	0.61
3:C:890:CYS:O	3:C:893[B]:PHE:HB2	2.02	0.60
3:C:495:ILE:HD11	3:C:534:ASP:HB3	1.83	0.59
2:B:64:HIS:O	2:B:64:HIS:CD2	2.56	0.59
1:A:216:LEU:HD23	2:B:108:THR:HG23	1.84	0.58
3:C:699:ILE:HG21	3:C:731:LEU:HD21	1.86	0.57
3:C:493[A]:ARG:NE	3:C:499:GLU:OE2	2.38	0.57
2:B:97:ASP:O	2:B:100:ALA:O	2.23	0.56
1:A:118[B]:VAL:CG1	1:A:163:TRP:CE3	2.88	0.56
2:B:90:ARG:NH2	2:B:129:ASP:OD2	2.40	0.55
3:C:293[B]:VAL:HG12	3:C:346:TYR:CE2	2.42	0.55
3:C:537:ASP:O	3:C:541:LYS:HE3	2.06	0.55
3:C:679:ILE:CD1	3:C:695:THR:HG23	2.37	0.55
2:B:63:ILE:O	2:B:63:ILE:CG2	2.54	0.55
3:C:688:THR:O	3:C:691:LEU:CD2	2.53	0.54
3:C:985:THR:HG22	3:C:986:SER:N	2.22	0.54
3:C:687:PRO:O	3:C:738:MET:HE1	2.08	0.53
1:A:81:ILE:HD11	3:C:65:PHE:CG	2.44	0.53
3:C:293[B]:VAL:HG12	3:C:346:TYR:CZ	2.44	0.52
3:C:674:MET:O	3:C:678:THR:HG23	2.10	0.52
3:C:691:LEU:N	3:C:691:LEU:CD2	2.74	0.51

Continued on next page...

Continued from previous page...

Atom-1	Atom-2	Interatomic distance (Å)	Clash overlap (Å)
3:C:909:LEU:HD13	8:C:1711:HOH:O	2.10	0.51
3:C:703[B]:ILE:HD13	3:C:766:ILE:HG13	1.93	0.51
3:C:967[B]:TYR:HE2	3:C:991:LEU:HD23	1.75	0.51
3:C:539:CYS:SG	7:C:1101:AA8:O1'	2.68	0.51
3:C:691:LEU:N	3:C:691:LEU:HD22	2.26	0.51
1:A:87:ILE:HG12	1:A:118[B]:VAL:CG2	2.42	0.50
1:A:180:PRO:HB3	2:B:79:MET:HG3	1.93	0.50
3:C:978:GLU:O	3:C:979:ALA:HB3	2.12	0.49
1:A:20:GLY:H	4:A:301:GNP:HNB3	1.59	0.49
3:C:525:LYS:O	3:C:529:VAL:HG23	2.12	0.49
3:C:789[A]:GLU:HB3	3:C:790:PRO:HD3	1.96	0.48
3:C:789[B]:GLU:HB2	3:C:790:PRO:HD3	1.96	0.48
1:A:83:ALA:HB3	1:A:112:CYS:SG	2.53	0.48
3:C:132:GLN:HG2	3:C:133[B]:ASN:HD22	1.79	0.48
3:C:451:ILE:HG13	3:C:550:VAL:HG23	1.95	0.47
1:A:117:ILE:HB	1:A:144:LEU:HD22	1.95	0.47
3:C:192[B]:GLN:HG3	8:C:1690:HOH:O	2.14	0.47
7:C:1101:AA8:C31	7:C:1101:AA8:O6	2.63	0.47
3:C:860:TYR:CE1	3:C:892:ALA:HB2	2.50	0.47
2:B:64:HIS:C	2:B:64:HIS:CD2	2.88	0.47
3:C:691:LEU:CD2	3:C:691:LEU:H	2.28	0.46
1:A:118[B]:VAL:HG12	1:A:163:TRP:CE3	2.51	0.46
3:C:686:ASN:ND2	3:C:689:LEU:HD11	2.27	0.46
3:C:238:LEU:O	3:C:252:THR:HG21	2.15	0.46
2:B:78:THR:O	2:B:79:MET:CB	2.55	0.46
3:C:98:ILE:HA	3:C:101[B]:MET:HE2	1.98	0.46
3:C:325:ARG:NH2	8:C:1693:HOH:O	2.48	0.46
3:C:680:VAL:O	3:C:684:THR:HG23	2.16	0.45
3:C:687:PRO:O	3:C:691:LEU:HD23	2.17	0.45
3:C:985:THR:CG2	3:C:986:SER:N	2.79	0.45
1:A:118[B]:VAL:HG12	1:A:145:GLN:HB3	1.98	0.45
3:C:755:LYS:HA	3:C:755:LYS:HZ3	1.82	0.45
3:C:981:VAL:CG1	3:C:985:THR:OG1	2.65	0.44
3:C:264:ILE:HG22	8:C:1693:HOH:O	2.17	0.44
3:C:658[B]:VAL:HG22	3:C:661:ARG:HH22	1.82	0.44
7:C:1101:AA8:O2	7:C:1101:AA8:C2	2.65	0.44
3:C:254[B]:LYS:HE3	8:C:1794:HOH:O	2.18	0.44
2:B:141:ALA:HB1	2:B:143:GLU:OE1	2.18	0.43
3:C:286[A]:ILE:HD12	3:C:311:PHE:HZ	1.83	0.43
3:C:735[A]:VAL:HG13	3:C:759:LEU:HB3	2.01	0.43
3:C:229:ILE:HG13	3:C:262:LEU:HD11	2.01	0.42

Continued on next page...

Continued from previous page...

Atom-1	Atom-2	Interatomic distance (Å)	Clash overlap (Å)
3:C:793:ASN:HB3	8:C:1664:HOH:O	2.18	0.42
2:B:90:ARG:HG2	2:B:110:ASP:OD1	2.20	0.42
2:B:115:LYS:HB2	2:B:122:VAL:HG22	2.00	0.42
3:C:551:VAL:O	3:C:555:ILE:HG13	2.19	0.42
3:C:473:VAL:HG13	3:C:518:THR:HG22	2.00	0.42
3:C:493[B]:ARG:HA	3:C:493[B]:ARG:HD2	1.62	0.42
3:C:805:ASP:OD1	3:C:852:TYR:OH	2.22	0.42
3:C:124[A]:GLN:HA	3:C:124[A]:GLN:OE1	2.19	0.42
3:C:496:ASP:C	3:C:496:ASP:OD1	2.59	0.42
1:A:85:CYS:HB2	1:A:164:LEU:HD22	2.02	0.41
7:C:1101:AA8:H39	7:C:1101:AA8:H30	1.89	0.41
2:B:94:PHE:CE2	2:B:105[A]:GLU:HG3	2.56	0.41
2:B:143:GLU:CD	2:B:143:GLU:H	2.23	0.41
3:C:293[A]:VAL:HG23	8:C:1318:HOH:O	2.21	0.41
1:A:99[B]:LYS:NZ	8:A:473:HOH:O	2.53	0.41
3:C:570:TRP:CE2	3:C:614:GLN:HG3	2.55	0.40
2:B:200[B]:LYS:HD2	2:B:200[B]:LYS:O	2.22	0.40
1:A:130:LYS:NZ	8:A:461:HOH:O	2.54	0.40

There are no symmetry-related clashes.

5.3 Torsion angles [i](#)

5.3.1 Protein backbone [i](#)

In the following table, the Percentiles column shows the percent Ramachandran outliers of the chain as a percentile score with respect to all X-ray entries followed by that with respect to entries of similar resolution.

The Analysed column shows the number of residues for which the backbone conformation was analysed, and the total number of residues.

Mol	Chain	Analysed	Favoured	Allowed	Outliers	Percentiles	
1	A	200/216 (93%)	195 (98%)	5 (2%)	0	100	100
2	B	129/140 (92%)	120 (93%)	9 (7%)	0	100	100
3	C	1061/1023 (104%)	1041 (98%)	20 (2%)	0	100	100
All	All	1390/1379 (101%)	1356 (98%)	34 (2%)	0	100	100

There are no Ramachandran outliers to report.

5.3.2 Protein sidechains ⓘ

In the following table, the Percentiles column shows the percent sidechain outliers of the chain as a percentile score with respect to all X-ray entries followed by that with respect to entries of similar resolution.

The Analysed column shows the number of residues for which the sidechain conformation was analysed, and the total number of residues.

Mol	Chain	Analysed	Rotameric	Outliers	Percentiles	
1	A	179/185 (97%)	174 (97%)	5 (3%)	51	50
2	B	117/122 (96%)	111 (95%)	6 (5%)	29	23
3	C	976/932 (105%)	951 (97%)	25 (3%)	54	54
All	All	1272/1239 (103%)	1236 (97%)	36 (3%)	48	50

All (36) residues with a non-rotameric sidechain are listed below:

Mol	Chain	Res	Type
1	A	134	LYS
1	A	157	PHE
1	A	182	LEU
1	A	198	GLU
1	A	200	ASP
2	B	63	ILE
2	B	64	HIS
2	B	69	VAL
2	B	77	LYS
2	B	101	LYS
2	B	157	VAL
3	C	10	ASP
3	C	100	SER
3	C	109	LYS
3	C	206	SER
3	C	207	SER
3	C	266	GLN
3	C	278	PHE
3	C	291	MET
3	C	522	ASP
3	C	523	THR
3	C	525	LYS
3	C	538	LEU
3	C	541	LYS
3	C	543	ARG
3	C	545	LYS

Continued on next page...

Continued from previous page...

Mol	Chain	Res	Type
3	C	611	VAL
3	C	683	SER
3	C	686	ASN
3	C	688	THR
3	C	690	LEU
3	C	691	LEU
3	C	693	SER
3	C	755	LYS
3	C	847	LYS
3	C	983	GLN

Some sidechains can be flipped to improve hydrogen bonding and reduce clashes. All (6) such sidechains are listed below:

Mol	Chain	Res	Type
1	A	10	GLN
1	A	48	HIS
2	B	64	HIS
3	C	173	GLN
3	C	266	GLN
3	C	983	GLN

5.3.3 RNA [i](#)

There are no RNA molecules in this entry.

5.4 Non-standard residues in protein, DNA, RNA chains [i](#)

There are no non-standard protein/DNA/RNA residues in this entry.

5.5 Carbohydrates [i](#)

There are no carbohydrates in this entry.

5.6 Ligand geometry [i](#)

Of 7 ligands modelled in this entry, 5 are monoatomic - leaving 2 for Mogul analysis.

In the following table, the Counts columns list the number of bonds (or angles) for which Mogul statistics could be retrieved, the number of bonds (or angles) that are observed in the model and

the number of bonds (or angles) that are defined in the chemical component dictionary. The Link column lists molecule types, if any, to which the group is linked. The Z score for a bond length (or angle) is the number of standard deviations the observed value is removed from the expected value. A bond length (or angle) with $|Z| > 2$ is considered an outlier worth inspection. RMSZ is the root-mean-square of all Z scores of the bond lengths (or angles).

Mol	Type	Chain	Res	Link	Bond lengths			Bond angles		
					Counts	RMSZ	# Z > 2	Counts	RMSZ	# Z > 2
4	GNP	A	301	5	28,34,34	1.51	5 (17%)	33,54,54	1.94	9 (27%)
7	AA8	C	1101	3	30,37,37	0.77	1 (3%)	30,48,48	1.46	6 (20%)

In the following table, the Chirals column lists the number of chiral outliers, the number of chiral centers analysed, the number of these observed in the model and the number defined in the chemical component dictionary. Similar counts are reported in the Torsion and Rings columns. '-' means no outliers of that kind were identified.

Mol	Type	Chain	Res	Link	Chirals	Torsions	Rings
4	GNP	A	301	5	-	0/12/38/38	0/3/3/3
7	AA8	C	1101	3	-	0/45/49/49	0/0/0/0

All (6) bond length outliers are listed below:

Mol	Chain	Res	Type	Atoms	Z	Observed(Å)	Ideal(Å)
7	C	1101	AA8	C16-C17	-2.90	1.50	1.52
4	A	301	GNP	C6-C5	2.71	1.46	1.41
4	A	301	GNP	PG-N3B	3.00	1.71	1.63
4	A	301	GNP	PB-O1B	3.16	1.49	1.46
4	A	301	GNP	C5-C4	3.16	1.47	1.40
4	A	301	GNP	PB-N3B	3.58	1.72	1.63

All (15) bond angle outliers are listed below:

Mol	Chain	Res	Type	Atoms	Z	Observed(°)	Ideal(°)
4	A	301	GNP	C5-C6-N1	-5.04	116.70	123.59
4	A	301	GNP	O1G-PG-N3B	-4.09	105.62	111.90
7	C	1101	AA8	C5-C6-C7	-3.70	114.26	124.63
4	A	301	GNP	C6-C5-C4	-3.39	116.84	120.90
4	A	301	GNP	N3-C2-N1	-2.54	123.58	127.44
7	C	1101	AA8	C12-C13-C14	-2.46	122.00	125.75
7	C	1101	AA8	C11-C12-C13	-2.45	120.05	125.67
4	A	301	GNP	PA-O3A-PB	-2.33	124.85	132.67
4	A	301	GNP	C1'-N9-C4	-2.27	123.51	126.94
7	C	1101	AA8	C10-C11-C12	-2.09	110.51	114.00
4	A	301	GNP	C4-C5-N7	-2.01	107.63	109.48

Continued on next page...

Continued from previous page...

Mol	Chain	Res	Type	Atoms	Z	Observed(°)	Ideal(°)
4	A	301	GNP	O2B-PB-O1B	2.23	114.66	110.00
7	C	1101	AA8	C31-C22-C21	2.27	118.74	115.50
7	C	1101	AA8	C4-C5-C6	2.29	116.55	111.68
4	A	301	GNP	C6-N1-C2	5.31	123.30	115.94

There are no chirality outliers.

There are no torsion outliers.

There are no ring outliers.

2 monomers are involved in 5 short contacts:

Mol	Chain	Res	Type	Clashes	Symm-Clashes
4	A	301	GNP	1	0
7	C	1101	AA8	4	0

5.7 Other polymers [i](#)

There are no such residues in this entry.

5.8 Polymer linkage issues [i](#)

There are no chain breaks in this entry.

6 Fit of model and data ⓘ

6.1 Protein, DNA and RNA chains ⓘ

In the following table, the column labelled ‘#RSRZ> 2’ contains the number (and percentage) of RSRZ outliers, followed by percent RSRZ outliers for the chain as percentile scores relative to all X-ray entries and entries of similar resolution. The OWAB column contains the minimum, median, 95th percentile and maximum values of the occupancy-weighted average B-factor per residue. The column labelled ‘Q< 0.9’ lists the number of (and percentage) of residues with an average occupancy less than 0.9.

Mol	Chain	Analysed	<RSRZ>	#RSRZ>2	OWAB(Å ²)	Q<0.9
1	A	196/216 (90%)	-0.26	2 (1%) 84 84	15, 24, 49, 72	0
2	B	131/140 (93%)	0.60	15 (11%) 6 7	21, 37, 52, 71	0
3	C	1016/1023 (99%)	-0.07	31 (3%) 52 53	16, 30, 58, 96	0
All	All	1343/1379 (97%)	-0.03	48 (3%) 46 48	15, 30, 55, 96	0

All (48) RSRZ outliers are listed below:

Mol	Chain	Res	Type	RSRZ
2	B	63	ILE	9.0
2	B	69	VAL	7.3
3	C	690	LEU	7.2
2	B	64	HIS	6.9
3	C	689	LEU	6.7
3	C	979	ALA	5.1
3	C	978	GLU	4.9
3	C	984	GLY	4.9
2	B	65	PHE	4.7
2	B	67	PRO	4.7
3	C	685	ALA	4.5
3	C	543	ARG	4.4
2	B	68	VAL	3.6
2	B	79	MET	3.5
2	B	66	GLU	3.5
3	C	977	GLN	3.3
3	C	616	ARG	3.2
3	C	226	TYR	3.2
2	B	168[A]	GLU	3.2
2	B	78	THR	3.2
2	B	98	LYS	3.1
3	C	983	GLN	3.1
3	C	449	GLY	3.0

Continued on next page...

Continued from previous page...

Mol	Chain	Res	Type	RSRZ
3	C	448	GLU	2.8
3	C	264	ILE	2.7
3	C	270	LEU	2.7
3	C	496	ASP	2.7
1	A	182	LEU	2.6
3	C	684	THR	2.6
2	B	192	GLU	2.5
3	C	57	PHE	2.5
3	C	688	THR	2.5
3	C	541	LYS	2.4
2	B	199	LYS	2.4
3	C	686	ASN	2.4
1	A	199	HIS	2.3
3	C	266	GLN	2.3
3	C	544	GLY	2.3
3	C	500	TRP	2.3
3	C	455	PHE	2.2
3	C	263	LYS	2.2
2	B	99	ASP	2.2
3	C	262	LEU	2.2
3	C	985	THR	2.1
3	C	273	ARG	2.1
3	C	540	VAL	2.1
2	B	162	ALA	2.1
3	C	451	ILE	2.0

6.2 Non-standard residues in protein, DNA, RNA chains ⓘ

There are no non-standard protein/DNA/RNA residues in this entry.

6.3 Carbohydrates ⓘ

There are no carbohydrates in this entry.

6.4 Ligands ⓘ

In the following table, the Atoms column lists the number of modelled atoms in the group and the number defined in the chemical component dictionary. LLDF column lists the quality of electron density of the group with respect to its neighbouring residues in protein, DNA or RNA chains. The B-factors column lists the minimum, median, 95th percentile and maximum values of B factors

of atoms in the group. The column labelled 'Q< 0.9' lists the number of atoms with occupancy less than 0.9.

Mol	Type	Chain	Res	Atoms	RSCC	RSR	LLDF	B-factors(\AA^2)	Q<0.9
7	AA8	C	1101	38/38	0.91	0.23	2.92	41,54,85,103	0
6	CL	C	1104	1/1	0.99	0.13	0.79	72,72,72,72	0
4	GNP	A	301	32/32	0.99	0.09	-0.09	18,21,23,27	0
6	CL	C	1102	1/1	0.92	0.14	-0.10	86,86,86,86	0
5	MG	A	302	1/1	0.98	0.06	-1.29	20,20,20,20	0
6	CL	C	1103	1/1	0.97	0.07	-2.48	61,61,61,61	0
6	CL	A	303	1/1	0.93	0.29	-	72,72,72,72	0

6.5 Other polymers [i](#)

There are no such residues in this entry.