



Full wwPDB X-ray Structure Validation Report ⓘ

Aug 22, 2016 – 04:33 PM EDT

PDB ID : 5HI4
Title : Binding site elucidation and structure guided design of macrocyclic IL-17A antagonists
Authors : Liu, S.
Deposited on : 2016-01-11
Resolution : 1.80 Å(reported)

This is a Full wwPDB X-ray Structure Validation Report for a publicly released PDB entry.

We welcome your comments at validation@mail.wwpdb.org

A user guide is available at

<http://wwpdb.org/validation/2016/XrayValidationReportHelp>

with specific help available everywhere you see the ⓘ symbol.

The following versions of software and data (see [references ⓘ](#)) were used in the production of this report:

MolProbity : 4.02b-467
Mogul : 1.7.1 (RC1), CSD as537be (2016)
Xtriage (Phenix) : 1.9-1692
EDS : rb-20027939
Percentile statistics : 20151230.v01 (using entries in the PDB archive December 30th 2015)
Refmac : 5.8.0135
CCP4 : 6.5.0
Ideal geometry (proteins) : Engh & Huber (2001)
Ideal geometry (DNA, RNA) : Parkinson et al. (1996)
Validation Pipeline (wwPDB-VP) : rb-20027939

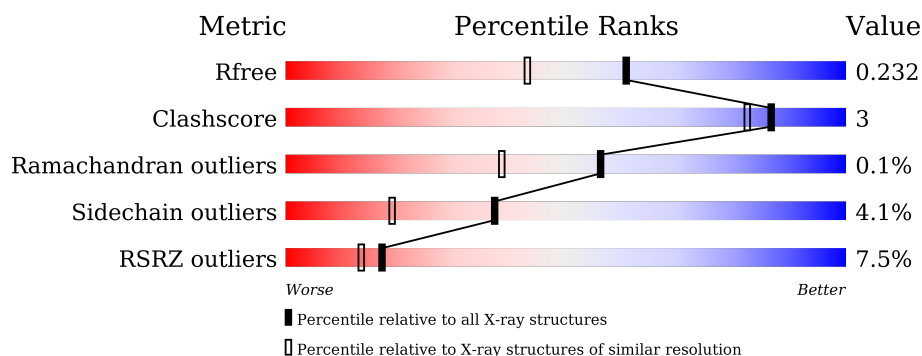
1 Overall quality at a glance

The following experimental techniques were used to determine the structure:

X-RAY DIFFRACTION

The reported resolution of this entry is 1.80 Å.

Percentile scores (ranging between 0-100) for global validation metrics of the entry are shown in the following graphic. The table shows the number of entries on which the scores are based.



Metric	Whole archive (#Entries)	Similar resolution (#Entries, resolution range(Å))
R_{free}	91344	4533 (1.80-1.80)
Clashscore	102246	5383 (1.80-1.80)
Ramachandran outliers	100387	5320 (1.80-1.80)
Sidechain outliers	100360	5319 (1.80-1.80)
RSRZ outliers	91569	4547 (1.80-1.80)

The table below summarises the geometric issues observed across the polymeric chains and their fit to the electron density. The red, orange, yellow and green segments on the lower bar indicate the fraction of residues that contain outliers for ≥ 3 , 2, 1 and 0 types of geometric quality criteria. A grey segment represents the fraction of residues that are not modelled. The numeric value for each fraction is indicated below the corresponding segment, with a dot representing fractions $\leq 5\%$. The upper red bar (where present) indicates the fraction of residues that have poor fit to the electron density. The numeric value is given above the bar.

Mol	Chain	Length	Quality of chain
1	A	132	<div> <div>20%</div> <div>58%</div> <div>8%</div> <div>33%</div> </div>
1	B	132	<div> <div>20%</div> <div>59%</div> <div>10%</div> <div>31%</div> </div>
2	C	237	<div> <div>2%</div> <div>86%</div> <div>6%</div> <div>7%</div> </div>
2	H	237	<div> <div>2%</div> <div>86%</div> <div>7%</div> <div>7%</div> </div>
3	D	214	<div> <div>%</div> <div>89%</div> <div>9%</div> <div>.</div> </div>
3	L	214	<div> <div>90%</div> <div>9%</div> </div>

Continued on next page...

Continued from previous page...

Mol	Chain	Length	Quality of chain
4	I	16	<div> <div>81%</div> <div>81%6%13%</div> </div>

2 Entry composition

There are 6 unique types of molecules in this entry. The entry contains 8461 atoms, of which 39 are hydrogens and 0 are deuteriums.

In the tables below, the ZeroOcc column contains the number of atoms modelled with zero occupancy, the AltConf column contains the number of residues with at least one atom in alternate conformation and the Trace column contains the number of residues modelled with at most 2 atoms.

- Molecule 1 is a protein called Interleukin-17A.

Mol	Chain	Residues	Atoms					ZeroOcc	AltConf	Trace
1	A	89	Total	C	N	O	S	0	0	0
			718	449	131	133	5			
1	B	91	Total	C	N	O	S	0	0	0
			731	457	135	134	5			

- Molecule 2 is a protein called CAT-2000 FAB heavy chain.

Mol	Chain	Residues	Atoms					ZeroOcc	AltConf	Trace
2	C	220	Total	C	N	O	S	0	0	0
			1622	1017	278	321	6			
2	H	220	Total	C	N	O	S	0	0	0
			1622	1017	278	321	6			

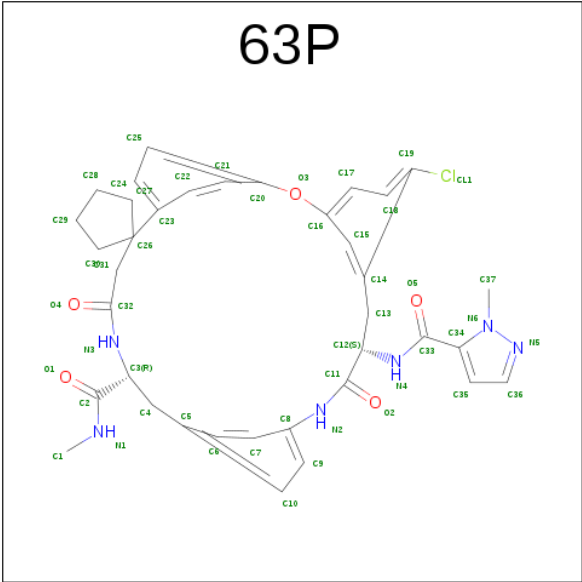
- Molecule 3 is a protein called CAT-2000 FAB light chain.

Mol	Chain	Residues	Atoms					ZeroOcc	AltConf	Trace
3	D	213	Total	C	N	O	S	0	1	0
			1618	1015	267	331	5			
3	L	213	Total	C	N	O	S	0	1	0
			1618	1015	267	331	5			

- Molecule 4 is a protein called synthetic IL-17A peptide inhibitor.

Mol	Chain	Residues	Atoms				ZeroOcc	AltConf	Trace
4	I	14	Total	C	N	O	0	0	0
			120	81	19	20			

- Molecule 5 is (9'S,17'R)-6'-chloro-N-methyl-9'-{[(1-methyl-1H-pyrazol-5-yl)carbonyl]amino}-10',19'-dioxo-2'-oxa-11',18'-diazaspiro[cyclopentane-1,21'-tetracyclo[20.2.2.2 12,15 .1 3,7 |nonacosane]-1'(24'),3'(29'),4',6',12',14',22',25',27'-nonaene-17'-carboxamide (three-letter code: 63P) (formula: C₃₇H₃₉ClN₆O₅).



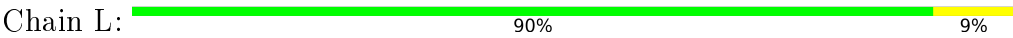
Mol	Chain	Residues	Atoms						ZeroOcc	AltConf
5	A	1	Total	C	Cl	H	N	O	39	0
			88	37	1	39	6	5		

- Molecule 6 is water.

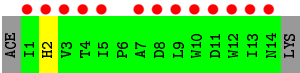
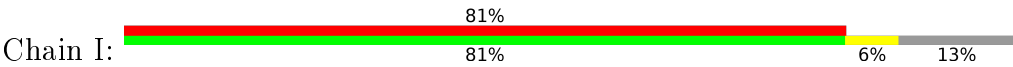
Mol	Chain	Residues	Atoms		ZeroOcc	AltConf
6	A	16	Total	O	0	0
			16	16		
6	B	17	Total	O	0	0
			17	17		
6	C	72	Total	O	0	0
			72	72		
6	D	45	Total	O	0	0
			45	45		
6	H	95	Total	O	0	0
			95	95		
6	L	79	Total	O	0	0
			79	79		



● Molecule 3: CAT-2000 FAB light chain



● Molecule 4: synthetic IL-17A peptide inhibitor



4 Data and refinement statistics

Property	Value	Source
Space group	P 1 21 1	Depositor
Cell constants a, b, c, α , β , γ	91.24Å 68.19Å 100.12Å 90.00° 91.33° 90.00°	Depositor
Resolution (Å)	50.05 – 1.80 50.05 – 1.80	Depositor EDS
% Data completeness (in resolution range)	85.6 (50.05-1.80) 85.6 (50.05-1.80)	Depositor EDS
R_{merge}	0.06	Depositor
R_{sym}	(Not available)	Depositor
$\langle I/\sigma(I) \rangle$ ¹	17.80 (at 1.79Å)	Xtriage
Refinement program	BUSTER 2.11.6	Depositor
R, R_{free}	0.200 , 0.224 0.203 , 0.232	Depositor DCC
R_{free} test set	4869 reflections (5.25%)	DCC
Wilson B-factor (Å ²)	23.3	Xtriage
Anisotropy	0.056	Xtriage
Bulk solvent k_{sol} (e/Å ³), B_{sol} (Å ²)	0.35 , 46.3	EDS
L-test for twinning ²	$\langle L \rangle = 0.47$, $\langle L^2 \rangle = 0.30$	Xtriage
Estimated twinning fraction	0.027 for h,-k,-l	Xtriage
F_o, F_c correlation	0.95	EDS
Total number of atoms	8461	wwPDB-VP
Average B, all atoms (Å ²)	37.0	wwPDB-VP

Xtriage's analysis on translational NCS is as follows: *The largest off-origin peak in the Patterson function is 4.36% of the height of the origin peak. No significant pseudotranslation is detected.*

¹Intensities estimated from amplitudes.

²Theoretical values of $\langle |L| \rangle$, $\langle L^2 \rangle$ for acentric reflections are 0.5, 0.333 respectively for untwinned datasets, and 0.375, 0.2 for perfectly twinned datasets.

5 Model quality [i](#)

5.1 Standard geometry [i](#)

Bond lengths and bond angles in the following residue types are not validated in this section: 63P

The Z score for a bond length (or angle) is the number of standard deviations the observed value is removed from the expected value. A bond length (or angle) with $|Z| > 5$ is considered an outlier worth inspection. RMSZ is the root-mean-square of all Z scores of the bond lengths (or angles).

Mol	Chain	Bond lengths		Bond angles	
		RMSZ	# Z >5	RMSZ	# Z >5
1	A	0.42	0/737	0.60	0/1004
1	B	0.42	0/750	0.61	0/1022
2	C	0.55	0/1658	0.68	0/2256
2	H	0.54	0/1658	0.69	0/2256
3	D	0.48	0/1660	0.69	0/2269
3	L	0.51	0/1660	0.69	0/2269
4	I	0.45	0/125	0.56	0/174
All	All	0.50	0/8248	0.67	0/11250

There are no bond length outliers.

There are no bond angle outliers.

There are no chirality outliers.

There are no planarity outliers.

5.2 Too-close contacts [i](#)

In the following table, the Non-H and H(model) columns list the number of non-hydrogen atoms and hydrogen atoms in the chain respectively. The H(added) column lists the number of hydrogen atoms added and optimized by MolProbity. The Clashes column lists the number of clashes within the asymmetric unit, whereas Symm-Clashes lists symmetry related clashes.

Mol	Chain	Non-H	H(model)	H(added)	Clashes	Symm-Clashes
1	A	718	0	686	7	0
1	B	731	0	700	8	0
2	C	1622	0	1601	5	0
2	H	1622	0	1601	9	0
3	D	1618	0	1555	9	0
3	L	1618	0	1555	12	0

Continued on next page...

Continued from previous page...

Mol	Chain	Non-H	H(model)	H(added)	Clashes	Symm-Clashes
4	I	120	0	115	1	0
5	A	49	39	0	0	0
6	A	16	0	0	1	0
6	B	17	0	0	0	0
6	C	72	0	0	0	0
6	D	45	0	0	1	0
6	H	95	0	0	0	0
6	L	79	0	0	1	0
All	All	8422	39	7813	43	0

The all-atom clashscore is defined as the number of clashes found per 1000 atoms (including hydrogen atoms). The all-atom clashscore for this structure is 3.

All (43) close contacts within the same asymmetric unit are listed below, sorted by their clash magnitude.

Atom-1	Atom-2	Interatomic distance (Å)	Clash overlap (Å)
3:L:28:LEU:H	3:L:69:ASN:HD21	1.29	0.80
2:C:82:MET:HE2	2:C:82(C):LEU:HD21	1.66	0.78
1:B:125:THR:HG22	1:B:127:ILE:H	1.51	0.76
6:A:4103:HOH:O	1:B:125:THR:HB	1.87	0.74
1:A:125:THR:HG22	1:A:127:ILE:H	1.52	0.74
3:D:28:LEU:H	3:D:69:ASN:HD21	1.43	0.66
3:L:28:LEU:H	3:L:69:ASN:ND2	1.93	0.66
3:D:28:LEU:H	3:D:69:ASN:ND2	1.98	0.62
2:H:13:GLN:HG3	2:H:14:PRO:HD2	1.82	0.61
2:H:181:VAL:HG11	3:L:136:LEU:CD1	2.34	0.58
1:A:92:ILE:HD11	1:A:122:THR:HB	1.87	0.57
1:B:92:ILE:HD11	1:B:122:THR:HB	1.86	0.56
2:H:82:MET:HE2	2:H:82(C):LEU:HD21	1.90	0.54
1:B:76:CYS:HB2	1:B:87:MET:HG3	1.90	0.53
3:L:78:LEU:HD21	3:L:106:VAL:HG22	1.91	0.51
2:H:181:VAL:CG1	3:L:136:LEU:CD1	2.89	0.49
3:L:47:VAL:HG12	3:L:48:ILE:HG12	1.95	0.49
2:C:151:THR:HG22	2:C:199:ASN:HB3	1.95	0.49
1:A:86:HIS:HE1	6:L:337:HOH:O	1.95	0.48
1:A:76:CYS:HB2	1:A:87:MET:HG3	1.94	0.48
2:H:181:VAL:HG11	3:L:136:LEU:HD12	1.95	0.48
1:B:84:ASP:OD1	1:B:86:HIS:HD2	1.96	0.47
3:L:185:GLN:O	3:L:189:HIS:HD2	1.97	0.47
3:D:20:THR:HB	3:D:74:THR:HG22	1.97	0.47
1:B:86:HIS:HE1	6:D:324:HOH:O	1.97	0.47

Continued on next page...

Continued from previous page...

Atom-1	Atom-2	Interatomic distance (Å)	Clash overlap (Å)
1:A:84:ASP:OD1	1:A:86:HIS:HD2	1.97	0.46
3:D:47:VAL:HG12	3:D:48:ILE:HG12	1.97	0.46
3:D:185:GLN:O	3:D:189:HIS:HD2	1.99	0.46
2:H:150:VAL:HG23	2:H:178:LEU:HD21	1.97	0.46
3:D:36:TYR:CE1	3:D:46:ILE:HG22	2.53	0.43
3:D:195:GLN:HG2	3:D:204:GLU:HG3	2.01	0.43
2:H:119:PRO:HB3	2:H:145:TYR:HB3	2.01	0.43
1:A:109:SER:HA	4:I:2:HIS:O	2.20	0.42
1:A:92:ILE:HD12	1:B:92:ILE:HD12	2.01	0.42
1:B:36:ASN:HA	1:B:37:PRO:HD3	1.95	0.42
2:H:181:VAL:CG1	3:L:136:LEU:HD13	2.50	0.42
3:L:4:LEU:HD11	3:L:90:THR:HG22	2.02	0.41
2:C:214:LYS:NZ	3:D:123:SER:H	2.18	0.41
3:D:4:LEU:HD11	3:D:90:THR:HG22	2.02	0.41
3:L:195:GLN:HG2	3:L:204:GLU:HG3	2.02	0.41
2:C:127:SER:O	2:C:131:THR:HG23	2.20	0.41
2:C:145:TYR:CE2	2:C:150:VAL:HG13	2.55	0.40
2:H:167:PRO:HG2	3:L:166:SER:OG	2.22	0.40

There are no symmetry-related clashes.

5.3 Torsion angles [i](#)

5.3.1 Protein backbone [i](#)

In the following table, the Percentiles column shows the percent Ramachandran outliers of the chain as a percentile score with respect to all X-ray entries followed by that with respect to entries of similar resolution.

The Analysed column shows the number of residues for which the backbone conformation was analysed, and the total number of residues.

Mol	Chain	Analysed	Favoured	Allowed	Outliers	Percentiles	
1	A	85/132 (64%)	85 (100%)	0	0	100	100
1	B	87/132 (66%)	87 (100%)	0	0	100	100
2	C	218/237 (92%)	212 (97%)	6 (3%)	0	100	100
2	H	218/237 (92%)	212 (97%)	5 (2%)	1 (0%)	34	17
3	D	212/214 (99%)	206 (97%)	6 (3%)	0	100	100
3	L	212/214 (99%)	207 (98%)	5 (2%)	0	100	100

Continued on next page...

Continued from previous page...

Mol	Chain	Analysed	Favoured	Allowed	Outliers	Percentiles	
4	I	12/16 (75%)	12 (100%)	0	0	100	100
All	All	1044/1182 (88%)	1021 (98%)	22 (2%)	1 (0%)	56	38

All (1) Ramachandran outliers are listed below:

Mol	Chain	Res	Type
2	H	132	SER

5.3.2 Protein sidechains ⓘ

In the following table, the Percentiles column shows the percent sidechain outliers of the chain as a percentile score with respect to all X-ray entries followed by that with respect to entries of similar resolution.

The Analysed column shows the number of residues for which the sidechain conformation was analysed, and the total number of residues.

Mol	Chain	Analysed	Rotameric	Outliers	Percentiles	
1	A	83/124 (67%)	79 (95%)	4 (5%)	31	14
1	B	84/124 (68%)	81 (96%)	3 (4%)	42	24
2	C	182/196 (93%)	176 (97%)	6 (3%)	45	27
2	H	182/196 (93%)	175 (96%)	7 (4%)	40	22
3	D	185/186 (100%)	175 (95%)	10 (5%)	27	11
3	L	185/186 (100%)	178 (96%)	7 (4%)	40	22
4	I	13/14 (93%)	13 (100%)	0	100	100
All	All	914/1026 (89%)	877 (96%)	37 (4%)	37	20

All (37) residues with a non-rotameric sidechain are listed below:

Mol	Chain	Res	Type
1	A	80	ASP
1	A	87	MET
1	A	112	LEU
1	A	115	ILE
1	B	80	ASP
1	B	98	VAL
1	B	112	LEU
2	C	35	SER
2	C	100(A)	THR

Continued on next page...

Continued from previous page...

Mol	Chain	Res	Type
2	C	148	GLN
2	C	164	HIS
2	C	191	THR
2	C	206	LYS
3	D	13	GLU
3	D	20	THR
3	D	28	LEU
3	D	46	ILE
3	D	56	SER
3	D	80	THR
3	D	103	LYS
3	D	111	LYS
3	D	127	GLN
3	D	157	LYS
2	H	13	GLN
2	H	35	SER
2	H	100(A)	THR
2	H	105	GLN
2	H	148	GLN
2	H	191	THR
2	H	206	LYS
3	L	28	LEU
3	L	46	ILE
3	L	56	SER
3	L	103	LYS
3	L	111	LYS
3	L	156	VAL
3	L	157	LYS

Some sidechains can be flipped to improve hydrogen bonding and reduce clashes. All (23) such sidechains are listed below:

Mol	Chain	Res	Type
1	A	86	HIS
1	B	36	ASN
1	B	86	HIS
2	C	76	ASN
2	C	82(A)	ASN
2	C	98	HIS
2	C	105	GLN
2	C	148	GLN
3	D	69	ASN
3	D	89	GLN

Continued on next page...

Continued from previous page...

Mol	Chain	Res	Type
3	D	127	GLN
3	D	189	HIS
3	D	195	GLN
2	H	76	ASN
2	H	82(A)	ASN
2	H	98	HIS
2	H	105	GLN
2	H	148	GLN
3	L	69	ASN
3	L	89	GLN
3	L	127	GLN
3	L	189	HIS
3	L	195	GLN

5.3.3 RNA [i](#)

There are no RNA molecules in this entry.

5.4 Non-standard residues in protein, DNA, RNA chains [i](#)

There are no non-standard protein/DNA/RNA residues in this entry.

5.5 Carbohydrates [i](#)

There are no carbohydrates in this entry.

5.6 Ligand geometry [i](#)

1 ligand is modelled in this entry.

In the following table, the Counts columns list the number of bonds (or angles) for which Mogul statistics could be retrieved, the number of bonds (or angles) that are observed in the model and the number of bonds (or angles) that are defined in the chemical component dictionary. The Link column lists molecule types, if any, to which the group is linked. The Z score for a bond length (or angle) is the number of standard deviations the observed value is removed from the expected value. A bond length (or angle) with $|Z| > 2$ is considered an outlier worth inspection. RMSZ is the root-mean-square of all Z scores of the bond lengths (or angles).

Mol	Type	Chain	Res	Link	Bond lengths			Bond angles		
					Counts	RMSZ	$\# Z > 2$	Counts	RMSZ	$\# Z > 2$
5	63P	A	4000	-	53,54,54	1.07	5 (9%)	69,77,77	1.05	4 (5%)

In the following table, the Chirals column lists the number of chiral outliers, the number of chiral centers analysed, the number of these observed in the model and the number defined in the chemical component dictionary. Similar counts are reported in the Torsion and Rings columns. '-' means no outliers of that kind were identified.

Mol	Type	Chain	Res	Link	Chirals	Torsions	Rings
5	63P	A	4000	-	-	0/46/58/58	0/2/6/6

All (5) bond length outliers are listed below:

Mol	Chain	Res	Type	Atoms	Z	Observed(Å)	Ideal(Å)
5	A	4000	63P	C35-C36	2.09	1.40	1.38
5	A	4000	63P	C11-N2	2.20	1.39	1.35
5	A	4000	63P	C33-N4	2.51	1.39	1.34
5	A	4000	63P	C32-N3	2.57	1.39	1.34
5	A	4000	63P	C2-N1	4.13	1.39	1.32

All (4) bond angle outliers are listed below:

Mol	Chain	Res	Type	Atoms	Z	Observed(°)	Ideal(°)
5	A	4000	63P	C27-C26-C30	-3.83	97.77	102.27
5	A	4000	63P	C35-C34-N6	-3.39	103.98	108.59
5	A	4000	63P	C11-C12-N4	-2.46	104.31	111.28
5	A	4000	63P	C34-N6-N5	3.34	114.34	111.93

There are no chirality outliers.

There are no torsion outliers.

There are no ring outliers.

No monomer is involved in short contacts.

5.7 Other polymers

There are no such residues in this entry.

5.8 Polymer linkage issues

There are no chain breaks in this entry.

6 Fit of model and data

6.1 Protein, DNA and RNA chains

In the following table, the column labelled ‘#RSRZ> 2’ contains the number (and percentage) of RSRZ outliers, followed by percent RSRZ outliers for the chain as percentile scores relative to all X-ray entries and entries of similar resolution. The OWAB column contains the minimum, median, 95th percentile and maximum values of the occupancy-weighted average B-factor per residue. The column labelled ‘Q< 0.9’ lists the number of (and percentage) of residues with an average occupancy less than 0.9.

Mol	Chain	Analysed	<RSRZ>	#RSRZ>2	OWAB(Å ²)	Q<0.9
1	A	89/132 (67%)	1.28	26 (29%) 1 0	23, 45, 118, 135	0
1	B	91/132 (68%)	1.23	27 (29%) 1 0	25, 50, 106, 129	0
2	C	220/237 (92%)	0.03	4 (1%) 71 67	17, 26, 46, 104	0
2	H	220/237 (92%)	-0.03	5 (2%) 64 59	18, 27, 48, 74	0
3	D	213/214 (99%)	0.05	3 (1%) 78 74	17, 36, 64, 90	0
3	L	213/214 (99%)	-0.26	1 (0%) 91 90	19, 28, 44, 90	0
4	I	14/16 (87%)	6.06	13 (92%) 0 0	85, 92, 119, 122	0
All	All	1060/1182 (89%)	0.25	79 (7%) 17 13	17, 30, 81, 135	0

All (79) RSRZ outliers are listed below:

Mol	Chain	Res	Type	RSRZ
4	I	10	TRP	12.9
1	B	104	PRO	12.1
4	I	1	ILE	10.5
4	I	2	HIS	10.0
2	C	215	SER	9.4
4	I	13	ILE	9.0
1	A	59	PRO	8.8
1	A	39	ARG	8.0
3	L	210	THR	6.7
1	B	110	PHE	6.6
1	A	67	TRP	6.5
1	A	62	TYR	6.4
1	B	103	PRO	6.0
4	I	3	VAL	5.8
1	A	110	PHE	5.7
1	A	60	GLU	5.7
1	B	112	LEU	5.7

Continued on next page...

Continued from previous page...

Mol	Chain	Res	Type	RSRZ
4	I	5	ILE	5.7
1	A	108	ASN	5.4
4	I	12	TRP	5.4
4	I	9	LEU	5.2
1	B	109	SER	5.2
1	A	55	ARG	5.1
1	B	102	GLU	5.1
1	A	97	LEU	5.0
1	A	101	ARG	4.8
1	B	62	TYR	4.8
3	D	210	THR	4.7
1	A	104	PRO	4.6
4	I	7	ALA	4.6
4	I	14	ASN	4.4
1	B	108	ASN	4.4
2	C	214	LYS	4.3
1	B	97	LEU	4.3
1	A	57	GLU	4.2
1	A	64	SER	4.1
1	A	100	ARG	4.1
2	H	131	THR	4.0
1	A	103	PRO	3.9
1	A	102	GLU	3.8
1	A	112	LEU	3.7
4	I	11	ASP	3.5
4	I	4	THR	3.5
2	C	190	GLY	3.4
1	B	114	LYS	3.4
1	B	101	ARG	3.3
3	D	60	ASP	3.2
1	B	98	VAL	3.2
1	B	99	LEU	3.1
1	A	58	ASP	3.1
1	B	65	VAL	3.1
1	A	99	LEU	3.0
2	H	215	SER	3.0
1	A	54	HIS	3.0
1	A	65	VAL	2.9
1	B	39	ARG	2.9
1	B	57	GLU	2.9
1	B	37	PRO	2.8
4	I	8	ASP	2.8

Continued on next page...

Continued from previous page...

Mol	Chain	Res	Type	RSRZ
1	B	36	ASN	2.8
1	B	63	PRO	2.7
1	B	59	PRO	2.7
1	B	66	ILE	2.7
1	A	113	GLU	2.7
2	C	1	GLU	2.5
1	B	96	ILE	2.5
1	A	109	SER	2.3
1	A	98	VAL	2.3
1	B	55	ARG	2.3
1	B	64	SER	2.3
2	H	190	GLY	2.2
3	D	13	GLU	2.2
1	A	53	LEU	2.2
2	H	129	LYS	2.2
1	A	79	ALA	2.1
1	B	100	ARG	2.1
1	B	129	HIS	2.1
1	B	67	TRP	2.0
2	H	130	SER	2.0

6.2 Non-standard residues in protein, DNA, RNA chains [i](#)

There are no non-standard protein/DNA/RNA residues in this entry.

6.3 Carbohydrates [i](#)

There are no carbohydrates in this entry.

6.4 Ligands [i](#)

In the following table, the Atoms column lists the number of modelled atoms in the group and the number defined in the chemical component dictionary. LLDF column lists the quality of electron density of the group with respect to its neighbouring residues in protein, DNA or RNA chains. The B-factors column lists the minimum, median, 95th percentile and maximum values of B factors of atoms in the group. The column labelled 'Q< 0.9' lists the number of atoms with occupancy less than 0.9.

Mol	Type	Chain	Res	Atoms	RSCC	RSR	LLDF	B-factors(Å ²)	Q<0.9
5	63P	A	4000	49/49	0.72	0.36	1.37	62,73,77,77	39

6.5 Other polymers

There are no such residues in this entry.